



The Ultimate
Driving Machine



THE X3 M THE X4 M




COMPETITION

Best viewed in
landscape mode



THE BMW X3 M AND X4 M COMPETITION.

RETURN BY CLICKING 
SELECT A TOPIC BELOW TO EXPLORE:



FEATURED MODELS.

BMW X3 M COMPETITION:

M TwinPower Turbo six-cylinder petrol engine, 510hp (375kW), 21" M light alloy V-spoke style 765 M Bicolour Black wheels with mixed tyres, Donington Grey metallic paint, M seats upholstered in Black with Midrand Beige Bicolour Merino leather/Alcantara combination, Carbon Fibre interior trim.

BMW X4 M COMPETITION:

M TwinPower Turbo six-cylinder petrol engine, 510hp (375kW), 21" M light alloy V-spoke style 765 M Bicolour Black wheels with mixed tyres, Toronto Red metallic paint, M seats upholstered in Adelaide Grey Full Merino leather, M Carbon package including Carbon Fibre interior trim, M Carbon exterior package and M Carbon precision strut.



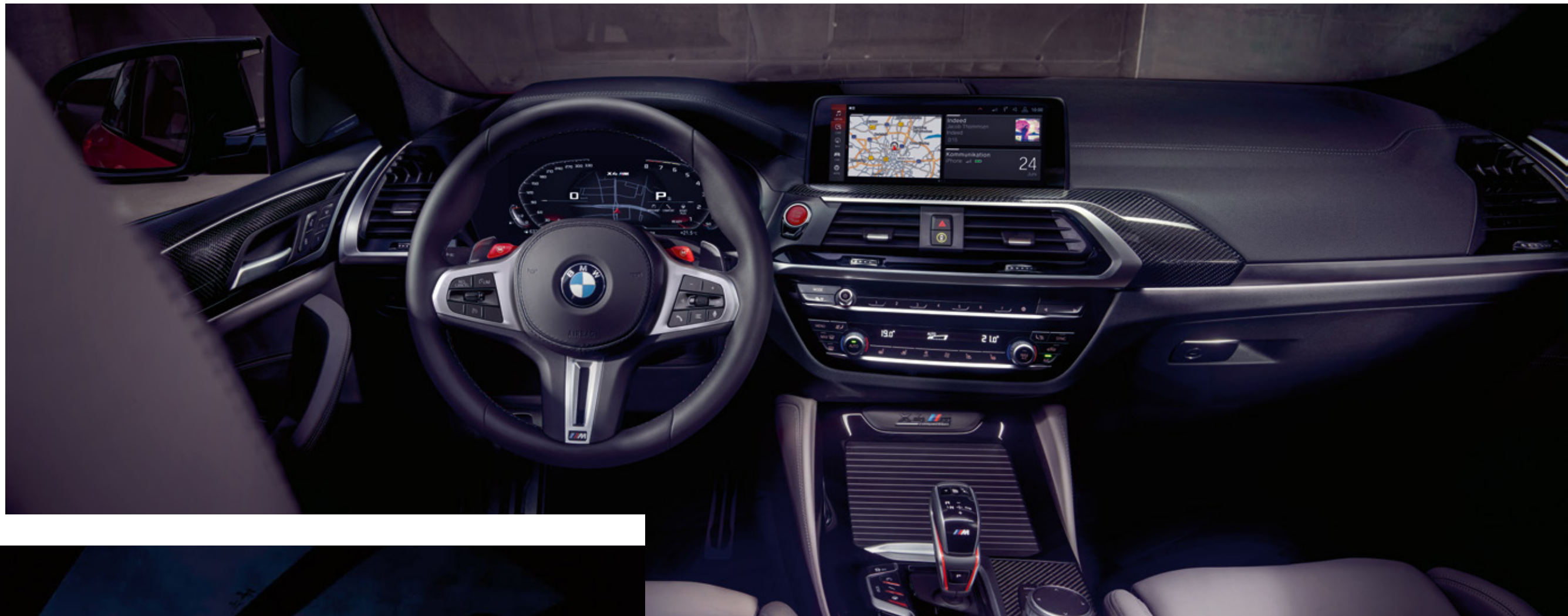
A NEW
DRIVING FORCE.



“THE COMPETITION-STANDARD M SPORT EXHAUST SYSTEM DELIVERS A PLEASING SOUNDTRACK THROUGH ITS PAIR OF DOUBLE TAILPIPES, FULL OF BURBLE AND BASS AT TICKOVER AND SOARING SOPRANO IN ITS UPPER REACHES.”

CAR magazine, December 2019

[Read the full review](#)



GOOSEBUMPS DON'T LIE.



STANDARD EQUIPMENT, INCLUDES:

- 21" M light alloy V-spoke style 765 M wheels, Bicolour Black with mixed tyres
- Acoustic glazing
- Active Guard
- Adaptive M suspension
- Air conditioning, automatic with three-zone control
- Ambient lighting
- BMW Icon Adaptive LED Headlights
- BMW Live Cockpit Professional, comprising:
 - 10.25" Control Display with Touch Function
 - BMW Operating System 7.0
 - iDrive Controller with Touch Function
- Connected Package Professional
- Cruise control with braking function
- DAB tuner
- Door sill finishers front – High-gloss Black, with X3 M Competition designation
- Driving Assistant
- Dynamic brake lights with LED technology
- Eight-speed M Steptronic transmission with DRIVELOGIC
- Exhaust tailpipes – quad, round, split left and right, High-gloss Black
- Exterior trim, High-gloss Shadowline
- Full Merino leather upholstery
- High-beam Assistant
- Instrument panel in Sensatec
- Interior trim, Aluminium Carbon with Pearl Chrome finisher
- Kidney grille in High-gloss Black with Black vertical slats
- Loudspeaker system – harman/kardon
- M Competition bodystyling
- M Compound brakes, perforated
- M Head-up Display
- M exterior mirrors in High-gloss Black
- M leather multi-functional steering wheel
- M seats, front
- M Sport exhaust system
- Metallic paintwork
- Park Distance Control (PDC), front and rear
- Parking Assistant with Reversing Assist camera
- Roof rails, High-gloss Shadowline
- Seat adjustment – front, electric with driver memory
- Seat heating, front
- Split-folding seats, rear



X4 M COMPETITION.



STANDARD EQUIPMENT, INCLUDES:

- 21" M light alloy V-spoke style 765 M wheels, Bicolour Black with mixed tyres
- Acoustic glazing
- Active Guard
- Adaptive M suspension
- Air conditioning, automatic with three-zone control
- Ambient lighting
- BMW Icon Adaptive LED Headlights
- BMW Live Cockpit Professional, comprising:
 - 10.25" Control Display with Touch Function
 - BMW Operating System 7.0
 - iDrive Controller with Touch Function
- Connected Package Professional
- Cruise control with braking function
- DAB tuner
- Door sill finishers front – High-gloss Black, with X4 M Competition designation
- Driving Assistant
- Dynamic brake lights with LED technology
- Eight-speed M Steptronic transmission with DRIVELOGIC
- Exhaust tailpipes – quad, round, split left and right, High-gloss Black
- Exterior trim, High-gloss Shadowline
- Full Merino leather upholstery
- High-beam Assistant
- Instrument panel in Sensatec
- Interior trim, Aluminium Carbon with Pearl Chrome finisher
- Kidney grille in High-gloss Black with Black vertical slats
- Loudspeaker system – harman/kardon
- M Competition bodystyling
- M Compound brakes, perforated
- M Head-up Display
- M exterior mirrors in High-gloss Black
- M leather multi-functional steering wheel
- M seats, front
- M Sport exhaust system
- Metallic paintwork
- Park Distance Control (PDC), front and rear
- Parking Assistant with Reversing Assist camera
- Seat adjustment – front, electric with driver memory
- Seat heating, front
- Split-folding seats, rear



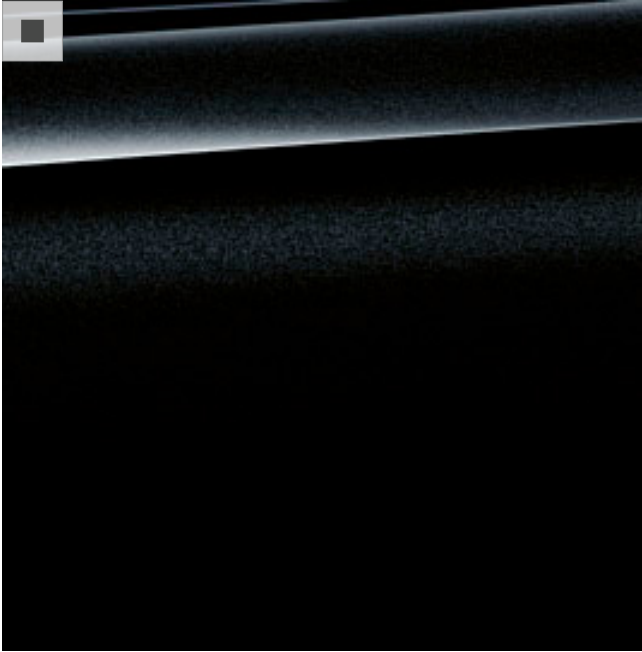
The BMW X4 M Competition is shown above in Toronto Red metallic paint.

■ Standard equipment □ Optional equipment

EXTERIOR COLOURS.



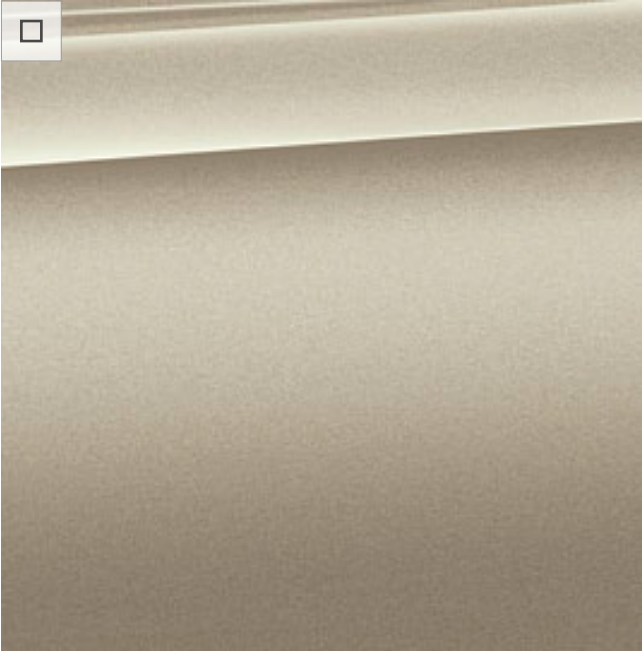
Non-metallic Alpine White



Metallic Black Sapphire



Metallic Sophisto Grey



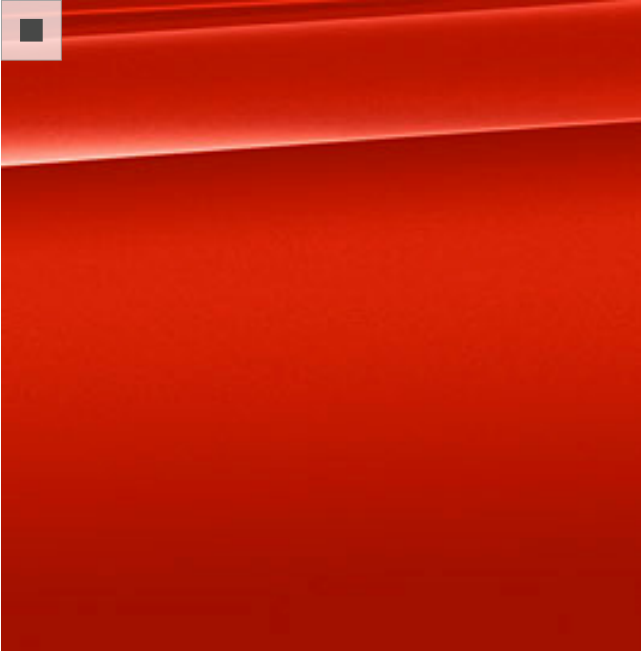
BMW Individual Sunstone metallic



Metallic Phytonic Blue



Metallic Donington Grey



Metallic Toronto Red


Colour samples

These colour samples are intended as an initial guide to the colours and materials available for your BMW. Please discuss your preferred colour choices with your BMW Retailer. There you can also see original samples and be assisted with any requests.

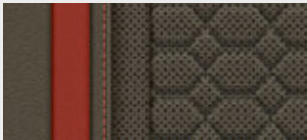
UPHOLSTERIES & INTERIOR TRIMS.




LEATHER.



☒ Merino leather
Sakhir Orange



☒ Merino leather
Adelaide Grey




☒ Merino leather
Black

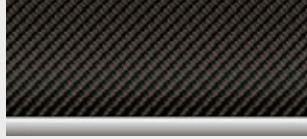


☐ Merino leather / Alcantara combination
Black with Midrand Beige Bicolour

INTERIOR TRIMS.




☒ Aluminium Carbon Structure
with Pearl Chrome highlight




☐ Carbon Fibre

BMW INDIVIDUAL INTERIOR TRIM.




☒ Piano Black

BMW INDIVIDUAL LEATHER.



☒ BMW Individual Merino leather
Ivory White / Black



☒ BMW Individual Merino leather
Tartufo / Black

Please note that even normal long- or short-term use can lead to unrecoverable upholstery damage. This can be caused in particular by non-colourfast clothing.

■ Standard equipment □ Optional equipment

PACKAGES.

BMW packages, in the BMW X3 M Competition and BMW X4 M Competition, are designed to create greater convenience, functionality, desire and comfort on any drive. With options ranging from the utmost in advanced headlight technologies to the comfort of keyless access, this generous selection of combinations will enhance any journey in your BMW X3 M Competition and BMW X4 M Competition.



- COMFORT PACKAGE.
- ☐ Steering wheel heating
 - ☐ Comfort Access with smart opener
 - ☐ Seat backrest adjustment for rear seats (X3 M Competition only)
 - ☐ Extended storage



- M CARBON PACKAGE.
- ☐ Interior trim, Carbon Fibre
 - ☐ M Carbon Exterior Package
 - ☐ M Carbon engine strut

- ULTIMATE PACKAGE.
- ☐ Comfort Package
 - ☐ M Carbon Package
 - ☐ Panoramic Glass Sunroof
 - ☐ Sun Protection Glass
 - ☐ Heated seats, front and rear
 - ☐ Interior trim, Carbon Fibre
 - ☐ Driving Assistant Plus
 - ☐ Parking Assistant Plus
 - ☐ Apple CarPlay preparation
 - ☐ Enhanced Bluetooth with wireless charging
 - ☐ WiFi hotspot preparation
 - ☐ BMW Gesture Control



- M DRIVER'S PACKAGE.
- ☐ Increase of top speed to approximately 177mph
 - ☐ Voucher for BMW M Intensive Training from the BMW Driving Experience

Increase of top speed not available until the running in inspection has been completed. For course-specific information, please visit www.bmw-drivingexperience.com



STANDARD & OPTIONAL EQUIPMENT HIGHLIGHTS.



The X3 M Competition offers an increase in driving dynamics and a powerful, particularly emotional engine sound thanks to increased engine performance and M Sport exhaust system with Black twin tailpipes. Distinctive exterior details in Black, the exclusive 21" M light alloy wheels and M seats in Merino leather underline the sporty character.



Driving Assistant Plus offers greater comfort and security during monotonous or complex driving situations. These can include traffic jams, stop-and-go traffic or long journeys through the city, on country roads or motorways, along with navigating junctions and lane changes.¹



The M gear selector switch features an M-specific switch pattern. In manual "S" mode, the driver can shift gears manually using the selector lever or the rocker switch on the steering wheel. In "D" mode, shifting occurs automatically. Whereas the Drivelogic switch for the three shifting programs is on the upper side, the P button for the parking lock is placed under the M logo.



Thanks to the use of various materials, M Compound brakes achieve outstanding deceleration values and are extremely stable and highly durable. They also weigh less, which has a positive impact on agility, dynamics and acceleration. The Blue metallic brake callipers with the M designation are the hallmark of these high-performance M-specific brakes.



Enhanced Bluetooth with wireless charging enables a Bluetooth connectivity and the technical capacity for a WiFi hotspot. The universal, wireless smartphone charging dock only functions with compatible smartphones. For smartphones without an inductive charging function, special charging cases are available to purchase via BMW Parts and Accessories for selected devices.^{2,3}



Adaptive M suspension is a variable, electronically-controlled shock absorber adjustment system that improves driving dynamics, agility and comfort. Sensors in the vehicle permanently measure body and wheel acceleration, lateral/longitudinal acceleration, driving speed and the position of the steering wheel to calculate the control commands for the electromagnetic valves in the shock absorbers for each individual wheel.



The high-performance M TwinPower Turbo six-cylinder in-line petrol engine features superior power delivery and silky-smooth running coupled with a sporty engine sound. With Double-VANOS, Valvetronic, High-precision injection and two turbochargers, it generates 510hp (375kW).



The M Sport exhaust system delivers a particularly sporty sound and features tailpipe finishes in High-gloss Black.



The High-gloss Black Shadowline roof rails add a premium-quality touch. Lying flat on the roof, they form the basis for a multi-functional BMW roof rack unit that carries a roof box, bicycles and surf boards easily and securely. Standard for X3 M Competition.



21" M light alloy V-spoke style 765 M wheels, Bicolour Black, front 9.5 J x 21, 255/40 R21, rear 10 J x 21, 265/40 R21 tyres.

¹ = Function may be limited in darkness, fog or bright glare.
² = The universal, wireless smartphone charging dock only functions with compatible smartphones. For smartphones without an inductive charging function, special charging cases are available to purchase via BMW Parts and Accessories for selected devices.
³ = The WiFi hotspot fulfils all in-vehicle requirements for use of the internet with the maximum LTE standard. Usage is subject to cost.

■ Standard equipment □ Optional equipment

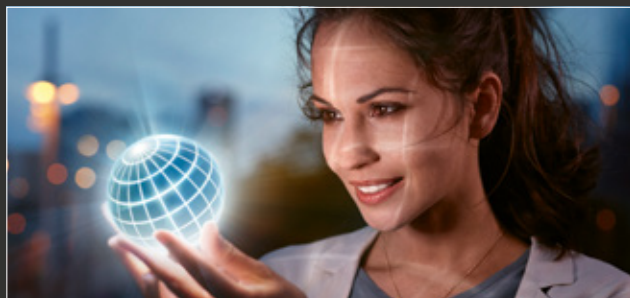
The BMW Connected App. Your personal mobility assistant.



The BMW Connected App learns your mobility routines, reads your calendar and knows when you need to leave, providing you with a personal experience that is integrated into your everyday life. The App allows you to fully unleash the capabilities of BMW's innovative technologies intuitively through your smartphone.

■ BMW LIVE COCKPIT PROFESSIONAL.

Thanks to BMW ConnectedDrive, you are now more connected than ever before. Providing cutting edge innovations as standard, the BMW X3 M and X4 M Competition come with a host of connectivity features that enhance and perfectly accompany any journey. The range of services can be seen below:



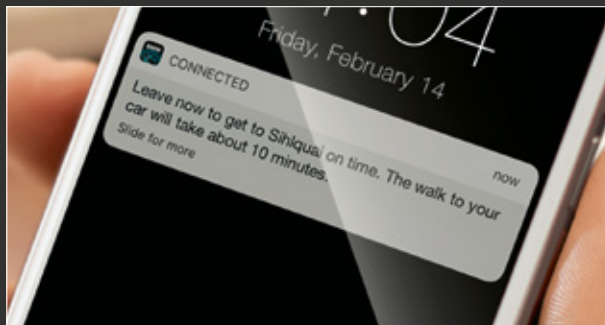
■ **Apps** makes it possible to operate smartphone apps, such as BMW Connected and web radio conveniently and securely via the iDrive Controller and Control Display.¹



■ **BMW TeleServices** transmits vehicle-specific service data and supports the processing of servicing appointments. It can also help you request help in the event of a breakdown.²



■ **BMW Emergency Call** automatically establishes a direct link to the local emergency services and sends details of your vehicle location and severity of the accident.²



■ **BMW Connected+** provides the benefit of personalised services at all times.¹

■ **BMW Online Services** provides the seamless integration of personalised BMW Connected mobility related services.

■ **Map Updates** – Automatically update maps in your BMW by downloading Over-the-Air via the on-board sim card or upload from a USB.¹

■ **Intelligent Voice Control** understands natural speech as well as linguistic varieties and dialects thanks to off-board voice processing.¹

■ CONNECTED PACKAGE PROFESSIONAL.



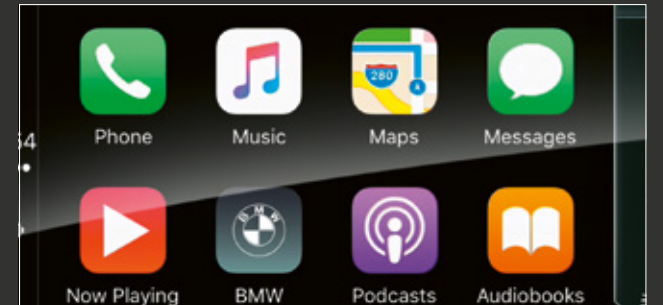
■ **Remote Services** allows you to remain connected to your vehicle wherever you are, send destinations, find your vehicle as well as locking and unlocking your doors.¹



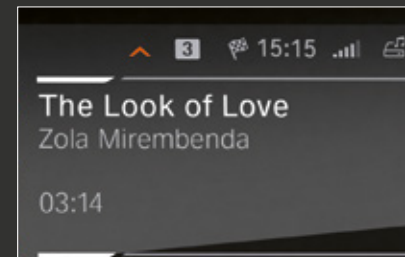
■ **Concierge Services** connects the driver to a BMW Call Centre agent who is available as their around-the-clock personal assistant.¹



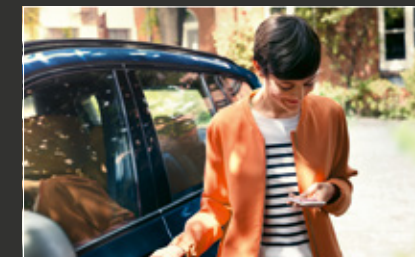
■ **Real Time Traffic Information** supplies details about the location and duration of delays, also includes Hazard Preview and On-street Parking Information.¹



■ **Apple CarPlay® preparation** enables wireless usage of your iPhone® in your vehicle via Apple CarPlay® and is operated via the vehicle's user interface.²



■ Thanks to **Connected Music**, you can experience unlimited streaming of millions of songs from BMW's music partners Spotify, Deezer or Napster via the SIM card in the vehicle.¹



■ **Connected Parking** offers multi-storey and on-street parking information in selected cities throughout the UK and selected cities in Europe.



■ **Connected Navigation** makes route planning easier, anticipates road conditions and provides estimated time of arrival, plus multiple map views with split screen options.¹

■ CONNECTED TEASER.

Available with Connected Package Professional and offers a three month trial of the following services:



BMW Music, powered by Napster, brings your favourite music to your BMW. Get access to millions of songs and thousands of audio books with a single click.³

BMW PAY MONTHLY SERVICING & TRACKSTAR.

SERVICING MADE SIMPLE.

Planning for the road ahead has never been easier. With the BMW Pay Monthly Service Plan¹ you can remove the uncertainty often associated with car servicing costs by spreading them monthly, much like you would your household bills. Our Pay Monthly service plan covers two services and any unused credit can be transferred to another BMW if you decide to switch unexpectedly. As part of the Pay Monthly plan you will also receive a number of added extras including:

- Fluid top ups
- An MOT
- A Wash & Vac each time you visit
- Seasonal health checks
- Sat Nav Map updates

Get the quality service and parts you expect from BMW with a fixed monthly payment. Give your BMW the care and attention it deserves from the experts that made it.

Price (inc. running in service): £45 per month for 36 months

Price (without running in service): £35 per month for 36 months

Please contact your preferred BMW Centre for further information.

BMW TRACKSTAR.

Locate and recover your vehicle if it is stolen with BMW Trackstar or BMW Trackstar Advance.

Benefits include:

- 24/7 Trackstar Monitoring Centre
- Thatcham accredited
- Integrated motion sensor
- Pan-European protection

BMW Trackstar S7 price from: £399²

BMW Trackstar S5 price from £549²

BMW Trackstar S5 Advance price from: £649²



PRICING INFORMATION.

Model	Basic price (excluding VAT)	VAT 20%	RRP (including VAT)	On the road price from	P11d value	BIK tax rate (2020 / 2021)	Insurance group	RDE2 Certified (Y/N)	Model
X3 M Competition	£63,291.67	£12,658.33	£75,950	£79,030	£76,800	37%	46	N	X3 M Competition
X4 M Competition	£65,725.00	£13,145.00	£78,870	£81,950	£79,720	37%	46	N	X4 M Competition

TECHNICAL INFORMATION.

Model	Power output (hp)	0-62mph (secs)	Fuel consumption – combined (mpg / l/100km)*	CO ₂ emissions – combined (g/km)*	Model
X3 M Competition	510	4.1	24.4-24.8 / 11.6-11.4	265-261	X3 M Competition
X4 M Competition	510	4.1	24.6-24.8 / 11.5-11.4	263-259	X4 M Competition

PRICES AND SPECIFICATIONS

BMW (UK) Limited reserves the right to alter prices and specifications without notice. BMW (UK) Limited has made every effort to ensure the accuracy of information but does not accept liability for any errors or omissions.

VED RATES

Annual VED (second year onwards) for cars costing over £40,000 is payable for five years. VED rates for brand new cars are determined by their CO₂ emissions figure. First year VED applies to the first year of ownership. Annual VED rates apply thereafter. The BMW X3 M Competition and BMW X4 M Competition models fall into one of the categories listed below:

CO ₂ emissions (g/km)	01-50	51-75	76-90	91-100	101-110	111-130	131-150	151-170	171-190	191-225	226-255	Over 255
First year VED (petrol and RDE2 diesel)	£10	£25	£110	£135	£155	£175	£215	£540	£870	£1,305	£1,850	£2,175
Annual VED – second year onwards (standard rate for petrol and diesel cars)	£150	£150	£150	£150	£150	£150	£150	£150	£150	£150	£150	£150
Annual VED – second year onwards (petrol and diesel cars over £40,000)	£475	£475	£475	£475	£475	£475	£475	£475	£475	£475	£475	£475

ON THE ROAD PRICE

The recommended on the road price includes:

Delivery and BMW Emergency Service	£825
Number plates	£25
Vehicle first registration fee	£55
First year Vehicle Excise Duty	See left

Insurance group figures refer to 50 Group Rating System. * = Figures shown are for comparability purposes; only compare fuel consumption and CO₂ figures with other cars tested to the same technical procedures. These figures may not reflect real life driving results, which will depend upon a number of factors including the accessories fitted (post-registration), variations in weather, driving styles and vehicle load. The CO₂ figures have been determined according to the WLTP test. WLTP has been used as the applicable CO₂ figure from 1 April 2020 for first year vehicle tax (VED) and from 6 April 2020 for company car tax (BIK). The CO₂ figures were previously based on the NEDC equivalent.

OPTIONAL EQUIPMENT PRICING.

	X3 M Competition	X4 M Competition	Price
---	------------------	------------------	-------

BMW EFFICIENT DYNAMICS

Auto Start-Stop			Std
Brake Energy Regeneration			Std
High-precision direct injection			Std
Individual BMW EfficientDynamics features may be excluded, depending on the optional equipment chosen. Your BMW Retailer will be pleased to provide you with more information.			

PAINTWORK

Metallic Available in Black Sapphire, Donington Grey, Phytonic Blue, Sophisto Grey or Toronto Red	met			Std
Non-metallic Available in Alpine White	uni			Std
BMW Individual Available in Sunstone	ind			£280

UPHOLSTERY

Full Merino leather Available in Adelaide Grey, Black or Sakhir Orange	LK			Std
BMW Individual Extended Merino leather Available in Ivory White / Black or Tartufo / Black	VA			Std
Merino leather / Alcantara Available in Black / Midrand Beige Bicolour	HD			£800

PACKAGES

Comfort package Comprises: – 248 Steering wheel heating – 322 Comfort Access with smart opener – 461 Seat backrest adjustment for rear seats ¹ – 493 Extended Storage	ZGM			£900
M Carbon package Comprises: – 1MP M Carbon precision strut – 4MC Interior trim, Carbon Fibre – 71C M Carbon exterior package	ZCA			£3,900
M Driver's package Comprises: – Optional BMW Driver Training ² – Top speed increase from 155mph to 177mph ³	7ME			£2,095
Ultimate package Comprises: – ZGM Comfort package (full contents) – ZCA M Carbon package (full contents) – 402 Panoramic glass sunroof – 4HA Seat heating, front and rear – 420 Sun protection glass – 4MC Interior trim, Carbon Fibre – 5AT Driving Assistant Plus – 5DN Parking Assistant Plus – 6CP Apple CarPlay® preparation – 6NW Enhanced Bluetooth with wireless charging – 6WD WiFi hotspot preparation – 6U8 BMW Gesture Control Not with ZCA / ZGM	ZUL			£8,500

Not with = these options are not available for ordering together. ¹ = Only available on X3 M Competition model, included as part of 493, Extended Storage, on X4 M Competition model. ² = For course specific information please visit www.bmw-drivingexperience.com
³ = Not available until the running-in inspection has been completed.

		X3 M Competition	X4 M Competition	Price
---	--	------------------	------------------	-------

INTERIOR TRIMS

Aluminium Carbon Structure with Pearl Chrome highlight	4WN	■	■	Std
Carbon Fibre	4MC	□	□	£600

BMW INDIVIDUAL INTERIOR TRIM

Piano Black	4ML	□	□	£300
-------------	-----	---	---	------

TRANSMISSION

Eight-speed M Steptronic transmission with DRIVELOGIC	2TB	■	■	Std
---	-----	---	---	-----

STEERING AND CHASSIS

Space-saver spare wheel	300	□	□	£190
-------------------------	-----	---	---	------

SAFETY AND TECHNOLOGY

Driving Assistant Comprises: – Approach Control warning – Crossing-traffic warning, rear – Lane Change warning – Lane Departure warning – Prevention of rear collision – Speed-limit information Not with 5AT	5AS	■	■	Std
Driving Assistant Plus Comprises all functionality of Driving Assistant (5AS), plus: – Active Cruise Control with Stop&Go function – Crossing-traffic warning, front – Crossroads warning – Evasion Aid – Lane Change Assistant – Lane Keeping Assistant with active side collision protection – Steering and Lane Control Assistant – Wrong-way warning Only with 4U0 Not with 5AS	5AT	□	□	£1,080
Parking Assistant Comprises: – Active Park Distance Control – Parking Assistant for parallel and lateral parking spaces – Reversing Assist camera	5DM	■	■	Std
Parking Assistant Plus Comprises all functionality of Parking Assistant (5DM), plus: – Remote 3D View – Surround View Not with 5DM	5DN	□	□	£500

	X3 M Competition		X4 M Competition	Price

SEATS

Electric Seat adjustment with memory and Active Ventilation Includes 459	4FH	<input type="checkbox"/>	<input type="checkbox"/>	£100
Seat heating, front and rear Not with 494	4HA	<input type="checkbox"/>	<input type="checkbox"/>	£280

EXTERIOR EQUIPMENT

M Carbon exterior package Comprises: – Carbon aeroblades at the bottom of front bumper – Carbon in-lay in the outer air inlets – Carbon mirror caps – Carbon rear diffuser – Carbon rear spoiler ¹ Only with ZCA / ZUL	71C	<input type="checkbox"/>	<input type="checkbox"/>	n/a*
Roof rails, High-gloss Shadowline	3MC	<input checked="" type="checkbox"/>	<input type="checkbox"/>	£265
Towbar, fully electric	3AC	<input type="checkbox"/>	<input type="checkbox"/>	£850

INTERIOR EQUIPMENT

Luggage compartment separating net	413	<input type="checkbox"/>	-	£110
Panoramic glass sunroof	402	<input type="checkbox"/>	<input type="checkbox"/>	£1,190
Sunblinds, rear windows	417	<input type="checkbox"/>	-	£180
Sun protection glass	420	<input type="checkbox"/>	<input type="checkbox"/>	£320

STEERING WHEELS

M leather steering wheel	710	<input checked="" type="checkbox"/>	<input checked="" type="checkbox"/>	Std
--------------------------	-----	-------------------------------------	-------------------------------------	-----

	X3 M Competition	X4 M Competition	Price
---	------------------	------------------	-------

AUDIO AND COMMUNICATION

BMW Emergency Call ¹	6AC	■	■	Std
BMW Gesture Control	6U8	□	□	£190
BMW Live Cockpit Professional Comprises: – 10.25" Control Display with Touch Functionality – 12.3" Digital Instrument Display – BMW Operating System 7.0 – iDrive Controller with Touch Function For further details, see BMW ConnectedDrive	6U3	■	■	Std
BMW Online Services ^{2, 3} Comprises: – BMW Connected+ – BMW Online Services – BMW Vehicle Apps – Intelligent Voice Control – Map updates: USB and Over-the-Air	6AK	■	■	Std
BMW TeleServices ¹	6AE	■	■	Std
Connected Package Professional Comprises: – Apple CarPlay ^{1, 4} – Concierge Services ^{2, 3} – Connected Music ^{2, 3} – Connected Navigation ^{2, 3} – Connected Parking – Connected Teaser ^{5, 6} – Real Time Traffic Information ^{2, 3} For further details, see BMW ConnectedDrive	6C4	■	■	Std
DAB digital radio	654	■	■	Std
Enhanced Bluetooth with wireless charging Includes 6WD	6NW	□	□	£430
Loudspeaker system – harman/kardon	688	■	■	Std
WiFi hotspot preparation ⁷ Only with 6NW	6WD	□	□	£0

Only with = these options must be ordered together. ¹ = Available and active without runtime limitations. Usage cannot be guaranteed permanently due to potential future technical developments (of the Service availability and/or Smartphone compatibility/operating systems). ² = Active for three years, renewable thereafter at an additional cost. ³ = Requires a free BMW ConnectedDrive account. ⁴ = Functions using a data connection will use data from the SIM card in the iPhone®. Additional data charges may be applied by the mobile network provider. Compatibility and functions may vary due to the model year of the iPhone® and the version of software installed on it. ⁵ = Includes BMW Music for a three month trial. For further details, see [BMW ConnectedDrive](#). ⁶ = Available and active for three months. Can be extended or renewed thereafter at an extra cost. ⁷ = Data subscription costs apply and must be purchased separately.

■ Standard equipment □ Optional equipment - Not available

			X3 M Competition	X4 M Competition	Price
---	--	--	------------------	------------------	-------

LIGHT ALLOY WHEELS

21" M light alloy V-spoke style 765 M, Bicolour Black	1Y5	<input checked="" type="checkbox"/>	<input checked="" type="checkbox"/>	Std
---	-----	-------------------------------------	-------------------------------------	-----



21" M light alloy V-spoke style 765 M, Bicolour Black

READY TO TAKE THE NEXT STEP?



Search for your nearest BMW Retailer.



Book your test drive now in the BMW model of your choice.



BMW CONNECTED DRIVE SERVICES.

BMW ConnectedDrive keeps driver and vehicle connected with the outside world. Digital services, driver-focused technologies and driver assistance systems provide more comfort, more entertainment and more safety. Increase your driving pleasure – with BMW ConnectedDrive.

For further information on BMW ConnectedDrive and the General Terms and Conditions of Service for ConnectedDrive, please see: www.bmw.co.uk/connecteddrive-information

The BMW ConnectedDrive Hotline is available on: +44 (0) 800 561 0555 from Monday to Friday 8am – 7pm and Saturday to Sunday 9am – 5pm.

GENERAL INFORMATION

BMW (UK) Ltd, Summit ONE, Summit Avenue, Farnborough, Hampshire, GU14 0FB (hereinafter referred to as “BMW”) provides the customer with certain vehicle-related information and assistance functions (hereinafter called “Services”) under the name of “BMW ConnectedDrive”. BMW collects, stores or processes car-related data in compliance with applicable law and only to the extent necessary to provide the Services. BMW does not collect, store or process personal data in course of the Services – except where this is explicitly stated in the service description of the individual Services. In the case of Services that require personal data to be collected, stored and processed so that such Services can actually be provided, BMW informs customers of this in advance by providing this data protection notice. The Services are provided by means of a SIM card installed in the vehicle.

CONNECTED DRIVE SERVICES DURATION

BMW Music	3 month trial
Apps	3 years
BMW Online Services	3 years
Concierge Services	3 years
Connected Music	3 years
Connected Navigation	3 years
Intelligent Voice Control	3 years
Map Updates	3 years
Real Time Traffic Information	3 years
Remote Services	3 years
Apple CarPlay® Preparation	Active without runtime limitations
BMW Emergency Call	Active without runtime limitations
BMW TeleServices	Active without runtime limitations

DEACTIVATION

You can have the BMW ConnectedDrive services deactivated through an authorised BMW centre, a BMW subsidiary or a BMW authorised workshop at any time. This also has the consequence that aspects of the emergency call in the vehicle as well as all remaining Services will no longer function.

You can additionally arrange for the remaining Services to be deactivated via “My BMW ConnectedDrive”.

If the vehicle is equipped with the legally required EU Emergency Call (as from April 2018) a deactivation of the BMW ConnectedDrive basic services will not deactivate the vehicle’s built-in SIM card. It has to remain active, so that the EU Emergency Call is functional all the time.

Services that are available and active without runtime limitations, cannot be guaranteed for permanent usage due to potential future technical developments (of the Service availability and/or Smartphone compatibility/operating systems).

CODE GLOSSARY.

1MA	M Sport exhaust system	423	Floor mats, velour	508	Park Distance Control (PDC), front and rear	6U3	BMW Live Cockpit Professional
1MP	M Carbon engine strut	430	Exterior mirrors – electrically folding with anti-dazzle	534	Air conditioning, automatic with three-zone control	6U8	BMW Gesture Control
248	Steering wheel heating	431	Interior rear-view mirror with automatic anti-dazzle function	552	BMW Icon Adaptive LED Headlights	6WD	WiFi hotspot preparation
2T4	M Sport differential	459	Seat adjustment – front, electric with driver memory	5AC	High-beam Assistant	710	M leather steering wheel
2TB	Eight-speed M Steptronic transmission with DRIVELOGIC	461	Seat backrest adjustment, rear	5AL	Dynamic Safety	712	M seats
2VB	Tyre Pressure Monitoring	465	Through-loading system	5AS	Driving Assistant	71C	M Carbon exterior package
2VC	BMW Mobility Kit	488	Lumbar support, driver and front passenger	5AT	Driving Assistant Plus	760	Exterior trim, High-gloss Shadowline
2VF	Adaptive M suspension	493	Extended storage	5AV	Active Guard	775	Headlining, Anthracite
300	Space-saver spare wheel	494	Seat heating, front	5DM	Parking Assistant	7ME	M Driver's package
322	Comfort Access with smart-opener	4AW	Instrument panel in Sensatec	5DN	Parking Assistant Plus	ind	BWW Individual paintwork
3AC	Towbar, fully electric	4FH	Electric Seat adjustment with memory and Active Ventilation	610	M Head-up Display	met	Metallic paintwork
3AG	Reversing Assist camera	4HA	Seat heating, front and rear	654	DAB digital radio	uni	Non-metallic paintwork
3KA	Acoustic glazing	4MC	Interior trim, Carbon Fibre	688	Loudspeaker system – harman/kardon	HD	Merino leather / Alcantara upholstery
3MC	Roof rails, High-gloss Shadowline	4ML	BMW Individual interior trim, Piano Black	6AC	BMW Emergency Call	LK	Full Merino leather upholstery
402	Panoramic glass sunroof	4UR	Ambient lighting	6AE	BMW TeleServices	VA	BMW Individual Extended Merino leather upholstery
413	Luggage compartment separating net	4WN	Interior trim, Aluminium Carbon Structure with Pearl Chrome highlight	6AK	BMW Online Services	ZCA	M Carbon package
417	Sunblinds, rear windows			6C4	Connected Package Professional	ZGM	Comfort package
420	Sun protection glass			6NW	Enhanced Bluetooth with wireless charging	ZUL	Ultimate package