



2021 BUICK

# ENVISION







# CONTENTS

**01** S(YOU)V

**02** LINEUP

**04** DESIGN

**05** SPORT TOURING

**06** AVENIR

**07** VERSATILITY

**08** CONNECTIVITY

**10** SAFETY

**12** INNOVATION

**13** COLORS

**14** FEATURES

**16** BUICK FAMILY



# s(YOU)v

Having a vehicle that truly fits your life can make all the difference.

That’s why Buick has created not one, but four distinctly different SUVs. Choose the one that best suits your lifestyle and you’ll be rewarded with performance, versatility, safety and style that feel custom-made just for you.

Simply put, we build every Buick not to change your life, but to fit your life. At the heart of our sport utility vehicles isn’t just utility. What’s at the heart of a Buick SUV is actually you.



2021 ENVISION



2021 ENCLAVE



2021 ENCORE



2021 ENCLAVE AVENIR



ALL-NEW ENVISION LINEUP

THREE CHOICES FOR  
ONE-OF-A-KIND JOURNEYS



ENVISION ESSENCE

▲ ENVISION

- Welcome lights animate on demand to greet your approach
- Available Amazon Alexa Built-In<sup>1</sup>
- QuietTuning™ technology with Active Noise Cancellation
- Available hands-free programmable power liftgate with LED logo projection
- Buick Driver Confidence Plus<sup>2</sup> comes standard and includes nine safety and driver-assistance features



ENVISION AVENIR

◀ FIRST-EVER ENVISION AVENIR

- Luxurious and exclusive details throughout the First-Ever Envision Avenir
- Signature Avenir grille with Black Ice chrome finish
- Avenir-exclusive 20" aluminum wheels with Pearl Nickel finish
- Premium LED taillamps with unique clear lenses
- Leather-appointed front seats with diamond-perforated quilting



ENVISION ESSENCE WITH SPORT TOURING PACKAGE

▲ FIRST-EVER ENVISION SPORT TOURING

- Available Sport Touring Package ups the ante with a blacked-out theme
- Distinctive dark finishes on the exterior accents and grille surround
- Exclusive 20" aluminum wheels with dark finish
- Boldest expression of Envision style

<sup>1</sup>Functionality is subject to limitations and varies by vehicle, infotainment system and location. Select service plan required. Certain Alexa Skills require account linking to use. Amazon, Alexa and all related marks are trademarks of Amazon.com, Inc., or its affiliates. See onstar.com for additional details.    <sup>2</sup>Buick Driver Confidence Plus: Automatic Emergency Braking, Lane Keep Assist with Lane Departure Warning, Forward Collision Alert, Front Pedestrian Braking, Following Distance Indicator, IntelliBeam auto high beams, Lane Change Alert with Side Blind Zone Alert, Rear Cross Traffic Alert and Rear Park Assist. Read the vehicle Owner's Manual for more important feature limitations and information.





Envision Essence shown in Cinnabar Metallic with available features.



## INTRODUCING THE ALL-NEW ENVISION

The 2021 Envision has more than a new look. With wider proportions, high-efficiency powertrain technology<sup>1</sup> and available next-gen connectivity, it's a whole-new experience. Built to inspire confidence, Envision features a modern new 2.0L Turbo ECOTEC engine and available features like intelligent All-Wheel Drive with active twin clutch.

Its advanced performance is matched with style that's designed to impress. Envision's stance is now lower, more aggressive and athletic. A distinctive grille, wing-shaped lighting and welcome lights that animate on demand from LED lamps add brilliance in every possible way.

Envision also makes confidence your constant companion with Buick Driver Confidence Plus<sup>2</sup>—a standard suite of advanced safety and driver-assistance technologies.

<sup>1</sup>EPA-estimated mpg city/hwy: 24/31 (FWD) and 22/29 (AWD). <sup>2</sup>Read the vehicle Owner's Manual for important feature limitations and information.



BUILT TO MAKE EVERY DRIVE  
PURPOSEFUL AND PERSONAL

Inside, Envision greets you with premium soft-touch materials, QuietTuning technology and available modern features including a Head-Up Display and an In-Vehicle Air Ionizer with Air Quality Indicator.

Behind the wheel, you'll appreciate how profoundly this SUV is designed around you. The instrument panel and available 10.2" diagonal touch-screen infotainment system<sup>1</sup> are both angled your way. Available perks like the massaging driver seat and heated leather-wrapped steering wheel keep you relaxed and comfortable. Electronic Precision Shift not only adds to Envision's responsive performance, it clears the way for additional space in the cockpit, including storage beneath the shifter that's perfect for your personal items.

Thoughtful design takes precedence everywhere, right down to the dual-winged center console that is uniquely split into two armrests so the compartment can be easily accessed from either side. With this level of driver-focused design, it's your way, all the way.



<sup>1</sup>Functionality varies by model. Full functionality requires compatible Bluetooth® and smartphone, and USB connectivity for some devices.



Envision Essence interior shown in Whisper Beige with available features.





# TAKE ENVISION IN A BOLD DIRECTION WITH SPORT TOURING

Dial up the attitude with the available Sport Touring (ST) Package. As the boldest expression of Envision style, ST offers a more aggressive, sport-inspired look. With dark finishes on the grille, window trim, wheel arch moldings, mirror caps and roof rails, the exterior accents are both dynamic and distinctive. The exclusive 20" aluminum wheels also feature a dark finish to further distinguish the Envision Sport Touring from the crowd.



Envision Essence with Sport Touring Package shown in Ebony Twilight Metallic.





## THE FIRST-EVER ENVISION AVENIR DELIVERS DETAILS ON A GRAND SCALE

The First-Ever Envision Avenir debuts as a stunning expression of Buick luxury. Designed to wrap you in modern refinement, this SUV distinguishes itself not only with its list of luxuries, but also with its attention to detail. On the outside, exclusive highlights include the signature Avenir grille, a feature made especially striking thanks to its Black Ice chrome finish. Other Avenir-only touches include 20" aluminum wheels with Pearl Nickel finish and premium taillamps with unique clear lenses. The closer you look, the more you are rewarded. With Envision Avenir, even the details have details.

On the inside, its charms are as extensive as the cabin is spacious. Exclusive features include diamond-perforated quilting on the leather-appointed front seats plus textured wood-tone accents on the door panels. Settle in as the massaging driver's seat welcomes you into an oasis of perks and premium amenities. Thoughtfully designed for maximum hospitality, Envision Avenir is all about you.

FIRST-EVER ENVISION AVENIR



Envision Avenir shown in Satin Steel Metallic with available features.

[Back to Contents](#)



DESIGNED TO ACCOMMODATE  
POSSIBILITIES

Envision is crafted to be truly premium. It is also crafted to be truly capable. With the ideal balance of flexibility and refinement, this is space that you can make your own.

**EXERCISE YOUR OPTIONS** Envision's cabin is a premium space that puts a premium on versatility. The 40/60 split rear seats make for a wide range of cargo and passenger configurations. Effortlessly fold the rear seats flat and the generous cargo space becomes substantially roomier. Even the center console is thoughtfully designed to provide dual-winged access to storage space as well as a stylish and comfortable armrest.

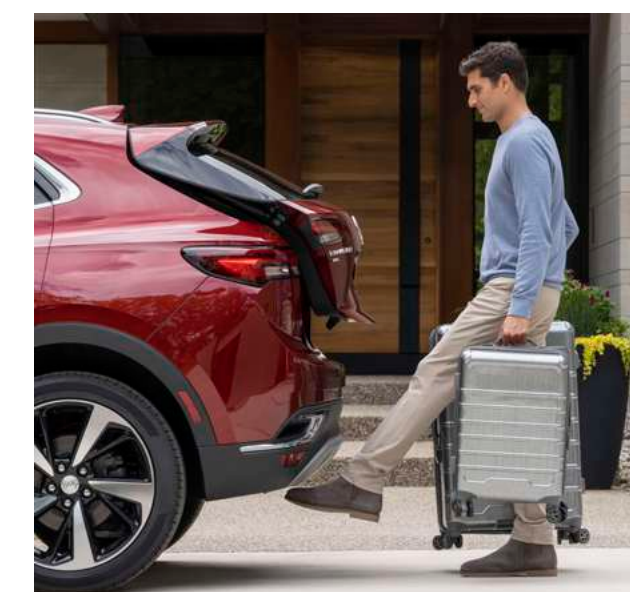
### HANDS-FREE PROGRAMMABLE POWER LIFTGATE WITH LED LOGO PROJECTION

Envision is there to help with the available hands-free programmable power liftgate with LED logo projection. With the keyless entry fob in your pocket, simply kicking your foot over the LED-projected Buick logo provides access to the cargo area. For even greater convenience, the programmable liftgate allows you to adjust how high it opens.

**INTEGRATED ROOF RAILS** Wherever your travels take you, integrated aluminum roof rails and available dealer-installed accessory cross rails (late availability) make it easy to attach and carry all kinds of gear.

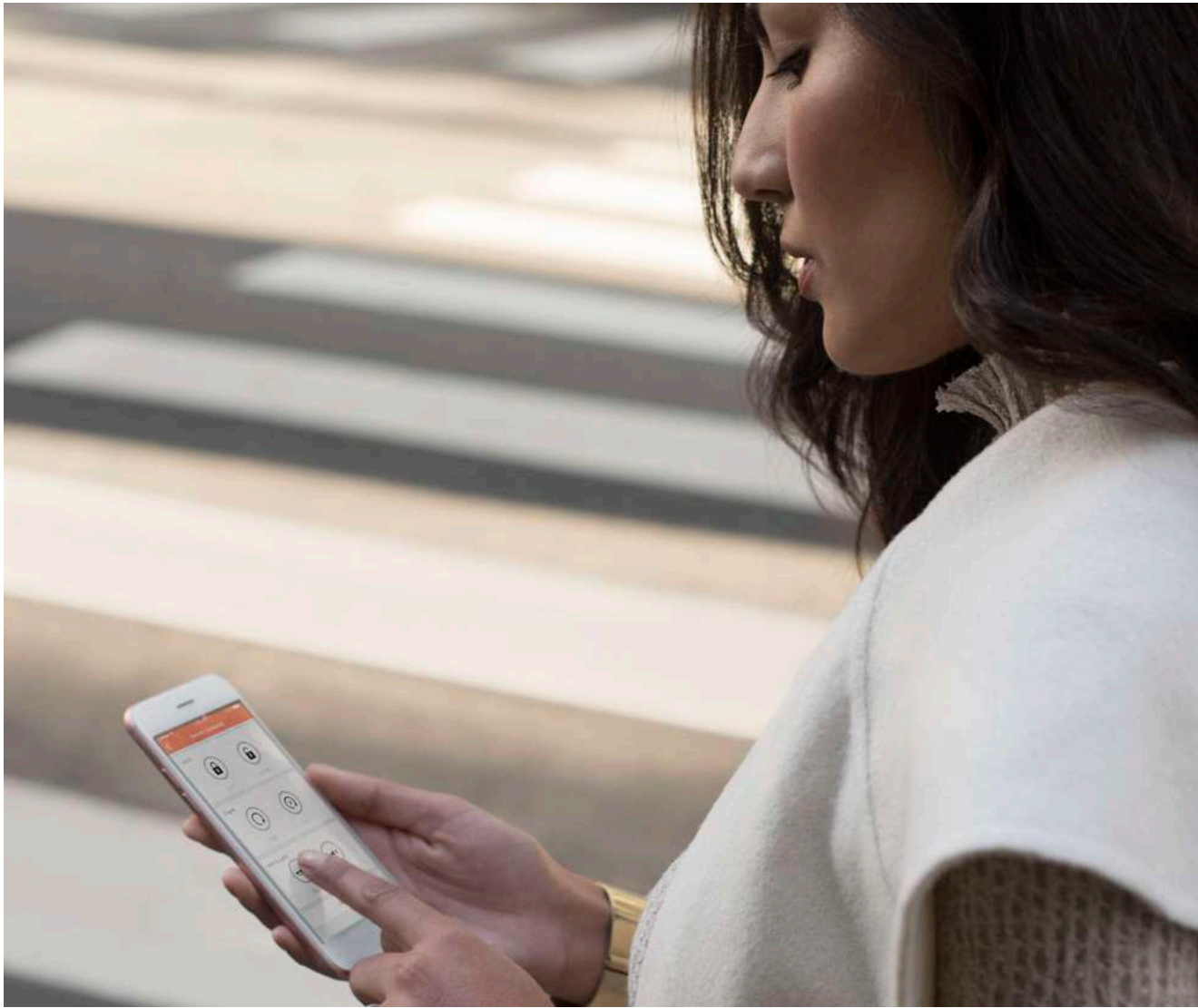


## VERSATILITY





# GIVING CONNECTIVITY A STARRING ROLE



**BUICK CONNECTED SERVICES** Your new Buick comes with a host of available in-vehicle benefits. Connected Access<sup>1</sup> offers the latest technology to help you improve every drive—and you get standard connectivity for up to 10 years, giving you access to features like monthly diagnostic emails and the ability to order and pay for takeout food and purchase fuel through your vehicle’s infotainment system.<sup>2</sup> You can also take your ownership experience to new levels by upgrading to other Buick Connected Services.

**AVAILABLE 4G LTE WI-FI® HOTSPOT<sup>3</sup>** Stay connected with an available 4G LTE Wi-Fi® Hotspot. The fast and reliable connection can support up to seven devices so the whole gang can stream, surf and post to their hearts’ content when you’re on the go.



**WIRELESS CHARGING<sup>4</sup>** Cut the cord with the help of available wireless smartphone charging. Just place your compatible device in front of the center console and charge with ease.

**SIRIUSXM® RADIO<sup>5</sup>** Your new Envision comes with a 3-month All Access trial. Listen to commercial-free music plus every major sporting event, news, talk and more, both inside your vehicle and out—with the SXM app.

**SPOTIFY®<sup>6</sup>** Envision elevates your in-car infotainment experience with available Spotify. With your paid data plan, enjoy access to more than 60 million tracks, as well as personalized radio, playlists and almost 2 million podcast titles.

<sup>1</sup>Standard connectivity available only to original purchaser for up to 10 years. Connected Services vary by vehicle model and require active service plan, working electrical system, cell reception and GPS signal. Does not include emergency or security services. See onstar.com for details and further plan limitations.   <sup>2</sup>Functionality varies by model. Full functionality requires compatible Bluetooth and smartphone, and USB connectivity for some devices.   <sup>3</sup>Service varies with conditions and location. Requires active service plan and paid AT&T® data plan. See onstar.com for details and limitations. Vehicle must be on or in accessory position for Wi-Fi® to function.   <sup>4</sup>The system wirelessly charges one compatible mobile device. Some phones have built-in wireless charging technology and others require a special adapter/back cover. To check for phone or other device compatibility, see my.buick.com/learn or consult your carrier.   <sup>5</sup>If you decide to continue service after your trial, your selected subscription plan will automatically renew thereafter. You will be charged at then-current rates. Fees and taxes apply. To cancel, you must call SiriusXM at 1-866-635-2349. See SiriusXM Customer Agreement for complete terms at siriusxm.com. All fees and programming subject to change. ©2021 SiriusXM Radio, Inc. All rights reserved.   <sup>6</sup>Requires free or Premium Spotify account. Visit spotify.com on your smartphone, tablet or computer to sign up. Available only on vehicles equipped with iOS, IOU or IOT infotainment system.   <sup>7</sup>Valid offers can vary. For latest offers, check Marketplace through the vehicle mobile app or your vehicle’s infotainment system. Third-party trademarks are the property of their respective third-party owners and used under agreement.

## CONNECTIVITY

**IN-VEHICLE COMMERCE VIA BUICK MARKETPLACE<sup>7</sup>** Powered by innovation, Envision offers you a smart way to save time and money with available Buick Marketplace.

**Reserve a Table** Make on-the-go reservations at thousands of restaurants nationwide through Yelp. You can search for restaurants in a 25-mile radius and reserve a table—all in a few easy steps.

**Order Takeout** Place a takeout order from restaurants like Applebee’s® and IHOP®. Or place either a takeout or delivery order from Domino’s Pizza.

**Fill Your Tank** Activate the pump, pay for fuel and earn valuable rewards right from your vehicle’s infotainment system<sup>2</sup> at participating Exxon®, Mobil®, Shell®, Chevron®, Texaco®, Phillips 66®, Conoco® and 76® stations. That’s how to get your fill of convenience.

**Find a Space** Enjoy hassle-free parking via ParkWhiz. Now you can easily find, book and pay for a spot in cities across the country.



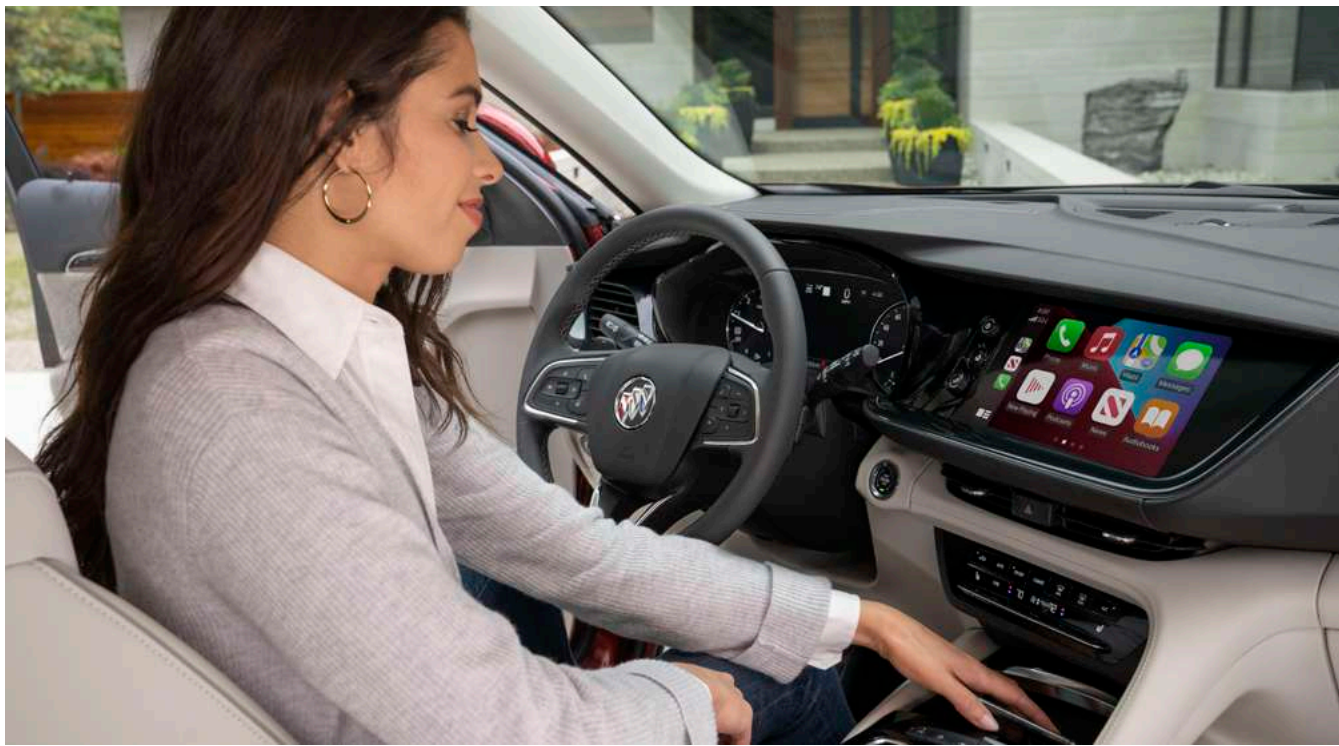


# YOUR WISH IS LITERALLY ITS COMMAND

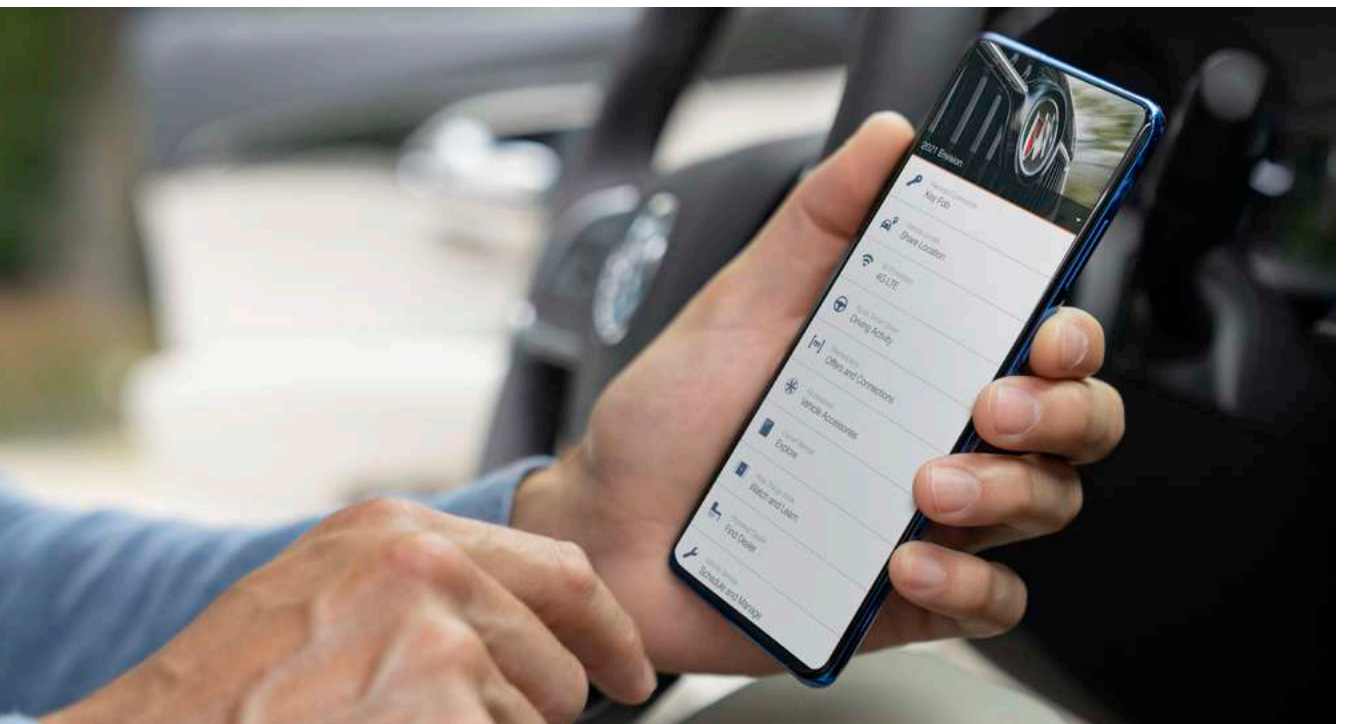
Take the wheel of the All-New Envision and you can take Alexa along for the ride. The voice-activated convenience of Amazon Alexa Built-In<sup>1</sup> is just one of the experience-enhancing technologies offered in this S(YOU)V.

**ALEXA BUILT-IN** With available Alexa Built-In, you can listen to music, make a phone call with your Bluetooth-connected phone,<sup>2</sup> get directions sent directly to the available embedded Navigation<sup>3</sup> screen (if properly equipped) and add items to your Whole Foods shopping cart. You can even control your compatible smart home devices<sup>4</sup> to do things like turn on the lights or adjust the thermostat.

**WIRELESS APPLE CARPLAY™<sup>5</sup> COMPATIBILITY** Enjoy easy access to music and maps from your iPhone® or other compatible smartphone to make calls, send messages and more—all through your vehicle’s touch-screen or with your voice through Siri.®



**WIRELESS ANDROID AUTO™<sup>6</sup> COMPATIBILITY** Convenience and control are always top of mind inside the All-New Envision. Connect your compatible Android™ or other smartphone to make calls and access your favorite apps, text messages and music by using your voice. Just say “Hey Google” or press and hold the voice-control button on your steering wheel.



**myBUICK MOBILE APP<sup>7</sup>** When you download the available myBuick mobile app, you can schedule service, get tips to help improve your driving, access instant offers from select nearby merchants and enjoy other ways to simplify your ownership experience. When you upgrade to Remote Access,<sup>7</sup> you can remotely start and stop your vehicle (if equipped), check fuel levels and even set and share notifications for vehicle arrivals and departures.

<sup>1</sup>Functionality is subject to limitations and varies by vehicle, infotainment system and location. Select service plan required. Certain Alexa Skills require account linking to use. Amazon, Alexa and all related marks are trademarks of Amazon.com, Inc., or its affiliates. See onstar.com for additional details. <sup>2</sup>Go to my.buick.com/learnabout/bluetooth to find out which phones are compatible with the vehicle. Full Bluetooth feature functionality varies by device, model and software version. <sup>3</sup>Connected Navigation and real-time Points of Interest (POI) only available on properly equipped vehicles. Requires paid plan or trial. Map coverage available in the U.S., Puerto Rico and Canada. See onstar.com for details and limitations. <sup>4</sup>Certain Alexa functionality is dependent on smart home technology. <sup>5</sup>Vehicle user interface is a product of Apple® and its terms and privacy statements apply. Requires compatible iPhone® and data plan rates apply. Apple CarPlay is a trademark of Apple, Inc. Siri, iPhone and Apple Music are trademarks of Apple, Inc., registered in the U.S. and other countries. <sup>6</sup>Vehicle user interface is a product of Google™ and its terms and privacy statements apply. Requires the Android Auto app on Google Play and a compatible Android smartphone. Data plan rates apply. You can check which smartphones are compatible at g.co/androidauto/requirements. Google, Android and Android Auto are trademarks of Google LLC. <sup>7</sup>The myBuick mobile app requires compatible Apple® or Android device and data connection. Remote Access Plan does not include emergency or security services. See onstar.com for details and limitations. Lock/unlock feature requires automatic locks. Remote start requires GM factory-installed and enabled remote-start system. Vehicle locate is in the U.S., Canada and Mexico only. Requires select paid plan. Service is designed to locate compatible connected vehicles. Eligibility varies by vehicle model. Functionality varies by mobile device. Message and data rates may apply. Requires contact method on file and enrollment to receive alerts. Terms and limitations apply.





## A PRIORITY OF SAFETY

**PERCEIVE** To help make you more aware of your surroundings, Envision empowers you with available technologies that help raise your awareness of the road around you.

**PREVENT** When certain hazards are detected, available features on your Buick Envision can trigger alerts to let you know.

**PROTECT** In the event of a crash, strong structural dynamics, intelligent airbag systems<sup>1</sup> and other advanced safety systems work in concert to help protect you and your passengers.

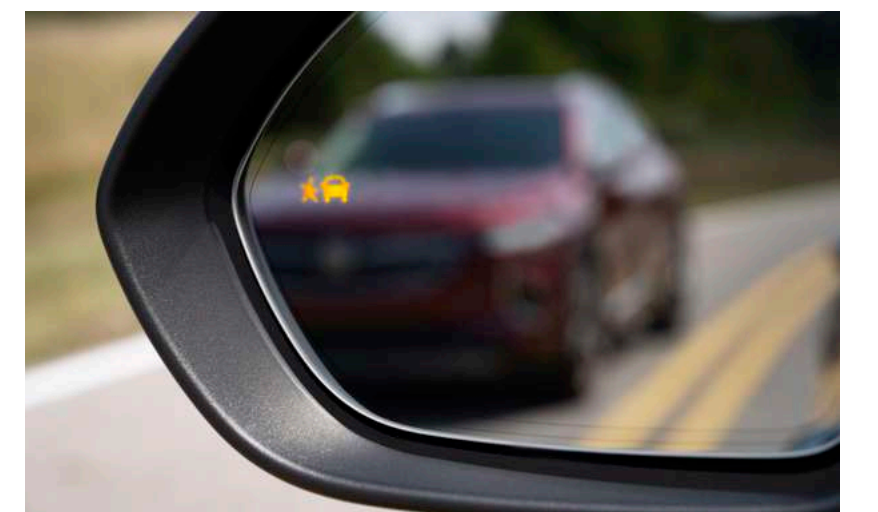
**BUICK DRIVER CONFIDENCE PLUS** To make confidence your constant companion, a suite of advanced safety and driver-assistance technologies comes standard on the All-New Envision. (See details on the following page.)

## AVAILABLE DRIVER-ASSISTANCE AND SAFETY TECHNOLOGIES

HD Surround Vision • Head-Up Display • Front Park Assist • Rear  
Camera Mirror • Adaptive Cruise Control • Enhanced Automatic  
Emergency Braking • Enhanced Automatic Parking Assist

For a detailed look at the active safety technologies available in the 2021 Envision, please visit [buick.com/21envision/safety](https://www.buick.com/21envision/safety).

<sup>1</sup>A NOTE ON CHILD SAFETY: Always use seat belts and the correct child restraint for your child's age and size, even with airbags. Even in vehicles equipped with the Passenger Sensing System, children are safer when properly secured in a rear seat in the appropriate infant, child or booster seat. Never place a rear-facing infant restraint in the front seat of any vehicle equipped with an active frontal airbag. See your vehicle Owner's Manual and child safety seat instructions for more safety information.



Safety or driver-assistance features are no substitute for the driver's responsibility to operate the vehicle in a safe manner. The driver should remain attentive to traffic, surroundings and road conditions at all times. Visibility, weather and road conditions may affect feature performance. Read the vehicle Owner's Manual for more important feature limitations and information.





## ONSTAR: DESIGNED FOR ADDED PEACE OF MIND

As you travel with the ones you care about most, available OnStar® is with you to help empower every moment. With the available OnStar Safety & Security Plan,<sup>1</sup> you can have a 24/7 lifeline to specially trained Advisors ready to help if you've been in a crash, your vehicle's been stolen,<sup>2</sup> you're lost or you need Roadside Assistance.<sup>3</sup>



**EMERGENCY HELP WHEN IT MATTERS MOST** If you are in a detected crash, available Automatic Crash Response<sup>4</sup> can use your vehicle's built-in sensors to connect you to an Emergency-Certified Advisor<sup>5</sup> who can contact first responders to get you help, even if you can't ask for it. Using Injury Severity Prediction technology, these specially trained Advisors can provide first responders with critical information, including the likelihood of serious injury. You can feel confident knowing specially trained OnStar Advisors are ready to help, 24/7.

**SECURITY YOU CAN TRUST** If your vehicle is stolen, OnStar Advisors can help with available Stolen Vehicle Assistance.<sup>2</sup> They can pinpoint your vehicle's location and work with local authorities to help recover it. They can even slow it down if authorities deem conditions are appropriate. Plus, with Theft Alarm Notification,<sup>2</sup> if your vehicle alarm sounds, they can let you know via text, email or a phone call.

<sup>1</sup>OnStar plan, working electrical system, cell reception and GPS signal required. OnStar links to emergency services. See [onstar.com](http://onstar.com) for details and limitations.

<sup>2</sup>Requires armed GM factory-installed theft-deterrent system and enrollment to receive alerts. Additional texting and data rates apply. Doesn't prevent theft, damage or loss. <sup>3</sup>Roadside services provided by Allstate Roadside Services. <sup>4</sup>Not all vehicles may transmit all crash data. <sup>5</sup>OnStar Emergency Advisors are certified by the International Academies of Emergency Dispatch.



CONFIDENCE, BACKED BY INNOVATION

**BUICK DRIVER CONFIDENCE PLUS** This suite of advanced safety and driver-assistance technologies is standard and includes all of the following features: Forward Collision Alert • Automatic Emergency Braking • Lane Keep Assist with Lane Departure Warning • Following Distance Indicator • IntelliBeam auto high beams • Front Pedestrian Braking • Lane Change Alert with Side Blind Zone Alert • Rear Cross Traffic Alert • Rear Park Assist.

**REAR CAMERA MIRROR** The available Rear Camera Mirror uses a camera to provide you a wide and less-obstructed view behind the vehicle while you're driving. You can switch between the camera view and a traditional rearview mirror. Brightness, zoom and vertical-tilt adjustment add even more ways to see what's behind you. Plus, there's a washer to help clean the Rear Camera Mirror lens if it becomes dirty.

**ENHANCED AUTOMATIC PARKING ASSIST** This available feature can search for a parallel or perpendicular parking space, then steer and brake your vehicle into that space while shifting gears as needed. It can also help you unpark your vehicle after parallel parking. While the feature parks or unparks, you need to remain in your vehicle and be prepared to override and take control.

**ADAPTIVE CRUISE CONTROL** Available Adaptive Cruise Control can automatically maintain a driver-selected gap time from the detected vehicle you're following while you steer. This feature reduces the need to frequently brake and accelerate when you're driving.

**HD SURROUND VISION** Available HD Surround Vision uses multiple cameras to display a digital overhead image of the area around your vehicle along with Rear Vision Camera or front views. It works at low speeds and may help you park and avoid nearby objects. You can select additional views on your camera display.



Safety or driver-assistance features are no substitute for the driver's responsibility to operate the vehicle in a safe manner. The driver should remain attentive to traffic, surroundings and road conditions at all times. Visibility, weather and road conditions may affect feature performance. Read the vehicle Owner's Manual for more important feature limitations and information.

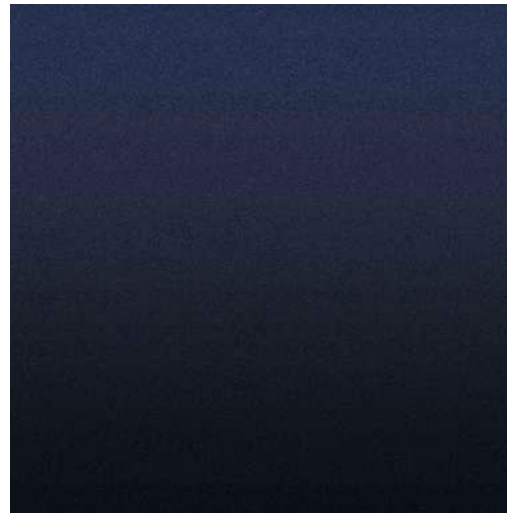
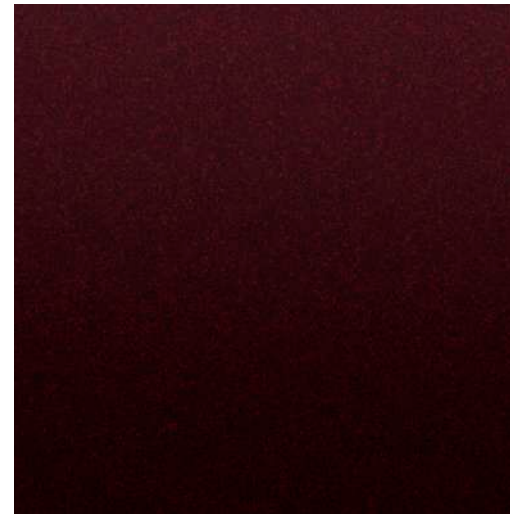


## COLOR PALETTE

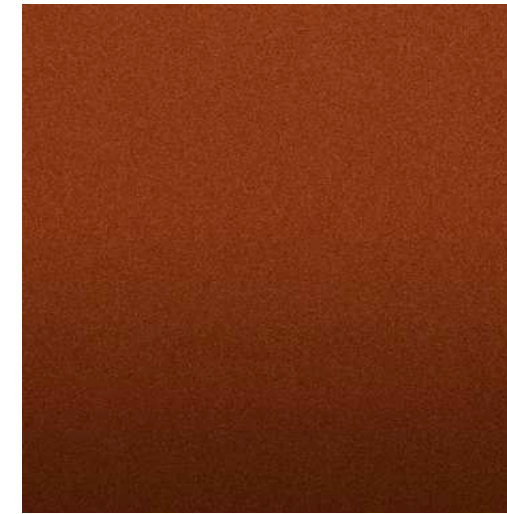
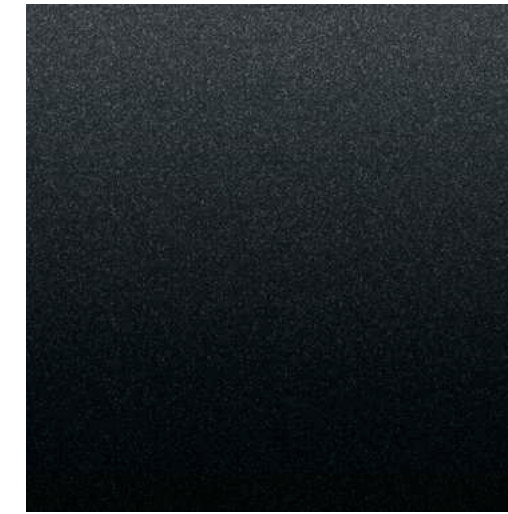
## EXTERIOR COLORS

Exterior colors are subject to change. Visit [buick.com](http://buick.com) for current availability.

Summit White

Dark Moon Blue Metallic<sup>1,2</sup>Rich Garnet Metallic<sup>1,3</sup>Cinnabar Metallic<sup>1</sup>

Satin Steel Metallic<sup>1</sup>

Burnished Bronze Metallic<sup>1,2,4</sup>

Ebony Twilight Metallic<sup>1</sup>

## WHEELS

A 18" Aluminum With Bright  
Silver Finish  
Standard on Preferred.

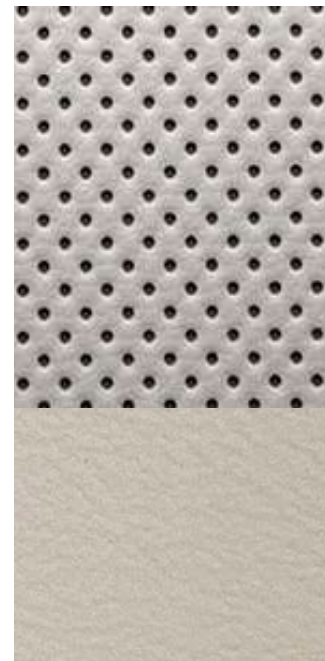
**B** 18" Machined Aluminum With  
Charcoal Metallic Pockets  
Standard on Essence.

**C** 20" Diamond-Cut Aluminum With Carbon Flash Metallic Pockets Available on Essence.

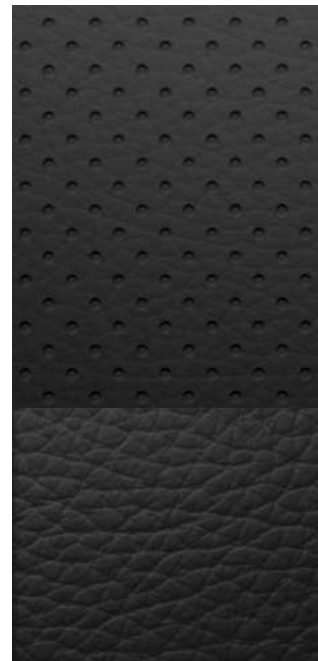
**D** 20" Aluminum With Dark Finish  
Standard on Sport Touring Package.

E 20" Aluminum With Pearl Nickel Finish  
Standard on Avenir.

## INTERIOR COLORS

Whisper Beige Cloth<sup>5</sup> or Leather-Appointed Seating<sup>5</sup> (Shown)

Cloth With Leatherette<sup>6</sup>  
Perforated Leather-Appointed<sup>7</sup>  
Diamond-Perforated Leather-Appointed<sup>8</sup>



Ebony Cloth or Leather-Appointed Seating (Shown)

Cloth With Leatherette<sup>6</sup>  
Perforated Leather-Appointed<sup>7</sup>  
Diamond-Perforated Leather-Appointed<sup>8</sup>





KEY FEATURES

● STANDARD   ○ AVAILABLE   – NOT AVAILABLE				PREFERRED	ESSENCE	AVENIR
2.0L TURBO ECOTEC 4-CYLINDER ENGINE WITH STOP/START TECHNOLOGY				●	●	●
9-SPEED AUTOMATIC TRANSMISSION				●	●	●
ENGINE AIR FILTER MONITOR				●	●	●
ELECTRONIC PRECISION SHIFT WITH DRIVE MODE SELECTOR				●	●	●
MACPHERSON STRUT FRONT SUSPENSION AND 5-LINK REAR SUSPENSION				●	●	●
BLUETOOTH® CONNECTIVITY¹				●	●	●
WIRELESS APPLE CARPLAY™² AND WIRELESS ANDROID AUTO™³ COMPATIBILITY				●	●	●
BUICK QUIETTUNING™ WITH ACTIVE NOISE CANCELLATION				●	●	●
FRONT PEDESTRIAN BRAKING⁴				●	●	●
LANE KEEP ASSIST WITH LANE DEPARTURE WARNING⁴				●	●	●
FORWARD COLLISION ALERT⁴				●	●	●
AUTOMATIC EMERGENCY BRAKING⁴				●	●	●
FOLLOWING DISTANCE INDICATOR⁴				●	●	●
INTELLIBEAM AUTO HIGH BEAMS				●	●	●
LANE CHANGE ALERT WITH SIDE BLIND ZONE ALERT⁴				●	●	●
REAR CROSS TRAFFIC ALERT⁴				●	●	●
REAR PARK ASSIST⁴				●	●	●
TEEN DRIVER				●	●	●
BUILT-IN WI-FI® HOTSPOT⁵ WITH AVAILABLE 4G LTE DATA (Includes data trial for 1 month or 3GB, whichever comes first)				●	●	●
IN-VEHICLE AIR IONIZER WITH AIR QUALITY INDICATOR				○	●	●
REMOTE START				○	●	●
DUAL-ZONE AUTOMATIC CLIMATE CONTROL				○	●	●
HEATED LEATHER-WRAPPED STEERING WHEEL				○	●	●
HEATED FRONT SEATS				○	●	●
HANDS-FREE PROGRAMMABLE POWER LIFTGATE WITH LED LOGO PROJECTION				○	●	●
10.2" DIAGONAL BUICK INFOTAINMENT SYSTEM⁶				○	●	●
AMAZON ALEXA BUILT-IN⁷				○	○	○
INTELLIGENT ALL-WHEEL DRIVE WITH ACTIVE TWIN CLUTCH (AWD models only)				○	○	○
8" DIAGONAL COLOR DRIVER INFORMATION CENTER				—	●	●

KEY FEATURES

● STANDARD   ○ AVAILABLE   – NOT AVAILABLE				PREFERRED	ESSENCE	AVENIR
FRONT PARK ASSIST⁴				—	○	●
HD SURROUND VISION⁴				—	○	●
HEAD-UP DISPLAY				—	○	●
BOSE® 9-SPEAKER PREMIUM AUDIO SYSTEM				—	○	●
PANORAMIC MOONROOF				—	○	○
VENTILATED FRONT SEATS				—	—	●
MASSAGING DRIVER SEAT				—	—	●
WIRELESS SMARTPHONE CHARGING⁸				—	—	●
ADAPTIVE CRUISE CONTROL⁴				—	—	○
CONTINUOUS DAMPING CONTROL				—	—	○

See your Buick dealer or [buick.com](#) for more feature details and requirements.

PACKAGES

Comfort and Convenience Package (Available on Preferred)	Includes hands-free programmable power liftgate with LED logo projection, heated steering wheel, heated front seats, remote start, dual-zone automatic climate control, In-Vehicle Air Ionizer with Air Quality Indicator, 10.2" diagonal Buick Infotainment System⁶ and 7-speaker enhanced audio system with amplifier.
Technology I Package (Available on Essence)	Includes Front Park Assist,⁴ HD Surround Vision,⁴ 10.2" diagonal Buick Infotainment System⁶ with Navigation,⁹ Bose 9-speaker premium audio system, memory card receptacle, HD Radio, Head-Up Display and Universal Home Remote.
Technology II Package (Available on Avenir)	Includes Enhanced Automatic Emergency Braking,⁴ Enhanced Automatic Parking Assist,⁴ LED headlamps with enhanced functionality, Adaptive Cruise Control,⁴ Rear Camera Mirror⁴ with washer and Continuous Damping Control.
Sport Touring Package (Available on Preferred and Essence)	Includes 20" wheels with dark finish; unique ST badging; dark finish on grille surround, mesh inserts, roof rails, lower trim, wheel arch moldings, faux exhaust bezels, window trim and mirror caps; and rear cargo compartment cover.

See your Buick dealer or [buick.com](#) for more feature details and requirements.

¹Go to [my.buick.com/learnabout/bluetooth](#) to find out which phones are compatible with the vehicle. Full Bluetooth feature functionality varies by device, model and software version.   ²Vehicle user interface is a product of Apple® and its terms and privacy statements apply. Requires compatible iPhone® and data plan rates apply. Apple CarPlay is a trademark of Apple, Inc. Siri, iPhone and Apple Music are trademarks of Apple, Inc., registered in the U.S. and other countries.   ³Vehicle user interface is a product of Google™ and its terms and privacy statements apply. Requires the Android Auto app on Google Play and a compatible Android™ smartphone. Data plan rates apply. You can check which smartphones are compatible at [g.co/androidauto/requirements](#). Android Auto is a trademark of Google LLC.   ⁴Read the vehicle Owner's Manual for important feature limitations and information.   ⁵Service varies with conditions and location. Requires active service plan and paid AT&T® data plan. See [onstar.com](#) for details and limitations.   ⁶Functionality varies by model. Full functionality requires compatible Bluetooth and smartphone, and USB connectivity for some devices.   ⁷Functionality is subject to limitations and varies by vehicle, infotainment system and location. Select service plan required. Certain Alexa Skills require account linking to use. Amazon, Alexa and all related marks are trademarks of Amazon.com, Inc., or its affiliates. See [onstar.com](#) for additional details.   ⁸The system wirelessly charges one compatible mobile device. Some phones have built-in wireless charging technology and others require a special adapter/back cover. To check for phone or other device compatibility, see [my.buick.com/learn](#) or consult your carrier.   ⁹Map coverage available in the United States, Puerto Rico and Canada.



SPECIFICATIONS

DIMENSIONS (INCHES)	
Wheelbase	109.4
Overall length	182.5
Body width	74.1
Overall height	64.6
Track width, front/rear	63.3/63.3
Head room, front/rear	39.6/38.9
Shoulder room, front/rear	56.7/55.9
Hip room, front/rear	55.1/47.4
Leg room, front/rear	40.4/39.3

CAPACITIES	
Engine Type	2.0L Turbo with Stop/Start technology
Transmission	9-speed automatic
Horsepower	228 @ 5000 rpm
Torque	258 lb-ft @ 1500-4000 rpm
EPA-estimated mpg	24 city/31 hwy (FWD), 22 city/29 hwy (AWD)
Fuel Tank (approx.), FWD/AWD	15.9/16.1 gallons
Cargo Volume <sup>1</sup>	Behind first-row seats with second and third row folded: 52.7 cu. ft.  Behind second-row seats: 25.2 cu. ft.

<sup>1</sup>Cargo and load capacity limited by weight and distribution.



We have tried to make this catalog comprehensive and factual. We reserve the right, however, to make changes at any time, without notice, in prices, colors, materials, equipment, specifications, models and availability. Specifications, dimensions, measurements, ratings and other numbers in this catalog and other printed materials provided at the dealership or affixed to vehicles are approximations based on design and engineering drawings, prototypes and laboratory tests. Your vehicle may differ due to variations in manufacture and equipment. Since some information may have been updated since the time of printing, please check with your Buick dealer for complete details. Buick reserves the right to lengthen or shorten the model year for any product for any reason, or to start and end model years at different times. Certain vehicle features may lose their usefulness over time due to obsolescence from technological changes. Unless otherwise noted, all claims based on GM Compact SUV segment and latest available competitive information. Excludes other GM vehicles.

**3-YEAR/36,000-MILE BUMPER-TO-BUMPER LIMITED WARRANTY** Buick will warrant each 2021 Envision from bumper to bumper for 3 years/36,000 miles (whichever comes first; see dealer for details), with no deductible, from the original in-service date of the vehicle, for warrantable repairs that are required as a result of defects due to materials and/or workmanship. Cosmetic corrosion resulting from defects is also covered under the Bumper-to-Bumper Limited Warranty. In addition, rust-through corrosion will be covered for 6 years/100,000 miles (whichever comes first; see dealer for details).

**POWERTRAIN LIMITED WARRANTY** Every 2021 Buick Envision comes with a 5-year/60,000-mile (whichever comes first) transferable Powertrain Limited Warranty. 24/7 Roadside Assistance and Courtesy Transportation are also offered for the duration of the Powertrain Limited Warranty. Please see your Buick dealer for details.

**AN IMPORTANT NOTE ABOUT ALTERATIONS AND WARRANTIES** Installations or alterations to the original equipment vehicle (or chassis) as distributed by General Motors are not covered by the General Motors New Vehicle Limited Warranty. The special body company, assembler, equipment installer or upfitter is solely responsible for warranties on the body or equipment and any alterations (or any effect of the alterations) to any of the parts, components, systems or assemblies installed by GM. General Motors is not responsible for the safety or quality of design features, materials or workmanship of any alterations by such suppliers.

**ASSEMBLY** Buick vehicles and their components are assembled or produced by different operating units of General Motors, its subsidiaries or suppliers to GM worldwide. We sometimes find it necessary to produce Buick vehicles with different or differently sourced components than originally scheduled. Since some options may be unavailable when your vehicle is assembled, we suggest that you verify that your vehicle includes the equipment you ordered or, if there are changes, that they are acceptable to you.

IMPORTANT WORDS

**ENGINES** Buick products are equipped with engines produced by GM Powertrain or other suppliers to GM worldwide. The engines in Buick products may also be used in other GM makes and models.

**TRAILERING AND OFF-ROAD DRIVING INFORMATION** Please go to [buick.com](https://www.buick.com) and carefully review the vehicle Owner’s Manual for important safety information about trailering or off-road driving in your vehicle.

**ONSTAR® AND BUICK CONNECTED SERVICES** Connected vehicle services vary by vehicle model and require working electrical system, cell reception and GPS signal. Requires active service plan. OnStar links to emergency services. See [onstar.com](https://onstar.com) for details and limitations.

**A NOTE ON CHILD SAFETY** Always use seat belts and the correct child restraint for your child’s age and size, even with airbags. Even in vehicles equipped with the Passenger Sensing System, children are safer when properly secured in a rear seat in the appropriate infant, child or booster seat. Never place a rear-facing infant restraint in the front seat of any vehicle equipped with an active frontal airbag. See your vehicle Owner’s Manual and child safety seat instructions for more safety information.

**FLEET ORDERS** Some standard content may be deleted with fleet orders. See dealer for details.

**GMMOBILITY.COM (1-800-323-9935)** GM Mobility offers financial assistance for eligible adaptive equipment to make automotive travel easier for persons with disabilities or special transportation needs. To learn more about special GM Mobility offers, visit [gmmobility.com](https://gmmobility.com).

GM, the GM logo, Buick, the Buick emblem, OnStar, the OnStar emblem and the slogans, emblems, vehicle model names, vehicle body designs and other marks appearing in this catalog are the trademarks and/or service marks of General Motors, its subsidiaries, affiliates or licensors. The Facebook logo is a trademark of Facebook, Inc. The Twitter logo is a trademark of Twitter, Inc. Android, Android Auto, Google Play, YouTube and other marks are trademarks of Google LLC. Apple CarPlay, Siri, iPhone and Apple Music are trademarks of Apple, Inc. The Instagram logo is a trademark of Instagram, Inc. ©2021 General Motors. All rights reserved.

**To learn more about why Certified Service is the perfect companion for your Envision, visit [mycertifiedservice.com](https://mycertifiedservice.com).**





# THE BUICK S(YOU)V LINEUP

Visit [buick.com](https://www.buick.com) to learn more about how Buick SUVs are designed around you and the way you live.



ENCORE



SEATS

5



EPA-ESTIMATED MPG—CITY/HWY (FWD)

25/30<sup>1</sup>



MAX CARGO CU. FT.

48.4<sup>2</sup>

Expect big things from this compact SUV. Agile and fun to drive, Encore not only helps you navigate everyday life, it helps you thrive along the way.

- Turbocharged power and nimble maneuverability
- Available 4G LTE Wi-Fi<sup>®</sup> Hotspot<sup>3</sup> helps keep you intelligently connected
- Available All-Wheel Drive activates automatically for enhanced traction when it detects slip
- Suite of available safety and driver-assistance technologies includes Lane Departure Warning<sup>4</sup>



ENCORE GX



SEATS

5



EPA-ESTIMATED MPG—CITY/HWY (FWD)

28/31<sup>5</sup>



MAX CARGO CU. FT.

50.2<sup>6</sup>

Smart, versatile and ridiculously stylish, Encore GX is practically custom-made for the way you live. With its host of available technologies, you're always a step ahead in Encore GX.

- Available Amazon Alexa Built-In<sup>7</sup>
- Available panoramic moonroof
- Available Sport Touring Package ups the ante with bold-on-bold style
- Buick Driver Confidence,<sup>4</sup> a standard suite of advanced safety and driver-assistance features that includes Automatic Emergency Braking



ENCLAVE



SEATS

7



EPA-ESTIMATED MPG—CITY/HWY (FWD)

18/26



MAX CARGO CU. FT.

97.6<sup>2</sup>

Welcome to your home away from home. With versatile cabin space, impressive available hauling capability and a host of modern amenities, Enclave is tomorrow's SUV for today's family.

- QuietTuning technology with Active Noise Cancellation to help reduce, block and absorb unwanted noise
- Available Sport Touring Package delivers a bold twist on signature style
- Enclave Avenir raises the standards of luxury with exclusive features
- Suite of available safety and driver-assistance technologies includes HD Surround Vision<sup>4</sup>



ENVISION



SEATS

5



EPA-ESTIMATED MPG—CITY/HWY (FWD)

24/31



MAX CARGO CU. FT.

52.7<sup>2</sup>

We welcome the opportunity to exceed your expectations. Schedule a test-drive and experience the performance and technology of the Buick Envision firsthand.

- Available Amazon Alexa Built-In<sup>7</sup>
- Wireless Android Auto<sup>8</sup> and wireless Apple CarPlay<sup>TM9</sup> compatibility
- Exclusive details throughout the First-Ever Envision Avenir
- Buick Driver Confidence Plus,<sup>4</sup> a standard suite of advanced safety and driver-assistance features that includes Lane Change Alert with Side Blind Zone Alert

We also invite you to explore our **"Shop. Click. Drive."** program at participating dealers for a way to shop even if you're unable to visit a participating dealer. Learn more at [buick.com/shop-click-drive](https://www.buick.com/shop-click-drive).



<sup>1</sup>Available AWD: EPA-estimated mpg 24 city/29 hwy. <sup>2</sup>With rear seats folded. Cargo and load capacity limited by weight and distribution. <sup>3</sup>Service varies with conditions and location. Requires active service plan and paid AT&T data plan. See [onstar.com](https://onstar.com) for details and limitations. <sup>4</sup>Read the vehicle Owner's Manual for important feature limitations and information. <sup>5</sup>With ECOTEC 1.2L Turbo engine. <sup>6</sup>With cargo area floor lowered and rear seats folded. Cargo and load capacity limited by weight and distribution. <sup>7</sup>Functionality is subject to limitations and varies by vehicle, infotainment system and location. Select service plan required. Certain Alexa Skills require account linking to use. Amazon, Alexa and all related marks are trademarks of Amazon.com, Inc., or its affiliates. See [onstar.com](https://onstar.com) for additional details. <sup>8</sup>Vehicle user interface is a product of Google and its terms and privacy statements apply. Requires the Android Auto app on Google Play and a compatible Android smartphone. Data plan rates apply. You can check which smartphones are compatible at [g.co/androidauto/requirements](https://g.co/androidauto/requirements). Android Auto is a trademark of Google LLC. <sup>9</sup>Vehicle user interface is a product of Apple<sup>®</sup> and its terms and privacy statements apply. Requires compatible iPhone<sup>®</sup> and data plan rates apply. Apple CarPlay is a trademark of Apple, Inc. Siri, iPhone and Apple Music are trademarks of Apple, Inc., registered in the U.S. and other countries.





Build your Envision today at  
**BUICK.COM**