

2020 BUICK

# REGAL



## **THE PERFECT BALANCE OF EVERYTHING THAT MATTERS**

Buick invites you to  
experience our newest lineup  
of innovative vehicles, each  
designed to enhance your life  
from the very first drive.

We've styled exteriors with  
sleek, modern lines.

We've filled interiors with  
inviting, premium materials.

Plus, we've engineered  
each vehicle with surprising  
roominess, power and  
technology so you can make  
more of every day.

Explore the 2020 Regal family  
and discover what it means to  
drive a vehicle built to enhance  
every moment of your life.



**REGAL HIGHLIGHTS**

Discreetly integrated rear sportback opening provides surprising cargo capability

Suite of available active safety technologies<sup>1</sup>

Regal GS matches V6 power to intelligent All-Wheel Drive with active twin clutch

Regal Sportback flexes its turbocharged performance with available intelligent All-Wheel Drive with active twin clutch

Regal Avenir masterfully blends style, substance and performance

<sup>1</sup>Read the vehicle Owner's Manual for important feature limitations and information.







## WHEN THE ROAD CALLS, HERE'S YOUR ANSWER

With its powerful 3.6L V6 and three Interactive Drive Control settings, Regal GS is a sport sedan that rewards far beyond the daily commute. It also looks the part of a performance machine thanks to exclusive 19" aluminum wheels and muscular sport styling. Even the discreetly integrated sportback opening is a high performer.

**310-HORSEPOWER 3.6L V6 ENGINE** The Regal GS is no stranger to the passing lane with the robust power and torque of a 3.6L 310-horsepower V6 engine and a 9-speed automatic transmission.

**INTELLIGENT ALL-WHEEL DRIVE** To help maximize traction, standard intelligent All-Wheel Drive with active twin clutch sends power to the wheel(s) with the most grip in slippery road conditions and helps enhance cornering and acceleration on dry roads.

**BREMBO® FRONT BRAKES** The elite stopping power that comes with the Regal GS is courtesy of the Brembo front brakes with dual-piston front calipers.



Regal GS shown in Sport Red with available features.





## CONTROL CONFIDENTLY WITHIN REACH

Everywhere you look, the GS interior is tailored for the true driving enthusiast. From the customizable performance cluster to an available Head-Up Display, you'll appreciate its suite of innovative features. The character of Regal GS is further defined by details like GS-exclusive sill plates with a matte-aluminum finish and trim on the doors and dash that gives the visual effect of carbon fiber.

**PERFORMANCE SEATS** The GS-exclusive racing-inspired front seats feature electronically adjustable side bolsters and a pull-out thigh-support bolster to help you customize your command of the cockpit. And with massaging, heated and ventilated front seats, you can refine your travels, no matter the tempo.

**RECONFIGURABLE PERFORMANCE CLUSTER** Customize your view of important vehicle information, such as speed, fuel economy and available Navigation,<sup>1</sup> with the 8" diagonal reconfigurable performance cluster.

**HEAD-UP DISPLAY** To help you stay focused on the road ahead, an available multicolor Head-Up Display projects key information onto the windshield, including readouts of the speedometer, tachometer, compass heading and available Forward Collision Alert<sup>2</sup> warnings.

<sup>1</sup>Map coverage available in the United States, Puerto Rico and Canada. <sup>2</sup>Read the vehicle Owner's Manual for important feature limitations and information.



Regal GS interior shown in Ebony with Ebony accents and available features.

## YOUR ALL-ACCESS PASS TO THE FAST LANE

Regal GS makes performance look easy, thanks to the clever engineering and thoughtful details that help it perform in ways that are equally intuitive and exhilarating.

**INTERACTIVE DRIVE CONTROL** Enhance the driving experience with the tap of a finger. With three Interactive Drive Control settings—Touring, Sport and GS—your vehicle's steering response, suspension and other driving dynamics can be adjusted based on road conditions, or your mood.

**FIVE-LINK REAR SUSPENSION** The five-link rear suspension balances agile handling with ride smoothness and quietness to help ensure excellent driving performance for you and your passengers.

**9-SPEED AUTOMATIC TRANSMISSION** The real fun comes the moment you hit the open road and discover the power and torque Regal GS delivers. To help make each drive seamless, Regal GS pairs its 310-horsepower engine with an advanced 9-speed automatic transmission. If you prefer more active engagement, you can manually shift through the gears, too.





## EXPRESSIVE STYLE MEETS UNEXPECTED VERSATILITY



### SPORTBACK OVERVIEW

With its stealthily integrated sportback opening, the 2020 Regal Sportback is a driver's car that blurs the lines between style and function. Add the multitude of configurations made possible by standard 60/40 or available 40/20/40 split-folding rear seats and you have what it takes to bring even more along for the ride.

**PERFORMANCE** On the open road and around corners, the Regal Sportback flexes its spirited performance with a 250-horsepower 2.0L turbocharged engine, advanced 9-speed transmission and available intelligent All-Wheel Drive with active twin clutch.

**SIGNATURE LIGHTING** Light the way in style with signature LED daytime running lamps, fog lamps and available advanced LED headlamps with auto-leveling technology. And with available eye-catching arrival sequence lights, you have a guiding light when approaching or exiting your Regal Sportback.

Regal Sportback Essence shown in Dark Moon Blue Metallic with available features.





## WE AIM TO PLEASE—CALL THIS A BULL’S-EYE

The Regal Sportback cabin is designed to keep you at ease and in control. An available heated, leather-wrapped steering wheel is expertly contoured to assist your command of the road. A premium feel from available features like ambient lighting and heated, leather-appointed front seats completes the experience.

**QUIETTUNING™ TECHNOLOGY** Buick QuietTuning technology with available Active Noise Cancellation uses many measures including triple door seals, laminated front side windows and windshield and other acoustic materials to help reduce, block and absorb unwelcome noise. ContiSilent™ tires, included with all 18" and 19" wheels, use sound-dampening foam to further help in hushing road noise.

**BOSE® PREMIUM AUDIO** The available eight-speaker Bose premium audio system is custom engineered for the specific interior acoustics of the Regal Sportback and delivers clean, crisp audio throughout the cabin.

**IN-VEHICLE AIR IONIZER** The available in-vehicle air ionizer is designed to help keep the air in your cabin fresher.





## REGAL AVENIR: CRAFTED TO A HIGHER STANDARD

Uncommonly rewarding. That is what you can expect from Avenir—the highest expression of Buick luxury. Regal Avenir masterfully blends turbocharged performance with elevated styling. From its exclusive mesh grille with Black Ice finish to 19" aluminum wheels with Pearl Nickel finish, this is a sport sedan that outperforms even at a standstill. Step inside and you'll find a cabin that delivers at the highest levels of refinement. Thanks to Regal Avenir's exclusive details, its hold on the road is nothing compared with the hold it will have on you.

Regal Avenir shown in Satin Steel Metallic with available features.



Regal Avenir interior shown in Ebony with Ebony accents.

## THE HIGHEST EXPRESSION OF BUICK LUXURY

**QUILT-STITCHED SEATING** Exclusive quilt-stitched leather-appointed seating adds distinctive texture to the Regal Avenir interior and emphasizes its sporty, sophisticated style. The seating is available in two colors: Ebony and exclusive Whisper Beige.

**INNOVATIVE TECHNOLOGIES** Regal Avenir comes standard with wireless smartphone charging,<sup>1</sup> built-in Navigation<sup>2</sup> and a Bose premium eight-speaker audio system to help you make the most of every drive.

**EXCLUSIVE WHEELS** Unique 19" aluminum wheels complement Regal Avenir's dynamic shape and are finished in Pearl Nickel for added visual emphasis.

**AVENIR GRILLE** With its intricate texture, Black Ice finish and mesh background featuring Buick's signature tri-shield insignia, the exclusive Avenir grille makes a confident statement wherever it goes.



<sup>1</sup>The system wirelessly charges one compatible mobile device. Some phones have built-in wireless charging technology and others require a special adapter/back cover. To check for phone or other device compatibility, see [my.buick.com/learn](http://my.buick.com/learn) or consult your carrier. <sup>2</sup>Map coverage available in the United States, Puerto Rico and Canada.



## A PRIORITY OF SAFETY

**PERCEIVE** To help make you more aware of your surroundings, Regal empowers you with available technologies that help raise your awareness of the road around you.

**PREVENT** When certain hazards are detected, available features on your Buick Regal can trigger alerts to let you know. Some features offered can even automatically apply emergency braking or gently nudge the steering wheel to help you avoid crashes or reduce their severity in some situations.

**PROTECT** In the event of a crash, strong structural dynamics, intelligent airbag systems<sup>1</sup> and other advanced safety systems work in concert to help protect you and your passengers.

### AVAILABLE DRIVER-ASSISTANCE AND SAFETY TECHNOLOGIES

Lane Keep Assist with Lane Departure Warning • Lane Change Alert with Side Blind Zone Alert • Rear Cross Traffic Alert • Forward Collision Alert • Enhanced Automatic Emergency Braking • Teen Driver • Adaptive Cruise Control–Advanced

For a detailed look at the active safety technologies available in the 2020 Regal, please visit [buick.com/regal/safety](https://buick.com/regal/safety).

<sup>1</sup>A NOTE ON CHILD SAFETY: Always use seat belts and the correct child restraint for your child's age and size, even with airbags. Even in vehicles equipped with the Passenger Sensing System, children are safer when properly secured in a rear seat in the appropriate infant, child or booster seat. Never place a rear-facing infant restraint in the front seat of any vehicle equipped with an active frontal airbag. See your vehicle Owner's Manual and child safety seat instructions for more safety information.



Safety or driver-assistance features are no substitute for the driver's responsibility to operate the vehicle in a safe manner. The driver should remain attentive to traffic, surroundings and road conditions at all times. Visibility, weather and road conditions may affect feature performance. Read the vehicle Owner's Manual for more important feature limitations and information.

[buick.com/regal/safety](https://buick.com/regal/safety)



## GIVING CONNECTIVITY A STARRING ROLE

**BUICK CONNECTED SERVICES** Your new Buick comes with a host of in-vehicle benefits. Connected Access<sup>1</sup> offers the latest technology to help you improve every drive—and you get standard connectivity for 10 years, giving you access to features like monthly diagnostic emails and the ability to order takeout food and purchase fuel through your vehicle's in-dash infotainment system. You can also take your ownership experience to new levels by upgrading to other Buick Connected Services.

**myBUICK MOBILE APP<sup>2</sup>** When you download the available myBuick mobile app, you can have access to features like scheduling service, getting tips to help improve your driving, instant offers from select nearby merchants and other ways to simplify your ownership experience. When you upgrade to Remote Access,<sup>2</sup> remotely start and stop your vehicle, check fuel levels and even set and share notifications for vehicle arrivals and departures.<sup>3</sup>

**BUILT-IN WI-FI® HOTSPOT<sup>4</sup>** A built-in Wi-Fi® Hotspot with available 4G LTE data supports up to seven devices from up to 50 feet away from the vehicle. So your passengers can use their

favorite apps to stream movies, watch TV, play games, listen to music and check social media on the go.

**APPLE CARPLAY™ COMPATIBILITY<sup>5</sup>** Just plug in your compatible iPhone® and you'll have easy access to your contacts, maps and some of the apps that you're familiar with on your vehicle's available 8" diagonal color touch-screen. You can also have Siri® send and read your text messages, and you can listen to all of your content from Apple Music™ and other compatible audio apps.

**ANDROID AUTO™ COMPATIBILITY<sup>6</sup>** Android Auto makes it easy to use the touch-screen display in your Regal to access your phone, texts and music. And with Google Maps,™ you can get voice-guided navigation, live traffic information, lane guidance and more while keeping your hands on the wheel and your eyes on the road.

**WIRELESS CHARGING<sup>7</sup>** Cut the cord with the help of available wireless smartphone charging. Just place your compatible device in the center console slot and charge with ease.

<sup>1</sup>Standard connectivity available only to original purchaser for 10 years. See onstar.com for details and further plan limitations. Does not include safety services. Connected Access services are subject to change. <sup>2</sup>Requires compatible Apple® or Android™ device and data connection. Remote services require paid plan and do not include emergency or security services. Remote start requires GM factory-installed and enabled remote-start system. <sup>3</sup>Requires select paid plan and compatible smartphone. Locates compatible connected vehicles. Text and data rates apply. Requires contact method on file and enrollment to receive alerts. <sup>4</sup>Service varies with conditions and location. Requires active service plan and paid AT&T® data plan. See onstar.com for details and limitations. Vehicle must be on or in accessory position for Wi-Fi® to function. <sup>5</sup>Vehicle user interface is a product of Apple® and its terms and privacy statements apply. Requires compatible iPhone® and data plan rates apply. Apple CarPlay is a trademark of Apple, Inc. Siri, iPhone and Apple Music are trademarks of Apple, Inc., registered in the U.S. and other countries. <sup>6</sup>Vehicle user interface is a product of Google™ and its terms and privacy statements apply. Requires the Android Auto app on Google Play and an Android-compatible smartphone running Android 5.0 or higher. Data plan rates apply. Google and Android Auto are trademarks of Google LLC. <sup>7</sup>The system wirelessly charges one compatible mobile device. Some phones have built-in wireless charging technology and others require a special adapter/back cover. To check for phone or other device compatibility, see my.buick.com/learn or consult your carrier.





## ONSTAR SAFETY AND SECURITY

**DESIGNED FOR ADDED PEACE OF MIND** As you travel with the ones you care about most, OnStar® is available to help empower every moment. With the OnStar Safety and Security Plan,<sup>1</sup> you can have a 24/7 lifeline to specially trained Advisors ready to help if you've been in a crash, your vehicle's been stolen,<sup>2</sup> you're lost or you need Roadside Assistance.<sup>3</sup>

**EMERGENCY HELP WHEN IT MATTERS MOST** If you are in a detected crash, available Automatic Crash Response<sup>4</sup> can use your vehicle's built-in sensors to alert an Emergency-Certified Advisor<sup>5</sup> who can send for help, even if you can't ask for it. Using Injury Severity Prediction technology, these specially trained Advisors can provide first responders with critical information, including the likelihood of serious injury. You can feel confident knowing OnStar Advisors are ready to help, 24/7.

**SECURITY YOU CAN TRUST** If your vehicle is stolen, OnStar Advisors can help with available Stolen Vehicle Assistance.<sup>2</sup> They can pinpoint your vehicle's location, prevent it from restarting and work with the police to help recover it. They can even slow it down if authorities deem conditions are appropriate. Plus, with Theft Alarm Notification,<sup>2</sup> you'll be alerted via text, email and/or a phone call if your vehicle alarm sounds.

<sup>1</sup>OnStar plan, working electrical system, cell reception and GPS signal required. OnStar links to emergency services. See onstar.com for details and limitations. <sup>2</sup>Requires armed GM factory-installed theft-deterrent system and enrollment to receive alerts. Additional texting and data rates apply. Doesn't prevent theft, damage or loss. <sup>3</sup>Roadside services provided by Allstate Roadside Services. <sup>4</sup>Not all vehicles may transmit all crash data. <sup>5</sup>OnStar Emergency Advisors are certified by the International Academies of Emergency Dispatch.



FEATURES					
● STANDARD   ○ AVAILABLE   — NOT AVAILABLE	REGAL (1SV)	PREFERRED	ESSENCE	AVENIR	GS
2.0L TURBO 4-CYLINDER	●	●	●	●	—
3.6L V6 DI DOHC WITH VVT	—	—	—	—	●
FRONT-WHEEL DRIVE	●	●	●	●	—
INTELLIGENT ALL-WHEEL DRIVE WITH ACTIVE TWIN CLUTCH	—	—	○	—	●
KEYLESS OPEN AND START	●	●	●	●	●
60/40 SPLIT-FOLDING REAR SEAT	●	●	—	—	—
40/20/40 SPLIT-FOLDING REAR SEAT	—	—	●	●	●
BLUETOOTH® TECHNOLOGY¹	●	●	●	●	●
HALOGEN HEADLAMPS WITH LED SIGNATURE LIGHTING DAYTIME RUNNING LAMPS	●	●	●	—	●
QUIETTUNING™ TECHNOLOGY	●	●	●	●	●
REAR VISION CAMERA²	●	●	●	●	●
STABILITRAK AND TRACTION CONTROL	●	●	●	●	●
LEATHER-WRAPPED STEERING WHEEL	—	●	●	●	●
8-WAY POWER DRIVER SEAT WITH 2-WAY POWER LUMBAR (Includes 4-way power lumbar on GS and Avenir)	—	●	●	●	●
ACTIVE NOISE CANCELLATION	—	—	○³	—	●
BUICK INFOTAINMENT SYSTEM⁴ WITH 8" DIAGONAL COLOR TOUCH-SCREEN	—	○⁵	●	●	●
COLOR 4.2" DIAGONAL DRIVER INFORMATION CENTER (8" on GS)	—	○⁵	●	●	●
REMOTE START	—	○⁵	●	●	●
FOG LAMPS	—	—	●	●	—
HEATED LEATHER-WRAPPED STEERING WHEEL	—	—	●	●	●
MOON WHITE INTERIOR AMBIENT LIGHTING	—	—	●	●	●
LEATHER-APPOINTED SEATS	—	—	●	●	●
HEATED FRONT SEATS	—	—	●	●	●
8-WAY POWER FRONT-PASSENGER SEAT WITH 2-WAY POWER LUMBAR (Includes 4-way power lumbar on GS and Avenir)	—	—	●	●	●
LANE CHANGE ALERT WITH SIDE BLIND ZONE ALERT²	—	○	○	●	●
LED HEADLAMPS WITH LED SIGNATURE LIGHTING DAYTIME RUNNING LAMPS	—	○	○	●	○
BOSE® PREMIUM 8-SPEAKER AUDIO SYSTEM	—	○⁵	○⁵	●	○⁵
REAR CROSS TRAFFIC ALERT²	—	○	○	●	●
POWER MOONROOF	—	○	○	○	○

FEATURES AND SPECIFICATIONS

AVENIR EXCLUSIVE	
Includes Ebony or Whisper Beige quilt-stitched, leather-appointed seating; distinctive Black Ice mesh grille; Avenir-embossed front sill plates; and 19" aluminum wheels with Pearl Nickel finish	
GS EXCLUSIVE	
Includes heated, ventilated front bucket seats with massage, integrated head restraints and power-adjustable bolsters, 19" aluminum wheels with Technical Gray accents, Brembo® front brakes, rear decklid spoiler, front hood scoops, ground effects, pass-through exhaust and Front and Rear Park Assist²	
PACKAGES	
Sights and Sounds Package (Available on Preferred, Essence and GS. Standard on Avenir.)	Includes Navigation,⁶ Bose 8-speaker premium audio, HD Radio and for Preferred adds remote start and color Driver Information Center
Preferred Driver Confidence Package (Available on Preferred)	Includes Lane Change Alert with Side Blind Zone Alert;² Rear Park Assist;² Rear Cross Traffic Alert;² LED headlamps with auto leveling, cornering lamps and 18" aluminum wheels
Essence Driver Confidence Package (Available on Essence. Standard on Avenir.)	Includes Memory Package; driver and front-passenger 4-way power lumbar seat adjuster and exterior heated, power-adjustable, driver-side auto-dimming mirrors; LED headlamps with auto leveling and cornering lamps; Rear Park Assist;² Rear Cross Traffic Alert;² Lane Change Alert with Side Blind Zone Alert;² and wireless smartphone charging⁷
Driver Confidence Package II² (Available on Essence and Avenir)	Includes all features from Essence and Avenir above plus Adaptive Cruise Control–Advanced, Following Distance Indicator, Forward Collision Alert, Enhanced Automatic Emergency Braking, Lane Keep Assist with Lane Departure Warning and Front Pedestrian Braking
GS Driver Confidence Package² (Available on GS)	Includes Adaptive Cruise Control–Advanced, Following Distance Indicator, Forward Collision Alert, Enhanced Automatic Emergency Braking, Lane Keep Assist with Lane Departure Warning, Front Pedestrian Braking and Head-Up Display
Appearance Package (Available on GS)	Includes wireless smartphone charging,⁷ LED headlamps with auto leveling and cornering lamps

DIMENSIONS (INCHES)		CAPACITIES	
Wheelbase	111.4	Standard engine on Regal Sportback, Avenir	
Overall length	192.9	Standard engine on Regal GS	
Body width	73.3	Engine Type	2.0L 4-cylinder Turbo SIDI with VVT
Overall height	57.3	Horsepower	250 hp @ 5400 rpm
Track width, front/rear	62.8/63.0	Torque	260 lb-ft @ 2000-5200 rpm (FWD) 295 lb-ft @ 3000-4000 rpm (AWD) <sup>8</sup>
Head room, first/second row	38.8/37.4	EPA-estimated mpg	22 city/32 hwy (FWD) 21 city/29 hwy (AWD) <sup>8</sup>
Shoulder room, first/second row	56.9/55.4	Fuel Tank (approx.)	16.5 gallons
Hip room, first/second row	55.2/54.1	Cargo Capacity <sup>9</sup>	With rear seats up: 31.5 cu. ft. With rear seats down: 60.7 cu. ft.
Leg room, first/second row	42.1/36.9		

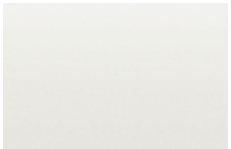
¹Go to my.buick.com/learnabout/bluetooth to find out which phones are compatible with the vehicle. Full Bluetooth feature functionality varies by device, model and software version.    ²Read the vehicle Owner's Manual for important feature limitations and information.    ³Standard with AWD.    ⁴Functionality varies by model. Full functionality requires compatible Bluetooth and smartphone, and USB connectivity for some devices.    ⁵Requires Sights and Sounds Package.    ⁶Map coverage available in the United States, Puerto Rico and Canada.    ⁷The system wirelessly charges one compatible mobile device. Some phones have built-in wireless charging technology and others require a special adapter/back cover. To check for phone or other device compatibility, see my.buick.com/learn or consult your carrier.    ⁸Not available on Avenir.    ⁹Cargo and load capacity limited by weight and distribution.



COLOR PALETTE

EXTERIOR COLORS

Exterior colors are subject to change. Visit [buick.com](http://buick.com) for current availability.



Summit White<sup>1</sup>



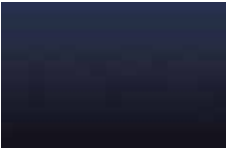
Satin Steel Metallic<sup>2</sup>



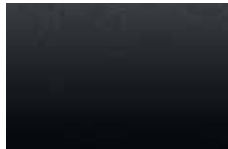
Rioja Red Metallic<sup>3</sup>



Sport Red<sup>4</sup>



Dark Moon Blue Metallic<sup>3</sup>



Ebony Twilight Metallic<sup>5</sup>



White Frost Tricoat<sup>6</sup>

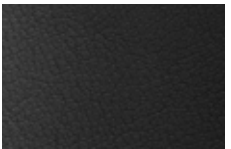


Quicksilver Metallic<sup>7</sup>

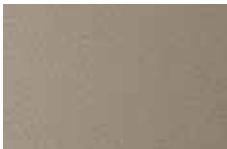
<sup>1</sup>Not available on Avenir or GS models.    <sup>2</sup>Additional charge; premium paint. No charge on Avenir. Not available on Regal (1SV).  
<sup>3</sup>Additional charge; premium paint. No charge on Avenir. Not available on Regal (1SV) or GS models.    <sup>4</sup>Available on GS model only.  
<sup>5</sup>Additional charge; premium paint. No charge on Avenir.    <sup>6</sup>Additional charge; premium paint. Not available on Regal (1SV).  
<sup>7</sup>Additional charge; premium paint. Not available on Avenir.

INTERIOR COLORS

Ebony accents included with all interior colors.



Ebony Cloth<sup>8</sup> or Leather-Appointed Seating<sup>9</sup>



Shale Cloth<sup>10</sup> or Leather-Appointed Seating<sup>9</sup>



Ebony Perforated Quilt-Stitched Leather-Appointed Seating<sup>11</sup>



Whisper Beige Perforated Quilt-Stitched Leather-Appointed Seating<sup>11</sup>



Ebony Perforated Leather-Appointed Seating<sup>12</sup>

<sup>8</sup>Not available on Regal (1SV). Available on Preferred.  
<sup>9</sup>Available on Essence.  
<sup>10</sup>Standard on Regal (1SV). Available on Preferred.  
<sup>11</sup>Available on Avenir.  
<sup>12</sup>Exclusive to GS.

WHEELS

- A** 17" 5-Spoke Aluminum  
Standard on Regal (1SV) and Preferred.
- B** 18" 5-Spoke Dynamic Aluminum  
Available on Preferred with Driver Confidence Package.
- C** 19" Aluminum With Pearl Nickel Finish  
Exclusive to Avenir.

- D** 19" Aluminum With Technical Gray Accents  
Exclusive to Regal GS.
- E** 18" Machine-Faced Aluminum With Painted Pockets  
Standard on Essence.



We have tried to make this catalog comprehensive and factual. We reserve the right, however, to make changes at any time, without notice, in prices, colors, materials, equipment, specifications, models and availability. Specifications, dimensions, measurements, ratings and other numbers in this catalog and other printed materials provided at the dealership or affixed to vehicles are approximations based on design and engineering drawings, prototypes and laboratory tests. Your vehicle may differ due to variations in manufacture and equipment. Since some information may have been updated since the time of printing, please check with your Buick dealer for complete details. Buick reserves the right to lengthen or shorten the model year for any product for any reason, or to start and end model years at different times. Certain vehicle features may lose their usefulness over time due to obsolescence from technological changes. Unless otherwise noted, all claims based on GM Mid-Car segment and latest available competitive information. Excludes other GM vehicles.

**3-YEAR/36,000-MILE BUMPER-TO-BUMPER LIMITED WARRANTY** Buick will warrant each 2020 Regal from bumper to bumper for 3 years/36,000 miles (whichever comes first; see dealer for details), with no deductible, from the original in-service date of the vehicle, for warrantable repairs that are required as a result of defects due to materials and/or workmanship. Cosmetic corrosion resulting from defects is also covered under the Bumper-to-Bumper Limited Warranty. In addition, rust-through corrosion will be covered for 6 years/100,000 miles (whichever comes first; see dealer for details).

**POWERTRAIN LIMITED WARRANTY** Every 2020 Buick Regal comes with a 5-year/60,000-mile (whichever comes first) transferable Powertrain Limited Warranty. 24/7 Roadside Assistance and Courtesy Transportation are also offered for the duration of the Powertrain Limited Warranty. Please see your Buick dealer for details.

**AN IMPORTANT NOTE ABOUT ALTERATIONS AND WARRANTIES** Installations or alterations to the original equipment vehicle (or chassis) as distributed by General Motors are not covered by the General Motors New Vehicle Limited Warranty. The special body company, assembler, equipment installer or upfitter is solely responsible for warranties on the body or equipment and any alterations (or any effect of the alterations) to any of the parts, components, systems or assemblies installed by GM. General Motors is not responsible for the safety or quality of design features, materials or workmanship of any alterations by such suppliers.

**ASSEMBLY** Buick vehicles and their components are assembled or produced by different operating units of General Motors, its subsidiaries or suppliers to GM worldwide. We sometimes find it necessary to produce Buick vehicles with different or differently sourced components than originally scheduled. Since some options may be unavailable when your vehicle is assembled, we suggest that you verify that your vehicle includes the equipment you ordered or, if there are changes, that they are acceptable to you.

IMPORTANT WORDS

**ENGINES** Buick products are equipped with engines produced by GM Powertrain or other suppliers to GM worldwide. The engines in Buick products may also be used in other GM makes and models.

**TRAILERING AND OFF-ROAD DRIVING INFORMATION** Please go to [buick.com](http://buick.com) and carefully review the vehicle Owner's Manual for important safety information about trailering or off-road driving in your vehicle.

**ONSTAR AND BUICK CONNECTED SERVICES** Connected vehicle services vary by vehicle model and require working electrical system, cell reception and GPS signal. Requires active service plan. OnStar links to emergency services. See [onstar.com](http://onstar.com) for details and limitations.

**A NOTE ON CHILD SAFETY** Always use seat belts and the correct child restraint for your child's age and size, even with airbags. Even in vehicles equipped with the Passenger Sensing System, children are safer when properly secured in a rear seat in the appropriate infant, child or booster seat. Never place a rear-facing infant restraint in the front seat of any vehicle equipped with an active frontal airbag. See your vehicle Owner's Manual and child safety seat instructions for more safety information.

**FLEET ORDERS** Some standard content may be deleted with fleet orders. See dealer for details.

**GMMOBILITY.COM (1-800-323-9935)** GM Mobility offers financial assistance for eligible adaptive equipment to make automotive travel easier for persons with disabilities or special transportation needs. To learn more about special GM Mobility offers, visit [gmmobility.com](http://gmmobility.com).

GM, the GM logo, Buick, the Buick emblem, OnStar, the OnStar emblem and the slogans, emblems, vehicle model names, vehicle body designs and other marks appearing in this catalog are the trademarks and/or service marks of General Motors, its subsidiaries, affiliates or licensors. The Facebook logo is a trademark of Facebook, Inc. The Twitter logo is a trademark of Twitter, Inc. Android, Android Auto, Google Play, YouTube and other marks are trademarks of Google LLC. Apple CarPlay, Siri, iPhone and Apple Music are trademarks of Apple, Inc. The Instagram logo is a trademark of Instagram, Inc. ©2019 General Motors. All rights reserved.

**To learn more about why Certified Service is the perfect companion for your Regal, visit [mycertifiedservice.com](http://mycertifiedservice.com).**

