

1992 BUICK





WHY SHOULD I CONSIDER A NEW BUICK?

A good many features separate Buick from a lot of shiny metal blurring the highways, but two words go a long way toward answering your question...Buick quality.

It is in the distinctive design. Mature, not faddish. It is in the built-in safety. It is found in the seamless flow of power, the seating material, the road feel. It is evident in the clarity of information from gauge to eye, the comfortable proximity of controls and the right detail throughout.

The re-engineering of Buick over the last four years started with a world-class quality mandate and blank paper. Goals were not only achieved, but exceeded.

Buick quality is deep and lasting; it is the very essence and soul of Buick.

It is why, if you are looking at a Buick, you are looking at the best Buick ever made.

For all these reasons and more, we invite you to consider a new Buick...the new symbol for quality.

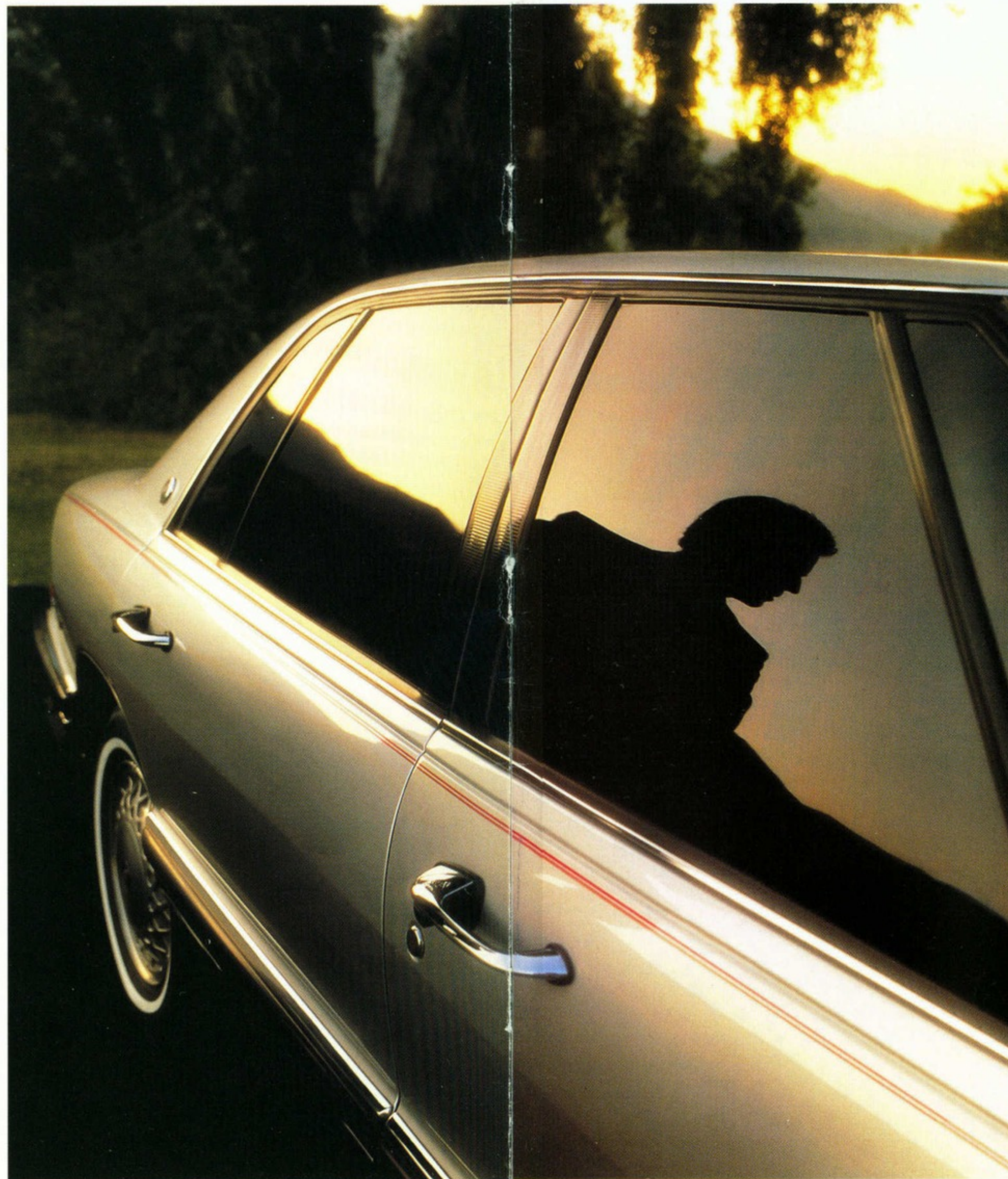


TABLE OF CONTENTS

Park Avenue.....	4
Riviera.....	12
Regal.....	18
LeSabre.....	28
Skylark.....	36
Century.....	44
Roadmaster.....	50
New GM TOTAL™ Warranty and Additional Information.....	58



PARK AVENUE ULTRA

Ultra: it means superiority.

Twenty-eight teams of "total-vehicle focus" designers and engineers made sure the word superiority lost nothing in the translation when applied to this premium 6-passenger Buick. Park Avenue Ultra features as standard the new, more powerful, supercharged 3800 V6 engine with electronically controlled 4-speed automatic transmission with overdrive, for precise shifting and a seamless flow of power.

Park Avenue Ultra...the automobile "*MotorWeek*" (a weekly automotive-review television show) recently named winner of its ninth annual "Driver's Choice" Award as the Best Luxury Car in 1991.

There's no mistaking the muscular grace of a Park Avenue as it glides quietly past...



▲ 205 HP, computer-controlled, supercharged 3800 V6 with new torque axis engine mounts for improved isolation, smoother feel. This engine will give you authoritative power, high torque for more aggressive driving, and effortless cruising at highway speeds.

◀ Park Avenue Ultra shown with available Gran Touring suspension package - for additional directional control, steering response and cornering ability. Includes 16" specific wheels and blackwall tires.



PARK AVENUE ULTRA



Extraordinarily well-built, Park Avenue Ultra's one-piece inner body sides and solid construction add to the overall feeling of solidity. Every body panel, except the roof, is made of galvanized steel on both sides. Polymer composite front fenders are impervious to corrosion and resist dings and dents.

Park Avenue's solid internal safety cage helps keep crushed and buckling vehicle components outside the

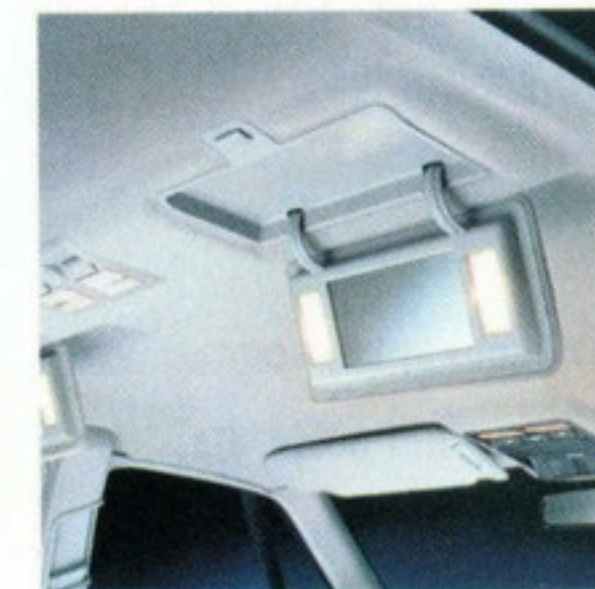
passenger compartment in the chance of a severe impact.

Special security measures operate both on the road and in the parking garage. Anti-lock brakes provide an added measure of security on a wide variety of driving surfaces. Sensors in Park Avenue's "personalized" PASS-Key ignition key must correspond to the starter relay or the engine will not start, helping you to

avoid theft.

Dual automatic ComforTemp Climate Control allows driver- and front-seat passenger to maintain up to a 3°C/5°F temperature difference. The boulevard-smooth DynaRide 4-wheel independent suspension is enhanced by fully supportive power-controlled driver- and front-passenger seats with smooth-to-the-touch leather in the seating areas.

Park Avenue Ultra: the result of North American know-how at its best.



◀ Park Avenue Ultra amenities are evident with these dual swing-down lighted vanity mirrors for the rear compartment.

▼ Park Avenue Ultra interior with Standard leather seating areas and driver's programmable memory seat and outside rearview mirrors.





PARK AVENUE



The muscular elegance of Park Avenue's smooth rounded body surfaces, flush glass and optimized design rearview mirrors help reduce wind noise. Its looks are refined and smooth; so is the transfer of power to the road. With 170 HP the 3800 V6 is powerful, yet efficient. Automatic rear level control – designed to keep the rear of the vehicle at the proper

height, even with varying load conditions – and a substantial wheelbase, are part of a suspension system designed to keep every wheel firmly planted on the road.

The design philosophy behind this 1992 Park Avenue included a close look at 400 features of competitive luxury automobiles, with the goal of achieving “equal or better” quality engineering on all counts.



◀ Front-seat passengers are able to tailor temperatures to their individual preference within a range of 3°C/5°F. Rear passengers now benefit from a rear-seat ComforTemp heating and cooling distribution system – standard on Ultra, available Park Avenue.

▼ Park Avenue Sedan



FEATURES AND OPTIONS

PARK AVENUE & PARK AVENUE ULTRA

MODEL AVAILABILITY

Park Avenue

Park Avenue Ultra

Sedan

■

■

STANDARD AND AVAILABLE EQUIPMENT

PARK AVENUE ▼ ULTRA ▼

Air bag – driver-side Supplemental Inflatable Restraint (SIR) system	S	S
Air conditioning – automatic dual ComforTemp Climate Control	S	S
Air ducts – rear-seat ComforTemp, heating and cooling	A	S
Antenna – automatic, power	S	S
Armrest – front-seat, centre-folding with storage	S	S
Armrest – rear-seat, centre-folding	S	S
Brake/transmission shift interlock	S	S
Carpet savers – front and rear	S	S
Console – overhead	S	S
Convenience net, in-trunk	S	S
Cornering lamps	A	S
Cruise control – electronic	S	S
Defogger – electric rear-window	S	S
Door edge guards – body-colour	S	S
Door locks – electric	S	S
Door locks – automatic, electric	A	S
Exhaust system – stainless steel	S	S
Fuel filler door release – electric remote	S	S
Glass – EZ-Kool™ solar control, tinted	S	S
Headlamp control – Daytime Running Lamps with Twilight Sentinel	S	S
Illuminated entry system – includes retained accessory power	S	S
Indicators – low fluid levels and door ajar	S	S
Instrumentation – analogue cluster with tachometer	S	S
Keyless entry – remote control	A	S
Lamp monitors – front and rear	A	S
Lights – front- and rear-seat reading, courtesy and door warning	S	S
Lights – trunk, engine compartment and instrument panel courtesy	S	S
Locks – rear-door child-security latches	S	S
Mirrors – outside, electric, left and right remote	S	S
Mirror – outside, driver heated and automatic day/night system	A	S
Mirror – lighted visor vanity, driver	A	S
Mirror – lighted visor vanity, passenger	S	S
Mirrors – lighted visor vanity, rear-seat passengers	S	S
Mirror – inside rearview, automatic day/night system, electrochromic	A	S
Paint – lower body accent colour	S	S
Radio – ETR AM/FM stereo with cassette tape player and 4-speaker system	S	S
Radio – ETR AM stereo/FM stereo with cassette tape player, graphic equalizer and 6-speaker Concert Sound II	A	S
Seats – cloth, 55/45 divided front with seatback pockets	S	S
Seats – Sierra leather seating areas, 55/45 divided front with seatback pockets	A	S
Seats – 6-way power, driver and passenger	S	S
Seat – 2-position memory driver seat and outside mirrors	A	S
Seat recliner – manual driver; power passenger	S	S
Seat recliner – power driver and passenger	S	S
Shoulder belts, front seat height adjuster	S	S
Steering column – Tilt-Wheel™	S	S
Steering wheel – leather-wrapped	A	S
Theft-deterrent system – PASS-Key	S	S
Theft-deterrent system – alarm with starter-interrupt	A	S
Trunk mat	A	S
Trunk release – electric with lockout feature	S	S
Trunk release – electric, remote control with pull-down feature	A	S
Windows – power with driver “express-down” feature	S	S
Windshield wipers – 2-speed with low-speed delay feature	S	S



PREFERRED EQUIPMENT GROUPS:

To help simplify the buying process, the 1992 Park Avenue has optional Preferred Equipment Groups. (P.E.G.'s). Choose the equipment group you desire, then select from the accompanying list of individual options. Some restrictions apply. See your sales representative for details.

MODELS

P.E.G. ORDERING CODE

	PARK AVENUE	ULTRA
Cornering lamps	•	•
Door locks – automatic, electric	•	•
Horn – four note	•	•
Keyless entry – remote control	•	•
Lamp monitors – front and rear	•	•
Mirror – inside rearview, automatic day/night system, electrochromic	•	•
Mirror – lighted visor vanity, driver	•	•
Theft-deterrent system – alarm with starter-interrupt	•	•
Trunk release – electric, remote control with pull-down feature	•	•
Air conditioning – rear-seat ComforTemp, heating and cooling	•	•
Mirror – outside, driver heated and automatic day/night system	•	•
Radio – ETR AM stereo/FM stereo with cassette tape player, graphic equalizer and 6-speaker Concert Sound II	•	•
Seat – 2 position memory driver seat and outside mirrors	•	•
Tires – P205/70R-15 steel-belted, all-season, self-sealing whitewall	•	•
Trunk mat	•	•

INDIVIDUAL OPTIONS:

The following individual options may be ordered. Some restrictions apply. See your sales representative for details.

Astroroo™ – electric sliding
ElectriClear heated windshield
Gran Touring suspension package ²
Paint – Firemist (Park Avenue)
Paint – monotone (Ultra)
Radio – ETR AM stereo/FM stereo with cassette tape player, graphic equalizer and 6-speaker Concert Sound II (Park Avenue)
Radio – ETR AM stereo/FM stereo with compact disc player, graphic equalizer and 6-speaker Concert Sound II
Radio – Delco/Bose Gold Series System with ETR AM stereo/ FM stereo with cassette tape player and Bose 4-speaker system (Ultra)
Seats – Sierra leather seating areas includes leather-wrapped steering wheel (Park Avenue)
Tires – P205/70R-15 steel-belted, all-season, self-sealing whitewall (Park Avenue)
Traction control ³
Trailer Towing Package – 1361 kg/3,000 lb. capacity

S – Standard equipment

A – Available equipment

• Included in Preferred Equipment Group

¹ Deletes lamp monitors. Deletes rear vanity mirrors on Ultra. Reduces head room slightly.

² Deletes self-sealing tires

³ Interim availability. See your dealer for details.



▲ An automatic dimming day/night inside rearview mirror is designed to reduce glare. (Standard on Ultra).



▲ Available new traction control system* helps minimize wheel spin and maximize control on slippery surfaces...especially during low speed acceleration.



▲ Park Avenue's impressive interior shown here in the available Sierra ultra soft leather seating areas. Equally impressive is a trunk of 575L/ 20.3 cu.ft., with a completely flat floor.

POWERTRAIN & CHASSIS/DIMENSIONS

POWERTRAIN & CHASSIS

Engines –	
Model, type; Park (available Ultra)	3.8L 3800 SFI V6
Horsepower	170 @ 4800 RPM
Torque – lb./ft.	220 @ 2800 RPM
Fuel management	sequential tuned-port fuel injection (SFI)
Model, type; Ultra	3.8L 3800 Supercharged SFI V6
Horsepower	205 @ 4400 RPM
Torque – lb./ft.	260 @ 3200 RPM
Fuel management	sequential tuned-port fuel injection (SFI)
Transmission;	4-speed automatic with overdrive – electronically controlled
Steering; Park Avenue	power, rack-and-pinion
Ultra	power, variable-effort rack-and-pinion
Brakes;	power, front disc/rear drum with anti-lock system (ABS)
Suspension;	DynaRide, 4-wheel independent with automatic rear level control
Tires; Park Avenue	P205/70R-15 steel-belted, all-season whitewall
Ultra (available Park Avenue)	P215/70R-15 steel-belted, all-season, self-sealing whitewall
Wheels; Park Avenue	15" x 6", specific aluminum
Ultra	15" x 6", specific colour-keyed aluminum

*Interim availability. See your dealer for details.



▲ Park Avenue Ultra's easy-to-read instrument panel surrounds you with back-lit analogue gauges, well-placed switches and an easy-to-grip leather-wrapped steering wheel containing an air bag. New variable-effort steering provides variable power assist adjusted to vehicle speed.

DIMENSIONS mm (in.)

Exterior	
Length	5215 (205.3)
Width	1903 (74.9)
Height	1415 (55.7)
Wheelbase	2814 (110.8)
Front tread	1537 (60.5)
Rear tread	1529 (60.2)
Interior, front/rear	
Leg room	1068/1057 (42.0/41.6)
Head room	986/963 (38.8/37.9)
Shoulder room	1501/1495 (59.1/58.9)
Hip room	1400/1379 (55.1/54.3)
Capacity	
Passenger	6
Trunk, L (cu.ft.)	575 (20.3)
Fuel tank, L (gal.)	68 (15.0)
Curb weight, kg (lb.)	
Park Avenue	1624 (3,580)
Ultra	1661 (3,662)

EXTERIOR COLOURS

40 – Arctic White ¹	72 – Ruby Red Metallic ²	76 – Claret Red Metallic
57 – Champagne Beige Metallic ¹	56 – Alabaster Beige ²	69 – Dark Mahogany Metallic
18 – Dark Jadestone Metallic ²	22 – Ice Blue Metallic ²	83 – Sapphire Blue Firemist ^{1,2}
28 – Midnight Blue Metallic	13 – Sterling Silver Metallic ¹	85 – Gunmetal Gray Metallic ¹
41 – Black ¹		

¹Monotone paint colours available on Ultra.

²Not available on Ultra.

³Extra cost colour.

NOTE: See your sales representative for available interior trim colour selection.

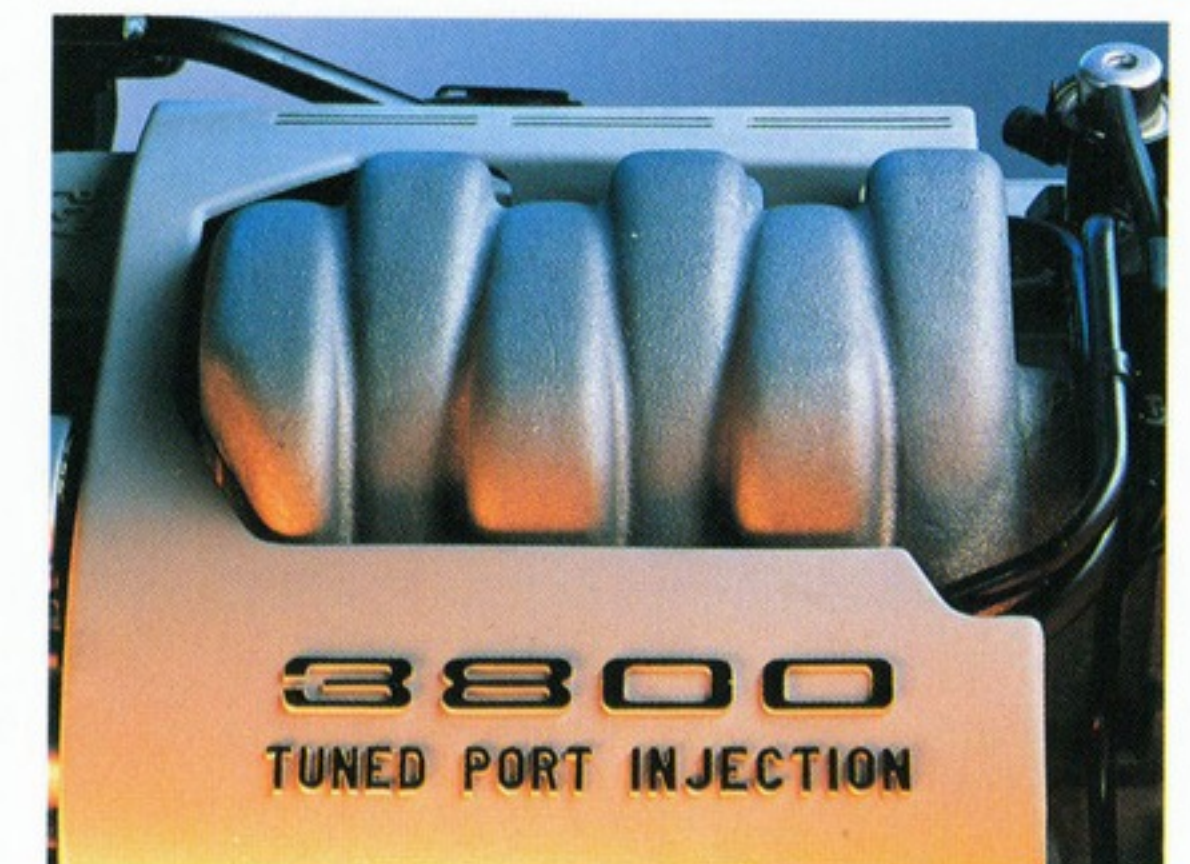


RIVIERA

For 1992, Riviera – like the original 1963 coupe – is a car that stands out in a crowd. Graceful, distinctive, mature in style. This contemporary quality-built North American classic remains impressive in its capabilities.

Riviera accelerates confidently with a powerful 3.8 litre 3800 tuned-port fuel injected V6 engine and an electronically controlled 4-speed automatic transmission that smoothly paves the way. Shift points are barely discernable.

Enjoyable handling is courtesy of the 4-wheel independent suspension with DynaRide tuning or available sport-tuned Gran Touring suspension handling. With either, you have the luxury of automatic rear level control.



▲ This responsive 3.8 litre V6 engine has a 90-degree overhead valve configuration and lightweight pistons that minimize friction and maximize efficiency.

◀ Riviera Coupe



Be thoroughly comfortable and in control.

Just shut the door and enjoy the quiet. Turn the key and you are in command of more than just a superb front-wheel drive powertrain. Your driver's environment includes a power-operated bucket seat with recliner, Tilt-Wheel™ with concealed safety air bag, electronic touch Climate Control and six Concert Sound II speakers driven by a premium AM/FM stereo sound system with cassette tape player. There is even a retained power feature that keeps the sound system, windows, wipers and optional sunroof operational for 10 minutes after the ignition is turned off, or until you open a door.

An electrochromic automatic dimming inside rearview mirror, automatic power door locks and a power operated passenger-side seatback recliner are all part of a handsome Riviera option package.



▲ A compact disc player with graphic equalizer is a Riviera premium option. The incredible quality of a Delco/Bose Gold Series Music System is also available.

◀ Luxurious Riviera interior shown here with available Ultra Soft leather in the seating areas.

FEATURES AND OPTIONS

RIVIERA

MODEL AVAILABILITY
Riviera

Coupe
■
RIVIERA
▼

STANDARD AND AVAILABLE EQUIPMENT

Air bag - driver-side Supplemental Inflatable Restraint (SIR) system	S
Air conditioning - automatic, electronic Climate Control	S
Antenna - automatic, power	S
Armrest - rear-seat, centre-folding	S
Body panels - galvanized two-sided steel, except roof	S
Brake/transmission shift interlock	S
Coach lamps - electroluminescent	S
Carpet savers - front and rear	S
Console - full-length operating with armrest	S
Cornering lamps	S
Cruise control - electronic	S
Defogger - electric rear-window	S
Door edge guards - body-colour	S
Door locks - electric	S
Exhaust system - stainless steel	S
Fuel filler door release - electric remote release	S
Glass - EZ-Kool™ solar control, tinted	S
Headlamp control - Daytime Running Lamps with Twilight Sentinel	S
Illuminated entry system	S
Indicators - low fluid levels	S
Instrumentation - electronic/analogue with tachometer	S
Lights - front-seat reading, courtesy and door warning	S
Lights - trunk, engine compartment and instrument panel courtesy	S
Mirrors - outside, electric, left and right remote with floodlit controls	S
Mirrors - lighted visor vanity, driver and passenger	S
Radio - ETR AM/FM stereo with cassette tape player and 6-speaker Concert Sound II	S
Retained accessory power	S
Seats - cloth, buckets with manual recliners and front seatback pockets	S
Seat - 6-way power, driver	S
Steering column - Tilt-Wheel™	S
Steering wheel - leather-wrapped	S
Theft-deterrent system - PASS-Key	S
Trunk release - electric	S
Windows - power with floodlit controls	S
Windshield wipers - 2-speed with low-speed delay feature	S



PREFERRED EQUIPMENT GROUPS:

To help simplify the buying process, the 1992 Riviera has optional Preferred Equipment Groups (P.E.G.'s). Choose the equipment group you desire, then select from the accompanying list of individual options. Some restrictions apply. See your sales representative for details.

MODELS	RIVIERA	
P.E.G. ORDERING CODE	1SD	1SE
Mirror - inside rearview, automatic day/night system, electrochromic	•	•
Seat - 6-way power, passenger	•	•
Seat recliner - power, passenger	•	•
Door locks - automatic, electric	•	•
Keyless entry - remote control	•	•
Mirrors - outside, electric, left and right remote, left heated	•	•
Theft-deterrent system - alarm with starter-interrupt	•	•
Trunk release - electric, with pull-down feature	•	•

INDIVIDUAL OPTIONS:

The following individual options may be ordered. Some restrictions apply. See your sales representative for details.

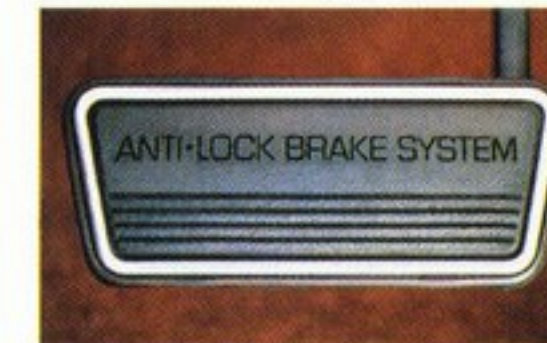
Astroroof ¹ - electric sliding
Gran Touring suspension package
Paint - Firemist
Paint - two-tone
Radio - ETR AM stereo/FM stereo with cassette tape player, compact disc player, graphic equalizer and Bose 4-speaker system
Radio - Delco/Bose Gold Series Music System with ETR AM stereo/FM stereo with cassette tape player, compact disc player and Bose 4-speaker system
Riviera Appearance Package ²
Roof - heavily padded Landau
Seats - Sierra leather seating areas
Seats - 6-way power, power lumbar, power recliners and Sierra leather seating areas
Wheels - 15" x 6" aluminum
Wheels - 15" x 6" painted aluminum ²

S - Standard equipment

• Included in Preferred Equipment Group

¹ Reduces head room slightly.

² See your sales representative for colour availability.



▲ Standard four-wheel disc brakes with anti-lock brake system (ABS) allows you to brake safely - even in an emergency - and still steer your Riviera in the desired direction.



▲ Digital and analogue instrumentation provides important information quickly and clearly. Features include a driver-side Supplemental Inflatable Restraint system (air bag) and new EZ-Kool™ solar control glass - to help shield out the sun's harmful ultra-violet rays and to improve air conditioning cool-down time.

POWERTRAIN & CHASSIS/DIMENSIONS

POWERTRAIN & CHASSIS

Engine -	
Model, type; Riviera	3.8L 3800 SFI V6
Horsepower	170 @ 4800 RPM
Torque - lb./ft.	220 @ 2800 RPM
Fuel management	sequential tuned-port fuel injection (SFI)
Transmission;	4-speed automatic with overdrive - electronically controlled
Steering;	power, rack-and-pinion
Brakes;	power, 4-wheel disc with anti-lock system (ABS)
Suspension;	DynaRide, 4-wheel independent with automatic rear level control
Tires;	P205/70R-15 steel-belted, all-season whitewall
Wheels;	15" x 6" steel with custom locking wire

DIMENSIONS: mm (in.)

Exterior	
Length	5037 (198.3)
Width	1821 (71.7)
Height	1361 (53.6)
Wheelbase	2743 (108.0)
Front tread	1521 (59.9)
Rear tread	1521 (59.9)
Interior, front/rear	
Leg room	1085/904 (42.7/35.6)
Head room	960/960 (37.8/37.8)
Shoulder room	1471/1458 (57.9/57.4)
Hip room	1420/1407 (55.9/55.4)
Capacity	
Passenger	5
Trunk, L (cu.ft.)	408 (14.4)
Fuel tank, L (gal.)	71 (15.7)
Curb weight, kg. (lb.)	1567 (3,454)

EXTERIOR COLOURS

40 - Arctic White	93 - Diamond White [†]	72 - Ruby Red Metallic
76 - Claret Red Metallic	55 - Chamois	33 - Light Driftwood Metallic
56 - Alabaster Beige	18 - Dark Jadestone Metallic	83 - Sapphire Blue Firemist [†]
28 - Midnight Blue Metallic	13 - Sterling Silver Metallic	87 - Pewter Gray Metallic
41 - Black		

[†]Extra cost colour.

Riviera offers an available two-tone paint colour combination. The lower body accent colour is Sterling Silver Metallic. The optional Riviera Appearance Package includes a lower body accent colour of Champagne Beige Metallic. Check with your sales representative for upper paint colour combination availability.

NOTE: See your sales representative for available interior trim colour selection.



◀ Riviera Coupe (foreground) shown with Gran Touring suspension package for more spirited driving. Includes special springs, shocks, stabilizer bars, quick-ratio power steering, 15" aluminum wheels and P215/65R-15 all-season blackwall Touring tires. Riviera Coupe (background) with available padded landau roof treatment.



Regal continues to deliver what its name promises.

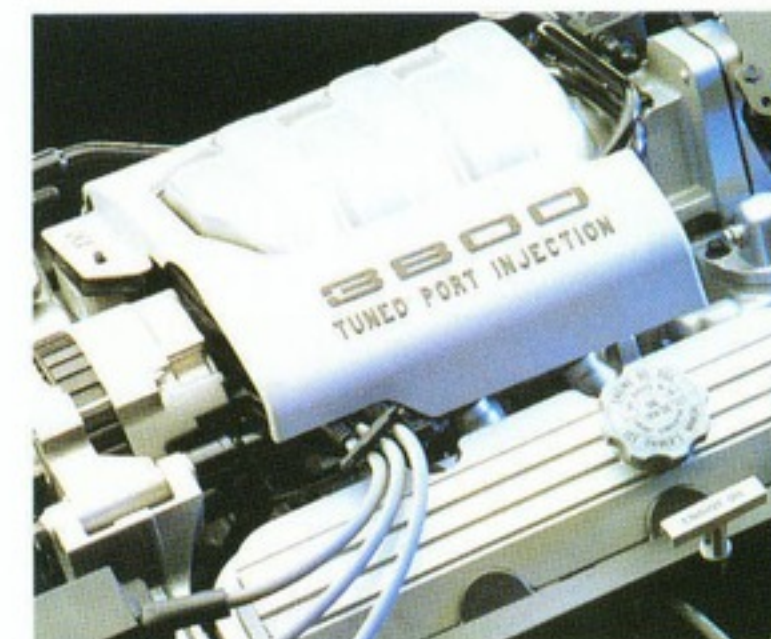
Besides its obvious good looks and mid-size room is a unique GM lubed-for-life four-wheel independent DynaRide suspension for a solid first-class ride. Buick's DynaRide tuning filters out annoying pavement

REGAL

irregularities and handles curves gracefully. And front-wheel drive provides all-season traction.

At its introduction last year, *"Car and Driver"* magazine hailed it as "Low, sleek and athletic...one of the best behaved North American cars, ever".

▼ Regal Limited Sedan shown with available aluminum wheels.



Regal's standard V6 is a healthy 3.1 litre with 140 HP. Optional is the 3.8 litre 3800 V6, shown here, boasting 170 HP and 220 lb./ft. of torque... authoritative passing power when you need it. (Standard, Gran Sport)

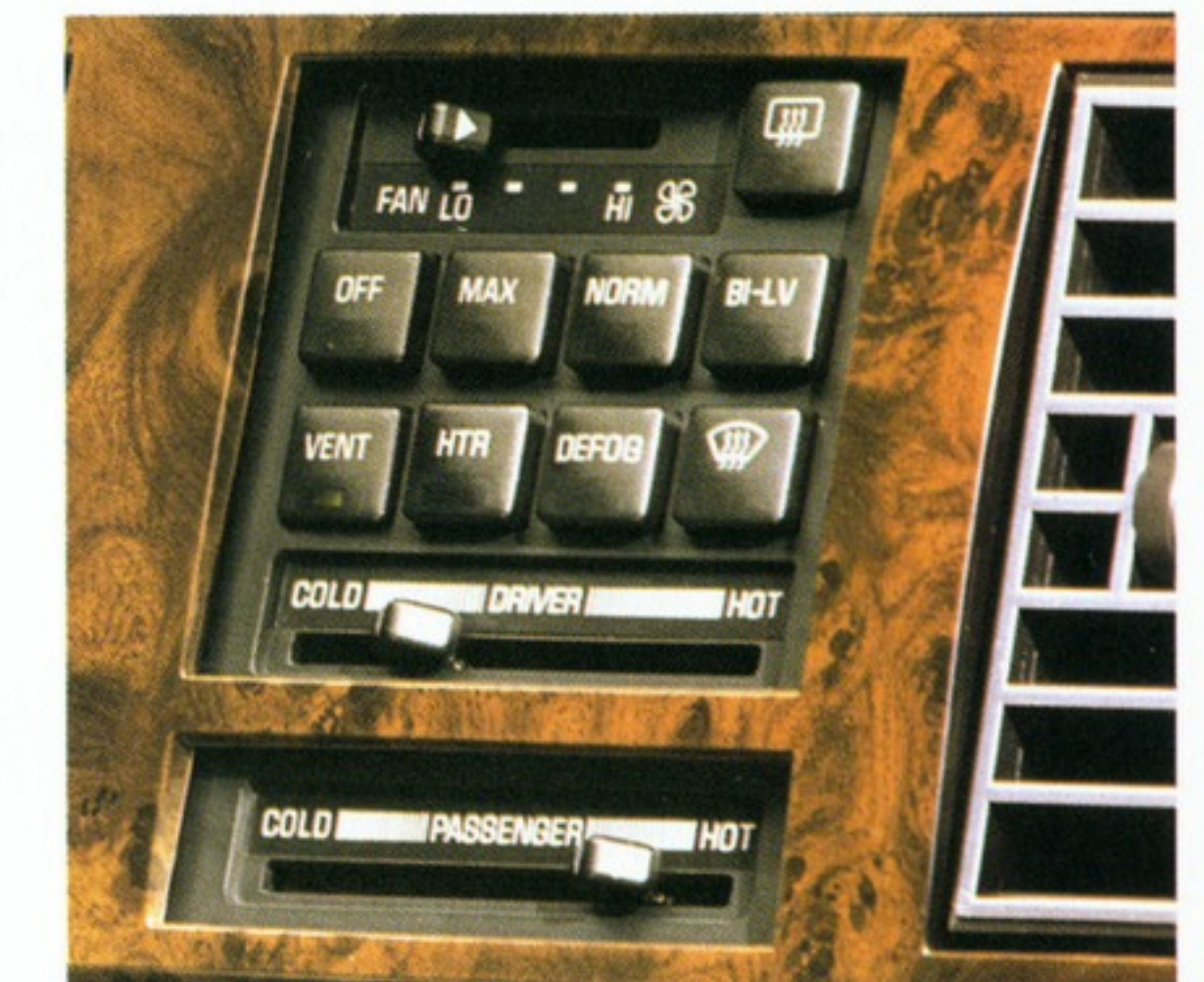




REGAL

With plush low nap carpeting, tasteful cloth upholstery, a premium sound system, air-conditioning, power door locks and Tilt-Wheel™ adjustable steering column – this is truly an impressive Buick interior.

Seating on Custom and Limited (shown) includes a well-made 55/45 divided front bench seat with manual seatback recliners and fold-down centre armrest. Regal's distinctive seat sew patterns are simply good taste at full measure. Bucket seats with ample thigh bolsters front and rear are found on Gran Sport – a Four-Seater Package detailed on P. 27 is available on Limited and Gran Sport models. Subtle luxury is even more evident with the choice of Regal's available genuine leather seating surfaces.



▲ Dual ComfortTemp Climate Control allows you and your front-seat passenger the sensible luxury of separate independent comfort settings.

◀ Regal Limited Sedan in handsome cloth.



REGAL

Behind this V6 Coupe's distinctive "waterfall" grille is a balance of flowing power and efficiency with ease. With an extremely low drag coefficient of only 0.30, Regal slips quietly and efficiently through the wind.

Surrounding this fashionable coupe's flush-mounted

tinted glass is a steel structure built for safety and quality all around. A solid internal safety cage helps keep crushed and buckling vehicle components outside the passenger compartment during the chance of a severe impact. Steel panels, except for the roof, are double-sided galvanized steel to resist

corrosion. Even Regal's fibreglass transverse-mounted single rear leaf spring – engineered for maximum ride control – is weight efficient and corrosion resistant.

Quality. Many claim it...Regal captures it!



◀ Available remote keyless entry system increases convenience in proportion to your peace of mind by locking, or unlocking all doors, or unlocking deck lid – all from a distance of up to 5 m/15 ft.

▼ Regal Limited Coupe shown with available Gran Touring suspension package.





REGAL

Gran Sport offers a world-class 3.8L 3800 V6 with tuned-port fuel injection, Gran Touring suspension for superior road-handling qualities and wide Touring tires on 16-inch aluminum wheels. And the added confidence that comes with knowing you have four-wheel disc anti-lock brakes (ABS).

Gran Sport – Coupe or Sedan. Elegant yet responsive.

Custom Sedans and Coupes are powered by

the lively 3.1 litre V6 with patented fast-burn combustion chambers. Electronic sensors accurately meter fuel to fit your engine's specific needs. The ignition system, unaffected by weather, is so dependable that "starts" are instantaneous, whether the engine is hot or cold. A smooth-shifting 4-speed automatic transmission includes a fuel-saving overdrive mode.

Even this entry level Custom has a long-lasting durable stainless steel exhaust system. Regal. Quality choices, not compromises.



▲ Regal Custom Coupe with available aluminum wheels.

◀ Regal Custom Sedan with available aluminum wheels (background) shown here with a Regal Gran Sport Sedan (foreground).

▼ Regal Gran Sport Coupe featuring sleek body-coloured grille and useful fog lamps.



FEATURES AND OPTIONS

REGAL CUSTOM, REGAL LIMITED AND REGAL GRAN SPORT

MODEL AVAILABILITY	Coupe	Sedan
Custom	■	■
Limited	■	■
Gran Sport	■	■

STANDARD AND AVAILABLE EQUIPMENT

	CUSTOM	LIMITED	GRAN SPORT
Air conditioning	S	S	
Air conditioning - dual ComforTemp Climate Control	A	A	S
Antenna - automatic, power	A	A	S
Armrest - front-seat, centre-folding with storage	S	S	
Carpet savers - front and rear	A	A	S
Console - full-length operating with armrest	A	A	S
Cruise control - electronic	A	A	S
Defogger - electric rear-window	S	S	S
Door locks - electric	S	S	S
Fog lamps - integrated in lower front fascia (Coupe)	S	S	S
Glass - Soft-Ray tinted	S	S	S
Headlamp control - Daytime Running Lamps with Twilight Sentinel	S	S	S
Heat ducts - rear-seat	S	S	S
Instrumentation - digital speedometer	S	S	S
Instrumentation - analogue cluster with tachometer	A	S	S
Lights - front-seat header, reading and courtesy	S	S	S
Lights - trunk, engine compartment, and instrument panel courtesy	S	S	S
Mirrors - outside, left remote/right manual	S	S	S
Mirrors - outside, electric, left and right remote	A	A	S
Mirrors - covered visor vanity, driver and passenger	S	S	S
Radio - ETR AM/FM stereo with 4-speaker system	S	S	S
Radio - ETR AM/FM stereo with cassette tape player and 6-speaker Concert Sound II	A	A	S
Seats - cloth, 55/45 divided front with manual recliners	S	S	S
Seats - cloth, bucket with manual recliners	A	A	S
Seat adjuster - 4-way manual, driver	A	A	S
Steering column - Tilt-Wheel™	S	S	S
Steering wheel - leather-wrapped	A	A	S
Trunk release - electric	A	A	S
Windows - power with driver "express-down" feature	A	A	S
Windshield wipers - 2-speed with low-speed delay feature	S	S	S



PREFERRED EQUIPMENT GROUPS:

To help simplify the buying process, the 1992 Regals have optional Preferred Equipment Groups (P.E.G.s). Choose the equipment group you desire, then select from the accompanying list of individual options. Some restrictions apply. See your sales representative for details.

MODELS P.E.G. ORDERING CODE	ISB	ISC	ISD	ISE	ISB	ISC	ISD	ISE	ISE
Carpet savers - front and rear	•	•	•	•	•	•	•	•	S
Cruise control - electronic	•	•	•	•	•	•	•	•	S
Seat adjuster - 4-way manual, driver	•	•	•	•	•	•	•	•	
Air conditioning - dual ComforTemp Climate Control	•	•	•	•	•	•	•	•	S
Radio - ETR AM/FM stereo with cassette tape player	•	•	•	•	•	•	•	•	
Windows - power with driver "express-down" feature	•	•	•	•	•	•	•	•	S
Antenna - automatic, power	•	•	•	•	•	•	•	•	S
Mirrors - outside, electric, left and right remote	•	•	•	•	•	•	•	•	S
Tires - P215/70R-15 steel-belted, all-season Touring blackwall	•	•	•	•	•	•	•	•	
Trunk release - electric	•	•	•	•	•	•	•	•	S
Wheels - 15" x 6" aluminum	•	•	•	•	•	•	•	•	
Speaker system - 6-speaker Concert Sound II	•	•	•	•	•	•	•	•	S
Keyless entry - remote control	•	•	•	•	•	•	•	•	
Mirrors - lighted visor vanity, driver and passenger	•	•	•	•	•	•	•	•	
Seat - 6-way power, driver	•	•	•	•	•	•	•	•	
Lights - door courtesy (Sedan)	•	•	•	•	•	•	•	•	
Radio controls - steering-wheel-mounted	•	•	•	•	•	•	•	•	
Radio - ETR AM stereo/FM stereo with cassette tape player and graphic equalizer	•	•	•	•	•	•	•	•	



Available steering wheel radio controls are at your fingertips and complete information only a glance away in the Regal's easy-to-use instrument panel. A premium Buick option shown here is the high quality Delco compact disc player.

INDIVIDUAL OPTIONS:

The following individual options may be ordered. Some restrictions apply. See your sales representative for details.

Anti-lock brake system (ABS) (Custom)
 Astrorof - electric sliding¹
 Door edge guards (Custom, Limited)
 Engine - 3.8L 3800 SFI V6 (Custom, Limited)
 Four-Seater Package - 4 buckets with trunk pass-through and rear headrests (Limited, Gran Sport)
 Gran Touring suspension package - 16" wheels and tires with specific suspension componentry (Custom, Limited)
 Instrumentation - analogue cluster with tachometer (Custom)
 Lights - front-seat header, reading and courtesy (Custom)
 Luggage rack - deck lid
 Mouldings - black, wide with red stripe (Custom Coupe, Limited Coupe)
 Paint - two-tone (Custom Coupe, Limited Coupe)
 Radio - ETR AM stereo/FM stereo with cassette tape player and graphic equalizer (Custom, Limited)
 Radio - ETR AM/FM stereo with compact disc player
 Radio controls - steering-wheel-mounted (Custom, Gran Sport)
 Seats - buckets with manual recliners
 Seats - Sierra leather seating areas (Limited, Gran Sport)
 Seat - 6-way power, driver and/or passenger
 Stripes - body-side (Custom Coupe, Limited Coupe)
 Tires - P205/70R-14 steel-belted, all-season whitewall
 Tires - P205/70R-15 steel-belted, all-season Touring whitewall
 Wheels - 14" x 5.5" aluminum
 Wheels - 14" x 5.5" styled steel
 Wheel covers - 15" custom locking wire

S - Standard equipment
 A - Available equipment
 • Included in Preferred Equipment Group
¹ - Reduces head room slightly

POWERTRAIN & CHASSIS/DIMENSIONS

POWERTRAIN & CHASSIS

Engine - Model, type;	3.1L MFI V6
Custom, Limited	140 @ 4200 RPM
Horsepower	185 @ 3200 RPM
Torque - lb./ft.	multi-port fuel injection (MFI)
Fuel management	
Model, type; Gran Sport (available Custom, Limited)	3.8L 3800 SFI V6
Horsepower	170 @ 4800 RPM
Torque - lb./ft.	220 @ 2800 RPM
Fuel management	sequential tuned-port fuel injection (SFI)
Transmission;	
3.1L MFI V6	4-speed automatic with overdrive
3.8L 3800 SFI V6	4-speed automatic with overdrive - electronically controlled power, rack-and-pinion

Steering;

Brakes;

Custom
 Limited, Gran Sport (available Custom)

Suspension;

Custom, Limited
 Gran Sport (available Custom, Limited)

Tires; Custom, Limited

Gran Sport (available Custom, Limited)

Wheels; Custom, Limited
 Gran Sport (available Custom, Limited)

power, 4-wheel disc

power, 4-wheel disc with anti-lock system (ABS)

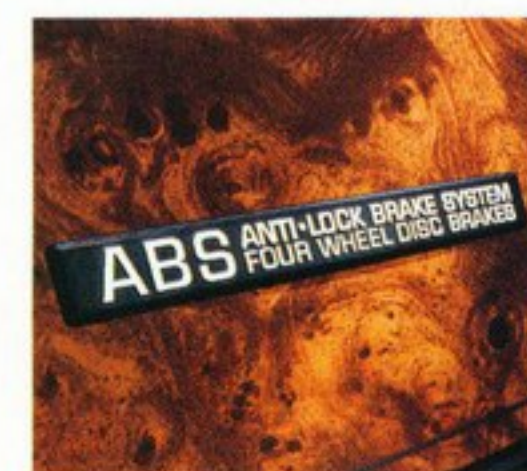
DynaRide, 4-wheel independent

Gran Touring, 4-wheel independent
 P205/70R-14 steel-belted, all-season blackwall

P225/60R-16 steel-belted, all-season Touring blackwall

14" x 5.5" steel with deluxe wheel covers

16" x 6.5" aluminum



Standard 4-wheel disc brakes, for better heat dissipation, and an anti-lock brake system (ABS) increases steering and braking control on slick surfaces. ABS standard on Limited/Gran Sport, optional on Custom.



Power window controls offer concave and convex shapes to facilitate effortless operation without taking eyes from the road. The driver's window has the convenient "express-down" feature and child-proof override feature.

Buick is building on a responsible tradition of improving vehicle dependability. That concern reflects in this proven 3.1 litre V6 powerplant with an ignition system so dependable that "starts" are so quick they are measured in milliseconds.

DIMENSIONS mm (in.)

	Coupe	Sedan
Exterior		
Length	4917 (193.6)	4942 (194.6)
Width	1842 (72.5)	1800 (70.9)
Height	1346 (53.0)	1379 (54.3)
Wheelbase	2730 (107.5)	2730 (107.5)
Front tread	1511 (59.5)	1511 (59.5)
Rear tread	1473 (58.0)	1473 (58.0)
Interior, front/rear		
Leg room	1074/884 (42.3/34.8)	1077/919 (42.4/36.2)
Head room	960/942 (37.8/37.1)	983/960 (38.7/37.8)
Shoulder room	1463/1443 (57.6/56.8)	1468/1468 (57.8/57.8)
Hip room	1321/1349 (52.0/53.1)	1339/1351 (52.7/53.2)
Capacity		
Passenger	4,5,6	4,5,6
Trunk, L (cu.ft)	442 (15.6)	447 (15.8)
Fuel tank, L (gal.)	62 (13.7)	62 (13.7)
Curb weight, kg (lb.)		
Custom	1473 (3,247)	1506 (3,321)
Limited	1475 (3,251)	1508 (3,324)
Gran Sport	1504 (3,315)	1535 (3,385)

EXTERIOR COLOURS

40 - Arctic White	72 - Ruby Red Metallic	76 - Claret Red Metallic
33 - Light Driftwood Metallic ^{1,2}	56 - Alabaster Beige ^{1,2}	23 - Maui Blue Metallic ¹
28 - Midnight Blue Metallic ^{1,2}	13 - Sterling Silver Metallic	87 - Pewter Gray Metallic
	41 - Black	

¹Not available on Gran Sport Sedan. ²Not available on Gran Sport Coupe. A lower body accent colour of Pewter Gray Metallic is standard on Gran Sport Sedan. Regal Custom and Limited Coupe offer an available two-tone paint colour combination. The lower body accent colour is Sterling Silver Metallic or Pewter Gray Metallic. Check with your sales representative for upper paint colour combination availability. NOTE: See your sales representative for available interior trim colour selection.

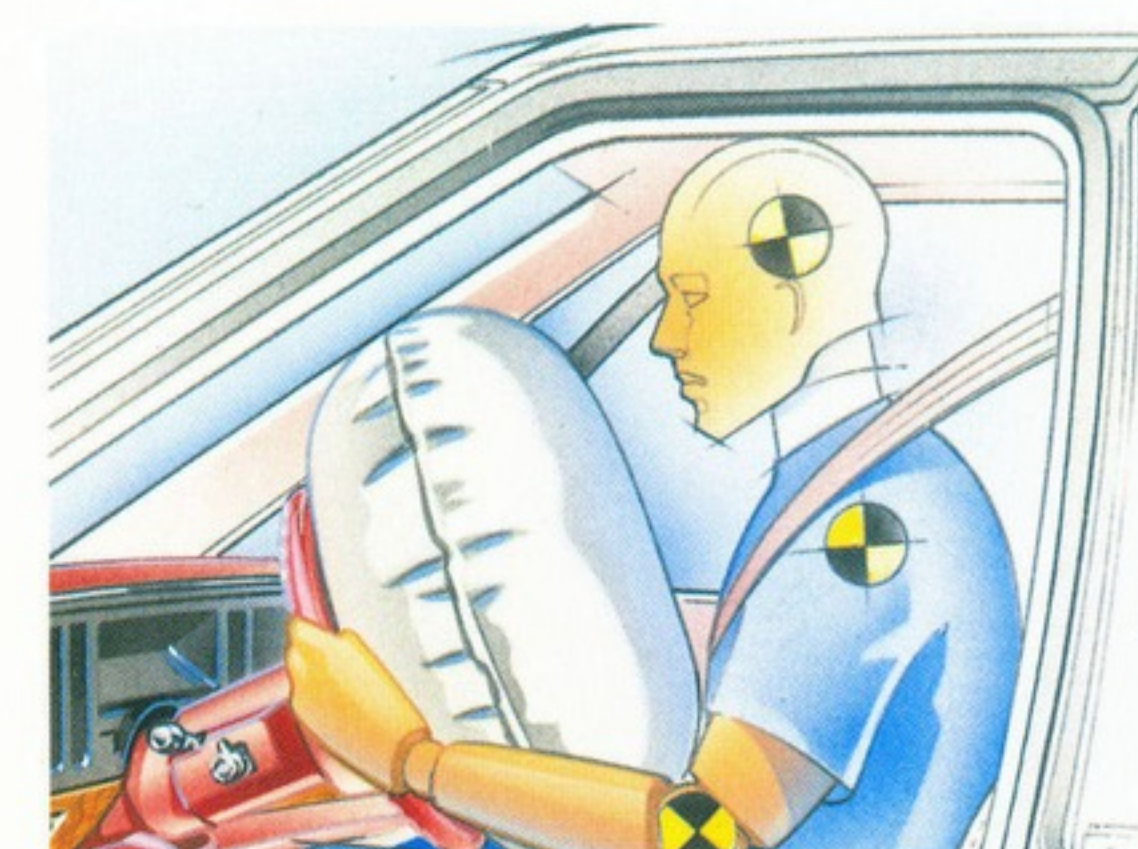


LESABRE

This all-new LeSabre, the most advanced ever, belongs in a world where backroad S-curves are welcome and a snowfall is beautiful rather than intimidating. Front-wheel drive pulls you through with poise. Power comes from a sophisticated 3.8 litre 3800 V6 tuned-port fuel injected engine and an electronically controlled 4-speed transmission that features seamless precision due to computerized shift control.

DynaRide suspension polishes life's rough edges. Anti-lock brakes, standard on Limited, control brake pressure individually at each wheel to maximize traction and promote confident steering control during hard braking – even on slick surfaces.

Welcome to a world of real Buick quality.



▲ When used with safety lap/shoulder belts, the driver-side air bag gives you additional protection in case of a severe frontal impact.

◀ Buick LeSabre Limited Sedan

LESABRE

There are many reasons why the 6-passenger LeSabre has been Buick's best-selling full-size car. Safety is one of them. LeSabre features a brake/transmission shift interlock that prevents shifting out of "Park" unless the brake is applied. A solid internal safety cage integrated with scientifically organized "crush zones" helps keep crushed and buckling vehicle components outside the passenger compartment. Standard driver-side air bag, lower frame rail reinforcements and large front disc brake rotors are just a few more.

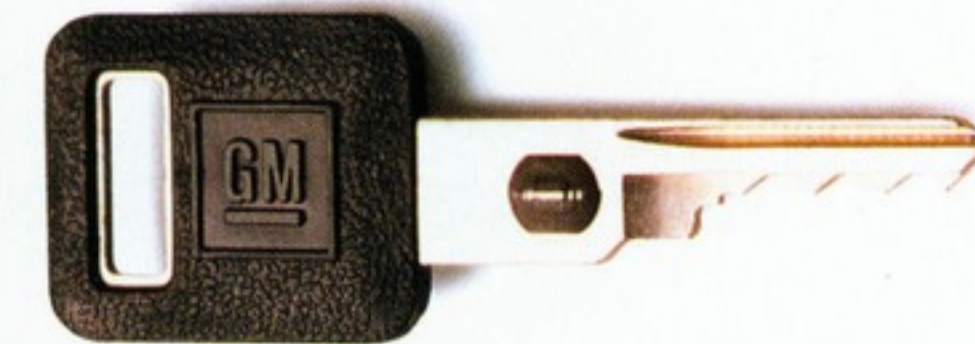
Corrosion resistant double-sided galvanized steel (except the roof), Polymer composite front fenders that resist dings and dents and new mirror-like Waterborne base coat paint are all part of LeSabre's construction.

Security is reassuring with child rear door security locks that can be adjusted to stay locked from the inside and PASS-Key – a theft-deterrent, personalized automotive security system.

Real world circumstances demand real Buick quality.



▲ Anti-lock braking system (ABS) minimizes wheel lockup during hard braking – even on slick surfaces – maximizing traction and allowing you steering control (standard on Limited, available on Custom).

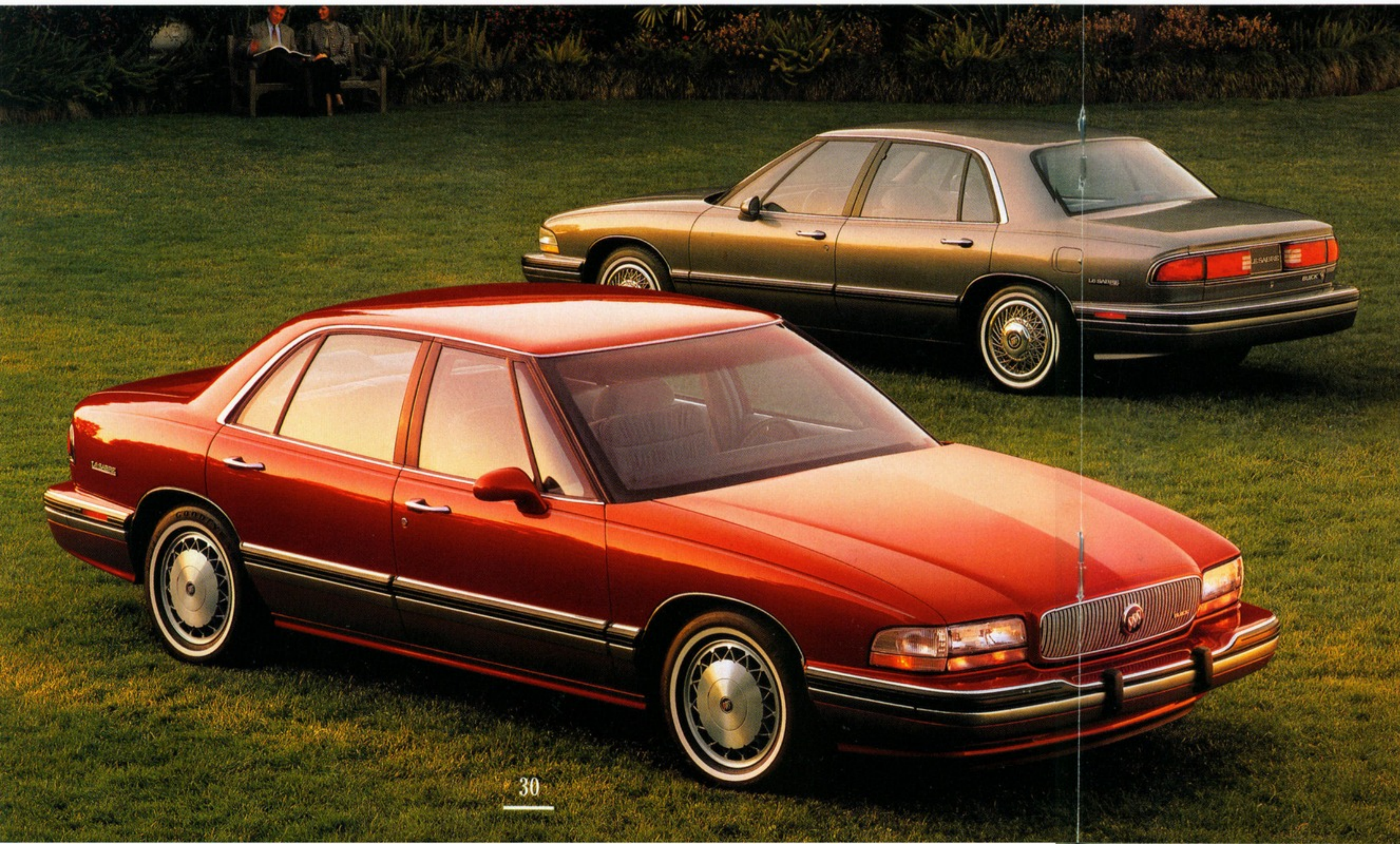


▲ Sensors in LeSabre's "personalized" PASS-Key ignition key must correspond to the starter relay or the engine will not start, helping you to avoid theft.

▼ This premium 3800 tuned-port fuel injected V6 and new electronically controlled 4-speed transmission with overdrive feature give LeSabre exhilarating passing, smooth shifts – all without being overly consumptive.



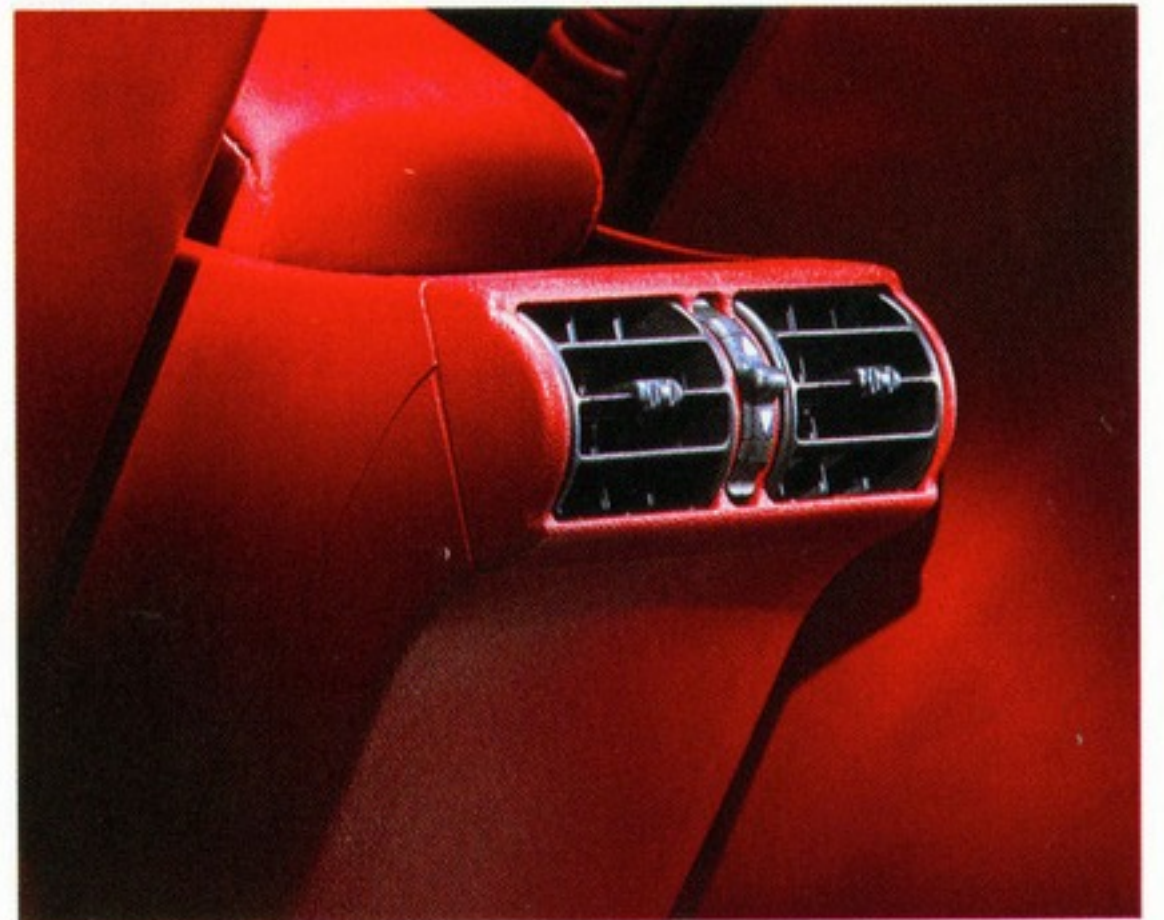
◀ LeSabre Limited Sedan (foreground) shown with optional aluminum wheels. LeSabre Custom Sedan (background) shown with optional wire wheel covers.





It's easy to see why LeSabre will continue to be at the head of its class. These comfortable plush seats are split bench in front, with centre storage armrest and seatback recliners – the fabric itself a soft stripe pattern (Limited shown) with gentle side contours designed to hold you in place. Limited's standard power windows include a driver-side "express-down" feature and child-security lockout switch. Touching a button on the driver's door prevents active little ones from moving windows up or down. A new shoulder belt adjuster lets you adjust the height for the most comfortable and secure position and standard supplemental sunshades provide shading for both the windshield and side windows – at the same time.

Drive the 1992 LeSabre; we know you'll give it your stamp of approval.



- ▲ Limited Sedans feature this available rear-seat heating and cooling distribution system which provides directionally controlled airflow for rear-seat comfort.
- ◀ Buick LeSabre Limited – full size 6-passenger comfort. Genuine leather seating surfaces are available.

FEATURES AND OPTIONS

LESABRE CUSTOM & LESABRE LIMITED

MODEL AVAILABILITY

Custom
Limited

Sedan

■

■

CUSTOM LIMITED

STANDARD AND AVAILABLE EQUIPMENT

Air bag - driver-side Supplemental Inflatable Restraint (SIR) system	S	S
Air conditioning - electronic controls	S	S
Antenna - automatic, power	A	S
Armrest - front-seat, centre folding with storage	S	S
Brake/transmission shift interlock	S	S
Carpet savers - front and rear	A	S
Cruise control - electronic	S	S
Defogger - electric rear-window	S	S
Door locks - electric	S	S
Exhaust system - stainless steel	S	S
Glass - Soft-Ray tinted	S	S
Headlamp control - Daytime Running Lamps with Twilight Sentinel	S	S
Instrumentation - analogue with trip odometer and low oil level indicator	S	S
Lights - trunk, engine compartment and instrument panel courtesy	S	S
Lights - front and rear reading and roof rail courtesy	S	S
Locks - rear-door child-security latches	S	S
Mirrors - outside, left remote/right manual	S	S
Radio - ETR AM/FM stereo with 4-speaker system	S	S
Radio - ETR AM/FM stereo with cassette tape player and 4-speaker system	A	S
Seats - cloth, 55/45 divided front with manual recliners and seatback pockets	S	S
Seats - deluxe cloth, 55/45 divided front with manual recliners and seatback pockets	S	S
Seat - 6-way power, driver	A	S
Shoulder belts - front seat height adjuster	S	S
Steering column - Tilt-Wheel™	S	S
Stripes - body-side	A	S
Theft deterrent system - PASS-Key	S	S
Windows - power with driver "express-down" feature	S	S
Windshield wipers - 2-speed with low-speed delay feature	S	S



PREFERRED EQUIPMENT GROUPS:

To help simplify the buying process, the 1992 LeSabres have optional Preferred Equipment Groups (P.E.G.'s). Choose the equipment group you desire, then select from the accompanying list of individual options. Some restrictions apply. See your sales representative for details.

MODELS	CUSTOM	LIMITED
P.E.G. ORDERING CODE	ISD	ISE
Carpet savers - front and rear	•	•
Radio - ETR AM/FM stereo with cassette tape player	•	•
Radio - ETR AM stereo/FM stereo with cassette tape player, graphic equalizer and 6-speaker Concert Sound II	•	•
Stripes - body-side	•	•
Wheel covers - 15" custom locking wire	•	•
Antenna - automatic, power	•	•
Brakes - anti-lock system (ABS)	•	•
Door edge guards	•	•
Mirror - lighted visor vanity, passenger	•	•
Seat - 6-way power, driver	•	•
Trunk release - electric	•	•
Convenience net - in trunk	•	•
Lights - door courtesy and warning	•	•
Mirrors - outside, electric, left and right remote	•	•
Air conditioning - automatic dual ComforTemp Climate Control includes rear-seat ComforTemp heating and cooling ventilation	•	•
Cornering lamps	•	•
Keyless entry - remote control	•	•
Seat - 6-way power, passenger	•	•

INDIVIDUAL OPTIONS:

The following individual options may be ordered. Some restrictions apply. See your sales representative for details.

Antenna - automatic, power (Custom)
 Axle ratio - specific
 ElectriClear heated windshield
 Gran Touring suspension package
 Instrumentation - analogue cluster with tachometer (Limited)
 Radio - ETR AM/FM stereo with cassette tape player (Custom)
 Radio - ETR AM stereo/FM stereo with cassette tape player, graphic equalizer and 6-speaker Concert Sound II
 Radio - ETR AM stereo/FM stereo with compact disc player, graphic equalizer and 6-speaker Concert Sound II
 Roof - vinyl top, full
 Seats - Sierra leather seating areas
 Seat - 6-way power, driver (Custom)
 Tires - P205/70R-15 steel-belted, all-season blackwall
 Traction control¹ (Limited)
 Trailer Towing Package - 1361 kg/3,000 lb. capacity
 Wheels - 15" x 6" aluminum
 Wheel covers - 15" custom locking wire

S - Standard equipment

A - Available equipment

• Included in Preferred Equipment Group

¹ - Interim availability. See your dealer for details.



▲ A LeSabre design advance includes a trunk with a low lift-over height. Now it takes less effort to load the 484L/17.1 cu.ft trunk area.



▲ Optional world-class dual automatic ComforTemp Climate Control on the Limited allows both driver and front passenger to control temperatures separately within a 3°C/5°F range.



▲ The distinctive wraparound instrument panel on this new Limited features an optional back-lit analogue gauge cluster with full instrumentation and accurate information.



▲ The Limited's available Gran Touring suspension package includes these 16" aluminum wheels, Touring blackwall tires, firmer suspension componentry, leather-wrapped steering wheel and automatic rear level control. Traction Control¹ - designed to minimize wheel slippage - will be a quality option for Limited Sedans in 1992.

POWERTRAIN & CHASSIS/DIMENSIONS

POWERTRAIN & CHASSIS

Engines	
Model, type; Custom, Limited	3.8L 3800 SFI V6
Horsepower	170 @ 4800 RPM
Torque - lb./ft.	220 @ 2800 RPM
Fuel management	sequential tuned-port fuel injection (SFI)
Transmission;	4-speed automatic with overdrive - electronically controlled
Steering;	power, rack-and-pinion
Brakes; Custom Limited (available Custom)	power, front disc/rear drum with anti-lock system (ABS)
Suspension;	DynaRide, 4-wheel independent
Tires;	P205/70R-15 steel-belted, all-season whitewall
Wheels;	15" x 6" steel with deluxe wheel covers

¹ - Interim availability. See your dealer for details.

DIMENSIONS mm (in.)

Exterior	
Length	5081 (200.0)
Width	1903 (74.9)
Height	1414 (55.7)
Wheelbase	2814 (110.8)
Front tread	1534 (60.4)
Rear tread	1529 (60.2)
Interior, front/rear	
Leg room	1068/1038 (42.0/40.9)
Head room	997/961 (39.3/37.8)
Shoulder room	1502/1496 (59.1/58.9)
Hip room	1397/1382 (55.0/54.4)
Capacity	
Passenger	6
Trunk, L (cu.ft.)	484 (17.1)
Fuel tank, L (gal.)	68 (15.0)
Curb weight, kg (lb.)	
Custom	1562 (3,442)
Limited	1578 (3,477)

EXTERIOR COLOURS

40 - Arctic White	72 - Ruby Red Metallic	76 - Claret Red Metallic
57 - Champagne Beige Metallic	18 - Dark Jadestone Metallic	22 - Ice Blue Metallic
28 - Midnight Blue-Metallic	13 - Sterling Silver Metallic	85 - Gunmetal Gray Metallic
41 - Black		

NOTE: See your sales representative for available interior trim colour selection.



SKYLARK

The all-new Skylark takes Buick to a new level of international style and flair.

It's a departure from the ordinary – designed to make your overall driving experience extraordinary.

Skylark's expressive front end, for instance, divides the wind with a finely-honed drag coefficient of

0.32 – and that means minimal wind resistance and noise. Both sedans and

coupes are 229 mm/9 in. longer for increased capacity.

Quality features such as a brake/transmission shift interlock, Automatic Door Locks and anti-lock brake system (ABS) are all a part of the new Skylark's overall

total vehicle safety system – designed to help avoid accidents as well as protect occupants.

1992 Skylark – distinctive entry level Buick quality.



◀ Gran Sport's Adjustable Ride Control System gives you the choice of Soft, Auto or Sport ride, with Soft smoothing out rough roads and irregular surfaces, Sport for more aggressive handling characteristics and Auto automatically "deciding" the setting depending on conditions.

▼ Skylark Gran Sport Coupe – V6 power.





SKYLARK



These all-new premium Buicks with their unique flowing form will attract a lot of attention. They are now among the world's most interesting and appealing transportation.

Behind the smart body-colour grille of a Gran Sport is a powerful 160 HP 3300 V6. Skylarks – both sedan and coupe – get a brand new fuel injected high efficiency 2.3 litre Quad OHC engine that delivers 120 HP at 5200 RPM. Both powertrains have new torque axis engine mounts for improved isolation, smoother feel under normal operation and better management of high torque when your driving is aggressive.

The 2627 mm/103.4 in. wheelbase translates into polished travelling. And the years of smooth travelling will be prolonged – double-sided galvanized steel is used on most body panels and the exhaust system is stainless steel.



▲ Skylark Sedan (foreground) shown with optional 15-inch styled wheel covers and Skylark Gran Sport Sedan with optional two-tone paint (background). Gran Sport features Adjustable Ride Control System, special shocks, stabilizer bars, fast-ratio power steering and wide 16-inch Eagle GA Touring all-season blackwalls.

◀ Skylark Coupe

SKYLARK

Safety, comfort and modern convenience share top priority in Skylark's contemporary interior.

Side-guard door beams and high-integrity cockpit construction help protect driver and passenger alike.

A self-aligning feature safety steering wheel is designed to help minimize injury by folding flat against the driver upon impact. Because a locked door is a more secure door, Automatic Door Locks and rear-door

child-security latches add to your peace-of-mind.

The thoroughly designed Skylark cabin also includes – for Gran Sport – adjustable lumbar back support and 4-way manual driver-seat adjuster.

An easy-entry sliding passenger front-seat for coupes and rear sedan doors that open wide to 80°, are designed for the real world.

Modern quality from Buick.

▼ Gran Sport interior shown with contoured front bucket seats, standard genuine leather trim and cloth inserts in all seating areas.



◀ The split-folding rear-seat with trunk pass-through allows you the versatility of 3-passengers and 3 sets of skis. Rear passengers will benefit too from under-seat heating ducts and the increased leg room.



FEATURES AND OPTIONS SKYLARK AND SKYLARK GRAN SPORT

MODEL AVAILABILITY

Skylark	Coupe	Sedan
Skylark Gran Sport		

STANDARD AND AVAILABLE EQUIPMENT

	SKYLARK	GRAN SPORT
Air conditioning	A	S
Automatic Door Locks (ADL) - electric	S	S
Brake/transmission shift interlock	S	S
Carpet savers - front and rear	A	S
Column shift - with standard split-bench seat (Sedan)	S	
Console - full length operating with armrest	S ¹	S
Convenience net - trunk	A	S
Defogger - electric rear-window	S	S
Ducts - rear-seat heating	S	S
Exhaust system - stainless steel	S	S
Fuel filler door release - remote	S	S
Glass - Soft-Ray tinted	S	S
Headliner - deluxe, includes lighted visor vanity mirrors	A	S
Instrumentation - analogue cluster with tachometer	S	S
Lights - trunk, engine compartment and instrument panel courtesy	S	S
Locks - rear-door child-security latches	S	S
Mirrors - outside, left remote/right manual	S	S
Mirrors - covered visor vanity, driver and passenger	S	
Mirrors - lighted visor vanity, driver and passenger	A	S
Radio - ETR AM/FM stereo with 4-speaker system	S	
Radio - ETR AM/FM stereo with cassette tape player and 6-speaker Concert Sound II	A	S
Seats - cloth, 55/45 split-bench with manual recliners (Sedan)	S	
Seats - cloth, buckets with manual recliners (Coupe)	S	
Seats - Ultra Soft leather and cloth, buckets with manual lumbar support and recliners		S
Seat - easy-entry, front passenger (Coupe)	S	S
Seat adjuster - 4-way manual, driver	A	S
Seat - split-folding rear	S	S
Steering column - Tilt-Wheel™	S	S
Steering wheel - leather-wrapped		S
Trunk release - remote	S	S



PREFERRED EQUIPMENT GROUPS:

To help simplify the buying process, the 1992 Skylarks have optional Preferred Equipment Groups (P.E.G.'s). Choose the equipment group you desire, then select from the accompanying list of individual options. Some restrictions apply. See your sales representative for details.

MODELS	SKYLARK	GRAN SPORT
P.E.G. ORDERING CODE	ISD	ISE
Armrest - front-seat, centre folding with storage (Sedan)	•	•
Carpet savers - front and rear	•	•
Cruise control - electronic	•	•
Radio - ETR AM/FM stereo with cassette tape player and 6-speaker Concert Sound II	•	•
Seat adjuster - 4-way manual, driver	•	•
Windows - power with driver "express-down" feature and child-proof override feature	•	•
Windshield wipers - 2-speed with low-speed delay feature	•	•
Air conditioning	•	•
Antenna - automatic, power	•	•
Convenience net - trunk	•	•
Headliner - deluxe, includes lighted visor vanity mirrors	•	•
Mirrors - outside, electric, left and right remote	•	•
Seat - 6-way power, driver	•	•
Keyless entry - remote control	•	•

INDIVIDUAL OPTIONS:

The following individual options may be ordered. Some restrictions apply. See your sales representative for details.

Air conditioning (Skylark)
Antenna - automatic, power
Carpet savers - front and rear (Skylark)
Cruise control - electronic
Engine - 3.3L 3300 MFI V6 (Skylark)
Keyless entry - remote control (Skylark)
Paint - two-tone (Gran Sport)
Radio - ETR AM/FM stereo with cassette tape player and 6-speaker Concert Sound II (Skylark)
Radio - ETR AM stereo/FM stereo with compact disc player, graphic equalizer and 6-speaker Concert Sound II
Suspension - Adjustable Ride Control System (Skylark)
Tires - P185/75R-14 steel-belted, all-season whitewall (Skylark)
Tires - P195/65R-15 steel-belted, all-season Touring blackwall (Skylark)
Wheel covers - 15" styled (Skylark)
Wheels - 15" x 6" aluminum (Skylark)
Windows - power with driver "express-down" feature
Windshield wipers - 2-speed with low-speed delay feature

S - Standard equipment
A - Available equipment
• Included in Preferred Equipment Group
¹ Standard on Coupe only.



▲ A generous 379L/13.4 cu.ft. of trunk space features a low lift-over sill for easy loading and unloading. Standard on Gran Sport is a convenient trunk net - to keep small items in place.



▲ As different as the exterior, this functional modern Skylark instrument panel includes a full analogue gauge cluster and controls at fingertip reach. The lockable glove compartment is deep set and includes cup holders.



▲ The 3.3 litre 3300 V6 engine which develops 160 HP, features a multi-port fuel injection system that delivers efficient vaporization in the combustion chambers, resulting in increased horsepower and torque.

► Skylark Sedan features this handsome cloth covered 55/45 split-bench seating with manual recliners. Column-mounted automatic shift lever and Automatic Door Locks are standard.



DIMENSIONS mm (in.)

Exterior	Coupe	Sedan
Length	4572 (180.0)	4572 (180.0)
Width	1692 (66.6)	1692 (66.6)
Height	1323 (52.1)	1323 (52.1)
Wheelbase	2627 (103.4)	2627 (103.4)
Front tread	1412 (55.6)	1412 (55.6)
Rear tread	1326 (52.2)	1326 (52.2)
Interior, front/rear		
Leg room	1090/871 (42.9/34.3)	1090/871 (42.9/34.3)
Head room	958/942 (37.7/37.1)	958/942 (37.7/37.1)
Shoulder room	1387/1402 (54.6/55.2)	1379/1374 (54.3/54.1)
Hip room	1240/1280 (48.8/50.4)	1227/1278 (48.3/50.3)
Capacity		
Passenger	5	5
Trunk, L (cu.ft.)	379 (13.4)	379 (13.4)
Fuel tank, L (gal.)	58 (12.7)	58 (12.7)
Curb weight, kg (lb.)		
Skylark	1262 (2,782)	1291 (2,846)
Gran Sport	1316 (2,901)	1345 (2,965)

EXTERIOR COLOURS

16 - Bright White	81 - Bright Red	72 - Ruby Red Metallic
76 - Claret Red Metallic ¹	43 - Aquamarine Metallic ¹	21 - Neon Blue Metallic ²
13 - Sterling Silver Metallic ¹	85 - Gunmetal Gray Metallic	41 - Black

¹Not available on Gran Sport. ²Available with two-tone paint only.
Skylark offers an available two-tone paint colour combination. The lower body accent colour is either Pewter Gray Metallic or Black. Check with your sales representative for upper paint colour combination availability.

NOTE: See your sales representative for available interior trim colour selection.

POWERTRAIN & CHASSIS/DIMENSIONS

POWERTRAIN & CHASSIS

Engine -	
Model, type; Skylark	2.3L Quad OHC MFI L4
Horsepower	120 @ 5200 RPM
Torque - lb./ft.	140 @ 3200 RPM
Fuel management	multi-port fuel injection (MFI)
Model, type; Gran Sport (available Skylark)	3.3L 3300 MFI V6
Horsepower	160 @ 5200 RPM
Torque - lb./ft.	185 @ 2000 RPM
Fuel management	multi-port fuel injection (MFI)
Transmission;	3-speed automatic
Steering;	power, rack-and-pinion
Brakes;	power, front disc/rear drum with anti-lock system (ABS)
Suspension;	
Skylark	DynaRide, front independent/rear semi-independent
Gran Sport	Gran Touring, Adjustable Ride Control System, front independent/rear semi-independent
Tires;	
Skylark	P185/75R-14 steel-belted, all-season blackwall
Gran Sport	P205/55R-16 steel-belted, all-season Touring blackwall
Wheels;	
Skylark	14" x 6" steel with deluxe wheel covers
Gran Sport	16" x 6" aluminum



Century's strong reputation for quality precedes it.

Buick's longtime front-wheel drive 6-passenger favourite rolls on comfortably in dependable fashion with the solid, sure handling of DynaRide suspension.

DynaRide uses deflected-disc shock absorber valving that senses the intensity of road irregularities and reacts accordingly, providing that Century smoothness.

CENTURY

Power is readily supplied by a standard fuel-injected 2.5 litre, 110 HP engine – or, the optional 3.3 litre 160 HP 3300 V6 – with multi-port fuel injection.

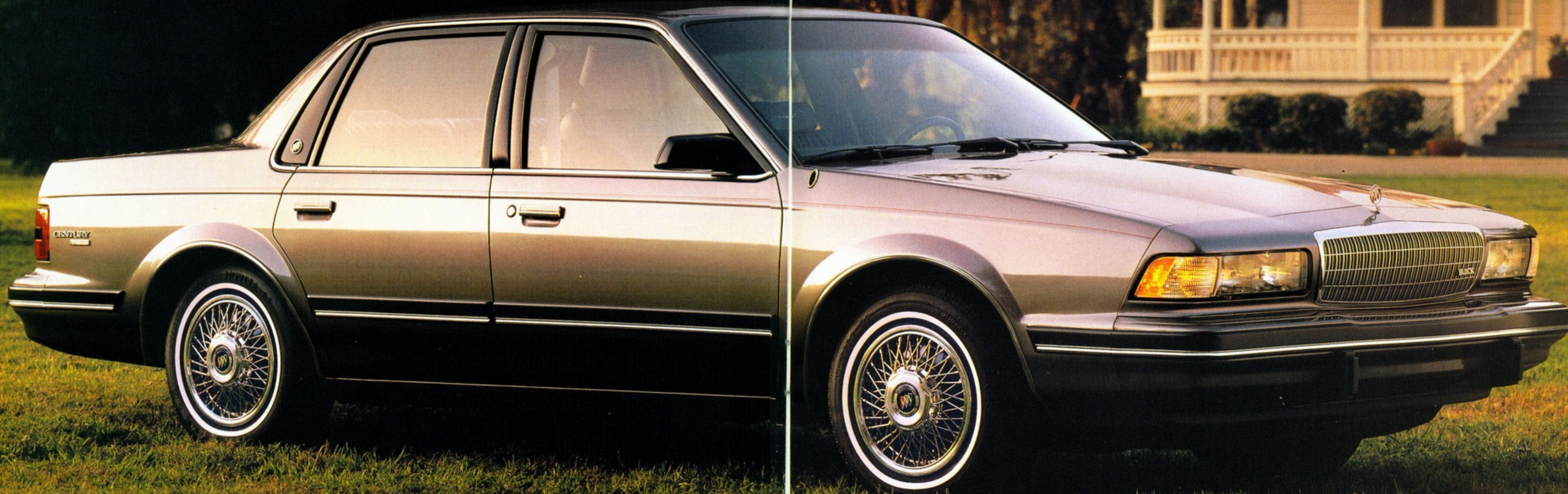
There are 4 models – 2 sedans, 2 very versatile station wagons...the Customs or luxury trimmed Limiteds.

The choice of a Buick says something about the buyer. You like the finer things in life...like Buick quality.



◀ The available 3300 V6 incorporates state-of-the-art control systems and hardware technology such as a long-life single serpentine accessory belt drive system.

▼ Buick Century Limited Sedan with optional wire wheel covers.





CENTURY



Century offers a certain relaxing quality behind the wheel, whether in the sedan, or 6- or 8-passenger wagon. And, there is certainly satisfaction in the conveniences found in all Centurys.

55/45 divided front seats covered in plush velour, power reclining seatbacks, Automatic Door Locks for added security and air conditioning are all Buick touches.

Accents of warm burl woodgrain trim make the Limited even more luxurious.

To personalize your new Century: remote keyless entry system, steering wheel radio controls, CD player and for the Limited Sedan, leather seating areas.

Century – a certain quality.



▲ Available power window and standard power door lock controls are conveniently located on the driver-side door panel – and, are thoughtfully floodlit for easy nighttime operation.

◀ 6-passenger Century Limited with 55/45 divided cloth seats and centre folding armrest with storage.

FEATURES AND OPTIONS CENTURY CUSTOM & CENTURY LIMITED

MODEL AVAILABILITY	Sedan	Wagon
Custom	■	■
Limited	■	■

STANDARD AND AVAILABLE EQUIPMENT

	CUSTOM	LIMITED
Air conditioning	S	S
Armrest - front-seat, centre folding with storage	S	S
Automatic Door Locks (ADL) - electric	S	S
Defogger - electric rear-window	S	S
Door edge guards (Limited Wagon)	A	S
Glass - Soft-Ray tinted	S	S
Headlamp control - Daytime Running Lamps	S	S
Instrumentation - analogue with trip odometer	A	S
Lights - trunk/rear compartment, engine compartment and instrument panel courtesy	S	S
Lights - front-door courtesy and warning	S	S
Mirrors - outside, left remote/right manual	S	S
Mirrors - covered visor vanity, driver and passenger	S	S
Radio - ETR AM/FM stereo with 4-speaker system	S	S
Seats - cloth, 55/45 divided front with power recliners	S	S
Storage compartments - lockable load area, side and floor (Wagon)	S	S
Stripes - body-side	A	S

PREFERRED EQUIPMENT GROUPS:

To help simplify the buying process, the 1992 Centurys have optional Preferred Equipment Groups (P.E.G.'s). Choose the equipment group you desire then select from the accompanying list of individual options. Some restrictions apply. See your sales representative for details.

MODELS P.E.G. ORDERING CODE	CUSTOM ISB ISD ISE	LIMITED ISC ISD ISE
Air deflector - rear-window (Wagon)	• • •	• • •
Carpet savers - front and rear	• • •	• • •
Luggage rack - roof (Wagon)	• • •	• • •
Steering column - Tilt-Wheel™	• • •	• • •
Tailgate release - electric remote (Wagon)	• • •	• • •
Windshield wipers - 2-speed with low-speed delay feature	• • •	• • •
Antenna - automatic, power	• • •	• • •
Cruise control - electronic	• • •	• • •
Wheel covers - 14" custom locking wire	• • •	• • •
Mirrors - lighted visor vanity, driver and passenger	• • •	• • •
Radio - ETR AM/FM stereo with cassette tape player	• • •	• • •
Seat - third, rear-facing vinyl, includes rear quarter vent windows (Wagon)	• • •	• • •
Stripes - body-side	• • •	• • •
Trunk release - electric (Sedan)	• • •	• • •
Windows - power	• • •	• • •
Instrumentation - analogue with trip odometer	• • •	• • •
Lights - front-seat reading	• • •	• • •
Mirrors - outside, electric, left and right remote	• • •	• • •
Keyless entry - remote control	• • •	• • •
Seat - 6-way power, driver	• • •	• • •
Speaker system - dual front- and rear-coaxial	• • •	• • •
Radio controls - steering-wheel-mounted	• • •	• • •



INDIVIDUAL OPTIONS:

The following individual options may be ordered. Some restrictions apply. See your sales representative for details.

Air deflector - rear-window (Wagon)
Antenna - automatic, power
Carpet savers - front and rear
Cruise control - electronic
Door edge guards (included with Limited Wagon)
Engine - 3.3L 3300 MFI V6
Keyless entry - remote control
Lights - front-seat reading
Luggage rack - deck lid (Sedan), roof (Wagon)
Mirrors - outside, electric, left and right remote
Mirrors - lighted visor vanity, driver and passenger
Radio - ETR AM/FM stereo with cassette tape player
Radio - ETR AM stereo/FM stereo with compact disc player
Radio controls - steering-wheel-mounted
Speaker system - dual front- and rear-coaxial
Seats - Sierra leather seating areas (Limited Sedan)
Seat - third, rear-facing vinyl, includes rear quarter vent windows (Limited Wagon)
Steering column - Tilt-Wheel™
Stripes - body-side (Custom)
Tailgate release - electric (Wagon)
Trunk release - electric (Sedan)
Transmission - 4-speed automatic with overdrive (V6 must be ordered)
Wheels - 14" x 5.5" aluminum
Wheels - 14" x 5.5" styled steel (N/A Limited Wagon)
Wheel covers - 14" custom locking wire
Windows - power
Window washer/wiper - tailgate (Wagon - deletes optional air deflector)
Windshield wipers - 2-speed with low-speed delay feature
Woodgrain vinyl appliqué - includes door edge guards (Wagon)

S - Standard equipment
A - Available equipment
• Included in Preferred Equipment Group



▲ Control, comfort, easy to read - easy to use - are the guiding principles behind the design of the Century instrument panel. Shown here with the available steering-wheel-mounted radio controls and Delco compact disc player.

POWERTRAIN & CHASSIS/DIMENSIONS

POWERTRAIN & CHASSIS

Engines	
Model, type; Custom Limited	2.5L TECH IV EFI I4
Horsepower	110 @ 5200 RPM
Torque - lb./ft.	135 @ 3200 RPM
Fuel management	electronic fuel injection (EFI)
Model, type; (available Custom, Limited)	3.3L 3300 MFI V6
Horsepower	160 @ 5200 RPM
Torque - lb./ft.	185 @ 2000 RPM
Fuel management	multi-port fuel injection (MFI)
Transmission;	
2.5L EFI I4	3-speed automatic
3.3L 3300 MFI V6	4-speed automatic with overdrive
Steering;	power, rack-and-pinion
Brakes;	power, front disc/rear drum
Suspension;	DynaRide, front independent/rear coil spring
Tires;	P185/75R-14 steel-belted, all-season whitewall
Wheels;	14" x 5.5" steel with deluxe wheel covers

DIMENSIONS mm (in.)

	Sedan	Wagon
Exterior		
Length	4803 (189.1)	4851 (190.9)
Width	1762 (69.4)	1762 (69.4)
Height	1377 (54.2)	1377 (54.2)
Wheelbase	2664 (104.9)	2664 (104.9)
Front tread	1492 (58.7)	1492 (58.7)
Rear tread	1442 (56.7)	1442 (56.7)
Interior, front/rear		
Leg room	1070/912 (42.1/35.9)	1068/885 (42.0/34.8)
Head room	980/965 (38.6/38.0)	980/987 (38.6/38.9)
Shoulder room	1427/1427 (56.2/56.2)	1427/1427 (56.2/56.2)
Hip room	1330/1338 (52.4/52.7)	1330/1338 (52.4/52.7)
Capacity		
Passengers	6	6,8
Trunk, L (cu.ft.)	460 (16.2)	
Fuel tank, L (gal.)	59 (13.0)	59 (13.0)
Curb weight, kg (lb.)		
Custom	1319 (2,908)	1386 (3,055)
Limited	1318 (2,906)	1390 (3,064)



▲ Elegant is a quality word to describe this mid-size Century Limited Wagon shown with available woodgrain vinyl appliqué. 6- or 8-passenger versions. With the rear seats down, haul up to 2106 litres/74.4 cubic feet of cargo. Optional V6 power.

WAGON CARGO AREA DIMENSIONS mm (in.)

Cargo volume, rear of 2nd seat with flat floor	1179L (41.6 cu.ft.)
Cargo volume, from back of front-seat with flat floor	2106L (74.4 cu.ft.)
Floor length from back of 2nd seat to end of floor surface	1152 (45.4)
Floor length from back of front-seat to end of floor surface	1914 (75.4)
Minimum distance between wheelhousings at floor level	930 (36.6)
Rear-end opening width at belt	1255 (49.4)
Maximum cargo height	803 (31.6)

EXTERIOR COLOURS

40 - Arctic White	74 - Flame Red Metallic	78 - Dark Maple Red Metallic
55 - Chamois	67 - Light Camel Metallic	18 - Dark Jadestone Metallic
22 - Ice Blue Metallic	28 - Midnight Blue Metallic	13 - Sterling Silver Metallic
15 - Slate Gray Metallic		

NOTE: See your sales representative for available interior trim colour selection.



The all-new Roadmaster Sedan displays a new level of dignity and style. The classic name in premium Buicks is an unmistakable full-frame full-size rear-wheel drive sedan that offers a powerful 5.7 litre fuel-injected 180 HP V8. Smooth, mannerly DynaRide suspension cushions the

ROADMASTER

ride. For many drivers, it is still their favourite way to put a lot of solid power on the pavement. And, when compared to other competitor's sedans, Roadmaster is a lot of solid luxury for the price. Roadmaster Sedan. Buick quality, style and stateliness is yours to command.



◀ A driver-side air bag is standard, and so is an anti-lock braking system (ABS) which brings Roadmaster to a measured halt – greatly reducing instances of wheel lockup and loss of steering control.

▼ 6-passenger Buick Roadmaster Limited Sedan shown with special self-sealing whitewall tires.





ROADMASTER



Buick engineers have taken Roadmaster's classic values and blended them with proven modern automotive technology. The results – variable-effort steering on the Limited that makes parking and low-speed manoeuvres easier, highway cruising steadier.

Superlative appointments on both sedans are anti-lock brakes, easy-to-read analogue instrumentation with a tachometer, comfortable cloth-covered divided front

seats, power windows with driver-side "express-down" feature, air conditioning and cruise control. Limited's premium equipment includes a Tilt-Wheel™ adjustable steering column and power operated front seating with electric reclining seatbacks, lumbar support, and split-frame seat construction. The seat cushion will adjust independently of the seatback.

Roadmaster by Buick – consistent quality.

▼ Roadmaster Limited interior shown in available ultra soft leather in seating areas. Limited's head restraints are capable of adjusting 6 ways.



◀ While Roadmaster Sedan passengers have more than ample interior space, there's a big 59.7L/21.1 cu.ft. of trunk space in the rear. One of the largest in the industry.





ROADMASTER

Roadmaster Estate Wagon – it may be the most luxurious 8-passenger wagon in the world.

Now you can experience full-frame security, solid 5.7 litre V8 power, safety anti-lock brakes, driver-side air bag, reclining divided front seats and rear-door child-security latches.

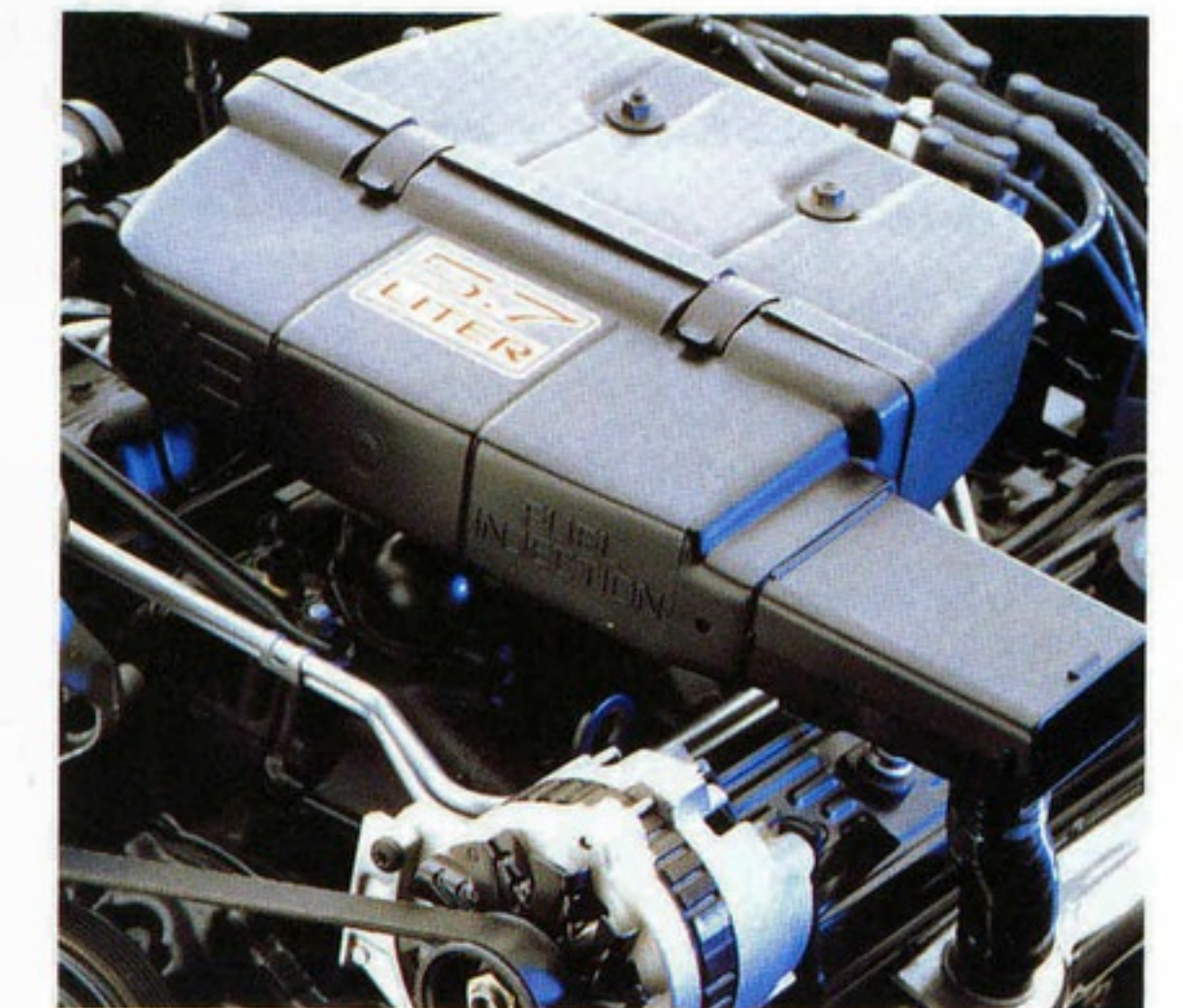
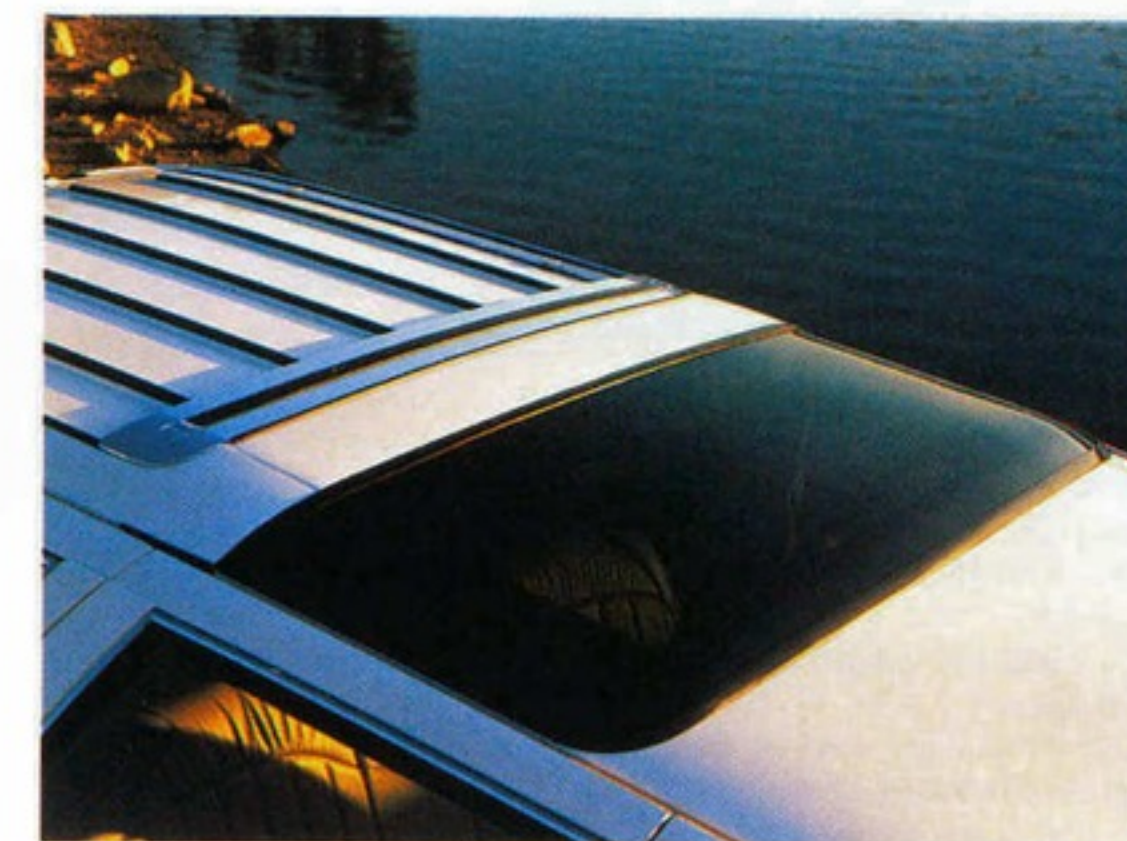
And this beautifully sculpted Buick wagon – with four times the cargo space of a full-size sedan – can tow up to 2268 kg/5,000 lb. – properly equipped.

Roadmaster Estate Wagon – the ultimate quality wagon.



▲ Roadmaster Estate Wagon – available with or without the warm woodgrain appliqué (shown).

◀ Roadmaster Estate Wagon shown with available genuine leather seating areas. With both rear-seats folded flat, maximum cargo space becomes 2616L/92.4 cu.ft.



▲ The muscular 5.7 litre V8 with dependable electronic fuel injection produces 180 HP at 4200 RPM. From the manifold rearward is a long-life, stainless steel exhaust system.

◀ The tinted Vista roof panel provides mid-section passengers a skylight look at the world above. An available Vista cover can control just the amount of sky you want to see.

FEATURES AND OPTIONS

ROADMASTER, ROADMASTER LIMITED AND ROADMASTER ESTATE

MODEL AVAILABILITY	Sedan	Wagon
Roadmaster	■	■
Limited	■	

STANDARD AND AVAILABLE EQUIPMENT	ROADMASTER	LIMITED	ESTATE WAGON
	▼	▼	▼

Air bag – driver-side Supplemental Inflatable Restraint (SIR) system	S	S	S
Air conditioning	S		S
Air conditioning – electronic Climate Control	A	S	A
Antenna – automatic, power	A	S	A
Armrest – front-seat, centre folding with storage	S	S	A
Armrest – rear-seat, centre-folding	S	S	
Body panels – galvanized two-sided steel, except roof	S	S	S
Brake/transmission shift interlock	S	S	S
Carpet savers – front and rear, front snap-down	S	S	A
Convenience net	S	S	S
Cruise control – electronic	S	S	A
Defogger – electric rear-window	S	S	S
Door locks – electric	S		S
Door locks – automatic, electric	A	S	A
Door lock releases – tailgate and tailgate latch			S
Electronic warning tone – ignition key, turn signal and headlamps on reminder	S	S	S
Exhaust system – stainless steel	S	S	S
Glass – Soft-Ray tinted	S	S	S
Headlamp control – Daytime Running Lamps with Twilight Sentinel	S	S	S
Indicators – low fluid levels	S	S	S
Instrumentation – analogue cluster with tachometer	S	S	S
Keyless entry – remote control	A	S	A
Lights – trunk, engine compartment and under dash	S	S	
Locks – rear-door security latch	S	S	S
Luggage rack – integral with Vista roof			S
Mirrors – outside, left remote/right manual	S		S
Mirrors – outside, electric, left and right remote, left heated	A	S	A
Mirror – inside, day/night with dual reading lamps and compass	A	S	A
Mirrors – covered visor vanity, driver and passenger	S		S
Mirrors – lighted visor vanity, driver and passenger	A	S	A
Radio – ETR AM/FM stereo with 4-speaker system	S		S
Radio – ETR AM/FM stereo with cassette tape player and 4-speaker system	A	S	A
Seats – cloth, 55/45 divided front with seatback pockets	S		S
Seats – cloth, 55/45 divided front with power lumbar support with seatback pockets		S	
Seats – 6-way power, driver and passenger	A	S	A
Seat recliners – manual, driver and passenger	S		
Seat recliners – power, driver and passenger		S	S
Seat – third, rear-facing vinyl, includes rear quarter vent windows			S
Steering column – Tilt-Wheel™	S	S	S
Storage – lockable load area, side and floor			S
Trunk release – electric	S	S	
Vista roof – with solar control tinted glass			S
Windows – power with driver “express-down” feature	S	S	S
Windshield wipers – 2-speed with low-speed delay feature	S	S	S
Window washer/wiper – tailgate			S
Woodgrain vinyl appliqué			S



PREFERRED EQUIPMENT GROUPS:

To help simplify the buying process, the 1992 Roadmasters have optional Preferred Equipment Groups (P.E.G.'s). Choose the equipment group you desire, then select from the accompanying list of individual options. Some restrictions apply. See your sales representative for details.

MODELS P.E.G. ORDERING CODE	ROADMASTER ISD	LIMITED ISE	ESTATE WAGON ISC	ISD	ISE
Armrest – front-seat, centre folding with storage	S	S	S	•	•
Carpet savers – front and rear, front snap-down	S	S	S	•	•
Cruise control – electronic	S	S	S	•	•
Antenna – automatic, power	•	•	S	•	•
Mirrors – lighted visor vanity, driver and passenger	•	•	S	•	•
Radio – ETR AM/FM stereo with cassette tape player	•	•	S	•	•
Seat – 6-way power, driver	•	•	S	•	•
Seat recliner – power, passenger	•	•	S	S	S
Air conditioning – electronic Climate Control		•	S	•	•
Door locks – automatic, electric		•	S	•	•
Keyless entry – remote control		•	S	•	•
Lights – door courtesy		•	S	•	•
Mirrors – outside, electric, left and right remote, left heated		•	S	•	•
Mirror – inside, day/night with dual reading lamps and compass		•	S	•	•
Seat – 6-way power, passenger		•	S	•	•
Security cover – cargo area				•	•
Cornering lamps			•		•
Steering wheel – leather-wrapped			•		
Tires – P235/70R-15 steel-belted, all-season, self-sealing whitewall			•		
Trunk release – electric, remote control with pull-down feature			•		

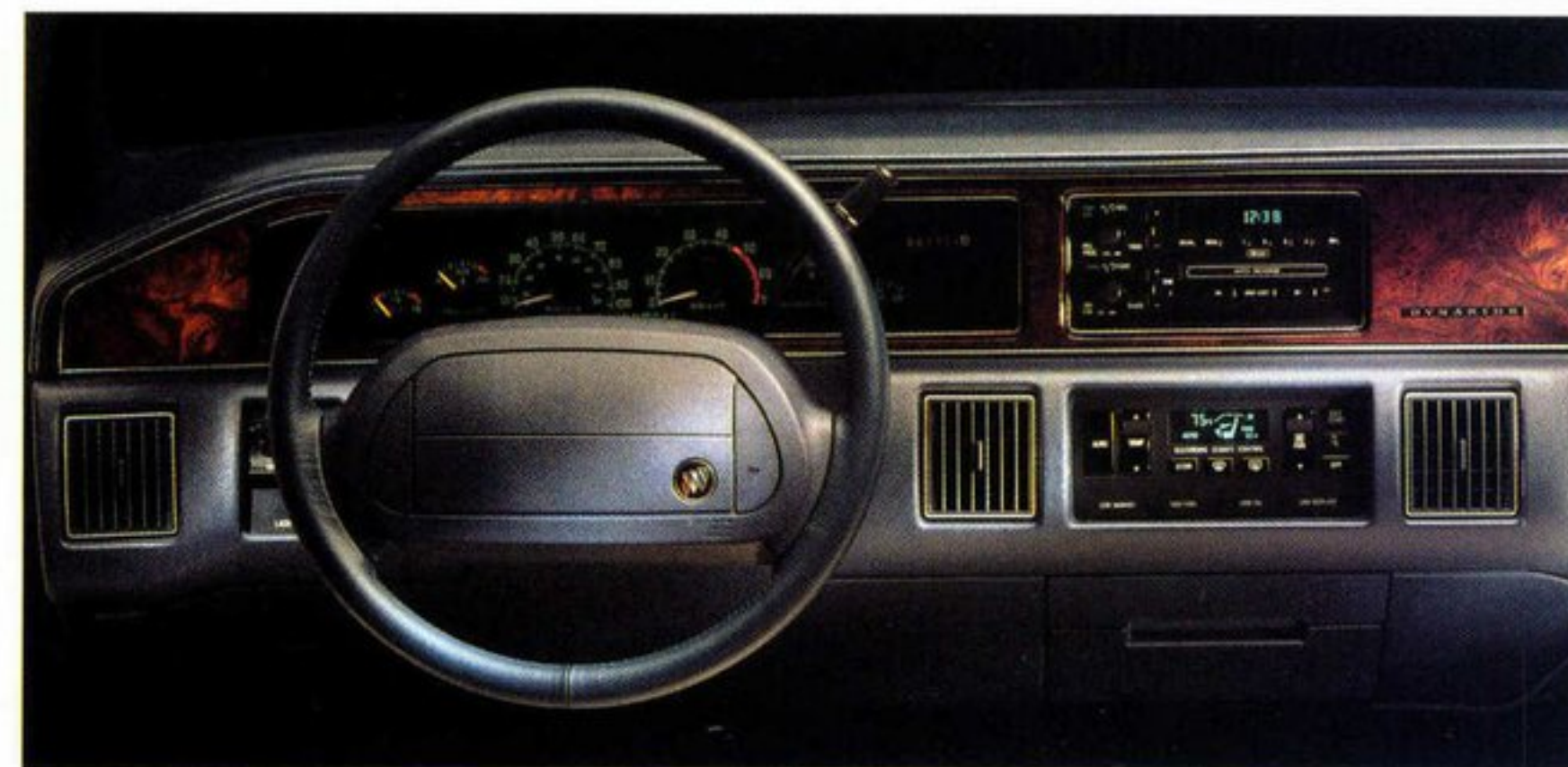
INDIVIDUAL OPTIONS:

The following individual options may be ordered. Some restrictions apply. See your sales representative for details.

Axle ratio – specific (Estate)
Cooling system – heavy-duty engine (Estate)
Limited slip differential
Radio – ETR AM/FM stereo with cassette tape player (Roadmaster)
Radio – ETR AM stereo/FM stereo with cassette tape player and graphic equalizer
Radio – ETR AM stereo/FM stereo with compact disc player and graphic equalizer
Roof cover – Landau vinyl top (Sedans)
Seats – Sierra leather seating areas
Seat – third, rear-facing, delete, credit option (Estate)



▲ Compass features an LCD readout (black translucent characters) that is integrated in upper right corner of rearview mirror with dual reading lamps.



▼ Roadmaster's 5.7 litre V8 provides smooth proven towing power for this reborn North American classic. The available Trailer Provisions package is a wise investment.



INDIVIDUAL OPTIONS (CONT'D.)

Spare tire – full-size
Suspension – automatic rear level control (Estate)
Tires – P235/70R-15 steel-belted, all-season, self-sealing whitewall (Roadmaster)
Trailer Towing Package – 2268 kg/5,000 lb. capacity
Vista roof cover – interior panel (Estate)
Wheel covers – 15" custom locking wire
Windshield – solar control
Woodgrain vinyl appliqué – delete, credit option (Estate)

S – Standard equipment
A – Available equipment
• Included in Preferred Equipment Group

POWERTRAIN & CHASSIS/DIMENSIONS

POWERTRAIN & CHASSIS

Engine –	
Model, type;	5.7L EFI V8
Horsepower	180 @ 4200 RPM
Torque – lb./ft.	290 @ 2400 RPM
Fuel management	electronic fuel injection (EFI)
Transmission;	4-speed automatic with overdrive
Steering;	
Roadmaster, Estate	power, recirculating ball
Limited	power, variable effort recirculating ball
Brakes;	power, front disc/rear drum with anti-lock system (ABS)
Suspension;	
Roadmaster, Limited	DynaRide, front independent/rear coil spring
Estate	heavy-duty, front independent/rear coil spring
Tires;	
Estate	P225/70R-15 steel-belted, all-season whitewall
Roadmaster, Limited	P235/70R-15 steel-belted, all-season whitewall
Wheels;	
Roadmaster, Limited	15" x 7" steel with deluxe wheel covers
Estate	15" x 7" aluminum

▲ Complete information, quickly, is what the easy-to-read Roadmaster analogue instrument panel has to offer. Includes gauges for oil, coolant temperature, volts, trip odometer and tachometer.

DIMENSIONS mm (in.)

Exterior	Sedan	Wagon
Length	5483 (215.8)	5526 (217.6)
Width	1984 (78.1)	2028 (79.9)
Height	1445 (56.9)	1531 (60.3)
Wheelbase	2945 (115.9)	2945 (115.9)
Front tread	1568 (61.8)	1578 (62.1)
Rear tread	1542 (60.7)	1628 (64.1)
Interior, front/rear		
Leg room	1072/1002 (42.2/39.5)	1072/964 (42.2/38.0)
Head room	995/984 (39.2/38.8)	1009/1006 (39.7/39.6)
Shoulder room	1610/1610 (63.4/63.4)	1610/1612 (63.4/63.5)
Hip room	1448/1445 (57.0/56.9)	1446/1451 (56.9/57.1)
Capacity		
Passenger	6	8,6
Trunk, L (cu.ft.)	597 (21.1)	
Fuel tank, L (gal.)	87 (19.2)	83 (18.3)
Curb weight, kg (lb.)		
Roadmaster	1823 (4,019)	2003 (4,415)
Limited	1846 (4,070)	

ESTATE WAGON CARGO AREA DIMENSIONS mm (in.)

Cargo volume, rear of 2nd seat with flat floor	1550L (54.7 cu.ft.)
Cargo volume, from back of front-seat with flat floor	2616L (92.4 cu.ft.)
Floor length from rear of 2nd seat to end of floor surface	1396 (55.0)
Floor length from back of front-seat to end of floor surface	2266 (89.2)
Minimum distance between wheelhousings at floor level	1238 (48.7)
Rear-end opening width at belt	1331 (52.4)
Maximum cargo height	759 (29.9)

EXTERIOR COLOURS

40 – Arctic White	78 – Dark Maple Red Metallic	55 – Chamois ¹
67 – Light Camel Metallic	18 – Dark Jadestone Metallic ¹	22 – Ice Blue Metallic
28 – Midnight Blue Metallic	13 – Sterling Silver Metallic ¹	87 – Pewter Gray Metallic
41 – Black ¹		

¹Not available on Estate Wagon.

NOTE: See your sales representative for available interior trim colour selection.

ADDITIONAL INFORMATION

SAFETY FEATURES

Occupant Protection:

Supplemental Inflatable Restraint, driver only (Riviera, Park Avenue, Roadmaster and LeSabre) with manual lap/shoulder safety belts for driver and right front passenger; both including visual and audible warning system • Manual lap/shoulder safety belts, outboard rear-seat positions • Manual lap safety belts, centre front-/rear-seat positions, where applicable • Child restraint seat tether anchorages and hardware • Energy-absorbing steering column • Energy-absorbing instrument panel • Energy-absorbing seat-back tops, front • Interlocking door latches • Laminated windshield glass with urethane bonding • Side-guard door beams • Passenger-guard inside door lock handles • Inertia-locking, folding front seatbacks, two-door models • Safety armrests • Head restraints, driver and right front passenger (adjustable) • Break-away inside rearview mirror • Security door locks and door retention components • 8 kph (5 mph) bumpers, front and rear

Accident Avoidance:

Automatic Daytime Running Lamps • Side marker lamps and reflectors • Parking lamps that illuminate with headlamps • Four-way hazard warning flashers • Backup lamps • Centre high-mounted stop lamp • Directional signal control with lane change feature (turn signal lamp) • Windshield defogger, washer and multi-speed wipers • Inside manual day/night rearview mirror, where applicable • Outside left and right rearview mirrors • Brake system with dual master cylinder and warning light • Starter safety switch • Dual-action hood latch system (front opening hood vehicles) • Low-glare finish on inside windshield mouldings,

wiper arms and blades, metallic steering wheel surfaces • Illuminated heater and defroster controls • Illuminated windshield wiper and washer controls (when located on instrument panel) • Tires with built-in tread-wear indicators.

Theft Deterrence:

Audible reminder for ignition key removal • Theft-deterrent steering column lock • Visible vehicle identification number • PASS-Key (Personalized Automotive Security System) standard on Riviera, Park Avenue and LeSabre • Theft-deterrent key system

For your protection
GENERAL MOTORS
stands behind your new GM car with the new for 1992 GM
TOTAL™ WARRANTY
3 years/60,000 km* NO DEDUCTIBLE.

COVERAGES	0-12 Mo./ 20,000 km*	3 Yr./ 60,000 km*	5 Yr./ 80,000 km*	5 Yr./ 160,000 km*	6 Yr./ 160,000 km*
New Vehicle Limited Warranty					
Complete vehicle					
Tires (3 years or 60,000 kilometres OR normal replacement)*					
Battery					
Battery (3 years regardless of kilometres) – pro rata adjusted price					
Supplemental Inflatable Restraint system (3 years, regardless of kilometres)					
Emission Control Systems					
Corrosion (rust-through)					

* Whichever comes first.

The warranty coverages on your vehicle are summarized above. The Warranty and Owner Assistance Information booklet supplied with the vehicle will provide complete details of specific warranty coverages.

Ask your Buick dealer
for complete details.

(separate ignition key) • Remote inside
hood release

A WORD ABOUT CORROSION PROTECTION

Your 1992 GM passenger car was designed and built to resist corrosion. All body sheet metal components are warranted against rust-through from corrosion for 6-years/160,000 kilometres (whichever comes first). Application of additional rust-inhibiting materials is not required under

the corrosion coverage. For more details on this specific warranty, ask your Buick sales representative.

GM PROTECTION PLAN TOTAL 'PLUS'

Why not take a good thing and make it better. Your GM TOTAL™ Warranty provides superb coverage. The available GM Protection Plan Total Plus™ is just more of a good thing. There are many extended service contracts available on the market today, but there is only ONE that comes from General Motors. The General Motors Protection Plan is part of the GM family and provides coverage for up to 6 years or 150,000 kilometres (whichever comes first).

The GM Protection Plan provides additional protection during and after the new vehicle limited warranties. Ask your Buick sales representative for details and information about the genuine GM Protection Plan.

GMAC

All your financing conveniently handled under one roof. The good feeling that comes when you buy a new Buick can be enhanced when it comes to making financial arrangements. Which is why so many people finance with General Motors Acceptance Corporation. With GMAC it's done right in the showroom.

Terms are tailor-made to suit your personal needs. You can choose your own monthly payment date. And the rates are as friendly as can be.

So when the time comes, just tell us 'I want GMAC'. We'll take it from there while you relax.

SMARTLEASE

If you'd rather not tie up a lot of your cash by purchasing a new vehicle, then leasing is for you. By leasing, you free up your cash so you can spend it on other priorities. Here's how:

1. NO BANK LOAN. Because you're not buying the vehicle – you're leasing it – it's not necessary to borrow money.

2. NO LARGE DOWN PAYMENT. When you lease, you're paying only the first month's instalment, plus an administration fee and a security deposit. On approved credit.

3. NO HIGH MONTHLY PAYMENTS.

SmartLease payments are based on that portion of your vehicle's value that you use during the lease period. Paying for only a portion of the value can help keep your payments low.

4. NO RESALE WORRIES. At the end of your lease, just return your car to your Buick dealer. You may have the option of buying it, or you can take a lease out on another brand new Buick.

GM SMARTLEASE. THE SMART ALTERNATIVE TO BUYING.

For more information about SmartLease please call this toll-free nationwide telephone number: 1-800-GM DRIVE or see your Buick sales representative for complete details.

A WORD ABOUT ENGINES

Buicks are equipped with engines produced by different operating units of General Motors, its subsidiaries or suppliers to GM worldwide.

TRAILER TOWING

Check with your Buick sales representative for Trailer Towing recommendations.

A WORD ABOUT THIS BROCHURE

The vehicles described in this brochure incorporate components produced by General Motors of Canada Limited and related companies and suppliers. During manufacturing, different components than initially scheduled may be used.

All illustrations and specifications contained in this brochure are based on the latest production information at the time of publication approval. The right is reserved to make changes at any time, without notice, in prices, colours, materials, equipment, specifications and models, and to discontinue models. Some of the equipment shown or described throughout this brochure is avail-

able at extra cost or can only be ordered in conjunction with the other optional equipment. Some options may not be available when your vehicle is built. Since some information may have been updated since the time of printing, please check with your Buick sales representative for complete information.

Note: Instruments shown throughout this brochure are metric in Canada. Vehicles in Canada are equipped with automatic Day-time Running Lamps. Front seat belt system illustrated in this brochure differs in Canada.



General Motors, GM, the GM emblem, BUICK, the BUICK emblem, SKYLARK, CENTURY, REGAL, LESABRE, PARK AVENUE, ROADMASTER, RIVIERA, DELCO ETR, PASS-Key, TECH IV, DYNARIDE, TILT-WHEEL and the TOTAL Warranty are all trademarks of General Motors Corporation and/or General Motors of Canada Limited. GMAC and SMARTLEASE are trademarks of General Motors Acceptance Corporation.

Printed in Canada, August, 1991

© 1991, General Motors of Canada Limited

CONTRIBUTING TO A CLEANER CANADA

As the largest automotive manufacturer in Canada, we share the objective of ensuring cleaner land, water and air for future generations. General Motors of Canada Limited is committed to sustainable development with product enhancements and plant improvements to achieve further reductions in emissions.

GM has reduced emissions of pollutants from cars that cause urban smog by 90% on average from uncontrolled levels. As newer cars replace older ones on our roads, we expect to see a significant drop in overall emissions from motor vehicles. In fact, motor vehicles are the only major source of the pollutants that contribute to urban smog that are projected by the Canadian government to decline over the next fifteen years.

The fuel efficiency of our new car fleet has more than doubled since the mid-1970's, and GM now sells the most fuel efficient cars in Canada.

We were the first automotive manufacturer to mandate a CFC recovery and recycling program for all GM dealerships in Canada that service vehicle air conditioners, and we will begin eliminating CFCs from our cars and trucks in the Fall of 1992.

Research into alternative fuels is an important priority at GM.

We are participating in a demonstration program of variable fueled methanol vehicles in Canada to test this fuel. And GM engineers and research scientists are investigating other fuels such as natural gas, ethanol and solar power. We were the first auto manufacturer to announce that we would produce an electric car for North America in the mid-1990's.

We are continuing to pursue new technologies and new products to enhance our environmental commitment. **You can help, too. Always use oxygenated fuels as recommended in the owner's manual. Have your vehicle serviced regularly to ensure that it is in top running order. Maintain your tires at the recommended pressure. If each one of us takes these small steps, the overall result will be a cleaner Canada.**



121-2-B-002

