

REGAL

BUICK 1986





REGAL



Regal is the sum of the meticulously assembled parts. This is an automobile that is every inch a Buick. A car that rides, performs, and handles with all the qualities of grace and elegance that have come to characterize the Regal.

Buick's sinewy, efficient 3.8-litre V-6 with automatic transmission is standard on Regal. Drivers who retain an affection for V-8 power can select the strong, smooth-running 5.0-litre V-8 and automatic overdrive transmission from the available equipment list, a combination favored by many Regal owners.

All Regals have power-steering and power-assisted low-drag front disc/rear drum brakes for positive steering and stopping. Computer-selected springs for the coil spring suspension bring outstanding ride and handling to the package. Also standard on the Regal are P195/75R14 whitewall, steel-belted radial-ply tires.

The Regal T Type (top left) distinguishes itself at first glance by blackout trim around the grille, windows and headlights and a special, stylish taillight treatment. Large, lower-profile, steel-belted radials (P215/65R15) gives the T Type a positive, aggressive stance.

The Regal T Type moves on a special Gran Touring suspension including a rear stabilizer bar, a large-diameter front stabilizer bar and higher-rate springs and shock absorbers. A 3.42:1 rear-axle ratio and low-ratio power steering completes the T Type's running gear. The result is a car that can cope with anything the road places in its path. Surely, quickly, and with a large dash of style.

The Buick Regal and the more luxurious Regal Limited (far left) represent personal luxury cars at their finest; automobiles that have about them not only the air of luxury, but the *reality* of luxury. The Regal T Type, however, gives the luxury an impressive overlay of high performance.



REGAL

Three versions of this immensely popular Buick are available for your consideration: the Regal, Regal Limited, and Regal T Type, a car equipped and intended for the true enthusiast. In addition, an unusual performance version called the Regal Grand National (bottom left) will be available to very few, very special drivers.

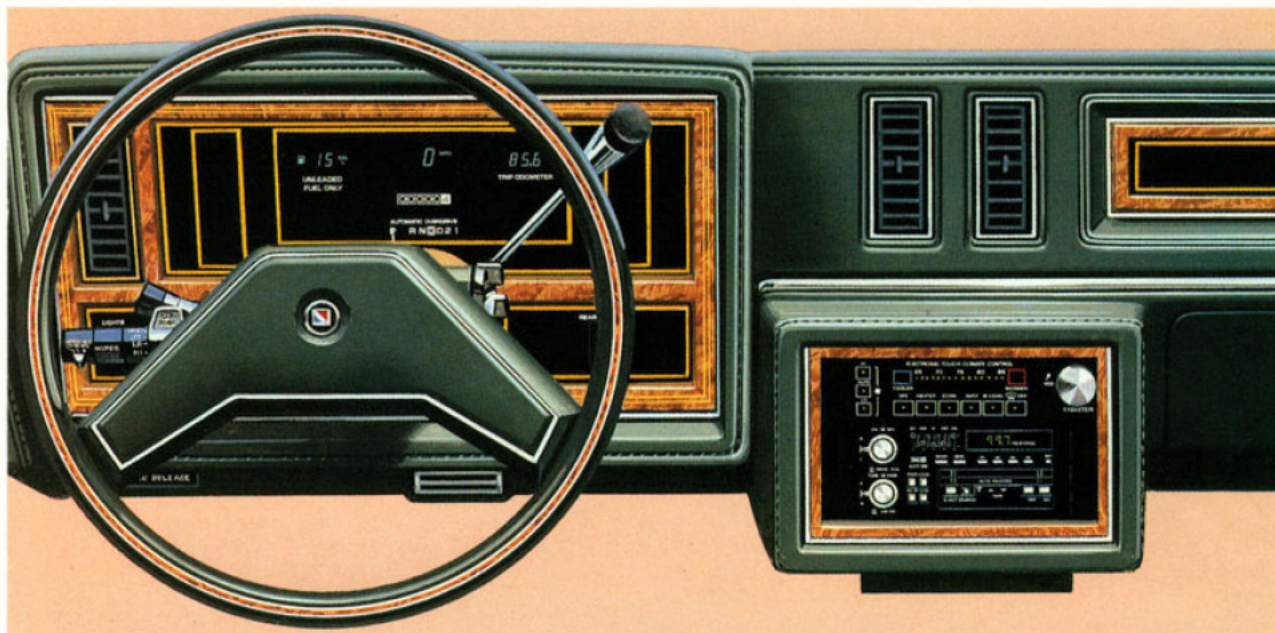
The Regal Grand National takes the T Type one step beyond. With a businesslike, all-black exterior nearly devoid of chrome, four highly styled chrome-plated steel wheels, a firm-ride Gran Touring suspension and two-tone cloth bucket seats, the Grand National is a street machine for those who want to stand apart from the crowd. It is, as an advertisement suggests, "Bad to the Bone".

The Grand National is powered by Buick's most advanced high-performance engine, the 3.8-litre V-6 with sequential-port fuel injection plus turbocharger and intercooler—an engine designed to perform. (The same engine is standard on the T Type).

The Regal and Regal Limited offer a comfortable, luxurious interior with a standard notchback bench seat or 55/45 notchback seats (Limited 55/45 right), respectively, or available bucket seats. A broad range of colours and materials widens the interior choice. The Limited offers an available 45/45 leather-trimmed seat. Door upholstery panels match your seating choice.

Adding to Regal's already high standard of luxury simplicity itself, for there's a long list of available comfort and convenience features. Air conditioning (standard on T Type), electronic digital instrumentation, Electronic Touch Climate Control, Electronic Cruise Control, and six-way power seats, are just a few of the items available.

The Regal, Regal Limited, Regal T Type and Regal Grand National are four very exciting personal Buicks. There's every likelihood that you'll find one of them well-nigh irresistible.



1986 REGAL FACTS & FIGURES



DIMENSIONS

	COUPE	
	mm	In.
Wheelbase	2746	108.1
Overall Length	5094	200.6
Overall Width	1790	70.5
Height	1386	54.6
Tread, Front/Rear	1486/1466	58.5/57.7
Headroom, Front/Rear	962/967	37.9/38.1
Legroom, Front/Rear	1086/924	42.8/36.4
Shoulder Room, Front/Rear	1445/1425	56.9/56.1
Hiproom, Front/Rear	1313/1394	51.7/54.9
Usable Luggage Cap.	485 litres	16.2 cu. ft.
Fuel Tank	68.5 litres	15.0 gal.

STANDARD FEATURES ON ALL BUICKS

SAFETY FEATURES

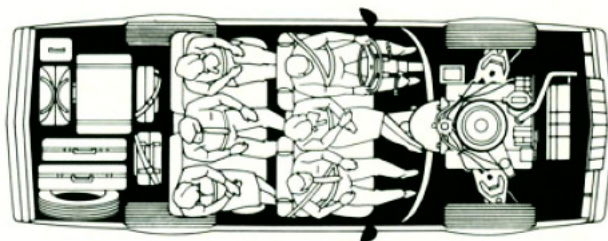
OCCUPANT PROTECTION • Manual lap/shoulder belts for driver and right front passenger (driver side includes visual and audible warning system) • Manual lap belts at each rear seat position, (and centre front, when applicable) • Energy absorbing steering column • Energy absorbing instrument panel • Energy absorbing front seatback tops • Laminated safety windshield glass and tempered safety side and rear window glass • Safety interlocking door latches • Passenger-guard inside door lock handles • Inertia-locking, folding front seat backs • Safety armrests • Head restraints, driver and right front pass. (adjustable/integral) • Dual sun visors • Smooth contoured door and window regulator handles • Pressure lock radiator cap.

ACCIDENT AVOIDANCE • Side marker lights and reflectors • Parking lamps that illuminate with headlamps • Four-way hazard warning flasher • Back-up lights • High-mounted stop lamps • Directional signal control (and lane change feature) • Windshield defroster, washer and dual speed wipers • Inside rearview mirror with vinyl-bonded glass • Outside left rearview mirror • Brake system with dual master cylinder and warning light • Starter safety switch • Dual action hood latch system (except rear opening Electra and LeSabre) • Low glare finish on instrument panel top, inside windshield mouldings, wiper arms/blades, metallic steering wheel surfaces • Illuminated heater and defroster controls • Illuminated windshield wiper and washer controls (if on I/P) • Tires with built-in tread-wear indicators • Safety road wheel rims • Audible brake lining wear indicators, all disc brakes • Self-adjusting brake feature • Pressure relief fuel cap • Rear window defogger.

THEFT DETERRENCE • Audible reminder for ignition key removal • Theft deterrent steering column lock • Visible vehicle identification number • Remote inside hood release • Theft deterrent key system (separate key for ignition).

MODEL LINEUP

Regal—2-Door Coupe
Regal T Type—2-Door Coupe
Regal Limited—2-Door Coupe



A word about engines

These Buicks are equipped with GM-built engines produced by various divisions and affiliates of General Motors Corporation and GM of Canada.

Order Code	Displacement	Carb. bbl.	Cyl.	†V.I.N.	*Source	Transmission
LD5	3.8 litre (231 CID)	2	V6	A	(1)	Automatic
LG4	5.0 litre (305 CID)	4	V8	H	(2) (3)	O.D. Automatic
LC2	3.8 litre (231 CID) Turbo	SFI	V6	9	(1)	O.D. Automatic

*Produced by GM (1) Buick Division USA (2) Chevrolet Division USA (3) GM of Canada

†The V.I.N. (Vehicle Identification Number) Engine Code is the eighth entry (letter or numeral) from the left on the vehicle serial number plate. The vehicle serial number plate is located on the top portion of the driver's side of the instrument panel and can be viewed from the exterior of the car by looking through the windshield.

Select the combination of "extras" that make your Buick uniquely yours from the long list of standard and available features, some of which are given below. Ask your dealer about group packages and the many other features not indicated below. Your dealer will also advise you of the availability of the various items on the model of your choice.

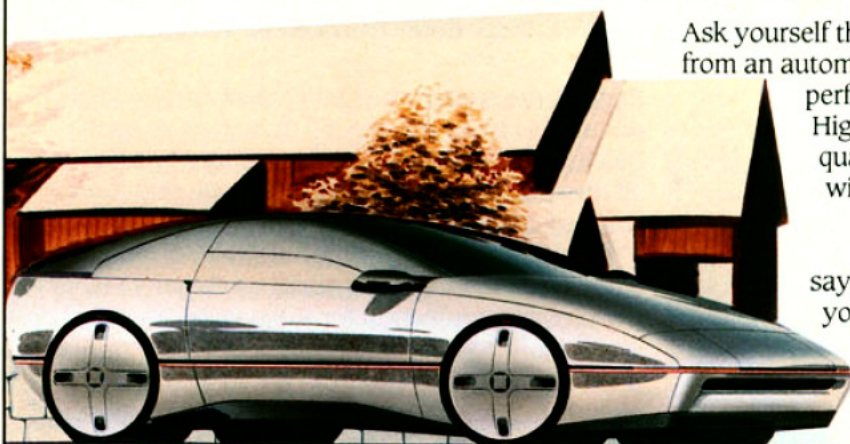
	Regal	Regal T Type	Regal Limited
Engines—3.8 litre V6	S	—	S
3.8 litre V6 Turbo	—	S	—
5.0 litre V8	A	—	A
Transmissions—Automatic	S	—	S
Overdrive Automatic	A	S	A
Brakes—Power Front Disc/Rear Drum	S	S	S
Steering—Power	S	S	S
Tires—195/75R x 14 Radial (White)	S	—	S
205/70R x 14 Radial (White)	A	—	A
215/65R x 15 Radial (Black)	—	S	—
(White lettered)	—	A	—
Self-Sealing Tires	A	—	A
Firm Ride & Handling Suspension	A	—	A
Gran Touring Suspension	A	S	A

	Regal	Regal T Type	Regal Limited
Cruise Control	A	A	A
Seats—55/45 Divided	A	A	S
45/45 Divided	A	A	A
Notchback	S	S	—
Bucket Reclining	A	A	—
Reclining Pass. Side Only	A	A	A
Tilt Steering	A	A	A
Mouldings—Rocker	S	—	—
Roof Drip	S	S	S
Belt Reveal	A	S	S
Wheel Openings	S	S	S
Wide Rocker	A	—	S
Bodyside	S	A	S
Power—Seats 6-way	A	A	A
Door Locks	A	A	A
Deck Release	A	A	A
Windows	A	A	A
Wheels—Deluxe Covers	S	—	S
Wire Covers	A	—	A
Chrome Wheels	A	—	A
Aluminum Wheels	A	S	A
Luggage Compartment Trim	A	A	A
Air Conditioning—Manual	A	S	A
Automatic	A	A	A
Rear Window Defroster	S	S	S
Roof—Landau	A	—	A
Sunroof	A	A	A
Hatchroof	A	A	A
Glass—Soft-Ray Tinted	A	A	A
Theft Deterrent System	A	A	A
Twilight Sentinel	A	A	A
Tungsten Halogen Headlamps	A	A	A
Digital Electronic Instrument Cluster	A	—	A
Radio—AM	S	S	S
AM/FM Stereo	A	A	A
AM Stereo/FM Stereo	A	A	A
AM/FM Stereo/Cassette	A	A	A
Antenna—Power	A	A	A
Cornering Lamps	A	—	A
Headlamps-on Indicator	A	A	A
Visor Vanity Mirror	A	A	A
Two-tone Paint	A	A	A
Bumper Protective Strips	S	S	S
Bumper Guards	S	S	S
Mirrors, Outside; Chrome	S	—	S
Sport	A	S	A
Acoustical Insulation Package	S	S	S
Colour-keyed Safety Belts	S	S	S
Side Frame Jacking System	S	S	S
Limited Slip Rear Axle	A	A	A
Carpet Savers	A	A	A
Heavy Duty Cooling	A	S	A
Engine Block Heater	A	A	A
Door Courtesy and Warning Lamps	—	—	A
Sail Panel Reading Lamp	A	—	A
Variable Delay Windshield Wiper	A	A	A
Heavy Duty Generator	A	S	A

S-Standard A-Available (extra cost) —Not Available

Printed in Canada GM-4786

BUICK. ARTISTRY AND TECHNOLOGY IN HARMONY.



Ask yourself this question: "What do I really want from an automobile?" Do you want luxury? High performance? Economy? Space? Beauty? High technology? Do you want *all* these qualities? Chances are, if you're honest with yourself, you do.

Most drivers want all those things.

At Buick, honesty prevents us from saying to you, "Here are all the things you've ever wanted in a car." We can't deliver on that promise. No one can.

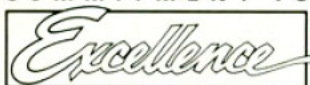
But what we can do is offer you a choice of finely crafted and engineered automobiles; invite you

to select from a full line of cars, each one of which is intended to satisfy a particular set of driver wants and needs.

The task of designing and building better Buicks is a job with no outer limits. A constant seeking of balance: comfort with agility, practicality with luxury, durability with style. And always, Buick's tradition of balancing artistry with technology.

This balance, and the constant search for it by dedicated engineers and designers, appears in every Buick built. It is a Buick component in which we take considerable pride, the ingredient that sets the cars on these pages apart. The quality that makes a Buick a Buick.

COMMITMENT TO



General Motors recognizes that taking delivery of your new vehicle is a significant event. To

ensure that your delivery experience contributes to your overall satisfaction, we have implemented a "Commitment to Excellence" Delivery Procedure.

This procedure includes a thorough new vehicle inspection by both the service technician and salesperson, a full tank of fuel, and a follow-up survey to determine your satisfaction with the delivery experience.

General Motors "Commitment to Excellence" is yet another excellent reason to "Look at GM Today."



Protection Plan

While there are many service contracts available on the market today, *there is only one which gives you an agreement directly with General Motors.* It is the one with the GM Protection Plan logo shown above. This logo on all Plan material assures you that the service contract you are buying is the GM Plan, we believe the finest such program available to GM owners.

The GM Protection Plan provides additional protection during and after the new vehicle limited warranties. Ask your General Motors dealer for details and information about the *genuine GM Protection Plan.*



5-year unlimited kilometres corrosion perforation warranty. On all 1986 GM passenger cars. Ask your dealer for details.

For Your Protection*

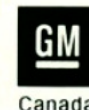
1. New Vehicle Limited Warranty – 12 months or 20,000 kilometres, whichever comes first.
2. Powertrain Coverage – 36 months or 60,000 kilometres, whichever comes first on gasoline engines (\$100 deductible).
3. Owner Assistance Program.
4. Special Policy Adjustment Program.

*Ask your dealer for details.

A WORD ABOUT THIS CATALOGUE

The vehicles described in this catalogue incorporate components produced by General Motors of Canada Limited and related companies and suppliers. During manufacturing, different components than initially scheduled may be used.

All illustrations and specifications contained in this catalogue are based on the latest product information at time of publication approval. The right is reserved to make changes at any time, without notice, in prices, colours, materials, equipment, specifications and models, and to discontinue models. Some of the equipment shown or described throughout this catalogue is available at extra cost or can only be ordered in conjunction with the other optional equipment. Some options may not be available when your vehicle is built. Check your dealer for complete information.



Official Supplier
to The 1986
World Exposition

