

# ELECTRA

BUICK 1986









## ELECTRA & PARK AVENUE

The Electra/Park Avenue for 1986 represents one of the finest luxury cars that we at Buick can bring to the marketplace. It is at once our benchmark and our hallmark, embodying as it does all those qualities that for so long have made the name Buick among the proudest in the automotive world.

The Park Avenue and the Electra are built and equipped with leading-edge technology, modern cars in every way. Among the advances in Electra design is front-wheel drive, a feature that allowed the car to be shortened considerably in 1985 with only a negligible decrease in interior spaciousness. The Electra maintains the Buick traditions of passenger comfort and pride of ownership.

The standard powertrain of the Electra and Park Avenue is a transverse-mounted 3.8-litre V-6 with sequential-port fuel injection coupled to a four-speed automatic transmission with overdrive, a combination that delivers truly thoroughbred performance.

The Buick Park Avenue (left), the most luxurious of Electras, and Electra (right) both present an appearance, within and without, characterized by a richness of look and feel that instantly communicates Buick's eight decades of experience in creating cars of comfort and luxury.





## ELECTRA T TYPE



We know of no better way to describe the Electra and Park Avenue than to say that we consider them the ultimate six-passenger Buicks. This is not a term applied lightly; it is a distinction well earned and richly deserved.

The Electra T Type (left) is luxury in a modern configuration, a car for the forward-thinking driver who asks that his luxury be accompanied by responsive, responsible performance. This has been accomplished without sacrificing one ounce of the enjoyment that the Electra experience has brought to over two generations of owners.

A grand touring sedan in every sense of the word, the Electra T Type is a unique Electra. Its performance-oriented 3.8-litre V-6 engine is equipped with sequential-port fuel injection (SFI), one of the most advanced, most efficient fuel-injection systems available: a system developed by Buick engineers with the aid of Bosch of Germany, world leaders in fuel-injection systems.

The T Type differs from other Electras, having a firmer suspension, quicker steering ratio and standard 15" aluminum wheels with Goodyear Eagle GT performance tires. Taken together, the T Type's subtle differences give the driver with a bit more experience—and an appreciation for the rewards of spirited driving—the opportunity of enjoying an Electra that can satisfy his demands. You will be pleased to learn that the Electra T Type accomplishes this with no dilution of the luxury expected from an Electra.

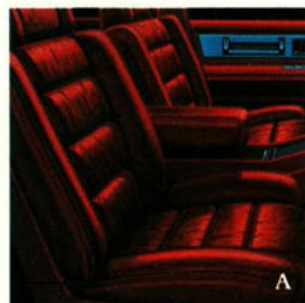
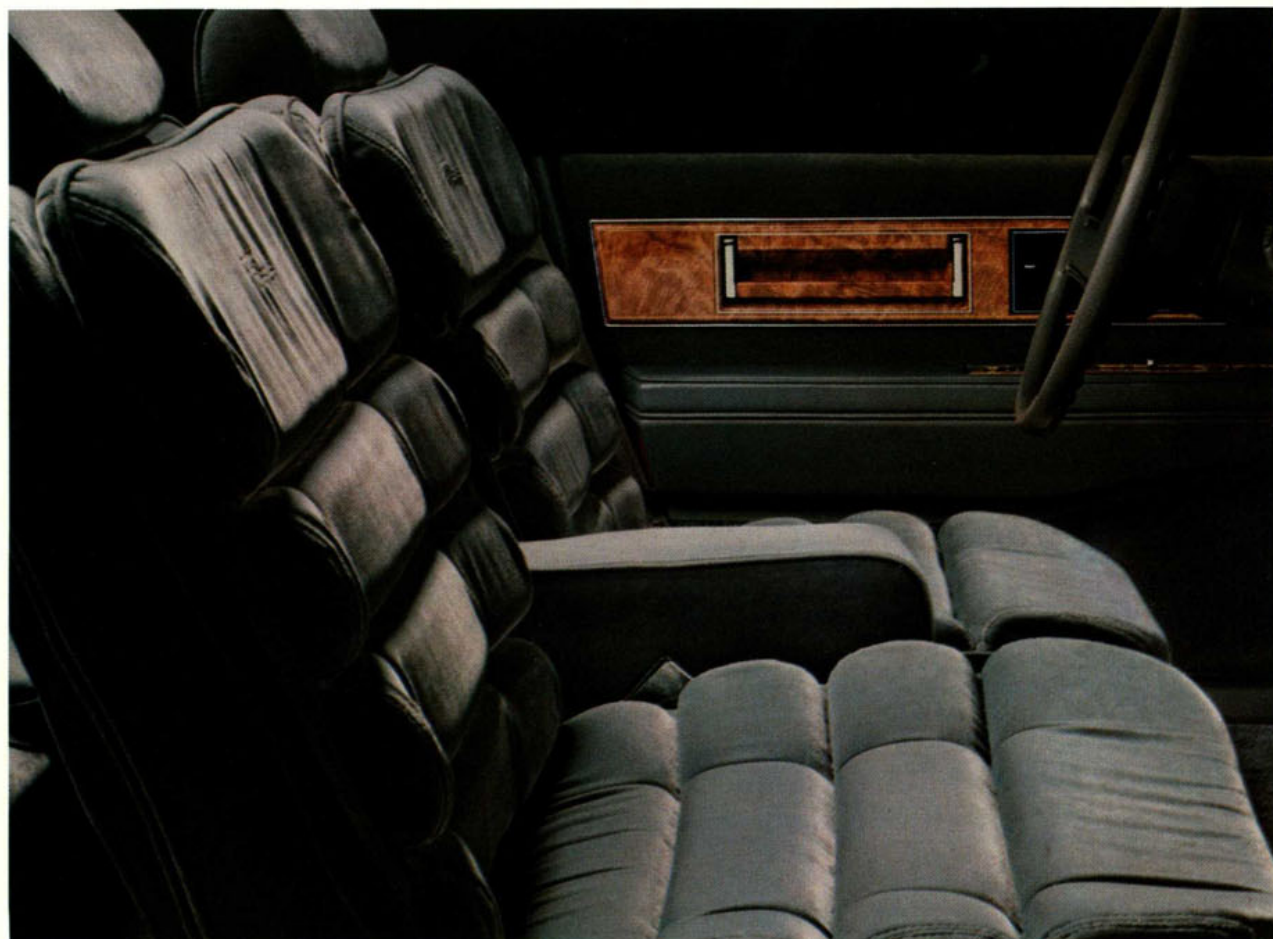
In sum, the Electra T Type represents an exhilarating blend of luxury, responsiveness, and true grand touring abilities.



## ELECTRA & PARK AVENUE

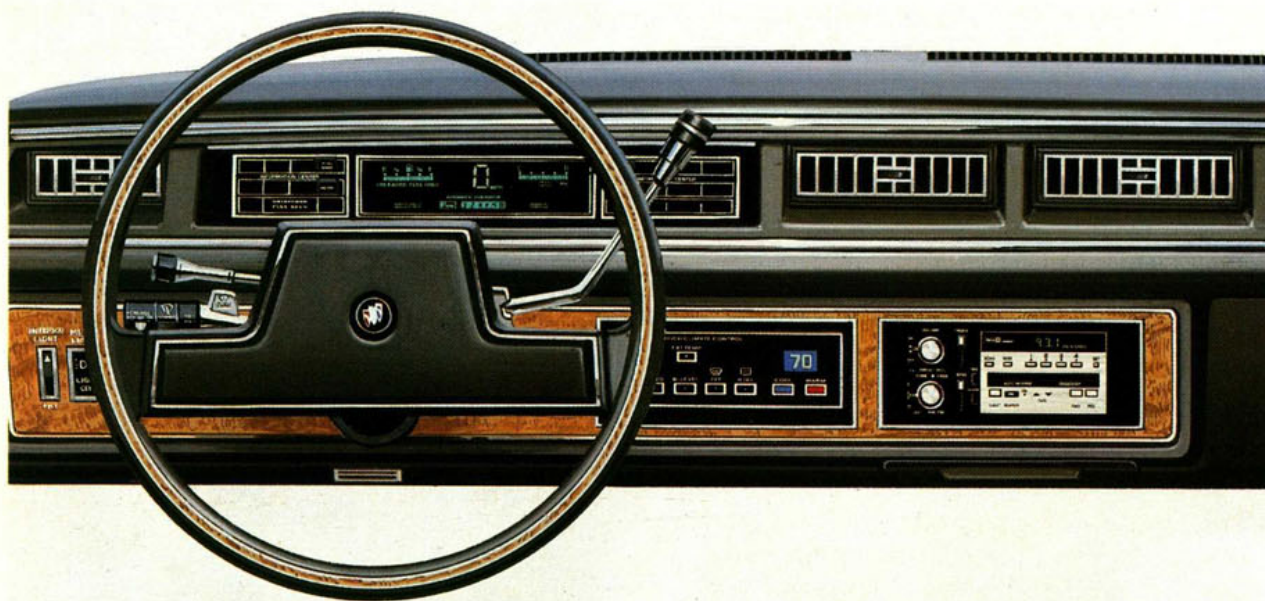
Electra interiors receive lavish attention in design and quality. Only the finest fabrics and the best quality leathers.

The wide, full-size seating for six adults adds spacious comfort to the elegant Park Avenue environment. The rich velour upholstery is available in a choice of five fashionable colours and the supple leather interiors are also available in a choice of hue. In the T Type, available leather seating creates an interior that in every way says touring in the modern manner. Underfoot are colour-coordinated cut-pile carpets, front and rear, that complement the luxury seating accommodations.



- A. Standard 55/45 seat, Electra coupe and sedan.
- B. Standard 45/45 seat, Electra T Type.
- C. Standard 55/45 seat, Park Avenue.
- D. Available 55/45 leather seat, Park Avenue.





Instruments in Canada are metric where required.



As Park Avenue owners have come to expect, the standard equipment list is exceptionally well-thought-out and thorough. From 6-way power seats to remote-operation trunk lid and fuel-filler door, the Park Avenue is in every way a complete car. Even air conditioning and Soft-Ray tinted glass are included. Every item required for graceful motoring is on call, as are a number of thoughtful touches such as passenger lighted visor vanity mirrors, rear-seat reading lamps and power windows—all standard.

The list of available equipment that may be used to enhance the considerable convenience already in place is extensive. The Delco GM/Bose Music System and a dealer-installed cellular telephone exemplify the depth of choice available to Electra owners. Also worthy of note are the electronic instrument cluster and the electronic (anti-lock) brake system, both of which represent technology at its highest level.

Buick's remarkable anti-lock brake system is available for the first time on all 1986 Electras. This system senses brake application and road conditions of each wheel and allows the driver to stop in a short distance without loss of steering control—even when two wheels are on ice and two on dry pavement.

The Buick Electra, the Park Avenue and the Electra T Type stand together as representatives of the Buick experience, yet each represents a highly individualized approach to motoring—from unrestrained luxury to grand touring performance.



# 1986 ELECTRA FACTS & FIGURES



## DIMENSIONS

	COUPE		SEDAN	
	mm	in	mm	in
Wheelbase	2815	110.8	2815	110.8
Overall Length	5003	197.0	5003	197.0
Overall Width	1832	72.1	1832	72.1
Height	1379	54.3	1379	54.3
Tread, Front/Rear	1532/1518	60.3/59.8	1532/1518	60.3/59.8
Headroom, Front/Rear	998/969	39.3/38.1	998/969	39.3/38.1
Legroom, Front/Rear	1078/1036	42.4/40.8	1078/1036	42.4/40.8
Shoulder Room, Front/Rear	1496/1464	58.9/57.6	1496/1494	58.9/58.8
Hiproom, Front/Rear	1409/1372	55.4/54.0	1409/1393	55.5/54.8
Usable Luggage Cap.	444 litres	15.7 cu. ft.	444 litres	15.7 cu. ft.
Fuel Tank Cap.	68.2 litres	15 gal.	68.2 litres	15 gal.

## STANDARD FEATURES ON ALL BUICKS

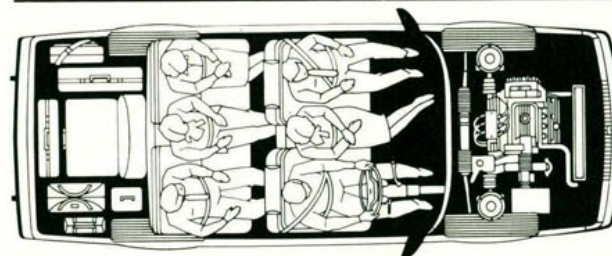
### SAFETY FEATURES

**OCCUPANT PROTECTION** • Manual lap/shoulder belts for driver and right front passenger (driver side includes visual and audible warning system) • Manual lap belts at each rear seat position, (and centre front, when applicable) • Energy absorbing steering column • Energy absorbing instrument panel • Energy absorbing front seatback tops • Laminated safety windshield glass and tempered safety side and rear window glass • Safety interlocking door latches • Passenger-guard inside door lock handles • Inertia-locking, folding front seat backs • Safety armrests • Head restraints, driver and right front pass. (adjustable/integral) • Dual sun visors • Smooth contoured door and window regulator handles • Pressure lock radiator cap.

**ACCIDENT AVOIDANCE** • Side marker lights and reflectors • Parking lamps that illuminate with headlamps • Four-way hazard warning flasher • Back-up lights • High-mounted stop lamps • Directional signal control (and lane change feature) • Windshield defroster, washer and dual speed wipers • Inside rearview mirror with vinyl-bonded glass • Outside left rearview mirror • Brake system with dual master cylinder and warning light • Starter safety switch • Dual action hood latch system (except rear opening Electra and LeSabre) • Low glare finish on instrument panel top, inside windshield mouldings, wiper arms/blades, metallic steering wheel surfaces • Illuminated heater and defroster controls • Illuminated windshield wiper and washer controls (if on I/P) • Tires with built-in tread-wear indicators • Safety road wheel

rims • Audible brake lining wear indicators, all disc brakes • Self-adjusting brake feature • Pressure relief fuel cap. • Rear window defogger

**THEFT DETERRENCE** • Audible reminder for ignition key removal • Theft deterrent steering column lock • Visible vehicle identification number • Remote inside hood release • Theft deterrent key system (separate key for ignition).



### A word about engines

These Buicks are equipped with GM-built engines produced by various divisions and affiliates of General Motors Corporation and GM of Canada.

Order Code	Displacement	Carb. bbl.	Cyl.	†V.I.N.	*Source	Transmission
LG2	3.8 litre (231 CID)	SFI	V6	3	(1)	4-spd. O.D. Automatic

\*Produced by GM (1) Buick Division USA

†The V.I.N. (Vehicle Identification Number) Engine Code is the eighth entry (letter or numeral) from the left on the vehicle serial number plate. The vehicle serial number plate is located on the top portion of the driver's side of the instrument panel and can be viewed from the exterior of the car by looking through the windshield.

## MODEL LINEUP

**Electra**—2-Door Coupe/4-Door Sedan

**Electra T Type**—4-Door Sedan

**Electra Park Avenue**—2-Door Coupe/4-Door Sedan

Select the combination of "extras" that make your Buick uniquely yours from the long list of standard and available features, some of which are given below. Ask your dealer about group packages and the many other features not indicated below. Your dealer will also advise you of the availability of the various items on the model of your choice.

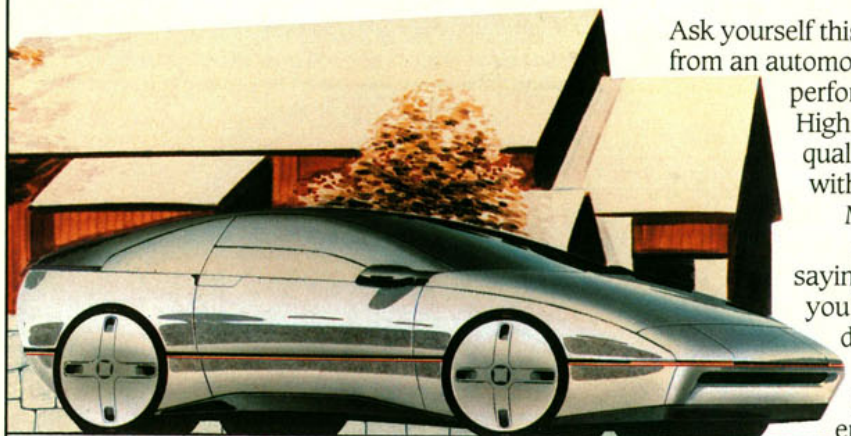
	Electra	Electra T Type	Electra Park Avenue
Engine—3.8 litre V6	S	S	S
Transmission—Overdrive Automatic	S	S	S
Brakes, Power, Front Disc/Rear Drum	S	S	S
Steering—Power	S	S	S
Computer Command Control	S	S	S
Power—Door Locks	A	A	S
Automatic Door Locks	A	A	A
Seat Back Recliner	A	A	A
Seat, 6-way, Driver	S	S	S
Passenger	A	A	A
Trunk Lock Release	A	A	S
Windows	S	S	S
Trunk Lock	A	A	A
Tires—205/75R x 14 (black)	S	—	A
205/75R x 14 (white)	A	—	S
215/65R x 15 (black)	—	S	—
Self Sealing	A	—	A
Air Conditioning—Manual	S	S	S
Touch Climate Control	A	A	A
Deck Lid Luggage Carrier	A	A	A
Electronic Cruise Control	A	A	S
Rear Window Defroster	S	S	S
Keyless Entry System	A	—	A
Soft-Ray Tinted Glass	S	S	S
Automatic Illumination Package	A	A	A
Lamp Monitoring System	A	A	A
Electric Remote Mirrors	A	A	S
Automatic Day/Night Mirror	A	A	A
Heated Left Mirror	A	A	A
Visor Vanity Mirror	A	A	S
Radio—AM/FM ETR Stereo	S	S	S
Cassette Player	A	A	A
Graphic Equalizer	A	A	A
Delco Bose Speaker System	A	A	A
6 Speaker System	A	A	A
Automatic Power Antenna	A	A	A
Power Sliding Roof Panel	A	A	A
Padded Vinyl Roof Top	A	—	A
Automatic Level Control	S	S	S
Gran Touring Suspension	A	S	A
Theft Deterrent System	A	A	A
Deluxe Luggage Compartment Trim	A	A	A
Deluxe Wheel Covers	S	—	—
Custom Wheel Covers	—	—	S
Wire Wheel Covers	A	—	A
Styled Aluminum Wheels	A	S	A
Variable-Delay Windshield Wipers	A	A	S

S—Standard A—Available (extra cost) — Not Available

Printed in Canada GM-4788



# BUICK. ARTISTRY AND TECHNOLOGY IN HARMONY.



Ask yourself this question: "What do I really want from an automobile?" Do you want luxury? High performance? Economy? Space? Beauty? High technology? Do you want *all* these qualities? Chances are, if you're honest with yourself, you do.

Most drivers want all those things.

At Buick, honesty prevents us from saying to you, "Here are all the things you've ever wanted in a car." We can't deliver on that promise. No one can.

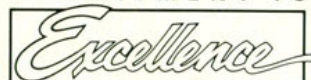
But what we can do is offer you a choice of finely crafted and engineered automobiles; invite you

to select from a full line of cars, each one of which is intended to satisfy a particular set of driver wants and needs.

The task of designing and building better Buicks is a job with no outer limits. A constant seeking of balance: comfort with agility, practicality with luxury, durability with style. And always, Buick's tradition of balancing artistry with technology.

This balance, and the constant search for it by dedicated engineers and designers, appears in every Buick built. It is a Buick component in which we take considerable pride, the ingredient that sets the cars on these pages apart. The quality that makes a Buick a Buick.

## COMMITMENT TO



General Motors recognizes that taking delivery of your new vehicle is a significant event. To

ensure that your delivery experience contributes to your overall satisfaction, we have implemented a "Commitment to Excellence" Delivery Procedure.

This procedure includes a thorough new vehicle inspection by both the service technician and salesperson, a full tank of fuel, and a follow-up survey to determine your satisfaction with the delivery experience.

General Motors "Commitment to Excellence" is yet another excellent reason to "Look at GM Today."



## Protection Plan

*an agreement directly with General Motors.* It is the one with the GM Protection Plan logo shown above. This logo on all Plan material assures you that the service contract you are buying is the GM Plan, we believe the finest such program available to GM owners.

The GM Protection Plan provides additional protection during and after the new vehicle limited warranties. Ask your General Motors dealer for details and information about the *genuine GM Protection Plan.*

While there are many service contracts available on the market today, *there is only one which gives you*



5-year unlimited kilometres corrosion perforation warranty. On all 1986 GM passenger cars. Ask your dealer for details.

## FOR YOUR PROTECTION\*

1. New Vehicle Limited Warranty — 12 months or 20,000 kilometres, whichever comes first.
2. Major Assembly Coverage (1st Purchaser)—after expiration of basic coverage up to a total of 36 months or 60,000 kilometres whichever comes first on gasoline engine, transaxle, front-wheel drive, engine cooling and fuel, steering, front suspension, brakes, factory-installed air conditioner, electrical, electronic instrument cluster† (\$100 deductible). 2nd Purchaser \$25 transfer fee required for unexpired portion of coverage.
3. Owner Assistance Program.
4. Special Policy Adjustment Program.

\*Ask your dealer for details.  
†Deductible does not apply.

## A WORD ABOUT THIS CATALOGUE

The vehicles described in this catalogue incorporate components produced by General Motors of Canada Limited and related companies and suppliers. During manufacturing, different components than initially scheduled may be used.

All illustrations and specifications contained in this catalogue are based on the latest product information at time of publication approval. The right is reserved to make changes at any time, without notice, in prices, colours, materials, equipment, specifications and models, and to discontinue models. Some of the equipment shown or described throughout this catalogue is available at extra cost or can only be ordered in conjunction with the other optional equipment. Some options may not be available when your vehicle is built. Check your dealer for complete information.



Official Supplier  
to The 1986  
World Exposition

