



---

**REGAL**

---

**BUICK**

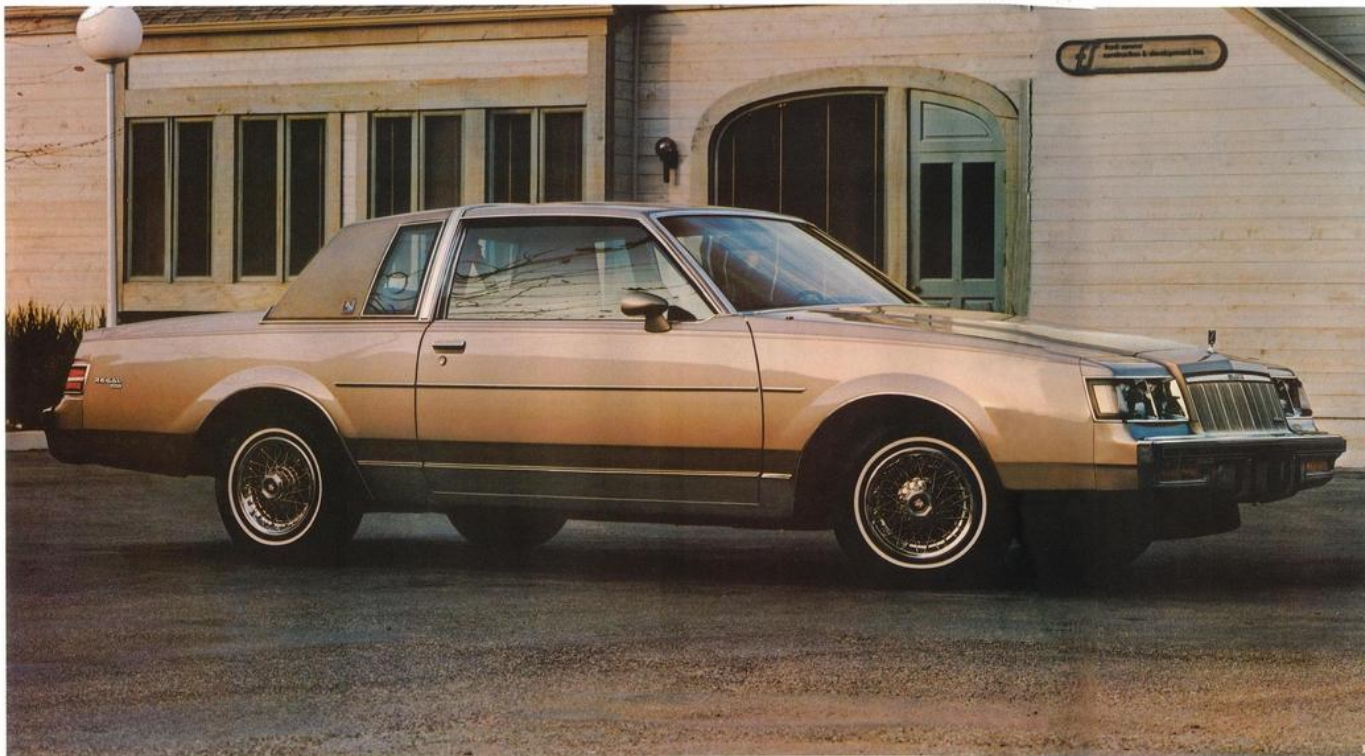
---

**1985**

---







- 1 The Regal Limited puts the emphasis on personal luxury in a mid-size coupe. The lines are classic, the luxury appointments abundant. The Regal Limited is Regal in more than name.
- 2 The Regal T Type. Performance is the key here, with the horsepower working with the standard Gran Touring suspension which makes the T Type a world-class high-performance sports coupe.
- 3 Regal Grand National. Pure performance and the looks to go with it. The theme is black with the grille surround and special styled alloy wheels offering the only contrasting highlights.

## REGAL

The Regal is a beautiful car. Its lines are classic, formal, yet aerodynamic. And the beauty is not just skin deep. Those crisp, clean, elegant lines surround an interior for which adjectives like sumptuous, luxurious and comfortable are perfectly suited. And, digging a little deeper, you uncover beauty of another kind: mechanical. Every Regal has been equipped with the hardware to make it perform and ride in a way that is very much in keeping with its name. Regal is, in a word, regal.

This year Regal comes to you in three coupe versions: Regal, Regal Limited and T Type. Actually, make that four, because there is a very special version of the T Type—but more on that in a moment.

It is simply not fair to call the basic Regal basic. It is anything but. The standard engine is a 3.8 litre V-6 with automatic transmission. Every Regal has power steering and power assisted low-drag front disc/rear drum brakes. The springs are computer selected for optimum performance characteristics.

The Regal and Regal Limited are personal luxury cars with a time-honoured sense of luxury about them. The Regal T Type, however, gives that emphasis a decided shift toward high performance. There are fat, P215/65R15 blackwall radial tires on cast aluminum wheels. There is blackout trim around the windows and headlights and a special treatment for the taillights. The engine is a 3.8 litre V-6 with SFI. It is turbocharged.

That extra special version of the T Type mentioned earlier is the dramatic Buick Regal Grand National Coupe. It has the T Type's performance equipment, but takes it all a step further with a dramatic, aggressive all-black exterior, special black-painted aluminum wheels, a firm-ride suspension and a host of standard features.



## REGAL INTERIOR

Remember those adjectives perfectly suited to describing a Regal's interior: sumptuous, luxurious, and comfortable? The photographs on these two pages should give you a pretty good idea of what we are talking about.

The Regal T Type offers a standard notchback seat; 55/45 notchback seats or buckets are also available. The standard seat in the Regal Limited is a 55/45 notchback, but you can order 45/45 leather-trimmed seats. The door panels will be trimmed to match your choice of seat style and trim.

The Regal Limited's instrument panel is a study in elegant line and form. Wood-tone trim emphasizes the Regal's luxury character. Electronic digital instrumentation is available.

Inside, the T Type's performance orientation is carried out with a standard turbo boost gauge with L.E.D. readout and L.E.D. tachometer. And multi-adjustable bucket seats are available for the ordering.

The distinctive high-performance theme dramatically conveyed by the Grand National's all-black paint scheme, aerodynamic front and rear spoilers and special wheels and tires, is carried out inside Buick's performance champion. Bucket seats with dark gray cloth inserts and black cloth bolsters not only look great, but provide the kind of lateral support for legs and upper body an enthusiast driving an enthusiast's machine demands. The Grand National is fitted with a hand-filling, three-spoke, leather-wrapped sport steering wheel. The instrument panel includes a trip odometer, and electronic tachometer and turbo boost gauge, and a special Grand National identification badge.

Interiors			
Regal Seat Styles	Regal	Limited	T Type
1 Cloth Notchback Bench	S		S
2 Cloth Buckets	A		A
3 Cloth 55/45 Notchback		S	
4 Leather/Vinyl 45/45		A	A
Cloth 55/45 Notchback	A		A
Cloth Lear Siegler Buckets			A

**Left:** This is luxury in the Regal tradition. Wide, comfortable cloth-covered seat with a fold-down centre armrest are standard; and in the Limited, the interior is accented with bright mouldings and simulated woodgrain inserts. Comfort and luxury in an inviting, personal-size package.

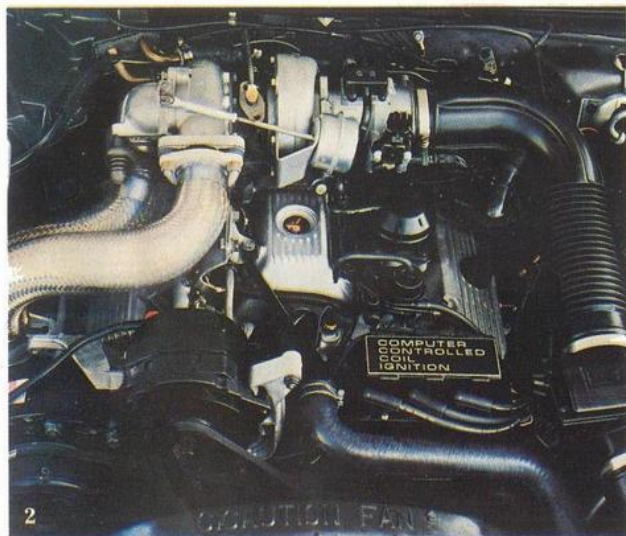


The 3.8 litre SFI turbocharged V-6, one of the most advanced pieces of engine technology available today, is found in the business end of the Regal T Type. And its SFI designation stands for sequential-port fuel injection. Buick engineers worked with Bosch of Germany to develop the SFI system which delivers a precisely metered and timed injection of fuel directly into each cylinder. Turbocharging boosts the engine's output an incredible 81% over the normally aspirated version, and that puts 200 horsepower churning through the T Type's standard four-speed automatic transmission with overdrive.

But horsepower isn't the Regal T Type's only story. Buick's performance champion rides on a special Gran Touring suspension that includes higher-rate springs and shock absorbers, a rear stabilizer bar and stiffer front stabilizer bar. There is fast-ratio power steering and a 3.42:1 performance rear axle ratio. With that kind of performance potential under the hood, and those kinds of suspension components under each fender, the Regal T Type becomes the kind of machine that

turns angry twists and curves into docile straightaways. It gives a whole new meaning to getting from here to there. The steering is quick and precise, and there is a special contact with the road feeding back into your hands; you can almost feel those big radials grabbing handfuls of highway. And you can most definitely feel the turbo motor doing what it does best, which, you may have guessed, is making horsepower.

You can add to Regal's basic complement of luxury, comfort and convenience features from a long list of available options. There is manual air conditioning, (standard on T Type) or Electronic Touch Climate Control with high-tech touch controls and speeds; electronic digital instrumentation; Electronic Cruise Control; Delco ETR (electronic tuned receiver) AM-FM stereo radio with cassette player, graphic equalizer and extended range speakers; six-way power seat; remote-control mirrors; hatch roof; and much much more. Choose your Regal and then enjoy equipping it just for you.



- 1 Delco AM-FM stereo with graphic equalizer, cassette, clock. Electronic Touch Climate Control
- 2 3.8 litre sequential-port fuel injected turbocharged V-6 engine (T Type)
- 3 Tachometer and turbo boost gauge (T Type)
- 4 Cast aluminum wheel
- 5 Rear deck spoiler (T Type)



# 1985 REGAL FACTS & FIGURES

Select the combination of "extras" that make your Buick uniquely yours from the long list of standard and available features, some of which are given below. Ask your dealer about group packages and the many other features not indicated below. Your dealer will also advise you of the availability of the various items on the model of your choice.

	Regal	Regal T Type	Regal Limited
Engines—3.8 litre V6	S	—	S
3.8 litre V6 Turbo	—	S	—
4.3 litre V6 Diesel	A	—	A
5.0 litre V8	A	—	A
Transmissions—Automatic	S	—	S
Overdrive Automatic	A	S	A
Brakes—Power Front Disc/Rear Drum	S	S	S
Steering—Power	S	S	S
Tires—195/75R x 14 Radial (White)	S	—	S
205/70R x 14 Radial (White)	A	—	A
215/65R x 15 Radial (Black)	—	S	—
(White lettered)	—	A	—
Self-Sealing Tires	A	—	A
Firm Ride & Handling Suspension	A	—	A
Gran Touring Suspension	A	S	A
Cruise Control	A	A	A
Seats—55/45 Divided	A	A	S
45/45 Divided	—	—	A
Notchback	S	S	—
Bucket Reclining	A	A	—
Reclining Pass. Side Only	A	A	A
Tilt Steering	A	A	A
Mouldings—Rocker	S	S	—
Roof Drip	S	S	S
Belt Reveal	A	S	S
Wheel Openings	S	S	S
Wide Rocker	A	—	S
Bodyside	S	A	S
Power—Seats 6-way	A	A	A
Door Locks	A	A	A
Deck Release	A	A	A
Windows	A	A	A
Wheels—Deluxe Covers	S	—	S
Wire Covers	A	—	A
Chrome Wheels	A	—	A
Aluminum Wheels	A	S	A
Luggage Compartment Trim	A	A	A
Air Conditioning—Manual	A	S	A
Automatic	A	A	A
Rear Window Defroster	A	A	A
Roof—Landau	A	—	A
Sunroof	A	A	A
Hatchroof	A	A	A
Glass—Soft-Ray Tinted	A	A	A
Theft Deterrent System	A	A	A
Twilight Sentinel	A	A	A
Tungsten Halogen Headlamps	A	A	A
Digital Electronic Instrument Cluster	A	—	A
Radio—AM	S	S	S
AM/FM	A	A	A
AM/FM Stereo	A	A	A
AM/FM Stereo/Cassette	A	A	A
Antenna—Power	A	A	A
Cornering Lamps	A	—	A
Headlamps-on Indicator	A	A	A
Visor Vanity Mirror	A	A	A
Two-tone Paint	A	A	A

	Regal	Regal T Type	Regal Limited
Bumper Protective Strips	S	S	S
Bumper Guards	S	S	S
Mirrors, Outside; Chrome	S	S	—
Sport	A	A	S
Accoustical Insulation Package	S	S	S
Colour-keyed Seat and Shoulder Belts	S	S	S
Side Frame Jacking System	S	S	S
Limited Slip Rear Axle	A	A	A
Carpet Savers	A	A	A
Heavy Duty Cooling	A	A	A
Engine Block Heater	A	A	A
Door Courtesy and Warning Lamps	A	A	S
Sail Panel Reading Lamp	A	—	A
Automatic Level Control	A	—	A
Variable Delay Windshield Wiper	A	A	A
Heavy Duty Generator	A	S	A

S-Standard A-Available (extra cost) —Not Available

## DIMENSIONS

	mm	in
Wheelbase	2746	108.1
Overall Length	5095	200.6
Overall Width	1819	71.6
Height	1405	55.3
Tread, Front/Rear	1486/1466	58.5/57.7
Headroom, Front/Rear	962/960	37.9/37.8
Legroom, Front/Rear	1086/963	42.8/37.9
Shoulder Room, Front/Rear	1445/1425	56.9/56.1
Hiproom, Front/Rear	1314/1394	51.7/54.9
Usable Luggage Cap.	485 litres	16.2 cu. ft.
Cargo Volume	—	—
Fuel Tank Cap.	68.5 litres	15.0 gal.
Diesel	74.9 litres	16.5 gal.

## A word about engines

These Buicks are equipped with GM-built engines produced by various divisions and affiliates of General Motors Corporation and GM of Canada.

Order Code	Displacement	Carb. bbl.	Cyl.	V.I.N.	*Source	Transmission
LD5	3.8 litre (231 CID)	2	V6	A	(1)	Automatic
LT6	4.3 litre (260 CID)	Diesel	V6	V	(3)	Automatic
LG4	5.0 litre (305 CID)	4	V8	H	(2) (4)	Automatic O.D. Automatic
LM9	3.8 litre (231 CID) Turbo	SFI	V6	9	(1)	O.D. Automatic

\*Produced by GM (1) Buick Division USA (2) Chevrolet Division USA (3) Oldsmobile Division USA (4) GM of Canada

†The V.I.N. (Vehicle Identification Number) Engine Code is the eighth entry (letter or numeral) from the left on the vehicle serial number plate. The vehicle serial number plate is located on the top portion of the driver's side of the instrument panel and can be viewed from the exterior of the car by looking through the windshield.

## STANDARD FEATURES ON ALL BUICKS

### SAFETY FEATURES

OCCUPANT PROTECTION • Manual lap/shoulder belts for driver and right front passenger (driver side includes visual and audible warning system). Manual lap belts at each rear seat position, (and centre front, when applicable) • Energy-absorbing steering column • Energy absorbing instrument panel • Energy absorbing tops, front seats • Laminated safety windshield glass and tempered safety side and rear window glass • Safety interlocking door latches • Passenger-guard inside door lock handles • Inertia-locking, folding front seat backs • Safety armrests • Safety strength seat attachments • Head restraints, driver and right front pass. (adjustable/integral) • Dual sun visors • Smooth contoured door and window regulator handles • Pressure lock radiator cap.

ACCIDENT AVOIDANCE • Side marker lights and reflectors • Parking lamps that illuminate with headlamps • Four-way hazard warning flasher • Backup lights • Directional signal control (and lane change feature) • Windshield defroster, washer and dual speed wipers • Inside rearview mirror with vinyl-bonded glass • Outside left rearview mirror • Brake system with dual master cylinder and warning light • Starter safety switch • Dual action hood latch system (except rear opening Electra) • Low glare finish on instrument panel top, inside windshield mouldings, wiper arms/blades, metallic steering wheel surfaces • Illuminated heater and defroster controls • Illuminated windshield wiper and washer controls (if on I/P) • Tires with built-in tread-wear indicators • Safety road wheel rims • Audible brake lining wear indicators, all disc brakes • Self-adjusting brake feature • Pressure relief fuel cap.

ANTI-THEFT • Audible reminder for ignition key removal • Anti-theft steering column lock • Visible vehicle identification number • Remote inside hood release • Anti-theft key system (separate key for ignition).

## MODEL LINEUP

Regal—2-Door Coupe

Regal T Type—2-Door Coupe

Regal Limited—2-Door Coupe

## A word about assembly, components, and optional equipment in these vehicles.

The vehicles described in this brochure are assembled at various Divisions of General Motors Corporation. These vehicles incorporate thousands of different components produced by General Motors of Canada Limited and related companies and their suppliers. From time to time during the manufacturing process, it may be necessary, in order to meet public demand for particular vehicles or equipment, or to meet federally mandated emission and safety requirements or fuel economy guidelines, or for other reasons, to produce vehicles with different components or differently sourced components than initially scheduled. All such components have been approved for use in our products by General Motors of Canada Limited or related companies and will provide the quality performance associated with our name.

Please note that certain optional equipment can be ordered only in conjunction with other optional equipment.

Also, upgrading from specified standard equipment may be necessary when certain optional equipment is ordered. Ask your sales representatives for details.

With respect to extra cost optional equipment, make certain you specify the type of equipment you desire on your vehicle when ordering it from your dealer. Some options may be unavailable when your car is built. Your dealer receives advice regarding current availability of options. You may ask the dealer for this information. GM also requests the dealer to advise you if an option you ordered is unavailable. We suggest you verify that your car includes the optional equipment you ordered or, if there are changes, that they are acceptable to you.

All illustrations and specifications contained in this catalogue are based on the latest product information available at time of publication approval. The right is reserved to make changes at any time, without notice, in prices, colours, materials, equipment, specifications and models, and to discontinue models. Some of the equipment shown or described throughout this catalogue is available at extra cost. Check with your dealer for complete information.

# BUICK

Wouldn't you really rather have a Buick?

Printed in Canada GM-4617

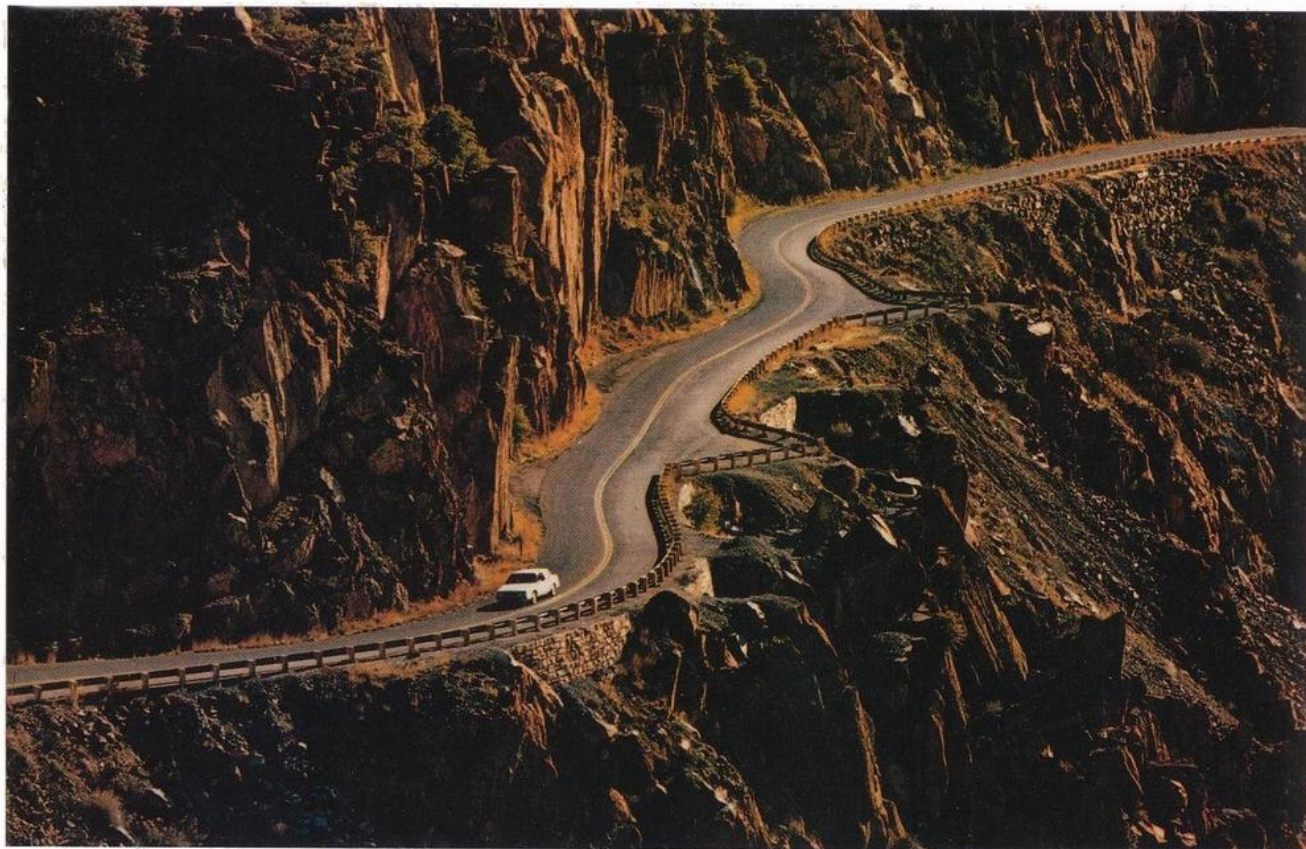


# An Introduction to the 1985 Buicks

For 81 years Buick has offered automobiles that have set high standards for quality, style and luxury. That is the Buick tradition. For 1985 that tradition continues in a lineup of automobiles that reflect our understanding of ever-changing North American tastes and needs, and our dedication to making every Buick worthy of the name.

**Quality Construction**—It is quality in the best Buick tradition, the result of selecting the finest materials and assembling them with craftsmanship and care. It is the product of a work force that has, in the face of intensified competition from every quarter, at home and abroad, rededicated itself to offering the finest Buicks ever. And it is the result of the application of the latest developments in technology, from engine control systems to robotic assembly processes.

**Functional beauty**—That's the key. An automobile must look good, but still it has a duty to perform. Good looks can't be allowed to get in the way. The most efficient shape for packaging people and their possessions is a box, but aerodynamically and aesthetically, that shape leaves something to be desired. At the other end of the scale, it is relatively easy to develop a shape that will slip through the wind, barely rippling roadside grasses, but only by paying a penalty in room for passengers and cargo space. The answer, of course, lies between those extremes. And that's what you are going to see in this book: the form, the functional art of Buick. We think you will agree with us when we say that for 1985, the Buick lineup presents an unsurpassed study in the philosophy of functional beauty.



## COMMITMENT TO



At General Motors, a lot of new thinking has gone into our products. New thinking aimed at completely satisfying you, the customer. Our designers and engineers are making history in aerodynamic design, computer aided technology, fuel efficiency and safety.

As further proof of our goal of totally satisfying you, at GM dealerships we are implementing a "Commitment to Excellence" Delivery Procedure.

The program includes: a thorough new-vehicle inspection by both the service technician and the salesperson; a full tank of fuel; plus a follow-up survey based on your impression of the delivery process.

With a commitment like that, you've got a lot of excellent reasons to "Look at GM Today". See your dealer for complete details.

## FOR YOUR PROTECTION

**New Vehicle Limited Warranty**—This warranty covers any repairs needed during the basic coverage period due to defects in material or workmanship. Any required adjustments will also be made during the basic coverage period of 12 months or 20,000 kilometres, whichever comes first. The complete vehicle, except tires, is covered during this period.

**Powertrain Coverage**—This powertrain warranty covers gasoline engines and other powertrain components up to a total of 24 months or 40,000 kilometres, whichever comes first. This powertrain warranty also covers specific diesel engine components to 36 months or 80,000 kilometres, whichever comes first. All powertrain warranty repairs are subject to a \$100 deductible for each repair visit.

**Corrosion (Rust-Through) Coverage**—General Motors warrants for 1985 passenger cars, light duty trucks and vans that your General Motors dealer will repair or replace at no charge any body sheet metal panel found to have developed perforation (rust-through) due to corrosion. This warranty begins on the date the vehicle is first delivered or put in use and extends for 36 months, regardless of distance travelled by the vehicle.

**Battery Coverage**—If your battery should fail under normal service due to a defect in material or workmanship after the basic coverage period expires, but before the vehicle has been in use 36 months, it can be replaced on a pro rata adjustment basis for a new Delco battery. The pro rata adjustment price of the new battery will be based on the number of months the original battery was in use since the start of the new vehicle warranty. Contact a dealer handling your vehicle for further details on such adjustments.

**Tires are warranted by the tire manufacturer.**

**Owner Assistance**—The satisfaction and goodwill of owners are of primary concern to GM dealers and General Motors of Canada Limited. In the event a warranty or some other matter is not handled to your satisfaction, the following steps should be taken:

1. Discuss the problem with your dealership management.
2. Contact the General Motors Zone Office closest to you as listed in the Owner Assistance Section of your Warranty and Owner Assistance Booklet.
3. Contact the Customer Service Representative, General Motors of Canada Limited, Oshawa, Ontario.

**Special Policy Adjustment Program Beyond the Warranty Period**—General Motors is proud of the protection afforded by its warranty coverages. In order to achieve maximum customer satisfaction, there may be times when General Motors will establish a Special Policy Adjustment program to pay all or part of the cost of certain repairs beyond the terms of the warranty. Check with your General Motors dealer or the nearest G.M. Zone Office to determine whether any special policy adjustment program is applicable to your vehicle.



### Protection Plan

**Protection Plan**—While there are many service contracts available on the market today, there is only one which gives you an agreement directly with General Motors. It is the one with the Protection Plan logo shown.

This logo on all Plan material assures you that the service contract you are buying is the GM Plan, the finest such program available to GM owners.

The GM Protection Plan provides optional added mechanical and electrical repair protection during and after the new vehicle limited warranties. Ask your General Motors dealer for details and information about the genuine GM Protection Plan.



**Official Supplier  
to The 1986  
World Exposition**

