

BUICK 1983

LeSABRE





It is easy to look at the LeSabre and regard it as just another family car. In reality, nothing could be further from the truth. For LeSabre demonstrates how luxurious and comfortable a traditional family car can be.

Look, for example, at what LeSabre offers. It's a full-size, very roomy, six-passenger car. It has a trunk big enough to swallow at least half-a-dozen good-size pieces of luggage, and still have room for odd-shaped sundries. That's the kind of room a lot of people want, most likely, you do too.



What LeSabre offers above and beyond size and roominess is the one feature many find important: the quality Buick ride. In fact, it's the very reason a great many people bought LeSabres in the first place. You will find this high comfort level and hushed quiet in every LeSabre.

There are LeSabre Custom Coupes and Sedans, and there are LeSabre Limited Coupes and Sedans. The LeSabre Custom offers, standard, what lesser cars charge extra for: while the LeSabre Limited is the most luxurious LeSabre made. Many items that are extra-cost on other cars are standard on LeSabre Limited. In fact, when you look these Limiteds over, you may well conclude that these cars are in a class by themselves.

Left—LeSabre Limited Coupe
Cover—LeSabre Limited Sedan

Consider, for a moment, the more practical aspects of LeSabre. You certainly want a powerplant that is smooth and efficient. LeSabre's standard 3.8 litre V-6 measures up.

You may want more reserve power. In this case, we offer an available 5.0 litre V-8. And for most impressive fuel economy, consider a LeSabre with the 5.7 litre diesel V-8.

The 5.0 litre V-8 engine, when specified, comes with an automatic transmission with overdrive. All other engines come with a regular automatic transmission, standard.



A Delco Freedom II Plus battery concentrates extra cranking power in a more compact case for gasoline engines.

There are 11 new exterior colours among the 12 choices available, plus a choice of Designers' Accent paint treatments, vinyl tops, and trailer towing equipment, among many other things offered.

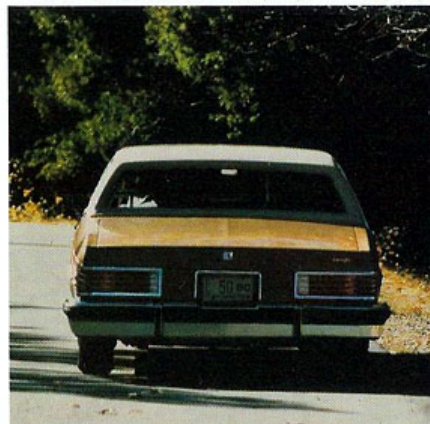
LeSabre. Practical? Of course. Luxurious? Naturally; it's a Buick. But ordinary? Never.

LeSabre Custom Coupe

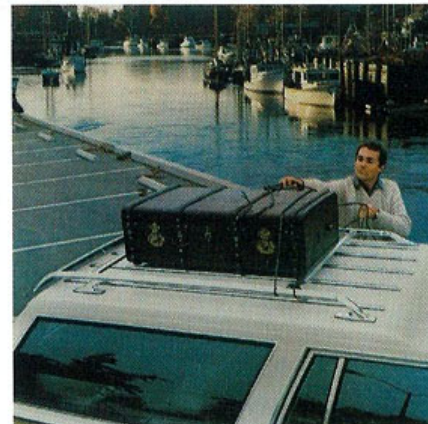


A long time ago, the Buick LeSabre Estate Wagon changed a lot of people's ideas about what a station wagon should be: a sturdy cargo hauler combined with outstanding passenger car luxury. The 1983 LeSabre Estate Wagon, we can happily report, continues this tradition.

Outside, it's LeSabre styling at its best. Inside, it treats you to a choice of standard all-cloth or all-vinyl interiors with a notchback front seat. Or, you can have a cloth front, vinyl rear seat combination. The practical side of LeSabre is its 87.9 cubic feet (2488 litres) of



LeSabre Limited Sedan



space with the second seat folded down. LeSabre has a power tailgate window for more convenience; a two-way tailgate for easy loading; and a "tailgate ajar" indicator, all standard.

You'll find air conditioning, Soft-Ray tinted glass, and extensive acoustic insulation standard.

The LeSabre's standard powerteam is the 5.0 litre V-8 with the automatic transmission with overdrive or you can order an available 5.7 litre diesel V-8.

The 1983 LeSabre Estate Wagon. It changed people's ideas about station wagons years ago. The Buick way.

LeSabre Estate Wagon



LeSabre seating may surprise you with its luxury look and feel. For example, the LeSabre Custom's standard notch-back front seat is covered with a rich velour. LeSabre Limited seats with a comfortable plush pillow design and knit fabric are a 55/45 concept which permits individual seat adjustment. Of course, you can order available 6-way power seats for driver and passenger for even more convenience. Available electric seatback recliners offer special comfort.



The interiors have generous portions of cloth and carpet for a most luxurious feeling. And in all LeSabres, the seat belt and ignition key buzzer has been replaced by a pleasing electronic tone. LeSabre Limiteds feature, standard, a chime to remind you if you inadvertently leave your headlamps on.

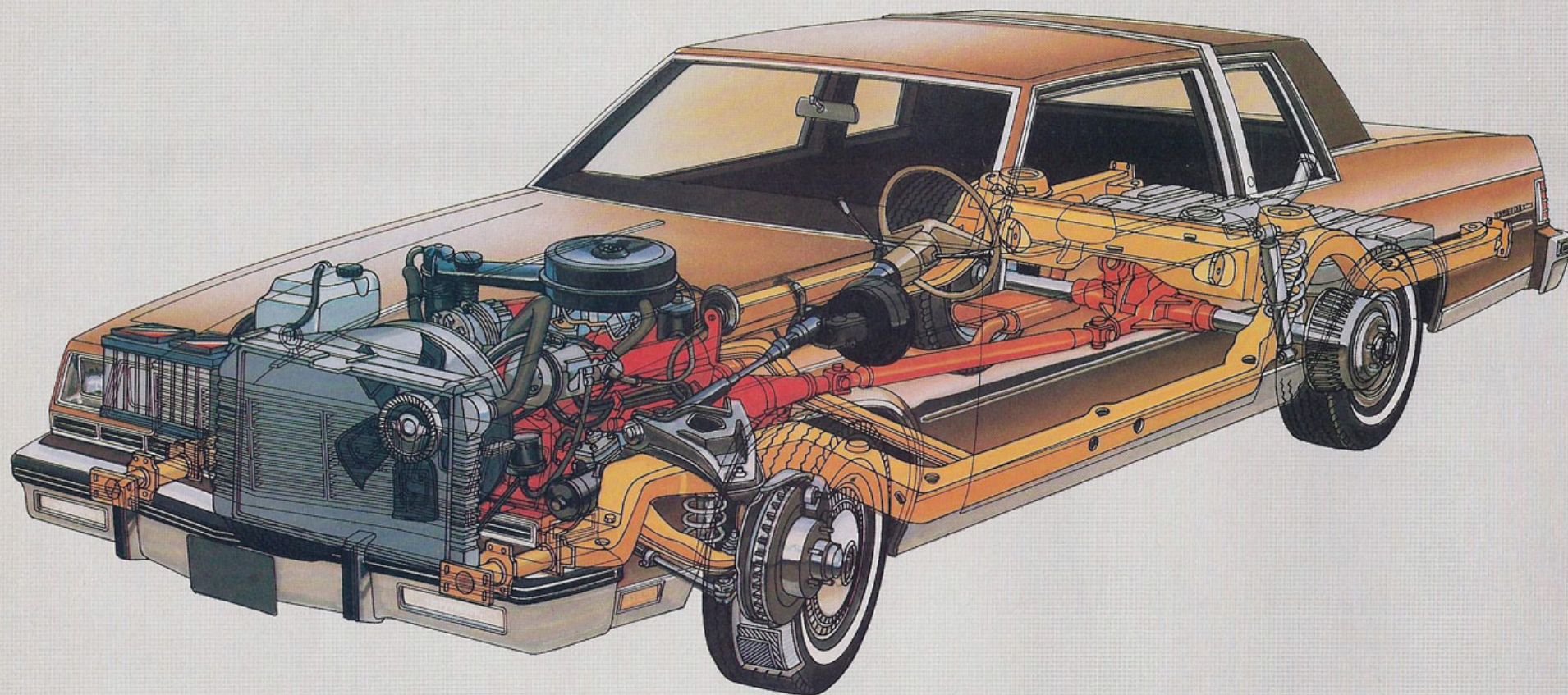
All of the interior comforts and luxuries that you'd expect in a LeSabre are there: a generous group of courtesy lights; multi-function control lever for turn signal, headlamp high/low beam, and windshield wiper/washer; front seat armrests, and more.

LeSabre's interiors offer further proof that LeSabre is, in fact, the certifiable "best buy" in many observers' minds.

LeSabre Interiors	Cloth or Vinyl Notchback	55/45 Cloth Notchback	55/45 Limited Cloth Notchback
LeSabre Custom	S	A	
LeSabre Limited			S
LeSabre Estate*	S	A	A
*rear seats vinyl	S-standard	A-available	

Right—LeSabre Limited Interior
Above—LeSabre Instrument Panel with Available Equipment





Standard Equipment

Engine/Chassis

- 3.8 litre (231 cid) 2-bbl. V-6
- Automatic transmission
- High-Energy Ignition
- Cold Climate Package (with available diesel engines)
- Delco Freedom II Plus Battery (maintenance-free)
- Power steering
- Low drag power brakes with front disc/rear drum
- Steel-belted, radial-ply whitewall tires—P205/75R15
- Rear shock absorbers with Pliacell® bags

- Compact spare tire
- Coil-spring suspension—front and rear
- Computer-selected chassis springs
- Full-perimeter frame
- Side-frame jack

Comfort and Convenience

- Notchback seats (LeSabre Custom)
- Limited level 55/45 notchback seats (LeSabre Limited)
- Lights: front- and rear-door-operated dome, instrument panel courtesy, front ashtray, glove box, trunk, engine compartment
- Rear doorjamb switch (sedans)
- Full-foam seat construction
- Multi-function control lever with turn

signal, headlamp high/low beam control, and windshield washer/wiper control

- Outside, chrome, rearview mirror—left-hand manual
- Rear-door and/or rear-quarter armrests
- Soft-Ray tinted glass (LeSabre Limited)
- Seat belt and ignition key electronic tone warning (LeSabre Custom)
- Seat belt and ignition key warning chime (LeSabre Limited)
- "Headlamps on" indicator and warning chime (LeSabre Limited)

Appearance and Protection

- Bumper protective strips—front and rear

- Bumper guards—front and rear
- Woodgrain trim on doors (LeSabre Limited)
- Woodgrain trim on instrument panel
- Cut-pile carpeting—front and rear
- Inside hood lock release
- Deluxe wheel covers
- Deluxe steering wheel (LeSabre Limited)
- Custom steering wheel (LeSabre Limited)
- Colour-coordinated seat and shoulder belts
- Colour-coordinated, protective, body-side mouldings

1983 LeSABRE FACTS & FIGURES

Select the combination of "extras" that make your Buick uniquely yours from the long list of standard and available features, some of which are given below. Ask your dealer about group packages and the many other features not indicated below. Your dealer will also advise you of the availability of the various items on the model of your choice.

	LeSabre Custom	LeSabre Limited	LeSabre Estate
Engines—3.8 litre V6	S	S	—
5.0 litre V8	A	A	S
5.7 litre V8 Diesel	A	A	A
Transmissions—Automatic	S	S	—
Overdrive Automatic	A	A	S
Brakes—Power Front Disc/Rear Drum	S	S	S
Steering—Power	S	S	S
Tires—205/75R15 Radial (White)	S	S	—
215/75R15 Radial (White)	A	A	—
225/75R15 Radial (White)	—	—	S
Self-Sealing Tires	A	A	A
Firm Ride and Handling Suspension	A	A	A
Gran Touring Suspension	A	A	—
Limited Slip Axle	A	A	A
Cruise Control	A	A	A
Seats—Notchback	S	—	S
55/45 Divided	A	S	A
Reclining—Power Seat Back	A	A	A
Steering Wheel—Sport	A	A	A
Tilt Steering	A	A	A
Tilt & Telescoping	A	A	A
Moldings—Rocker	S	S	S
Wheel Opening	S	S	S
Bodyside	S	S	A
Door Edge	A	A	A
Power—Seats 6-way	A	A	A
Door Locks	A	A	A
Door Locks—Automatic	A	A	A
Deck Release	A	A	A
Windows	A	A	A
Fuel Cap Lock	A	A	—
Wheels—Deluxe Covers	S	S	S
Wire Covers	A	A	A
Chrome Wheels	A	A	A
Styled Aluminum	A	A	A
Stripes—Accent	A	A	—
Air Conditioning—Manual	A	A	S
Automatic	A	A	A
Rear Window Defroster	S	S	S
Roof—Full Vinyl	A	A	—
Landau—Coupe	A	A	—
Sunroof	A	A	—
Woodgrain Paneling	—	—	A
Glass—Soft-Ray Tinted	A	S	S
Carrier—Roof Luggage	—	—	A
Theft Deterrent System	A	A	—
Twilight Sentinel	A	A	A
Lamp Monitoring System	A	A	A
Tungsten Halogen Headlamps	A	A	A
Radio—AM	A	A	A
AM/FM	A	A	A
AM/FM Stereo	A	A	A
AM/FM Stereo/Cassette	A	A	A
AM/FM Stereo/CB	—	—	A
4-Speaker System	A	A	A
Antenna—Power	A	A	A

S—Standard A—Available (extra cost) — Not Available

DIMENSIONS	COUPE		SEDAN		WAGON	
	mm	in	mm	in	mm	in
Wheelbase	2945	115.9	2945	115.9	2945	115.9
Overall Length	5547	218.4	5547	218.4	5600	220.5
Overall Width	1982	78.0	1982	78.0	2014	79.3
Height	1422	56.0	1440	56.7	1501	59.1
Tread, Front/Rear	1570/1542	61.8/60.7	1570/1542	61.8/60.7	1580/1626	62.2/64.0
Headroom, Front/Rear	986/973	38.8/38.3	1003/970	39.5/38.2	1006/999	39.6/39.3
Legroom, Front/Rear	1072/973	42.2/38.3	1072/988	42.2/38.9	1071/959	42.2/37.8
Shoulder Room, Front/Rear	1539/1496	60.6/58.9	1532/1549	60.3/61.0	1534/1548	60.4/60.9
Hiproom, Front/Rear	1398/1472	55.0/58.0	1398/1405	55.0/55.3	1400/1398	55.1/55.0
Usable Luggage Cap.	589 litres	20.8 cu. ft.	589 litres	20.8 cu. ft.	—	—
Cargo Volume (rear seat down)	—	—	—	—	2488 litres	87.9 cu. ft.
Fuel Tank Cap.	95 litres	20.8 gal.	95 litres	20.8 gal.	83.3 litres	18.3 gal.
Diesel	102 litres	22.4 gal.	102 litres	22.4 gal.	83.3 litres	18.3 gal.

A word about engines

These Buicks are equipped with GM-built engines produced by various divisions of General Motors Corporation and GM of Canada.

Order Code	Displacement	Carb. bbl.	Cyl.	V.I.N.	*Source	Transmission
LD5	3.8 litre (231 CID)	2	V6	A	(1)	Automatic
LV2	5.0 litre (307 CID)	4	V8	Y	(2)	Overdrive Automatic
LF9	5.7 litre (350 CID)	Diesel	V8	N	(2)	Overdrive Automatic

*Produced by GM (1) Buick Division USA (2) Oldsmobile Division USA

†The V.I.N. (Vehicle Identification Number) Engine Code is the eighth entry (letter or numeral) from the left on the vehicle serial number plate. The vehicle serial number plate is located on the top portion of the driver's side of the instrument panel and can be viewed from the exterior of the car by looking through the windshield.

STANDARD FEATURES ON ALL BUICKS

SAFETY FEATURES

OCCUPANT PROTECTION • Manual lap/shoulder belts with pushbutton buckles for driver and right front passenger (driver side includes visual and audible warning system). Manual lap belt at center position, when applicable • Manual lap belts with pushbutton buckles at rear passenger positions including center, when applicable • Energy-absorbing steering column • Passenger-guard inside door locks • High strength safety door latches and hinges • Inertia-type folding front seat back latches • Energy-absorbing instrument panel and front seat back tops • Laminated safety glass windshield/tempered safety glass side and rear windows • Safety armrests • Standardized identification symbols for controls and displays • Front seat head restraints for driver and right front passenger (adjustable or integral) • Glove box door latch and, when applicable, console cover latch impact security • Smooth contoured door and window regulator handles • Pressure lock radiator cap.

ACCIDENT AVOIDANCE • Side marker lights and reflectors • Parking lamps that illuminate with headlamps • Four-way hazard warning flasher • Backup lights • Lane change feature in direction signal control • Windshield defrosters, washer and dual speed wipers • Vinyl-bonded inside mirror glass • Outside left rearview mirror • Dual master cylinder brake system with warning light • Starter safety switch • Dual action safety hood latch • Low glare finish on instrument panel top, inside windshield moldings, wiper arms and blades, and steering wheel metallic surfaces • Safety road wheel rims • Front disc brakes with audible wear indicators • Self-adjusting brakes • Illumination of heater and defroster controls on instrument panel • Illumination of windshield wiper and washer controls (when located on instrument panel) • Pressure relief fuel cap.

ANTI-THEFT • Audible anti-theft ignition key reminder • Anti-theft steering column lock • Inside hood release • Anti-theft key system (one key for ignition only, second key for doors, trunk/hatch/tailgate and glove compartment) • Visible vehicle identification number.

MODEL LINEUP

LeSabre Custom—2-Door Coupe/4-Door Sedan

LeSabre Limited—2-Door Coupe/4-Door Sedan

LeSabre Estate Wagon—4-Door Estate Wagon

A word about assembly, components, and optional equipment in these vehicles.

The vehicles described in this brochure are assembled at various Divisions of General Motors Corporation. These vehicles incorporate thousands of different components produced by General Motors of Canada Limited and related companies and their suppliers. From time to time during the manufacturing process, it may be necessary, in order to meet public demand for particular vehicles or equipment, or to meet federally mandated emission and safety requirements or fuel economy guidelines, or for other reasons, to produce vehicles with different components or differently sourced components than initially scheduled. All such components have been approved for use in our products by General Motors of Canada Limited or related companies and will provide the quality performance associated with our name.

Please note that certain optional equipment can be ordered only in conjunction with other optional equipment.

Also, upgrading from specified standard equipment may be necessary when certain optional equipment is ordered. Ask your sales representatives for details.

With respect to extra cost optional equipment, make certain you specify the type of equipment you desire on your vehicle when ordering it from your dealer. Some options may be unavailable when your car is built. Your dealer receives advice regarding current availability of options. You may ask the dealer for this information. GM also requests the dealer to advise you if an option you ordered is unavailable. We suggest you verify that your car includes the optional equipment you ordered or, if there are changes, that they are acceptable to you.

All illustrations and specifications contained in this catalogue are based on the latest product information available at time of publication approval. The right is reserved to make changes at any time, without notice, in prices, colours, materials, equipment, specifications and models, and to discontinue models. Some of the equipment shown or described throughout this catalogue is available at extra cost. Check with your dealer for complete information.

BUICK
Today's the day.