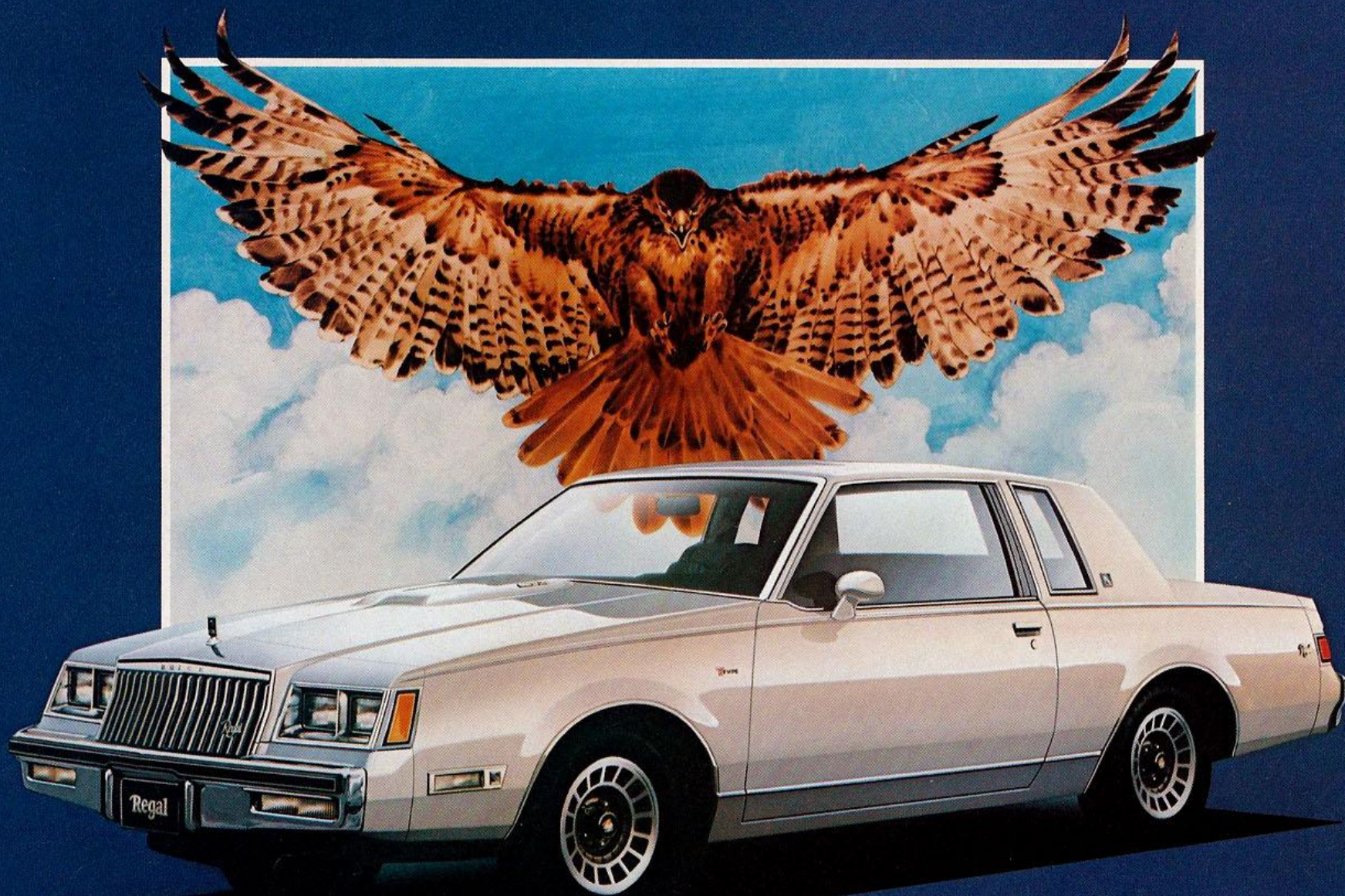


BUICK 1983

REGAL





It isn't difficult to pinpoint one big reason for Buick Regal's popularity. It's the styling. The aerodynamic, sleek look of the Regal Coupes and the crisp, limousine-like styling of the Regal Sedans. Over and over, people have said that Regal styling impressed them. As you can see, we've kept the styling that has been getting the raves on 1983 Regals.

Regals come in three body styles and several personalities. The TTYPE Coupe you see here is definitely the sporty one. Right away, its TTYPE identification tells you this



Regal has aspirations for more than sedate cruising. A cursory glance at the standard, wide oval steel-belted radials and styled aluminum wheels reinforces the feeling. But the biggest clue that this is no ordinary Regal comes from the bulge in the hood. Under it, a turbocharged 3.8 litre V-6 with low-restriction dual exhausts, mated to an automatic transmission with overdrive and a performance axle ratio.

If you're the kind of driver who responds to a gutty exhaust growl and the whine of a pumped-up turbo, then you're going to like the way this 1983 Buick Regal TTYPE Coupe responds to you. And it behaves itself very nicely, thank you, on its Gran Touring suspension, aided crisply by standard fast-ratio power steering.

There is much more to delight the enthusiastic driver in you.

Here's the pure luxury side of Regal: The Regal Limited Coupe pictured here and Regal Limited Sedan on the next page. Regal Coupe and Regal Sedan offer very nearly the same amenities, at lower cost, than the Limited models.

All 1983 Regals wear new grilles. Your eyes will most likely be drawn to the restyled standard wheelcovers, too. They blend nicely with Regal's overall styling.

The reasons for Regal's popularity are many, to be sure. Besides its superb looks, Regal offers a choice of smooth power



teams, beginning with the standard 3.8 litre V-6 and automatic transmission. Plus a range of available gasoline or diesel engines. Or maybe it's the generous array of standard automatic and power equipment. Or the exceptional range of available equipment. Whatever the reasons, we're glad that so many people find good reasons to own Regals. We wouldn't want it any other way.

1983 Regals promise more of what has made them a continuing favourite. Aerodynamic coupes. Roomy sedans. The just-right balance of formality plus sportiness. A brace of new exterior colours coordinated with new interior choices. Plus a range of available equipment that, depending on the model, includes such diverse items as an astrorooftop or hatch roof, custom locking wire wheelcovers, coach lamps, and a wide range of handsome vinyl roofs.

Regal Limited Coupe



The Regal Estate Wagon, shown on the right, is very popular just as its sedan counterpart is, and for many of the same reasons. First of all, it is a trim, mid-size station wagon; one with a generous 2032 litres (71.8 cu. ft.) of load space available with the second seat folded down. Second, it is powered by a standard 3.8 litre V-6 and automatic transmission. And third, it has the looks and feel of a Regal Sedan, which means that its trim size can slip into tight places where larger vehicles can't. Regal's full coil spring suspension smooths the ride. Power steering



Regal Limited Sedan



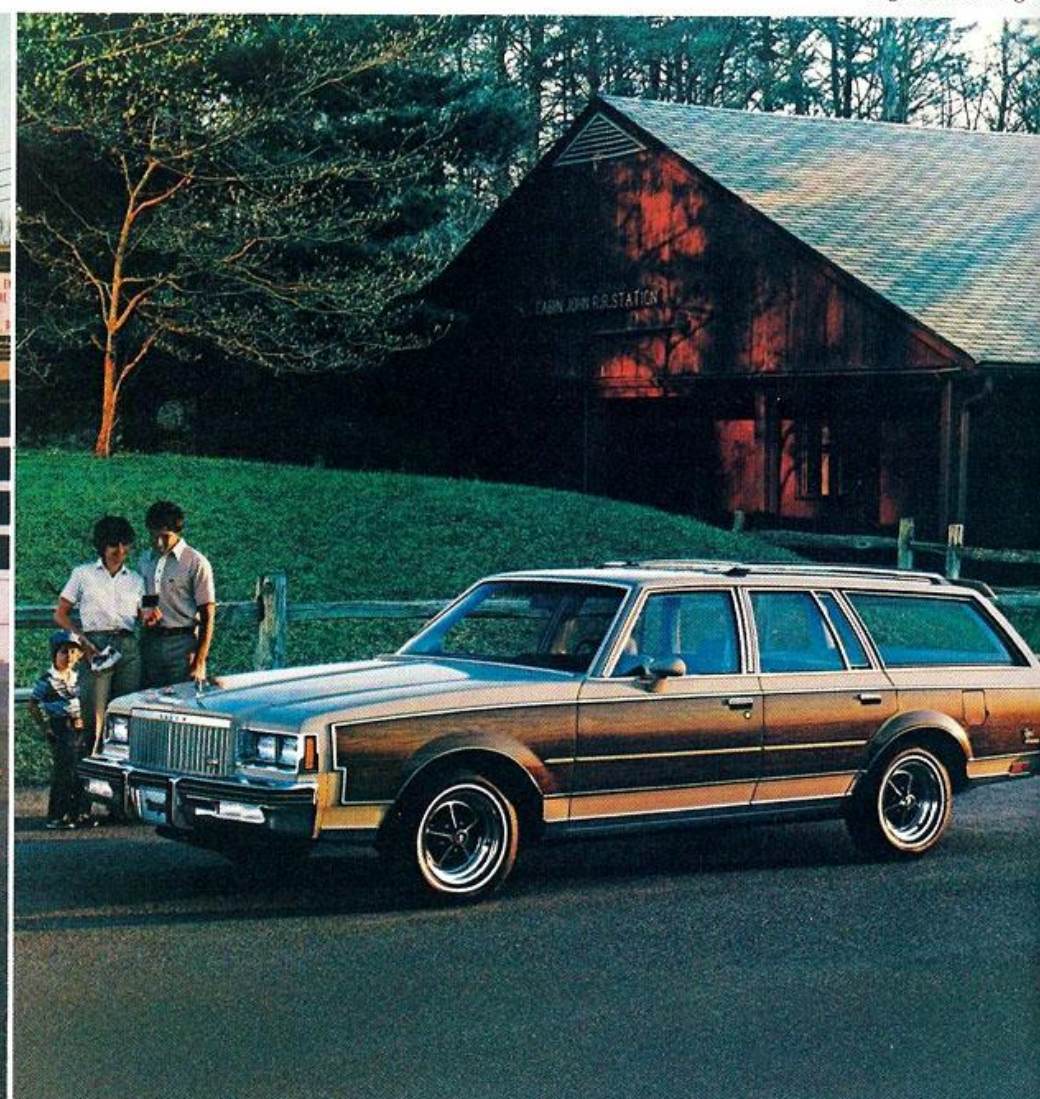
and brakes ease the driving effort. And Regal rides on whitewall steel-belted radials. All standard.

Regal also makes the inside workplace most comfortable, with a choice of cloth or vinyl notchback front seat, or cloth front, vinyl rear seats.

There are four new interior colours available, and seat belt buckles are also colour-coordinated. Instead of a buzzer, a pleasing electronic tone reminds you about keys in the ignition and fastening seat belts.

The Regal Estate Wagon. Every bit as luxurious as a Regal Sedan. As many happy owners agree.

Regal Estate Wagon



When you settle into the seat of a Regal, right away you know that interior comfort and luxury were prime considerations in the designers' minds. You experience deep-cushioned comfort in the Regal or Regal TTYPE standard notchback seat, in either supple vinyl or soft cloth. In Regal Limited, the standard seating is a cloth-trimmed 55/45 notchback, with individual seat adjustments. Available bucket seats, featuring adjustable headrests and seatback recliners are available in



Regal Coupe and Regal TTYPE.

For supreme elegance, consider the available leather-and-vinyl-trimmed seats with cloth-trimmed doors, for both Regal Limited Coupe and Sedan. With any interior, you'll note that even the seat belt buckles are coordinated to the interior colour.

A discreet electronic tone gently reminds you to fasten the seat belt or that your keys are in the ignition. And if you've ever forgotten to turn your headlamps off and have suffered the consequences, you'll be glad to know you can order an available "headlamps on" warning that signals you with a pleasant chime.

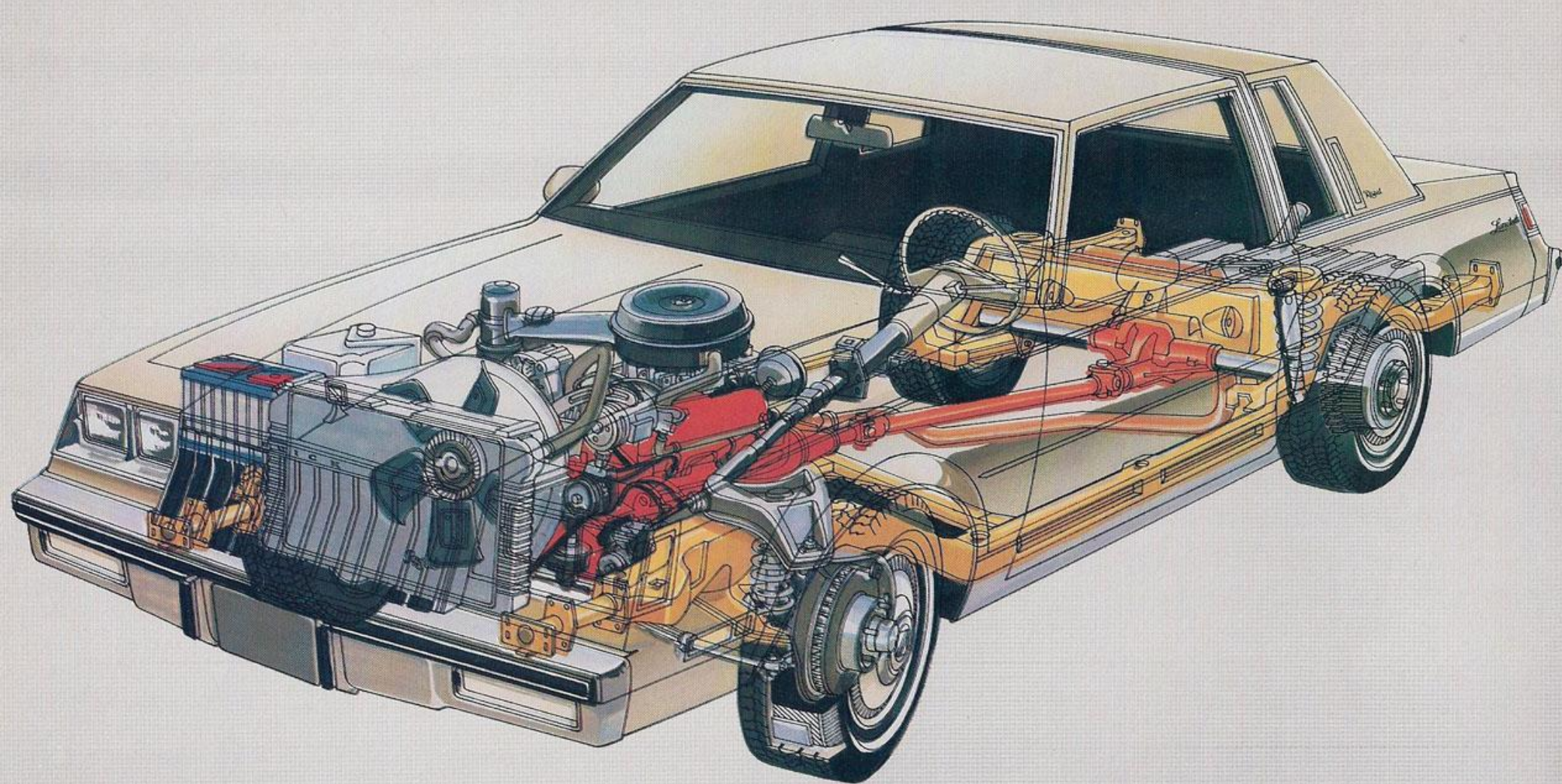
These new features underscore the feelings of comfort and luxury that have made Regal so popular.

Regal Interiors	Cloth or Vinyl Notchback	55/45 Cloth Notchback	Cloth Buckets	55/45 Limited Cloth Notchback	45/45 Leather/Vinyl
Regal	S	A	A*		
Regal TTYPE	S	A	A	A	A†
Regal Limited				S	A†
Regal Estate Wagon‡	S	A			

*Not available on Regal Sedan S—standard
A—available †Cloth trimmed doors ‡rear seat vinyl



Above—Regal Instrument Panel with Available Equipment
Right—Regal Limited Interior



Standard Equipment

Engine/Chassis

- 3.8 litre (231 cid) 2-bbl. V-6 (Regal, Regal Limited, Regal Estate)
- 3.8 litre (231 cid) 4-bbl. turbocharged V-6 (Regal TTYPE)
- Automatic transmission (Regal, Regal Limited, Regal Estate)
- Automatic transmission with overdrive (Regal TTYPE)
- Temperature gauge, turbo boost gauge and trip odometer (Regal TTYPE)
- Cold Climate Package (with available diesel engines)
- Computer Command Control (Regal TTYPE)
- Delco Freedom II Plus Battery
- Fast-ratio power steering (Regal TTYPE)

- Power steering (Regal, Regal Limited, Regal Estate)
- Low-drag power brakes with front disc/rear drum
- Coil-spring suspension—front and rear
- Computer-selected chassis springs
- 3.42 performance axle ratio (Regal TTYPE)
- Steel-belted, radial-ply whitewall tires—P195/75R14 (Regal, Regal Limited, Regal Estate)
- Steel-belted, radial-ply blackwall tires—P205/70R14 (Regal TTYPE)

Comfort and Convenience

- Choice of cloth or vinyl notchback seat (Regal, Regal Estate, Regal TTYPE)
- Cloth 55/45 notchback seat (Regal Limited)

- Right- and left-hand, outside, rearview chrome mirrors (Regal, Regal Limited, Regal Estate)
- Right-hand manual and left-hand remote-control, outside, sport mirrors (Regal TTYPE)
- Lights: front ashtray, instrument panel courtesy, trunk, engine compartment, glove box
- Multi-function control lever with turn signal, headlamp high/low beam control, and windshield washer/wiper control
- Seat belt and ignition key electronic tone warning

Appearance and Protection

- Bumper protective strips—front and rear
- Bumper guards—front and rear
- Deluxe steering wheel (Regal, Regal Estate, Regal TTYPE)
- Custom steering wheel (Regal Limited)
- Colour-coordinated, protective body side mouldings (Regal, Regal Limited, Regal Estate)
- Plastisol paint protection
- Colour-coordinated seat and shoulder belts and buckles
- Deluxe wheel covers (Regal, Regal Limited, Regal Estate)
- Styled aluminum wheels (4) (Regal TTYPE)
- Inside hood lock release

1983 REGAL FACTS & FIGURES

Select the combination of "extras" that make your Buick uniquely yours from the long list of standard and available features, some of which are given below. Ask your dealer about group packages and the many other features not indicated below. Your dealer will also advise you of the availability of the various items on the model of your choice.

	Regal	Regal T Type	Regal Limited	Regal Estate
Engines—3.8 litre V6	S	—	S	S
3.8 litre V6 Turbo	—	S	—	—
4.3 litre V6 Diesel	A	—	A	—
5.0 litre V8	A	—	A	A
5.7 litre V8 Diesel	A	—	A	A
Computer Command Control	—	S	—	—
Transmissions—Automatic	S	—	S	S
Overdrive Automatic	—	S	—	—
Brakes—Power Front Disc/Rear Drum	S	S	S	S
Steering—Power	S	S	S	S
Tires—195/75R x 14 Radial (White)	S	—	S	S
205/70R x 14 Radial (White)	A	S	A	A
(White lettered)	—	A	—	—
Self-Sealing Tires	A	—	A	A
Firm Ride & Handling Suspension	A	—	A	A
Gran Touring Suspension	A	S	A	—
Cruise Control	A	A	A	A
Seats—55/45 Divided	A	A	S	A
45/45 Divided	—	A	A	—
Notchback	S	S	—	S
Bucket Reclining	A	A	—	—
Reclining Pass. Side Only	A	A	A	A
Tilt Steering	A	A	A	A
Moldings—Rocker	S	S	—	S
Wide Rocker	A	A	S	A
Bodyside	S	A	S	S
Power—Seats 6-way	A	A	A	A
Door Locks	A	A	A	A
Deck Release	A	A	A	A
Windows	A	A	A	A
Wheels—Deluxe Covers	S	—	S	S
Wire Covers	A	A	A	A
Chrome Wheels	A	A	A	A
Aluminum Wheels	A	S	A	A
Console—Non Shifting	A	A	A	A
Luggage Compartment Trim	A	A	A	—
Air Conditioning—Manual	A	A	A	A
Automatic	A	A	A	A
Rear Window Defroster	A	A	A	A
Roof Luggage Carrier	—	—	—	A
Rear Air Deflector	—	—	—	A
Roof—Full Vinyl (Sedan)	A	—	A	—
Landau (Coupe)	A	A	A	—
Sunroof (Coupe)	A	A	A	—
Hatchroof (Coupe)	A	A	A	—
Glass—Soft-Ray Tinted	A	A	A	A
Theft Deterrent System	A	A	A	—
Twilight Sentinel	A	A	A	A
Tungsten Halogen Headlamps	A	A	A	A
Gauge Package	A	S	A	A
Radio—AM	A	A	A	A
AM/FM	A	A	A	A
AM/FM Stereo	A	A	A	A
AM/FM Stereo/Cassette	A	A	A	A
Antenna—Power	A	A	A	A
Woodgrain Paneling	—	—	—	A

S-Standard A-Available (extra cost) —Not Available

DIMENSIONS	COUPE		SEDAN		WAGON	
	mm	in	mm	in	mm	in
Wheelbase	2746	108.1	2746	108.1	2746	108.1
Overall Length	5095	200.6	4978	196.0	4996	196.7
Overall Width	1819	71.6	1806	71.1	1809	71.2
Height	1385	55.3	1408	56.2	1435	57.1
Tread, Front/Rear	1486/1466	58.5/57.7	1486/1468	58.5/57.7	1486/1468	58.5/57.8
Headroom, Front/Rear	962/967	37.9/38.1	978/960	38.5/37.8	985/985	38.8/38.8
Legroom, Front/Rear	1086/923	42.8/36.3	1086/965	42.8/36.3	1086/902	42.8/35.9
Shoulder Room, Front/Rear	1442/1425	56.8/56.1	1457/1450	57.4/57.1	1454/1450	57.2/57.1
Hiproom, Front/Rear	1314/1394	51.7/54.9	1326/1412	52.2/55.6	1326/1412	52.2/55.6
Usable Luggage Cap.	462 litres	16.2 cu. ft.	441 litres	15.6 cu. ft.	—	—
Cargo Volume	—	—	—	—	2032 litres	71.8 cu. ft.
Fuel Tank Cap.	68.5 litres	15.0 gal.	68.5 litres	15.0 gal.	68.5 litres	15.0 gal.
Diesel	75.0 litres	18.0 gal.	75.0 litres	18.0 gal.	69.0 litres	15.0 gal.

A word about engines

These Buicks are equipped with GM-built engines produced by various divisions of General Motors Corporation and GM of Canada.

Order Code	Displacement	Carb. bbl.	Cyl.	V.I.N.	*Source	Transmission
LD5	3.8 litre (231 CID)	2	V6	A	(1)	Automatic
LT6	4.3 litre (260 CID)	Diesel	V6	V	(3)	Automatic
LF9	5.7 litre (350 CID)	Diesel	V8	N	(3)	Automatic
LG4	5.0 litre (350 CID)	4	V8	H	(2) (4)	Automatic

Engines available with Computer Command Control (Opt. NB1)

LC8	3.8 litre (231 CID) Turbo	4	V6	3	(1)	Automatic
-----	---------------------------	---	----	---	-----	-----------

*Produced by GM (1) Buick Division USA (2) Chevrolet Division USA (3) Oldsmobile Division USA (4) GM of Canada

†The V.I.N. (Vehicle Identification Number) Engine Code is the eighth entry (letter or numeral) from the left on the vehicle serial number plate. The vehicle serial number plate is located on the top portion of the driver's side of the instrument panel and can be viewed from the exterior of the car by looking through the windshield.

STANDARD FEATURES ON ALL BUICKS

SAFETY FEATURES

OCCUPANT PROTECTION • Manual lap/shoulder belts with pushbutton buckles for driver and right front passenger (driver side includes visual and audible warning system). Manual lap belt at center position, when applicable • Manual lap belts with pushbutton buckles at rear passenger positions including center, when applicable • Energy-absorbing steering column • Passenger-guard inside door locks • High strength safety door latches and hinges • Inertia-type folding front seat back latches • Energy-absorbing instrument panel and front seat back tops • Laminated safety glass windshield/tempered safety glass side and rear windows • Safety armrests • Standardized identification symbols for controls and displays • Front seat head restraints for driver and right front passenger (adjustable or integral) • Glove box door latch and, when applicable, console cover latch impact security • Smooth contoured door and window regulator handles • Pressure lock radiator cap.

ACCIDENT AVOIDANCE • Side marker lights and reflectors • Parking lamps that illuminate with headlamps • Four-way hazard warning flasher • Backup lights • Lane change feature in direction signal control • Windshield defrosters, washer and dual speed wipers • Vinyl-bonded inside mirror glass • Outside left rearview mirror • Dual master cylinder brake system with warning light • Starter safety switch • Dual action safety hood latch • Low glare finish on instrument panel top, inside windshield moldings, wiper arms and blades, and steering wheel metallic surfaces • Safety road wheel rims • Front disc brakes with audible wear indicators • Self-adjusting brakes • Illumination of heater and defroster controls on instrument panel • Illumination of windshield wiper and washer controls (when located on instrument panel) • Pressure relief fuel cap.

ANTI-THEFT • Audible anti-theft ignition key reminder • Anti-theft steering column lock • Inside hood release • Anti-theft key system (one key for ignition only, second key for doors, trunk/hatch/tailgate and glove compartment) • Visible vehicle identification number.

MODEL LINEUP

Regal—2-Door Coupe/4-Door Sedan

Regal T Type—2-Door Coupe

Regal Limited—2-Door Coupe/4-Door Sedan

Regal Estate—4-Door Estate Wagon

A word about assembly, components, and optional equipment in these vehicles.

The vehicles described in this brochure are assembled at various Divisions of General Motors Corporation. These vehicles incorporate thousands of different components produced by General Motors of Canada Limited and related companies and their suppliers. From time to time during the manufacturing process, it may be necessary, in order to meet public demand for particular vehicles or equipment, or to meet federally mandated emission and safety requirements or fuel economy guidelines, or for other reasons, to produce vehicles with different components or differently sourced components than initially scheduled. All such components have been approved for use in our products by General Motors of Canada Limited or related companies and will provide the quality performance associated with our name.

Please note that certain optional equipment can be ordered only in conjunction with other optional equipment.

Also, upgrading from specified standard equipment may be necessary when certain optional equipment is ordered. Ask your sales representatives for details.

With respect to extra cost optional equipment, make certain you specify the type of equipment you desire on your vehicle when ordering it from your dealer. Some options may be unavailable when your car is built. Your dealer receives advice regarding current availability of options. You may ask the dealer for this information. GM also requests the dealer to advise you if an option you ordered is unavailable. We suggest you verify that your car includes the optional equipment you ordered or, if there are changes, that they are acceptable to you.

All illustrations and specifications contained in this catalogue are based on the latest product information available at time of publication approval. The right is reserved to make changes at any time, without notice, in prices, colours, materials, equipment, specifications and models, and to discontinue models. Some of the equipment shown or described throughout this catalogue is available at extra cost. Check with your dealer for complete information.

BUICK
Today's the day.