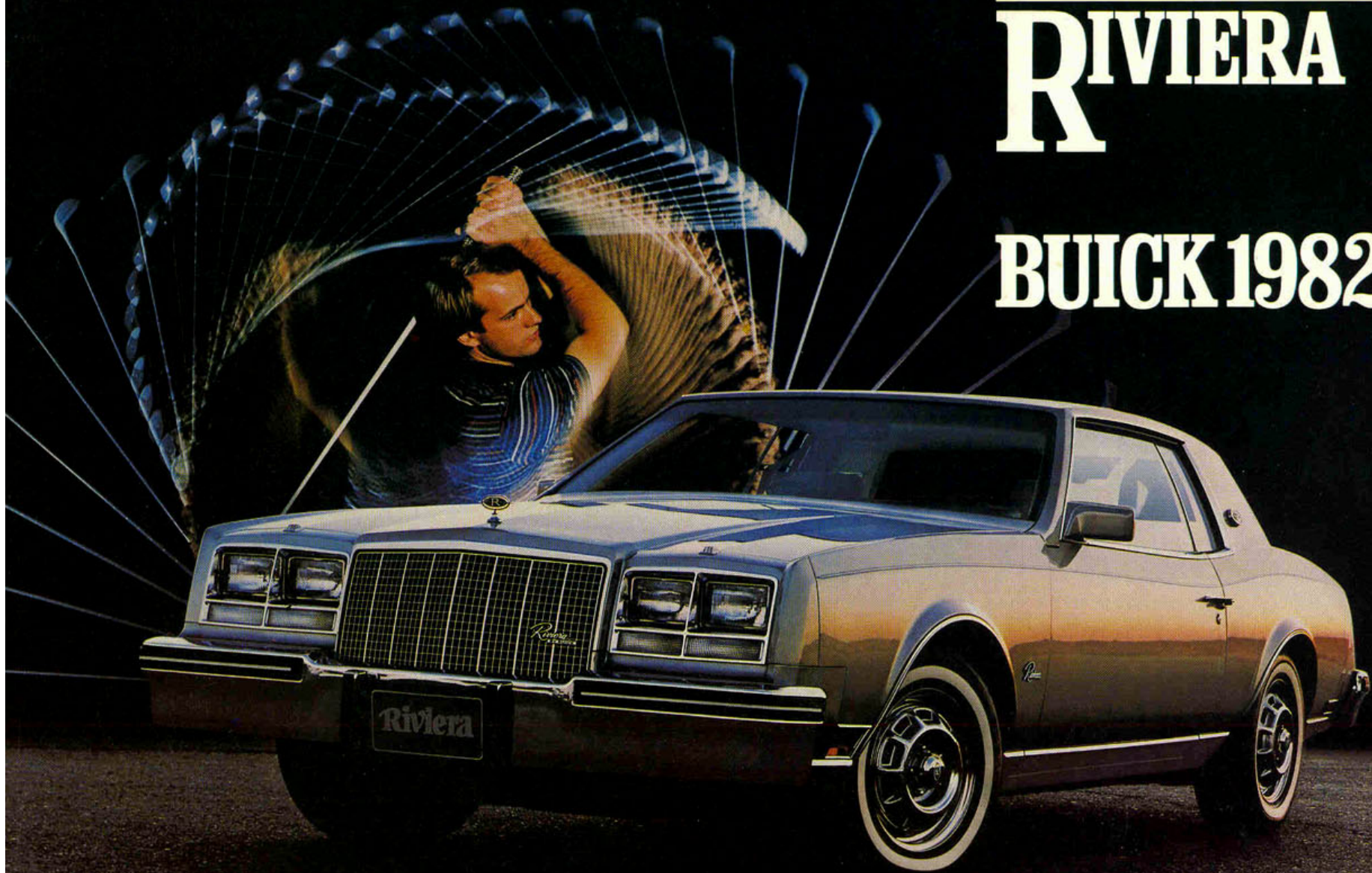


**RIVIERA**

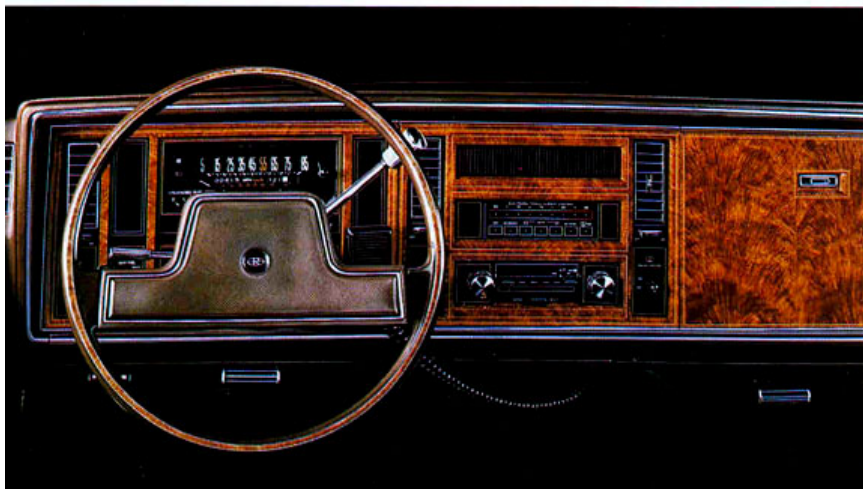
**BUICK 1982**











# T

HE STUNNING RIVIERA PROFILE is one of the most instantly-recognized on the road today. And 1982 Riviera makes a definitive statement about the person who owns it. That person is interested in a car that combines personal luxury, performance, and efficiency.

You can take this fine automobile one of two ways: the unique standard model or the exciting T-type which offers a premium in ride and handling for the driving enthusiast.

The suspension on T-type gives quicker steering feel and increased road feedback compared to Riviera. Combined with Riviera's already sophisticated, fully independent suspension, we think you'll agree that T-type has been well-executed.

The aerodynamic lines of Riviera have been engineered down to the smallest detail, such as a flush-mounted windshield and rear window for a clean, uncluttered look.

Inside Riviera, five passengers enjoy amenities assumed of a car of this stature. Naturally, some refinements have been brought into play for 1982.

Riviera's standard cruise control, for example, includes an automatic resume feature that returns the selected speed after you have braked for traffic. A cruise control memory light indicates when it is in operation.

Riviera was the first Buick to incorporate front-wheel drive and so is designed to slip through the air easily and efficiently while holding tightly to the road. Automatic transmission with overdrive is standard on '82 Riviera. Four-wheel independent suspension makes for excellent road-holding ability. Base engine in the standard Riviera is Buick's powerful and efficient 4.1 litre V6. T-type gets Buick's famous 3.8 litre Turbo V6 as base. Available engines are the 5.0 litre V8 and 5.7 litre V8 diesel.

Of course, Riviera offers Buick's electronic Touch Climate Control. This highly-refined option allows interior climate to be specified by the merest touch of the control units, and then maintained

automatically, regardless of the weather.

And, because you'll expect outstanding sound, Riviera plays on. An AM/FM stereo radio is standard, with cassette, 8-track and CB combinations and 4-speaker extended range or 6-speaker Concert Sound available.

Riviera also offers a six-way power seat on the driver's side as standard equipment. This year, a new available feature is the Memory Seating which allows you to preset two different seat locations. For two drivers, each may adjust to their chosen driving position. To ease exit and entry you move the seat all the way back. Then, once seated, you push the Memory switch and the seat returns to whichever of the two preset positions you have asked for.

From its aerodynamic design to its superb engineering, from its comfortable and glamorous interior to its state-of-the-art computerized technology, from its extensive list of standard features to its highly-refined options, your 1982 Riviera is, we feel, one of the best designed and best constructed cars around. After a test drive, we think you'll feel the same. And because Buick wants these good looks retained, we've provided Riviera with extensive anti-corrosion measures. Two steps are taken to help protect Riviera from our changeable weather. First, we designed-out areas critical to corrosion damage by providing drainage and eliminating pockets that collect moisture and debris. Second, we designed-in structural materials and barriers that are especially impervious to corrosion. In addition, we used many final finishing procedures like zinc-rich primers and Plastisol lower-body gravel protection to help your Riviera keep its good looks longer. Ask your Buick dealer about the unlimited mileage, three-year Perforation-from-Corrosion Limited Warranty. And get the details and information about GM's 24-month/24,000-mile Power Protection Plus Limited Warranty on the powertrain.

For added peace-of-mind motoring, be sure to ask about the available GM Continuous Protection Plan option.

*Centre—Riviera 45/45 seats.*

*Bottom—Instrument panel with available equipment.*

*Speedometers in Canada have major scale in km/h, secondary in MPH and odometer in kilometres.*



## 1982 RIVIERA FACTS & FIGURES

Select the combination of "extras" that make your Buick uniquely yours from the long list of standard and available features, some of which are given below. Ask your dealer about group packages and the many other features not indicated below. Your dealer will also advise you of the availability of the various items on the model of your choice.

	Riviera	T-Type
Engines—4.1 litre V6	S	A
5.0 litre V8	A	A
3.8 litre V6 Turbo	A	S
5.7 litre V8 Diesel	A	—
Computer Command Control	S	S
Transmissions—Overdrive Automatic	S	S
Brakes—Front Disc/Rear Drum	S	S
Rear Disc	A	A
Power	S	S
Steering—Power	S	S
Tires—205/75R15 Radial (white)	S	A
GR70x15 Radial (white)	A	S
Self Sealing Tires	A	A
Full Coil Suspension	S	S
Firm Ride and Handling Suspension	A	—
Gran Touring Suspension	A	S
Stabilizer Bars—Front & Rear	S	S
Cruise Control	S	S
Seats—45/45 Divided	S	S
Reclining—Power	A	A
Steering Wheel—Sport	A	S
Tilt Steering	A	A
Tilt and Telescoping	A	—
Moldings—Rocker	S	S
Wheel Opening	S	S
Windowsill	S	S
Roof Drip	S	S
Door Edge	A	A
Bodyside	A	A
Power—Seats 6-way	S	S
Door Locks	S	S
Deck Release	A	A
Windows	S	S
Fuel Cap Lock	A	A
Wheels—Deluxe Covers	S	—
Sport Covers	—	S
Wire Covers	A	A
Chrome Wheels	A	A
Stripes—Accent	A	S
Console Non-Shifting Storage	S	S
Air Conditioning—Manual	S	S
Automatic	A	A
Rear Window Defroster	S	S
Roof—Landau	A	A
Sunroof	A	A
Glass—Soft-Ray Tinted	S	S
Compact Spare	S	S
High Energy Ignition	S	S
Cigarette Lighter	S	S
Dual Horns	S	S
Controlled-Cycle Wipers	A	A
Theft Deterrent System	A	A

	Riviera	T-Type
Twilight Sentinel	A	A
Paint—Two-tone	A	A
Firemist	A	A
Tungsten Halogen Headlamps	A	S
Clock—Digital	S	S
Radio—AM/FM Stereo	S	S
AM/FM Stereo/Cassette	A	A
AM/FM Stereo/CB	A	A
Concert Sound Speakers	A	A
Antenna—Power	S	S
Bumper Guards	S	S

S—Standard A—Available — Not Available

## DIMENSIONS

	Coupe	
	mm	in
Wheelbase	2895	114.0
Overall Length	5247	206.6
Overall Width	1848	72.7
Height	1376	54.1
Tread—Front	1506	59.3
Rear	1524	60.0
Headroom, Front/Rear	962/962	37.9/37.9
Legroom, Front/Rear	1088/987	42.8/38.9
Shoulder Room, Front/Rear	1434/1420	56.5/55.9
Hiproom, Front/Rear	1363/1245	53.7/49.0
Usable Luggage Cap.	447 litres	15.8 cu. ft.
Fuel Tank Cap.	79 litres	17.4 gal.

## A word about engines.

These Buicks are equipped with GM-built engines produced by various divisions of General Motors Corporation and GM of Canada.

Order Code	Displacement	Carb. bbl	Cyl.	†V.I.N.	*Source	Transmission
LC4	4.1 litre (252 CID)	4	V6	4	(1)	Overdrive Automatic
LV2	5.0 litre (307 CID)	4	V8	Y	(2)	Overdrive Automatic
LC8	3.8 litre (231 CID) Turbo	4	V6	3	(1)	Overdrive Automatic
LF9	5.7 litre (350 CID) Diesel	V8	N	(2)		Overdrive Automatic

Computer Command Control (Opt. NB1)—Standard on all engines

\*Produced by GM. (1) Buick Division USA (2) Oldsmobile Division USA

†The V.I.N. (Vehicle Identification Number) Engine Code is the eighth entry (letter or numeral) from the left on the vehicle serial number plate. The vehicle serial number plate is located on the top portion of the driver's side of the instrument panel and can be viewed from the exterior of the car by looking through the windshield.

## STANDARD FEATURES ON ALL BUICKS

### SAFETY FEATURES

OCCUPANT PROTECTION • Manual lap belts with pushbutton buckles for rear and center front (when applicable) passenger positions • Manual lap/shoulder belts with pushbutton buckles for driver and right front passenger (driver side includes visual and audible warning system) • Energy-absorbing steering column • Passenger-guard door locks • Safety door latches and stamped steel hinges • Folding seat back latches • Energy-absorbing

padded instrument panel and front seat back tops • Laminated windshield/tempered side and rear glass • Safety armrests • Identification symbols for controls and displays • Glove box and console door latch impact security • Smooth contoured door and window regulator handles • Automatic locking rear outboard seat belt retractors • Pressure lock radiator cap.

ACCIDENT AVOIDANCE • Side marker lights and reflectors • Parking lamps that illuminate with headlamps • Four-way hazard warning flasher • Backup lights • Lane change feature in direction signal control • Windshield defrosters, washers and dual-speed wipers • Vinyl-edged inside mirror • Outside rear view mirror • Dual master cylinder brake system with warning light • Starter safety switch • Dual action safety hood latches • Low glare finish on instrument panel top, inside windshield moldings, wiper arms and blades, and steering wheel metallic surfaces • Safety wheel rims • Front disc brakes with audible wear indicators • Self-adjusting brakes • Illumination of heater and defroster controls on instrument panel • Pressure relief gas cap.

ANTI-THEFT • Anti-theft ignition key reminder buzzer • Anti-theft steering column lock • Visible vehicle identification number • Anti-theft key system (one key for ignition only, other key for glove compartment, doors, trunk and tailgate).

## MODEL LINEUP

Riviera—2-door Coupe

Riviera T-Type—2-door Coupe

## A word about assembly, components, and optional equipment in these vehicles.

The vehicles described in this brochure are assembled at various Divisions of General Motors Corporation. These vehicles incorporate thousands of different components produced by General Motors of Canada Limited and related companies and their suppliers. From time to time during the manufacturing process, it may be necessary, in order to meet public demand for particular vehicles or equipment, or to meet federally mandated emission and safety requirements or fuel economy guidelines, or for other reasons, to produce vehicles with different components or differently sourced components than initially scheduled. All such components have been approved for use in our products by General Motors of Canada Limited or related companies and will provide the quality performance associated with our name.

Please note that certain optional equipment can be ordered only in conjunction with other optional equipment.

Also, upgrading from specified standard equipment may be necessary when certain optional equipment is ordered. Ask your sales representatives for details.

With respect to extra cost optional equipment, make certain you specify the type of equipment you desire on your vehicle when ordering it from your dealer. Some options may be unavailable when your car is built. Your dealer receives advice regarding current availability of options. You may ask the dealer for this information. GM also requests the dealer to advise you if an option you ordered is unavailable. We suggest you verify that your car includes the optional equipment you ordered or, if there are changes, that they are acceptable to you.

All illustrations and specifications contained in this catalogue are based on the latest product information available at time of publication approval. The right is reserved to make changes at any time, without notice, in prices, colours, materials, equipment, specifications and models, and to discontinue models. Some of the equipment shown or described throughout this catalogue is available at extra cost. Check with your dealer for complete information.

At General Motors,  
we're committed to leadership  
in fuel efficiency.



Printed in Canada GM-4240