

LeSABRE

BUICK 1982



LUXURIOUS AND EFFICIENT.

Those are the operative words for LeSabre in 1982. Luxurious inside and out with many fine details. Efficiency in a full six-passenger car.

We've given LeSabre an exciting aerodynamic design whose purpose is to help LeSabre slip through the air easily while holding tightly to the road.

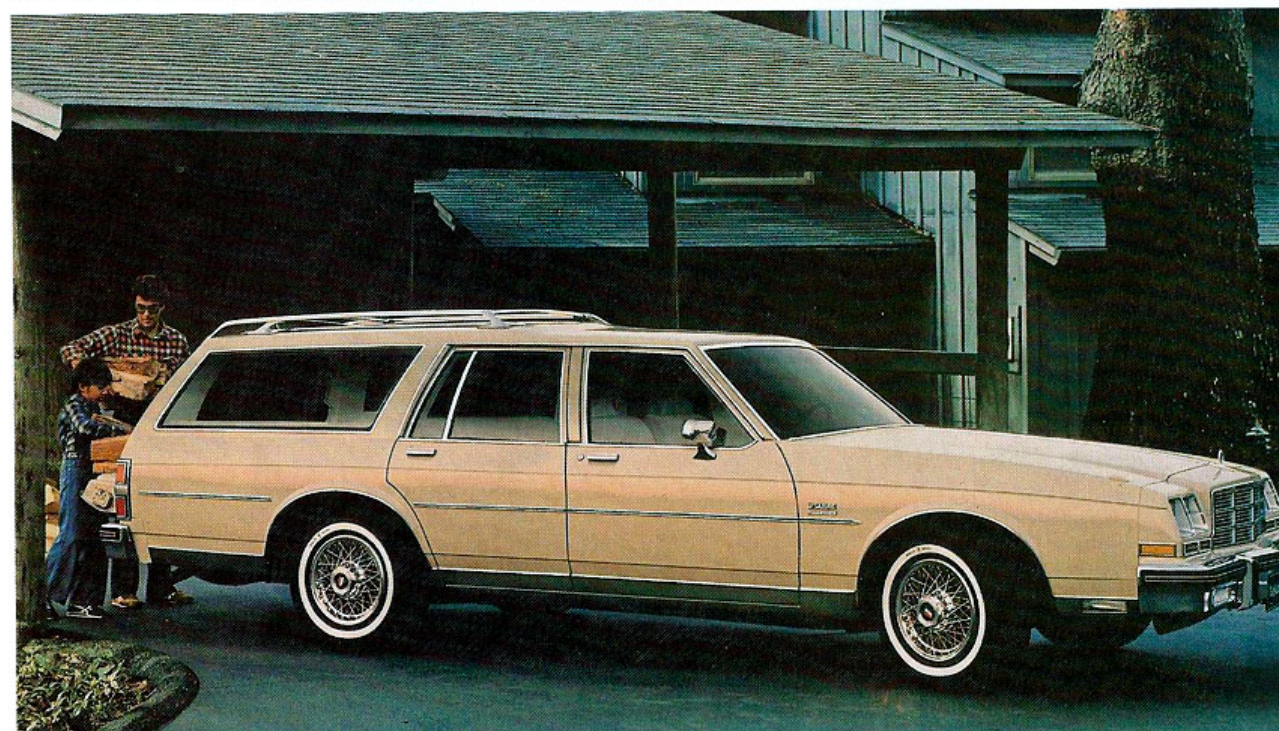
Efficiency can also be translated as a roomy trunk. The comfort of a long wheelbase and all-coil spring suspension. Low-rolling resistance tires that hold the road firmly while offering less resistance to forward motion.

A Plastisol finish to protect the lower areas against gravel and other debris.

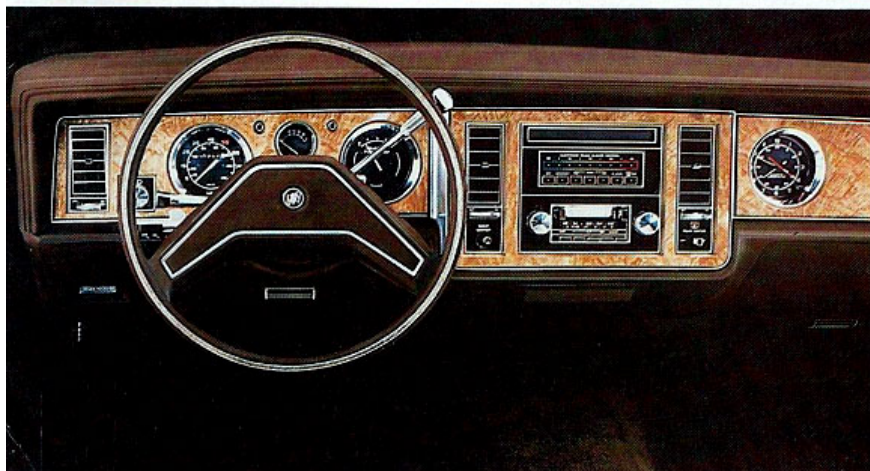
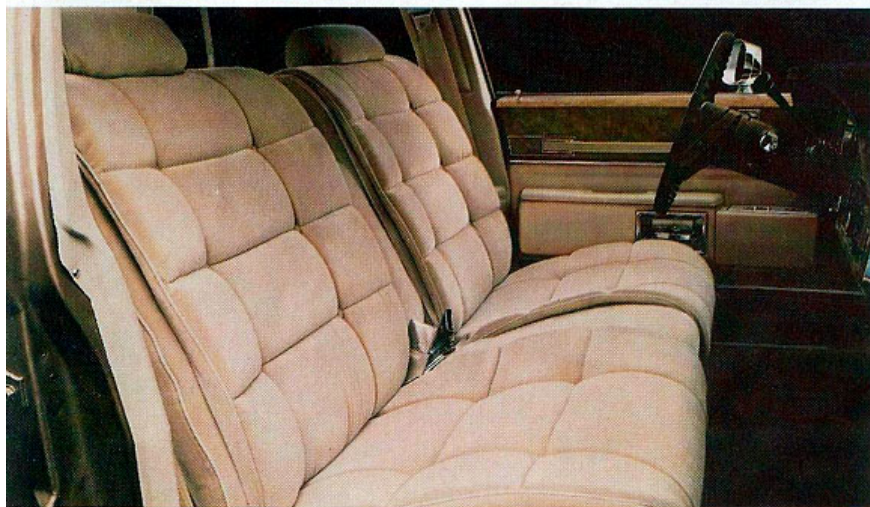
LeSabre. A car most worthy of the name Buick.

We'd like to introduce LeSabre drivers to a new nameplate this year, the Custom. It enjoys many additional standard features. For example, tinted glass, whitewalls, courtesy light, and a multi-function lever.

The engine choice for LeSabre Custom and Limited lists the 3.8 litre V6 with automatic transmission as standard. Or you can pick the available 4.1 litre V6, the 4.4 or 5.0 litre V8. The 5.7 litre diesel V8 continues to be available.



Cover—LeSabre Limited Sedan
Top—LeSabre Custom Coupe
Bottom—LeSabre Estate Wagon



LeSabre offers Buick's electronic touch climate control. At the mere touch of the control unit, the interior climate can be selected and then maintained automatically regardless of what the weather is like outside the car.

For sound almost as rich as you'd get at home, LeSabre offers a broad selection of electronically-tuned AM/FM stereo radio/tape units and extended-range speakers for the ultimate in custom-tailored automotive sound systems.

We've made automatic door locks available for added security and convenience. An available automatic trunk release controlled from the front seat. A resume-speed feature on Cruise-Master speed control that's available.

This year as in the past, comfort is standard. With any LeSabre, the notchback front seat with fold-down armrest is standard. The carpeting is thick and plush. The rear seat is equally comfortable.

LeSabre Custom or LeSabre Limited. Cars that speak of luxury and efficiency. Cars that address the needs of many of today's drivers. Perhaps yours.

Because Buick has always believed that driving a station wagon doesn't preclude comfort, the LeSabre Estate Wagon brings the full-size comfort you want together with the

full-size carrying capacity you need. And quite exquisitely too, we think.

LeSabre Estate Wagon offers a full 87.9 cubic feet of cargo area, with the rear seat folded down.

Up front, in the people-carrying department, LeSabre Wagon really shines. The seat construction makes lavish use of thick foam for settle-back comfort whether you're car-pooling or crossing the country.

And standard comforts? Consider power steering, front disc brakes, whitewalls, power tailgate window, and a lockable hidden storage compartment.

Because full-size wagons need muscle, the standard power is a 5.0 litre V8 with automatic transmission. Or choose that transmission with overdrive. A 5.7 litre diesel V8 with conventional automatic transmission is also available.

In a LeSabre Estate Wagon, comfort and utility drive hand in hand.

Ask your Buick dealer about the unlimited mileage, three-year Perforation-from-Corrosion Limited Warranty. And get the details and information about GM's 24-month/24,000-mile Power Protection Plus Limited Warranty on the powertrain.

For added peace-of-mind motoring, be sure to ask about the available GM Continuous Protection Plan option.

Top—LeSabre Limited Coupe
Centre—LeSabre Limited notchback seat
Bottom—Instrument panel with available equipment

Speedometers in Canada have major scale in km/h, secondary in MPH and odometer in kilometres.

1982 LESABRE FACTS & FIGURES

Select the combination of "extras" that make your Buick uniquely yours from the long list of standard and available features, some of which are given below. Ask your dealer about group packages and the many other features not indicated below. Your dealer will also advise you of the availability of the various items on the model of your choice.

	Custom	Limited	Estate
Engines—3.8 litre V6	S	S	-
4.1 litre V6	A	A	-
4.4 litre V8	A	A	-
5.0 litre V8	A	A	S
5.7 litre V8 Diesel	A	A	A
Computer Command Control	A	A	A
Transmissions—Automatic	S	S	S
Overdrive Automatic	A	A	A
Brakes—Power Front Disc/Rear Drum	S	S	S
Steering—Power	S	S	S
Tires—205/75Rx15 Radial (White)	S	S	-
215/75Rx15 Radial (White)	A	A	-
225/75Rx15 Radial (White)	-	-	S
225/70Rx15 Radial (White)	A	A	-
Self-Sealing Tires	A	A	A
Firm Ride and Handling Suspension	A	A	A
Gran Touring Suspension	A	A	-
Limited Slip Axle	A	A	A
Cruise Control	A	A	A
Seats—Notchback	S	S	S
55/45 Divided	A	A	A
Reclining—Power	A	A	A
Steering Wheel—Sport	A	A	A
Tilt Steering	A	A	A
Tilt & Telescoping	A	A	A
Moldings—Rocker	S	S	S
Wheel Opening	S	S	S
Bodyside	S	S	A
Power—Seats 6-way	A	A	A
Door Locks	A	A	A
Deck Release	A	A	A
Windows	A	A	A
Fuel Cap Lock	A	A	-
Wheels—Deluxe Covers	S	S	S
Wire Covers	A	A	A
Chrome Wheels	A	A	A
Styled Aluminum	A	A	A
Stripes—Accent	A	A	-
Air Conditioning—Manual	A	A	S
Automatic	A	A	A
Rear Window Defroster	S	S	S
Roof—Full Vinyl	A	A	-
Landau—Coupe	A	A	-
Sunroof	A	A	-
Woodgrain Paneling	-	-	A
Glass—Soft-Ray Tinted	A	S	S
Carrier—Roof Luggage	-	-	A
Theft Deterrent System	A	A	-
Twilight Sentinel	A	A	A
Tungsten Halogen Headlamps	A	A	A
Radio—AM	A	A	A
AM/FM	A	A	A
AM/FM Stereo	A	A	A
AM/FM Stereo/Cassette	A	A	A
AM/FM Stereo/CB	A	A	A
Antenna—Power	A	A	A

S—Standard A—Available --Not Available

DIMENSIONS	COUPE		SEDAN		WAGON	
	mm	in	mm	in	mm	in
Wheelbase	2945	115.9	2945	115.9	2945	115.9
Overall Length	5547	218.4	5547	218.4	5600	220.5
Overall Width	1935	76.2	1935	76.2	2014	79.3
Height	1443	56.8	1460	57.5	1514	59.6
Tread, Front/Rear	1570/1542	61.8/60.7	1570/1542	61.8/60.7	1580/1626	62.2/64.0
Headroom, Front/Rear	985/974	38.8/38.3	1003/971	39.5/38.2	1006/999	39.6/39.3
Legroom, Front/Rear	1072/972	42.2/38.3	1072/988	42.2/38.9	1071/959	42.2/37.8
Shoulder Room, Front/Rear	1539/1497	60.6/58.9	1532/1550	60.3/61.0	1534/1548	60.4/60.9
Hiproom, Front/Rear	1398/1474	55.0/58.0	1398/1405	55.0/55.3	1400/1398	55.1/55.0
Usable Luggage Cap.	589 litres	20.8 cu.ft.	589 litres	20.8 cu.ft.	-	-
Cargo Volume (Rear Seat Down)	-	-	-	-	2488 litres	87.9 cu.ft.
Fuel Tank Cap.	95 litres	20.8 gal.	95 litres	20.8 gal.	83.3 litres	18.3 gal.
Diesel	102 litres	22.4 gal.	102 litres	22.4 gal.	83.3 litres	18.3 gal.

A word about engines.

These Buicks are equipped with GM-built engines produced by various divisions of General Motors Corporation and GM of Canada.

Order Code	Displacement	Carb. bbl	Cyl.	†V.I.N. *Source	Transmission
Engines available without Computer Command Control (Opt. NB1)					
LD5	3.8 litre (231 CID)	2	V6	A (1)	Automatic
L39	4.4 litre (267 CID)	2	V8	J (2) (4)	Automatic
LV2	5.0 litre (307 CID)	4	V8	Y (3)	Automatic
LF9	5.7 litre (350 CID)	Diesel	V8	N (3)	Automatic
Engines available with Computer Command Control (Opt. NB1)					
LC4	4.1 litre (252 CID)	4	V6	4 (1)	Automatic, Overdrive Automatic
LV2	5.0 litre (307 CID)	4	V8	Y (3)	Automatic, Overdrive Automatic

*Produced by GM (1) Buick Division USA (2) Chevrolet Division USA (3) Oldsmobile Division USA (4) GM of Canada

†The V.I.N. (Vehicle Identification Number) Engine Code is the eighth entry (letter or numeral) from the left on the vehicle serial number plate. The vehicle serial number plate is located on the top portion of the driver's side of the instrument panel and can be viewed from the exterior of the car by looking through the windshield.

STANDARD FEATURES ON ALL BUICKS

SAFETY FEATURES

OCCUPANT PROTECTION • Manual lap belts with pushbutton buckles for rear and center front (when applicable) passenger positions • Manual lap/shoulder belts with pushbutton buckles for driver and right front passenger (driver side includes visual and audible warning system) • Energy-absorbing steering column • Passenger-guard door locks • Safety door latches and stamped steel hinges • Folding seat back latches • Energy-absorbing padded instrument panel and front seat back tops • Laminated windshield/tempered side and rear glass • Safety armrests • Identification symbols for controls and displays • Glove box and console door latch impact security • Smooth contoured door and window regulator handles • Automatic locking rear outboard seat belt retractors • Pressure lock radiator cap.

ACCIDENT AVOIDANCE • Side marker lights and reflectors • Parking lamps that illuminate with headlamps • Four-way hazard warning flasher • Backup lights • Lane change feature in direction signal control • Windshield defrosters, washers and dual-speed wipers • Vinyl-edged inside mirror • Outside rear view mirror • Dual master cylinder brake system with warning light • Starter safety switch • Dual action safety hood latches • Low glare finish on instrument panel top, inside windshield moldings, wiper arms and blades, and steering wheel metallic surfaces • Safety wheel rims • Front disc brakes with audible wear indicators • Self-adjusting brakes • Illumination of heater and defroster controls on instrument panel • Pressure relief gas cap.

ANTI-THEFT • Anti-theft ignition key reminder buzzer • Anti-theft steering column lock • Visible vehicle identification number • Anti-theft key system (one key for ignition only, other key for glove compartment, doors, trunk and tailgate).

MODEL LINEUP

LeSabre Custom—2-door Coupe/4-door Sedan

LeSabre Limited—2-door Coupe/4-door Sedan

LeSabre Estate Wagon—4-door Estate Wagon

A word about assembly, components, and optional equipment in these vehicles.

The vehicles described in this brochure are assembled at various Divisions of General Motors Corporation. These vehicles incorporate thousands of different components produced by General Motors of Canada Limited and related companies and their suppliers. From time to time during the manufacturing process, it may be necessary, in order to meet public demand for particular vehicles or equipment, or to meet federally mandated emission and safety requirements or fuel economy guidelines, or for other reasons, to produce vehicles with different components or differently sourced components than initially scheduled. All such components have been approved for use in our products by General Motors of Canada Limited or related companies and will provide the quality performance associated with our name.

Please note that certain optional equipment can be ordered only in conjunction with other optional equipment.

Also, upgrading from specified standard equipment may be necessary when certain optional equipment is ordered. Ask your sales representatives for details.

With respect to extra cost optional equipment, make certain you specify the type of equipment you desire on your vehicle when ordering it from your dealer. Some options may be unavailable when your car is built. Your dealer receives advice regarding current availability of options. You may ask the dealer for this information. GM also requests the dealer to advise you if an option you ordered is unavailable. We suggest you verify that your car includes the optional equipment you ordered or, if there are changes, that they are acceptable to you.

All illustrations and specifications contained in this catalogue are based on the latest product information available at time of publication approval. The right is reserved to make changes at any time, without notice, in prices, colours, materials, equipment, specifications and models, and to discontinue models. Some of the equipment shown or described throughout this catalogue is available at extra cost. Check with your dealer for complete information.

At General Motors,
we're committed to leadership
in fuel efficiency.

