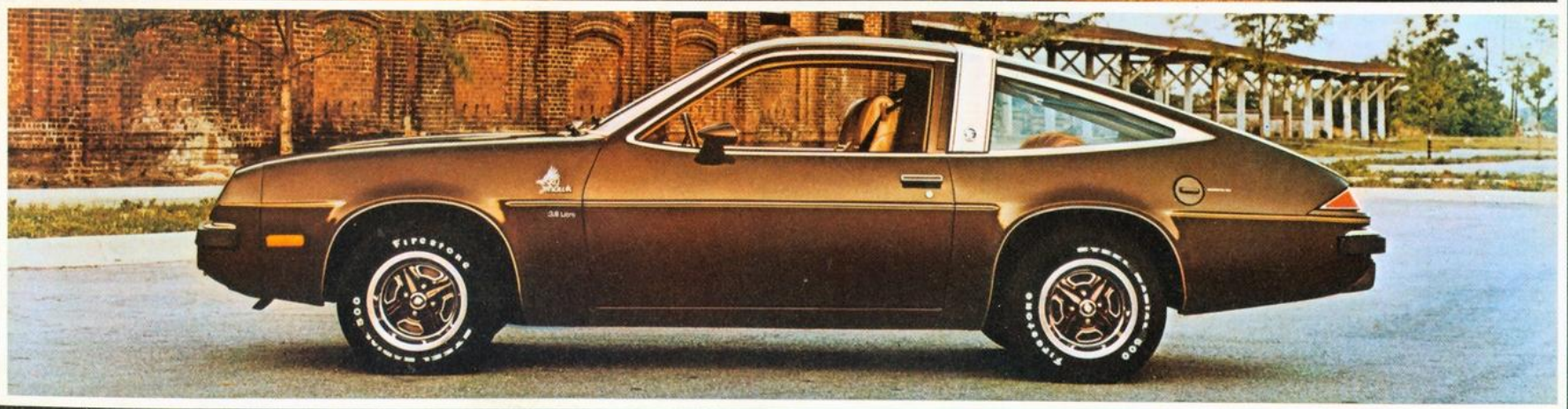


Buick

Skylark, Skyhawk 1978



Skylark at a glance.

You're just married, out of law school, and hanging out your shingle. And although the last year has been pretty hectic, your new life looks darn promising from where you're standing. You got the apartment you wanted. And, after a lot of hard-nosed shopping around, you found the car that suits your needs to a tee. A Buick Skylark. A compact, sure. But Skylark's a compact with *real* room. And maybe the styling had a little to do with catching your eye.

Buick offers seven Skylark models in all. There are standard and Custom models, both of which can be ordered in Coupe, Sedan or Hatchback body styles. Then there's Skylark "S", a special economy model offered only as a Coupe.

Skylark "S" is our budget-priced model, while the standard Skylark features additional comfort and convenience items. And if you order a Skylark Custom, you get extras found on more expensive cars, like full wheel covers and armrests. In fact, there's a selection of available equipment that lets you outfit Skylark Custom in the manner of a fine European touring Sedan: velour-covered bucket seats, a sport shifting console, steel-belted radial-ply tires, even a Rallye steering wheel. Some compact, wouldn't you say?

Of course, all Skylark models have a generous supply of fine Buick features in common. Standard power is provided by a 3.8 litre (231 CID) even-firing V6, and a 5.0 litre (305 CID) V8 is available.

The standard transmission is a 3-speed manual, with an automatic available. [See the chart on page 8 for specific availabilities.]

Other nice Skylark touches include tall, generous-sized windows. A maintenance free Freedom Battery. And a large 14.5-gallon fuel tank.

And one more thing. If you order Skylark as a Hatchback, you get 29 cubic feet of cargo space. That means you can haul more gear than most full-size sedans and coupes.

The 1978 Skylark. Small enough to offer practicality and manoeuvrability. Large enough to provide genuine Buick comfort for passengers.

Cover: Top: Skylark Custom Coupe. Comfort and convenience in a very practical compact size.

Bottom: Skyhawk Hatchback Coupe.



Some of the equipment shown or mentioned is optional at extra cost.

Foreground: Skylark Hatchback. Rear: Skylark Custom Sedan.

2

Skyhawk at a glance.

Introduced in 1975, the Skyhawk remains a bold, graceful, alert automobile three years later. A car fairly brimming with individuality.

It possesses a rakish, aerodynamic look. Rectangular headlamps. Domed hood. Louvered roof pillars.

Skyhawk power is provided by a gutsy 3.8 litre (231 CID) even-firing V6. An engine designed to be smooth, and responsive.

Suspension includes front and rear stabilizer bars. And four-wheel coil springs. Add to this a nimble 97-inch wheelbase, and agility becomes Skyhawk's middle name.

Transmission-wise, you have three choices. The standard 4-speed manual. An available automatic. Or an available 5-speed overdrive. [Note the power-team chart on page 9.]

Sounds like a pretty hot little number, doesn't it? Well, it is. But you may rest assured that for all its fun and sportiness, Skyhawk is also an eminently practical mode of transportation.

There are added GM enhancements. Like High-Energy Ignition. Which means there are no ignition points to replace. And a Delco Freedom Battery that never needs water—or maintenance for that matter.

Right: Skyhawk. A sporty little hatchback with nearly 29 cubic feet of cargo space, V6 power, and an appetite for the open road.



Some of the equipment shown or mentioned is optional at extra cost.

3

4

5

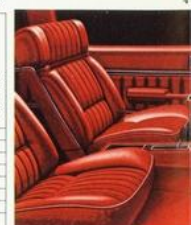
Skyllark inside.

For a compact, Skylark's interior is surprisingly well-appointed and spacious. But then, this is a Buick compact, isn't it?

Whether you specify bench or optional bucket seats, you enjoy the comfort and support of full-foam construction. Floors feature cut-pile carpeting, front and rear. And armrests are standard, front and rear, as well.

The driver will find all gauges and controls well marked and conveniently arranged close at hand.

Something else that's surprising for a compact is Skylark's list of available options. You can order a vinyl roof, or on Coupes, a thickly padded landau top. Chrome-plated road wheels are also available. Just consult page 10 you'll be pleasantly surprised at the things you can do with your Skylark.



Skylark Interior Trim Availability				
	Vinyl Bench Seat (1)	Cloth or Vinyl Bench Seat (2)	Vinyl Buckets (3)	Custom Cloth or Vinyl Bench Seat (4)
Skylark 'S' Coupe	S			
Skylark Coupe		S	A	
Skylark Sedan		S	A	
Skylark Hatchback		S	A	
Skylark Custom Coupe			S	A
Skylark Custom Sedan			S	A
Skylark Custom Hatchback			S	A
	S Standard	A Available		

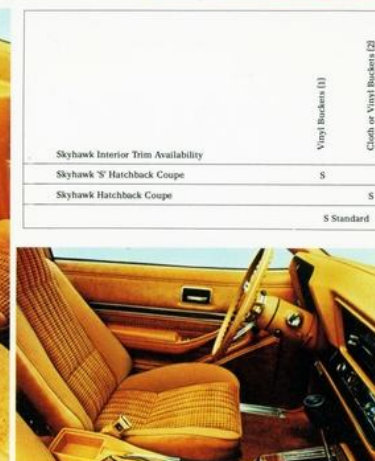
Skyhawk inside.

In keeping with Skyhawk's zeal for the road, its cockpit has been arranged to place every dial, switch and control within easy reach and eye shot of the driver.

Large, easy-to-read gauges are recessed in a simulated-wood instrument panel. These include a speedometer with kilometre as well as mile-per-hour designations. An ammeter. Fuel and temperature monitors. Options include a 7000 rpm tachometer and an electric clock.

Full-foam bucket seats are arranged in 2-plus-2 fashion. The front seats have high backs for added driving comfort. And between them you can order a full-length console which conveniently houses the gearshift lever and parking brake.

Your feet rest on the plush cut-pile carpeting usually found in luxury cars. And your hands come to grips with a standard deluxe steering wheel or, if you desire, an available three-spoke Rallye steering wheel.



Skyhawk Interior Trim Availability	
Skyhawk 'S' Hatchback Coupe	S
Skyhawk Hatchback Coupe	S
	S Standard

Some of the equipment shown or mentioned is optional at extra cost.

The 1978 Skylark: an inspection.



DIMENSIONS				
Millimeters with inches shown in parentheses unless otherwise noted.				
	Skylark "S", Skylark Custom Coupes	Skylark, Skylark Custom Hatchbacks	Skylark, Skylark Custom, Sedans	
Wheelbase	2,819 (111.0)	2,819 (111.0)	2,819 (111.0)	
Tread, front	1,501 (59.1)	1,501 (59.1)	1,501 (59.1)	
Tread, rear	1,516 (59.7)	1,516 (59.7)	1,516 (59.7)	
Length	5,084 (200.2)	5,084 (200.2)	5,084 (200.2)	
Width	1,847 (72.7)	1,847 (72.7)	1,847 (72.7)	
Height	1,326 (52.2)	1,326 (52.2)	1,349 (53.1)	
Head room, front	970 (38.2)	970 (38.2)	993 (39.1)	
Head room, rear	932 (36.7)	932 (36.7)	942 (37.1)	
Leg room, front	1,059 (41.7)	1,059 (41.7)	1,059 (41.7)	
Leg room, rear	823 (32.4)	823 (32.4)	894 (35.2)	
Shoulder room, front	1,438 (56.6)	1,438 (56.6)	1,438 (56.6)	
Shoulder room, rear	1,405 (55.3)	1,405 (55.3)	1,449 (56.7)	
Hip room, front	1,354 (53.3)	1,354 (53.3)	1,354 (53.3)	
Hip room, rear	1,341 (52.8)	1,341 (52.8)	1,361 (53.6)	
Trunk capacity, litre (cu. ft.)	394 (13.9)		374 (13.2)	
Cargo volume index, litre (cu. ft.)		628 (22.2)		
Length of load floor (rear seat folded down)		1,946 (76.6)		

SKYLARK "S"/SKYLARK CUSTOM/SKYLARK POWER TEAMS				
Sid. or Avail.	Engine Description	3-speed Manual Transmission (Std.)	Automatic Transmission (extra cost)	
Sid.	3.0 litre (231 CID) 2-bbl. V-6 (LDO)	3.08		
Sid.	3.8 litre (231 CID) 2-bbl. V-6 (LDO)		2.56 (2.93)*	
Avail.	5.0 litre (305 CID) 2-bbl. V-8 (L23)		2.41 (2.08)*	
*Available axle ratios				

MODEL AVAILABILITY

Skylark "S"~Coupe 4 XV 27
Skylark~Coupe 4 XB 27
~Hatchback 4 XB 17
~Sedan 4 XB 69

Skylark Custom~Coupe 4 XC 27
~Hatchback 4 XC 17
~Sedan 4 XC 69

Sports Package~Option Code W 18

STANDARD EQUIPMENT

Engine

- See powertrain chart
- Catalytic converter
- Semi-closed cooling system
- High-Energy Ignition
- Quick engine warm-up system with electric choke

Chassis

- Manual steering
- Manual brakes with front discs
- 3-speed manual transmission
- Coil-spring front suspension with front stabilizer bar
- Forward-mounted steering gear and linkage
- Wide-span front lower control arms
- Multiple-leaf-spring rear suspension
- Separate front frame unit, cushion-mounted to unitized body

- Step-on parking brake
- Computer-selected chassis springs
- Stowaway spare tire (Hatchback Coupe)
- Bias-belted E78-14 tires
- Self-adjusting brakes
- Trued tires and concentric wheels
- Interior, Comfort and Convenience
- Vinyl bench seat (Skylark "S")
- Choice of vinyl or cloth bench seat (Skylark)
- Custom cloth or custom vinyl bench seat in Skylark Custom
- Carpeted door trim with map pocket and reflector (Skylark Custom)
- Full-Flo ventilation
- Lights: front-door operated dome, under-dash courtesy (Custom models), rear door (Hatchback models)
- Full-foam seat construction
- Rear door or rear quarter armrests
- Front and rear ashtrays (Skylark and Skylark Custom)
- Appearance and Protection
- Carpeting: front and rear
- Load floor carpeting in Hatchback
- Deluxe steering wheel
- Stand-up hood ornament (Skylark Custom)
- Roof drip moldings (Skylark Custom)

The 1978 Skyhawk: an inspection



DIMENSIONS	
Millimeters with inches shown in parentheses unless otherwise noted.	
	Hatchback Coupes
Wheelbase	2,464 (97.0)
Tread, front	1,389 (54.7)
Tread, rear	1,361 (53.6)
Length	4,554 (179.3)
Width	1,661 (65.4)
Height	1,273 (50.1)
Headroom, front	958 (37.7)
Headroom, rear	897 (35.3)
Leg room, front	1,087 (42.8)
Leg room, rear	752 (29.6)
Shoulder room, front	1,295 (51.0)
Shoulder room, rear	1,300 (51.2)
Hip room, front	1,207 (47.5)
Hip room, rear	1,067 (42.0)
Cargo volume index, litre (cu. ft.)	787 (27.8)
Length of load floor (rear seat folded down)	1,572 (61.9)

SKYHAWK "S"/SKYHAWK POWER TEAMS			
Sid. or Avail.	Engine Description	Manual Transmission	Automatic Transmission (extra cost)
Sid.	3.8 litre (231 CID) 2-bbl. V-6 (LDO)	4-speed (std.) 2.93	
Avail.	3.8 litre (231 CID) 2-bbl. V-6 (LDO)		2.56 (2.93)*
Avail.	3.8 litre (231 CID) 2-bbl. V-6 (LDO)	5-speed (extra cost) 2.93	
*Available axle ratios			

MODEL AVAILABILITY

Skyhawk "S"~Hatchback 4HT07
Skyhawk~Hatchback 4HS07

STANDARD EQUIPMENT

Engine

- 3.8 litre (231 CID) V-6
- Catalytic converter
- Semi-closed cooling system
- High-Energy Ignition
- Quick engine warm-up system with electric choke
- Oil pressure switch connected to fuel pump, shuts off fuel supply if, for any reason, oil pressure falls below normal operating limit

Chassis

- 4-speed manual transmission full synchronized in all forward gears
- Manual steering
- Manual brakes with front discs
- Unitized construction
- Steel-belted, radial-ply BR78-13 tires on Skylark
- Bias-ply BR78-13 tires on Skyhawk "S"

- Stowaway spare tire (B78-13)
- Freedom battery (maintenance-free)
- Computer selected chassis springs
- Coil-spring suspension~front and rear
- Self-adjusting brakes
- Trued tires and concentric wheels
- Interior, Comfort and Convenience
- Vinyl bucket seats (Skyhawk "S")
- Choice~cloth or vinyl bucket seat (Skyhawk)
- Full-foam seat construction
- Cut-pile carpeting~front and rear
- Load floor carpeting
- Full-length operating console (Skyhawk)
- Hatchback door for access to cargo area
- 4-jet windshield washer
- Full-Flo ventilation
- Lift-up hatch door
- Appearance and Protection
- Bumper guards~front and rear
- Side window reveal moldings
- Bumper protective strips
- White, gold or black side accent stripes (Skyhawk)

Skylark and Skyhawk:
a few of their finer points

SKYLARK SPORT PACKAGE.

A new sport package is available on Skylark and Skylark Custom Coupes and Sedans this year. The package includes black paint accents on the front grille, around the headlamps, windshield, back window, and on the side window frames. Black sport mirrors are also available. Four body colors are offered: silver, dark gold, yellow and bright red. Skylarks equipped with this package also receive ER 78x14 steel-belted radial-ply blackwall tires and Rallye ride suspension.

AVAILABLE INTERIOR NICETIES.

Skylark's angular profile and large windows give it the distinguished look of a European touring car. And to complement this, the custom interior can be equipped with things like cloth bucket seats with a reclining seat back for the front passenger, an automatic transmission with gear shift housed in a full length console, and a Rallye steering with tilt adjustment. Even the instrumentation has a European flair; large round gauges are recessed in a flat black panel and the speedometer is graduated in both kilometres and miles-per-hour.

ACOUSTICAL PACKAGE.

A special availability on Skylark, consisting of additional insulation in the ceiling, the floor, the dashboard—even inside and under the doors, and between the cowl and fenders. We offer it because we feel that a Buick compact should afford more than just practicality. And ride quietness is one of those things that helps make a Buick a Buick.

SKYLARK AND SKYHAWK ROOFS.

Just because a car is trim in size, doesn't mean it has to be austere in design or sparse in luxury. Witness the special roof options for Skylark and Skyhawk. On Skylark Coupes you can order a thickly padded Landau top with large opera windows. Skyhawk, on the other hand, offers both a fixed-glass Astrorooftop or a manually-operated sliding glass sunroof. And there's a "Targa"-type aluminum band that arches the roof and extends down the window pillars. It's standard when you order the fixed-glass Astrorooftop and available as a separate option as well.

HATCHBACKS.

Just because a car is small, doesn't mean it can't be functional. Skylark is available as a hatchback. And every Skyhawk is a hatchback. That means a large door for easy cargo loading. And you can load a lot, too. With their back seats folded down, both Skylark and Skyhawk have nearly 28 cubic feet of cargo. That's more room than you'll find in the trunk of some full-size cars.

SKYHAWK'S 5-SPEED OVERDRIVE.

Available on Skyhawk is a 5-speed manual transmission. The fifth gear is actually an overdrive. That means better cruising than with a 4-speed because it takes the engine fewer rpm's to move the car a given distance. Skyhawk also offers an available 3-speed automatic. And the standard transmission is a 4-speed manual. Whichever you select, the transmission operates via a shift lever mounted between the bucket seats.

SKYLARK "S" AND SKYHAWK "S"
Skylark and Skyhawk each offer a special, lower-priced model called the "S". Although they are not equipped with as many standard features as regular models, they nonetheless provide ample Buick quality. And naturally, you can specify the available options you wish to add.



Some of the equipment shown or mentioned is optional at extra cost.

Exterior colors

Colors shown are representative only. Printed reproduction does not permit accurate color fidelity. Actual colors may be seen at your Pontiac-Buick dealer's.



11. White



15. Silver Metallic



19. Black



22. Medium Blue Metallic



44. Light Green Metallic



61. Tan



63. Dark Gold Metallic



67. Saffron Metallic



69. Brown Metallic



77. Red Metallic



24. Bright Blue Metallic



48. Dark Green Metallic



51. Yellow



75. Bright Red



Skylark 'S' Coupe



Skylark Coupe



Skylark Hatchback Coupe



Skylark Sedan



Skylark Custom Coupe



Skylark Custom Hatchback Coupe



Skylark Custom Sedan



Skyhawk 'S' Hatchback Coupe



Skyhawk Hatchback Coupe



GENERAL MOTORS
OF CANADA LIMITED
OSHAWA, ONTARIO.

The illustrations or descriptions in this catalogue do not necessarily show standard colors, materials and equipment. General Motors of Canada Limited reserves the right to make changes at any time without notice, in prices, colors, materials, equipment, specifications and models, and also to discontinue models. This right may be exercised without incurring any responsibility with regard to cars and trucks previously sold.

A word about the components and optional equipment in these vehicles.

The vehicles described in this brochure incorporate thousands of different components produced by General Motors of Canada Limited and related companies and by various suppliers to General Motors of Canada or related companies. From time to time during the manufacturing process it may be necessary in order to meet public demand for particular vehicles or equipment, or to meet federally mandated emission and safety requirements or fuel economy guidelines, or for other reasons, to produce vehicles with different components or differently sourced components than initially scheduled. All such components have been approved for use in our products by General Motors of Canada Limited or related companies and will provide the quality performance associated with our name.

With respect to extra cost optional equipment, make certain you specify the type of equipment you desire on your vehicle when ordering it from your dealer. Before taking delivery of the vehicle, we suggest you verify that it includes the optional equipment that you ordered or if there are changes, they are acceptable to you.