

1 9 9 5

LUMINA



You asked for a great new American car. A car
you can be proud to own, and a dependable car you
know will go the distance.

THE CHEVROLET With this in mind, the new
YOU ASKED FOR IS HERE. 1995 Chevrolet Lumina awaits
your critical, careful review.

No matter what you're driving right now, we think
you'll be impressed with Lumina value, quality and style.

Lumina is that good. And it's Genuine Chevrolet.

Harmony. Merriam-Webster defines it as "the pleasing or congruent arrangement of parts." You'll see it and feel it in a Chevrolet Lumina.

YOUR NEW LUMINA WAS BEAUTIFULLY DESIGNED AND CAREFULLY BUILT. The Lumina launch team — product planners, designers, engineers, assemblers — had one goal: to bring you a car that

is harmoniously designed and built to a consistently high standard of excellence.

A solid, strong foundation.

Rigid, unitized body/frame construction helps make Lumina strong and quiet. This foundation is an important reason why Lumina has an exceptionally smooth ride and feels so solid, stable and well-built.

Genuine value, Genuine Chevrolet.

Lumina has the safety features you need (including dual air bags and safety-cage construction), the performance you expect (standard V6 power), and the features you want (from air conditioning to cup holders) ... all at a price you can afford.

That's a great American value. And that's Genuine Chevrolet.



YOU'LL LOVE THE QUIET.

In a 1995 Lumina you will enjoy the luxury of quiet, thanks to design features that reduce highway wind noise, including thicker side glass, triple door seals, and the strategic use of advanced sound-deadening materials. Liquid-filled engine mounts cut powertrain noise and vibration to a remarkably low level.

**RESPONSIVENESS WITHOUT HARSHNESS,
SMOOTHNESS WITHOUT THAT FLOATING FEELING.**

New variable-rate rear springs actually adjust to suit load conditions. The Lumina's suspension was fine-tuned on test tracks and on real-world roads all across the United States. The impressive result is a smooth ride combined with the response that makes driving pure pleasure.

MORE RUST-RESISTANT THAN A \$50,000 LEXUS.

Unsurpassed protection against corrosion is provided by the use of two-side-galvanized steel for all exterior body panels except the roof. The zinc coating actually helps prevent surface rust on the outside due to minor chips or scratches, and helps prevent holes which start from the inside. That's double coverage.

THE WET-LOOK SHINE THAT STANDS UP TO ACID RAIN.
Lumina features clear-coat paint that not only provides a more durable, lustrous finish, but also reduces the severity of water-spotting and etching from acid rain. The final clear coat is applied over rust-fighting primers and a mirror-smooth base-coat paint.

EVEN THE BUMPERS ARE BETTER.
Impact-absorbing 5-mph front and rear bumpers feature resilient body-color covers to resist minor dings and dents.

THE INNOVATIVE FUEL FILLER.
There's actually a table tennis ball inside the fuel-filler pipe of every 1995 Lumina. Its function is very simple. As you fill the tank at the gas station, the table tennis ball floats to the top of the fuel-filler opening. This helps prevent gas from splashing back and getting on your hands, clothes or shoes.

EVERY LUMINA GETS A FACTORY "TEST DRIVE."
Before any new Lumina leaves the assembly plant, it receives what our engineers call Dynamic Vehicle Testing (DVT). In this process, the car is placed on dynamometer rollers and run to a simulated speed of 65 mph. The engine, brakes, transmission shift points, air conditioning, electronics and cruise control are all checked. After DVT, each car gets two final inspections before it is allowed to be shipped.



Lumina LS Custom Cloth interior
with standard 60/40 front seat.

You want a car that can handle everyday life. You want
the room for friends, family and groceries. You want to
take that summer vacation —
and you want to be able to take
your luggage, too.

LUMINA LS.
ALL THE ROOM AND
COMFORT YOU ASKED FOR.

That's why Lumina LS Sedan
offers more interior room and

trunk space than Honda Accord or Toyota Camry sedans.

Lumina LS Sedan seats six in comfort with the stan-
dard 60/40 seating arrangement (includes center storage
armrest). Or you can opt for 40/40 reclining front bucket
seats and center console (shown below). Either way, you
get newly contoured chair-high seats, cup holder, and
power windows with a driver's Express-Down feature.
Optional: a remote keyless entry system that allows you
to lock or unlock doors, or unlock the trunk from up
to 30 feet away.



Lumina LS Custom Cloth interior
with optional front bucket seats.

When you look at everything Lumina offers, we believe you will be impressed. You will see new comfort and

convenience features, advanced safety technology, and value features that help make this Chevrolet a car you will be proud to own.

VALUE YOU CAN ALWAYS DEPEND ON. THAT'S GENUINE CHEVROLET.

Compare this feature list — and the Lumina window sticker — with any other car. We are confident you'll find Lumina the better value.



STRETCH-OUT ROOM & COMFORT.

You want a car you can feel comfortable in, and there's no comfort in feeling squeezed. That's why Lumina offers more interior room than any Honda Accord or Toyota Camry sedan. Lumina also offers a choice of seating styles for five or six passengers.

STANDARD AIR CONDITIONING.

Air conditioning with non-ozone-depleting CFC-free refrigerant is standard. Other standard features that make Lumina so easy to live with include a large cup holder, tinted glass for all windows, power door locks, and a Delco AM/FM stereo.

STANDARD 3100 V6 ENGINE.

You want smooth, effortless power for passing and merging. In a Lumina you get it, thanks to a standard 3100 V6 with Sequential-Port Fuel Injection. This engine is smoother, quieter, and more powerful than last year's standard V6. Horsepower is 160 at 5200 rpm.

DUAL AIRBAGS.

Driver- and right-front passenger-side air bags are standard. The air bag over in the steering-wheel hub doubles as a sizable horn button, allowing the driver to honk without pressing in the middle of the steering wheel. Always wear safety belts, even while bugs

STANDARD SECURITY SYSTEM.

PASS-Key II is a totally passive theft-deterrent system designed to help keep your Lumina safe and secure. Only your special coded ignition key starts your 1995 Lumina. If an attempt is made to start the car without the proper key, the ignition system is disabled.

A SPECIAL NOTE TO PARENTS.

Standard rear-seat safety-belt comfort guides make wearing safety belts more comfortable for children who have outgrown child restraints. Rear outboard safety belts are also designed to accommodate child safety seats without the use of any add-on hardware or clips.

SAFETY-CAGE CONSTRUCTION.

A steel "safety cage" surrounds the passenger compartment of every Lumina. Front and rear crush zones help cushion and absorb the force of impact in a collision. Lumina meets 1997 Federal standards for side-impact protection, today!

FOUR-WHEEL ABS.

A power-assisted four-wheel anti-lock brake system (ABS) is standard in Lumina LS Sedan and optional in Lumina Sedan. ABS prevents wheel lockup while braking and is designed to help you maintain steering control and prevent skidding when braking on most slippery surfaces.

CHILD SECURITY REAR-DOOR LOCKS.

Parents voted overwhelmingly in favor of child-security rear-door locks, so they are standard in every '95 Lumina. These door locks, when engaged, prevent the rear doors from being opened from the inside.

SCOTCHGARD™ PROTECTOR.

People told us they wanted a car interior that's more beautiful — and easier to keep beautiful. That's why every Lumina — unlike Honda, Toyota or Ford Taurus — has Scotchgard™ Protector on seat fabrics, door trim, floor carpeting and floor mats.

ADVANCED SUSPENSION TECHNOLOGY.

The technology that makes Lumina so easy to drive includes a computer-calibrated four-wheel independent suspension with front and rear stabilizer bars, tuned rack-and-pinion power steering, and Delco gas-charged shock absorbers.

STAINLESS-STEEL EXHAUST.

You've got better things to think about than your muffler. That's why we made a high-quality stainless-steel exhaust system standard on every Lumina.

LUMINA LS.

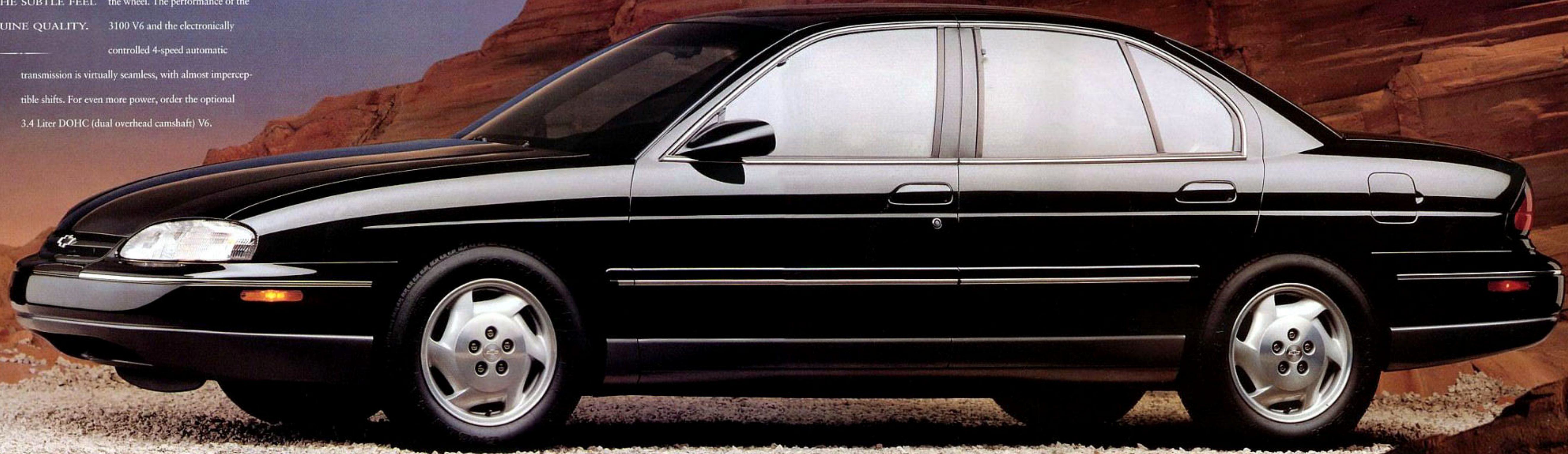


Lumina LS Sedan with
optional aluminum wheels.

Refined. Refreshing. Confident. Subtle. These are the words people are using to describe the 1995 Lumina LS.

It's a feeling of quality that is reinforced when you get behind the wheel. The performance of the 3100 V6 and the electronically controlled 4-speed automatic transmission is virtually seamless, with almost imperceptible shifts. For even more power, order the optional 3.4 Liter DOHC (dual overhead camshaft) V6.

A four-wheel anti-lock brake system (ABS) is standard in the LS Sedan. ABS is designed to help you maintain steering control and prevent skidding when braking on most slippery surfaces.



Lumina LS Sedan
with optional aluminum wheels.



Lumina LS instrument panel with optional Delco AM/FM stereo and compact disc player. This optional radio features Speed-Compensated Volume (as the car's speed increases and outside noise becomes louder, the radio volume increases), coaxial speakers, and Automatic Tone Control, which tailors equalization to the type of music or voice being heard (classical, news, rock/country, pop or jazz).

The first thing you'll notice is the quality. The soft-feel steering wheel and control knobs. The way everything seems to wrap around you. Then

LUMINA LS. you'll see how this instrument panel design makes driving easier. LIKE THIS. The easy-to-see, easy-to-read analog instrumentation in Lumina

LS includes speedometer, tachometer, temperature gauge and trip odometer.

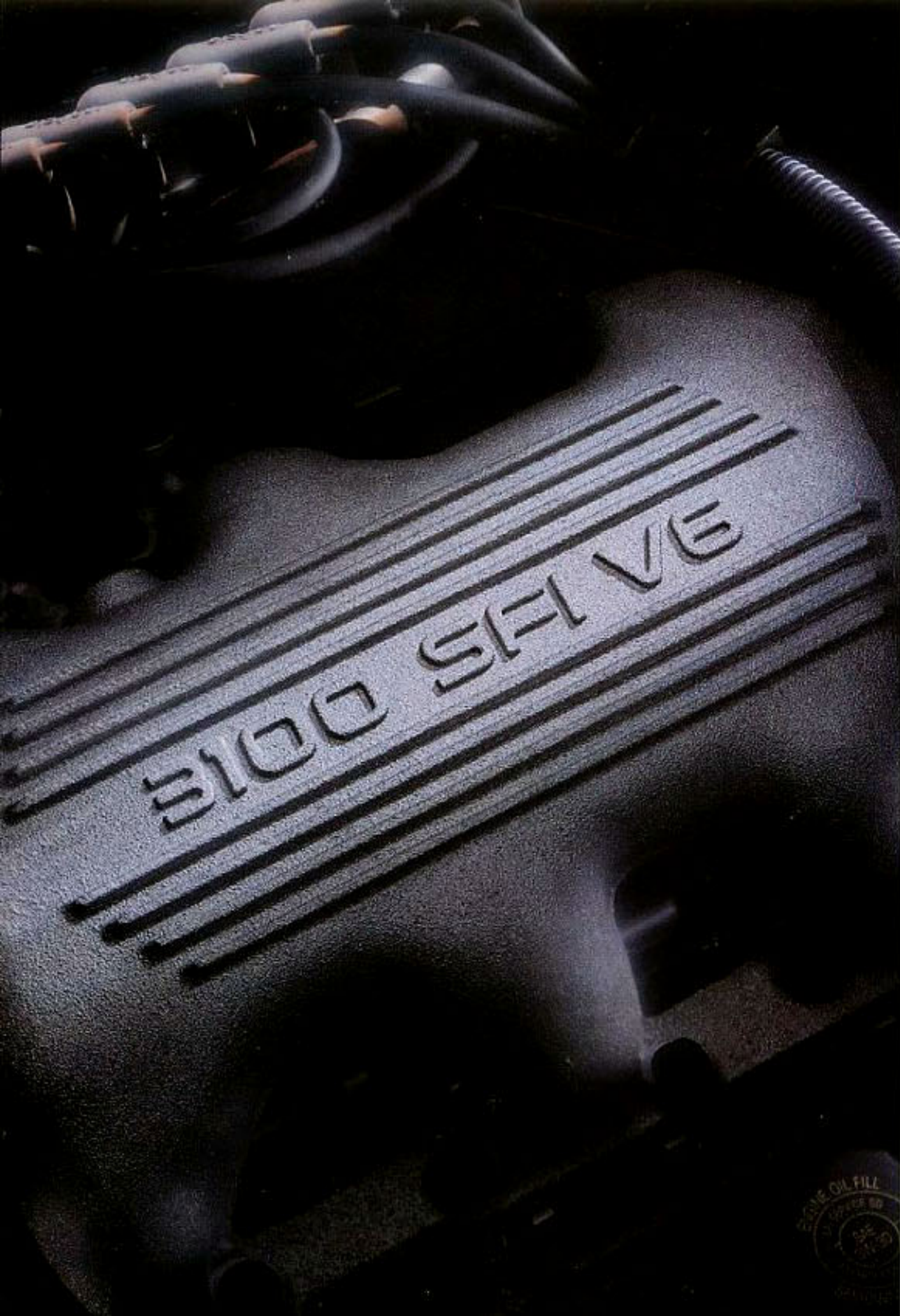
Convenience features include a cup holder, a spacious lockable glove compartment, in-door storage pockets and courtesy lighting for reading maps at night.

Other reasons driving is more pleasurable in a Lumina LS include a standard Tilt-Wheel™ Adjustable Steering Column, Soft-Ray™ tinted glass for all windows, power door locks, and power windows with a driver's Express-Down feature.

LUMINA LS SEDAN.



Lumina LS Sedan
with optional aluminum wheels.



Year after year, the majority of mid-size sedan buyers opt for a V6 engine and automatic transmission.

That's why this powertrain of choice is standard in every Lumina. CHOOSE FROM TWO LEVELS OF SMOOTH V6 PERFORMANCE. *Standard 3100 V6 with Sequential-Port Fuel Injection.*

This standard 160-hp V6 offers an outstanding combination of performance and quiet operation. For an ultra-smooth idle and world-class throttle response, the 3100 V6 features Sequential-Port Fuel Injection. A direct fire ignition system helps provide quick starts and eliminates the need for periodic timing adjustments.

STANDARD 3100 V6.
The 3100 V6, standard in
Lumina Sedan and Lumina LS Sedan,
delivers 160 hp at 5200 rpm.

Optional 3.4 Liter DOHC V6.

Lumina LS Sedan is available with a sophisticated 3.4 Liter V6 with dual overhead camshafts and Sequential-Port Fuel Injection. This four-valves-per-cylinder engine delivers 210 hp at 5200 rpm. Torque is an impressive 215 lb.-ft. at 4000 rpm. Bottom line: the DOHC Lumina is just plain fun to drive.

4-speed automatic transmission.

This electronically controlled 4-speed automatic, which is standard in both Lumina Sedan and Lumina LS Sedan, is one of the auto industry's most advanced transmissions. The benefit to you is computerized shift control for precise, virtually undetectable shifting, and shift timing that is perfectly matched to the performance characteristics of the Lumina V6 engine.

OPTIONAL 3.4 LITER DOHC V6.
The high-performance, 210-hp
DOHC V6 is optional in
Lumina LS Sedan.





There is no subject more important than safety for you and the ones you love. That's why Lumina is designed

and built with more safety features

SAFETY.

than ever before. Here are a few of

ONE OF THE BEST

the reasons you'll feel more secure

REASONS TO BUY A

in a Lumina.

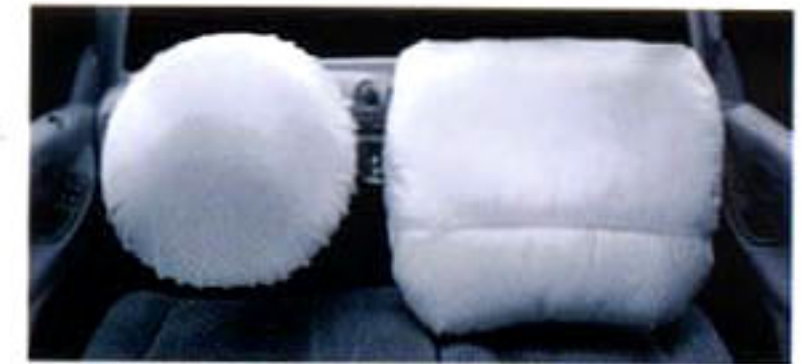
'95 LUMINA.

*Energy-absorbing controlled
crush zones.*

In collisions, the front and rear ends of the Lumina are designed to help absorb energy in a controlled manner, so that the integrity of the passenger compartment can be maintained. Other integral safety features include an energy-absorbing steering column and an energy-absorbing instrument panel.

Safety-cage construction.

A rugged steel safety cage (with reinforced floor and body sills, high-strength roof construction and pillars, and side-guard door beams) surrounds the entire Lumina passenger compartment. This cage is so strong it helps Lumina meet 1997 U.S. government side-impact standards, *today*.



Dual air bags.

Driver- and right-front passenger-side air bags are standard in every 1995 Lumina. These air bags have been engineered to provide you with enhanced protection when used in conjunction with safety belts. A special note: Always wear safety belts, even with air bags.



Four-wheel anti-lock brake system.

GM's award-winning ABS VI four-wheel anti-lock brake system is standard in Lumina LS Sedan, and optional in Lumina Sedan. ABS prevents wheel lockup and is designed to help you maintain steering control and prevent skidding on most slippery surfaces.

LUMINA SEDAN.



Introducing the standard Lumina Sedan, a handsome automobile that just may be the best mid-size value available anywhere.

LUMINA SEDAN. The look is upscale inside and out, the quality superb, and the OF AUTOMOTIVE VALUE, feature list long.

Standard equipment includes a 3100 V6 with Sequential-Port Fuel Injection, 4-speed automatic transmission, dual air bags, 15" all-season

radial-ply Touring tires, bolt-on full wheel covers, a fully independent suspension with front and rear stabilizer bars, and a long-lasting stainless-steel exhaust system.





Lumina Sedan interior with standard 60/40 front bench seat.

Here's something you don't see every day: a spacious six-passenger interior in a truly affordable mid-size car.

LUMINA SEDAN.
DON'T SPEND MORE
MONEY AND GET LESS CAR.

But there's more to this

story than room. Lumina Sedan is beautifully equipped, too. Standard features include air conditioning (with non-ozone depleting, CFC-free refrigerant), power door locks, auxiliary lighting, a Delco AM/FM stereo, and a Tilt-Wheel™ Adjustable Steering Column.

The newly designed 60/40 front seat with full-foam construction offers exceptional comfort and the added convenience of a center armrest with storage compartment and cup holder. Nighttime "theatre lighting" is a new standard feature for 1995. It starts out bright when you get in the car, then gradually dims as you prepare to drive away.

IMPRESSIVE CARGO SPACE.
The large 15.7-cu.-ft. trunk features a low lift-over height for added loading convenience. The optional cargo retaining net, shown here, is designed to help keep small packages secure.



Chevrolet is committed, in every way, to making your 1995 Lumina the best car you've ever owned.

That commitment starts with a **GENUINE CUSTOMER CARE.** quality car, and it continues with a promise to treat you as a valued customer. *Always.*

As a Chevrolet owner, you are covered by Genuine Customer Care, a comprehensive owner-protection plan that includes all of the following:



Bumper to Bumper Warranty.

The GM 3-year/36,000-mile (whichever comes first) limited warranty covers repairs for all 1995 Luminas, including labor and parts, to correct any defects in material or workmanship occurring during the warranty period. Warranty features include air conditioning repair, towing, no-cost warranty transfer,

6-year/100,000-mile (whichever comes first) sheet-metal rust-through protection and 5-year/50,000-mile (whichever comes first) emissions control system coverage. Items not covered by the warranty include tires (which are covered by their manufacturer) and normal maintenance. See your Chevrolet dealer for terms of this limited warranty.



Courtesy Transportation.

Customers who purchase or lease a 1995 Lumina will be able to take advantage of Courtesy Transportation at no additional charge when their vehicles are left at a participating dealership for repairs covered under the 3-year/36,000-mile New Vehicle Limited Warranty. See your participating dealer for details.



24-Hour Roadside Assistance.

For as long as you own your 1995 Lumina, the security and convenience of round-the-clock Roadside Assistance is available via a toll-free hot line (1-800-CHEV-USA). Your call will be answered by a Roadside Assistance phone advisor trained by Chevrolet.

You will be placed in contact with a nearby service center, and assistance with towing and other helpful services will be arranged. Please ask your Chevrolet dealer for more details.





LUMINA COLORS AND TRIM.

EXTERIOR COLORS.

		
Black	Light Adriatic Blue Metallic	Medium Adriatic Blue Metallic
		
Light Driftwood Metallic	Sherwood Green Metallic	Purple Pearl Metallic
		
Medium Garnet Red Metallic	Silver Metallic	Bright White

LUMINA SEDAN.

SEAT TYPE	INTERIOR COLORS			
	RUBY RED	MEDIUM BLUE	MEDIUM BEIGE	MEDIUM GRAY
Cloth 60/40	•	•	•	•
EXTERIOR COLORS				
Black	•		•	•
Light Adriatic Blue Metallic		•		
Medium Adriatic Blue Metallic		•		•
Light Driftwood Metallic			•	
Sherwood Green Metallic			•	•
Purple Pearl Metallic				•
Medium Garnet Red Metallic	•		•	•
Silver Metallic	•	•		•
Bright White	•	•	•	•

LUMINA LS SEDAN.

SEAT TYPE	INTERIOR COLORS			
	RUBY RED	MEDIUM BLUE	MEDIUM BEIGE	MEDIUM GRAY
Custom Cloth 60/40	•	•	•	•
Optional Custom Cloth bucket	•	•	•	•
EXTERIOR COLORS				
Black	•		•	•
Medium Adriatic Blue Metallic		•		•
Sherwood Green Metallic			•*	•
Purple Pearl Metallic				•
Medium Garnet Red Metallic	•		•*	•
Silver Metallic	•	•		•
Bright White	•	•	•	•

*Requires lower-accent paint delete.

LUMINA BUYER'S GUIDE.

LUMINA PREFERRED EQUIPMENT GROUPS.

NOTE: These optional Preferred Equipment Groups (PEGs) are designed to help simplify the buying process. You may also add selected individual options (see Standards & Options chart for availability). Some restrictions apply. Please see your salesperson for details.

LUMINA SEDAN PREFERRED EQUIPMENT GROUP 1

Electronic Speed Control with Resume Speed

Luggage-Area Cargo Net

Power Trunk Opener

Power Windows with Driver's Express-Down Feature

Twin Electric Remote Sport Mirrors

LUMINA LS SEDAN PREFERRED EQUIPMENT GROUP 1

Electronic Speed Control with Resume Speed

Luggage-Area Cargo Net

Power Trunk Opener

Remote Keyless Entry System

Twin Electric Remote Sport Mirrors

STANDARDS & OPTIONS.

NOTE: Some individually available options listed below are included in the Preferred Equipment Group. Some restrictions may apply. Please see your salesperson for details.

	LUMINA SEDAN	LUMINA LS SEDAN
EXTERIOR		
5-mph bumper system	S	S
Base-coat/clear-coat paint	S	S
Body-side moldings	S	S
Composite halogen headlamps	S	S
Two-side-galvanized steel (all exterior body panels except roof)	S	S
Sport mirrors, left-hand remote	S	S
Sport mirrors, twin electric remote	*O	O
INTERIOR		
Air conditioning (with CFC-free refrigerant)	S	S
Auxiliary lighting (dome, reading, glove box, ashtray and trunk)	S	S
Carpeted front and rear floor mats, color-keyed	S	S
Cellular telephone provisions (requires compatible Delco telephone)	O	O
Child security rear-door locks	S	S
Cup holder in instrument panel	S	S
Delayed-entry/exit lighting with theatre dimming	S	S
Driver- and right-front passenger-side air bags	S	S
Electronic speed control with Resume Speed	O	O
Front-door map pockets	S	S
Gauge package with tachometer	—	S
Headlamps-on reminder tone	S	S
Intermittent wiper system	S	S
Low-coolant-level light	S	S
Low-oil-level light	S	S
Luggage-area cargo net	O	O
PASS-Key II theft-deterrent system	S	S
Power door-lock system	S	S

	LUMINA SEDAN	LUMINA LS SEDAN
INTERIOR (CONTINUED)		
Power driver seat (6-way)	O	O
Power trunk opener	O	O
Power windows with driver's Express-Down feature	O	S
Rear-seat safety-belt child comfort guides	S	S
Rear-window defogger	O	O
Remote Keyless Entry System	O	O
Scotchgard™ Protector on cloth seats, door trim, floor carpeting and floor mats	S	S
Seate cloth 60/40 split-bench front seat with center storage armrest and cup holder	S	—
Seate Custom Cloth 60/40 split-bench front seat with center storage armrest and cup holder	—	S
Seate Custom Cloth 40/40 front bucket seats with storage console and cup holder	—	O
Side-window defoggers	S	S
Tilt-Wheel™ Adjustable Steering Column	S	S
Tinted glass — all windows	S	S
Visor mirrors, covered left-hand and right-hand (lighted right-hand on LS)	S	S

DELCO SOUND SYSTEMS

NOTE: Lumina stereo sound systems include a Delco electronically tuned AM/FM stereo with seek-scan, extended-range speakers, and digital clock.

Stereo: AM/FM	S	—
Stereo: AM/FM with cassette tape player	O	S
Stereo: AM/FM with cassette tape player, Automatic Tone Control, TheftLock™ security feature and Speed Compensated Volume	O	O
Stereo: AM/FM with compact disc player, Automatic Tone Control, TheftLock™ security feature and Speed Compensated Volume	O	O

POWER TEAMS/CHASSIS

V6 engine: 3100 with Sequential-Port Fuel Injection	S	S
V6 engine: 3.4 Liter DOHC with Sequential-Port Fuel Injection	—	O
Transmission: 4-speed electronic automatic with Overdrive	S	S

	LUMINA SEDAN	LUMINA LS SEDAN
POWER TEAMS/CHASSIS (CONTINUED)		
Brakes: 4-wheel anti-lock system (ABS)	O	S
Brakes: Power front disc/rear drum	S	S
Delco Freedom II Battery	S	S
Front-wheel drive	S	S
Power rack-and-pinion steering	S	S
Single serpentine belt engine accessory drive	S	S
Stainless-steel exhaust system	S	S
Suspension: Sport Ride and Handling*	—	O
Suspension: Soft Ride	S	S

*Included with 3.4 Liter V6 only.

WHEELS/TIRES

Wheels: 15" x 6" with bolt-on full wheel covers	S	—
Wheels: 15" x 6" with deluxe chrome bolt-on full wheel covers	—	S
Wheels: 16" x 6.5" aluminum	O	O
Tires: P205/70R-15 Blackwall Touring	S	S
Tires: P225/60R-16 Blackwall Touring	O	O
Tires: P225/60R-16 Blackwall Performance	—	O*

*Requires 3.4 Liter V6. S — Standard. O — Optional.

DATA.

EXTERIOR DIMENSIONS (IN.)^a	
Wheelbase	107.5
Length (overall)	200.9
Width (overall)	72.5
Height (overall)	55.2
INTERIOR DIMENSIONS (IN.)	
Head room — front	38.4
Head room — rear	37.4
Hip room — front	55.4
Hip room — rear	55.3
Leg room — front	42.4
Leg room — rear	36.6
Shoulder room — front	58.4
Shoulder room — rear	57.4

CAPACITIES

Passenger capacity	6*
Luggage capacity (cu. ft.)	15.7
Fuel tank capacity (gal.)	17.1

*5-passenger seating with bucket seats.

TRAILERING

Trailer classification	Light
Gross trailer weight (lbs., up to)	1000
Maximum tongue load (lbs.)	100

NOTE: Tire chains should not be used on Lumina equipped with P225/60R-16 tires because they could cause damage to these vehicles.

LUMINA SAFETY FEATURES.

OCCUPANT PROTECTION:

• Supplemental Inflatable Restraint: manual lap/shoulder safety belts and air bags, driver/right-front passenger • Manual lap/shoulder safety belts, outboard rear-seat positions • Manual lap belts, center-seat positions • Energy-absorbing steering column • Energy-absorbing instrument panel • Interlocking door latches • Safety armrests • Breakaway inside rearview mirror • Security door locks and door-retention components • Laminated windshield glass, urethane-bonded • Head restraints, front, adjustable • Side-door beams • Passenger-guard inside door-lock handles • Front and rear crush zones.

ACCIDENT AVOIDANCE:

• Side-marker lamps and reflectors • Parking lamps • Four-way hazard-warning flashers • Backup lamps • Directional signal control • Windshield defrosters, washer and multi-speed wipers • Inside day/night rearview mirror • Outside rearview mirrors • Brake system with dual master cylinder plus warning light • Center high-mounted stop lamp • Starter safety switch • Dual-action hood latch • Low-glare finish (inside windshield moldings, wiper arms and blades, metallic steering-wheel surfaces) • Illuminated heater and defroster controls • Tires with built-in tread-wear indicators • Audible disc brake lining-wear indicators • Brake/transmission shift interlock.

THEFT DETERRENCE:

Visible vehicle identification number • Laser-etched VIN plate • Marked body parts • Theft-deterrent steering-column lock • PASS-Key II personal security system • Remote inside hood release.

A WORD ABOUT...

CUSTOMER ASSISTANCE.

The Chevrolet Customer Assistance Center (CAC) has a special toll-free number (1-800-222-1020). It puts you in contact with Chevrolet experts who can handle any product/service question or problem you may have.

GM PROTECTION PLAN.

The available GM Protection Plan offers service protection in addition to that provided by GM's new-vehicle limited warranty. Ask your dealer about it. Coverage available only in the U.S. and Canada.

ENGINES.

Chevrolets are equipped with engines produced by different operating units of GM, its subsidiaries or suppliers to GM worldwide.

CORROSION PROTECTION.

Chevrolets are designed and built to resist corrosion. All body sheet-metal components are warranted against rust-through corrosion for 6 years or 100,000 miles, whichever comes first. Application of additional rust-inhibiting materials is not required under the corrosion coverage.

ASSEMBLY.

Chevrolets are assembled by different operating units of General Motors, its subsidiaries or suppliers to GM worldwide. Chevrolets incorporate thousands of components produced by different operating units of GM, its subsidiaries or suppliers to GM worldwide. We sometimes find it necessary to produce Chevrolets with different or differently sourced components than originally scheduled. All such components have been approved for use in Chevrolets and will provide the quality performance associated with the Chevrolet name. Since some options may be unavailable when your vehicle is assembled, we suggest that you verify that your vehicle includes the equipment you ordered or, if there are changes, that they are acceptable to you. Lumina is assembled in Oshawa, Ontario, Canada.

UPDATED SERVICE INFORMATION.

Chevrolet regularly sends its dealers useful service bulletins about Chevrolet products. Chevrolet monitors product performance in the field. We then prepare bulletins for servicing our products better. Now you can get these bulletins, too. Ask your dealer. To get ordering information, call toll free 1-800-551-4123.

IMPORTANT: A WORD ABOUT THIS CATALOG.

We have tried to make this catalog as comprehensive and factual as possible. We reserve the right, however, to make changes at any time, without notice, in prices, colors, materials, equipment, specifications, models and availability. Since some information may have been updated since the time of printing, please check with your Chevrolet dealer for complete details.

LUMINA.

GENUINE CHEVROLET.

GMAC At your Chevrolet dealer, financing or leasing your new Lumina can be as easy as saying GMAC. With GMAC, financing or leasing is done right in the showroom. Terms are tailored to suit your personal needs, and you can choose your monthly payment date. Ask your dealer about GMAC's special SMARTLEASE® and SMARTBUY™ programs.

GM **TURN PLASTIC INTO STEEL WITH THE GM CARD™.**
The GM Card is the revolutionary financial vehicle specifically designed to help put you behind the wheel. Every time you use it, GM will credit 5% of your purchase toward buying or leasing the GM car or truck of your dreams. It could mean saving hundreds, even thousands of dollars, over and above any other discounts or rebates. Call 1-800-8GM-CARD for more information, including annual limits and restrictions.

A note about air bags: Always wear safety belts, even with air bags.

General Motors, GM, the GM Emblem, Lumina, Chevrolet and the Chevrolet Emblem are registered trademarks and Chevy is a trademark of the General Motors Corporation. Scotchgard is a trademark of the 3M Corp. PASS-Key is a registered trademark of the Delco Electronics Corporation. GMAC and SMARTLEASE are registered trademarks and SMARTBUY is a service mark of the General Motors Acceptance Corporation. ©1994 General Motors Corporation. All rights reserved.

GM
BUCKLE UP
AMERICA

Litho in U.S.A. 3379 March 1994





GENUINE CHEVROLET™