



# CHEVROLET CAPRICE



There are other cars that offer this much luxury, this much power and this much technology. But do you really want to pay thousands more for an

**CAPRICE CLASSIC.** expensive-sounding nameplate, when Caprice Classic offers so

**A QUIET, LUXURIOUS** much more for so much less?

**AMERICAN TRADITION.** This luxurious Chevrolet is one of the most spacious automobiles

you can buy, with exceptional comfort for six passengers (eight passengers in the

Caprice Classic Wagon). A tuned Full Coil suspension and long wheelbase

contribute to the quiet, cushioned ride. For 1994 you can choose from two new

and more powerful V8 engines, for the passing and merging power you want.

And for the safety of you and your family, new dual air bags\* and a four-wheel

anti-lock brake system (ABS) are standard in every Caprice Classic.

No wonder Caprice Classic is one of America's most popular full-size cars.

\*Always wear safety belts, even with air bags.



*Caprice Classic LS Sedan in  
Purple Pearl Metallic.*



#### **New Optional LT1 V8**

For truly impressive performance, the legendary LT1 V8 may now be ordered in Caprice Classic. Displacement is 5.7 liters, horsepower is 260 at 5000 rpm.

#### **Dual Air Bags**

Designed to help protect front-seat occupants in the event of a moderate to severe frontal collision. Always wear safety belts, even in cars equipped with air bags.

#### **New Electronically Controlled 4-Speed Automatic**

For virtually seamless performance with almost imperceptible shifts, Caprice Classic features a new electronically controlled 4-speed automatic transmission.

#### **New Standard 4300 V8**

This new standard V8 delivers 200 hp at 5200 rpm, a 30-hp increase from last year's standard engine. The "4300" is one of the smoothest, most quiet engines ever in a Chevrolet Caprice.



#### **Bumper to Bumper Warranty**

Every new Caprice Classic is backed by an extensive no-deductible, limited warranty for 3 years or 36,000 miles, whichever comes first. See your Chevrolet dealer for terms of this limited warranty.

#### **THE CHEVROLET CUSTOMER CARE PACKAGE**

##### **24-Hour Roadside Assistance**

For as long as you own your 1994 Caprice Classic, the security and convenience of round-the-clock Roadside Assistance is available via a toll-free hot line (1-800-CHEV-USA). Please ask your Chevrolet dealer for more details.

##### **Safety-Cage Construction**

A rugged steel "safety cage" surrounds the passenger compartment of every Caprice Classic. This cage is so strong it helps Caprice Classic meet 1997 Federal side-impact standards today.

##### **Courtesy Transportation**

Customers who purchase or lease a 1994 Caprice Classic will be able to take advantage of Courtesy Transportation at no additional charge when their vehicles are left at a participating dealership for repairs covered under the 3-year/36,000-mile New Vehicle Limited Warranty. See your participating dealer for details.

##### **Two-Side-Galvanized Steel**

Excellent corrosion protection is provided by the use of two-side-galvanized steel for all exterior body panels except the roof. The zinc coating actually eliminates surface rust on the outside due to minor chips and scratches.

##### **Four-Wheel ABS**

A four-wheel anti-lock brake system (ABS) is standard in every 1994 Caprice Classic. ABS helps prevent wheel lockup during severe braking and is designed to help you maintain steering control even in a panic stop in rain or snow.

##### **Standard Security System**

PASS-Key II, a new standard feature for 1994, is a totally passive theft-deterrent system designed to help keep your Caprice Classic safe and secure. Only your special coded ignition key starts your 1994 Caprice Classic. If an attempt is made to start the car without the proper key, the ignition system is disabled.

##### **Full-Frame Construction**

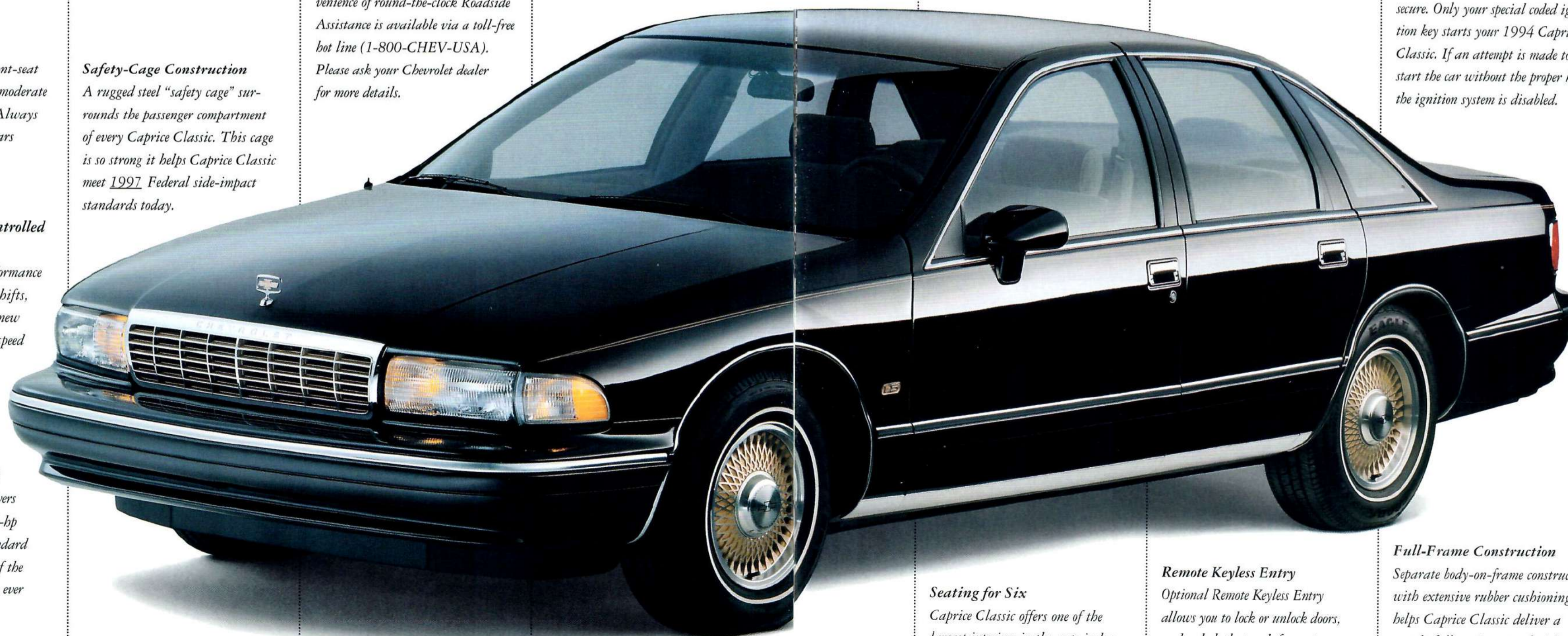
Separate body-on-frame construction with extensive rubber cushioning helps Caprice Classic deliver a wonderfully quiet, smooth ride.

## **USE THIS GUIDE TO "WALK AROUND" THE 1994 CAPRICE CLASSIC.**



##### **Scotchgard™ Protector**

Scotchgard™ Protector, on cloth seats, door trim, floor carpeting and floor mats, is standard in all 1994 Caprice Classic models, for soil resistance and easy cleanup.

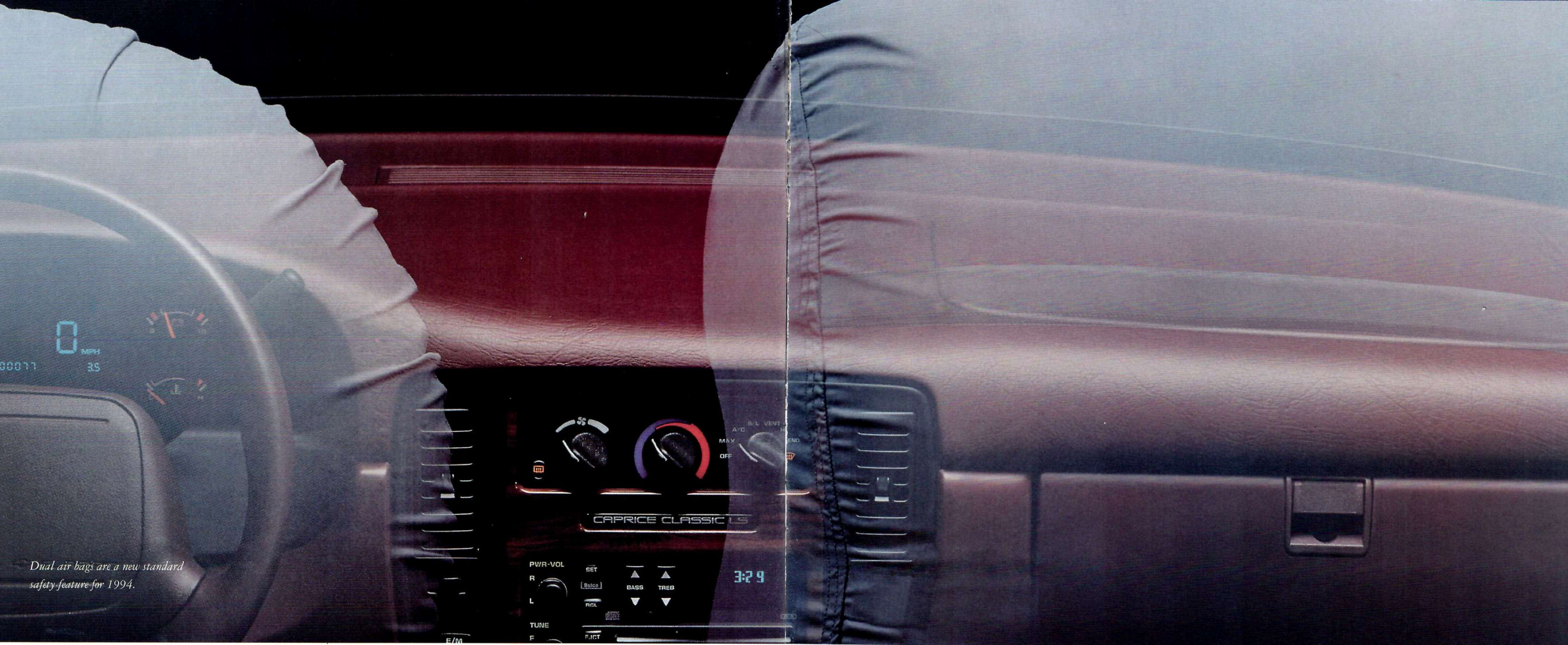


##### **Seating for Six**

Caprice Classic offers one of the largest interiors in the auto industry, with spacious seating for six.

##### **Remote Keyless Entry**

Optional Remote Keyless Entry allows you to lock or unlock doors, and unlock the trunk from up to 30 feet away.



*Dual air bags are a new standard safety feature for 1994.*

*A high-strength body structure helps the 1994 Caprice Classic meet strict 1997 Federal safety standards for side impacts today.*



**YOU'LL FEEL SAFE  
AND SECURE IN A  
CAPRICE CLASSIC.**

Your safety and your family's safety were top priorities in the design of the 1994 Caprice Classic.

New dual air bags are designed to provide some additional protection for up to three front-seat occupants in the event of a moderate to severe frontal collision. Significantly, this is one of the best-engineered, most comprehensively tested air-bag systems in the world. But please remember to always wear safety belts, even in cars equipped with air bags.

A four-wheel anti-lock brake system (ABS) is also standard. This accident

avoidance feature enhances the driver's ability to steer around objects during hard braking and provides shorter stopping distances in many circumstances.

Other standard safety features include front and rear crush zones that help absorb energy in a collision, and a rugged safety cage surrounding the entire passenger compartment. This high-strength body structure, with reinforced side-guard door beams, helps the 1994 Caprice Classic meet strict 1997 Federal safety standards for side impacts today. And that's real proof of designed-in Caprice Classic quality.

*Caprice Classic's standard ABS is designed to minimize wheel lockup, to help you maintain steering control during braking, even on slippery surfaces.*





*Caprice Classic LS Sedan  
in Black.*

**CAPRICE CLASSIC LS.**

**IN A CLASS BY ITSELF.**

Caprice Classic LS is the top-of-the-line Chevrolet sedan. And it offers just about anything you could want in a full-size car.

The legendary Caprice ride is as quiet as ever. The new 4300

V8 provides more power than last year's standard V8. And few cars offer more room or luxury features than the Caprice Classic LS.

The beauty of this car is readily apparent. Clean, contemporary lines. Elegant chrome accents and highly detailed cast-aluminum wheels. Standard features include front cornering lamps, tinted glass for all windows, and lustrous

base-coat/clear-coat paint for a deep wet-look shine. Caprice Classic LS is designed to stay beautiful, too, thanks to the use of corrosion-resistant two-side-galvanized steel for all exterior body panels (except the roof), protective body-side moldings, and resilient front and rear bumpers. Also standard: a long-lasting, stainless-steel exhaust system.

There are other cars with all these features, but not at a Caprice Classic price. Sound interesting? Just wait until you turn the page and see the new LS interior.

*The all-new Caprice Classic LS  
instrument panel places all controls  
within easy reach of the driver.*





*Caprice Classic LS interior with optional leather seating surfaces in Ruby.*

## **CAPRICE CLASSIC LS.**

### **WITH LUXURIOUS**

### **COMFORT FOR SIX.**

*A Delco AM/FM stereo with CD player is optional.*



Very few cars today offer an interior as spacious and luxurious as the 1994

Caprice Classic LS. This is a car designed to keep you comfortable,

whether you're driving to work or rolling down the Interstate.

Standard Custom Cloth seats are richly tailored and very supportive. Or choose the optional leather seating surfaces shown above.

The new instrument panel places all controls within easy reach, and includes an easy-to-read digital speedometer and a convenient pull-out cup holder.

Other LS luxury appointments include a reclining 55/45 split-bench front

seat, front- and rear-seat center armrests, door courtesy lamps and storage pockets on front seat-backs. Caprice Classic LS also features power windows with a driver's Express-Down feature, and power door locks.

A Delco AM/FM stereo with a seek-scan feature, cassette tape player and digital clock is standard in Caprice Classic LS. Or you may order the optional Delco AM/FM stereo with integral CD player and Delco-Loc II security feature. Both systems provide sound that is precisely tailored to the interior acoustics of the Caprice Classic.

*Caprice Classic LS Custom Cloth interior in Medium Blue.*





*Caprice Classic Sedan in Medium Garnet Red Metallic.*

*The spacious 20.4-cu.-ft. Caprice Classic trunk. An optional cargo net helps keep small packages secure.*



**CAPRICE CLASSIC.** and full-size comfort of the 1994 Caprice Classic Sedan.

**THE FULL-SIZE CAR WITH** A smooth 200-hp V8 and electronically controlled

**THE MID-SIZE PRICE.** 4-speed automatic transmission deliver refined perfor-

mance. New dual air bags are designed to help protect front-seat occupants and a rugged steel safety cage surrounds the entire passenger compartment.

Four-wheel anti-lock brakes (ABS) are standard. And a Full Coil suspension, rear-wheel drive and full-perimeter frame contribute to the quiet ride and

effortless handling that is a hallmark of the Caprice Classic.

Inside, you are surrounded by tailored cloth upholstery and deep carpeting, all shielded by Scotchgard™ Protector. Standard features include air conditioning with CFC-free refrigerant, an AM/FM stereo with digital clock, pull-down center armrest, a pull-out cup holder, and convenience lighting.

But the greatest luxury of all may be the stretch-out room for six adults. No Mercedes-Benz, no Lexus, and no BMW offers a larger, more accommodating interior than Caprice Classic.

*Caprice Classic interior with optional 55/45 split-bench front seat in Gray.*



**CAPRICE CLASSIC WAGON.**

A minivan just isn't for everyone. Lots of people want the comfort, style and V8 power of a full-size wagon. And if you haven't driven a Caprice

**AN AMERICAN ORIGINAL.**

Classic Wagon in a while, you're in for a real treat. The new 4300 V8 delivers 200 smooth horsepower. Or you can select a new optional 260-hp LT1 V8. You just can't buy a more powerful, more spacious wagon than this Chevrolet.



*Caprice Classic Wagon in Light Driftwood Metallic with optional simulated woodgrain trim.*



*The properly equipped Caprice Classic Wagon will tow up to 5000 lbs.*

Caprice Classic Wagon is the first-class way to travel. You enjoy limousine-like quiet and a beautifully smooth highway ride.

#### **JUST LOOKING AT IT**

#### **MAKES YOU WANT**

#### **TO GO PLACES.**

When it's vacation time, you will appreciate the V8 power and

rear-wheel drive. Significantly, the properly equipped Caprice Classic

Wagon will tow up to 5000 lbs., more than any front-wheel-drive

minivan. Seating is for eight, and when you want to carry cargo, just fold down

the two rear seats for up to 92.7 cu. ft. of space. A two-way tailgate with rear-

window wiper/washer adds to the convenience.

Standard safety features include a four-wheel anti-lock brake system (ABS) and dual air bags. Please remember, always wear safety belts, even with air bags.

Two interiors are available: the standard Caprice Classic cloth (shown on page 13), and optional LS-level Custom Cloth (shown on page 11). For those who prefer the classic look outside, simulated woodgrain exterior trim is optional.

If you're looking for the room, ride and the V8 power that only a full-size wagon can provide, the very capable and very luxurious Caprice Classic Wagon may be exactly what you have in mind.

*The convenient two-way tailgate swings down to form a loading platform or to the side for easy access to the third seat. The rear glass (with standard wiper) swings up and out of the way.*



CAPRICE BUYER'S GUIDE

COLOR AND TRIM AVAILABILITY

	
Black	Medium Adriatic Blue Metallic
	
Light Adriatic Blue Metallic	Purple Pearl Metallic
	
Dark Green-Gray Metallic	Dark Cherry Metallic
	
Medium Garnet Red Metallic	Light Gray Metallic
	
Bright White	Light Driftwood Metallic

EXTERIOR COLORS	INTERIOR COLORS			
	Medium Blue	Medium Beige	Gray	Ruby
Black		•	•	•
Medium Adriatic Blue Metallic	•		•	
Light Adriatic Blue Metallic	•			
Purple Pearl Metallic		•	•	
Dark Green-Gray Metallic		•	•	
Dark Cherry Metallic		•	•	•
Medium Garnet Red Metallic		•	•	•
Light Gray Metallic	•		•	•
Bright White	•	•	•	•
Light Driftwood Metallic		•		
OPTIONAL CUSTOM TWO-TONES				
Black/Medium Gray Metallic			•	•
Light Adriatic Blue Metallic/Medium Gray Metallic	•			
Medium Adriatic Blue Metallic/Medium Gray Metallic	•		•	
Dark Cherry Metallic/Medium Gray Metallic			•	•
Dark Green-Gray Metallic/Light Gray Metallic			•	
Medium Garnet Red Metallic/Medium Gray Metallic			•	•
Bright White/Medium Gray Metallic	•	•	•	•

►—Available.  
NOTE: Two-tones not available on Caprice Classic LS Sedan.

CAPRICE BUYER'S GUIDE  
PREFERRED EQUIPMENT GROUPS

NOTE: These optional Preferred Equipment Groups (PEGs) help simplify the buying process. Just choose the 1994 Caprice PEG containing the equipment you desire. You may also add selected individual options (see Standards & Options chart for model availability). Some restrictions may apply. Please see your salesperson for details.

PREFERRED EQUIPMENT GROUP NUMBER	Caprice Classic		Caprice Classic LS	Caprice Classic Wagon	
	1	2	1	1	2
Electronic Speed Control with Resume Speed	•	•	S		•
Twin Electric Remote Mirrors	•	•	S	•	•
Power Door-Lock System	•	•	S	•	•
Power Windows with Driver's Express-Down Feature	•	•	S		•
Power Trunk Opener	•	•	S		
AM/FM Stereo with Seek-Scan, Cassette Tape Player and Digital Clock		•	S		
Illuminated Right-Hand Visor Mirror		•	S		•
Power Antenna		•	•		•
Power Seat, Driver-Side 6-Way Adjuster		•	S	•	•
Power Seat, Passenger-Side 6-Way Adjuster			•		•
Dual Reading Lamps		•	S		•
Rearview Mirror, Automatic Day/Night			•		•
Rear-Window Defogger and Heated Outside Rearview Mirror			•		•
Remote Keyless Entry System with Trunk Opener			•		
Twilight Sentinel Headlamp System			•		
Rear-Compartment Deluxe Decor					•
Rear-Compartment Reading Lamps		•			•
Rear-Compartment Security Cover					•

•—Included in Preferred Equipment Group.

STANDARDS AND OPTIONS

NOTE: Some individually available options listed below may be included in specific Preferred Equipment Groups (see chart above). Some restrictions may apply. Please see your salesperson for details.

EXTERIOR	Caprice Classic	Caprice Classic LS	Caprice Classic Wagon
Base-coat/clear-coat paint	S	S	S
Dual sport mirrors (left-hand remote)	S	—	S
Dual electric remote sport mirrors	P	S	P
Front cornering lamps	—	S	—
Pin striping	O	S	O
Power antenna	P	P	P
Simulated woodgrain exterior trim	—	—	O
Two-way tailgate with rear wiper/washer	—	—	S
INTERIOR			
Air conditioning (with CFC-free refrigerant)	S	S	S
Cargo net	O	S	O
Carpeted front and rear floor mats	S	S	S
Carpeted load floor and tailgate	—	—	S
Cup holder	S	S	S
Delayed illuminated entry system	S	S	S
Deluxe luggage compartment trim	S	S	—
Driver- and passenger-side air bags	S	S	S
Dual reading lamps in rearview mirror	P	S	P
Instrument panel warning lamps: low-fuel, low-oil, low-washer-fluid levels	S	S	S
Intermittent wiper system	S	S	S
Luggage rack	—	—	S
PASS-Key II theft-deterrent system	S	S	S
Power door-lock system	O	S	O
Power windows with driver's Express-Down feature	P	S	P
Rear-window defogger	O	O	O
Rear-window wiper/washer			S
Remote Keyless Entry system with trunk opener	—	P	—
Seats: Cloth bench with front center armrest	S	—	S
Seats: Cloth 55/45 split-bench front seat	O	—	O
Seats: Leather seating surfaces with 55/45 reclining split front seat and front/rear center armrests	—	O	—
Seats: Custom Cloth upholstery, with 55/45 reclining split front seat and front/rear center armrests	—	S	O*
Tilt-Wheel™ Adjustable Steering Column	S	S	S

\*Front armrest only in Wagon.

DELCO SOUND SYSTEMS	Caprice Classic	Caprice Classic LS	Caprice Classic Wagon
NOTE: All sound systems include an electronically tuned AM/FM stereo with seek-scan and digital clock.			
Stereo: AM/FM	S	—	—
Stereo: AM/FM with cassette tape player (with auto-reverse & coaxial front speakers)	O	S	S
Stereo: AM/FM with compact disc player and Delco-Loc II security feature	O	O	O

POWER TEAMS/CHASSIS			
4300 V8 with Sequential-Port Fuel Injection	S	S	S
5.7 Liter LTI V8 with Sequential-Port Fuel Injection	O	O	O
Transmission: Elect. controlled 4-speed automatic w/Overdrive	S	S	S
Brakes: Power front disc/rear drum with ABS	S	S	S
Limited slip differential	O	O	O
Power steering	S	S	S
Rear-wheel drive	S	S	S
Suspension: Ride & Handling (requires P225/70R-15 tires)	O	O	—
Suspension: Trailering Package (requires other options; see your dealer for details)	O	O	O
Suspension: Automatic leveling	—	—	O
Stainless-steel exhaust system	S	S	S

WHEELS/TIRES			
Wheel covers: 15" x 7" wheels	S	—	S
Wheel covers: 15" x 7" wire wheels w/locks	O	O	O
Wheel covers: 15" x 7" Deluxe	O	—	O
Wheels: 15" x 7" cast-aluminum w/locks	—	S	—
Tires: P215/75R-15 all-season steel-belted radial	S	S	—
Tires: P215/75R-15 all-season steel-belted radial white-stripe	O	O	—
Tires: P225/75R-15 all-season steel-belted radial white-stripe	—	—	S
Tires: P225/70R-15 all-season steel-belted radial white-stripe	O	O	—
Tires: P235/70R-15 Touring	O	O	—
Tires: P235/70R-15 Touring white-stripe	O	O	—
Full-size spare tire	O	O	O

S—Standard. O—Optional. P—Preferred Equipment Group.

DATA

EXTERIOR DIMENSIONS (in.)	Caprice Classic	Caprice Classic LS	Caprice Classic Wagon
Wheelbase	115.9	115.9	115.9
Length (overall)	214.1	214.1	217.3
Width (overall)	77.5	77.5	79.6
Height (overall)	55.7	55.7	60.9
Track width—front	61.8	61.8	62.1
Track width—rear	62.3	62.3	64.1

INTERIOR DIMENSIONS (in.)			
Head room—front	39.2	39.2	39.6
Head room—rear	37.9	37.9	39.4
Leg room—front	42.2	42.2	42.2
Leg room—rear	39.5	39.5	38.0
Shoulder room—front	63.4	63.4	63.4
Shoulder room—rear	63.4	63.4	63.5
Hip room—front	57.0	57.0	56.9
Hip room—rear	56.9	56.9	57.1

CAPACITIES			
Passenger capacity	6	6	8
Luggage capacity (cu. ft.)	20.4	20.4	—
Cargo capacity—w/rear seat up (cu. ft.)	—	—	54.7
Cargo capacity—w/rear seat down (cu. ft.)	—	—	92.7
Fuel tank capacity (gal.)	23.0	23.0	22.0

TRAILERING			
Trailer classification	Heavy	Heavy	Heavy
Gross trailer weight (lbs., up to)	5000*	5000*	5000*
Maximum tongue load (lbs.)	600*	600*	600*

\*When properly equipped with available options.

1994 CAPRICE MODELS



Caprice Classic Sedan



Caprice Classic LS Sedan



Caprice Classic Wagon



Turn Plastic Into Steel With The GM Card<sup>SM</sup>.  
The GM MasterCard®, with no annual fee, is the revolutionary financial vehicle specifically designed to help put you behind the wheel. Every time you use it, GM will credit 5% of your purchase toward buying or leasing the GM car or truck of your dreams. It could mean saving hundreds, even thousands of dollars, over and above any other discounts or rebates. Call 1-800-8GM-CARD for more information, including annual limits and restrictions.

A note about air bags: Always wear safety belts, even with air bags.  
At your Chevrolet dealer, financing or leasing your new Caprice can be as easy as saying GMAC.

