

T H E   N E W   C A M A R O



After all, a car this beautiful doesn't come along every day. And now that you've seen it, we invite you to take a closer look.

GO AHEAD,  
TAKE A LOOK.

The new generation of Camaro is quick, agile and great fun. It is refined, quiet and smooth-riding,

and it looks like it could take center stage at a *concours d'elegance*.

Significantly, the new Camaro meets your high expectations for safety with features that include dual air bags, a four-wheel anti-lock brake system (ABS), energy-absorbing front and rear body structures, and a steel safety cage surrounding the entire passenger compartment. And it will stay new-looking longer, thanks to the extensive use of rustproof, dent-resistant body panels.

*Camaro* has always suggested uniquely American style and performance. In this brochure you'll discover many of the innovations and features that make this the best Camaro ever.

There is really only one way, though, to know what the new Camaro is all about.

Go ahead. Drive it.





IT'S LIKE  
A HEAT WAVE.



*Camaro Coupe in Bright Red  
with optional aluminum wheels.*





IT'S A  
WHOLE NEW KIND  
OF CAMARO.



*Camaro Coupe in  
Medium Quasar Blue Metallic  
with optional fog lamps.*





ENHANCED STOPPING POWER

The new Camaro features ventilated front disc brakes and a four-wheel anti-lock brake system (ABS).

You'll feel secure in a new Camaro. Standard safety features in every 1993 Camaro include a four-wheel anti-lock brake system (ABS) and an air bag for both the driver and the right-front passenger.

#### STANDARD DUAL AIR BAGS

The 1993 Camaro is the first sports car in its price class to include this important safety feature as standard equipment. The driver- and passenger-side air bags complement the lap/shoulder belt system by helping to restrain the driver and front passenger in the event of a moderate to severe frontal impact.

#### STANDARD ABS

ABS is an enhancement to Camaro's normal brake system that improves: • Controllability — the ability to stop the vehicle in a straight line. • Steering ability — the ability to steer around obstacles while braking. • What's more, ABS helps to provide reduced stopping distances on most surfaces.

## IT'S DESIGNED TO A NEW STANDARD OF SAFETY.

#### 1993 SAFETY FEATURES

##### Occupant Protection

- Supplemental Inflatable Restraint, driver and right-front passenger, with manual lap/shoulder safety belts for the driver and right-front passenger, including visual and audible warning system.
- Manual lap/shoulder safety belts, rear-seat positions.
- Energy-absorbing steering column.
- Energy-absorbing instrument panel.
- Interlocking door latches.
- Laminated windshield glass

with urethane bonding. • Side-guard door beams. • Passenger-guard inside door-lock handles. • Safety armrests. • Head restraints, driver and right-front passenger (integral). • Breakaway inside rearview mirror. • Security door-lock and door-retention components.

##### Accident Avoidance

- Side marker lamps and reflectors. • Parking lamps that illuminate with headlamps. • Four-way hazard-warning flashers. • Backup lamps. • Center high-mounted stop lamp. • Directional signal control with lane change feature (turn signal lamp).
- Windshield defroster, washer and multi-speed

wipers. • Inside manual day/night rearview mirror. • Outside left and right rearview mirrors. • Brake system with dual master cylinder and warning light. • Anti-lock brakes. • Starter safety switch. • Dual-action hood latch. • Low-glare finish on inside windshield moldings, wiper arms and blades. • Illuminated heater and defroster controls. • Tires with molded-in tread wear indicators.

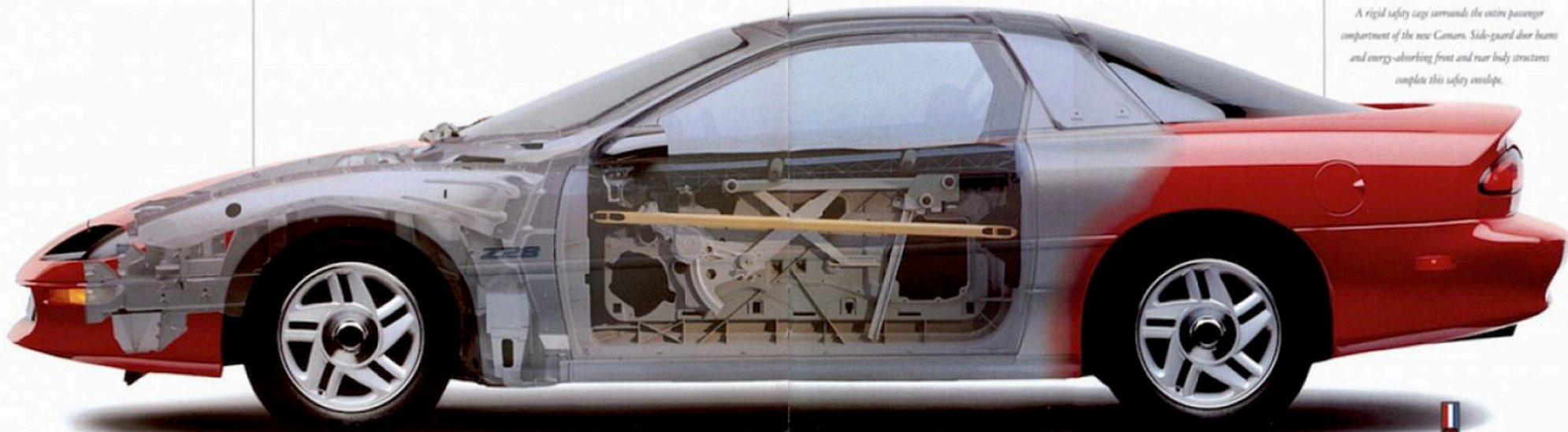


#### DUAL AIR BAGS

Driver- and right-front passenger-side air bags are standard equipment. Always wear safety belts, even with air bags.

#### A SAFETY ENVELOPE

A rigid safety cage surrounds the entire passenger compartment of the new Camaro. Side-guard door beams and energy-absorbing front and rear body structures complete this safety envelope.





#### YOU'RE IN CONTROL.

GM's latest four-wheel anti-lock brake system (ABS VI) is standard. ABS helps provide the driver with the ability to steer around obstacles under severe braking conditions.

#### BEAUTY THAT BOUNCES BACK

Camaro features rustproof, dent-resistant front fenders, roof, and doors for long-term durability in the real world, and the base-out/clear-coat paint delivers a deep, "wet-look" shine that resists damage from airborne chemicals.

## IT'S A SPORTS CAR YOU CAN LIVE WITH.

The 1993 Camaro makes it possible to enjoy a fun-to-drive sports car without sacrificing convenience, practicality and economy.

The beautifully balanced performance begins with a new 3.4 Liter V6 with Sequential-Port Fuel Injection. Horsepower is 160 at 4600 RPM; torque

is 200 lb.-ft. at 3600 RPM. EPA estimated MPG is city 19/highway 28 with either the 5-speed manual transmission or the optional 4-speed automatic.

Camaro's standard dual air bags, four-wheel ABS and PASS-Key II theft-deterrent system may qualify you for insurance discounts. Ask your agent.

Other advanced technology features that make the new Camaro so easy to own include dent-resistant doors and front fenders, and a more rigid body structure for freedom from squeaks and rattles.

Isn't it nice to know the sports car you fall in love with is also a sports car you can live with?



#### ELECTRONIC COUNTERMEASURES

The totally passive PASS-Key II theft-deterrent system is standard in every 1993 Camaro.



#### NON-FREON AC

The 1993 Camaro's available air conditioning system uses a new, more environmentally friendly refrigerant which will not harm the earth's ozone layer.



#### DESIGNED-IN RESPONSE

A new Short/Long Arm (SLA) front-suspension design with stabilizer bar and power rack-and-pinion steering provide precise response to driver input.



#### FUEL-INJECTED V6 POWER

Enjoy V8-like performance and V6 fuel efficiency\* with Camaro's new 3.4 Liter V6.

\*EPA est. MPG city 19/highway 28.

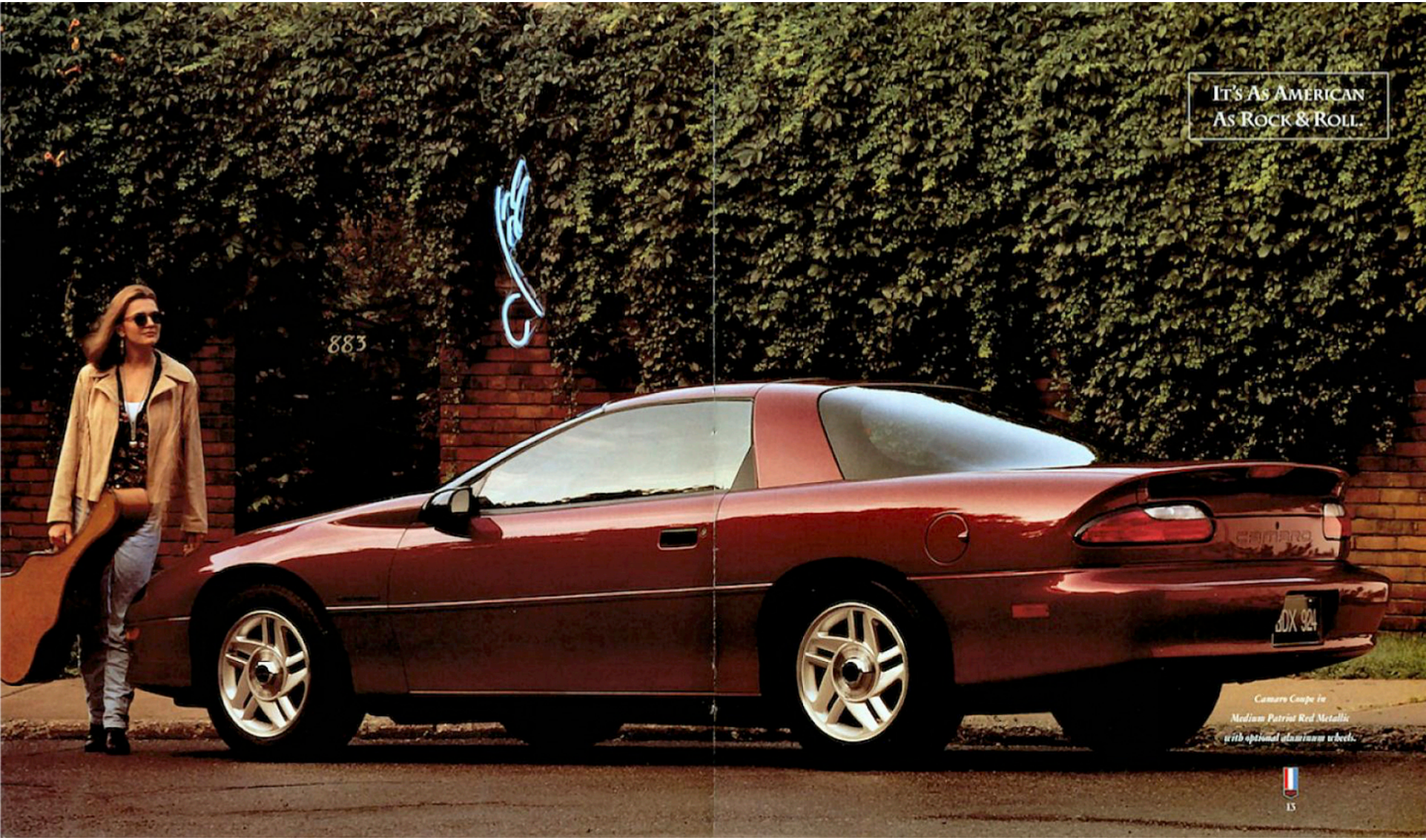


#### ALL-WEATHER TRACTION

Camaro's standard 16-inch all-weather Touring tires deliver a quiet ride and exceptional wet-weather traction.



IT'S AS AMERICAN  
AS ROCK & ROLL.



883

*Camaro Coupe in  
Medium Patriot Red Metallic  
with optional aluminum wheels.*





**IT'S CLEARLY,  
CONCISELY CAMARO.**

This is the way driving was meant to be. Instant response. Great visibility. Precise analog instrumentation, including voltmeter, oil pressure gage, temperature gage and tachometer. Carefully placed controls that are easy to reach and operate. And a driver seat that cradles you in supportive comfort.

In every way, it's everything you'd expect in a great sports car.





*Camaro interior shown in Medium Gray.*

## THIS IS WHERE YOU FIT IN.

Inside Camaro, you'll discover another dimension to Camaro beauty.

The interior fabrics, the sports-car instrumentation, and the many convenience features offer a level of quality that will please even the most discriminating automotive enthusiast.

New standard features for 1993 include an AM/FM stereo with cassette tape player, console-mounted cup holder, and a locking glove box. A Tilt-Wheel™ Adjustable Steering Column is also standard.

Among the options you'll want to consider: a Delco/Bose AM/FM stereo with CD player, a six-way power driver seat, electric remote-control outside mirrors, and an easy-gripping, leather-wrapped steering wheel.

### STORE MORE

*The new Camaro offers up to 32.8 cu. ft. of cargo space with the rear seat folded down, accessible through a wide-opening hatch.*



### ROCK & ROLL NEVER SOUNDED SO GOOD

*An AM/FM stereo with high-performance Bose speakers is optional. This Delco/Bose system is available with a compact disc player (shown) or a cassette tape player.*



### A REFRESHING IDEA

*A console-mounted cup holder adds a new measure of convenience for Camaro drivers.*



### MESS MINIMIZER

*Scotchgard™ Fabric Protector, on seats, door panels, floor carpeting and floor mats, is standard in the new Camaro.*



### COOL VIEW

*The windshield and all windows feature standard Solar-Ray glass, for reduced glare and reduced interior heat buildup.*



### SMOOTH MOVES

*For maximum comfort, order the optional six-way power driver seat.*

IT'S NOT JUST  
A NEW CAMARO,  
BUT A NEW LEVEL  
OF EXCELLENCE.

At the totally revamped assembly plant where the all-new Camaro is built, a vision of the future is taking shape. The goal of the Camaro team members

is simple: to make Camaro the best in the world.

Assembly of the basic Camaro body structure is computer-monitored to maintain precise tolerances, and welding machinery will not activate unless all parts are exactly aligned for proper fit.

New paint technology allows for a brighter palette of colors, and provides greater resistance to fading and weathering. The new paint system also significantly reduces one of the most troublesome types of air pollution from an auto factory.

Before leaving the paint shop, each Camaro is critically examined by a team of inspectors under a bank of "hot" lights. Only flawless paint gets this team's "OK," so every new Camaro owner can enjoy a sports car with a beautiful, glass-smooth finish.

Following a precision wheel alignment and headlamp aiming, every new Camaro is driven to the Dynamic Vehicle Testing (DVT) area. Each car is placed on dynamometer rollers and run to a simulated speed of 65 mph. The engine, transmission

shift points, air conditioning, electronics and cruise control are all checked.

After DVT, every car gets two final inspections before it is allowed to be shipped. The result: the finest-quality Chevrolet Camaro ever.



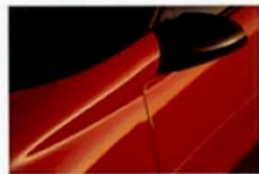
ADVANCED PAINT TECHNOLOGY

New paint technology provides brighter Camaro colors and the added benefit of improved fade and weather resistance. The goal is simple: great cars.



PRECISION FITS

*Precision is emphasized in every phase of Camaro manufacturing and assembly. The benefit to Camaro owners is improved fit, reduced rolling friction and enhanced durability.*

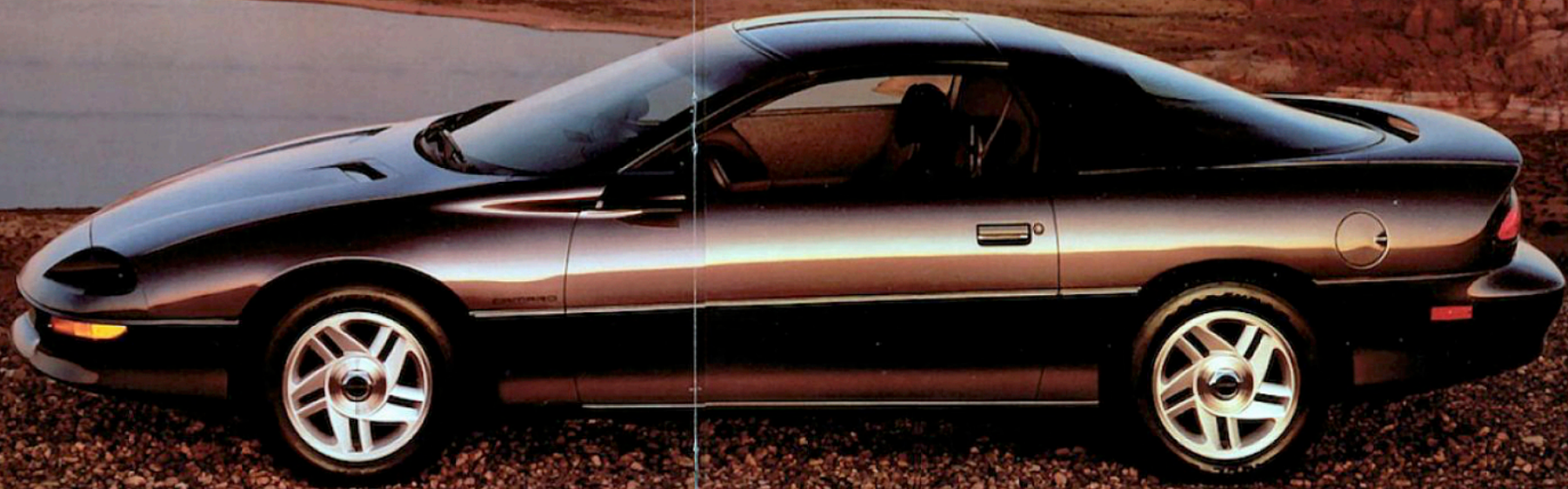


QUALITY EVERY TIME

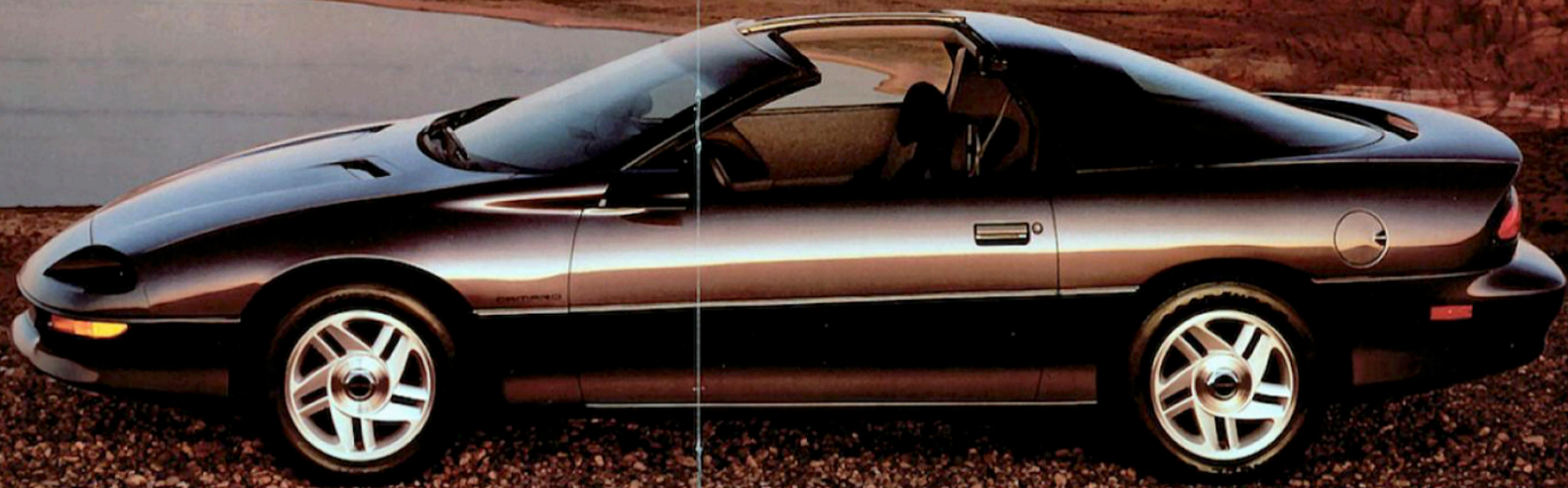
*After the basic body/underbody structure is welded together, a series of laser cameras measure 64 critical dimensions. In a '93 Camaro, everything will fit the way it was designed to fit.*



OPENING SOON  
IN YOUR  
NEIGHBORHOOD.







*Camaro Coupe in Purple Pearl Metallic  
with optional aluminum wheels  
and removable roof panels.*



Enjoy open-air driving with Camaro's optional removable roof panels. Not only does this option add to Camaro fun, it also adds

HAVE A  
CAMARO SUMMER.

to Camaro style with a Special Black Roof Treatment.

The roof panels themselves are deep-tinted, scratch-resistant glass. They are lightweight and lock in place for added security. When removed, the panels may be locked in a special compartment in the rear cargo area.

T-Top-equipped cars are built on the regular Camaro assembly line, to the highest quality standards. Advanced sealing technology is designed to make water and wind leaks a thing of the past; and just to be sure, no T-Top Camaro leaves the factory without passing a final high-pressure water test.

If you love summer driving, you'll want to keep this option open.



*STOW AWAY.*

*When removed, Camaro's lightweight roof panels fit neatly into a special lockable rear compartment.*



Chevrolet is committed, in every way, to making your 1993 Camaro the best car you've ever owned. That commitment starts with a quality car, and it continues with a promise to treat you as a valued customer and a friend. Always.

As a Chevrolet owner, you are covered by a comprehensive owner-protection plan. It includes all of the following:

**CHEVROLET 24-HOUR ROADSIDE ASSISTANCE PROGRAM**

For as long as you own your 1993 Camaro, the security and convenience of round-the-clock roadside assistance is available via a toll-free hot line. Your call will be answered by a Roadside Assistance phone advisor trained by Chevrolet.

You will be placed in contact with a nearby

**THE CHEVROLET PROMISE.**

service center, and assistance with towing and other helpful services will be arranged. Please ask your Chevrolet dealer for more details.

**3-YEAR/36,000-MILE BUMPER TO BUMPER PLUS LIMITED WARRANTY**

GM's 3-year/36,000-mile limited warranty covers repairs for all 1993 Camaros, including labor and parts, to correct any defects in material or workmanship occurring during the warranty period. Warranty features include air conditioning repair, towing, no-cost warranty transfer, 6-year/100,000-mile body sheet-metal rust-through protection

and 5-year/50,000-mile emissions control system coverage. Items not covered include tires (which are covered by their manufacturer), the battery, and normal maintenance. See your Chevrolet dealer for terms of this limited warranty.

**CUSTOMER ASSISTANCE CENTER**

Chevrolet's Customer Assistance Center has a special toll-free 800 number. It puts you in contact with experts who can handle product or service questions you may have with your new Camaro. Call 1-800-222-1020, Monday through Friday, 8:00 a.m. to 7:30 p.m., Eastern Standard Time.

**AMERICA'S LARGEST DEALER NETWORK**

With Camaro, you also get the security of the Chevrolet dealer network — the largest dealer network in the United States.



**ROUND-THE-CLOCK PROTECTION**

The security of 24-hour roadside assistance is available to every Camaro owner via a toll-free hot line.

**BUMPER TO BUMPER PLUS**

GM's 3-year/36,000-mile limited warranty covers repairs for every new 1993 Camaro. The optional GM Protection Plan offers service protection in addition to that provided by GM's new-vehicle limited warranty.

Ask your dealer for details.



*Camaro Coupe in  
Madison Quasar Blue Metallic with  
optional aluminum wheels.*





Z28.  
MAXIMUM  
CAMARO.

*Camaro Z28 Coupe in Black.*

## Z28 AND THE LT1 V8. MADE FOR EACH OTHER.

The 1993 Z28 is the highest-performance regular-production Camaro ever. That's quite a statement, considering some of the Zs that have come before it. But then, this new Z28 is quite a car.

The 5.7 Liter LT1 V8 with Multi-Port Fuel Injection puts Z28 in league with the world's top sports cars. Horsepower is 275 at 5000 RPM; torque is 325 lb.-ft. at 2400 RPM.

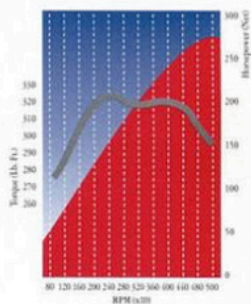
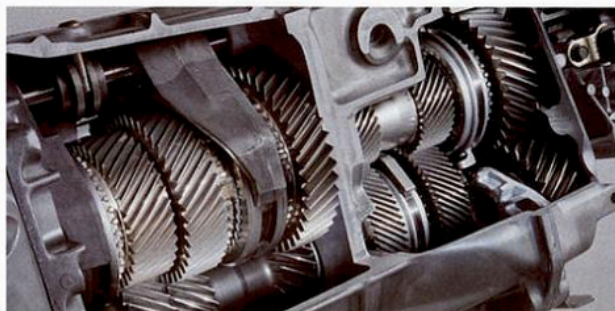
An all-new 6-speed manual transmission is the perfect complement to the high-revving LT1 V8. This 6-speed was designed to handle the massive torque of the Z28 engine, and gear ratios have been carefully chosen to maximize the potential of this world-class powertrain.

For those who prefer the convenience of an automatic transmission, a responsive 4-speed automatic with overdrive is optional.

Back in the sixties, an advertisement for one of the very first Z28s called Camaro "The closest thing to a 'Vette yet." With the debut of the '93 Z28, that's truer than ever.

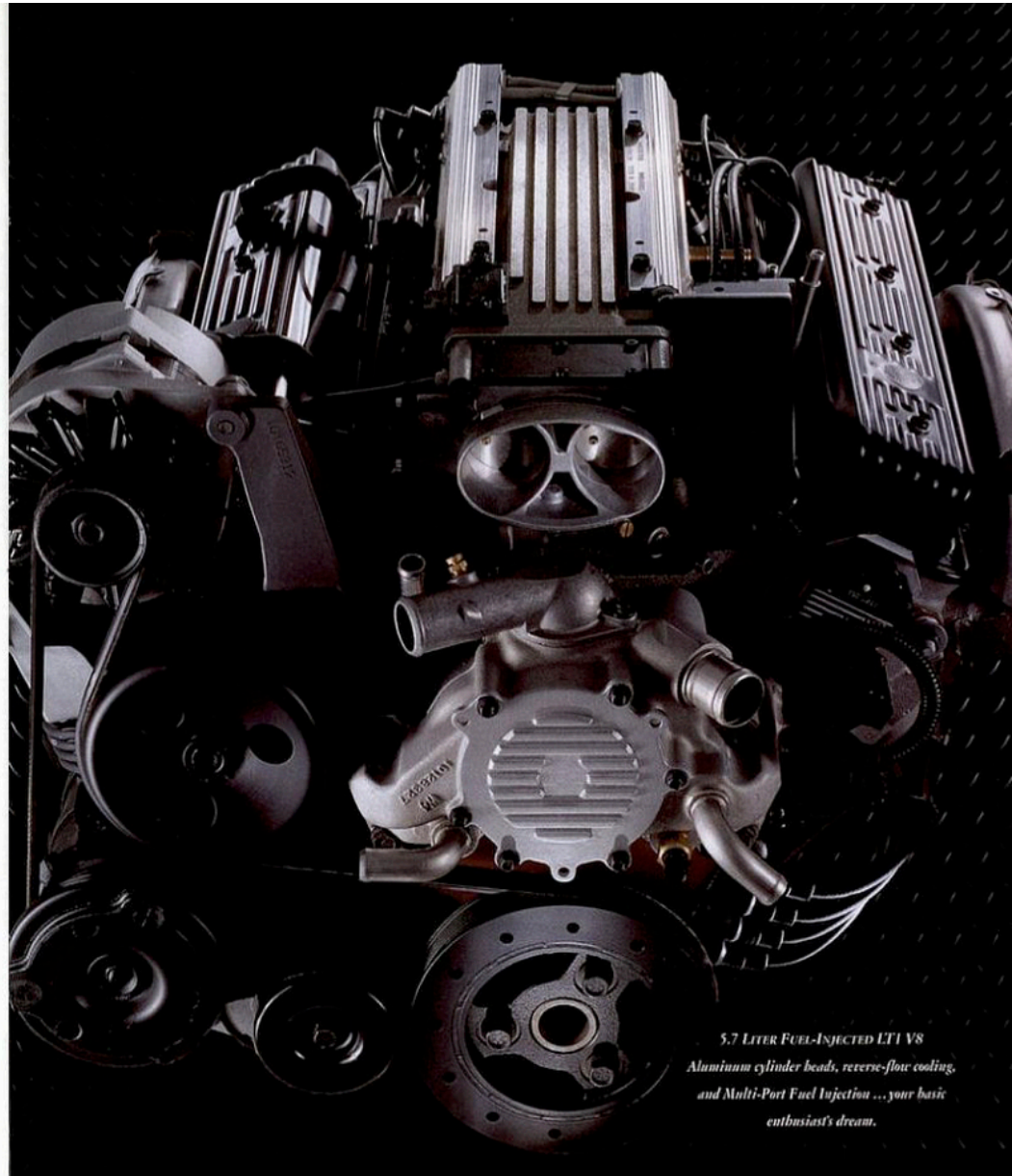
### 6-SPEED GEARBOX

*This slick-shifting gearbox is the perfect complement to the high-revving LT1 V8. A 4-speed automatic is optional.*



### A POWERFUL STATEMENT

*The LT1 V8 in the new Camaro Z28 delivers 275 HP at 5000 RPM and 325 lb.-ft. of torque at 2400 RPM.*



**5.7 LITER FUEL-INJECTED LT1 V8**  
Aluminum cylinder heads, reverse-flow cooling,  
and Multi-Port Fuel Injection ... your basic  
enthusiast's dream.



The Z28 is not for everybody. It speaks most directly to drivers who long for the return of the golden age of performance V8s, but who also want 1990s sophistication.

Z28 scores on both counts.

The LT1 V8 delivers brute force and sweet sounds, but it's the way the Z28 responds to you as a driver that will have you taking the long way home.

The magic is in this car's poise, and it comes from a remarkably solid body structure, a tuned Ride & Handling suspension with front and rear stabilizer bars and special spring rates. Fast-ratio power

Z28.  
WHAT'S IN A NAME?  
PLENTY.

rack-and-pinion steering delivers quick response and great road feel, and a standard limited-slip rear axle enhances traction under many conditions.

You also get world-class stopping power, with a sophisticated four-wheel anti-lock brake system (ABS) and four-wheel disc brakes.



ACCURATE READ

Z28 instrumentation includes analog speedometer, tachometer, voltmeter, oil-pressure gauge and trip odometer.



THE Z28 SIGNATURE

Z28 style features include distinctive badging, 16-inch cast-aluminum wheels and a Special Black Roof Treatment.



HIGH-PERFORMANCE CAPABILITY

Optional Z-rated 16-inch Goodyear Eagle GSC tires provide a superb blend of high-performance grip, wet-weather traction, and quiet highway ride. Goodyear Eagle GA Touring tires are standard.

Z28.  
LOOK INTO THE  
BEST CAMARO EVER.

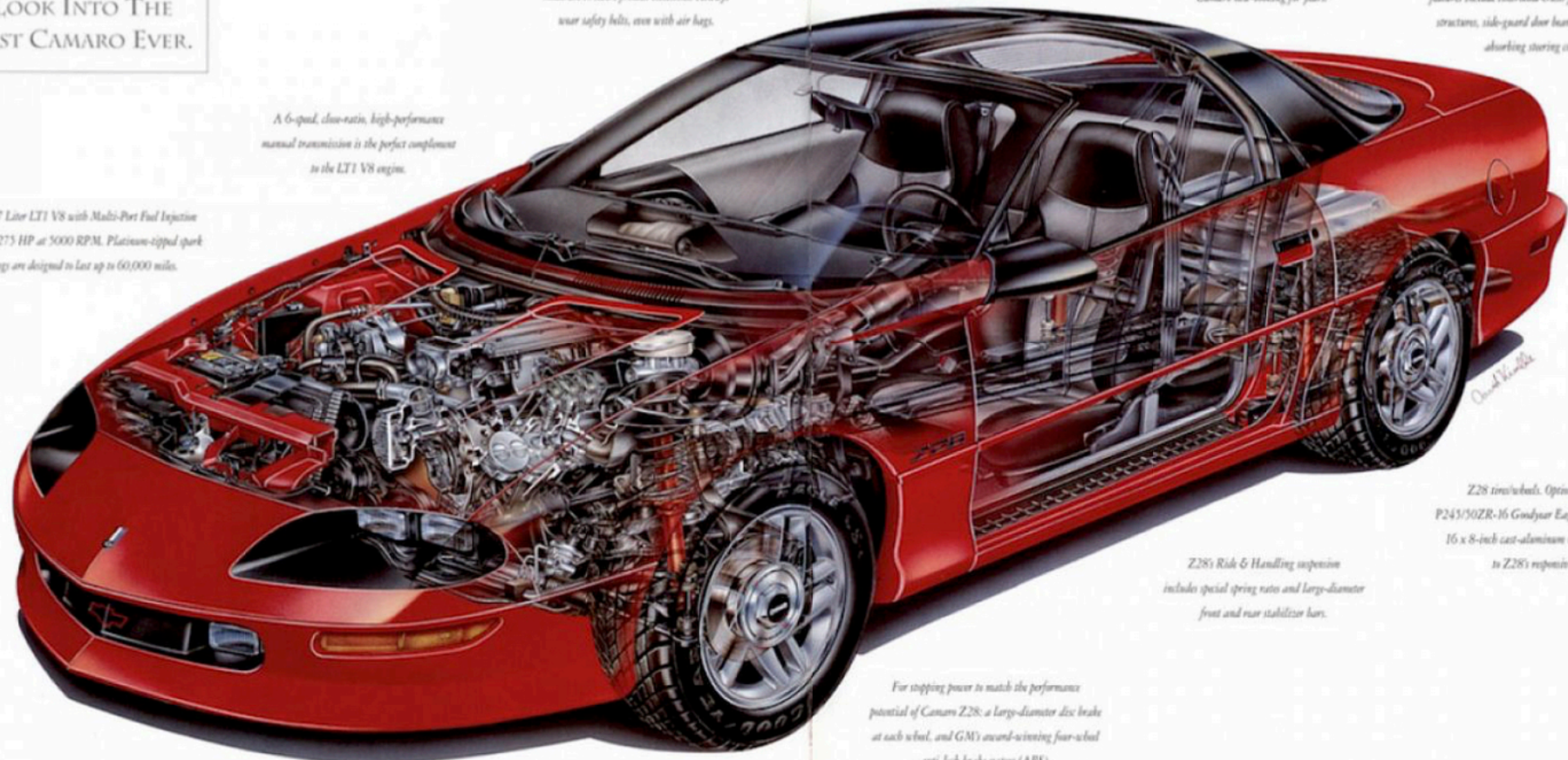
The 5.7 Liter LT1 V8 with Multi-Port Fuel Injection delivers 275 HP at 5000 RPM. Platinum-tipped spark plugs are designed to last up to 60,000 miles.

A 6-speed, close-ratio, high-performance manual transmission is the perfect complement to the LT1 V8 engine.

Driver- and passenger-side air bags are standard. They can help protect front-seat passengers in certain moderate to severe frontal collisions. Always wear safety belts, even with air bags.

Dent-resistant, rustproof composite door panels and front fenders are designed to help keep Camaro new-looking for years.

A rugged steel safety cage surrounds the entire passenger compartment. Other integral safety features include controlled-crush front and rear body structures, side-guard door beams and an energy-absorbing steering column.



Z28 tires/wheels. Optional Z-rated P245/50ZR-16 Goodyear Eagle GSC tires with 16 x 8-inch cast-aluminum wheels contribute to Z28's responsive feel.

Z28's Ride & Handling suspension includes special spring rates and large-diameter front and rear stabilizer bars.

For stopping power to match the performance potential of Camaro Z28: a large-diameter disc brake at each wheel, and GM's award-winning four-wheel anti-lock brake system (ABS).

Precise response to driver input is provided by a new Short/Long Arm (SLA) front suspension, high gas-pressure mountable De Carbon shocks, and power rack-and-pinion steering.

Mini-quad halogen headlamps and optional halogen fog lamps light the way.



Z28.  
AMERICA'S NEXT  
CLASSIC.



*Camaro Z28 Coupe in Arctic White  
with optional removable roof panels.*





## CAMARO BUYER'S GUIDE.

### PREFERRED EQUIPMENT GROUPS

NOTE: These optional Preferred Equipment Groups (PEGs) help simplify the buying process. Just choose the 1993 Camaro PEG containing the equipment you desire. You may also add selected individual options (see Standards & Options chart for model availability). Some restrictions may apply. Please see your salesperson for details.

PREFERRED EQUIPMENT GROUP NUMBER	ALL MODELS
Air conditioning	● ●
Electronic speed control with Resume Speed	● ●
Fog lamps	● ●
Remote hatch release	● ●
Power door-lock system	●
Power windows with driver's Express-Down feature	●
Twin remote electric Sport mirrors	●
Leather-wrapped steering wheel, transmission shifter and parking brake handle	●

### STANDARDS & OPTIONS

NOTE: Some individually available options listed below may be included in specific Preferred Equipment Groups (see chart at left). Some restrictions may apply. Please see your salesperson for details.

EXTERIOR	CAMARO COUPE	Z28 COUPE
Base-coat/clear-coat paint	S	S
Body-side moldings	O	O
Dual sport mirrors (LH remote)	S	S
Front air dam	S	S
Halo fog lamps	O	O
Halo fog headlamps	S	S
Rear deck spoiler	S	S
Sunshades (requires removable roof panels)	O	O
Transparent removable roof panels	O	O
INTERIOR	CAMARO COUPE	Z28 COUPE
Air conditioning	O	O
Auxiliary lighting	S	S
Center console with storage compartment and cup holder	S	S
Deep-well luggage area	S	S
Driver-side and passenger-side air bags	S	S
Intermittent wiper system	S	S
Manual lap/shoulder safety belts for all seating positions	S	S
PASS-Key II theft-deterrent system	S	S
Power door-lock system	O	O
Power driver seat (6-way)	O	O
Rear-window defogger	O	O
Scotchgard™ Fabric Protector on cloth seats, door-panel trim, and carpeting	S	S
Seats: Cloth, with reclining front buckets	S	S
Special instrumentation with tachometer	S	S
Side-window defoggers	S	S
Tilt-Wheel™ Adjustable Steering Column	S	S
Tinted glass—all windows	S	S

### DELCO ETR SOUND SYSTEMS

NOTE: All Camaro stereo sound systems include a Delco ETR electronically tuned AM/FM stereo with seek-scan and digital clock.

Stereo: AM/FM with cassette tape player	S	S
Stereo: Delco Bose AM/FM with cassette tape player	O	O
Stereo: Delco Bose AM/FM with compact disc player	O	O

### POWER TRAINS/CHASSIS

V6 Engine: 3.4 Liter (207 cu. in.) with Sequential-Port Fuel Injection	S	-
V8 Engine: 5.7 Liter LTI (350 cu. in.) with Multi-Port Fuel Injection	-	S
Brakes: Power front disc/rear drum with ABS	S	-
Brakes: Power 4-wheel disc with ABS	-	S
Delco Freedom II Battery	S	S
Engine block heater	O	O
Limited slip differential	-	S
Performance axle ratio	-	O
Power rack-and-pinion steering	S	S
Rear-wheel drive	S	S
Single serpentine belt engine accessory drive	S	S
Stainless-steel exhaust system	S	S
Suspension: Sport	S	-
Suspension: Special Performance Ride & Handling	-	S
Transmission: 5-speed manual	S	-
Transmission: 6-speed manual	-	S
Transmission: 4-speed automatic	O	O

### WHEELS/TIRES

Bolt-on wheel covers	S	-
Wheels: 16 x 8-inch cast-aluminum	O	S
Tires: P215-60R-16 Touring	S	-
Tires: P235-55R-16 Touring	O	S
Tires: P235-50ZR-16 Performance	-	O

S = Standard, O = Optional

NOTE: Tire chains should not be used on Camaros equipped with P235-55R-16 (or P235-50ZR-16) tires because they could cause damage to these vehicles.

### COLOR AND TRIM AVAILABILITY

#### EXTERIOR COLORS



Black



Bright Red



Purple Pearl Metallic



Medium Quasar Blue Metallic



Medium Patriot Red Metallic



Dark Green-Gray Metallic



Arctic White

#### EXTERIOR COLORS

	GRAPHITE	MEDIUM BURG	MEDIUM GRAY
Black	●	●	●
Bright Red	●	●	●
Purple Pearl Metallic	●	●	●
Medium Quasar Blue Metallic*	●	●	●
Medium Patriot Red Metallic	●	●	●
Dark Green-Gray Metallic	●	●	●
Arctic White	●	●	●

● = Available. \*Not available at start of production.

#### EXTERIOR DIMENSIONS (IN.)

	ALL MODELS
Wheelbase	101.1
Length (overall)	193.2
Width (overall)	74.1
Height (overall)	51.3
Tread width—front	60.7
Tread width—rear	60.6

#### INTERIOR DIMENSIONS (IN.)

Head room—front	37.2
Head room—rear	35.3
Leg room—front	43.0
Leg room—rear	26.8
Shoulder room—front	57.4
Shoulder room—rear	55.8

#### CAPACITIES

Passenger capacity	4
Luggage capacity—wear seat up (cu. ft.)	12.9
Luggage capacity—wear seat down (cu. ft.)	32.8
Fuel tank capacity (gal.)	15.5

#### TRAILERING

Trailer classification	Light
Gross trailer weight (lbs., up to*)	1500†
Maximum tongue load (lbs.)	150**

\*Including trailer, cargo, passengers and equipment.

†1000 under extreme conditions (long grade @ high ambient temperatures).

\*\*1000 under extreme conditions.

#### A WORD ABOUT ENGINES.

Chevrolts are equipped with engines provided by different operating units of GM, its subsidiaries or suppliers to GM worldwide.

#### A WORD ABOUT CORROSION PROTECTION.

Chevrolts are designed and built to resist corrosion. All body sheet-metal components are warranted against rust-through corrosion for 6 years/100,000 miles. Application of additional rust-inhibiting materials is not required under the corrosion coverage.

#### A WORD ABOUT ASSEMBLY.

Chevrolts are assembled by different operating units of General Motors, its subsidiaries or suppliers to GM worldwide. Chevrolts incorporate thousands of components produced by different operating units of GM, its subsidiaries or suppliers to GM worldwide. We sometimes find it necessary to produce Chevrolts with different or differently sourced components than originally scheduled. All such components have been approved for use in Chevrolts and will provide the quality performance associated with the Chevrolet name. Since some options may be unavailable when your vehicle is assembled, we suggest that you verify that your vehicle includes the equipment you ordered, or if there are changes, that they are acceptable to you.

#### A WORD ABOUT SERVICE INFORMATION.

Chevrolet regularly sends its dealers useful service bulletin about Chevrolet products. Chevrolet maintains product performance in the field. We then prepare bulletin for servicing our products better. Now you can get these bulletins, too. Ask your dealer. To get ordering information, call toll free 1-800-551-4132.

#### IMPORTANT: A WORD ABOUT THIS CATALOG.

We have tried to make this catalog as comprehensive and factual as possible. We reserve the right, however, to make changes at any time, without notice, in prices, colors, materials, equipment, specifications, models and availability. Since some information may have been updated since the time of printing, please check with your Chevrolet dealer for complete details.

AT YOUR CHEVROLET DEALER, financing or leasing your new Camaro can be as easy as saying GMAC.

Camaro, the Camaro Emblem, Chevrolet, the Chevrolet Emblem, Corvette, General Motors, GM and the GM Emblem are registered trademarks and Chevy and Silverado are trademarks of the General Motors Corporation. GMAC is a registered trademark of the General Motors Acceptance Corporation. PASS-Key is a registered trademark of the Delco Electronics Corporation.

©1992 General Motors Corporation. All rights reserved.



Litho in U.S.A. 5224 December 1992



Camaro Coupe.



Camaro Z28 Coupe.



THE NEW CAMARO:  
BACK HOME AGAIN  
IN INDIANA.

When the 1993 Camaro Z28 takes its place at the head of the field to pace the 77th running of the Indy 500, it will be a beautiful moment in Indianapolis Motor Speedway history — and a proud moment for Chevrolet.



FOREGROUND:  
1993 Camaro Z28 Coupe  
with optional Indy Pace Car Package.

BACKGROUND:  
1967 Camaro SS396 Indy Convertible (left),  
1969 Camaro SS396 Indy Convertible (center),  
1982 Camaro Z28 Indy Coupe (right).



