

# CAPRICE

1988 CHEVROLET



# CAPRICE

## CONTENTS

### 4 CAPRICE

Electronic Fuel Injection. AM/FM stereo sound system. Headlamps-on reminder chimes. Even the least-expensive full-size Chevrolet has a list of standard features that goes on and on.



### 8 CAPRICE CLASSIC BROUGHAM

A formal padded top. Plush fabrics. Optional leathers. Caprice Classic Brougham offers luxury to rival the costliest cars. Choose from two Brougham models for 1988.

### 12 CAPRICE CLASSIC WAGON

Room for up to eight. A huge cargo area. Plus the full-size Chevy's traditional towing power. The luxurious Caprice Classic Wagon is simply one of the most versatile automobiles you can buy.



### 15 OPTIONAL EQUIPMENT

From sophisticated music systems to electronic speed control, the 1988 Caprice offers a wide array of optional equipment. And new option packages make the buying process easier than ever before.



	Page
Caprice	4
Caprice Classic	6
Caprice Classic Brougham	8
Caprice Classic Wagon	12
Standards/Colors	14
Optional Equipment	15
Safety Features	17
Additional Information	17

Shown on cover: Caprice Classic Brougham LS Sedan.



# CAPRICE

1988



Caprice model  
Sedan (shown).

Caprice Classic Brougham models  
Sedan (shown).  
LS Sedan.

Caprice Classic models  
Sedan.  
Wagon (shown).

The classic American full-size car, completely uncompromised. That's Chevrolet Caprice for 1988.

Caprice continues to provide the true six-passenger spaciousness you desire, with the comfort and quiet you expect from a luxury sedan. And Caprice delivers all this at a Chevrolet price.

## Caprice Technical Basics

A smooth, hushed ride is an important reason for the enduring popularity of Caprice. The technology that contributes to this car's acclaimed road manners includes:

- A full-perimeter frame with 16 cushioned body mounts for excellent structural strength and

isolation from road noise.

- Proven rear-drive design for well-balanced handling and impressive towing capacity.
- The standard 4.3 Liter V6 with Electronic Fuel Injection offers horsepower rivaling that of some V8s (not available on Caprice Classic Wagon).
- For even more power, a 5.0 Liter

V8 with 4-barrel carburetor is optional (standard on Caprice Classic Wagon).

- Standard 4-speed automatic overdrive transmission lowers engine RPM at highway speeds.

## Three Distinct Series

Caprice rewards you with an uncommon luxury, the choice of

five models within three series. Select from:

- The Caprice series. A well-equipped four-door sedan with a base price far lower than you might expect.
- The Caprice Classic series. Perennially popular and beautifully appointed, Caprice Classic is available as a four-door sedan

or four-door, three-seat wagon.

- The Caprice Classic Brougham series is Chevrolet's finest expression of full-size elegance. Choose from the Brougham Sedan or the Brougham LS Sedan with its exclusive landau-style roof treatment.

## Extensive Anti-Corrosion Protection

The 1988 Caprice is carefully designed and built to resist corrosion, so the application of additional rustproofing is neither necessary nor required. Chevrolet's confidence in its extensive anti-corrosion protection is reflected

in a new-car warranty which includes 6-year/100,000-mile rust-through protection. See your dealer for terms and conditions of the limited warranty.

# CAPRICE

SEDAN



Caprice Sedan with optional body-side and wheel-opening moldings.



A roomy 20.9-cu.-ft. trunk is one of Caprice's many virtues.



Standard cloth interior features foam-cushioned cloth seats and a front pull-down center armrest.

Caprice Sedan is one of America's lowest-priced full-size cars. Yet it offers a generous level of standard equipment that is matched by few cars.

## Standard Exterior Features

- Composite-style halogen headlamps.
- Bright rocker panel moldings.
- Dual aero-style exterior mirrors.
- Full wheel covers.

## Standard Interior Appointments

- Ample room for six adults. In fact, Caprice Sedan provides more total interior room than any Mercedes-Benz sedan.
- Over 20 cu. ft. of luggage space.
- A Delco AM/FM stereo music system with Seek and Scan and digital clock.\*
- Full-width front bench seat with deep foam cushioning and pull-down center armrest. For even greater comfort, order the optional 50/50 front seat with twin armrests and reclining passenger seat-back.
- Cloth interior trim in Dark Blue, Maroon, Gray or Light Brown.
- Tinted glass, all windows.
- Headlamps-on reminder chimes.
- Lockable glove box with light.
- Instrument panel courtesy lights.

## Still the Standard

In an era in which "improved" too often translates to "smaller," Caprice remains an uncompromised standard of full-size value.

\* May be deleted for credit.



# CAPRICE

## CLASSIC

Since 1977, Caprice Classic has consistently received outstanding reviews from the automotive press. Caprice Classic for 1988 is designed to uphold this tradition of excellence.

Features of this uplevel series include:

### A Luxurious Interior

- Soft-knit velour trim in Dark Blue, Gray, Maroon or Light Brown.
- A deeply contoured front bench seat with pull-down center armrest.



Caprice Classic Sedan interior.

- Padded door panels with pull straps and carpeted lower areas.
- Additional sound insulation for an especially quiet ride.

### Optional 50/50 Seating

The optional 50/50 front seat provides greater individualized comfort with twin pull-down center armrests and a passenger-side reclining seat-back.

### An Elegant Exterior Appearance

The distinctive style of Caprice Classic is enhanced by:

- Wide lower body moldings.
- Wheel opening moldings.
- Full wheel covers.
- Front and rear bumper rub strips.

### The Critics' Choice

Uncompromised room, ride, comfort and style. These are the attributes of an American institution, Caprice Classic by Chevrolet.



Caprice Classic Sedan with optional body-side moldings, wire wheel covers and other options.

# CAPRICE

CLASSIC BROUGHAM



Caprice Classic Brougham Sedan with optional body-side moldings, cornering lamps, wire wheel covers and other options.

We proudly present Caprice Classic Brougham as the most exclusive way to say Chevrolet. From its stand-up hood ornament to bold taillight ensemble, Brougham quietly announces your preference for formal elegance in a highly contemporary motor car.

## Caprice Classic Brougham LS

*La crème de la crème Chevrolet.* Brougham LS delivers luxury on top of luxury with:

- A padded landau-style rear roof treatment.
- Center pillar opera lamps.
- LS monograms on rear quarter windows.

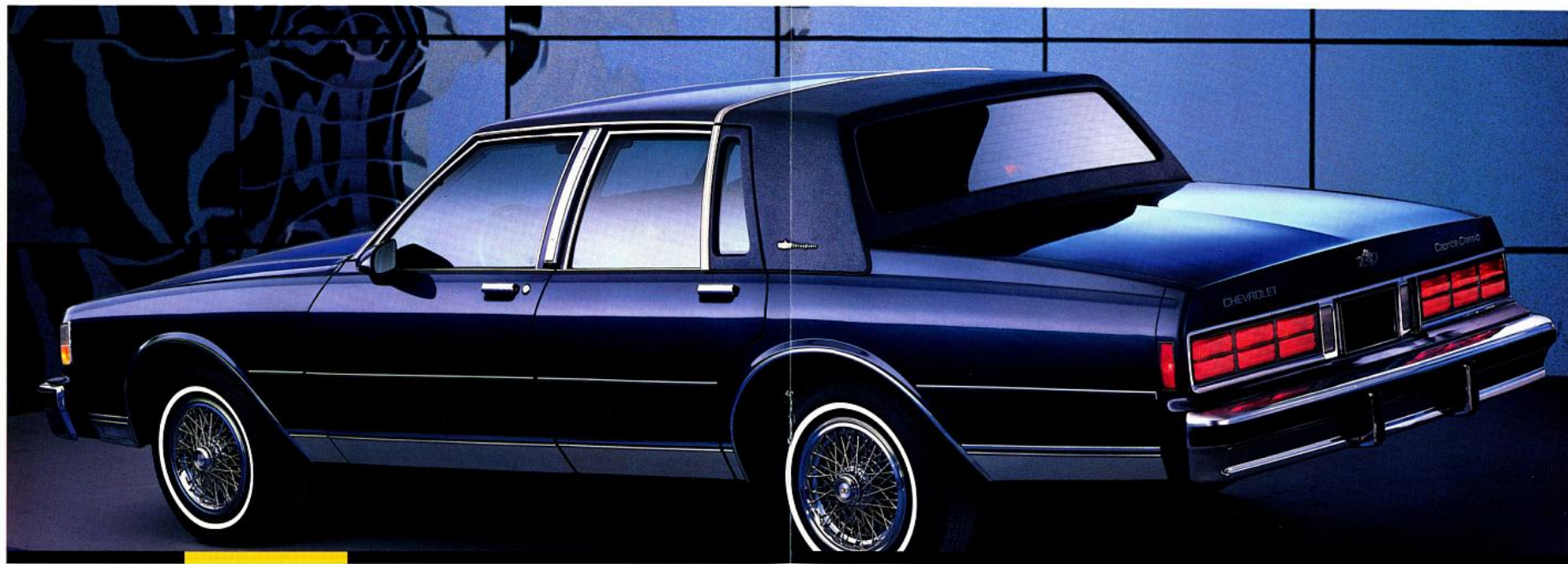
## Brougham Exterior Features

- Padded full vinyl roof covering with inset rear window.
- Bright brushed-aluminum center pillar applique.
- Custom wheel covers.
- Brougham nameplates.

## Exterior Option Highlights

Exterior options that complement the elegant flavor of Caprice Classic Brougham include:

- Wire wheel covers with locks.
- Cornering lamps.
- Front and rear bumper guards.



Caprice Classic Brougham LS Sedan with optional body-side moldings, cornering lamps, wire wheel covers and other options.



# CAPRICE

## CLASSIC BROUGHAM INTERIOR



Caprice Classic Brougham interior, shown with optional genuine leather seating surfaces.



Brougham instrument panel with optional Special Instrumentation.

It is hard to imagine a more accommodating travel companion than Caprice Classic Brougham. This car's six-passenger interior is not merely luxurious, it is an environment of decided character.

### Caprice Classic Brougham Interior Features

Appointments of the most exclusive Chevrolet interior include:

- Contoured pillow-type seating for six.
- Standard velour fabric in a choice of four colors.
- Optional leather seating surfaces in a choice of three colors.
- A 45/55 split front seat with pull-down center armrest and reclining passenger seat.
- A rear-seat pull-down center armrest.
- Plush 20-oz. cut-pile carpeting.
- Auxiliary lighting, including dome reading lamp, individual front door courtesy lamps, luggage compartment lamp and underhood lamp.
- Bright-trimmed accelerator and brake pedals.

### Interior Option Highlights

You may wish to enhance the Caprice Classic Brougham interior by selecting from option packages containing the following equipment:

- New Twilight Sentinel headlamp control automatically turns headlamps on and off in response to outside lighting conditions. It also includes an adjustable time delay feature to light your way as you leave your Caprice.
- AM/FM music system with graphic equalizer, cassette player and digital clock.
- Six-way power seat (driver or driver and passenger).
- Power windows and power door locks.
- Comfortilt steering wheel.
- Special Instrumentation, including temperature gage, trip odometer and voltmeter.

### An Uncompromised Luxury Car

If you desire a full measure of luxury, the quiet world of Caprice Classic Brougham awaits your critical inspection.

# CAPRICE

## CLASSIC WAGON

Everything a full-size wagon should be, Caprice Classic still is.

It's roomy and luxurious. Its standard V8 delivers excellent towing power. And its long 116" wheelbase and Full Coil suspension provide a beautifully smooth ride.

### Caprice Classic Wagon Versatility

- The Classic Wagon offers room for up to eight passengers with a standard rear-facing third seat.
- Cloth upholstery with front pull-down center armrest is standard; all-vinyl trim is optional.
- With both rear seats folded down, over 87 cu. ft. of load space

is accessible through a convenient three-way tailgate.

- Standard equipment includes a lively 5.0 Liter V8 with 4-barrel carburetor and 4-speed automatic overdrive transmission. This powerful combination enables the properly equipped Caprice Classic Wagon to tow up to 5,000 lbs. See your Chevrolet dealer and/or the 1988 Chevrolet Recreation and Trailering Guide for details.
- Standard heavy-duty F40 suspension and P225/75R-15 white-wall tires help give every Caprice Classic Wagon impressive load ratings.
- The lockable underfloor storage

age compartment offers 4.5 cu. ft. of additional luggage space. A smaller rear quarter compartment features a cover that folds out to become a handy utility tray.

- Other standard wagon features include an electric tailgate window, tailgate-ajar warning lamp, rear area ashtray and courtesy lamps.

### Specific Wagon Options

- The adjustable roof carrier adds both style and utility.
- Inflatable rear shock absorbers.



Caprice Classic Wagon with optional roof carrier, body-side moldings and other options.

### Choose From Two Exterior Appearances

- Caprice Classic Wagon features standard exterior trim corresponding to Caprice Classic Sedan.
- For those who prefer the rich look of simulated wood-grain paneling, the Caprice Classic may be ordered with the optional Estate Package.

### The Uncompromised Wagon

Caprice Classic, America's best-selling full-size station wagon, offers convincing proof that bigger is often measurably better.

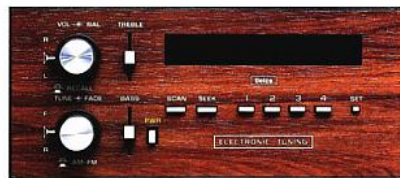


Caprice Classic Estate Wagon with optional wire wheel covers, roof carrier and other options.



# CAPRICE

## STANDARDS/OPTIONS



Delco AM/FM stereo sound system with digital clock is standard on all 1988 Caprice models.\*  
\*May be deleted for credit.

A comprehensive array of standard features is one reason Chevrolet Caprice is one of today's best automotive values.



Aero-style dual sport mirrors (left-hand remote, right-hand manual).



Standard full wheel cover (Caprice and Caprice Classic models).



Composite-style halogen headlamps feature flush-fitting lenses and replaceable bulbs.

windshield wiper/washer) • Stand-up hood ornament • Tinted glass, all windows.

### Caprice Classic

In addition to or replacing standard Caprice equipment:

- Bright body-side lower moldings • Carpeted door trim panels with cloth inserts • Front and rear bumper rub strips • Front and rear door pull straps • Front and rear wheel opening moldings • Instrument panel courtesy lamps • Quiet Sound Group.

### Caprice Classic Brougham

In addition to or replacing standard Caprice Classic equipment:

- Padded full vinyl roof with smaller rear window • Bright/brushed center pillar applique • Bright trimmed brake and accelerator pedals • Brougham nameplates • Custom wheel covers • Exclusive 45/55 cloth front seat • Pull-down armrests, front and rear • Front door courtesy and warning lamps and dome/map lamp • Special 20-oz. floor carpeting.

### Caprice Classic Brougham LS

In addition to or replacing standard Caprice Classic Brougham equipment:

- Door center pillar opera lamps • LS monograms on rear quarter windows • Padded landau-style rear roof treatment.

White



Beige\*



\*Not available Brougham LS

### INTERIOR COLORS

MODEL	Seat Type	Dark Blue	Gray	Maroon	Light Brown
Caprice Classic Brougham and Brougham LS Sedan	Cloth 45/55	■	■	■	■
	Leather 45/55	■	■	■	■
Caprice Classic Sedan and Wagon	Cloth Bench	■	■	■	■
	Cloth 50/50	■	■	■	■
	Vinyl Bench*	■	■	■	■
	Vinyl 50/50*	■	■	■	■
	Cloth Bench†	■	■	■	■
Caprice Sedan	Cloth 50/50	■	■	■	■
	Vinyl Bench	■	■	■	■
	Vinyl 50/50	■	■	■	■

\*Wagon only †Standard in sedan

### EXTERIOR COLORS

	Dark Blue	Gray	Maroon	Light Brown
Black	■	■	■	■
Dark Blue Metallic	■			
Light Blue Metallic*	■			
Light Brown Metallic*				■
Dark Brown Metallic*				■
Medium Gray Metallic		■	■	
Dark Red Metallic*		■	■	
Dark Maroon Metallic		■	■	
White	■	■	■	■
Beige*				■

### CUSTOM TWO-TONE COLORS\*

Black/Medium Gray Metallic	■
Dark Blue Metallic/Light Blue Metallic	■
Light Brown Metallic/Dark Brown Metallic	■
Medium Gray Metallic/Dark Maroon Metallic	■
Dark Maroon Metallic/Dark Red Metallic	■

### VINYL ROOF COLORS

White, Black, Dark Blue Metallic, Light Brown Metallic, Dark Maroon and Medium Gray Metallic (Vinyl roof colors available depending on exterior color(s) selected).

\*Not available Brougham LS

Convenient option packages make it easy to tailor Caprice to your specifications. Choose the model and the package containing

the equipment you desire, then select from the list of individual options. It's that simple.

### Option Packages

Additional options may be ordered from individual option listing only.

CAPRICE SEDAN OPTION PACKAGES	1	2	3
Standard Equipment Package 1	■		
Option Package 2			
Air Conditioning		■	■
Body-Side Moldings		■	■
Carpeted Front and Rear Floor Mats		■	■
Speed Control, Electronic with Resume Speed		■	■
Steering Wheel, Comfortfit		■	■
Wheel Opening Moldings		■	■
Option Package 3			
Auxiliary Lighting			■
Intermittent Wipers			■
Power Door Locks			■

CAPRICE CLASSIC SEDAN OPTION PACKAGES	1	2	3	4
Base Option Package 1	■			
Option Package 2				
Air Conditioning		■	■	■
Carpeted Front and Rear Floor Mats		■	■	■
Body-Side Moldings		■	■	■
Intermittent Wipers		■	■	■
Speed Control, Electronic with Resume Speed		■	■	■
Steering Wheel, Comfortfit		■	■	■
Option Package 3				
Auxiliary Lighting			■	■
Front and Rear Bumper Guards			■	■
Power Door Locks			■	■
Power Trunk Opener			■	■
Power Windows			■	■
Twin Remote Mirrors			■	■
Option Package 4				
Cornering Lamps				■
Door Edge Guard Moldings				■
Luggage Compartment Trim, Deluxe				■
Mirror, Right-Hand Visor, Illuminated				■
Radio Equipment, AM/FM Stereo Radio w/Seek and Scan, Stereo Cassette Tape Player, Dual Rear Speakers and Digital Clock*				■
Radio Equipment, Power Antenna†				■
Special Instrumentation				■
Twilight Sentinel Headlamp Control				■

\*May be deleted for credit  
†Deleted when radio is deleted



# CAPRICE

## OPTIONS

CAPRICE CLASSIC BROUGHAM SEDAN OPTION PACKAGES	1	2	3
<b>Standard Equipment Package 1</b>	■		
<b>Option Package 2</b>			
Air Conditioning	■	■	■
Body Side Moldings	■	■	■
Carpeted Front and Rear Floor Mats	■	■	■
Front and Rear Bumper Guards	■	■	■
Intermittent Wipers	■	■	■
Radio Equipment: AM/FM Stereo Radio w/Seek and Scan, Stereo Cassette Tape Player, Dual Rear Speakers and Digital Clock*	■	■	NI
Power Six-Way Driver's Seat	■	■	■
Power Door Locks	■	■	■
Power Trunk Opener	■	■	■
Power Windows	■	■	■
Speed Control, Electronic with Resume Speed	■	■	■
Steering Wheel, Comfortilt	■	■	■
Twin Remote Sport Mirrors	■	■	■
<b>Option Package 3</b>			
Cornering Lamps	■	■	■
Deluxe Luggage Compartment Trim	■	■	■
Door Edge Guard Moldings	■	■	■
Radio Equipment: Electronically Tuned AM/FM Stereo Radio w/Extended Range Sound (ERS™) System, Seek and Scan, Stereo Cassette Tape Player, Graphic Equalizer and Digital Clock*	■	■	■
Radio Equipment, Power Antenna†	■	■	■
Right-Hand Visor, Illuminated Mirror	■	■	■
Special Instrumentation	■	■	■
Twilight Sentinel Headlamp Control	■	■	■

NI: Not included. \*May be deleted for credit.

CAPRICE CLASSIC WAGON OPTION PACKAGES	1	2	3	4
<b>Base Option Package 1</b>	■			
<b>Option Package 2</b>				
Body Side Moldings	■	■	■	■
Electronic Speed Control with Resume Speed	■	■	■	■
Intermittent Wipers	■	■	■	■
Power Tailgate Lock	■	■	■	■
Roof Carrier	■	■	■	■
Steering Wheel, Comfortilt	■	■	■	■
<b>Option Package 3</b>				
Auxiliary Lighting	■	■	■	■
Carpeted Front and Rear Floor Mats	■	■	■	■
Carpeted Load Floor	■	■	■	■
Power Door Locks	■	■	■	■
Power Windows	■	■	■	■
Twin Remote Sport Mirrors	■	■	■	■
<b>Option Package 4</b>				
Cornering Lamps	■	■	■	■
Deluxe Rear Compartment Decor	■	■	■	■
Front and Rear Bumper Guards	■	■	■	■
Illuminated Right-Hand Visor Mirror	■	■	■	■
Radio Equipment: AM/FM Stereo Radio w/Seek and Scan, Stereo Cassette Tape Player, Dual Rear Speakers and Digital Clock*	■	■	■	■
Radio Equipment, Power Antenna†	■	■	■	■
Special Instrumentation	■	■	■	■
Twilight Sentinel Headlamp Control	■	■	■	■

\*May be deleted for credit.  
†Deleted when radio is deleted.

INDIVIDUAL OPTIONS (May be added with any option package if not already included.)	Caprice Classic Brougham	Caprice Classic Sedan	Caprice Classic Wagon	Caprice Sedan
Air Conditioning	O	O	S	O
Body Pin Stripping	O	O	O*	O
Custom Two-Tone Paint	O*	O	O*	O
Engine Block Heater	O	O	O	O
Estate Equipment	NA	NA	O	NA
5.0 Liter V8	O	O	S	O
Heavy-Duty Cooling	O	O	O	O
Heavy-Duty Suspension	O	O	S	O
Limited Slip Rear Axle (not available with performance ratio axle)	O	O	NA	O
Power Door Lock System	O	O	O	O
<b>Radios:</b>				
AM/FM Stereo w/Seek and Scan, Stereo Cassette Tape Player, Digital Clock	O	O	O	O
AM/FM Stereo w/ERS System, Seek and Scan, Stereo Cassette Tape Player w/Search and Repeat, Graphic Equalizer	O	O	O†	O
Radio Delete	O	O	O	O
Rear Air Deflector	NA	NA	O	NA
Rear Air Shock Absorbers	NA	NA	O	NA
Rear Window Defogger	O	O	O	O
<b>Seat Styles and Options:</b>				
Cloth Bench Seat	NA	O	S	S
Cloth 50/50 Seat	NA	O	O	O
Cloth 45/55 Seat	S	NA	NA	NA
Leather 45/55 Seat	O	NA	NA	NA
Six-Way Power Driver Seat	O	O	O	NA
Six-Way Power Passenger Seat	O	O	O	NA
Vinyl Bench Seat	NA	NA	O	O
Vinyl 50/50 Seat	NA	NA	O	O
Sport Suspension (requires P225/ 70R-15 tires)	O	O	NA	O
<b>Tires and Wheels:</b>				
P205/75R-15 B/W Tire	S	S	NA	S
P205/75R-15 W/W Tire	O	O	NA	O
P225/75R-15 W/W Tire	NA	NA	S	NA
P225/70R-15 W/W Tire (Sedans; required with F41 Sport Suspension)	O	O	NA	O
Custom Wheel Covers	S	O	O	O
Wire Wheel Covers with Locks	O	O	O	O
Vinyl Roof	S	O	NA	O

S: Standard. O: Optional. NA: Not Available.  
†Does not include ERS system.

\*Not available Brougham LS or Estate Wagon.



Electronic speed control with accelerate/decelerate and resume features.



Power windows and power seat controls.



Custom wheel covers (standard on Caprice Classic Brougham).



Wire wheel covers with integral locks.

### SAFETY FEATURES

#### Occupant Protection

- Manual lap/shoulder safety belts for driver and right front passenger (driver side includes visual and audible warning system)
- Manual lap safety belts at each rear seat and center front position
- Energy-absorbing steering column
- Energy-absorbing instrument panel
- Energy-absorbing seat-back tops, front
- Laminated safety windshield glass
- Safety interlocking door latches
- Side-guard door beams
- Passenger-guard inside door lock handles
- Safety armrests
- Head restraints, driver and right front passenger (adjustable)

#### Accident Avoidance

- Side marker lights and reflectors
- Parking lamps that illuminate with headlamps
- Four-way hazard warning flasher
- Backup lights
- Center high-mounted stop lamp
- Directional signal control with lane-change feature
- Windshield defroster, washer and multi-speed wipers
- Inside rearview mirror
- Outside left and right rearview mirrors
- Brake system with dual master cylinder and warning light
- Starter safety switch
- Dual-action hood latch
- Low-glare finish on inside windshield moldings, wiper arms and blades, metallic steering wheel surfaces
- Illuminated heater and defroster controls
- Tires with built-in tread-wear indicators

#### Theft Deterrence

- Audible reminder for ignition key removal
- Theft-deterrent steering column lock
- Visible vehicle identification number

#### Important:

#### A Word About This Catalog.

We have tried to make this catalog as comprehensive and factual as possible. However, since the time of printing, some of the information may have been updated. Also, some of the equipment shown or described throughout this catalog is available at extra cost. Your dealer has details and, before ordering, you

should ask him to bring you up to date. The right is reserved to make changes at any time, without notice, in prices, colors, materials, equipment, specifications and models. Check with your Chevrolet dealer for complete information.

#### A Word About Assembly, Components and Optional Equipment in These Chevrolets.

The Chevrolets described in this catalog are assembled at facilities operated by General Motors. These vehicles incorporate thousands of different components produced by car groups and various component divisions of General Motors and by various suppliers worldwide to General Motors. From time to time during the manufacturing process, it may be necessary, in order to meet public demand for particular vehicles or equipment, or to meet federally mandated emissions, safety and fuel economy requirements, or for other reasons, to produce Chevrolet products with different components or differently sourced components than initially scheduled. All such components have been approved for use in Chevrolet products and will provide the quality performance associated with the Chevrolet name.

With respect to extra-cost optional equipment, make certain you specify the type of equipment you desire on your vehicle when ordering it from your dealer. Some options may be unavailable when your car is built. Your dealer receives advice regarding current availability of options. You may ask your dealer for this information. GM also requests the dealer to advise you if an option you ordered is unavailable. We suggest that you verify that your car includes the optional equipment you ordered or, if there are changes, that they are acceptable to you.

#### A Word About Engines.

Chevrolets are equipped with engines produced by GM or suppliers to GM worldwide.

**Chevrolet's Best Protection Plan Ever.** A 6-year/60,000-mile warranty demonstrates the confidence that Chevrolet has in Caprice quality. This new limited warranty covers powertrains for 6 years/60,000 miles and includes 6-year/100,000-mile rust-through protection. See your Chevrolet dealer for the terms and conditions of this limited warranty.

#### GM Protection Plan.

The GM Protection Plan offers service protection in addition to that provided by GM's new-vehicle limited warranty. Ask your dealer about it. Coverage available only in U.S. and Canada.

#### A Word About Updated Service Information.

Chevrolet regularly sends its dealers useful service bulletins about Chevrolet products. Chevrolet monitors product performance in the field. We then prepare bulletins for servicing our products better. Now you can get these bulletins, too. Ask your dealer. To get ordering information, call toll-free 1-800-551-4123.

**More Dealers to Serve You.** With nearly 5,000 servicing dealers nationwide, Chevrolet offers a more extensive parts/service network than any other automaker.

**At your Chevrolet dealer's, financing or leasing your new Caprice can be as easy as saying GMAC.**

Let's get it together, buckle up.





THE  
*Heartbeat*  
OF  
AMERICA.  
TODAY'S CHEVROLET 

