

S-10 BLAZER

1988 CHEVY TRUCKS



4

S-10 BLAZER. The standard models live up to very high standards of quality—inside and out. Whether 2WD or 4x4, the base S-10 Blazer is a carefully crafted people-pleaser.



6

S-10 BLAZER TAHOE. Now you're talking luxury. The optional Tahoe Trim Package features a number of interior (and exterior) touches above and beyond standard content.



S-10 Blazer Models	2-3
Standard S-10 Blazer	4-5
Tahoe Trim Package	6-7
High Country Package	8-9
Sport Trim Package	10-15
Standard/Optional Equipment	16-18
Specifications/Dimensions	19
Interior/Exterior Colors	20



8

S-10 BLAZER HIGH COUNTRY. Reserved for the 4x4 S-10 Blazer driver who wants a very-distinctive-looking sport utility vehicle—and interior comforts that surpass even the Tahoe trim.



16

S-10 BLAZER OPTIONS. For those who like their S-10 Blazer personalized, there's an extensive list of appearance, convenience, performance and heavy-duty equipment options.



10

S-10 BLAZER SPORT. In developing the Sport, Chevy truck designers have put maximum styling touches and comforts into S-10 Blazer—without modifying its fun-loving personality.

Shown on cover: 4x4 S10 Blazer in Apple Red with optional Tahoe trim. Tires supplied by various manufacturers.

Best-backed Chevys ever. Every new light-duty Chevy truck is now backed by 6-year/60,000-mile powertrain warranty protection and 6-year/100,000-mile outer-body rust-through protection. Solid proof of the confidence we have in the quality built into every new Chevy light-duty truck.



See your Chevrolet dealer for terms and conditions of the limited warranty.

2WD Blazer
Standard trim.
Tahoe trim (shown).
Sport trim.



2WD S-10 Blazer. (Shown with optional Tahoe trim and optional Special Two-Tone in Apple Red and Silver Metallic.) America's most popular two-wheel-drive sport utility vehicle,* this stylish, unconventional transportation offers a surprising number of comfort features, plus station-wagon versatility, all on a

rugged Chevy truck frame. Features include:

- Standard front bucket seats.
- An optional rear bench seat for two additional passengers, which folds flat to create 67.3 cu. ft. of cargo space.
- A standard 1000-lb. payload capacity (includes driver, passengers and cargo).

- A maximum 5000-lb. towing capacity (includes trailer, passengers and cargo), when properly equipped.

- Standard 2.5 Liter Tech IV engine or optional 2.8 Liter V6, both with Electronic Fuel Injection. (A 4.3 Liter V6 with EFI will be available in April 1988.)

- A standard 5-speed manual

or optional 4-speed automatic transmission, both with overdrive.

- Standard low-pressure gas shocks and a road-smoothing, fully independent front suspension that lets the front wheels react individually to the road.

4x4 S-10 Blazer
Standard trim.
Tahoe trim.
High Country option package (shown).
Sport trim.



4x4 S-10 Blazer. (Shown with optional High Country package and optional Custom Two-Tone in Midnight Black and Yukon Gold Metallic.) America's most popular four-wheel-drive sport utility vehicle,* this off-road-oriented adventurer has all of the 2WD model's capabilities and more. It is distinguished

from the 2WD model by all of the following:

- Insta-Trac — the patented 4x4 system that makes four-wheeling as easy as shifting an automatic transmission. With Insta-Trac, there are no hubs to lock, no multiple levers to shift. And you can shift from 2-wheel drive to 4-wheel-drive High and back

again at any speed.

- A lighted 4x4 console display indicates the driving mode with every shift of gears.

- 2.8 Liter V6 with EFI is standard in the 4x4 model. (A 4.3 Liter V6 with EFI will become available in April 1988.)

- Power steering is also standard.
- A generous 6.3-inch front/

7.2-inch rear ground clearance lets 4x4 Blazer go places passenger cars cannot.

Tires supplied by various manufacturers.

*Manufacturer's Reported Retail Deliveries for the first nine months of the 1987 model year.

There is something decidedly rich about the outward appearance of an S-10 Blazer with standard exterior trim. A number of features combine to make a styling statement worthy of much more expensive vehicles:

- Chromed front and rear bumpers with black rub strips.
- Bright metal hubcaps with black trim on 2WD models and black hub covers on 4x4 models.
- Aerodynamically shaped, black painted right-hand and left-hand outside mirrors.
- Argent painted wheels.

Look inside the standard S-10 Blazer and you'll discover its interior has also elevated the meaning of the word "standard."

- A comfortable traveling environment for up to four adults. The high-back front bucket seats are foam-padded, as is the optional folding rear bench seat.
- Tinted glass on all windows.
- Color-keyed steering wheel.
- Side window defoggers.
- Color-keyed door panels with map pockets.

■ Entry to the optional rear seat is easy with a "memory" right front seat. Just fold the passenger seat forward and push for rear access. The front "memory" seat will return to its original setting with just a nudge.

- Color-keyed rubber mat for the entire floor area.

■ Headlamps-on warning buzzer.

■ Passenger grab handle over right-hand door (4x4 model only).

- 28.1 cu. ft. of luggage space behind the optional folding rear bench seat (increasing to 67.3 cu. ft. when seat is folded down).



4x4 S-10 Blazer in Aspen Blue Metallic. Tires supplied by various manufacturers.



S-10 Blazer interior with high-back front bucket seats and optional rear seat in standard vinyl.



The up-level Tahoe trim really puts the S-10 Blazer squarely into the category of very nice truck—very nicely appointed, inside and out. In addition to or replacing standard S-10 Blazer equipment, the optional Tahoe Custom Trim Package features:

EXTERIOR

- Black body-side moldings with bright trim.
- Bright wheel opening moldings.
- Bright wheel trim rings.
- Body-color door handle inserts.
- Black applique on tailgate with bright "Chevrolet" lettering.

INTERIOR

- "Tahoe" nameplate on storage box door.
- A choice of Custom Vinyl or Special Custom Cloth seat trim. (Genuine leather seat trim and reclining high-back bucket seats are optional at extra cost.)

2WD S-10 Blazer with optional Tahoe trim, optional Rally Wheels, and other options. A properly equipped S-10 Blazer can tow up to 5000 lbs., including trailer, passengers and cargo. Tires supplied by various manufacturers.

- Color-keyed carpeting for the entire floor area.
- Gage package including volt-meter, oil pressure gage, engine temperature gage and trip odometer.
- Zippered rear storage pockets. (included with optional rear seat only).
- Color-keyed spare tire cover.
- Special Custom Cloth door trim panels with carpeted lower insert, pocket and coin holder in driver door.
- Color-keyed cowl kick panels.
- Carpeted lower rear quarter and endgate panels.
- Right-hand visor mirror.



S-10 Blazer vinyl interior in Red with optional Tahoe trim and optional rear seat.

4x4 S-10 Blazer interior in Saddle with High Country option package, optional rear seat and optional leather inserts in all seating surfaces.



4x4 S-10 Blazer with High Country option package. Tires supplied by various manufacturers.



Many people in the market for an S-10 Blazer are a little partial to the 4x4 model. If you're one of them, you may want your S-10 Blazer to be especially rich in 4x4 style and luxury. That's what the High Country option package is all about.

INTERIOR

- Reclining front seat-backs.
- Deep-tinted glass (with light-tinted rear window).
- Center storage console.
- The High Country package requires these options: Tahoe or Sport trim, a Saddle interior, Custom Two-Tone paint and white-lettered tires.

EXTERIOR

- Midnight Black/Nevada Gold Custom Two-Tone paint.
- Graduated-color body-side decals.
- Black chrome grille.
- Black chrome headlamp trim, tail-lamp trim, door handles and nameplates.
- Black Below Eyeline mirrors.
- Color-keyed front and rear bumpers.
- Special gold-tone aluminum wheels.

Quite simply, it doesn't get any better than this: The Sport Trim Package is the top-of-the-line S-10 Blazer trim option, available for both 2WD and 4x4 models.

The Sport package includes all the items in the Tahoe package, plus a number of additions or tasteful alternatives.

From the outside, several features combine to distinguish the S-10 Blazer Sport:

- Sport Two-Tone paint.
- Rally Wheels (2WD model).
- Argent wheels with black hub covers (4x4 model).
- Color-keyed front and rear bumpers with black rub strips.

■ Black chrome grille and headlamp bezels.

■ Black plastic wheel opening and body-side moldings.

■ Bright wheel trim rings.

■ Black chrome door handles.

From the inside...well, the inside deserves a presentation all its own. Just turn the page.

4x4 S-10 Blazer with optional Sport Two-Tone in Yukon Gold Metallic and Midnight Black, optional Sport Trim and other options. Tires supplied by various manufacturers.





4x4 S-10 Blazer cloth interior in Saddle with optional Sport trim package.

The Deluxe Cloth upholstery on the S-10 Blazer Sport's reclining front bucket seats is a major indication that trucking has indeed come a long way. (Genuine leather seating surfaces are available at extra cost.) Other Sport interior trim features include:

- Bright "Sport" nameplate on stowage box door.
- Deluxe Cloth trim panel inserts.
- Color-keyed Sport steering wheel with the appearance of leather.
- Color-keyed center console with lockable compartment.



The S-10 Sport, like all S-10 Blazer models, has a convenient drop-down tailgate and lift-up glass window for fast, easy loading. With the optional rear bench seat folded down, there are 67.3 cu. ft. of luggage space. And for extra-long loads you can leave the tailgate down.



The instrument panel in S-10 Blazer Sport (identical to that found in Tahoe) makes an excellent first impression. In large part because it is laid out so functionally. Imagine your-

self with so much instrumentation within easy view or easy reach.

■ A comprehensive gage package consisting of voltmeter, oil pressure gage, engine tempera-

ture gage, fuel gage and trip odometer. (A tachometer is available at extra cost.)

■ Illuminated controls for lights, heater, optional rear defogger, optional air conditioning and

optional Delco stereo sound system.

■ An easy-to-read bar graph speedometer.

■ Gray textured trim on instrument cluster faceplate.

S-10 Blazer Sport instrument panel with gage package and bar graph speedometer.

S-10 Blazer's standard features are listed below. You may also wish to personalize your new S-10 Blazer by selecting from the options listed and pictured on these pages.

STANDARD INTERIOR

- Armrests: RH and LH, padded.
- Ashtray: Instrument panel.
- Cigarette lighter.
- Coat Hook: RH side.
- Dome Lamps: Front and rear, with door-operated switches.
- Door Trim Panels: Color-keyed molded plastic.
- Grab Handle: Over RH door (4x4 models only).
- Headliner: Color-keyed cloth, full coverage.
- Heater and Defogger: Out-side-air-type.
- Hood Lock Release: Inside-operated.
- Instruments: Gages—Speedometer, odometer, fuel.
- Switches: Lights, for interior, exterior and instrument panel, on steering column for direction signal, headlamp high and low beams, windshield washers/wipers. Hazard warning, heater fan and ignition with key-in warning buzzer. Door-operated dome lamp.

- Insulation and Sound-Deadening Material: Under floor mats, inside of doors, underside of roof and on headliner.
- Lights: Instrument cluster, dome lamps and glove box.
- Mirror, Rearview: 10" prismatic.
- Safety Belts: All seating positions.
- Seats: Foam-padded driver and passenger; high-back buckets with Custom Vinyl trim.
- Spare Tire Carrier: Inside vehicle on LH side behind wheelhousing.

STANDARD EXTERIOR

- Bumpers: Front and rear, chromed with black rub strips.
- Fuel Tank: 20-gal.
- Glass: Tinted, all windows.
- Grille: Chrome and black.
- Horn: Single electric, high note.



Optional combination inside rearview mirror with self-contained map-reading lights.

EXTENSIVE ANTI-CORROSION PROTECTION

The 1988 S-10 Blazer is carefully designed and built to resist corrosion, so the application of additional rustproofing is neither necessary nor required.

Chevrolet's confidence in its extensive anti-corrosion protection is reflected in a new-truck warranty which includes 6-year/100,000-mile rust-through protection. See your dealer for terms and conditions of the limited warranty.



Optional AM/FM stereo radio with Seek and Scan, graphic equalizer, cassette tape player and digital clock.

- Steering Column and Wheel: 15 1/4" soft color-keyed plastic 2-spoke wheel with color-keyed energy-absorbing column.
- Stowage Box: RH side of instrument panel, with key lock.
- Sunshades: Padded, color-keyed RH and LH.
- Tools: Scissor-type jack and wheel wrench with covered storage bracket on LH rear quarter panel below window.
- Warning Lights: Generator, oil pressure, engine temperature, seat belt, service/parking brake, direction/hazard signal and high beam.

- Hubcaps: Bright metal with black trim on 2WD, black plastic hub cover on 4x4.
- Lights: Backup lamps integral with tail lamps, rectangular headlamps, front and rear parking lamps, marker lamps, direction and hazard lamps.
- Mirrors: Black painted RH and LH, aerodynamic.
- Tailgate and Lift-Glass: Hinged; cable checks on tailgate and gas cylinders on lift-glass, key-operated latch handle.
- Wheels: Painted argent.
- Windshield Wipers and Washers: Electric, two-speed.



Optional electronic speed control and intermittent wipers are on the standard multi-function lever.

APPEARANCE AND CONVENIENCE OPTIONS

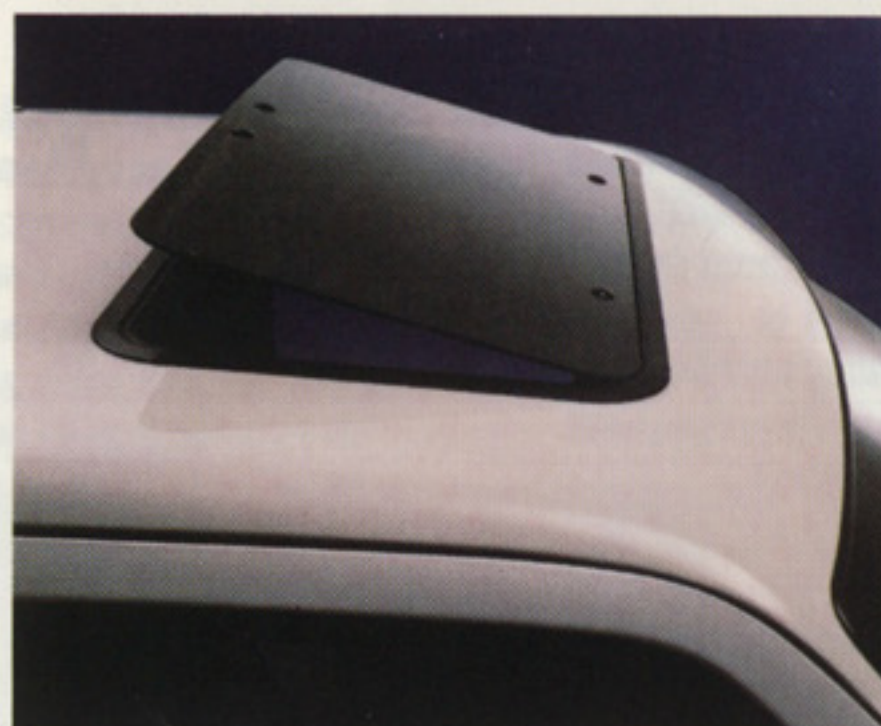
	Standard	Tahoe	Sport
Air Conditioning	■	■	■
Bumper Equipment: Front and Rear — Painted, Color-Keyed (requires Two-Tone paint)	■	■	■
Bumper Guards, Front Black	■	■	■
Center Console, Floor-Mounted	■	■	■
Color-Keyed Floor Mats	■	■	■
Comfortilt Steering Wheel	■	■	■
Defogger, Rear Window	■	■	■
Gages: Voltmeter, Temperature, Oil Pressure with Trip Odometer	■	■	■
Glass:			
Deep-Tinted	■	■	■
Deep-Tinted with Light-Tinted Rear Window	■	■	■
Intermittent Windshield Wipers	■	■	■
Lighting Equipment: Engine Compartment Lamp	■	■	■
Halogen Headlamps	■	■	■
Luggage Carrier and/or Rear Air Deflector	■	■	■
Mirrors (Outside):			
Dual Below Eyeline Type, Painted	■	■	■
Dual Below Eyeline Type, Chrome	■	■	■
Mirrors (Inside):			
Combination Inside Rearview Mirror with Map Reading Lights	■	■	■
Moldings:			
Body-Side and Wheel Opening	■	■	■
Door Edge Guards	■	■	■
Wheel Opening, Bright	■	■	■
Wheel Opening, Black	■	■	■



Optional Comfortilt steering wheel.

	Standard	Tahoe	Sport
Operating Convenience Package includes:			
Power Door Locks, Power Windows	■	■	■
Paint Options:			
Custom Two-Tone	■	■	■
Rally Striping (reqs. solid paint)	■	■	■
Special Two-Tone	■	■	■
Striping (requires solid paint)	■	■	■
Sport Two-Tone	■	■	■
Sunshine Striping (reqs. solid or Custom Two-Tone paint)	■	■	■
Power Door Locks	■	■	■
Power Side Door Windows	■	■	■
Power Steering (Std. in 4x4 models)	■	■	■
Radio Equipment, Delco:			
AM/FM Electronically Tuned Receiver (ETR™) Stereo Radio	■	■	■
AM/FM ETR Stereo w/Digital Clock and Seek and Scan	■	■	■
AM/FM ETR Stereo w/Premium Dual Rear Speakers, Cassette Tape Player, Seek and Scan and Digital Clock	■	■	■
AM Stereo*/FM ETR Stereo w/Premium Dual Rear Speakers, Graphic Equalizer, Seek and Scan, Cassette Tape Player with Search and Repeat, and Digital Clock	■	■	■
Speakers, Premium Dual Rear	■	■	■
Seats, Folding Rear Bench	■	■	■
Sliding Rear Quarter Window	■	■	■
Spare Tire Cover	■	■	■
Speed Control, Electronic	■	■	■
Sunroof	■	■	■
Tachometer	■	■	■
Tailgate Window Release, Power	■	■	■
Wheels:			
Rally (2WD models)	■	■	■
Cast Aluminum (4x4 models)	■	■	■
Wheel Trim: Bright Trim Rings	■	■	■
Outside Spare Tire Carrier (reqs. full-size spare)	■	■	■

■: Standard. ■: Optional. ■: Not Available. *Receives C-Quam® AM Stereo broadcasts. Most AM stereo stations across the country broadcast in C-Quam but some do not. Check with your local stations for compatibility in your area. Some options may require purchase of other options. See your dealer for details.



Optional tinted sunroof (manually operated).

S-10 Blazer with these options: luggage rack, rear window defogger, air deflector, load-distributing hitch platform, rear spare tire carrier (tire cover included but not shown) and cast-aluminum wheels (on the vehicle and with the spare tire). Tires supplied by various manufacturers.



Optional Rally Wheels (2WD only).



Optional cast-aluminum wheels (4x4 only).



OPTIONAL EQUIPMENT PERFORMANCE AND HEAVY-DUTY EQUIPMENT OPTIONS

- Cold Climate Package
- Cooling, HD: Radiator, Transmission Oil Cooler
- Heavy-Duty Battery
- Heavy-Duty Front and Rear Shocks

- Limited Slip Rear Axle Differential
- Off-Road Chassis Equipment (4x4 models)
- Trailering Special Equipment
- Transfer Case Shield (4x4 models).



Brush guard is a dealer-installed option.

ENGINE SPECIFICATIONS

	2.5 (151) Tech IV w/EFI*	2.8 (173) V6 w/EFI	4.3 (262) V6 w/EFI†
Displacement—Liter (cu. in.)			
Engine Ordering Code	LN8	LL2 ^(A)	LB4
Bore & Stroke (in.)	4.00 x 3.00	3.50 x 2.99	4.00 x 3.48
Compression Ratio	8.3 to 1	8.9 to 1	9.3 to 1
SAE Net HP @ RPM	92 @ 4400	125 @ 4800	160 @ 4000
SAE Net Torque (lb.-ft.) @ RPM	130 @ 3200	150 @ 2400	230 @ 2400

*2WD models only. †Will become available April 1988. (A) Produced in Canada and Mexico.

EQUIPMENT TO PLOW

With the proper equipment, 4x4 S-10 Blazer is ready for work when the snow starts to fly. For snowplowing, the 2.8 Liter V6, automatic transmission, heavy-duty front suspension and other optional equipment are required. See your Chevy dealer for complete details.

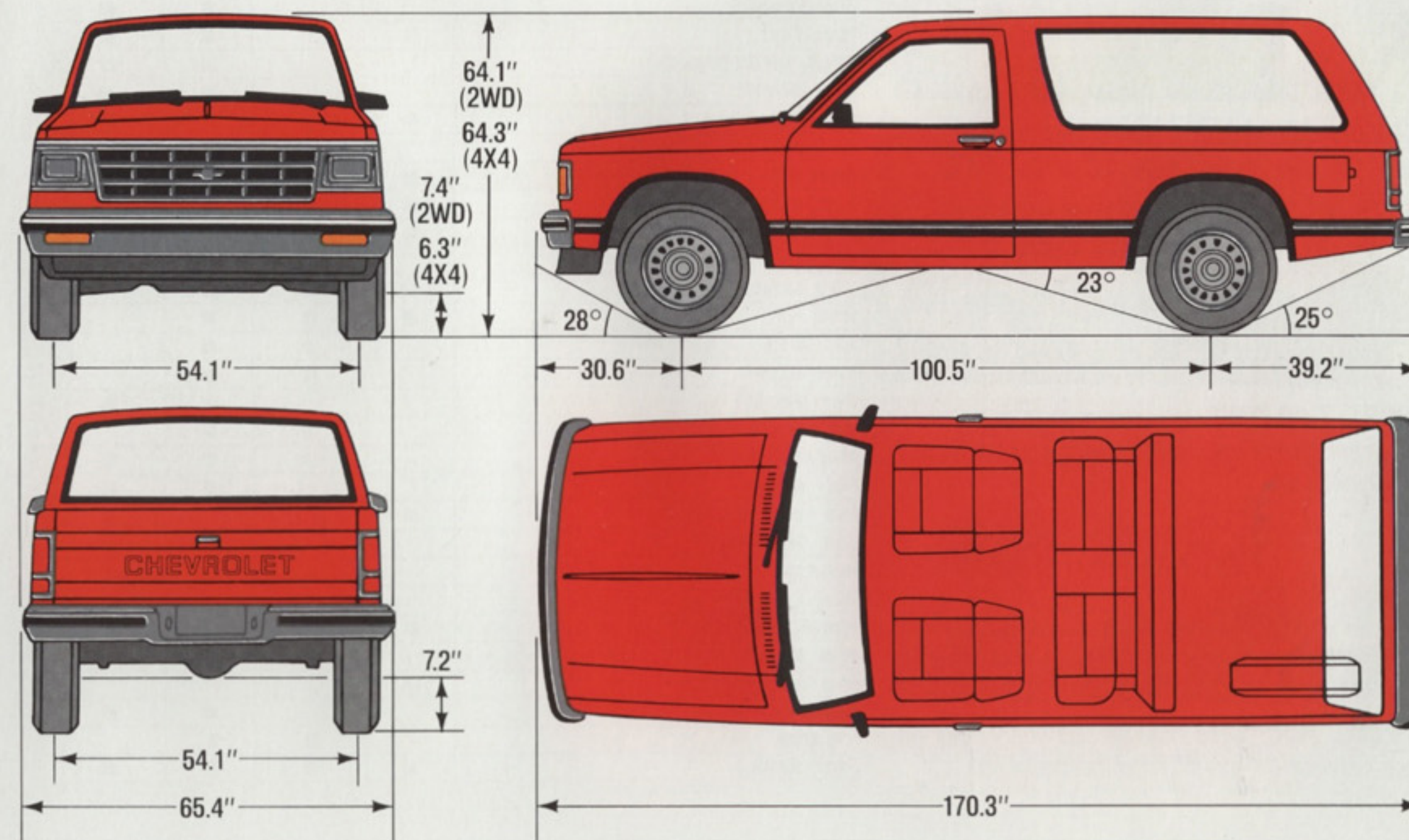
OFF-ROAD CHASSIS PACKAGE

Available on 4x4 S-10 Blazer only. This competition-proved package includes Delco/Bilstein gas high-pressure shocks, special torsion bars, front stabilizer bar, transfer case stone shield and P235/75R-15 radial tires with full-size spare.

SPECIFICATIONS

	2WD	4x4
Payload (lb.)	1000	1000
GVWR Range (lb.)	3870-4638	4156-4954
Engine—Liter (cu. in.)	Std. 2.5 (151) Tech IV w/EFI	2.8 (173) V6 w/EFI
	Opt. 2.8 (173) V6 w/EFI	4.3 (262) V6 w/EFI*
	Opt. 4.3 (262) V6 w/EFI*	—
Front Suspension	Type Independent/Coil Springs	Independent Driving Torsion Bar
	Capacity 2200	2400
Rear Suspension	Axle Type Semi-floating	Semi-floating
	Capacity 2600	2700
Brakes—Disc/Drum	Std. Power	Power
Steering—Type	Std. Manual	Power
	Opt. Power	—
Transmission	Std. 5-Speed Manual/OD	5-Speed Manual/OD†
	Opt. 4-Speed Automatic/OD	4-Speed Automatic/OD
Transfer Case	—	2-Speed
Tubeless Tires	Std. P195/75R-15	P195/75R-15
	Opt. Larger Size Tubeless Tires	Larger Size Tubeless Tires**

*Will become available April 1988. †Not available with 4.3 (262) V6 w/EFI. **Including P235/75R-15 on- and off-road tires: Tires chains should not be used on S-10 Blazers equipped with P235/75R-15 tires because they could cause damage to this vehicle.



Frost White

Silver Metallic*

Midnight Black

Aspen Blue Metallic

Galaxy Blue Metallic

Wheat

Yukon Gold Metallic

Woodlands Brown Metallic

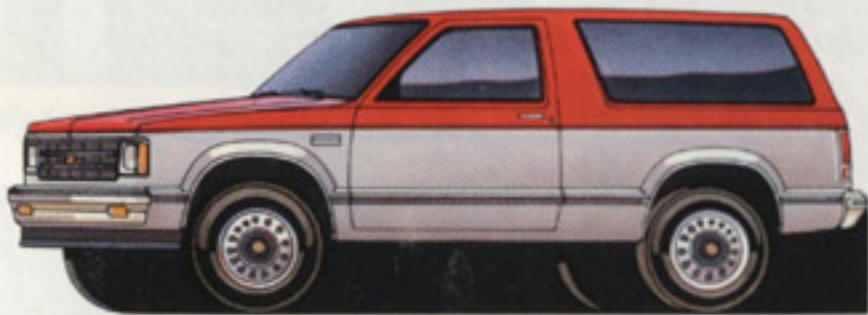
Emerald Metallic

Apple Red

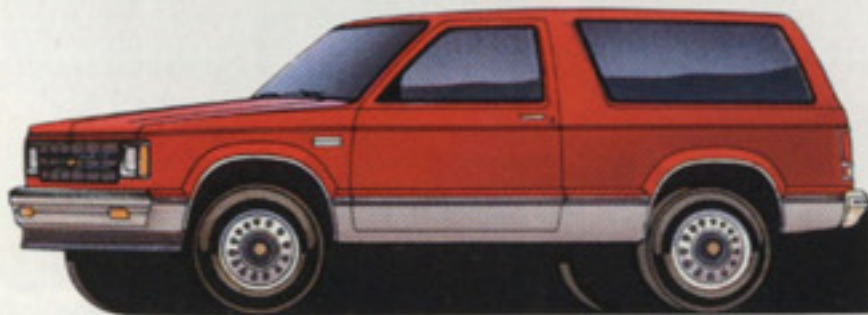
Steel Gray Metallic

*Secondary color only.

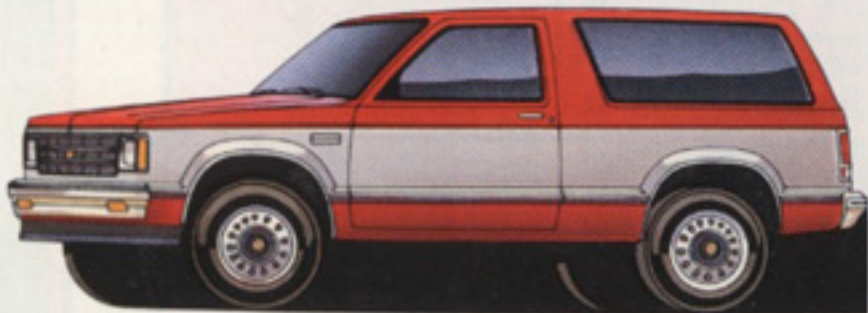
S-10 BLAZER PAINT OPTIONS
(Solid color is standard on all models.)



CUSTOM TWO-TONE includes decal striping with secondary color applied below the beltline.



SPORT TWO-TONE includes a four-stripe decal below the crease line, with secondary color applied below the decal.



SPECIAL TWO-TONE includes secondary color on areas between the molding and the crease line.

INTERIOR AND EXTERIOR COLOR AVAILABILITY CHART				
TRIM LEVEL	INTERIOR COLORS			
	Blue	Carmine	Charcoal	Saddle
Seat Type				
STANDARD INTERIOR				
Custom Vinyl High-Back Bucket Seats	■	■	■	■
TAHOE				
Custom Vinyl High-Back Bucket Seats	■	■	■	■
Special Custom Cloth High-Back Bucket Seats	■	■	■	■
Leather High-Back Reclining Bucket Seats			■	■
SPORT				
Deluxe Cloth High-Back Bucket Seats			■	■
Leather High-Back Reclining Bucket Seats			■	■
EXTERIOR COLORS	RECOMMENDED INTERIOR TRIM COLORS			
Solid and Two-Tone Combinations				
BLACK, MIDNIGHT		■	■	■
Gold, Yukon (Metallic)				■
Red, Apple		■	■	
Silver (Metallic)		■	■	
White, Frost		■	■	
BLUE, GALAXY (Metallic)	■		■	■
Gold, Yukon (Metallic)	■			■
Silver (Metallic)	■		■	
White, Frost	■			
BLUE, ASPEN (Metallic)	■		■	
Black, Midnight	■		■	
Blue, Galaxy (Metallic)	■		■	
Silver (Metallic)	■			
White, Frost	■			
BROWN, WOODLANDS (Metallic)			■	■
Black, Midnight			■	■
Gold, Yukon (Metallic)				■
Silver (Metallic)			■	■
White, Frost			■	■
EMERALD (Metallic)			■	■
Black, Midnight			■	■
Gold, Yukon (Metallic)				■
Silver (Metallic)			■	■
White, Frost			■	■
GOLD, YUKON (Metallic)			■	■
Black, Midnight			■	■
Blue, Galaxy (Metallic)	■			■
White, Frost				■
GRAY, STEEL (Metallic)	■	■	■	
Black, Midnight	■	■	■	
Blue, Galaxy (Metallic)	■		■	
Red, Apple		■	■	
Silver (Metallic)	■	■	■	
White, Frost	■	■	■	
RED, APPLE		■	■	
Black, Midnight		■	■	
Silver (Metallic)			■	■
White, Frost		■	■	
WHEAT			■	■
Black, Midnight			■	■
Blue, Galaxy (Metallic)	■			■
Gold, Yukon (Metallic)			■	■
Red, Apple		■		■
White, Frost				■
WHITE, FROST	■	■	■	■
Black, Midnight		■	■	
Blue, Galaxy (Metallic)	■			
Gold, Yukon (Metallic)			■	■
Red, Apple		■	■	
Silver (Metallic)	■	■	■	■

IMPORTANT: A WORD ABOUT THIS CATALOG. We have tried to make this catalog as comprehensive and factual as possible. However, since the time of printing, some of the information you will find here may have been updated. Also, some of the equipment shown or described throughout this catalog is available as factory-installed options, dealer accessories and specialized equipment from various independent suppliers at extra cost. Your dealer has details and, before ordering, you should ask him to bring you up to date. The right is reserved to make changes at any time, without notice, in prices, colors, materials, equipment, specifications and models. Check with your Chevrolet dealer for complete information.

A WORD ABOUT ASSEMBLY, COMPONENTS AND OPTIONAL EQUIPMENT IN THESE CHEVROLET PRODUCTS. The Chevy Blazers described in this catalog (Series S-10 2WD and 4WD) are assembled at facilities operated by General Motors or GM of Canada. These vehicles incorporate thousands of different components produced by car and truck groups and various component divisions of GM and by various suppliers worldwide to General Motors. From time to time during the manufacturing process, it may be necessary, in order to meet public demand for particular vehicles or equipment, or to meet federally mandated emissions, safety or fuel economy requirements, or for other reasons, to produce Chevrolet products with different components or differently sourced components than initially

scheduled. All such components have been approved for use in Chevrolet products and will provide the quality performance associated with the Chevrolet name.

With respect to factory-installed extra-cost optional equipment, make certain you specify the type of equipment you desire on your vehicle when ordering it from your dealer. Some options may be unavailable when your truck is built. Your dealer receives advice regarding current availability of options. You may ask your dealer for this information. GM also requests the dealer to advise you if an option you ordered is unavailable. We suggest that you verify that your vehicle includes the optional equipment you ordered or, if there are changes, that they are acceptable to you.

These vehicles are also available under the GMC nameplate Jimmy Series S-15: 2WD and 4WD.

A WORD ABOUT ENGINES. Chevrolets are equipped with engines produced by GM or suppliers to GM worldwide.

AS PROVIDED BY THE 1988 CHEVROLET NEW-VEHICLE LIMITED WARRANTY, your Chevy truck outer body has 6-year/100,000-mile perforation-from-corrosion coverage. See your Chevy dealer for terms and conditions.

GM PROTECTION PLAN. The GM Protection Plan offers service protection in addition to that provided by GM's new-vehicle limited warranty. Ask your dealer about it. Coverage available only in the U.S. and Canada.

FOR INFORMATION ON ANY NEW CHEVY TRUCK. See your Chevy dealer for a complete selection of 1988 truck catalogs. They include ■ S-10 Pickup ■ Full-Size Pickup ■ S-10 Blazer ■ Full-Size Blazer ■ Astro/Sportvan ■ Chevy Van/Astro Van ■ Suburban ■ Special Vehicles and ■ Chevy Recreation and Trailing Guide.

A WORD ABOUT UPDATED SERVICE INFORMATION. Chevrolet regularly sends its dealers useful service bulletins about Chevrolet products. Chevrolet monitors product performance in the field. We then prepare bulletins for servicing our products better. Now you can get these bulletins, too. Ask your dealer. To get ordering information, call toll-free 1-800-551-4123.

MORE DEALERS TO SERVE YOU. With nearly 5,000 servicing dealers nationwide, Chevrolet offers a more extensive parts/service network than any other truck company.

GMAC FINANCING. At your Chevrolet dealer's, financing or leasing your new S-10 Blazer can be as easy as saying GMAC.

LET'S GET IT TOGETHER... BUCKLE UP.

THE
Heartbeat
OF
AMERICA.
TODAY'S CHEVY TRUCK 