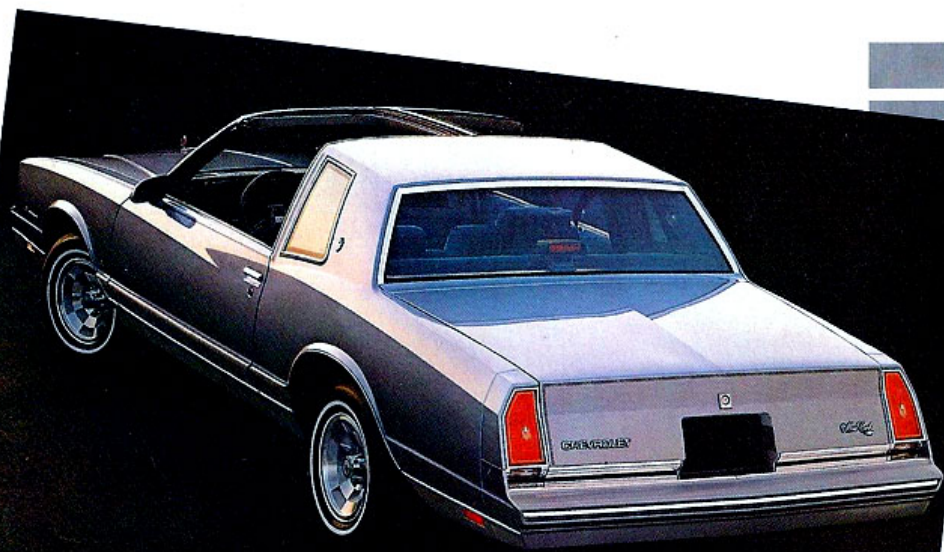


CAPRICE/MONTE CARLO



Carefully sculptured lines

elicit admiring glances

whether Monte Carlo is

cruising through a day

on the road, or a night

on the town.

Classic in style and

fluid in motion...

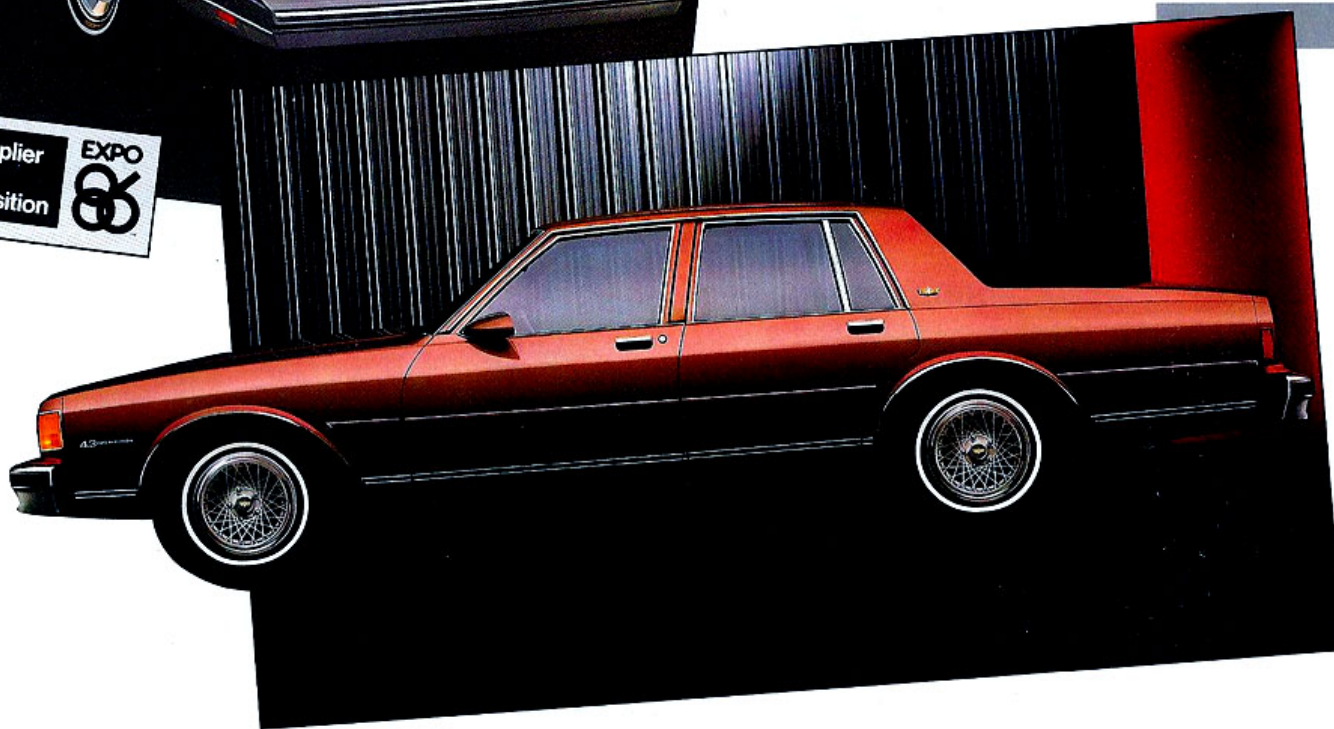
Caprice offers a unique

combination of all the

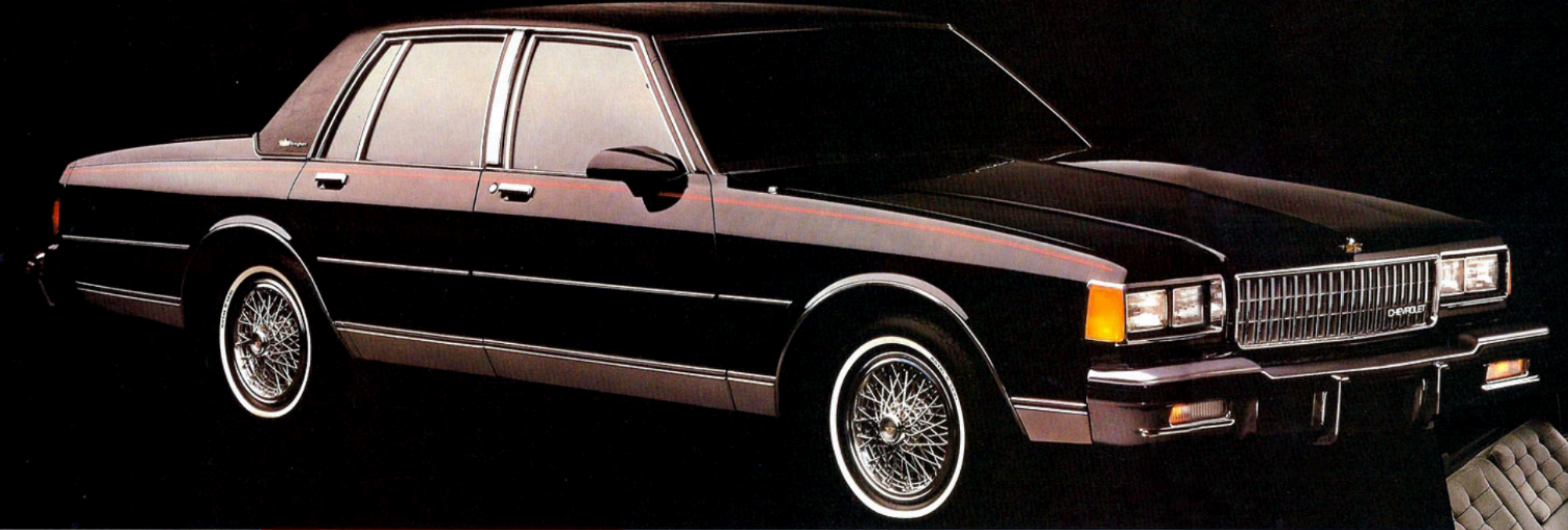
virtues you've come

to expect in a full-size

Chevrolet.



C H E V R O L E T 1 9 8 6



■ Front Cover:
Monte Carlo Sport Coupe
and Caprice Classic
4-Door Sedan

Caprice. A World of Choice

Caprice Classic Brougham.

All new for 1986, Brougham sets a beautiful standard of affordable excellence. A full vinyl roof, centre pillar applique of bright brushed metal, and an identifying nameplate enhance the exterior. On the inside, "pillow-design" full-foam cushioned seating cradles driver and passengers alike, with 55/45 split front seat with pull-down centre armrest.

Caprice Classic.

Caprice Classic's celebrated ride is improved for 1986, with shock absorber refinements to smooth out rough road surfaces. More effective sound deadening materials provide the luxury of quiet, while the available 5.0 Litre V8 provides the luxury of spirited performance.

Caprice.

The value leader. A new 4.3 Litre V6 with Electronic Fuel Injection, 4-speed automatic transmission, power steering and brakes, rugged full-frame construction and Full Coil suspension are all standard. The trunk holds 592 litres (20.9 cubic feet) of cargo. The interior carries six in comfort. All of which makes Caprice tough to beat.

Caprice Classic Wagon

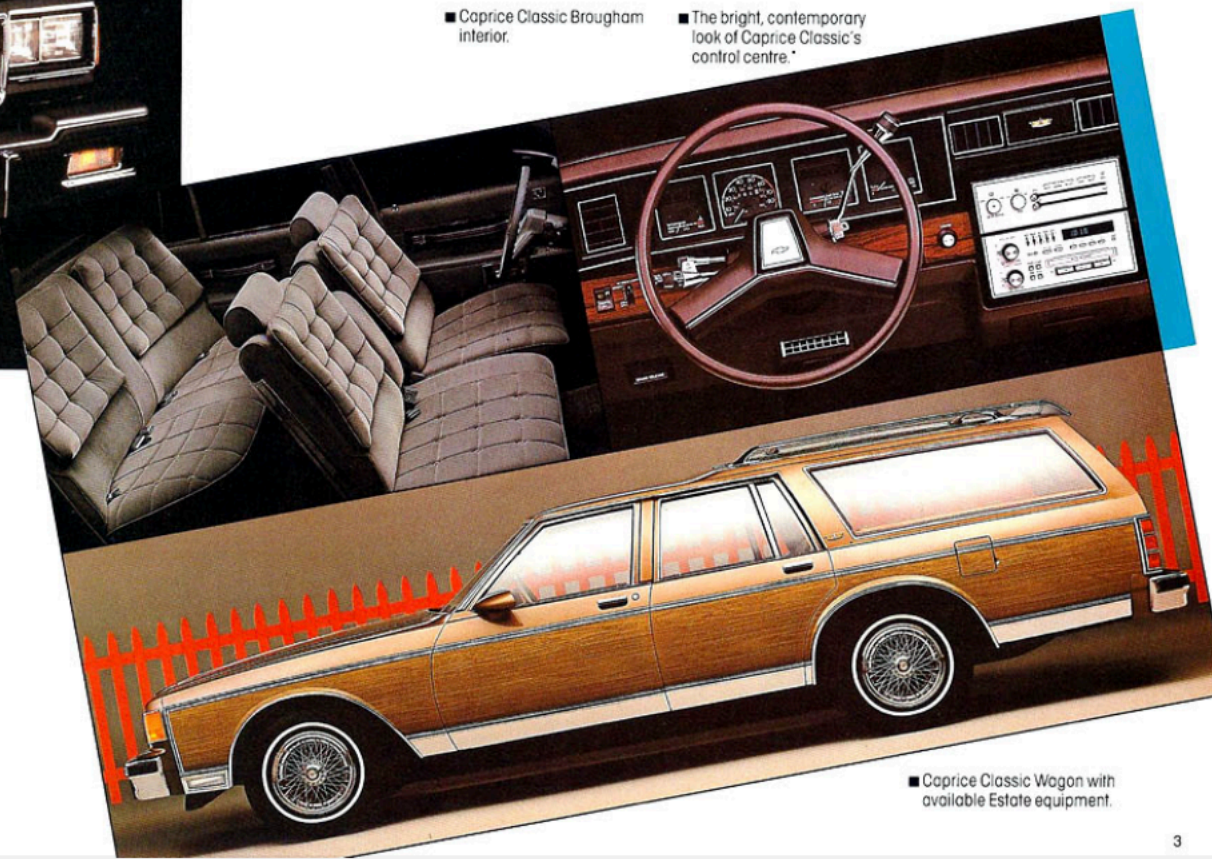
Everything you'd want in a car, in a plush three-seater with room for eight. Or room for up to 2488 litres (87.9 cubic feet) of whatever you desire, with the back seats folded down. A standard 5.0 Litre V8 teams with a 4-speed automatic transmission to give lively performance. And on the inside, the appointments live up to the Caprice Classic nameplate.

■ Caprice Classic Brougham
4-door Sedan

* Note: Speedometers in Canada have major scale in km/h. Secondary in MPH and odometer in kilometres. Gauges are also metric.

■ Caprice Classic Brougham interior.

■ The bright, contemporary look of Caprice Classic's control centre.*



■ Caprice Classic Wagon with available Estate equipment.

Monte Carlo Luxury Sport Coupe.

Personal Excitement in the Classic Style.

Discerning drivers will quickly recognize the contemporary flair and timeless elegance of the 1986 Monte Carlo Luxury Sport Coupe. Up front, newly sculptured metal and a beautiful new headlamp design combine aerodynamics with classic style. New wide lower body side mouldings

and a refined rear treatment add to the visual excitement. Inside, Monte Carlo LS surrounds you with spacious, quiet comfort. Deeply-padded seating creates an atmosphere of luxury. The available CL interior features a contoured 55/45 front seat for individualized comfort. Thick, sound-absorbing insulation and computer-selected Full Coil suspension ensure a

smooth, quiet ride.

And by choosing from the extensive available equipment, you can personalize the car to your precise taste. In its every move, Monte Carlo LS* is the definition of contemporary personal luxury.

* Monte Carlo LS not available at start of production. See your dealer for details.

■ Monte Carlo LS Coupe.

Monte Carlo SS.

Super Sport Excitement in the Monte Carlo Style.

Performance enthusiasts, Chevy's still speaking your language. This is Monte Carlo SS, and anything closer to a racer has numbers on the side.

The SS practically demands spirited driving. Behind its distinctive sloping nose is a 5.0 Litre High Output version of the legendary Chevrolet small-block V8. A 4-speed automatic overdrive transmission puts the power on the pavement through wide, white-lettered Eagle GT radials.

But power's not the only thing that sets the SS apart. Try out the decisive handling of the F41 suspension. Firm nitrogen-pressured shock absorbers are standard equipment. Corners don't just yield. They surrender unconditionally. And Monte Carlo's luxurious interior carries you through them in style.

If you respond to the fiery feel of a serious road machine, you'll like the way Monte Carlo SS responds to you.

Monte Carlo Sport Coupe.

Timeless Style.

With its traditional Monte Carlo styling combined with the interior luxury of LS, Monte Carlo Sport Coupe's beauty is clear.

And this is functional beauty, with engineering to match the elegant appearance. The energy comes from a standard 3.8 Litre V6 engine. The standard 3-speed automatic transmission, power steering and power front disc/rear drum brakes deliver confident, precise response.

■ Monte Carlo SS.

■ Monte Carlo Sport Coupe.



■ Available CL interior.



Caprice Features and Options

You'll find a wide range of features and options to add to your driving pleasure.

Appearance and Protection

■ Body pin striping (not available on Custom Two-Tone paint, Estate equipment or Landau equipment package) ■ Bumper guards front and rear ■ Bumper rub strips (Std. on Caprice Classic Sedan, Brougham and Coupe) ■ Cornering lamps ■ Deluxe luggage compartment trim (sedans and coupes) ■ Estate equipment (wagon) ■ Floor covering: Carpeting Deluxe rear compartment decor (wagon); Colour-keyed

carpet mats, front and/or rear ■ Halogen headlamps, high and low beam ■ Landau equipment package includes Landau-style vinyl roof cover, bright mouldings on roof, belt and front fenders, Sport mirrors and Landau emblems (coupe only) ■ Mirrors: Left-hand remote control; Left-hand and right-hand remote control; Left-hand remote and right-hand manual ■ Mouldings: Body side; Door edge guard (not available with Estate equipment); Wheel opening (Std. on Caprice Classic) ■ Paint: Custom Two-Tone ■ Vinyl roof covers (Landau - coupe; full cover - sedan).

Comfort and Convenience

■ Air conditioning ■ Air deflector (wagon - requires roof luggage carrier) ■ Auxiliary lighting ■ Comfortilt steering wheel ■ Electric rear window defroster (Std. on all models) ■ Electronic speed control with resume and speed adjustment feature ■ Engine block heater ■ Gauge package with trip odometer ■ Illuminated RH visor vanity mirror ■ Power door locks ■ Power tailgate lock ■ Power trunk opener ■ Power windows ■ Quartz electric clock (Std. on Caprice Classic; not available with ETR stereo radios) ■ Quiet Sound Group (Std. on Caprice Classic) ■ Roof carrier (wagon) (includes adjustable front and rear rails) ■ Seats: 50/50 split bench (Caprice Classic); Front-passenger backrest

recliner with 50/50 seat (Caprice Classic); Six-way power seat (driver's or passenger side with 50/50 seat) ■ Tinted glass.

Performance

■ Heavy-duty battery ■ Heavy-duty cooling ■ Limited slip differential ■ Performance axle ratio ■ Suspension equipment: inflatable rear shock absorbers (wagon only); Heavy-duty front and rear suspension (sedans and coupe, Std. on wagon); F41 Sport Suspension (sedans and coupe).

Audio Equipment

(All radios feature a fixed-mast antenna; all stereos include four speakers.)

■ AM radio (Std. on all models) ■ Electronically tuned AM/FM stereo radio w/seek and scan ■ Electronically tuned AM/FM stereo radio w/seek and scan and clock ■ Electronically tuned AM/FM stereo radio w/seek and scan, stereo cassette tape and clock ■ Electronically tuned AM/FM stereo radio w/seek and scan, cassette tape, clock, graphic equalizer and Extended Range Sound (ERS™) system ■ Premium extended range dual rear speakers (NA with monaural radio) ■ Power antenna.

Tires

■ P205/75R-15 all-seasons steel-belted radial ply blackwall (Std. on all models) ■ P205/75R-15 all-seasons steel-belted radial ply white stripe (sedans and coupe) ■ P225/70R-15 all-seasons steel-belted radial ply white stripe (sedans and coupe; required with F41 Sport Suspension) ■ P225/75R-15 all-seasons steel-belted radial ply white stripe (wagon) ■ Puncture-sealant tire (white stripe only).

Wheel Equipment

■ Full wheel covers (Std. on all models) ■ Sport wheel covers ■ Wire wheel covers with integral locks.

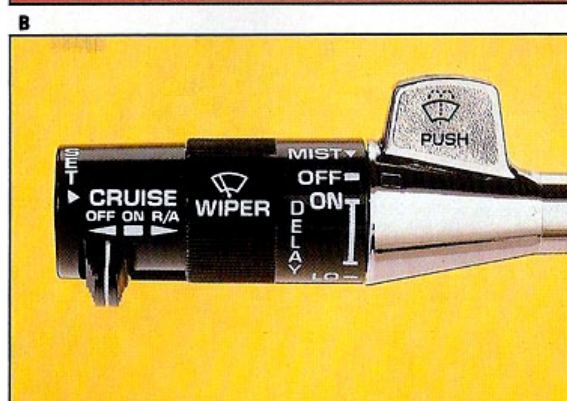
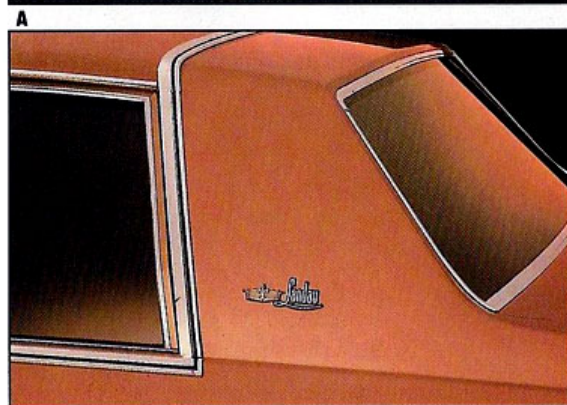
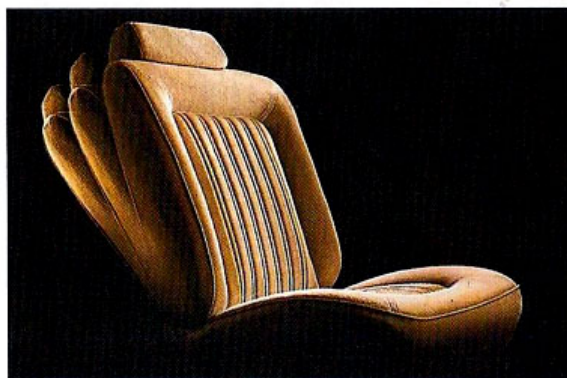
Power Teams

Engine	Opt. No.	Transmission Availability					
		Engine Availability			Automatic		
		Sedan/ Coupe	Station Wagon	Automatic (MX1) Sedan/ Coupe	Station Wagon	w/Overdrive (MXO) Sedan/ Coupe	Station Wagon
4.3 Litre EFI* V6 (A)	LB4	STD	NA	NA	NA	STD	NA
5.0 Litre 4-Bbl. V8 (B)	LG4	EC	STD	+	NA	STD	STD

STD - Standard NA - Not Available EC - Extra Cost *EFI - Electronic Fuel Injection + Interim Availability
(A) Produced by GM - Chevrolet Motor Division, U.S.A.
(B) Produced by GM - Chevrolet Motor Division, U.S.A. and GM of Canada.

See your Chevrolet salesperson for fuel consumption estimates for Caprice based on Transport Canada approved test methods.

Dimensions: mm (in.)	Coupe	Sedan	Wagon
Wheelbase	2945 (116.0)	2945 (116.0)	2945 (116.0)
Length (overall)	5405 (212.8)	5405 (212.8)	5464 (215.1)
Width (overall)	1914 (75.3)	1914 (75.3)	2014 (79.3)
Height (loaded)	1433 (56.4)	1433 (56.4)	1457 (58.1)
Head Room - Front	979 (38.5)	997 (39.2)	1005 (39.6)
Head Room - Rear	964 (38.0)	964 (38.0)	998 (39.3)
Leg Room - Front	1072 (42.2)	1072 (42.2)	1072 (42.2)
Leg Room - Rear	972 (38.3)	922 (39.1)	959 (37.8)
Cargo Volume: litres (cu. ft.)	592 (20.9)	592 (20.9)	2488 (87.9)
Fuel Tank Capacity: (litres/gals.)	95 (20.8)	95 (20.8)	95 (20.8)



Available: (A) Divided front passenger seat with six-way seat adjuster and passenger seat back recliner. (B) Caprice Classic Coupe with Landau roof. (C) Electronic speed control with resume and speed adjustment features.

Monte Carlo Features and Options

Monte Carlo's wide range of features and options lets you personalize your Monte Carlo just the way you want it.

Appearance and Protection

■ Body pin striping * ■ Colour-keyed floor mats, carpeted front and rear ■ Custom Two-Tone paint * ■ Halogen high- and low-beam headlamps ■ Mirrors: Sport, left-hand remote and right-hand manual (Std. on SS) ■ Mouldings*: Deluxe body side; Door edge guards; Side window sill ■ Padded Landau vinyl roof cover * ■ Tinted glass.

Power Teams

Engine	Opt. No.	Engine Availability	Transmission Availability	
			Automatic Transmission (MX1)	Automatic w/Overdrive* (MXO)
3.8 Litre 2-Bbl. V6 (A)	LD5	STD	STD	NA
5.0 Litre 4-Bbl. V8 (B)	LG4	EC	STD	EC
5.0 Litre 4-Bbl. V8 (H.O.) (C)	L69	STD*	NA	STD*

STD - Standard NA - Not Available EC - Extra Cost
 *Standard on SS only; not available for Monte Carlo Sport Coupe.
 (A) Produced by GM - Buick Motor Division, U.S.A.
 (B) Produced by GM - Chevrolet Motor Division, U.S.A. and GM of Canada.
 (C) Produced by GM - Chevrolet Motor Division, U.S.A.

See your Chevrolet salesperson for fuel consumption estimates for Monte Carlo based on Transport Canada approved test methods.

Dimensions: mm (in.)	Sport Coupe, LS and SS
Wheelbase	2745 (108.1)
Length (overall)	5090 (200.4)*
Width (overall)	1824 (71.8)
Height (loaded)	1382 (54.4) +
Head Room - Front	962 (37.9)
Head Room - Rear	967 (38.1)
Leg Room - Front	1086 (42.8)
Leg Room - Rear	928 (36.5)
Cargo Volume: litres (cu. ft.)	458 (16.2)
Fuel Tank Capacity: (litres/gals.)	66 (14.6)
*Monte Carlo SS: 5142 (202.4)	+ Monte Carlo SS: 1394 (54.9)

Comfort and Convenience

■ Air conditioning ■ Auxiliary lighting (includes underhood light, headlamp-on reminder) ■ Comfortilt steering wheel ■ Console (requires bucket seats) ■ Electric rear window defroster (Std. on all models) ■ Electronic speed control with resume and speed adjustment feature ■ Gauge package with oil pressure, voltmeter, temperature gauges and trip odometer (Std. on SS) ■ Intermittent windshield wiper system ■ Power door lock system ■ Power trunk opener

■ Power windows ■ Removable glass roof panels ■ Six-way power seat, driver's side (55/45 seat only) ■ Visor vanity mirror, (illuminated and non-illuminated).

Performance

■ Axles: Limited slip differential; Performance ratio ■ Engine block heater ■ Heavy-duty battery ■ Heavy-duty cooling * ■ F41 Sport Suspension (Std. on SS; requires P205/70R-14 tires) ■ Tachometer (requires gauge package; Std. on SS).

Audio Equipment

(All radios feature a fixed-mast antenna; all stereos include four speakers) ■ AM radio (Std. on all models)

■ AM radio and digital clock ■ Electronically tuned AM/FM stereo radio w/seek and scan ■ Electronically tuned AM/FM stereo radio w/seek and scan, stereo cassette tape and digital clock ■ Electronically tuned AM/FM stereo radio w/seek and scan and digital clock ■ Electronically tuned AM stereo/FM stereo radio w/seek and scan, stereo cassette tape with search and repeat, graphic equalizer, extended range rear speakers and digital clock ■ Premium dual rear radio speaker system ■ Power antenna.*

*Receives C-Quam® AM stereo broadcasts. C-Quam is a registered trademark of Motorola, Inc.

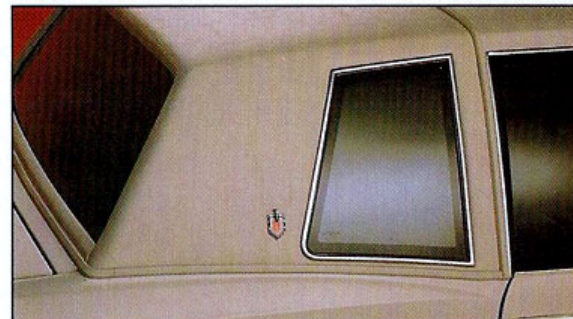
Tires

■ P195/75R-14 steel-belted radial ply blackwall, all-seasons* (Std. on Monte Carlo Sport Coupe) ■ P195/75R-14 steel-belted radial ply white stripe all-seasons* (not available on

F41 Sport Suspension) ■ P205/70R-14 steel-belted radial ply white stripe all-seasons* (required with F41 Sport Suspension) ■ P215/65R-15 steel-belted radial ply Eagle GT white lettered (Std. on SS).

Wheel Equipment

■ Full wheel covers (Std. on Monte Carlo) ■ Aluminum wheels (Std. on SS) ■ Rally Wheels* ■ Wire wheel covers with locking package.*
 *Not available on SS.



■ Available: (A) Landau roof cover. (B) Reclining front bucket seats. (C) Gauge package with tachometer (Std. on SS)*.

*Gauges are metric in Canada.

COMMITMENT TO Excellence

General Motors recognizes that taking delivery of your new vehicle is a significant event. To ensure that your delivery experience contributes to your overall satisfaction, we have implemented a "Commitment to Excellence" Delivery Procedure.

This procedure includes a thorough new vehicle inspection by both the service technician and salesperson, a full tank of fuel, and a follow-up survey to determine your satisfaction with the delivery experience.

General Motors "Commitment to Excellence" is yet another excellent reason to "Look at GM Today".

Facts

Model Availability

Caprice: 4-Door Sedan
 Caprice Classic: 2-Door Coupe, 4-Door Sedan, 4-Door 3-Seat Station Wagon
 Caprice Classic Brougham: 4-Door Sedan
 Monte Carlo: 2-Door Sport Coupe
 Monte Carlo LS: 2-Door Sport Coupe
 Monte Carlo SS: 2-Door Sport Coupe

Safety Features

Occupant Protection

■ Manual lap/shoulder belts for driver and right front passenger (driver's side includes visual and audible warning system)
 ■ Manual lap belts at each rear seat position and centre front position ■ Energy-absorbing steering column ■ Energy-absorbing instrument panel ■ Energy-absorbing front seat-back tops ■ Laminated safety windshield glass and tempered safety side and rear window glass ■ Safety interlocking door latches ■ Passenger-guard inside door lock handles ■ Inertia-locking, folding front seat-backs ■ Safety armrests ■ Head restraints, driver and right front passenger (adjustable).

Accident Avoidance

■ Side marker lights and reflectors ■ Parking lamps that illuminate with headlights ■ Four-way hazard warning flasher ■ Backup lights ■ Centre high-mounted stop lamp ■ Directional signal control with lane-change feature ■ Windshield defroster, washer and dual-speed wipers ■ Inside rearview mirror with vinyl-bonded glass ■ Outside left rearview mirror (right also on Monte Carlo) ■ Brake system with dual master cylinder and warning light ■ Starter safety

switch ■ Dual-action hood-latch system ■ Low-glare finish on instrument panel top, inside windshield mouldings, wiper arms/blades, metallic steering wheel surfaces ■ Illuminated heater and defroster controls ■ Tires with built-in tread-wear indicators.

Theft Deterrence

■ Audible reminder for ignition key removal ■ Anti-theft steering column lock ■ Visible vehicle identification number.

For Your Protection*

1. New Vehicle Limited Warranty—12 months or 20,000 kilometres, whichever comes first.
2. Powertrain Coverage—36 months or 60,000 kilometres, whichever comes first on gasoline engines (\$100 deductible).
3. Owner Assistance Program.
4. Special Policy Adjustment Program.

*Ask your dealer for details.



5-year unlimited kilometres corrosion perforation warranty. On all 1986 GM passenger cars. Ask your dealer for details.



While there are many service contracts available on the market today, there is only one which gives you an agreement directly with General Motors. It is the one with the GM Protection Plan logo shown above. This logo on all Plan material

assures you that the service contract you are buying is the GM Plan, we believe the finest such program available to GM owners.

The GM Protection Plan provides additional protection during and after the new vehicle limited warranties. Ask your General Motors dealer for details and information about the genuine GM Protection Plan.

Exterior Features

	Caprice		Monte Carlo		
	Caprice Sedan/Coupe	Classic Wagon	Caprice Sedan	Sport Coupe and LS	SS
Black door handles, locks, roof drip, window and belt reveal mouldings	NA	NA	NA	NA	S
Black grille and headlamp bezels with soft front fascia	NA	NA	NA	NA	S
Bright grille and headlamp bezels	S	S	S	S	NA
Bright lower body side, roof drip and window reveal mouldings	S	S	S	S	NA
Concealed dual-speed electric windshield wipers	S	S	S	S	S
Corrosion Protection:					
• Anti-chip protective coating on lower body	S	S	S	S*	S
• Seven-stage zinc phosphate anti-corrosion process	S	S	S	S	S
• Hot-melt-wax submersion of entire frame	S	S	S	S	S
• Liberal use of precoated steels and zinc-rich primers	S	S	S	S	S
Body-colour aero styled LH mirror	S	S	S	NA	NA
Black outside rearview mirrors	NA	NA	NA	S	NA
Dual Body-colour mirrors, LH remote and RH manual	EC	EC	EC	NA	S
Full wheel covers	S	S	S	S	NA
Aluminum Wheels	NA	NA	NA	EC	S
Protective chrome rocker and lower door mouldings	NA	NA	NA	S	NA
Wheel opening mouldings (rocker panel mouldings on Caprice)	S	S	S	S	NA

Interior Features

AM pushbutton radio with dual front speakers	S	S	S	S	S
Black steering wheel, column, trim plate and control levers	NA	NA	NA	NA	S
Colour-keyed safety belts, carpeting and instrument panel	S	S	S	S	S
Colour-keyed steering wheel and column	S	S	S	S	NA
Gauge package	EC	EC	EC	EC	S
Glove compartment lock	S	S	S	S	S
Luggage compartment mat	S	S	S	S	S
Multi-function dimmer/turn signal/washer lever	S	S	S	S	S
Six-passenger seating with front bench seat	S	S	S	S	S
Full-width front bench with centre armrest	S	S	S	S	S
Quartz electric clock	S	S	EC	+	+

Mechanical Features

Disc brake audible wear sensors	S	S	S	S	S
Dual exhaust system	NA	NA	NA	NA	S
F41 Sport Suspension	EC	EC	EC	EC	S
Front stabilizer bar	S	S	S	S	S
Full Coil suspension system	S	S	S	S	S
Full-perimeter frame	S	S	S	S	S
High Energy Ignition system	S	S	S	S	S
Power front disc/rear drum brake system	S	S	S	S	S
Power steering	S	S	S	S	S

S-Standard EC-Optional at Extra Cost NA-Not Available + -Radio must be ordered *LS only

A Word About This Catalogue

The vehicles described in this catalogue incorporate components produced by General Motors of Canada Limited and related companies and suppliers. During manufacturing, different components than initially scheduled may be used.

All illustrations and specifications contained in this catalogue are based on the latest product information at time of publication approval. The right is reserved to make changes at any time, without notice, in prices, colours, materials, equipment, specifications and models, and to discontinue models. Some of the equipment shown or described throughout this catalogue is available at extra cost or can only be ordered in conjunction with the other optional equipment. Some options may not be available when your vehicle is built. Check with your dealer for complete information.

Way to Go Chevy!

Chevrolet

General Motors of Canada Limited

Oshawa, Ontario

Printed in Canada

September 1985

