

C H E V Y T R U C K S 1 9 8 5

SUBURBAN

FREDERIC AUTO COMPANY
Chevrolet-Oldsmobile
Ph. 327-4217 Frederic, Wis. 54837



SUBURBAN.

POWER TO TOW, ROOM TO GO.

What makes Suburban America's most versatile truck-wagon? Plush interior comfort, expansive flexible

room, responsive V8 power and impressive towing capacity*. All available in your choice of 1/2- or 3/4-ton models, with 2- or 4-wheel drive.

What makes Suburban Chevy tough? Its rugged truck frame—the same type

frame that undergirds Chevy's robust full-size pickups. Suburban also boasts double-wall construction in doors and front fenders, a computer-matched braking system, high-capacity front and rear axles and many of the other

husky components that make Chevy trucks solid performers year after year.

In the gutsy available 4x4 model, Suburban really shows its grit. When you order the available automatic hub/synchronous transfer

case system, this eager back-roader allows nonstop shifting at speeds up to 25 MPH from 2WD to 4WD High. Standard 4WD equipment features no-nonsense manual hubs and nonsynchronized transfer case. Whichever arrange-

ment you choose, Suburban's 4x4 mobility is a real advantage, whether you're rim-deep in up-country mud or facing down a stretch of urban snow.

Versatile convenience—that's what Suburban is all about. Conveying you in

spacious room with carlike comfort when your travel plans demand the adaptability and toughness of a Chevy truck.

*See Trailering Chart, page 8 for details.



K20 Suburban Scottsdale Special Two-Tone in Light Blue and Silver.

Shown on cover: C10 Suburban Silverado with Exterior Decor Package in Indian Bronze Metallic and Doeskin Tan.

C10 Suburban Silverado with Exterior Decor Package in Apple Red and Doeskin Tan.



INSIDE SUBURBAN.

SPACIOUS LUXURY.

When you enter the world of Suburban, you step up to space that seems to sweep on forever, filled with appointments that enfold you in style.

Suburban makes three trim levels available: Silverado, with such amenities as door-to-door carpeting and your choice of luxurious velour or grained vinyl, is top-of-the-line-elegant. Family-room-comfortable Scottsdale pro-

vides color-keyed floor mats, cowl and headliner insulation as well as other interior and exterior items. Standard Custom Deluxe builds a basic level of comfort into your truck. New and standard on all Suburbans this year are

fluidic arm window washer/wipers and an attractive new front-end treatment and grille. No matter which trim level you choose, Suburban loads up more people or cargo than any car-type wagon. You'll find rear access

to Suburban especially convenient, through your choice of standard panel doors or an optional wagon-type tailgate. Inside, when both the available second and third seats are added to Suburban, up to nine passengers can ride

comfortably. And you still have nearly 40 big cu. ft. of cargo space in back. Remove the third seat and fold the second flat and you'll open up more than 165 cu. ft. of cargo room, capable of hauling payloads, when Suburban is

properly equipped, of up to 3,911 lbs. That's capacity to handle almost anything you want to carry around.



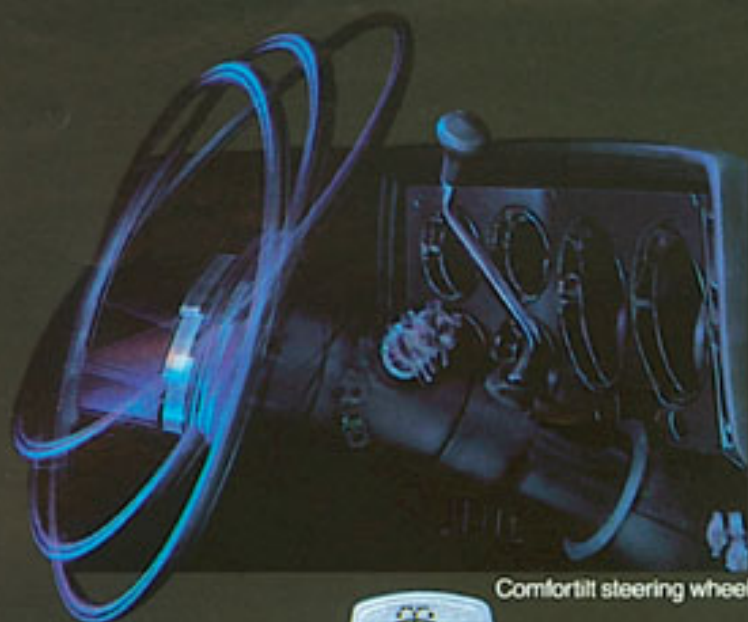
Scottsdale trim in Saddle Tan Custom Cloth.



Versatile Suburban offers passenger accommodations ranging from three to nine; cargo capacities range from 39.5 to over 165 cu. ft.

Silverado trim in Saddle Tan Custom Cloth with optional front buckets, second and third seats.

FACTS AND OPTIONS.



Comfortilt steering wheel



Camper mirror



Cast aluminum wheels



Electronic speed control
and intermittent wiper shown
on standard multi-function switch.



Below Eyeline mirror



Wheel covers



GM-Delco AM/FM stereo radio with cassette deck



Power door locks
Power windows



Rally Wheels

Luggage rack
(dealer-installed)
Wind deflector
(dealer-installed)
Deep-tinted glass
Rear window defogger
Power rear window



INTERIOR AND EXTERIOR COLOR AVAILABILITY CHART

Interior Colors by Trim Levels

		Blue	Burgundy	Saddle Tan	Slate Gray
Custom Deluxe	Vinyl Bench Seat				
Scottsdale	Vinyl Bench Seat				
	Custom Vinyl Bench Seat				
	Custom Cloth Bench Seat				
Silverado	Custom Vinyl Bench Seat				
	Custom Cloth Bench Seat				
	Custom Vinyl Reclining Bucket				
	Custom Cloth Reclining Bucket				

Exterior Colors

Solid and Two-Tone Combinations	Primary	Secondary	Recommended Interior Trim Color
Black, Midnight			
Silver (Metallic)			
Tan, Doerskin			
White, Frost			
Blue, Light (Metallic)			
Blue, Midnight			
Silver (Metallic)			
White, Frost			
Blue, Midnight			
Blue, Light (Metallic)			
Silver (Metallic)			
White, Frost			
Bronze, Indian (Metallic)			
Tan, Doerskin			
White, Frost			
Red, Apple			
Silver (Metallic)			
Tan, Doerskin			
White, Frost			
Sand, Desert (Metallic)			
Black, Midnight			
Tan, Doerskin			
White, Frost			
Silver (Metallic)			
Black, Midnight			
Blue, Light (Metallic)			
Blue, Midnight			
Red, Apple			
White, Frost			
Tan, Doerskin			
Black, Midnight			
White, Frost			
White, Frost			
Black, Midnight			
Blue, Light (Metallic)			
Blue, Midnight			
Red, Apple			
Silver (Metallic)			
Tan, Doerskin			
Yellow, Colonial			
Black, Midnight			
Tan, Doerskin			
White, Frost			
Exterior Decor Package			
Black, Midnight, Red, Apple			
Black, Midnight, Silver (Metallic)			
Black, Midnight, Tan, Doerskin			
Black, Midnight, White, Frost			
Blue, Light (Metallic), Blue, Midnight			
Blue, Light (Metallic), Silver (Metallic)			
Blue, Light (Metallic), White, Frost			
Blue, Midnight, Blue, Light (Metallic)			
Blue, Midnight, Silver (Metallic)			
Bronze, Indian (Metallic), Tan, Doerskin			
Bronze, Indian (Metallic), White, Frost			
Red, Apple, Black, Midnight			
Red, Apple, Silver (Metallic)			
Red, Apple, Tan, Doerskin			
Red, Apple, White, Frost			
Silver (Metallic), Black, Midnight			
Silver (Metallic), Blue, Light (Metallic)			
Silver (Metallic), Blue, Midnight			
Silver (Metallic), Red, Apple			
Tan, Doerskin, Black, Midnight			
Tan, Doerskin, Red, Apple			
Yellow, Colonial, Tan, Doerskin			
Yellow, Colonial, White, Frost			

APPEARANCE AND CONVENIENCE OPTIONS

	C18	C28	K18	K28		C18	C28	K18	K28
AIR CONDITIONING, FRONT	0	0	0	0	AM FM STEREO RADIO	0	0	0	0
AIR CONDITIONING, FRONT & REAR	0	0	0	0	AM FM STEREO W CASSETTE TAPE	0	0	0	0
BRIGHT METAL WHEEL COVERS	0	0	0	0	H-SCAM HALOGEN HEADLAMPS	0	0	0	0
BUCKET SEATS	0	0	0	0	HEADLAMP WARNING BUZZER	0	0	0	0
BUMPERS					HEADLINER, FULL LENGTH, INTERIOR	0	0	0	0
CHROME FRONT BUMPER GUARDS	0	0	0	0	HEATER, REAR	0	0	0	0
DELUXE FRONT AND REAR	0	0	0	0	INTERMITTENT WINDSHIELD WIPERS	0	0	0	0
CIGARETTE LIGHTER	0	0	0	0	MIRRORS				
COLOR-KEYED FLOOR MATS	0	0	0	0	PAINTED BELOW EYELINE	0	0	0	0
COMFORTLY STEERING WHEEL	0	0	0	0	STAINLESS STEEL BELOW EYELINE	0	0	0	0
DELUXE FRONT APPEARANCE PACKAGE	0	0	0	0	STAINLESS STEEL CAMPER	0	0	0	0
ELECTRIC CLOCK W QUARTZ MOVEMENT	0	0	0	0	WELDINGS				
GLASS, DEEP-TINTED	0	0	0	0	BODY SIDE, BLACK	0	0	0	0
DELUXE MOLDING PACKAGE - BRIGHT	0	0	0	0	BODY SIDE, BRIGHT	0	0	0	0
DOOR EDGE GUARDS	0	0	0	0	ELS-ON MOLDING PACKAGE - BLACK	0	0	0	0
OPERATING CONVENIENCE PACKAGE					WINDSHIELD ANTENNA	0	0	0	0
POWER DOOR LOCKS	0	0	0	0	POOF WARMER LAMPS	0	0	0	0
POWER WINDOWS	0	0	0	0	SEAT, PASSENGER FOLDING CENTER	0	0	0	0
PRINT OPTIONS					SEAT, PASSENGER REAR & CENTER	0	0	0	0
SPECIAL TWO-TONE PAINT	0	0	0	0	"ALL-STATE" ELECTRIC WINDOW	0	0	0	0
EXTERIOR DECOR PACKAGE	0	0	0	0	"ALL-STATE" ELECTRIC WINDOW W DEFROSTER	0	0	0	0
GM DELUXE RADIOS & ACCESSORIES					WHEELS, ALUMINUM	0	0	0	0
AM RADIO	0	0	0	0	WHEELS, RALLY	0	0	0	0
AM FM RADIO	0	0	0	0	WHEELS, STYLED	0	0	0	0

PERFORMANCE AND HEAVY-DUTY EQUIPMENT OPTIONS

	C18	C28	K18	K28		C18	C28	K18	K28
AIR CLEANER, PRECLEANER	0	0	0	0	FUEL TANK, STONE SHIELD PLATE	0	0	0	0
AUXILIARY BATTERY*	0	0	0	0	GAGES				
COLD CLIMATE PACKAGE	0	0	0	0	VOLT. TEMP. AND OIL	0	0	0	0
COOLERS, ENGINE OIL	0	0	0	0	GENERATOR, 55-AMP*	0	0	0	0
TRANSMISSION OIL	0	0	0	0	HEAVY-DUTY BATTERY*	0	0	0	0
DEADWEIGHT TRAILER HITCH	0	0	0	0	HEAVY-DUTY FRONT & REAR SHOCKS	0	0	0	0
ELECTRONIC SPEED CONTROL	0	0	0	0	HEAVY-DUTY FRONT SPRINGS	0	0	0	0
W RESUME & ACCELERATE FEATURES	0	0	0	0	HEAVY-DUTY RADIATOR	0	0	0	0
FRONT QUAD SHOCKS	0	0	0	0	LOCKING REAR AXLE DIFFERENTIAL	0	0	0	0
FRONT STABILIZER BAR*	0	0	0	0	POWER STEERING*	0	0	0	0
FRONT STABILIZER, HEAVY-DUTY	0	0	0	0	TRAILER WIRING HARNESS, 7-WIRE	0	0	0	0
FRONT TOW HOOKS	0	0	0	0	TRAILERING SPECIAL EQUIPMENT	0	0	0	0
FUEL TANK, 21-GAL. (S) 32-GAL. (S)	0	0	0	0	WT. DISTRIBUTING HITCH PLATFORM	0	0	0	0
FUEL TANK, 40-GAL. (S) 41-GAL. (S)	0	0	0	0	0 - GAS	0	0	0	0
					0 - BOTH GAS & DIESEL	0	0	0	0

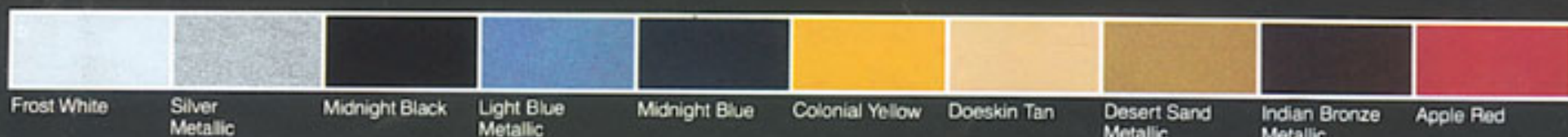
*Included with Diesel engine.

The GM Protection Plan.
An option that offers service protection in addition to that provided by GM's new-vehicle limited warranty. Available only in the U.S. and Canada for the 1985 model year. Ask your dealer about this option.

As part of the 1985 Chevrolet new-vehicle limited warranty, your Chevy truck includes three-year perforation-from-corrosion coverage. Exhaust system components not included. See your Chevy dealer for details and other limitations.

For information on any new Chevy truck. See your Chevy dealer for a complete selection of 1985 truck catalogs. They cover

- Chevy S-10 Blazer ■ full-size 4WD Blazer ■ Chevy S-10 Pickup
- full-size Chevy Pickup ■ El Camino ■ Sportvan ■ Chevy Van
- Step-Van ■ Astro Passenger Van
- Astro Cargo Van ■ all Medium-Duty Chevys and the ■ Chevy Recreation & Trailering Guide.



NOTHING WORKS LIKE A CHEVY TRUCK



Important: A word about this catalog. We have tried to make this catalog as comprehensive as possible and we hope you find it helpful. However, since the time of printing, some of the information you will find here may have been updated. Also, some of the equipment shown or described throughout this catalog is available as factory-installed options, dealer accessories, and specialized equipment from various independent suppliers at extra cost. Your dealer has details and, before ordering, you should ask him to bring you up to date. The right is reserved to make changes at any time, without notice, in prices, colors, materials, equipment, specifications and models. Check with your Chevrolet dealer for complete information.

A word about updated service information.

Chevrolet regularly sends its dealers useful service bulletins about Chevrolet products. Chevrolet monitors product performance in the field. We then prepare bulletins for servicing our products better. Now you can get these bulletins, too. Ask your dealer. To get ordering information, call toll-free 1-800-551-4123.

A word about assembly, components and optional equipment in these Chevrolet products. The Chevy Suburbans described in this catalog (Series C10, C20, K10 and K20) are assembled at facilities operated by General Motors or GM of Canada. These vehicles incorporate thousands of different components produced by car and truck groups and various component divisions of GM and by various suppliers to General Motors. From time to time during the manufacturing process, it may be necessary, in order to meet public demand for particular vehicles or equipment, or to meet federally mandated emissions, safety and fuel economy require-

1985 SUBURBAN SPECIFICATIONS—DIESEL

SERIES	C10 2-WHEEL DRIVE		C20 2-WHEEL DRIVE		K10 4-WHEEL DRIVE		K20 4-WHEEL DRIVE	
	7000		8000		7000-7300		8000	
GVW RANGE (LB.)	STANDARD		OPTIONAL		STANDARD		OPTIONAL	
AVAILABILITY	STANDARD		OPTIONAL		STANDARD		OPTIONAL	
ENGINE-LITER (CU. IN.)	5.2L (379)		6.2L (379)		6.2L (379)		6.2L (379)	
FRONT SUSPENSION	TYPE SPRING		INDEPENDENT-COIL SPRINGS		HYPOID DRIVING AXLE-LEAF SPRINGS		HYPOID DRIVING AXLE-LEAF SPRINGS	
REAR SUSPENSION	AXLE TYPE		SEMI-FLOATING		SEMI-FLOATING		SEMI-FLOATING	
BRAKES	DISC DRUM		POWER		POWER		POWER	
STEERING	TYPE		POWER		POWER		POWER	
TRANSMISSION	MANUAL		AUTOMATIC		4-SPD. AUTO. G.D.		4-SPD. AUTO. G.D.	
TRANSFER CASE—MANUAL LOCKING FRONT HUBS	—		—		—		—	
TIRE SIZE—TUBELESS	P235-75R-15		LT235-65R-16 (D/F) (R)		P235-75R-15		LT235-65R-16 (D/F) (R)	
TIRE LOAD RANGE—D (8 PR.) E (10 PR.)	—		—		—		—	

1985 SUBURBAN SPECIFICATIONS—GAS

SERIES	C10 2-WHEEL DRIVE		C20 2-WHEEL DRIVE		K10 4-WHEEL DRIVE		K20 4-WHEEL DRIVE	
	5100-5600		6000		5100-7000		6000	
GVW RANGE (LB.)	STANDARD		OPTIONAL		STANDARD		OPTIONAL	
AVAILABILITY	STANDARD		OPTIONAL		STANDARD		OPTIONAL	
ENGINE-LITER (CU. IN.)	5.0L (305) *		5.7L (350)		5.7L (350)		5.7L (350)	
FRONT SUSPENSION	TYPE SPRING		INDEPENDENT-COIL SPRINGS		HYPOID DRIVING AXLE-LEAF SPRINGS		HYPOID DRIVING AXLE-LEAF SPRINGS	
REAR SUSPENSION	AXLE TYPE		SEMI-FLOATING **		SEMI-FLOATING		SEMI-FLOATING	
BRAKES	DISC DRUM		POWER		POWER		POWER	
STEERING	TYPE		MANUAL		POWER		POWER	
TRANSMISSION	MANUAL		AUTOMATIC		4-SPD. AUTO. G.D.		4-SPD. AUTO. G.D.	
TRANSFER CASE—MANUAL LOCKING FRONT HUBS	—		—		—		—	
TIRE SIZE—TUBELESS	P235-75R-15		LT235-65R-16 (D/F) (R)		P235-75R-15		LT235-65R-16 (D/F) (R)	
TIRE LOAD RANGE—D (8 PR.) E (10 PR.)	—		—		—		—	

*NOT AVAILABLE IN CALIFORNIA. **FULL-FLOATING DESIGN INCLUDED WITH 7.4L 454 ENGINE. *ELECTRONIC SPARK CONTROL—HIGH COMPRESSION ENGINE. —LARGER SIZE TUBELESS TIRES AVAILABLE.

TRAILERING SPECIAL PACKAGE CONTENTS AND REQUIREMENTS

	GASOLINE ENGINE MODELS				DIESEL ENGINE MODELS			
	C10	K10	C20	K20	C10	K10	C20	K20
ENGINE	300-4 V8	300-4 V8	300-4 V8 (STD.)	454-4 V8	300-4 V8 (STD.)	6.2L V8	6.2L V8	6.2L V8
TRANSMISSION	*AUTOMATIC (STD.)	*AUTOMATIC	*AUTOMATIC	AUTOMATIC	*AUTOMATIC	*AUTOMATIC (STD.)	*AUTOMATIC	*AUTOMATIC
REAR AXLE RATIO (1)	3.42/3.73	3.42/3.73	3.73/4.10/4.56	3.71/3.73/4.10	3.73/4.10	3.42/3.73	3.42/3.73	4.10/4.56
EQUIPMENT INCLUDED:								
TRAILER HITCH PLATFORM	X	X	X	X	X	X	X	X
TRAILER WIRING HARNESS, 7-WIRE	X	X	X	X	X	X	X	X
ENGINE OIL COOLER	X	X	X	X	X	STANDARD	STANDARD	STANDARD
TRANSMISSION OIL COOLER	X	X	X	X	X	X	X	X
POWER STEERING	X	STANDARD	X	X	STANDARD	STANDARD	STANDARD	STANDARD
H.D. SHOCKS, FRONT AND REAR	X	—	STANDARD	STANDARD	STANDARD	—	STANDARD	STANDARD
H.D. GENERATOR, 60-AMP	X	X	X	X	X	STANDARD	STANDARD	STANDARD
GROSS COMBINED WEIGHT RATING (GCWR)	10,500/11,500	10,500/11,500	11,500/12,500/14,000	12,800/14,000/15,500	11,500/12,500	10,000/11,000	10,000/11,000	12,000/13,500
*4-SPEED AUTOMATIC WITH OVERDRIVE.								

1985 CHEVY SUBURBAN ENGINE LINEUP

	ENGINES WITH LT, MEDIUM-DUTY EMISSIONS FOR MODELS OF 8500-LB. GVWR AND BELOW FOR ALL STATES			ENGINES WITH HEAVY-DUTY EMISSIONS FOR MODELS OVER 8500-LB. GVWR FOR ALL STATES		
	5.0L (305) V8	5.7L (350) V8	6.2L V8 DIESEL	5.7L (350) V8	7.4L (454) V8	6.2L V8 DIESEL
DISPLACEMENT-LITER (CU. IN.)	5.0L (305)	5.7L (350)	6.2L (379)	5.7L (350)	7.4L (454)	6.2L (379)
ENGINE ORDERING CODE	LE9*	LE9	L96	L79	LE9	LL4
BORE & STROKE	3.74 X 3.48	4.0 X 3.5	3.98 X 3.80	4.0 X 3.5	4.3 X 4.0	3.98 X 3.80
COMPRESSION RATIO	9.2 TO 1	9.2 TO 1	21.3 TO 1	9.2 TO 1	9.2 TO 1	21.3 TO 1
SAE NET HORSEPOWER @ RPM	160 @ 4400	165 @ 3800	120 @ 3600	(A) 160 @ 3800 (B) 155 @ 4000	230 @ 3600	168 @ 3600
SAE NET TORQUE (LB.-FT.) @ RPM	235 @ 2000	273 @ 1600	240 @ 2000	(A) 250 @ 2000 (B) 240 @ 2300	360 @ 2000	240 @ 2000

*ELECTRONIC SPARK CONTROL. †NOT AVAILABLE IN CALIFORNIA. (A) FEDERAL RATINGS. (B) CALIFORNIA RATINGS. * PRODUCED IN U.S. OR CANADA.

ments, or for other reasons, to produce Chevrolet products with different components or differently sourced components than initially scheduled. All such components have been approved for use in Chevrolet products and will provide the quality performance associated with the Chevrolet name.

With respect to factory-

installed extra-cost optional equipment, make certain you specify the type of equipment you desire on your vehicle when ordering it from your dealer. Some options may be unavailable when your vehicle is built. Your dealer receives advice regarding current availability of options. You may ask your dealer for this information. GM also requests the dealer

to advise you if an option you ordered is unavailable. We suggest that you verify that your vehicle includes the optional equipment you ordered or, if there are changes, that they are acceptable to you.

These vehicles are also available under the GMC nameplate GMC Suburban Series C1500, C2500, K1500, K2500.

A word about engines.

Chevrolet trucks are equipped with engines produced at facilities operated by GM car and truck groups, subsidiaries or affiliated companies worldwide.

Let's get it together...buckle up.

Every new 1985 Suburban delivered by a Chevrolet dealer in the United States comes with a one-year, \$10,000 seat belt insurance certificate from MIC General Insurance Corporation at no additional charge. \$10,000 will be paid to the estate of any occupant who suffers fatal injuries as a result of an accident involving that vehicle while wearing a GM seat belt. Buckle up every time you drive.