

CITATION.

Chevrolet

The first Chevy of the '80s.

The first front-wheel drive with Chevy behind it.

The most thoroughly tested
new car in Chevy history. A car that measures
less than 15 feet bumper to bumper,
yet carries 5 adults in comfort. A car
that gives you the utility of a station wagon,
yet surprising acceleration and performance.
A car that is efficient in size and weight, yet has the
ride you might expect from a bigger car.

The 1980 Chevy Citation.

A whole new kind of compact car.



Chevy Citation

A whole new kind of compact car.



You'll find Citation a good car to be in when you're in heavy city traffic. There's rack-and-pinion steering to help you maneuver in and out, a Full Coil suspension system to help soak up bumps. You'll also appreciate the keen attention paid to *quietness* by the thoughtful engineering of the new Citation.



With standard 4-cyl. engine and transmission, Citation has an EPA estimated (24) mpg (city), 38 highway. California EPA estimated figures not available at time of printing. Check dealer for that information. **REMEMBER:** Compare this estimate to the estimated MPG of other cars. You may get different mileage depending on your speed, trip length and weather. Actual mileage will be lower in heavy city traffic. Actual highway mileage will probably be less than the estimated highway fuel economy. The Chevy Citation is equipped with GM-built engines produced by various divisions. See pages 20, 22 or your dealer for details.

Citation holds five adults, yet measures less than 15 feet bumper to bumper. Which means you'll also like the space it doesn't take up in your garage.



A compact car that puts 20.1 cu. ft. of luggage space securely out of sight with the rear hatchback closed.



Available on Chevy Citation:
Remote swing-out side windows open and close back there. Turn a handle up here.



And puts it right at your fingertips with the hatchback open.

A compact car with a station wagon inside. Remove the luggage compartment cover, fold down the rear seat, and you're looking at 41.1 cu. ft. of cargo room (30 bags of groceries) inside the 4-Door Hatchback. Shown here with available Custom interior trim.



Snow? Mud? Ice? Citation has the pull of front-wheel drive to help get you through.

A word about this catalog.

We have tried to make this catalog as comprehensive and factual as possible. And we hope you find it helpful. However, since the time of printing, some of the information you'll find here may have been updated. Also, some of the equipment shown or described throughout this catalog is available at extra cost. Your dealer has details and, before ordering, you should ask him to bring you up to date.

The right is reserved to make changes of any time without notice, in prices, colors, materials, equipment, specifications and models. Check your Chevrolet dealer for complete information.



The more you look into it, the more beautiful it looks.

Our new Citation is a strikingly handsome car just to look at.

But its true beauty goes much deeper. For Citation is also beautifully *efficient*.

Inspect those softly sweeping curves and you'll walk less than 15 feet from rear hatchback to honeycombed grille. A truly compact car.

Yet, when you open its four wide doors, we think you'll be astounded.

Stretching away inside is over six feet of combined front and rear leg room.

Seats are full and wide, spacious enough for five adults. And the middle rear-seat passenger, instead of sitting atop a drive shaft, sinks into soft foam cushioning.

A padded acoustical ceiling arches overhead; a color-keyed, one-piece, cut-pile carpet that extends even under the front seat lies comfortably underfoot. And behind it all, a luggage compartment that comes within 0.1 cu. ft. of the trunk size of our full-size 1979 Impala Sedan.

And Citation is built to stay beautiful. The lower panels are undercoated for resistance to rust and corrosion. The front fenders are lined with polymer.

All that in a maneuverable, fun-to-drive compact car?

Beautiful. Just beautiful.



4-Door Hatchback Sedan shown in available Custom Two-Tone beige and cinnabar with available side window reveal moldings, tinted glass, Custom interior, full wheel covers, white-stripe tires and bumper rub strips and guards.

The pull of front-wheel drive, the comfort of a Chevrolet ride.

If all you ever did in the 1980 Chevy Citation was drive around town, you'd get your money's worth.

But Citation was built to carry you much, much farther.

Up front, underneath Citation's transverse-mounted engine, we put front-wheel drive. To help pull you along through snow, mud and ice. Up snowy ski lodge roads. Down wet backwoods trails.

We put in the comfort of computer-selected coil springs and stabilizer bars front and rear. Driving the new Citation, you enjoy a firm yet satisfyingly smooth feel of the road. And, thanks to efficient aerodynamics and a multitude of rubber-cushioned mountings, an isolation from road and wind noise.

Once Citation's taken you away from it all, it can help you stay and enjoy it.



Fold down the rear seat and you open up 41.1 cu. ft. of room inside the Hatchback Coupe for tents, backpacks, bags, coolers and paraphernalia.

You can, with recommended equipment, tow 2000 pounds of trailer. And with the available roof carrier, you can carry big bundles or a small boat.

All of which doesn't sound like a conventional compact car.

And Citation isn't.

It's a whole new kind of compact car. From Chevrolet.

2-Door Hatchback Coupe shown in available Custom Two-Tone light and dark blue metallic with available side window reveal moldings, remote swing-out side windows, full wheel covers, white-stripe tires and bumper rub-strips and guards.

Let us introduce you to our Club Coupe.

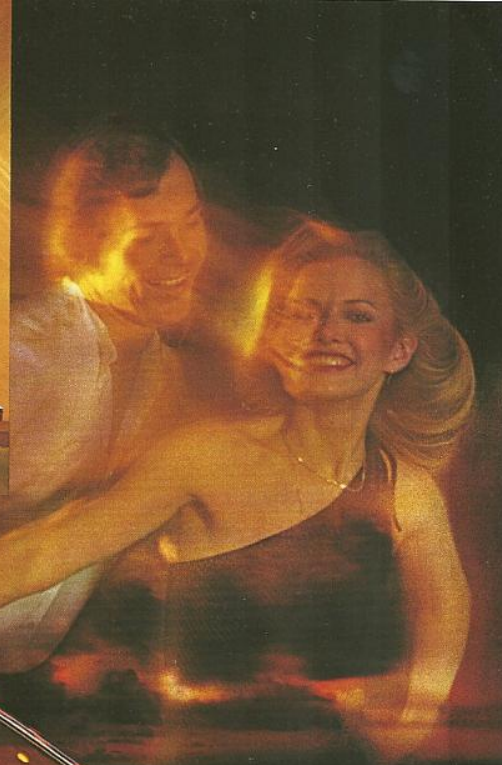
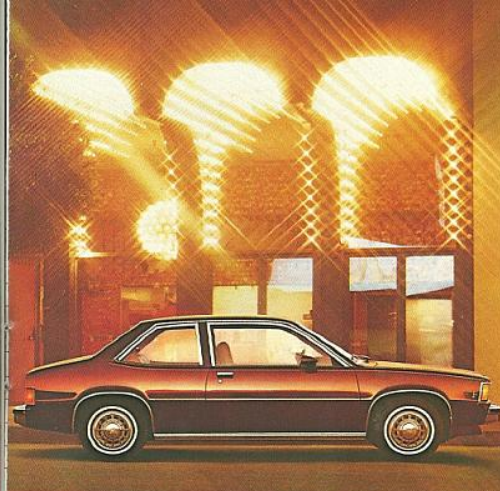
And now that we've impressed you with its looks, let us tell you some other things you're going to like about our Citation 2-Door Club Coupe.

Like the fact that you don't give up a lot of room to get into it. There are 56.2 inches of shoulder room, 53.7 of hip room, 37.3 of head room, 34.6 of leg room in the rear seat and even more hip, head and leg room up front.

You're also going to like the way it feels behind the wheel. The way it parks in compact spaces, maneuvers in cramped quarters. You're going to like the way it moves you with authority. And its feeling of solid substance on the road.

For beyond its smartly sloping roof line and 12.5-cu.-ft. trunk, our Club Coupe is pure 1980 Chevy Citation.

And once you drive it, we think you'll agree that's the most beautiful part about it.



2-Door Club Coupe shown in dark claret metallic with available side window reveal moldings, body side pin striping, Sport mirrors, remote swing-out side windows, full wheel covers, white-stripe tires and bumper rub strips and guards.

All Citations smooth out the road. The X11 unwinds it.

If you've ever driven a sporty car with front-wheel drive, rack-and-pinion steering and front and rear stabilizer bars, you've an idea of the agility and sheer driving fun of the Citation X11.

And that's just the start of what's in store.

Because to Citation's standard front-wheel drive, rack-and-pinion steering, stabilizer bars and 4-speed overdrive transmission, there's an added sport-type suspension on the X11. Plus P205/70R-13 white-lettered steel-belted radial tires. Plus rear spoiler, side striping, black grille and body accents, sport steering wheel and more. All standard.

And a few minutes looking over Citation's impressive list of available equipment



can bring you and your favorite piece of pavement into even closer rapport: 2.8 Litre V6 engine; bucket seats; console; and Special Instrumentation including tachometer, voltmeter, temperature and oil pressure gages.

And while you're pondering the beauty of an X11 in your immediate driving future, keep that impressive Citation EPA estimated fuel economy figure on page 2 in mind.

After all, another aspect of covering ground quickly is not having to stop for gas too often.



X11 Sport Equipment Package shown on silver and black 2-Door Hatchback Coupe and claret Club Coupe, both with available tinted glass. You also see the standard sport steering wheel with available Gage Package. AM/FM radio, air conditioning, intermittent windshield wiper and rear window defogger controls.

A good look at a feature standard on every

Up to now, we've shown you our new Citation models outfitted with some of their several available options.

The deluxe exterior package. Two-Tone paint. The Custom interior.

Now we'd like you to take a moment to inspect the Hatchback Sedan, Hatchback Coupe and Club Coupe.

As you can see, they are three very contemporary, very complete-looking automobiles. And if you're used to equating standard with stripped, three very pleasant surprises. Bright rocker panel moldings, bright



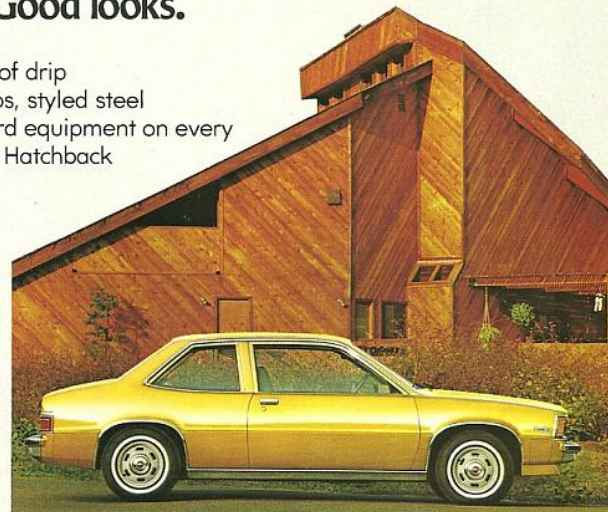
Hatchback Coupe shown in cinnabar with available tinted glass, remote control outside rearview mirror, full wheel covers, white-stripe tires and bumper rub strips.

1980 Chevy Citation. Good looks.

wheel opening moldings and roof drip moldings, color-accented hubcaps, styled steel wheels and more are all standard equipment on every 1980 Citation Hatchback Sedan, Hatchback Coupe and Club Coupe.

And if you're impressed by what we've done with the outside of our newest Chevrolet, turn the page.

What you'll see next is perhaps even more impressive.



Club Coupe shown in yellow with available white-stripe tires and bumper rub strips.



4-Door Hatchback Sedan shown in medium camel metallic with available wheel trim rings, white-stripe tires and bumper rub strips.

Standard in the compact Chevy Citation—mid-size room.

The EPA looked at the inside measurements of our Chevy Citation and dubbed it a mid-size car.

Significant. Because official EPA classifications are based on *interior* volume, not exterior bulk.

So if you have doubts about getting comfortable in a compact car, get into the spacious mid-size room of Chevy Citation.

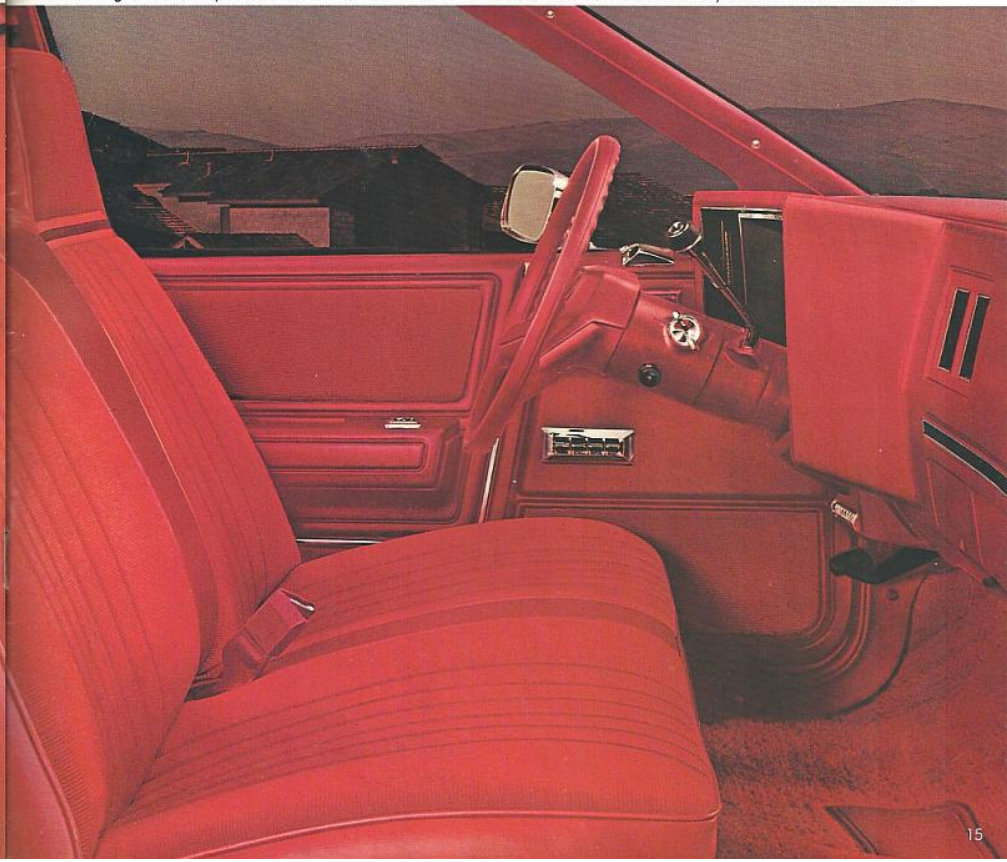
You'll find it right inside our compact Chevy Citation.

And after you've gotten comfortable with this interior, turn the page for other ways to stretch out in Citation. And some colorful ways to make it personally yours.

DIMENSIONS (inches)

INTERIOR	4-Door Hatchback	2-Door Hatchback	2-Door Coupe & Club Coupe
Head Room—Front	38.2	38.2	38.2
Head Room—Rear	37.5	37.5	37.3
Leg Room—Front	42.0	42.0	42.0
Leg Room—Rear	35.5	34.6	34.6
Hip Room—Front	55.2	55.2	55.2
Hip Room—Rear	53.9	53.7	53.7
Shoulder Room—Front	56.2	56.2	56.2
Shoulder Room—Rear	56.3	56.2	56.2
Total Cargo Volume Index (cu. ft.)	Rear seat up 20.1	20.1	—
	Rear seat down 41.1	41.1	—
Usable Luggage Capacity (cu. ft.)	—	—	12.5

Available Custom Cloth interior shown in carmine with available automatic transmission, power windows and door locks, air conditioning, automatic speed control, remote control outside rearview mirror, deluxe color-keyed seat and shoulder belts.



Custom Two-Tone Colors Available:

Beige/Dk. Green* Int. colors: Black, Camel or Green	Beige/Lt. Camel* Int. colors: Black or Camel	Lt. Blue*/Dk. Blue* Int. colors: Blue or Oyster	Lt. Camel*/Med. Camel* Int. colors: Black or Camel
Gray/Dk. Blue* Int. colors: Blue or Oyster	Gray/Dk. Claret* Int. colors: Black, Carmine or Oyster	Gray/Med. Gray* Int. colors: Black, Carmine or Oyster	Red/Black Int. colors: Black or Carmine
Silver/Med. Gray* Int. colors: Black, Carmine or Oyster	White/Dk. Blue* Int. colors: Blue or Oyster	White/Gray Int. colors: Black, Blue, Camel, Carmine or Oyster	Beige/Cinnabar Int. colors: Black or Camel

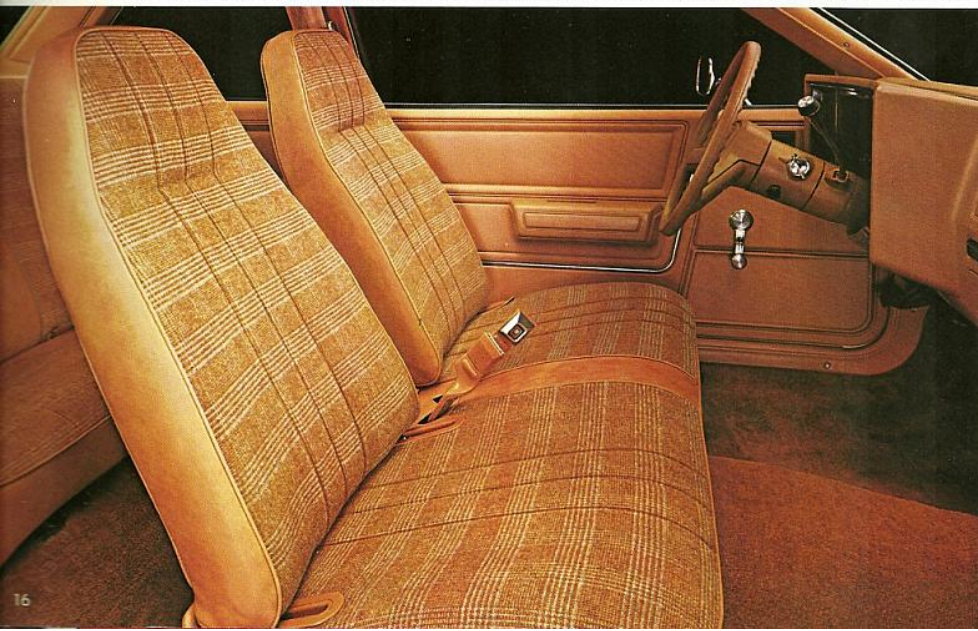
*Metallic

INTERIOR AND EXTERIOR COLOR COMBINATIONS

INTERIOR COLORS	BLACK	BLUE	CAMEL	CARMINE	GREEN	OYSTER
CITATION HATCHBACK SEDAN, HATCHBACK COUPE, CLUB COUPE	Custom Knit Cloth—Bench (Avail.) Custom Vinyl—Bench (Avail.) Custom Knit Cloth—Bucket (Avail.) Custom Vinyl—Bucket (Avail.)	X X X X	X X X X	X X X X	X X X X	X X X X
CITATION COUPE, CLUB COUPE, HATCHBACK COUPE AND HATCHBACK SEDAN	Sport Cloth—Bench (Avail.) Vinyl—Bench (Std.)	X X	X X	X X	X X	X X
EXTERIOR COLORS						
BEIGE	X	X	X	X	X	
BLACK	X	X	X	X	X	X
BLUE, DARK (METALLIC)	X	X	X	X		X
BLUE, LIGHT (METALLIC)	X	X				X
CAMEL, LIGHT (METALLIC)	X		X			
CAMEL, MEDIUM (METALLIC)	X		X			X
CINNABAR	X		X			X
CLARET, DARK (METALLIC)	X		X	X		X
GRAY	X	X	X	X		X
GREEN, DARK (METALLIC)	X		X		X	X
RED	X		X	X		X
SILVER	X	X		X		X
WHITE	X	X	X	X	X	X
YELLOW	X		X			X

Other ways to get comfortable in Citation.

Standard interior shown in camel with available sport cloth trim, deluxe color-keyed seat and shoulder belts and automatic transmission.



Available Custom vinyl bucket seats shown in oyster with available console and deluxe color-keyed seat and shoulder belts.



A look inside some of Chevy Citation's standard features.



Unitized Body Construction. Computerized structural analysis techniques were used to design Citation's strength.

Separate Powertrain Cradle with rubber-cushioned mountings helps isolate engine and drive train noise and vibration from passenger compartment.

Transaxle houses clutch, transmission and differential. Aluminum housing designed for stiffness to help reduce vibration into passenger area.

Front-Wheel Drive for impressive traction and a lower, flatter rear passenger floor.

Transverse-Mounted Engine helps provide passenger space. Cross-flow 4-cylinder design.

Constant Velocity Universal Joints help provide smoothness under hard, sharp cornering.

Rack-and-Pinion Steering for light, precise steering. Used in combination with MacPherson strut design.

4-Speed Manual Transmission with integral 0.81 overdrive fourth gear. Large synchronizing rings provide durability and smoothness of shifting.

Bolt-On Front Fenders simplify replacement.

Delco Freedom Battery never needs refilling.

Front Disc Brakes for resistance to fade. Self-adjusting. Audible wear sensors alert you when linings need to be replaced.

Inner Front Fenders for added resistance to corrosion.

Sealed Wheel Bearings front and rear. Lubricated for life. Maintenance-free.

High Energy Ignition. A solid-state system that eliminates points and ignition condenser, yet delivers a high voltage spark that helps extend time between recommended tune-ups.

Foot-Operated Parking Brake. In combination with front-wheel drive, permits all 4 wheels to be locked for security on grades; added anti-theft protection.

Instrument Panel Design allows instrument cluster and system controls to be serviced from the passenger compartment.

Catalytic Converter. Takes care of most of the emission control within the exhaust system so engine can be tuned for smooth, responsive performance.



SLIP STREAM STYLING

Efficient Aerodynamics. Low .417 drag coefficient of 4-Door Hatchback helps provide impressive fuel mileage, plus reduced wind turbulence and noise.

Full-Width Rear Seat for 3-passenger seating. Flips down to form large cargo area. In down position, rear cushion forms barrier between cargo area and front seat. Hatchback models only.

Coil Springs at each wheel for a smooth ride. Computer-selected to fit individual Citation models with specific equipment.

Power Flow-Through Ventilation. Outside intake duct provides flow of new air inside the car. Air exits through hidden outlets in door pillars.

Compact Rear Suspension helps eliminate "hump" underneath rear seat, improves middle rear seat passenger comfort.

5-Bolt Steel Wheels. Same type used on larger, heavier cars. 5.5" rim width, 42-mm offset.

Front and Rear Stabilizer Bars help reduce body lean during sharp turns.

Compact Fully Inflated Spare. Stows out of sight in separate compartment underneath luggage area.

P185/B0R Glass-Belted Radial Ply Tires offer less rolling resistance than conventional bias-belt tires.

Double-Wall Construction provides two layers of steel in doors, hood, rear deck lid.

Body by Fisher. Beautiful outside, strong underneath—double-panel doors, hood and deck lid, box section roof headers and pillars, heavily ribbed and formed underbody.

Steel Bumpers for strength and trailer-towing capability.

Concealed Luggage Compartment. Cover integral with rear hatch forms concealed 20.1-cu.-ft. area when rear hatch closed. Hatchback models only.

Multi-Mode Heat and Ventilation System provides defrost, outside air, heat, or combination outside air/heat. High level of vent air flow for efficiency.

Cutaway view shown with optional custom interior, white-stripe tires, wheel trim rings, power brakes, deluxe color-keyed seat and shoulder belts and side window reveal moldings.

DIMENSIONS (inches)				
EXTERIOR	4-Door Hatchback Sedan	2-Door Hatchback Coupe	2-Door Coupe & Club Coupe	
Wheelbase	104.9	104.9	104.9	
Length (overall)	176.7	176.7	176.7	
Width (overall)	68.3	68.3	68.3	
Height (loaded)	53.1	53.1	53.1	
Tread—Front	58.7	58.7	58.7	
Tread—Rear	57.0	57.0	57.0	
Curb Weight (pounds)	L4 2506 V6 2552	2486 2533	2463 & 2466 2510 & 2513	

More standard features to look for on the 1980 Chevy Citation.



Column-Mounted Control. Puts turn signals, headlight dimmer, windshield wipers and washers in one column-mounted switch for fingertip control.



Inside Hood Release. For convenience and anti-theft protection.



Cigarette Lighter* is standard up front, as is an ashtray.*



4th Gear Overdrive. Something to shift into for fuel economy at highway speeds.



Extensive Anti-Corrosion Treatments.

Includes: use of zinc-rich precoated metal outer door panels, rocker and rear-quarter panels; vinyl-base undercoat on lower panels; molded polymer front-fender liners.



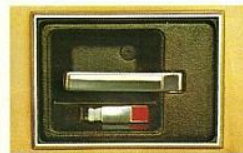
Lockable Glove Box. Key locks for security. A feature you'll find on more expensive cars. And on every 1980 Chevy Citation.*



Compact Inflated Spare. Designed to save space and weight. Comes fully inflated, ready to use for emergency purposes.



Inertia-Type Seat Back Latches. No exterior latches to grope for. Front seat backs fold forward at a touch, yet latch automatically in sudden stops. Two-door models only.



Sliding Door Locks are flush-mounted and color-coded to tell you at a glance when they're locked.

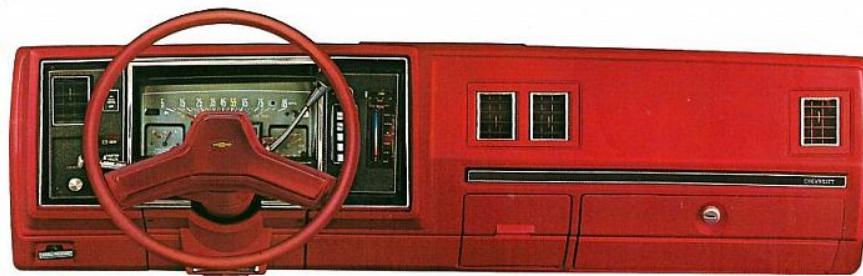
Standard Engine	Ordering Code (RPO)	Displacement (cubic inches)	Power Rating*	Transmission Availability	
				Four-Speed Manual	Automatic
ALL STATES EXCEPT CALIFORNIA					
2.5 Litre 2-Bbl. L4 (A)	LW9	151	90	Std.	EC
CALIFORNIA ONLY (with California emission requirements)					
2.5 Litre 2-Bbl. L4 (A)	LW9	151	90	Std.	EC

*S.A.E. net horsepower as installed.

(A) PRODUCED BY GM—PONTIAC MOTOR DIVISION.

A WORD ABOUT ENGINES

The Chevrolets shown in this catalog are equipped with GM-built engines produced by various divisions. Please refer to the Power Team charts shown above and on page 22.



A Handsome Look Ahead. Color-keyed instrument panel and 2-spoke steering wheel, bright instrument panel trim plate,* glove box lock,* AM radio* (available AM/FM shown), and windshield-mounted antenna*—all standard.



AM Radio.* Plus the pleasure of Body by Fisher to add to your listening enjoyment.



Bright Wheel Openings* add a finishing touch.



Bright Rocker Panel Moldings.* Both handsome and functional.



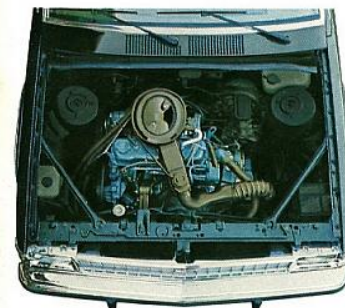
Bright Drip Moldings* for improved exterior appearance.



Glass-Belted Radial Ply Tires are standard, as are color-accented hubcaps.



Front Valance Panel. Functional full-width body-color panel adds a sporty look to your new Citation.



2.5 Litre L4 Engine mounted transversely for a roomier passenger compartment. Modern large-bore, short-stroke design features a rugged cast-iron engine block with five main bearings. Aluminum inlet manifold and carburetor, full-flow oil filter, full-pressure lubrication. Cross-flow cylinder head and Varajet staged, 2-barrel carburetor help provide an efficient combination of fuel economy and performance.

And even more: Rectangular headlights • Bright molding on the hood and windshield perimeter • Outside rearview mirror • Windshield and rear window bonded to body • Energy-absorbing bumper system • Hidden seat belt retractors • Right-hand door jamb dome light switch* • Dome light. All of which add up to a very attractive option: being able to afford a few options. For a look at some of them, turn the page. *Except Coupe 1XH11.

Some available options you can add to your new Chevy Citation.



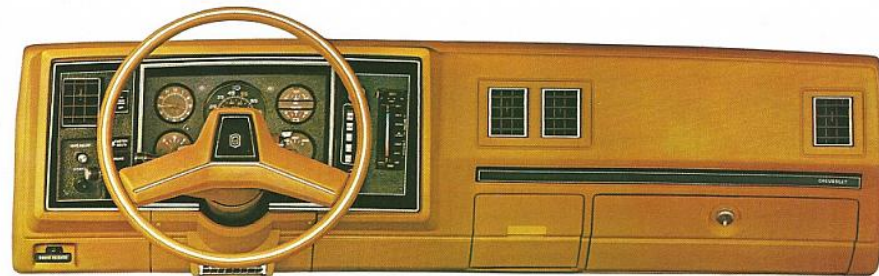
Roof Carrier. A handy way to top off Citation. Cross rails are removable so the rack won't get in the way of carrying a cartop boat.



Intermittent Wiper System. Varies the windshield wiper cycle to adjust for heavy downpour or light mist.



Comfortilt Steering Wheel. Adjusts to six positions for most comfortable driving angle and for easier entry and exiting.



Custom Interior. You saw the smart seat upholstery on pages 14-15. Here you see the handsome instrument panel and deluxe steering wheel. Shown with available air conditioning, Gage Package (electric clock, voltmeter, coolant temperature and oil pressure gauges), AM/FM radio, and intermittent windshield wiper and rear window defogger controls.



2.8 Litre V6 Engine. A totally new engine designed for the 1980 Chevy Citation. Features compact design with aluminum inlet manifold, water pump housing, engine front cover and carburetor. Strong cast-iron cylinder block and heads, yet is relatively light in weight.



Electric Rear Window Defogger. Electric element helps keep rear window free of mist and frost silently and without drafts.



Rally Wheel Trim. Puts center cap with bright wheel nut covers, black point accents and bright aluminum trim ring together for sporty look. Standard on X11.



Full Wheel Covers. Dress up your Citation with chrome-plated stainless steel and black and textured silver accent areas.



Wheel Trim Ring. Finishes off standard hubcap with wide ring of stainless steel.



The GM Continuous Protection Plan. It offers service protection in addition to that provided by GM's new vehicle limited warranty. Ask your dealer about it.

A WORD ABOUT ASSEMBLY, COMPONENTS AND OPTIONAL EQUIPMENT IN THESE CHEVROLETS.

The Chevrolets described in this catalog are assembled at facilities of General Motors Corporation operated by the GM Assembly Division. These vehicles incorporate thousands of different components produced by various divisions of General Motors and by various suppliers to General Motors. From time to time during the manufacturing process, it may be necessary, in order to meet public demand for particular vehicles or equipment, meet federally mandated emissions, safety and fuel economy requirements, or for other reasons, to produce Chevrolet products with different components or differently sourced components than initially scheduled. All such components have been approved for use in Chevrolet products and will provide the quality performance associated with the Chevrolet name.

With respect to extra cost optional equipment, make certain you specify the type of equipment you desire on your vehicle when ordering it from your dealer. Some options may be unavailable when your car is built. Your dealer receives advice regarding current availability of options. You may ask the dealer for this information. GM also requests the dealer to advise you if an option you ordered is unavailable. We suggest you verify that your car includes the optional equipment you ordered or, if there are changes, that they are acceptable to you.

Available Engine	Ordering Code (RPO)	Displacement (cubic inches)	Power Rating*	Four-Speed Manual	Automatic
------------------	---------------------	-----------------------------	---------------	-------------------	-----------

ALL STATES EXCEPT CALIFORNIA

2.8 Litre 2-Bbl. V6 (A)	LE2	173	115	Std.	EC
-------------------------	-----	-----	-----	------	----

ALL STATES EXCEPT CALIFORNIA

(with High Altitude emission requirements)

2.8 Litre 2-Bbl. V6 (A)	LE2	173	NA	NA	EC
-------------------------	-----	-----	----	----	----

CALIFORNIA ONLY (with California emission requirements)

2.8 Litre 2-Bbl. V6 (A)	LE2	173	110	Std.	EC
-------------------------	-----	-----	-----	------	----

*S.A.E. net horsepower as installed.

(A) PRODUCED BY GM—CHEVROLET MOTOR DIVISION.

NA—Not Available.

Sport Mirrors. Add a sleek aerodynamic look. Left-hand mirror remote controlled, right-hand manual.

Reclining Passenger Seat. Adjusts to any position from normal to comfortably reclined. Ideal for long trips.

STANDARD SAFETY FEATURES. Occupant Protection

Seat belts with push-button buckles for all passenger positions • Two front combination seat and inertia reel shoulder belts for driver (with reminder light and buzzer) and front passenger • Energy-absorbing steering column • Passenger guard door locks • Safety door latches and stamped steel hinges • Folding seat back latches • Energy-absorbing padded instrument panel and front seat back tops • Laminated windshield • Safety armrests.

Accident Avoidance

Side marker lights and reflectors • Parking lamps that illuminate with headlights • Four-way hazard warning flasher • Backup lights • Lane change feature in direction signal control • Windshield defrosters, washer and dual-speed wipers • Wideview inside mirror (vinyl-edged, shatter-resistant glass and deflecting support) • Outside rearview mirror • Dual master cylinder brake system with warning light • Starter safety switch • Dual action safety hood latches.

Anti-Theft

Anti-theft ignition key reminder buzzer • Anti-theft steering column lock.



Removable Sun Roof. A refined design with front-hinged glass panel. Pops up for ventilation or can be completely removed. Handy storage bag included.

Reasons to buy or lease Chevy Citation.

- CITATION—THE FIRST CHEVY OF THE '80s
- Comfortable roominess for five adults with a trim exterior design.
- Impressive front-wheel-drive traction and performance from a choice of transverse-mounted engines: the standard cast-iron 4-cylinder or the available V6.
- Spacious versatile cargo carrying capacity in a selection of stylish models.
- High level of standard equipment.
- Wide selection of comfort and convenience options.
- Quality engineered and designed for value.
- Concealed luggage space with rear seat up in 2-door and 4-door hatchback models.

Build Your Own Citation.

(See your Chevrolet dealer for current ordering information and specific model/option availability.)

MODELS

Citation 4-Door Hatchback Sedan

Citation 2-Door Club Coupe

Citation 2-Door Hatchback Coupe

Citation 2-Door Coupe

COLORS

(See charts on pages 16 and 17 for color availability and combinations.)

Exterior color _____ Interior color _____ Custom Two-Tone paint _____ Upholstery _____

ENGINES

(See charts on pages 20 and 22 for engine/transmission availability.)

2.5 Litre L4 (151 Cu. In.)—Std.

2.8 Litre V6 (173 Cu. In.)—Avail.

TRANSMISSIONS

Four-Speed Overdrive Manual—Std.

Automatic Transmission—Avail.

AVAILABLE OPTIONS

Air conditioning
Comfortilt steering wheel
Automatic speed control
Deluxe color-keyed seat & shoulder belts
Power brakes
Power steering
Power windows
Bumper guards
Bumper rub strips
Electric clock
Console
Bucket seats
Electric rear window defogger
Power door lock system
Color-keyed floor mats—front & rear
Special Instrumentation
Tinted glass
Quiet Sound/rear compartment decor
Gage Package
Custom interior
Auxiliary lighting
Day/night inside rearview mirror

Remote-control outside rearview mirror, LH
Sport mirrors, LH remote & RH manual
Removable sun roof
Reclining passenger seat back
Quiet Sound Group
Sport steering wheel
Custom Two-Tone paint
Body side pin striping
Roof carrier
Deluxe exterior

DECORATIVE TRIM

Body side moldings
Side window reveal moldings
Door edge guard moldings

SOUND EQUIPMENT

AM/FM radio
AM/FM stereo radio
AM/FM stereo radio with 8-track stereo tape
AM/FM stereo radio with stereo cassette tape
AM/FM stereo/citizens band radio w/power antenna

Dual front and rear speakers
Rear seat speaker

SUSPENSION EQUIPMENT

Heavy-duty front and rear suspension
Sport suspension

TIRES

P185/80R-13 glass-belted radial ply white-stripe tires
P185/80R-13 steel-belted radial ply blackwall tires
P185/80R-13 steel-belted radial ply white-stripe tires
P205/70R-13 steel-belted radial ply white-stripe tires
P205/70R-13 steel-belted radial ply white-lettered tires

X11 SPORT EQUIPMENT PACKAGE

Includes: black-accented bright radiator grille. Black accents on headlight bezels, taillights, rocker panel molding, B pillar, rear quarter and license plate pocket. X11 identification,

decal stripes and rear spoiler. Bright side window moldings. Body-color dual sport mirrors. Rally wheel trim. Sport steering wheel. Sport suspension and white-lettered steel-belted radial ply tires. Body side pin striping. Body belt line accent stripe. Bumper rub strips.

WHEELS AND WHEEL COVERS

Full wheel covers
Rally wheel trim
Wheel trim rings

MISCELLANEOUS

Remote swing-out side windows
Intermittent windshield wiper system
Dual horns
Heavy-duty battery
Generator, 70-amp Delcotron
Heavy-duty cooling

THE GM CONTINUOUS PROTECTION PLAN

Ask your dealer about it.

Chevrolet

