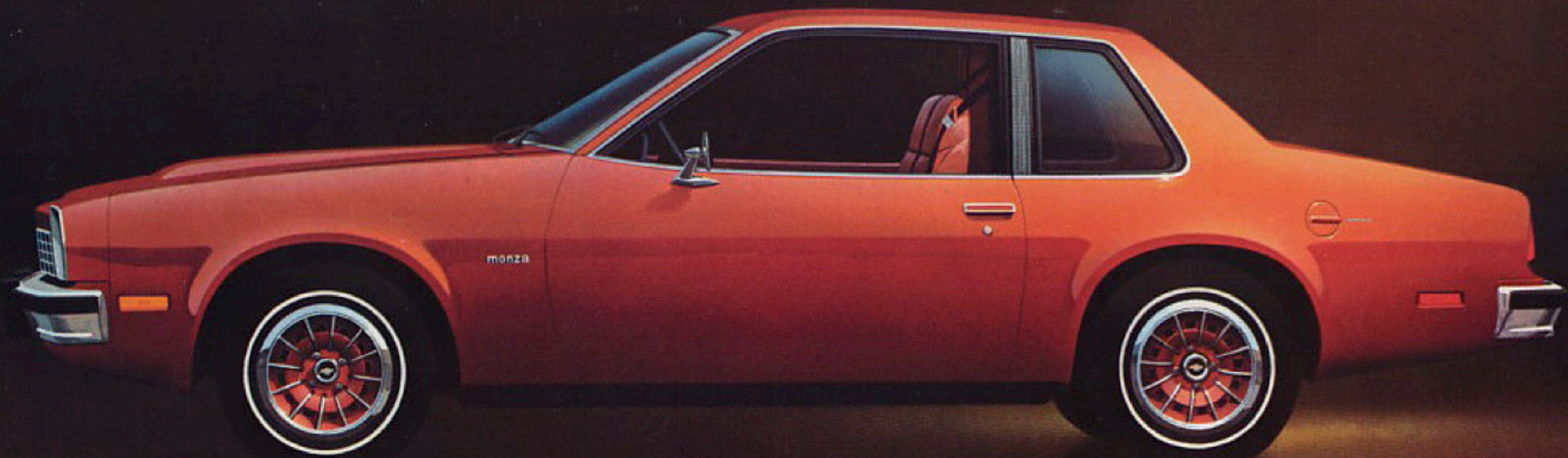


# 1976 Monza

2+2 Hatchback / Towne Coupe



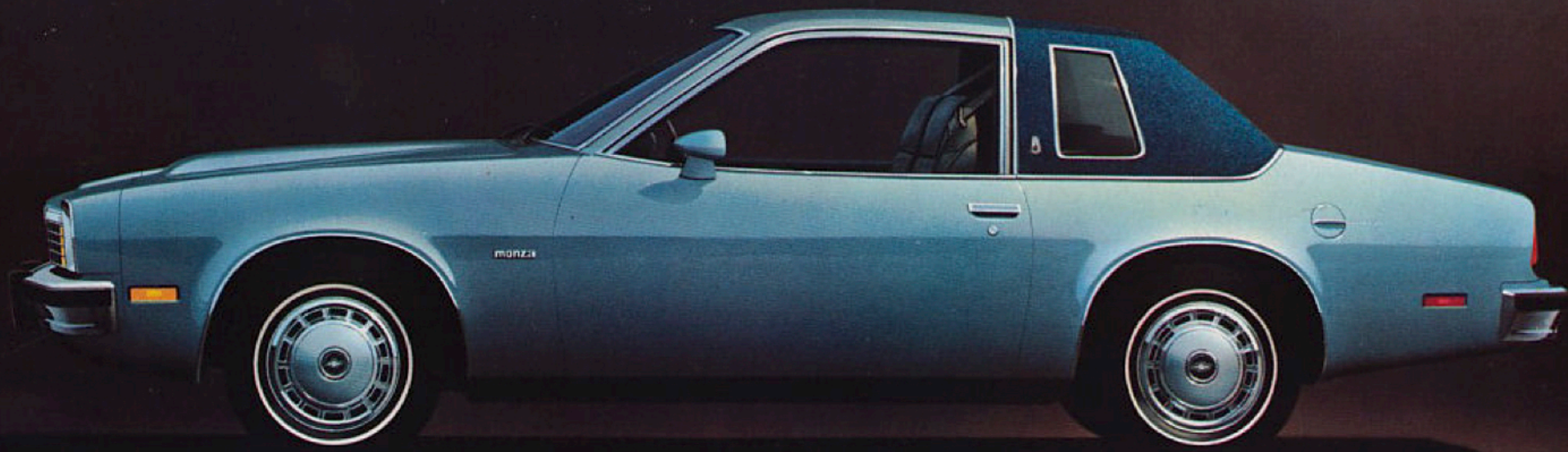




**Monza Towne Coupe.** (Side, front and rear.) Shown with available Sport Equipment, bumper guards, deluxe bumpers and white stripe tires.







**Monza Towne Coupe.** Shown with available Cabriolet Equipment, sport mirrors, bumper guards, deluxe bumpers, white stripe tires and wheel opening moldings.



**2+2 Hatchback.** Shown above with available sport mirrors, aluminum wheels, white stripe tires and wheel opening moldings. Also shown on cover.



## Monza for 1976. Put on your driving gloves and meet the family.

The Monza family is only a year old. But what a lot of excitement these new small cars have stirred up in that time. It started with our European-looking Monza 2+2 Hatchback. During its first year, it won the honor: *Motor Trend* magazine "Car of the Year."

Part way through last year came the Monza Towne Coupe. A little dressier kind of small car. Fun to drive. Sensibly priced. And, suddenly, small cars began to look a lot better than ever to still more and more people.

The 2+2 Hatchback styling is smooth and sporty, from rectangular headlights to its utility hatch. The Towne Coupe has cleaner, more traditional lines

than before. It carries Monza's lowest price sticker and allows you the opportunity to add to its distinctiveness with available Sport Equipment.

Also for '76, Monza offers a very formal version of the Towne Coupe. With Cabriolet Equipment, it features a spécial vinyl roof cover and opera-type rear quarter windows that help give it a very sophisticated, classic look.

Inside, we've made every Monza a nice place to be. The hump between the bucket seats has been cut down to a lower level. And if you're accustomed to the finer luxuries of life, there's a Special Custom Interior available with rich velour upholstery.

Under the hood, both standard and available four-cylinder engines have new hydraulic valve lifters. Their rather significant benefit to you is quieter power with less maintenance, because valve adjustments are things of the past now. And, depending on model and other equipment, both the 2-barrel Four and our small Monza V8 can be ordered with an available 5-Speed manual transmission.

Oh yes, one nice last thing — Monza's Dura-Built 2.3 Litre 4-cylinder engine is now covered by a 60,000-mile guarantee for up to five years (details on page 6). That's a lot of confidence in Monza engine dependability.

EPA Mileage Rating	
MPG—Highway	35
MPG—City	23
Engine	Avail. 2.3 Litre Two-Barrel
Transmission	Avail. 4-Speed
Axle Ratio	Std. 2.93:1

*Remember:* These mileage figures are estimates. The actual mileage you get with Monza will vary depending on the type of driving you do, your driving habits, your car's condition, and available equipment. Air conditioning was not installed for these tests. See your Chevrolet dealer for EPA mileage figures on other Monza engine/transmission combinations. In California, see your dealer for EPA mileages and engines/transmissions available on California emission-equipped cars.

Monza available cloth-and-vinyl interior.



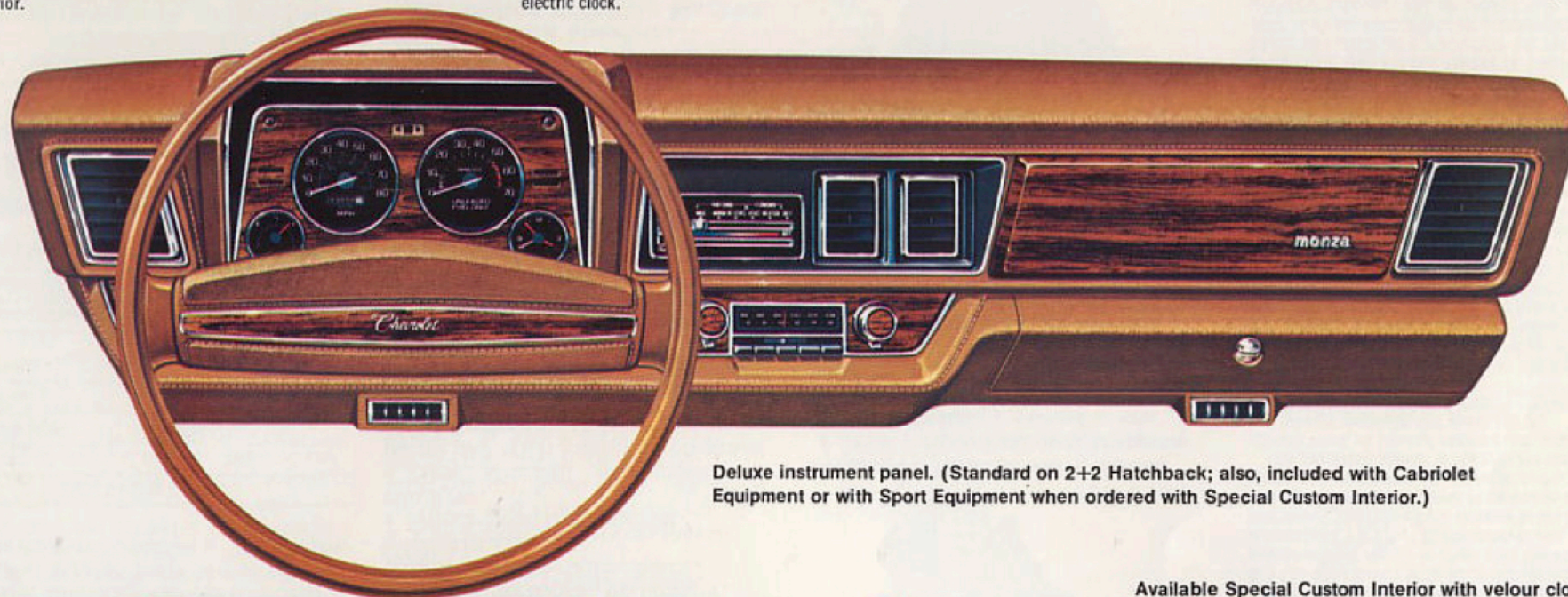


Special two-spoke steering wheel with wood-grain vinyl insert. Wheel, shroud and column color-keyed to interior.

Special gauge instrumentation, including tachometer, voltmeter, temperature, "Add Coolant" light and electric clock.

Available Four-Season air conditioning and AM/FM radio.

New "stitched" instrument panel pad with added wood-grain vinyl ornamentation color-keyed to interior.



Deluxe instrument panel. (Standard on 2+2 Hatchback; also, included with Cabriolet Equipment or with Sport Equipment when ordered with Special Custom Interior.)

Available Special Custom Interior with velour cloth.



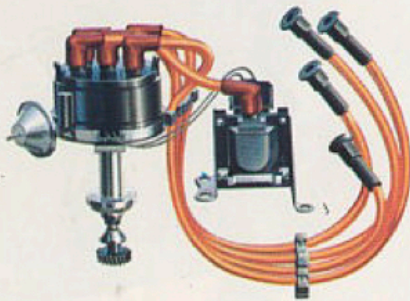


# What you get.

Every '76 Monza includes a host of standard equipment. We've listed much of it here.

## To help you save money.

- High Energy Ignition—up to 85% hotter spark than conventional systems, which means responsive ignition performance and good fuel combustion plus longer lasting plugs.



- Long intervals between recommended service help you save money as you operate a '76 Monza.

Long Service Intervals	
1976	
Spark plugs	22,500 miles
Engine oil	6 months or 7500 miles
Oil filter	First 7500 miles, then every 15,000 miles
Chassis lubrication	6 months or 7500 miles
Transmission fluid	60,000 miles

Check complete details in the Owner's Manual.

## Exterior/Interior features.

### 2+2 Hatchback.

- Quad rectangular headlights inset into a soft, resilient urethane front-end skin that looks like metal, resists minor dings.
- Front and rear hydraulic-type bumper system with integral black impact strips and bumper guards.
- European-type finned wheel covers with GT-type center hub and bright wheel nuts.

### Towne Coupe with Sport Equipment.

- Black pillar applique with argent edges in front of the large rear quarter windows.
- Body-colored finned wheel covers with argent painted edges.
- Bright windshield and rear window moldings with black trim.
- Front stabilizer bar.
- Quiet Sound Group insulation.
- Body-contoured high-back front bucket seats.
- Knit cloth-and-vinyl upholstery in black, buckskin or firethorn; or all-vinyl in black, buckskin, firethorn or white.

### Towne Coupe with Cabriolet Equipment.

Includes all Sport Equipment listed above (except first two items) plus the following:

- Padded vinyl roof cover in choice of firethorn, mahogany, white, silver metallic, black, buckskin and blue.
- Opera-type rear quarter windows.
- New "stitched" instrument panel pad with added wood-grain vinyl ornamentation.
- Special two-spoke steering wheel with wood-grain vinyl insert, and with wheel, shroud and column color-keyed to interior.

### Monza Spyder Equipment.

Available on 2+2 and Towne Coupe with Sport Equipment. Also, only available with 5-Speed manual or Turbo Hydra-matic transmission.

- 2-barrel, Dura-Built 2.3 Litre engine.
- Floor console unit.
- Large front/rear stabilizer bars.
- Special shock absorbers.
- Steel-belted radial ply blackwall tires.
- Wheel opening moldings.
- Day-night inside mirror.
- Sport steering wheel.

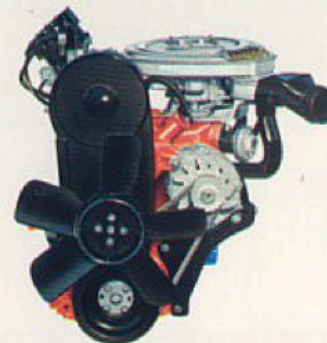
## Power teams.

Engine	Carb. Barrels	Net HP	Engine Usage	Transmissions
Dura-Built 2.3 Litre Four*	1	70	Std.	3-Speed Std. 4-Speed Avail. Turbo Hydra-matic Avail.
Dura-Built 2.3 Litre Four†	2	84	Avail.	3-Speed Std. 4-Speed Avail. 5-Speed Avail. Turbo Hydra-matic Avail.
4.3 Litre V8*‡	2	110	Avail.	3-Speed Std.** 4-Speed Avail.** Turbo Hydra-matic Avail.
5.0 Litre V8†‡	2	140	Avail.	Turbo Hydra-matic Avail.

\*NOT AVAILABLE IN CALIFORNIA.  
†Not available on basic Towne Coupe.

‡California Emission Equipment required in California.  
\*\*Check dealer for availability.

## Engines and transmissions.



- Quiet hydraulic valve lifters.
- New 5-Speed manual transmission available.
- Available 4-Speed manual transmission has a new aluminum case with 4-cylinder engine.
- 50,000-mile air filter recommended service interval on 2.3-litre (140-cu.-in.), 4-cylinder engines.
- Coolant recovery system helps prevent coolant loss.



- New Freedom battery. Needs no refill.
- Electric fuel pump in gas tank.

## Monza's 5-year, 60,000-mile, limited engine warranty.

This 5-year, 60,000-mile engine guarantee is an added value feature included in your 1976 Monza car.

Chevrolet Motor Division, General Motors Corporation, guarantees to the owner of the 1976 Monza equipped with a Chevrolet 140-Cubic-Inch 4-Cylinder Engine that any authorized Chevrolet dealer will make repairs without charge to the owner on those engine parts listed below made necessary because of defects in material or workmanship. Repairs will be made within a reasonable time after delivery of the vehicle to a Chevrolet dealer at its place of business. This guarantee shall remain in effect until the Vehicle has accumulated 5 years or 60,000 miles of use, whichever first occurs, from the date of delivery to the first retail purchaser or date first placed in service as a demonstrator or company car, whichever is earlier.

This guarantee applies to the cylinder block, cylinder head, all internal engine parts, intake and exhaust manifolds and water pump.

This guarantee in no way limits the terms of the Chevrolet New Vehicle Warranty.

This guarantee does not cover: (1) Repairs required because of misuse, negligence, alteration, accident, lack of reasonable and proper maintenance or replacement of maintenance items (such as spark plugs, positive crankcase ventilation valves, filters) made in connection with normal maintenance services; (2) Loss of time, inconvenience, loss of use of the Vehicle or other matters not specifically included; (3) Any repairs if the Vehicle is registered and normally operated outside the United States or Canada or if the Vehicle's odometer is altered so that actual mileage cannot be determined.

Chevrolet does not authorize any person to create for it any other obligation or liability in connection with the Chevrolet 140-Cubic-Inch 4-Cylinder Engine parts covered by this guarantee. ANY IMPLIED WARRANTY APPLICABLE TO THESE ENGINE PARTS IS LIMITED IN DURATION TO THE DURATION OF THIS WRITTEN GUARANTEE. CHEVROLET SHALL NOT BE LIABLE FOR CONSEQUENTIAL COMMERCIAL DAMAGES RESULTING FROM BREACH OF THIS GUARANTEE OR ANY IMPLIED WARRANTY.





- Full-width hatchback rear door, easy-to-open counterbalanced arms.
- Wraparound rear lights set in bright trim.
- Special two-spoke steering wheel with wood-grain vinyl insert, and with wheel, shroud and column color-keyed to interior.
- Quiet Sound Group package. Added sound insulation for engine compartment, hood and interior.
- New "stitched" instrument panel pad with added wood-grain vinyl ornamentation.
- Knit cloth-and-vinyl upholstery in black, buckskin or firethorn; or all-vinyl in black, buckskin, firethorn or white.

#### **Towne Coupe.**

- Large rear quarter windows.
- Bright metallic wheel covers.
- Full foam bucket seats in front, bench seat in rear.
- Sport cloth upholstery in black or buckskin.
- Bright chrome bumpers, bright headlight bezels and classic grid grille with hidden parking and turn signals.
- Body-colored rear bumper cove and rocker panels.
- Sound insulation to help make a quiet interior when driving.

- Special instrumentation and "stitched" instrument panel pad with added wood-grain vinyl accents (standard on 2+2).
- Distinctive "Spyder" identification.

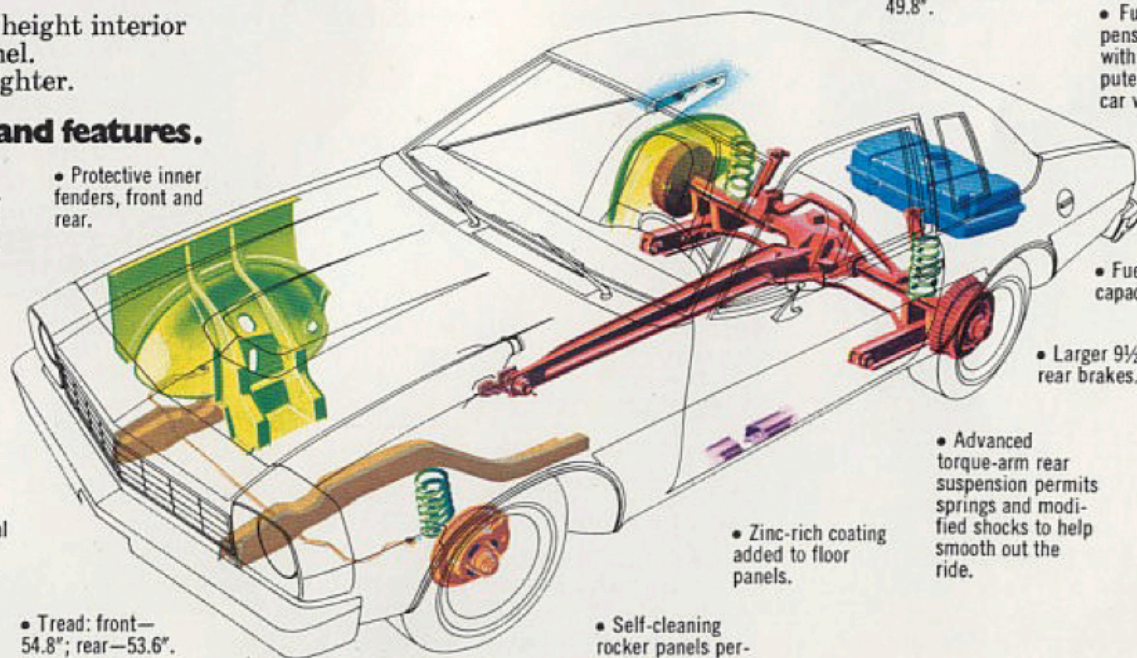
#### **Features on all Monzas.**

- Exterior colors: light blue metallic, dark blue metallic, firethorn metallic, mahogany metallic, lime green metallic, cream, bright yellow, medium orange, black, buckskin, saddle brown metallic, silver, antique white and dark green metallic.
- Molded soft door trim panel with pleated map pockets and recessed door handles.
- Nylon cut-pile carpeting.
- Flow-through ventilation system. It keeps outside air circulating inside (with the ignition on), even when the car is stopped and the windows are up.
- Floor-mounted transmission lever.
- New lower height interior driveline tunnel.
- Cigarette lighter.

#### **More facts and features.**

- Magic-Mirror acrylic lacquer exterior finish.
- Double-panel door, hood, roof and deck-lid construction.
- New vented rotor front disc brakes, fade-resistant, self-adjusting, with audible wear signal to tell you when to replace linings.

- Protective inner fenders, front and rear.



- Tread: front—54.8"; rear—53.6".

- Width: 65.4".

- Wheelbase: 97.0". Length: Hatchback—179.3"; Towne Coupe—177.8".

#### **For your safety and security.**

##### **Occupant protection.**

- Seat belts with pushbutton buckles for all passenger positions.
- Two combination seat and inertia reel shoulder belts for driver and right front passenger (with reminder light and buzzer).
- Energy-absorbing steering column.
- Safety steering wheel.
- Passenger-guard door locks.
- Safety door latches and hinges.
- Folding seat back latches.
- Energy-absorbing padded instrument panel and front seat back tops.
- Contoured windshield header.
- Thick-laminate windshield.
- Safety armrests.
- Cargo guard (Towne Coupe).
- Contoured roof inner panel.

##### **Accident prevention.**

- Side marker lights and reflectors.
- Parking lights that illuminate with headlights.
- Four-way hazard warning flasher.
- Lane-change feature in direction signal control.
- Back-up lights.
- Windshield defrosters, washers and dual-speed wipers.

- Wide-view inside mirror (vinyl-edged, shatter-resistant glass and deflecting support).
- Outside rearview mirror.
- Dual master cylinder brake system with warning light.
- Starter safety switch.
- Dual-action safety hood latch.

##### **Anti-theft.**

- Ignition-key reminder buzzer.
- Steering column lock.

#### **The size inside .**

Headroom: 2+2 Hatchback front—37.7", rear—35.3"; Towne Coupe front—37.5", rear—37.2". Hip room: Hatchback front—47.5", rear—42.0"; Towne Coupe front—48.6", rear—42.0". Shoulder room: Hatchback front—51.0", rear—51.2"; Towne Coupe front—51.7", rear—50.8". Leg room: front—42.8"; Hatchback rear—29.6", Towne Coupe rear—28.2".

- Loaded height: Hatchback—50.2"; Towne Coupe—49.8".

- Full Coil suspension all around with springs computer-selected to car weight.

- Fuel tank capacity: 18½ gals.

- Larger 9½" x 2" rear brakes.

- Advanced torque-arm rear suspension permits springs and modified shocks to help smooth out the ride.

- Zinc-rich coating added to floor panels.

- Self-cleaning rocker panels permit air and water to travel through and drain at ends of panel. Help prevent rust.



## What you can add.

Chevrolet offers a wide selection of available options to personalize your new Monza. Availability often depends on the model and other equipment selected. Your Chevrolet dealer can answer any questions.

### For comfort and convenience.

- Adjustable driver's seat back.
- Four-Season air conditioning. Easy-to-use controls for heating, cooling, defrosting or defogging, plus bi-level setting for warm air at interior's lower level, cool air at upper level.



- Radios and tape players are Delco-designed for your new Monza. Available in a variety of combinations to handle any taste in listening. There's an AM radio, AM/FM radio, AM/FM stereo radio, and an eight-track stereo tape system with either AM or AM/FM stereo radio. Factory-installed radios include windshield antennas.
- Rear seat speaker.
- Electro-Clear rear window defogger.
- Electric clock (standard on Hatchback).
- Tinted glass.
- Auxiliary Lighting Group. Includes underhood light, glove box light, headlight reminder buzzer and front door jamb switch.
- Twin sport mirrors; left-hand

remote, right-hand manual. Body-colored.

- Comfortilt steering wheel. Adjusts to six different positions.



- Stowaway spare. Much smaller than regular spare, adds to available cargo capacity.



- Roof luggage carrier available on Hatchback.

### For appearance.

- Special Custom Interior with rich cloth seat trim in buckskin or firethorn color. Includes deluxe color-keyed seat and shoulder belts, 24-oz. cut-pile carpeting, other luxury accents.
- Two-spoke sport steering wheel with high-gloss rosewood vinyl trim plate.



- New full center console available with all transmissions.
- Deluxe color-keyed seat and shoulder belts.
- Bumper guards, front and rear.
- Rear spoiler and front air dam available on Hatchback only (check dealer on availability).
- Body side moldings with vinyl insert.
- Aluminum door edge guards.
- Forged aluminum wheels. Set of four, includes Stowaway spare.
- Special wheel covers.



- Monza's new Sky Roof has tinted reflectorized glass that slides open to give you an open-sky effect in any weather. Check dealer for availability.

### Mechanical items.

- Available transmissions: 5-Speed manual (shown at left), 4-Speed manual and Turbo Hydra-matic.
- Available rear axle ratios. High-altitude (3.42 with 2.3-litre 4-cylinder, 2-barrel engine and 2.93 with 4.3-litre V8). Highway axle with relatively lower ratio, also available.
- Positraction. For added rear wheel traction.
- Econominder Gauge. Tells when car is being driven in an economical range.
- Sport suspension.
- GM-Specification steel-belted radial ply tires in blackwall, white stripe or white letter styles. Offer low rolling resistance and impressive traction in snow and on wet roads.
- Power assist for Monza's standard front disc brakes.
- Variable-ratio power steering.
- Heavy-duty Freedom battery.
- Heavy-duty radiator.



All illustrations and specifications in this literature are based on the latest product information available at the time of publication approval. The right is reserved to make changes at any time without notice in prices, colors, materials, equipment, specifications and models, and to discontinue models. Chevrolet Motor Division, General Motors Corporation, Detroit, Michigan 48202. LITHO IN U.S.A.



*Chevrolet salutes America's Bicentennial as a sponsor of the U.S. Olympic Team.*

