

1976 Chevelle

Chevrolet





Malibu Classic Coupe. Shown with available vinyl roof, full wheel covers, bumper guards, deluxe bumpers and white stripe tires.



Malibu Classic Landau Coupe. Shown with white stripe tires and bumper guards. (Also shown on front cover with available Rally wheels.)



Malibu Classic Sedan. Shown with available vinyl roof, sport mirrors, full wheel covers, bumper guards, deluxe bumpers and white stripe tires.

1976 Chevelle.

It's a size whose time has come.

Chevelle's combination of attributes is particularly right for today.

That combination includes a size that's comfortable for highway cruising, for carrying six adults, for manoeuvring easily through in-town traffic and parking situations, and for fitting conveniently in today's garages.

Today's Chevelle is a combination designed especially for people who no longer need, or want, a large car—yet who would not be truly comfortable with a small car.

1976 Chevelle. Don't think of it as less car than a big car. Think of it as the same amount of car in a more popular size.

Malibu Classic. The finest expression of Chevelle.

You've seen Malibu Classic's fine exterior styling on the preceding pages. We now invite you to examine the rich interiors shown on these pages. Inside and outside, we think our Malibu Classic combines all the quality characteristics that the name "Classic" promises.

The Malibu Classic front-end features an outstanding diamond-patterned grille, the latest in rectangular headlight design, and the famous Classic crest hood ornament, symbol of Chevelle excellence. The rear-end has been restyled, too. New taillamps and bumpers offer revised design integration with the body. The result, as you can see, is highly complimentary to Chevelle Malibu Classic's styling.

In addition, the Malibu Classic Landau Coupe has a distinctive vinyl roof, white stripe tires, colour-keyed body striping, dual sport mirrors, and colour-keyed wheel covers designed exclusively for the Landau exterior. Landau adds yet another dimension to the coupe's clean styling and distinctive coach windows.

But the interior environment of a Malibu Classic—where you spend your time—is probably what you're most interested in.

Here, too, the name "Classic" stands up well under close inspection. Classic's rich knit-cloth interiors are stylish without being pompous. Four-inch-thick full foam seats are made even more

comfortable with a fold-down centre armrest up front. Full vinyl interiors are also available in a wide range of colours. Front doors are made more convenient with an integrated pull strap. And front and rear doors are made plusher with soft trim accent on the upper panel. A new simulated rosewood applique surrounds the instrument cluster. Bucket seats that swivel up to 90° for ease of entry and exit are available in coupe models.

Test-sit, then test-drive the 1976 Malibu Classic model of your choice. Coupe or sedan, we think you'll find that room for six in a car this size has seldom been so livable.

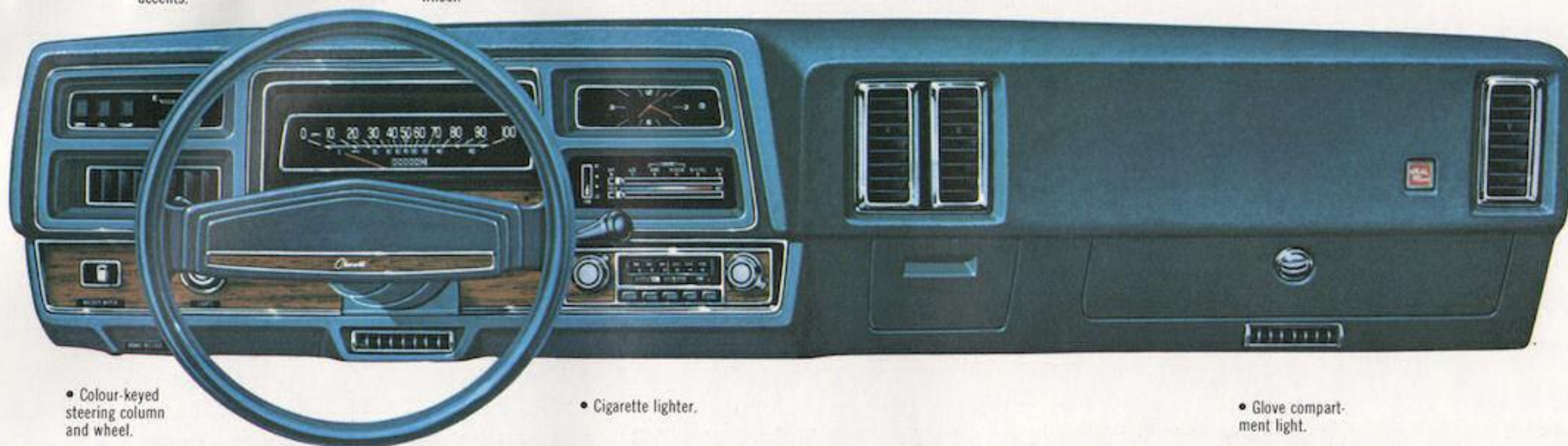


Malibu Classic interior with front fold-down armrest.

- Colour-keyed instrument cluster with woodgrain accents.

- Soft-rim steering wheel.

- Available Four-Season air conditioning and AM/FM stereo radio.



- Colour-keyed steering column and wheel.

- Cigarette lighter.

- Glove compartment light.



Malibu Classic available swivel bucket seat interior.

Malibu. The lowest-priced Chevelle.

The Malibu Coupe and Malibu 4-door Sedan shown on these pages are two more "right size" choices in the 1976 Chevelle line-up.

Both have interior room for six adults and over 15 cubic feet of luggage-carrying capacity in the trunk.

And they both have the built-in value features and new chassis elements you'll find in all 1976 Chevelles. Starting with a "retuning" of the suspension for a soft, luxurious

ride that combines comfort, solidity and "heft".

This year all Chevelle coupes and sedans have a new, smaller base V8, a 305-cubic-inch engine. The new, smaller displacement V8 is designed for greater fuel economy, improved weight characteristics and improved emissions control.

Chevelles have the equipment you'd expect in a car that's the right

size for today. Front disc brakes and steel-belted radial-ply tires are standard on all Chevelles, with power steering, power brakes and Chevrolet's proven Turbo Hydra-matic transmission standard on V8 models.

Malibu coupe and sedan interiors are available in two sport cloth-and-vinyl colour selections or four knit vinyl colours, plus white with black, lime or mahogany accents for the coupe only. All

interiors have wall-to-wall carpeting.

Malibu seats have moulded, full foam cushioning for comfort. Malibu doors feature moulded upper trim panels with burl elm woodgrain vinyl inserts.

Take a test-look, then a test-drive. You'll probably find the 1976 Chevelle Malibu is just the size and price you had in mind.



Malibu Coupe. Shown with available vinyl roof, body side mouldings, Exterior Decor, full wheel covers, deluxe bumpers and white stripe tires.



Malibu 4-Door Sedan. Shown with full wheel covers, bumper guards, deluxe bumpers, body side mouldings, tinted glass, Exterior Decor, remote-control outside mirror and white stripe tires.



Malibu sport cloth and vinyl interior.

Laguna Type S-3. The sportiest Chevelle.

If you're ready to take a different direction, consider the 1976 Laguna Type S-3 Coupe. Styled for action, Laguna Type S-3 makes it clear that Chevelle can get just as sporty as you want it to.

Laguna's stand-out appearance starts with an aerodynamically styled urethane "soft" front-end that tells anyone watching you're not about to go the way everyone else goes. Laguna exterior equipment includes louvered coach windows,

sport mirrors with the driver's side mirror remote-controlled, Rally wheels, steel-belted radial ply tires, colour-keyed bumper impact strips and special S-3 identification on the grille, front fender and rear panel.

And you can step up the excitement even more, with Laguna's available sport roof and sleek body-side striping.

Inside, the tempo continues, with a round-dial instrument panel and woodgrain vinyl accents. The interior also features new knit-vinyl upholstery or available custom cloth

or all-vinyl in a wide selection of colours. Order more sportiness from a smart four-spoke steering wheel, swivel bucket seats, and a centre console with transmission shift lever and storage compartment.

But Laguna's looks only promise the action and excitement to come. Ride and driving characteristics pay the promise off with the excellent steering response of variable-ratio power steering, the quiet solid feel of

added insulation, and stable down-the-road tracking that's the result of an increased front wheel caster angle. There's also Laguna's sport suspension with larger diameter stabilizer bars and revalved shock absorbers, front and rear. Suspension components are computer-selected to match radial ply tire characteristics.

Laguna Type S-3. The only way to really feel the excitement is to test-drive the car.



Laguna Type S-3 Coupe. Shown with available body side mouldings and white stripe tires (background). Shown with available sport roof, body stripes and white stripe tires (foreground).

• Soft-rim steering wheel.

• Electric clock.

• Available Four-Season air conditioning and AM/FM stereo radio.

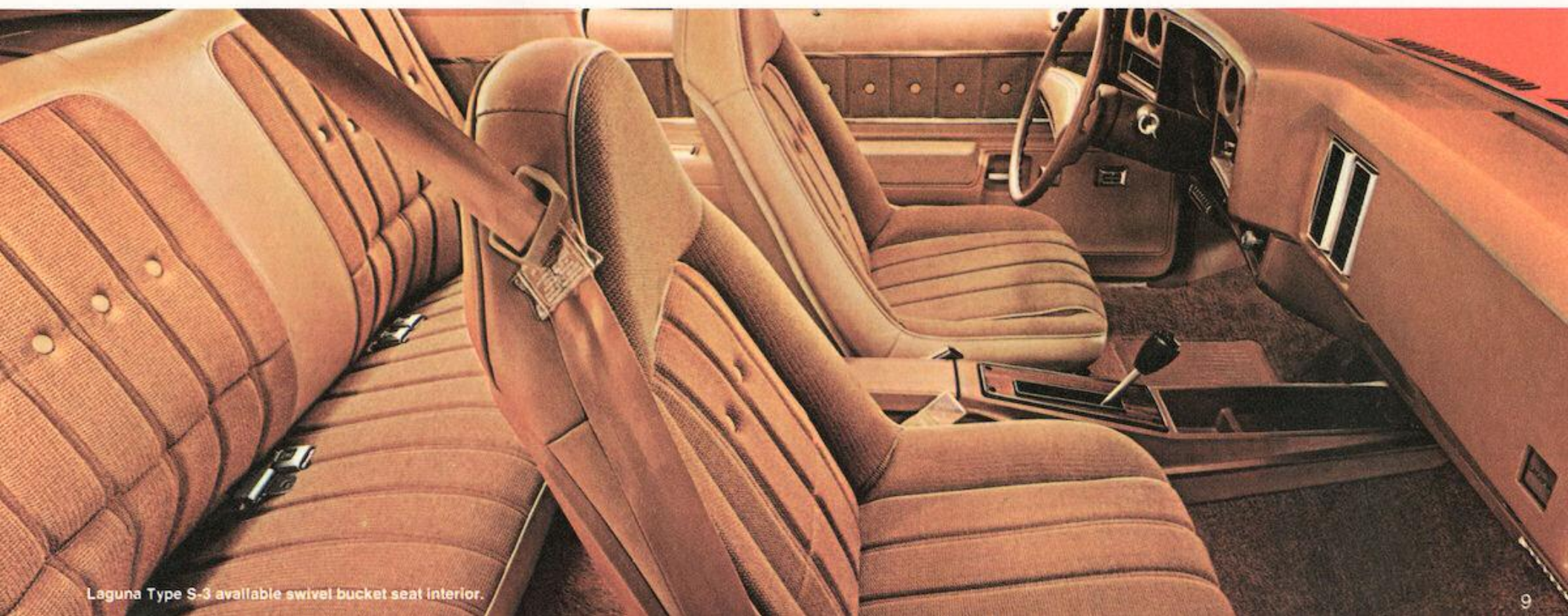


• Colour-keyed instrument cluster with woodgrain accents.

• Colour-keyed steering column and sports-styled steering wheel.

• Cigarette lighter.

• Glove compartment light.



Laguna Type S-3 available swivel bucket seat interior.



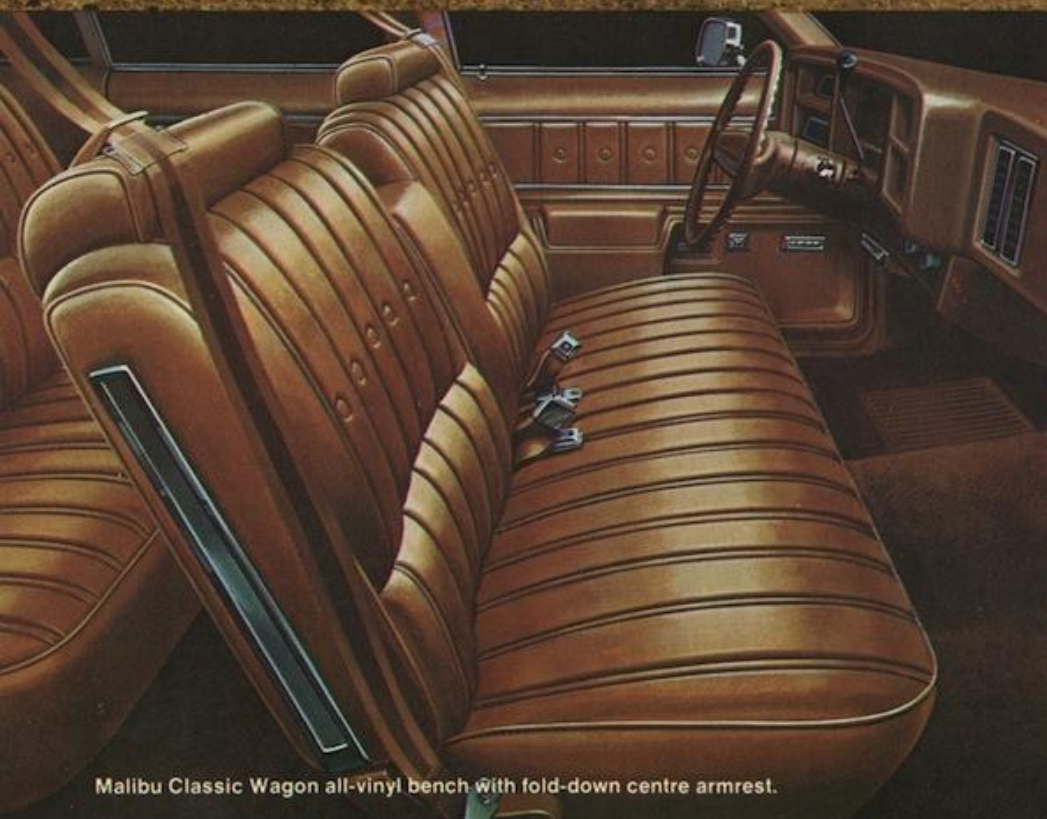
Malibu Classic Estate Wagon. Shown with available luggage rack, rear window air deflector, swing-out rear windows, deluxe bumpers, bumper guards, wheel covers, white stripe tires and tinted glass.



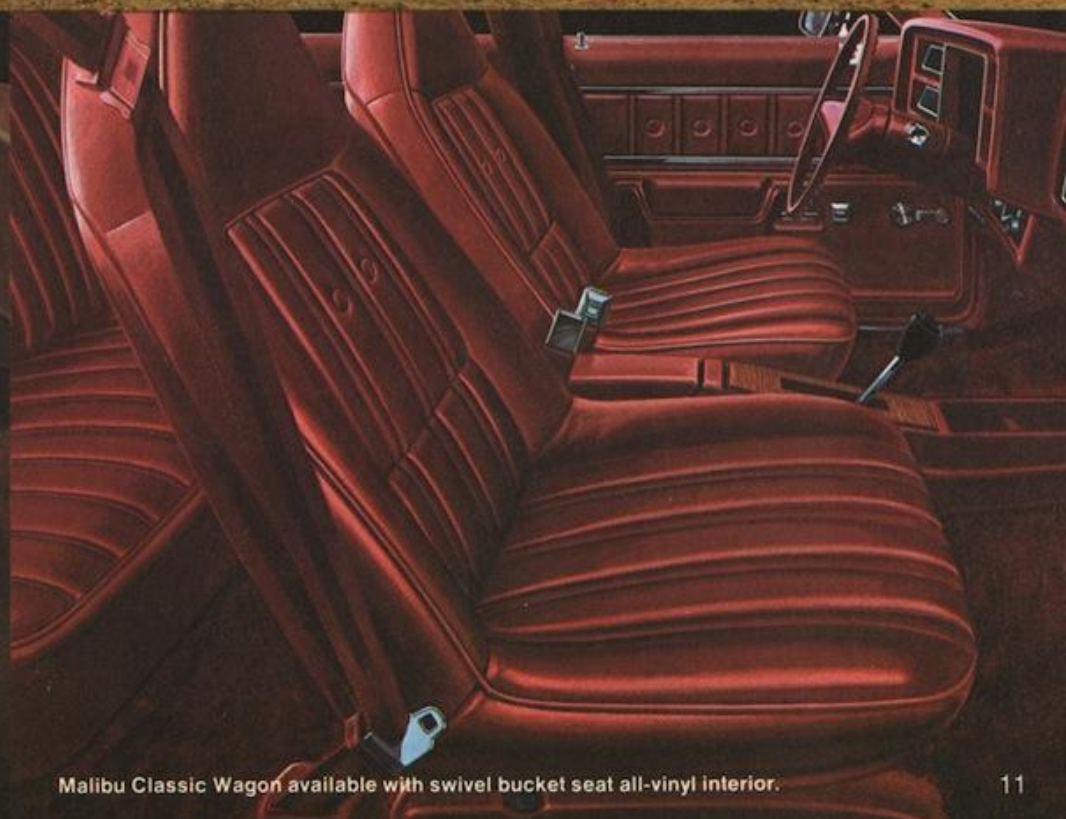
Malibu Classic Wagon. Shown with available luggage rack, rear window air deflector, swing-out rear windows, wheel covers, white stripe tires, deluxe bumpers, bumper guards, body side mouldings and tinted glass.



Malibu Wagon. Shown with available luggage rack, body side moulding, outside remote control mirror, Exterior Decor Package, wheel covers and white stripe tires.



Malibu Classic Wagon all-vinyl bench with fold-down centre armrest.



Malibu Classic Wagon available with swivel bucket seat all-vinyl interior.

Chevelle Wagons. Mid-size wagons that are just right for more and more of today's families.

"Mid-size" in relation to Chevelle wagons may need a word of explanation. They will carry up to eight people in 3-seat versions. They will handle up to 85 cubic feet of cargo. The ride is smooth and comfortable. Yet many families will find the size and price of Chevelle to be just right for their family and their budget.

Chevelle wagon choices are

Malibu, Malibu Classic and Classic Estate. All are available with either two or three seats.

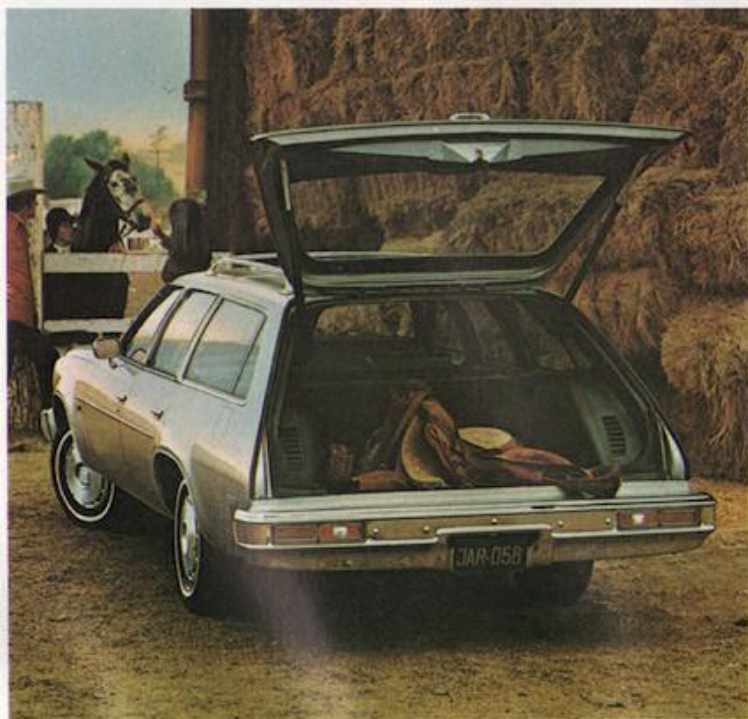
It would be difficult to improve on the striking beauty of the Malibu Classic and Classic Estate models. But for '76, it's been done with a bold new front-end treatment set off by a new diamond pattern in the radiator grille and distinctive stacked dual rectangular headlights.

There is nothing modest about the list of Chevelle wagon standards. Power steering, power brakes, Turbo Hydra-matic transmission and a 350 V8 are included.

Sitting in the front seat of the Classic and Classic Estate models, it would be difficult to tell that you're in a wagon. The full foam bench seat in sport cloth-and-vinyl or all-vinyl upholstery has a well-padded

fold-down centre armrest. The seat, the instrument panel, the deep carpeting, soft headliner and padded vinyl door panels are all carefully colour-keyed.

The basic Malibu interior is highlighted with seats that are full foam construction with washable all-vinyl upholstery. The headliner, moulded door trim and rear quarter trim panels and soft carpeting in the passenger areas are colour-keyed.



Chevelle counterbalanced tailgate.

The liftgate tailgate.

The Chevelle liftgate gets up and out of the way quickly and easily because of its counter-balanced arms. That's an advantage for the passengers who face rearward on 3-seaters. There are also swing-out rear quarter windows back there for added ventilation. (They're standard on 3-seaters, and you can order them on 2-seaters.) The liftgate can only be opened from the instrument panel or from the outside on 3-seat Chevelle wagons (with key only on 2-seat models). Both 2- and 3-seat models include a tailgate-ajar warning light. These extra precautions will make you feel more at ease when carrying kids or cargo.



All-vinyl interior.

1976 El Camino. A car when you need a car. A truck when you need a truck.

For some people, El Camino is a special kind of car. For others, it is a special kind of truck.

But whether you choose El Camino with round headlamps or the El Camino Classic with its new formal grille styling and rectangular headlamps, you'll find that its good looks covers one tough truck underneath.

Air-adjustable shock absorbers.

Standard on El Camino, air-adjustable rear shock absorbers trim the vehicle at any rated load and help prevent "bottoming out" with heavy loads. You simply stop at the nearest service station and pump more air into the rear shocks through a special valve at the rear license plate.

One-handed tailgate.

The El Camino tailgate is so well balanced that you can open and close it with just one hand.

Tough double-wall construction.

El Camino's cargo box is constructed with double walls of steel. That way, the inside can take the dents and nicks without the outside showing them. Doors, hood and roof also have double-wall construction. And every outer fender gets an inner fender to help protect the body against the effects of water, salt and road dirt.

Concealed storage compartment.

Behind the driver's seat is a storage compartment that's ideal for stowing tools or small articles you want to keep out of view. Just move the seat forward and there it is. The spare tire is stowed upright behind the passenger seat.



Cargo tie-downs.

Four rust-resistant tie-downs recessed in the side panels of the load bed help keep your cargo secure.

Cargo box enclosure.

Dealer-installed cargo cover protects your cargo from the weather, or gives you the makings of a mini-camper. Smartly styled to harmonize with El Camino exterior. Available from several manufacturers.

Chassis and suspension.

El Camino rides on Full Coil suspension. Front springs have a rating range of 1,157 to 1,475 pounds each while the rear springs have a rating range of 1,375 to 1,450 pounds each.

El Camino's pickup box is roomy, too: 38 cubic feet. For strength and durability, the floor and tailgate inner wall are ribbed steel. Bright metal mouldings at the top of the box and tailgate help prevent paint chipping during loading and unloading.



Up to 800 pounds of cargo.

What you get.

Every '76 Chevelle includes a host of standard equipment. We've listed much of it here.

- Engineering improvements, introduced with the 1975 Chevelle, are designed to give you cleaner air, overall operating economy, quick starts, faster warm-ups, fewer and simpler tune-ups, and more miles between oil changes and chassis lubes.* These engineering features include High Energy Ignition—up to 35% hotter spark plugs than with conventional ignition which means more responsive ignition performance; Catalytic Converter—takes over most of the emissions control so engines can be tuned for smooth, more responsive performance; Carburetor Outside Air Induction—impressive engine performance because cooler, denser air is fed into the carburetor from outside the car rather than from under the hood; Early Fuel Evaporation—improves performance during warm-up by using exhaust gases to pre-heat incoming fuel/air mixtures before combustion.
- Long intervals between recommended service help save you money as you operate a '76 Chevelle with use of unleaded fuels. (Check complete details in the owner's Manual.)

Extended Service Intervals*		
	1976	Before 1975
Spark plugs	22,500 miles	6000 miles
Engine oil	6 months or 7500 miles	4 months or 6000 miles
Oil filter	First 7500 miles; then every 15,000 miles	First 6000 miles; then every 12,000 miles
Chassis Lubrication	6 months or 7500 miles	4 months or 6000 miles
Transmission Fluid	60,000 miles	24,000 miles

*with use of unleaded fuels

- Full wheel covers
- Body pinstriping
- Bumper impact strips
- Rear quarter window emblem
- Dual note horns

Laguna Type S-3.

- Retractable front end assembly, coloured to match body
- Grid-pattern grille
- Dual body-colour sport mirrors. Remote controlled on driver's side
- Type S-3 identification on body panels
- Louvered rear quarter windows
- 15" x 7" Rally wheels with trim rings
- Colour-keyed bumper impact strips, front and rear
- Special front and rear stabilizer and rear suspension upper control arm bushings for responsive driving characteristics; special front and rear springs and shock absorbers.
- New standard knit cloth-and-vinyl upholstery in light buckskin, dark mahogany, black, blue and white. Also, standard sport cloth-and-vinyl in black and buckskin
- Colour-keyed interior, including instrument cluster with round dials and woodgrain vinyl accents

All Chevelles.

- Distinctive hardtop styling, (Coupes and Sedans)
- Hardtop-design doors with frameless full door-glass styling
- Hide-A-Way windshield wipers
- New exterior colours: light blue metallic*, dark blue metallic, dark green metallic*, firethorn metallic, mahogany metallic, lime green metallic, buckskin*, cream gold*, cream*, medium saddle metallic* and medium red*. Also white, silver and black.

*Not available for Laguna Type S-3

- Nylon cut-pile carpeting, wall-to-wall

Power teams.

Engine	Carburetor Barrels	Net HP Rating	Engine Usage	3-Speed Manual	Turbo Hydra-Matic
250 Six (4.1 litre)†	1	105	Std.	Std.	Avail.*
305 V8 (5.0 litre)†	2	140	Std.	Not avail.	Std.
350 V8 (5.7 litre) ‡	2	145	Avail.	Not avail.	Std.
350 V8 (5.7 litre)**	4	165	Avail.	Not avail.	Std.
400 V8 (6.6 litre)	4	175	Avail.	Not avail.	Std.

*Required with Malibu Classic Sedan

**Coupes and Sedans only

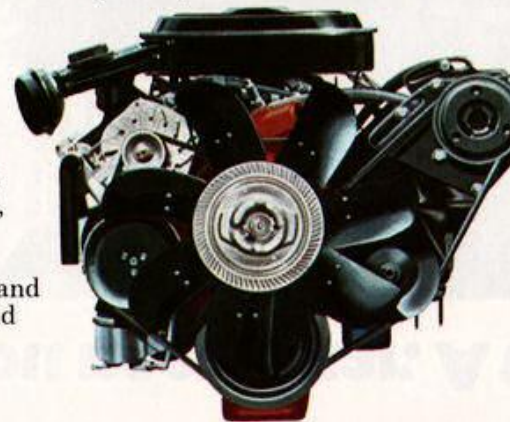
†Not available on Wagons

‡Standard on Wagons

- Flow-through power ventilation system. It keeps outside air circulating inside (with the ignition on), even when the car is stopped and the windows are up.
- Moulded full foam front and rear seat construction
- Illuminated windshield wiper and washer, heater and defroster controls
- Cigarette lighter
- Sound insulation helps reduce noise when driving
- Concealed stowage compartment in cargo area with vinyl-coated floor mat (wagons only).

Engines and transmission.

- New 305 V8 standard engine. Designed for good V8 fuel economy and emission control (except wagons).
- Quiet hydraulic valve lifters



For your safety and security.

Occupant Protection

- Seat belts with pushbutton buckles for all passenger positions
- Two combination seat and inertia reel shoulder belts for driver and right front passenger (with reminder light and buzzer.)
- Energy-absorbing steering column
- Safety steering wheel
- Passenger-guard door locks
- Safety door latches and hinges
- Folding seat back latches
- Energy-absorbing padded instrument panel and front seat back tops
- Contoured windshield header
- Thick-laminate windshield
- Safety armrests
- Cargo-guard luggage compartment
- Contoured roof inner panel

Accident Prevention

- Side marker lights and reflectors
- Parking lights that illuminate with headlights
- Four-way hazard warning flasher
- Lane-change feature in direction signal control
- Back-up lights
- Windshield defrosters, washers and dual-speed wipers
- Wide-view inside day-night rearview mirror (vinyl-edged, shatter-resistant glass and deflecting support).
- Outside left-hand rearview mirror
- Dual master cylinder brake system with warning light
- Starter safety switch
- Dual-action safety hood latch

Anti-Theft

- Ignition-key reminder buzzer
- Steering column lock

The size inside.

(Sedans): Head room—front, 37.9"; rear, 37.2". Hip room—front, 54.7"; rear, 57.8". Shoulder room—front, 59.6"; rear, 58.9". Leg room—front, 42.1"; rear, 36.9". Usable luggage space—15.3 cu.ft.

Exterior/interior features.

Malibu Classic.

- New diamond-pattern grille and stacked rectangular headlights
- Distinctive, stand-up hood ornament
- Bright body sill, roof drip and wheel opening mouldings
- New standard knit cloth-and-vinyl upholstery in black, dark blue and dark mahogany, plus light buckskin for coupe only. Or choose all-vinyl in light buckskin and dark blue, plus black, dark mahogany and white with accents of black, dark blue, dark mahogany or lime, for coupe only.
- Luxurious front seat has fold-down centre armrest
- Colour-keyed instrument cluster with rectangular dials and woodgrain vinyl accents
- Colour-keyed steering column and wheel
- Glove compartment light

Malibu Classic Estate only.

- Vinyl wood-grain exterior panelling

Malibu Classic Estate and Malibu Classic Wagons.

- Sport cloth-and-vinyl upholstery in black or light buckskin. Or choose washable all-vinyl in light buckskin, dark blue, black or dark mahogany.

Malibu.

- New argent-colour rib-patterned grille and single-unit round headlights with bright accents. Parking lights in bumper.
- New standard sport cloth-and-vinyl upholstery in black and light buckskin, or choose all-vinyl upholstery in black, light buckskin, dark blue and dark mahogany, plus white for coupe only.
- Choice of all-vinyl interiors: black or light buckskin for wagons.

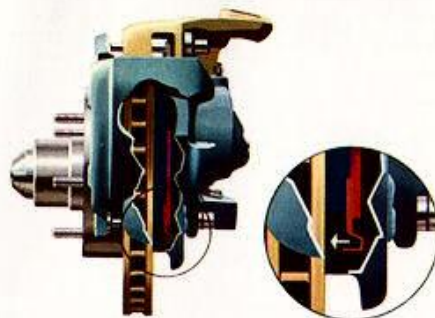
Malibu Classic Landau.

Includes the above features of the Malibu Classic plus the following:

- Landau vinyl roof
- Dual body-colour sport mirrors. Remote controlled on driver's side

Plenty of comfort and convenience.

- Variable-ratio power steering. (Standard on all V8 models and on six-cylinder models with air conditioning)



- Power front disc brakes. Fade-resistant, self-adjusting and with audible wear sensors that tell you when it's time to replace the linings. (Power equipment standard with V8 engines.)

More facts and features.

- Length: Malibu Classic and Malibu Coupes—205.7" Laguna Type S-3 Coupe—207.0" Sedan—209.7" Wagon—215.4"

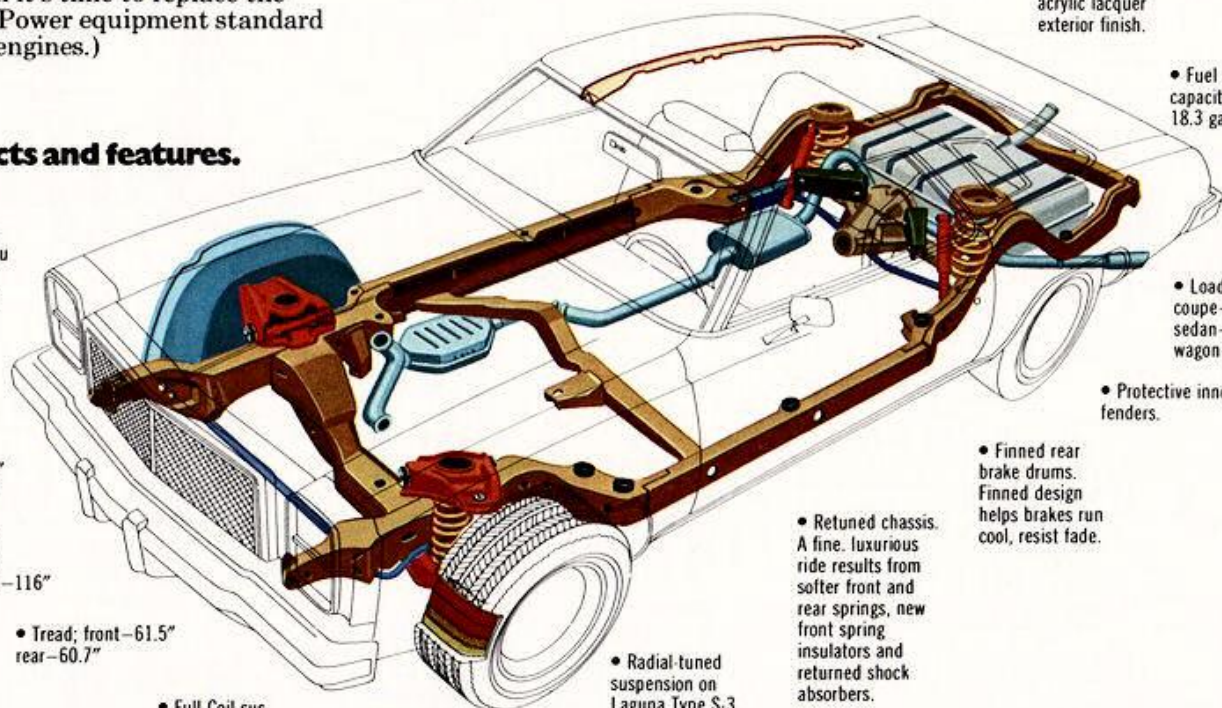
- Front ride stabilizer.
- Width: 76.9" Wagon—76.8"

- Wheelbase: coupe—112" sedan/wagon—116"

- Tread: front—61.5" rear—60.7"

- Full Coil suspension with springs computer-selected to car weight.

- Coolant recovery system helps prevent coolant loss
- Delcotron generator
- New, lighter, high-output battery. Sealed side-terminal design eliminates corrosion build-up on the terminals
- Single exhaust
- Standard 3-Speed transmission is fully synchronized. Manual shift (Six cylinder only).
- Available Turbo Hydra-matic has three forward speed ranges. It does the shifting for you automatically, or it can be manually shifted when desired. Standard on all V8 models.



- GM-specification steel-belted radial ply tires. Offer less rolling resistance for improved fuel economy.

- Radial-tuned suspension on Laguna Type S-3 includes front and rear stabilizer bars, modified shock absorbers and other road-minded components.

- Retuned chassis. A fine, luxurious ride results from softer front and rear springs, new front spring insulators and returned shock absorbers.

- Finned rear brake drums. Finned design helps brakes run cool, resist fade.

- Protective inner fenders.

- Fuel tank capacity: 18.3 gals.

- Magic-Mirror acrylic lacquer exterior finish.

(Coupes): Head room—front, 37.2"; rear, 36.7". Hip room—front, 54.8"; rear, 52.7". Shoulder room—front, 59.6"; rear, 58.0". Leg room—front, 42.1"; rear, 32.9". Usable luggage space—15.3 cu. ft.

(Wagons): Head room—front, 38.5"; 2nd seat, 39.0"; 3rd seat, 37.3". Hip room—front, 54.7"; 2nd seat, 55.1"; 3rd seat, 36.5". Shoulder room—front, 59.6"; 2nd seat, 58.9"; 3rd seat, 42.7". Leg room—front, 42.1"; 2nd seat, 33.0"; 3rd seat, 27.8".

What you can add.

Chevelle offers a wide selection of available options to personalize your new car. Availability often depends on the model and other equipment selected. Your Chevrolet dealer can answer any questions.

For comfort and convenience.

- Swivel bucket seats. Swing around to fully face doors to simplify getting in and out. Available for Malibu Classic Coupes including Landau and wagons. (See Custom Interior for swivel seats in Laguna Type S-3). All-vinyl in black, dark blue, light buckskin or dark mahogany; white all-vinyl with carpeting and other accents in black, dark blue, dark mahogany and lime. Also available in knit cloth-and-vinyl in light buckskin and dark mahogany.
- Power 6-way front seat
- Power door lock system

- New lighted visor vanity mirror



- Visor vanity mirror
- Auxiliary Lighting Group. Includes ashtray light, glove compartment light, luggage compartment and courtesy lights, mirror map light, underhood light, "headlights on" reminder buzzer.
- Map light
- Remote-control outside mirror. For left- and right-front doors. (Not available with Malibu Classic Landau or Laguna Type S-3 Coupes)
- Twin sport mirrors. Both left- and right-front door mirrors are remote control; body coloured.
- Sport mirrors. Body-colour remote control mirror for left-front door, manually operated for right-front door. (Standard on Malibu Classic Landau and Laguna Type S-3 Coupes)
- Radios and tape players are Delco designed specifically for your new Chevelle. Available in a variety of combinations to handle any taste in listening. There's an AM radio, AM/FM radio, AM/FM stereo radio, and an eight-track stereo tape system with either AM or AM/FM stereo radio. Factory-installed radios include windshield antennas.
- Rear seat speaker
- Stowaway space-saving tire

For appearance.

- New Laguna Type S-3 sport roof. Touring style vinyl cover in black, white, dark blue, silver, dark firethorn, dark mahogany and light buckskin, depending on exterior colour.
- Padded vinyl roof cover. In black or white with any exterior colour, as

- well as dark blue, light buckskin, dark mahogany, dark firethorn, or silver, depending on exterior colour. (Standard on Malibu Classic Landau, not available on Laguna Type S-3.)
- New Malibu Classic Landau paint stripes, front and rear. In black, white, bright blue, red and yellow-orange, depending on exterior colour.
- Laguna Type S-3 body paint stripes. In black, white, gold and dark firethorn depending on exterior colour.
- Custom Interior. (Available for Laguna Type S-3 only). Bench style or swivel bucket seats in deluxe knit-cloth-and-vinyl in light buckskin, dark mahogany, black (bench only) or blue (bench only); or all-vinyl in light buckskin, dark mahogany, white, black or blue.
- Deluxe colour-keyed seat and shoulder belts
- Exterior decor. Consists of wheel opening mouldings and roof drip moulding. (Available for Malibu only)
- Deluxe bumpers, front and rear. Full-width resilient impact strips. (Standard on Malibu Classic Landau and Laguna Type S-3)
- Bumper guards, front and rear. (Front only standard on Laguna Type S-3, rear not available)
- Sport steering wheel
- Floor mats, front and rear
- Body side mouldings. Include protective vinyl insert
- Aluminum door edge guards
- White stripe, GM-Specification steel-belted radial ply tires
- Full wheel covers. (Standard on Malibu Classic Landau, not available on Laguna Type S-3)
- Rally wheels. (Standard on Laguna Type S-3)
- Wire wheel covers. (Not available on Laguna Type S-3)

Mechanical items.

- Econominder Gauge Package. Tells when car is being driven in most economical range. Includes water temperature gauge and voltmeter.
- Cruise-Master speed control. Automatically maintains the speed selected by driver. Stepping on brake disengages control.
- Variable-ratio power steering. (Standard with V8 engines)
- Power brakes. (Standard with V8 engines)
- High altitude rear axle
- Highway rear axle
- Positraction. (For excellent rear wheel traction)
- Intermittent windshield wiper system. Ideal for use in mist or light rain when continual wiper operation is not required
- Heavy-duty suspension, front and rear. Particularly useful for trailering.
- Radial-tuned suspension. (Standard on Laguna Type S-3, available with V8 engines only.) Features front and rear stabilizer bars, plus special front and rear shock absorbers, to complement steel-belted radial ply tires
- Sport suspension. Includes front and rear stabilizer bars, plus spring rates and shock absorber valving calibrated for roadability and a somewhat firmer ride.
- Heavy-duty battery
- 61-amp Delcotron generator
- Heavy-duty radiator

The illustrations or descriptions in this catalogue do not necessarily show standard colours, materials and equipment. General Motors of Canada Limited reserves the right to make changes at any time without notice, in prices, colours, materials, equipment, specifications and models, and also to discontinue models. This right may be exercised without incurring any responsibility with regard to cars and trucks previously sold.
GENERAL MOTORS OF CANADA LIMITED,
OSHAWA, ONTARIO

