

# 1975 CHEVELLE

## THE MID-SIZE CHEVROLET



The great advantage of the 1975 Chevelle is that it doesn't offer you just one great advantage. It offers you a combination of good things.

Mid-size. Mid-price. A new Chevrolet Efficiency System. Comfort. Easy handling. Room for six adults. And a strong reputation for value.

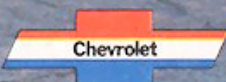
There's a wide choice of Chevelles for 1975, offered in three basic series. The distinctive Malibu Classic series. The Malibu series, again the least expensive Chevelles to buy. And the sporty Laguna Type S-3.

We hope you'll find the information we have about them in this catalog

helpful. We want your 1975 Chevelle to be the most satisfying new car you ever brought home.



CHEVROLET MAKES SENSE FOR AMERICA.



This may be the most satisfying new car you ever brought home.

Malibu Classic is our most distinguished Chevelle.

Coupe or sedan, it gives you all the basic advantages of mid-size

## MALIBU CLASSIC

mentioned on the cover, with a character that is noticeably clean and poised and unpretentious.

1975 exterior refinements include new styling, both front and rear. Notice the new, vertical lines of the grille, and the new, bright trim around the headlights. The rectangular taillights are also new, as well as the brushed chrome panel between the taillights, and the straight line design of the rear deck lid.

The coupe, with distinctive coach windows, can also be ordered as a Landau model (shown on cover) with vinyl roof, full wheel covers, white stripe tires, color-keyed body striping and dual sport mirrors, all standard.

Steel-belted radial ply tires are standard on all 1975 Chevelles, with variable-ratio power steering standard on all models with V8 engines.

And now every Chevelle is equipped with the new Chevrolet Efficiency System, a series of improvements designed to let your 1975 Chevelle start quicker, run smoother and cleaner, deliver higher gas mileage, and require fewer recommended

maintenance stops than previous Chevelles.

The new Malibu Classic.

If you want the advantages of 1975 mid-size Chevelle efficiency in a package of genuine comfort and classic character, this will be the most satisfying Chevelle for you.



Left and above: Malibu Classic Coupe.

Shown on cover: Malibu Classic Landau Coupe.



# THE CLASSIC ENVIRONMENT

Fine automotive interiors are far more than simple carrying places for driver and passengers.

They're the heart of your driving enjoyment. They satisfy your taste. They comfort you. They make your drive something personal and pleasurable.

Malibu Classic offers you a fine automotive interior.

Look. It is comfortable, but not opulent. It is stylish, but not gaudy.

New insulation and sound deadening materials add to the peace and quiet of your ride.

Malibu Classic seats are molded full foam, four inches thick, with a fold-down center armrest up front.

Coverings include any of a new selection of quality fabrics or vinyls.

Carpeting is deep cut-pile. Wood-grain vinyl accents the instrument cluster. The door paneling is distinctively designed and tastefully appointed.

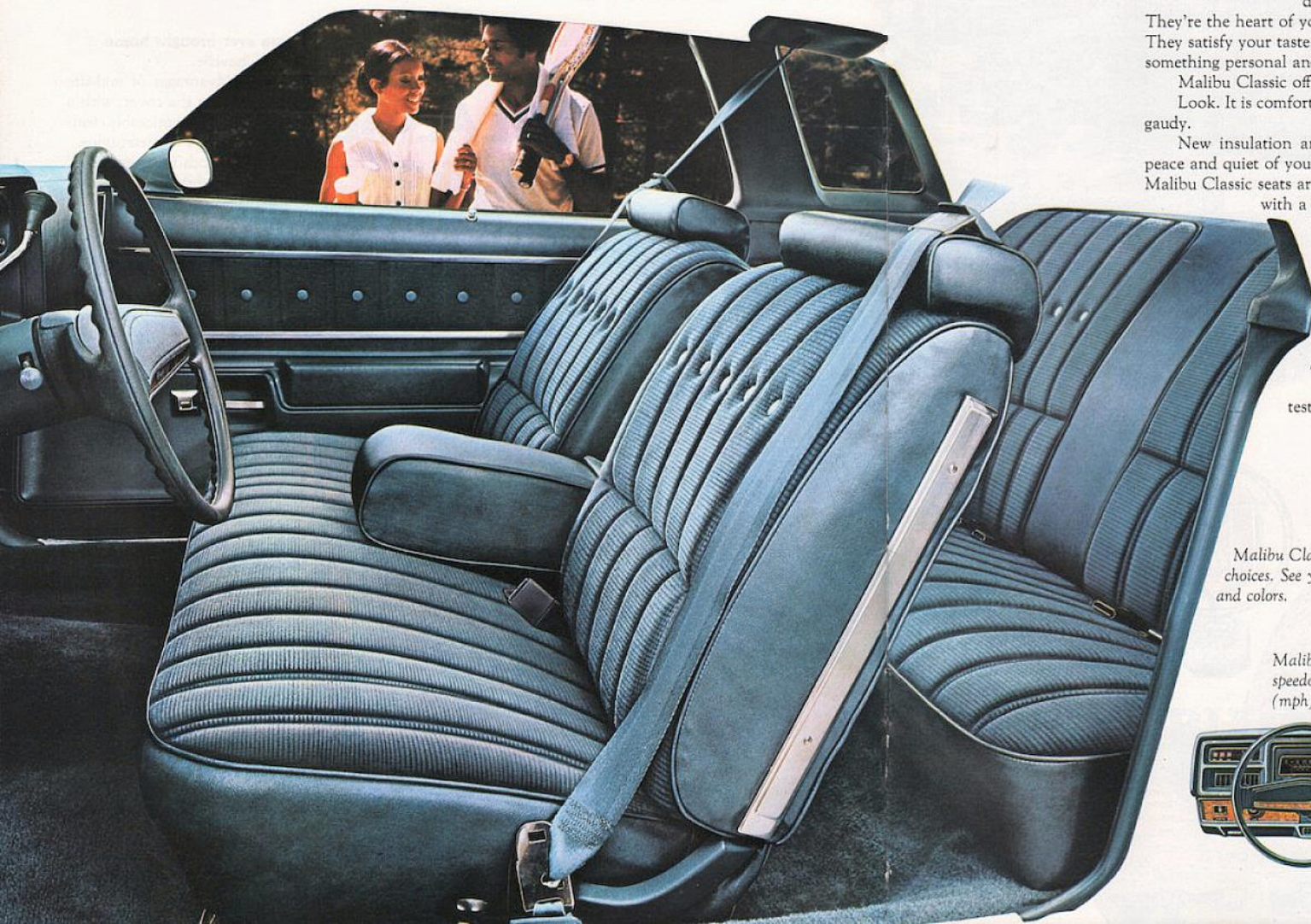
And there is room in this Classic environment for six adults.

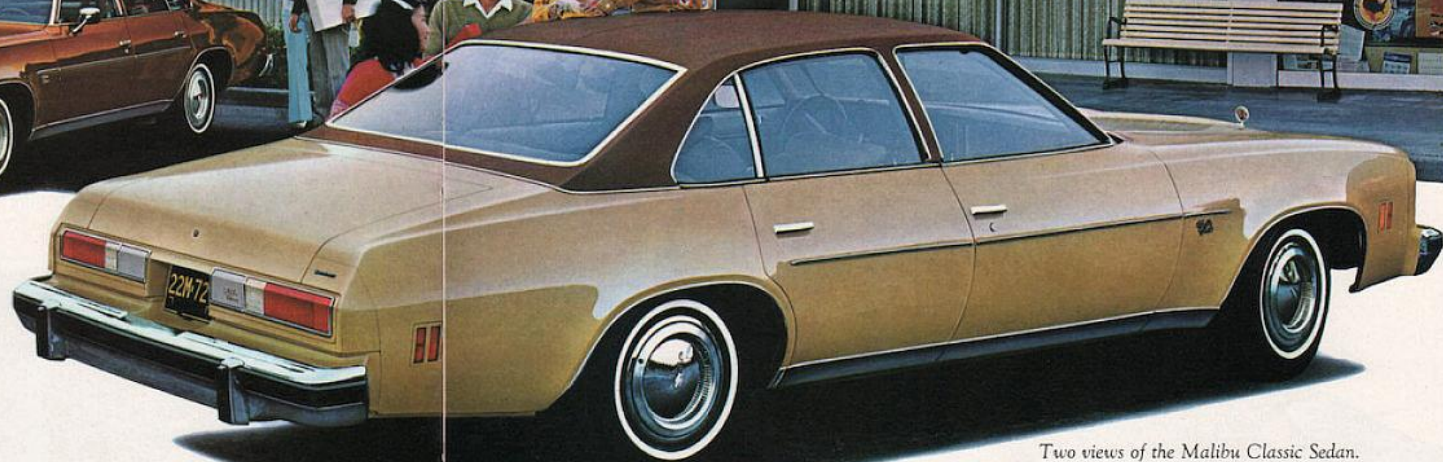
If you haven't already done so, test drive a Malibu Classic interior.

See how satisfying it can be to surround your family with good things.

*Malibu Classic interior. Shown are representations of color choices. See your Chevrolet dealer for actual fabric samples and colors.*

*Malibu Classic instrument panel, with new speedometer calibrated in both miles per hour (mph) and kilometers per hour (kph).*





Two views of the Malibu Classic Sedan.

Malibu Classic Sedan seating space in available all-vinyl.



This will be the most satisfying Chevelle for families who want all of the Malibu Classic advantages with the added convenience of four-door design.

This added convenience involves more than easy in and out. The six-window design provides excellent visibility. And the interior room provides comfortable seating for six adults.

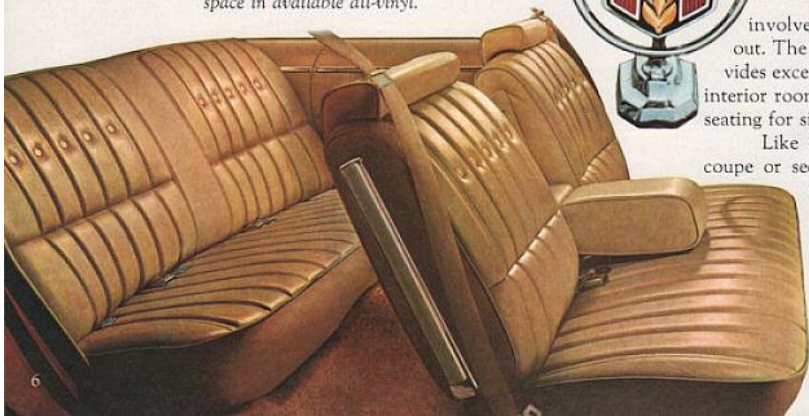
Like every 1975 Chevelle—coupe or sedan—it also gives you the benefits of the new Chevrolet Efficiency System described on page 12.

You can choose some significant new available options this year, as well. Cruise-Master speed control helps you hold your speed at efficient levels. And a new Econominder gauge tells you when you're using more gas than necessary.

Engine selection runs from the standard 350 V8 to an available 400 V8 or 454 V8 for trailering or other special power requirements.

The mid-size, mid-price family sedan: Malibu Classic. Look at it as room you can handle nicely.

## MALIBU CLASSIC SEDAN





Left: Malibu Sedan.  
Right: Malibu Coupe.

The most popular name in mid-size history . . . again the least expensive Chevelle to buy.

There are already more Chevelle Malibus on the road than any other mid-size car (which should tell you something worth remembering about Chevelle and owner satisfaction).

And for 1975, we've again added the lowest of all Chevelle prices to Malibu's list of basic advantages: mid-size, efficiency, comfort, room for six, easy handling and reputation for value.

## MALIBU

Inside, Malibu treats you to molded, full foam seating covered with rich new pattern cloths or vinyls.

New Malibu front end styling includes a handsome new grille: grid-patterned, with a clean, vertical look. New rear styling features rectangular taillights

flush with the body surface, plus our new Chevelle straight line deck lid.

We've also made engineering changes—adjusting the suspension and steering geometry, for example—to further refine Malibu handling characteristics. Variable-ratio power steering is now standard on V8 models. Steel-belted radial ply tires are now standard on all models.

And the new Chevrolet Efficiency System is designed to let the 1975 Malibu run more efficiently, more economically, with higher gas mileage and extended service intervals for oil, oil filter, spark plugs, chassis lubrication and transmission fluid. You see, we want Malibu to be more than a satisfying car to buy. We want it to be a satisfying car to maintain.



Malibu interior  
in available mixed-  
tone vinyl.

# LAGUNA III TYPE S-3

A brand-new look for the sportiest Chevelle of all.

Going into motion in a new Chevelle has always been a kind of outdoor sport. But the sport has never looked like this before; never this fresh, never this audacious.

The new Laguna Type S-3 is aerodynamically styled. The front end is clean and young and rakish with a urethane covering that helps resist minor dents. The Rally wheels are standard. So are the louvered coach windows and dual sport mirrors.

For quick, responsive handling, Laguna gives you standard steel-belted radials, variable-ratio power steering, Full Coil radial-tuned suspension with front and rear stabilizers and special shocks.

For efficiency, it gives you all the advantages of the Chevrolet Efficiency System.

For your friends, it gives you room. All the room and comfort of mid-size.

And for your own personal reasons, it gives you a wide choice of available sport options. Items like swivel bucket seats and body striping. Enough to personalize your new Laguna from top to bottom.

Some of these options are shown here. A lot more are shown on pages 14 and 15.

## LAGUNA TYPE S-3

*Laguna Type S-3 Coupe with available vinyl sport roof.*



Standard Laguna full bench seat shown in distinctive sport cloth. Also available in all-vinyl trim.



Laguna instrument panel shown with available 4-spoke sport steering wheel and Econominder Gauge Package, which includes clock, engine temperature gauge and voltmeter.



Laguna Type S-3 Coupe with available vinyl sport roof and body striping.



# MID-SIZE CHEVELLES:

## MAKING MORE SENSE THAN EVER

More Chevelles have been sold over the years than any other mid-size car. That says something about Chevelle's reputation for value. And now we're adding to that value. The new Chevrolet Efficiency System is a series of improvements designed to work together to make every 1975 Chevelle run leaner (with more overall economy), run cleaner (with purer exhaust emissions) and save you money every mile (with more everyday operating efficiency, as well as fewer recommended maintenance stops than previous Chevelles). Available new fuel-saving options can help increase your Chevelle's efficiency even more.

### NEW CHEVROLET EFFICIENCY SYSTEM

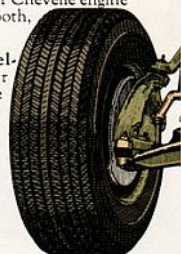
**Extended service intervals.** Compare 1974 figures with those we recommend for 1975. (Check Owner's Manual for details.) Our new Efficiency System not only saves you money, it saves you valuable time.

Extended Service Intervals		
	1974	1975
Spark plugs	6000 miles	22,500 miles
Engine oil	4 months or 6000 miles	6 months or 7500 miles
Oil filter	First 6000 miles; every 12,000 miles thereafter	First 7500 miles; every 15,000 miles thereafter
Chassis lubrication	4 months or 6000 miles	6 months or 7500 miles
Transmission fluid	24,000 miles	30,000 miles



**GM-developed catalytic converter.** GM's catalytic converter development program included more than 1,300 vehicles, going over 27 million miles. The converter chemically changes emissions (hydrocarbons and carbon monoxide) to harmless water vapor and carbon dioxide. Moreover, by moving most of the job of emission control to the converter, it lets your Chevelle engine get back to the job it does best: delivering smooth, efficient performance.

**GM-Specification steel-belted radials.** Their lower rolling resistance gives you longer tire service and improved gas mileage. They also give you improved traction on wet and snowy roads, and stiff resistance to cuts.



**High Energy Ignition (HEI).** Now standard on every Chevelle as part of the new Chevrolet Efficiency System, HEI delivers higher voltage to spark plugs for quicker starts in cold or wet weather, more positive ignition at all engine speeds, and longer spark plug life. And HEI has no breaker points or ignition condenser to maintain.



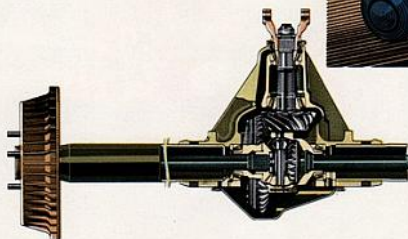
**Early Fuel Evaporation.** EFE directs exhaust gases back around the inlet manifold during warm-up. This is designed to give you a smoother warm-up period, and a briefer, more efficient one.

### AVAILABLE FUEL-SAVING OPTIONS

**Cruise-Master speed control.** Set your Cruise-Master at the speed you want to maintain and it will hold that speed automatically. To disengage Cruise-Master, simply tap on the brake.



**Highway Axle Ratio.** Our new 2.56:1 axle ratio. Available with V8 engine. Contributes to improved fuel economy when driving is predominantly on open highways.



**Econominder Gauge.** It shows you when you're using more gas than necessary. Available in a package which includes clock, engine temperature gauge and voltmeter.



# ALL CHEVELLES HAVE:

### Mechanical features.

Variable-ratio power steering (standard on all V8 models and six-cylinder models with air conditioning) • Full Coil suspension • Springs selected by computer to match each individual car's weight • Front disc brakes with audible lining wear sensor on ventilated discs • Front ride stabilizer • Visual wear indicator on lower control arm ball joint.

### Durability features.

Retracting bumper system with hydraulic cylinders, front and rear • All-welded Body by Fisher • Magic-Mirror acrylic lacquer finish • Double-panel roof, doors, hood and deck lid • Inner fenders front and rear for corrosion resistance • Non-corrosive rear-end panel • Newly calibrated shock absorbers • Sealed side-terminal Energizer battery for corrosion-resistance.

### Interior comfort features.

Molded full foam seating, front and rear • Cut-pile nylon carpeting • Flow-through power ventilation with large vent-ports to provide a continuous flow of outside air even while car is standing still with the windows up • Engine temperature sensor to delay low-speed blower operation until the engine is warmed up • Armrests front and rear.

### Interior convenience features.

Foot-operated parking brake • Illuminated windshield wiper and washer, heater and defroster controls • Cigarette lighter • Speedometer calibrated in miles per hour (mph) and kilometers per hour (kph).

### Occupant protection features.

Seat belts with pushbutton buckles for all passenger positions • Two combination seat and shoulder belts for driver and right front passenger (with belt reminder and inertia reel) • Two front seat head restraints • Energy-absorbing steering column • Passenger-guard door locks • Safety door latches and hinges • Folding seat back latches • Energy-absorbing padded instrument panel and front seat back tops • Contoured windshield header • Thick-laminate windshield • Safety armrests • Safety steering wheel • Cargo-guard luggage compartment • Side-guard beams • Contoured roof inner panel.

### Accident prevention features.

Side marker lights and reflectors (front side marker lights flash with direction signal) • Parking lights that illuminate with headlights • Four-way hazard warning flasher • Back-up lights • Lane-change feature in direction signal control • Windshield defrosters, washers and dual-speed wipers • Wide-view inside day/night mirror (vinyl-edged, shatter-resistant glass and deflecting support) • Outside rearview mirror • Dual master cylinder rear brake system with warning light • Starter safety switch • Front disc brakes with audible wear indicators • Self-adjusting brakes • Dual-action safety hood latch.

### Anti-theft features.

Anti-theft ignition key reminder buzzer • Anti-theft steering column lock • Inside hood latch release.

### Standard with the Malibu Classic.

New headlight bezels • Bright body sill, roof drip and wheel opening moldings • Bright accented rectangular taillights • Brushed chrome between taillights • Luxurious front seat with fold-down center armrest • Color-keyed instrument cluster with rectangular dials and wood-grain vinyl accents • Color-keyed steering column and wheel • Luxury seat and upper door panel trim • Glove compartment light.

### Standard with Malibu Classic Landau.

All Malibu Classic standard features, plus Landau vinyl roof, dual sport mirrors (remote-controlled on driver's side), full wheel covers, body pinstripping, white stripe tires, bumper impact strips.

### Standard with Laguna Type S-3.

Retractable front end assembly, colored

to match the body • Special front stabilizer, rear stabilizer and rear suspension upper control arm bushings for responsive handling characteristics • Special front and rear springs and special shock absorbers • Color-keyed interior, including instrument cluster with round dials and wood-grain vinyl accents • Type S-3 identification on instrument panel and door panels • Dual sport mirrors (driver's side remote-controlled) • Bumper impact strips, front and rear.

### Dimensions and capacities—all models.

Wheelbase—112" coupe; 116" sedan. Length overall—205.3" Malibu Classic and Malibu Coupes; 207.3" Laguna Type S-3 Coupe; 209.2" sedan. Width overall—76.6" coupe and sedan. Height, loaded—53.1" coupe; 53.8" sedan. Tread, front—61.5" coupe and sedan. Tread, rear—60.7" coupe and sedan. Head room, front—37.7" coupe; 38.3" sedan. Head room, rear—37.0" coupe; 37.5" sedan. Hip room, front—54.8" coupe; 54.7" sedan. Hip room, rear—52.7" coupe; 52.8" sedan. Shoulder room, front—59.6" coupe and sedan. Shoulder room, rear—58.0" coupe; 58.9" sedan. Leg room, front—42.4" coupe and sedan. Leg room, rear—32.9" coupe; 37.0" sedan. Luggage space (cu. ft.)—15.3 coupe and sedan. Fuel tank capacity—22 gal.

### Engine features.

Standard 350-cubic-inch V8 engine or standard 250-cubic-inch V6, with extensive new refinements resulting in increased performance, improved fuel economy, smoother and more positive engine response and drivability • All engines designed to run on unleaded fuel • New fuel filler neck design to accommodate smaller fuel nozzles of no-lead gasoline pumps.

### POWER TEAMS

Engine	Horsepower	Engine Usage	3-Speed	Turbo Hydra-matic
250-1 barrel Six*	105	Std. (1)	Std.	A
350-2 barrel V8	145	Std. (2)	NA	A
350-4 barrel V8	155	A (4)	Std.	A
400-4 barrel V8	175	A (1)	NA	A
454-4 barrel V8 (3)	215	A (2)	NA	A

\* All models except Malibu Classic Sedan and Laguna Type S-3  
(1) California Emission Equipment required in State of California  
(2) Not available in California (3) Not available on Laguna  
(4) Available only for sale and/or registration in California  
A—Available NA—Not Available

# ALL CHEVELLES CAN HAVE:

The 1975 Chevelle offers you a wide choice of available Options and Custom Features, some of which we've listed here. Your Chevrolet dealer can answer your questions concerning availability and details of specific items.



**Rear window defogger.** It works just like your front window defogger. Flip a switch and a direct flow of warm air clears away mist or rainy day steam-up.

**Intermittent windshield wiper system.** Ideal for use in mist or light rain. Pulse system automatically provides a single wiper stroke at adjustable time intervals, from one to ten seconds.



**Radial-tuned suspension.** Specially tuned suspension system with rear stabilizer for improved handling characteristics and steering response on V8 models. Standard on Laguna Type S-3.

**Sports suspension.** Radial-tuned suspension with heavy-duty front and rear stabilizers and special shock absorbers is included with GR70 and HR70 tires available on V8 models.

**Heavy-duty suspension system.** Includes heavy-duty shock absorbers and higher rate springs for trailering and heavy loads.



**Special instrumentation.** Includes tachometer, voltmeter, temperature gauge, clock.



**Wheels/wheel covers.** Left: Rally wheels. Clean and bold and aggressive, with bright trim rings (standard on Laguna Type S-3). Top: full wheel covers. Our most popular wheel covers (similar design standard on Malibu Classic Landau). Right: Simulated wire wheel covers, so carefully detailed that they could be mistaken for actual wire wheels.



**Power Sky Roof.** Touch a button and your roof slides quickly open to the sun and the air. Another touch brings the all-metal roof snugly back into position. (Coupes only.)



**Comfortilt steering wheel.** Flip a lever and your steering wheel pivots up or down to the precise angle you find most comfortable. Release the lever and wheel is secured.



**Remote-control dual mirrors.** Now even your right-hand mirror can be adjusted by remote control. Shown here: remote-control right-hand sport mirror in matching body color.



**Six-way power seat** (above left). Control height, distance from the steering wheel and seating angle with the touch of a button.

**Power door locks** (above center). Lock and unlock all doors from either the driver's seat or front passenger seat, quickly, conveniently.

**Power windows** (above right). Operate each window from driver's seat. Separate buttons at operating windows for passengers.

**Other available equipment:** Cruise-Master speed control

- Econominder Gauge Package
- Four-Season air conditioning
- 4-spoke sport steering wheel
- Soft-Ray tinted glass
- Power brakes
- Power steering for six-cylinder models
- Electric clock
- Deluxe bumpers with resilient impact strips (standard on Malibu Classic Landau and Laguna Type S-3)
- AM/FM radio
- AM/FM/Stereo radio
- AM radio
- Rear seat speaker
- Custom Deluxe seat belts
- Color-keyed floor mats
- Auxiliary Lighting Group, including (depending on model) ashtray, glove compartment, luggage compartment and courtesy lights, mirror map light and underhood light plus "headlights-on" reminder buzzer
- Visor vanity mirror
- Laguna sport roof with touring style vinyl cover
- Laguna body striping
- New stowaway space-saving spare tire.

**Swivel bucket seats.** Deep and contoured, for firm support. They swivel up to 90° for easy in and out. They adjust up to 5' forward and backward. Seats are shown

here with center console (including shift lever and handy compartment). Swivel bucket

seats available on coupes only. Console available only on bucket seat V8 coupe models with Turbo Hydra-matic transmission.



**Stereo tape system.** Available with AM or AM/FM/Stereo radio. With any factory-installed radio, antenna is mounted in the windshield, so it's well protected against corrosion and breakage.

# PUT TOGETHER YOUR OWN CHEVELLE WITH THIS EASY CHECK LIST



☐ Malibu Classic  
Landau Coupe



☐ Malibu Classic  
Coupe



☐ Malibu Classic  
Sedan



☐ Laguna Type S-3  
Coupe



☐ Malibu Coupe



☐ Malibu Sedan

## COLORS

**Malibu Classic and Malibu:** ☐ Black ☐ Bright Blue Metallic ☐ Dark Red Metallic ☐ Medium Orange Metallic ☐ Silver ☐ Antique White ☐ Cream Beige ☐ Medium Blue ☐ Midnight Blue Metallic ☐ Sandstone ☐ Medium Green ☐ Dark Green Metallic ☐ Light Gray ☐ Medium Red ☐ Dark Brown Metallic ☐ Light Saddle Metallic.

**Laguna Type S-3:** ☐ Black ☐ Bright Blue Metallic ☐ Dark Red Metallic ☐ Medium Orange Metallic ☐ Silver ☐ Antique White.

**Two-tone combinations available (Malibu Classic and Malibu):** Antique White upper, plus ☐ Medium Blue ☐ Midnight Blue Metallic ☐ Bright Blue Metallic ☐ Sandstone ☐ Dark Green Metallic ☐ Medium Green ☐ Dark Brown Metallic ☐ Medium Orange Metallic ☐ Dark Red Metallic.

**Laguna Type S-3 body striping available:** ☐ Red ☐ Black ☐ Silver ☐ White. (Color-keyed to interior/exterior and vinyl roof color combinations.)

**Vinyl roof covers available (Malibu Classic and Malibu):** ☐ Black ☐ White ☐ Dark Blue ☐ Medium Green ☐ Dark Red ☐ Dark Brown ☐ Silver Metallic ☐ Sandstone ☐ Red.

**Laguna Type S-3 sport roof covers available:** ☐ White ☐ Dark Red ☐ Black ☐ Silver Metallic.

## INTERIORS

**Malibu Classic:** Ribbed cloth in ☐ Black ☐ Blue ☐ Green ☐ Graystone ☐ Red. All-vinyl in ☐ Black ☐ Blue ☐ Sandstone ☐ Saddle. **Swivel bucket seats available** (coupes only): Cloth in ☐ Black ☐ Red. All-vinyl in ☐ Black ☐ Blue ☐ Sandstone ☐ Saddle. **Malibu:** Pattern cloth in ☐ Black ☐ Blue. All-vinyl in ☐ Black ☐ Green ☐ Sandstone ☐ Blue. **Swivel bucket seats available** (coupe only): All-vinyl in ☐ Black ☐ Sandstone. **Laguna Type S-3:** Sport cloth or all-vinyl in ☐ Black ☐ Red ☐ Saddle. Also ☐ White vinyl or black and white sport cloth with carpeting and other accents in ☐ Black ☐ Red. **Swivel bucket seats available:** Sport cloth or all-vinyl in ☐ Black ☐ Red ☐ Saddle.

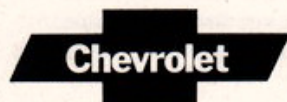
## POWER TEAMS

☐ 250 Six ☐ 350 V8 ☐ 400 V8 ☐ 454 V8 ☐ 3-Speed manual (standard with 250 Six and 350 V8) ☐ Turbo Hydra-matic ☐ Positraction rear axle ☐ Highway Axle Ratio ☐ High-Altitude Axle Ratio.

## POPULAR AVAILABLE OPTIONS

☐ Econominder Gauge Package ☐ Rear window defogger ☐ Power Sky Roof ☐ Intermittent windshield wiper system ☐ Radial-tuned suspension system (standard on Laguna Type S-3). ☐ AM/FM/Stereo radio ☐ Special instrumentation ☐ Rally wheels ☐ Full wheel covers ☐ Deluxe bumpers ☐ Comfortilt steering wheel ☐ Remote-control mirrors ☐ Four-Season air conditioning ☐ White lettered or white stripe GM-Specification steel-belted radial ply tires ☐ 4-spoke sport steering wheel ☐ Power brakes ☐ Power steering (standard on V8 models).

Malibu Classic and Malibu also come in exciting station wagon models, in addition to the passenger car models described in this catalog. For information on all of Chevrolet's wide range of wagons, see your dealer for the 1975 Chevrolet station wagon catalog.



All illustrations and specifications contained in this literature are based on the latest product information available at the time of publication approval. The right is reserved to make changes at any time without notice in prices, colors, materials, equipment, specifications and models, and to discontinue models. Chevrolet Motor Division, General Motors Corporation, Detroit, Michigan 48202. LITHO IN U.S.A.

