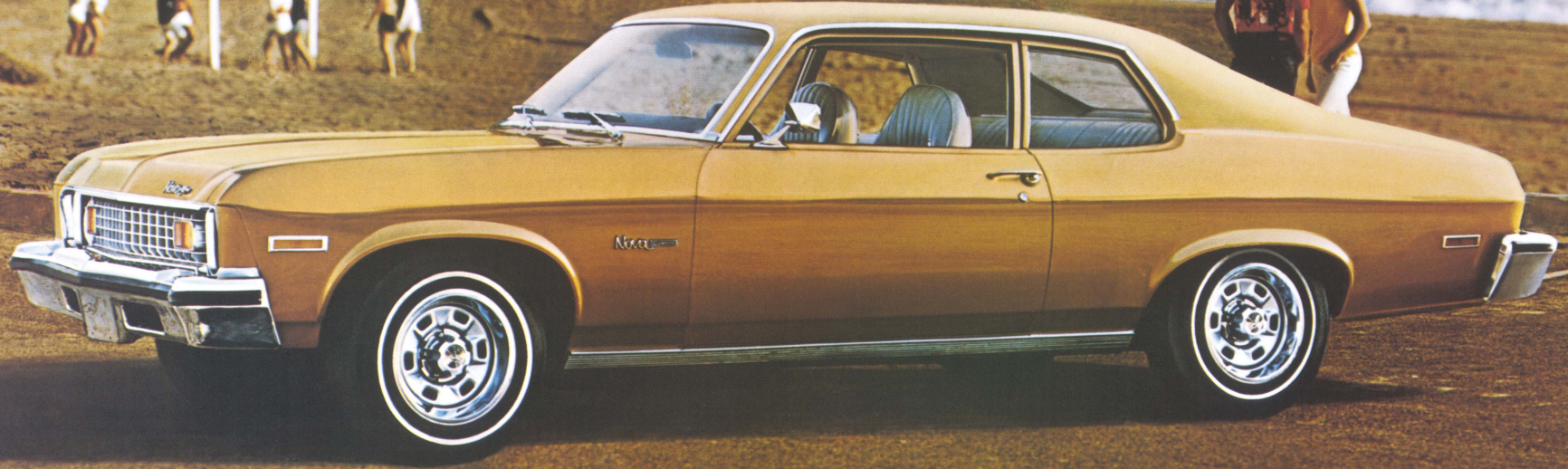


1973 NOVA

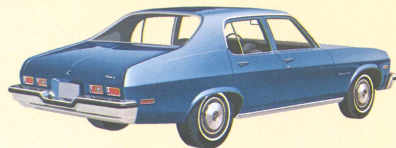
Chevrolet



Nova Custom Hatchback Coupe



Nova Hatchback Coupe



Nova Custom 4-Door Sedan



Nova Coupe



Nova 4-Door Sedan

Nova Custom Coupe shown in large illustration.

NOVA

Standard Features

New expanded model choice in two series—Nova and new top-luxury Nova Custom. Each series includes new Hatchback Coupe in addition to regular coupe and 4-door sedan. New large-grid silver-finish grille (black on SS), new stronger front bumper, new headlight framing, new parking lights built into grille. New full door glass styling on front doors. New rear quarter window shape. New rear-end look with rectangular dual-unit taillights and new bumper styling. New side-guard door beams. New flow-through ventilation system. Flush-and-dry rocker panels. Sealed side-terminal Delco Energizer battery. Coolant-recovery system. Self-adjusting brakes. Computer-selected front and rear springs. New Hatchback Coupe has counter-balanced swing-up rear hatch and folding rear seat back that converts into roomy load area. Nova Custom series includes deluxe bumpers with resilient impact strips; bright accents; and Nova Custom front fender nameplates.

Interiors

For 1973, Nova offers new interior choices.

- ☐ NOVA CUSTOM COUPE AND NOVA CUSTOM HATCHBACK COUPE. New neutral or green pattern cloth and vinyl interiors, plus a new Sport Cloth and vinyl black interior with black and white mixed tones on seating areas. Bucket seat interiors also offered in black Sport Cloth and vinyl, plus two all-vinyl choices—black or neutral.
- ☐ NOVA CUSTOM SEDAN. Black Sport Cloth and vinyl plus two pattern cloth and vinyl choices, green or neutral.
- ☐ NOVA HATCHBACK COUPE AND NOVA COUPE. Three pattern cloth and vinyl choices in black, blue or green. All-vinyl interiors available in black, chamois or green. Bucket seats available in two all-vinyl choices—black or neutral.
- ☐ NOVA SEDAN. Two available pattern cloth and vinyl choices—blue or green, and two all-vinyl choices—black or green.

Reassurance Features

OCCUPANT PROTECTION

- Seat belts with pushbutton buckles for all passenger positions
- Single-buckle seat and shoulder belts for driver and right front passenger with reminder light and buzzer
- Two front seat head restraints
- Energy-absorbing steering column
- Passenger-guard door locks with forward-mounted lock buttons
- Safety door latches and hinges
- Folding seat back latches
- Energy-absorbing padded instrument panel and front seat back tops
- Contoured windshield header
- Thick-laminate windshield
- Padded sun visors
- Safety armrests
- Safety steering wheel
- Cargo guard luggage compartment (except Hatchback Coupe)
- Side-guard beams.

ACCIDENT PREVENTION

- Side-marker lights and reflectors (front side-marker lights flash with direction signal)
- Parking lights that illuminate with headlights
- Four-way hazard warning flasher
- Backup lights
- Lane change feature in direction signal control
- Windshield defroster, washers and dual-speed wipers
- Wide-view inside mirror (vinyl-edged, shatter-resistant glass and deflecting support)
- Outside rearview mirror
- Dual master cylinder brake system with warning light
- Starter safety switch
- Dual-action safety hood latch
- Improved bumper system.

ANTI-THEFT

- Anti-theft ignition key warning buzzer
- Anti-theft steering column lock.

Power Mates

ENGINES

All 1973 Nova engines are equipped with advanced exhaust emission control systems, and are designed to operate efficiently on all regular grade gasolines including low-lead or no-lead. In addition to the lower exhaust emissions attainable, there are benefits in longer life for your spark plugs, exhaust system and other engine components. If these no-lead, low-lead gasolines are not available, any leaded regular grade gasoline with a research octane number of 91 or higher may be used.

- ☐ Turbo-Thrift 250 Six, standard. Single-barrel carburetor.
- ☐ Turbo-Fire 307 V8, standard. Two-barrel carburetor.

- ☐ Turbo-Fire 350-2 V8, available. Two-barrel carburetor.
- ☐ Turbo-Fire 350-4 V8, available. Four-barrel carburetor.

TRANSMISSIONS

- ☐ 3-SPEED manual, standard. Column-mounted lever. Forward gears fully synchronized for greater durability and smoother, quieter shifting. Floor-mounted shift lever available; included when you order console.
- ☐ 4-SPEED manual, available. Fully synchronized. Floor-mounted lever.
- ☐ POWERGLIDE 2-range automatic, available. Column-mounted lever.
- ☐ TURBO HYDRA-MATIC, available. Column-mounted lever or floor-mounted when you order console. Can be shifted manually through three forward ranges, or left in "drive" for automatic shifting.

ENGINES	SAE net hp*	Engine Design	3-Speed Manual	4-Speed Manual	Power-glide	Turbo Hydra-Matic
Turbo-Thrift 250 Six	100	Std.	Std.		Avail.	
Turbo-Fire 307 V8	115	Std.	Std.			Avail.
Turbo-Fire 350-2 V8	145	Avail.	Std.			Avail.
Turbo-Fire 350-4 V8	175	Avail. (1)		Avail.		Avail.

*Net horsepower ratings, in accordance with Society of Automotive Engineers standards, represent the power output of engines as installed in the automobiles.

(1) Power disc/drum brakes required

Available Options

- ☐ SS available for Nova Custom or Nova Hatchback Coupe and Coupe with any engine choice. Includes: black accented grille. SS emblem on grille, fender, deck lid and steering wheel. Tapered body side striping. Black-finished rear panel. Left-hand remote control sport mirror. Right-hand manual-control sport mirror. 14" x 6" rally-style wheels with special center caps. Special front and rear suspension. SS equipment for Nova models also includes the following standard Nova Custom features: Bright parking light and taillight accents. Bright roof drip molding. Color-keyed deep-twist floor carpeting. Load floor carpeting on

Hatchback Coupe.

- ☐ Sky Roof. A sliding vinyl roof panel that opens up to deliver more ventilation.
- ☐ Space-saver spare tire with a reduced profile to give you more storage space. (Standard on Hatchback Coupe models.)
- ☐ Comfortilt steering wheel. New to Nova this year. Tilts to six different positions to accommodate different size persons, adds more comfort to your driving.
- ☐ Exterior Decor package: Body side molding with black accent (except Hatchback Coupe or coupe with SS equipment). Bright side window moldings.
- ☐ Vinyl roof cover (Touring-style for Hatchback Coupe) available in black or white with any exterior color, as well as blue, chamois, green, neutral or red depending on exterior body color.
- ☐ Pushbutton all-transistor radios:
- ☐ AM ☐ AM/FM. Both feature hidden windshield antenna, deep-cone speaker and variable dial light that dims with panel lights.
- ☐ Variable-ratio power steering.
- ☐ Power brakes.
- ☐ Power disc/drum brakes.
- ☐ White stripe or white lettered tires.
- ☐ Four-Season air conditioning.
- ☐ Soft-Ray tinted glass.
- ☐ Heavy-duty battery.
- ☐ Heavy-duty radiator.
- ☐ Electric clock.
- ☐ Remote-control outside rearview mirror.
- ☐ Rear window defogger.
- ☐ Strato-bucket front seats for coupe model.
- ☐ Center console. (Available with Strato-bucket seats only.)
- ☐ Special V8 instrumentation for coupe models with bucket seats and console.
- ☐ Special suspension.
- ☐ Sport suspension.
- ☐ Positraction rear axle.
- ☐ Rally wheels.
- ☐ Full wheel covers.
- ☐ Wire wheel covers.
- ☐ Wheel trim rings.

For Other Options and Custom Features, see your dealer. Some Options are illustrated on the other side of this sheet.

Colors

Sixteen Magic-Mirror acrylic lacquer colors, 15 new for '73.

- Light Blue Metallic • Dark Blue Metallic • Midnight Blue Metallic • Brown Metallic • Chamois • Light Copper Metallic • Green-Gold Metallic • Light Green Metallic • Dark Green Metallic • Midnight Green • Medium Orange Metallic • Medium Red • Dark Red Metallic • Silver Metallic • Antique White • Light Yellow.

Facts and Figures

Wheelbase.....111.0"
Length.....194.3"; Width... 72.4"
Height: sedan.....53.9"
coupe.....52.5"
Tread: front...59.8"; rear...59.6"
Tire size.....E78-14
Fuel tank rated capacity.....21 gals.
*Nova SS—Front 60.3"
Rear 60.1"
†Nova Custom—195.1"

ESTIMATE YOUR 1973 NOVA

(Consult salesman or car price sticker)

Price of model selected\$ _____

Popular extras:

Automatic transmission
Radio
White stripe tires
Wheel covers

Other extras you may want:

Total of model and extras\$ _____

Trade-in value of present car—estimate or see salesman\$ _____

Difference\$ _____

All illustrations and specifications contained in this literature are based on the latest product information available at the time of publication approval. The right is reserved to make changes at any time without notice in prices, colors, materials, equipment, specifications and models, and to discontinue models. Chevrolet Motor Division, General Motors Corporation, Detroit, Michigan 48202. Litho in U.S.A.

January, 1973

2230H—Rev.

