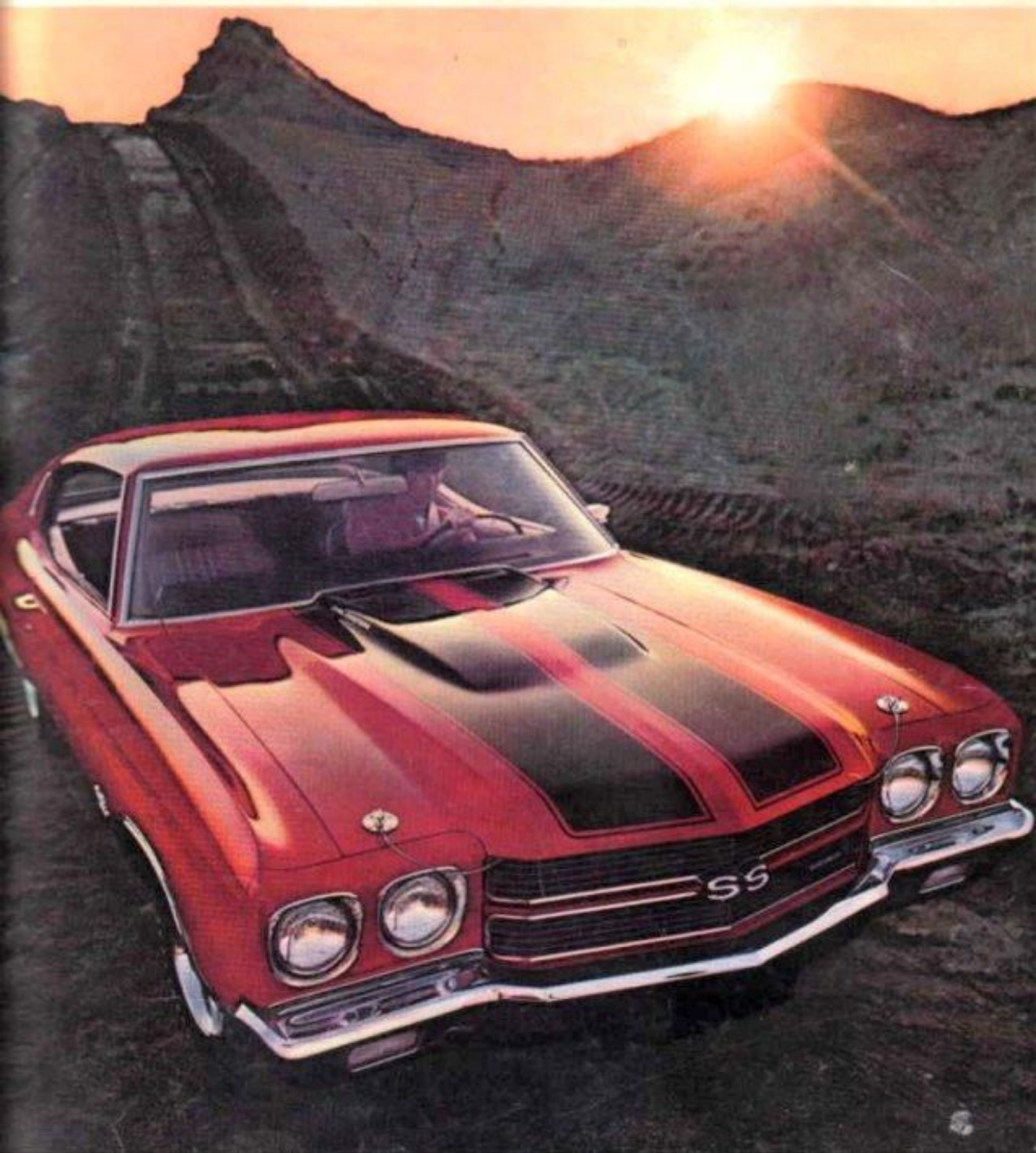
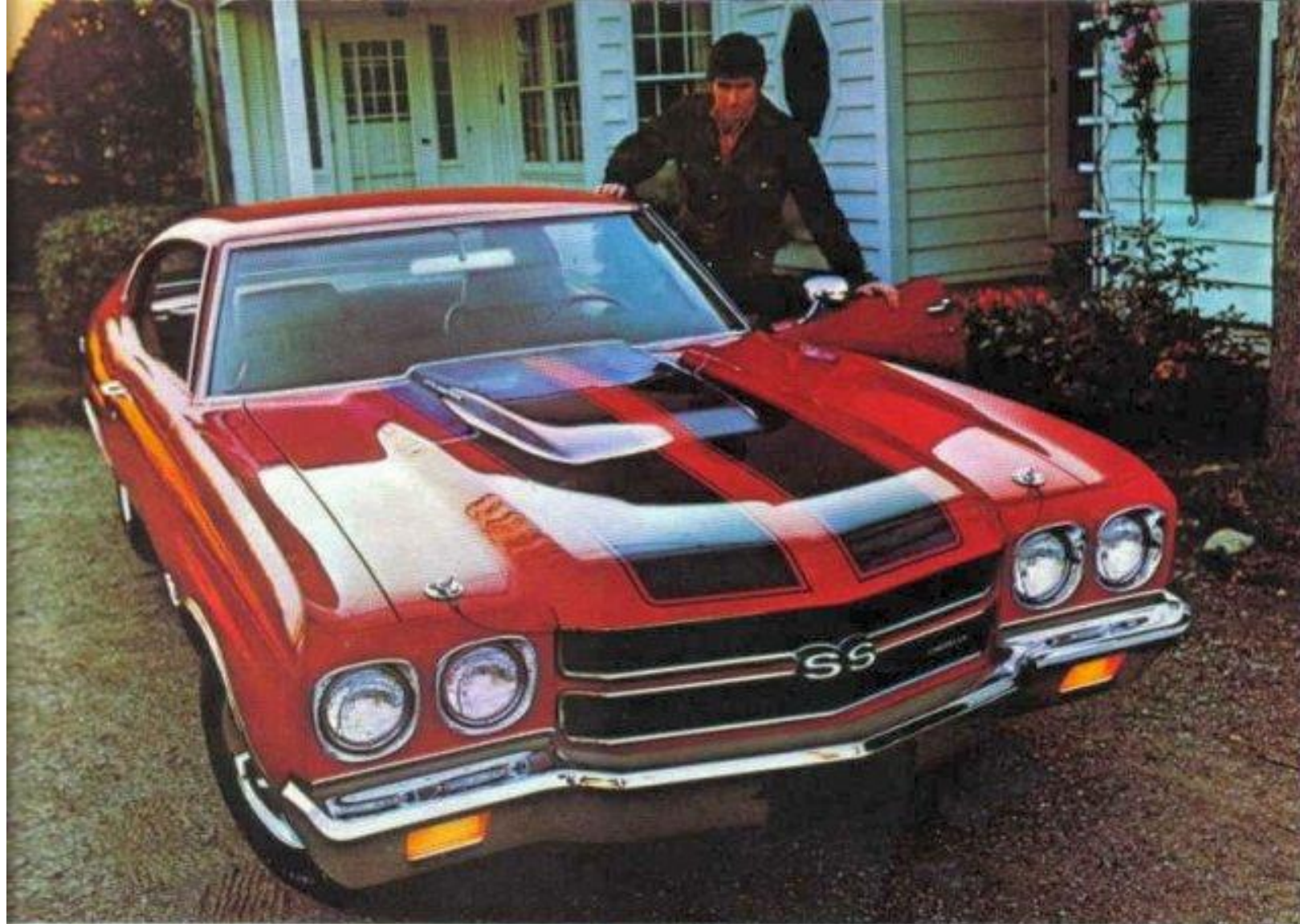


1970 Chevelle.
The performance starts as soon as you're seated.





SS 396 Sport Coupe with Cowl Induction

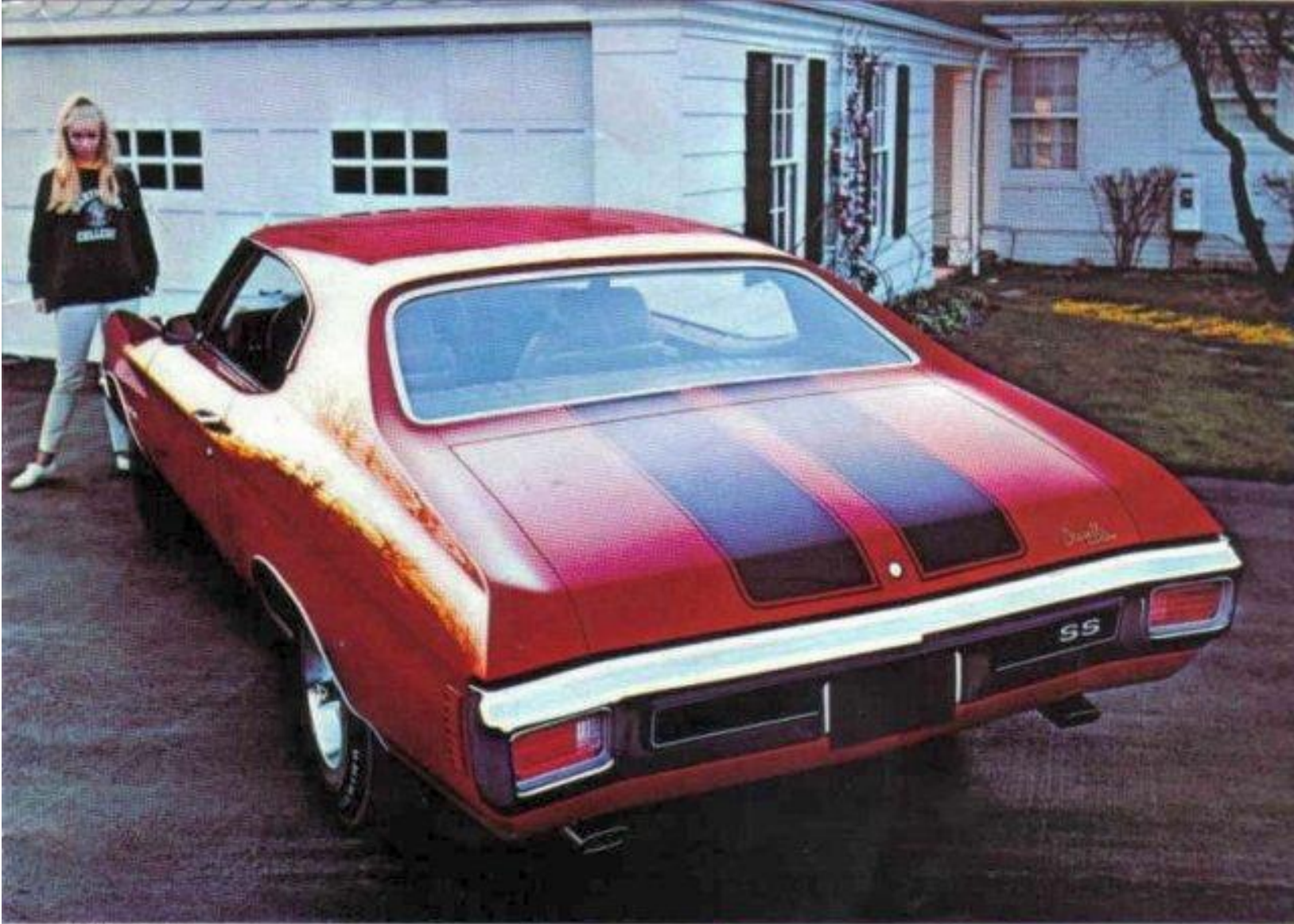


Cowl Induction, available for SS versions, is a new idea in feeding extra air to engines with fantastic lung capacities. You can hardly mistake an SS thusly equipped, but just in case you do, the scoop's graceful contours carry the words "Cowl Induction."

How does it work? Just step on the gas and the scoop opens to shoot an extra breath of cool air into the engine air intake. It's like second wind to a distance runner. When you specify Cowl Induction you get sport stripes and functional hood lock pins along with it.

Of course, there's a lot more to a real performance car than just a hefty engine, and this SS 396 is no exception. On the inside there's a commanding energy-absorbing instrument panel that really makes you feel as though you're in charge of things. Special instrumentation is available on order. And you can order all-vinyl Strato-bucket seats. By the way, power front disc brakes are standard.

Cowl Induction and other things that



SS 396 Sport Coupe

The SS model options have their own special hood (even without Cowl Induction). Among other SS items are a special rear bumper with resilient insert and a bold new grille. If you like, you can order sport stripes for the rear deck and hood (standard with Cowl Induction.)

Any car has wheels, but the SS has more. Special wheels are part of the SS package. So are wide-oval white-lettered tires. And you can order white-stripe tires.

You're going to like the SS suspension. It's a grabber. Gets a grip on the road and keeps it, particularly on corners.

- ① The command post: new optional at extra cost instrument panel.
- ② Cowl Induction, available on order.
- ③ Special SS grille.
- ④ Special SS wheels.



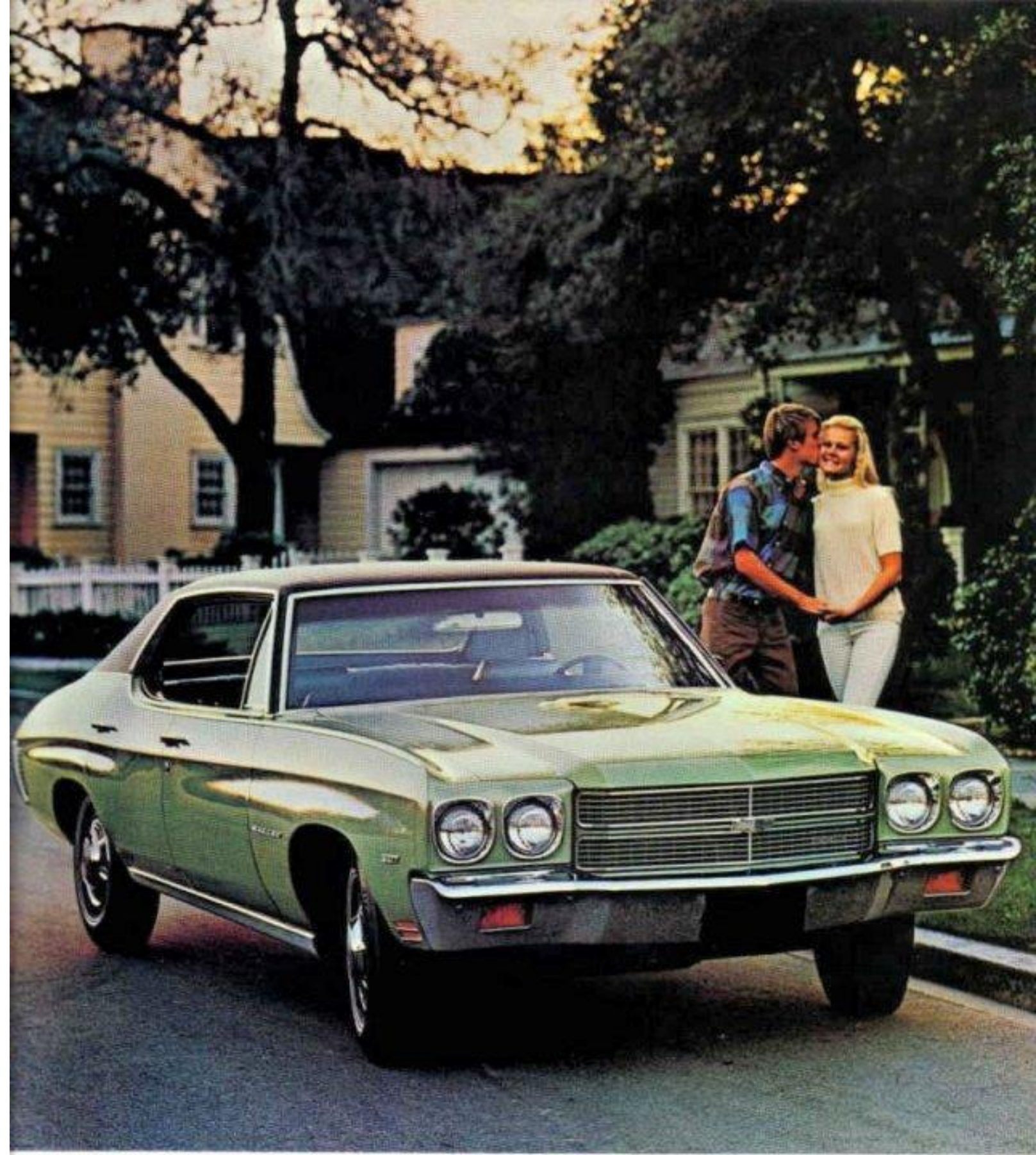
keep the SS from pausing for breath.

Some of the equipment illustrated is optional at extra cost.



Chevelle Malibus are something else, too...





Camaro Sport Sedan

By now it should be which



Left: Malibu 4-Door Sedan

Above: Malibu Convertible



Fresh, beautiful styling. From beginning to end, Malibu has it all over other cars in its class. A newly-styled grille with a massive new bumper below accents Malibu's new head-on beauty. New rear-end styling with taillights and integral backup lights housed in the rear bumper commands a second look. And Chevelle's lower body styling has more-sculptured-than-ever good looks.

On the inside, Malibu's luxurious interiors give your taste full scope with a wide choice of colorful new fabrics and durable vinyls.

There are four Malibu models to choose from: Sport Coupe and Convertible are on a highly manoeuvrable 112" wheelbase, while the Sport Sedan and 4-Door Sedan have a generous 116" wheelbase.

As for power, Malibu's standard Six has been boosted to 155 horsepower. Standard V8 is the 200-hp Turbo-Fire 307. You can specify from three other optional V8s, including the new 330-hp Turbo-Jet 400. Additional higher performance engines are available with SS model options.

Malibu rather than whether.

Some of the equipment illustrated is optional at extra cost.



300 Deluxe Sport Coupe



Deluxe 4-Door Sedan

If you want to count your pennies yet still keep up with the Joneses, Chevelle shows you the way with two thrifty 300 Deluxe models: Sport Coupe and 4-Door Sedan. It's surprising how much run they'll give you for so little money.

For a car that has such saving ways, the 300 Deluxe more than holds its own in looks, comfort and performance. It's no poor relative on the inside, either. You have a choice of three tasteful cloth-and-vinyl interiors: black, blue or dark green. Or, you may order an all-vinyl interior in black.

Like all 1970 Chevelles, the 300 Deluxe has fiberglass-belted tires that not only increase traction but greatly extend tread life.

Something else worth mentioning. 300 Deluxe has Chevelle's improved Full Coil Suspension with computer-selected springs to keep the going smooth even in the rough. Combine this with Chevelle's tough, perimeter frame, advanced body mounting system and excellent weight distribution and you've got a road machine to reckon with in Chevelle 300 Deluxe.

Some of the equipment illustrated is optional at extra cost.

Do what you want with what you save.

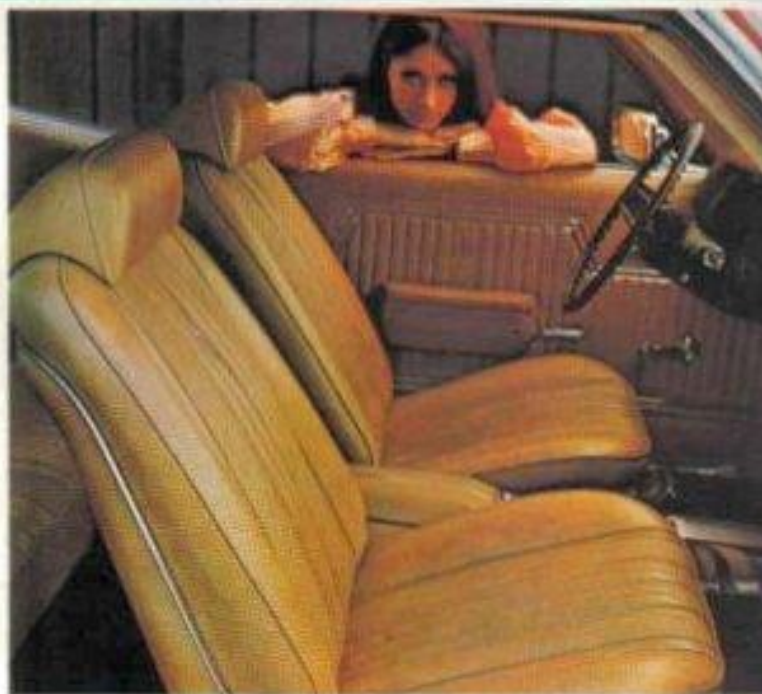


Malibu interior

The more you care about interior luxury and comfort, the more enchanted you'll be when you step inside Chevelle. The masterful Body by Fisher touch is everywhere. You see it in the richly patterned fabrics and supple-grained vinyls. You feel it in the extra comfort of the generously foam-padded seats and the underfoot plushness of deep-twist carpeting. And you experience it in the extra convenience of the impressive energy-absorbing instrument panel with the controls clustered to put them within easy reach.

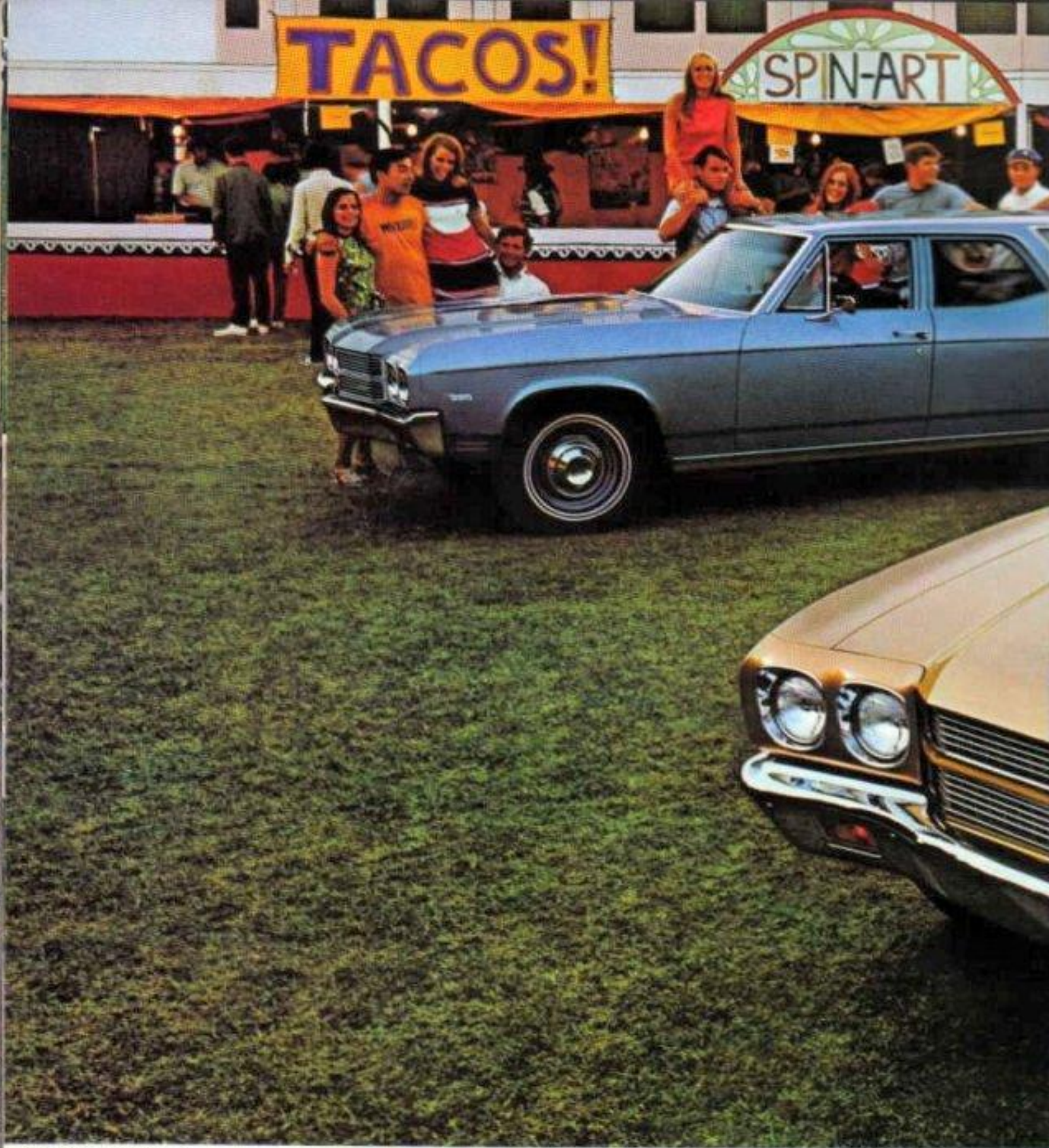
As evidence, we give you the Malibu interior above. It is handsomely styled and available in a wide variety of color choices. Something else: when you dim the instrument panel lights, the radio dial light dims. You get Astro Ventilation in Malibu and 300 Deluxe Sport Coupes and Malibu Convertibles and Hide-A-Way windshield wipers on all Malibu models.

For your Malibu Sport Coupe or Convertible you can order sporty all-vinyl Strato-bucket seats and add a centre console, complete with storage compartment and courtesy light. Look to the right and you'll get the idea.



Malibu Strato-bucket seats with centre console and SS option

Be seated...
in luxurious and comfortable Chevelle interiors.



Concours Station Wagon

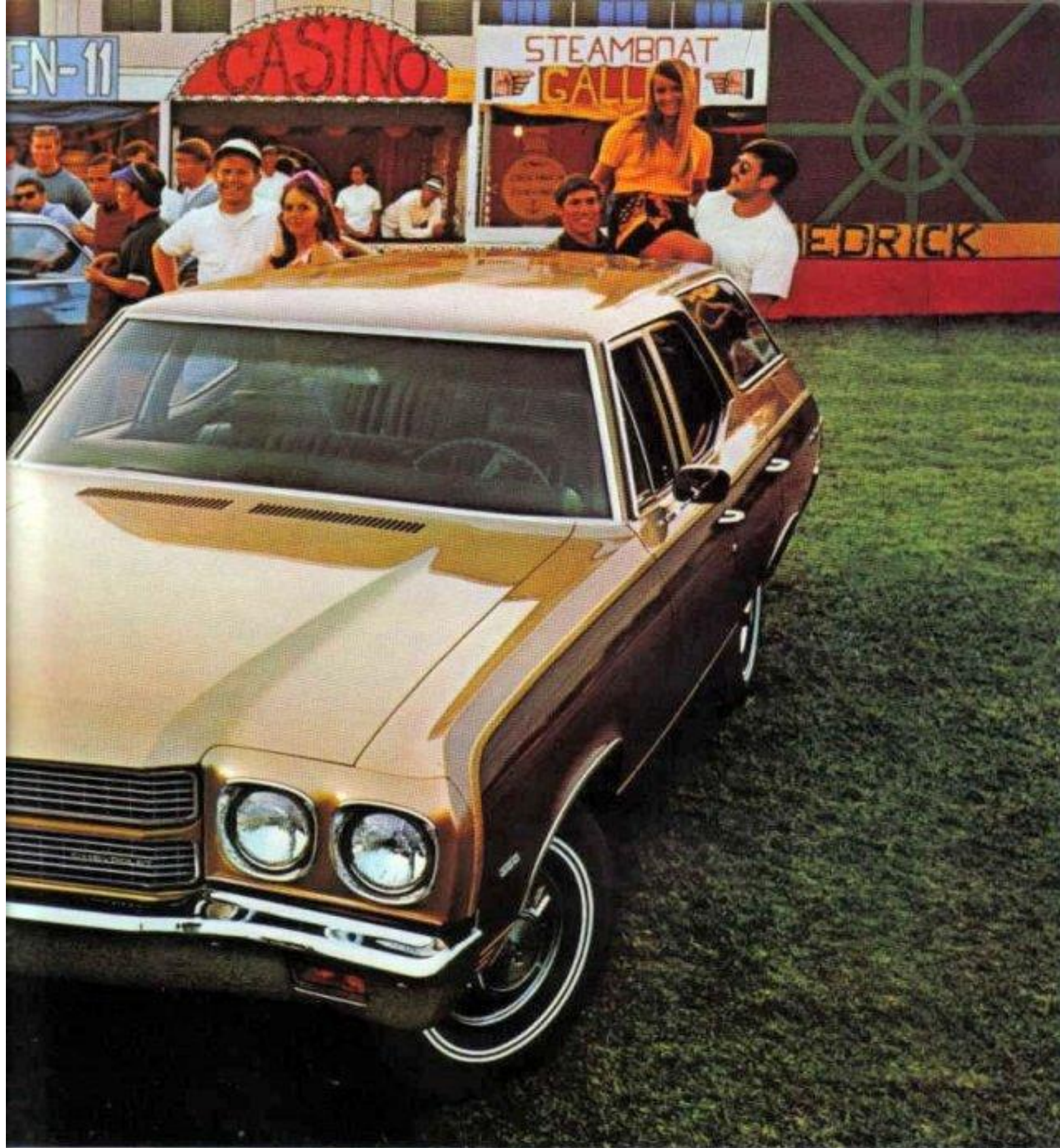
Want an easy-handling wagon that's just as easy on your pocket-book? Then step right up to one of Chevelle's 116-inch-wheelbase Walk-in Wagons. There are four to choose from: Concours Estate, Concours, Greenbrier and Nomad.

All have a dual-action tailgate, an easy-to-reach boarding step right in the bumper and a swept-back roof design. You can walk

right in and sit right down without going through contortion. And you don't pay extra for the privilege.

Now consider our distinctive new grille. Blend in a new front bumper, new parking and front side marker lamps, distinctive hood trim (Concours Estate has rich, simulated wood side panels), and you have a wagon that will take you into the Seventies in grand style.

Easy-going Chevelle Walk-in Wagons



Concourse Estate Wagon

Power? All kinds for all purposes. Two standard engines, for example. A larger, more powerful 155-hp Turbo-Thrift 250 Six that goes and goes on regular fuel (for all Chevelle Wagons except Concourse Estate and 3-seat models.) Standard V8 power for all models comes from our regular-fuel 200-hp Turbo-Fire 307. Three extra-cost V8s include a big, new 330-hp Turbo-Jet 400.

Between you and the road, you'll find new longer wearing fiber-glass-belted tires. Power front disc brakes (standard on all V8 models except Nomad.)

Full Coil suspension with computer-selected springs. Separate perimeter-type frame. Advanced body mounting system. You'll ride in exceptional comfort and quiet.

The going price is surprisingly low.

Some of the equipment illustrated is optional at extra cost.



Nomad all-vinyl interior

Above: Greenbrier all-vinyl interior

Concourse Estate all-vinyl interior

All Chevelle Wagons have all-vinyl interiors. So they're not only attractive, but very easy to keep looking new. All you need is soap and water, a cloth and a little elbow grease.

There are other fine touches you'll appreciate. Luxurious, deep twist carpeting is standard on our Concourse Estate and Concourse Wagons. Both models also feature color-keyed textured vinyl-coat

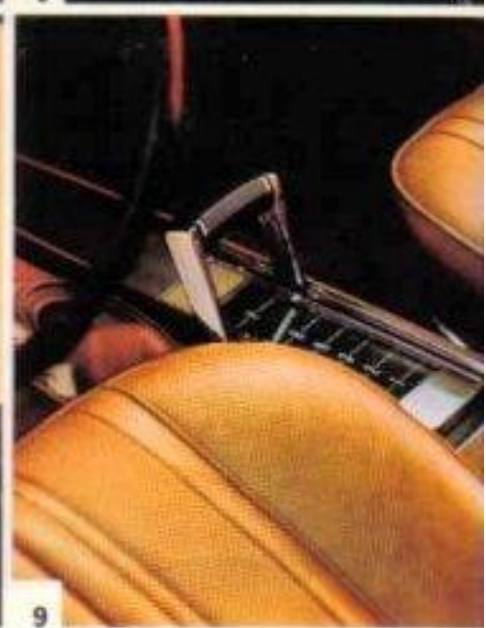
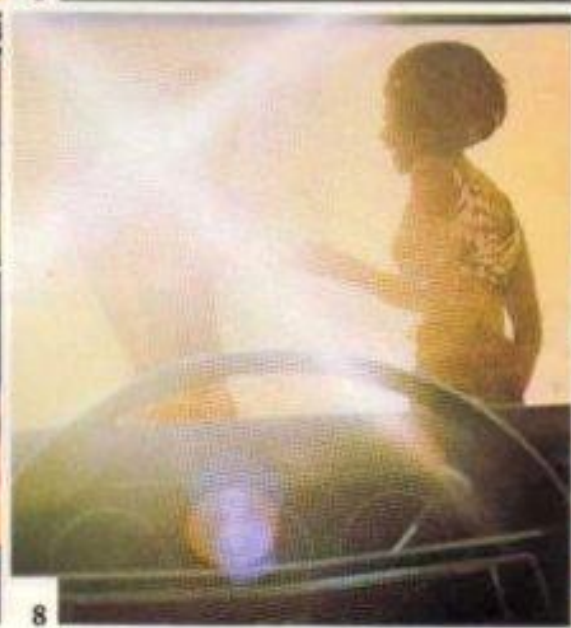
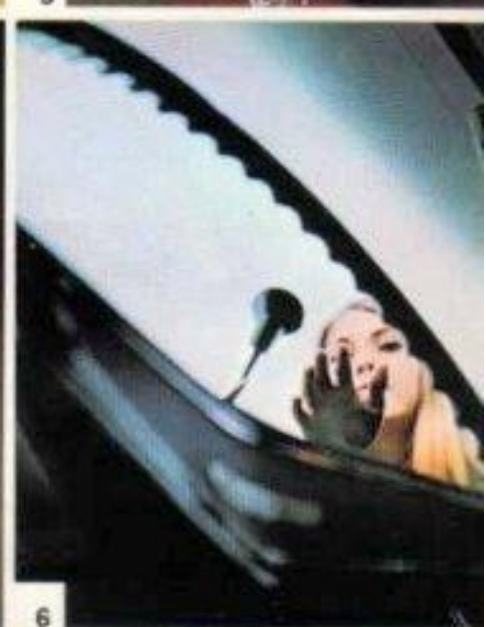
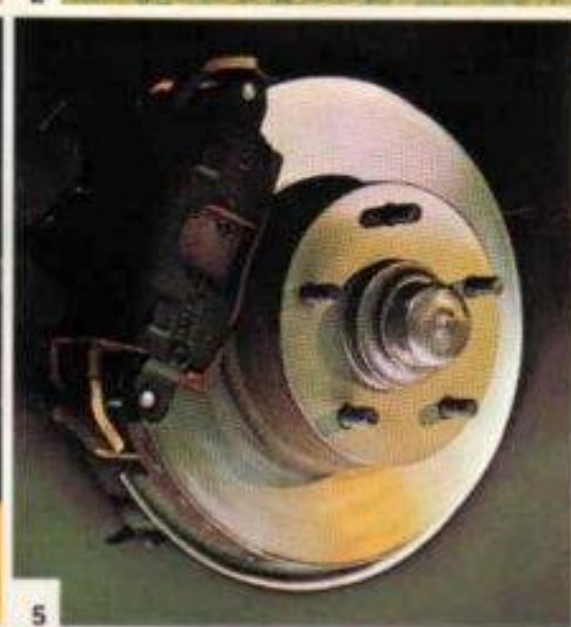
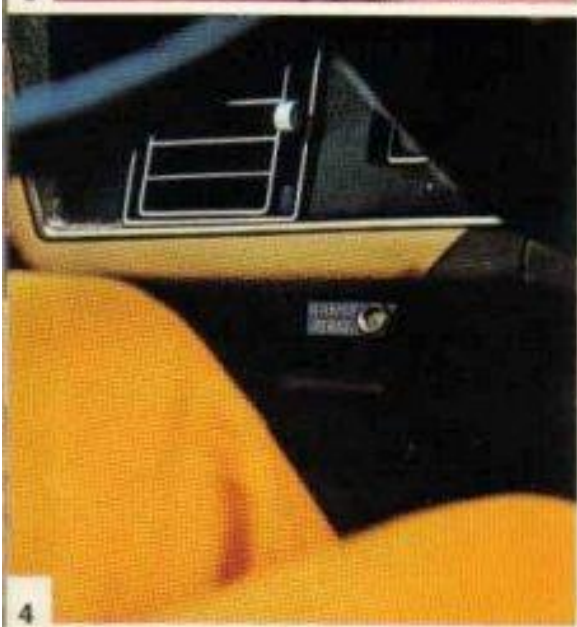
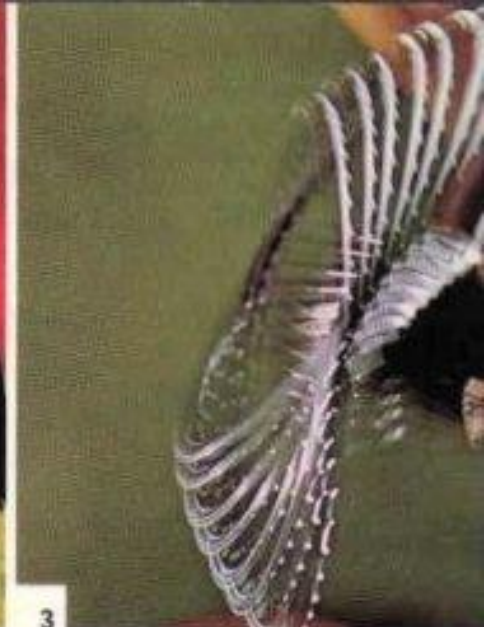
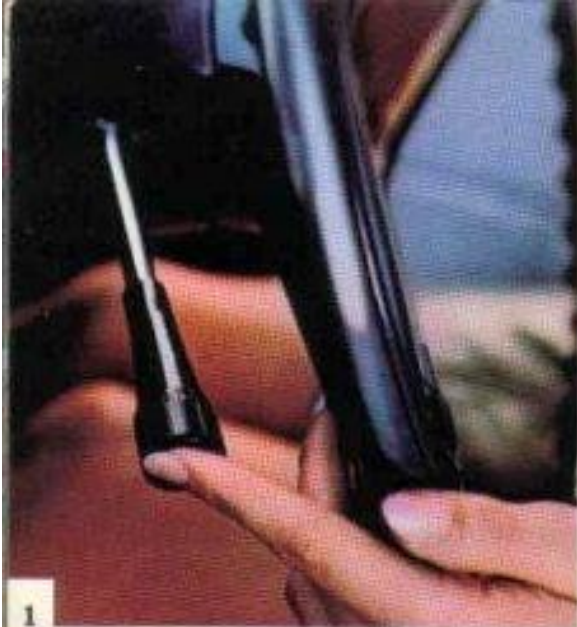


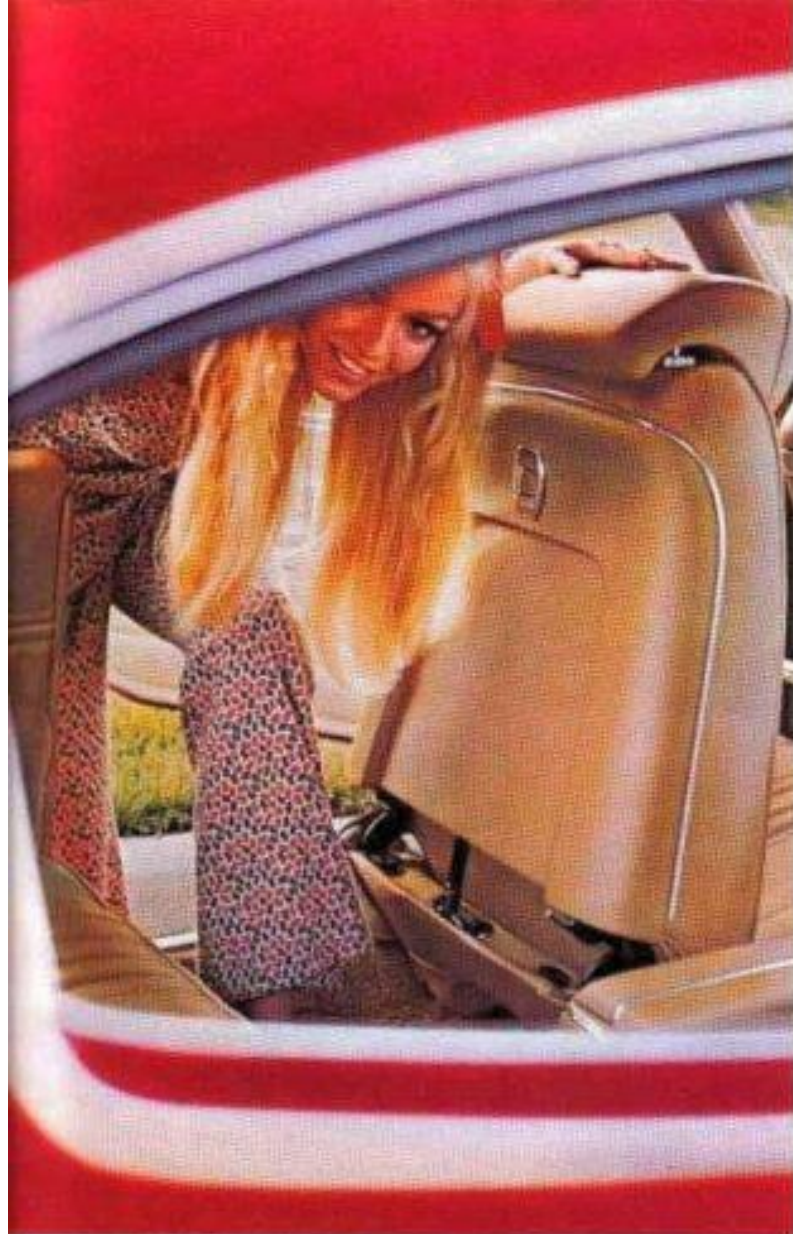
metal cargo area and vinyl sidewall trim.

Speaking of interiors, there are three new ones to choose from this year for any Chevelle Wagon: black, medium blue or saddle.

We've added a new instrument cluster design, too, plus a new energy-absorbing precision-molded instrument panel. It's just one of the many occupant-protection features for 1970.

A little soap and water keeps it looking this way.





1 New Finger-tip Windshield Washer/Wiper Control System. Even the end of the turn signal control doesn't go to waste. There's a button there now that you only need push to start the windshield wipers and washers going. Easier to reach when you're buckled in.

2 Deluxe Wheel Covers. Take your choice of full covers, trim rings or rally wheels.

3 Comfortilt Steering Wheel. Adjust the wheel to your own comfort with any one of seven steering positions. Flip it up to make getting in and out even easier.

4 Windshield Washer Fluid Warning Light. Tells you when the level in the washer reservoir is getting low. Included with auxiliary lighting group.

5 Power Disc Brakes. A small extra investment buys a lot of extra stopping power—up front where you need it most.

6 Hidden Radio Antenna. Embedded right in with the layers of the windshield glass. Included with all factory-installed radios or Tinted Glass.

7 New Concealed Stereo Tape Door. That innocent-looking radio dial in Chevrolet's new stereo tape system leads a double life. As always, you can tune the radio with it. But lo, you can push it in and insert a stereo tape cartridge.

8 Four-Season Air Conditioning. Cools, heats, dehumidifies and filters—whatever the outside climate demands. No more reason for discomfort in any weather.

9 Center Console. Available in models equipped with bucket seats. Complete with storage compartment and courtesy light. With your choice of 4-Speed manual or automatic transmissions.

10 Automatic Seat Back Release. For two-door models equipped with power door locks only. When the door is opened the seat back locks are automatically released.

11 Variable-ratio Power Steering. Steering response actually quickens as wheels are turned from the straight-ahead position. You get added manoeuvrability for parking with no loss of road feel on the straightaway.

And: AM radio ☐ AM-FM radio ☐ Power brakes ☐ Power seat ☐ Power windows ☐ Vinyl roof cover ☐ Deluxe seat belts ☐ Rear-window defogger ☐ Appearance Guard Group ☐ Soft-Ray tinted glass ☐ Positraction ☐ Light monitoring system ☐ Rear-deck luggage carrier ☐ Cruise-Master speed control ☐ Trailer hitch and wiring harness.

Some of the things we do to make the going safe.

Occupant Protection Features Seat belts with pushbutton buckles for all passenger positions. Shoulder belts with pushbutton buckles—driver and right front passenger (except Convertible). Two front seat head restraints. Energy-absorbing steering column. Passenger-guard door locks with forward-mounted lock buttons. Safety door latches and hinges. Folding seat back latches. Energy-absorbing padded instrument panel and front seat back tops. Contoured windshield header (except Convertible). Thick-laminate windshield. Padded sun visors. Safety armrests. Safety steering wheel. Side-guard beam door structure. Cargo-guard luggage compartment. Padded or yielding windshield pillars.

Accident Prevention Features Side marker lights and reflectors. Parking lights that illuminate with headlights. Four-way hazard warning flasher. Back-up lights. Lane-change feature in direction signal control. Windshield defroster, washers and dual-speed wipers. Wide-view inside day-night mirror (vinyl-edged, shatter-resistant glass and deflecting support). Outside rearview mirror. Fiberglass-belted tires and tire tread wear indicators. Dual master cylinder brake system with warning light. Starter safety switch. Dual-action safety hood latches.

Anti-Theft Features Anti-theft ignition key warning buzzer. Anti-theft steering column lock.



The extras.

SPECIFICATIONS

		MALIBU	300 DELUXE	CONCOURS ESTATE	CONCOURS	GREENBRIER	NOMAD
Body Styles (P.V. only)		Sport Coupe Sport Sedan Convertible 4-dr. Sedan	Sport Coupe 4-dr. Sedan	*4-dr. 2-st. *4-dr. 3-st.	4-dr. 2-st. *4-dr. 3-st.	4-dr. 2-st. *4-dr. 3-st.	4-dr. 2-st.
Engines	Standard (6 cyl.) Optional (8 cyl.) (See chart below)	250 307 350 454 350 396 400 396	250 307 350 350 400	N.A. 307 350 350 400	250 307 350 350 400	250 307 350 350 400	250 307 350 350 400
Transmissions	Standard	3-spd. manual 4-spd. manual Turbo Hydra-matic	3-spd. manual 4-spd. manual Turbo Hydra-matic	3-spd. manual 4-spd. manual Turbo Hydra-matic	3-spd. manual 4-spd. manual Turbo Hydra-matic	3-spd. manual 4-spd. manual Turbo Hydra-matic	3-spd. manual 4-spd. manual Turbo Hydra-matic
Brakes	Disc (Drum) (Dia. ins.)	9.5 Frt. 9.5 Rr. 155.2	9.5 Frt. 9.5 Rr. 155.2	*11.00 Front Disc 9.5 Rear Drum 106.1	*11.00 Front Disc 9.5 Rear Drum 106.1	*11.00 Front Disc 9.5 Rear Drum 106.1	9.5 Frt. 9.5 Rr. 155.2
W/V outside only	Effective Area (sq. ins.)	—	—	—	—	—	—
Steering Ratio	Standard	28.7:1	28.7:1	28.7:1	28.7:1	28.7:1	28.7:1
Control	Power—Constant Power—Variable	— 18.6:1-14.5:1	— 18.6:1-14.5:1	— 21.6:1	— 21.6:1	— 21.6:1	— 21.6:1
Turning Radius (ft.)	Curb to Curb—116" W.B.	41.0	41.0	41.0	41.0	41.0	41.0
Electrical	Standard (6 cyl.) (8 cyl.)	45 amp. 61 amp.	45 amp. 61 amp.	45 amp. 61 amp.	45 amp. 61 amp.	45 amp. 61 amp.	45 amp. 61 amp.
Supermarket		Full Coil	Full Coil	Full Coil	Full Coil	Full Coil	Full Coil
Frame		Perimeter	Perimeter	Perimeter	Perimeter	Perimeter	Perimeter
Wheelbase (in.)	Sedans & Wagons Sport Coupe or Conv.	116.0 112.0	116.0 112.0	116.0 —	116.0 —	116.0 —	116.0 —
Length (Overall) (in.)	Sedans & Wagons Sport Coupe or Conv.	201.2 197.2	201.2 197.2	207.2 —	207.2 —	207.2 —	207.2 —
Weight (in.)	Sedans & Wagons Sport Coupe or Conv.	53.5 52.8/53.2	53.5 52.8	54.4 —	54.4 —	54.4 —	54.4 —
Width (in.)		75.4	75.4	75.4	75.4	75.4	75.4
Weight (lb.)	(4-dr.)	3434	3265	3984	3984	3898	3822
Turned (in.)	Front Rear	59.8 59.8	59.8 59.8	59.3 59.2	59.3 59.2	59.3 59.2	59.3 59.2
Track	base	E78 x 14(L6) F78 x 14(V8)	E78 x 14(L6) F78 x 14(V8)	G78 x 14	G78 x 14	G78 x 14	G78 x 14
Wheel Size		14 x 5	14 x 5	14 x 5	14 x 5	14 x 5	14 x 5
Wheel Clearance (4-dr.) (in.)		4.8	4.8	5.9	5.9	5.9	5.9
Brake Clearance (in.)	Front Rear (Sport Coupe)	37.7 36.4	37.7 36.4	38.3 38.6(a)	38.3 38.6(a)	38.3 38.6(a)	38.3 38.6
Engine Clearance (in.)	Front Rear (Sport Coupe)	42.8 32.6	42.8 32.6	42.8 34.8(b)	42.8 34.8(b)	42.8 34.8(b)	42.8 34.8
Ground Clearance (in.)	Front Rear (Sport Coupe)	58.3 37.0	58.3 37.0	58.3 57.4(c)	58.3 57.4(c)	58.3 57.4(c)	58.3 57.4
Wheel Clearance (in.)	Front Rear (Sport Coupe)	59.3 38.3	59.3 38.3	59.3 59.3(d)	59.3 59.3(d)	59.3 59.3(d)	59.3 59.3
Fuel Tank Capacity (imp. gals.)		16.6	16.6	16.6	16.6	16.6	16.6
Trunk Luggage Space (cu. ft.)		14.6	14.6	—	—	—	—
Cargo Volume (not including Sutons amp.) (cu. ft.)		—	—	94.0	94.0	94.0	94.0
		(a) 3rd seat 36.3	(b) 3rd seat 30.6	(c) 3rd seat 44.3	(d) 3rd seat 44.3		

ENGINES

	155 h.p. Turbo-Thrift 350 Six	200 h.p. Turbo-Fire 307 V8	250 h.p. Turbo-Fire 350 V8 1.65	300 h.p. Turbo-Fire 350 V8 1.48	330 h.p. Turbo-Jet 400 V8 1.53	350 h.p. Turbo-Jet 396 V8 2.25	360 h.p. Turbo-Jet 454 V8 2.25/1.85
Displacement (cu. in.)	250	307	350	350	400	396	454
RPM @ rpm	155 @ 4200	200 @ 4600	250 @ 4800	300 @ 4800	330 @ N.A.	350 @ 5200	360 @ N.A.
Turnover @ rpm	235 @ 1600	300 @ 2400	345 @ 2800	380 @ 3200	410 @ N.A.	415 @ 3400	500 @ N.A.
Compression Ratio	8.5:1	9.00:1	9.00:1	10.25:1	10.25:1	10.25:1	10.25:1
Carburetors	1 bbl.	2 bbl.	2 bbl.	4 bbl.	4 bbl.	4 bbl.	4 bbl.
Bore & Stroke (ins.)	3.875 x 3.53	3.875 x 3.25	4.00 x 3.48	4.00 x 3.48	4.126 x 3.76	4.126 x 3.76	4.25 x 4.00
Pist.	Regular	Regular	Regular	Premium	Premium	Premium	Premium
Oil System (Less Filter Imp. Qts.)	3.3	3.3	3.3	3.3	3.3	3.3	3.3
Cooling System (Imp. Qts.)	10.5	13.0	14.0	14.0	20.0	20.0	18.0
Exhaust System	Single	Single	Single	Single	Dual	Dual	Dual
Valve Lifters	Hydraulic	Hydraulic	Hydraulic	Hydraulic	Hydraulic	Hydraulic	Hydraulic
Crank Diameter (ins.)	9.12	10.34	10.34	11.0	11.0	11.0	11.0
Auto valve—without Air Cond.							
W/V 1-Speed manual	3.08	3.08	3.08	N.A.	N.A.	N.A.	N.A.
W/V 4-Speed manual	N.A.	3.36	3.36	3.31	3.31	3.31	3.31
Powerglide	3.08	3.08	2.73	2.73	N.A.	N.A.	N.A.
Turbo Hydra-matic	2.73	2.73	2.56	2.73	3.31	3.31	3.31

Provisions optional for all series

* Consult your dealer regarding specific availability of additional optional engine.

Every Chevrolet has to make it
before we mark it.



The illustrations in this catalogue do not necessarily show standard colours, materials and equipment. General Motors of Canada Limited, reserves the right to make changes at any time without notice, in price, colours, materials, equipment, specifications and models and also to discontinue models. This right may be exercised without incurring any responsibility with regard to cars previously sold.

GENERAL MOTORS OF CANADA LIMITED, OSHAWA, ONTARIO

Printed in Canada