

1966 Chevelle / *by Chevrolet... most popular value of its size*







Super Sport 396 Convertible in Regal Red.



Chevelle 300 Deluxe 4-Door 2-Seat Station Wagon in Artesian Turquoise.



Chevelle 300 4-Door Sedan in Willow Green.

Chevelle '66

*Chevrolet kind of quality
in a slightly smaller size*

Chevelle is for people who want a heaping measure of style and value in a middle-sized automobile. Trim and maneuverable outside, yet fit for a batch of six-footers inside. Four series: Super Sport 396, Malibu, Chevelle 300 Deluxe and Chevelle 300. And twelve models: convertibles, sport coupes, wagons, 2- and 4-door sedans. Even a dapper new Malibu Sport Sedan.

New styling's an important part of Chevelle's appeal. The 1966 models are especially big on looks. Broad new grille and bumper treatment; rakish new roof lines; curved side windows; distinctive chrome accents for each series. Chevelle cuts quite a figure.

Under the bonnet, most Chevelles start with a standard 120-hp 194 Six or a standard 195-hp 283 V8 (depending on model). You can specify a 140-hp Six or other V8 power plants ranging up to a 275-hp 327 V8. Super Sport 396 models have a 325-hp 396 V8 standard, and a 360-hp 396 V8 can be ordered. The new Chevelle standard transmission is a fully synchronized 3-Speed.

Inside, a handsome new padded instrument panel groups controls the way they should be—businesslike, easily accessible for the driver. Pattern cloth upholstery carries out interior color schemes with a decorator's touch. As you might expect, Super Sport 396 models and the Malibu Convertible have all-vinyl interiors. Every wagon sports an all-vinyl interior, too.

As if the going wasn't already some of the sweetest around, every Chevelle is now loaded with comfort and convenience items. Outside rearview mirror; padded instrument panel; padded sun visors; two-speed, glare-reducing windshield wipers and washers; backup lights; and shatter-resistant inside rearview mirror.

Order your 1966 Chevelle to suit your personal taste. You'll find a large selection of extra-cost Options and Custom Features listed on Page 14, some of which are illustrated and described in this catalog.

Super Sport 396

Every good-looking line suggests agility

Super Sport 396 Coupe and Convertible have a popular size with a look of action. Gleaming moldings on wheel openings, sills, rear quarter panels, grille and windshield outline the low sporting profile. Simulated hood air scoops, red-stripe tires (not shown in this catalog) and SS 396 identification characterize Super Sport 396. A new roof line with dramatically recessed rear window tops off the SS 396 Coupe . . . with black or new beige vinyl top if you so specify.

Consider your brand of derring-do; select from two engines: standard is a 325-hp Turbo-Jet 396 V8; a 360-hp Turbo-Jet 396 V8 awaits your say-so. New fully synchronized 3-Speed transmission with sporty floor-mounted shift lever is standard. You can order 4-Speed (floor-mounted shift lever) or automatic Powerglide.

Super Sport 396 all-vinyl interiors are roomy and sporty. Eight '66 colors: red, blue, black, bronze, white, bright blue, fawn, and turquoise. Keyed to your color scheme are deep-twist carpeting and seat belts front and rear.

All Super Sport 396 fine points aren't as apparent . . . until you sample a road, that is. Chevelle has Full Coil suspension with double-acting shock absorbers at each wheel (specially calibrated with high rate springs in SS 396) and scads of sound and vibration squelchers to cushion even the washboard lanes. Anti-dive and anti-squat are built right in. The steering is Ball-Race.

If you're an all-out enthusiast, you can outfit your Super Sport 396 with special instrumentation (including tachometer); mag-style or simulated wire wheel covers; sintered-metallic brakes; Positraction rear axle; and Strato-bucket front seats and a between-seats console, complete with a storage area and an electric clock. Check out the list of sport equipment on Page 14.

You'll find a detailed listing of extra-cost Options and Custom Features, some of which are described and illustrated in this catalog, on Page 14.



Super Sport 396 Convertible in Lemonwood Yellow.



Super Sport 396 Coupe all-vinyl interior with Strato-bucket front seats in red.



Super Sport 396 Coupe in Aztec Bronze. 5

Malibu

*Fashionable ways
certain to turn heads*

Great things have happened to the slim lines of the Malibu five for '66: all-new 4-door sport sedan, 2-door sport coupe, convertible, 4-door sedan and 2-seat station wagon. Sleek hood windsplit ornament, new grille and headlamp complex, curved side glass, new taillights and slender rear cove molding. Nothing would do but to give the new sport sedan a jaunty roof line all its own. But the sport coupe and 4-door sedan are new topside, too.

Malibu's spacious interiors are plush enough to make anyone forsake the family fireside. Deep-twist carpeting, pattern cloth and vinyl upholstery, vinyl sidewalls, front and rear foam-cushioned seats in any of four exterior-keyed colors: blue, red, fawn or turquoise. Sport coupe, sport sedan and convertible can also be ordered with an all-vinyl interior in black. In addition, a bronze interior is available for the convertible. To be sure, all-vinyl interior is standard on the convertible and wagon.

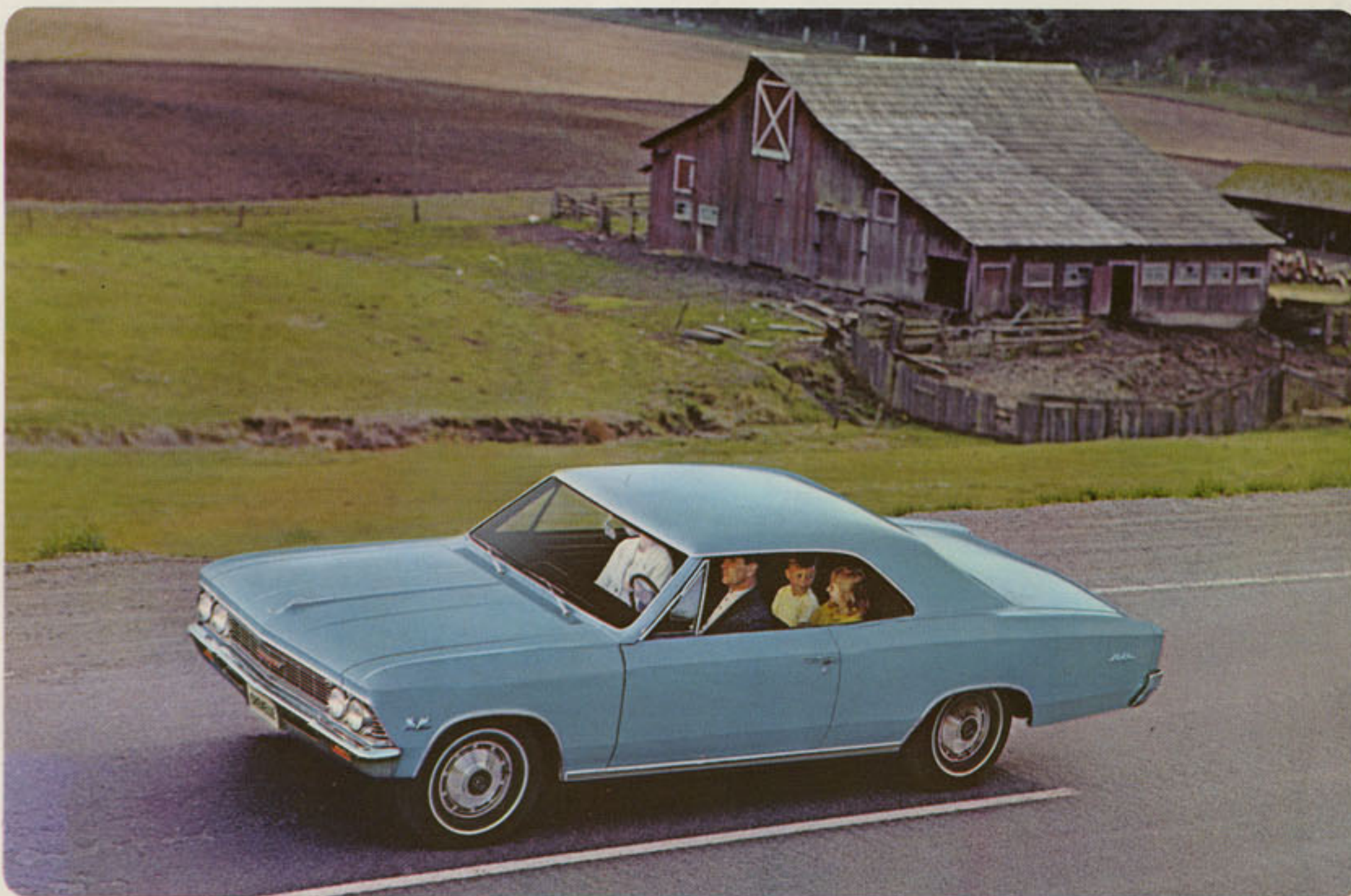
As for power, a 120-hp Hi-Thrift 194 Six or a 195-hp Turbo-Fire 283 V8 is standard (depending on the model you choose). You can specify the 140-hp Turbo-Thrift 230 Six, a 220-hp Turbo-Fire 283 V8 or a 275-hp Turbo-Fire 327 V8.

You can order Options such as Four-Season air conditioning, AM/FM radio with FM stereo, Comfortilt steering wheel, power steering, power brakes and power windows. Sport coupe and convertible can even be ordered with Strato-bucket front seats and a between-seat console. Page 14 has a list of sport equipment you can specify.

There's a lot more on Page 14 to add to the '66 Chevelle's driving pleasure. You'll find a large selection of extra-cost Options and Custom Features, some of which are shown on cars illustrated and described in this catalog.



Malibu Sport Sedan in Madeira Maroon.



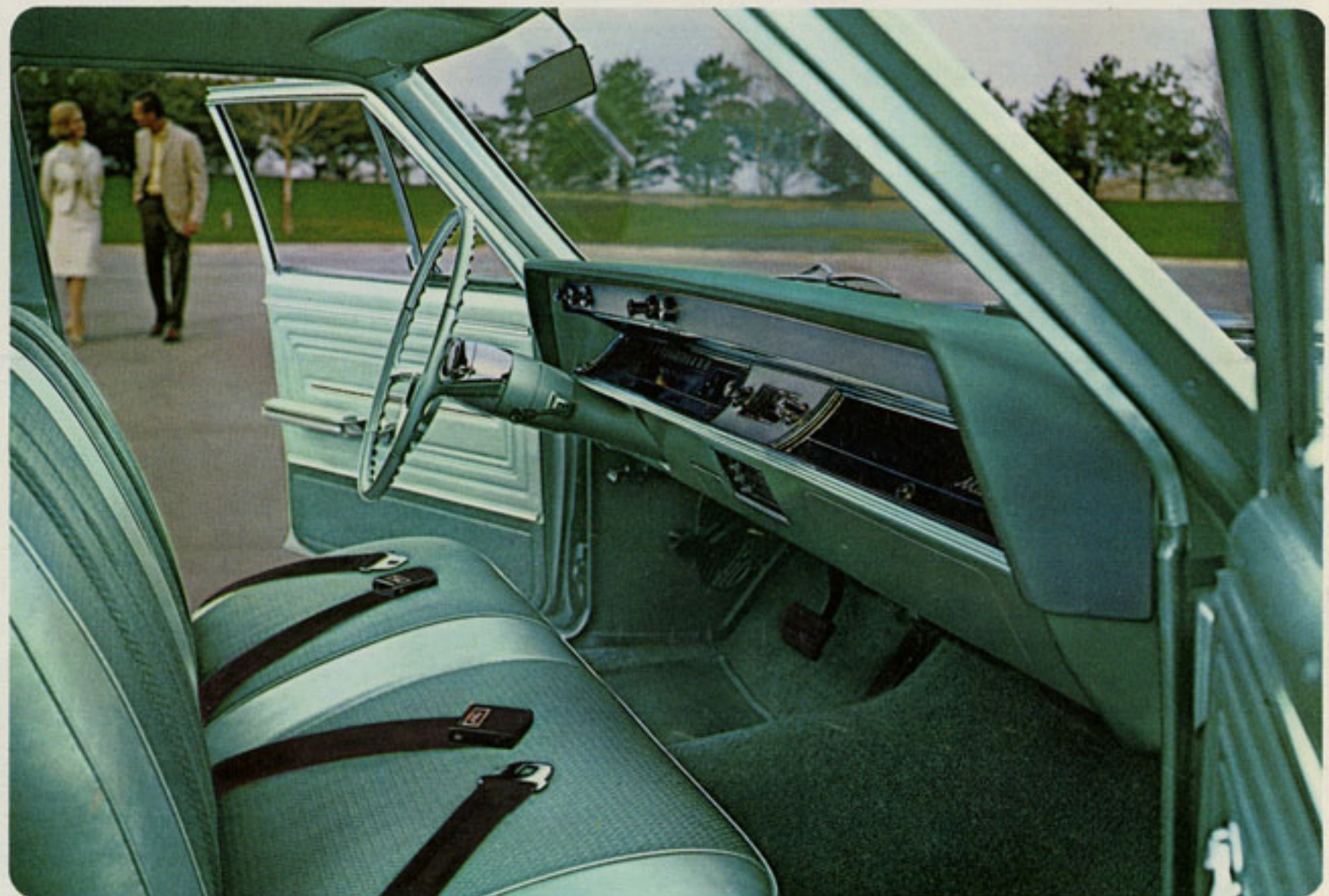
Malibu Sport Coupe in Marina Blue.



Malibu Convertible in Ermine White.



Malibu 4-Door Sedan in Sandalwood Tan.



Malibu 4-Door Sedan pattern cloth and vinyl upholstery in turquoise. 7

Chevelle 300 Deluxe

Size & style for fancy-free families

Chevelle 300 Deluxe for 1966 is just the series to fit the plans of families with a wanderlust. Every model—2- and 4-door sedans plus a strapping 4-door 2-seat wagon—has an abundance of front and rear stretch-out space. No squeeze play at the doors, either. They're wide. And the big trunk is always ready for a load. Imagine, all that space and still the fun of handling a nimble middle-sized car.

The best way to understand family feelings about the Chevelle 300 Deluxe is to try one out. Once you slip behind the handsome new steering wheel, eye the '66 Chevelle padded instrument panel and do a few make-believe downshifts, you know you're in charge. Rest assured . . . an all-welded steel perimeter-type frame surrounds the passenger compartment. Under the hood . . . power aplenty to fit family travels.

Any wise mother will be impressed by the foam-cushioned front seat, front and rear armrests and the choice of smart colors (fawn, red or blue, depending on exterior selection) in pattern cloth upholstery. She'll also appreciate the vinyl headlining, vinyl trim on seats and sidewalls and the vinyl-coated rubber floor mats. That vinyl is a breeze to clean. And kids and sticky stuff naturally travel together.

Chevelle 300 Deluxe even has something for watchful neighbors. The kind of styling that can give your whole block a lift. Trim profile tastefully accented with new rear quarter nameplates and a slender bright molding that extends the length of the body.

Trust everyone to like a few treats. Order items such as tinted glass, rear window defroster, rear door safety locks and a cruise control to regulate turnpike speeds automatically.

Give your '66 Chevelle some family touches. Select from the many extra-cost Options and Custom Features found on Page 14, some of which are illustrated and described in this catalog.



Chevelle 300 Deluxe 4-Door Sedan in Artesian Turquoise.



Chevelle 300 Deluxe 2-Door Sedan in Cameo Beige.



Chevelle 300 Deluxe 2-Door Sedan pattern cloth and vinyl upholstery in fawn.

Chevelle 300

*Young budgets
get every consideration*

The Chevelle 300's provide a strong case for the viewpoint that inexpensive cars can be very pleasant indeed. Both the Chevelle 300 2-Door and 4-Door Sedans have a distinctive grille emblem, new series nameplates, backup lights and new Chevelle hub caps. Foam-cushioned front seat, dual padded sun visors, front armrests, dome light, front and rear seat belts—unexpected niceties for such a low price tag.

The engineering quality of Body by Fisher has been a Chevelle value right from the beginning. And so has a long list of easy-care features. For a starter, flush-and-dry rocker panels. Water enter-

ing the cowl inlet ventilation system flushes rocker panels of dirt and salt . . . air dries up remaining moisture. Extended-life exhaust system stretches out the miles between replacements. Delcotron generator conserves battery life. Brakes with bonded linings adjust themselves automatically, as necessary. Inner fenders protect outer fenders from rust. Acrylic lacquer Magic-Mirror finish keeps your exterior color choice in mint-like condition.

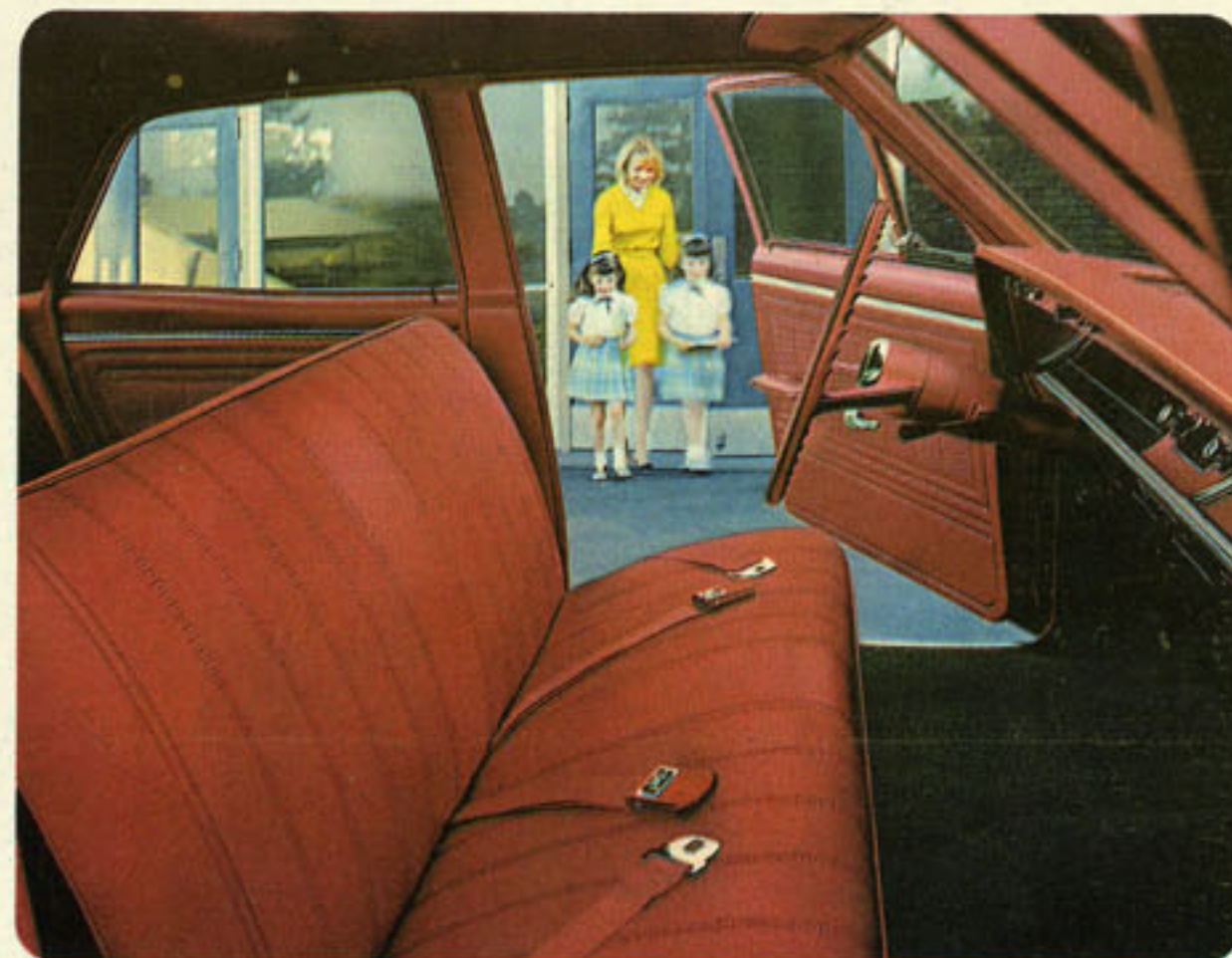
For day-in, day-out economy, the miserly ways of the standard 120-hp Hi-Thrift 194 Six are well known. Further versatility awaits your order in the 140-hp Turbo-Thrift 230 Six.

It won't take much out of your budget to equip Chevelle 300 with special touches, either. Front seat Strato-ease headrests, thinline whitewall tires and a spare wheel lock can be ordered.

Page 14 offers a large selection of extra-cost Options and Custom Features, some of which are shown on cars illustrated and described in this catalog.



Chevelle 300 4-Door Sedan in Regal Red.



Chevelle 300 4-Door Sedan pattern cloth and vinyl upholstery in red. 9



Chevelle 300 2-Door Sedan in Mist Blue.

Chevelle Wagons

*Sized for some
mighty versatile going*

Chevelle's two wagons for 1966 are built to fit your varied ways . . . from camping expeditions to country club doings. Take space, for example. The Malibu 4-Door 2-Seat Station Wagon or the Chevelle 300 Deluxe version musters a whopping 86 cubic feet of cargo area. Drop the counterbalanced tailgate and better than 9½ feet of usable space stretches out behind the front seat (with the second seat down, of course). Four doors and a tailgate opening that's 28.5" high and 54.6" wide make loading a nothing-to-it proposition. Conversion to people space is as easy as a one-step flip of the second seat.

Surrounding all that practicality, there's an easy-handling size outside with some really smart styling. From the impressive new front bumper and grille to the new vertical taillamps, '66 Chevelle wagons carry on their reputation as lookers. Inside, too. For the first time, both wagons have all-vinyl interiors. Other fine appointments: color-keyed front and rear seat belts, front and rear armrests and the new padded recessed instrument panel.

Chevelle takes care of versatile wagon power with a range of engines from 120 hp to 275 hp. You can strike a personal blow for even greater wagon versatility by ordering additional '66 equipment. Roof luggage carrier expands cargo capability. Convenient electric control for tailgate window. Superlift air-adjustable shock absorbers keep heavy loads on an even keel. And if a trailer looms large in your plans, specify a trailer hitch and car-to-trailer wiring harness.

Move out smartly with your choice of Chevelle extra-cost Options and Custom Features for 1966. Many are described and illustrated in this catalog. Check Page 14 for a wide listing.



Wide-opening tailgate offers accessibility in the Malibu wagon.



Malibu 4-Door 2-Seat Station Wagon in Aztec Bronze.



Chevelle 300 Deluxe 4-Door 2-Seat Station Wagon in Ermine White.



Chevelle 300 Deluxe Station Wagon all-vinyl interior in blue. 11

Quality Chevrolet features you'll find in the '66 Chevelle

Standard Engines

(Depending on the model selected)

120-hp Hi-Thrift 194—This economical six features short-stroke design with 194-cu.-in. displacement. Hydraulic valve lifters. Single-barrel carburetor and automatic choke for optimum fuel economy. Modified-wedge combustion chambers with 8.5:1 compression ratio. Tough seven-main-bearing crankshaft. Efficient oil-wetted polyurethane-element air cleaner. Full-flow oil filter.

195-hp Turbo-Fire 283 V8—Economy coupled with V8 efficiency. Features include: 283-cu.-in. displacement, short-stroke design, two-barrel carburetor, automatic choke and 9.25:1 compression ratio. Also equipped with positive-shift starter, hydraulic valve lifters, oil-wetted paper-element air filter and positive-type crankcase ventilation.

325-hp Turbo-Jet 396 V8—The 325-hp Turbo-Jet 396 V8 features a new high-efficiency design and four-barrel carburetion. Cylinder heads have individually spaced inlet and exhaust ports. Chrome rocker covers, air cleaner and oil filler cap. Valves, valve ports and combustion chambers engineered for maximum volumetric efficiency. Strong cast aluminum pistons with a close-bore fit for quiet operation, durability, excellent oil and compression control. 396-cu.-in. displacement; compression ratio 10.25:1. Standard on Super Sport 396 models only.

Extra-Cost Optional Engines

140-hp Turbo-Thrift 230—Chevelle's largest six is a 230-cu.-in. power plant. Short-stroke design features 8.5:1 compression ratio, hydraulic valve lifters, automatic choke, rugged seven-main-bearing crankshaft. Oil-wetted polyurethane-element air

cleaner. Controlled-pressure lubrication system with full-flow oil filter.

220-hp Turbo-Fire 283 V8—The 220-hp Turbo-Fire 283 V8 features four-barrel carburetor and dual exhaust system. 283-cu.-in. displacement with hydraulic valve lifters, wedge-type combustion chambers and 9.25:1 compression ratio. Positive-type engine ventilation. Controlled-pressure lubrication. Full-flow oil filter and oil-wetted paper-element air filter.

275-hp Turbo-Fire 327 V8—New for 1966, this V8 makes a frolic out of expressway or city going. Short-stroke design with 327-cu.-in. displacement, four-barrel carburetor, automatic choke, hydraulic valve lifters and 10.5:1 compression ratio. Oil-wetted paper-element air cleaner. Large-diameter single exhaust system.

360-hp Turbo-Jet 396 V8—Top-output engine for 1966 Chevelle features four-barrel carburetion. Chrome rocker covers, air-cleaner and oil filler cap. Cast aluminum pistons have a close-bore fit to provide quiet operation, durability and outstanding oil and compression control. 396-cu.-in. displacement; 10.25:1 compression ratio; large dual exhaust system; special camshaft. Available only on Super Sport 396 models.

Standard Transmission

Fully Synchronized 3-Speed—Permits smooth downshift from second to first without full stops for maximum flexibility. All gears, including first and reverse, are in constant mesh. Wide helical gears,

large synchronizers and high-capacity front and rear ball bearings. Gear ratios match engine.

Extra-Cost Optional Transmissions

Fully Synchronized 4-Speed—Sporty floor-mounted 4-Speed shift lever. All forward gears synchronized for effortless up-and-down shifting and versatility. Gear ratios matched to engines. Helical gear design. Aluminum housing with 396 V8's. Engineered to prevent unintentional shifts into reverse.

Economical Overdrive—At about 30 mph, Overdrive is semi-automatically engaged. Planetary gears work with the fully synchronized 3-Speed unit for fuel economy and reduced engine wear.

Automatic Powerglide—Three-element torque converter with hydraulically controlled 2-speed planetary gears. Selector indicator reads: Park (a positive parking lock)—R—N—D—L.

Chevelle Power Teams

Standard Engines	Fully Synchronized 3-Speed	Overdrive	Fully Synchronized 4-Speed	Automatic Powerglide
120-hp Hi-Thrift 194 Six*	●	●		●
195-hp Turbo-Fire 283 V8*	●	●	●	●
325-hp Turbo-Jet 396 V8†	●		●	●
Extra-Cost Optional Engines				
140-hp Turbo-Thrift 230 Six*	●	●		●
220-hp Turbo-Fire 283 V8*	●	●	●	●
275-hp Turbo-Fire 327 V8*	●		●	●
360-hp Turbo-Jet 396 V8†	●		●	●

†Available only on Super Sport 396. *Not available on Super Sport 396.

Body by Fisher

Traditionally outstanding craftsmanship. Roof, sides and floor welded together to form a single all-steel unit. Efficient cowl-top ventilation system is built in. The body is specially sealed and insulated against weather and sound. To help dampen road shock, large rubber mounts are used to attach body to frame.

Magic-Mirror Finish—Nine-step Magic-Mirror acrylic lacquer finish protects Chevelle's 15 colors against chipping, sun-fading and the corrosion of salt and road tar.

Ignition Switch—New push-turn gate prevents accidental turning of the key to accessory position. Four-position convenience.

Chassis

Perimeter-Type Frame—All-welded steel unit with full-length side rails joined laterally by three crossmembers surrounds the passenger compartment. Welded torque-box design adds rigidity and strength without excessive weight. Built-in supporting structures for front and rear suspension.

Full Coil Suspension—Husky steel coil spring plus a direct-acting double-action shock absorber at each wheel. Front stabilizer bar and built-in levelizing action for added stability. Independent front suspension with wishbone lower control arms and rubber-isolated front suspension pivots. Four-link rear suspension with anti-squat design and rubber-insulated rear suspension links.

Ball-Race Steering—Smooth, precise control with precision Ball-Race gear. Parallel relay steering

linkage mounted ahead of front wheels; recirculating ball nut steering gear with rubber cushioned steering shaft. Overall steering ratio of 28.0:1.

Clutch—Diaphragm spring type (semi-centrifugal on 283 V8 engines with 4-Speed transmission and 327 V8 and 396 V8 engines with manual transmissions). Single dry disc, spring-cushioned, sealed-in lubricant release bearing. Size and pressure matched to engine.

Wheels and Tires—14" wheels are standard equipment on all models. For specific details on tire sizes, appearance features and availability with car models, see your Chevrolet dealer.

Dimensions—Wheelbase, 115". Overall length of station wagons, 197.6"; all other models, 197.0". Height: sedans, 53.0"; station wagons, 54.6"; sport coupes, 51.9"; convertibles, 52.8". Wheel tread, front and rear, 58.0". Overall width, 75.0".

Standard Comfort and Convenience Items

For your motoring pleasure, every '66 Chevelle now comes equipped with an outside rearview mirror; padded instrument panel; padded sun visors; two-speed, glare-reducing windshield wipers and washers; backup lights; and shatter-resistant inside rearview mirror. (These items are not necessarily illustrated throughout this catalog.)

Easy-Care Features

Inner Steel Fenders—Four inner fenders protect outer fenders, headlamp housings, trunk and rear quarter panel sheet metal from the corrosive action of road tar and salt.

Flush-and-Dry Rocker Panels—Water entering the cowl inlet ventilation system is directed to the rocker panels where it flushes dirt out through built-in drains. Incoming air follows the same channels and dries panel interiors. Galvanized rocker panels provide added protection.

Extended-Life Exhaust System—Aluminizing (stainless steel, too, for dual exhaust systems) in critical areas, plus sturdy tailpipes, means fewer replacements and more miles of quiet motoring.

Self-Adjusting Safety-Master Brakes — 9½-inch hydraulic brakes with 168.9 sq. in. of lining surface and large cylinders. Bonded linings offer long life; venting through wheel slots contributes to more efficient cooling. Pressure applied to the brake pedal when backing up automatically adjusts brakes if necessary.

Delcotron Generator—Delcotron unit is extremely durable because there's no commutator to wear out. Even at low engine speeds, Delcotron continues to put out electrical power to help extend battery life. 9-37 ampere Delcotron is standard. Other extra-cost Delcotron units of 12-42, 5-61 and 23-62 ampere available. Standard 12-volt battery with 44-ampere-hour rating (61-ampere-hour with 327- and 396-cu.-in. V8 engines).

Extra-cost trimmings to match your personal needs†

Engines—140-hp Turbo-Thrift 230 Six/220-hp Turbo-Fire 283 V8/275-hp Turbo-Fire 327 V8/360-hp Turbo-Jet 396 V8.

Transmissions—Overdrive/Powerglide/Fully Synchronized 4-Speed.

Comfortilt Steering Wheel—Adjusts to any of seven positions to suit the man (or woman) behind the wheel. Can be raised with the flick of a lever for more comfortable entry and exit.

Cruise Control—A boon for turnpike traveling. Maintains constant speed to your liking automatically. Cruise control warns driver against exceeding the preset speed. Merely touching the brake releases the system and allows normal braking control.

Power Steering—Hydraulic unit integral with the steering gear takes most of the work out of cornering and parking. Overall power steering ratio is 20.4:1 to provide faster steering response.



Power Brakes—Large power cylinder reduces braking effort by nearly one-third. Low pedal height for quick application. Big vacuum reserve supplies extra braking power.



Special Sport Equipment—Ask your Chevrolet dealer about all the sport items including: Strato-bucket front seats available in fawn, red, bright blue, black, bronze and white (SS 396 only); between-seat console (with bucket seats only) with electric clock and storage area (includes floor-mounted transmission shift lever on Super Sport 396, floor-mounted 4-Speed and Powerglide shift levers for Malibu); sport instrumentation with ammeter, water temperature and oil pressure gauges; tachometer (included in instrumentation package with V8 engines); full-transistor ignition system (Super Sport 396 only); mag-style or simulated wire wheel covers; sintered-metallic brakes; sports-styled steering wheel with elegant look of walnut. Many of these items are available on Super Sport 396 and Malibu Sport Coupe and Convertible only.



Four-Season Air Conditioning—Let the weatherman do his worst. Four-Season air conditioning cools, cleans, and dehumidifies inside or outside air to keep you fresh on any jaunt. Combined with Chevelle's standard blended-air heater, you can easily select temperature and humidity.

Four-Way Power Seat—Allows any driver to adjust seating position to suit his fancy. Seat moves up and down, backward and forward electrically at the touch of a control. Available for driver's bucket seat or for front bench seat.

Power Windows—Master control beside the driver's seat operates all windows. Additional control at each window allows passengers to regulate their own doses of outside air.

Positraction Rear Axle—On ice, snow, mud or sand, if one rear wheel has traction, you go. Positraction is available with all Chevelle power teams.

Soft-Ray Tinted Glass—Helps screen out glare from the sun by day . . . oncoming headlights at night. Soft-Ray tinted glass is available for all windows or for windshield only.



All-Transistor Radios—You get instant music (or sports or news) with Chevelle's '66 radio lineup: manual AM, pushbutton AM, pushbutton AM/FM or pushbutton AM/FM with FM stereo multiplex equipment. Power and manual rear antennas and rear seat speaker are available.

Additional Extra-Cost Equipment†

Front and rear bumper guards. Adjustable front seat Strato-ease headrests. Black or beige all-vinyl roof cover. Roof luggage rack for wagons. Deck lid luggage rack. Sports-styled steering wheel with elegant look of walnut. Sweep second hand electric clock. Spare wheel lock. Mag-style wheel covers. Simulated wire wheel covers. Vented wheel covers. Spare wheel and tire cover. Rear door safety locks for all 4-door models. Windshield-mounted compass. Tri-Volume horn. Tool kit. Convertible power-operated folding top. Glove compartment lamp (Chevelle 300 Deluxe and Chevelle 300 only). Whitewall tires. Station wagon rear-window air deflector. Power-operated tailgate window for wagons. Tachometer. Heavy-duty battery. Heavy-duty radiator. Heavy-duty clutch. Dual exhaust (only with 275-hp and 325-hp engines). Temperature-controlled fan. Heavy-duty 5-61 amp., 12-42 amp., or 23-62 amp. Delco-tron generators. Sintered-metallic brakes. Superlift air-adjustable rear shock absorbers. Special front and rear suspension. 3.31, 3.36 or 3.73 rear axle ratios. Color-matched custom deluxe dual front and rear seat belts (with front retractors only). Rear window defroster. Parking brake alarm. Portable spotlight. Traffic hazard lamp switch. Gas tank filler lock. Tissue dispenser. Twin or full-width front and rear floor mats. Non-glare inside rearview mirror. Remote-control outside rearview mirror.

†Check your Chevrolet dealer for availability of Chevelle extra-cost Options and Custom Features by model and series.

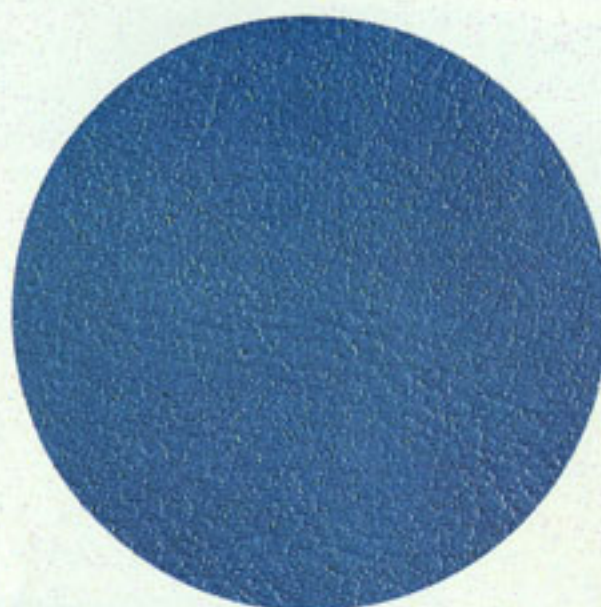


Smart tones & durable fabrics

Lustrous Magic-Mirror finish will help maintain your Chevelle's new appearance with little more than an occasional wash. Depending on model, up to 15 exterior colors (six are brand-new for '66) and seven two-tone combinations are available.

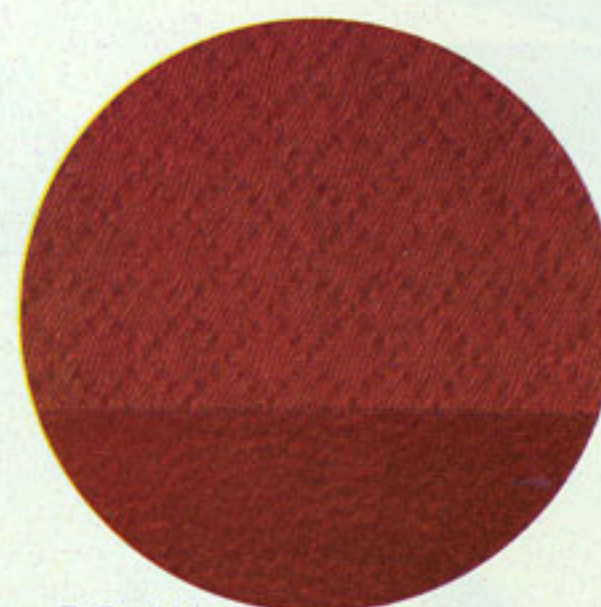
The new Chevelle interior fabrics are created for superior service . . . will retain their showroom beauty with a minimum of care. Interior color choice is keyed to your selection of exterior color.

*Exclusive for Super Sport 396 and Malibu.



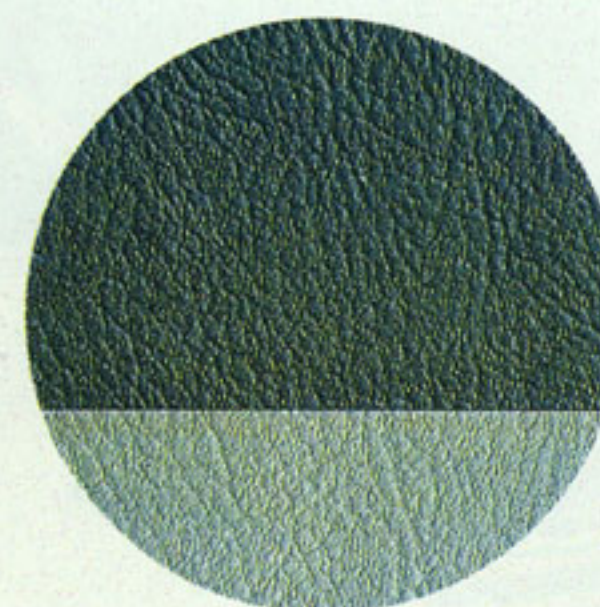
Super Sport 396

All-vinyl in bright blue. (Also comes in red, black, blue, bronze, white, fawn or turquoise.)



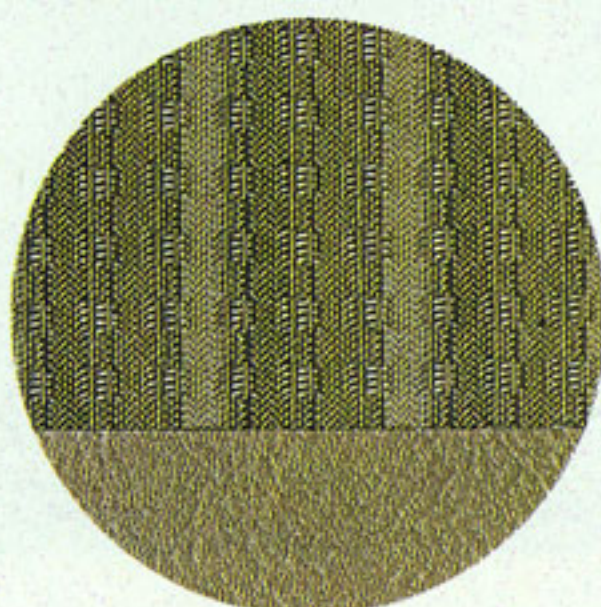
Malibu

Pattern cloth and vinyl in red. (Also comes in blue, fawn or turquoise for sport coupe, sport sedan and 4-door sedan.)



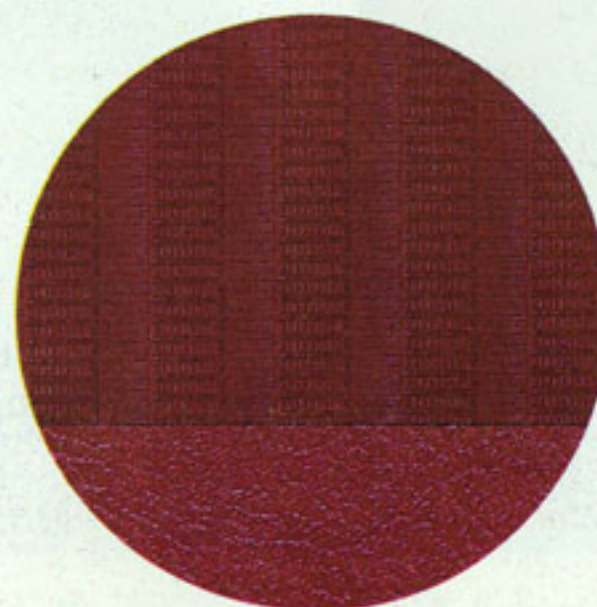
Malibu

All-vinyl in turquoise for convertible and wagon. (Comes in red, fawn, or blue; bronze for convertible only. Black can be specified for convertible, sport coupe and sport sedan.)



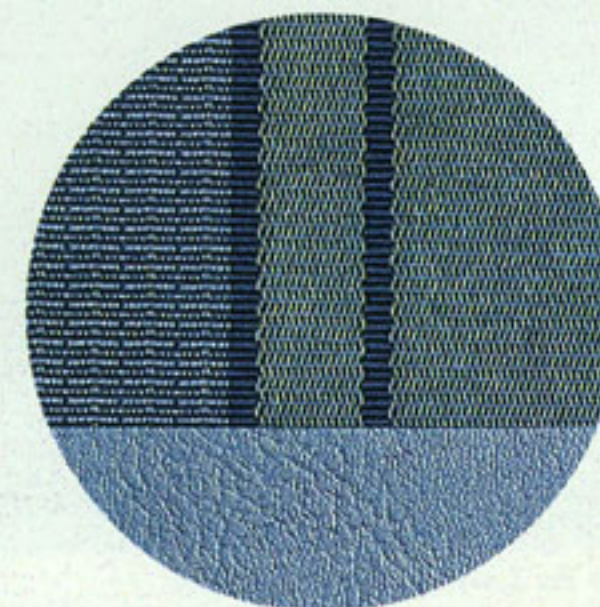
Chevelle 300 Deluxe

Pattern cloth and vinyl in fawn for 2- and 4-door sedans. (Also comes in red or blue.)



Chevelle 300 Deluxe

All-vinyl in red for station wagon only. (Also comes in fawn or blue.)



Chevelle 300

Pattern cloth and vinyl in blue. (Also comes in fawn or red.)



Super Sport 396 Coupe in Lemonwood Yellow.

All illustrations and specifications contained in this literature are based on the latest product information available at the time of publication approval. The right is reserved to make changes at any time without notice in prices, colors, materials, equipment, specifications and models, and also to discontinue models. Chevrolet Motor Division, General Motors Corporation, Detroit, Michigan 48202.
Litho in U.S.A.

