

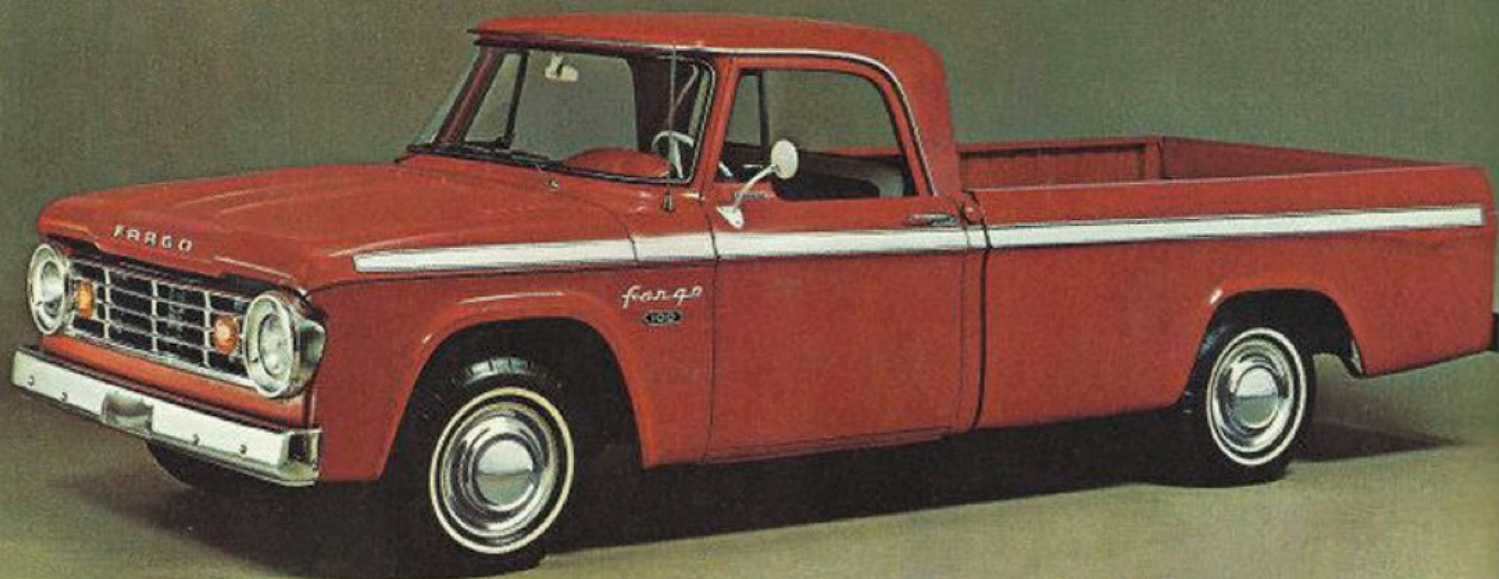
FARGO

LIGHT-DUTY TRUCKS



FARGO SWEPTLINE PICKUPS D100 & 200 GVW: 4300 to 7500 lbs.

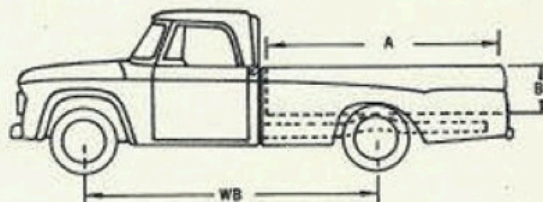
Here's a beautiful way to load up and light out. This one has a big, smooth, *double-wall* pickup box that's extremely easy to load. But what really makes Fargo the smartest buy in a pickup is the extra stamina Fargo puts into every truck component—in the cab, in the cargo box, in the engine, and in the suspension. Fargo builds tough, long-lasting pickups . . . at competitive prices. (For proof of *how tough*, see the back cover of this catalogue.) The good-looking Sweptlines shown here are available in two models on two wheelbases, with GVW's from 4300 to 7500 lbs.—payloads to 3370 lbs.



D100 SWEPTLINE ON 128" WHEELBASE

STANDARD EQUIPMENT

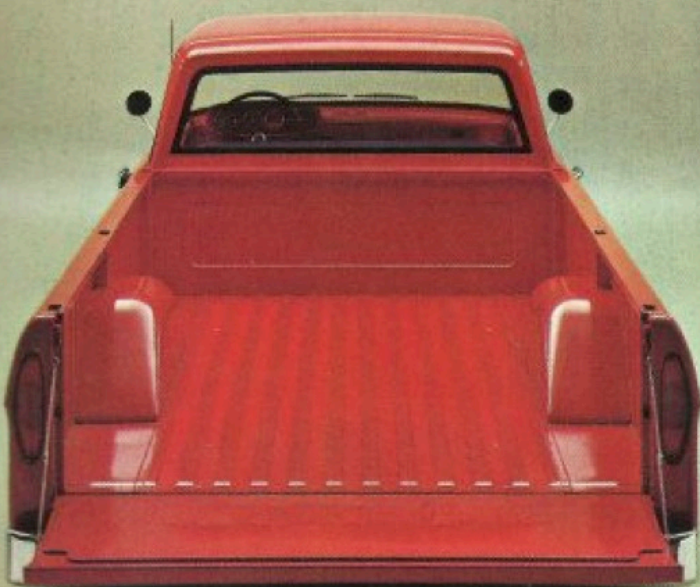
- 140 hp. 225 cu. in. Fargo Slant Six engine
- Oil filter—1 qt. repl. element
- Closed crankcase ventilation
- 37-amp. alternator
- 3-speed synchro-shift transmission, column-mounted
- Self-adjusting brakes
- Front and rear Oriflow shock absorbers
- Painted front bumper
- Turn signals
- Left-side exterior mirror
- Dome light
- Ashtray
- Door locks—both doors
- Coat hook
- 6-way adjustable seat
- Vinyl seat upholstery
- Driver's sun visor
- Rubber floor mat
- Orscheln adjustable hand brake (inside cab)
- High-level ventilation
- Electric windshield wipers (single speed)
- Mechanical axle jack and wheel wrench (D100, D200)
- Spare wheel and tire (D100)
- Spare wheel only (D200)



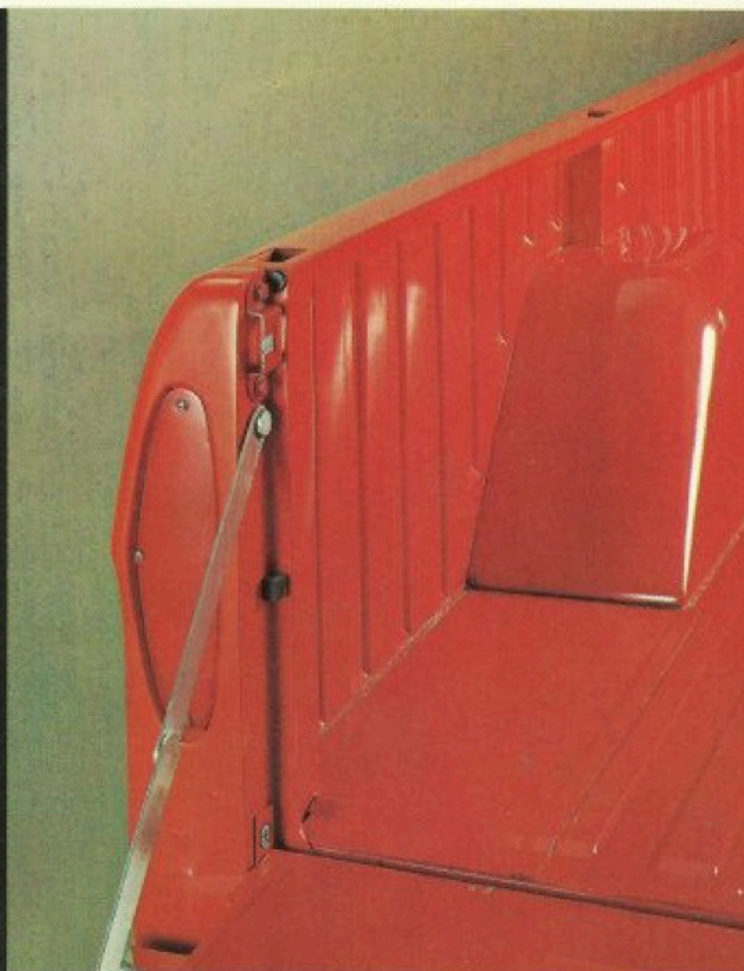
MODEL	D100	D200
Wheelbase (WB)	114"	128"
Nominal inside length (A)	78.8"	96.0"
Inside width (max.)	70.0"	70.0"
Width between wheelhousings	49.0"	49.0"
Height—top of sides and tailgate (B)	20.0"	20.0"
Capacity—(water level) cu. ft.	59.3"	75.0"

SWEPTLINE BOX FEATURES

Never has a pickup box had so many good ideas to make it so easy to load and so durable. And only Fargo has it. The sides of the Fargo Sweptline box have full-depth double wall construction—not just two-thirds of the way up as on other double wall pickups. You can batter and bruise the inside of the box with no show on the outside. Fargo full-depth double wall also permits a one-piece outer skin, with no horizontal joints to collect rust and make the truck look old before its time. The floor on the Sweptline box is all-steel. The wheel housings are flat on top to make them more practical for cargo space or as handy, out-of-the-way spots for toolboxes and such. The full-width tailgate (65 inches wide) stretches all the way out to the sides of the box. And it has an extra-sturdy latching mechanism that lets you open the gate or slam it shut with one hand. Hinged steel straps (not chains) support the gate. And the straps can be unhooked to drop the gate completely. Also, Sweptline gives you a choice of two roomy bodies—a 6½-foot box with 59.3 cubic feet of cargo space, or an 8-foot box with 75 cubic feet.



6½- OR 8-FOOT BOX WITH FULL-WIDTH TAILGATE



FULL DOUBLE-WALL CONSTRUCTION—ALL THE WAY UP



ONE-PIECE OUTER SKIN WITH NO RUST-COLLECTING POCKETS



ONE-HAND TAILGATE LATCH

FARGO UTILINE PICKUPS

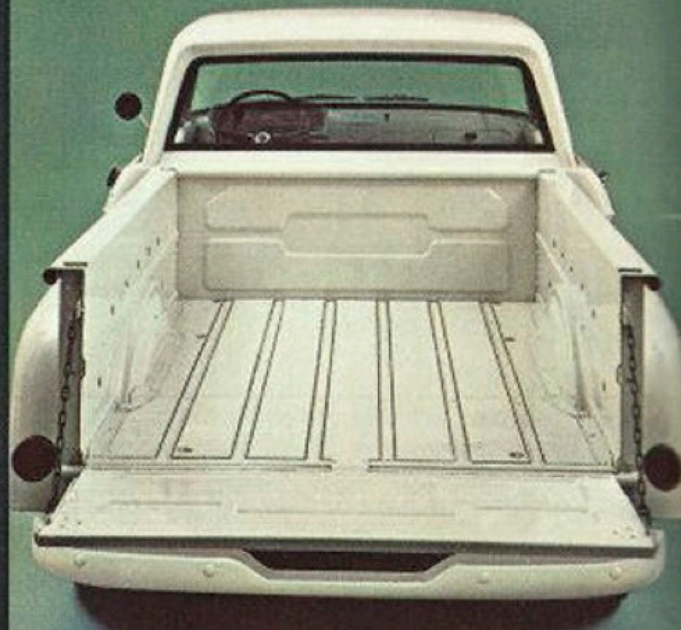
D100, D200, D300

GVW: 4300 to 10,000 lbs.

Fargo Utilines put the pickup box between the rear wheels for a straight, unobstructed load space and to provide running boards outside the box for easy side loading. The box comes in three lengths, 6½-, 8-, or 9-feet, (see chart below). All have seasoned hardwood floors with steel skids. GVW's run from 4300 lbs. all the way up to 10,000 lbs., with payloads up to 5740 lbs. Engine choices are the extra-tough, Fargo 140 hp Slant Six or optional Fargo 200 hp V8. D100 and D200 models have the same sturdy chassis components as the Sweptlines, including a drop-center frame that gives you a low-slung cab for easy ins and outs. The big D300 Utiline has a straight truck frame, 4-speed transmission, and offers optional dual rear wheels.



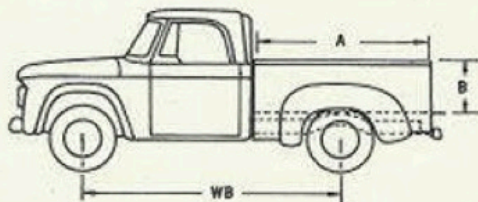
D100 UTILINE ON 114" WHEELBASE



6½-, 8-, OR 9-FOOT BOX

STANDARD EQUIPMENT

- 140 hp. 225 cu. in., Fargo Slant Six engine
- Oil filter—1 qt. repl. element
- Closed crankcase ventilation
- 37-amp. alternator
- 3-speed synchro-shift transmission (4-speed on D300)
- Self-adjusting brakes (D100, D200)
- Painted front bumper
- Turn signals
- Left-side exterior mirror
- Dome light
- Ashtray
- Door locks—both doors
- Coat hook
- 6-way adjustable seat
- Vinyl seat upholstery
- Driver's sun visor
- Rubber floor mat
- Orscheln adjustable hand brake (inside cab)
- High-level ventilation
- Electric windshield wipers—single speed
- Mechanical axle jack and wheel wrench
- Spare wheel and tire (D100)
- Spare wheel only (D200)



MODEL	D100	D200	D300
Wheelbase (WB)	114"	128"	133"
Nominal inside length (A)	78.1"	96.0"	108.0"
Inside width (max.)	54.0"	54.0"	54.0"
Width between wheelhousings	49.0"	49.0"	49.0"
Height—top of sides and tailgate (B)	20.0"	20.0"	20.0"
Capacity—(water level) cu. ft.	47.25	58.5	66.0

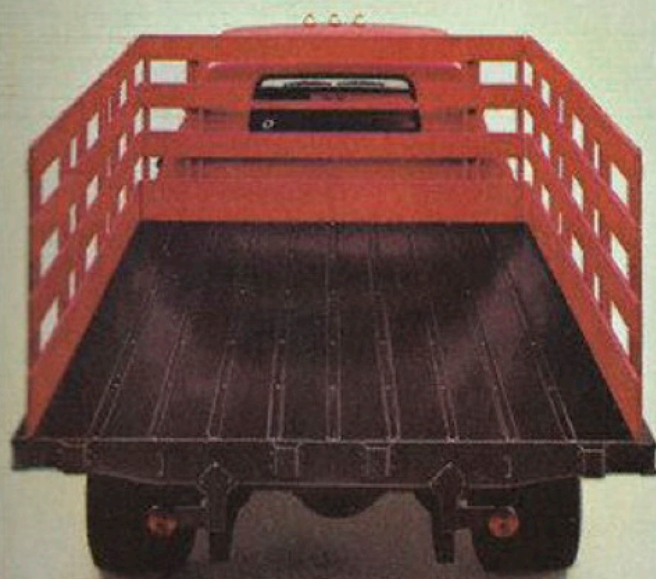
FARGO CHASSIS-CAB MODELS

D100, D200, D300

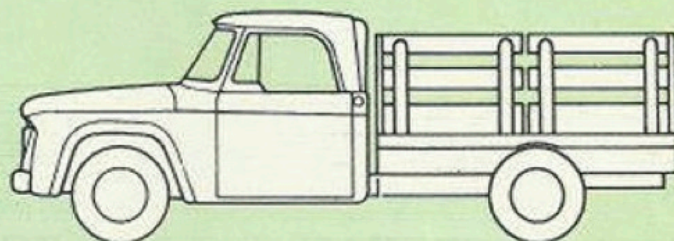
GVW: 4300 to 10,000 lbs.

Fargo D100, 200's and 300's are also available as Chassis-Cabs on which you can install your own type of body—a stake, van, wrecker, utility or whatever body you choose. The D100 Chassis-Cab has two wheelbase choices and GVW ratings of 4300 or 5200 lbs. D200 has a 128" wheelbase and GVW's of 5200, 6000, or 7500 lbs.

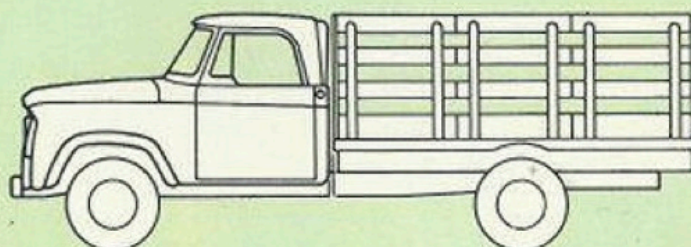
The D300 has a 133" wheelbase and three GVW's from 5500 to 10,000 lbs. There's even a W300 4-wheel drive Chassis-Cab for off-the-road service, and a D200 Chassis Crew Cab for 6-man "work crew" transportation.



D300 CHASSIS-CAB WITH A 9-FOOT BODY AND
OPTIONAL DUAL REAR WHEELS



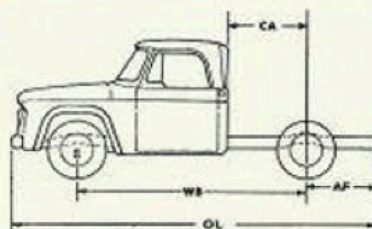
D200 CHASSIS-CAB WITH 7 1/2-FOOT STAKE BODY



W300 4-WHEEL-DRIVE CHASSIS-CAB WITH 9-FOOT STAKE BODY

STANDARD EQUIPMENT D100, D200, D300

- 140 hp. 225 cu. in. Fargo Slant Six engine
- Oil filter—1 qt. repl. element
- Closed crankcase ventilation
- 37-amp. alternator
- 3-speed synchro-shift transmission (4-speed on D300)
- Self-adjusting brakes (D100, D200)
- Turn signals
- Painted front bumper
- Left-side exterior mirror
- Dome light
- Ashtray
- Door locks—both doors
- Vinyl seat upholstery
- 6-way adjustable seat
- Driver's sun visor
- Dispatch box
- Coat hook
- Rubber floor mat
- Orscheln adjustable hand brake (inside cab)
- High-level ventilation
- Electric windshield wipers—single-speed
- Oriflow shock absorbers (front only on D300)
- Spare wheel and tire (D100)
- Spare wheel only (D200)
- Mechanical axle jack and wheel wrench (D100, D200)
- Single electric horn



MODEL	D100	D200	D300
WB—Wheelbase	114"	128"	133"
CA—Cab to rear axle	40"	54"	60"
AF—Rear axle to end of frame	39.3"	45.9"	46.5"
OL—Overall length	185.3"	205.9"	212.5"

FARGO TOWN WAGON & PANEL: D100

GVW: 4300 and 5200 lbs.

If you'd like to find out how tough a truck can be, talk to the people who buy Fargo Town Panels or 8 passenger Town Wagons. They'll tell you how rugged construction, high ground clearance, and a very maneuverable 114" wheelbase get them into places that stop other panels cold. Both the Town Panel and Town Wagon (with second and third seats removed) can carry close to a $\frac{3}{4}$ ton cargo. They have a flat 7 $\frac{1}{2}$ -foot floor, wide double rear doors and a step-type rear bumper. Both are powered by a reliable 140 hp Slant Six or optional 200 hp V8 engine with a wide choice of transmissions. Also available with 4-wheel drive to go anywhere, road or no road.



D100 TOWN PANEL AND TOWN WAGON ON 114" WHEELBASE

STANDARD EQUIPMENT

- 140 hp, 225 cu. in. Fargo Slant Six engine
- Oil filter—1 qt. repl. element
- Closed crankcase ventilation
- 37-amp. alternator
- 3-speed synchro-shift transmission, column-mounted
- Self-adjusting brakes
- Front and rear Oriflow shock absorbers
- Painted front bumper and step-type rear bumper
- Dual headlights
- Turn signals
- Left-side exterior mirror
- Ashtray
- Door locks—All doors
- Vinyl seat upholstery
- Spare wheel and tire
- Driver's sun visor plus right visor on Wagon
- Orscheln adjustable hand brake (inside cab)
- High-level ventilation
- Electric windshield wipers—variable-speed
- Mechanical axle jack and wheel wrench
- Dual tail lamps
- Dome light

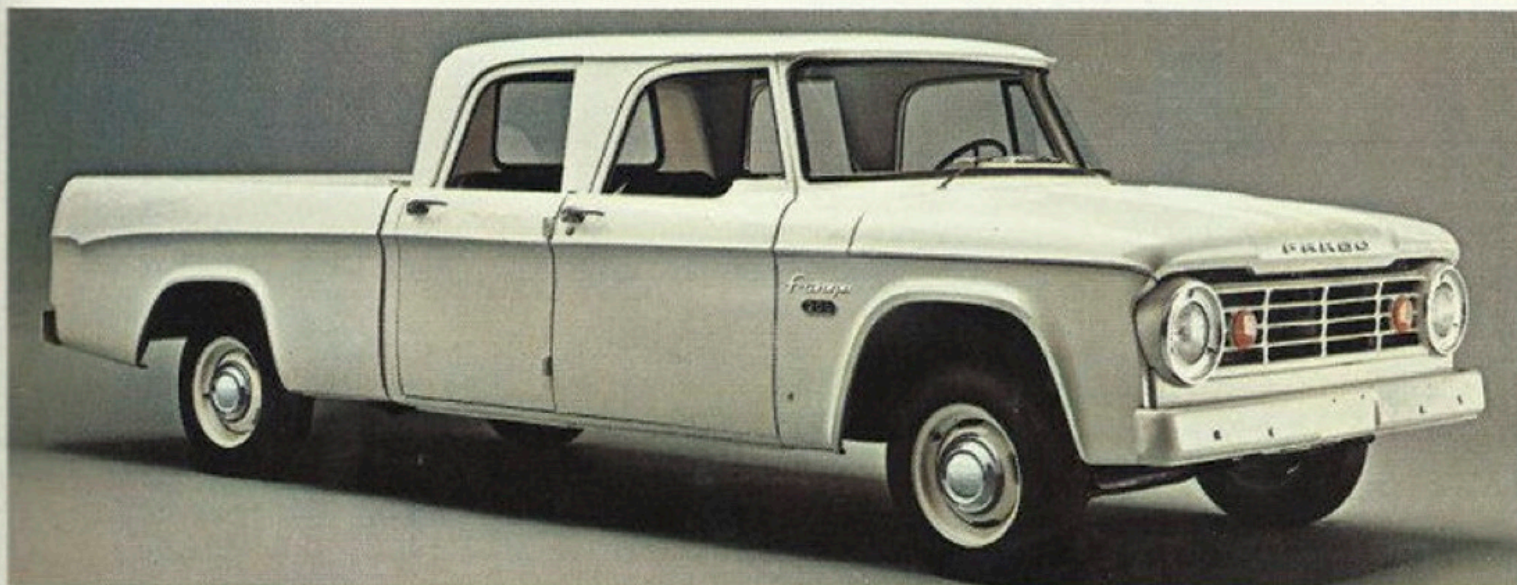
DIMENSIONS

Wheelbase	114.0"
Load length at floor (driver's seat in center position)	94.7"
Interior height	52.8"
Floor width, maximum	65.3"
Width between wheelhousings	50.1"
Rear doors, width (max. @ floor)	50.2"
Load space (cubic feet)	155.0
Outside width (rear fenders)	75.1"
Maximum overall length	197.2"
Wagon load space—centre and rear seat removed	94.7"
—rear seat only removed	58.7"

FARGO D200 CREW-CABS

GVW: 5200 to 7500 lbs.

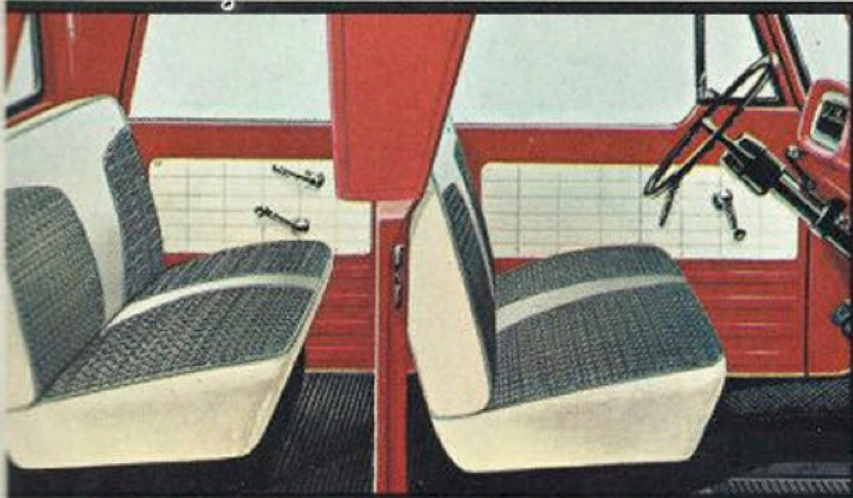
Handiest way to transport a "work crew" of six and a big load of materials in one sturdy vehicle. Perfect for contractors, service crews and even farm families and campers. Fargo Crew Cabs are lower priced because they are factory production models. Most other makes cost more, because you have to order a chassis-cowl and then custom-order a crew cab body. Fargo Crew Cab pickups with a 6½-foot box are available as either a Sweptline or Utiline with conventional drive (D200) or 4-wheel-drive (W200). Standard engine for all is the highly efficient Fargo 140 hp Slant Six 225. Optional is a 200 hp 318 V8. Also available as chassis Crew-Cab.



STANDARD EQUIPMENT: D200 MODELS

- 140 hp, 225 cu. in. Fargo Slant Six engine
- Oil filter—1 qt. repl. element
- Closed crankcase ventilation
- 37-amp. alternator
- 3-speed synchro-shift transmission, column-mounted
- Self-adjusting brakes
- 10" clutch
- 4.70 section modulus frame
- 3800-lb. front axle
- 5500-lb. rear axle
- 212 sq. in. of brake lining
- Front and rear Oriflow shock absorbers
- 1750-lb. front springs
- 1750-lb. rear springs
- Turn signals
- Painted front bumper
- Left-side exterior mirror
- Vinyl seat upholstery
- Coat hook
- Orscheln adjustable hand brake (inside cab)
- High-level ventilation
- Electric windshield wipers—single speed
- 6.50 x 16—6 PR Tubeless tires

SEE FARGO 4-WHEEL-DRIVE CATALOGUE FOR EQUIPMENT OF FARGO W200 CREW CAB PICKUPS



CREW-CAB COMFORT

Fargo's big, sturdy Crew Cab has plenty of room in all dimensions for six burly six-footers and provides the crew with passenger car comfort and protection from the elements. Handsome two-tone vinyl upholstery and durable foam-padded coil spring seats are standard. You won't find a Crew Cab anywhere that can match them for style and convenience. The rear seat can be removed to provide additional inside cargo space.

FARGO PICKUP CAB FEATURES

You get more comfort, more durability from a Fargo pickup because Fargo puts more into its cab. The seat, for example, is adjustable six ways to perfectly fit the driver. It's built like a premium seat, too, for excellent durability, with an extra-thick frame and 48 coil springs topped by cotton and thick foam pads. And if you'd like to have "super" comfort or a dressier look to the cab, Fargo offers a complete range of cab options, including the Custom Package shown below.

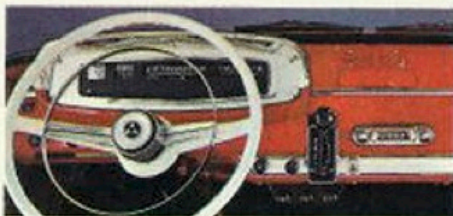


STANDARD CAB—This one's roomy, comfortable and easy to live with. And that handsome, black-and-tan fabric and vinyl upholstery with white vinyl bolsters is standard. Also standard are a tough, coil-spring seat, driver's sun visor, dome light, ashtray, dispatch box, key lock on both doors, coat hook, rubber floor mat, high-level ventilation, and an adjustable Orscheln-lever hand brake.



OPTIONAL CUSTOM PACKAGE—Add these "super" comfort features to the standard cab: a full-depth foam rubber seat and foam-padded seatback, deluxe fabric and vinyl seat upholstery, dual armrests, right sun visor, cigar lighter, and extra cab insulation. This breathable fabric lets air circulate for cool comfort. Available in red, turquoise, or blue depending on the truck color.

In addition to these comfort features, the Custom Package also includes appearance items for both the outside and inside of the cab. Outside, it includes a chrome grille, bright drip mouldings, and mylar trim around the windshield and rear window, and "Custom" nameplates. Inside the cab, it adds a bright-metal "face" to the instrument cluster and around the control knobs, a bright-finish dashboard moulding, plus textured metal trim panels on the doors. D100 and D200 models also include a white steering wheel and chrome horn ring with this low-cost package.



OPTIONAL SWEPTLINE SIDE MOULDING—Adds a bolder, more distinctive look to the sides of Sweptline pickups. Full-length, bright-metal mouldings are filled with white or black paint, depending on the truck color.

Note: Custom Package and Side Mouldings are not available on Crew Cab pickups.

FARGO OPTIONS & ACCESSORIES

You'll find your Fargo truck well-suited to the job just as it is. However, should you have additional requirements, a complete range of optional equipment and accessories is available. Some are shown here (in addition to the cab options on Page 7). There are many more to choose from. For the complete list of options, see your Fargo truck dealer.



TRANSISTOR RADIO



4-SPEED SYNCHRO-SHIFT TRANSMISSION



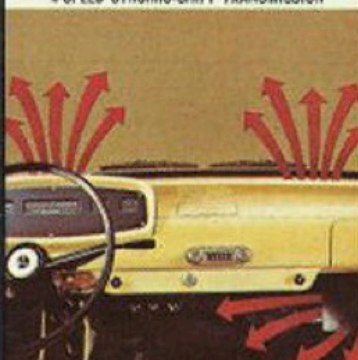
LOADFLITE AUTOMATIC TRANSMISSION (3-speed)



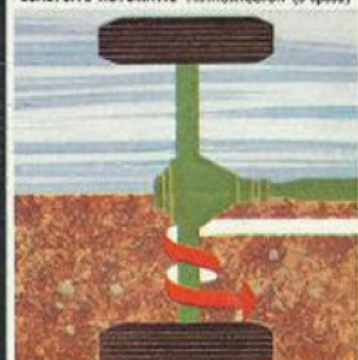
POWER STEERING



POWER BRAKES



HEATER & DEFROSTER—RECIRC. OR FRESH AIR



"SURE-GRIP" DIFFERENTIAL



INSIDE REAR VIEW MIRROR



OUTSIDE MIRROR—RIGHT SIDE—5" HEAD



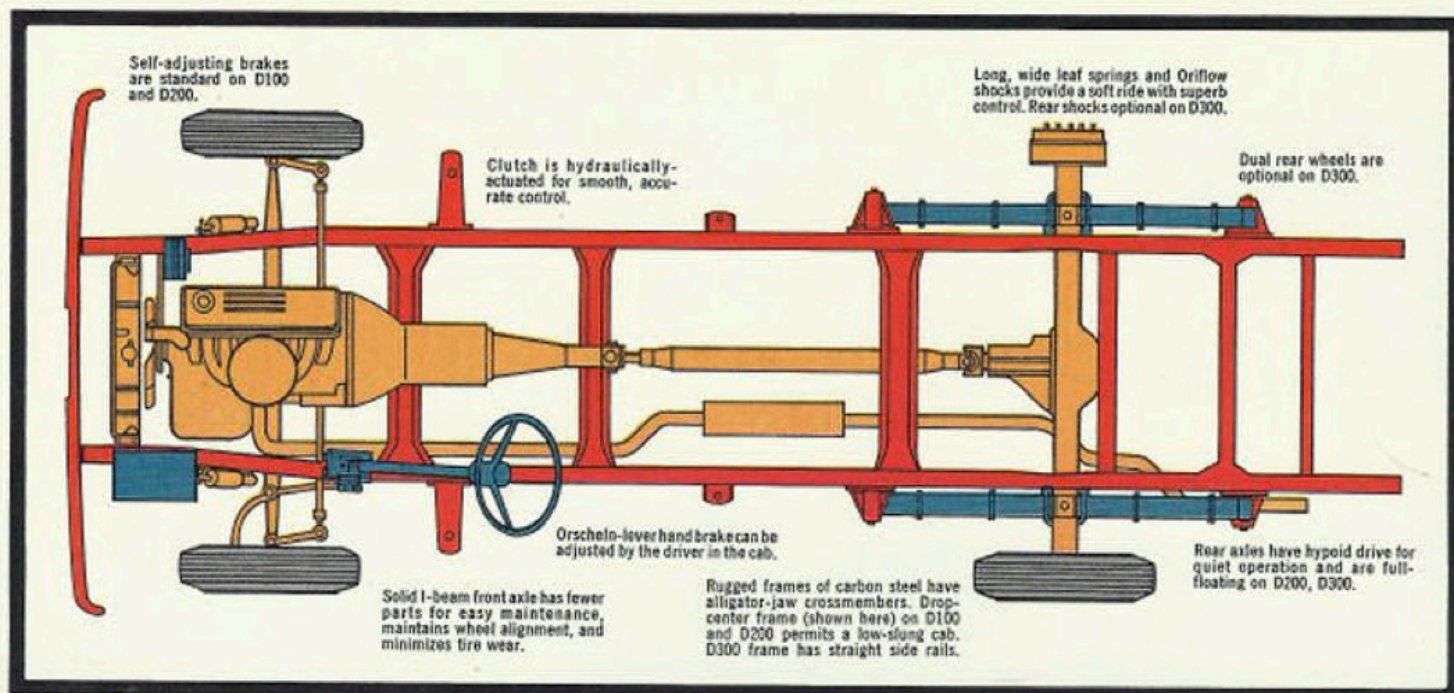
CHROME FRONT BUMPER



WHEEL COVERS (15" wheels)

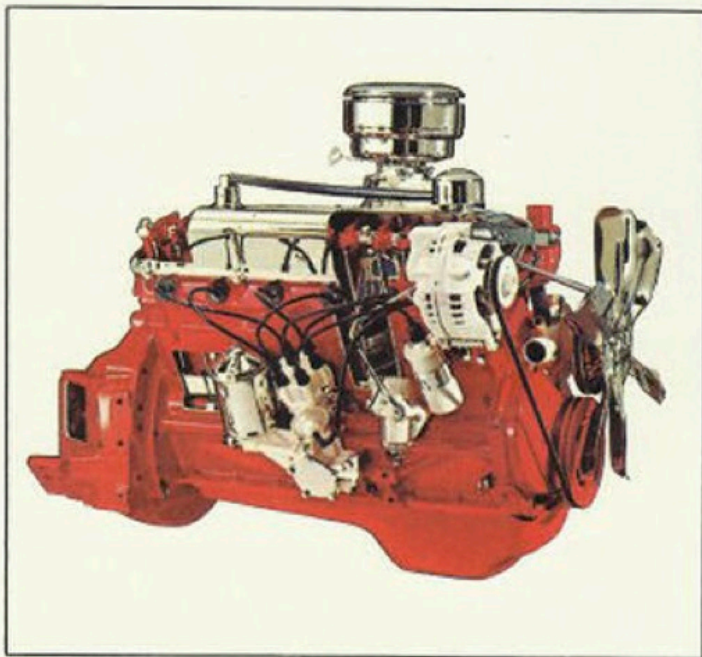


FULL-WIDTH REAR WINDOW

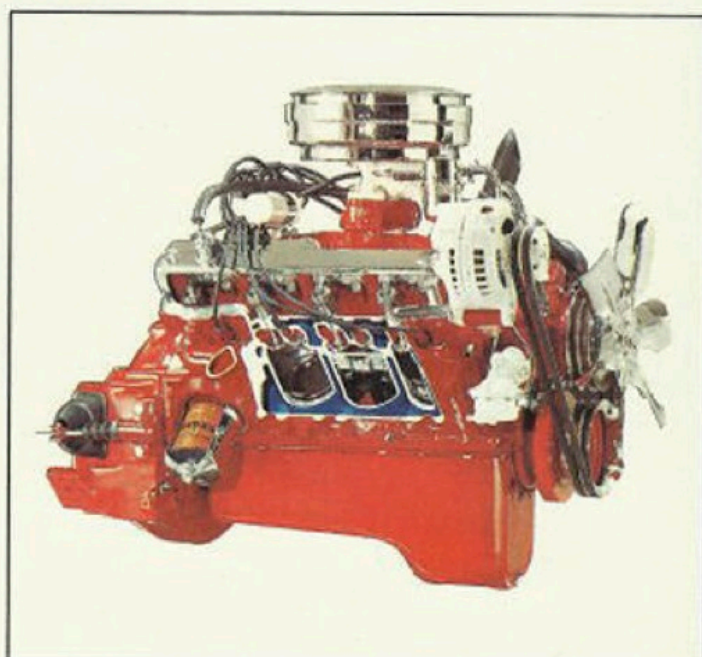


FARGO LIGHT-DUTY ENGINE AND CHASSIS FEATURES

Other manufacturer's truck engines may give you as much power as Fargo, but few give you as much toughness. The crankshaft, for example, is the same type used on the big trucks—a drop-forged crankshaft that's much stronger than the cast crankshaft used in other engines. Fargo power plants reach their maximum torque or pulling power at low rpms for less wear and tear. And Fargo engines are easy on fuel and maintenance costs, making them the smartest buys for the hard work you expect from a truck.



STANDARD 140 HP SLANT SIX 225. Highly efficient. Easy to service. Inclined at 30-degree angle for low center of gravity and individually ported, long-branch manifolds for superb engine "breathing." Features drop-forged crankshaft, weight-saving aluminum parts, deep-skirt block, rugged valve train, large radiator, and replaceable oil filter element.



OPTIONAL 200 HP 318 V8. Husky Fargo V8 with all the pep and pulling power you'd want. Its premium features include a drop-forged crankshaft, free-turning exhaust valves, drop-forged I-Beam connecting rods, rotary-type oil pump, and silent-chain camshaft drive. The 318 has proven to be one of the best truck V-8's in its class.

OTHER FARGO LIGHT DUTY TRUCKS

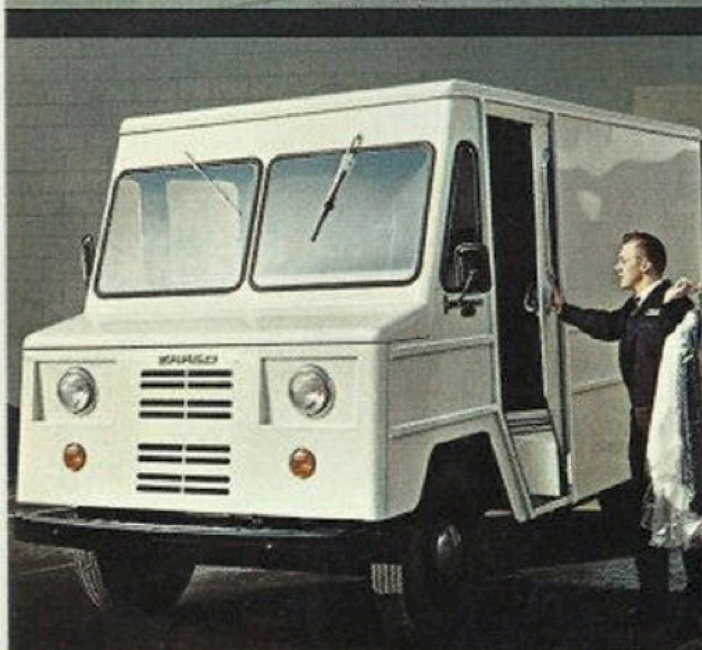
If one of the trucks in this catalogue doesn't fit your job exactly, don't stop. Fargo hasn't. You have a choice of many more light duty trucks from the compact Transiline series to rugged 4-wheel drive models. There's also the economical P100 Utilivan that comes complete with its own body.

No question about it. There's a Fargo truck that measures up to your job perfectly. Your Fargo dealer has literature on all the trucks illustrated below. Ask him for it.



COMPACT TRANSILINE SERIES

Don't let the word compact fool you. These trucks are built as rugged and tough as every Fargo truck. They have bigger brakes, bigger capacity, bigger value and more! Available in van, pickup and wagon models.



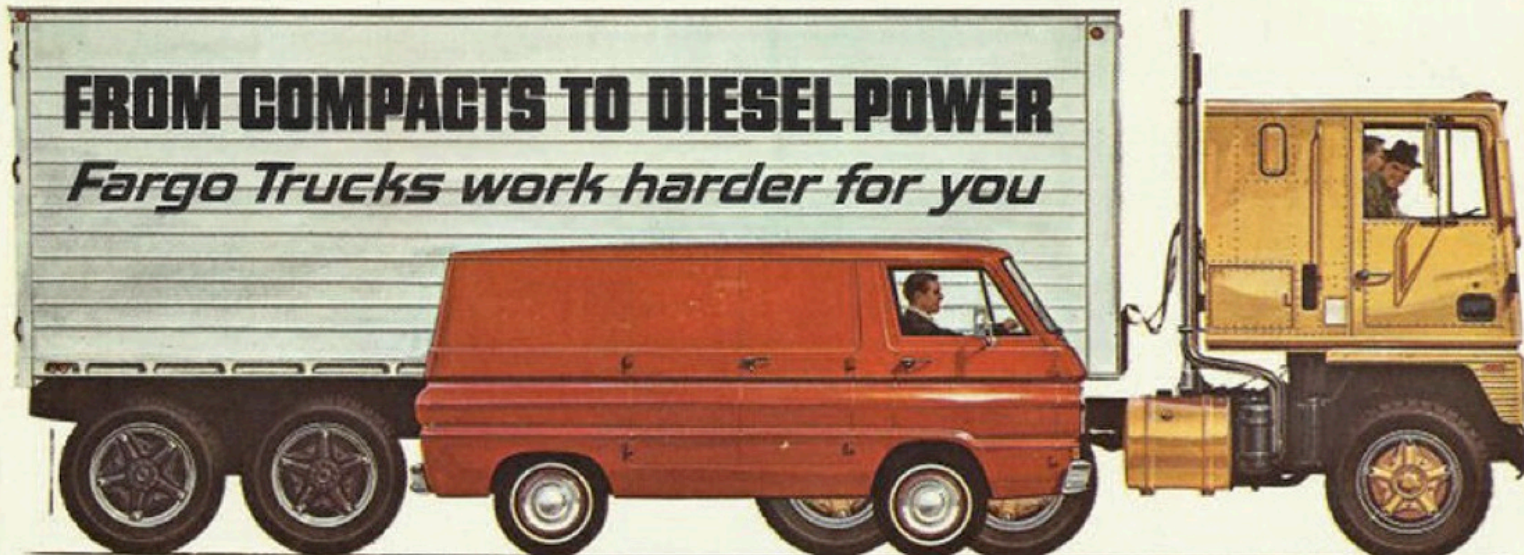
ECONOMICAL P100 UTILIVAN

Here's value with a capital "V". A thrifty, efficient delivery van that comes complete with body. The P100 is rugged, reliable and priced much lower than competitive models. The P100 is your low cost answer to light duty stop-and-go delivery work.



RUGGED 4-WHEEL DRIVE MODELS

These are the versatile, go-anywhere trucks. Some manufacturers merely convert existing trucks to 4-wheel drive. Not Fargo... they're engineered from the ground up. Fargo offers more 4-wheel drive models than any other manufacturer. And because they're factory built... they cost less.



These extended warranties say more about the quality and the toughness of Fargo trucks than thousands of words and claims ever could. While you read through the following list of warranted parts, think of your present trucks. Think of the major repair bills on defective power-train components that wouldn't have cost you a cent had your trucks been covered by these two extensive warranties. Here are the components they cover.

FARGO TRUCK 5-YEAR/ 50,000-MILE POWER-TRAIN WARRANTY

5 year or 50,000 mile Power-Train Warranty—The engine block, the cylinder head(s) and all internal parts. The pistons and piston rings. The connecting rods, crankshaft, main and connecting rod bearings, water pump and intake manifold. Transmissions, flywheels, flywheel housings and clutch housings. Manual and automatic transmissions (and transfer case and all internal parts). Transmission case and internal parts (but not the manual clutch). The torque converter on automatic transmissions. The drive shaft and universal joints, including centre bearings. The rear axle with its differential and wheel bearings. The front driving axle on 4 x 4 models. *This warranty is not pro-rated. It covers full parts and labour for the full term of the warranty.*

Extended Gasoline Engine Warranty—The extended gasoline engine warranty on every Low-Cab-Forward 800 and 900 model covers these components: The engine block and head(s). The pistons, piston rings and piston pins... The crankshaft and crankshaft bearings. The camshaft and camshaft bearings. The connecting rods and bearings. The oil pump and strainer. The intake and exhaust valves and valve train parts. The timing chain and sprockets, or timing gears. The intake and exhaust manifolds. The water pump. And the flywheel, flywheel housing and clutch housing.

FARGO TRUCK 5-YEAR/ 100,000-MILE HEAVY-DUTY GASOLINE ENGINE WARRANTY

Together, these are the longest and strongest warranties offered on any Canadian-built truck. This is black and white proof of quality. This is solid protection for your business and profits.

Interested in other Fargo trucks... Your Fargo dealer has complete literature and specifications on all light, medium and heavy models. Ask him for it.



**CHRYSLER
CANADA LTD.**

Constant improvement of its products requires Chrysler Canada Ltd. to reserve the right to change prices, specifications, and standard equipment without obligation from time to time, and without notice. Certain special equipment is shown on the vehicles illustrated in this catalogue, but your local dealer will gladly advise you of those items that are standard.