

2010 **CHEVY AVALANCHE**





Avalanche LTZ 2WD in NEW Sheer Silver Metallic with available dealer-installed Chevy Accessories. ¹ Based on GM Large Pickup segment. ² Cargo and load capacity limited by weight and distribution. ³ Maximum trailer weight ratings are calculated assuming a base vehicle, except for any option(s) necessary to achieve the rating, plus driver. The weight of other optional equipment, passengers and cargo will reduce the maximum trailer weight your vehicle can tow. See your Chevy dealer for additional details. ⁴ E85 is a combination of 85% ethanol and 15% gasoline. Go to chevy.com/biofuels to see if there is an E85 fuel station near you. EPA est. MPG when running on E85: 11 city, 16 hwy. ⁵ Dependability based on longevity: 1981-July 2008 full-size pickup registrations. Excludes other GM divisions. ⁶ Whichever comes first. See dealer for details.

LIFE CHANGES FAST. SO SHOULD YOUR VEHICLE.

It's an SUV. It's a pickup. In less than a minute – with the help of the **GM-EXCLUSIVE MIDGATE¹** – it's both. Avalanche can transform from a five- or six-



Active Fuel Management technology delivers power when you need it. It deactivates four of the eight engine cylinders with seamless precision to conserve fuel, and when conditions demand, all eight cylinders are reactivated to give you the power you need.

passenger SUV into a full-size pickup with an 8' 2" cargo box² – giving you the best of both worlds. Powering the family of Avalanche models is the **VORTEC 5.3L V8** engine with 320 horsepower and up to 8,100 lbs. of towing capacity.³ Active Fuel Management technology helps the Avalanche 2WD offer an EPA estimated **21 MPG HIGHWAY** and a **DRIVING RANGE OF UP TO 650 HIGHWAY MILES** when running on gas. The flexibility continues at the pump with the standard FlexFuel-capable engine, which can run on either unleaded fuel or E85.⁴ The 2010 Avalanche. From Chevy, the **MOST DEPENDABLE, LONGEST-LASTING FULL-SIZE PICKUPS⁵** on the road today.

THE BEST COVERAGE IN AMERICA

The 2010 Avalanche is backed by the 100,000 mile/ 5-year⁶ transferable Powertrain Limited Warranty. That's 40,000 more miles than Toyota or Honda offers. Add in our Roadside Assistance and Courtesy Transportation Programs, and you have the best coverage in America.

THE POWER LIST

The Flexible One.....	3
Best Coverage in America ...	3
Trunk Space	4
Midgate in Action	4
Capable and Powerful.....	6
Safety Surrounds You.....	9

AVALANCHE

See a photo gallery of Avalanche
at chevy.com/avalanche



LARGEST TRUNK IN THE INDUSTRY.

Life doesn't stand still. That's why you need the **MOST FLEXIBLE VEHICLE OUT THERE!** And with the removable three-piece cargo cover, lockable top-box storage, and the **LARGEST TRUNK IN THE INDUSTRY,**² Avalanche delivers. With the Midgate upright, Avalanche has the look and feel of an **UPSCALE SUV.** And when you lower the Midgate entirely, you have the capability of a **FULL-SIZE PICKUP** with an 8' 2" cargo box.³ The cargo box measures 50 inches at its widest point, allowing you to carry both large and small cargo, and it also has a light on the driver side – located inside the top-box storage – that helps you see what you want to retrieve.

- 01** With the 60/40 split-folding rear-bench seatback and Midgate upright, Avalanche can be configured as a five- or six-passenger⁴ SUV.
- 02** To begin converting Avalanche from an SUV to a pickup, simply lower the 60/40 split-folding bench seat. You can also stow the rear window inside the Midgate.
- 03** To utilize the full length of the cargo box, just lower the Midgate for a completely secured cargo area (when the three-piece cargo cover and rear window are in place).
- 04** To complete the transformation, remove the rear window and three-piece cargo cover and lower the tailgate to transport items such as a small ATV.



Avalanche LT 4WD interior in Light Cashmere/Dark Cashmere colors and exterior in Imperial Blue Metallic with available features. **1** Based on GM Large Pickup segment. Excludes other GM vehicles. **2** Based on vehicles with lockable trunks separate from the passenger compartment. Excludes other GM vehicles. **3** Cargo and load capacity limited by weight and distribution. **4** Depending on model.

AVALANCHE

For more information
about the many capabilities
of Avalanche, visit
chevy.com/avalanche

BUILT FOR PLAY. BUILT FOR WORK. BUILT FOR YOU.

Avalanche is the perfect blend of flexibility and functionality for people who aren't sure what life will throw at them. It provides **45.5 CU. FT. OF CARGO SPACE¹** for your gear and **UP TO 8,100 LBS.² OF TOWING CAPACITY** for your toys. And if you plan on loading up the cargo box, Avalanche doesn't sacrifice

ride quality, thanks to its **COIL SPRING SUSPENSION**. Under the hood, Avalanche offers proven **VORTEC** power – the standard 5.3L V8 engine with Active Fuel Management technology gives you control of 320 horses and 335 lb.-ft. of torque.



Take Avalanche off the pavement with the available Z71 Off-Road Suspension Package. It combines special shocks, a durable Skid Plate Package, and aggressive 18-inch wheels and tires. And a GM segment-exclusive³ automatic locking rear differential gives you that little extra grip on sand, mud and snow. Completing the package is a Z71-specific interior and front fascia.



Avalanche LS 4WD in Black with available features. ¹ Cargo and load capacity limited by weight and distribution. ² Maximum trailer weight ratings are calculated assuming a base vehicle, except for any option(s) necessary to achieve the rating, plus driver. The weight of other optional equipment, passengers and cargo will reduce the maximum trailer weight your vehicle can tow. See your Chevy dealer for additional details. ³ Based on GM Large Pickup segment.



Avalanche LT 4WD interior in Cashmere color with available features and leather-appointed seating surfaces. ¹ Government star ratings are part of the National Highway Traffic Safety Administration's (NHTSA's) New Car Assessment Program (www.safercar.gov). ² Air bag inflation can cause severe injury or death to anyone too close to the bag when it deploys. Be sure every occupant is properly restrained. ³ OnStar acts as a link to existing emergency service providers. Call 1-888-4ONSTAR (1-888-466-7827), see page 14 or visit onstar.com for details and system limitations.

FOUR-WHEEL BODYGUARD.

2010 Avalanche received a **FIVE-STAR FRONTAL CRASH TEST RATING¹** – the highest possible government rating. Avalanche offers an all-encompassing approach to safety, including head-curtain side-impact air bags,² **FRONT SEAT-MOUNTED SIDE-IMPACT AIR BAGS** and the StabiliTrak Electronic Stability Control System that's designed to help keep your vehicle on track. Avalanche comes with the safety and security of **ONSTAR** standard for the first year. LS has the Safe & Sound Plan, while LT and LTZ have the Directions & Connections Plan. Each plan features **AUTOMATIC CRASH RESPONSE³** with built-in vehicle sensors that can automatically alert an OnStar Advisor, who is immediately connected into your vehicle after a collision and can request emergency help be sent to your exact GPS location.



All Avalanche models feature a two-piston-front and single-piston-rear brake design to reduce noise and an active brake booster system for enhanced pedal feel.



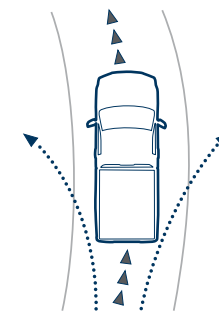
The Tire Pressure Monitoring System monitors the tire inflation level in each road tire (excludes spare tire). If any tire falls below a specified pressure, the driver is alerted via a message on the Driver Information Center.



An available rearview camera system helps you see certain stationary obstacles on the navigation screen (shown) or in the rearview mirror while moving in Reverse at low speeds. Standard on LTZ.

AVALANCHE

See more about safety features at chevy.com/avalanche



The StabiliTrak Electronic Stability Control System helps you stay the course by detecting the difference between the steering wheel angle and the direction the vehicle is actually turning. It then uses the brakes and, if necessary, adjusts engine torque to help you keep your vehicle on track.

FABRICS. COLORS. WHEELS.



Cashmere Color Premium Cloth



Ebony Premium Cloth



Cashmere Color Leather Appointments



Ebony Leather Appointments



Titanium Color Leather Appointments



Cashmere Color Perforated Leather Appointments



Ebony Perforated Leather Appointments



Titanium Color Perforated Leather Appointments



NEW Laser Blue Metallic (extra-cost color; available spring 2010)



Imperial Blue Metallic (not available on Z71)



Blue Granite Metallic (not available on Z71)



Black



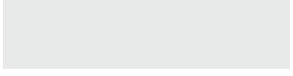
NEW Sheer Silver Metallic



NEW Black Granite Metallic (extra-cost color; not available on Z71; available through January 2010)



White Diamond Tricoat (extra-cost color, LTZ only)



Summit White



NEW Taupe Gray Metallic



Victory Red (not available on Z71)

01 18" aluminum wheel. Standard with Z71 Off-Road Suspension Package.

02 20" polished-aluminum wheel! Standard on LTZ and available on LS and LT.

03 20" chrome-clad wheel! Available on LTZ.

04 17" aluminum wheel with rectangular pockets. Standard on LS and LT; not available with Z71 Off-Road Suspension Package.



¹ Use only GM-approved tire and wheel combinations. Unapproved combinations may change the vehicle's performance characteristics. For approved tire and wheel combinations and other important information, go to gmaccessorieszone.com or see your dealer for details.

YOUR AVALANCHE. YOUR WAY. AVAILABLE DEALER-INSTALLED ACCESSORIES



Tubular assist steps.



Head-restraint DVD system.



22" chrome wheels!¹



Avalanche LTZ 4WD in Victory Red with available dealer-installed Chevy Accessories, including chrome brush grille guard, chrome door handles, chrome fuel door, chrome tubular assist steps, Cross Rail Package and 20" chrome wheels.



ACCESSORIES

Every Chevy Accessory is covered by the GM 3-year/36,000-mile (whichever comes first) New Vehicle Limited Warranty when ordered with your vehicle. See your dealer or visit chevy.com/avalanche for details and a closer look at more available accessories.

AVALANCHE FEATURES.

S = Standard O = Optional – = Not Available

MAXIMUM CAPACITIES		2WD	4WD
Payload¹ (lbs.)		1326	1263
Fuel tank (gal. approx.)		31	31
Trailer weight rating² (lbs.)		8100	7800
GVWR³ (lbs.)		7000	7200
EXTERIOR	LS	LT	L TZ
Cargo cover: three-piece rigid composite, stowable on board	S	S	S
Fog lamps	O⁴	S	S
Midgate: foldable door between cargo box and cab	S	S	S
Ultrasonic Rear Parking Assist	O⁵	S	S
ENGINE/CHASSIS			
Differential: automatic locking rear	O	S	S
Engine: Vortec 5.3L V8 with Active Fuel Management and E85 FlexFuel⁶ capability	S	S	S
Suspension, front: coil-over-shock with stabilizer bar	S	S	S
Suspension, rear: multilink with coil springs	S	S	S
Suspension Package, Autoride: bi-state variable shock dampening and rear, air-assisted load leveling	–	–	S
Suspension Package, Z71 Off-Road: specially tuned springs and monotube shocks, high-capacity air cleaner, Skid Plate Package with aluminum front underbody shield, automatic locking rear differential, 18" aluminum wheels paired with on-/off-road blackwall tires, recovery hooks, tubular assist steps, unique front fascia with chrome grille insert, Z71 badging, Z71-specific gauge cluster and two-speed transfer case	–	O	–
Trailering equipment: trailer hitch platform, seven-wire harness mated to a seven-way sealed connector and 2" trailering receiver	S	S	S
Transmission: Hydra-Matic six-speed automatic, with overdrive and Tow/Haul mode	S	S	S
Two-speed transfer case (4WD only)	O	O	O
SAFETY & SECURITY			
Air bags:⁷ driver and right-front passenger, dual-stage, frontal; Passenger Sensing System; head-curtain side-impact with rollover sensor, all outboard seating positions; and front seat-mounted side-impact	S	S	S
Brakes: four-wheel antilock disc	S	S	S
OnStar:⁸ with the Safe & Sound Plan (standard for the first year)	S	–	–
OnStar:⁸ with the Directions & Connections Plan (standard for the first year); includes Turn-by-Turn Navigation⁹	O	S	S
StabiliTrak Electronic Stability Control System with Proactive Roll Avoidance	S	S	S

INTERIOR	LS	LT	L TZ
Bluetooth® wireless technology¹⁰ for select phones	O	S	S
Convenience Package: power-adjustable pedals, remote vehicle starter system, Ultrasonic Rear Parking Assist, rearview camera system, rear camera display in mirror and body-color rear fascia	O	–	–
Interior Plus Package: tri-zone automatic climate controls, floor console, front bucket seats, rear-seat audio controls, Universal Home Remote transmitter, Bluetooth® wireless technology¹⁰ for select phones and LT Appearance Package (Gaston Walnut Woodgrain appearance and body-color outside rearview mirror caps and door handles)	O	–	–
Luxury Package: heated, leather-appointed front bucket seats; Universal Home Remote transmitter; outside, heated, power-adjustable, power-folding mirrors; and inside auto-dimming rearview mirror	–	O	–
Pedals: power-adjustable	O⁵	S	S
Remote Vehicle Starter System Prep Package	S¹¹	–	–
Remote vehicle starter system	O⁵	S	S
Steering wheel-mounted audio and cruise controls	S	S	S
Universal Home Remote transmitter: includes programmable garage door opener	O¹²	O¹³	S
SEATING			
Premium Cloth 40/20/40 split-bench front seat with driver six-way power	S	–	–
Premium Cloth front bucket seats with six-way power seat adjusters, adjustable head restraints, driver manual lumbar control, floor console and rear storage pockets	O¹²	S	–
Custom Leather-appointed front bucket seats with 10-way power seat adjusters, power lumbar control, heated seat cushions and seatbacks, two-position driver memory, adjustable head restraints, storage pockets and floor console	–	O¹³	–
Perforated, leather-appointed, heated and cooled front bucket seats with 12-way power, power lumbar control, two-position driver memory, adjustable head restraints, storage pockets and floor console	–	–	S
Premium Cloth Rear 60/40 split-folding bench	S	–	–
Custom Leather-appointed 60/40 rear split-folding bench	–	S	S

AUDIO SYSTEMS	LS	LT	L TZ
USB port¹⁴	S	S	S
XM Radio:¹⁵ with three trial months	S	S	S
XM NavTraffic¹⁶	O¹⁷	O¹⁷	S
AM/FM stereo, MP3-compatible with CD player	S	S	–
Audio system with navigation:¹⁸ AM/FM stereo, MP3-compatible with CD player	O¹⁹	O²⁰	S
Bose® seven-speaker sound system (including subwoofer)	O	S	–
Bose eight-speaker Centerpoint® Surround Sound system	–	–	S
Entertainment system: rear-seat DVD player with remote control	O¹²	O	O
WHEELS			
17" aluminum with rectangular pockets	S	S²¹	–
18" aluminum	–	O²²	–
20" polished-aluminum²³	O	O	S
20" chrome-clad aluminum²³	–	–	O
DEALER-INSTALLED CHEVY ACCESSORIES²⁴			
20" and 22" Chrome Wheels²³	O	O	O
Chrome Fuel-Filler Door, Handles and Mirror Caps	O	O	O
Chrome Grille	O	O	O
Dual Head-Restraint DVD System	O	O	O
Portable Overhead DVD Player²⁵	O	O	O
Oval Assist Steps	O	O	O

1 Maximum payload capacity is for a properly equipped vehicle and includes weight of driver, passengers, optional equipment and cargo. Cargo and load capacity limited by weight and distribution. 2 Maximum trailer weight ratings are calculated assuming a base vehicle, except for any option(s) necessary to achieve the rating, plus driver. The weight of other optional equipment, passengers and cargo will reduce the maximum trailer weight your vehicle can tow. See your Chevy dealer for additional details. 3 Gross Vehicle Weight Rating. When properly equipped; includes weight of vehicle, driver, passengers, cargo and optional equipment. 4 Requires available Exterior Plus Package. 5 Requires available Convenience Package. 6 E85 is a combination of 85% ethanol and 15% gasoline. Go to chevy.com/biofuels to see if there is an E85 fuel station near you. 7 Always use safety belts and the correct restraint for your child's age and size. Even in vehicles equipped with the Passenger Sensing System, children are safer when properly secured in a rear-seat in the appropriate infant, child or booster seat. Never place a rear-facing infant restraint in the front seat of any vehicle equipped with a passenger air bag. See the Owner's Manual and child safety seat instructions for more safety information. 8 Call 1-888-4ONSTAR (1-888-466-7827), see page 14 or visit onstar.com and for details and system limitations. 9 Not available in certain areas. Visit onstar.com for coverage map. 10 Go to gm.com/bluetooth to find out which phones are compatible with the vehicle. 11 Remote vehicle starter system key fob available as a Chevy Accessory. 12 Requires available Interior Plus Package. 13 Requires available Luxury Package. 14 Not compatible with all devices. 15 XM Radio requires a subscription, sold separately by XM after trial period. XM Radio U.S. service only available in the 48 contiguous United States and the District of Columbia. For more information, visit gm.xmradio.com. 16 Service not available in Canada, Alaska and Hawaii. XM Radio subscription required and sold separately after trial period. Fees, taxes, and a one-time reactivation fee may apply. Subscriptions governed by XM Customer Agreement available at xmradio.com/serviceterms. All fees and programming subject to change. Family programming packages are available. 17 Requires available navigation radio. 18 Map coverage excludes Puerto Rico, the Virgin Islands and portions of Canada. 19 Requires available Interior Plus Package, Convenience Package and Bose seven-speaker system. 20 Requires available rearview camera system and inside auto-dimming rearview mirror. 21 Not available with Z71 Off-Road Suspension Package. 22 Requires available Z71 Off-Road Suspension Package. 23 Use only GM-approved tire and wheel combinations. Unapproved combinations may change the vehicle's performance characteristics. For important tire and wheel information, go to gmaccessorieszone.com or see your dealer for details. 24 Some accessories may not be available on all models. 25 Must be used with portable DVD docking station (sold separately) when operated in vehicle. Requires available Convenience Package, rear-seat DVD entertainment system, inside auto-dimming rearview mirror and rearview camera system. 26 Requires available Bose seven-speaker system and rear-seat DVD entertainment system. Not available with Sun, Entertainment and Destinations Package. 27 Requires available Convenience Package; Sun, Entertainment and Destinations Package; or navigation radio. 28 Requires available inside rearview mirror with camera display or navigation radio.


SELECT AVAILABLE FEATURES.

- LS
- AM/FM stereo with CD/MP3/DVD player¹²,²⁶
 - Heavy-duty trailering equipment; includes: external transmission engine oil cooler and two-speed transfer case
 - Rear-seat DVD entertainment system with remote¹²
 - Rearview camera system²⁷
 - Power tilt/sliding sunroof¹²

- LT
- AM/FM stereo with CD/MP3/DVD player²⁶
 - Heavy-duty trailering equipment; includes: external transmission engine oil cooler and two-speed transfer case
 - Rearview camera system²⁸
 - Power tilt/sliding sunroof

- L TZ
- Rear-seat DVD entertainment system with remote
 - Power-retractable assist steps¹⁷
 - Power tilt/sliding sunroof

CHEVY

For more information about ownership extras, please visit the websites below. 



onstar.com



ACCESSORIES

chevy.com/accessories



gm.xmradio.com



chevy.com/warranty

THE BEST COVERAGE IN AMERICA.

100,000 MILE/5-YEAR TRANSFERABLE POWERTRAIN LIMITED WARRANTY. Every 2010 Chevy passenger car, light-duty pickup, SUV and crossover comes with a 100,000 mile/5-year (whichever comes first) transferable Powertrain Limited Warranty. Plus, you get 100,000 miles/5 years (whichever comes first) of the 24/7 Roadside Assistance Program and the Courtesy Transportation Program and much more. See dealer for details.

NEW VEHICLE LIMITED WARRANTY. GM vehicles registered in the U.S.A. are covered for 3 years/36,000 miles (whichever comes first). The complete vehicle is covered, including tires, towing to your nearest Chevrolet dealership and cosmetic corrosion resulting from defects. Repairs will be made to correct any vehicle defect, and most warranty repairs will be made at no charge. In addition, rust-through corrosion will be covered for 6 years/100,000 miles (whichever comes first). See dealer for details.

ENGINES. Chevrolet products are equipped with engines produced by GM Powertrain or other suppliers to GM worldwide. The engines in Chevrolet products may also be used in other GM makes and models.

ASSEMBLY. Chevrolet vehicles and their components are assembled or produced by different operating units of General Motors, its subsidiaries or suppliers to GM worldwide. We sometimes find it necessary to produce Chevrolet vehicles with different or differently sourced components than originally scheduled. Since some options may be unavailable when your vehicle is assembled, we suggest you verify that your vehicle includes the equipment you ordered and that, if there were changes, they are acceptable to you.

ONSTAR. OnStar services require vehicle electrical system (including battery), wireless service and GPS satellite signals to be available and operating for features to function properly. OnStar acts as a link to existing emergency service providers. Subscription Service Agreement required. Call 1-888-4ONSTAR (1-888-466-7827) or visit onstar.com for OnStar Terms and Conditions, Privacy Statement, and details and system limitations.

A NOTE ABOUT CHILD SAFETY. Always use safety belts and the correct restraint for your child's age and size. Even in vehicles equipped with the Passenger Sensing System, children are safer when properly secured in a rear seat in the appropriate infant, child or booster seat. Never place a rear-facing infant restraint in the front seat of any vehicle equipped with a passenger air bag. See the Owner's Manual and child safety seat instructions for more safety information.

IMPORTANT WORDS ABOUT THIS CATALOG. We have tried to make this catalog comprehensive and factual. We reserve the right, however, to make changes at any time, without notice, in prices, colors, materials, equipment, specifications, models and availability. Specifications, dimensions, measurements, ratings and other numbers in this catalog and other printed materials provided at the dealership or affixed to vehicles are approximates based upon design and engineering drawings, prototypes and laboratory tests. Your vehicle may differ due to variations in manufacture and equipment. Since some information may have been updated since the time of printing, please check with your Chevrolet dealer for complete details. Chevrolet reserves the right to lengthen or shorten the model year for any product for any reason or to start and end model years at different times. Certain vehicle features may lose their usefulness over time due to obsolescence from technological changes. Unless otherwise noted, all claims based on GM Large Pickup segment and latest available competitive information. Excludes other GM vehicles.

TRAILERING AND OFF-ROAD DRIVING INFORMATION. Please go to chevy.com and carefully review an Owner's Manual for important safety information about trailering or off-road driving in your vehicle.

At Chevrolet, giving you a completely satisfying ownership experience is our top priority. That's why if you ever need assistance, feel free to contact us at these websites or phone numbers.

CHEVY.COM. Offers shopping tools such as Build and Price, Find a Vehicle, Request Info, Email Sign-Up, Compare Vehicles, Financial Tools...and much more.

24-HOUR ROADSIDE ASSISTANCE PROGRAM (1-800-CHEV-USA). The Chevrolet Roadside Assistance Program provides you with the following services for 100,000 miles or 5 years (whichever comes first): Emergency Towing (to closest Chevy dealer from a legal roadway), Lockout Service (keys locked inside vehicle), Flat Tire Changes (spare installed), Fuel Delivery (\$5 worth of fuel delivered on the road) and Jump Starts (at home or on the road). For specific terms and conditions, please contact your Chevrolet Roadside Assistance advisor at 1-800-243-8872. Some services may incur costs.

COURTESY TRANSPORTATION PROGRAM. Ask your Chevrolet dealer for Courtesy Transportation if you leave your vehicle for extended repairs under the New Vehicle Limited Warranty or Powertrain Limited Warranty. Ask if you qualify for expense reimbursement and/or vehicle rental. Services vary by dealer.

CHEVROLET CUSTOMER ASSISTANCE CENTER (1-800-222-1020). Talk directly to customer relationship managers who can handle any inquiries related to vehicle operation, warranty coverages, or product or service concerns you may have. Please refer to your Owner's Manual for Customer Assistance information.

CHEVY.COM/SAFETY. Chevrolet is committed to keeping you and your family safe — from the start of your journey to your destination. That's why every Chevrolet is designed with a comprehensive list of safety and security features to help give you peace of mind.

GMMOBILITY.COM (1-800-323-9935). GM Mobility offers financial assistance for eligible adaptive equipment to make automotive travel easier for persons with disabilities or special transportation needs. To learn more about special GM Mobility offers, visit gmmobility.com.

CHEVROLET OWNER CENTER (GMOWNERCENTER.COM/CHEVY). Register your vehicle with the Chevrolet Owner Center, and receive benefits such as online access to your vehicle Owner's Manual, maintenance schedule reminders, service history tracking, warranty and service information, safety information, special offers and privileges, and news and events.

MARKETING AND INCENTIVES (CHEVY.COM/SPECIALOFFERS). Call 1-800-950-CHEV (1-800-950-2438) or visit chevy.com/specialoffers for new product, current incentive and marketing program information.

GM CARD MEMBERS SERVICES.COM. Did you know about the family of reward credit cards that can help you get a great deal on a new GM car, light-duty pickup, SUV or crossover? With a GM reward card, you accrue earnings on every credit card purchase to use toward the purchase or lease of an eligible, new GM vehicle. With three cards to choose from, you're sure to find one that suits you best.

GM, the GM Logo, Chevrolet, the Chevrolet Logo, and the slogans, emblems, vehicle model names, vehicle body designs and other marks appearing in this catalog are the trademarks and/or service marks of General Motors, its subsidiaries, affiliates or licensors. OnStar, the OnStar Emblem, Directions & Connections and Safe & Sound are registered trademarks of OnStar LLC. SIRIUS, XM and all related marks and logos are trademarks of SIRIUS XM Radio Inc. and its subsidiaries. Bose and Centerpoint are registered trademarks of the Bose Corp. The Bluetooth word mark is a registered trademark owned by Bluetooth SIG, Inc. and any use of such mark by Chevrolet is under license. ©2009 General Motors. All rights reserved.

Litho in USA.

October 2009

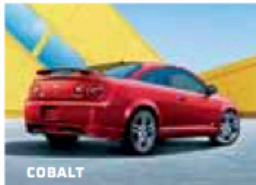


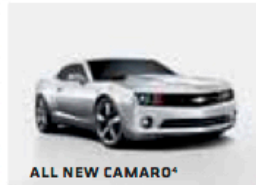
Avalanche LTZ 4WD in White Diamond Tricoat (extra-cost color) with available dealer-installed Chevy Accessories.


CHEVY

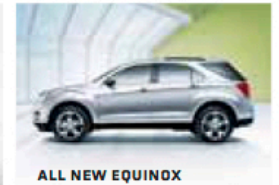
To us, it's pretty simple: Build vehicles that anyone would be proud to own, and put them within reach. We offer more models than Toyota or Honda with **30 MPG HIGHWAY OR BETTER¹**. We're backing our quality with the **BEST COVERAGE IN AMERICA**, which includes the 100,000 mile/5-year² transferable Powertrain Limited Warranty plus Roadside Assistance and Courtesy

Transportation Programs. We're filling our cars and trucks with the kind of thinking, features and craftsmanship you'd expect to pay a lot more for. This philosophy has earned us more **CONSUMERS DIGEST "BEST BUY"** awards for 2009 models³ than any other brand. So owning a Chevy isn't just a source of transportation. It's a source of pride. **CHEVY.COM**


AVEO5

COBALT

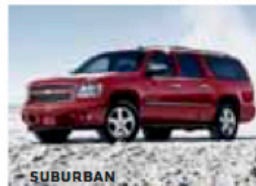
MALIBU

ALL NEW CAMARO⁴

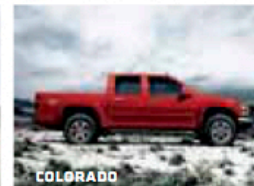
IMPALA

CORVETTE

ALL NEW EQUINOX

HHR

TRAVERSE

TAHOE

SUBURBAN

AVALANCHE

COLORADO

SILVERADO

¹ Based on EPA estimates for 2010 Aveo Sedan, Aveo5, Cobalt, Cobalt XFE, Equinox FWD, HHR, HHR Panel and Malibu. ² Whichever comes first. See dealer for details. ³ Models include Malibu, Traverse, Silverado 1500 and others. Visit www.consumersdigest.com/award_page to see the full list of award-winning Chevy vehicles. ⁴ Limited availability.



Recycled

 APPROVED LOGO WILL BE PLACED BY
PRINTER WITH APPROVAL FROM FSC.
