



MATIZ



CHEVROLET









Cities are all about big. Big buildings. Big dreams. Big business by day and big events by night. But when it comes to getting around the city and suburbs, the advantage goes to the small. As in a stylish car that's more nimble in traffic. More practical to park. More economical to run. All with ample room for four adults, and enough boot space for almost any type of cargo. For everyone who wants flexibility with more fun, we present the Chevrolet Matiz. The small car that's big where it matters most.



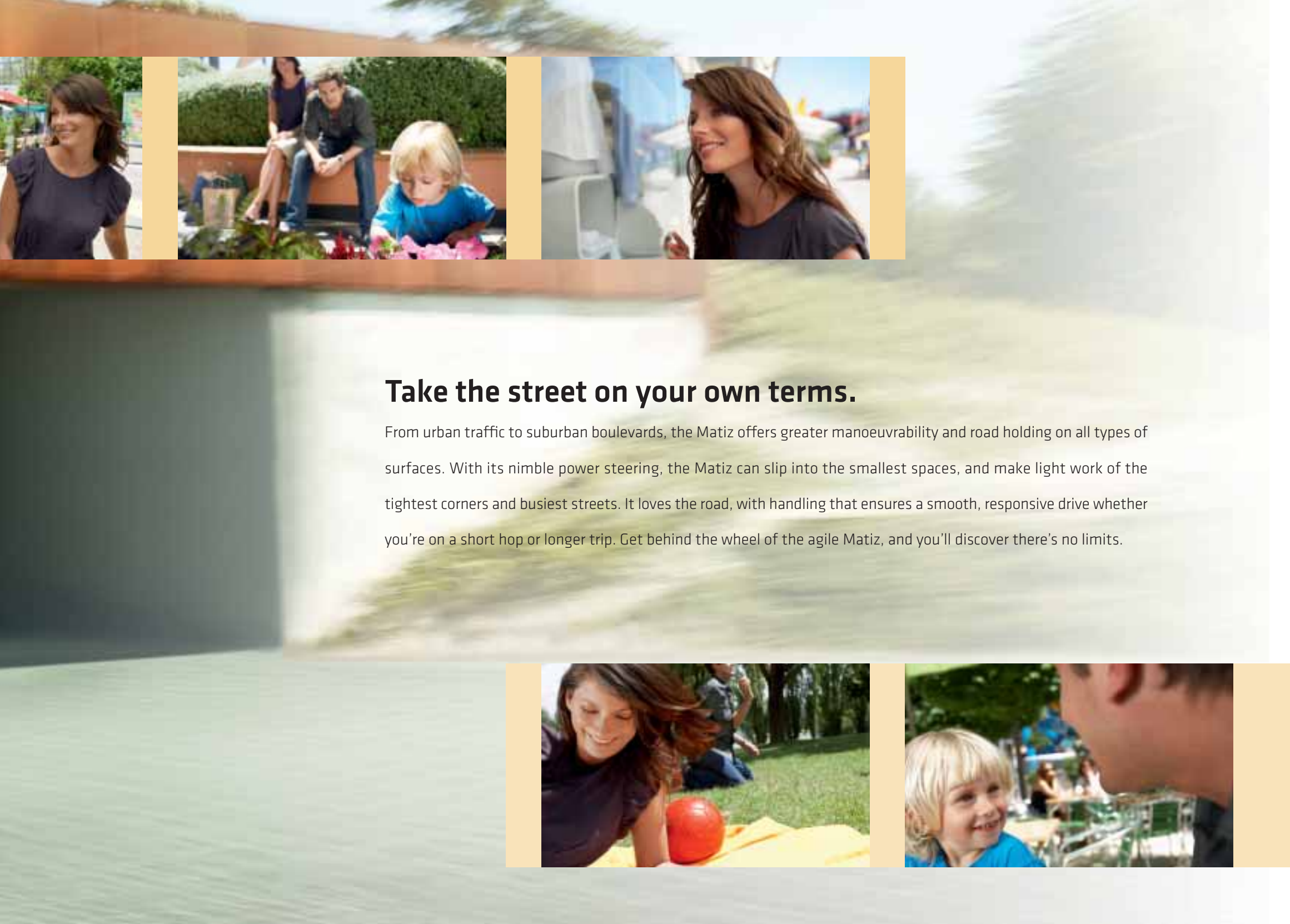
Style that's in fashion everywhere.

The Matiz exudes so much charm, it turns heads wherever you go. A short body overhang, angled shoulder line and slick bonnet create a unique, energetic profile. The two tone bumper and a dynamic rear spoiler on SE models, cute headlamps and round tail lights give it an endearing face and personality to spare. Fun and cosmopolitan, the Matiz is designed to make every drive a little more beautiful.









Take the street on your own terms.

From urban traffic to suburban boulevards, the Matiz offers greater manoeuvrability and road holding on all types of surfaces. With its nimble power steering, the Matiz can slip into the smallest spaces, and make light work of the tightest corners and busiest streets. It loves the road, with handling that ensures a smooth, responsive drive whether you're on a short hop or longer trip. Get behind the wheel of the agile Matiz, and you'll discover there's no limits.











Comfort that's nothing short of ingenious.

The Matiz makes the most of all available space. Compact on the outside, the generous interior has room for four adults and a high roof line – so passengers in the back have plenty of headroom. They can also get in and out easily thanks to the Matiz's raised rear seats. For greater versatility, fold the rear seats down to create 845 litres of space. Even long objects are simple to carry with 60/40 split rear seats as standard. A streamlined cockpit puts control and comfort in easy reach, ensuring that you never have to stretch to adjust the radio or cabin temperature.







An oasis in the heart of the city.

Even when daily life is at its busiest, the Matiz offers a personal space to relax. Its sunny cabin features plenty of warm interior accents, like instrument dials that match the colour of the seats and bodywork. To panache add practicality: ingenious storage ideas include holders for your cards and coins, hooks to keep shopping bags upright, underseat trays for maps or CDs and on SE models a handy sunglasses holder. Optional air conditioning keeps you comfortable in every season, while the standard Blaupunkt audio system with MP3 playback entertains in fantastic style.







More power with less fuel stops.

Smooth acceleration and exceptional fuel economy make the Matiz ideal for motorway as well as urban driving. Enjoy a lively 5-speed manual as standard, or select an optional automatic transmission for a relaxed drive in city traffic. Our 38kW/51 PS 0.8 litre engine combines responsive performance, with up to 54.3 mpg overall, while the 48kW/65 PS 1.0 litre returns up to 50.4 mpg overall. All of our engines meet Euro IV emission standards, with our 0.8 litre engine featuring CO₂ emissions below 120 grams per kilometre.





Feel safer everywhere you travel.

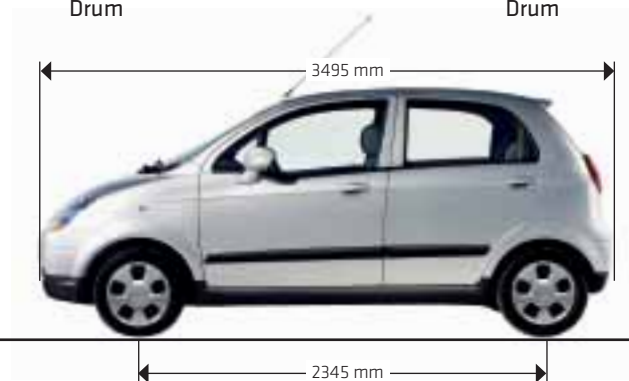
The Matiz is a small car that offers safety without compromise. A new body structure has been strengthened by a reinforced A-pillar for extra protection on the outside. ABS is fitted as standard, ensuring a safe, reliable response in wet or dry road conditions. Inside, driver and passengers front airbags, three point safety belts, electric front seat belt pretensioners, protective rear headrests and two ISOFIX fittings in the rear seat optimise passenger safety. Even security is enhanced with an immobiliser that prevents anyone from starting the engine without a key. So no one but you can run around town in your Matiz.





Technical Specifications

Measurements and Weights	0.8 S	0.8 SE Auto	1.0 SE
Length (mm)	3495	3495	3495
Width excl. mirrors (mm)	1495	1495	1495
Height (mm)	1500	1500	1500
Wheelbase (mm)	2345	2345	2345
Track width front/rear (mm)	1310/1275	1310/1275	1310/1275
Min. turning radius (m)	4.6	4.6	4.6
Load space seats up/folded (l)	170/845	170/845	170/845
Head room front/rear (mm)	1004/959	1004/959	1004/959
Shoulder room front/rear (mm)	1250/1250	1250/1250	1250/1250
Leg room front/rear (mm)	1022/900	1022/900	1022/900
Fuel tank (l)	35	35	35
Kerb weight (kg)	775~835	795~855	795~855
Gross vehicle weight (kg)	1250	1270	1270
Wheel size	4.5J x 13	4.5J x 13	4.5J x 13
Tyre size	155/65 R 13	155/65 R 13	155/65 R 13
Chassis and Brakes			
Steering	Hydraulic power	Hydraulic power	Hydraulic power
Front-wheel drive	Standard	Standard	Standard
Four-channel ABS braking with EBD	Standard	Standard	Standard
Brakes front	Solid disc	Solid disc	Solid disc
Brakes rear	Drum	Drum	Drum

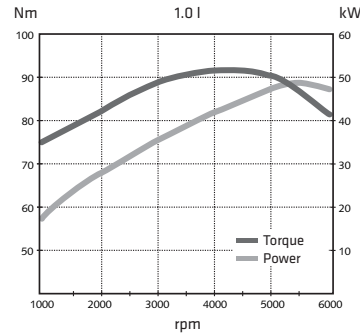
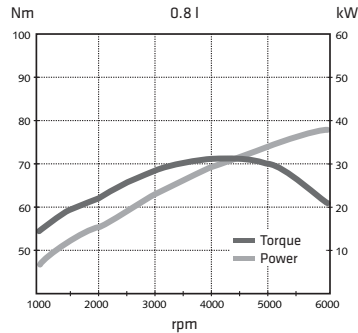




Engines and Transmissions	0.8 S	0.8 SE Auto	1.0 SE
Engine type	SOHC 6 valve	SOHC 6 valve	SOHC 8 valve
Displacement (cc)	796	796	995
Cylinders	3	3	4
Bore x Stroke (mm)	68.5 x 72	68.5 x 72	68.5 x 67.5
Fuel injection system	Multi-Point Injection	Multi-Point Injection	Multi-Point Injection
Compression ratio	9.3	9.3	9.3
Power output (kW/PS)	38/51 at 6000 rpm	38/51 at 6000 rpm	48/65 at 5400 rpm
Max. torque (Nm)	71.5 at 4400 rpm	71.5 at 4400 rpm	91 at 4200 rpm
Transmission	5-Speed Manual	4-Speed Automatic	5-Speed Manual
Final drive ratio	4.263	4.709	4.105
Emission class	Euro IV	Euro IV	Euro IV
Performance and Fuel Economy*			
Top speed (mph)	90	84	97
Acceleration 0-62 mph (s)	18.2	21.9	14.1
Urban (mpg (l/100km))	40.9 (6.9)	37.2 (7.6)	39.2 (7.2)
Extra-urban (mpg (l/100 km))	67.3 (4.2)	61.4 (4.6)	60.1 (4.7)
Combined (mpg (l/100 km))	54.3 (5.2)	49.6 (5.7)	50.4 (5.6)
CO ₂ emissions (g/km)	119	132	137



* Fuel consumption information is official government environmental data, tested in accordance with the relevant EU Directive.



Exterior Colours



Super Red 71U Solid



Ocean Blue 12U Metallic



Jazz Blue 23U Solid



Electric Yellow 56U Metallic



Poly Silver 92U Metallic
Available until Jan. 2009 production.
Ice Silver Metallic
Available from March 2009 production.



Dynamic Orange 98U Mica



Mighty Blue 99U Mica



Highway Yellow 52U Solid

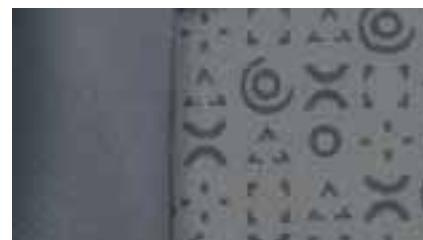


Apple Green 45U Mica



Pearl Black 87U Mica
Available until Sep. 2008 production.
Carbon Flash Black Metallic
Available from Nov. 2008 production.

Interior Trims



Action Grey
Only available on S models



Action Orange
Only available on SE models with Dynamic Orange or Pearl Black exterior colours

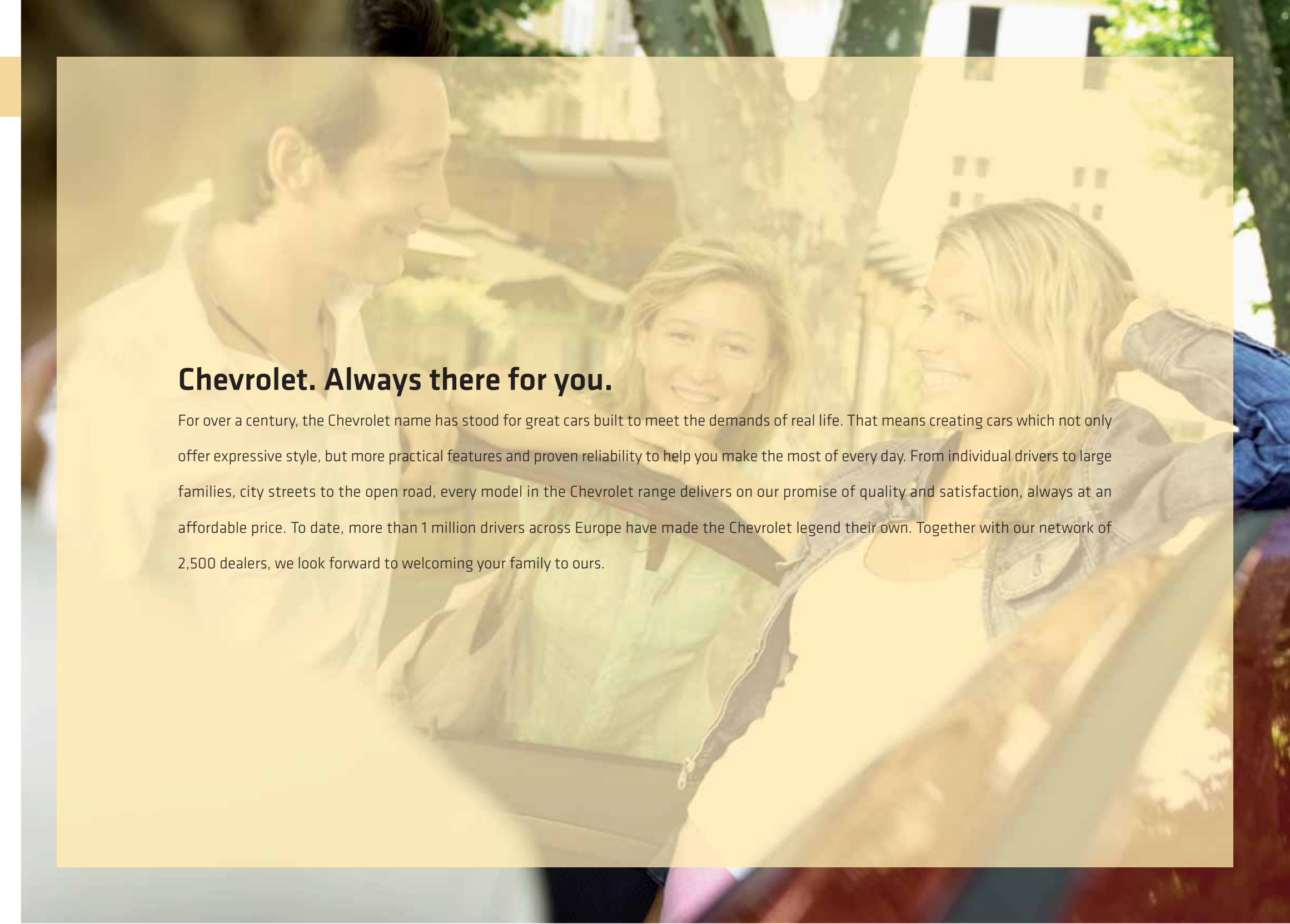


Action Yellow
Only available on SE models with Electric Yellow or Apple Green exterior colours



Action Blue - Only available on SE models with Super Red, Ocean Blue, Jazz Blue, Poly Silver, Mighty Blue or Highway Yellow exterior colours





Chevrolet. Always there for you.

For over a century, the Chevrolet name has stood for great cars built to meet the demands of real life. That means creating cars which not only offer expressive style, but more practical features and proven reliability to help you make the most of every day. From individual drivers to large families, city streets to the open road, every model in the Chevrolet range delivers on our promise of quality and satisfaction, always at an affordable price. To date, more than 1 million drivers across Europe have made the Chevrolet legend their own. Together with our network of 2,500 dealers, we look forward to welcoming your family to ours.

CHEVROLET OWNER PRIVILEGES.

Every Chevrolet comes with a comprehensive warranty and commitment from us to you:

- 3 years' or 60,000 miles comprehensive warranty FREE
- 6 year anti-perforation corrosion warranty with no mileage restrictions FREE

IMPORTANT NOTICE: Chevrolet UK Ltd is constantly seeking ways to improve the specification, design and production of its vehicles and alterations take place continually. Whilst every effort is made to produce up to date literature, this UK market brochure should not be regarded as an infallible guide to current specifications, nor does it constitute an offer for sale of any particular vehicle. Owing to the print limitations of re-producing paint colours on paper, the colours shown here can only be taken as a general guide to the range of colours available. Information on recycling design, recycling End of Life Vehicles (ELV) and the return locations of ELVs can be found on the website www.chevrolet.co.uk. © 2009 Chevrolet UK. All rights reserved. This material shall not be reprinted, in whole or in part, without the express written permission of Chevrolet UK Ltd

www.chevrolet.co.uk

Chevrolet UK Ltd, Luton, LU1 3YT, 0800 666 222



Matiz



Aveo



Lacetti



Lacetti SW



Epica



Captiva

GET REAL.



CHEVROLET