



SOLUTIONS FOR THE WORLD YOU DRIVE IN.

At General Motors we are 100 percent committed to building vehicles that answer your specific needs. Because you demand more of your vehicle than ever before, we're committed to putting more of what you want into every vehicle we make.

VALUE

Value means much more than simply the price you pay for a vehicle. We are particularly proud of the value you receive for your money when you choose a General Motors vehicle – the unique combination of style, performance, safety, quality and functionality that sets GM's diverse model lineup apart from the rest.

FUEL ECONOMY

We know how important fuel efficiency is today. GM has it covered by offering more cars that get better than 7.0 L/100 km or 40 mpg in highway* driving than any other automaker in Canada. In addition, GM offers 15 models with Active Fuel Management™ fuel-saving technology – and 17 models that can run on E85 ethanol fuel.

QUALITY

If you're looking for a vehicle that's built to exceptionally high standards, look no further than GM's long list of quality and dependability awards, media accolades and consumer recommendations – as well as the fact that GM builds the most dependable, longest-lasting full-size pickups on the road.*

INNOVATIVE DESIGNS

It required ingenuity to bring utility and dramatic style together in the Chevrolet HHR. And it required pure creativity to execute the flawless lines and purposeful design of the Pontiac Solstice open-air roadster. At GM, we break the mould to develop new designs that give you more range of selection than ever before.

SAFETY

General Motors is the only automotive manufacturer committed to offering a full range of cars, trucks and SUVs that provide safety protection before, during and after a collision. In addition, GM builds 26 vehicles that have earned U.S. Government five-star frontal or side crash test ratings for 2006 models.**

FEATURES

GM keeps you ahead of the curve, by adding the features that really make a difference to your driving experience. Features like OnStar – the first comprehensive in-vehicle communications and assistance service. And XM Satellite Radio – the largest satellite radio provider in the world – that's now offered on more than 50 GM vehicles.

*Dependability based on longevity; 1988–July 2005 full-size Chevrolet and GMC light-duty pickup registrations, including chassis cabs. Sources: R.L. Polk Canada, Inc. National Vehicle Population Profile – Canadian Vehicles in Operation as of July 1, 2005. Based on % of vehicles remaining in operation, weighted on age of vehicle.

**U.S. Government ratings are part of the National Highway Traffic Safety Administration's (NHTSA's) New Car Assessment Program (safercar.gov).

†Based on Natural Resources Canada's 2006 Fuel Consumption Guide's rating available at time of printing.

™© 2005, VANOC. Used under License.

CHEVROLET PONTIAC BUICK GMC SATURN HUMMER SAAB CADILLAC

gmcanada.com



CENTRA
AUTO

190-07-B-006E



2007 IMPALA



2007
IMPALA



CHEVROLET

2007 IMPALA

WHAT THE SEDAN WAS ALWAYS MEANT TO BE.

A sedan is more than an assembly of parts. Style must be complemented by function. Technology must be integrated. The engineering must bring all the elements together. To understand what it takes to build today's signature sedan, may we recommend a thorough exploration of the new generation Chevrolet Impala. It turns the heat up a few notches, with an engine lineup highlighted by the return to small-block V8 power. Convenience and versatility are also elevated. As will be your peace of mind – not just knowing that you have such a well-engineered and well-built sedan, but also because Impala has earned five-star safety ratings* and includes the reassurance that accompanies the standard OnStar system. The complete definition of today's sedan: the 2007 Chevrolet Impala.

For more information on the 2007 Impala, visit our website at impala.gmcanada.com

*2006 model tested. Driver and front passenger frontal crash ratings. U.S. government ratings are part of the National Highway Traffic Safety Administration's (NHTSA) New Car Assessment Program (safercar.gov).



CENTURY
AUTO-CA

Impala LT, shown in Silverstone Metallic.

IMPALA SS

THE V8 BLOCK IS SMALL. NOT THE POWER.

How do you top a 303 horsepower small-block V8 engine? With the Active Fuel Management™ that is incorporated into the 5.3L V8 engine on Impala SS. This technology enables the engine to shut down four of the eight cylinders when they aren't needed. In other words, you get the power of an eight, with fuel efficiency you probably never thought possible. The V8 that's built for city traffic as well as the open road. With the output to match.

CENTURY
AUTOLCA

Impala SS, shown in Silverstone Metallic.

IMPALA SS
CONTROLS



SEIZE THE MOMENT.

Performance driving is all about taking control. That requires a very high level of interactivity, not just an abundant supply of power. The Impala SS instrument panel provides complete command through its comprehensive

instrumentation and controls, including a Deluxe Driver Information Centre. And as a test drive will reveal, the riveting drama of driving Impala SS receives musical accompaniment from the powerful Bose eight-speaker sound system.

KEY FEATURES:

- 303 hp 5.3L V8 engine with Active Fuel Management™
- Heavy-duty 4-speed automatic transmission
- Dual piston front brake calipers and 4-wheel disc brakes with ABS
- Electronic traction control

- 18-in. aluminum wheels
- Dual exhaust outlets with chrome tips
- Specific SS rear deck-lid spoiler
- XM Satellite Radio and Bose 8-speaker sound system.

The Impala SS instrument panel features race-inspired analogue gauges with chrome trim rings and Graphite trim.



IMPALA

THERE'S A LOT MORE TO IMPALA.

There is an Impala tailored to your specific driving personality. In addition to the SS, there are three Impala models to select from: LS, LT and LTZ. All three feature technologically advanced V6 engines. The 211 horsepower 3.5L V6 features torque-boosting variable valve timing (VVT) and is standard on LS and LT; the 242 horsepower 3.9L V6 with Active Fuel Management™ is standard on LTZ. Scan the specifications and you'll see that there's almost as much to distinguish each Impala model as there is to differentiate their drivers.



CENTURY
AUTO.CA

Impala LTZ, shown in Imperial Blue Metallic with available equipment.

IMPALA INTERIOR



All Impalas include an auxiliary audio input jack for portable audio devices, enabling you to connect your favourite MP3 player without encountering audio interference. A factory-installed XM Satellite Radio* receiver is standard on SS and available on other models. It enables you to tune into up to 100 channels of commercial-free music with digital-quality sound.

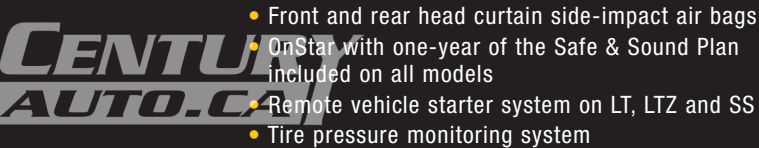
*Includes three free trial months beyond which service fees apply. Available in 10 Canadian provinces and 48 contiguous United States.



PERSONAL SPACE. AND PERSONALIZED COMFORT.

The first thing you'll notice when you take your seat inside Impala is the space – a generous amount of personal space, regardless of your seating position. Next up is the high level of personalized comfort provided by the

standard power eight-way driver's seat. Then you can let Impala's host of amenities take your convenience to another level. An abundance of space, with an abundance of amenities. Impala.



KEY FEATURES:

- Front and rear head curtain side-impact air bags
- OnStar with one-year of the Safe & Sound Plan included on all models
- Remote vehicle starter system on LT, LTZ and SS
- Tire pressure monitoring system

Impala LTZ interior with Nuance leather-appointed seating surfaces, shown in Neutral.

- Power 8-way driver's seat
- Dual-zone climate controls on LT, LTZ and SS; single-zone on LS
- Deluxe Driver Information Centre with compass and exterior temperature displays, standard on LT, LTZ and SS
- CD player with MP3 playback on LT, LTZ and SS; CD player on LS.

IMPALA TECHNOLOGY

A SELF-GUIDED TOUR OF IMPALA'S ENGINEERING.

Still thinking about the lure of V8 power? With Impala, that's only the starting point – albeit a very powerful one. The real story with Impala is how a consistently high quality standard was applied to every aspect of its engineering, from the way the engine is mounted to the precise assembly of components. Even the wiper blades were designed for better performance and reduced noise. To fully appreciate how Impala redefines today's sedan, you need to learn more. Read on.

1. TORQUE AXIS ENGINE MOUNTS

Constant and consistent torque is applied to each driveshaft, thanks to a combination of the design of the engine mounts and the tripod universal joints, and the fact that the driveshafts are manufactured to achieve equal stiffness. A 50/50 weight distribution over each drive wheel also contributes to minimizing torque steer.

2. ALUMINUM ENGINE CRADLE

The very stiff yet exceedingly lightweight engine cradle reduces the amount of road noise and engine vibration that may penetrate Impala's interior.

3. GM OIL LIFE SYSTEM

The GM Oil Life System alerts you when it's time to change the engine oil. The system could extend the distance between oil changes up to 12,000 km (7200 mi.).** The result can be fewer oil changes, reducing service requirements and the use of non-renewable resources.

4. INNOVATIVE WIPER BLADE DESIGN

The flat wiper blade design minimizes streaking and wind noise by pre-forming the blade to conform to the curvature of the windshield.

5. HEAD CURTAIN SIDE-IMPACT AIR BAGS

Every Impala features the added protection provided by front and rear side air bags.*

6. DUAL-STAGE FRONTAL AIR BAGS

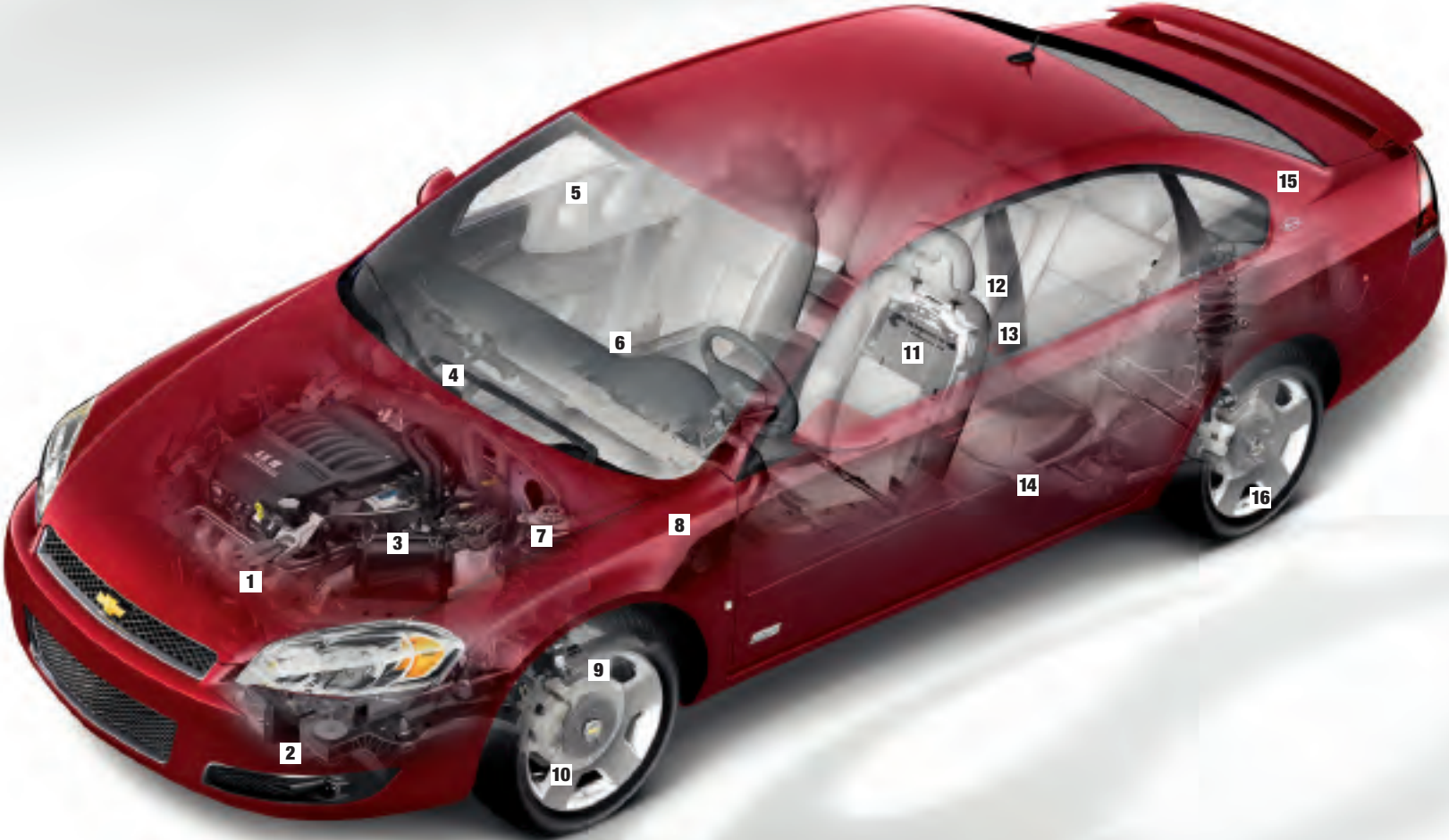
Standard dual-stage frontal air bags* are complemented by a front Passenger Sensing System that deactivates the air bag when the passenger seat is not being used, or when it is occupied by a child or small adult.

7. RIDE QUALITY

Impala's refined ride is the product of an enhanced 4-wheel independent suspension system that incorporates 4-stage strut valving and twin-tube dampers.

8. QUIET STEEL

By sandwiching a layer of viscoelastic material between the layers of steel that separate the engine and the passenger compartment, Impala's Quiet Steel technology helps minimize the exterior noise that can penetrate the passenger compartment.



9. BRAKE PERFORMANCE

Electronic brake force distribution helps optimize brake performance by adapting to different loads, traction and vehicle speeds. Included with the available anti-lock braking system.

10. ELECTRONIC TRACTION CONTROL

Helping reduce wheelspin when accelerating on slippery surfaces, the full-function traction control system monitors wheelspin, then controls it by reducing engine power and modulating the brakes. Standard on LTZ and SS. Included with the available anti-lock braking system on LS and LT.

11. FRONT-SEAT STRUCTURE

Tubular reinforcing members work with a rigid box seat structure to help dissipate the energy of a moderate to severe side impact by transferring the force laterally.

12. SAFETY CAGE CONSTRUCTION

Impala surrounds you and your passengers with a protective, heavy-gauge reinforced-steel cage that helps prevent intrusions into the passenger compartment caused by a collision.



13. SAFETY BELT PRE-TENSIONERS

During a moderate to severe collision, the outboard front safety belt pre-tensioners are designed to cinch in, restricting forward movement.

14. WORLD-CLASS GAP TOLERANCES

Another measure of Impala's quality: the gaps between body panels are kept to microscopic tolerances, matching those found on much more expensive automobiles.

15. ROBOTIC BODY WELDING

To achieve high standards of precision, every one of Impala's 3153 body welds is performed robotically. In addition, all 1413 spot welds are done robotically at GM's fabrication plants. Robotic installation is also used to assemble large or fragile components.

16. TIRE PRESSURE MONITORING SYSTEM

The system detects when tire pressure is either too high or too low, and then alerts you through the Driver Information Centre. Standard on all models.

*A NOTE ON CHILD SAFETY: Always use safety belts and proper child restraints, even in vehicles equipped with air bags. Even with the Passenger Sensing System, children are safer when properly secured in a rear seat. Never place a rear-facing infant restraint in the front seat of any vehicle equipped with an active air bag. Refer to the vehicle Owner's Manual and child safety seat instructions for more information.

**Maintenance needs vary with different uses and driving conditions. Refer to the Impala Owner's Manual for more details.

FLEXFUEL E85 ETHANOL

The FlexFuel 3.5L V6 engine can run on gasoline or a blend of up to 85 percent ethanol and 15 percent gasoline. This E85 renewable fuel is made from biomaterial, helping reduce carbon dioxide emissions, decreasing greenhouse gases and our dependence on petroleum. The 211 hp FlexFuel 3.5L V6 is available on Impala LS and LT.

ACTIVE FUEL MANAGEMENT™

The 303 hp 5.3L small-block V8 engine on Impala SS and the 242 hp 3.9L V6 VVT on Impala LTZ both feature the Active Fuel Management™ system. It increases fuel efficiency by shutting down half the engine's cylinders under low-demand operating conditions, such as when driving at highway speeds or on level stretches of road. When power demands increase, the engines return all cylinders to operation. Cylinder deactivation and reactivation are barely perceptible.



VARIABLE VALVE TIMING

The 211 hp 3.5L V6 and 242 hp 3.9L V6 engines both feature variable valve timing (VVT). It helps maximize power by continuously adjusting the opening and closing of an engine's valves using an electronically controlled variable camshaft phaser.

IMPALA VERSATILITY

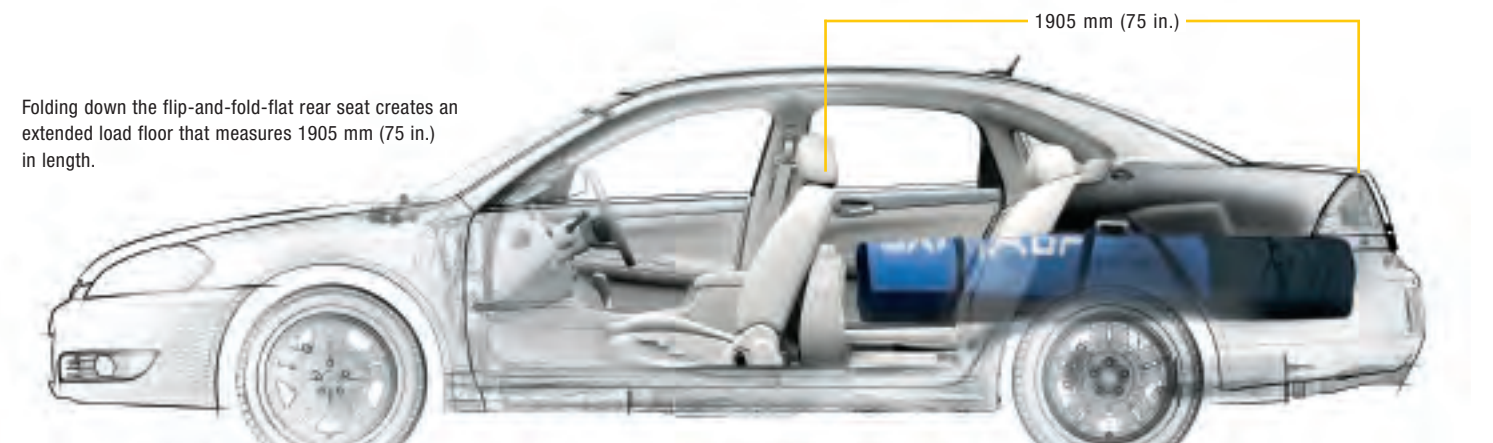
LARGE CAPACITY – PLUS THE CAPACITY TO UNFOLD.

Powerful. Comfortable. Well-engineered. Safe. Would you be surprised to learn that Impala is also one remarkably versatile sedan? It can seat up to six, and its 527 L (18.6 cu. ft.) trunk is large enough to handle their luggage. So what happens when you need even more cargo capacity? LTZ and SS models make it easy, thanks to their innovative flip-and-fold-flat rear seats. Yet one more capacity of the Chevrolet Impala.

Impala's first-in-class flip-and-fold-flat rear seats provide enhanced versatility. Shown here with the 3-passenger seat upright. Standard on LTZ and SS, available on LS and LT.

Beneath the seat cushions you'll find a handy storage tray made of composite material that spans the full width of the floor.

Maximize cargo capacity by folding down both seatbacks to open up a convenient, flat load floor.



Folding down the flip-and-fold-flat rear seat creates an extended load floor that measures 1905 mm (75 in.) in length.

KEY FEATURES:

- Flip-and-fold-flat rear seats standard on LTZ and SS, available on LS and LT
- Seatback storage
- Front flip-and-fold centre cushion/console on 6-passenger models
- Centre console on 5-passenger models
- Power trunk release
- Rear cargo net
- Cargo capacity of 527 L (18.6 cu. ft.).

ONSTAR

OnStar* uses advanced communications technology to enhance your safety, security and convenience. OnStar Advisors can provide a wealth of information and perform a variety of diagnostic services.



They can also provide assistance in an emergency. No wonder more than 4 million people have become OnStar subscribers and over 12 million calls are made each month on the built-in voice-activated, hands-free system. OnStar and one-year of the Safe & Sound Plan are standard on all Impala models. See your dealer for more information on plans and services.

*OnStar services require vehicle electrical system (including battery), wireless service, and GPS satellite signals to be available and operating for features to function properly. Not all OnStar features are available on all vehicles. OnStar acts as a link to existing emergency service providers. OnStar Hands-Free Calling requires a Hands-Free enabled vehicle, prepaid minutes and existing OnStar service contract. Subscription Service Agreement required.

XM SATELLITE RADIO

What's convinced more than six million people to subscribe to XM Satellite Radio? How about the largest playlist on the planet, with musical genres that span everything from decades to dance, rock to rap and country to classical – broadcasting the most commercial-free music in digital quality sound? Or is it the news, talk, comedy and sports channels – including more than 1,000 NHL games – and all available from coast to coast?* XM has revolutionized radio as we know it. And now you can enjoy XM Satellite Radio in your next General Motors vehicle – GM is the first automaker to offer factory-installed satellite receivers. Ask your dealer for more information.



*Includes three free trial months beyond which service fees apply. Available in 10 Canadian provinces and 48 contiguous United States.

IMPALA STANDARD & OPTIONAL FEATURES

SAFETY AND SECURITY	LS	LT	Ltz	SS
Air bags – dual-stage, driver and front-passenger, frontal with Passenger Sensing System	S	S	S	S
Air bags – front to rear, side head curtain	S	S	S	S
Brake/transmission shift interlock	S	S	S	S
Door locks – power, programmable with lock-out protection	S	S	S	S
Door locks – rear doors, child-security	S	S	S	S
Headlights – Daytime Running Lights with automatic light control	S	S	S	S
Keyless entry system – remote, includes Panic feature	S	S	S	S
OnStar In-Vehicle Communications and Assistance Service – includes one-year of the Safe & Sound Plan	S	S	S	S
Safety restraints – LATCH (Lower Anchors and top Tethers for Children), rear seats	S	S	S	S
Theft-deterrent system – audible/visible content theft alarm	–	–	S	S
Theft-deterrent system – PASS-Key III+ with immobilizer	S	S	S	S
Traction control – electronic, full-function, engine and brakes	0 ¹	0 ¹	S	S

MECHANICAL	LS	Lt	Ltz	SS
Battery – with run-down protection	S	S	S	S
Brakes – power, 4-wheel disc	S	S	S	S
Brakes – 4-wheel anti-lock braking system (ABS)	0 ²	0 ²	S	S
Drive – front-wheel	S	S	S	S
Engine – 3.5L V6 VVT with SFI Horsepower – 211 @ 5800 rpm; Torque – 214 lb.-ft. @ 4000 rpm	S	S	–	–
Engine – 3.5L V6 VVT with FlexFuel (gasoline/ethanol) Horsepower – 211 @ 5800 rpm; Torque – 214 lb.-ft. @ 4000 rpm	0	0	–	–
Engine – 3.9L V6 VVT with SFI and Active Fuel Management™ Horsepower – 242 @ 6000 rpm; Torque – 242 lb.-ft. @ 4800 rpm	–	–	S	–
Engine – 5.3L V8 with SFI and Active Fuel Management™ Horsepower – 303 @ 5600 rpm; Torque – 323 lb.-ft. @ 4400 rpm	–	–	–	S
Engine – block heater	S	S	S	S
Exhaust system – aluminized stainless steel	S	S	S	S
Exhaust system – dual outlets	–	–	S	–
Exhaust system – dual muffler, dual outlets with bright tips	–	–	–	S
Steering – power, rack-and-pinion	S	S	S	S
Suspension – 4-wheel independent	S	S	S	S
Suspension – Soft Ride	S	S	S	–
Suspension – Sport	–	–	–	S
Transmission – 4-speed automatic with overdrive	S	S	S	–
Transmission – heavy-duty 4-speed automatic with overdrive	–	–	–	S
Vehicle starter system – remote	0 ³	S	S	S

EXTERIOR	LS	Lt	Ltz	SS
Fog lights	–	–	S	S
Glass – Solar-Ray, tinted	S	S	S	S
Grille – chrome surround	S	S	S	S
Grille – SS-specific	–	–	–	S
Mirrors – power remote control	S	S	–	S
Mirrors – power remote control, heated	–	–	S	0 ⁴
Mouldings – bodyside and rocker, body-colour	S	S	S	S
Spoiler – rear deck-lid	0	0	S	–
Spoiler – unique SS design	–	–	–	S

EXTERIOR (continued)	LS	Lt	Ltz	SS
Sunroof – power, sliding glass panel with sunshade ⁵	0	0	0	0
Tires – P225/60R16 all-season	S	S	–	–
Tires – P225/55R17 all-season	–	–	S	–
Tires – P235/50R18 all-season	–	–	–	S
Wheels – 16" x 6.5" steel with bolt-on wheel covers (A)	S	–	–	–
Wheels – 16" x 6.5" 5-spoke painted aluminum (B)	–	S	–	–
Wheels – 17" x 6.5" machined aluminum (C)	–	–	S	–
Wheels – 17" x 6.5" flangeless forged polished aluminum (E) ⁶	–	–	0	–
Wheels – 18" x 7" flangeless machined aluminum (D)	–	–	–	S
Wheels – 18" x 7" flangeless bright polished aluminum	–	–	–	0
Wheels – 18" x 7" chromed 5-triangular double-spoke aluminum ⁶	–	–	–	0
Windshield wipers – 2-speed with variable delay (intermittent)	S	S	S	S
LS Sport Package – flip-and-fold-flat rear seat, remote vehicle starter system with Deluxe Driver Information Centre, 16" x 6.5" 5-spoke painted aluminum wheel (B) and rear deck-lid spoiler	0	–	–	–

INTERIOR	LS	Lt	Ltz	SS
Accents – simulated wood grain	S	S	S	–
Accents – brushed sterling	0	0	0	–
Accents – techno steel	–	–	–	S
Air conditioning – manual	S	–	–	–
Air conditioning – manual, dual-zone	–	S	S	S
Air filtration system – pollen filter	S	S	S	S
Cargo convenience net	S	S	S	S
Cruise control – steering wheel-mounted, electronic with resume, coast and decelerate/accelerate features	S	S	S	S
Defogger – electric rear-window	S	S	S	S
Floor mats – front and rear, carpeted	S	S	S	S
Heater ducts – rear seat, floor	S	S	S	S

Instrumentation – analogue gauges (includes speedometer, tachometer, coolant temperature and fuel gauges) and Driver Information Centre (includes system problem notification, low oil pressure, GM Oil Life System, low oil level, low fuel level, low washer fluid level and trunk open indicators)	S	S	S	S
Instrumentation – Deluxe Driver Information Centre (includes exterior temperature and compass display)	0	S	S	S
Instrumentation – tire pressure monitoring system	S	S	S	S
Lights – courtesy, delayed illuminated entry/exit, theatre dimming, front reading rear courtesy/reading and trunk	S	S	S	S
Retained accessory power	S	S	S	S
Steering column – tilt adjustable	S	S	S	S
Steering wheel – leather-wrapped with sound system controls	0 ⁷	S	S	S
Sunshades – LH and RH padded; sliding extendable, with vanity mirrors	S	S	–	–
Sunshades – LH and RH padded; sliding extendable, with illuminated vanity mirrors	–	–	S	S
Trunk – release, power remote	S	S	S	S
Universal home remote – 3-channel transmitter	–	–	0	0
Windows – power, driver's express-down feature and passenger window lock-out features	S	S	S	S
Mirror Package – includes electrochromic auto-dimming and heated exterior rear-view mirrors	–	–	S	0

1 Included with available 4-wheel anti-lock braking system (ABS).
2 Includes full-function traction control.
3 Requires Deluxe Driver Information Centre.
4 Included with Mirror Package.
5 Includes universal home remote 3-channel transmitter.
6 Dealer-installed accessory.
7 Included with up-level sound system.

SEATS	LS	Lt	Ltz	SS
Cloth front bucket seats – with 5-passenger seating, floor shifter and front floor console	S	S	S	–
Cloth front bucket seats – with 6-passenger seating, column shifter, flip-and-fold cushion/console	0	0	0	–
Front bucket seats with heated leather-appointed seating surfaces – with 5-passenger seating, floor shifter and power 8-way front-passenger adjuster	–	–	0	S
Front bucket seats with heated leather-appointed seating surfaces – with 6-passenger seating, column shifter, flip-and-fold cushion/console and power 8-way front-passenger adjuster	–	–	0	–
Power 8-way driver with manual lumbar adjuster and manual reclining front-passenger adjuster	S	S	S	S
Seatback – rear, 60/40 split-flip-and-fold-flat	0	0	S	S

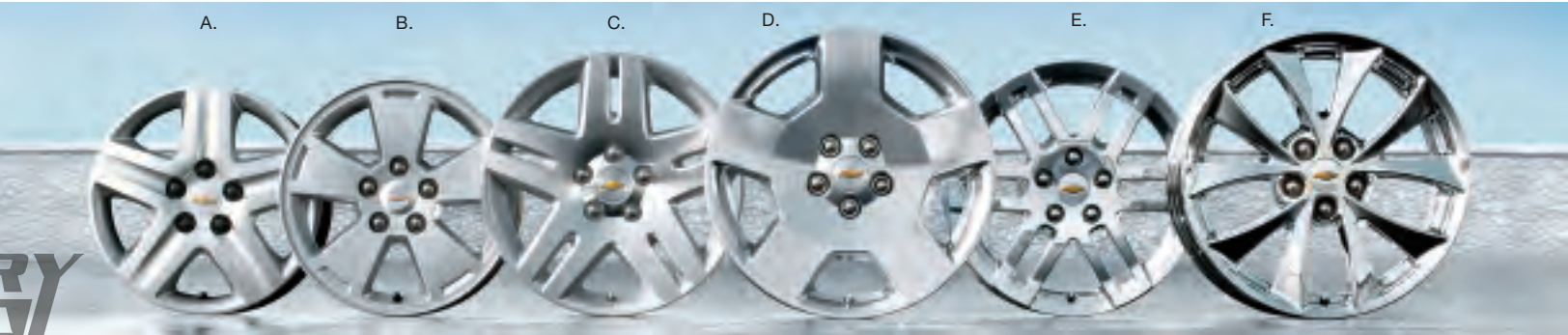
SOUND SYSTEMS	LS	Lt	Ltz	SS
All Impala sound systems include an electronically tuned AM/FM stereo with seek up/down, scan, auto tone control, speed-compensated volume control, auxiliary audio input jack, TheftLock and digital clock				
AM/FM stereo with CD player	S	–	–	–
AM/FM stereo with CD player, MP3 playback and Radio Data System (RDS)	0 ⁸	S	S	S
AM/FM stereo with in-dash 6-disc CD changer, MP3 playback and Radio Data System (RDS)	0 ⁸	0	0	0
XM Satellite Radio ⁹	0	0	0	S
6-speaker sound system	S	S	S	–
8-speaker Bose sound system	–	0 ¹⁰	0 ¹⁰	S
Bose XM Entertainment Package – includes Bose sound system and XM Satellite Radio ⁹	–	0	0	S

8 Includes leather-wrapped steering wheel with sound system controls.
9 Includes three free trial months beyond which service fees apply. Available in 10 Canadian provinces and 48 contiguous United States.
10 Requires up-level sound system.
S – Standard. 0 – Optional individually or in combination with other optional equipment.

TOWING
3.5L V6 VVT 2.86 final drive ratio; 454 kg (1000 lb.) maximum gross trailer weight†
3.9L V6 VVT 3.29 final drive ratio; 454 kg (1000 lb.) maximum gross trailer weight†
5.3L V8 2.93 final drive ratio; 454 kg (1000 lb.) maximum gross trailer weight†

*When properly equipped, includes weight of trailer, cargo, passengers and equipment. All towing recommendations are subject to change. Trailer tongue load should be 10% of the maximum trailer weight but should not exceed the load rating specified for that vehicle, engine or hitch combinations. See your dealer or refer to the Impala Owner's Manual for details.

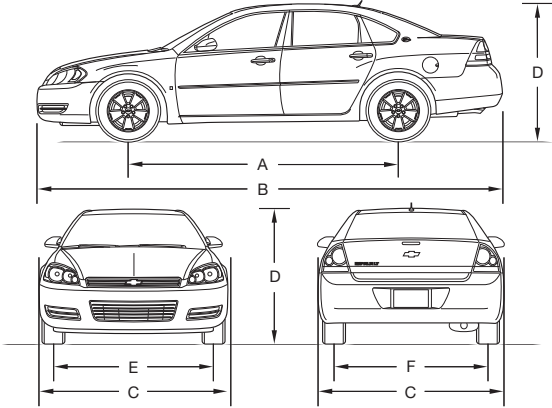
WHEELS



A – 16" bolt-on wheel cover
B – 16" 5-spoke painted aluminum
C – 17" machined aluminum
D – 18" flangeless machined aluminum (also available in bright polished version)
E – 17" flangeless forged polished aluminum*
F – 18" chromed 5-triangular double-spoke aluminum*

*Dealer-installed accessory.

DIMENSIONS



EXTERIOR, mm (in.)	
Wheelbase (A)	2807 (110.5)
Length (B)	5090 (200.4)
Width (C)	1851 (72.9)
Height (D)	1491 (58.7)
Front tread (E)	1585 (62.4)
Rear tread (F)	1562 (61.5)

INTERIOR, mm (in.) front/rear	
Headroom	1001/961 (39.4/37.8)
Legroom	1076/954 (42.3/37.6)
Shoulder room	1490/1488 (58.7/58.6)
Hip room	1432/1452 (56.4/57.2)

CAPACITIES/WEIGHT	
Trunk, L (cu. ft.)	527 (18.6)
Fuel tank, L (imp. gal.)	64 (14.0)
Curb weight (est.), kg (lb.)	Impala LS 1611 (3553) Impala LT 1649 (3637) Impala LTZ 1667 (3675) Impala SS 1683 (3712)

EXTERIOR COLOURS



Colours may not be exactly as illustrated due to restrictions of the printing process. Please see your Sales Consultant for specific colour and model availability.

*Denotes availability on Impala SS.

THE GM WARRANTY:†

The New Vehicle Limited Warranty is your promise of total warranty protection. It applies to the first owner and all future owners of the vehicle, and covers repairs to correct vehicle defects related to materials or workmanship during the warranty period. The warranty includes:

- 3-year/60,000 km* Base warranty coverage
- 6-year/160,000 km* rust-through perforation coverage
- 8-year/130,000 km* coverage on catalytic converters and powertrain control modules (PCMs).

†Conditions and limitations apply. *Whichever comes first.

OTHER OWNERSHIP PRIVILEGES AND PROGRAMS:‡

- **Roadside Assistance** – 24/7 service via toll-free number during the Base warranty period, anywhere in Canada or the United States
- **Courtesy Transportation** – may be offered during the Base warranty period
- **GM Protection Plan (GMPP)** – the only extended services contract backed by the resources and commitment of General Motors, GMPP may be purchased at the time of your sale or lease, or subsequently during the Base warranty period†
- **GM Goodwrench Service** – with GM-certified technicians and GM-approved parts, nobody knows your GM vehicle better.

†Conditions and limitations apply.

TO HELP YOU PURCHASE OR LEASE A NEW VEHICLE:

- **GMAC Financing** – on the spot financing at your GM dealership††
 - **GMAC SMARTLEASE** – a smart alternative to traditional financing††
 - **GM Student Bonus Program** – GM will cover the first two purchase finance or lease payments and the lease security deposit on eligible new GM vehicles for students and recent graduates of high school, college or university†
 - **The GM Card** – eligible cardholders may be able to redeem up to \$3500 on GM Card® Earnings toward the total purchase price or lease down payment on selected vehicles†. For more information on The GM Card please call 1-800-461-3279.
- †Conditions and limitations apply. ††Subject to eligibility.

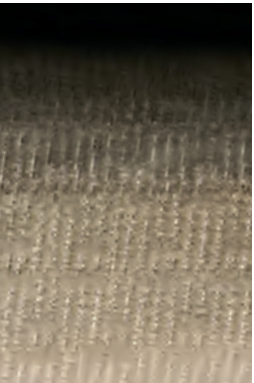
INFORMATION RESOURCES:

You can find more information about these programs from your GM dealer, or at these information centres:

- The GM website at gmcanada.com
- The GM Customer Communication Marketing Centre at 1-800-GM-DRIVE (1-800-463-7483 or 1-800-263-3830 for TDD users)
- For information about GMAC visit gmcanada.com or call 1-800-616-4622.



INTERIOR FABRICS

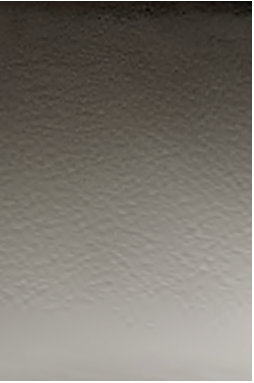


52C – Neutral Cloth

19C – Ebony Cloth

EXTERIOR/INTERIOR COLOUR COMPATIBILITY				
▼ Exterior	Interior ►	19 – Ebony	52 – Neutral	83 – Titanium
21 – Laser Blue Metallic*		•	•	•
27 – Precision Red*		•	•	•
37 – Imperial Blue Metallic		•	•	•
40 – White*		•	•	•
41 – Black*		•	•	•
42 – Dark Silver Metallic		•	•	•
49 – Bordeaux Red		•	•	•
53 – Amber Bronze Metallic		•	•	•
67 – Silverstone Metallic*		•	•	•
80 – Red Jewel Tintcoat**		•	•	•

*Denotes availability on Impala SS.
**Interim availability.



832 – Titanium Leather

192 – Ebony Leather

A WORD ABOUT THIS BROCHURE

Some of the equipment shown or described throughout this brochure may be available at extra cost. We have tried to make this brochure comprehensive and factual. We reserve the right, however, to make changes at any time, without notice, in prices, colours, materials, equipment, specifications, models and availability. Specifications, dimensions, measurements, ratings and other numbers in this brochure and other printed materials provided at the dealership or affixed to vehicles are approximates based upon design and engineering drawings and prototypes and laboratory tests. Your vehicle may differ due to variations in manufacture and equipment. Since some information may have been adapted since the time of the printing, please check with your GM dealer for complete details. General Motors of Canada Limited reserves the right to lengthen or shorten the model year for any product, for any reason, or to start and end model years at different times.

A WORD ABOUT ASSEMBLY

GM vehicles are equipped with engines and components produced and assembled by different operating units of General Motors, its subsidiaries and suppliers and these engines and components may change or be obtained from different sources from time to time. All such engines and components are approved for use in GM vehicles. Certain equipment ordered may be unavailable at the time of assembly and we suggest that you verify that your vehicle includes the equipment you ordered, or if there are changes, that they are acceptable to you.

TRADEMARKS

The marks appearing in this brochure including, but not limited to: General Motors, GM, the GM Canada emblem, the GM Canada website address, the GM Accessories logo, Buick, Cadillac, Chevrolet, the Chevrolet emblem, GMC, HUMMER, Pontiac, Saab, Saturn, HHR, Impala, Solstice, SS and their respective logos, emblems, slogans and vehicle model names and body designs; and other marks such as Active Fuel Management, Solar-Ray and SMARTLEASE are trademarks of General Motors Corporation and/or General Motors of Canada Limited, its subsidiaries, affiliates or licensors.

GMAC is a registered trademark of the General Motors Acceptance Corporation.

OnStar, the OnStar logo and the OnStar button are registered trademarks of the OnStar Corporation. PASS-Key III+ and TheftLock are registered trademarks of Delphi Automotive Systems.

Bose is a registered trademark of the Bose Corporation.

Radio Data System (RDS) is a registered trademark of the U.S. National Association of Broadcasters.

Quiet Steel is a registered trademark of Material Sciences Corporation.

The XM name and related logos are registered trademarks of XM Satellite Radio Inc.

COPYRIGHT

©Copyright 2006 General Motors of Canada Limited. All Rights Reserved. All text, images, graphics, and other materials in this brochure are subject to the copyright and other intellectual property rights of General Motors Corporation and/or General Motors of Canada Limited. These materials may not be reproduced, distributed or modified without the express written permission of General Motors Corporation and/or General Motors of Canada Limited.

Printed in Canada, July 2006.