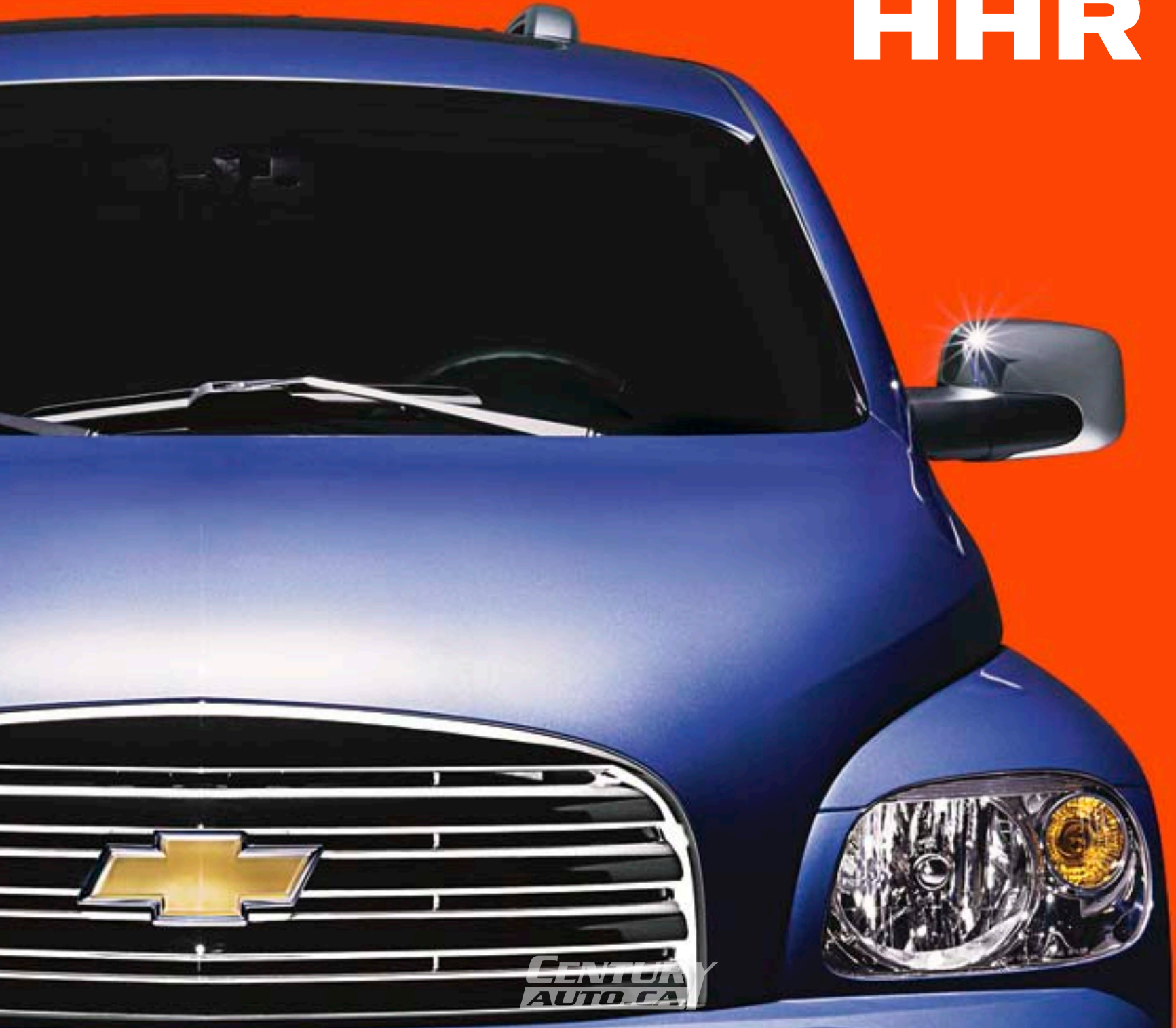


2006 |  CHEVROLET

**HHR**



CENTURY  
AUTO.CA

# 2006 HHR



**CENTURY**  
**AUTO.CA**

**TAKE IT TO THE STREETS. Don't hold back. In the way you live. Or in what you drive. Introducing the street rod with the advanced versatility of a utility vehicle. The vehicle with a personality as large as its cargo bay. With retro Chevy styling cues. And with sporty performance supplied by its ECOTEC engines. The utility vehicle with street cred. The all-new 2006 Chevrolet HHR. For All Life's Roads.**

**CHEVROLET  FOR ALL LIFE'S ROADS**

For more information about HHR visit our Web site at [hhr.gmcanada.com](http://hhr.gmcanada.com)



**HHR**

2006

**CENTURY  
AUTO.CA**



**LIVE. DRIVE. REBEL.** You never let yourself get boxed in by conventional thinking. So why allow yourself to be boxed in by a conventional form of driving, when you can have a vehicle that makes room for all aspects of your life? Don't just drive - rebel. In the all-new HHR.

HHR LT, shown in Daytona Blue Metallic with available features.



**CENTURY  
AUTO.CA**



# HHR

2006

**CENTURY**  
**AUTO.CA**



CENTUR  
AUTO.SA





The Bright Chrome Exterior Appearance Package is available on HHR LT.



Satin nickel door handles are standard on all HHR models.



The rear liftgate appliqué features a touchpad latch release.



### **LOVE TO BE THE CENTRE OF ATTENTION?**

Despite the fact that HHR is categorized as a small utility, it makes a larger-than-life impression. Because it stands tall. And because it stands out. Not only in the way it looks, but also the way it performs with the LT's 172 horsepower 2.4L ECOTEC engine with variable valve timing (VVT). A vehicle that's as riveting to drive as it is to stare at. HHR.



HHR LT interior, shown in Gray with available features.

**THE SIGHTLINES ARE AS GOOD AS THE TUNES.** Inside HHR you get a front-row-centre view of the world around you, thanks to the elevated seating position. That position can be optimized for your comfort with a standard driver's seat height adjuster. Now hear this: the standard six-speaker sound system not only includes a CD player, but also an auxiliary input for your MP3 player. HHR – it all sounds good.

**CENTURY**  
**AUTO.CA**





INTERIOR

HHH



The standard Driver Information Centre relays information about everything from exterior temperature and fuel range to the status of your GM Oil Life System and various personalization settings.



The chrome transmission shifter is standard. A leather-wrapped shifter is available.



An in-dash six-disc CD changer is available. All stereos feature an auxiliary input jack for personal MP3 players (not included).



The available seven-speaker Pioneer Premium sound system includes a rear subwoofer and 260-watt amplifier.

**CENTURY**  
**AUTO.CA**



The front-passenger and second-row seatbacks can be folded flat to create an extended loading floor.



The adjustable rear cargo shelf also serves as a tabletop – perfect for tailgate parties.



Three concealed rear storage bins keep valuables out of sight.



Additional storage space is provided under the rear load floor.

**GOTTA LEARN TO SHARE.** HHR is designed with a thorough understanding of the fact that interior space must be shared, not only by your friends and family, but also by their stuff. It is an intelligent approach to versatility that includes an auxiliary storage compartment positioned at the centre of the instrument panel. HHR – learn to share all over again.

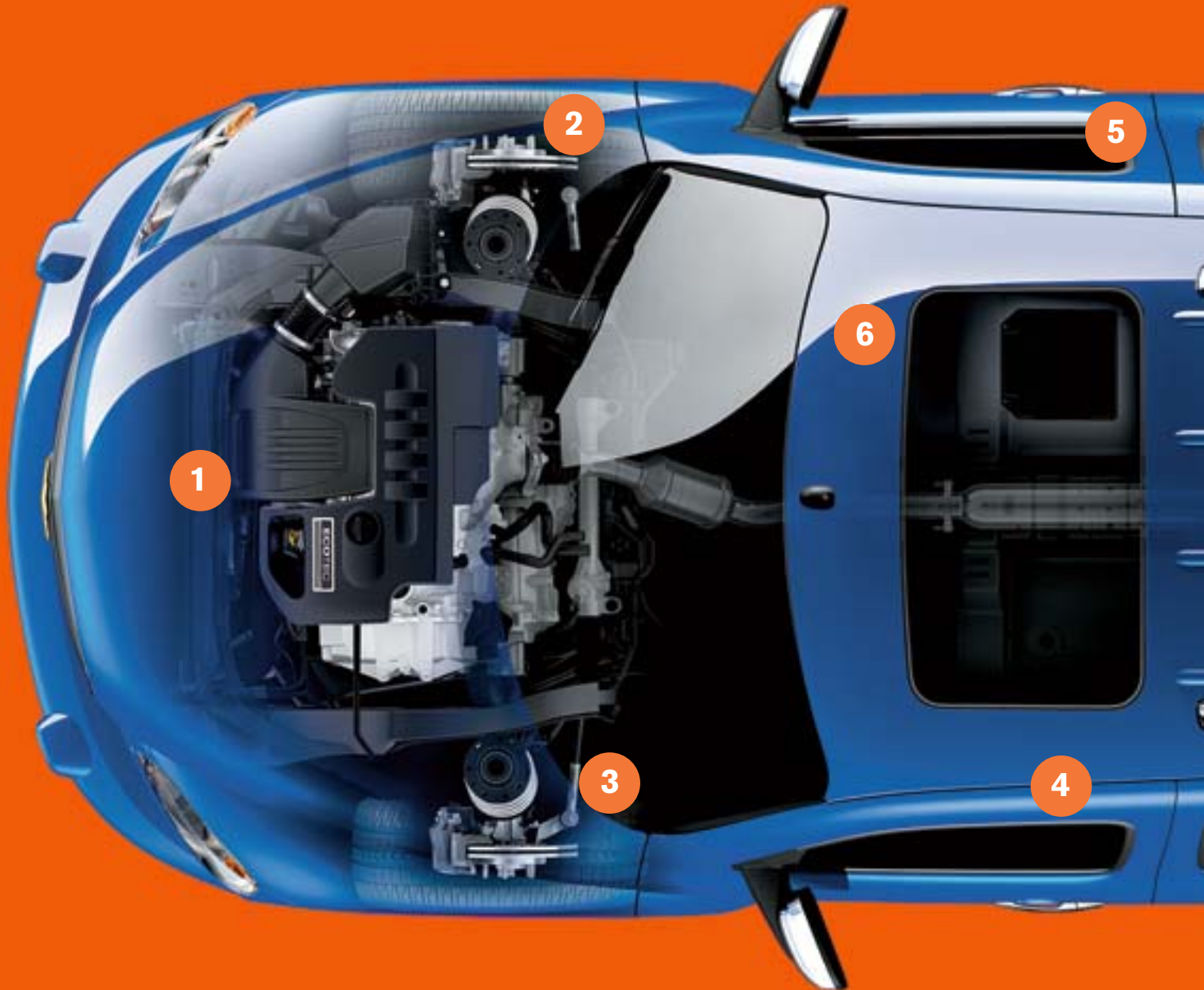


The auxiliary storage compartment is positioned at the top centre of the instrument panel, for easy access.

**HHR**  
VERSATILITY



**BRIDGING GAPS.** HHR is breaking through not only with its style and versatility, but also with its engineering. One example: its Quiet Steel technology sandwiches a layer of elastic material between two thin sheets of steel, to produce a quieter ride. And gap tolerances between exterior body panels never exceed a very tight 3.5 millimetres. Getting an idea of HHR's exceptionally high level of quality? HHR - there are no gaps in this well-rounded package.



## 1. ECOTEC ENGINES

Both the 2.2L and 2.4L ECOTEC engines feature a dual overhead camshaft configuration to help maximize output and an aluminum engine block that reduces weight without sacrificing strength.

## 2. BRAKING PERFORMANCE

HHR features standard front disc/rear drum brakes with ventilated rotors and single piston calipers for assured stopping power. Four-wheel anti-lock brakes (ABS) are available.

## 3. SPEED-SENSITIVE ELECTRIC POWER STEERING

Speed-sensitive electric power steering eliminates the hydraulics of a conventional power steering system, reducing weight and fuel consumption. It uses electronic sensors to react within thousandths of a second for precision control and responsiveness.

## 4. SIDE-IMPACT AIR BAGS\*

Dual-stage frontal air bags are standard on all HHR models. In addition, head curtain side-impact air bags for both front and rear passengers are available.

## 5. QUALITY MANUFACTURING

HHR's rigid body structure reduces noise and vibration, and makes it possible to tune suspension components more precisely. Gap tolerances for exterior body panels are never more than 3.5 mm, matching the quality achieved in much more expensive vehicles.

## 6. PASSENGER SENSING SYSTEM

The Passenger Sensing System detects the weight of the passenger in the front seat and automatically suppresses air bag deployment when appropriate.\*

## 7. LATCH SYSTEM

The standard rear-seat LATCH (Lower Anchors and top Tethers for Children) child security system makes it easier to secure child safety seats.

\*A NOTE ON CHILD SAFETY: HHR is equipped with a Passenger Sensing Air Bag System. Even with the Passenger Sensing System, always use safety belts and proper child restraints, even in vehicles equipped with air bags. Children are safer when properly secured in a rear seat. Never place a rear-facing infant restraint in the front seat of any vehicle equipped with an active frontal air bag. Refer to the vehicle Owner's Manual and child safety seat instructions for more information.





**IT'S NOT JUST AN HHR. IT'S YOUR HHR.** HHR is built to reflect who you are. But don't stop there. You can transform your HHR into a personalized expression of your style and priorities – with GM Accessories. They are the only accessories that are integrated into the process of designing your vehicle, ensuring excellent fit, finish and functionality. And only GM Accessories are backed by GM's 3-year/60,000 km New Vehicle Limited Warranty.\* They can also be included in your new-vehicle lease or finance agreement through GMAC. Ask your dealer for a complete list of the GM Accessories available for HHR, or visit [gmcanada.com](http://gmcanada.com)

\*Whichever comes first, when permanently installed by the dealer at the time you purchase or lease your new vehicle.



**GM Accessories available for HHR include:**

- Body-colour running boards
- Rear spoiler
- Stainless steel exhaust tip
- Bumper cover
- Moulded splash guards
- Doorsill plates
- All-weather floor mats
- Front end cover.



**Accessories**

**CENTURY  
AUTO.CA**





Chevrolet is known for building vehicles that deliver excellent value and dependability. One important aspect of Chevrolet value is represented by the advanced safety, security and convenience of OnStar.\* OnStar uses advanced communications technology to enhance your peace of mind whenever you're in your Chevrolet. All it takes is a single push of the blue OnStar button usually located on the interior rear-view mirror, in the overhead console, or near the radio display – the button connects you with one of our specially trained OnStar Advisors. They are standing by, ready to provide support 24 hours a day, 365 days a year.

What can OnStar Advisors do for you? They can provide a wealth of information and perform a variety of services, including a remote diagnostic check of your vehicle's engine and electrical components. In an emergency, an Advisor will attempt to locate your vehicle, find out what assistance you need, and notify nearby emergency service providers. And if air bags are deployed in your vehicle, an Advisor will contact you to determine if you are in need of assistance.

Another convenient feature is OnStar Hands-Free Calling, a hands-free, voice-activated wireless technology integrated into your vehicle. It's there in case your hand-held phone is lost, forgotten or has a low battery. Even better, there are no additional monthly fees, or additional long distance and roaming charges. And as a new customer, you will receive 30 complimentary minutes good for two months after activation.

Now you can enjoy the peace of mind that comes with knowing you're doing all you can to help keep you, your family, and your vehicle safe. Just ask the almost 150,000 people who have become OnStar subscribers in Canada. How hard does OnStar work for you? The facts speak for themselves: every month in Canada OnStar Advisors handle an average of 9100 routing calls, 2500 emergency calls, 2600 door unlocks, and 625 Roadside Assistance dispatches.

OnStar offers two different service plans, allowing you to select the services that are most convenient for you. OnStar with one year of the Safe & Sound Plan is available on all HHR models. In addition, the available Directions & Connections Plan offers all of the safety and security services included in the Safe & Sound Plan, plus you'll have access to driving directions and information and convenience services and RideAssist. See your dealer for more information on plans and services.

\*OnStar services require vehicle electrical system (including battery), wireless service, and GPS satellite signals to be available and operating for features to function properly. Not all OnStar features are available on all vehicles. OnStar Hands-Free Calling requires a Hands-Free enabled vehicle, existing OnStar service contract, and prepaid calling minutes, and is not available in Alaska and some other markets. Calls may be made to the U.S. and Canada only. OnStar voice recognition system may not work with some voices. OnStar acts as a link to existing emergency service providers. Subscription Service Agreement required. Due to the transition of the wireless industry from analogue to digital technology, as of January 1, 2008, OnStar plans to offer service only through equipment that operates on the digital network, which may require the purchase of a system upgrade for eligible vehicles. Call 1.888.4.ONSTAR (1.888.466.7827), (TTY 1.877.248.2080) or visit [onstar.ca](http://onstar.ca) for OnStar's Terms & Conditions, Privacy Policy, and system limitations and details.

## COMMITMENT

Every Chevrolet comes with peace of mind as a standard feature. We're not only committed to engineering and manufacturing vehicles that are rewarding to drive – we're equally committed to making the ownership experience just as responsive to your specific needs. You'll find that our comprehensive support programs make it easier to purchase or lease a Chevrolet HHR. They also help to protect you and your vehicle down the road. A powerful example of the level of protection you can expect is the GM TOTAL™ Warranty. It is so thorough it covers your vehicle – from the roof right down to the tires. So when you drive off the lot of your Chevrolet dealership, you can do so with total confidence. Peace of mind is knowing that your vehicle is built for the long haul, and is backed by a comprehensive warranty.

## THE GM TOTAL™ WARRANTY:<sup>†</sup>

The GM TOTAL™ Warranty is your promise of total warranty protection. It covers every new Chevrolet HHR for 3 years or 60,000 km.\* Complete vehicle repairs are covered,\*\* including parts and labour, with no deductible. The warranty includes:

- 3-year/60,000 km\* complete vehicle repair coverage
- 6-year/160,000 km\* corrosion perforation coverage
- 8-year/130,000 km\* coverage on catalytic converters and powertrain control modules (PCMs).

\*Whichever comes first. \*\*To correct any defects in material or workmanship occurring during the warranty period. Regular maintenance is not included, nor is excessive wear and tear caused by reckless or negligent driving.

## OTHER OWNERSHIP PRIVILEGES AND PROGRAMS:<sup>†</sup>

- **Roadside Assistance** – 24/7 service via toll-free number during your warranty period, anywhere in Canada or the United States
- **Courtesy Transportation** – may be offered during the warranty period
- **GM Protection Plan (GMPP)** – the only extended services contract backed by the resources and commitment of General Motors, GMPP may be purchased at the time of your sale or lease, or subsequently
- **GM Mobility Program** – you may be eligible for reimbursement of up to \$1000 (taxes included) for adaptive equipment for your GM vehicle
- **GM Accessories** – personalize your vehicle with GM Accessories, specifically engineered for your new GM vehicle
- **GM Goodwrench Service** – with GM-certified technicians and GM-approved parts, nobody knows your GM vehicle better.

## TO HELP YOU PURCHASE OR LEASE A NEW VEHICLE:

- **GMAC Financing** – on the spot financing at your GM dealership<sup>††</sup>
- **GMAC SMARTLEASE** – a smart alternative to traditional financing<sup>††</sup>
- **GM Student Bonus Program** – GM will cover the first two purchase finance or lease payments and the lease security deposit on eligible new GM vehicles for students and recent graduates of high school, college or university<sup>†</sup>
- **The GM Card** – eligible cardholders may be able to redeem up to \$3500 on GM Card® Earnings toward the total purchase price or lease down payment on selected vehicles. For more information on The GM Card please call 1-800-461-3279.<sup>†</sup>

## INFORMATION RESOURCES:

You can find more information about these programs from your GM dealer, or at these information centres:

- The GM Web site at [gmcanada.com](http://gmcanada.com)
- The GM Customer Communication Marketing Centre at 1-800-GM-DRIVE (1-800-463-7483 or 1-800-263-3830 for TDD users) – for information about any GM product or service, including The GM Card and the GM Mobility Program
- For information about GMAC visit [gmcanada.com](http://gmcanada.com) or call 1-800-616-4622.

<sup>†</sup>Conditions and limitations apply.

<sup>††</sup>Subject to eligibility.

## HHR STANDARD AND OPTIONAL FEATURES

SAFETY AND SECURITY	LS	LT
<b>Air bags</b> – dual-stage, driver and front-passenger, frontal with Passenger Sensing System	S	S
<b>Air bags</b> – front and rear, side head curtain <sup>1</sup>	O	O
<b>Brake/transmission shift interlock feature</b> (automatic transmission only)	S	S
<b>Door locks</b> – automatic power with lock-out protection	S	S
<b>Door locks</b> – rear door, child-security	S	S
<b>Headlights</b> – Daytime Running Lights with automatic light control	S	S
<b>Keyless entry system</b> – remote with content theft system	S	S
<b>OnStar In-Vehicle Communications and Assistance Service</b> – includes one-year Safe & Sound Plan <sup>2,3</sup>	O	O
<b>Safety belts</b> – front-shoulder height-adjustable	S	S
<b>Safety restraints</b> – LATCH (Lower Anchors and top Tethers for Children), rear seats	S	S
<b>Theft-deterrent system</b> – PASS-Key III+ immobilizer	S	S
<b>Theft-deterrent system</b> – content theft alarm, audible/visible	S	S
<b>Traction assist</b> – Enhanced Traction System (ETS)	O <sup>4</sup>	O <sup>4</sup>

MECHANICAL	LS	LT
<b>Battery</b> – AC Delco with run-down protection	S	S
<b>Brakes</b> – power, front disc/rear drum	S	S
<b>Brakes</b> – 4 wheel anti-lock braking system (ABS)	O	O
<b>Drive</b> – front-wheel	S	S
<b>Engine</b> – 2.2L ECOTEC L4 with SFI Horsepower – 143 @ 5600 rpm, Torque – 150 lb.-ft. @ 4000 rpm	S	–
<b>Engine</b> – 2.4L ECOTEC L4 VVT with SFI Horsepower – 172 @ 6200 rpm, Torque – 162 lb.-ft. @ 5000 rpm	–	S
<b>Engine block heater</b>	S	S
<b>Exhaust system</b> – aluminized stainless steel	S	S
<b>Exhaust system</b> – high-polished tip	–	S
<b>Steering</b> – power, electric, rack-and-pinion	S	S
<b>Suspension</b> – front independent/rear semi-independent	S	S
<b>Suspension</b> – Touring	S	S
<b>Transmission</b> – 5-speed Getrag manual with overdrive	S	S
<b>Transmission</b> – 4-speed automatic with overdrive	O <sup>5</sup>	O <sup>5</sup>
<b>Vehicle starter system</b> – remote	O <sup>6</sup>	O <sup>6</sup>

EXTERIOR	LS	LT
<b>Door handles</b> – satin nickel	S	S
<b>Fascias</b> – front and rear with two-tone appearance	S	S
<b>Fog lights</b>	–	O
<b>Glass</b> – Solar-Ray, deep-tinted behind front doors	S	S
<b>Mirrors</b> – folding, power remote control, black	S	–
<b>Mirrors</b> – folding, power remote control, satin nickel	–	S
<b>Mouldings</b> – lower rocker, body-colour	S	S
<b>Roof rack</b> – roof-mounted, includes side rails only	–	O
<b>Sunroof</b> – power, sliding glass panel	O	O
<b>Tires</b> – P215/55R16 all-season touring	S	S
<b>Wheels</b> – 16" x 6.5" steel, bolt-on wheel covers (A) <sup>7</sup>	S	–
<b>Wheels</b> – 16" x 6.5" machine-faced aluminum (B) <sup>7</sup>	–	S
<b>Wheels</b> – 17" X 6.5" high-polished forged aluminum (D) <sup>7</sup>	–	O <sup>8</sup>
<b>Windshield wipers</b> – 2-speed with variable delay (intermittent)	S	S
<b>Wiper/washer</b> – rear-window	S	S

1 – Requires available anti-lock braking system (ABS) or OnStar.

2 – Includes interior electrochromic auto-dimming rear-view mirror with dual reading lights.

3 – Requires front and rear side head curtain air bags and up-level sound system.

4 – Included when available 4-speed automatic transmission and anti-lock braking system (ABS) are both specified.

5 – Includes Enhanced Traction System (ETS) when available anti-lock braking system (ABS) is specified.

6 – Requires available 4-speed automatic transmission.

7 – Wheels shown on page 18.

8 – Requires Preferred Equipment Group 1SB.

9 – Requires up-level sound system.

INTERIOR	LS	LT
<b>Air conditioning</b>	S	S
<b>Air filtration system</b> – pollen filter	S	S
<b>Auxiliary power outlet</b>	S	S
<b>Cargo convenience net</b>	S	S
<b>Console</b> – front floor, dual front and single rear console cupholders	S	S
<b>Cruise control</b> – electronic with resume, coast and decelerate/accelerate features	S	S
<b>Defogger</b> – electric rear-window	S	S
<b>Floor mats</b> – front and rear, carpeted	S	S
<b>Hatch</b> – release, power remote	S	S
<b>Heat ducts</b> – rear seat, floor	S	S
<b>Instrumentation</b> – analogue cluster (includes speedometer, tachometer, coolant temperature, fuel gauge and low coolant indicator)	S	S
<b>Instrumentation</b> – Driver Information Centre (includes 2 trip odometers, average speed, fuel range, fuel economy, GM Oil Life System, exterior temperature display and programmable features)	S	S
<b>Lights</b> – dome, delayed entry/exit with ignition key removal and theatre dimming	S	S
<b>Mirror</b> – electrochromic auto-dimming with dual reading lights	–	O
<b>Smoker's Package</b> – includes ashtray and lighter	S	S
<b>Steering column</b> – tilt adjustable	S	S
<b>Steering wheel</b> – 3-spoke with cruise and Driver Information Centre controls	S	S
<b>Steering wheel</b> – leather-wrapped with sound system, cruise and Driver Information Centre controls and leather-wrapped shifter	–	O
<b>Storage compartment</b> – concealed, upper instrument panel	S	S
<b>Sunshades</b> – LH and RH covered; vanity mirrors	S	S
<b>Windows</b> – power, driver's express-down feature and passenger lock-out features	S	S

SEATS	LS	LT
<b>Cloth reclining front bucket seats</b> with vertical adjusting head restraints and driver's seatback storage pocket	S	S
<b>Reclining front bucket seats</b> with heated leather seating surfaces, vertical adjusting head restraints, driver's seatback storage pockets, leather-wrapped steering wheel and shifter	–	O
<b>Manual driver-seat height adjuster</b>	S	–
<b>Power 6-way driver adjuster</b> with power lumbar adjuster	–	S
<b>Flat-folding</b> – front-passenger seatback	S	S
<b>Seatback</b> – rear, 60/40 split-folding	S	S

SOUND SYSTEMS	LS	LT
All HHR sound systems include an electronically tuned AM/FM stereo with seek, scan, auxiliary input jack and digital clock		
AM/FM stereo with CD player	S	–
AM/FM stereo with CD player, MP3 playback, auto tone control, speed-compensated volume control, Radio Data System (RDS) and Theftlock	O	S
AM/FM stereo with 6-disc in-dash CD changer, MP3 playback, auto tone control, speed-compensated volume control, Radio Data System (RDS) and Theftlock	O	O
6-speaker sound system	S	S
7-speaker Premium Pioneer sound system with 260-watt amplifier and 10-inch rear subwoofer <sup>9</sup>	O	O

S – Standard. O – Optional individually or in combination with other optional equipment.

## PREFERRED EQUIPMENT GROUP

LT  
1SB

<b>Bright Chrome Exterior Appearance Package</b> – includes bright chrome grille, door handles, liftgate brow and mirror skull caps	•
<b>Brakes</b> – 4-wheel anti-lock braking system (ABS)	•
<b>Fog lights</b>	•
<b>Sound system</b> – 7-speaker Premium Pioneer sound system with 260-watt amplifier and 10-inch rear subwoofer	•
<b>Steering wheel</b> – leather-wrapped with sound system, cruise and Driver Information Centre controls and leather-wrapped shifter	•
<b>Suspension</b> – includes Sport suspension with gas charged struts, 17" x 6.5" painted aluminum wheels (C) and P215/50R17 all-season tires	•

## A WORD ABOUT THIS BROCHURE

Some of the equipment shown or described throughout this brochure may be available at extra cost. We have tried to make this brochure comprehensive and factual. We reserve the right, however, to make changes at any time, without notice, in prices, colours, materials, equipment, specifications, models and availability. Specifications, dimensions, measurements, ratings and other numbers in this brochure and other printed materials provided at the dealership or affixed to vehicles are approximates based upon design and engineering drawings and prototypes and laboratory tests. Your vehicle may differ due to variations in manufacture and equipment. Since some information may have been adapted since the time of the printing, please check with your Chevrolet dealer for complete details. General Motors of Canada Limited reserves the right to lengthen or shorten the model year for any product, for any reason, or to start and end model years at different times.

## PRIVACY STATEMENT

At General Motors of Canada Limited ("GM Canada") we respect your privacy and value our relationship with you. Your personal information will be protected, will never be sold, and will be used only by GM Canada, our affiliates, dealers/retailers, and service suppliers (only to provide services). If you wish to be removed from GM Canada marketing communications; would like to limit only certain marketing communications from us; would like a listing of our specific uses or further information about those with whom your information is shared; or for further information about our Privacy Policy and practices, please contact us at 1-800-GM-DRIVE (1-800-463-7483) or through our Web site at gmcanada.com

## A WORD ABOUT ASSEMBLY

Chevrolets are equipped with engines and components produced and assembled by different operating units of General Motors, its subsidiaries and suppliers and these engines and components may change or be obtained from different sources from time to time. All such engines and components are approved for use in Chevrolets. Certain equipment ordered may be unavailable at the time of assembly and we suggest that you verify that your vehicle includes the equipment you ordered, or if there are changes, that they are acceptable to you.

## TRADEMARKS

The marks appearing in this Chevrolet HHR brochure including, but not limited to: General Motors, GM, the GM Canada emblem, the GM Canada Web site address, the GM Accessories logo, Chevrolet, Chevy, the Chevrolet emblem, Aveo, Cobalt, Corvette, Epica, HHR, Impala, Malibu, Malibu Maxx, Monte Carlo, Optra, Uplander, and their respective logos, emblems, slogans and vehicle model names and body designs; and other marks such as Solar-Ray, SMARTLEASE and TOTAL Warranty are trademarks of General Motors Corporation and/or General Motors of Canada Limited, its subsidiaries, affiliates or licensors.

GMAC is a registered trademark of the General Motors Acceptance Corporation.

OnStar, the OnStar logo and the OnStar button are registered trademarks of the OnStar Corporation.

TheftLock is a registered trademark of Delphi Automotive Systems.

Radio Data System (RDS) is a registered trademark of the U.S. National Association of Broadcasters.

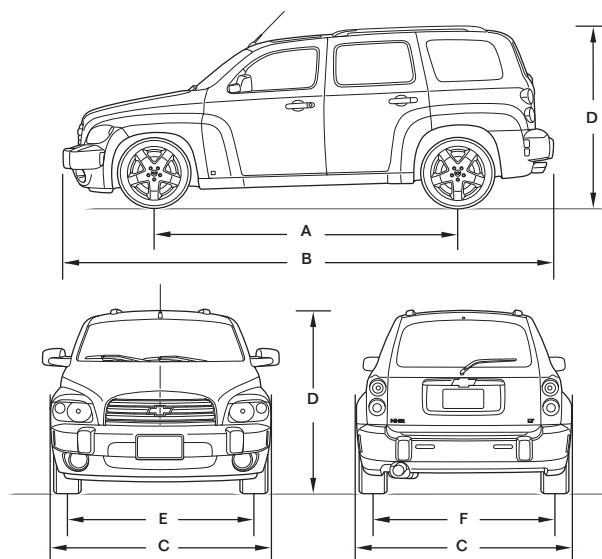
Pioneer is a registered trademark of Pioneer Electronics Inc.

## COPYRIGHT

©Copyright 2005 General Motors of Canada Limited. All Rights Reserved. All text, images, graphics, and other materials in this Chevrolet HHR brochure are subject to the copyright and other intellectual property rights of General Motors Corporation and/or General Motors of Canada Limited. These materials may not be reproduced, distributed or modified without the express written permission of General Motors Corporation and/or General Motors of Canada Limited.

Printed in Canada, August 2005.

## DIMENSIONS



## EXTERIOR, mm (in.)

Wheelbase (A)	2692 (103.5)
Length (B)	4475 (176.2)
Width (C)	1755 (69.1)
Height (D)	1603 (63.1)
Front tread (E)	1491 (58.7)
Rear tread (F)	1491 (58.7)

## INTERIOR, mm (in.) front/rear

Headroom	1006/991 (39.6/39.0)
Legroom	1031/1003 (40.6/39.5)
Shoulder room	1359/1339 (53.5/52.7)
Hip room	1273/1266 (50.1/49.8)

## CAPACITIES/WEIGHT

Cargo, L (cu. ft.) – rear seats up	674 (23.8)
– rear seats down	1574 (55.6)
Fuel tank, L (imp. gal.)	65 (14.3)
Curb weight (est.), kg. (lb.) – LS	1396 (3070)
– LT	1428 (3142)

## TOWING

2.2L ECOTEC L4	454 kg (1000 lb.) maximum gross trailer weight*
2.4L ECOTEC L4 VVT	454 kg (1000 lb.) maximum gross trailer weight*

\*When properly equipped, includes weight of trailer, cargo, passengers and equipment. All towing recommendations are subject to change. Trailer tongue load should be 10% of the maximum trailer weight but should not exceed the load rating specified for that vehicle, engine or hitch combinations. See your dealer or refer to the HHR Owner's Manual for details.

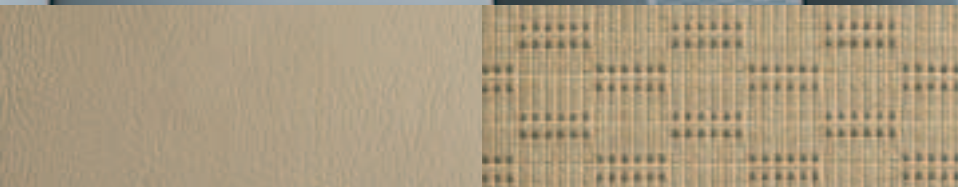


## INTERIOR FABRICS



Leather Seat  
142 – Gray

Cloth Seat  
14B – Gray



Leather 322 – Cashmere

Cloth 32B – Cashmere

## WHEELS



D – 17" high-polished forged  
aluminum wheel



C – 17" painted  
aluminum wheel



B – 16" machine-faced  
aluminum wheel



A – 16" bolt-on wheel cover

# COLOURS, FABRICS & WHEELS

### EXTERIOR/INTERIOR COLOUR COMPATIBILITY

▼ EXTERIOR	INTERIOR ►	14 – GRAY	32 – CASHMERE
15 – SANDSTONE METALLIC		•	•
41 – BLACK		•	•
42 – DARK SILVER METALLIC		•	
50 – SUMMIT WHITE		•	•
56 – SUNBURST ORANGE METALLIC		•	•
63 – SPORT RED METALLIC		•	•
67 – SILVERSTONE METALLIC		•	
69 – DAYTONA BLUE METALLIC		•	•
84 – MAJESTIC AMETHYST METALLIC		•	

Colours may not be exactly as illustrated due to restrictions of the printing process. Please see your Sales Consultant for specific colour and model availability and compatibility.

15 – Sandstone Metallic



50 – Summit White



63 – Sport Red Metallic



42 – Dark Silver Metallic

69 – Daytona Blue Metallic



56 – Sunburst Orange Metallic



67 – Silverstone Metallic



84 – Majestic Amethyst Metallic

41 – Black







AVEO

## A STORY ONLY GENERAL MOTORS CAN TELL.

General Motors' commitment to setting the highest standards in quality, safety, innovation, and fuel efficiency are matched by an equally strong commitment to the community.



OPTRA

### DID YOU KNOW?

**QUALITY:** GM plants swept the J.D. Power Initial Quality Study<sup>SM\*</sup> rankings for North and South America: Gold and Silver Plant Quality Awards for the Canadian Oshawa #2 and #1 car plants, in addition to the Bronze Plant Quality Award for the Hamtramck, Michigan plant.



COBALT

**SAFETY:** General Motors is the only automotive manufacturer committed to offering a full range of cars, trucks, and SUVs that provide safety protection before, during and after a collision. GM vehicles are equipped with a range of features and technologies that help drivers avoid collisions, reduce the risk of injury should a collision prove unavoidable, and help you get the assistance you need after a collision.



EPICA

**INNOVATION:** GM is at the forefront of automotive technology with breakthrough features such as OnStar and XM Satellite Radio.

**FUEL EFFICIENCY:** GM offers more cars than any other automaker in Canada that get better than 7.0 L/100 km in highway driving. GM has also won more EnerGuide fuel-efficiency awards than any other car company.



MALIBU &  
MALIBU MAXX

### GM IS COMMITTED TO CANADA.

**INVESTMENT:** GM invests more in Canada than any other car company: The \$2.5 billion Beacon Project represents the largest automotive investment in Canadian history.

**EMPLOYMENT:** GM directly employs over 20,000 people in Canada – more than any other car company.

**DESIGN:** GM is the only car company that designs, engineers and builds cars in Canada.



IMPALA

### GM IS BEHIND YOU AND YOUR VEHICLE.

GM is equally comprehensive in the way it backs its Chevrolet vehicles. All Chevrolet models include:

- 3-year/60,000 km\*\* complete vehicle repair coverage
- 6-year/160,000 km\*\* corrosion perforation coverage
- 8-year/130,000 km\*\* coverage on catalytic converters and powertrain control modules (PCMs)
- 3-year/60,000 km\*\* 24-hour Roadside Assistance.



MONTE CARLO

\*General Motors Corporation – Oshawa #2 (Ontario – Car) was the highest ranked plant, Oshawa #1 (Ontario) was the second ranked plant and Hamtramck, MI was the third ranked plant in North/South America among plants producing vehicles for the U.S. market in J.D. Power and Associates 2005 U.S. Initial Quality Study<sup>SM</sup>. Study based on a total of 62,251 U.S. consumer responses indicating owner reported problems during the first 90 days of ownership. [www.jdpower.com](http://www.jdpower.com)  
\*\*Whichever comes first.



HHR



Canada



UPLANDER

CHEVROLET PONTIAC BUICK GMC CADILLAC SATURN SAAB HUMMER



CORVETTE

CHEVROLET FOR ALL LIFE'S ROADS

**CENTURY**  
**AUTO.CA** [gmcanada.com](http://gmcanada.com)

