

ALL-NEW SILVERADO 2019

CHEVROLET



THE STRONGEST, MOST ADVANCED SILVERADO EVER.



Silverado 1500 Crew Cab Standard Box Custom
in Summit White with available dealer-installed
Black Assist Steps from Chevrolet Accessories.



Silverado 1500 Crew Cab Short Box LT Trail Boss 4x4
in Red Hot with available dealer-installed Off-Road
Assist Steps from Chevrolet Accessories.



Silverado 1500 Crew Cab Short Box LTZ 4x4 in Silver Ice Metallic with available features and Z71 Off-Road Package.

THE NEXT GENERATION OF STRONG STARTS HERE.

Chevy put over 100 years of pickup truck know-how into the All-New Silverado. For the contractors and cowboys. The go-to guys and weekend warriors. Those with a will-do attitude who know a strong truck is the most important tool in their belt.

For them, for you and for everyone else, Silverado offers eight trim levels with bold styling and distinct personalities. There are six engines designed with Chevy truck power and reliability. We added the most functional bed of any pickup and smart, purposeful technology to deliver towing confidence every day. Plus one thing no one else can say: It's built on the legacy of the most dependable, longest-lasting full-size pickups on the road!



WT

THE WORK TRUCK. AND A WORKHORSE.

CHEVROLET GRAPHIC GRILLE AND TAILGATE

BLACKED-OUT GRILLE, BUMPERS AND TRIM

4.3L ECOTEC3 V6 ENGINE WITH
ACTIVE FUEL MANAGEMENT™

12 CARGO TIE-DOWNS

DURABLE VINYL OR AVAILABLE CLOTH SEATING

7-INCH DIAGONAL COLOR TOUCH-SCREEN DISPLAY

CUSTOM

HIGH STYLE PLUS UNCOMMON VALUE.

BODY-COLOR CENTER GRILLE BAR AND BUMPERS

SIGNATURE LED TAILLAMPS

20-INCH BRIGHT SILVER-PAINTED ALUMINUM WHEELS

OUTSIDE HEATED POWER-ADJUSTABLE MIRRORS

AVAILABLE 5.3L ECOTEC3 V8 ENGINE AND
DUAL-OUTLET EXHAUST WITH POLISHED TIPS



CUSTOM TRAIL BOSS

**OFF-ROAD ABILITY. ON-POINT
AFFORDABILITY.**

2-INCH FACTORY-LIFTED SUSPENSION

Z71 OFF-ROAD PACKAGE WITH AUTOMATIC LOCKING
REAR DIFFERENTIAL, MONOTUBE RANCHO® SHOCKS,
HILL DESCENT CONTROL AND MORE

Z71 BADGING ON GRILLE AND FRONT FENDERS

18-INCH BLACK-PAINTED ALUMINUM WHEELS AND
GOODYEAR WRANGLER DURATRAC® OFF-ROAD TIRES



LT

ICONIC LOOKS. CLASSIC CAPABILITY.

CHROME CENTER GRILLE BAR, BUMPERS AND
MIRROR CAPS

BODY-COLOR DOOR HANDLES

LED HEADLAMPS AND LED SIGNATURE DAYTIME
RUNNING LAMPS

EZ LIFT TAILGATE

8-INCH DIAGONAL COLOR TOUCH-SCREEN DISPLAY



RST

**EQUAL PARTS PERFORMANCE
AND APPEARANCE.**

BLACK CHEVROLET BOWTIE EMBLEMS

BODY-COLOR CENTER GRILLE BAR, BUMPERS
AND DOOR HANDLES

LED HEADLAMPS, TAILLAMPS, FOGLAMPS AND
CARGO AREA LIGHTING

EZ LIFT POWER LOCK AND RELEASE TAILGATE

KEYLESS OPEN AND START



LT TRAIL BOSS

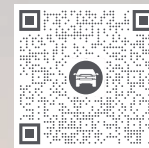
**READY FOR THE TRAIL. OR A NIGHT
DOWNTOWN.**

ALL THE FEATURES OF CUSTOM TRAIL BOSS,
INCLUDING A 2-INCH FACTORY-LIFTED SUSPENSION
AND Z71 OFF-ROAD PACKAGE

LED HEADLAMPS, TAILLAMPS, FOGLAMPS AND
CARGO AREA LIGHTING

BLACK CENTER GRILLE BAR, BOWTIE EMBLEMS,
BUMPERS AND MIRROR CAPS

5.3L ECOTEC3 V8 ENGINE WITH DYNAMIC FUEL
MANAGEMENT AND DUAL-OUTLET EXHAUST



**SCAN TO LEARN MORE
ABOUT SILVERADO
PERSONALITY**



LTZ

PREMIUM FEATURES. INSIDE AND OUT.

CHROME GRILLE WITH CHROME CENTER BAR AND
CHROME BUMPERS, MIRROR CAPS, DOOR HANDLES
AND BELTLINE ACCENTS

18-INCH BRIGHT SILVER-PAINTED ALUMINUM WHEELS

OUTSIDE HEATED POWER-FOLDING MIRRORS

ADVANCED TRAILERING FEATURES

PERFORATED LEATHER-APPOINTED SEATING

HEATED STEERING WHEEL



HIGH COUNTRY

THE BEST OF SILVERADO. TAKEN EVEN HIGHER.

EXCLUSIVE GRILLE AND CENTER GRILLE BAR
WITH TWO-TONE BRONZE AND CHROME FINISH

HIGH-INTENSITY LED HEADLAMPS

20-INCH MACHINED-FACE ALUMINUM WHEELS

INDUSTRY-FIRST POWER-UP/-DOWN TAILGATE

CHROME WHEEL-TO-WHEEL ASSIST STEPS

HEATED AND VENTILATED PERFORATED LEATHER-
APPOINTED FRONT BUCKET SEATS

OUR MOST ADVANCED TRUCK REQUIRED OUR MOST ADVANCED THINKING.

MULTI-MATERIAL STRATEGY. The mission was clear: Use the right material in the right place to do the right job. That means high-strength steel in the frame, bed and safety cage. It means strong, lightweight aluminum in the doors, hood and tailgate. It means we selected the perfect material for every application, then optimized it for durability, safety, mass and function.

FULLY BOXED LADDER-TYPE FRAME.

The all-new frame is 88 pounds lighter than its predecessor, but remarkably has 10% greater torsional rigidity. As much as 80% of the frame is made of high-strength steel varying from 2 mm to 5 mm in thickness, and every millimeter is optimized for performance, strength and stiffness.

WEIGHT REDUCTIONS. The 2019 Silverado has a longer wheelbase, a wider and taller stance, and more cargo volume, yet is up to 450 pounds lighter than the previous generation. Our engineers looked at every ounce to bring out the best in efficiency, ride and handling without compromising durability and capability.

A SMOOTH SUSPENSION. We've taken our legendary smooth ride up another notch. The new independent short/long arm front suspension provides excellent wheel alignment, ride comfort and tunability with reduced weight. The live axle rear suspension includes 2-stage, semi-elliptic multileaf springs to strike a balance between payload management and ride quality. LT with the available 5.3L EcoTec3 V8 engine includes composite second-stage leaf springs that are durable and lightweight.

TWO TRANSFER CASES. The All-New Silverado offers a choice of transfer cases for 4x4 models. The 2-speed transfer case features Auto, 2 High, 4 High and 4 Low settings and is standard on Custom Trail Boss, LT Trail Boss and High Country. It's included with the Z71 Off-Road Package on other models. The single-speed transfer case, standard on Work Truck, Custom, LT, RST and LTZ 4x4 models, offers Auto, 2 High and 4 High. It also includes a Drive Mode Selector with Terrain mode, designed to optimize low-speed off-road driving much the same way 4 Low does with the 2-speed transfer case.



DRIVE MODE SELECTOR. This available feature allows you to choose different drive modes, based on the vehicle's equipment, that alter the transmission shifts, throttle and traction systems to better handle varying road conditions. Tour is for everyday driving; Sport increases responsiveness; Tow/Haul aids in trailering; Snow is helpful in slippery conditions; Terrain is included with the single-speed transfer case and optimizes low-speed driving over rough terrain; and Off-Road helps Silverado take on the rough stuff.

BRAKE ENHANCEMENTS. An electro-hydraulic boost or "e-boost" system produces on-demand power for smooth, reliable, consistent braking whether the truck is loaded, unloaded or hauling a heavy trailer. In addition, the Duralife® coating helps increase rotor life.

ELECTRIC POWER STEERING SYSTEM.

To optimize the steering feel and the turning radius of the Next-Generation Silverado, the size of the Electric Power Steering motor was increased to develop higher output. This system is also very efficient and highly tunable, providing consistent road feel.

EXTERIOR DESIGN



ALL-NEW LOOKS. STILL 100% SILVERADO.

With its bold proportions and broad-shouldered appeal, the Next-Generation Silverado owns the road. A longer wheelbase and wide, muscular stance provide a powerful base. It's also one inch taller than before, giving you a more commanding view of the road. While the chiseled hood and striking horizontal elements let you know these trucks share the Chevy truck bloodline, each of the eight trims has its own personality, with distinct grilles, front fascias and all-new wheel designs.

AERODYNAMICS IN ACTION. Functional front fascia air curtains allow air to flow through inlets, collect in the front wheel openings and flow out — a design that produced about 15 counts of drag reduction. Aero shutters behind the grille close when the engine does not need the constant flow of air for cooling to also help reduce drag. A front air dam, an integrated spoiler on the back of the cab and the tailgate shelf work together to optimize airflow. All that is important, because while Silverado is larger in almost every way, it's also the most aerodynamic full-size pickup in Chevrolet history.

WIND TUNNEL WARRIOR. To help the All-New Silverado achieve a .38 drag coefficient and a 7.5% improvement in aerodynamics, Chevrolet engineers spent over 500 hours in the wind tunnel, testing airflow around the vehicle.

LET'S TALK ABOUT TIRES.

Every Silverado features low rolling resistance tires. Advanced technology will allow select 20- and 22-inch tires to achieve a better than 15% improvement in efficiency over the previous generation while still producing the ride and traction you expect.

LIGHT 'EM UP. LED headlamps, standard on LT models and above, are effective and efficient, require less energy output and are housed in a more narrow space than ever before. LED technology also allowed designers to create shapes that complement the contours of the grille.

Silverado 1500 Crew Cab Short Box
RST 4x4 in Northsky Blue Metallic
with available dealer-installed
Chevrolet Accessories.

DURABED

THE MOST FUNCTIONAL BED OF ANY PICKUP.

THE HARDEST WORKING BED IN THE BUSINESS. The Durabed in the All-New Silverado features a high-strength roll-formed steel floor that's stronger, lighter and more durable than a traditional stamped steel floor. And while the bed floor is thinner and lighter than ever before, it's also more puncture- and dent-resistant. Plus, it's longer, deeper and wider than the previous generation, with 12 standard tie-downs, nine more available removable tie-downs from Chevrolet Accessories, and a larger CornerStep rear bumper.

MORE CARGO BOX VOLUME THAN ANY COMPETITOR. A new multi-piece manufacturing process reduces wasted space and increases the maximum width of the bed floor by nearly seven inches. You'll also notice the bed is taller. The result? Greater cargo box volume than any competitor offers, regardless of bed length, including 89.1 cubic feet on Long Box. In fact, our Short Box offers 20% more volume than the Ford F-150 Short Box, and even has more space than their Standard Box. The working end of Silverado continues to work harder for you.



**12 TIE-DOWNS
STANDARD
+ 9 ACCESSORY
TIE-DOWNS
AVAILABLE**

6.75 IN. WIDER



1. POWER-UP/-DOWN TAILGATE.

This industry-first Chevrolet-exclusive feature lets you easily raise or lower the tailgate using the key fob, a button in the cabin or a touchpad on the gate itself. Standard on Silverado High Country and available on LTZ.

2. CORNERSTEP REAR BUMPER.

Every Silverado features larger-than-ever corner steps with nonslip treads to accommodate work boots. Pocket hand grips built into the tops of the side rails make it easy to use the corner steps and pull yourself up toward the bed.

3. BED-MOUNTED 120-VOLT OUTLET.

Located at the rear of the bed on the passenger side, this available household-type outlet lets you power up a laptop, charge the batteries for cordless tools and more. There's also a second available 120-volt outlet on the instrument panel. These outlets have a combined limit of 400 watts.





MORE TIE-DOWNS THAN ANY COMPETITOR! Twelve tie-downs are welded into the corners of the bed to help keep cargo secure – that's three times more than any competitor. They're rated up to 500 pounds per corner in any direction – twice as much

as the previous generation – and located at different heights to more easily secure items of various shapes and sizes. Nine dealer-installed removable tie-downs rated up to 250 pounds are available from Chevrolet Accessories.

LED CARGO AREA LIGHTING. Corner pillar lamps angled toward the front of the box, combined with the cab-mounted cargo lights, offer excellent lighting coverage (standard on RST and above; available on all other trims). Hitch lighting is included with the available power-release and

power-up/-down tailgates and helps improve nighttime visibility when hooking up a trailer. Available perimeter lighting shines from the exterior mirrors, helping provide an added feeling of security.

TRAILERING

CONFIDENCE IS KEY. There's no doubt the All-New Silverado has the torque and transmissions you need to pull heavy loads. But what really separates Silverado from the competition is the peace of mind you get from integrated towing features that deliver confidence and make hauling big loads easy.

TRAILERING TECHNOLOGY. Just about everything you need to tow is found in the available Advanced Trailering Package: Hitch Guidance with Hitch View¹, hitch area lighting, industry-first electric parking brake hookup assist, integrated trailer brake controller, trailer theft alert, in-vehicle Advanced Trailering System with a phone companion app and more.

INDUSTRY-FIRST TRAILERING LABEL. This small label has a big job. Located on the driver-side door jamb, it provides information that's specific to your vehicle and vital to towing, including GVWR², GCWR³, GAWR⁴ for the rear axle, maximum payload, maximum tongue weight and curb weight.

PROVEN TRAILERING FEATURES. Over the years we've built a dependable lineup of trailering features that are hard to beat. A long day of towing gets a lot easier when you have features like Tow/Haul mode, Trailer Sway Control, Hill Start Assist and auto grade braking on your side.

Silverado 1500 Crew Cab
Short Box High Country 4x4
in Iridescent Pearl Tricoat
(extra-cost color) with
available features.



¹ Read the vehicle Owner's Manual for important feature limitations and information. ² Maximum Gross Vehicle Weight Rating (GVWR). When properly equipped; includes weight of vehicle, passengers, cargo and equipment. ³ Gross Combination Weight Rating. ⁴ Gross Axle Weight Rating.



¹ Safety or driver assistance features are no substitute for the driver's responsibility to operate the vehicle in a safe manner. The driver should remain attentive to traffic, surroundings and road conditions at all times. Visibility, weather and road conditions may affect feature performance. Read the vehicle Owner's Manual for important feature limitations and information. ² OnStar plan, working electrical system, cell service and GPS signal required. Stolen Vehicle Assistance requires armed factory-installed theft-deterrent system.

HITCH GUIDANCE WITH HITCH VIEW.¹

A dynamic guiding line is integrated onto the image when you select Hitch Guidance on the Rear Vision Camera¹ screen. As an enhancement, available Hitch View allows you to zoom in on the hitch for a top-down view, making it easier to hook up your trailer on your own.

INDUSTRY-FIRST ELECTRIC PARKING

BRAKE HOOKUP ASSIST. This feature automatically engages the parking brake when you shift into Park after you engage available Hitch View, eliminating any unintentional roll so your trailer and hitch stay in alignment.

INDUSTRY-FIRST TRAILER THEFT ALERT.

With this available feature, if the harness on your attached trailer is disconnected, the lights will flash and the horn will sound. In addition, if you have an active OnStar Safety & Security Plan² and set up Theft Alarm Notification preferences, you can receive a notification by phone, text or email.

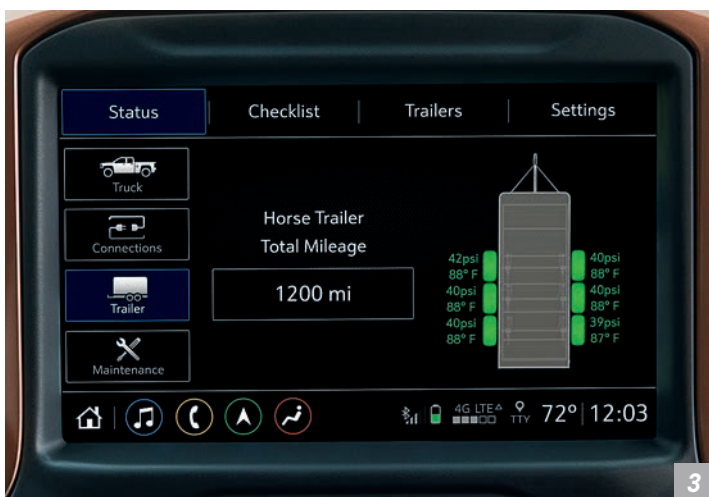
HD SURROUND VISION! This available technology can help make hitching a trailer easier. Using four strategically placed cameras, HD Surround Vision creates a virtual bird's-eye view of the areas immediately surrounding your Silverado during low-speed maneuvering.



1



2



3



4

¹ Device data connection required. Available on select Apple and Android devices. Some features require active service plan and working electrical system. Service availability, features and functionality vary by vehicle. ² Does not monitor spare tire.

1. TRAILERING CAMERA PACKAGE.

This available system integrates cameras into the side view mirrors to help eliminate blind spots and make it easier to line up your trailer and hitch. An available high-resolution auxiliary accessory camera can be mounted on the rear of a trailer for enhanced rearward visibility. Dealer installation required.

2. myChevrolet APP WITH TRAILERING.

This industry-first mobile app¹ includes predeparture checklists, a glossary of trailering terms, how-to videos, trailer light tests and more.

3. TRAILER TIRE PRESSURE MONITORING SYSTEM.

When you install the sensors, this available feature checks trailer tires for proper inflation and temperature?

4. AVAILABLE INTEGRATED TRAILER BRAKE CONTROLLER.

Utilize your trailer brakes with this feature. The level of brake force or "gain" is displayed in the Driver Information Center. You'll also have confidence knowing the system can pulse the trailer's brakes when braking on snow or ice and that it monitors the trailer brake circuit for wiring issues. Additionally, brake gain settings can be stored in the trailer profiles in the Advanced Trailering System.

STRENGTH IN NUMBERS: SILVERADO PROVIDES THE PERFECT POWERTRAIN.

THE POWER OF CHOICE. The truth is, you don't just want a truck. You want a truck that's right for you. That's why Silverado offers so many powertrain choices. And each delivers a unique blend of performance and efficiency. Our lineup is anchored by the proven EcoTec3 small block 4.3L V6, plus two versions of the 5.3L V8, and the 6.2L V8 that offers best-in-class V8 horsepower

and torque! There's also the Duramax® 3.0L Turbo-Diesel that will be available Summer 2019. And finally, the high-output 2.7L Turbo that will take Silverado from 0 to 60 in 6.8 seconds. These six different engines designed for trucks share two things in common: Chevy DNA and the promise of bringing you the best driving truck we have ever built.

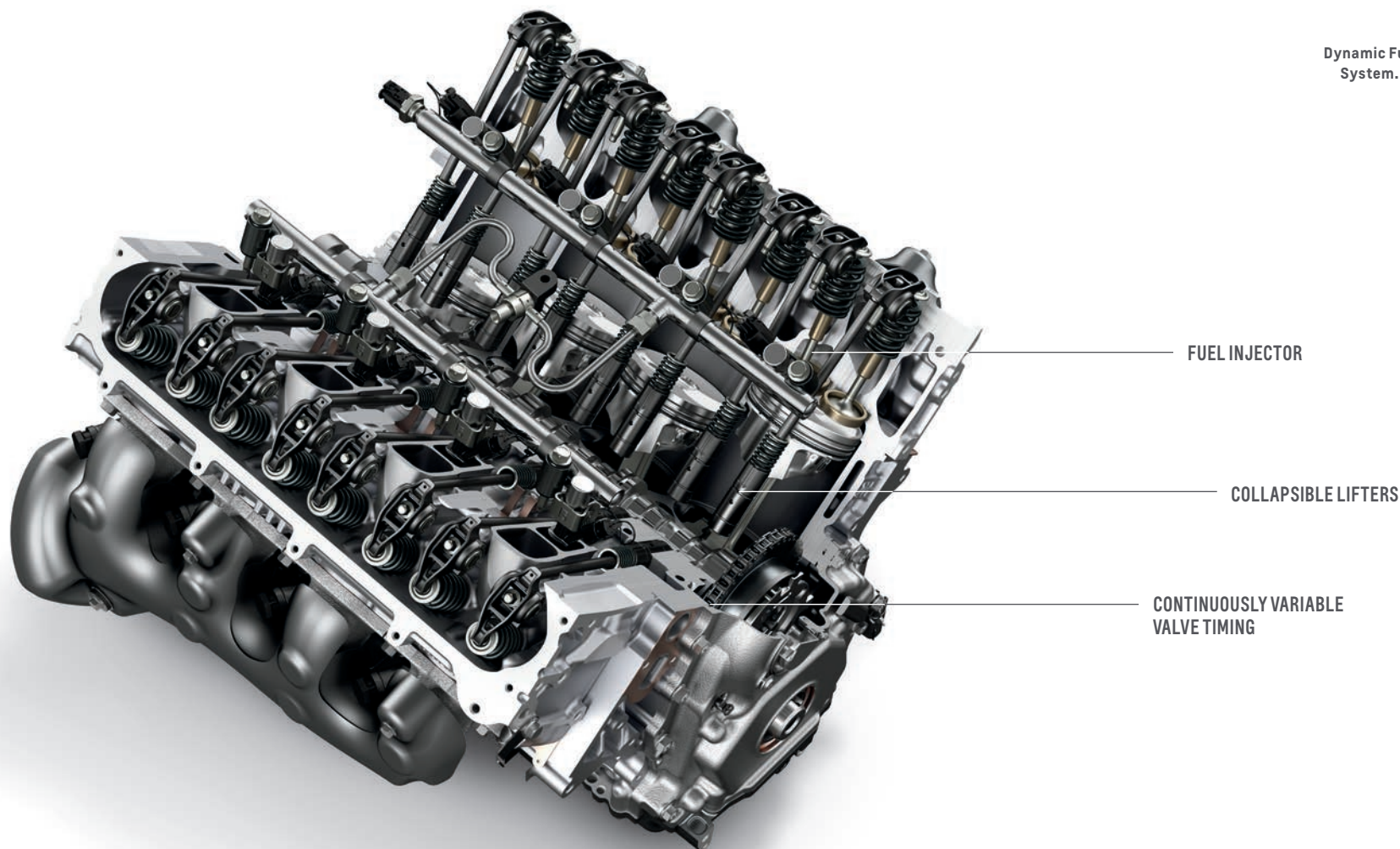
SMOOTH-SHIFTING TRANSMISSIONS. Included with the available Duramax 3.0L Turbo-Diesel and 6.2L EcoTec3 V8, a highly efficient 10-speed automatic transmission provides impressive refinement and performance, including enhanced acceleration and torque delivery while towing. An 8-speed transmission, which originally debuted on the Corvette Stingray, is paired with the 2.7L Turbo and 5.3L V8 with Dynamic Fuel Management (DFM). A proven, reliable 6-speed comes with the 4.3L V6 and 5.3L V8 with Active Fuel Management (AFM).

AUTO STOP/START TECHNOLOGY. Included on the 2.7L Turbo, the 5.3L V8 with 8-speed transmission, the 6.2L V8 and the Duramax 3.0L Turbo-Diesel, this feature is a model of efficiency. When you come to a complete stop, under certain conditions, the engine shuts off to save fuel and restarts instantly when the brake is released. Intelligently designed for pickup applications, auto stop/start can be deactivated when conditions are not ideal, like when you're trailering or heading off-road in 4-wheel drive.

2.7L TURBO	3.0L TURBO-DIESEL I-6 ²	4.3L ECOTEC3 V6	5.3L ECOTEC3 V8	5.3L ECOTEC3 V8	6.2L ECOTEC3 V8
8-SPEED TRANSMISSION	10-SPEED TRANSMISSION	6-SPEED TRANSMISSION	6-SPEED TRANSMISSION	8-SPEED TRANSMISSION	10-SPEED TRANSMISSION
ACTIVE FUEL MANAGEMENT	DIESEL EXHAUST BRAKE SYSTEM	ACTIVE FUEL MANAGEMENT	ACTIVE FUEL MANAGEMENT	DYNAMIC FUEL MANAGEMENT	DYNAMIC FUEL MANAGEMENT
310 HP @ 5600 RPM	NOT YET AVAILABLE	285 HP @ 5300 RPM	355 HP @ 5600 RPM	355 HP @ 5600 RPM	420 HP @ 5600 RPM
348 LB.-FT. TORQUE @ 1500 RPM	NOT YET AVAILABLE	305 LB.-FT. TORQUE @ 3900 RPM	383 LB.-FT. TORQUE @ 4100 RPM	383 LB.-FT. TORQUE @ 4100 RPM	460 LB.-FT. TORQUE @ 4100 RPM
7,000 LBS. MAX TOWING CAPABILITY ^{3,4}	NOT YET AVAILABLE	7,900 LBS. MAX TOWING CAPABILITY ^{3,5}	10,100 LBS. MAX TOWING CAPABILITY ^{3,5}	11,600 LBS. MAX TOWING CAPABILITY ^{3,6}	12,200 LBS. MAX TOWING CAPABILITY ^{3,7}
20 MPG CITY/ 23 HIGHWAY ⁸	NOT YET AVAILABLE	16 MPG CITY/ 21 HIGHWAY ⁹	15 MPG CITY/ 21 HIGHWAY ⁹	17 MPG CITY/ 23 HIGHWAY ¹⁰	16 MPG CITY/ 20 HIGHWAY ¹¹

¹ Class is Half-Ton Pickup segment. ² Available Summer 2019. ³ Before you buy a vehicle or use it for trailering, carefully review the Trailering section of the Owner's Manual. The weight of passengers, cargo and options or accessories may reduce the amount you can tow. ⁴ Requires Silverado 1500 Double Cab 2WD. ⁵ Requires Silverado 1500 Regular Cab Long Box 2WD. ⁶ Requires Silverado 1500 Double Cab Standard Box 2WD or Crew Cab Short Box 2WD with available Max Trailering Package. ⁷ Requires Silverado 1500 Double Cab Standard Box LTZ 4x4 with available Max Trailering Package. ⁸ EPA-estimated (2WD). EPA-estimated 19 MPG city/22 highway (4x4). ⁹ EPA-estimated (2WD). EPA-estimated 15 MPG city/20 highway (4x4), 14 MPG city/18 highway Trail Boss (4x4). ¹⁰ EPA-estimated (2WD). EPA-estimated 16 MPG city/22 highway (4x4), 15 MPG city/20 highway Trail Boss (4x4). ¹¹ EPA-estimated (4x4).

Dynamic Fuel Management (DFM)
System. 6.2L V8 engine shown.



DYNAMIC FUEL MANAGEMENT (DFM).

This new technology is included on the 5.3L EcoTec3 V8 engine with 8-speed transmission as well as the available 6.2L EcoTec3 V8. A sophisticated control system continuously monitors every movement of the accelerator pedal and calculates exactly how much torque is needed to handle the current driving

condition, from highway cruising to city traffic to hauling a heavy load. Nearly instantaneously, the engine control system will activate or deactivate cylinders in an industry-first 17 different patterns to maximize fuel economy¹ and create the power needed. And it all happens with seamless precision, so you'll never even notice.

ACTIVE FUEL MANAGEMENT (AFM).

The 2.7L Turbo, the 4.3L EcoTec3 V6 and the 5.3L EcoTec3 V8 engine with 6-speed transmission offer this system. Sensing load and demand, AFM improves efficiency by deactivating cylinders when power demands are light and reactivating cylinders when more power is required.

¹ EPA-estimated MPG city/highway: 17/23 (2WD), 16/22 (4x4), 15/20 (Trail Boss with 5.3L V8 engine), 16/20 (4x4 with 6.2L V8 engine).

ADVANCED ENGINES ARE THE RIGHT TOOLS FOR ANY JOB.



DURAMAX 3.0L TURBO-DIESEL ENGINE.

Designed from the start as a truck engine, you get the best of both worlds with this available all-new inline 6-cylinder engine. First, it's an efficient powerplant, thanks in part to a high-pressure injection strategy that allows for more precise fuel delivery for

optimal combustion. This engine is inherently balanced due to its inline configuration and features a diesel exhaust brake system that utilizes the turbocharger to create back pressure to help slow your Silverado on downhill grades. Available Summer 2019.

DIESEL DONE RIGHT. The Duramax 3.0L Turbo-Diesel includes Active Thermal Management to control temperatures across the cooling system and auto stop/start technology to enhance efficiency. A water-charged air cooler and engine oil cooler give you confidence when towing or climbing steep grades in extreme conditions.



2.7L TURBO ENGINE. Big things come in turbocharged packages. Standard on LT and RST, the all-new 2.7L Turbo engine generates 310 horsepower and 348 lb.-ft. of torque with no turbo lag and off-the-line acceleration that takes you from 0 to 60 in 6.8 seconds! Efficiency wasn't an afterthought – Active Fuel Management helps this engine offer 23 MPG² on the highway.

TURBO TECH. The 2.7L Turbo was specifically engineered to perform in the All-New Silverado and delivers peak torque at low rpm for enhanced acceleration and pulling power. To optimize power, a dual-volute turbocharger handles pressure waves at both high and low rpm. A three-step valvetrain introduces the ability to more precisely open and close the valves to meet engine demands, whether idling, accelerating or in between. And an electric wastegate helps control boost pressure to enhance durability and efficiency.

¹ Based on initial vehicle movement. ² EPA-estimated 23 MPG highway (2WD).

WT



Silverado 1500 Double Cab Standard Box
WT in Summit White with available
dealer-installed Chevrolet Accessories.

Silverado 1500 Regular Cab
Long Box WT in Summit White.



EVERY DAY IS A WORKDAY. Silverado WT lives up to the “Chevrolet” displayed on the grille and tailgate. Its work truck résumé starts with the proven power of a standard 4.3L EcoTec3 V6 engine. Or step up to the available 5.3L V8. Both offer the efficiency of Active Fuel Management. Like every Silverado, WT

features 4-wheel antilock disc brakes with Hill Start Assist, StabiliTrak® with Trailer Sway Control and the all-new Durabed. With a high-strength roll-formed steel floor, best-in-class cargo volume and 12 tie-downs, it's the most functional pickup box ever.

AN INSIDE JOB. The hardworking WT interior has durable vinyl or available cloth seats and a rubberized vinyl floor for easy cleanup. Power express-down windows are standard, as is a Rear Vision Camera¹ A Driver Information Center keeps you in the know on important vehicle functions, and the intuitive Chevrolet Infotainment 3 system²

with a 7-inch diagonal color touch-screen functions much like your smartphone. You'll also get Bluetooth®³ audio streaming for your compatible smartphone. The available WT Convenience Package adds an EZ Lift power lock and release tailgate, cruise control, heated power mirrors, Remote Keyless Entry and more.

¹ Read the vehicle Owner's Manual for important feature limitations and information. ² Chevrolet Infotainment System functionality varies by model. Full functionality requires compatible Bluetooth and smartphone, and USB connectivity for some devices. ³ Visit mychevrolet.com/learn for vehicle and smartphone compatibility.

CUSTOM

Silverado 1500 Crew Cab
Short Box Custom 4x4 in Black.

STEAL THE SPOTLIGHT. Silverado Custom turns heads with body-color bumpers and center grille bar along with deep-tinted glass, signature LED taillamps and 20-inch Bright Silver-painted aluminum wheels. Outside heated power-adjustable mirrors are standard, as is a 285-horsepower 4.3L V6 engine. The 5.3L V8 engine with Active Fuel Management and dual-outlet exhaust with polished tips is available.

A CUSTOMIZED EXPERIENCE.

The comfortable Jet Black cloth divided front bench seat and matching carpeting welcome you inside Silverado Custom. A 7-inch diagonal color touch-screen display, cruise control, Remote Keyless Entry, and power windows and door locks are all standard. The available Custom Convenience Package includes a remote vehicle starter system, LED cargo bed lighting, an EZ Lift power lock and release tailgate, a content-theft alarm system and a rear-window defogger.



LT

Silverado 1500 Crew Cab Short Box
LT 4x4 in Cajun Red Tintcoat
(extra-cost color) with available
features and Z71 Off-Road Package.

MODERN MEETS CLASSIC. Silverado LT is an all-new pickup with the essential truck appeal of chrome bumpers, center grille bar and mirror caps complemented by body-color door handles. LED headlamps and daytime running lamps add a signature look, as do available 20-inch machined-face painted-aluminum wheels. Added capability comes with the EZ Lift tailgate. The high-output 2.7L Turbo engine paired with an 8-speed automatic transmission provides the power. The 5.3L V8 with Dynamic Fuel Management and the Duramax 3.0L Turbo-Diesel engines are available (diesel available Summer 2019).

ADVANCED DEGREE. Technology takes a leap forward in Silverado LT. A Chevrolet Infotainment 3 system¹ with an 8-inch diagonal color touch-screen, a Driver Information Center with a 4.2-inch diagonal screen and two USB ports² are standard. You'll also get 3 GB or 1 month of 4G LTE data (whichever comes first) for the available built-in Wi-Fi,³ 1 month of Chevrolet Connected Services,⁴ 1 month of OnStar Safety & Security Plan coverage,⁴ and Chevrolet Connected Access⁵ with 10 years of standard connectivity, which currently includes Vehicle Diagnostics, Dealer Maintenance Notification and more.



¹ Chevrolet Infotainment System functionality varies by model. Full functionality requires compatible Bluetooth and smartphone, and USB connectivity for some devices. ² Not compatible with all devices. ³ Service varies with conditions and location. Requires active OnStar service and paid AT&T data plan. Visit onstar.com for details and limitations. ⁴ Connected Services include navigation services and Remote Access Plan, and 1 month or 3 GB of 4G LTE data (whichever comes first) from vehicle delivery date. Data plans offered by AT&T. Services are subject to User Terms and limitations. Certain services require working electrical system, cell service and GPS signal. OnStar links to emergency services. Visit onstar.com for coverage map, details and system limitations. ⁵ Standard connectivity available only to original purchaser for 10 years. Connected Access services are subject to change. Does not include emergency or security services. Diagnostic capabilities vary by model and service plan. Message and data rates may apply. Requires contact method on file and enrollment to receive alerts. Not all issues will deliver alerts. Visit onstar.com for details and limitations.

RST

STOP AND STARE. Silverado RST is street art, with body-color bumpers, center grille bar and door handles matched with high-gloss Black mirror caps. LED lighting is everywhere, including headlamps, daytime running lamps, taillamps and foglamps. RST standards include 18-inch Bright Silver-painted aluminum wheels, recovery hooks¹, Black bowtie emblems, and the EZ Lift power lock and release tailgate. Driving dynamics are accelerated by the 310 horsepower and 348 lb.-ft. of torque generated by the all-new 2.7L Turbo engine.

THE INSIDE TRACK ON RST. The RST interior experience is enhanced with Keyless Open and Start, remote vehicle starter system, a rear-window defogger and a theft-deterrent system. The 40/20/40 split-bench front seat includes an armrest and underseat storage. With the available Convenience Package, you'll upgrade to dual-zone automatic climate control, heated driver and outboard front passenger seats, a heated steering wheel and more, including rear in-seatback storage compartments on the left and right sides and underseat storage on Crew Cab models.



¹ To avoid the risk of injury, never use recovery hooks to tow a vehicle. See the Owner's Manual for more information.

Silverado 1500 Crew Cab Short Box
RST 4x4 in Black with available
Z71 Off-Road Package.

Z71 OFF-ROAD PACKAGE

Silverado 1500 Crew Cab Short Box LT 4x4 in
Cajun Red Tintcoat (extra-cost color) with
available features and Z71 Off-Road Package.



ROADS ARE FOR EVERYONE ELSE.

For 2019, the Z71 Off-Road Package is available on almost every Silverado (standard on both Trail Boss models). The available package includes off-road jounce bumpers to absorb impact and dampen noise, vibration and harshness,

twin-tube Rancho® shocks (Rancho monotube shocks on Trail Boss models), a metal underbody shield, a high-capacity air filter, an industry-first air filter monitor, all-terrain tires, and more. Plus, LT, RST and LTZ add a dual-outlet exhaust with polished tips.

TRACTION IN ACTION. A class-exclusive automatic locking rear differential reacts in milliseconds to low-traction situations for improved forward motion. It provides equal power to both rear wheels, giving you the traction to keep moving. The Autotrac 2-speed transfer case is also included in the Z71 Off-Road Package.

Z71 OFF-ROAD AND PROTECTION PACKAGE. To keep your truck protected on the trails, this available package includes wheelhouse liners, a Chevytec spray-on bedliner, and all-weather front and rear floor liners with the Z71 emblem.



TRAILERING ON THE TRAILS.

The Trailering Package, standard on both Trail Boss models plus LTZ and High Country and required on all other models when you choose the available Z71 Off-Road Package, includes a trailer

hitch and 7-pin and 4-pin connectors. Hill Descent Control uses antilock braking to automatically help provide a smooth descent on steep terrain.

Silverado 1500 Crew Cab Short Box RST 4x4
in Black with available Z71 Off-Road Package.

TRAIL BOSS

Silverado 1500 Crew Cab Short Box
Custom Trail Boss 4x4 in Summit White.



SHOW 'EM WHO'S BOSS.

The suspensions on Custom Trail Boss and LT Trail Boss have been given a 2-inch lift right from the factory to maximize approach, breakover and departure angles. That's in addition to the legendary Z71 Off-Road Package,

the 18-inch Goodyear Wrangler DuraTrac® off-road tires, Autotrac 2-speed transfer case, automatic locking rear differential and Trailering Package, giving you everything you need to leave worries, and roads, behind.

CUSTOM TRAIL BOSS. The durable 285-horsepower 4.3L EcoTec3 V6 engine helps Custom Trail Boss tame the trails. Black Chevrolet bowtie emblems, a Black grille, 18-inch Black-painted aluminum wheels and Performance Red recovery hooks¹ provide a distinctive difference from Silverado Custom.

¹ To avoid the risk of injury, never use recovery hooks to tow a vehicle. See the Owner's Manual for more information.



LT TRAIL BOSS. This is one serious off-road machine, highlighted by the 5.3L EcoTec3 V8 engine with Dynamic Fuel Management, a dual-outlet exhaust with polished tips and an auxiliary external transmission oil cooler. LED headlamps, LED cargo area lighting, and an EZ Lift power lock and release

tailgate are standard. Because comfort and convenience are important anywhere, a leather-wrapped steering wheel, remote vehicle starter system, Keyless Open and Start, and all-weather floor liners are welcome additions.

Silverado 1500 Crew Cab Short Box
LT Trail Boss 4x4 in Red Hot.

LTZ

RISE AND SHINE. Chrome takes center stage on LTZ, from the grille and bumpers to the mirror caps, door handles and beltline accents. The look is finished with 18-inch Bright Silver-painted aluminum wheels. Outside heated power-adjustable, power-folding mirrors bring everything into focus, and 12 fixed tie-downs in the bed help keep everything in place.

MECHANICAL MARVEL. When it comes to power and performance, LTZ is built to impress. The 5.3L V8 engine is standard, along with an automatic locking rear differential, Hitch Guidance with Hitch View¹ and an integrated trailer brake controller. The Advanced Trailering System provides a checklist, maintenance reminders, electrical diagnostics and more.

INTERIOR COMFORT AND CONVENIENCE. Perforated leather-appointed front and rear seating is a great place to start. Add in heated driver and front outboard passenger seats with 10-way power and driver memory, plus a heated steering wheel. The Chevrolet Infotainment 3 Plus system² with HD Radio[®], multi-touch display and advanced voice recognition is included, as is a high-definition Rear Vision Camera¹. Two front USB ports³ provide power and connectivity for your mobile devices, while two in the rear are charge-only. The 120-volt outlets in the cargo bed and on the instrument panel supply power for just about everything else.



Silverado 1500 Crew Cab Short Box
LTZ 4x4 in Silver Ice Metallic
with available features.

¹ Read the vehicle Owner's Manual for important feature limitations and information. ² Chevrolet Infotainment System functionality varies by model. Full functionality requires compatible Bluetooth and smartphone, and USB connectivity for some devices. ³ Not compatible with all devices.

HIGH COUNTRY

Silverado 1500 Crew Cab Short Box
High Country 4x4 in Havana Brown
Metallic with available features.

YOU'VE REACHED THE TOP. High Country represents the best Silverado has to offer, featuring an exclusive grille with a two-tone bronze and chrome finish, and body-color bumpers and mirror caps. 20-inch wheels and chrome door handles, recovery hooks¹ and wheel-to-wheel assist steps make a bold design statement. High-intensity LED headlamps with signature curtain LED daytime running lamps and a dual-outlet exhaust with polished tips complete the look.

ALWAYS A CHEVY TRUCK. Capability is a given with the Trailering Package, a Chevytec spray-on bedliner, a segment-exclusive automatic locking rear differential, an 8-speed automatic transmission, a power-up/-down tailgate, an integrated trailer brake controller and a 5.3L V8 engine. The 6.2L V8 with 10-speed automatic transmission is available.

"ROUGHING IT" REIMAGINED. The unique Jet Black and Umber interior elevates High Country comfort. Heated and ventilated perforated leather-appointed front bucket seats with embroidered head restraints come equipped with 10-way power adjustment. Heated rear outboard seats are standard. Enhancements include a Bose premium 7-speaker sound system, Chevrolet Infotainment 3 Premium system with Connected Navigation,² wireless charging,³ Rear Cross Traffic Alert,⁴ Lane Change Alert with Side Blind Zone Alert,⁴ and Front and Rear Park Assist.⁴



¹ To avoid the risk of injury, never use recovery hooks to tow a vehicle. See the Owner's Manual for more information. ² Chevrolet Infotainment System functionality varies by model. Full functionality requires compatible Bluetooth and smartphone, and USB connectivity for some devices. Map coverage available in the United States, Puerto Rico and Canada. ³ The system wirelessly charges one PMA- or Qi-compatible mobile device. Some devices require an adaptor or back cover. To check for phone or other device compatibility, visit my.chevrolet.com/learn for details. ⁴ Read the vehicle Owner's Manual for important feature limitations and information.



INTERIOR DESIGN

High Country interior in Jet Black with Umber Accents and available features.

¹ Does not detect people or items. Always check rear seat before exiting.

TRY ONE ON FOR SIZE. Silverado fits just right. Larger exterior proportions allow for an expanded interior cabin, with improvements in front head room and rear leg room. Front seating has been raised by 1.5 inches for a more commanding view of the road, while the rear seatback angle has been enhanced for added comfort.

EVEN THE DETAILS HAVE DETAILS. Inside every Silverado, colors, materials and finishes were selected to match the personality of the vehicle. From the Granite accent fabric on LT to the perforated leather-appointed seating on LTZ to the exclusive stitching pattern on High Country, nothing was overlooked, including an attention to comfort, durability and quality.

REAR SEAT REMINDER! This feature activates when the rear doors are opened and closed up to 10 minutes before or anytime while your vehicle is on, so when you turn off the engine, under certain conditions, you will get a reminder to double-check for valuables left behind.

YOU'RE GETTING WARMER. Or maybe cooler. With the addition of rear-seat vents in Double Cab and Crew Cab models, passengers in the back are going to stay toasty warm or comfortably cool. Plus, heated rear outboard seats are standard on High Country and available on Crew Cab LTZ.



INNER STRENGTH IS JUST AS IMPORTANT.

WHERE YOU NEED IT. WHEN YOU NEED IT.

The first rule of creating the perfect truck interior is that it has to work for you. So we made sure everything is easy to see, easy to reach and easy to use. Large buttons and knobs are easy to adjust, even with gloved hands. And durable materials provide the long-lasting quality you expect.

FORWARD THINKING. Front-seat passengers will never wonder, “Where am I going to put that?” Upper and lower glove boxes accommodate a lot of important items, while an available

lighted center console storage compartment below the armrest doubles as a filing cabinet. Open compartments on either side of the console are ideal for flashlights, umbrellas or even a small tablet. A new storage pad on top of the instrument panel is just the right size for holding your smartphone. Plus, three cup holders are available in the front.

SECOND-ROW STORAGE SOLUTIONS.

A pair of available innovations take second-row functionality to a different level. Segment-first rear outboard

seatback compartments allow items like small laptops or tablets and charge cords to be hidden from view. And a storage bin found below the seat cushion is versatile enough to store longer gear like an ice scraper or taller items like two gallons of milk. Both features are standard on Crew Cab LTZ and High Country. And every Double Cab and Crew Cab model features a nearly flat load floor as well as larger rear door openings and low stepover height that help accommodate both cargo and passengers.

TURN IT UP. An available Bose premium 7-speaker sound system brings music to life with four door speakers, plus two mid-/high-range Twiddlers located in the instrument panel and a RichBass woofer in the console.

NOISE IS NOT YOUR FRIEND. To bring you a quiet cabin, we looked at everything. Whether it’s acoustic panels located in fixed seatbacks that help dampen noise and reduce squeaks or new dissipative carpet technology that absorbs sound, the results speak — quietly — for themselves.

TECHNOLOGY



NEW HEAD-UP DISPLAY. A first in the full-size pickup segment, this multi-color 15-inch diagonal display projects critical data — including select active safety information — onto the windshield so you can keep your eyes on the road. You can adjust the position of the display on the windshield. Available on LTZ and High Country.

KNOWLEDGE IS POWER. Finding out what you need to know, when you need to know it, is one of the keys to driving. Silverado offers three Driver Information Center clusters as well as 7- or 8-inch diagonal color touch-screens, so everything you need to know is always available.

INFOTAINMENT ENHANCEMENTS. Like a well-designed smartphone, the new Chevrolet Infotainment 3 system¹ is intuitive and easy to use. The screen display has been simplified, so tasks take fewer steps to complete. Response times are lightning quick, and voice recognition has taken a huge step

forward with the addition of an available second microphone. If that's not enough, you can create multiple customized profiles for a more personalized experience. And because the system features cloud connectivity, in-vehicle apps² can be easily updated.

¹ Chevrolet Infotainment System functionality varies by model. Full functionality requires compatible Bluetooth and smartphone, and USB connectivity for some devices. Map coverage available in the United States, Puerto Rico and Canada. ² Available on select 2017 model year and newer GM vehicles with compatible hardware. Additional data plan rates may apply. Third-party trademarks are the property of their respective third-party owners and used under agreement. Requires active service plan and paid AT&T vehicle data plan or compatible device with 3G/4G LTE tethering data plan. Visit onstar.com for details and limitations.



1. Apple CarPlay® COMPATIBILITY:¹

With Apple CarPlay, you can simply and smartly connect with some of your most used iPhone® features, including Maps, Music, Messages and Phone, right on your touch-screen display.

2. PLUG AND PLAY. Staying connected isn't a convenience, it's a necessity. With up to six USB data ports², including an available Type-C port on select models, playing music and charging your devices has never been easier.

3. YOU'RE GOING PLACES. The available Chevrolet Infotainment 3 Premium system³ with Navigation has been upgraded in just about every way. Destination input has been simplified, and you can pinch, zoom and drag map screens just like on your smartphone. And with OnStar Connected Navigation,⁴ you'll receive live traffic, map updates, better route calculations and more.

ANDROID AUTO COMPATIBILITY:⁵

You can quickly and intuitively interact with select smartphone apps that support Android Auto™. This system takes some of your compatible Android™ phone's features and lets you access them on the touch-screen display. You can access your phone, text messages, music, navigation and more.

¹ Vehicle user interface is a product of Apple and its terms and privacy statements apply. Requires compatible iPhone and data plan rates apply. ² Not compatible with all devices. ³ Chevrolet Infotainment System functionality varies by model. Full functionality requires compatible Bluetooth and smartphone, and USB connectivity for some devices. Map coverage available in the United States, Puerto Rico and Canada. ⁴ Connected Navigation and real-time points of interest only available on properly equipped vehicles. Requires paid plan or trial. Map coverage available in the United States, Puerto Rico and Canada. Visit onstar.com for details and limitations. ⁵ Vehicle user interface is a product of Google and its terms and privacy statements apply. Requires the Android Auto app on Google Play and an Android compatible smartphone running Android 5.0 Lollipop or higher. Data plan rates apply.

Apple CarPlay and iPhone are trademarks of Apple Inc., registered in the U.S. and other countries. Android, Android Auto, Google, Google Play and other marks are trademarks of Google LLC.

1. REAR CAMERA MIRROR! This available technology projects a wide-angle view of the area behind your Silverado. You can easily toggle between the mirror surface and a video screen that provides a view without the obstruction of head restraints, rear-seat passengers or cargo, so you can see more of what's behind you.

2. TEEN DRIVER! Perfect for new drivers, Teen Driver technology helps encourage better driving habits by providing an in-vehicle report card that monitors the frequency of certain available safety technology feature activations, muting the audio system when front-seat occupants aren't wearing their seat belts, and giving audible and visual warnings when the vehicle is traveling over a predetermined speed.

3. CORE STRENGTH. The safety cage utilizes six different grades of high-strength steel to help maintain the integrity of the passenger compartment. There are also six standard airbags.

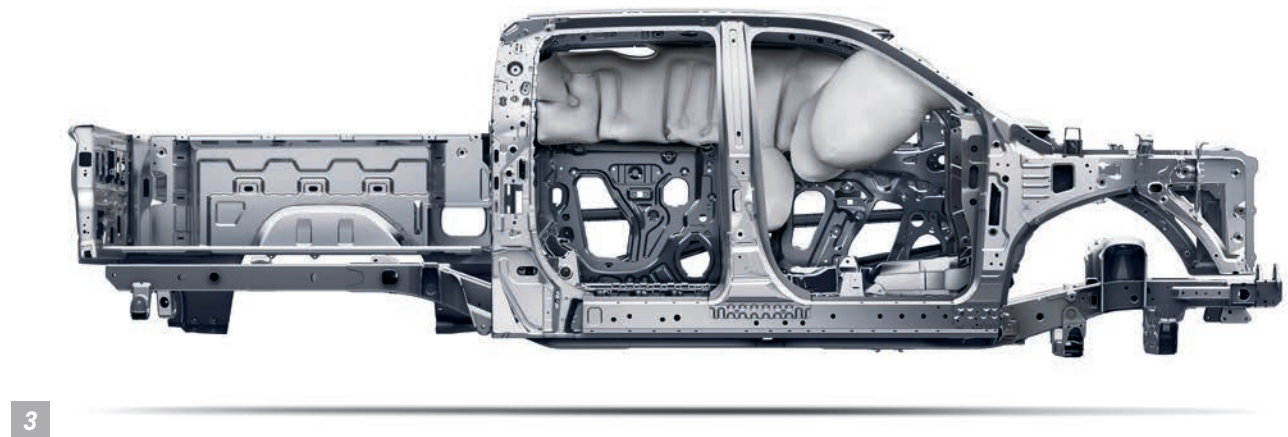
Safety or driver assistance features are no substitute for the driver's responsibility to operate the vehicle in a safe manner. The driver should remain attentive to traffic, surroundings and road conditions at all times. Visibility, weather and road conditions may affect feature performance. Read the vehicle Owner's Manual for more important feature limitations and information.



1



2



3

1 Read the vehicle Owner's Manual for important feature limitations and information. 2 Sitting too close to an airbag when it deploys can increase the risk of serious injury or death. Always properly wear your seat belt. A NOTE ON CHILD SAFETY: Always use seat belts and the correct child restraint for your child's age and size, even with airbags. Even in vehicles equipped with the Passenger Sensing System, children are safer when properly secured in a rear seat in the appropriate infant, child or booster seat. Never place a rear-facing infant restraint in the front seat of any vehicle equipped with an active frontal airbag. See your vehicle Owner's Manual and the child safety seat instructions for more safety information.



HD SURROUND VISION! This available feature can help when parallel parking and maneuvering at low speeds into tight garage spaces. That's because you get twice the view when you look at just one screen. Using four strategically placed cameras, HD Surround Vision

creates a virtual bird's-eye view of the areas immediately surrounding your Silverado. All camera viewpoints simultaneously merge to transmit a clear side-by-side digital image to the display screen. Several views are selectable.

ONSTAR AUTOMATIC CRASH RESPONSE?

In a crash, built-in sensors can automatically connect you to an Emergency-Certified Advisor³ who can help you get the assistance you need – even if you can't ask for it. Advisors can use GPS technology to

pinpoint your vehicle's location and request emergency help. OnStar Automatic Crash Response is included in the OnStar Safety & Security Plan² (available on WT, Custom and Custom Trail Boss).

¹ Read the vehicle Owner's Manual for important feature limitations and information. ² OnStar plan, working electrical system, cell service and GPS signal required. OnStar links to emergency services. Visit onstar.com for coverage map, details and system limitations. ³ OnStar Emergency-Certified Advisors are certified by the International Academies of Emergency Dispatch.

SAFETY

SAFETY STARTS WITH YOU. Safety or driver assistance features are no substitute for the driver's responsibility to operate the vehicle in a safe manner. The driver should remain attentive to traffic, surroundings and road conditions at all times. Visibility, weather and road conditions may affect feature performance. Read the vehicle Owner's Manual for more important feature limitations and information.

SAFETY STARTS WITH YOU. Safety or driver assistance features are no substitute for the driver's responsibility to operate the vehicle in a safe manner. The driver should remain attentive to traffic, surroundings and road conditions at all times. Visibility, weather and road conditions may affect feature performance. Read the vehicle Owner's Manual for more important feature limitations and information.

AS SAFE AS IT IS STRONG.

Being aware of your surroundings is important, especially in a full-size pickup. Because of that, we now offer more available advanced crash avoidance technologies compared to the previous generation. All to help bring you a sense of confidence whether you're towing, cruising on the highway or maneuvering through a tight parking lot.



SAFETY ALERT SEAT. This available seat uses directional vibration pulses from the driver-seat cushion instead of audible crash avoidance alerts to help indicate the direction of potential collision threats. This patented warning approach is tied into certain other available onboard crash avoidance systems.



LANE KEEP ASSIST WITH LANE DEPARTURE WARNING. This available camera-based system monitors road lines and can provide gentle steering wheel turns (and Lane Departure Warning alerts if necessary) to help drivers avoid unintentionally drifting out of their lane when they are not actively steering and their turn signal is not activated.



LOW SPEED FORWARD AUTOMATIC BRAKING. If the vehicle is traveling at a low speed and the available system detects that a front-end collision situation is imminent while following a detected vehicle and the driver has not already applied the brakes, the system can automatically apply the brakes to help reduce the collision's severity. The system may even help avoid a collision at very low speeds.



FORWARD COLLISION ALERT AND FOLLOWING DISTANCE INDICATOR. The available Forward Collision Alert feature can monitor how close your vehicle is to the vehicle in front of you. If the system determines that a front-end collision with a detected vehicle is imminent, it can alert the driver to a potential crash. The available Following Distance Indicator can provide the driver with the following time to a moving vehicle detected in front of them.



FRONT PEDESTRIAN BRAKING. If this available system detects that a pedestrian is directly ahead and a collision is imminent, and the driver has not already applied the brakes, the system can alert the driver and may even automatically apply the brakes to help the driver avoid or reduce the harm caused by the collision. Performance is limited at night.



FRONT AND REAR PARK ASSIST. Ideal when pulling into a parking spot at low speeds, this available system senses stationary objects and alerts you if an object is too close during low-speed maneuvering. Standard on High Country.



INTELLIBEAM HIGH BEAM ASSIST. When oncoming headlamps are sensed or when taillamps are detected in front of the vehicle, available IntelliBeam® high beam assist intuitively adjusts between low and high beams.



LANE CHANGE ALERT WITH SIDE BLIND ZONE ALERT. With this available safety technology, radar sensors in the rear corners of the vehicle help detect fast-approaching vehicles in the adjacent lanes as well as moving vehicles in the side mirror blind zones. Amber icons in the exterior mirrors indicate a vehicle's presence. Standard on High Country.



REAR CROSS TRAFFIC ALERT. Using radar sensors, this available feature can alert you to crossing traffic behind your Silverado when backing up. Audible warnings, as well as visual alerts on the Rear Vision Camera screen, are triggered if approaching vehicles are detected. Standard on High Country.



REAR VISION CAMERA. When the transmission is in Reverse, the Rear Vision Camera with dynamic guiding lines allows the driver to view objects directly behind the vehicle via the screen in the center stack. So it's easier to back up or park. And with available Hitch Guidance with Hitch View, it's simple to hook up a trailer.

ACCESSORIES



Dealer-installed 4-inch Round Chrome Assist Steps available from Chevrolet Accessories.



Lockable Bedside Storage Boxes available from Chevrolet Accessories.



Dealer-installed Hard Tri-Fold Tonneau Cover and Bedliner with integrated storage available from Chevrolet Accessories.



All-Weather Performance Floor Liner with Z71 emblem in Jet Black available from Chevrolet Accessories.

ACCESSORIES (CONTINUED)



Silverado 1500 Crew Cab Short Box RST 4x4 in Cajun Red Tintcoat (extra-cost color) with available dealer-installed 22-inch Low-Gloss Black Wheels and 4-inch Round Black Assist Steps from Chevrolet Accessories.



22" Gloss Black Aluminum Wheels with Chrome Inserts available from Chevrolet Accessories



22" Midnight Silver Aluminum Wheels with Chrome Inserts available from Chevrolet Accessories



22" Bright Chrome Aluminum Wheels available from Chevrolet Accessories



22" Low-Gloss Black Wheels with Machined Accents available from Chevrolet Accessories

MODEL AVAILABILITY

TRIM LEVEL	STANDARD ENGINE	AVAILABLE ENGINES	2WD	4x4	REGULAR CAB LONG BOX	DOUBLE CAB STANDARD BOX	CREW CAB SHORT BOX	CREW CAB STANDARD BOX
WT	4.3L EcoTec3 V6	5.3L EcoTec3 V8	●	●	●	●	●	●
CUSTOM	4.3L EcoTec3 V6	5.3L EcoTec3 V8	●	●		●	●	●
CUSTOM TRAIL BOSS	4.3L EcoTec3 V6	5.3L EcoTec3 V8		●		●	●	●
LT	2.7L Turbo	5.3L EcoTec3 V8 with DFM, 3.0L Duramax	●	●		●	●	●
RST	2.7L Turbo	5.3L EcoTec3 V8 with DFM, 3.0L Duramax	●	●		●	●	●
LT TRAIL BOSS	5.3L EcoTec3 V8 with DFM			●			●	●
LTZ	5.3L EcoTec3 V8 with DFM	6.2L EcoTec3 V8, 3.0L Duramax	●	●		●	●	●
HIGH COUNTRY	5.3L EcoTec3 V8 with DFM	6.2L EcoTec3 V8, 3.0L Duramax	●	●			●	●

STANDARD EQUIPMENT

Standard on every Silverado:

MECHANICAL
Brakes – 4-wheel antilock disc with Duralife brake rotors
Frame – fully boxed frame with hydroformed front section
StabiliTrak – Electronic Stability Control System with Proactive Roll Avoidance and Traction Control; includes Electronic Trailer Sway Control and Hill Start Assist ¹
Steering – rack-and-pinion with Electric Power Steering (EPS) assist
EXTERIOR
Bumper – rear CornerStep
Cargo area lighting – integrated with center high-mounted stoplamp
Fuel filler – capless fueling
Lamps – daytime running lamps with automatic exterior lamp control
Pickup bed – Durabed
Tailgate and bed rail – protection cap
Tie-downs – 12 fixed cargo tie-downs, rated at 500 lbs ² per corner
Tire – carrier lock
Tire – full-size spare

INTERIOR
Airbags ³ – Dual-stage frontal airbags for driver and front outboard passenger; Seat-mounted side-impact airbags for driver and front outboard passenger; Head-curtain airbags for front and rear outboard seating positions; Includes front outboard Passenger Sensing System for frontal outboard passenger airbag
Air conditioning – includes rear-seat air vents
Air filter monitor
Assist handles – driver and front passenger, A-pillar; rear passenger, B-pillar
Connectivity – Bluetooth® phone connectivity and wireless audio streaming ⁴
Display – outside temperature
Door locks – power (manual on Regular Cab WT)
Instrument cluster – 6-gauge with speedometer, fuel level, engine temperature, tachometer, voltage and oil pressure
USB port ⁵
Power outlet – 12-volt auxiliary, front
Rear Seat Reminder ⁶
Rear Vision Camera ¹
Teen Driver technology ¹
Tire Pressure Monitoring System with Tire Fill Alert (does not apply to spare tire)

¹ Read the vehicle Owner's Manual for important feature limitations and information. ² These maximum payload ratings are intended for comparison purposes only. Before you buy a vehicle or use it to haul people or cargo, carefully review the Vehicle Loading section of the Owner's Manual and check the carrying capacity of your specific vehicle on the label on the inside of the driver door jamb. ³ A NOTE ON CHILD SAFETY: Always use seat belts and the correct child restraint for your child's age and size, even with airbags. Even in vehicles equipped with the Passenger Sensing System, children are safer when properly secured in a rear seat in the appropriate infant, child or booster seat. Never place a rear-facing infant restraint in the front seat of any vehicle equipped with an active frontal airbag. See your vehicle Owner's Manual and the child safety seat instructions for more safety information. ⁴ Visit my.chevrolet.com/learn for vehicle and smartphone compatibility. ⁵ Not compatible with all devices. ⁶ Does not detect people or items. Always check rear seat before exiting.

PAYLOAD AND TRAILER WEIGHT RATINGS

MODEL	ENGINE	AXLE RATIO	MAX PAYLOAD ¹	MAX TRAILER WEIGHT ²
REGULAR CAB				
Regular Cab Long Box 2WD	4.3L V6	3.42	2,250	7,900
	5.3L V8 with 6-speed	3.42	2,180	10,100
Regular Cab Long Box 4x4	4.3L V6	3.42	2,130	7,700
	5.3L V8 with 6-speed	3.42	2,070	9,900
DOUBLE CAB				
Double Cab Standard Box 2WD	2.7L Turbo	3.42	2,070	7,000
	4.3L V6	3.42	2,040	7,700
	5.3L V8 with 6-speed	3.42	1,970	9,800
	5.3L V8 with 8-speed	3.23	1,980	9,900
	Duramax 3.0L Turbo-Diesel	N/A	N/A	N/A
Double Cab Standard Box 2WD Max Trailering Package	5.3L V8 with 8-speed	3.42	2,190	11,600
Double Cab Standard Box 4x4	2.7L Turbo	3.42	2,050	6,700
	4.3L V6	3.42	2,020	7,500
	5.3L V8 with 6-speed	3.42	1,950	9,600
	5.3L V8 with 8-speed	3.23	1,970	9,700
	Duramax 3.0L Turbo-Diesel	N/A	N/A	N/A
Double Cab Standard Box 4x4 Max Trailering Package	6.2L V8	3.23	1,670	9,300
	5.3L V8 with 8-speed	3.42	2,180	11,400
Double Cab Standard Box Trail Boss 4x4	6.2L V8	3.42	2,090	12,200
	4.3L V6	3.42	1,770	7,400
	5.3L V8 with 6-speed	3.42	1,670	9,500
	5.3L V8 with 8-speed	3.23	1,680	9,500

MODEL	ENGINE	AXLE RATIO	MAX PAYLOAD ¹	MAX TRAILER WEIGHT ²
CREW CAB				
Crew Cab Short Box 2WD	2.7L Turbo	3.42	2,060	6,900
	4.3L V6	3.42	2,030	7,700
	5.3L V8 with 6-speed	3.42	2,060	9,800
	5.3L V8 with 8-speed	3.23	2,060	9,800
	Duramax 3.0L Turbo-Diesel	N/A	N/A	N/A
Crew Cab Short Box 2WD Max Trailering Package	5.3L V8 with 8-speed	3.42	2,180	11,600
Crew Cab Standard Box 2WD	2.7L Turbo	3.42	1,990	6,900
	4.3L V6	3.42	1,960	7,600
	5.3L V8 with 6-speed	3.42	1,990	9,700
	5.3L V8 with 8-speed	3.23	1,990	9,800
	Duramax 3.0L Turbo-Diesel	N/A	N/A	N/A
Crew Cab Standard Box 2WD Max Trailering Package	5.3L V8 with 8-speed	3.42	2,110	11,500
Crew Cab Short Box 4x4	2.7L Turbo	3.42	2,050	6,700
	4.3L V6	3.42	2,020	7,500
	5.3L V8 with 6-speed	3.42	2,050	9,500
	5.3L V8 with 8-speed	3.23	2,060	9,600
	6.2L V8	3.23	1,670	9,300
Crew Cab Short Box 4x4 Max Trailering Package	Duramax 3.0L Turbo-Diesel	N/A	N/A	N/A
	5.3L V8 with 8-speed	3.42	2,170	11,400
Crew Cab Short Box Trail Boss 4x4	6.2L V8	3.42	2,100	12,100
	4.3L V6	3.42	1,760	7,300
	5.3L V8 with 6-speed	3.42	1,760	9,500
Crew Cab Standard Box 4x4	5.3L V8 with 8-speed	3.23	1,770	9,500
	2.7L Turbo	3.42	2,000	6,700
	4.3L V6	3.42	1,970	7,400
	5.3L V8 with 6-speed	3.42	2,000	9,500
	5.3L V8 with 8-speed	3.23	2,010	9,600
	6.2L V8	3.23	1,590	9,200
	Duramax 3.0L Turbo-Diesel	N/A	N/A	N/A
Crew Cab Standard Box 4x4 Max Trailering Package	5.3L V8 with 8-speed	3.42	2,130	11,300
	6.2L V8	3.42	2,010	12,000
Crew Cab Standard Box Trail Boss 4x4	4.3L V6	3.42	1,710	7,300
	5.3L V8 with 6-speed	3.42	1,710	9,400
	5.3L V8 with 8-speed	3.23	1,720	9,400

¹ These maximum payload ratings are intended for comparison purposes only. Before you buy a vehicle or use it to haul people or cargo, carefully review the Vehicle Loading section of the Owner’s Manual and check the carrying capacity of your specific vehicle on the label on the inside of the driver door jamb. ² Before you buy a vehicle or use it for trailering, carefully review the Trailering section of the Owner’s Manual. The weight of passengers, cargo and options or accessories may reduce the amount you can tow.

MODELS



SILVERADO WT In addition to standard features, WT includes:

MECHANICAL
Engine – 4.3L EcoTec3 V6
Exhaust – single-outlet
Transmission – 6-speed automatic
Rear axle ratio – 3.42
EXTERIOR
Bumpers – semigloss Black front and rear
Door handles – Black
Glass – solar-absorbing tinted
Grille – Black bar and mesh inserts
Headlamps – Halogen reflector headlamps and daytime running lamps
Mirrors – manual-adjustable, Black
Recovery hooks ¹ – Black (4x4 models)
Tailgate – manual lift
Taillamps – incandescent
Tires – P255/70R17 all-season
INTERIOR
Air conditioning – single-zone
Audio – 6-speaker audio system (2 speakers on Regular Cab)
Driver Information Center – 3.5-inch diagonal monochromatic display
Floor covering – rubberized vinyl
Entertainment – Chevrolet Infotainment 3 system ² with 7-inch diagonal color touch-screen, AM/FM stereo, Bluetooth [®] audio streaming ³ for two active devices, voice command pass-through to compatible phone, and Apple CarPlay ^{®4} and Android Auto ^{™5} compatibility
Media – USB port ⁶ on instrument panel
Seat – front 40/20/40 split-bench with 4-way manual driver and front passenger seat adjusters
Seat – rear 60/40 split-folding bench (Double Cab and Crew Cab)
Steering column – manual tilt-wheel with theft-deterrent locking feature
Windows – power driver express-up/-down, all others express-down (manual on Regular Cab)



Jet Black Vinyl

Jet Black Cloth



17" Ultra Silver-Painted Steel (RD6)
Standard on WT



17" Bright Silver-Painted Aluminum (Q5U)
Available on WT

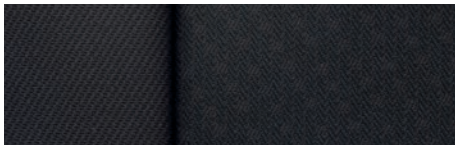
¹ To avoid the risk of injury, never use recovery hooks to tow a vehicle. See the Owner's Manual for more information. ² Chevrolet Infotainment System functionality varies by model. Full functionality requires compatible Bluetooth and smartphone, and USB connectivity for some devices. ³ Visit my.chevrolet.com/learn for vehicle and smartphone compatibility. ⁴ Vehicle user interface is a product of Apple and its terms and privacy statements apply. Requires compatible iPhone and data plan rates apply. ⁵ Vehicle user interface is a product of Google and its terms and privacy statements apply. Requires the Android Auto app on Google Play and an Android compatible smartphone running Android 5.0 Lollipop or higher. Data plan rates apply. ⁶ Not compatible with all devices.

MODELS (CONTINUED)



SILVERADO CUSTOM In addition to or replacing WT features, Custom includes:

EXTERIOR
Bumpers – body-color front and rear
Glass – deep-tinted behind front doors
Grille – body-color bar with Black mesh inserts
Mirrors – heated, power-adjustable
Taillamps – LED
Tires – P275/60R20 all-season
INTERIOR
Cruise control – electronic with Set and Resume Speed, steering wheel-mounted controls
Floor covering – color-keyed carpeting
Floor mats – vinyl, front and rear
Remote Keyless Entry



Jet Black Cloth

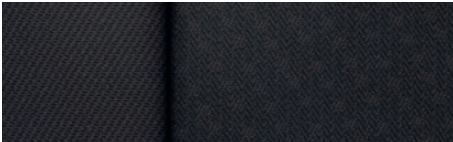


20" Bright Silver-Painted Aluminum (NZP)
Standard on Custom

MODELS (CONTINUED)



SILVERADO CUSTOM TRAIL BOSS In addition to or replacing Custom features, Custom Trail Boss includes:
MECHANICAL
Air filter – high-capacity
Differential – heavy-duty automatic locking rear
Trailer Package – trailer hitch, 7-pin and 4-pin connectors, and Hitch Guidance ¹
Transfer case – Autotrac 2-speed electronic
Suspension Package – Z71 Off-Road Package, Off-Road suspension with 2-inch factory lift and monotube shocks, Hill Descent Control, skid plates and Z71 badge
EXTERIOR
Bumpers – high-gloss Black, front and rear
Grille – high-gloss Black bar with mesh inserts and Z71 badge
Recovery hooks ² – Performance Red
Tires – LT275/65R18 Goodyear Wrangler DuraTrac®



Jet Black Cloth



18" High-Gloss Black-Painted Aluminum (RD1)
Standard on Custom Trail Boss



20" Painted-Aluminum with Machined Face
and Gray Accent Pockets (NZT)
Available on Custom Trail Boss

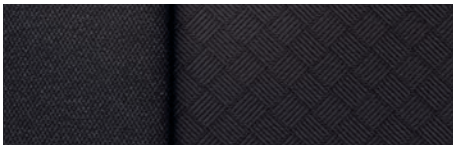
¹ Read the vehicle Owner's Manual for important feature limitations and information. ² To avoid the risk of injury, never use recovery hooks to tow a vehicle. See the Owner's Manual for more information.

MODELS (CONTINUED)

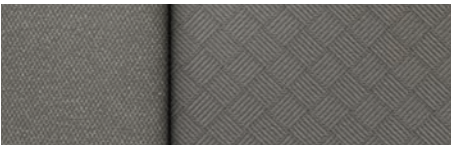


SILVERADO LT In addition to or replacing WT features, LT includes:

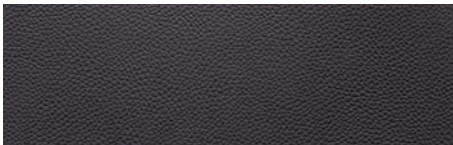
MECHANICAL
Engine – 2.7L Turbo with auto stop/start
Transmission – 8-speed automatic
EXTERIOR
Bumpers – chrome, front and rear
Door handles – body-color
Glass – deep-tinted behind front doors
Grille – chrome bars with high-gloss Black mesh inserts
Headlamps – LED reflector and LED signature daytime running lamps
Mirror caps – chrome
Mirrors – heated, power-adjustable with driver spotter mirror
Tailgate – manual with EZ Lift
INTERIOR
Air conditioning – single-zone manual, semi-automatic
Chevrolet Connected Services ¹ – 1 month of OnStar Safety & Security coverage; plus 1 month or 3 GB of 4G LTE data (whichever comes first)
Compass – located in instrument cluster
Cruise control – electronic with Set and Resume Speed, steering wheel-mounted controls
Driver Information Center – 4.2-inch diagonal color display and driver personalization
Entertainment – Chevrolet Infotainment 3 system ² with 8-inch diagonal color touch-screen, AM/FM stereo, Bluetooth [®] audio streaming ³ for two active devices, voice command pass-through to compatible phone, and Apple CarPlay ^{®4} and Android Auto ^{™5} compatibility
Media – 2 USB ports ⁶ on instrument panel
Remote Keyless Entry
Seat – front 40/20/40 split-bench with covered armrest storage
Steering wheel – mounted audio and phone controls



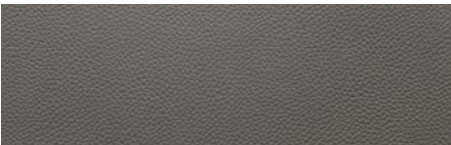
Jet Black Cloth



Gideon Cloth



Jet Black Leather Appointments



Gideon Leather Appointments



17" Bright Silver-Painted Aluminum (Q5U)
Standard on LT



18" Bright Silver-Painted Aluminum (PZX)
Available on LT



20" Painted-Aluminum with Machined Face
and Argent Metallic Pockets (RD4)
Available on LT

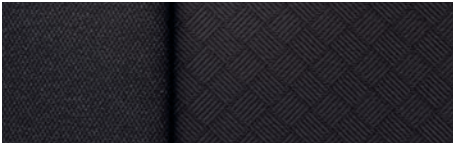
¹ Connected Services include navigation services and Remote Access Plan, and 1 month or 3 GB of 4G LTE data (whichever comes first) from vehicle delivery date. Data plans offered by AT&T. Services are subject to User Terms and limitations. Certain services require working electrical system, cell service and GPS signal. OnStar links to emergency services. Visit onstar.com for coverage map, details and system limitations. ² Chevrolet Infotainment System functionality varies by model. Full functionality requires compatible Bluetooth and smartphone, and USB connectivity for some devices. ³ Visit my.chevrolet.com/learn for vehicle and smartphone compatibility. ⁴ Vehicle user interface is a product of Apple and its terms and privacy statements apply. Requires compatible iPhone and data plan rates apply. ⁵ Vehicle user interface is a product of Google and its terms and privacy statements apply. Requires the Android Auto app on Google Play and an Android compatible smartphone running Android 5.0 Lollipop or higher. Data plan rates apply. ⁶ Not compatible with all devices.

MODELS (CONTINUED)

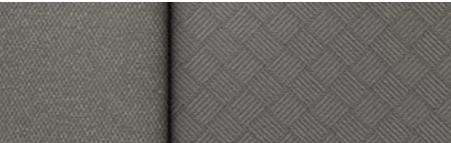


SILVERADO RST In addition to or replacing LT features, RST includes:

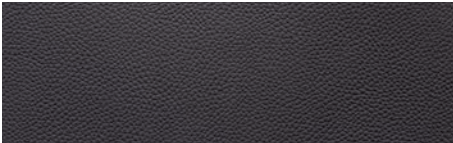
EXTERIOR
Bumpers – body-color, front and rear
Cargo area lighting – LED, in pickup bed, key fob-activated
Chevrolet bowtie emblems – Black
Foglamps – LED
Grille – body-color bars with high-gloss Black mesh inserts
Mirror caps – high-gloss Black
Tailgate – EZ Lift, includes power lock and release
Taillamps – LED
Tires – P265/65R18 all-season
INTERIOR
Defogger – rear-window
Keyless Open and Start
Power outlet – 12-volt auxiliary, rear
Remote vehicle starter system
Steering column – electric lock control
Theft-deterrent system – unauthorized entry
USB ports ¹ – second-row, charge-only



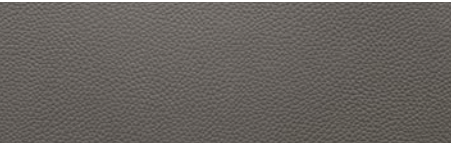
Jet Black Cloth



Gideon Cloth



Jet Black Leather Appointments



Gideon Leather Appointments



18" Bright Silver-Painted Aluminum (PZX)
Standard on RST



20" Painted-Aluminum with Machined Face
and Argent Metallic Pockets (RD4)
Available on RST

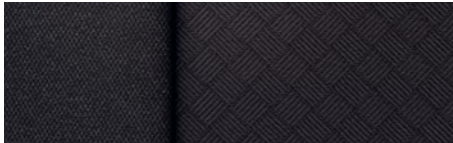
¹ Not compatible with all devices.

MODELS (CONTINUED)

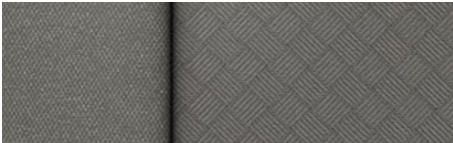


SILVERADO LT TRAIL BOSS In addition to or replacing LT features, LT Trail Boss includes:

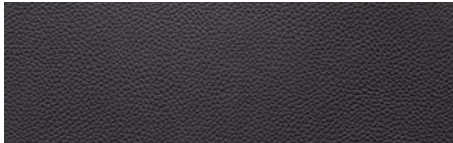
MECHANICAL
Air filter – high-capacity
Differential – heavy-duty automatic locking rear
Engine – 5.3L EcoTec3 V8
Exhaust – dual-outlet exhaust with polished tips
Rear axle ratio – 3.23
Trailer Package – trailer hitch, 7-pin and 4-pin connectors, and Hitch Guidance ¹
Transfer case – Autotrac 2-speed electronic
Transmission oil cooler – auxiliary external
Suspension Package – Z71 Off-Road Package, Off-Road suspension with 2-inch factory lift, monotube shocks, Hill Descent Control, skid plates and Z71 badge
EXTERIOR
Bumpers – high-gloss Black, front and rear
Cargo area lighting – LED, in pickup bed, key fob-activated
Chevrolet bowtie emblems – Black
Recovery hooks ² – Performance Red
Taillamps – LED
Tailgate – EZ Lift, includes power lock and release
Tires – LT275/65R18 Goodyear Wrangler DuraTrac [®]
INTERIOR
Defogger – rear-window
Floor liners – all-weather, front and rear with Z71 logo
Keyless Open and Start
Power outlet – 12-volt auxiliary, rear
Remote vehicle starter system
Steering column – electric lock control
Steering wheel – leather-wrapped
Theft-deterrent system – unauthorized entry
USB ports ³ – second-row, charge-only



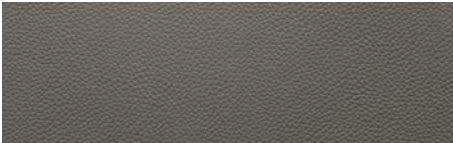
Jet Black Cloth



Gideon Cloth



Jet Black Leather Appointments



Gideon Leather Appointments



18" High-Gloss Black-Painted Aluminum (RD1)
Standard on LT Trail Boss

20" Painted-Aluminum with Machined Face and
Gray Accent Pockets (NZT)
Available on LT Trail Boss

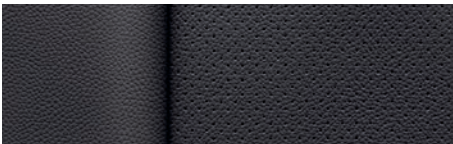
¹ Read the vehicle Owner's Manual for important feature limitations and information. ² To avoid the risk of injury, never use recovery hooks to tow a vehicle. See the Owner's Manual for more information. ³ Not compatible with all devices.

MODELS (CONTINUED)

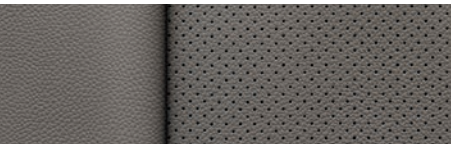


SILVERADO LTZ In addition to or replacing LT features, LTZ includes:

MECHANICAL
Differential – heavy-duty automatic locking rear
Engine – 5.3L EcoTec3 V8
Oil coolers – auxiliary external for engine and transmission
Rear axle ratio – 3.23
Trailer Package – trailer hitch, 7-pin and 4-pin connectors, Hitch Guidance with Hitch View ¹ , Trailer Tire Pressure Monitoring System, Advanced Trailer System and integrated trailer brake controller
EXTERIOR
Cargo area lighting – LED, in pickup bed, key fob-activated
Door handles – chrome
Foglamps – LED
Grille – chrome bars with high-gloss Black mesh and chrome inserts
Mirror caps – chrome
Mirrors – heated, power-adjustable, power-folding with memory and driver-side auto-dimming features, puddle lamps, and side perimeter lighting
Power outlet – 120-volt (up to 400 watts, shared with instrument panel 120-volt outlet), bed-mounted
Tailgate – EZ Lift, includes power lock and release
Taillamps – LED
Wheelhouse liners – rear
INTERIOR
Air conditioning – dual-zone automatic climate control
Defogger – rear-window
Entertainment – Chevrolet Infotainment 3 Plus system ² with 8-inch diagonal HD color touch-screen, AM/FM stereo, Bluetooth [®] audio streaming ³ for two active devices, Apple CarPlay ^{®4} and Android Auto ^{™5} compatibility, enhanced voice recognition, in-vehicle apps, and cloud-connected personalization for select infotainment and vehicle settings (dealer upgradeable to embedded navigation; subscription required for enhanced and connected services after trial period)
Keyless Open and Start
Media – 2 USB ports ⁶ and SD card reader on instrument panel
Memory – driver seat and exterior mirror settings
Power outlets – 120-volt (up to 400 watts, shared with cargo bed 120-volt outlet), on instrument panel; 12-volt auxiliary, rear
Rear Vision Camera ¹ – HD



Jet Black Perforated Leather Appointments



Gideon Perforated Leather Appointments



18" Bright Silver-Painted Aluminum (PZX)
Standard on LTZ



20" Polished-Finish Aluminum (RD2)
Available on LTZ

INTERIOR (CONTINUED)
Remote vehicle starter system
Seats – heated, 10-way power driver and front outboard passenger seat adjusters with power lumbar control
Seat – rear 60/40 folding bench with underseat storage and center fold-out armrest with 2 cup holders (seatback storage included on Crew Cab)
SiriusXM [®] Radio ⁷ – All Access Package with 3-month trial subscription
Steering column – manual tilt/telescoping
Steering wheel – heated, leather-wrapped
Theft-deterrent system – unauthorized entry
USB ports ⁶ – second-row, charge-only
Windows – power driver and front passenger express-up/-down, rear express-down

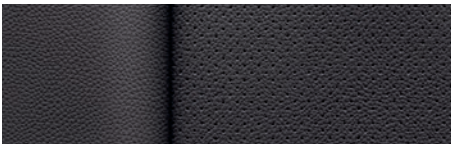
¹ Read the vehicle Owner's Manual for important feature limitations and information. ² Chevrolet Infotainment System functionality varies by model. Full functionality requires compatible Bluetooth and smartphone, and USB connectivity for some devices. ³ Visit my.chevrolet.com/learn for vehicle and smartphone compatibility. ⁴ Vehicle user interface is a product of Apple and its terms and privacy statements apply. Requires compatible iPhone and data plan rates apply. ⁵ Vehicle user interface is a product of Google and its terms and privacy statements apply. Requires the Android Auto app on Google Play and an Android compatible smartphone running Android 5.0 Lollipop or higher. Data plan rates apply. ⁶ Not compatible with all devices. ⁷ If you decide to continue service after your trial, the subscription plan you choose will automatically renew thereafter and you will be charged according to your chosen payment method at then-current rates. Fees and taxes apply. To cancel you must call SiriusXM at 1-866-635-2349. See SiriusXM Customer Agreement for complete terms at siriusxm.com. All fees and programming subject to change.

MODELS (CONTINUED)

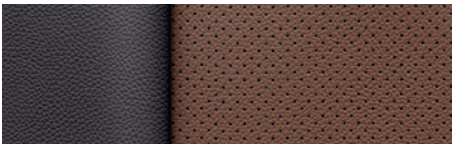


SILVERADO HIGH COUNTRY In addition to or replacing LTZ features, High Country includes:

MECHANICAL
Exhaust – dual-outlet exhaust with polished tips
Transfer case – Autotrac 2-speed electronic (4x4 models)
EXTERIOR
Assist steps – chrome, wheel-to-wheel
Bedliner – Black Chevytec spray-on bedliner with High Country logo
Bumpers – body-color, front and rear
Grille – chrome bars with high-gloss Black mesh and chrome/bronze inserts
Headlamps – high-intensity LED reflector headlamps with LED daytime running lamps
Recovery hooks ¹ – chrome
Tailgate – power-up/-down tailgate with power lock and release
INTERIOR
Audio system – Bose premium 7-speaker sound system with RichBass woofer
Console – floor-mounted console with cup holders, cell phone storage, power cord management and hanging file folder capability
Driver Information Center – enhanced 8-inch diagonal multi-color configurable display, includes analog speedometer and tachometer
Front and Rear Park Assist ² – ultrasonic
Entertainment – Chevrolet Infotainment 3 Premium system ³ with Connected Navigation and 8-inch diagonal HD color touch-screen, AM/FM stereo, Bluetooth [®] audio streaming ⁴ for two active devices, Apple CarPlay ^{®5} and Android Auto ^{™6} compatibility, enhanced voice recognition, additional memory for in-vehicle apps, and cloud-connected personalization for select infotainment and vehicle settings (subscription required for enhanced and connected services after trial period)
Lane Change Alert with Side Blind Zone Alert ²
Media – 2 USB ports, ⁷ SD card reader and auxiliary input jack inside center console
Rear Cross Traffic Alert ²
Rear window – power-sliding rear window with defogger
Seats – front bucket seats with center console
Seats – ventilated driver and front passenger, heated rear outboard seating positions
Wireless charging ⁸



Jet Black Perforated Leather Appointments



Jet Black/Umbre Perforated Leather Appointments



20" Painted-Aluminum with Machined Face and Light Argent Pockets (NZJ)
Standard on High Country



22" Polished-Aluminum (RVA)
Available on High Country

¹ To avoid the risk of injury, never use recovery hooks to tow a vehicle. See the Owner's Manual for more information.
² Read the vehicle Owner's Manual for important feature limitations and information. ³ Chevrolet Infotainment System functionality varies by model. Full functionality requires compatible Bluetooth and smartphone, and USB connectivity for some devices. Map coverage available in the United States, Puerto Rico and Canada. ⁴ Visit my.chevrolet.com/learn for vehicle and smartphone compatibility. ⁵ Vehicle user interface is a product of Apple and its terms and privacy statements apply. Requires compatible iPhone and data plan rates apply. ⁶ Vehicle user interface is a product of Google and its terms and privacy statements apply. Requires the Android Auto app on Google Play and an Android compatible smartphone running Android 5.0 Lollipop or higher. Data plan rates apply. ⁷ Not compatible with all devices. ⁸ The system wirelessly charges one PMA- or Qi-compatible mobile device. Some devices require an adaptor or back cover. To check for phone or other device compatibility, visit my.chevrolet.com/learn for details.

COLORS



Summit White¹



Iridescent Pearl Tricoat^{2,3}



Oakwood Metallic^{4,5}



Havana Brown Metallic



Northsky Blue Metallic



Shadow Gray Metallic¹

¹ Not available on High Country. ² Extra-cost color. ³ Not available on WT, Custom or Custom Trail Boss. ⁴ Late availability. ⁵ Not available on WT. Not available on Double Cab models or on models with available power-retractable assist steps.

COLORS (CONTINUED)



Silver Ice Metallic¹



Satin Steel Metallic



Red Hot²



Cajun Red Tintcoat^{3,4}



Black

¹ Not available on High Country. ² Not available on LTZ or High Country. ³ Extra-cost color. ⁴ Not available on WT.

INTERIOR COLOR

EXTERIOR COLOR	CODE	JET BLACK	GIDEON	JET BLACK/ UMBER
Iridescent Pearl Tricoat	G1W	○	○	○
Havana Brown Metallic	G2X	○	○	○
Red Hot	G7C	○	—	—
Satin Steel Metallic	G9K	○	○	○
Northsky Blue Metallic	GA0	○	○	—
Silver Ice Metallic	GAN	○	○	—
Summit White	GAZ	○	○	—
Black	GBA	○	○	○
Oakwood Metallic	GE0	○	○	○
Shadow Gray Metallic	GJI	○	○	—
Cajun Red Tintcoat	GPJ	○	○	—

○ AVAILABLE — NOT AVAILABLE

ENGINES



4.3L ECOTEC3 V6 Standard on WT, Custom and Custom Trail Boss.

EcoTec3 technology includes Active Fuel Management, Direct Injection and Variable Valve Timing

6-speed automatic transmission

285 hp @ 5300 rpm

305 lb.-ft. of torque @ 3900 rpm

Most torque of any standard V6 in its class

EPA-estimated MPG city/highway: 16/21 (2WD), 15/20 (4x4), 14/18 (Trail Boss)

Max trailering: 7,900 lbs^{1,2}

Max payload: 2,250 lbs^{2,3}

Bore and stroke: 99.6 mm x 92 mm

Displacement: 4301 cc (262 cu. in.)

Compression ratio: 11.0:1

Ignition: Coil-near-plug



5.3L ECOTEC3 V8 Available on WT, Custom and Custom Trail Boss.

EcoTec3 technology includes Active Fuel Management, Direct Injection and Variable Valve Timing

6-speed automatic transmission

355 hp @ 5600 rpm

383 lb.-ft. of torque @ 4100 rpm

EPA-estimated MPG city/highway: 15/21 (2WD), 15/20 (4x4), 14/18 (Trail Boss)

Max trailering: 10,100 lbs^{1,2}

Max payload: 2,180 lbs^{2,3}

Bore and stroke: 96.01 mm x 92 mm

Displacement: 5328 cc (325 cu. in.)

Compression ratio: 11.0:1

Ignition: Coil-near-plug



2.7L TURBO Standard on LT and RST.

EcoTec3 technology includes Active Fuel Management, Direct Injection and Variable Valve Timing

8-speed automatic transmission

310 hp @ 5600 rpm

348 lb.-ft. of torque @ 1500 rpm

EPA-estimated MPG city/highway: 20/23 (2WD), 19/22 (4x4)

Max trailering: 7,000 lbs^{1,4}

Max payload: 2,070 lbs^{3,4}

Bore and stroke: 92.25 mm x 102 mm

Displacement: 2726 cc (166 cu. in.)

Compression ratio: 11.5:1

Ignition: Coil-near-plug

¹ Before you buy a vehicle or use it for trailering, carefully review the Trailering section of the Owner's Manual. The weight of passengers, cargo and options or accessories may reduce the amount you can tow. ² Requires Silverado 1500 Regular Cab Long Box 2WD. ³ These maximum payload ratings are intended for comparison purposes only. Before you buy a vehicle or use it to haul people or cargo, carefully review the Vehicle Loading section of the Owner's Manual and check the carrying capacity of your specific vehicle on the label on the inside of the driver door jamb. ⁴ Requires Silverado 1500 Double Cab Standard Box 2WD.

ENGINES (CONTINUED)



5.3L ECOTEC3 V8 Standard on LT Trail Boss, LTZ and High Country. Available on LT and RST.

EcoTec3 technology includes Dynamic Fuel Management, Direct Injection and Variable Valve Timing

8-speed automatic transmission

355 hp @ 5600 rpm

383 lb.-ft. of torque @ 4100 rpm

EPA-estimated MPG city/highway: 17/24 (2WD XFE), 17/23 (2WD), 16/22 (4x4), 15/20 (Trail Boss)

Max trailering: 11,600 lbs.^{1,2}

Max payload: 2,190 lbs.³

Bore and stroke: 96.01 mm x 92 mm

Displacement: 5328 cc (325 cu. in.)

Compression ratio: 11.0:1

Ignition: Coil-near-plug



6.2L ECOTEC3 V8 Available on LTZ and High Country.

EcoTec3 technology includes Dynamic Fuel Management, Direct Injection and Variable Valve Timing

10-speed automatic transmission

420 hp @ 5600 rpm

460 lb.-ft. of torque @ 4100 rpm

EPA-estimated MPG city/highway: 16/20 (4x4)

Max trailering: 12,200 lbs.^{1,4}

Max payload: 2,100 lbs.⁴

Bore and stroke: 103.25 mm x 92 mm

Displacement: 6162 cc (376 cu. in.)

Compression ratio: 11.0:1

Ignition: Coil-near-plug



DURAMAX 3.0L TURBO-DIESEL Available on LT, RST, LTZ and High Country.

Available Summer 2019. Engine specifications not available at time of printing.

¹ Before you buy a vehicle or use it for trailering, carefully review the Trailering section of the Owner's Manual. The weight of passengers, cargo and options or accessories may reduce the amount you can tow. ² Requires Silverado 1500 Double Cab Standard Box 2WD with available Max Trailering Package. ³ These maximum payload ratings are intended for comparison purposes only. Before you buy a vehicle or use it to haul people or cargo, carefully review the Vehicle Loading section of the Owner's Manual and check the carrying capacity of your specific vehicle on the label on the inside of the driver door jamb. ⁴ Requires Silverado 1500 Double Cab Standard Box 4x4 with available Max Trailering Package.

AVAILABLE FEATURES

	WT	CUSTOM	CUSTOM TRAIL BOSS	LT	RST	LT TRAIL BOSS	LTZ	HIGH COUNTRY
EXTERIOR								
Assist steps: Chrome, wheel-to-wheel (Crew Cab)	–	–	–	○	○	–	○	●
Power-retractable running boards with rearward articulating, foot-activated to provide bed access (Crew Cab) (LTZ requires available Safety Package)	–	–	–	–	–	–	○	○
Bedliner: Chevytec spray-on, Black with logo (bed only; tailgate has Black composite inner panel) (LT, RST and LT Trail Boss require available Bed Protection Package)	○	○	○	○	○	○	○	●
Tailgate: EZ Lift, power lock and release (WT requires available WT Convenience Package; Custom and Custom Trail Boss require available Custom Convenience Package; LT requires available LT Convenience Package)	○	○	○	○	●	●	●	○
Power-up/-down gate function, power lock and release (LTZ requires available LTZ Convenience Package, LTZ Plus Package, LTZ Texas Edition or LTZ Premium Package)	–	–	–	–	–	–	○	●
Wheelhouse liners: Rear (LT, RST and LT Trail Boss require available Bed Protection Package)	–	–	–	○	○	○	●	●
MECHANICAL								
4.3L EcoTec3 V6 engine with Active Fuel Management and 6-speed automatic transmission; 285 hp @ 5300 rpm, 305 lb.-ft. of torque @ 3900 rpm	●	●	●	–	–	–	–	–
2.7L Turbo engine with Active Fuel Management and 8-speed automatic transmission; 310 hp @ 5600 rpm, 348 lb.-ft. of torque @ 1500 rpm (not available with Z71 Off-Road Package)	–	–	–	●	●	–	–	–
5.3L EcoTec3 V8 engine with Active Fuel Management and 6-speed automatic transmission; 355 hp @ 5600 rpm, 383 lb.-ft. of torque @ 4100 rpm	○	○	○	–	–	–	–	–
5.3L EcoTec3 V8 engine with Dynamic Fuel Management and 8-speed automatic transmission; 355 hp @ 5600 rpm, 383 lb.-ft. of torque @ 4100 rpm	–	–	–	○	○	●	●	●
6.2L EcoTec3 V8 engine with Dynamic Fuel Management and 10-speed automatic transmission; 420 hp @ 5600 rpm, 460 lb.-ft. of torque @ 4100 rpm (4x4 models)	–	–	–	–	–	–	○	○
Duramax 3.0L Turbo-Diesel I-6 engine and 10-speed automatic transmission (available Summer 2019)	–	–	–	○	○	–	○	○
Auto stop/start	–	–	–	●	●	●	●	●
Differential: Heavy-duty automatic locking rear	○	○	●	○	○	●	●	●
Engine block heater	○	○	○	○	○	○	○	○

● STANDARD ○ AVAILABLE – NOT AVAILABLE

	WT	CUSTOM	CUSTOM TRAIL BOSS	LT	RST	LT TRAIL BOSS	LTZ	HIGH COUNTRY
MECHANICAL (CONTINUED)								
Exhaust: Dual-outlet, with polished tips (Custom and Custom Trail Boss require available 5.3L V8 engine; LT and RST require available Z71 Off-Road Package; LTZ requires available Z71 Off-Road Package or 6.2L V8 engine)	–	○	○	○	○	●	○	●
Hitch Guidance ¹ (WT, Custom, LT and RST require available Trailering Package)	○	○	●	○	○	●	●	●
Skid plates (4x4 models) (WT requires available Work Truck Package, Z71 Off-Road Package or Snow Plow Prep Package; LT and LTZ require available Z71 Off-Road Package or Snow Plow Prep Package; RST and High Country require available Z71 Off-Road Package)	○	–	●	○	○	●	○	○
Trailer brake controller: Integrated (WT, Custom, LT and RST require available Trailering Package)	○	○	○	○	○	○	●	●
Transfer case: Single-speed, electronic Autotrac with rotary dial control (4x4 models)	●	●	–	●	●	–	●	–
2-speed, electronic Autotrac with rotary dial control (4x4 models) (WT, LT and RST require available Z71 Off-Road Package; LTZ requires available Z71 Off-Road Package or 6.2L V8 engine)	○	–	●	○	○	●	○	●
SAFETY								
Following Distance Indicator ¹ (requires available Safety Package II)	–	–	–	–	–	–	○	○
Forward Collision Alert ¹ (requires available Safety Package II)	–	–	–	–	–	–	○	○
Front and Rear Park Assist, ultrasonic ¹ (WT requires available WT Safety Package; LT, RST, LT Trail Boss and LTZ require available Safety Package)	○	–	–	○	○	○	○	●
Front Pedestrian Braking ¹ (requires available Safety Package II)	–	–	–	–	–	–	○	○
IntelliBeam headlamps: ¹ Automatic high beam on/off (requires available Safety Package II)	–	–	–	–	–	–	○	○
Lane Change Alert with Side Blind Zone Alert ¹ (WT requires available WT Safety Package; LT, RST, LT Trail Boss and LTZ require available Safety Package)	○	–	–	○	○	○	○	●
Lane Keep Assist with Lane Departure Warning ¹ (requires available Safety Package II)	–	–	–	–	–	–	○	○
Low Speed Forward Automatic Braking ¹ (requires available Safety Package II)	–	–	–	–	–	–	○	○
1 month of OnStar Safety & Security Plan ² coverage, which includes Automatic Crash Response, Emergency Services, Stolen Vehicle Assistance, Roadside Assistance and Turn-by-Turn Navigation ³ (Custom and Custom Trail Boss require available Infotainment Package)	○	○	○	●	●	●	●	●
Rear Cross Traffic Alert ¹ (WT requires available WT Safety Package; LT, RST, LT Trail Boss and LTZ require available Safety Package)	○	–	–	○	○	○	○	●
SafetyAlert Seat for driver ¹ (requires available Safety Package II)	–	–	–	–	–	–	○	○

¹ Read the vehicle Owner's Manual for important feature limitations and information. ² OnStar plan, working electrical system, cell reception and GPS signal required. OnStar links to emergency services. Stolen Vehicle Assistance requires armed GM factory-installed theft-deterrent system, contact method on file and enrollment to receive alerts. Additional messaging and data rates may apply. Services are intended to assist with vehicle recovery and do not prevent theft or protect against damage or loss. Visit onstar.com for coverage map, details and system limitations. ³ Subject to User Terms and limitations, and varies by vehicle model. Mobile app functionality available on select devices. Map coverage available in the United States, Puerto Rico and Canada.

AVAILABLE FEATURES (CONTINUED)

● STANDARD ○ AVAILABLE – NOT AVAILABLE

	WT	CUSTOM	CUSTOM TRAIL BOSS	LT	RST	LT TRAIL BOSS	LTZ	HIGH COUNTRY
SAFETY (CONTINUED)								
Teen Driver technology ¹	●	●	●	●	●	●	●	●
Theft-deterrent system: Unauthorized entry (Custom and Custom Trail Boss require available Custom Convenience Package; LT requires available Convenience Package or Remote Start Package)	–	○	○	○	●	●	●	●
INTERIOR								
Compass: Display in instrument cluster (WT, Custom and Custom Trail Boss require available OnStar)	○	○	○	●	●	●	●	●
Console: Floor-mounted, with cup holders, cell phone storage, power cord management and hanging file holder capability (RST and LT Trail Boss require available Convenience Package with Bucket Seats; LTZ requires available LTZ Convenience Package)	–	–	–	–	○	○	○	●
Driver Information Center: 3.5-inch diagonal monochromatic display	●	●	●	–	–	–	–	–
4.2-inch diagonal color display and driver personalization	–	–	–	●	●	●	●	–
Enhanced with 8-inch diagonal multi-color configurable display, includes analog speedometer and tachometer (LTZ requires available Technology Package; not available with Trailer Camera Package)	–	–	–	–	–	–	○	●
Head-Up Display (requires available Technology Package; not available with Trailer Camera Package)	–	–	–	–	–	–	○	○
Keyless Open and Start (LT requires available LT Convenience Package)	–	–	–	○	●	●	●	●
Power outlets: 120-volt (400 watts shared), instrument panel- and bed-mounted (WT requires available WT Convenience Package; LT, RST and LT Trail Boss require available Convenience Package II)	○	–	–	○	○	○	●	●
Rear Camera Mirror ¹ (requires available Technology Package; not available with Trailer Camera Package)	–	–	–	–	–	–	○	○
Steering column: Manual tilt/telescoping (LT requires available LT Convenience Package; RST requires available RST Convenience Package or Convenience Package with Bucket Seats; LT Trail Boss requires available LT Trail Boss Convenience Package or Convenience Package with Bucket Seats)	–	–	–	○	○	○	●	●
Sunroof: Power (Crew Cab) (LT, RST and LT Trail Boss require available Convenience Package II; LTZ requires available LTZ Convenience Package)	–	–	–	○	○	○	○	○
Wireless charging ² (LTZ requires available LTZ Convenience Package II)	–	–	–	–	–	–	○	●

	WT	CUSTOM	CUSTOM TRAIL BOSS	LT	RST	LT TRAIL BOSS	LTZ	HIGH COUNTRY
ENTERTAINMENT								
Chevrolet Infotainment 3 system ³ with 7-inch diagonal color touch-screen, AM/FM stereo, Bluetooth [®] audio streaming ⁴ for two active devices, voice command pass-through to compatible phone, and Apple CarPlay ^{®5} and Android Auto ^{™6} compatibility	●	●	●	–	–	–	–	–
Chevrolet Infotainment 3 system ³ with 8-inch diagonal color touch-screen, includes features listed above	–	–	–	●	●	●	–	–
Chevrolet Infotainment 3 Plus system ³ with 8-inch diagonal HD color touch-screen, includes features listed above, plus enhanced voice recognition, in-vehicle apps, and cloud-connected personalization for select infotainment and vehicle settings (dealer upgradeable to embedded navigation; subscription required for enhanced and connected services after trial period) (LT, RST and LT Trail Boss require available Convenience Package II)	–	–	–	○	○	○	●	–
Chevrolet Infotainment 3 Premium system ⁷ with Connected Navigation, includes Plus system features, plus connected navigation and additional memory for in-vehicle apps (subscription required for enhanced and connected services after trial period) (LTZ requires available LTZ Convenience Package II)	–	–	–	–	–	–	○	●
Bose premium 7-speaker sound system with subwoofer (RST and LT Trail Boss require available Convenience Package II; LTZ requires available LTZ Convenience Package II)	–	–	–	–	○	○	○	●
SiriusXM [®] Radio ⁸ All Access Package with 3-month trial subscription (Custom and Custom Trail Boss require available Infotainment Package; LT, RST and LT Trail Boss require available Convenience Package II)	–	○	○	○	○	○	●	●
HD Radio [®] (LT, RST and LT Trail Boss require available Convenience Package II)	–	–	–	○	○	○	●	●
Chevrolet Connected Access ⁹ with 10 years of standard connectivity, which currently includes Vehicle Diagnostics and Dealer Maintenance Notification (WT, Custom and Custom Trail Boss require available OnStar)	○	○	○	●	●	●	●	●
Available 4G LTE Wi-Fi ^{®10} Hotspot for up to seven devices, includes 1 month or 3 GB of data (whichever comes first) (WT, Custom and Custom Trail Boss require available OnStar)	○	○	○	○	○	○	○	○

¹ Read the vehicle Owner's Manual for important feature limitations and information. ² The system wirelessly charges one PMA- or Qi-compatible mobile device. Some devices require an adaptor or back cover. To check for phone or other device compatibility, visit my.chevrolet.com/learn for details. ³ Chevrolet Infotainment System functionality varies by model. Full functionality requires compatible Bluetooth and smartphone, and USB connectivity for some devices. ⁴ Visit my.chevrolet.com/learn for vehicle and smartphone compatibility. ⁵ Vehicle user interface is a product of Apple and its terms and privacy statements apply. Requires the Android Auto app on Google Play and an Android compatible smartphone running Android 5.0 Lollipop or higher. Data plan rates apply. ⁷ Chevrolet Infotainment System functionality varies by model. Full functionality requires compatible Bluetooth and smartphone, and USB connectivity for some devices. Map coverage available in the United States, Puerto Rico and Canada. ⁸ If you decide to continue service after your trial, the subscription plan you choose will automatically renew thereafter and you will be charged according to your chosen payment method at then-current rates. Fees and taxes apply. To cancel you must call SiriusXM at 1-866-635-2349. See SiriusXM Customer Agreement for complete terms at siriusxm.com. All fees and programming subject to change. ⁹ Standard connectivity available only to original purchaser for 10 years. Connected Access services are subject to change. Does not include emergency or security services. Diagnostic capabilities vary by model and service plan. Message and data rates may apply. Requires contact method on file and enrollment to receive alerts. Not all issues will deliver alerts. Visit onstar.com for details and limitations. ¹⁰ Offer valid after 5/1/18. Service varies with conditions and location. Requires active OnStar service and paid AT&T data plan. Visit onstar.com for details and limitations. Availability subject to change.

AVAILABLE PACKAGES

	WT	CUSTOM	CUSTOM TRAIL BOSS	LT	RST	LT TRAIL BOSS	LTZ	HIGH COUNTRY
MECHANICAL								
Work Truck Package								
Skid plates and high-capacity air filter (not available with Z71 Off-Road Package or Snow Plow Prep Package)	○	–	–	–	–	–	–	–
Snow Plow Prep Package (4x4 models)								
Power feed for backup and roof emergency light, 220-amp alternator, high-capacity air filter, skid plates and heavy-duty front springs (WT requires available 5.3L V8 engine and 17" painted-steel wheels; not available with WT Appearance Package; LT requires available Z71 Off-Road Package and 5.3L V8 engine; LTZ requires 5.3L V8 engine and 18" wheels)	○	–	–	○	–	–	○	–
Trailer Package								
Trailer hitch, 7-pin and 4-pin connectors, and Hitch Guidance¹	○	○	●	○	○	●	●	●
Advanced Trailing Package								
Hitch Guidance with Hitch View; Trailing App and Trailer Tire Pressure Monitoring System (LT and RST require available Convenience Package II and either Trailing Package with trailer brake controller or Max Trailing Package; LT Trail Boss requires available Convenience Package II and trailer brake controller)	–	–	–	○	○	○	●	●
Max Trailing Package								
9.76" rear axle, 3.42 axle ratio, enhanced cooling radiator, revised shock tuning for increased control, heavier-duty rear springs, increased RGAWR² and 220-amp alternator; LT and RST include integrated trailer brake controller (LT and RST require available 5.3L V8 engine, Trailing Package, and automatic locking rear differential; LTZ requires 5.3L V8 engine or available 6.2L V8 engine; High Country requires 4x4 and available 6.2L V8 engine; not available with Z71 Off-Road Package or 22" wheels)	–	–	–	○	○	–	○	○
Trailer Camera Package								
Left and right side mirror cameras and provisions for rear auxiliary trailer camera (LTZ requires available LTZ Convenience Package II and Safety Package; not available with Technology Package)	–	–	–	–	–	–	○	○
Z71 Off-Road Package (4x4 models)								
Off-Road suspension, Hill Descent Control, skid plates, high-capacity air filter, all-terrain tires and Z71 badge; WT includes automatic locking rear differential and 2-speed transfer case; Custom Trail Boss and LT Trail Boss include 2-inch factory lifted suspension and Goodyear Wrangler DuraTrac® off-road tires; LT and RST include automatic locking rear differential, dual-outlet exhaust with polished tips, 18" Bright Silver-painted wheels and 2-speed transfer case; LTZ includes 2-speed transfer case and dual-outlet exhaust with polished tips (High Country does not include Z71 badge) (WT requires available Trailing Package; not available with WT Appearance Package; LT and RST require available 5.3L V8 engine and Trailing Package; not available with Max Trailing Package or 22" wheels; LTZ not available with Max Trailing Package or 22" wheels; High Country not available with High Country Deluxe, High Country Premium Package, Max Trailing Package or 22" wheels)	○	–	●	○	○	●	○	○

1 Read the vehicle Owner's Manual for important feature limitations and information. 2 Rear Gross Axle Weight Rating. 3 If you decide to continue service after your trial, the subscription plan you choose will automatically renew thereafter and you will be charged according to your chosen payment method at then-current rates. Fees and taxes apply. To cancel you must call SiriusXM at 1-866-635-2349. See SiriusXM Customer Agreement for complete terms at siriusxm.com. All fees and programming subject to change. 4 Visit onstar.com for system limitations and details. OnStar plan, working electrical system, cell service and GPS signal required. OnStar links to emergency services. 5 Not compatible with all devices.

● STANDARD ○ AVAILABLE – NOT AVAILABLE

	WT	CUSTOM	CUSTOM TRAIL BOSS	LT	RST	LT TRAIL BOSS	LTZ	HIGH COUNTRY
EXTERIOR								
WT Appearance Package								
Chrome front and rear bumpers and 17" Bright Silver-painted aluminum wheels (not available with Z71 Off-Road Package or Snow Plow Prep Package)	○	–	–	–	–	–	–	–
Z71 Off-Road and Protection Package (4x4 models)								
Z71 Off-Road Package, Chevytec spray-on bedliner and all-weather floor liners with Z71 logo; LT and RST include wheelhouse liners; LTZ includes 20" polished-aluminum wheels (LT and RST require available Trailing Package and 5.3L V8 engine; not available with Max Trailing Package)	–	–	–	○	○	–	○	–
Bed Protection Package								
Wheelhouse liners and Chevytec spray-on bedliner	–	–	–	○	○	○	–	–
INTERIOR								
WT Convenience Package								
Remote Keyless Entry, EZ Lift power lock and release tailgate, deep-tinted windows behind front doors, rear-window defogger, cruise control, and outside heated power-adjustable mirrors; Regular Cab models include power door locks and power windows with express-up/-down for driver and front passenger	○	–	–	–	–	–	–	–
WT Safety Package								
Front and Rear Park Assist; Lane Change Alert with Side Blind Zone Alert; Rear Cross Traffic Alert; chrome front and rear bumpers, high-gloss Black mirror caps and perimeter lighting	○	–	–	–	–	–	–	–
Custom Convenience Package								
Remote vehicle starter system, content-theft alarm, rear-window defogger, LED cargo area lighting in pickup bed, and EZ Lift power lock and release tailgate	–	○	○	–	–	–	–	–
Infotainment Package								
SiriusXM® Radio³ All Access Package with 3-month trial subscription and OnStar⁴	–	○	○	–	–	–	–	–
Custom Value Package								
Custom Convenience Package, Infotainment Package and Trailing Package (requires automatic locking rear differential when ordered with available 5.3L V8 engine)	–	○	–	–	–	–	–	–
LT Convenience Package								
Dual-zone automatic climate control, 10-way power driver-seat adjuster with power lumbar control, heated driver and front outboard passenger seats, leather-wrapped heated steering wheel, manual tilt/telescoping steering column with electric theft-deterrent locking feature, 2 charge-only USB ports⁵ in second row, rear-window defogger, rear 12-volt auxiliary power outlet, Keyless Open and Start, remote vehicle starter system, content-theft alarm, front 40/20/40 split-bench seat with underseat storage, EZ Lift power lock and release tailgate, and LED cargo area lighting in pickup bed (not available with Remote Start Package)	–	–	–	○	–	–	–	–

AVAILABLE PACKAGES (CONTINUED)

	WT	CUSTOM	CUSTOM TRAIL BOSS	LT	RST	LT TRAIL BOSS	LTZ	HIGH COUNTRY
INTERIOR (CONTINUED)								
RST Convenience Package Dual-zone automatic climate control, 10-way power driver-seat adjuster with power lumbar control, heated driver and front outboard passenger seats, leather-wrapped heated steering wheel and manual tilt/telescoping steering column; Crew Cab models include cloth rear seat with storage package	–	–	–	–	○	–	–	–
LT Trail Boss Convenience Package Dual-zone automatic climate control, 10-way power driver-seat adjuster with power lumbar control, heated driver and front outboard passenger seats, heated steering wheel and manual tilt/telescoping steering column; Crew Cab models include cloth rear seat with storage package	–	–	–	–	–	○	–	–
Convenience Package with Bucket Seats Front bucket seats, center console, dual-zone automatic climate control, 10-way power driver-seat adjuster with power lumbar control, heated driver and front passenger seats, heated steering wheel and manual tilt/telescoping steering column; Crew Cab models include cloth rear seat with storage package; RST includes leather-wrapped steering wheel	–	–	–	–	○	○	–	–
Convenience Package II Universal Home Remote, power-sliding rear window, instrument panel-mounted 120-volt power outlet, bed-mounted 120-volt power outlet, Chevrolet Infotainment 3 Plus system ¹ ; 2 USB ports ² ; SD card reader, SiriusXM [®] Radio ³ All Access Package with 3-month trial subscription, HD Radio [®] and HD Rear Vision Camera ⁴ ; Crew Cab LT includes cloth rear seat with storage package; RST and LT Trail Boss include Bose premium 7-speaker sound system (LT requires available LT Convenience Package, Trailing Package and trailer brake controller; RST requires available Convenience Package with Bucket Seats, Trailing Package and trailer brake controller; LT Trail Boss requires available Convenience Package with Bucket Seats and trailer brake controller)	–	–	–	○	○	○	–	–
All-Star Edition Convenience Package, heavy-duty automatic locking rear differential and Trailing Package (not available with Texas Edition on LT)	–	–	–	○	○	–	–	–
Texas Edition LT Convenience Package, heavy-duty automatic locking rear differential, Trailing Package and Texas Edition badging (available only in Texas and surrounding states; not available with All-Star Edition)	–	–	–	○	–	–	–	–
LTZ Convenience Package Heated and ventilated front bucket seats with center console, power-sliding rear window, Universal Home Remote, 2 USB ports ² ; SD card reader, auxiliary input jack, and power-up/-down tailgate with power lock and release; Crew Cab models include heated rear outboard seats	–	–	–	–	–	–	○	–

● STANDARD ○ AVAILABLE – NOT AVAILABLE

	WT	CUSTOM	CUSTOM TRAIL BOSS	LT	RST	LT TRAIL BOSS	LTZ	HIGH COUNTRY
INTERIOR (CONTINUED)								
LTZ Convenience Package II Chevrolet Infotainment 3 Premium system with Connected Navigation ⁵ ; Bose premium 7-speaker sound system and wireless charging ⁶ (requires LTZ Convenience Package)	–	–	–	–	–	–	○	–
LTZ Plus Package LTZ Convenience Package and Safety Package (not available with LTZ Premium Package or LTZ Texas Edition)	–	–	–	–	–	–	○	–
LTZ Premium Package (Crew Cab) LTZ Convenience Package, LTZ Convenience Package II, Safety Package, Safety Package II, power sunroof and 20" polished-finish aluminum wheels (not available with LTZ Plus Package or LTZ Texas Edition)	–	–	–	–	–	–	○	–
LTZ Texas Edition LTZ Convenience Package, Safety Package and Texas Edition badging (available only in Texas and surrounding states; not available with LTZ Plus Package or LTZ Premium Package)	–	–	–	–	–	–	○	–
Safety Package⁴ Front and Rear Park Assist, Lane Change Alert with Side Blind Zone Alert, perimeter lighting and Rear Cross Traffic Alert; LT and LTZ 2WD models include front recovery hooks ⁷ (LT requires available Convenience Package; not available with LTZ Premium Package or LTZ Texas Edition on LTZ)	–	–	–	○	○	○	○	–
Safety Package II⁴ Forward Collision Alert, Lane Keep Assist with Lane Departure Warning, Low Speed Forward Automatic Braking, Front Pedestrian Braking, IntelliBeam headlights, Following Distance Indicator and Safety Alert Seat for driver (LTZ requires available Safety Package)	–	–	–	–	–	–	○	○
High Country Deluxe Safety Package II, power sunroof, 22" polished-aluminum wheels and all-weather floor liners (not available with High Country Premium Package or Z71 Off-Road Package)	–	–	–	–	–	–	–	○
High Country Premium Package Safety Package II, power sunroof, 22" 5-spoke Dark Silver-painted aluminum wheels with chrome inserts and all-weather floor liners (not available with High Country Deluxe, Z71 Off-Road Package or any other 22" wheels)	–	–	–	–	–	–	–	○
Remote Start Package Remote vehicle starter system, content-theft alarm and rear-window defogger (not available with Convenience Package, All-Star Edition or Texas Edition)	–	–	–	○	–	–	–	–
Technology Package HD Surround Vision ⁴ ; Rear Camera Mirror ⁴ and Head-Up Display; LTZ includes Enhanced Driver Information Center (not available with Trailer Camera Package; LTZ requires available Safety Package II)	–	–	–	–	–	–	○	○

¹ Chevrolet Infotainment System functionality varies by model. Full functionality requires compatible Bluetooth and smartphone, and USB connectivity for some devices. ² Not compatible with all devices. ³ If you decide to continue service after your trial, the subscription plan you choose will automatically renew thereafter and you will be charged according to your chosen payment method at then-current rates. Fees and taxes apply. To cancel you must call SiriusXM at 1-866-635-2349. See SiriusXM Customer Agreement for complete terms at siriusxm.com. All fees and programming subject to change. ⁴ Read the vehicle Owner's Manual for important feature limitations and information. ⁵ Chevrolet Infotainment System functionality varies by model. Full functionality requires compatible Bluetooth and smartphone, and USB connectivity for some devices. Map coverage available in the United States, Puerto Rico and Canada. ⁶ The system wirelessly charges one PMA- or Qi-compatible mobile device. Some devices require an adaptor or back cover. To check for phone or other device compatibility, visit my.chevrolet.com/learn for details. ⁷ To avoid the risk of injury, never use recovery hooks to tow a vehicle. See the Owner's Manual for more information.



COMPLETE CARE

Experience Chevrolet Complete Care, a comprehensive coverage, warranty and protection program that comes standard with every new 2019 Chevrolet Silverado lease and purchase. Simply, it is designed around you, to make it easy to keep your Chevrolet like new — and give you the confidence you deserve when you need it most.

YOUR COMPREHENSIVE OWNER BENEFIT PROGRAM.

Includes one maintenance visit (oil and filter change, tire rotation and multi-point vehicle inspection)!

5 years/60,000 miles² of Roadside Assistance³ and Courtesy Transportation.

3-year/36,000-mile² Bumper-to-Bumper Limited Warranty.

5-year/60,000-mile² Powertrain Limited Warranty.

6 years/100,000 miles² of Rust-Through Protection.

Chevrolet Connected Access⁴ with 10 years of standard connectivity, which currently includes Vehicle Diagnostics and Dealer Maintenance Notification.

1 month of Chevrolet Connected Services⁵ and 1 month of OnStar Safety & Security Plan coverage⁵ (available on WT, Custom and Custom Trail Boss models).

DIMENSIONS

	REGULAR CAB	DOUBLE CAB	CREW CAB
Length	229.5"	231.7"	231.7"-241.2"
Wheelbase	139.5"	147.4"	147.4"-157"
Height	75.6"	75.6"-78.4"	75.4"-78.3"
Width	81.1"	81.2"	81.2"

	REGULAR CAB	DOUBLE CAB	CREW CAB
Head Room (front/rear)	43.1"	43"/39.8"	43"/40.1"
Leg Room (front/rear)	44.5"	44.5"/35.2"	44.5"/43.4"
Shoulder Room (front/rear)	66"	66"/64.9"	66"/65.1"

MAXIMUM CAPACITIES

FUEL TANK (APPROXIMATE)	28 gallons (Regular Cab) 24 gallons (Double Cab and Crew Cab) 22 gallons (2WD diesel)
CARGO VOLUME⁶	62.9 cu. ft. (Short Box) 71.7 cu. ft. (Standard Box) 89.1 cu. ft. (Long Box)

OWNERSHIP EXTRAS



CHEVROLET.COM/WARRANTY



CHEVROLET.COM/ACCESSORIES



ONSTAR.COM

(SiriusXM)

SIRIUSXM.COM

NEW VEHICLE LIMITED WARRANTY

3-YEAR/36,000-MILE BUMPER-TO-BUMPER LIMITED WARRANTY Chevrolet will warrant each 2019 Silverado from bumper to bumper for 3 years/36,000 miles (whichever comes first; see dealer for details), with no deductible, from the original in-service date of the vehicle, for warrantable repairs that are required as a result of defects due to materials and/or workmanship. Cosmetic corrosion resulting from defects is also covered under the Bumper-to-Bumper Limited Warranty. In addition, rust-through corrosion will be covered for 6 years/100,000 miles (whichever comes first). See dealer for details.

5-YEAR/60,000-MILE TRANSFERABLE POWERTRAIN LIMITED WARRANTY Every 2019 Silverado comes with a 5-year/60,000-mile (whichever comes first) transferable Powertrain Limited Warranty. 24/7 Roadside Assistance and Courtesy Transportation are also offered for the duration of the Powertrain Limited Warranty. Please see your Chevrolet dealer for details.

¹ Maintenance visit must occur within first year of vehicle delivery. Service visit consists of ACDelco dexos1™ Full Synthetic Oil and Filter Change/Tire Rotation/MPVI. Does not include air filter. See participating dealer for other restrictions and complete details. ² Whichever comes first. See dealer for details. ³ Roadside service provided by Allstate Roadside Services. Limitations apply. ⁴ Offer valid after 5/1/18. Standard connectivity available only to original purchaser for 10 years. Connected Access services are subject to change. Does not include emergency or security services. Diagnostic capabilities vary by model and service plan. Message and data rates may apply. Requires contact method on file and enrollment to receive alerts. Not all issues will deliver alerts. Visit onstar.com for details and limitations. Availability subject to change. ⁵ Connected Services include navigation services and Remote Access Plan, and 1 month or 3 GB of 4G LTE data (whichever comes first) from vehicle delivery date. Data plans offered by AT&T. Services are subject to User Terms and limitations. Certain services require working electrical system, cell service and GPS signal. OnStar links to emergency services. Visit onstar.com for coverage map, details and system limitations. ⁶ Cargo and load capacity limited by weight and distribution.

IMPORTANT INFORMATION

CHEVROLET CONNECTED SERVICES AND ONSTAR Effective May 1, 2018, available Chevrolet Connected Services have changed significantly. While many of the offered services are the same, available plans and pricing are different. Connected vehicle services require a paid connected vehicle services plan or trial and connected hardware, vehicle electrical system (including battery), wireless service and GPS satellite signals to be available and operating for features to function properly. OnStar acts as a link to existing emergency service providers. Visit onstar.com for coverage map, details and system limitations.

CHEVROLET OWNER CENTER (MY.CHEVROLET.COM) Everything you need to know. Anything you need to do. Your Chevrolet Owner Center makes it easy. Create your account today to get the most out of your new vehicle. Get special alerts and offers, schedule service, review your maintenance schedule, and view how-to videos specifically for your vehicle. All online, anytime. Visit the Owner Center today to register or take a tour.

ENGINES Chevrolet products are equipped with engines produced by GM Global Propulsion Systems or other suppliers to GM worldwide. The engines in Chevrolet products may also be used in other GM makes and models.

ASSEMBLY Chevrolet vehicles and their components are assembled or produced by different operating units of General Motors, its subsidiaries or suppliers to GM worldwide. We sometimes find it necessary to produce Chevrolet vehicles with different or differently sourced components than originally scheduled. Since some options may be unavailable when your vehicle is assembled, we suggest you verify that your vehicle includes the equipment you ordered and that, if there were changes, they are acceptable to you.

A NOTE ON CHILD SAFETY Always use seat belts and the correct child restraint for your child's age and size, even with airbags. Even in vehicles equipped with the Passenger Sensing System, children are safer when properly secured in a rear seat in the appropriate infant, child or booster seat. Never place a rear-facing infant restraint in the front seat of any vehicle equipped with an active frontal airbag. See your vehicle Owner's Manual and the child safety seat instructions for more safety information.

IMPORTANT WORDS ABOUT THIS CATALOG We have tried to make this catalog comprehensive and factual. We reserve the right, however, to make changes at any time, without notice, in prices, colors, materials, equipment,

specifications, models and availability. Specifications, dimensions, measurements, ratings and other numbers in this catalog and other printed materials provided at the dealership or affixed to vehicles are approximations based on design and engineering drawings, prototypes and laboratory tests. Your vehicle may differ due to variations in manufacture and equipment. Since some information may have been updated since the time of printing, please check with your Chevrolet dealer for complete details. Chevrolet reserves the right to lengthen or shorten the model year for any product for any reason or to start and end model years at different times. Certain vehicle features may lose their usefulness over time due to obsolescence from technological changes. Unless otherwise noted, all claims based on GM Large Pickup segment and latest available competitive information. Excludes other GM vehicles.

FLEET ORDERS Some standard content may be deleted on fleet orders. See dealer for details.

CHEVROLET OWNERSHIP EXPERIENCE Chevrolet is committed to enhancing the vehicle shopping and ownership experience through a wide array of programs. Visit chevrolet.com to build and price, find a vehicle, request a quote, compare vehicles, find financial tools or track your vehicle order. You'll also find information about 24-hour Roadside Assistance, Courtesy Transportation, Customer Assistance, GM Mobility, safety and current incentives.

CHEVROLET.COM/SAFETY Chevrolet is committed to keeping you and your family safe — from the start of your journey to your destination. That's why every Chevrolet is designed with a comprehensive list of safety and security features to help give you peace of mind.

GMMOBILITY.COM (1-800-323-9935) GM MobilitySM offers financial assistance for eligible adaptive equipment to make automotive travel easier for persons with disabilities or special transportation needs. To learn more about special GM Mobility offers, visit gmmobility.com.

THE BUYPOWER CARD The Chevrolet BuyPower Card — Every purchase you make with the BuyPower Card from Capital One* helps you earn toward an eligible new Chevrolet, Buick, GMC or Cadillac vehicle. There's no limit on the amount you can earn or redeem, and your Earnings don't expire. Visit chevroletbuypowercard.com/catalogs.

* Capital One, N.A. is the issuer of the BuyPower Card. General Motors ("GM") is responsible for the operation and administration of the Earnings program.



[TWITTER.COM/CHEVROLET](https://twitter.com/CHEVROLET)



[YOUTUBE.COM/CHEVROLET](https://youtube.com/CHEVROLET)



[FACEBOOK.COM/CHEVROLET](https://facebook.com/CHEVROLET)



[INSTAGRAM.COM/CHEVROLET](https://instagram.com/CHEVROLET)

GM, the GM logo, Chevrolet, the Chevrolet logo, and the slogans, emblems, vehicle model names, vehicle body designs and other marks appearing in this catalog are the trademarks and/or service marks of General Motors, its subsidiaries, affiliates or licensors. ©2019 OnStar LLC. All rights reserved. Sirius, XM, SiriusXM and all related marks and logos are trademarks of Sirius XM Radio Inc. Bose is a registered trademark and RichBass is a trademark of the Bose Corp. The Bluetooth word mark is a registered trademark owned by Bluetooth SIG, Inc., and any use of such mark by Chevrolet is under license. Goodyear and Wrangler DuraTrac are registered trademarks of the Goodyear Tire & Rubber Company.

©2019 General Motors. All rights reserved. January 2019



ARE YOU A LEGEND?



CHEVY TRUCK LEGENDS. When you've been building pickups for over 100 years, one thing you learn is there's a story behind every truck. And we want to hear yours. Chevy Truck Legends honors our dependable, long-lasting trucks and the people who keep them going strong. If you've owned more than one eligible Chevy truck or driven one over 100,000 miles, you're a legend. At chevytrucklegends.com, discover the benefits that come with membership. Explore the galleries and read about the relationship owners have with their Chevy trucks.



FIND **NEW** **ROADS**™

[CHEVROLET.COM](https://chevrolet.com)