

**CAMARO 2019**

**CHEVROLET**



**CENTURY  
AUTO.CA**



***SOME DECISIONS IN LIFE  
ARE HARDER THAN OTHERS.***



Left to right: Camaro ZL1 Coupe in Summit White, Camaro 3LT Coupe in Red Hot with available 1LE Track Performance Package, Camaro 2SS Coupe in Riverside Blue Metallic (extra-cost colour), Camaro 3LT Convertible in Satin Steel Grey Metallic (extra-cost colour) and Camaro 3LT Coupe in Garnet Red Tintcoat (extra-cost colour). Vehicles shown with available features.

**CENTURY  
AUTO.CA**





Camaro 2SS Coupe in Riverside Blue Metallic  
(extra-cost colour) with available features.

**CENTURY**  
**AUTO.CA**

***CELEBRATED BY  
PEOPLE WHO KNOW.***

Always known for pure driving  
exhilaration and beautiful design,  
Camaro has never been more focused.

Engineers have always given every  
Camaro a unique driving personality.  
Now each Camaro model has a unique  
look, including distinct fascias as well  
as new chiselled tail lamps. No matter  
which model you select, your view of  
performance cars will never be the same.

The critics have taken note. "Camaros  
are among the most sophisticated  
driver's cars in the world," says  
Car and Driver in its 10Best issue for  
2018, the third straight year Camaro  
has made the list. Why follow when  
you can lead?

**FIND *NEW* ROADS™**

LS



Camaro LS Coupe in Shadow Grey Metallic (extra-cost colour).

**THE ESSENTIAL CAMARO.** Each Camaro we build is an original, a true sports car in every respect. LS Coupe, the most affordable Camaro, is no exception, providing the looks, architecture, suspension, refinement and know-how that make people around the world stand up and take notice.

**2.0L TURBO.** LS Coupe is powered by a standard 275-horsepower 2.0L turbo. Its overall weight contributes to a desirable power-to-weight ratio, helping enable 0-96 km/h (0-60 mph) in 5.4 seconds<sup>1</sup> as well as excellent grip and steering response.

**DESIGN ENHANCEMENTS.** LS Coupe benefits from new body lines for 2019 that include front and rear fascias with LED headlamps and chiselled tail lamps plus a bolder, more contoured hood. The toned exterior provides better aerodynamic efficiency.

<sup>1</sup>Based on initial vehicle movement. Coupe models with 6-speed manual transmission.

**CENTURY  
AUTO.CA**



LT



Camaro 3LT Coupe in Garnet Red Tintcoat (extra-cost colour) with available RS Package and other available features.

**CAMARO LT.** Consider the possibilities. LT offers you a wide range of choices such as 20-in. wheels, heated and ventilated leather-appointed front seats, and even an available 3.6L V6 engine. If you want a navigation system<sup>1</sup>, upgrade to 3LT, which also includes the 3.6L V6 engine and other features.

**2019 DESIGN ENHANCEMENTS.** LT gets its own design language with a more toned, sculpted look that includes a new front fascia with LED headlamps, a more contoured hood and a new rear fascia with chiselled LED tail lamps. You can also order a dual-mode performance exhaust system with twin outlets on each side.

**RS PACKAGE ADDS AUTHORITY.** Give your Camaro even more presence with the available RS Package. It includes 20-in. 5-split-spoke Grey-painted wheels, dark-lens LED tail lamps, an RS-specific grille, a deck-lid mounted rear spoiler and Black bowtie emblems.

<sup>1</sup> At time of posting, detailed map coverage is available for most major urban areas of the United States and for certain metropolitan areas of Canada (Vancouver, Calgary, Edmonton, Winnipeg, Windsor, London, Toronto, Ottawa, Montreal, Quebec City and Halifax). Coverage is significantly limited outside these areas.

**CENTURY  
AUTO.CA**



**CONVERTIBLE**

# **THE FORECAST CALLS FOR BLUE SKIES AND INCREASING EUPHORIA.**

Camaro 3LT Convertible in Satin Steel  
Grey Metallic (extra-cost colour)  
with available RS Package and other  
available features.

**DROP THE TOP.** Some might say the ultimate sports car experience requires an open roof and a rush of fresh air. Camaro Convertible is available as an LT, SS or ZL1. For those days when you can't have the top down, the Convertible offers the same beautiful top-up profile as the Coupe.

**FULLY AUTOMATIC OPERATION.** With the push of a single button, a fully automatic soft top disappears beneath the hard tonneau cover — even at speeds up to 50 km/h. You can also remotely lower the top while parked by using the key fob.

**CENTURY  
AUTO.CA**



SS

Camaro 2SS Coupe in Riverside Blue Metallic (extra-cost colour) with available features.



**MOVING PERFORMANCE.** Beneath today's new dome-shaped hood with air extractor, you'll find a 455-horsepower 6.2L V8 engine. It propels you from 0-96 km/h in 4.0 seconds<sup>1</sup> with the available 10-speed automatic transmission, and it can also help save fuel by shutting down unneeded cylinders with available Active Fuel Management.<sup>®</sup>

**ALWAYS IN THE RIGHT GEAR.** The new available 10-speed automatic transmission helps maintain optimum rpm levels for maximum responsiveness on the road. Custom launch control helps keep the rear tires spinning at the correct speed and allows you to adjust both your launch rpm and wheel slippage through the Driver Information Centre.

**ENHANCED COOLING.** Keeping 455 horsepower on track is an enhanced, extra-capacity engine cooling system. Even the standard limited-slip differential gets a special cooler to help maintain optimum operating temperature.

**DUAL-MODE EXHAUST.** This available performance exhaust system lets you open up the valves for a richer, full-bodied exhaust note in Sport and Track driving modes (Track mode is exclusive to LT models with the available 1LE Track Performance Package, SS and ZL1).

<sup>1</sup> Based on initial vehicle movement. Coupe models with available 10-speed automatic transmission.

CENTURY  
AUTOMOTIVE



1

**1. THE NEW FACE OF SS.** Camaro SS is distinguished by a bold new appearance dominated by a blacked-out grille and newly shaped LED headlamps with a light bar, turn signals and daytime running lamps.

**2. CHEVROLET FLOWTIE.** Helping SS inhale even more air is a Chevrolet bowtie emblem with the centre removed, allowing air to pass through it. During early testing, the flowtie helped increase airflow by nearly 3 cubic metres per minute, helping reduce underhood temperatures.



2



3

**3. SS-EXCLUSIVE HOOD.** A beautiful yet functional air extractor is the centrepiece of the SS dome-shaped hood. The air extractor releases excess air from inside the hood to help with cooling and aerodynamics.



ZL1



<sup>1</sup> Based on initial vehicle movement. Coupe models with available 10-speed paddle-shift automatic transmission.

Camaro ZL1 Coupe in Black with available features.

**650 HORSEPOWER.** ZL1 is the reigning king of Camaro performance, thanks to its supercharged V8 engine, making it the most powerful production Camaro ever built. It also boasts a whopping 650 lb.-ft. of torque. Its foundation is the LT4 engine that helps enable a top track speed of 318 km/h and a 0-96 km/h (0-60 mph) time of 3.5 seconds<sup>1</sup>

**MANAGING THE POWER.** The robust ZL1 powertrain is controlled by standard equipment that includes Magnetic Ride Control<sup>®</sup> dampers, an electronically controlled limited-slip differential, Brembo<sup>®</sup> brakes with 6-piston front calipers, and aerodynamic additions such as a platform wing and front and side splitters.

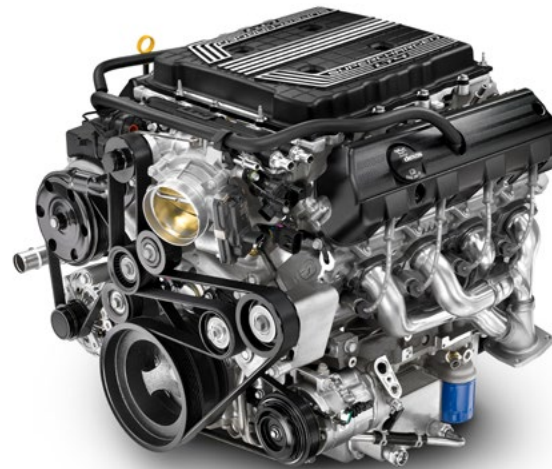
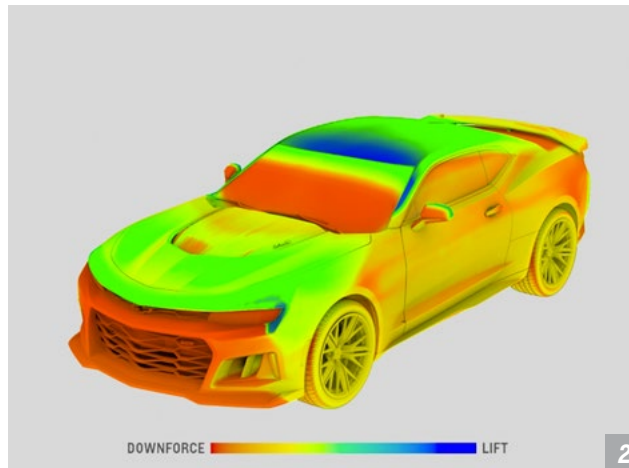
**PUTTING THE POWER DOWN.**

On a closed-course drag strip, custom launch control helps keep the rear tires spinning at the correct speed and allows you to adjust both your launch rpm and wheel slippage through the Driver Information Centre. A line lock feature lets you lock the front wheels to enable the rear wheels to spin, warming the tires for maximum grip.

**SHOCKS THAT READ THE ROAD.** Magnetic Ride Control reads the road and changes damping in just 10-15 milliseconds in shocks filled with a magnetorheological fluid containing minute iron particles. An available Performance Traction Management system helps achieve faster transitions on the track.

**CENTURY  
AUTO.CA**





**1. RECARO® PERFORMANCE SEATS.**

These bolstered front seats are ideal for high-g track driving and feature Jet Black leather appointments, Red accents and sueded microfibre inserts.

**2. SHAPED FOR SPEED.** Every surface of the ZL1 is designed for maximum downforce without compromising speed. Aerodynamic enhancements like a carbon-fibre hood air extractor, an air dam, and a wing-style rear spoiler help reduce lift and increase downforce to keep ZL1 glued to the track.

**3. INTEGRATED SUPERCHARGER.**

The LT4 supercharger is integrated into the intake manifold and fuel rail system for incredibly precise operation.



## 1LE TRACK PERFORMANCE PACKAGES



Left to right: Camaro SS Coupe in Satin Steel Grey Metallic (extra-cost colour), Camaro 3LT Coupe in Red Hot and Camaro ZL1 Coupe in Summit White. All vehicles shown with available 1LE Track Performance Package and other available features.

## THE FAST WAY TO FASTER LAP TIMES.

<sup>1</sup> Do not use summer-only tires in winter conditions, as it would adversely affect vehicle safety, performance and durability. Use only GM-approved tire and wheel combinations. Unapproved combinations may change the vehicle's performance characteristics. For important tire and wheel information, see the Owner's Manual, go to <https://my.gm.ca/chevrolet/en/learn/tires> or your dealer for details.

### THE ULTIMATE TRACK PACKAGE.

It started as an option package to make third-generation Camaro race cars more competitive in showroom stock classes. Since then, 1LE has developed into a comprehensive track performance package that's available on LT, SS and ZL1. You'll recognize 1LE by its distinct Satin Black hood and special spoilers.

**TURBO 1LE.** A 1LE Track Performance Package is now available on LT with the 2.0L turbo engine, providing advantages for drivers who crave lower mass and better weight distribution. The package

includes FE3 suspension components, heavy-duty cooling, Brembo® 4-piston brake calipers, 20-in. Black forged-aluminum wheels and summer-only tires<sup>1</sup>. There's also a unique 3-piece spoiler, an enhanced fuel system for higher cornering loads, a Driver Mode Selector that includes Track Mode, and available RECARO® performance seats.

**V6 1LE.** If you seek more horsepower in the form of a 335-horsepower V6 engine, the V6 1LE is for you. It includes all the basics of the Turbo 1LE plus a dual-mode exhaust system. With its aggressive

suspension tuning, V6 1LE delivers an estimated 0.97 g in cornering grip for consistent lap times.

**SS 1LE.** V8 engine fans will favour the 455-horsepower SS 1LE. The FE4 chassis system includes Magnetic Ride Control dampers, plus special springs and stabilizer bars. With an electronic Limited-Slip Differential, Brembo® 6-piston front brake calipers and Goodyear Eagle® F1 SuperCar® summer-only tires<sup>1</sup>, it exceeds 1 g on the skid pad.

**ZL1 1LE.** The most extreme production Camaro ever, ZL1 1LE is designed for track day setups with the ability to readjust for the ride home. Besides its LT4 supercharged V8 engine, ZL1 1LE includes adjustable Multimatic DSSV™ dampers, stabilizer bars and a carbon-fibre rear wing. Dive planes on the edges of the front fascia help maintain traction and turn-in.

**CENTURY  
AUTO.CA**





## INTERIOR DESIGN

Camaro 3LT interior in Jet Black with available Ceramic White Interior Accent Trim Package and other available features.

### ***PRECISE COMFORT IN EVERY DETAIL.***

Everything comes together seamlessly to provide a better connection with the road. The Camaro cockpit includes premium materials throughout. Drivers will appreciate the flat-bottom steering wheel and perfectly placed gear shifter and dead pedal as well as aggressively

bolstered seats. Leather-trimmed seating surfaces and heated and ventilated front seats are also available. Console air vent trim rings offer simple, space-efficient dials for temperature control. There's also a convenient bank of heat and air conditioning controls located just above the shifter.

### ***RECARO® PERFORMANCE SEATS.***

If you seek a more deeply contoured sport seat, available RECARO® performance seats offer sueded microfibre inserts as well as Jet Black leather appointments and Red accents.

**CENTURY  
AUTO.CA**





1



2



3



4

### **1. RECONFIGURABLE DRIVER**

**INFORMATION CENTRE.** An available 8-in. diagonal reconfigurable gauge cluster allows you to monitor information such as lap time, g-force cornering, fuel usage/range, tire pressure and operating temperature.

### **2. COLOUR HEAD-UP DISPLAY.**

Standard on 2SS and ZL1 and available on 3LT and 1SS, the Head-Up Display projects vehicle speed, rpm, fuel level and other information onto the windshield so you can keep your eyes on the road.

### **3. INTERIOR SPECTRUM LIGHTING.**

Standard on 2SS and ZL1 and available on 3LT, this system provides a band of light that courses around the radio, door trim and cupholders, transitioning between 24 selectable colours.

### **4. A WIDE VIEW BEHIND YOU.**

Standard on 2SS and ZL1<sup>1</sup> is a Rear Camera Mirror<sup>2</sup> that provides a less obstructed view of the area behind your Camaro. When turned on, the mirror provides the driver a wide view without the obstruction of head restraints, C-pillars and rear-seat passengers or cargo.

<sup>1</sup> Not available on models with available 1LE Track Performance Packages. <sup>2</sup> Safety or driver assistance features are no substitute for the driver's responsibility to operate the vehicle in a safe manner. The driver should remain attentive to traffic, surroundings and road conditions at all times. Visibility, weather and road conditions may affect feature performance. Read the vehicle Owner's Manual for more important feature limitations and information.



## TECHNOLOGY



**EXPAND YOUR CONNECTIVITY.** Camaro performance gets a new dimension with a next-generation Chevrolet Infotainment 3 System<sup>1</sup>. This features an available 8-in. diagonal high-definition colour touch-screen on select models. The new system provides Bluetooth<sup>®2</sup> capability for two users as well as the ability to create multiple user profiles.

**Apple CarPlay<sup>®</sup> COMPATIBILITY.** With Apple CarPlay<sup>®3</sup>, you can simply and smartly connect with some of your most used iPhone<sup>®</sup> features, including Maps, Music, Messages and Phone, right on your touch-screen display.

**EASY ANDROID CONNECTION.** With Android Auto<sup>™4</sup> compatibility, you can interact with select smartphone apps. This system takes some of your compatible Android<sup>™</sup> phone's features and lets you access them on the touch-screen display. You can access your phone, text messages, music, navigation and more.

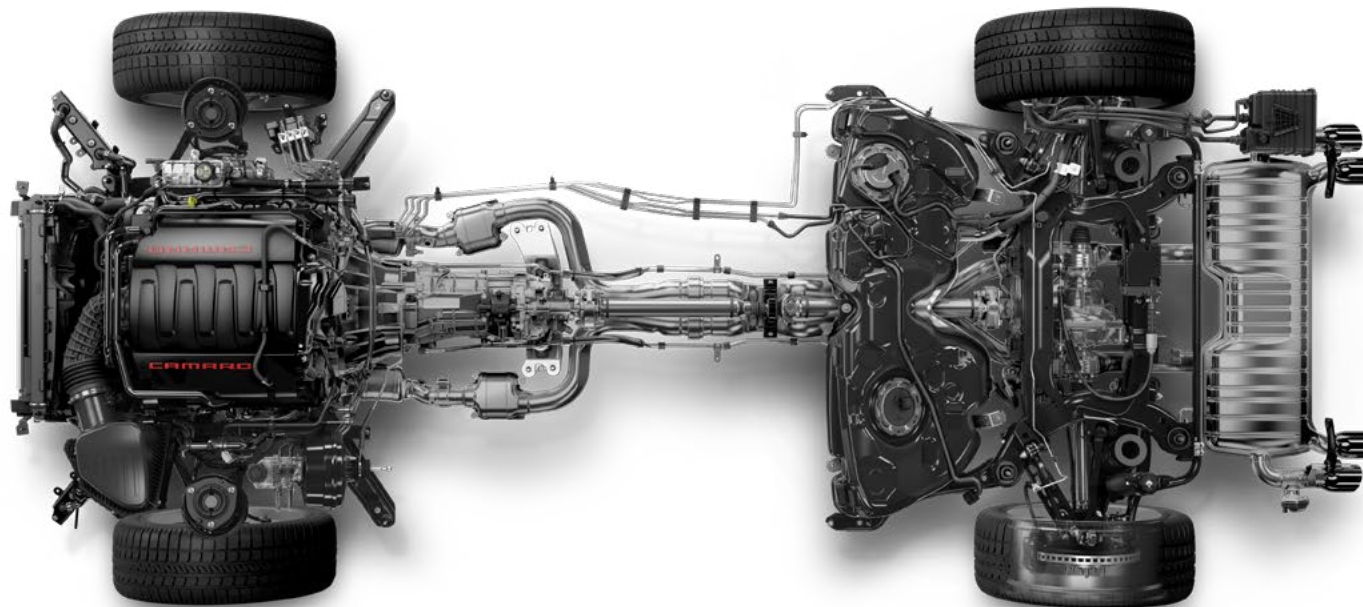
**BOSE PREMIUM SOUND.** A Bose premium 9-speaker system for Coupe (7-speaker system for Convertible) is standard on 3LT, 2SS and ZL1, and is available on 1LT and 2LT.

<sup>1</sup> Chevrolet Infotainment System functionality varies by model. Full functionality requires compatible Bluetooth and smartphone and USB connectivity for some devices. Data plan rates may apply. <sup>2</sup> Visit [mychevrolet.ca](http://mychevrolet.ca) to find out which phones are compatible with the vehicle. <sup>3</sup> Vehicle user interface is a product of Apple and its terms and privacy statements apply. Requires compatible iPhone and data plan rates apply. <sup>4</sup> Vehicle user interface is a product of Google and its terms and privacy statements apply. Requires the Android Auto app on Google Play and an Android compatible smartphone running Android 5.0 Lollipop or higher. Data plan rates apply.

**CENTURY  
AUTO.CA**



## CHASSIS/POWERTRAIN



### **MULTILINK FRONT SUSPENSION.**

Featuring aluminum components and MacPherson struts, this suspension is engineered for precision at every turn.

### **PRECISE ELECTRIC POWER STEERING.**

Elevate road feel and response with Electric Power Steering. You can select up to four drive modes. Quick steering ratios contribute to a nimble, controlled feeling with every turn of the wheel.

**HEAVY-DUTY COOLING AND BRAKE PACKAGE.** Make your Camaro more robust with this available package that includes an external engine oil cooler, an extra-capacity cooling system and 4-piston Brembo® performance front brake calipers on LS and LT. Models equipped with the 2.0L turbo engine get an auxiliary engine oil cooler.

### **STANDARD 6-SPEED MANUAL.**

Experience the joy of manual shifting on the open road. SS and ZL1 also include Active Rev Matching, which anticipates downshifts with throttle blips for smooth, precise shifting. The shift knob is wrapped with dimpled leather or sueded microfibre on ZL1 and SS 1LE for an ideal grip.

### **AVAILABLE 8-SPEED PADDLE-SHIFT AUTOMATIC TRANSMISSION.**

This transmission is available on LS and LT and includes Active Fuel Management on V6 models.

**10-SPEED PADDLE-SHIFT AUTOMATIC TRANSMISSION ON SS.** Camaro SS and ZL1 both offer 10-speed paddle-shift automatic transmissions that deliver fast shifts while featuring a wide band of ratios for optimum power in any gear.

### **BREMBO® 4-WHEEL DISC BRAKES.**

Track-tested 4-piston front and rear calipers are standard on SS. ZL1 includes 6-piston front and 4-piston rear calipers.

### **INDEPENDENT REAR SUSPENSION.**

Tuned specifically for each Camaro model, the independent rear suspension provides a refined ride and responsive driving dynamics.

**MAGNETIC RIDE CONTROL.** Standard on ZL1 and available on SS, this system reads the road every millisecond. It then changes damping in just 10 to 15 milliseconds in shocks filled with magnetorheological fluid containing minute iron particles.

### **ELECTRONIC LIMITED-SLIP**

**DIFFERENTIAL.** Available on SS Coupe and standard on ZL1 Coupe, the electronic Limited-Slip Differential continuously modulates torque split to improve traction and acceleration out of corners, enhancing stability and turn-in responsiveness. A mechanical limited-slip differential is standard on LS, LT and SS.

**DUAL-MODE EXHAUST.** Standard on ZL1 and available on SS and LT with the available 3.6L V6, the dual-mode exhaust provides a more aggressive exhaust note in Sport and Track modes (Track mode is exclusive to LT models with the available 1LE Track Performance Package, SS and ZL1).



## PERFORMANCE

	CAMARO LS/LT/TURBO 1LE		CAMARO LT/V6 1LE		CAMARO SS/SS 1LE		CAMARO ZL1		CAMARO ZL1 1LE EXTREME TRACK PACKAGE	
ENGINE	2.0L turbocharged DOHC I-4 (LTG)		3.6L DOHC V6 (LGX)		6.2L V8 (LT1)		6.2L supercharged V8 (LT4)		6.2L supercharged V8 (LT4)	
DISPLACEMENT, cc (cu. in.)	1998 (122)		3649 (222)		6162 (376)		6162 (376)		6162 (376)	
BORE AND STROKE, mm (in.)	86.00 x 86.00 (3.39 x 3.39)		95.00 x 85.80 (3.74 x 3.37)		103.25 x 92.00 (4.06 x 3.62)		103.25 x 92.00 (4.06 x 3.62)		103.25 x 92.00 (4.06 x 3.62)	
COMPRESSION RATIO	9.5:1		11.5:1		11.5:1		10.0:1		10.0:1	
HORSEPOWER	275 @ 5600 rpm		335 @ 6800 rpm		455 @ 6000 rpm		650 @ 6400 rpm		650 @ 6400 rpm	
TORQUE	295 lb.-ft. @ 3000–4500 rpm		284 lb.-ft. @ 5300 rpm		455 lb.-ft. @ 4400 rpm		650 lb.-ft. @ 3600 rpm		650 lb.-ft. @ 3600 rpm	
REDLINE	7000 rpm		7200 rpm		6500 rpm		6600 rpm		6600 rpm	
TRANSMISSION RATIOS (:1)	MANUAL	AUTOMATIC	MANUAL	AUTOMATIC	MANUAL	AUTOMATIC	MANUAL	AUTOMATIC	MANUAL	
	1	4.12	4.62	4.12	4.62	2.66	4.56	2.29	4.70	2.29
	2	2.62	3.04	2.62	3.04	1.78	2.97	1.61	2.99	1.61
	3	1.81	2.07	1.81	2.07	1.30	2.08	1.21	2.15	1.21
	4	1.30	1.66	1.30	1.66	1.00	1.69	1.00	1.77	1.00
	5	1.00	1.26	1.00	1.26	0.74	1.27	0.82	1.52	0.82
	6	0.80	1.00	0.80	1.00	0.50	1.00	0.54	1.28	0.54
	7	–	0.85	–	0.85	–	0.85	–	1.00	–
	8	–	0.66	–	0.66	–	0.65	–	0.85	–
	9	–	–	–	–	–	–	–	0.69	–
	10	–	–	–	–	–	–	–	0.64	–
AXLE RATIO	3.27:1	3.27:1	3.27:1	2.77:1	3.73:1	2.77:1	3.73:1	2.85:1 (Coupe) <sup>1</sup>	3.73:1	
0 TO 96 km/h <sup>2</sup>	5.5 sec – auto Coupe 5.6 sec – man Convertible 5.7 sec – auto Convertible 5.4 sec – man Coupe, Turbo 1LE		5.2 sec – man Coupe, V6 1LE 5.1 sec – auto Coupe 5.4 sec – man Convertible 5.3 sec – auto Convertible		4.3 sec – man Coupe 4.0 sec – auto Coupe 4.5 sec – man Convertible 4.2 sec – auto Convertible, SS 1LE		3.7 sec – man Coupe 3.5 sec – auto Coupe 3.9 sec – man Convertible 3.7 sec – auto Convertible		3.7 sec	
QUARTER MILE <sup>2</sup>	14.0 sec – man Coupe, Turbo 1LE 14.0 sec – auto Coupe 14.2 sec – man Convertible 14.2 sec – auto Convertible		13.7 sec – man Coupe, V6 1LE 13.5 sec – auto Coupe 13.9 sec – man Convertible 13.7 sec – auto Convertible		12.5 sec – man Coupe, SS 1LE 12.3 sec – auto Coupe 12.7 sec – man Convertible 12.5 sec – auto Convertible		11.8 sec – man Coupe 11.4 sec – auto Coupe 12.0 sec – man Convertible 11.6 sec – auto Convertible		11.8 sec	
TOP TRACK SPEED	240 km/h 238 km/h – Turbo 1LE		240 km/h 250 km/h – V6 1LE		290 km/h – Coupe 282 km/h – SS 1LE 250 km/h – Convertible		318 km/h – auto Coupe		308 km/h	
SKID PAD (MAXIMUM LATERAL ACCELERATION)	.85 g .97 g – Turbo 1LE		.89 g .97 g – V6 1LE		.97 g – Coupe .95 g – Convertible 1.02 g – SS 1LE		1.02 g – Coupe 1.00 g – Convertible		1.10 g	
BRAKING SYSTEM	4-wheel vented disc w/ABS; Available Brembo® 4-piston front calipers <sup>3</sup>		4-wheel vented disc w/ABS; Available Brembo® 4-piston front calipers <sup>3</sup>		4-wheel vented disc w/ABS; Brembo® 4-piston front and rear calipers (SS) Brembo® 6-piston monobloc front and 4-piston rear calipers (SS 1LE)		4-wheel vented disc w/ABS; Brembo® 6-piston monobloc front and 4-piston rear calipers		4-wheel vented disc w/ABS; Brembo® 6-piston monobloc front and 4-piston rear calipers	
BRAKING DISTANCE (96 to 0 km/h)	39.3 m (129 ft.)		34.1 m (112 ft.) – V6 1LE 37.8 m (124 ft.) – Coupe <sup>4</sup> 38.7 m (127 ft.) – Convertible		32.6 m (107 ft.) – SS 1LE 35.7 m (117 ft.) – Coupe 36.6 m (120 ft.) – Convertible		32.6 m (107 ft.) – Coupe 33.5 m (110 ft.) – Convertible		30.8 m (101 ft.)	
CURB WEIGHT, kg (lb.)	1521 (3354) – man Coupe 1515 (3339) – auto Coupe 1654 (3647) – man Convertible 1645 (3627) – auto Convertible		1564 (3448) – man Coupe 1558 (3435) – auto Coupe 1583 (3490) – V6 1LE 1685 (3715) – man Convertible 1682 (3709) – auto Convertible		1672 (3685) – man Coupe 1677 (3697) – auto Coupe 1703 (3754) – 1SS 1LE 1794 (3956) – man Convertible 1800 (3969) – auto Convertible		1761 (3883) – man Coupe 1789 (3944) – auto Coupe 1866 (4113) – man Convertible 1882 (4148) – auto Convertible		1734 (3823)	

<sup>1</sup> Convertible axle ratio is 2.77:1. <sup>2</sup> Based on initial vehicle movement. <sup>3</sup> Included with available Heavy-Duty Cooling and Brake Package or V6 1LE Track Performance Package. <sup>4</sup> With available RS Package.





## SELECT VEHICLE FEATURES

**CAMARO 1LS** Camaro 1LS includes these standard features:

275 hp 2.0L turbo DOHC I-4 engine with Direct Injection and Variable Valve Timing (VVT)
6-speed manual transmission with Hill Start Assist and limited-slip differential
4-wheel disc brakes with ABS
StabiliTrak® Electronic Stability Control System and traction control
4-wheel independent Sport suspension (FE2)
18-in. Silver-painted aluminum wheels (S6E)
LED daytime running lights and headlamps with exterior automatic lamp control
Power exterior mirrors
Rear Vision Camera¹
Keyless Open and Start with extended-range remote keyless entry
Theft-deterrent system – unauthorized entry
Single-zone automatic climate control
Driver Information Centre with compass and colour display
Driver Mode Selector with 3 modes
Power windows, programmable door locks and trunk release
Tilt and telescopic adjustable steering column
Leather-wrapped flat-bottom steering wheel with Bluetooth®,² cruise and audio system controls
Front bucket seats with cloth seating surfaces
Power 8-way driver seat and manual 4-way front passenger seat with power recline
Folding rear seat
Chevrolet Infotainment 3 System³ with 7-in. diagonal colour touch-screen display
Teen Driver technology
Bluetooth®² hands-free phone connectivity and wireless audio streaming
1-month trial of Chevrolet Connected Services and OnStar Safety & Security Plan coverage⁴
Chevrolet Connected Access⁵ with 10 years of standard connectivity, which enables services such as Vehicle Diagnostics⁵ Dealer Maintenance Notification⁶ and more
Built-in 4G LTE Wi-Fi® hotspot⁷; includes 1-month or 3 GB data plan trial (whichever comes first) from vehicle delivery date

**CAMARO 1LT** Camaro 1LT enhances 1LS features with:

18-in. Silver-painted aluminum wheels (REG)
Rear spoiler – stanchion (Convertible only)
Power 6-way front-passenger seat adjuster
Fixed rear seat (Convertible)
SiriusXM® Radio⁸ 3-month trial subscription

**CAMARO 2LT** Camaro 2LT enhances 1LT features with:

Dual-zone automatic climate controls
Heated and ventilated front bucket seats

**CAMARO 3LT** Camaro 3LT enhances 2LT features with:

335 hp 3.6L DOHC V6 engine
Frameless auto-dimming interior rear-view mirror
Chevrolet Infotainment 3 Premium System³ with 8-in. diagonal HD colour touch-screen display and Connected Navigation⁹ (includes HD Rear Vision Camera¹)

**CAMARO 1SS** Camaro 1SS enhances 1LS features with:

455 hp 6.2L V8 engine
Engine oil cooler; Extra-capacity cooling system
Auxiliary engine coolant cooler (Coupe only)
6-speed manual transmission with Active Rev Matching
Transmission oil cooler (Coupe only)
Limited-slip differential cooler (Coupe only)
Brembo® 4-wheel disc brakes with 4-piston calipers and ABS
4-wheel independent Performance suspension (FE3)
20-in. 5-spoke bright Silver-painted aluminum wheels (56S)
Rear spoiler – stanchion (Coupe and Convertible)
Driver Information Centre with reconfigurable 8-in. diagonal colour display
Driver Mode Selector with 4 modes
Chevrolet Infotainment 3 Plus System³ with 8-in. diagonal HD colour touch-screen display

**CAMARO 2SS** Camaro 2SS enhances 1SS and 2LT features with:

Heated, power exterior mirrors with driver-side auto-dimming feature
Forward Collision Alert¹; Lane Change Alert with Side Blind Zone Alert¹
Rear Park Assist¹; Rear Cross Traffic Alert¹
Illuminated doorsill plates
Interior spectrum lighting, up to 24 colours
Interior aluminum accents on doors and shifter
Colour Head-Up Display (HUD) with readouts for g-meter, vehicle speed, engine rpm, selected gear, audio system, high beam indicator, turn signals, exterior temperature, vehicle messages, and turn-by-turn and phone information
Heated steering wheel
Rear Camera Mirror¹ with auto-dimming feature
Driver-side 2-position memory for power driver seat and power exterior rear-view mirrors
9-speaker¹⁰ Bose premium audio system with subwoofer

**CAMARO ZL1** Camaro ZL1 enhances 2SS features with:

650 hp 6.2L supercharged V8 engine
Auxiliary engine coolant cooler (Coupe and Convertible)
Transmission oil cooler (Coupe and Convertible)
Brembo® 4-wheel disc brakes with 6-piston monobloc front calipers and 4-piston rear calipers and ABS
4-wheel independent Performance suspension (FE4)
Magnetic Ride Control suspension; Launch control
Electronic Limited-Slip Differential (Coupe only)
Limited-slip differential cooler (Coupe and Convertible)
20-in. Dark Graphite-painted forged-aluminum wheels (RTQ)
Dual-mode exhaust system
Sport rear spoiler (Coupe only)
RECARO® performance leather-trimmed front bucket seats with sueded microfibre inserts and Red accents
Sport alloy pedals
Sueded microfibre-wrapped steering wheel and shifter
Wireless charging station¹¹

**1** Read the vehicle Owner's Manual for important feature limitations and information. **2** Visit [mychevrolet.ca](http://mychevrolet.ca) to find out which phones are compatible with the vehicle. **3** Chevrolet Infotainment System functionality varies by model. Full functionality requires compatible Bluetooth and smartphone, and USB connectivity for some devices. Data plan rates may apply. **4** Includes navigation services, Remote Access Plan, plus a 3 GB or 1-month (whichever comes first) data plan trial from the vehicle delivery date. Data plan provided by AT&T or its local service provider. Requires vehicle electrical system (including battery), wireless service and GPS satellite signal to be available and operating for features to function properly. Visit [onstar.ca](http://onstar.ca) for more details. Availability subject to change. **5** Standard connectivity available only to original purchaser for 10 years. Connected Access services are subject to change. Does not include emergency or security services. Compatible 4G LTE wireless coverage required. See [onstar.ca](http://onstar.ca) for details and limitations. **6** Capabilities vary by model. Message and data rates may apply. Requires contact method on file and enrollment to receive alerts. Not all issues will deliver alerts or notifications. See [onstar.ca](http://onstar.ca) for details and limitations. **7** Visit [onstar.ca](http://onstar.ca) for vehicle availability, coverage maps, details and system limitations. Services and connectivity vary by model and conditions as well as geographical and technical restrictions. 4G LTE service available in select markets. Requires active connected vehicle services and a data plan to access the vehicle's built-in Wi-Fi hotspot. Accessory Power must be active to use the Wi-Fi hotspot. Data plans provided by AT&T or its local service provider. Credit card is required for purchase. **8** Available in 10 Canadian provinces, 3 territories and the 48 contiguous United States. Subscription sold separately after trial period. If you decide to continue your service at the end of your trial subscription, the plan you choose will automatically renew and bill at then-current rates until you call 1-888-539-7474 to cancel. Other fees and taxes will apply. All fees and programming subject to change. See the Customer Agreement for complete terms at [siriusxm.ca/terms](http://siriusxm.ca/terms). **9** Requires subscription to OnStar Guidance Plan, Premium Access Plan or Navigation Add-On. Connected Navigation and Real-time Points of Interest (POI) only available on properly equipped vehicles. Services are subject to user terms and limitations, and vary by vehicle model. Visit [onstar.ca](http://onstar.ca) for more details. **10** 7-speaker system on Convertible models. **11** The system wirelessly charges one PMA- or Qi-compatible mobile device. Some devices require an adaptor or back cover. To check for phone or other device compatibility, visit [mychevrolet.ca](http://mychevrolet.ca) for details.





## SPECIFICATIONS

	1LS	1LT	2LT	3LT	1SS	2SS	ZL1
<b>SAFETY AND SECURITY</b>							
Airbags <sup>1</sup> Dual-stage frontal and knee for driver and front passenger, includes Passenger Sensing System (Coupe/Convertible); seat-mounted side-impact for driver and front passenger (thorax/head for Convertible); head-curtain for all outboard seating positions (Coupe only)	●	●	●	●	●	●	●
Forward Collision Alert <sup>2</sup>	—	—	—	○ <sup>3</sup>	—	●	●
Lane Change Alert with Side Blind Zone Alert <sup>2</sup>	—	—	—	○ <sup>3</sup>	—	●	●
Rear Park Assist <sup>2</sup>	—	—	—	○ <sup>3</sup>	—	●	●
Rear Cross Traffic Alert <sup>2</sup>	—	—	—	○ <sup>3</sup>	—	●	●
Rear Vision Camera <sup>2</sup>	●	●	●	—	—	—	—
HD Rear Vision Camera <sup>2</sup>	—	○ <sup>4</sup>	○ <sup>4</sup>	●	●	●	●
<b>MECHANICAL</b>							
Brakes – power, 4-wheel disc with ABS	●	●	●	●	●	●	●
– Brembo® 4-piston front calipers	—	○ <sup>5,6</sup>	○ <sup>5,6</sup>	○ <sup>5,6</sup>	—	—	—
– Brembo® 4-piston front and rear calipers	—	—	—	—	●	●	—
– Brembo® 6-piston monobloc front and 4-piston rear calipers	—	—	—	—	○ <sup>5,7</sup>	○ <sup>5,7</sup>	●
Differential – limited-slip	● <sup>8</sup>	● <sup>9</sup>	● <sup>9</sup>	● <sup>9</sup>	●	●	● <sup>10</sup>
– electronic Limited-Slip Differential (eLSD)	—	—	—	—	○ <sup>6,7</sup>	○ <sup>6,7</sup>	● <sup>6</sup>
– cooler	—	○ <sup>5,6</sup>	○ <sup>5,6</sup>	○ <sup>5,6</sup>	● <sup>6</sup>	● <sup>6</sup>	●
Engine – 2.0L turbo DOHC I-4 with VVT and Direct Injection	●	●	●	○	—	—	—
– 3.6L DOHC V6 with VVT and Direct Injection	—	○	○	●	—	—	—
– 6.2L V8 with VVT and Direct Injection	—	—	—	—	●	●	—
– 6.2L supercharged V8 with VVT and Direct Injection	—	—	—	—	—	—	●
– air filter life monitor	●	●	●	●	—	—	—
– auxiliary engine cooling system	—	○ <sup>5,11</sup>	○ <sup>5,11</sup>	○ <sup>5,11</sup>	● <sup>6</sup>	● <sup>6</sup>	●
– extra-capacity cooling system	—	○ <sup>5,6</sup>	○ <sup>5,6</sup>	○ <sup>5,6</sup>	●	●	●
– external engine oil cooler	—	○ <sup>5,6</sup>	○ <sup>5,6</sup>	○ <sup>5,6</sup>	●	●	●
– oil life index monitor	●	●	●	●	●	●	●
Exhaust system – dual-outlet with bright tips	●	●	●	●	●	●	—
– dual-mode	—	○ <sup>12</sup>	○ <sup>12</sup>	○ <sup>12</sup>	○	○	●
Steering – power electric, rack-and-pinion, variable-ratio	●	●	●	●	●	●	●
Suspension – 4-wheel independent, Sport (FE2)	●	●	●	●	—	—	—
– 4-wheel independent, Performance (FE3)	—	○ <sup>6,13</sup>	○ <sup>6,13</sup>	○ <sup>6,13</sup>	●	●	—
– 4-wheel independent, Performance (FE4)	—	—	—	—	○ <sup>6,7</sup>	○ <sup>6,7</sup>	●
– Magnetic Ride Control	—	—	—	—	○	○	●
Transmission – 6-speed manual	●	●	●	●	● <sup>14</sup>	● <sup>14</sup>	● <sup>14</sup>
– 8-speed paddle-shift transmission with auto mode and remote vehicle starter system	○	○	○	○	—	—	—
– 10-speed paddle-shift transmission with auto mode and remote vehicle starter system	—	—	—	—	○	○	○
– transmission oil cooler	○ <sup>15</sup>	○ <sup>15</sup>	○ <sup>15</sup>	○ <sup>15</sup>	● <sup>9</sup>	● <sup>9</sup>	●

● STANDARD ○ AVAILABLE – NOT AVAILABLE

	1LS	1LT	2LT	3LT	1SS	2SS	ZL1
<b>EXTERIOR</b>							
Convertible top – power with rear glass window <sup>10</sup>	—	●	●	●	●	●	●
– tonneau cover <sup>10</sup>	—	●	●	●	●	●	●
Engine hood – exposed carbon-fibre weave	—	—	—	—	—	—	○
Mirrors – power remote control	●	●	●	●	●	—	—
– power remote control, heated with driver-side auto-dimming feature	—	—	—	○ <sup>3</sup>	—	●	●
Spoiler – rear, deck-lid	○ <sup>16</sup>	○ <sup>8,17</sup>	○ <sup>8,17</sup>	○ <sup>8,17</sup>	—	—	—
– rear, deck-lid, stanchion	—	● <sup>10</sup>	● <sup>10</sup>	● <sup>10</sup>	—	●	● <sup>10</sup>
– rear, Sport	—	—	—	—	—	—	● <sup>6</sup>
– rear, blade, Satin Black	—	○ <sup>6,13</sup>	○ <sup>6,13</sup>	○ <sup>6,13</sup>	○ <sup>6,7</sup>	○ <sup>6,7</sup>	—
Stripes – centre stripe <sup>18</sup>	○	○	○	○	○	○	○
– rally stripes <sup>18</sup>	○	○	○	○	○	○	—
Tires – P245/50R18 all-season <sup>†</sup>	●	●	●	●	—	—	—
– P245/50R18 all-season <sup>†</sup> run-flat	—	○ <sup>19</sup>	○ <sup>19</sup>	○ <sup>19</sup>	—	—	—
– P245/40R20 front and P275/35R20 rear summer-only performance <sup>††</sup> run-flat	—	○ <sup>6,13</sup>	○ <sup>6,13</sup>	○ <sup>6,13</sup>	●	●	—
– P285/30R20 front and P305/30R20 rear summer-only performance <sup>††</sup>	—	—	—	—	○ <sup>5,7</sup>	○ <sup>5,7</sup>	●
Wheels, aluminum – 18" Silver-painted (SGE)	●	—	—	—	—	—	—
– 18" Silver-painted (REG)	—	●	●	●	—	—	—
– 20" 5-split-spoke premium Grey-painted machined-face (RQ9)	—	○ <sup>17</sup>	○ <sup>17</sup>	○ <sup>17</sup>	—	—	—
– 20" 5-split-spoke bright Silver-painted (RTJ)	—	○ <sup>20</sup>	○ <sup>20</sup>	○ <sup>20</sup>	—	—	—
– 20" 5-spoke low-gloss Carbon Flash-painted (RTH)	—	○	○	○	—	—	—
– 20" 5-spoke low-gloss Black-painted (56Z)	—	○ <sup>6,13</sup>	○ <sup>6,13</sup>	○ <sup>6,13</sup>	—	—	—
– 20" 5-spoke bright Silver-painted (56S)	—	—	—	—	●	●	—
– 20" 5-split-spoke Grey-painted machined-face (56R)	—	—	—	—	○	○	—
– 20" 5-split-spoke bright Silver-painted (56W)	—	—	—	—	○	○	—
– 20" 5-spoke low-gloss Carbon Flash-painted (56V)	—	—	—	—	○	○	—
– 20" Satin Graphite (RSK)	—	—	—	—	○ <sup>5,7</sup>	○ <sup>5,7</sup>	—
– 20" Dark Graphite-painted (RTQ)	—	—	—	—	—	—	● <sup>6,21</sup>
– 19" Black-painted (PKJ)	—	—	—	—	—	—	○ <sup>6,21</sup>
<b>INTERIOR</b>							
Climate control – automatic, single-zone air conditioning	●	●	—	—	●	—	—
– automatic, dual-zone climate controls	—	—	●	●	—	●	●
Instrumentation – analogue gauges	●	●	●	●	●	●	●
– Driver Information Centre, colour display	●	●	●	●	—	—	—
– Driver Information Centre, enhanced with multi-colour	—	—	—	○ <sup>3</sup>	●	●	●
– 8-in. diagonal reconfigurable display	—	—	—	○ <sup>3</sup>	○ <sup>6,7</sup>	●	●
– Head-Up Display (HUD)	—	—	—	—	—	—	—
– tire pressure monitoring system	●	●	●	●	●	●	●
Interior trim – aluminum accents on doors and shifter cap	—	—	—	○ <sup>3</sup>	—	●	●
– carbon fibre instrument panel moulding	—	—	—	—	—	—	○
Lighting – interior spectrum, 24 colour selections	—	—	—	○ <sup>3</sup>	—	●	●
Sill plates – illuminated	—	—	—	○ <sup>3</sup>	—	●	●


**1** A NOTE ON CHILD SAFETY: Always use seat belts and the correct child restraint for your child's age and size, even with airbags. Even in vehicles equipped with the Passenger Sensing System, children are safer when properly secured in a rear seat in the appropriate infant, child or booster seat. Never place a rear-facing infant restraint in the front seat of any vehicle equipped with an active frontal airbag. See your vehicle Owner's Manual and child safety seat instructions for more safety information.

**2** Read the vehicle Owner's Manual for important feature limitations and information. **3** Included and only available with Convenience and Lighting Package. **4** Included with available Chevrolet Infotainment 3 Plus System radio. **5** Included with available Heavy-Duty Cooling and Brake Package or 1LE Track Performance Package. **6** Coupe model only. **7** Included and only available with SS 1LE Track Performance Package. **8** Requires 6-speed manual transmission. **9** Standard on Coupe model. Included on Convertible model with available automatic transmission. **10** Convertible model only. **11** Included and only available with Heavy-Duty Cooling and Brake Package with 2.0L turbo I-4 engine. **12** Requires available 3.6L V6 engine. **13** Included and only available with 1LE Track Performance Package. **14** Includes Active Rev Matching. **15** Included with available automatic transmission. **16** Included and only available with Black Appearance Package. **17** Included and only available with RS Package. **18** Restrictions apply, please see your dealer for details. **19** Requires available 20" aluminum wheels. **20** Requires available RS Package. **21** Included and only available with 1LE Extreme Track Performance Package. **†** All-season tires may not satisfy winter tire requirements in all regions of the country. Tires specifically designed for severe winter conditions and marked with the "winter tire" symbol (❄️) may be required during certain months or in certain regions. Contact your Provincial, Municipal or local road authority for information regarding which tires are required in your particular area.



SPECIFICATIONS (CONTINUED)

	1LS	1LT	2LT	3LT	1SS	2SS	ZL1
INTERIOR (CONTINUED)							
Steering wheel – flat-bottom design with Bluetooth <sup>†1</sup> cruise and audio system controls	●	●	●	●	●	●	●
– leather-wrapped with leather-wrapped shift knob	●	●	●	●	●	●	–
– sueded microfibre-wrapped with sueded microfibre-wrapped shift knob	–	○ <sup>2,3</sup>	○ <sup>2,3</sup>	○ <sup>2,3</sup>	○ <sup>2,4</sup>	○ <sup>2,4</sup>	–
– heated	–	–	–	○ <sup>5</sup>	–	●	●
Sunroof – power <sup>2</sup>	–	○	○	○	○	○	○
Vehicle starter system – remote	○ <sup>6</sup>	○ <sup>6</sup>	○ <sup>6</sup>	○ <sup>6</sup>	○ <sup>6</sup>	○ <sup>6</sup>	○ <sup>6</sup>
SEATS							
Reclining front bucket seats	●	●	●	●	●	●	–
RECARO <sup>®</sup> performance front bucket seats	–	○ <sup>2,3</sup>	○ <sup>2,3</sup>	○ <sup>2,3</sup>	○	○	●
Cloth seating surfaces	●	●	–	–	●	–	–
Leather-trimmed front seating surfaces	–	–	●	●	–	●	–
Leather-trimmed front seats with sueded microfibre inserts	–	○ <sup>2,3</sup>	○ <sup>2,3</sup>	○ <sup>2,3</sup>	○	○	●
Memory Package – 2-position driver seat and exterior rear-view mirrors	–	–	–	○ <sup>5</sup>	–	●	●
INFOTAINMENT							
Chevrolet Infotainment 3 System <sup>7</sup>	●	●	●	–	–	–	–
Includes 7-in. diagonal colour touch-screen display with AM/FM stereo, Bluetooth <sup>†1</sup> phone hands-free connectivity and wireless audio streaming, and Android Auto <sup>™</sup> and Apple CarPlay <sup>®</sup> compatibility							
Chevrolet Infotainment 3 Plus System <sup>7</sup>	–	○ <sup>10</sup>	○ <sup>10</sup>	–	●	●	●
Includes 8-in. diagonal HD colour touch-screen display with Chevrolet Infotainment 3 System features above with cloud-connected personalization for select infotainment and vehicle settings							
Chevrolet Infotainment 3 Premium System <sup>7</sup>	–	–	–	●	–	○	○
Includes 8-in. diagonal HD colour touch-screen display with Chevrolet Infotainment 3 Plus System features with Connected Navigation <sup>†1</sup>							
Performance Data and Video Recorder	–	–	–	○ <sup>12</sup>	○ <sup>13</sup>	○ <sup>13</sup>	○
6-speaker audio system	●	●	●	–	●	–	–
9-speaker <sup>14</sup> Bose premium audio system	–	○ <sup>10</sup>	○ <sup>10</sup>	●	–	●	●
SiriusXM <sup>®</sup> Radio <sup>15</sup> 3-month trial subscription	–	●	●	●	●	●	●
Wireless charging station <sup>16</sup>	–	–	–	–	–	–	●
AVAILABLE PACKAGES							
Adrenaline Red Interior Accent Trim Package	–	–	–	○ <sup>17</sup>	–	○ <sup>17</sup>	–
Includes Jet Black interior with Adrenaline Red front seat and door inserts and stitching on front seats, steering wheel and centre console							

<sup>1</sup> Visit mychevrolet.ca to find out which phones are compatible with the vehicle. <sup>2</sup> Coupe model only. <sup>3</sup> Included and only available with 1LE Track Performance Package. <sup>4</sup> Included and only available with SS 1LE Track Performance Package. <sup>5</sup> Included and only available with Convenience and Lighting Package. <sup>6</sup> Included with available automatic transmission. Not available with 6-speed manual transmission. <sup>7</sup> Chevrolet Infotainment System functionality varies by model. Full functionality requires compatible Bluetooth and smartphone, and USB connectivity for some devices. Data plan rates may apply. <sup>8</sup> Vehicle user interface is a product of Google and its terms and privacy statements apply. Requires the Android Auto app on Google Play and an Android compatible smartphone running Android 5.0 Lollipop or higher and data plan rates apply. <sup>9</sup> Vehicle user interface is a product of Apple and its terms and privacy statements apply. Requires compatible iPhone and data plan rates apply. <sup>10</sup> Included and only available with Technology Package. Includes HD Rear Vision Camera. <sup>11</sup> Requires subscription to OnStar Guidance Plan, Premium Access Plan or Navigation Add-On. Connected Navigation and Real-time Points of Interest (POI) only available on properly equipped vehicles. Services are subject to user terms and limitations, and vary by vehicle model. Visit onstar.ca for more details. <sup>12</sup> Requires available Convenience and Lighting Package and 1LE Track Performance Package. <sup>13</sup> Requires available SS 1LE Track Performance Package. <sup>14</sup> 7-speaker audio system on Convertible model. <sup>15</sup> Available in 10 Canadian provinces, 3 territories and the 48 contiguous United States. Subscription sold separately after trial period. If you decide to continue your service at the end of your trial subscription, the plan you choose will automatically renew and bill at then-current rates until you call 1-888-539-7474 to cancel. Other fees and taxes will apply. All fees and programming subject to change. See the Customer Agreement for complete terms at siriusxm.ca/terms. <sup>16</sup> The system wirelessly charges one PMA- or Qi-compatible mobile device. Some devices require an adaptor or back cover. To check for phone or other device compatibility, visit mychevrolet.ca for details. <sup>17</sup> Restrictions apply, please see your dealer for details. <sup>18</sup> Requires available RS Package or 20-in. 5-spoke low-gloss Carbon Flash-painted aluminum wheels (RTH). Includes auxiliary engine cooling system with 2.0L turbo I-4 engine. <sup>19</sup> Read the vehicle Owner's Manual for important feature limitations and information. <sup>20</sup> Late availability. <sup>21</sup> Requires 6-speed manual transmission. <sup>22</sup> Rear Camera Mirror replaced with auto-dimming mirror. † All-season tires may not satisfy winter tire requirements in all regions of the country. Tires specifically designed for severe winter conditions and marked with the "winter tire" symbol  may be required during certain months or in certain regions. Contact your Provincial, Municipal or local road authority for information regarding which tires are required in your particular area. †† Do not use summer-only tires in winter conditions, as it would adversely affect vehicle safety, performance and durability. Use only GM-approved tire and wheel combinations. Unapproved combinations may change the vehicle's performance characteristics. For important tire and wheel information, see the Owner's Manual, go to <https://my.gm.ca/chevrolet/en/learn/tires> or your dealer for details.

● STANDARD ○ AVAILABLE – NOT AVAILABLE

	1LS	1LT	2LT	3LT	1SS	2SS	ZL1
AVAILABLE PACKAGES (CONTINUED)							
Ceramic White Interior Accent Trim Package	–	–	–	○ <sup>17</sup>	–	○	–
Includes Jet Black interior with Ceramic White front seat and door inserts and stitching on front seats, steering wheel and centre console							
Heavy-Duty Cooling and Brake Package	–	○ <sup>18</sup>	○ <sup>18</sup>	○ <sup>18</sup>	–	–	–
Includes external engine oil cooler, extra-capacity cooling system and Brembo <sup>®</sup> 4-piston front brake calipers							
RS Package	–	○	○	○	–	–	–
Includes 20" aluminum wheels (RQ9), LED tail lamps and RS-specific grille (Coupe models include rear deck-lid spoiler)							
Convenience and Lighting Package	–	–	–	○	–	–	–
Includes Memory Package, heated steering wheel, multi-colour Driver Information Centre, Head-Up Display (HUD), Rear Park Assist <sup>19</sup> Rear Cross Traffic Alert <sup>19</sup> Lane Change Alert with Side Blind Zone Alert <sup>19</sup> Forward Collision Alert <sup>19</sup> heated power mirrors with driver-side auto-dimming, interior spectrum lighting, illuminated doorsill plates and aluminum accents on doors and shifter cap							
Technology Package	–	○	○	–	–	–	–
Includes Chevrolet Infotainment 3 Plus System <sup>7</sup> with 8-in. diagonal HD colour touch-screen display and 9-speaker <sup>14</sup> Bose premium audio system							
Black Appearance Package <sup>20</sup>	○	○	○	○	○	○	–
Includes Black exterior mirrors and rear spoiler							
1LE Track Performance Package <sup>2,21</sup>	–	○ <sup>17</sup>	○ <sup>17</sup>	○ <sup>17</sup>	–	–	–
Includes external engine oil cooler, extra-capacity cooling system, limited-slip differential cooler, dual-mode exhaust system with 3.6L V6 engine, Performance suspension (FE3), Brembo <sup>®</sup> 4-piston front brake calipers, Satin Black front splitter, engine hood wrap and rear blade spoiler, 20" aluminum wheels (56Z), P245/40R20 front and P275/35R20 rear summer-only performance <sup>††</sup> run-flat tires, RS badging, RS LED tail lamps and sueded microfibre-wrapped steering wheel and shift knob (Includes auxiliary engine cooling system with 2.0L turbo I-4 engine)							
SS 1LE Track Performance Package <sup>2,21</sup>	–	–	–	–	○ <sup>17</sup>	○ <sup>17,22</sup>	–
Includes electronic Limited-Slip Differential (eLSD), dual-mode exhaust system, Performance suspension (FE4), Magnetic Ride Control, Brembo <sup>®</sup> Red monobloc 6-piston front brake calipers, 4-piston rear calipers, Satin Black front splitter, engine hood wrap and rear blade spoiler, 20" aluminum wheels (RSK), P285/30R20 front and P305/30R20 rear summer-only performance tires <sup>†</sup> RECARO <sup>®</sup> performance front bucket seats and sueded microfibre-wrapped steering wheel and shift knob (Includes Head-Up Display (HUD) instrumentation on 1SS)							
ZL1 1LE Extreme Track Performance Package <sup>2,21</sup>	–	–	–	–	–	–	○ <sup>17,22</sup>
Includes Performance suspension (FEA) with Multimatic DSSV <sup>™</sup> dampers, Red brake calipers, Satin Black engine hood wrap, exposed carbon-fibre weave engine hood insert, exposed weave carbon-fibre rear spoiler, low-gloss Black exterior rear-view mirrors, dark tail lamps, front dive planes, unique front splitter with lower DRLs deleted, P305/30R19 front and P325/30R19 rear summer-only performance tires <sup>†</sup> 19" aluminum wheels (PKJ) and fixed rear seat							

## EXTERIOR COLOURS



G16 - Crush<sup>1,2,3</sup>



G7C - Red Hot



G7E - Garnet Red Tintcoat<sup>1</sup>



G9K - Satin Steel Grey Metallic<sup>1</sup>



GAN - Silver Ice Metallic



GAZ - Summit White



GB8 - Mosaic Black Metallic<sup>1</sup>



GB8 - Black

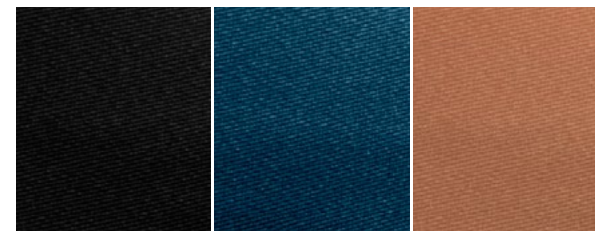


GJI - Shadow Grey Metallic<sup>1</sup>



GKK - Riverside Blue Metallic<sup>1,3</sup>

## CONVERTIBLE TOP COLOURS<sup>4</sup>



Black

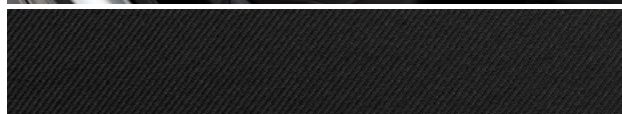
Blue<sup>5</sup>

Kalahari<sup>5</sup>

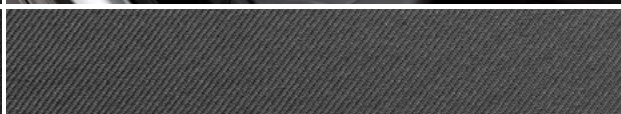
<sup>1</sup> Available at extra cost. <sup>2</sup> Not available with Kalahari interior. <sup>3</sup> Not available with Adrenaline Red interior. <sup>4</sup> Convertible top colour availability varies by exterior/interior compatibility. Please see your dealer for details. <sup>5</sup> Not available on ZL1.



## INTERIOR FABRICS



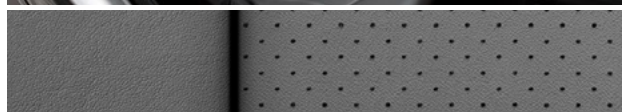
Jet Black Cloth<sup>1</sup>



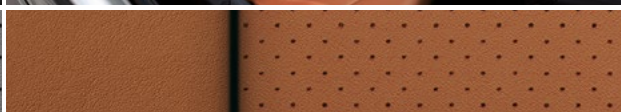
Medium Ash Grey Cloth<sup>1</sup>



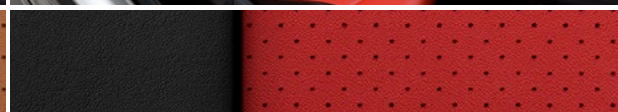
Jet Black Leather Appointments<sup>2</sup>



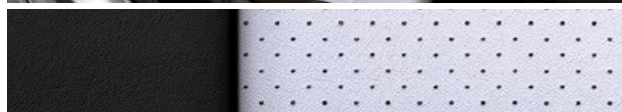
Medium Ash Grey Leather Appointments<sup>2</sup>



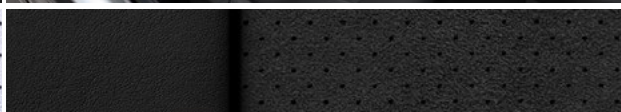
Kalahari Leather Appointments<sup>2</sup>



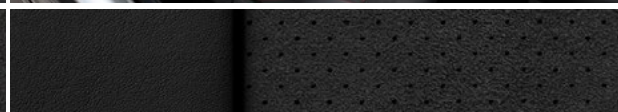
Adrenaline Red Leather Appointments<sup>3</sup>



Ceramic White Leather Appointments<sup>4</sup>



RECARO® Performance Seats with Jet Black Leather Appointments and Sueded Microfibre Inserts<sup>5</sup>



RECARO® Performance Seats with Jet Black Leather Appointments with Sueded Microfibre Inserts and Red Accents<sup>6</sup>

<sup>1</sup> Standard on 1LS, 1LT and 1SS. <sup>2</sup> Standard on 2LT, 3LT and 2SS. <sup>3</sup> Available on 3LT and 2SS. Included and only available with Adrenaline Red Interior Accent Trim Package. <sup>4</sup> Available on 3LT and 2SS. Included and only available with Ceramic White Interior Accent Trim Package. <sup>5</sup> RECARO seats shown available on 1LT, 2LT and 3LT with 1LE Track Performance Package, 1SS and 2SS. <sup>6</sup> Standard on ZL1.



WHEELS



18" x 8.5" front and rear  
5-split-spoke  
Silver-painted aluminum (SGE)  
(Standard on 1LS)



18" x 8.5" front and rear  
Silver-painted aluminum (REG)  
(Standard on 1LT, 2LT and 3LT)



20" x 8.5" front and rear  
5-split-spoke Grey-painted  
machined-face aluminum (RQ9)  
(Available on 1LT, 2LT and 3LT)¹



20" x 8.5" front and rear  
5-split-spoke Bright Silver-painted  
aluminum (RTJ)  
(Available on 1LT, 2LT and 3LT)²



20" x 8.5" front and rear  
5-spoke Carbon Flash-  
painted aluminum (RTH)  
(Available on 1LT, 2LT and 3LT)



20" x 8.5" front and 20" x 9.5" rear  
5-split-spoke Black-painted forged-  
aluminum (56Z)  
(Available on 1LT, 2LT and 3LT)³



20" x 8.5" front and 20" x 9.5" rear  
5-spoke Bright Silver-painted  
aluminum (56S) (Standard on 1SS  
and 2SS)



20" x 8.5" front and 20" x 9.5" rear  
5-split-spoke Grey-painted  
machined-face aluminum (56R)  
(Available on 1SS and 2SS)



20" x 8.5" front and 20" x 9.5" rear  
5-split-spoke Bright Silver-painted  
aluminum (56W)  
(Available on 1SS and 2SS)



20" x 8.5" front and 20" x 9.5" rear  
5-spoke Carbon Flash-painted  
aluminum (56V)  
(Available on 1SS and 2SS)



20" x 10" front and 20" x 11" rear  
5-split-spoke Satin Graphite forged-  
aluminum (RSK)  
(Available on 1SS and 2SS)⁴



20" x 10" front and 20" x 11" rear  
10-split-spoke Dark Graphite-painted  
forged-aluminum (RTQ)  
(Standard on ZL1)



19" x 11" front and 19" x 12" rear  
5-split-spoke low-gloss Black-  
painted forged-aluminum (PKJ)  
(Available on ZL1)⁵

DIMENSIONS



2812 mm (110.7 in.)  
4831 mm (190.2 in.) ZL1  
4783 mm (188.3 in.) LS, LT and SS

EXTERIOR, mm (in.)

Height	1336 (52.6) – ZL1 Convertible
	1344 (52.9) – LT and SS Convertible
	1344 (52.9) – ZL1 Coupe
	1349 (53.1) – LS, LT and SS Coupe
Width	1897 (74.7) – LS, LT and SS
	1905 (75.0) – ZL1
Front Track	1588 (62.5) – LS and LT
	1600 (63.0) – SS
	1610 (63.4) – ZL1
Rear Track	1575 (62.0) – ZL1
	1598 (62.9) – SS
	1618 (63.7) – LS and LT

INTERIOR, mm (in.) front/rear

Headroom	978 <sup>6</sup> /868 (38.5 <sup>6</sup> /34.2)
Legroom	1115/759 (43.9/29.9)
Shoulder Room	1397/1280 (55.0/50.4)

CAPACITIES

Trunk Volume, L (cu. ft.) <sup>7</sup>	
– Coupe	258 (9.1)
– Convertible	207 (7.3)
Fuel Tank, L (imp. gal.)	72 (15.8)

ESTIMATED FUEL CONSUMPTION RATINGS, L / 100 km (mpg)<sup>8</sup>

	City	Highway
2.0L turbo I-4 – man trans – LS and LT	11.9 (24)	7.9 (36)
2.0L turbo I-4 – auto trans – LS and LT	10.8 (26)	7.7 (37)
3.6L V6 – man trans – LT	14.3 (20)	8.8 (32)
3.6L V6 – auto trans – LT	12.3 (23)	8.2 (34)
6.2L V8 – man trans – SS	14.9 (19)	9.9 (29)
6.2L V8 – auto trans – SS	14.5 (19)	8.8 (32)
6.2L supercharged V8 – man trans – ZL1	17.2 (16)	12.0 (24)
6.2L supercharged V8 – auto trans – ZL1	18.3 (15)	11.2 (25)

1 Included and only available with RS Package. 2 Requires available RS Package. 3 Included and only available with 1LE Track Performance Package. 4 Included and only available with SS 1LE Track Performance Package. 5 Included and only available with ZL1 1LE Extreme Track Performance Package. 6 Convertible headroom is 975 mm (38.4 in.). 7 Cargo and load capacity limited by weight and distribution. 8 Fuel consumption estimates based on GM testing in accordance with Government of Canada approved test methods. Refer to vehicles.nrcan.gc.ca for details. Your actual fuel consumption may vary.







## COMPLETE CARE

Experience Chevrolet Complete Care, a comprehensive coverage, warranty and protection program that comes standard with every new 2019 Chevrolet Camaro leased or purchased in Canada. Simply, it is designed around you, to make it easy to keep your Chevrolet like new – and give you the confidence you deserve when you need it most.

### YOUR COMPREHENSIVE OWNER BENEFIT PROGRAM.

2-year/48,000 km<sup>1</sup> Complimentary Oil Changes<sup>2</sup>

3-year/60,000 km<sup>1</sup> Base Warranty Coverage<sup>3</sup>

5-year/100,000 km<sup>1</sup> Powertrain Component Warranty Coverage<sup>3</sup>

5-year/100,000 km<sup>1</sup> Courtesy Transportation<sup>4</sup>

5-year/100,000 km<sup>1</sup> 24/7 Roadside Assistance<sup>4</sup>

6-year/160,000 km<sup>1</sup> Sheet Metal rust-through perforation coverage<sup>3</sup>

8-year/130,000 km<sup>1</sup> coverage<sup>3</sup> on specified major emission components.

1-month trial of Chevrolet Connected Services and OnStar Safety & Security Plan coverage<sup>5</sup>

Chevrolet Connected Access<sup>6</sup> with 10 years of standard connectivity, which enables services such as Vehicle Diagnostics<sup>7</sup>, Dealer Maintenance Notification<sup>7</sup> and more.

### OTHER OWNERSHIP PRIVILEGES AND PROGRAMS<sup>8</sup>

- Chevrolet Protection Plan – the only extended service plan backed by the resources and commitment of General Motors. The Chevrolet Protection Plan may be purchased at the time of sale or subsequently during the Base Warranty Coverage period<sup>9</sup>
- Chevrolet Certified Service – to help your Chevrolet vehicle live up to its performance promise, Chevrolet Certified Service – found exclusively at your Chevrolet dealer – is there. With all the engineering excellence in your vehicle, GM-trained technicians have the expertise to care for all of it.
- Chevrolet Owner Centre – as an owner, take advantage of the Chevrolet Owner Centre. This online owner's destination gives you access to contests, current offers and the latest driving and maintenance tips. Find out more at [mychevrolet.ca](http://mychevrolet.ca).

### TO HELP YOU PURCHASE OR LEASE A NEW VEHICLE

- Purchase Financing and Leasing – on-the-spot financing; see dealer for full details.<sup>10</sup>
- GM Student Bonus Program – students or recent graduates of high school, college or university<sup>10</sup> may be entitled to receive a Student Bonus Vehicle Redemption Allowance of \$500 or \$750<sup>8</sup> (tax inclusive) (purchased vehicle dependant) to use towards the purchase, lease or finance of one eligible new Chevrolet vehicle.
- GM Card<sup>®</sup> – Cardholders may redeem Earnings towards the total purchase price or lease down payment of an eligible new Chevrolet car, truck or crossover. Restrictions and limitations apply. For full program details, visit [gmc card.ca](http://gmc card.ca).

**INFORMATION RESOURCES** You can find more information about these programs from your Chevrolet dealer, or at these information centres:

- The Chevrolet website at [chevrolet.ca](http://chevrolet.ca)
- The GM Customer Care Centre at **1-800-GM-DRIVE (1-800-463-7483 or 1-800-263-3830 for TDD users)**.

**A WORD ABOUT THIS BROCHURE** Some of the equipment shown or described throughout this brochure may be available at extra cost. We have tried to make this brochure comprehensive and factual. We reserve the right, however, to make changes at any time, without notice, in prices, colours, materials, equipment, specifications, models and availability. Specifications, dimensions, measurements, ratings and other numbers in this brochure and other printed materials provided at the dealership or affixed to vehicles are approximates based upon design and engineering drawings and prototypes and laboratory tests. Your vehicle may differ due to variations in manufacture and equipment. Since some information may have been updated since the time of printing, please check with your Chevrolet dealer for complete details. General Motors of Canada Company reserves the right to lengthen or shorten the model year for any product, for any reason, or to start and end model years at different times. Certain vehicle features may lose their usefulness over time due to obsolescence from technological changes. Unless otherwise noted, all claims based on the latest available competitive information. Excludes other GM vehicles.

**ENGINES** Chevrolet products are equipped with engines produced by GM Global Propulsion Systems or other suppliers to GM worldwide. The engines in Chevrolet products may also be used in other GM makes and models.

**ASSEMBLY** Chevrolet vehicles and their components are assembled or produced by different operating units of General Motors, its subsidiaries or suppliers to GM worldwide. We sometimes find it necessary to produce Chevrolet vehicles with different or differently sourced components than originally scheduled. Since some options may be unavailable when your vehicle is assembled, we suggest you verify that your vehicle includes the equipment you ordered and that, if there were changes, they are acceptable to you.

**FLEET ORDERS** Some standard content may be deleted on fleet orders. See dealer for details.

### AN IMPORTANT NOTE ABOUT ALTERATIONS AND WARRANTIES

Installations or alterations to the original equipment vehicle (or chassis) as distributed by General Motors are not covered by the New Vehicle Limited Warranty. The special body company, assembler, equipment installer or upfitter is solely responsible for warranties on the body or equipment and any alterations (or any effect of the alterations) to any of the parts, components, systems or assemblies installed by GM. General Motors is not responsible for the safety or quality of design features, materials or workmanship of any alterations by such suppliers.

**TRADEMARKS** The marks appearing in this brochure including, but not limited to, General Motors, GM, Chevrolet, the Chevrolet emblem, Camaro and their respective logos, emblems, slogans and vehicle model names and body designs; and other marks such as Active Fuel Management, Find New Roads, Magnetic Ride Control, myChevrolet, OnStar, the OnStar emblem, StabiliTrak and ZL1 are trademarks of General Motors LLC and/or General Motors of Canada Company, its subsidiaries, affiliates or licensors. Apple, Apple CarPlay and iPhone are trademarks of Apple Inc., registered in the U.S. and other countries. Bluetooth is a registered trademark of Bluetooth SIG, Inc. Bose is a registered trademark of the Bose Corporation. Brembo is a registered trademark of Brembo S.p.A. Facebook is a registered trademark of Facebook Inc. Goodyear, Eagle and SuperCar are registered trademarks of Goodyear Canada Inc. RECARO is a registered trademark of RECARO GmbH & Co. © 2018 Sirius XM Canada Inc. "SiriusXM," the SiriusXM logo, channel names and logos are registered trademarks of Sirius XM Radio Inc. and are used under license. All rights reserved. Twitter is a trademark of Twitter, Inc. YouTube is a registered trademark and Android and Android Auto are trademarks of Google LLC. Wi-Fi is a registered trademark of Wi-Fi Alliance.

**COPYRIGHT** ©Copyright 2018 General Motors of Canada Company. All rights reserved. All text, images, graphics, and other materials in this brochure are subject to the copyright and other intellectual property rights of General Motors LLC and/or General Motors of Canada Company. These materials may not be reproduced, distributed or modified without the express written permission of General Motors LLC and/or General Motors of Canada Company. December 2018.

<sup>1</sup> Whichever comes first. <sup>2</sup> Limit of four complimentary Lube-Oil-Filter services in total. Fluid top-offs, inspections, tire rotations, wheel alignments and balancing, etc., are not covered. Conditions apply. See dealer for details. <sup>3</sup> Conditions apply. See Warranty Booklet for details. <sup>4</sup> Conditions apply. See Owner's Manual for details. <sup>5</sup> Includes navigation services, Remote Access Plan, plus a 3 GB or 1-month (whichever comes first) data plan trial from the vehicle delivery date. Data plan provided by AT&T or its local service provider. Requires vehicle electrical system (including battery), wireless service and GPS satellite signal to be available and operating for features to function properly. Visit [onstar.ca](http://onstar.ca) for more details. Availability subject to change. <sup>6</sup> Standard connectivity available only to original purchaser for 10 years. Connected Access services are subject to change. Does not include emergency or security services. Compatible 4G LTE wireless coverage required. See [onstar.ca](http://onstar.ca) for details and limitations. <sup>7</sup> Capabilities vary by model. Message and data rates may apply. Requires contact method on file and enrollment to receive alerts. Not all issues will deliver alerts or notifications. See [onstar.ca](http://onstar.ca) for details and limitations. <sup>8</sup> Conditions apply. <sup>9</sup> Please work with your dealer to select the plan that is suitable for your driving needs. Dealers are free to set their own prices. <sup>10</sup> Subject to eligibility.



**FIND NEW ROADS™**

**CHEVROLET.CA**



[TWITTER.COM/CHEVROLETCANADA](https://twitter.com/CHEVROLETCANADA)



[YOUTUBE.COM/CHEVROLETCANADA](https://www.youtube.com/CHEVROLETCANADA)



[FACEBOOK.COM/CHEVROLETCANADA](https://www.facebook.com/CHEVROLETCANADA)



[INSTAGRAM.COM/CHEVROLETCANADA](https://www.instagram.com/CHEVROLETCANADA)

**CENTURY  
AUTO.CA**