

/ THE NEW 2015 SILVERADO HD



**CENTURY
AUTO.CA**



OUR MOST ADVANCED HEAVY-DUTY PICKUP EVER.
THE NEW 2015 SILVERADO HD.

CENTURY
AUTOMOTIVE

Silverado 3500HD Crew Cab Dual Rear Wheel LTZ 4x4 shown in Brownstone Metallic with available equipment.

THE STRENGTH OF EXPERIENCE. **SILVERADO HD.**

You build on proven success. You make your best even better. Introducing the new Silverado HD. Built heavy-duty strong to help get you through the most demanding jobs, the 2015 Silverado HD offers the proven power of our available Duramax 6.6L Turbo-Diesel V8 mated to the legendary Allison® transmission—produced by the makers of military tank transmissions. Or there's the muscle of our standard Vortec 6.0L V8. The new Silverado HD is heavy-duty smart, too. With new exterior and interior designs, plus advanced safety features including the available Safety Alert Driver Seat, the 2015 Silverado 2500HD and 3500HD move the strong tradition of Chevy trucks decisively forward.

Got something serious to tow? Got a mountain to climb? Silverado 3500HD can tow up to 10,523 kg (23,200 lb.)¹—without breaking a sweat. With advanced technology like Trailer Sway Control, Silverado HD is a tow vehicle that combines brute strength with engineering refinement.

¹Requires 3500HD Regular Cab DRW 4x4 with the available Duramax 6.6L Turbo-Diesel V8 engine. Maximum trailer weight ratings are calculated assuming a base vehicle, except for any option(s) necessary to achieve the rating, plus driver. The weight of other optional equipment, passengers and cargo will reduce the maximum trailer weight your vehicle can tow. See your Chevrolet dealer for additional details.



POWER / 5

TOWING / 10

INTERIOR / 12

TECHNOLOGY / 14

SAFETY / 16

CARGO / 17

ACCESSORIES / 21

**CENTURY
AUTO.CA**

NOT JUST STRONG.
HEAVY-DUTY STRONG.

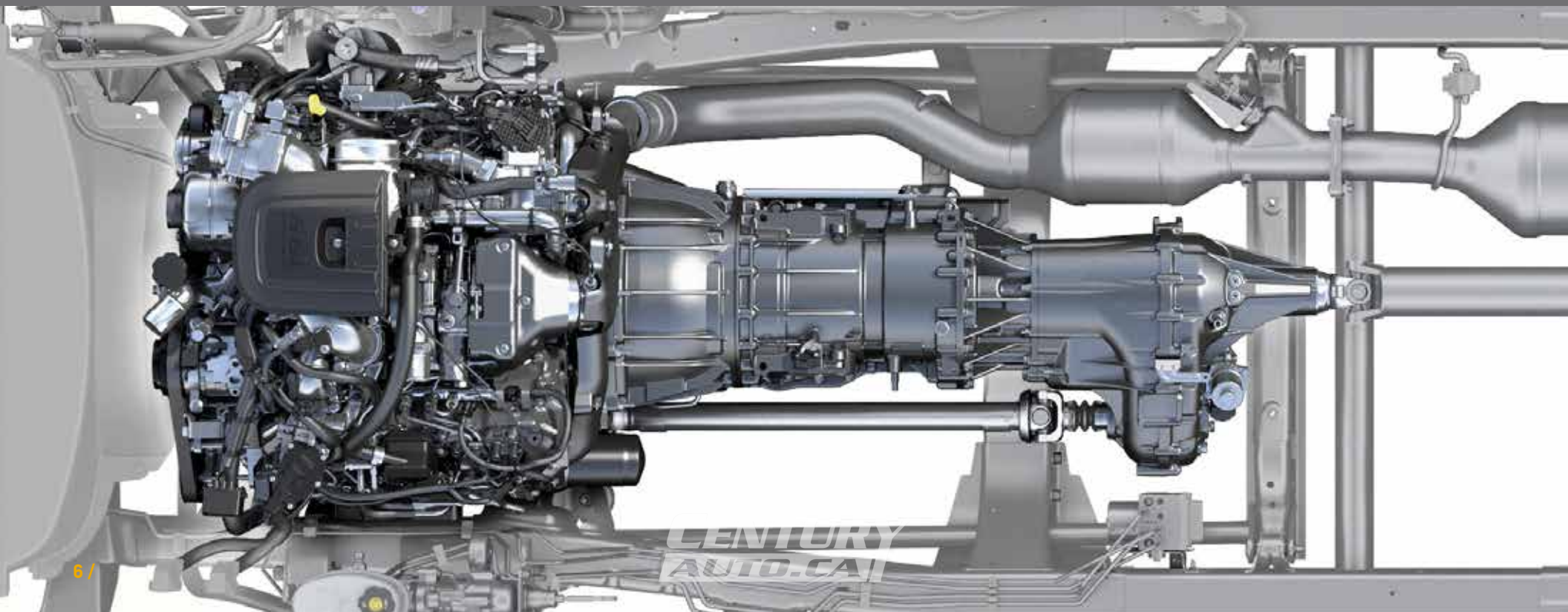


DURAMAX+ALLISON=765 LB-FT TORQUE



If you have heavy-duty demands, you need heavy-duty strength you can count on. How's this for proven power: There are over 1 million Duramax diesels with Allison transmissions on the road today with over 160 billion km (100 billion mi.) of experience. Whether it's towing heavy equipment or hauling massive loads, Silverado HD with the available Duramax 6.6L Turbo-Diesel V8 has been getting it done year after year. In fact, with its 765 lb.-ft. of torque, Silverado 3500HD with the available Duramax Turbo-Diesel engine offers you best-in-class maximum available conventional towing capacity of 8890 kg (19,600 lb.).¹ Power you can trust; that's Silverado HD.

¹Requires 3500HD Crew Cab DRW 4x4 with the available Duramax 6.6L Turbo-Diesel V8 engine. Maximum trailer weight ratings are calculated assuming a base vehicle, except for any option(s) necessary to achieve the rating, plus driver. The weight of other optional equipment, passengers and cargo will reduce the maximum trailer weight your vehicle can tow. See your Chevrolet dealer for additional details. Comparison based on wardsauto.com 2013 Large Pickup segment and latest competitive data available. Excludes other GM vehicles.



IRON WILL.

The small-block V8 has been a dependable workhorse for millions of Chevy truck owners. That heritage continues with the new 2015 Chevy Silverado 2500HD, which comes standard with the Vortec 6.0L V8. Developed for heavy-duty applications, the core features of our Vortec 6.0L are its cast-iron cylinder block, long-skirt design and cross-bolted main bearing caps—three reasons why Silverado HD isn't just tough, it's strong.

Want a combination of power, efficiency and proven durability? The power of our 6.0L V8 builds at a low rpm, where it counts the most in a truck—peak horsepower is

reached by only 5400 rpm, while peak torque occurs at only 4200 rpm. Got a stump to pull or a trailer to tow? The torque curve of the 6.0L is broad and flat, with approximately 90 percent of peak torque available at only 2000 rpm.

Paired in the new Silverado HD, the Vortec 6.0L and 6-speed automatic transmission combine to deliver a maximum towing capacity of up to 6713 kg (14,800 lb.).¹

There's also a bi-fuel version of the Silverado 2500HD that seamlessly switches between gasoline and

Compressed Natural Gas (CNG). And since this is a Silverado, you know it's got the power and performance to get the job done. The entire gaseous fuel system meets Chevrolet's strict quality, durability and safety testing and is covered under the powertrain warranty.² The bi-fuel Silverado 2500HD is now available in Double Cab and Crew Cab configurations as well as standard and long box, with either two- or four-wheel drive.

¹Requires 2500HD Regular Cab 4x2 with standard Vortec 6.0L V8 engine. Maximum trailer weight ratings are calculated assuming a base vehicle, except for any option(s) necessary to achieve the ratings, plus driver. The weight of other optional equipment, passengers and cargo will reduce the maximum trailer weight your vehicle can tow. See your Chevrolet dealer for additional details. ²5 years/160,000 km (whichever comes first). See your dealer for limited warranty details.



VORTEC 6.0L V8



**FUTURE
AVAILABILITY**

AVAILABLE BI-FUEL WITH CNG

HEAVY DUTY WITHOUT THE HEAVY WEIGHT. /

Weight robs a truck of its power and efficiency. In Silverado HD, the strategic use of high-strength steels, aluminum and other premium materials enabled engineers to create a new Silverado that is stronger and more capable than previous models.

A / FULLY BOXED FRAME The HD frame is engineered using high-strength steel for the fully boxed frame rails. The front frame segments are hydroformed, a process that minimizes weight without sacrificing strength, so Silverado HD has the strength and stiffness to tackle the toughest heavy-duty demands. Mounted to the rear frame are 76 mm (3")-wide leaf springs that help achieve a best-in-class maximum

payload rating of 3345 kg (7374 lb.) on the Regular Cab model.¹ The torsion-bar front suspension helps create Front Gross Axle Weight Ratings of up to 2722 kg (6000 lb.).²

B / HIGH-STRENGTH STEEL Its frame is highly refined, precisely tuned to help squelch vibration for a smoother ride and confident handling. And to help create a quiet cab, about two-thirds of the HD's cab structure is made from high-strength steels, including the pillars, roof rails and rocker panels. It's a fortress of strength that rests on hydraulic body mounts that enhance the smooth, comfortable ride.

C / ROLLED, NOT STAMPED Even the HD pickup bed benefits from tougher steels. HD features a roll-formed steel pickup box, which is lighter, stronger and more durable than traditional stamped-steel boxes used by major competitors.

PROOF IS IN THE POUNDING To help validate the design and materials for the new Silverado HD, the trucks underwent more than 9 million km (6 million mi.) of durability testing on proving grounds and tough test roads. What about the real world? Final on-road testing in excess of 11 million km (7 million mi.) brought total test kilometres to almost 21 million (13 million mi.).

¹Requires 3500HD Regular Cab 4x2 DRW with standard Vortec 6.0L V8 engine. Maximum payload capacity includes weight of driver, passengers, optional equipment and cargo; payload capacities are approximate. Comparison based on wardsauto.com 2013 Large Pickup segment and latest competitive data available. Excludes other GM vehicles. ²Requires available Snow Plow Prep Package. ³Maximum payload capacity includes weight of driver, passengers, optional equipment and cargo; payload capacities are approximate.



Silverado 2500HD Crew Cab Standard Box LTZ 4x4 shown in Deep Ruby Metallic with a maximum payload rating of 1267 kg (2793 lb.).³

**GRADE IT
ON A GRADE.
THE STEEPER,
THE BETTER.**

**BRUTE FORCE+TECHNOLOGICAL FINESSE=
THE ULTIMATE TOWING MACHINE.**



**CENTURY
AUTOMOTIVE**

TOWING. THE SMARTER WAY.

HILL START ASSIST To give you extra time to switch from the brake pedal to the accelerator without rolling back, Hill Start Assist holds the brakes momentarily or until you press the accelerator.

A / DIESEL EXHAUST BRAKE SYSTEM The available Exhaust Brake System works with the Allison transmission's Tow/Haul mode and Automatic Grade Braking features to help reduce the amount of conventional braking needed while towing or travelling downhill.

B / TRAILER BRAKE CONTROLLER For control and easy monitoring of your trailer brakes, Silverado HD offers an available integrated trailer brake controller. It's located in easy reach of the steering wheel for quick adjustments.

C / TOW/HAUL MODE To accelerate when trailering or hauling heavy loads, Tow/Haul mode raises transmission upshift points. It also raises downshift points using engine compression to help slow your Silverado HD instead of merely braking.

D / REAR VISION CAMERA The centre screen serves as your monitor for the available Rear Vision Camera. Its dynamic grid lines help when backing up or hitching a trailer.

TRAILER SWAY CONTROL To help keep both Silverado HD and your trailer heading in the same direction automatically, sensors help detect a swaying trailer. Trailer Sway Control then helps bring it back in line by applying both the truck's and the trailer's brakes (when properly equipped).



A / AVAILABLE DIESEL EXHAUST BRAKE SYSTEM



B / AVAILABLE TRAILER BRAKE CONTROLLER



C / TOW/HAUL MODE



D / AVAILABLE REAR VISION CAMERA

CENTURY
AUTO.CA



YEAH, IT'S STILL A TRUCK.

12 / Interior

**CENTURY
AUTO.CA**

Silverado 2500HD Crew Cab LTZ shown in Cocoa/Dune with available equipment.



IT DOES THE *HEAVY LIFTING* IN HERE, TOO.

**CENTURY
AUTO.CA**

PUSH A BUTTON. SAY THE WORD. *IT KNOWS WHO'S BOSS.* /



A / DRIVER INFORMATION CENTRE Silverado HD's new available 107 mm (4.2") diagonal colour Driver Information Centre (DIC) lets you choose from a menu of display themes to select what information you see and how you see it.

B / USB AND 12V PLUG-INS Depending on the model you choose, you'll never be far from a convenient power supply: up to six USB ports,¹ four auxiliary power outlets and a new available 110-volt outlet keep first- and second-row passengers connected and powered up.

C / THE COMFORT OF SECURITY The 2015 Silverado HD is the first heavy-duty full-size pickup to offer all three of these advanced safety features: Forward Collision Alert, Lane Departure Warning and the Safety Alert Driver Seat. Together, they help alert the Silverado HD driver to potential hazards on the road.

D / A SMARTER CONNECTION Silverado HD's new available 203 mm (8") diagonal LCD centre touch-screen is your connection to Chevy MyLink.² It's your seamless connection to digital content. From the contacts and music playlists you've got stored in your smartphone, to a selection of on-screen apps like Stitcher SmartRadio,³ the screen provides instant access to the information and entertainment you want. The available MyLink with Navigation System⁴ adds even more advanced intelligence.

E / FINGERTIP CONTROLS Keep your eyes on the road while activating available Bluetooth^{®1} phone functions using steering-wheel-mounted controls. The system links your compatible device to Silverado's audio system. You can also play audio, change songs, set the cruise control and activate the available heated steering wheel.

F / CENTRE CONSOLE FILE CABINET Your truck is your second office—and maybe your first. With features like an available centre console storage compartment designed to double as a file cabinet, you'll have a place to keep everything organized when you're on the go.



A / DRIVER INFORMATION CENTRE



B / USB AND 12V PLUG-INS



C / SAFETY ALERT DRIVER SEAT



D / COLOUR TOUCH RADIO



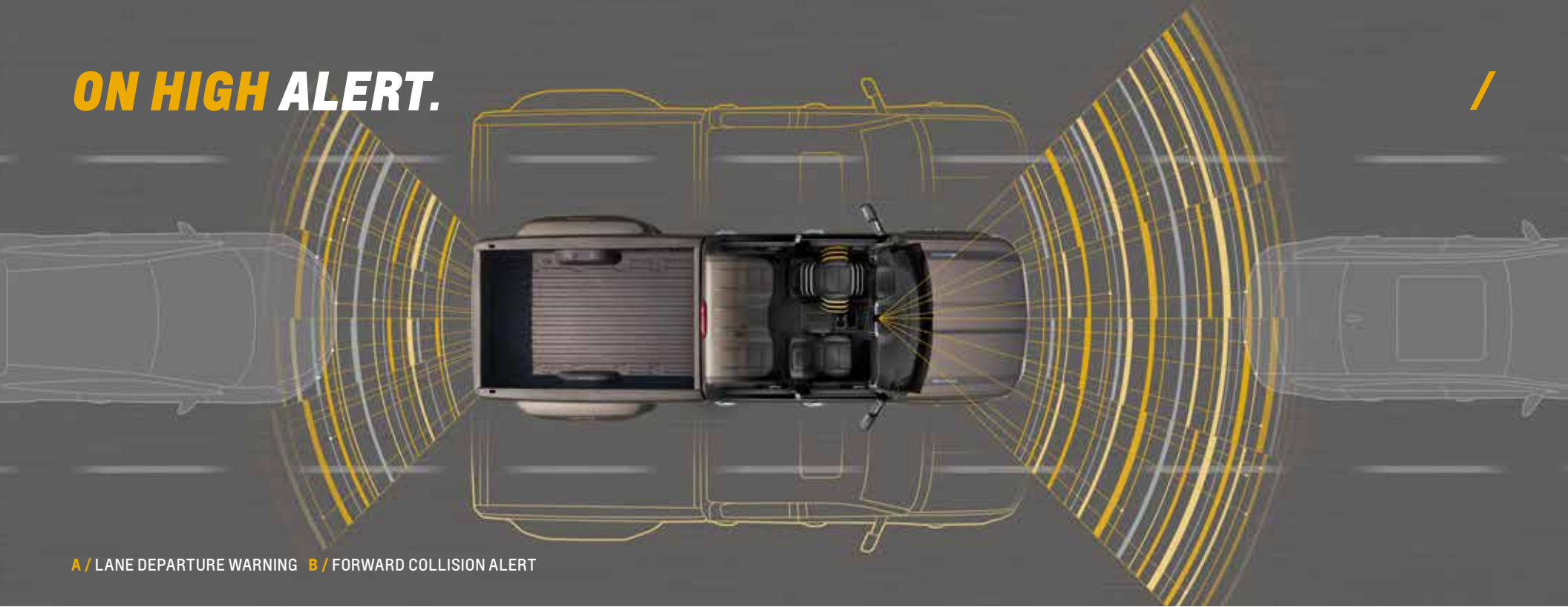
E / FINGERTIP CONTROLS



F / CENTRE CONSOLE FILE CABINET

¹Not compatible with all devices. ²Full functionality requires compatible Bluetooth and smartphone, and USB connectivity for some devices. Visit mylink.chevrolet.ca for details. ³Data plan rates apply. ⁴Full functionality requires compatible Bluetooth and smartphone, and USB connectivity for some devices. Visit mylink.chevrolet.ca for details. At time of printing, detailed map coverage is available for most major urban areas of the United States and for certain metropolitan areas of Canada (Vancouver, Calgary, Edmonton, Winnipeg, Windsor, London, Toronto, Ottawa, Montreal, Quebec City and Halifax). Coverage is significantly limited outside these areas.

ON HIGH ALERT.



A / LANE DEPARTURE WARNING **B /** FORWARD COLLISION ALERT

At Chevrolet, we believe safety is as important to truck buyers as it is to car buyers. That is why the new Silverado HD sets a benchmark for pickup truck safety. Unlike its competitors, Silverado offers the new Driver Alert Package. The package includes Forward Collision Alert (FCA) to warn you when you're rapidly approaching another vehicle and a collision is imminent, Lane Departure Warning (LDW) to alert you if you wander from your lane without using your turn signal, the new Safety Alert Driver Seat that uses vibrations in the seat cushions to signal the direction of a potential hazard and Front and Rear Park Assist to help ease you into or out of tight spaces.

SAFETY ALERT DRIVER SEAT The available Safety Alert Driver Seat helps warn the driver of potential traffic danger using directional vibration pulses from the seat cushion. This warning approach is tied to all of the on-board crash avoidance systems.

A / LANE DEPARTURE WARNING This available technology alerts the driver when Silverado HD drifts over a lane line without signalling while travelling at least 56 km/h (35 mph).

B / FORWARD COLLISION ALERT To help prevent frontal crashes, this available technology alerts drivers when they are closing in too quickly on a vehicle ahead.

The warning gives the driver critical additional time to react and potentially avoid a crash.

ABS BRAKES Four-wheel, four-channel, antilock disc brakes (ABS) help provide straight, more controlled stops by preventing wheel lock-up in most road conditions.

REAR VISION CAMERA When Silverado HD's transmission is in reverse, the available Rear Vision Camera with dynamic grid lines allows the driver to view objects directly behind the vehicle via the available 203 mm (8") diagonal screen in the centre stack, allowing for easier parking and reversing manoeuvres.

C / SIX AVAILABLE AIR BAGS Silverado HD offers up to six air bags¹ and a 360-degree sensor system, including single-stage frontal air bags, head-curtain side-impact air bags with rollover protection and seat-mounted side-impact air bags.

ONSTAR The security of OnStar² is available on Silverado HD. In the event of a crash, OnStar uses GPS and cellular phone technology to automatically call for help. OnStar service also includes the RemoteLink³ mobile app, which offers vehicle information and OnStar services via the customer's smartphone.

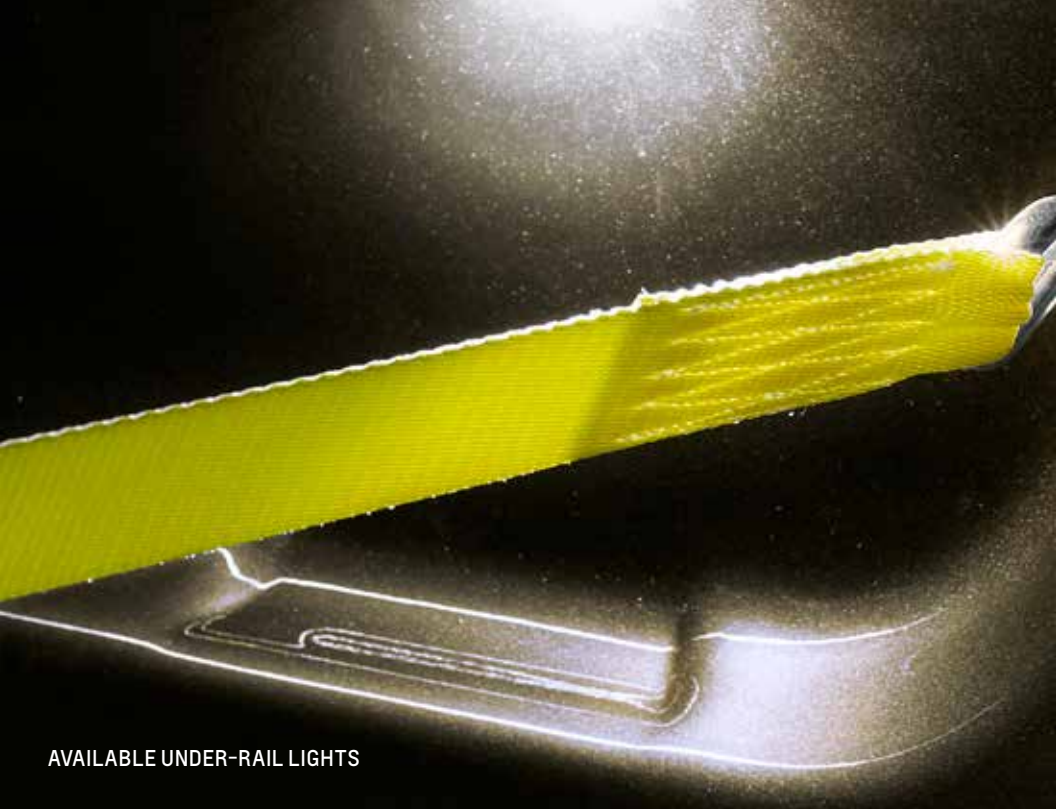
¹Always use safety belts and the correct restraint for your child's age and size. Even in vehicles equipped with the Passenger Sensing System, children are safer when properly secured in a rear seat in the appropriate infant, child or booster seat. Never place a rear-facing infant restraint in the front seat of any vehicle equipped with an active frontal air bag. See the Owner's Manual and child safety seat instructions for more safety information. ²Visit onstar.ca for coverage map, details and system limitations. Services vary by model and conditions. OnStar acts as a link to existing emergency service providers. Not all vehicles may transmit all crash data. After complimentary trial period, an active OnStar service plan is required. ³Available on select Apple,® Android,® BlackBerry® and Windows® devices. Services vary by device, vehicle and conditions. Requires active OnStar service plan.

EVERY PAYLOAD IS A PAYDAY.

Silverado HD offers the most innovative cargo box in its class¹ thanks to smart features that let you customize the way you secure cargo. Four standard lower tie-downs and optional upper tie-downs can be attached in numerous locations, while integrated pocket handgrips and the new CornerStep rear bumper make it easier to climb into the box. The available EZ-Lift and Lower Tailgate opens without a thud and can be closed with one hand. Available LEDs under the bed rails make it easier to see items in the bed, even with a tonneau cover on. Standard tailgate cap bed rail protectors help avoid damage.



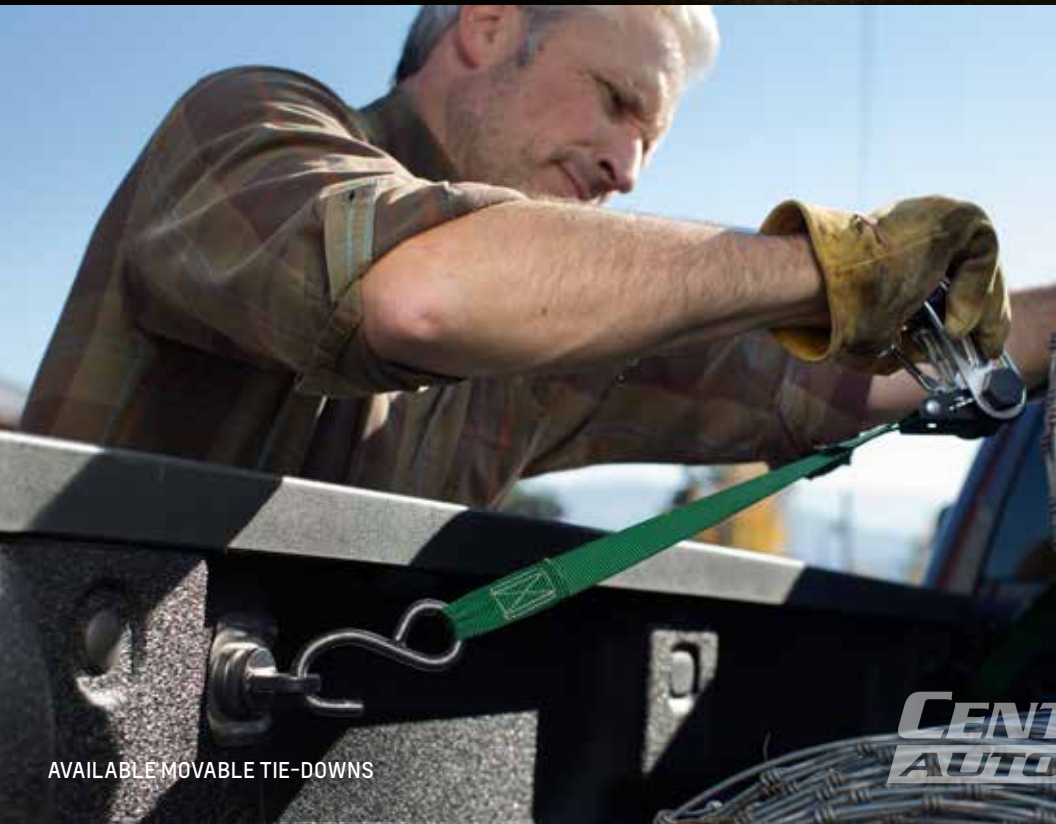
¹Comparison based on wardsauto.com 2013 Large Pickup segment and latest competitive data available. Excludes other GM vehicles.



AVAILABLE UNDER-RAIL LIGHTS



HANDGRIPS



AVAILABLE MOVABLE TIE-DOWNS



CENTURY
AUTO CORNERSTEP REAR BUMPER

Z71 OFF-ROAD. GAME ON. /

The available Z71 Off-Road Package features suspension upgrades designed for rugged off-road terrain, including an Underbody Skid Plate Package, automatic locking rear differential (on 2500HD models), all-terrain tires and Hill Descent Control.



CENTURY
AUTOMOTIVE

Inside and out, the Z71 has rugged looks, with a unique Z71 gauge cluster and grille. Custom Z71 graphics on the instrument cluster and pickup box, as well as brushed-aluminum sill plates and special interior accents, make this truck not only tough but stylish.



CENTURY
AUTOMOTIVE

ACCESSORIES **DONE RIGHT.**



Silverado Accessories let you customize your truck. Simplify getting into and out of your Silverado with either 102 mm (4") or 152 mm (6") assist steps. A retractable side bed step provides another entry point for accessing the cargo bed. Preserve your Silverado's appearance with a set of splash guards that help deflect mud and rocks. Chrome exhaust tips, a chrome fuel door and chrome recovery hooks provide nice visual accents that add a finishing touch to your customization. Ask your Chevrolet dealer about the full range of accessories for your Silverado.

A / RECOVERY HOOKS Add functionality and enhance the appearance of your Silverado with chrome recovery hooks.

B / ASSIST STEPS Make it easier to get into and out of your Silverado with these stylish steps. The 152 mm (6") rectangular steps are aluminum and the 102 mm (4") round steps are stainless steel. Both are rust-resistant and available in either chrome or black powder coat.

C / STATIONARY TOOLBOX This durable, diamond-patterned aluminum toolbox handles up to 113 kg (250 lb.).¹ It features a removable sliding tray with rubber mat, dual gas shocks for smooth operation and a one-touch latch. It mounts securely to the bed without drilling and has the Chevy Bowtie logo. Not available with bed rug or any tonneau cover.

SOFT TONNEAU COVER A roll-up soft folding tonneau with integrated cross bows shields cargo and allows full access to the bed. Soft and hard folding are also available. Not shown.

PREMIUM ALL-WEATHER FLOOR MATS

Premium all-weather floor mats are designed specifically for your Silverado to help collect rain, mud, snow and debris. Not shown.

See chevrolet.ca to learn about additional options, which are updated regularly. Or talk to your local Chevy dealer.

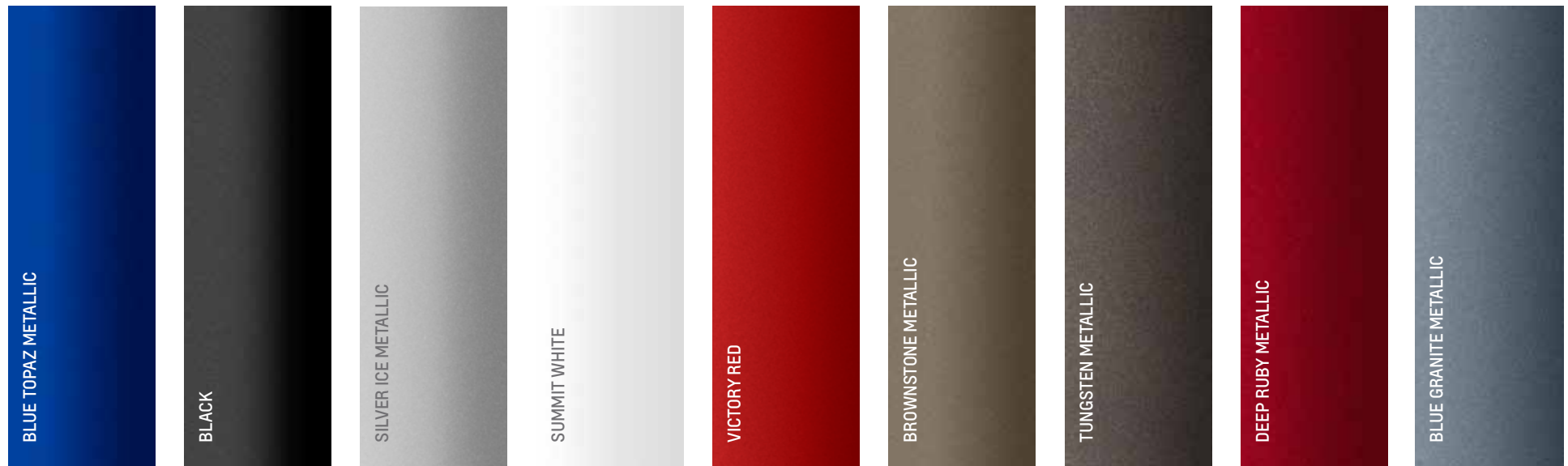
¹Cargo and load capacity limited by weight and distribution.



**CENTURY
AUTOMOTIVE**

Silverado 2500HD Double Cab LT 4x4 shown in Tungsten Metallic with Z71 Off-Road Package (left) and Silverado 3500HD Crew Cab LTZ 4x4 shown in Brownstone Metallic (right), both with available equipment.

EXTERIOR COLOURS



WHEELS



17" PAINTED
STEEL (PYN)
STANDARD ON
2500HD WT



18" PAINTED
STEEL (PYT)
STANDARD ON
3500HD SRW WT;
AVAILABLE ON
2500HD WT



17" MACHINED
ALUMINUM (PYQ)
STANDARD ON
2500HD LT;
AVAILABLE ON
2500HD WT



18" POLISHED
FORGED
ALUMINUM (PYV)
STANDARD ON
2500HD LTZ AND
3500HD SRW LT
AND LTZ;
AVAILABLE ON
2500HD LT



20" POLISHED FORGED
ALUMINUM (PYS)
AVAILABLE ON
2500HD LT AND LTZ



17" PAINTED STEEL
(PYW)
STANDARD ON
3500HD DRW WT



17" STEEL WITH
CHROME OVERLAY
(P06)
STANDARD ON 3500HD
DRW LT AND LTZ



17" POLISHED
FORGED ALUMINUM
(RS7)
AVAILABLE ON
3500HD DRW LT
AND LTZ, CREW
CAB ONLY

For more information, see chevrolet.ca.

INTERIOR COLOURS & SEATING SURFACES

VINYL



JET BLACK/DARK ASH
STANDARD ON WT

CLOTH



JET BLACK/DARK ASH CLOTH
AVAILABLE ON WT AND LT



JET BLACK/JET BLACK CLOTH
STANDARD ON LT



COCOA/DUNE CLOTH
AVAILABLE ON LT

LEATHER-APPOINTED



JET BLACK/JET BLACK
LEATHER-APPOINTED
STANDARD ON LTZ; AVAILABLE ON LT

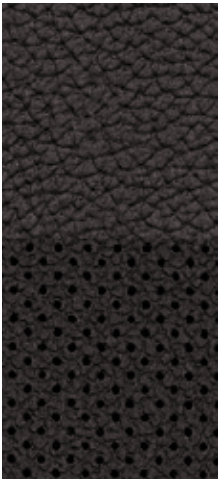


JET BLACK/DARK ASH
LEATHER-APPOINTED
STANDARD ON LTZ



COCOA/DUNE LEATHER-APPOINTED
STANDARD ON LTZ

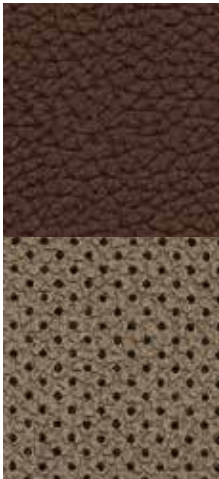
PERFORATED LEATHER-APPOINTED



JET BLACK/JET BLACK PERFORATED
LEATHER-APPOINTED
AVAILABLE ON LTZ

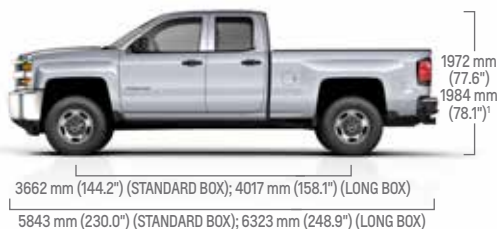


JET BLACK/DARK ASH PERFORATED
LEATHER-APPOINTED
AVAILABLE ON LTZ



COCOA/DUNE PERFORATED
LEATHER-APPOINTED
AVAILABLE ON LTZ

DIMENSIONS



¹Depending on model and tire size selected.

ONSTAR

The level of convenience and safety provided by the various features available through OnStar¹ offers powerfully simple connectivity and peace of mind. To place this capability at your fingertips, Silverado is available with a 6-month trial subscription to the OnStar Directions & Connections Plan. This plan includes:



COMMUNICATIONS • OnStar RemoteLink Mobile App² • Hands-Free Calling³ with voice-activated dialing

DIAGNOSTICS • OnStar Vehicle Diagnostics

NAVIGATION⁴ • OnStar eNAV with MapQuest.com • Turn-By-Turn Navigation⁴ • Destination Download

CONFIDENCE • Stolen Vehicle Assistance⁵ • Roadside Assistance • Remote Door Unlock⁶ • Remote Horn and Lights • Crisis Assist • Emergency Services Link • Automatic Crash Response

KEYLESS ACCESS WITH MOBILE APPS • The search for your key fob is over. Chevrolet offers available OnStar RemoteLink Key Fob Services⁶ on OnStar-equipped 2015 vehicles. Just download the OnStar RemoteLink² Mobile App to lock or unlock your vehicle and start your car⁷ from almost anywhere you have cell service. It can even help you find your car by sounding the horn or flashing the lights in a crowded or dark parking lot.

¹Visit onstar.ca for coverage map, details and system limitations. OnStar acts as a link to existing emergency service providers. Services vary with model and conditions. ²Available on select Apple, Android,™ BlackBerry® and Windows® devices. Services vary by device, vehicle and conditions. Requires active OnStar subscription. ³OnStar Hands-Free Calling (HFC) requires HFC-enabled vehicle, existing OnStar service contract and prepaid calling minutes and is not available in certain markets. Calls may be made to the U.S. and Canada. ⁴Requires Directions & Connections Plan. Not available in certain areas. Visit onstar.ca for coverage map, details and system limitations. ⁵Ability to locate stolen vehicles and remote door unlock success varies with conditions. ⁶Access is available for 5 years from the date of vehicle delivery and is transferable. Does not include any Emergency Services or other OnStar services. To cancel RemoteLink Key Fob Services or if your vehicle is sold, you must contact OnStar at 1.888.4.ONSTAR (1.888.466.7827). Subsequent owners will be able to activate the remaining term. ⁷Requires factory-installed remote vehicle starter system. ⁸Cargo and load capacity limited by weight and distribution. ⁹Depending on model and tire size selected. ¹⁰When properly equipped; includes weight of vehicle, passengers, cargo and equipment.

SILVERADO HD SPECIFICATIONS

CARGO DIMENSIONS ⁸			
DIMENSIONS	STANDARD BOX	LONG BOX SRW	LONG BOX DRW
Cargo Volume, L (cu. ft.)	1727 (61.0)	2161 (76.3)	2161 (76.3)
Inside Width at Floor, mm (in.)	1296 (51.0)	1296 (51.0)	1296 (51.0)
Box Length at Floor, mm (in.)	2003 (78.8)	2483 (97.7)	2483 (97.7)
Inside Box Height, mm (in.)	539 (21.2)	539 (21.2)	542 (21.3)
EXTERIOR DIMENSIONS, mm (in.)	REGULAR CAB	DOUBLE CAB	CREW CAB
Height	1965-1979 (77.3-77.9) ⁹	1972-1984 (77.6-78.1) ⁹	1975-1990 (77.7-78.3) ⁹
Overall Length			
Standard Box	—	5843 (230.0)	6085 (239.5)
Long Box	5701 (224.4)	6323 (248.9)	6565 (258.4)
INTERIOR DIMENSIONS, mm (in.)	REGULAR CAB	DOUBLE CAB	CREW CAB
Head Room (front/rear)	1087/— (42.8/—)	1087/982 (42.8/38.6)	1087/1029 (42.8/40.5)
Leg Room (front/rear)	1150/— (45.2/—)	1150/880 (45.2/34.6)	1150/1040 (45.2/40.9)
Shoulder Room (front/rear)	1677/— (66.0/—)	1647/1634 (64.8/64.3)	1647/1634 (64.8/64.3)
Hip Room (front/rear)	1543/— (60.7/—)	1543/1530 (60.7/60.2)	1543/1530 (60.7/60.2)
WHEELBASE, mm (in.)	REGULAR CAB	DOUBLE CAB	CREW CAB
Standard Box	—	3662 (144.2)	3904 (153.7)
Long Box	3393 (133.6)	4017 (158.1)	4259 (167.7)
STANDARD TECHNICAL DATA			
Series / Drive Type	4x2	4x4	
BRAKES All models: Power 4-wheel antilock braking system	355.6 mm (14") diameter 4-wheel disc	355.6 mm (14") diameter 4-wheel disc	
STEERING	Power recirculating ball	Power recirculating ball	
FUEL TANK CAPACITY (Approx. litres)	136	136	
ALTERNATOR (amps)	150	150	
MAXIMUM GVWR ¹⁰ (Gross Vehicle Weight Rating), kg (lb.) VORTEC 6.0L V8/DURAMAX 6.6L TURBO-DIESEL V8			
	REGULAR CAB	DOUBLE CAB	CREW CAB
2500HD			
Standard Box	—/—	4309/4536 (9500/10,000)	4309/4536 (9500/10,000)
Long Box	4309/4491 (9500/9900)	4309/4536 (9500/10,000)	4491/4536 (9900/10,000)
3500HD			
SRW	4853/5171 (10,700/11,400)	4990/5262 (11,000/11,600)	4990/5262 (11,000/11,600)
DRW	6123/5908 (13,500/13,025)	5908/5908 (13,025/13,025)	5908/5908 (13,025/13,025)

SILVERADO HD SPECIFICATIONS CONTINUED

SILVERADO HD SPECIFICATIONS

ENGINES

	VORTEC 6.0L V8 VVT (2500HD/3500HD)	VORTEC 6.0L V8 VVT (2500HD) Bi-Fuel Compressed Natural Gas (CNG)	DURAMAX 6.6L TURBO-DIESEL V8 (2500HD/3500HD)
FUEL TYPE	Gasoline (FlexFuel)	Gasoline/CNG	Diesel (B20 Biodiesel capable)
CAPACITY, Litres (cu. in.)	6.0 (364)	6.0 (364)	6.6 (402)
SAE NET HORSEPOWER @ RPM	360@5400	360@5400 (gasoline) 301@5000 (CNG)	397@3000
SAE NET TORQUE (LB.-FT.) @ RPM	380@4200	380@4200 (gasoline) 333@4200 (CNG)	765@1600
ENGINE / MODEL AVAILABILITY			
Regular Cab	●	—	○
Double Cab	●	○	○
Crew Cab	●	○	○

SILVERADO HD SUSPENSIONS¹

FRONT SUSPENSIONS¹

INDEPENDENT TORSION BAR—2500HD/3500HD

STANDARD FRONT AXLE/ CAPACITY, kg (lb.)	4x2	4x4
Regular Cab	1996/1996 (4400/4400)	1996/1996 (4400/4400)
Double Cab	1996/1996 (4400/4400)	1996/2177 (4400/4800)
Crew Cab	1996/1996 (4400/4400)	2177/2177 (4800/4800)

STANDARD FRONT SPRING CAPACITY, kg (lb.)

Regular Cab	1996/1996 (4400/4400)	1996/1996 (4400/4400)
Double Cab	1996/1996 (4400/4400)	1996/2177 (4400/4800)
Crew Cab	1996/1996 (4400/4400)	2177/2177 (4800/4800)

REAR SUSPENSIONS¹

SEMI-ELLIPTICAL MULTILEAF—2500HD/3500HD-SRW/3500HD-DRW

REAR AXLE CAPACITY, kg (lb.)	4x2	4x4
Regular Cab	2812/3198/4457 (6200/7050/9825)	2812/3198/4457 (6200/7050/9825)
Double Cab	2812/3198/4252 (6200/7050/9375)	2812/3198/4252 (6200/7050/9375)
Crew Cab	2812/3198/4252 (6200/7050/9375)	2812/3198/4252 (6200/7050/9375)

REAR SPRING CAPACITY, kg (lb.)

Regular Cab	2812/3198/4457 (6200/7050/9825)	2812/3198/4457 (6200/7050/9825)
Double Cab	2812/3198/4252 (6200/7050/9375)	2812/3198/4252 (6200/7050/9375)
Crew Cab	2812/3198/4252 (6200/7050/9375)	2812/3198/4252 (6200/7050/9375)

KEY ● STANDARD ○ AVAILABLE — NOT AVAILABLE



¹Capacities and weight ratings are dependent on model, engine, transmission and GVWR combinations. See your Chevrolet dealer for details.

SILVERADO HD SPECIFICATIONS CONTINUED

2500HD/3500HD CONVENTIONAL TRAILER WEIGHT RATINGS, ¹ kg (lb.)													
Model	Engine	Axle Ratio	GCWR ²	2500HD Standard Box 4x2 SRW	2500HD Long Box 4x2 SRW	3500HD Standard Box 4x2 SRW	3500HD Long Box 4x2 SRW	3500HD Long Box 4x2 DRW	2500HD Standard Box 4x4 SRW	2500HD Long Box 4x4 SRW	3500HD Standard Box 4x4 SRW	3500HD Long Box 4x4 SRW	3500HD Long Box 4x4 DRW
Regular Cab	Vortec 6.0L V8	4.10	9299 (20,500)	—	5897 (13,000)	—	5897 (13,000)	6441 (14,200)	—	5897 (13,000)	—	5897 (13,000)	6305 (13,900)
		3.73	7257 (16,000)	—	4672 (10,300)	—	4581 (10,100)	4400 (9700)	—	4536 (10,000)	—	4445 (9800)	4264 (9400)
	Duramax 6.6L Turbo-Diesel V8	3.73	11,113 (24,500)	—	5897 (13,000)	—	—	—	—	5897 (13,000)	—	5897 (13,000)	—
		3.73	13,835 (30,500)	—	—	—	—	—	—	—	—	—	7257 (16,000)
Double Cab	Vortec 6.0L V8	4.10	9299 (20,500)	5897 (13,000)	5897 (13,000)	—	5897 (13,000)	6260 (13,800)	5897 (13,000)	5897 (13,000)	—	5897 (13,000)	6123 (13,500)
		3.73	7257 (16,000)	4536 (10,000)	4491 (9900)	—	4400 (9700)	4218 (9300)	4400 (9700)	4354 (9600)	—	4264 (9400)	4082 (9000)
	Duramax 6.6L Turbo-Diesel V8	3.73	11,113 (24,500)	5897 (13,000)	5897 (13,000)	—	5897 (13,000)	—	5897 (13,000)	5897 (13,000)	—	5897 (13,000)	—
		3.73	13,835 (30,500)	—	—	—	—	7484 (16,500)	—	—	—	—	8165 (18,000)
Crew Cab	Vortec 6.0L V8	4.10	9299 (20,500)	5897 (13,000)	5897 (13,000)	5897 (13,000)	5897 (13,000)	6214 (13,700)	5897 (13,000)	5897 (13,000)	5897 (13,000)	5897 (13,000)	6033 (13,300)
		3.73	7257 (16,000)	4445 (9800)	4400 (9700)	4354 (9600)	4309 (9500)	4173 (9200)	4309 (9500)	4218 (9300)	4264 (9400)	4173 (9200)	3992 (8800)
	Duramax 6.6L Turbo-Diesel V8	3.73	11,113 (24,500)	5897 (13,000)	5897 (13,000)	5897 (13,000)	5897 (13,000)	—	5897 (13,000)	6577 (14,500)	5897 (13,000)	6804 (15,000)	—
		3.73	13,835 (30,500)	—	—	—	—	7484 (16,500)	—	—	—	—	8890 (19,600)

2500HD/3500HD FIFTH-WHEEL/GOOSENECK TRAILER WEIGHT RATINGS, ¹ kg (lb.)													
Model	Engine	Axle Ratio	GCWR ²	2500HD Standard Box 4x2 SRW	2500HD Long Box 4x2 SRW	3500HD Standard Box 4x2 SRW	3500HD Long Box 4x2 SRW	3500HD Long Box 4x2 DRW	2500HD Standard Box 4x4 SRW	2500HD Long Box 4x4 SRW	3500HD Standard Box 4x4 SRW	3500HD Long Box 4x4 SRW	3500HD Long Box 4x4 DRW
Regular Cab	Vortec 6.0L V8	4.10	9299 (20,500)	—	6713 (14,800)	—	6622 (14,600)	6441 (14,200)	—	6577 (14,500)	—	6486 (14,300)	6305 (13,900)
		3.73	7257 (16,000)	—	4672 (10,300)	—	4581 (10,100)	4400 (9700)	—	4536 (10,000)	—	4445 (9800)	4264 (9400)
	Duramax 6.6L Turbo-Diesel V8	3.73	11,113 (24,500)	—	8119 (17,900)	—	—	—	—	7983 (17,600)	—	7938 (17,500)	—
		3.73	13,835 (30,500)	—	—	—	—	—	—	—	—	—	10,523 (23,200)
Double Cab	Vortec 6.0L V8	4.10	9299 (20,500)	6577 (14,500)	6532 (14,400)	—	6441 (14,200)	6260 (13,800)	6441 (14,200)	6396 (14,100)	—	6305 (13,900)	6123 (13,500)
		3.73	7257 (16,000)	4536 (10,000)	4491 (9900)	—	4400 (9700)	4218 (9300)	4400 (9700)	4354 (9600)	—	4264 (9400)	4082 (9000)
	Duramax 6.6L Turbo-Diesel V8	3.73	11,113 (24,500)	7983 (17,600)	7938 (17,500)	—	7938 (17,500)	—	7847 (17,300)	7802 (17,200)	—	7802 (17,200)	—
		3.73	13,835 (30,500)	—	—	—	—	10,433 (23,000)	—	—	—	—	10,342 (22,800)
Crew Cab	Vortec 6.0L V8	4.10	9299 (20,500)	6486 (14,300)	6441 (14,200)	6396 (14,100)	6350 (14,000)	6214 (13,700)	6350 (14,000)	6260 (13,800)	6305 (13,900)	6214 (13,700)	6033 (13,300)
		3.73	7257 (16,000)	4445 (9800)	4400 (9700)	4354 (9600)	4309 (9500)	4173 (9200)	4309 (9500)	4218 (9300)	4264 (9400)	4173 (9200)	3992 (8800)
	Duramax 6.6L Turbo-Diesel V8	3.73	11,113 (24,500)	7893 (17,400)	7847 (17,300)	7893 (17,400)	7847 (17,300)	—	7756 (17,100)	7439 (16,400)	7756 (17,100)	7666 (16,900)	—
		3.73	13,835 (30,500)	—	—	—	—	10,387 (22,900)	—	—	—	—	10,251 (22,600)

¹Maximum trailer weight ratings are calculated assuming a base vehicle, except for any option(s) necessary to achieve the rating, plus driver. The weight of other optional equipment, passengers and cargo will reduce the maximum trailer weight your vehicle can tow. See your Chevrolet dealer for additional details. ²Gross Combined Weight Rating. When properly equipped, includes weight of the vehicle and trailer combination, including the weight of driver, passengers, fuel, optional equipment and cargo in the vehicle and trailer.

2500HD/3500HD AXLE RATINGS AND PLOW WEIGHTS, kg (lb.)													
FRONT GROSS AXLE WEIGHT RATING (FGAWR) WITH SNOW PLOW PREP PACKAGE (4x4 MODELS ONLY)							MAXIMUM PLOW WEIGHTS ³ (4x4 MODELS ONLY)						
Model	Engine RPO	Engine Type	2500HD	3500HD SRW	3500HD DRW		Model	Engine RPO	Engine Type	2500HD	3500HD SRW	3500HD DRW	
Regular Cab	L96	Gas	2359 (5200)	2540 (5600)	2540 (5600)		Regular Cab	L96	Gas	408 (900)	454 (1000)	454 (1000)	
	LML	Diesel	2722 (6000)	2722 (6000)	2722 (6000)			LML	Diesel	442 (975)	442 (975)	420 (925)	
Double Cab Standard Box/ Long Box	L96	Gas	2359/2540 (5200/5600)	—/2540 (—/5600)	—/2540 (—/5600)		Double Cab Standard Box/ Long Box	L96	Gas	352/454 (775/1000)	—/454 (—/1000)	—/454 (—/1000)	
	LML	Diesel	2722/2722 (6000/6000)	—/2722 (—/6000)	—/2722 (—/6000)			LML	Diesel	374/352 (825/775)	—/363 (—/800)	—/352 (—/775)	
Crew Cab Standard Box/ Long Box	L96	Gas	2359/2540 (5200/5600)	2540/2540 (5600/5600)	—/2540 (—/5600)		Crew Cab Standard Box/ Long Box	L96	Gas	329/431 (725/950)	454/431 (1000/950)	—/420 (—/925)	
	LML	Diesel	2722/2722 (6000/6000)	2722/2722 (6000/6000)	—/2722 (—/6000)			LML	Diesel	352/318 (775/700)	363/329 (800/725)	—/318 (—/700)	

SRW=Single Rear Wheel DRW=Dual Rear Wheel **NOTE:** All models are capable of up to 45 kg (100 lb.) maximum of permanently attached snow plow mounting hardware. ³Maximum weight (kg) of removable snow plow blade and blade hardware. Maximum plow weights based on a vehicle with average manufacturer option content and 68 kg (150 lb.) each for driver and one additional front-seat occupant. Additional equipment and occupants will reduce maximum plow weight. Rear compensating weight may be required to maintain front axle weight below 65% of total vehicle weight when equipped with snow plow. Consult your snow plow manufacturer for specific compensating weight recommendation.

SILVERADO HD SPECIFICATIONS CONTINUED

2500HD/3500HD MAXIMUM PAYLOAD, kg (lb.) ¹												
Model	Engine	GVWR ²	2500HD Standard Box 4x2 SRW	2500HD Long Box 4x2 SRW	3500HD Standard Box 4x2 SRW	3500HD Long Box 4x2 SRW	3500HD Long Box 4x2 DRW	2500HD Standard Box 4x4 SRW	2500HD Long Box 4x4 SRW	3500HD Standard Box 4x4 SRW	3500HD Long Box 4x4 SRW	3500HD Long Box 4x4 DRW
Regular Cab	Vortec 6.0L V8	4218 (9300)	—	1706 (3760)	—	—	—	—	—	—	—	—
		4309 (9500)	—	—	—	—	—	—	1648 (3633)	—	—	—
		4717 (10,400)	—	—	—	2124 (4682)	—	—	—	—	—	—
		4853 (10,700)	—	—	—	—	—	—	—	—	2114 (4660)	—
		6078 (13,400)	—	—	—	—	—	—	—	—	—	3153 (6952)
		6123 (13,500)	—	—	—	—	3345 (7374)	—	—	—	—	—
	Duramax 6.6L Turbo-Diesel V8	4491 (9900)	—	1588 (3501)	—	—	—	—	1440 (3174)	—	—	—
		5171 (11,400)	—	—	—	—	—	—	—	—	2087 (4600)	—
		5908 (13,025)	—	—	—	—	—	—	—	—	—	2639 (5817)
Double Cab	Vortec 6.0L V8	4309 (9500)	1665/1368 (3671/3016) ³	1614/1318 (3559/2905) ³	—	—	—	1533/1236 (3379/2724) ³	1485/1188 (3274/2620) ³	—	—	—
		4853 (10,700)	—	—	—	2083 (4593)	—	—	—	—	—	—
		4990 (11,000)	—	—	—	—	—	—	—	—	2094 (4617)	—
		5908 (13,025)	—	—	—	—	2926 (6450)	—	—	—	—	2799 (6170)
	Duramax 6.6L Turbo-Diesel V8	4536 (10,000)	1502 (3312)	1451 (3200)	—	—	—	1370 (3020)	1322 (2915)	—	—	—
		5080 (11,200)	—	—	—	1965 (4333)	—	—	—	—	—	—
		5262 (11,600)	—	—	—	—	—	—	—	—	2022 (4457)	—
		5908 (13,025)	—	—	—	—	2581 (5690)	—	—	—	—	2454 (5410)
Crew Cab	Vortec 6.0L V8	4309 (9500)	1561/1264 (3441/2786) ³	1515/1218 (3340/2685) ³	—	—	—	1430/1131 (3152/2493) ³	—	—	—	—
		4491 (9900)	—	—	—	—	—	—	1537/1240 (3388/2733) ³	—	—	—
		4763 (10,500)	—	—	1959 (4319)	—	—	—	—	—	—	—
		4853 (10,700)	—	—	—	1990 (4387)	—	—	—	—	—	—
		4899 (10,800)	—	—	—	—	—	—	—	1961 (4324)	—	—
		4990 (11,000)	—	—	—	—	—	—	—	—	1972 (4348)	—
		5908 (13,025)	—	—	—	—	2861 (6308)	—	—	—	—	2706 (5965)
	Duramax 6.6L Turbo-Diesel V8	4536 (10,000)	1398 (3082)	1352 (2981)	—	—	—	1267 (2793)	1192 (2628)	—	—	—
		5035 (11,100)	—	—	1886 (4159)	—	—	—	—	—	—	—
		5171 (11,400)	—	—	—	1963 (4327)	—	—	—	—	—	—
		5216 (11,500)	—	—	—	—	—	—	—	1934 (4264)	—	—
		5262 (11,600)	—	—	—	—	—	—	—	—	1900 (4188)	—
		5908 (13,025)	—	—	—	—	2517 (5548)	—	—	—	—	2361 (5205)

¹Maximum payload capacity includes weight of driver, passengers, optional equipment and cargo; payload capacities are approximate. ²Gross Vehicle Weight Rating. When properly equipped; includes weight of vehicle, passengers, cargo and equipment.
³Maximum payload capacity when equipped with the available Vortec 6.0L V8 CNG engine (LC8).

TRIM LEVELS	WT	LT	LTX
CONFIGURATIONS			
REGULAR CAB	●	●	—
DOUBLE CAB	●	●	●
CREW CAB	●	●	●
4x2	●	●	●
4x4	●	●	●
MECHANICAL			
AIR CLEANER High capacity	●	●	●
ALTERNATOR 150 amps	●	●	●
220 amps. Included with the Snow Plow Prep Package when Vortec 6.0L V8 VVT SFI is ordered. Requires Vortec 6.0L VVT SFI V8.	●	●	●
Dual, 150 amps each. Included with the Snow Plow Prep Package when Duramax 6.6L Turbo-Diesel V8 is ordered. Requires Duramax 6.6L Turbo-Diesel V8 engine.	●	●	●
AUXILIARY EXTERNAL TRANSMISSION OIL COOLER	●	●	●
AUXILIARY EXTERNAL ENGINE OIL COOLER	●	●	●
BATTERY Heavy-duty maintenance-free with rundown protection and retained accessory power	●	●	●
AUXILIARY BATTERY 730 Cold Cranking Amps (CCA). Requires Vortec 6.0L VVT SFI V8 non-Bi-Fuel engine.	●	●	●
BRAKES 4-wheel disc with 4-wheel anti-lock	●	●	●
COLD-WEATHER PROVISIONS Includes front radiator grille and front bumper openings cover. Requires Duramax 6.6L Turbo-Diesel V8 engine.	●	●	●
EATON® HEAVY-DUTY AUTOMATIC LOCKING REAR DIFFERENTIAL Included with Trailering Equipment Package and Z71 Off-Road Package on 2500HD models. Standard on 2500HD LTZ and 3500HD pickup models.	●	●	●
FRAME Fully boxed with hydroformed front section	●	●	●
ENGINE Vortec 6.0L V8 VVT FlexFuel with SFI	●	●	●
Vortec 6.0L V8 VVT Bi-Fuel Compressed Natural Gas (CNG). 2500HD Double Cab and Crew Cab models only. Restrictions apply.	●	●	●
Duramax 6.6L Turbo-Diesel V8 with direct injection and B20 biodiesel capability	●	●	●
ENGINE BLOCK HEATER Included with Duramax 6.6L Turbo-Diesel V8	●	●	●
EXHAUST Aluminized stainless-steel muffler and tailpipe	●	●	●
EXHAUST BRAKE Switch activated. Included and only available with Duramax 6.6L Turbo-Diesel V8.	●	●	●
HIGH IDLE SWITCH	●	●	●
INTEGRATED TRAILER BRAKE CONTROLLER Included on all 3500HD and 2500HD LTZ models. Optional on 2500HD WT and LT models. Included with Trailering Equipment Package on 2500HD WT and LT models.	●	●	●
STABILITRAK STABILITY CONTROL SYSTEM Includes Proactive Roll Avoidance, traction control, electronic trailer sway control and Hill Start Assist	●	●	●
STEERING Power, recirculating ball	●	●	●
SUSPENSION Front independent with torsion bars. Includes 51 mm twin-tube shock absorbers and 33 mm front stabilizer bar.	●	●	●
Rear multileaf springs, semielliptical with urethane jounce bumpers	●	●	●
TRANSMISSION 6L90-E 6-speed automatic. Includes Tow/Haul mode, Cruise Grade Braking and Powertrain Grade Braking. Standard and only available with Vortec 6.0L V8.	●	●	●
Allison® 1000 Series 6-speed automatic. Includes Tow/Haul mode and electronic Powertrain Grade Braking. Included and only available with Duramax 6.6L Turbo-Diesel V8.	●	●	●
TRANSFER CASE 2-speed with 2.72-to-1 low-range, floor-mounted shifter (4x4 models only)	●	—	—
Electronic shift rotary dial controls 2-speed and 2.72-to-1 low-range (4x4 models only)	—	●	●
TRAILER WIRING PROVISIONS For camper, fifth-wheel and gooseneck trailer. Includes additional 7-way wiring harness routed to front of pickup box. Not available with Vortec 6.0L V8 Bi-Fuel CNG engine. Requires Trailering Equipment Package.	●	●	●
REAR AXLE 4.10 ratio. Standard and only available on Vortec 6.0L V8.	●	●	●
3.73 ratio. Included with Duramax 6.6L Turbo-Diesel V8. Available with Vortec 6.0L V8.	●	●	●
INSTRUMENTATION AND CONTROLS			
DRIVER INFORMATION CENTRE With 89 mm (3.5") diagonal monochromatic display. Provides warning messages, odometer, trip odometer, Oil Life Monitoring System, tire pressure monitoring system (does not monitor spare tire; included on 2500HD models only) and basic vehicle information.	●	—	—
With 107 mm (4.2") diagonal colour display. Includes driver personalization, warning messages, odometer, trip odometer, Oil Life Monitoring System, tire pressure monitoring system (does not monitor spare tire; included on 2500HD models only) and vehicle information.	—	●	●
POWER-ADJUSTABLE PEDALS On LT models, included and only available with LT Plus Package. On LTZ models, included and only available with LTZ Plus Package.	—	●	●
110-VOLT POWER OUTLET In-cabin, 3-prong, household-style outlet. Included and only available with WT Convenience Package on WT models. On LT models, included and only available with the LT Convenience Package.	●	●	●

KEY ● STANDARD ● AVAILABLE — NOT AVAILABLE

TRIM LEVELS	WT	LT	LTX
STEERING WHEEL Polyurethane with cruise controls	●	—	—
Leather-wrapped with audio and cruise controls	—	●	●
Heated and leather-wrapped with audio and cruise controls. Included and only available on LTZ with LTZ Plus Package.	—	—	●
STEERING COLUMN Tilt-Wheel, manual operation	●	●	●
Tilt-Wheel and telescopic manual operation	—	—	●
SEATING			
SEATS Front 40/20/40 split bench, 3-passenger, driver and front-passenger manual recline with outboard head restraints and centre fold-down armrest with storage. Vinyl has fixed lumbar and cloth has manually adjustable driver lumbar.	●	—	—
Front 40/20/40 split bench, 3-passenger. Available in cloth or leather-appointed outside seating positions. Includes driver and front-passenger recline with outboard head restraints and centre fold-down armrest with storage. Also includes manually adjustable driver lumbar, lockable storage compartment in centre seat cushion and storage pockets.	—	●	—
Seat adjuster, driver 10-way power. Requires bench seating. Included and only available with LT Convenience Package.	—	●	—
Front cloth bucket seats with heat. Includes 10-way power driver and 6-way power front-passenger seat adjusters, driver/front-passenger power recline and driver/front-passenger power lumbar. Also includes adjustable head restraints, floor console and storage pockets.	—	●	—
Front 40/20/40 leather-appointed split bench, 3-passenger with heat for outboard seats. Includes 10-way power driver and front-passenger seat adjusters, including driver and front-passenger power recline, driver/front-passenger power lumbar, 2-position driver memory and adjustable outboard head restraints.	—	—	●
Front full-feature leather-appointed bucket seat cushions and seatbacks. Includes 10-way power driver and front-passenger seat adjusters, including 2-way power lumbar control, 2-position driver memory, adjustable head restraints, floor console and storage pockets.	—	—	●
Heated driver and front-passenger seats. On LT models, requires LT Convenience Package with cloth front bench seat. Included with optional cloth front bucket seats or leather-appointed front bench seat.	—	●	●
Heated and cooled perforated leather-appointed front bucket seats. Requires front bucket seats.	—	—	●
Rear folding 3-person bench. Double Cab models only. Includes child seat top tether anchor.	●	—	—
Rear folding 60/40-split 3-passenger bench. Includes child seat top tether anchor. Not available on Double Cab WT models.	●	●	●
INTERIOR DETAILS			
CLIMATE CONTROL Single-zone manual air conditioning	●	●	—
Dual-zone automatic climate control. On LT models, included and only available with LT Convenience Package. Not available on Regular Cab models.	—	●	●
CRUISE CONTROL	●	●	●
DEFOGGER Rear-window electric. On LT models, included and only available with LT Convenience Package or LT Plus Package.	●	●	●
DOOR LOCKS Power	●	●	●
FLOOR COVERING Colour-keyed carpeting with rubberized vinyl floor mats. (Double Cab and Crew Cab models include second-row floor mats.)	●	●	●
Graphite-coloured rubberized vinyl	●	●	—
REAR PARK ASSIST Ultrasonic. Included and only available with LT Plus Package on Double Cab and Crew Cab models.	—	●	—
FRONT AND REAR PARK ASSIST Ultrasonic. Included and only available with LTZ Plus Package or Driver Alert Package. On LT models, requires Regular Cab and Driver Alert Package.	—	●	●
REAR VISION CAMERA WITH DYNAMIC GRID LINES On LT models, included and only available with LT Convenience Package	—	●	●
REMOTE START On LT models, included and only available with LT Convenience Package	—	●	●
REMOTE KEYLESS ENTRY Included and only available with WT Convenience Package on WT models	●	●	●
REARVIEW MIRROR With manual day/night adjustment. Not available on 3500HD LT models.	●	●	—
With inside rearview auto-dimming feature. Included with outside heated power-adjustable vertical camper mirrors on 2500HD WT and LT, and chrome-cap heated mirrors on LTZ and 3500HD WT models.	●	●	●
SILL PLATES Brushed-metal on Z71	—	●	●
SUNROOF Power sliding with express-open. Crew Cab models only. Not available with Snow Plow Prep Package.	—	—	●
UNIVERSAL HOME REMOTE On LT models, included and only available with LT Plus Package. Not available on Regular Cab models, provisions for roof-mounted light or Snow Plow Prep Package.	—	●	●
WINDOWS Manual. Standard on WT Regular Cab models.	●	—	—
Power with driver express-up and -down and express-down on all other windows. Standard on WT Double Cab and Crew Cab models.	●	●	●
Power rear sliding with rear defogger. On LT models, included and only available with LT Plus Package. Not available on Regular Cab models, provisions for roof-mounted light or Snow Plow Prep Package.	—	●	●



TRIM LEVELS	WT	LT	LTX
OPTION PACKAGES			
WORK TRUCK CONVENIENCE PACKAGE Includes solar-absorbing deep-tinted glass, power windows on Regular Cab models, power-adjustable mirrors, remote keyless entry and 110-volt outlet	●	—	—
LT CONVENIENCE PACKAGE Includes driver 10-way power seat adjuster, front fog lights, remote vehicle start system, Rear Vision Camera, rear-window defogger and 110-volt power outlet. On Double Cab and Crew Cab models, also includes 203 mm (8") diagonal audio system and dual-zone climate control.	—	●	—
LT PLUS PACKAGE Includes Universal Home Remote, Rear Park Assist and power-adjustable pedals. Not available on Regular Cab models, provisions for cab roof-mounted light or Snow Plow Prep Package.	—	●	—
LTZ PLUS PACKAGE Includes power-adjustable pedals, Bose® premium audio system, Front and Rear Park Assist and heated leather-wrapped steering wheel. Requires leather-appointed front bucket seats.	—	—	●
DRIVER ALERT PACKAGE Includes Lane Departure Warning, Forward Collision Alert, Safety Alert Driver Seat and Front and Rear Park Assist. Requires heated and cooled driver and front-passenger bucket seats on Double Cab and Crew Cab models. On LT models, requires Jet Black cloth 40/20/40 split bench seat on Regular Cab only. On 3500HD models, requires front-seat-mounted side-impact and front and rear head curtain side-impact air bags. ¹	—	●	●
CHROME ESSENTIALS PACKAGE Includes chrome recovery hooks, 152 mm (6") assist steps and polished exhaust tip with Vortec 6.0L V8 gas engines. Not available on Regular Cab models.	—	●	—
Z71 OFF-ROAD PACKAGE Includes Hill Descent Control, underbody shields, unique interior trim, brushed-metal Z71 sill plates, unique Z71 gauge cluster, Z71 emblem in grille, unique lower front bumper appearance, Z71 pickup box decals and fog lights on LT models. 2500HD models include Trailering Equipment Package with trailer brake controller and automatic locking rear differential. SRW models only.	—	●	●
TRAILERING EQUIPMENT PACKAGE Includes trailer hitch platform 64 mm (2.5") with a 51 mm (2.0") insert, 7-wire harness with independent fused trailering circuits mated to a 7-way sealed connector to hook up parking lights, backup lights, right and left turn signals, an electric brake lead, battery and a ground. Connector also includes the 4-way blade-style connector. 2500HD models include automatic locking rear differential and trailer brake controller. Included on 3500HD models. Not available with rear bumper delete.	●	●	●
SNOW PLOW PREP PACKAGE Includes power feed for back-up and roof emergency light, 220-amp alternator (Vortec 6.0L V8) (dual 150-amp included with Duramax 6.6L Turbo-Diesel V8), forward light wiring harness, provisions for cab roof-mounted light/beacon, Skid Plate Package and increased Front Gross Axle Weight Rating (FGAWR). 4x4 models only.	●	●	●
SKID PLATE PACKAGE Includes frame-mounted shields, front underbody shield starting behind front bumper and running to first cross-member, protecting front underbody, oil pan, differential case and transfer case. Included and only available with Snow Plow Prep Package and Z71 Off-Road Package.	●	●	●
PROVISIONS FOR CAB-MOUNTED LIGHT/BEACON Includes instrument panel-mounted switch and electrical wiring tucked beneath the headliner for body upfitter to connect a body-mounted warning or emergency light. Included with Snow Plow Prep Package. Not available with Universal Home Remote, power sliding rear window or power sunroof.	●	●	—
ENTERTAINMENT/COMMUNICATION/NAVIGATION			
107 MM (4.2") DIAGONAL COLOUR RADIO Includes AM/FM, USB ports, ² auxiliary jack and SD card slot	●	—	—
CHEVROLET MYLINK 107 MM (4.2") DIAGONAL COLOUR RADIO³ Includes AM/FM/CD, USB ports, ² SD card slot, auxiliary jack, Bluetooth® ² streaming audio for music and select phones, hands-free smartphone integration, Stitcher SmartRadio® ⁴ and voice-activated technology for radio and phone.	●	●	—
CHEVROLET MYLINK 203 MM (8") DIAGONAL COLOUR TOUCH RADIO³ Includes AM/FM/SiriusXM® (standard for 3 months), USB ports, ² SD card slot, auxiliary jack, Bluetooth® streaming audio for music and select phones, hands-free smartphone integration and voice-activated technology for radio, phone and customizable themes. On LT models, included and only available with LT Convenience Package. Not available on Regular Cab models.	—	●	●
CHEVROLET MYLINK 203 MM (8") DIAGONAL COLOUR TOUCH RADIO WITH NAVIGATION⁵ Includes all features of Chevrolet MyLink ³ 203 mm (8") diagonal Colour Touch Radio plus Navigation feature. Not available on Regular Cab models.	—	●	●
Single-slot CD/MP3 player. On Regular Cab models, requires Chevrolet MyLink. ³	●	●	●
6-SPEAKER AUDIO SYSTEM Double Cab and Crew Cab models on WT	●	●	●
Bose premium audio system with 6 speakers (7-speaker system including subwoofer when ordered with bucket seats). On LT models, requires LT Convenience Package. On LTZ models, included and only available with LTZ Plus Package.	—	●	●
BLUETOOTH® FOR PHONE Personal cellphone connectivity to vehicle audio system. Included and only available with Chevrolet MyLink ³ 107 mm (4.2") diagonal Colour Touch Radio on WT models.	●	●	●
SIRIUSXM® SATELLITE RADIO Including 3 trial months of service. On WT models, requires Chevrolet MyLink ³ 107 mm (4.2") diagonal Colour Touch Radio and OnStar. ⁷	●	●	●
REAR-SEAT ENTERTAINMENT PACKAGE Includes single display, remote control, auxiliary jack, 2 wireless dual-channel headphones and rear-seat audio controls. Requires front bucket seats and LTZ Plus Package.	—	—	●
EXTERIOR STYLING AND FUNCTIONALITY			
ASSIST STEPS Chromed tubular with 152 mm (6") rectangular design. Included on 3500HD Double Cab and Crew Cab LTZ DRW models only.	●	●	●
BUMPER Front, chrome	●	●	●
Rear, chrome with CornerStep bumper	●	●	●
CAB CLEARANCE LIGHTS Included with DRW models. Optional on SRW models.	●	●	●
CARGO BOX Movable tie-downs, high-mounted (4)	●	●	●
Box rail caps	●	●	●
DOOR HANDLES Black	●	●	—
Chrome	—	—	●
FOG LIGHTS Front, halogen. On LT models, included and only available with LT Convenience Package or Z71 Off-Road Package.	—	●	●
FRONT-MOUNTED LICENCE PLATE PROVISIONS Included for vehicles shipped to BC, MB, NB, ON, NF and LB Provinces	●	●	●
GRILLE SURROUND Chrome	●	●	●
Z71-specific with badge	—	●	●
GLASS Solar-Ray tinted	●	—	—
Solar-Ray deep-tinted. Included and only available with WT Convenience Package on WT models.	●	●	●
LIGHTS Halogen projector-beam	●	●	●
Under-rail LED lighting, cargo box	●	●	●
MOULDINGS Bodyside, chrome	—	—	●
RECOVERY HOOKS Front frame-mounted (black)	●	●	●
SPRAY-IN BED LINER	●	●	●
TAILGATE Locking	●	●	●
Locking with EZ-Lift and Lower Tailgate feature	—	●	●
TIRE CARRIER Outside spare, winch-type. Includes lock.	●	●	●
WHEELHOUSE LINERS Rear. SRW Double Cab and Crew Cab models only.	—	●	●
WIPERS Front intermittent	●	●	●
OUTSIDE MIRRORS			
Black manual-folding (2500HD models only)	●	—	—
Black heated, power-adjustable, manual-folding (2500HD models only)	●	●	—
Chrome-cap heated, power-adjustable/power-folding. With integrated turn signal indicators, driver-side auto-dimming and puddle lamps. Not available on 3500HD models.	—	—	●
VERTICAL CAMPER Manual-folding with lower convex spotter glass. Standard on 3500HD models. Available on 2500HD models.	●	—	—
Heated, power-adjustable with integrated turn signal indicators; manual-folding/extension; black (convex glass is not heated or power adjustable). WT models require WT Convenience Package. LT 2500HD models require inside rearview auto-dimming mirror. Standard on 3500HD LT and LTZ models.	●	●	●
SAFETY AND SECURITY			
AIR BAG¹ Single-stage frontal for driver and front passenger	●	●	●
Front-seat-mounted side-impact driver and right front-passenger air bags for thorax and pelvis protection. Included on 2500HD models.	●	●	●
Front and rear head curtain side-impact air bags for all outboard seating positions. Included on 2500HD models.	●	●	●
DAYTIME RUNNING LIGHTS With automatic light control	●	●	●
LANE DEPARTURE WARNING AND FORWARD COLLISION ALERT Included and only available with Driver Alert Package. On LT models, requires Regular Cab.	—	●	●
SAFETY ALERT DRIVER SEAT Included and only available with Driver Alert Package. On LT models, requires Regular Cab.	—	●	●
ONSTAR⁷ IN-VEHICLE COMMUNICATIONS AND ASSISTANCE SERVICE Includes 6 months of Directions & Connections Plan with Turn-By-Turn Navigation ⁷ and OnStar RemoteLink ⁸	●	●	●
THEFT DETERRENT SYSTEM Unauthorized entry. Included and only available with remote vehicle start system on LT models.	—	●	●

KEY ● STANDARD ● AVAILABLE — NOT AVAILABLE

¹Always use safety belts and the correct restraint for your child's age and size. Even in vehicles equipped with the Passenger Sensing System, children are safer when properly secured in a rear seat in the appropriate infant, child or booster seat. Never place a rear-facing infant restraint in the front seat of any vehicle equipped with an active frontal air bag. See your vehicle Owner's Manual and child safety seat instructions for more safety information. ²Not compatible with all devices. ³Full functionality requires compatible Bluetooth and smartphone, and USB connectivity for some devices. Visit mylink.chevrolet.ca for details. ⁴Data plan rates apply. ⁵Available in 10 Canadian provinces and the 48 contiguous United States. Subscription sold separately after trial period. If you decide to continue your service at the end of your trial subscription, the plan you choose will automatically renew and bill at then-current rates until you call 1-877-209-0079 to cancel. Other fees and taxes will apply. All fees and programming subject to change. See SiriusXM "Terms & Conditions" and complete details at siriusxm.ca. ⁶Full functionality requires compatible Bluetooth and smartphone, and USB connectivity for some devices. Visit mylink.chevrolet.ca for details. At time of printing, detailed map coverage is available for most major urban areas of the United States and for certain metropolitan areas of Canada (Vancouver, Calgary, Edmonton, Winnipeg, Windsor, London, Toronto, Ottawa, Montreal, Quebec City and Halifax). Coverage is significantly limited outside these areas. ⁷Visit onstar.ca for coverage map, details and system limitations. Services vary by model and conditions. OnStar acts as a link to existing emergency service providers. Not all vehicles may transmit all crash data. After trial period, an active OnStar service plan is required. ⁸Available on select Apple® Android®, BlackBerry® and Windows® devices. Requires active OnStar service plan.

IMPORTANT WORDS

PEACE OF MIND, STANDARD WITH EVERY CHEVROLET MODEL

When you build them with quality, you can back them with confidence. Program highlights include:

- 3-year/60,000 km New-Vehicle Limited Warranty¹
- 5-year/160,000 km Powertrain Component Limited Warranty, with \$0 deductible on repairs and the warranty is fully transferable at no charge¹
- 5-year/160,000 km Courtesy Transportation¹
- 5-year/160,000 km 24/7 Roadside Assistance¹
- 6-year/160,000 km rust-through perforation coverage¹
- 8-year/130,000 km coverage on catalytic converters and Powertrain Control Modules (PCMs)¹

OTHER OWNERSHIP PRIVILEGES AND PROGRAMS:²

- **GM Protection Plan (GMPP)**—The only extended service plan backed by the resources and commitment of General Motors, GMPP may be purchased at the time of sale or subsequently during the New-Vehicle Limited Warranty period.
- **GM Goodwrench Service**—With GM-certified technicians and GM-approved parts, nobody knows your GM vehicle better.
- **Chevrolet Owner Centre**—As an owner, take advantage of the Chevrolet Owner Centre. This online owner's destination gives you access to coupons, contests, current offers and the latest driving and maintenance tips. Find out more at chevroletowner.ca.

TO HELP YOU PURCHASE OR LEASE A NEW VEHICLE:

- **Purchase Financing and Leasing**—On-the-spot financing, see dealer for full details.³
- **GM Student Bonus Program**—Students or recent graduates of high school, college or university² may be entitled to receive a Student Bonus vehicle redemption allowance of \$500 or \$750⁴ (tax inclusive) (purchased vehicle dependant) to use toward the purchase, lease or finance of one eligible new Chevrolet vehicle.
- **The GM Card**—GM cardholders may redeem up to \$3500 GM Card Earnings (subject to Vehicle Redemption Allowances) toward the Total Purchase Price on eligible new GM vehicles.⁴ For full program details, please visit thegmcard.ca.

INFORMATION RESOURCES:

You can find more information about these programs from your Chevrolet dealer, or at these information centres:

- The GM Web site at gm.ca
- The GM Customer Care Centre at 1-800-GM-DRIVE (1-800-463-7483 or 1-800-263-3830 for TDD users)

A WORD ABOUT THIS BROCHURE

Some of the equipment shown or described throughout this brochure may be available at extra cost. We have tried to make this brochure comprehensive and factual. We reserve the right, however, to make changes at any time, without notice, in prices, colours, materials, equipment, specifications, models and availability. Specifications, dimensions, measurements, ratings and other numbers in this brochure and other printed materials provided at the dealership or affixed to vehicles are approximates based upon design and engineering drawings and prototypes and laboratory tests. Your vehicle may differ due to variations in manufacture and equipment. Since some information may have been adapted since the time of printing, please check with your Chevrolet dealer for complete details. General Motors of Canada Limited reserves the right to lengthen or shorten the model year for any product, for any reason, or to start and end model years at different times.

A WORD ABOUT ASSEMBLY

Chevrolet vehicles are equipped with engines and components produced and assembled by different operating units of General Motors, its subsidiaries and suppliers to GM worldwide. We sometimes find it necessary to produce Chevrolet vehicles with different or differently sourced components than originally scheduled. Since some options may be unavailable when your vehicle is assembled, we suggest that you verify that your vehicle includes the equipment you ordered or, if there are changes, that they are acceptable to you.

TRADEMARKS

©2014 General Motors of Canada Limited. All rights reserved. The marks appearing in this brochure, including but not limited to: Chevrolet, General Motors, GM, Silverado and their respective logos, emblems, slogans and vehicle model names and body designs; and other marks such as EcoTec3, IntelliLink and StabiliTrak are trademarks of General Motors and/or General Motors of Canada Limited, its subsidiaries, affiliates or licensors. OnStar, the OnStar emblem and Directions & Connections are registered trademarks of OnStar, LLC. The SiriusXM name and related logos are trademarks of SiriusXM Canada, Canadian Satellite Radio, Inc. Bluetooth is a registered trademark of Bluetooth SIG, Inc. Bose is a registered trademark of the Bose Corporation. iPhone and iPod are registered trademarks of Apple, Inc. Android is a trademark of Google, Inc. BlackBerry is a registered trademark of Research In Motion, Inc. Stitcher is a registered trademark of Stitcher, Inc. Rancho is a registered trademark of Tenneco, Inc.

¹Whichever comes first. Conditions and limitations apply, see dealer for details. ²Conditions and limitations apply. ³Subject to eligibility. ⁴Program subject to change.



VISIT US AT CHEVROLET.CA /

CENTURY
AUTO.CA

FIND **NEW** ROADS™ 