

Seven billion people. One road.

Movement is the universal language of personal freedom. Our founder Louis Chevrolet spoke it fluently. As a Swiss immigrant, he came to North America with a dream of racing cars. He wished for everyone – not just the rich or entitled – to experience the exhilaration he felt behind the wheel.

In 1911, he began building his first car. One hundred years later, a new Chevrolet is sold every 6.6 seconds. That amounts to 4.76 million vehicles in more than 140 countries – more than Louis Chevrolet could ever have imagined.

The depth of our heritage and passion is evident in everything we do here at Chevrolet. It's ingrained in the bold design, spirited performance, proven durability and exceptional value our drivers enjoy. It empowers us to be leaders in innovation. And it inspires us to continuously raise the bar – today, tomorrow and into what promises to be a bright future.

Currently, we are pioneering new propulsion technologies to meet the demanding energy and environmental needs of a global automotive brand. We're also employing alternative energy sources and investing in fuel-saving technologies to help reduce our carbon footprint with the goal of reducing 8 million metric tons of carbon dioxide emissions over the next few years.

Our global reach is expanding, yet our mission remains the same. We want every customer to feel like family – no matter where you are in the world. And no matter where you're going, we want you to enjoy the ride in a Chevrolet.

From the vision of one man to the movement of millions, it's been a remarkable journey. And at Chevrolet, we're just getting started.



facebook.com/
chevroletcanada



twitter.com/
chevroletcanada



youtube.com/
chevroletcanada



CHEVROLET.CA

CENTURY
AUTO.CA

190-13-B-001E

2013
SPARK



Go to getscanlife.com on your smartphone, download the free application then scan the code above for exclusive content.

SPARK YOUR WORLD

No time to sit still. There's an urban jungle to conquer. And no ordinary ride will do. You need a car with passport stamps. A globe-trotting, colour-rocking, tech-savvy fun jockey with worldly experience and wanderlust to boot. In other words, a car that fits your life, your friends and ridiculously tight parking spots. At last, the mini car that's built and loved around the world is coming to Canada. Introducing the all-new 2013 Chevrolet Spark.

STANDARD FEATURES THAT ARE ANYTHING BUT STANDARD

Ten airbags? Check. An awesome 5-year/160,000 km¹ transferable Powertrain Component Limited Warranty with Roadside Assistance and Courtesy Transportation programs? Yep. A six-month trial of OnStar^{®2} Roger that. Is Spark crazy generous when it comes to standard features? Indeed it is.

STUFF THAT MAY SURPRISE YOU (IN A GOOD WAY)

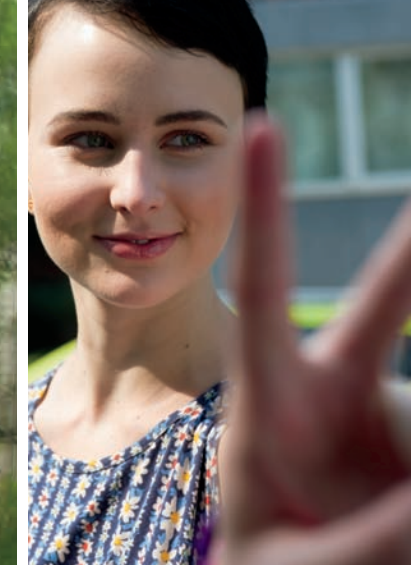
Predictable? Puh-lease. Spark offers features you might not expect to find in a car this size, including the available Chevrolet MyLink^{TM3} infotainment system, which features a 178 mm (7 in.) diagonal touch-screen display and cool available mobile apps that help you connect with your vehicle like never before.



Spark 2LT in Jalapeño.

CENTURY
AUTO.CA

¹ Whichever comes first. See your dealer for details. ² Visit onstar.ca for coverage map, details and system limitations. Services vary by model and conditions. ³ MyLinkTM functionality varies by model. Full functionality requires compatible Bluetooth[®] and smartphone, and USB connectivity for some devices. MyLinkTM on Spark does not include functionality such as enhanced voice recognition, Gracenote[®] and CD player.



SPARK YOUR SENSES



What if Spark could keep your smartphone ringing, music streaming, pictures on display, movies playing (when parked of course) and contacts Type-A organized? With the new available Chevrolet MyLink™ infotainment system, you can turn “what if” into what is – right at your fingertips.

¹ MyLink™ functionality varies by model. Full functionality requires compatible Bluetooth® and smartphone, and USB connectivity for some devices. MyLink™ on Spark does not include functionality such as enhanced voice recognition, Gracenote® and CD player. ² Not compatible with all devices. ³ Data plan rates apply. ⁴ Available in 10 Canadian provinces and the 48 contiguous United States. Subscription sold separately after trial period. Visit xmradio.ca for details. ⁵ BringGo app must be purchased separately. Requires compatible smartphone. Data plan rates apply. See dealer for more information. ⁶ Requires iPhone® or Android™ platform. ⁷ Available on select iPhone®, Android™ and BlackBerry® (interim availability) devices. Services vary by phone, vehicle and conditions. Requires active OnStar® subscription. ⁸ Included with 1LT and 2LT models only.

CENTURY
AUTO.CA



PRETTY SMART INTERFACE

Available Chevrolet MyLink™ uses Bluetooth® audio streaming to pull content from your compatible smartphone and integrate it into a vibrant colourful 178 mm (7 in.) touch-screen display so you can access it with the touch of a finger. It also connects with the available USB port,² so you can play your iPod® or even plug in a flash drive, park and watch a stored movie.



SEAMLESS STREAMING MUSIC

With a compatible smartphone and available Chevrolet MyLink™¹, you can stream music from Stitcher SmartRadio™⁵ anytime, anywhere.



THREE GLORIOUS MONTHS

Over a hundred channels of commercial-free music, sports, talk, comedy, news, weather and more are yours with a 3-month trial subscription to XM Satellite Radio™.⁴



MOTORCYCLE-INSPIRED SPEEDOMETER AND INSTRUMENT CLUSTER

APP HAPPY

NEW BRINGGO MOBILE APP

BringGo® recently published a new navigation app for your smartphone. Later in the model year, Chevrolet plans to make software available that will enable Spark owners to use this navigation app through the vehicle's available Chevrolet MyLink™ infotainment system.

MYCHEVROLET⁶ AND ONSTAR REMOTELINK™⁷ MOBILE APPS

Forgot where you parked? Lock your keys in the car? No worries. Together, these apps let you set parking reminders, lock and unlock doors,⁸ check vehicle condition, contact roadside assistance, schedule maintenance and more.

These mobile apps are available in the iTunes® store or Google Play.



AVAILABLE USB PORT²

LOTS OF STORAGE

SPARK A SCENE

Life is a blank canvas. It's up to you to make it art. Every move is a brush stroke. Every urban adventure is part of the bigger picture. Pick a hue that reminds you of you. And paint the town.

¹Extra-cost colour.



01 **TECHNO PINK**
Stylish



02 **SUMMIT WHITE**
Bright



03 **JALAPEÑO**
Spicy



04 **SALSA**
Hot



05 **LEMONADE**
Fresh



06 **BLACK GRANITE¹**
Deep



07 **DENIM**
Laid-back



08 **SILVER ICE**
Chill



INNER SPARK

Originality knows no bounds. That's why Spark styles on the inside as much as it does curbside. Go ahead, glam up the interior with available heated leatherette front seats and colour accents that dance across the dash and doors. Then bask in the glow of ice-blue ambient lighting. And take it all in.

CENTURY
AUTO.CA

Spark 2LT Interior with
Dark Pewter-colour Leatherette
Seats with Red Inserts and Red Trim.



TOTALLY FITTING

With four doors, five if you include the hatch, and 2444 litres (86.3 cubic feet) of passenger space, Spark allows you and three BFFs to easily get in and out without doing any crazy yoga moves.

CARRY ON

With 883 litres (31.2 cubic feet) of total cargo space,¹ Spark can fit a retro chair, random impulse buys – you fill in the blank. Think the Fiat 500, smart fortwo and Scion iQ can fit as much as Spark? No way. Spark also has a handy 60/40 flip-and-fold rear seat to make way for your stuff. So you can bring it on and on again.

¹With rear seat folded. ²Always use safety belts and the correct restraint for your child's age and size. Even in vehicles equipped with the passenger detecting system, children are safer when properly secured in a rear seat in the appropriate infant, child or booster seat. Never place a rear-facing infant restraint in the front seat of any vehicle equipped with a passenger airbag. See the Owner's Manual and the child safety seat instructions for more safety information. ³Visit onstar.ca for coverage map, details and system limitations. Services vary by model and conditions. OnStar® acts as a link to existing emergency service providers. Not available in certain areas.



RISE ABOVE

Standard Hill Start Assist never lets inclines drag you down. It keeps the brakes engaged for a split second while you transition from the brake pedal to the gas pedal, then automatically releases once you press down on the accelerator.



DRIVE SAFE

Spark helps protect against the unexpected with 10 standard airbags,² including knee airbags for the driver and front passenger. All-around, you're covered.



HOLD STEADY

When the roads aren't cooperating or Mother Nature is in a mood, you can count on the standard StabiliTrak® Electronic Stability Control System, anti-lock brakes and panic brake assist to help you stay the course.



REST ASSURED

Hopefully, you'll never have to use the OnStar® Automatic Crash Response® feature. But you'll be glad to know it's there. In many crashes, a trained OnStar® Advisor is immediately connected to your Spark and can use GPS technology to pinpoint your exact location. The OnStar® Advisor can call for help, even if you're unable to respond.

SPARK MODEL OVERVIEW



SPARK LS

Spark LS includes these standard features:

- 84 hp 1.2L ECOTEC® DOHC 4-cylinder engine
- Engine block heater
- GM Oil Life Monitoring System
- 5-speed manual transmission with Hill Start Assist (4-speed automatic available)
- 4-wheel Anti-lock Braking System (ABS)
- StabiliTrak® Electronic Stability Control System
- Traction control
- 15-in. split 5-spoke silver-painted aluminum wheels
- Battery run-down protection system
- Lower rocker mouldings, black
- Rear spoiler with integrated high-mounted LED stoplight
- Rear window wiper with washer
- 10 airbags
- Driver Information Centre
- Tire pressure monitoring system
- Auxiliary power outlet located in centre stack storage bin
- Power windows
- Tilt adjustable steering column
- Front bucket seats with driver 4-way manual seat adjuster
- Cloth seating surfaces
- 60/40 split-folding rear seatbacks
- Cargo convenience net
- 4-speaker audio system with AM/FM stereo and auxiliary audio input jack
- OnStar® with 6 months of the Directions & Connections Plan featuring Turn-by-Turn Navigation¹ and OnStar RemoteLink™.²



SPARK 1LT

Spark 1LT enhances LS features with:

- Power exterior mirrors
- Remote keyless entry system
- Content theft alarm
- Power door locks
- Air conditioning with air filtration system
- Unique centre stack trim
- Cruise control
- Carpeted front and rear floor mats
- Exterior temperature display
- Steering wheel-mounted Bluetooth®, cruise and audio system controls
- 6-speaker audio system with USB port³
- Bluetooth® hands-free phone connectivity and wireless audio streaming
- XM Satellite Radio™⁴
- Chevrolet MyLink™⁵ entertainment and communications system with 178 mm (7 in.) colour touch-screen display.



SPARK 2LT

Spark 2LT enhances 1LT features with:

- Sport front and rear body-coloured fascias
- Projector-style fog lights
- Chrome beltline mouldings
- Lower rocker mouldings, body-coloured
- Silver-painted roof rails
- 15-in. machined-face aluminum wheels with dark grey-painted pockets
- Chrome rear liftgate handle
- Chrome exhaust outlet
- Leatherette seating surfaces
- Heated driver and front-passenger seats
- Leather-wrapped steering wheel with Bluetooth®, cruise and audio system controls.

SPARK STANDARD AND OPTIONAL EQUIPMENT

SAFETY AND SECURITY	LS	1LT	2LT
Airbags <ul style="list-style-type: none">– driver and front-passenger, dual-stage, frontal with passenger detecting system and airbag suppression– driver and front-passenger, seat-mounted side-impact– driver and front-passenger, knee protection– front-to-rear outboard seating positions, head curtain side-impact– rear passenger outboard seating positions seat-mounted side-impact	S	S	S
OnStar® – In-Vehicle Communications and Assistance Service, includes 6 months of the Directions & Connections Plan with Turn-by-Turn Navigation ¹ and OnStar RemoteLink™	S	S	S
Safety restraints <ul style="list-style-type: none">– 3-point belts for all seating positions, front safety belt pre-tensioners, dual-mode retractors and shoulder belt height adjusters– LATCH (Lower Anchors and top Tethers for Children), rear seats	S	S	S
Security system – content theft alarm, audible/visible	–	S	S
StabiliTrak® – Electronic Stability Control System with brake assist	S	S	S
Theft-deterrent system – electronic immobilizer	S	S	S
Traction control – electronic, full-function, all-speed	S	S	S

MECHANICAL			
Battery – with run-down protection	S	S	S
Brakes <ul style="list-style-type: none">– power, front disc/rear drum– 4-wheel Anti-lock Braking System (ABS)	S	S	S
Drive – front-wheel	S	S	S
Engine <ul style="list-style-type: none">– 1.2L ECOTEC® I-4 with MFIHorsepower – 84 @ 6400 rpm;Torque – 83 lb.-ft. @ 4200 rpm	S	S	S
Engine – block heater	S	S	S
Exhaust system <ul style="list-style-type: none">– aluminized stainless steel– single chrome outlet	S	–	S
Steering – power, electric, rack-and-pinion	S	S	S
Suspension – front MacPherson strut/rear compound crank	S	S	S
Transmission <ul style="list-style-type: none">– 5-speed manual with overdrive, shift indicator and Hill Start Assist– 4-speed automatic with overdrive and brake shift interlock	S	S	S

EXTERIOR			
Bumpers <ul style="list-style-type: none">– front and rear, body-coloured– sport, front and rear, body-coloured with unique upper/lower grille insert	S	S	–
Door handles – body-coloured	S	S	S
Glass – Solar-Ray, tinted	S	S	S
Liftgate handles <ul style="list-style-type: none">– body-coloured– chrome	S	S	–
Lights <ul style="list-style-type: none">– halogen, daytime running lights with automatic light control– fog lights	S	S	S
Mirrors <ul style="list-style-type: none">– left and right manual, body-coloured– power remote control, body-coloured	S	–	–
Mouldings – lower rocker, body-coloured	–	–	S
Roof rails – silver painted	–	–	S
Spoiler – roof-mounted with integrated LED centre high-mounted stop light	S	S	S
Tires <ul style="list-style-type: none">– P185/55R15 all-season**– tire inflator kit	S	S	S
Wheels <ul style="list-style-type: none">– 15" x 6.0" split 5-spoke silver-painted aluminum (A)– 15" x 6.0" machined-face aluminum with dark grey painted pockets (B)	S	S	–
Windshield wipers <ul style="list-style-type: none">– 2-speed with variable delay (intermittent)– rear with washer	S	S	S

INTERIOR	LS	1LT	2LT
Cargo convenience net	S	S	S
Climate control <ul style="list-style-type: none">– heater only, exterior air with fan– manual, single zone air conditioning– air filtration system	S	–	–
Console – rear with centre storage tray	S	S	S
Cruise control	O ¹	S	S
Defogger – electric rear window	S	S	S
Floor mats – front and rear, carpeted	–	S	S
Instrumentation <ul style="list-style-type: none">– analogue speedometer (includes digital tachometer, odometer, trip odometer and fuel gauges)– Driver Information Centre (includes GM Oil Life Monitoring System, fuel range, driving time and average vehicle speed)– exterior temperature display– tire pressure monitoring system	S	S	S
Liftgate – release, power	S	S	S
Lighting <ul style="list-style-type: none">– interior overhead courtesy with OnStar® controls– rear cargo area	–	S	S
Locks <ul style="list-style-type: none">– power, programmable with lock-out protection and emergency unlock– remote keyless entry with panic feature	–	S	S
Power outlets – 12-volt, 1 in front centre stack storage bin	S	S	S
Retained accessory power	S	S	S
Steering column – tilt adjustable	S	S	S
Steering wheel <ul style="list-style-type: none">– 3-spoke, with Bluetooth®, cruise and audio system controls– 3-spoke leather-wrapped, with Bluetooth®, cruise and audio system controls	O ¹	S	–
Sunshades <ul style="list-style-type: none">– LH and RH padded; non-illuminated covered vanity mirror for driver side only– LH and RH padded; non-illuminated covered vanity mirrors	S	–	–
Windows – power	S	S	S

SEATS			
Reclining front bucket seats with cloth	S	S	–
Reclining front bucket seats with leatherette seating surfaces	–	–	S
Heated driver and front-passenger seats	–	–	S
Manual 4-way driver seat adjuster	S	S	S
Vertical adjusting front seat head restraints	S	S	S
Driver's folding inboard armrest	S	S	S
Seatback – rear, 60/40 flip-and-fold with vertical adjusting head restraints	S	S	S

ENTERTAINMENT			
All Spark audio systems include an electronically tuned AM/FM stereo with seek up/down, scan, auxiliary audio input jack and digital clock	S	–	–
Chevrolet MyLink™ Touch, AM/FM stereo with seek, up/down, scan and digital clock, includes Bluetooth® streaming audio for music and select phones; voice recognition for phone; Stitcher™ smartphone compatible; all functions controlled through 178 mm (7 in.) colour touch-screen display	O ¹	S	S
USB port ²	O ¹	S	S
4-speaker audio system	S	–	–
6-speaker audio system	O ¹	S	S
Bluetooth® <ul style="list-style-type: none">– hands-free phone connectivity– wireless digital audio streaming	O ¹	S	S
XM Satellite Radio™ ^{4†}	O ¹	S	S
Chevrolet MyLink™ Touch Audio and Connectivity Package – includes Chevrolet MyLink™ Touch Audio through 178 mm (7 in.) colour touch-screen display, 6-speaker audio system, XM Satellite Radio™,† Bluetooth® hands-free phone and wireless audio connectivity, voice recognition for phone, Stitcher™ smartphone compatible, USB port ² and steering wheel-mounted Bluetooth®, cruise and audio system controls	O	–	–

DIMENSIONS



EXTERIOR, mm (in.)	
Wheelbase (A)	2375 (93.5)
Length (B)	3675 (144.7)
Width (C)	1598 (62.9)
Height (D)	1549 (61.0)
Front tread (E)	1415 (55.7)
Rear tread (F)	1410 (55.5)

INTERIOR, mm (in.) front/rear	
Headroom	1001/947 (39.4/37.3)
Legroom	1067/894 (42.0/35.2)
Shoulder room	1288/1262 (50.7/49.7)
Hip room	1219/1206 (48.0/47.5)

CAPACITIES/WEIGHT	
Cargo area, L (cu. ft.) <ul style="list-style-type: none">– with rear seats up– with rear seats folded	322.8 (11.4) 883.6 (31.2)
Fuel tank, L (imp. gal.)	34.8 (9.2)
Curb weight (est.), kg (lb.) <ul style="list-style-type: none">– manual transmission– automatic transmission	1029 (2269) 1060 (2337)

TOWING
Not recommended.

¹ Visit onstar.ca for coverage map, details and system limitations. Services vary by model and conditions. ² Available on select iPhone®, Android™ and BlackBerry® (interim availability) devices. Services vary by phone, vehicle and conditions. Requires active OnStar® subscription. ³ Not compatible with all devices. ⁴ Available in 10 Canadian provinces and the 48 contiguous United States. Subscription sold separately after trial period. Visit xmradio.ca for details. ⁵ MyLink™ functionality varies by model. Full functionality requires compatible Bluetooth® and smartphone, and USB connectivity for some devices. MyLink™ on Spark does not include functionality such as enhanced voice recognition, Gracenote® and CD player.

WARRANTY

IT ISN'T FINE PRINT – IT'S A COMMITMENT.

Chevrolet puts the same care into its warranty and support programs that it does into the cars and trucks it builds. So you can add peace of mind knowing that every Chevrolet is backed by this comprehensive coverage:

- 3-year/60,000 km New Vehicle Limited Warranty*
- 5-year/160,000 km Powertrain Component Limited Warranty, with \$0 deductible on repairs and the warranty is fully transferable at no charge*
- 5-year/160,000 km Courtesy Transportation*
- 5-year/160,000 km 24/7 Roadside Assistance*
- 6-year/160,000 km rust-through perforation coverage*
- 8-year/130,000 km coverage on catalytic converters and powertrain control modules (PCMs).*

* Whichever comes first. Conditions and limitations apply, see dealer for details.

OTHER OWNERSHIP PRIVILEGES AND PROGRAMS:**

- **GM Protection Plan (GMPP)** – the only extended service plan backed by the resources and commitment of General Motors, GMPP may be purchased at the time of sale or subsequently during the New Vehicle Limited Warranty period
- **GM Goodwrench Service** – with GM-certified technicians and GM-approved parts, nobody knows your GM vehicle better
- **Chevrolet Owner Centre** – as an owner, take advantage of the Chevrolet Owner Centre. This online owner's destination gives you access to coupons, contests, current offers and the latest driving and maintenance tips. Find out more at ChevroletOwner.ca

** Conditions and limitations apply.

TO HELP YOU PURCHASE OR LEASE A NEW VEHICLE:

- **Purchase Financing and Leasing** – on the spot financing, see dealer for full details†
- **GM Student Bonus Program** – students or recent graduates of high school, college or university** may be entitled to receive a Student Bonus vehicle redemption allowance of \$500 or \$750†† (tax inclusive) (purchased vehicle dependant) to use towards the purchase, lease or finance of one eligible new Chevrolet vehicle
- **The GM Card** – GM cardholders may redeem up to \$3500 GM Card® Earnings (subject to Vehicle Redemption Allowances) toward the Total Purchase Price on eligible new GM vehicles.†† For full program details please visit thegmcard.ca

† Subject to eligibility. †† Program subject to change. ** Conditions and limitations apply.

INFORMATION RESOURCES:

You can find more information about these programs from your GM dealer, or at these information centres:

- The GM website at gm.ca
- The GM Customer Care Centre at 1-800-GM-DRIVE (1-800-463-7483 or 1-800-263-3830 for TDD users).

A WORD ABOUT THIS BROCHURE

Some of the equipment shown or described throughout this brochure may be available at extra cost. We have tried to make this brochure comprehensive and factual. We reserve the right, however, to make changes at any time, without notice, in prices, colours, materials, equipment, specifications, models and availability. Specifications, dimensions, measurements, ratings and other numbers in this brochure and other printed materials provided at the dealership or affixed to vehicles are approximates based upon design and engineering drawings and prototypes and laboratory tests. Your vehicle may differ due to variations in manufacture and equipment. Since some information may have been adapted since the time of the printing, please check with your GM dealer for complete details. General Motors of Canada Limited reserves the right to lengthen or shorten the model year for any product, for any reason, or to start and end model years at different times.

A WORD ABOUT ASSEMBLY

GM vehicles are equipped with engines and components produced and assembled by different operating units of General Motors, its subsidiaries and suppliers and these engines and components may change or be obtained from different sources from time to time. All such engines and components are approved for use in GM vehicles. Certain equipment ordered may be unavailable at the time of assembly and we suggest that you verify that your vehicle includes the equipment you ordered, or if there are changes, that they are acceptable to you.

TRADEMARKS

The marks appearing in this brochure including, but not limited to: General Motors, GM, Chevrolet, the Chevrolet emblem, Spark, and their respective logos, emblems, slogans and vehicle model names and body designs; and other marks such as ECOTEC, MyLink and StabiliTrak are trademarks of General Motors and/or General Motors of Canada Limited, its subsidiaries, affiliates or licensors.

OnStar and the OnStar emblem are registered trademarks and RemoteLink is a trademark of OnStar, LLC.

The XM name and related logos are trademarks of XM Canada, Canadian Satellite Radio Inc.

iPhone, iPod and iTunes are trademarks of Apple Computer Inc. registered in the U.S. and other countries.

YouTube is a registered trademark and Android is a trademark of Google Inc.

BlackBerry is a registered trademark of Research In Motion, Limited.

Bluetooth is a registered trademark of Bluetooth SIG Inc.

Stitcher is a trademark of Stitcher SmartRadio, Inc.

Gracenote is a registered trademark of Sony Corporation of America.

Facebook is a registered trademark of Facebook, Inc.

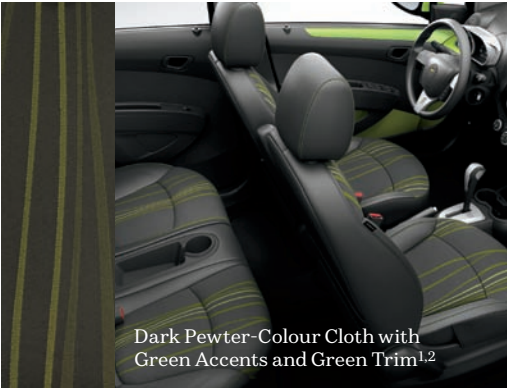
Twitter is a trademark of Twitter, Inc.

COPYRIGHT

©Copyright 2012 General Motors of Canada Limited. All Rights Reserved. All text, images, graphics, and other materials in this brochure are subject to the copyright and other intellectual property rights of General Motors and/or General Motors of Canada Limited. These materials may not be reproduced, distributed or modified without the express written permission of General Motors and/or General Motors of Canada Limited.

Printed in USA, September 2012.

INTERIOR COLOURS



Dark Pewter-Colour Cloth with Green Accents and Green Trim^{1,2}



Dark Pewter-Colour Cloth with Yellow Inserts and Yellow Trim^{1,3}



Dark Pewter-Colour Cloth with Silver-Colour Accents and Blue Trim^{1,4}



Dark Pewter-Colour Cloth with Silver-Colour Accents and Silver-Colour Trim^{1,5}



Dark Pewter-Colour Leatherette with Light Titanium Colour Inserts and Silver-Colour Trim^{6,7}



Dark Pewter-Colour Leatherette and Silver-Colour Trim^{6,8}



Dark Pewter-Colour Leatherette and Green Trim^{2,6}



Dark Pewter-Colour Leatherette with Red Inserts and Red Trim^{6,9}

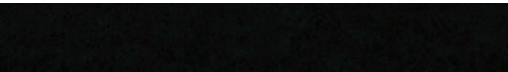
EXTERIOR COLOURS



GAN – Silver Ice



GAR – Black Granite*



GAZ – Summit White



GGE – Salsa



GJT – Jalapeño



GQL – Techno Pink



GUC – Denim



GUD – Lemonade



WHEELS



15" Split 5-Spoke Silver-Painted Aluminum (standard on LS and 1LT)



15" Machined-Face Aluminum with Dark Grey-Painted Pockets (standard on 2LT)

* Extra-cost colour: **1** Available on LS and 1LT. **2** Requires Jalapeño exterior colour. **3** Requires Lemonade exterior colour. **4** Requires Denim exterior colour. **5** Not available with Jalapeño, Denim or Lemonade exterior colours. **6** Available on 2LT. **7** Requires Silver Ice, Summit White or Techno Pink exterior colours. **8** Requires Black Granite, Denim or Lemonade exterior colours. **9** Requires Salsa exterior colour.