



2012 CHEVROLET  
**ORLANDO**

**CENTURY**  
**AUTO.CA**



**DRIVING OUR WORLD FORWARD**



# IT MAKES ROOM FOR YOUR LIFE – AND STYLE.



Run down the list of essentials for your next family vehicle. Compact, yet with room for seven. All the latest in safety features. Fuel efficiency. Connectivity. You don't have to stop there – not after the introduction of the all-new 2012 Chevrolet Orlando. It demonstrates how innovative design can transform the once ordinary confines of the family vehicle to create a totally different experience for driver and passengers alike. That is made clear by a quick look at some of the vital statistics, starting with overall length. Orlando is remarkably compact for a vehicle that can transport up to seven people in comfort. Just as Orlando is amazingly space efficient, its award-winning 174 hp 2.4L ECOTEC®

four-cylinder engine is also impressively fuel efficient – in fact it has the best highway fuel efficiency of any seven-seater.\* Driver control features like StabiliTrak® and traction control add to the safety and confident handling. And the standard OnStar®\*\* system adds real peace of mind. All in a vehicle that stands out from the crowd with dynamic lines and bold styling. The vehicle designed for your life and style. Already loved in 17 countries around the world. The all-new 2012 Orlando.

\*2012 Orlando, equipped with 6-speed manual transmission, fuel consumption ratings based on GM testing in accordance with approved Transport Canada test methods. Competitive fuel consumption ratings based on National Resources Canada's 2011 Fuel Consumption Guide. Your actual fuel consumption may vary.

\*\*Visit onstar.ca for coverage map, details and system limitations. Services vary by model and conditions.

***“TWO CHARACTERISTICS OF THE ORLANDO SEEMED COMMONLY HELD BY THE JOURNALISTS ON THIS MEDIA DRIVE – HOW QUIET THE CAR IS, AND HOW GOOD THE RIDE IS.”***

***– JIM KENZIE, TORONTO STAR, AUGUST 2011***

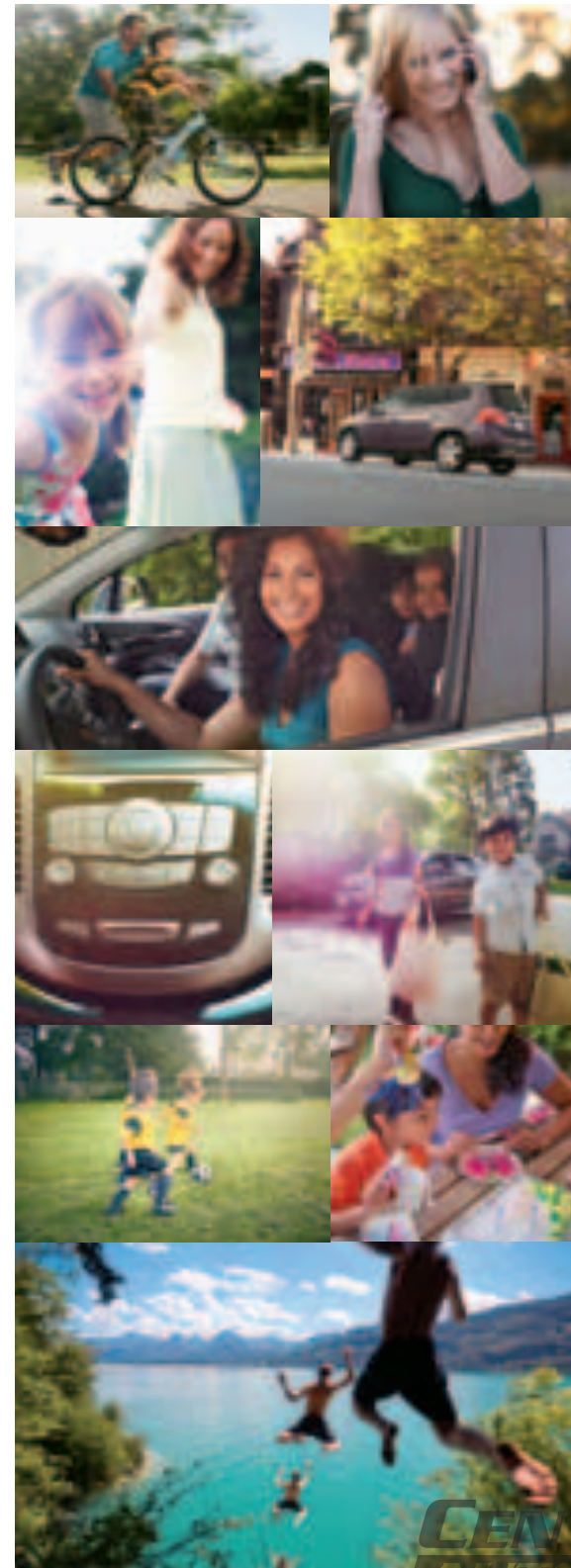
***“THE ORLANDO OFFERS A WELL-BALANCED COMBINATION OF FUNCTIONAL VIRTUES IN AN ATTRACTIVE AND ATTRACTIVELY PRICED PACKAGE.”***

***– JIM KENZIE, TORONTO STAR, AUGUST 2011***

***“2012 CHEVROLET ORLANDO: ORLANDO A MAGIC KINGDOM FOR FAMILIES ON THE GO.”***

***– AUTONET.CA, AUGUST 2011***

chevrolet.ca



**CENTURY  
AUTO.CA**

Orlando LTZ, shown in Smokey Grey Metallic.







**CENTURY**  
**AUTO.CA**

***"A PEOPLE MOVER ANY BUSY MOM WILL LOVE."***

*- PETRINA GENTILE, GLOBE AND MAIL, AUGUST 2011*

## TURN EVERY TRIP INTO A VACATION.

The name Orlando conjures up one of the ultimate in family fun destinations. The vehicle that bears that name is designed to live up to that concept. It has the capacity to carry up to seven people in three rows of comfortable seating – it also has the capacity to do so much more, from accommodating the stuff your family brings along, to entertaining everyone along the way. Four-way front bucket seat adjusters

ensure the right support for lengthy drives – anyone hear those words: road trip? You can even upgrade to first class with the LTZ model that features heated front bucket seats with power six-way driver's seat adjusters, in addition to automatic climate controls that let you set a temperature and let the system do the rest. Book your next family trip – inside the all-new Orlando.



Orlando's interior provides excellent flexibility. The second-row seats are split-folding to allow you to increase cargo capacity, or create easier access to the third row.







People mover. Cargo hauler. Orlando is both. And it makes the large rear cargo area easily accessible through the wide-opening rear liftgate.



***“FAMILY VALUES UNDERSCORE THE ALL-NEW, SEVEN PASSENGER ORLANDO.”***  
*– ANDREW McCREDIE, VANCOUVER SUN, AUGUST 2011*

# THE MORE-THAN-JUST-FAMILY VEHICLE.

A family consists of more than just people – it’s a household with everything that goes along with it. From groceries to snowboards – camping gear to hockey bags. You need a vehicle that transports not just your family members and friends – but also your lifestyle. Orlando is with you every step, every move, every game, every holiday along the way. For openers, there are wide-opening rear doors

for easy access to the second and third rows. Orlando adapts to your changing itinerary, with an easily reconfigured interior that features split-folding second and third-row seating that enables you to combine people and their things together effortlessly. You can fold both rows down flat to open up an enormous 1594 L of cargo room. Life moves fast – Orlando is the family vehicle that can keep up.



Below: With all seats in the upright position, Orlando seats seven. Both the second and third-row seats are split-folding, so you have a huge array of seating plans available.





# FAMILY VEHICLE. DRIVER'S VEHICLE. NO LONGER A CONTRADICTION.

Make no mistake: Orlando is designed and engineered with an understanding that while family is a priority, you never want to lose sight of your joy of driving. That is clear the moment you focus on the dual-cockpit design and glance over at the stylish ambient blue instrument panel lighting. Look a little closer

and take note of the Driver Information Centre that keeps track of everything from average fuel efficiency to the status of the GM Oil Life Monitoring System. You can even keep track of the little ones in the rear seats, thanks to the standard child-view mirror above the rear-view mirror. You can adjust the steering wheel

to your desired position using the standard tilt function or the tilt and telescopic steering column on LT and LTZ models. Then shift the six-speed manual transmission or available six-speed automatic into gear and feel a brand of performance that is unusual in a vehicle this practical. Welcome to Orlando.



1. The standard analogue gauge cluster is complemented by the robust Driver Information Centre.
2. You can keep track of the little ones in the rear seats with the handy child-view mirror, located above the interior rear-view mirror.



Orlando LTZ, shown in Jet Black with available leather seating surfaces.



# STAY PLUGGED IN.

Communications and entertainment go mobile in Orlando. You can listen to your favourite tunes on the standard six-speaker sound system that includes a CD player, MP3 playback,an auxiliary audio input jack and SiriusXM Satellite Radio™\*. You can choose additional electronic equipment to stay connected and entertained.

\* Available in 10 Canadian provinces and the 48 contiguous United States. Subscription sold separately after trial period. Visit xmradio.ca for details.



**SiriusXM Satellite Radio™\***  
You can choose from up to 130 channels of SiriusXM Satellite Radio™. It's standard on all models – and it offers everything from a vast range of musical genres, to news, talk, comedy and sports channels – including more than 1000 NHL games.



**Navigation Sound System**  
You can be entertained and informed by the navigation sound system that features a 178 mm (7") touch-screen display. The technology includes a CD player, MP3 playback, plus a GPS-based navigation system. Available on LTZ models.



**USB Port**  
A USB port enables you to operate an MP3 player and access music on a flash drive. Standard on 2LT and LTZ and available on 1LT models.



**Bluetooth®**  
Bluetooth® hands-free wireless connectivity enables you to make, answer and end calls on compatible mobile phones, using available steering wheel-mounted controls. Standard on 2LT and LTZ and available on 1LT models.



OnStar® and 6 months of the Directions & Connections Plan\* are standard on all Orlando models. Take a look at the range of safety, security, information and communications features that are included. To find out more about the range of OnStar® features and services available, please visit [onstar.ca](http://onstar.ca)

**Security Services**  
If your vehicle is stolen, onboard OnStar® GPS technology helps police locate it. OnStar® also includes remote door unlock, plus remote horn and light services.



**Vehicle Diagnostics**  
You can receive monthly emails updating the status of your vehicle's key operating systems.



**Turn-by-Turn Navigation**  
It's the simplest and smartest navigation system available. Simply push the OnStar® button and tell an Advisor where you are going. Instructions are then downloaded to your vehicle, giving you turn-by-turn directions to your destination.



**Automatic Crash Response**  
The moment built-in OnStar® sensors detect a collision, they automatically alert an OnStar® Advisor of critical details, such as the type and severity of the crash – and your exact location. The Advisor relays the information immediately to emergency responders, directing them to your location and preparing them for what to expect at the scene.\*



**Emergency Services**  
Press the red Emergency button, and you'll get a priority connection to a specially trained Advisor who will contact the appropriate emergency service provider and guide them right to your location.\*



**Hands-Free Calling**  
This feature enables you to make and receive calls, while keeping your eyes on the road and your hands on the steering wheel. It's not only safer and more convenient, it's also the law in many Canadian provinces.



## OnStar RemoteLink™ Mobile App



OnStar RemoteLink™ places the power of OnStar® right in the palm of your hand. Whether you're across the street or across the country, OnStar RemoteLink™ gives you unparalleled control and unprecedented connectivity to perform a series of functions remotely from your iPhone® or select Android™ devices.

Download and register the app at [onstar.ca](http://onstar.ca) and you'll have access to the following functions right at your fingertips:

- Lock or unlock your doors from any distance
- Start your engine remotely (if equipped)
- Activate your horn and lights to find your vehicle
- View real-time fuel information (range to empty, fuel remaining, current fuel consumption and lifetime fuel consumption)
- Check your remaining oil life and tire pressure
- Access your OnStar® account information
- Contact an OnStar® Advisor, Roadside Assistance or your preferred Chevrolet dealer.



\* Visit [onstar.ca](http://onstar.ca) for coverage map, details and system limitations. Services vary by model and conditions. OnStar® acts as a link to existing emergency service providers.  
\*\* Available in 10 Canadian provinces and the 48 contiguous UnitedStates. Subscription sold separately after trial period. Visit [xmradio.ca](http://xmradio.ca) for details.





## CONTROL + PROTECTION = PEACE OF MIND.

With up to seven people on board, safety is never far from your mind. So you'll be pleased to learn that Orlando is equipped with a series of safety features that will contribute to your peace of mind. Your first line of defence is provided by a host of driver control technologies that help you avoid an incident. They include four-wheel disc brakes with ABS and panic brake assist, plus electronic traction control and StabiliTrak®. Electronic stability control systems like

StabiliTrak® have been proven to reduce the risk of a fatal single-vehicle crash by a remarkable 63 percent.\* If a collision cannot be avoided, Orlando protects the integrity of the passenger compartment with a reinforced steel safety cage and six standard airbags.\*\* In fact, the 2012 Chevrolet Orlando received a 5-Star Euro NCAP Safety rating†. Travel with a full complement of passengers – and the reassurance of a vehicle engineered and equipped with safety in mind. Orlando.

\* According to information published by the U.S. Department of Transportation's National Highway Traffic Safety Administration, July 2007.

\*\* A NOTE ON CHILD SAFETY: Always use safety belts and proper child restraints, even in vehicles equipped with airbags. Refer to the vehicle Owner's Manual and child safety seat instructions for more information.

† Euro NCAP ratings are part of the European New Car Assessment Programme (NCAP) (www.euroncap.com). 2012 Chevrolet Orlando equipped with the 1.8L petrol engine tested during 2011 calendar year testing.



## THE PERFORMANCE YOU WANT. THE FUEL EFFICIENCY YOU DEMAND.

Fuel efficiency isn't a bonus or, something that's nice to have. It's mandatory with gas prices as high as they are. Orlando was engineered from the get-go with that reality in mind. The real bonus is that Orlando delivers extraordinary fuel efficiency for a seven-seater, yet with a level of performance that satisfies your desire for a fulfilling drive. That's what sets Orlando's 2.4L ECOTEC® dual overhead cam four-cylinder engine apart. The highway fuel consumption rating

is an impressive 6.7 L/100 km – the best efficiency of any seven-seater\*. The output of 174 horsepower is equally noteworthy. That combination is thanks to advanced engine management technologies like Direct Injection and Variable Valve Timing (VVT) that optimize both power and fuel efficiency. Six-speed manual and automatic transmissions also contribute to the frugal fuel consumption stats. You want it. You demand it. You can get it all from Orlando.

1. The 2.4L ECOTEC® dual overhead cam four-cylinder engine was named one of Ward's 10 Best Engines for 2011.

2. A six-speed manual transmission is standard on LS, 1LT and 2LT models. A six-speed automatic transmission (shown) is standard on LTZ and available on 1LT and 2LT models. Both contribute to Orlando's excellent fuel efficiency.

\* 2012 Orlando, equipped with 6-speed manual transmission, fuel consumption rating based on GM testing in accordance with approved Transport Canada test methods. 6.9 L/100 km with 6-speed automatic transmission. Your actual fuel consumption may vary.





# ORLANDO MODEL OVERVIEW

## ORLANDO LS

Orlando LS includes these standard features:

- 174 hp 2.4L ECOTEC® 4-cylinder engine with Direct Injection and Variable Valve Timing (VVT)
- Engine block heater
- GM Oil Life Monitoring System
- 6-speed manual transmission
- MacPherson strut front and compound-crank rear suspension
- 4-wheel disc brakes
- 4-wheel anti-lock braking system (ABS) with panic brake assist
- StabiliTrak® electronic stability control system
- Traction control
- 16-in. wheels with painted wheel covers
- Vehicle content theft alarm and electronic immobilizer
- 6 airbags
- Driver Information Centre
- Power windows with driver and front-passenger express up/down
- Child-view mirror
- Power door locks and power rear door child-security locks
- Remote keyless entry system
- Tilt steering column
- Cloth front bucket seats with manual 4-way adjusters
- 60/40 split-folding 3-passenger 2nd-row seat
- 50/50 split-folding 2-passenger 3rd-row seat
- Illuminated vanity mirror on LH and RH sunshades
- 6-speaker sound system with CD player, MP3 playback and auxiliary audio input
- Graphical audio system display
- SiriusXM Satellite Radio™\*\*
- OnStar® with 6 months of the Directions & Connections Plan featuring Turn-By-Turn Navigation\* and OnStar RemoteLink™.

## ORLANDO 1LT

Orlando 1LT enhances LS features with:

- Heated, power exterior mirrors, body-colour
- Deep-tinted glass on all windows behind front doors
- Body-colour door handles
- Tilt and telescopic steering column
- Cruise control
- Premium cloth seating surfaces
- Driver's seat armrest
- Air conditioning, manual with air filtration system
- Front centre console with closed storage
- Carpeted floor mats.

## ORLANDO 2LT

Orlando 2LT enhances 1LT features with:

- 16-in. aluminum wheels
- Fog lights
- Tire pressure monitoring system
- Leather-wrapped steering wheel with audio system controls
- Bluetooth® hands-free phone connectivity
- USB port.

## ORLANDO LTZ

Orlando LTZ enhances 2LT features with:

- 6-speed automatic transmission
- 18-in. aluminum wheels
- Body-colour door handles with chrome strip
- Bodyside chrome finish moulding and chrome liftgate handle
- Remote vehicle starter system
- Ultrasonic rear parking assist
- Automatic climate control system with rear controls
- Heated front bucket seats
- Power 6-way driver seat
- Ambient interior lighting
- Auto-dimming interior rear-view mirror
- Cargo area security cover
- Cargo convenience net.

# IT'S TIME TO ACCESSORIZE.

Now's the time to put your personal stamp on your vehicle with the addition of Chevrolet Accessories. They are the only accessories that were created as part of the Orlando development process. That ensures they offer the same quality of fit, finish and function as the rest of your vehicle. They are backed by the 3-year/60,000 km New Vehicle Limited Warranty\* and can be included in your lease or finance agreement. Ask your dealer for a complete list of the Chevrolet Accessories available for Orlando, or visit **chevrolet.ca**

\* Whichever comes first, when permanently installed by the dealer at the time you purchased your new vehicle, or for the remainder of the New Vehicle Limited Warranty if installed after the time of your vehicle purchase, but no less than 12 months.

Chevrolet Accessories available for Orlando include:

- Painted bodyside mouldings
- Removable roof rack cross rails
- Economy carpet floor mats
- Premium carpet floor mats
- All-weather premium floor mats
- Smokers' package
- Custom-moulded splash guards
- Cargo net
- Roof spoiler
- Deflector package.



ACCESSORIES



CENTURY  
AUTO.CA



ORLANDO STANDARD AND OPTIONAL EQUIPMENT

SAFETY AND SECURITY	LS	1LT	2LT	Ltz
<b>Airbags</b> – driver and front passenger, frontal with passenger sensing system – driver and front-passenger, seat-mounted side-impact – front-to-rear, head curtain side-impact for outboard seating positions	S	S	S	S
<b>Child-view mirror</b>	S	S	S	S
<b>Door locks</b> – rear doors, electronic, child-security	S	S	S	S
<b>OnStar®</b> – In-Vehicle Communications and Assistance Service, includes 6 months of the Directions & Connections Plan featuring Turn-by-Turn Navigation* and OnStar RemoteLink™	S	S	S	S
<b>Restraints, head</b> – adjustable in all positions	S	S	S	S
<b>Safety restraints</b> – 3-point, front and rear, all positions with front pre-tensioners and height adjustment – LATCH (Lower Anchors and top Tethers for Children), 2nd-row outboard seating positions	S	S	S	S
<b>StabiliTrak®</b> – electronic stability control system	S	S	S	S
<b>Theft-deterrent system</b> – electronic immobilizer and vehicle content theft alarm	S	S	S	S
<b>Traction control</b> – electronic	S	S	S	S

MECHANICAL				
<b>Engine</b> – 2.4L ECOTEC® DOHC I-4 VVT with Direct Injection; Horsepower – 174 @ 6700 rpm; Torque – 171 lb.-ft. @ 4900 rpm	S	S	S	S
<b>Battery</b> – with run-down protection	S	S	S	S
<b>Block heater</b>	S	S	S	S
<b>Brakes</b> – power, 4-wheel disc – 4-wheel anti-lock braking system (ABS) – panic brake assist	S	S	S	S
<b>Drive</b> – front-wheel	S	S	S	S
<b>Steering</b> – power, electric with variable assist	S	S	S	S
<b>Suspension</b> – front MacPherson strut/rear compound-crank	S	S	S	S
<b>Transmission</b> – 6-speed manual with overdrive – 6-speed automatic with overdrive	S	S	S	–
<b>Vehicle starter system</b> – remote	–	0 <sup>1</sup>	0 <sup>1</sup>	S

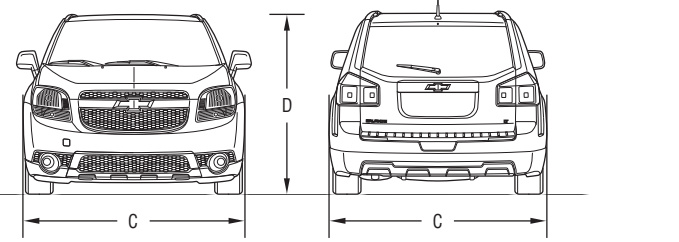
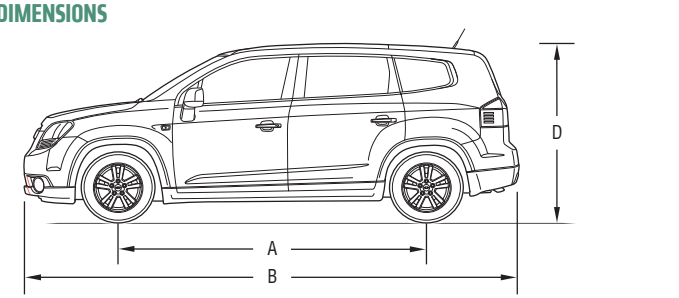
EXTERIOR	LS	1LT	2LT	Ltz
<b>Antenna</b> – roof-mounted	S	S	S	S
<b>Defogger</b> – electric rear window	S	S	S	S
<b>Door handles</b> – black – body colour – body colour with chrome strip	S	–	–	–
<b>Fog lights</b> – halogen	–	–	S	S
<b>Glass</b> – Solar-Ray, tinted – deep-tinted, all windows behind front doors	S	S	S	S
<b>Headlights</b> – dual halogen, daytime running lights with automatic light control	S	S	S	S
<b>Liftgate</b> – rear, manual	S	S	S	S
<b>Mirrors</b> – manual adjusting and folding, black – manual folding, power remote control, heated, body-colour	S	–	–	–
<b>Mouldings</b> – bodyside, black – bodyside, chrome	S	S	S	–
<b>Spare tire</b> – full-size, mounted on steel wheel	S	S	S	S
<b>Sunroof</b> – power, tilt-sliding glass panel with express-open feature and wind deflector	–	–	0	0
<b>Tires</b> – P215/60R16 all-season** – P235/45R18 all-season**	S	S	S	–
<b>Wheels</b> – 16" x 6.5" steel with painted silver wheel cover (A) – 16" x 6.5" aluminum (B) – 18" x 8" aluminum (C)	S	S	–	–
<b>Windshield wipers</b> – 2-speed with variable delay (intermittent), mist and wash	S	S	S	S
<b>Wiper/washer</b> – rear-window (intermittent)	S	S	S	S
<b>Ultrasonic rear parking assist</b> – rear obstacle detection with audible warning	–	–	0	S

INTERIOR	LS	1LT	2LT	Ltz
<b>Climate control</b> – air conditioning, manual with air filtration system – automatic with air filtration system	0	S	S	–
<b>Console</b> – front floor with open storage and dual cupholders – front floor with closed storage and dual cupholders	S	–	–	–
<b>Cruise control</b>	–	S	S	S
<b>Floor mats</b> – front and rear, carpeted	–	S	S	S
<b>Instrumentation</b> – analogue gauges (includes speedometer, tachometer, coolant temperature and fuel gauge) – Uplevel Driver Information Centre (includes compass, 2 trip odometers, instantaneous and average fuel economy readouts, fuel range, average vehicle speed, and digital speedometer) – tire pressure monitoring system (except spare)	S	S	S	S
<b>Lighting</b> – includes interior roof courtesy, dome with theatre dimming, dual front map reading and rear cargo area	S	S	S	S
<b>Locks</b> – power, front and rear – remote keyless entry system	S	S	S	S
<b>Mirror</b> – rear-view, manual day/night adjustment – rear-view, with auto-dimming feature	S	S	S	–
<b>Power outlets</b> – 3, auxiliary 12-volt	S	S	S	S
<b>Smoker's Package</b> – includes ashtray and lighter	0	0	0	0
<b>Steering column</b> – tilt adjustable – tilt adjustable and telescopic	S	–	–	–
<b>Steering wheel</b> – 3 spoke – 3 spoke, leather-wrapped with auxiliary sound system controls	S	S	–	–
<b>Storage</b> – behind radio faceplate (includes auxiliary audio input jack and USB port when equipped)	S	S	S	S
<b>Sunshades</b> – LH and RH padded; covered driver and front-passenger illuminated vanity mirrors	S	S	S	S
<b>Windows</b> – power, driver and front-passenger express-up/down, 2nd-row passenger express-down	S	S	S	S
<b>Cargo Management Package</b> – rear cargo security cover and convenience net	–	0	0	S

SEATS	LS	1LT	2LT	Ltz
Reclining front bucket seats with seatback storage pockets	S	S	S	S
Seat trim – cloth	S	–	–	–
Seat trim – premium cloth	–	S	S	S
Seat trim – leather seating surfaces	–	–	–	0
Heated driver and front-passenger seats	–	–	0	S
4-way manual driver seat adjuster	S	S	S	–
Power 6-way driver seat adjuster	–	–	0	S
4-way manual front-passenger seat adjuster	S	S	S	S
2nd-row 3-passenger 60/40 split-folding bench with centre armrest and dual cupholders	S	S	S	S
3rd-row 2-passenger 50/50 split-folding bench	S	S	S	S

ENTERTAINMENT				
All Orlando sound systems include an AM/FM stereo, CD player with MP3 playback capability and auxilliary audio input jack	S	S	S	S
Display – graphical	S	S	S	S
USB port	–	0 <sup>2</sup>	S	S
Bluetooth® – hands-free phone connectivity	–	0 <sup>2</sup>	S	S
SiriusXM Satellite Radio™†	S	S	S	S
6-speaker sound system	S	S	S	S
Navigation system†‡ HDD-based with 178 mm (7-in.) display	–	–	–	0
Vehicle Interface Package – Includes Bluetooth®, USB port and leather-wrapped steering wheel with auxiliary sound system controls	–	0	S	S

S – Standard.  
0 – Optional individually or in combination with other optional equipment.  
1 – Requires available automatic transmission.  
2 – Included with available Vehicle Interface Package.  
\* Visit onstar.ca for coverage map, details and systems limitations. Services vary by model and conditions.  
\*\* All-season tires may not satisfy winter tire requirements in all regions of the country. Tires specifically designed for severe winter conditions and marked with the "winter tire" symbol ❄️ may be required during certain months or in certain regions. Contact your Provincial, Municipal or local road authority for information regarding which tires are required in your particular area.  
† Available in 10 Canadian provinces and the 48 contiguous United States. Subscription sold separately after trial period. Visit xmradio.ca for details.  
‡ At time of print, detailed map coverage is available for most urban areas of the United States and for certain metropolitan areas of Canada (Vancouver, Calgary, Edmonton, Winnipeg, Windsor, London, Toronto, Ottawa, Montreal, Quebec City and Halifax). Coverage is significantly limited outside these areas.



EXTERIOR, mm (in.)	
Wheelbase (A)	2760 (108.7)
Length (B)	4665 (183.7)
Width (C)	1835 (72.2)
Height (D)	1635 (64.4)

INTERIOR, mm (in.) front/2nd-row/3rd-row	
Headroom	1020/983/945 (40.2/38.7/37.2 )
Legroom	1034/917/735 (40.7/36.1/29.9)
Shoulder room	1450/1419/1307 (57.1/55.9/51.5)
Hip room	1374/1349/972 (54.1/53.1/38.3)

CAPACITIES/WEIGHT	
Cargo volume L (cu. ft.) – rear seats in position – 3rd-row folded – 2nd- and 3rd-rows folded	101 (3.6) 739 (26.1) 1594 (56.3)
Fuel tank, L (imp. gal.)	64 (14.1)
Curb weight (est.), kg (lb.) – LS – LT – LTZ	1596 (3519) 1616 (3563) 1637 (3609)

WHEELS

A



B



C



A – 16" x 6.5" steel with painted wheel cover  
B – 16" x 6.5" aluminum  
C – 18" x 8" aluminum



WARRANTY

IT ISN'T FINE PRINT – IT'S A COMMITMENT.

Chevrolet builds its cars and trucks for the way you use them and drive them. But that's only step one. Every Chevrolet is also built to continue to live up to the highest standards, year after year. You can take added peace of mind in knowing that every Chevrolet is also backed by the best coverage in Canada:

- 3-year/60,000 km New Vehicle Limited Warranty\*
- 5-year/160,000 km Powertrain Component Limited Warranty, with \$0 deductible on repairs and the warranty is fully transferable at no charge\*
- 5-year/160,000 km Courtesy Transportation\*
- 5-year/160,000 km 24/7 Roadside Assistance\*
- 6-year/160,000 km rust-through perforation coverage\*
- 8-year/130,000 km coverage on catalytic converters and powertrain control modules (PCMs).\*

\*Whichever comes first. Conditions and limitations apply, see dealer for details.

OTHER OWNERSHIP PRIVILEGES AND PROGRAMS:\*\*

- **GM Protection Plan (GMPP)** – the only extended service plan backed by the resources and commitment of General Motors, GMPP may be purchased at the time of sale or subsequently during the New Vehicle Limited Warranty period
- **GM Goodwrench Service** – with GM-certified technicians and GM-approved parts, nobody knows your GM vehicle better
- **Chevrolet Owner Centre** – As an owner, take advantage of the Chevrolet Owner Centre. This online owner's destination gives you access to coupons, contests, current offers and the latest driving and maintenance tips. Find out more at [ChevroletOwner.ca](http://ChevroletOwner.ca)

\*\*Conditions and limitations apply.

TO HELP YOU PURCHASE OR LEASE A NEW VEHICLE:

- **Purchase Financing and Leasing** – on-the-spot financing, see your dealer for full details†
- **GM Student Bonus Program** – students or recent graduates of high school, college or university\*\* may be entitled to receive a Student Bonus vehicle redemption allowance of \$500 or \$750†† (tax inclusive) (purchased vehicle dependant) to use towards the purchase, lease or finance of one eligible new Chevrolet vehicle
- **The GM Card** – GM cardholders may redeem up to \$3500 GM Card® Earnings (subject to Vehicle Redemption Allowances) toward the Total Purchase Price on eligible new GM vehicles.†† For full program details please visit [thegmcard.ca](http://thegmcard.ca)

†Subject to eligibility. ††Program subject to change. \*\*Conditions and limitations apply.

INFORMATION RESOURCES:

You can find more information about these programs from your GM dealer, or at these information centres:

- The GM website at [gm.ca](http://gm.ca)
- The GM Customer Care Centre at **1-800-GM-DRIVE (1-800-463-7483 or 1-800-263-3830** for TDD users).

A WORD ABOUT THIS BROCHURE

Some of the equipment shown or described throughout this brochure may be available at extra cost. We have tried to make this brochure comprehensive and factual. We reserve the right, however, to make changes at any time, without notice, in prices, colours, materials, equipment, specifications, models and availability. Specifications, dimensions, measurements, ratings and other numbers in this brochure and other printed materials provided at the dealership or affixed to vehicles are approximates based upon design and engineering drawings and prototypes and laboratory tests. Your vehicle may differ due to variations in manufacture and equipment. Since some information may have been adapted since the time of the printing, please check with your GM dealer for complete details. General Motors of Canada Limited reserves the right to lengthen or shorten the model year for any product, for any reason, or to start and end model years at different times.

A WORD ABOUT ASSEMBLY

GM vehicles are equipped with engines and components produced and assembled by different operating units of General Motors, its subsidiaries and suppliers and these engines and components may change or be obtained from different sources from time to time. All such engines and components are approved for use in GM vehicles. Certain equipment ordered may be unavailable at the time of assembly and we suggest that you verify that your vehicle includes the equipment you ordered, or if there are changes, that they are acceptable to you.

TRADEMARKS

The marks appearing in this brochure including, but not limited to: General Motors, GM, Chevrolet, the Chevrolet emblem, Orlando, and their respective logos, emblems, slogans and vehicle model names and body designs; and other marks such as ECOTEC and StabiliTrak are trademarks of General Motors and/or General Motors of Canada Limited, its subsidiaries, affiliates or licensors.

OnStar and the OnStar emblem are registered trademarks and OnStar RemoteLink is a trademark of OnStar, LLC.

The SiriusXM name and related logos are trademarks of SiriusXM Canada, Canadian Satellite Radio Inc.

Bluetooth is a registered trademark of Bluetooth SIG Inc.

Apple, iPhone and iPod are trademarks of Apple Computer Inc. registered in the U.S. and other countries.

Facebook is a trademark of Facebook, Inc.

Twitter is a trademark of Twitter, Inc.

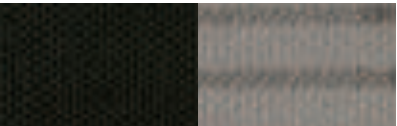
YouTube and Android mobile technology platform are trademarks of Google, Inc.

COPYRIGHT

©Copyright 2011 General Motors of Canada Limited. All Rights Reserved. All text, images, graphics, and other materials in this brochure are subject to the copyright and other intellectual property rights of General Motors and/or General Motors of Canada Limited. These materials may not be reproduced, distributed or modified without the express written permission of General Motors and/or General Motors of Canada Limited.

INTERIOR FABRICS

Cloth

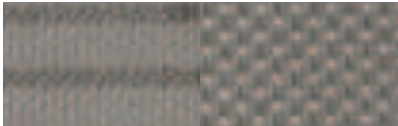


AFA Jet Black / Medium Titanium

Premium Cloth



AFB/AFE/AGO Jet Black



AFC/AFF/ANF Medium Titanium



AFD Jet Black/Bordeaux Red

Custom Leather



AFG/API Jet Black



AFH/APO Medium Titanium

EXTERIOR/INTERIOR COLOUR COMPATIBILITY

▼ Exterior	Interior Model ►	Jet Black/Medium Titanium LS	Jet Black 1LT, 2LT, LTZ	Jet Black/Bordeaux Red LTZ	Medium Titanium 1LT, 2LT, LTZ
GAN – Silver Ice Metallic		•	•	•	•
GAR – Black Granite Metallic*		•	•	•	•
GAZ – Summit White		•	•	•	•
GCS – Velvet Red Metallic		•	•	•	•
GCV – Pewter Grey Metallic		•	•	•	•
GOZ – Cashmere Metallic**			•		
GQK – Smokey Grey Metallic		•	•		•
GUF – Coastline Blue†		•	•		•

\* Available at extra cost.

\*\* Not available on LS.

† Interim availability.

EXTERIOR COLOURS



GAN – Silver Ice Metallic



GAR – Black Granite Metallic\*



GAZ – Summit White



GCS – Velvet Red Metallic



GCV – Pewter Grey Metallic



GOZ – Cashmere Metallic\*\*



GQK – Smokey Grey Metallic



GUF – Coastline Blue†

\* Available at extra cost.

\*\* Not available on LS.

† Interim availability.

Due to the limitations of the printing process, the colours shown may differ slightly from the actual colour. For more accurate colour samples, ask your sales consultant to see the dealer showroom colour display. Exterior colours may be subject to changes during the 2012 model year, please check with your sales consultant or visit [chevrolet.ca](http://chevrolet.ca) for latest colour availability on Orlando.



