

2011 CAMARO



**CENTURY**  
**AUTO.CA**

## 2011 CAMARO

THE EXHILARATION IS CONTAGIOUS.

It started with Chevrolet's designers and engineers who savoured the challenge to create a new definition of the sports car for the 21st century. After seeing the results of what GM's Vice-President of Global Design, Ed Welburn, describes as "an incredible experience," the next milestone was clear. He says: "We wanted that same exhilaration to translate to the driver..." The enthusiasm spread almost as quickly as the blistering 4.7 second 0-60 mph (96 km/h) time for the Camaro SS in GM testing. A Consumers Digest Best Buy for 2010 followed, on top of wildly enthusiastic reviews from the typically hard-to-impress automotive media, with quotes like this from Motor Trend: "Buckle up, because the new Camaro runs like a cheetah escaping the zoo." But for you to fully grasp Camaro's unique blend of performance, refinement and efficiency, you have to drive it. The winner of the *Motorweek* 2010 Driver's Choice Award for Best Sport Coupe – it's built right here in Canada. Chevrolet Camaro. Catch it if you can.

[chevrolet.ca](http://chevrolet.ca)



**CENTURY**  
**AUTO.CA**





## DESIGN

DOESN'T JUST MAKE YOU LOOK.  
MAKES YOU STARE.

*caranddriver.com*\* summed up what it's like to drive around in a Camaro: "People turn and stare and elbow their friends without taking their eyes off you ..." It had the same affect on the judges who named Camaro the 2010 World Car Design of the Year. All that attention is purely intentional. Chevrolet's designers set out to create a sports car that makes its presence felt. In fact, when Camaro's Exterior Design Director, Tom Peters, saw the final product, he commented: "It's got the magic. It's got the look ... it's got the soul." What is it that defines the iconic look of the new Camaro? It's the aggressive stance and the long hood, combined with a short rear deck and assertive rear shoulders. As hot as it looks, wait till you feel how it drives.

\* *caranddriver.com*, September 2009.

**TOP LEFT:** HIGH-INTENSITY DISCHARGE HEADLIGHTS WITH LED HALO RINGS ARE INCLUDED WITH THE AVAILABLE RS PACKAGE.

**CENTRE LEFT:** THE HIGHLY RECOGNIZABLE CHEVROLET BOWTIE FORMS THE CENTREPIECE OF CAMARO'S V-SHAPED FRONT GRILLE.

**BOTTOM LEFT:** THE AVAILABLE RS PACKAGE ADDS A SERIES OF DRAMATIC STYLING TOUCHES LIKE THE UNIQUE TAIL LIGHTS AND RS BADGING.

**CENTURY  
AUTO.CA**

CAMARO 2LT, SHOWN IN SILVER ICE METALLIC WITH AVAILABLE RS PACKAGE.





A 2010 Interior of the Year – Sports Car Category  
– WardsAuto.com

## COCKPIT

OMG

Until you've sat in Camaro's firm seat structure and scanned the twin analogue gauge cluster. Until you've turned on the ignition and tuned into your favourite genre of music from one of up to 130 channels of the standard XM Satellite Radio™.\* you can't fully anticipate what your reaction will be to this new sports car driving experience. What's the briefest and most direct description? How about OMG – or for more polite company: Oh My Gosh.

\* Available in 10 Canadian provinces and the 48 contiguous United States. Subscription sold separately after trial period. Visit [xmradio.ca](http://xmradio.ca) for details.

**TOP RIGHT:** NEW FOR 2011, HEAD-UP DISPLAY (HUD) IS STANDARD ON 2LT AND 2SS MODELS. IT ENABLES YOU TO SEE DATA SUCH AS VEHICLE SPEED, NAVIGATION SYSTEM DIRECTIONS AND VEHICLE DIAGNOSTICS PROJECTED ONTO THE WINDSHIELD.

**CENTRE RIGHT:** IT'S YOUR SOUNDTRACK – A USB PORT IN THE CONSOLE ENABLES YOU TO PLAY SELECTIONS FROM YOUR IPOD® OR OTHER MP3 PLAYER. ALSO INCLUDED IS A WIRELESS PREFERRED DEVICE INTERFACE MODULE (PDIM) THAT ENABLES YOU TO CONNECT AND CONTROL MANY USB-COMPATIBLE DEVICES USING CAMARO'S SOUND SYSTEM CONTROLS. THE USB PORT AND PDIM ARE STANDARD ON 2LT AND 2SS MODELS AND AVAILABLE ON 1LT.

**BOTTOM RIGHT:** THE TIRE PRESSURE MONITORING SYSTEM DISPLAYS CONTINUOUSLY UPDATED TIRE INFLATION PRESSURES ON THE COMPREHENSIVE DRIVER INFORMATION CENTRE.





# CAMARO LS/LT

A MORE EVOLVED SPORTS CAR.

Camaro uses the very latest advanced technologies to produce the vast quantities of power you may associate with the golden age of sports cars. In fact, for 2011, Camaro has upped the ante, now generating 312 horsepower from its standard 3.6L V6 engine – that’s more than the 2011 Ford Mustang V6 models.\* But in Camaro, technology is also used to deliver remarkable fuel efficiency – Direct Injection and Variable Valve Timing (VVT) contribute to a highway fuel consumption rating of just 6.9 L/100 km,\*\* making it the envy of many mid-size sedans. So just how good is this sports car? This is what *motortrend.com* wrote in its review: “In an era when ‘mega-ultra-hyped blockbuster’ often means ‘I wasted my money on that?’ the new Chevy Camaro pushes back against unfulfilled expectations. It delivers. The look is there. The performance is there. The value is there. And, oh yes, so is the ‘wow.’” And who can resist more ‘wow’ in their life on the road?

\* Based on latest 2011 Model Year competitive information available at time of printing.

\*\* 2011 Chevrolet Camaro equipped with standard 3.6L V6 engine and available 6-speed automatic transmission. 2011 Chevrolet Camaro fuel consumption ratings based on GM testing in accordance with approved Transport Canada test methods. Your actual consumption may vary.

**TOP RIGHT:** THE INFERNO ORANGE TRIM PACKAGE FEATURES FRONT LEATHER-APPOINTED SEATS AND DISTINCTIVE ACCENT STITCHING DETAILS THROUGHOUT THE INTERIOR. AVAILABLE ON 2LT AND 2SS MODELS.

**CENTRE RIGHT:** THE FOUR-PACK GAUGE SET OFFERS AN UP-TO-THE-MINUTE SPIN ON RETRO STYLING. IT IS INCLUDED IN CAMARO 2LT AND 2SS MODELS.

**BOTTOM RIGHT:** DYNAMIC SOUND – AN AVAILABLE 9-SPEAKER BOSTON ACOUSTICS® PREMIUM AUDIO SYSTEM WITH A 245-WATT AMPLIFIER IS STANDARD ON 2LT AND 2SS MODELS AND AVAILABLE ON 1LT AND 1SS.



CENTURY  
AUTO.CA







## CAMARO SS

HIGH OUTPUT. MAKE THAT REALLY HIGH OUTPUT.

If your joy factor is measured in horsepower, Camaro SS is built with you in mind. Its High Output 6.2L V8 engine generates a grin-inducing 426 horsepower\* – that's more than 2011 Ford Mustang GT.\*\* But as with all things Camaro, it's not just brute power that is on display with the SS. The control technology is equally advanced, with massive four-piston Brembo® performance brakes and precision handling that is the product of a multi-link independent rear suspension design with progressive-rate coil springs over shocks. So while your hands firmly grip the leather-wrapped steering wheel, Camaro SS stays firmly glued to the road.

\* Equipped with the standard 6-speed manual transmission.

\*\* Based on latest 2011 Model Year competitive information available at time of printing.

**TOP LEFT:** THE AVAILABLE 20-IN. POLISHED ALUMINUM WHEELS ARE MATCHED WITH PIRELLI P ZERO™ ULTRA-HIGH-PERFORMANCE TIRES.

**CENTRE LEFT:** THE AVAILABLE TAPSHIFT™ AUTOMATIC TRANSMISSION IS MATED WITH A 400-HP VERSION OF THE 6.2L V8 THAT FEATURES ACTIVE FUEL MANAGEMENT® WHICH SHUTS DOWN HALF THE ENGINE'S CYLINDERS WHEN POWER DEMANDS ARE LOW.

**BOTTOM LEFT:** BREMBO PERFORMANCE BRAKES WITH 4-PISTON CALIPERS AT ALL FOUR CORNERS ARE STANDARD ON CAMARO SS MODELS.



**CENTURY  
AUTO.CA**

CAMARO SS, SHOWN IN CYBER GRAY METALLIC WITH AVAILABLE RS PACKAGE.

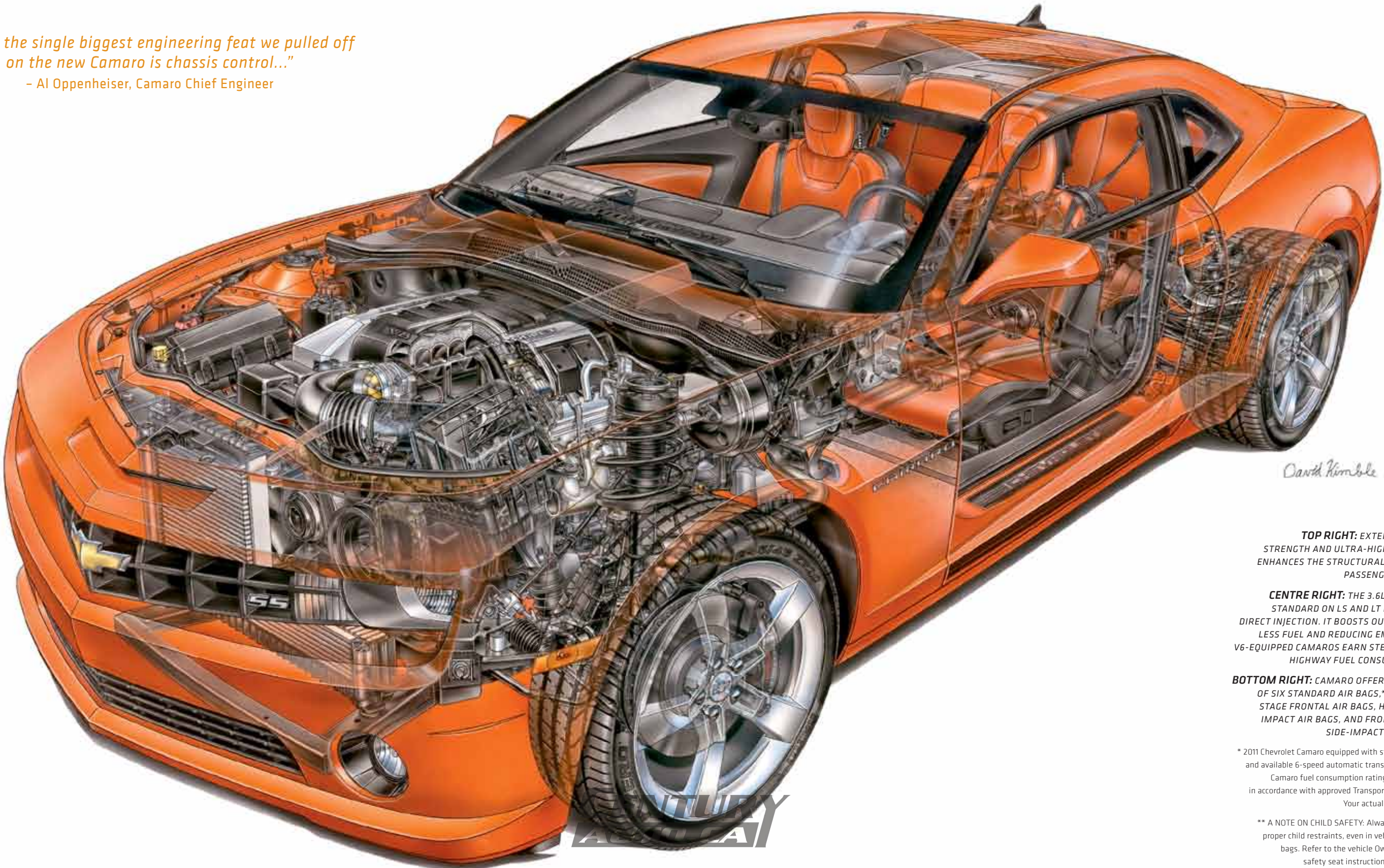


TECHNOLOGY

IT'S ALSO POWERED BY MICROCOMPUTERS.

Camaro's definition of the sports car isn't just about power – it embodies an all-encompassing approach to performance. Power is complemented by efficiency and authoritative control. The set-up was refined by testing on one of the toughest tracks in the world: the Nordschleife course at the Nürburgring. The stable handling dynamics are the product of StabiliTrak®, working in tandem with traction control and ABS, with input provided by microcomputers, accelerometers and stability sensors. The StabiliTrak system on LS and LT models features three modes, while SS models add a fourth competitive mode for sanctioned racing events – putting all that Nürburgring experience to very good use.

*"I think the single biggest engineering feat we pulled off on the new Camaro is chassis control..."*  
– Al Oppenheiser, Camaro Chief Engineer



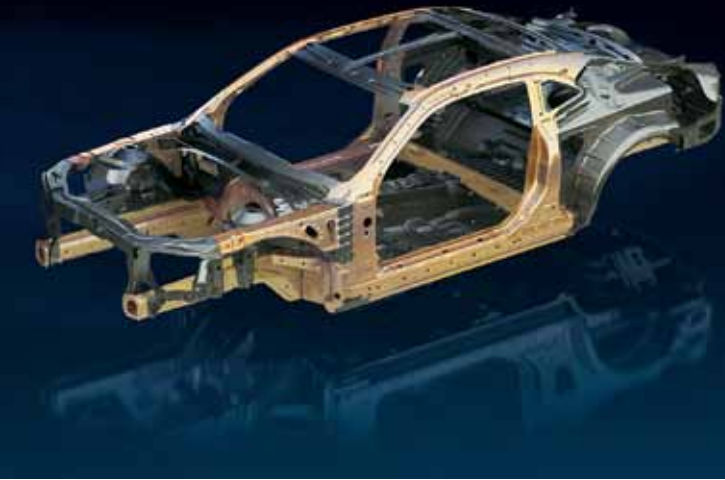
**TOP RIGHT:** EXTENSIVE USE OF HIGH-STRENGTH AND ULTRA-HIGH-STRENGTH STEEL ENHANCES THE STRUCTURAL INTEGRITY OF THE PASSENGER COMPARTMENT.

**CENTRE RIGHT:** THE 3.6L V6 ENGINE THAT'S STANDARD ON LS AND LT MODELS FEATURES DIRECT INJECTION. IT BOOSTS OUTPUT WHILE USING LESS FUEL AND REDUCING EMISSIONS, HELPING V6-EQUIPPED CAMAROS EARN STELLAR 6.9 L/100 KM HIGHWAY FUEL CONSUMPTION RATINGS.\*

**BOTTOM RIGHT:** CAMARO OFFERS THE PROTECTION OF SIX STANDARD AIR BAGS,\*\* INCLUDING DUAL-STAGE FRONTAL AIR BAGS, HEAD CURTAIN SIDE-IMPACT AIR BAGS, AND FRONT SEAT-MOUNTED SIDE-IMPACT THORAX AIR BAGS.

\* 2011 Chevrolet Camaro equipped with standard 3.6L V6 engine and available 6-speed automatic transmission. 2011 Chevrolet Camaro fuel consumption ratings based on GM testing in accordance with approved Transport Canada test methods. Your actual consumption may vary.

\*\* A NOTE ON CHILD SAFETY: Always use safety belts and proper child restraints, even in vehicles equipped with air bags. Refer to the vehicle Owner's Manual and child safety seat instructions for more information.





CAMARO MODEL OVERVIEW

CAMARO LS

Camaro LS includes these features:

- 312 hp 3.6L V6 engine with Direct Injection and Variable Valve Timing (VVT)
- GM Oil Life Monitoring System
- 6-speed manual transmission standard; 6-speed automatic transmission with TAPshift manual shift control available
- 4-wheel disc brakes with ABS
- StabiliTrak electronic stability control system
- Traction control
- Limited slip differential
- 4-wheel independent sport suspension
- 18-in. heritage steel wheels
- Tire pressure monitoring system
- Dual exhaust system with polished stainless steel exhaust tips
- Power exterior mirrors
- Remote keyless entry system
- Six air bags
- Driver Information Centre with compass
- Air conditioning
- Power windows and door locks
- Tilt and telescoping steering column
- Cruise control
- Power driver and front-passenger seat recliners
- Enhanced 6-speaker sound system with CD player, MP3 playback and auxiliary audio input jack
- XM Satellite Radio\*
- OnStar\*\*\* with 6 months of the Directions & Connections Plan, including Turn-by-Turn Navigation.

\*Available in 10 Canadian provinces and the 48 contiguous United States. Subscription sold separately after trial period. Visit xmradio.ca for details.

\*\*Visit onstar.ca for coverage map, details and system limitations. Services vary by model and conditions. OnStar acts as a link to existing emergency service providers

CAMARO 1LT

Camaro 1LT enhances LS features with:

- 18-in. painted aluminum wheels
- Fog lights
- Power 6-way driver's seat adjuster.

CAMARO 2LT

Camaro 2LT enhances 1LT features with:

- 19-in. painted aluminum wheels
- Heated, power exterior mirrors with auto-dimming driver's mirror
- Ultrasonic rear parking assist
- Head-Up Display (HUD)
- Leather-wrapped steering wheel with sound system controls
- Auto-dimming interior rear-view mirror
- Heated, leather-appointed front sport bucket seats
- Centre console-mounted auxiliary gauges
- 9-speaker Boston Acoustics premium audio system with a 245-watt amplifier
- USB port
- Wireless Preferred Device Interface Module (PDIM)
- Bluetooth® connectivity.

CAMARO 1SS

Camaro 1SS includes these distinctive features:

- 426 hp High Output 6.2L V8 engine standard; 400 hp High Output 6.2L V8 engine with Active Fuel Management available
- Engine oil cooler
- 6-speed manual transmission standard; 6-speed automatic transmission with TAPshift manual shift control available
- Brembo performance brakes
- Performance suspension
- 20-in. painted aluminum wheels with Sterling Silver-finish
- Unique SS lower body extension, front air scoop, lower grille and rear diffuser
- Rear spoiler
- Leather-wrapped steering wheel and shifter
- SS embroidery on front-seat headrests.

CAMARO 2SS

Camaro 2SS enhances 1SS features with:

- Heated, power exterior mirrors with auto-dimming driver's mirror
- Ultrasonic rear parking assist
- Head-Up Display (HUD)
- Leather-wrapped steering wheel with sound system controls
- Auto-dimming interior rear-view mirror
- Heated, leather-appointed front sport bucket seats
- Centre console-mounted auxiliary gauges
- 9-speaker Boston Acoustics premium audio system with a 245-watt amplifier
- USB port
- Wireless Preferred Device Interface Module (PDIM)
- Bluetooth connectivity.



ACCESSORIES



BODY-COLOURED ENGINE COVER



SATIN-NICKEL FUEL DOOR



CUSTOM CAMARO CAR COVER



GROUND EFFECTS PACKAGE



21-IN. MACHINED-ALUMINUM WHEEL WITH BLACK ACCENTS



21-IN. BLACK PAINTED WHEEL

PUT EVEN MORE OF YOURSELF INTO CAMARO.

It's your vehicle – so why not personalize it to reflect who you are and what you want from your Camaro by adding Chevrolet Accessories? They are the only accessories that were created as part of Camaro's development process. That ensures they offer the same quality of fit, finish and function as the rest of your vehicle. They are backed by the 3-year/60,000 km New Vehicle Limited Warranty\* and can be included in your finance agreement. Ask your dealer for a complete list of the Chevrolet Accessories available for Camaro, or visit **gm.ca**

\* Whichever comes first, when permanently installed by the dealer at the time you purchased your new vehicle, or for the remainder of the New Vehicle Limited Warranty if installed after the time of your vehicle purchase, but no less than 12 months.

ONSTAR



Every Camaro is equipped with its own help button – OnStar\* with six months of the Directions & Connections Plan is standard. With OnStar, help comes in many forms. Want to know the best route to your next destination? OnStar includes Turn-by-Turn Navigation – the simplest and smartest navigation system available. Simply push the OnStar button and tell an Advisor where you are going. Instructions are then downloaded to your vehicle, giving you turn-by-turn directions to your destination. OnStar also represents a significant advance in safety technology. Sensors on board your vehicle automatically send an alert if you are in a collision, directing emergency services providers to your exact location. And if your vehicle is stolen, OnStar's GPS technology helps police find it. Help is always there for you with OnStar. Find out even more uses at onstar.ca

\* Visit onstar.ca for coverage map, details and system limitations. Services vary by model and conditions. OnStar acts as a link to existing emergency service providers.

XM SATELLITE RADIO



What's a drive without your favourite tunes? Chevrolet believes music and other programming are integral to your driving experience. That's why XM Satellite Radio\*\* is standard on every Camaro. It lets you tune in to the largest playlist on the planet and the most commercial-free music in digital-quality sound, with coverage from coast to coast. It gives you up to 130 channels to choose from – everything from a vast range of musical genres, to news, talk, comedy and sports channels – including more than 1000 NHL games. Already enjoyed by more than 9 million subscribers – are you next? Ask your dealer for more information.

\*\* Available in 10 Canadian provinces and the 48 contiguous United States. Subscription sold separately after trial period. Visit xmradio.ca for details.



2011 CAMARO STANDARD AND OPTIONAL FEATURES

SAFETY AND SECURITY	LS	1LT	2LT	1SS	2SS
Air bags – dual-stage, driver and front-passenger, frontal with Passenger Sensing System	S	S	S	S	S
Air bags – front-to-rear, side-impact head curtain	S	S	S	S	S
Air bags – driver and front-passenger, thorax, seat-mounted side-impact	S	S	S	S	S
Brake/transmission shift interlock (automatic transmission only)	S	S	S	S	S
Door locks – power, programmable with lock-out protection	S	S	S	S	S
Headlights – Daytime Running Lights with automatic light control	S	S	S	S	S
Keyless entry system – remote with Panic feature	S	S	S	S	S
OnStar® In-Vehicle Communications and Assistance Service – includes 6 months of the Directions & Connections Plan with Turn-by-Turn Navigation	S	S	S	S	S
Safety restraints – LATCH (Lower Anchors and top Tethers for Children), rear seats	S	S	S	S	S
StabiliTrak – electronic stability control system	S	S	S	S	S
Theft-deterrent system – electronic immobilizer	S	S	S	S	S
Traction control – electronic, full-function, all-speed	S	S	S	S	S
Ultrasonic rear parking assist – rear obstacle detection with audible/visible warning	–	O <sup>1</sup>	S	–	S

MECHANICAL					
Battery – with run-down protection	S	S	S	S	S
Brakes – power, 4-wheel disc	S	S	S	S	S
Brakes – Brembo, performance 4-piston front and rear calipers	–	–	–	S	S
Brakes – 4-wheel anti-lock braking system (ABS) with electronic brake assist	S	S	S	S	S
Differential – limited slip rear	S	S	S	S	S
Drive – rear-wheel	S	S	S	S	S
Engine – 3.6L DOHC V6 VVT with Direct Injection Horsepower – 312 @ 6500 rpm; Torque – 278 lb.-ft. @ 5100 rpm	S	S	S	–	–
Engine – 6.2L LS3 V8 with SFI and standard manual transmission Horsepower – 426 @ 5900 rpm; Torque – 420 lb.-ft. @ 4600 rpm	–	–	–	S	S
Engine – 6.2L L99 V8 with SFI, Active Fuel Management and available automatic transmission Horsepower – 400 @ 5900 rpm; Torque – 410 lb.-ft. @ 4300 rpm	–	–	–	O	O <sup>2</sup>
Engine – block heater	O	O	O	–	–
Engine – oil cooler	–	–	–	S	S
Exhaust system – aluminized stainless steel	S	S	S	S	S
Exhaust system – dual with polished tips	S	S	S	S	S
Steering – power, variable-ratio rack-and-pinion	S	S	S	S	S
Suspension – 4-wheel independent, Sport	S	S	S	–	–
Suspension – 4-wheel independent, Performance	–	–	–	S	S
Transmission – 6-speed manual	S	S	S	S	S
Transmission – 6-speed manual with Hurst short throw shifter	–	–	–	O	O
Transmission – 6-speed automatic with TAPshift manual shift control	O <sup>3</sup>	O <sup>3,4</sup>	O <sup>2,3</sup>	O <sup>5</sup>	O <sup>2,5</sup>
Vehicle starter system – remote	–	O <sup>6</sup>	O <sup>7</sup>	–	O <sup>5</sup>

EXTERIOR					
Fascia – front and rear body colour with front grille and rear diffuser	S	S	S	–	–
Fascia – unique SS front and rear body colour with lower extension, front air scoop, unique lower grille and rear diffuser	–	–	–	S	S
Fog lights – projector beam <sup>8</sup>	–	S	S	S	S
Glass – Solar Ray, tinted	S	S	S	S	S
Headlights – halogen	S	S	S	S	S
Headlights – High-Intensity Discharge (HID) <sup>9</sup>	–	O	O	O	O
Mirrors – power remote control	S	S	–	S	–
Mirrors – heated, power remote control with driver-side auto-dimming feature	–	–	S	–	S
Mouldings – lower rocker, body-colour	S	S	S	S	S

EXTERIOR (CONTINUED)	LS	1LT	2LT	1SS	2SS
Spoiler – rear, deck-lid	–	O <sup>9</sup>	O <sup>9</sup>	S	S
Sunroof – power, tilt and sliding glass with express-open feature	–	O	O	O	O
Tires – P245/55R18 all-season touring**	S	S	–	–	–
Tires – P245/50R19 all-season touring**	–	–	S	–	–
Tires – P245/45R20 front and P275/40R20 rear summer performance <sup>†</sup>	–	O <sup>9</sup>	O <sup>9</sup>	S	S
Tire – inflator kit	S	S	S	S	S
Tire – compact spare	O	O	O	–	–
Wheels – 18" x 7.5" heritage steel (A)	S	–	–	–	–
Wheels – 18" x 7.5" painted aluminum (B)	–	S	–	–	–
Wheels – 19" x 8" painted aluminum (C)	–	–	S	–	–
Wheels – 19" x 8" polished aluminum	–	O <sup>10,11</sup>	O <sup>10</sup>	–	–
Wheels – 20" x 8" front and 20" x 9" rear painted aluminum with Sterling Silver-finish	–	–	–	S	S
Wheels – 20" x 8" front and 20" x 9" rear painted aluminum with Midnight Silver-finish, flangeless (D) <sup>9</sup>	–	O	O	O	O
Wheels – 20" x 8" front and 20" x 9" rear polished aluminum (E)	–	O <sup>12</sup>	O <sup>12</sup>	O	O
Windshield wipers – 2-speed with variable delay (intermittent)	S	S	S	S	S
LT RS Package – includes body-coloured roof ditch moulding, rear deck-lid spoiler, 20" x 8" front and 20" x 9" rear Midnight Silver-finish painted flangeless aluminum wheels (D) with P245/45R20 front and P275/40R20 rear summer performance tires, <sup>†</sup> High-Intensity Discharge (HID) headlights, unique tail lights and RS badging <sup>8</sup>	–	O	O	–	–
SS RS Package – includes body-coloured roof ditch moulding, 20" x 8" front and 20" x 9" rear Midnight Silver-finish painted flangeless aluminum wheels (D), High-Intensity Discharge (HID) headlights, unique tail lights and Red SS badging <sup>8</sup>	–	–	–	O	O

INTERIOR					
Air conditioning – manual	S	S	S	S	S
Air filtration system – pollen filter	S	S	S	S	S
Console – front floor with dual cupholders and auxiliary power outlets	S	S	S	S	S
Cruise control – steering wheel-mounted, electronic with resume, coast and decelerate/accelerate features	S	S	S	S	S
Defogger – electric rear-window	S	S	S	S	S
Floor mats – front, carpeted	S	S	S	S	S
Instrumentation – analogue cluster (includes speedometer, tachometer, coolant temperature and fuel gauge)	S	S	S	S	S
Instrumentation – Driver Information Centre (DIC) (includes 8-point compass and tire pressure monitoring system)	S	S	S	S	S
Instrumentation – GM Oil Life Monitoring System	S	S	S	S	S
Instrumentation – Head-Up Display (HUD) (includes read-outs for vehicle speed, tachometer, selected gear, high beam indicator, turn signals, compass, exterior air temperature, vehicle messages, audio system information and Turn-by-Turn Navigation)	–	–	S	–	S
Instrumentation – centre console-mounted voltmeter, oil pressure, oil temperature and transmission fluid temperature gauges	–	–	S	–	S
Lights – courtesy with delayed entry/exit, dome, front reading and theatre dimming	S	S	S	S	S
Lights – ambient LED lighting system on door panels	–	–	S	–	S
Mirror – rear-view, with OnStar controls	S	S	–	S	–
Mirror – rear-view, with OnStar controls and auto-dimming feature	–	–	S	–	S
Power outlets – auxiliary, centre console storage area and at front of centre console	S	S	S	S	S
Retained accessory power	S	S	S	S	S
Steering column – tilt and telescopic adjustable	S	S	S	S	S
Steering wheel – 3-spoke	S	S	–	–	–
Steering wheel – 3-spoke, leather-wrapped (includes leather-wrapped shifter)	–	–	–	S	–
Steering wheel – 3-spoke, leather-wrapped with sound system controls (includes leather-wrapped shifter)	–	O <sup>1</sup>	S	–	S

INTERIOR (CONTINUED)	LS	1LT	2LT	1SS	2SS
Trunk – release, power remote	S	S	S	S	S
Universal home remote – programmable 3-channel transmitter	–	–	S	–	S
Windows – power, driver and passenger express-up and down	S	S	S	S	S
Convenience and Connectivity Package – includes ultrasonic rear parking assist, leather-wrapped steering wheel with sound system controls, leather-wrapped shifter, Bluetooth mobile phone connectivity and wireless PDIM and USB port <sup>13</sup>	–	O	–	–	–
Inferno Orange Trim Package – includes Black interior with Inferno Orange leather-appointed seats with accent stitching on steering wheel, shifter, door armrests, centre console and seats, Inferno Orange door trim and instrument panel appliqué <sup>14</sup>	–	–	O	–	O
Synergy Green Trim Package – includes Synergy Green interior trim accents for instrument panel and door panels <sup>††15</sup>	–	–	O	–	O

SEATS					
Cloth reclining front bucket seats with adjustable head restraints	S	–	–	–	–
Sport cloth reclining front bucket seats with adjustable head restraints	–	S	–	S	–
Front bucket seats with heated leather-appointed seating surfaces and adjustable head restraints	–	–	S	–	S
Power driver and front-passenger recliners	S	S	S	S	S
Power 6-way driver seat adjuster	–	S	S	S	S
Front-passenger seatback map pocket	–	S	S	S	S
"SS" embroidery on front headrests	–	–	–	S	S
Seatbacks – rear, folding with trunk pass-through	S	S	S	S	S

ENTERTAINMENT SYSTEMS					
All Camaro sound systems include an electronically tuned AM/FM stereo with MP3 playback, music navigator, auxiliary audio input jack, Graphic Information Display (GID) and exterior temperature display	S	S	S	S	S
6-speaker enhanced sound system	S	S	–	S	–
9-speaker Boston Acoustics premium sound system with 245-watt amplifier	–	O	S	O	S
XM Satellite Radio <sup>‡</sup>	S	S	S	S	S
Bluetooth – utilizes vehicle sound system, microphone, voice recognition and controls with Bluetooth-enabled mobile phones and wireless PDIM and USB port	O <sup>16</sup>	O <sup>1</sup>	S	–	S

S – Standard. O – Optional individually or in combination with other optional equipment.

1 – Included with available Convenience and Connectivity Package.

2 – Includes remote vehicle starter system.

3 – Deletes limited slip differential.

4 – Includes remote vehicle starter system when ordered with available Convenience and Connectivity Package.

5 – Included with available 6.2L L99 V8 engine.

6 – Included with available Convenience and Connectivity Package, when available automatic transmission is specified.

7 – Included with available automatic transmission.

8 – Fog lights act as daytime running lights when available RS Package is ordered.

9 – Included with available RS Package.

10 – Not available with RS Package.

11 – Includes P245/50R19 all-season\*\* touring tires.

12 – Requires available RS Package.

13 – Includes remote vehicle starter system when available automatic transmission is specified.

14 – Requires Inferno Orange interior trim.

15 – Requires Synergy Green exterior colour and Black or Gray interior trim.

16 – Includes steering wheel-mounted sound system controls.

\* Visit onstar.ca for coverage map, details and system limitations. Services vary by model and conditions.

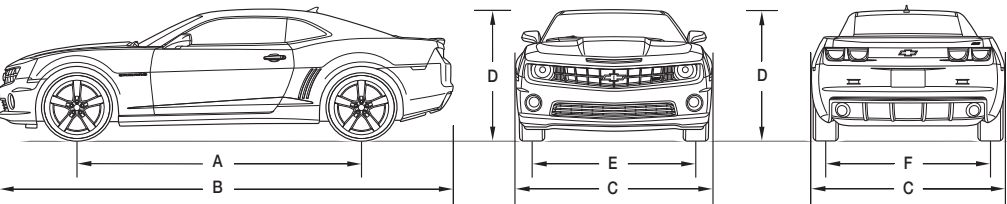
\*\* All-season tires may not satisfy winter tire requirements in all regions of the country. Tires specifically designed for severe winter conditions and marked with the "winter tire" symbol ❄️ may be required during certain months or in certain regions. Contact your Provincial, Municipal or local road authority for information regarding which tires are required in your particular area.

† Installation of 4 snow tires recommended for winter driving conditions.

†† Interim availability.

‡ Available in 10 Canadian provinces and 48 contiguous United States. Monthly subscription sold separately after trial period. Visit xmradio.ca for details.

DIMENSIONS



EXTERIOR, mm (in.)	
Wheelbase (A)	2852 (112.3)
Length (B)	4836 (190.4)
Width (C)	1918 (75.5)
Height (D)	1377 (54.2)
Front tread (E)	1618 (63.7)
Rear tread (F) – Camaro LS, LT – Camaro SS	1628 (64.1) 1618 (63.7)

INTERIOR, mm (in.) front/rear	
Headroom	950/897 (37.4/35.3)
Legroom	1077/759 (42.4/29.9)
Shoulder room	1444/1080 (56.9/42.5)
Hip room	1436/1255 (56.5/49.4)

CAPACITIES/WEIGHT	
Trunk, L (cu. ft.)	320 (11.3)
Fuel tank, L (imp. gal.)	72 (15.8)
Curb weight (est.), kg (lb.) – LS with manual transmission – LS with automatic transmission – 1LT/2LT with manual transmission – 1LT/2LT with automatic transmission – 1SS/2SS with manual transmission – 1SS/2SS with automatic transmission	1715 (3780) 1710 (3769) 1697 (3741) 1701 (3750) 1751 (3860) 1775 (3913)

TOWING
3.6L V6 VVT; 3.27 final drive ratio; 454 kg (1000 lb.) maximum gross trailer weight <sup>††</sup>
6.2L LS3 V8; 3.45 final drive ratio; 454 kg (1000 lb.) maximum gross trailer weight <sup>††</sup>
6.2L L99 V8; 3.27 final drive ratio; 454 kg (1000 lb.) maximum gross trailer weight <sup>††</sup>

†† When properly equipped. Includes weight of trailer, cargo, passengers and equipment. All towing recommendations are subject to change. Trailer tongue load should be 10% of the maximum trailer weight but should not exceed the load rating specified for that vehicle, engine or hitch combination. See your dealer or refer to the Camaro Owner's Manual for details.





IT ISN'T FINE PRINT – IT'S A COMMITMENT.

Chevrolet builds its cars and trucks for the way you use them and drive them. But that's only step one. Every Chevrolet is also built to continue to live up to the highest standards, year after year. You can take added peace of mind in knowing that every Chevrolet is also backed by the best coverage in Canada:

- 3-year/60,000 km New Vehicle Limited Warranty\*
- 5-year/160,000 km Powertrain Component Limited Warranty, with \$0 deductible on repairs and the warranty is fully transferable at no charge\*
- 5-year/160,000 km Courtesy Transportation\*
- 5-year/160,000 km 24/7 Roadside Assistance\*
- 6-year/160,000 km rust-through perforation coverage\*
- 8-year/130,000 km coverage on catalytic converters and powertrain control modules (PCMs)\*.

\*Whichever comes first. Conditions and limitations apply, see dealer for details.

**OTHER OWNERSHIP PRIVILEGES AND PROGRAMS:†**

- **GM Protection Plan (GMPP)** – the only extended service plan backed by the resources and commitment of General Motors, GMPP may be purchased at the time of sale or subsequently during the New Vehicle Limited Warranty period
- **GM Goodwrench Service** – with GM-certified technicians and GM-approved parts, nobody knows your GM vehicle better.

\*\*Conditions and limitations apply.

**TO HELP YOU PURCHASE A NEW VEHICLE:**

- **Purchase Financing** – on-the-spot financing at your GM dealership†
- **GM Student Bonus Program** – students or recent graduates of high school, college or university\*\* may be entitled to receive a Student Bonus vehicle redemption allowance of \$500 or \$750†† (tax inclusive) (purchased vehicle dependant) to use towards the purchase, lease or finance of one eligible new Chevrolet vehicle.
- **The GM Card** – GM cardholders may redeem up to \$3500 GM Card® Earnings (subject to Vehicle Redemption Allowances) toward the Total Purchase Price on eligible new GM vehicles††. For full program details please visit [thegmcard.ca](http://thegmcard.ca)

\*\*Conditions and limitations apply.†Subject to eligibility. ††Program subject to change.

**INFORMATION RESOURCES:**

You can find more information about these programs from your GM dealer, or at these information centres:

- The GM website at [gm.ca](http://gm.ca)
- The GM Customer Communication Marketing Centre at **1-800-GM-DRIVE (1-800-463-7483 or 1-800-263-3830** for TDD users).

**A WORD ABOUT THIS BROCHURE**

Some of the equipment shown or described throughout this brochure may be available at extra cost. We have tried to make this brochure comprehensive and factual. We reserve the right, however, to make changes at any time, without notice, in prices, colours, materials, equipment, specifications, models and availability. Specifications, dimensions, measurements, ratings and other numbers in this brochure and other printed materials provided at the dealership or affixed to vehicles are approximates based upon design and engineering drawings and prototypes and laboratory tests. Your vehicle may differ due to variations in manufacture and equipment. Since some information may have been adapted since the time of the printing, please check with your GM dealer for complete details. General Motors of Canada Limited reserves the right to lengthen or shorten the model year for any product, for any reason, or to start and end model years at different times.

**A WORD ABOUT ASSEMBLY**

GM vehicles are equipped with engines and components produced and assembled by different operating units of General Motors, its subsidiaries and suppliers and these engines and components may change or be obtained from different sources from time to time. All such engines and components are approved for use in GM vehicles. Certain equipment ordered may be unavailable at the time of assembly and we suggest that you verify that your vehicle includes the equipment you ordered, or if there are changes, that they are acceptable to you.

**TRADEMARKS**

The marks appearing in this brochure including, but not limited to: General Motors, GM, the GM emblem, the Chevrolet Accessories logo, Chevrolet, the Chevrolet emblem, Camaro and their respective logos, emblems, slogans and vehicle model names and body designs; and other marks such as Active Fuel Management, StabiliTrak and TAPShift are trademarks of General Motors Corporation and/or General Motors of Canada Limited, its subsidiaries, affiliates or licensors. OnStar and the OnStar emblem are registered trademarks of the OnStar Corporation. Brembo is a registered trademark of Brembo S.p.A. Boston Acoustics is a registered trademark of the Boston Acoustic Corp. The XM name and related logos are trademarks of XM Canada, Canadian Satellite Radio Inc. Apple and iPod are trademarks of Apple Computer Inc. registered in the U.S. and other countries. Bluetooth is a registered trademark of Bluetooth SIG Inc. P Zero is a trademark of Pirelli & C. S.p.A.

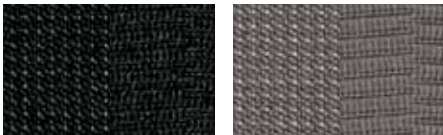
**COPYRIGHT**

©Copyright 2010 General Motors of Canada Limited. All Rights Reserved. All text, images, graphics, and other materials in this brochure are subject to the copyright and other intellectual property rights of General Motors Corporation and/or General Motors of Canada Limited. These materials may not be reproduced, distributed or modified without the express written permission of General Motors Corporation and/or General Motors of Canada Limited.

Printed in Canada, July 2010.

INTERIOR FABRICS

CLOTH



Black Cloth

Gray Cloth

SPORT CLOTH



Black Sport Cloth

Gray Sport Cloth

Beige Sport Cloth

LEATHER



Black Leather

Gray Leather

Beige Leather

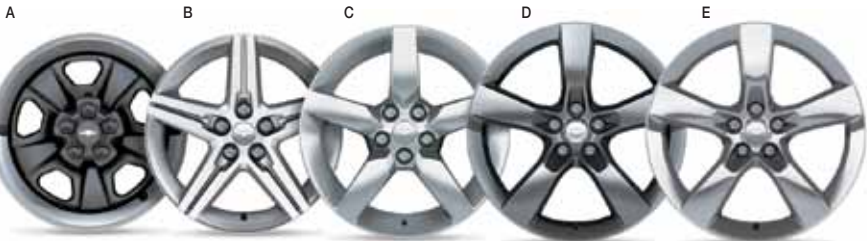
Inferno Orange Leather\*

EXTERIOR/INTERIOR COLOUR COMPATIBILITY

▼ Exterior	▼ Interior				▼ Stripes* Dual Hood and Trunk					▼ Stripes* Single Hood and Side Hockey Stick		
	Black	Beige¹	Gray	Inferno Orange²	Arctic White	Cyber Gray	Black	Silver	Orange	Black	White	Gray
GAN – Silver Ice Metallic	•	•	•	•	•	•	•			•	•	•
GAP – Imperial Blue Metallic	•	•	•		•	•	•	•		•	•	•
GAQ – Red Jewel Tintcoat*	•	•	•		•	•	•	•		•	•	•
GAZ – Summit White	•	•	•	•		•	•	•	•	•		•
GBA – Black	•	•	•	•	•	•		•	•		•	•
GBV – Cyber Gray Metallic	•	•	•	•	•		•	•	•	•		
GCN – Victory Red	•	•	•	•	•	•	•	•		•	•	•
GCO – Rally Yellow	•		•		•	•	•	•		•	•	•
GCR – Inferno Orange Metallic*	•	•	•	•	•	•	•	•		•	•	•
GHS – Synergy Green Metallic***	•				•	•	•	•		•	•	•

\*Available at extra cost. \*\*Interim availability. 1 – Not available on LS. 2 – Available on 2LT and 2SS only. Requires Inferno Orange Trim Package.

WHEELS



A – 18" x 7.5" heritage steel

B – 18" x 7.5" painted aluminum

C – 19" x 8" painted aluminum

D – 20" x 8" front and 20" x 9" rear Midnight Silver-finish

flangeless aluminum

E – 20" x 8" front and 20" x 9" rear polished aluminum

EXTERIOR COLOURS



GAN – Silver Ice Metallic



GAP – Imperial Blue Metallic



GAQ – Red Jewel Tintcoat\*



GAZ – Summit White



GBA – Black



GBV – Cyber Gray Metallic



GCN – Victory Red



GCO – Rally Yellow



GCR – Inferno Orange Metallic\*



GHS – Synergy Green Metallic\*\*\*



STRIPES – Single Hood and Side Hockey Stick



STRIPES – Dual Hood and Trunk



The exterior colours in this brochure are as close to the actual vehicle production colours as the printing process allows. For more accurate colour samples, ask your sales consultant to see the dealer showroom vehicle colour display.  
\* Available at extra cost.  
\*\* Interim availability.



