

2010 **CHEVY SUBURBAN**



THE BEST COVERAGE IN AMERICA

The 2010 Suburban is backed by the 100,000 mile/ 5-year¹ transferable Powertrain Limited Warranty. That's 40,000 more miles than Toyota or Honda offers. Add in our Roadside Assistance and Courtesy Transportation Programs, and you have the best coverage in America.

THE GET GOING LIST

The Take-It-All Vehicle.....	2
Best Coverage in America ...	2
An Inside Look.....	5
Accommodating and Entertaining	5
Impressive Safety.....	7
Cargo	8
Power and Towing.....	8

SUBURBAN CELEBRATES 75 YEARS.

Chevy Suburban continues to set industry milestones: The world's first SUV is now celebrating its 75th anniversary. For 2010, this iconic American utility vehicle stays true to its roots by delivering maximum room for people and cargo, authentic capability – and a style befitting the active families who depend on it every day. There are two models to choose from (half-ton and three-quarter-ton) so there is a Suburban to fit every family – even if you need reservations for nine.² With the help of Active Fuel Management technology, Suburban half-ton 2WD has **BETTER FUEL ECONOMY THAN ANY OF ITS COMPETITORS**, including Ford Expedition, Toyota Sequoia and Nissan Armada.³ Not only does it win at the pumps, Suburban also beats competitors with 137.4 cubic feet of **MAXIMUM CARGO CAPACITY**.⁴ Whether you're driving across the country, launching your boat or heading out on a family outing, you can depend on Chevy Suburban as so many generations have for three quarters of a century.



Suburban half-ton LTZ 2WD in Black with available dealer-installed Chevy Accessories. 1 Whichever comes first. See dealer for details. 2 Nine-passenger seating on LS models only. 3 Based on GM Large Utility segment. EPA estimated MPG city/hwy. (2WD): Suburban 15/21, Expedition 14/20, Sequoia 14/19, Armada 12/18. Excludes other GM vehicles. 4 With second row folded and third row removed. Based on GM Large Utility segment. Excludes other GM vehicles. Cargo and load capacity limited by weight and distribution.



Suburban half-ton LTZ 4WD interior in Titanium color with available features and leather-appointed seating surfaces. 1 XM Radio requires a subscription, sold separately by XM after trial period. XM Radio U.S. service only available in the 48 contiguous United States and the District of Columbia. For more information, visit gm.xmradio.com. 2 Call 1-888-4ONSTAR (1-888-466-7827), see page 14 and visit onstar.com for details and system limitations. 3 Not available in certain areas. Visit onstar.com for coverage map. 4 Map coverage excludes Puerto Rico, the Virgin Islands and portions of Canada. 5 Go to gm.com/bluetooth to find out which phones are compatible with the vehicle.

ENTERTAIN ALL OF YOUR SENSES.

The patriarch of family vehicles, Suburban is the SUV designed to carry both cargo and people. It's utilitarian, but what's most useful is its ability to keep you comfortable and entertained. Whether you're enjoying standard **XM RADIO**¹ with three trial months or the 360-degree listening experience of the Bose® Centerpoint® Surround Sound system – standard on LTZ – Suburban puts you center stage. Keeping cool or warming up is easy with LTZ since it comes with standard **HEATED AND COOLED FRONT BUCKET SEATS**; heated, second-row leather-appointed bucket seats; and a third row that features a three-person, stadium-style bench seat. And the greatest comfort is knowing you'll have help getting where you want to go with OnStar² standard for the first year and **TURN-BY-TURN NAVIGATION**³ included in the Directions & Connections Plan (standard on LT and LTZ). Simply press the OnStar button and tell an Advisor where you need to go. The route will be downloaded to your Suburban while an automated voice guides you through every turn until you get to your destination.



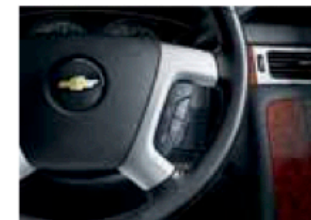
The available touch-screen navigation radio⁴ includes a 6.5-inch-diagonal color display. Standard on LTZ.



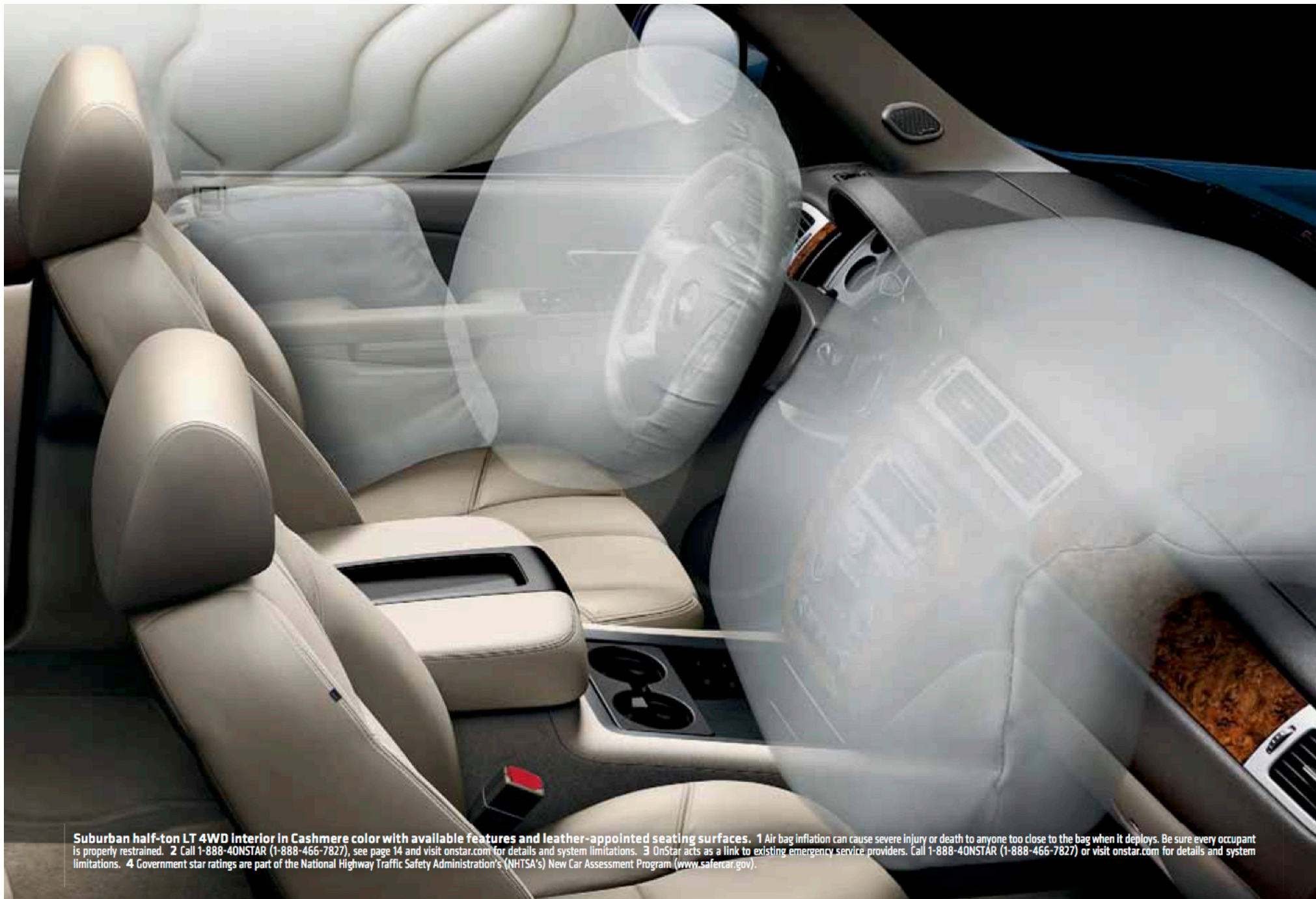
Change "Are we there yet?" to "Can we circle the block?" with the available DVD entertainment system. The system offers an 8-inch-diagonal monitor that can entertain the pickiest backseat driver.

SUBURBAN

See additional photos of Suburban at chevy.com/suburban



Bluetooth® wireless technology⁵ for select phones lets you make, answer and end calls with a tap of the steering wheel controls. In addition, as an incoming call is answered, the vehicle's audio system is conveniently and automatically muted. Bluetooth is standard on LT and LTZ models; available on LS.



Suburban half-ton LT 4WD interior in Cashmere color with available features and leather-appointed seating surfaces. 1 Air bag inflation can cause severe injury or death to anyone too close to the bag when it deploys. Be sure every occupant is properly restrained. 2 Call 1-888-4ONSTAR (1-888-466-7827), see page 14 and visit onstar.com for details and system limitations. 3 OnStar acts as a link to existing emergency service providers. Call 1-888-4ONSTAR (1-888-466-7827) or visit onstar.com for details and system limitations. 4 Government star ratings are part of the National Highway Traffic Safety Administration's (NHTSA's) New Car Assessment Program (www.safercar.gov).

OVERPROTECTIVE BY NATURE.

The most important cargo you'll ever carry is your family and friends. Suburban provides six air bags¹ – including **DUAL-STAGE FRONTAL AIR BAGS** and **FRONT SEAT-MOUNTED SIDE-IMPACT AIR BAGS** for driver and right-front passenger and **HEAD-CURTAIN SIDE-IMPACT AIR BAGS**¹ that protect outboard occupants in all three rows – giving you the peace of mind you expect from Suburban. OnStar², standard for the first year, comes with **AUTOMATIC CRASH RESPONSE**.³ If you are in a mishap, built-in vehicle sensors can automatically alert an OnStar Advisor, who is immediately connected into your vehicle and can request that emergency help be sent to your exact GPS location. Stay safe by staying on course with the standard **STABILITRAK ELECTRONIC STABILITY CONTROL SYSTEM** with Traction Control. It's designed to help you avoid what the road might throw at you by improving vehicle stability, particularly during emergency maneuvers.



An available rearview camera system helps drivers hook up to a boat or simply see certain stationary obstacles on the navigation screen (shown) or in the rearview mirror while driving in Reverse at low speeds. It's almost like having eyes in the back of your Suburban. Standard on LTZ.



Suburban LTZ can be equipped with the Side Blind Zone Alert to help make changing lanes easier. Through the use of radar, it gives you a visual warning in the outside rearview mirrors to alert you to vehicles entering your blind spots.


SUBURBAN

For the full safety story, visit
chevy.com/suburban



2010 Suburban half-ton models received the highest possible rating for frontal crash tests – five stars.⁴

SUBURBAN

For a 360-degree view,
visit chevy.com/suburban 



Be an all-terrain all-star with the available Z71 Off-Road Package on half-ton LT. It includes the legendary Z71 suspension, which combines high-pressure, gas-charged monotube shocks; a durable Skid Plate Package; rugged 18-inch wheels with on-/off-road tires; and an automatic locking rear differential to help take on the rough stuff.

CARGO CAPACITY COMPETITORS CAN'T TOUCH!

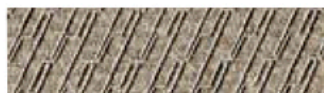
We've worked countless hours going through "what if" scenarios to make sure Suburban is up for whatever your life may demand. Got a lot of friends and family? LS comes with seating for up to nine. And we bet you don't pack light. Suburban **BEATS THE COMPETITION** when it comes to **MAXIMUM CARGO CAPACITY**¹ – giving you the space you need for your gear. Towing something big? Suburban also offers the power to get you where you want to go. In half-ton models, the **VORTEC 5.3L V8** engine produces 320 hp and 335 lb.-ft. of torque. The **VORTEC 6.0L V8**, standard in three-quarter-ton models, delivers 352 hp and 382 lb.-ft. of torque. With Vortec power under the hood, three-quarter-ton 2WD models can **TRAILER UP TO 9,600 LBS.**² – that's more than Ford Expedition and Nissan Armada.

CAPACITY	2010 CHEVY SUBURBAN 3/4-TON LS 2WD	2010 FORD EXPEDITION EL XLT 2WD	2010 NISSAN ARMADA PLATINUM 2WD
Maximum seating	9	8	8
Maximum cargo volume (cu. ft.) ¹	137.4	130.8	97.1
Maximum towing (lbs.) ²	9,600	8,900	9,100



Suburban three-quarter-ton LT 2WD in NEW Sheer Silver Metallic with available dealer-installed Chevy Accessories. 1 With second row folded and third row removed. Based on GM Large Utility segment. Excludes other GM vehicles. Cargo and load capacity limited by weight and distribution. 2 Maximum trailer weight ratings are calculated assuming a base vehicle, except for any option(s) necessary to achieve the rating, plus driver. The weight of other optional equipment, passengers and cargo will reduce the maximum trailer weight your vehicle can tow. See your Chevy dealer for additional details.

FABRICS. COLORS. WHEELS.



Cashmere Color Premium Cloth



Ebony Premium Cloth



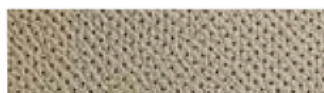
Ebony Leather Appointments



Titanium Color Leather Appointments



Cashmere Color Leather Appointments



Cashmere Color Perforated Leather Appointments

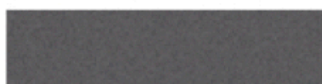


Ebony Perforated Leather Appointments



Titanium Color Perforated Leather Appointments

Summit White



NEW Taupe Gray Metallic

White Diamond Tricoat (extra-cost color; LTZ only)



Gold Mist Metallic (not available on Z71)



NEW Sheer Silver Metallic



Black Granite Metallic (extra-cost color; available through January 2010; not available on Z71 or three-quarter-ton)



Laser Blue Metallic (extra-cost color; available spring 2010; not available on three-quarter-ton)



Red Jewel Tintcoat (extra-cost color)



Black



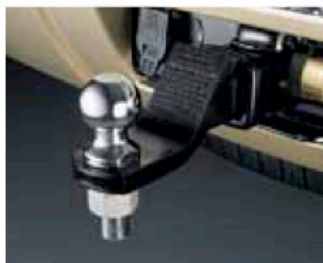
Blue Granite Metallic (not available on Z71)

- 01** Eight-lug bright machined-aluminum wheel. Standard on three-quarter-ton models.
- 02** 20" polished-aluminum wheel¹. Standard on LTZ; available on LS and LT.
- 03** 18" aluminum wheel. Requires available Z71 Off-Road Suspension Package.
- 04** 20" chrome-clad wheel¹. Available on LTZ.
- 05** 17" aluminum wheel with rectangular pockets. Standard on LS and LT. Not available with Z71 Off-Road Suspension Package.

¹ Use only GM-approved tire and wheel combinations. Unapproved combinations may change the vehicle's performance characteristics. For important tire and wheel information, go to gmaccessorieszone.com or see your dealer for details.



YOUR SUBURBAN. YOUR WAY. AVAILABLE DEALER-INSTALLED ACCESSORIES



Trailer components.



Head-restraint DVD system.



22" chrome wheels¹



ACCESSORIES

Every Chevy Accessory is covered by the GM 3-year/36,000 mile (whichever comes first) New Vehicle Limited Warranty when ordered with your vehicle. See your dealer or visit chevy.com/suburban for details and a closer look at more available accessories.



Suburban half-ton LT 4WD in Black with available dealer-installed Chevy Accessories.

SUBURBAN FEATURES.

S = Standard O = Optional – = Not Available

	HALF-TON 2WD	HALF-TON 4WD	THREE- QUARTER-TON 2WD	THREE- QUARTER-TON 4WD
MAXIMUM CAPACITIES				
Payload (lbs.) ¹	1519	1563	2429	2162
Fuel tank (gal. approx.)	31	31	39	39
Trailer weight rating (lbs.) ²	8100	7900	9600	9300
GVWR (lbs.) ³	7200	7400	8600	8600
EXTERIOR			LS	LT LTZ
Assist steps, black			S	S S
Assist steps, power-retractable with chrome accent strip			–	– 0 ⁴
Daytime Running Lamps, with Automatic Exterior Lamp Control			S	S S
Exterior Plus Package: foglamps and luggage rack cross bars			0	– –
Power-remote liftgate			–	0 ⁵ S
Rear Parking Assist: Ultrasonic			0 ⁶	S S
ENGINES/CHASSIS				
Engine: Vortec 5.3L V8 with Active Fuel Management and E85 FlexFuel ⁷ capability (half-ton only)			S	S S
Engine: Vortec 6.0L V8 with Variable Valve Timing (three-quarter-ton only)			S	S –
Suspension Package, Autoride (half-ton)			–	– S
Suspension Package, Z71 Off-Road: specially tuned springs and monotube shocks, high-capacity air cleaner, Skid Plate Package with aluminum front underbody shield, automatic locking rear differential, 18" aluminum wheels with on-/off-road blackwall tires, recovery hooks, tubular assist steps, unique front fascia with chrome grille insert, Z71-specific gauge cluster and more (half-ton only)			–	0 –
Transfer case: active, single-speed, electronic Autotrac with rotary controls ⁸ (4WD only)			S	S S
Transfer case: active, two-speed electronic Autotrac with rotary controls ⁸ (4WD only)			0	0 0
Transmission: Hydra-Matic six-speed automatic electronically controlled with overdrive and Tow/Haul mode (half-ton only)			S	S S
Transmission: Hydra-Matic six-speed automatic, heavy-duty, electronically controlled with overdrive and Tow/Haul mode (three-quarter-ton only)			S	S –

SAFETY & SECURITY

Air bags:¹⁰ driver and right-front passenger, dual-stage, frontal; passenger side includes Passenger Sensing System; head-curtain, side-impact for all outboard positions; seat-mounted air bags for driver and right-front passenger

Brakes: four-wheel antilock disc

OnStar:¹¹ Safe & Sound Plan (standard for the first year)

OnStar:¹¹ Directions & Connections Plan with Turn-by-Turn Navigation¹² (standard for the first year)

StabiliTrak Electronic Stability Control System with Traction Control

INTERIOR

Bluetooth® wireless technology¹³ for select phones

Convenience Package: power-adjustable pedals, remote vehicle starter system, Ultrasonic Rear Parking Assist, rearview camera system and rear camera display in inside rearview mirror

Luxury Package: heated front bucket seats with leather appointments, heated second-row seats with power-release function; Universal Home Remote transmitter; full-feature outside rearview mirror; power-remote liftgate; and inside auto-dimming rearview mirror

Pedals: power-adjustable for accelerator and brake

SEATING

Premium Cloth 40/20/40 split-bench front seat with six-way power driver seat

Seats: front bucket with leather-appointed seating, six-way power driver and right-front passenger seat adjusters, adjustable head restraints, driver manual lumbar control, floor console and rear storage pockets

Seats: front bucket with perforated leather-appointed seating, 12-way power driver and right-front passenger seat adjusters, power lumbar control, heated and cooled seats, 2-position driver memory (including lumbar), adjustable head restraints, storage pockets and floor console

	LS	LT	LTZ
Air bags: ¹⁰ driver and right-front passenger, dual-stage, frontal; passenger side includes Passenger Sensing System; head-curtain, side-impact for all outboard positions; seat-mounted air bags for driver and right-front passenger	S	S	S
Brakes: four-wheel antilock disc	S	S	S
OnStar: ¹¹ Safe & Sound Plan (standard for the first year)	S	–	–
OnStar: ¹¹ Directions & Connections Plan with Turn-by-Turn Navigation ¹² (standard for the first year)	0	S	S
StabiliTrak Electronic Stability Control System with Traction Control	S	S	S
Bluetooth® wireless technology ¹³ for select phones	0	S	S
Convenience Package: power-adjustable pedals, remote vehicle starter system, Ultrasonic Rear Parking Assist, rearview camera system and rear camera display in inside rearview mirror	0	–	–
Luxury Package: heated front bucket seats with leather appointments, heated second-row seats with power-release function; Universal Home Remote transmitter; full-feature outside rearview mirror; power-remote liftgate; and inside auto-dimming rearview mirror	–	0	–
Pedals: power-adjustable for accelerator and brake	0 ⁶	S	S
Premium Cloth 40/20/40 split-bench front seat with six-way power driver seat	S	–	–
Seats: front bucket with leather-appointed seating, six-way power driver and right-front passenger seat adjusters, adjustable head restraints, driver manual lumbar control, floor console and rear storage pockets	–	S	–
Seats: front bucket with perforated leather-appointed seating, 12-way power driver and right-front passenger seat adjusters, power lumbar control, heated and cooled seats, 2-position driver memory (including lumbar), adjustable head restraints, storage pockets and floor console	–	–	S

SELECT AVAILABLE FEATURES.

AUDIO SYSTEMS

	LS	LT	LTZ
USB port ¹⁴	S	S	S
XM Radio: ¹⁵ with three trial months	S	S	S
XM NavTraffic: ¹⁶ with three trial months	0 ¹⁷	0 ¹⁷	S
Audio system: AM/FM stereo with CD/MP3 player	S	S	–
Audio system with navigation: ¹⁸ AM/FM stereo with CD/MP3 player	0 ¹⁹	0 ²⁰	S
Bose 9-speaker sound system (includes subwoofer)	0 ²¹	S	–
Bose Centerpoint® Surround Sound 10-speaker system	–	–	S
Entertainment system: rear-seat DVD player with remote control	0 ²¹	0	0

WHEELS

17" bright machined-aluminum (three-quarter-ton only)	S	S	–
17" aluminum with rectangular pockets (half-ton only)	S	S	–
18" aluminum ²² (half-ton only)	–	0	–
20" polished-aluminum ²³ (half-ton only)	0	0	S
20" chrome-clad ²³	–	–	0

DEALER-INSTALLED CHEVY ACCESSORIES²⁴

20" and 22" Chrome Wheels ²³	0	0	0
Door Sill Plates	0	0	0
Dual Head-Restraint DVD System	0	0	0
Molded Splash Guards	0	0	0
Roof-Mounted Hard Cargo Carrier	0	0	0
Oval Assist Steps	0	0	0

LS

- Bose nine-speaker system²¹
- Rear-seat DVD entertainment system²¹ with remote
- DVD screen^{21,25} (third row)
- Rearview camera system²⁶

LT

- Rear-seat DVD entertainment system with remote
- Third-row DVD screen²⁷
- Rearview camera system²⁸
- XM NavTraffic^{16,17}
- Power sunroof: tilt-sliding with Express-Open/-Close and wind deflector
- Custom leather-appointed front bucket seats with 10-way power driver and right-front passenger seats⁵
- Power-remote rear liftgate⁵

LTZ

- Rear-seat DVD entertainment system with remote
- Third-row DVD screen²⁷
- Side Blind Zone Alert
- Power sunroof: tilt-sliding with Express-Open/-Close and wind deflector
- Power-retractable assist steps⁴

¹ Maximum payload capacity includes weight of driver, passengers, optional equipment and cargo. Cargo and load capacity limited by weight and distribution. ² Maximum trailer weight ratings are calculated assuming a base vehicle, except for any option(s) necessary to achieve the rating, plus driver. The weight of other optional equipment, passengers and cargo will reduce the maximum trailer weight your vehicle can tow. See your Chevy dealer for additional details. ³ Gross Vehicle Weight Rating (GVWR). When properly equipped; includes weight of vehicle, driver, passengers, cargo and optional equipment. ⁴ Requires available navigation radio and Side Blind Zone Alert. ⁵ Requires available Luxury Package. ⁶ Requires available Convenience Package. ⁷ E85 is a combination of 85% ethanol and 15% gasoline. Go to gm.com/biofuels to see if there is an E85 fuel station near you. ⁸ Requires available 3.08 rear axle ratio. Not available on three-quarter-ton models or with Heavy-Duty Trailering Package. ⁹ Requires available 3.42 rear axle ratio. ¹⁰ Always use safety belts and the correct restraint for your child's age and size. Even in vehicles equipped with the Passenger Sensing System, children are safer when properly secured in a rear-seat in the appropriate infant, child or booster seat. Never place a rear-facing infant restraint in the front seat of any vehicle equipped with a passenger air bag. See the Owner's Manual and child safety seat instructions for more safety information. ¹¹ Call 1-888-4ONSTAR (1-888-466-7827), see page 14 and visit onstar.com for details and system limitations. ¹² Not available in certain areas. Visit onstar.com for coverage map. ¹³ Go to gm.com/bluetooth to find out which phones are compatible with the vehicle. ¹⁴ Not compatible with all devices. ¹⁵ XM Radio requires a subscription, sold separately by XM after trial period. XM Radio U.S. service only available in the 48 contiguous United States and the District of Columbia. For more information, visit gm.xmradio.com. ¹⁶ Service not available in Canada, Alaska and Hawaii. XM Radio subscription required and sold separately after trial period. Fees, taxes, and a one-time reactivation fee may apply. Subscriptions governed by XM Customer Agreement available at xmradio.com/serviceterms. All fees and programming subject to change. Family programming packages are available. ¹⁷ Requires available navigation radio. ¹⁸ Map coverage excludes Puerto Rico, the Virgin Islands and portions of Canada. ¹⁹ Requires available Interior Plus Package, Convenience Package and Bose nine-speaker system. ²⁰ Requires available rearview camera system and inside auto-dimming rearview mirror. ²¹ Requires available Interior Plus Package. ²² Requires available Z71 Off-Road Suspension Package. ²³ Use only GM-approved tire and wheel combinations. Unapproved combinations may change the vehicle's performance characteristics. For important tire and wheel information, go to gmaccessorieszone.com or see your dealer for details. ²⁴ Some accessories may not be available on all models. See dealer for details. ²⁵ Requires available rear-seat entertainment system and rear audio system. ²⁶ Requires available Convenience Package; Sun, Entertainment and Destinations Package; or navigation radio. ²⁷ Requires available radio with DVD player or rear-seat entertainment system. ²⁸ Requires available inside rearview mirror with camera display or navigation radio.

CHEVY

For more information about ownership extras, please visit the websites below



onstar.com



ACCESSORIES

chevy.com/accessories



gm.xmradio.com



chevy.com/warranty

THE BEST COVERAGE IN AMERICA.

100,000 MILE/5-YEAR TRANSFERABLE POWERTRAIN LIMITED WARRANTY. Every 2010 Chevy passenger car, light-duty truck, SUV and crossover comes with a 100,000 mile/5-year (whichever comes first) transferable Powertrain Limited Warranty. Plus, you get 100,000 miles/5 years (whichever comes first) of the 24/7 Roadside Assistance Program and the Courtesy Transportation Program and much more. See dealer for details.

NEW VEHICLE LIMITED WARRANTY. GM vehicles registered in the U.S.A. are covered for 3 years/36,000 miles (whichever comes first). The complete vehicle is covered, including tires, towing to your nearest Chevrolet dealership and cosmetic corrosion resulting from defects. Repairs will be made to correct any vehicle defect, and most warranty repairs will be made at no charge. In addition, rust-through corrosion will be covered for 6 years/100,000 miles (whichever comes first). See dealer for details.

ENGINES. Chevrolet products are equipped with engines produced by GM Powertrain or other suppliers to GM worldwide. The engines in Chevrolet products may also be used in other GM makes and models.

ASSEMBLY. Chevrolet vehicles and their components are assembled or produced by different operating units of General Motors, its subsidiaries or suppliers to GM worldwide. We sometimes find it necessary to produce Chevrolet vehicles with different or differently sourced components than originally scheduled. Since some options may be unavailable when your vehicle is assembled, we suggest you verify that your vehicle includes the equipment you ordered and that, if there were changes, they are acceptable to you.

ONSTAR. OnStar services require vehicle electrical system (including battery), wireless service and GPS satellite signals to be available and operating for features to function properly. OnStar acts as a link to existing emergency service providers. Subscription Service Agreement required. Call 1-888-4ONSTAR (1-888-466-7827) or visit onstar.com for OnStar Terms and Conditions, Privacy Statement, and details and system limitations.

A NOTE ABOUT CHILD SAFETY. Always use safety belts and the correct restraint for your child's age and size. Even in vehicles equipped with the Passenger Sensing System, children are safer when properly secured in a rear seat in the appropriate infant, child or booster seat. Never place a rear-facing infant restraint in the front seat of any vehicle equipped with a passenger air bag. See the Owner's Manual and child safety seat instructions for more safety information.

IMPORTANT WORDS ABOUT THIS CATALOG. We have tried to make this catalog comprehensive and factual. We reserve the right, however, to make changes at any time, without notice, in prices, colors, materials, equipment, specifications, models and availability. Specifications, dimensions, measurements, ratings and other numbers in this catalog and other printed materials provided at the dealership or affixed to vehicles are approximates based upon design and engineering drawings, prototypes and laboratory tests. Your vehicle may differ due to variations in manufacture and equipment. Since some information may have been updated since the time of printing, please check with your Chevrolet dealer for complete details. Chevrolet reserves the right to lengthen or shorten the model year for any product for any reason or to start and end model years at different times. Certain vehicle features may lose their usefulness over time due to obsolescence from technological changes. Unless otherwise noted, all claims based on GM Large Utility segment and latest available competitive information. Excludes other GM vehicles.

TRAILERING AND OFF-ROAD DRIVING INFORMATION. Please go to chevy.com and carefully review an Owner's Manual for important safety information about trailering or off-road driving in your vehicle.

At Chevrolet, giving you a completely satisfying ownership experience is our top priority. That's why if you ever need assistance, feel free to contact us at these websites or phone numbers.

CHEVY.COM. Offers shopping tools such as Build and Price, Find a Vehicle, Request Info, Email Sign-Up, Compare Vehicles, Financial Tools...and much more.

24-HOUR ROADSIDE ASSISTANCE PROGRAM (1-800-CHEV-USA). The Chevrolet Roadside Assistance Program provides you with the following services for 100,000 miles or 5 years (whichever comes first): Emergency Towing (to closest Chevy dealer from a legal roadway), Lockout Service (keys locked inside vehicle), Flat Tire Changes (spare installed), Fuel Delivery (\$5 worth of fuel delivered on the road) and Jump Starts (at home or on the road). For specific terms and conditions, please contact your Chevrolet Roadside Assistance advisor at 1-800-243-8872. Some services may incur costs.

COURTESY TRANSPORTATION PROGRAM. Ask your Chevrolet dealer for Courtesy Transportation if you leave your vehicle for extended repairs under the New Vehicle Limited Warranty or Powertrain Limited Warranty. Ask if you qualify for expense reimbursement and/or vehicle rental. Services vary by dealer.

CHEVROLET CUSTOMER ASSISTANCE CENTER (1-800-222-1020). Talk directly to customer relationship managers who can handle any inquiries related to vehicle operation, warranty coverages, or product or service concerns you may have. Please refer to your Owner's Manual for Customer Assistance information.

CHEVY.COM/SAFETY. Chevrolet is committed to keeping you and your family safe — from the start of your journey to your destination. That's why every Chevrolet is designed with a comprehensive list of safety and security features to help give you peace of mind.

GMMOBILITY.COM (1-800-323-9935). GM Mobility offers financial assistance for eligible adaptive equipment to make automotive travel easier for persons with disabilities or special transportation needs. To learn more about special GM Mobility offers, visit gmmobility.com.

CHEVROLET OWNER CENTER (GMOWNERCENTER.COM/CHEVY). Register your vehicle with the Chevrolet Owner Center, and receive benefits such as online access to your vehicle Owner's Manual, maintenance schedule reminders, service history tracking, warranty and service information, safety information, special offers and privileges, and news and events.

MARKETING AND INCENTIVES (CHEVY.COM/SPECIALOFFERS). Call 1-800-950-CHEV (1-800-950-2438) or visit chevy.com/specialoffers for new product, current incentive and marketing program information.

GMCARDMEMBERSERVICES.COM. Did you know about the family of reward credit cards that can help you get a great deal on a new GM car, light-duty truck, SUV or crossover? With a GM reward card, you accrue earnings on every credit card purchase to use toward the purchase or lease of an eligible, new GM vehicle. With three cards to choose from, you're sure to find one that suits you best.

GM, the GM Logo, Chevrolet, the Chevrolet Logo, and the slogans, emblems, vehicle model names, vehicle body designs and other marks appearing in this catalog are the trademarks and/or service marks of General Motors, its subsidiaries, affiliates or licensors. OnStar, the OnStar Emblem, Safe & Sound and Directions & Connections are registered trademarks of OnStar LLC. SIRIUS, XM and all related marks and logos are trademarks of SIRIUS XM Radio Inc. and its subsidiaries. Bose and Centerpoint are registered trademarks of the Bose Corp. The Bluetooth word mark is a registered trademark owned by Bluetooth SIG, Inc. and any use of such mark by Chevrolet is under license. ©2009 General Motors. All rights reserved.

Litho in USA.

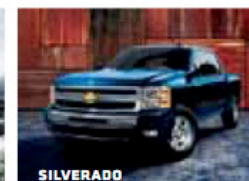
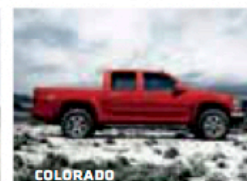
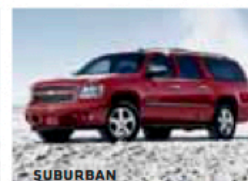
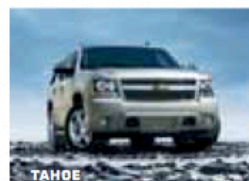
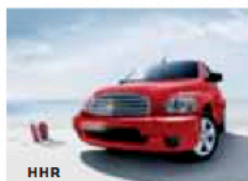
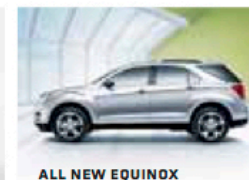
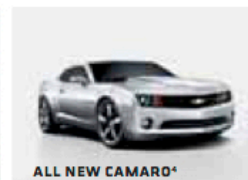
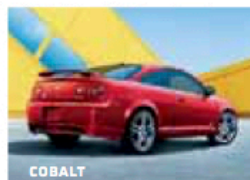
October 2009



Suburban half-ton LT 4WD in Red Jewel Tintcoat (extra-cost color) with available Z71 Off-Road Suspension Package.

 **CHEVY** To us, it's pretty simple: Build vehicles that anyone would be proud to own, and put them within reach. We offer more models than Toyota or Honda with **30 MPG HIGHWAY OR BETTER!** We're backing our quality with the **BEST COVERAGE IN AMERICA**, which includes the 100,000 mile/5-year² transferable Powertrain Limited Warranty plus Roadside Assistance and Courtesy

Transportation Programs. We're filling our cars and trucks with the kind of thinking, features and craftsmanship you'd expect to pay a lot more for. This philosophy has earned us more **CONSUMERS DIGEST "BEST BUY"** awards for 2009 models³ than any other brand. So owning a Chevy isn't just a source of transportation. It's a source of pride. **CHEVY.COM**



¹ Based on EPA estimates for 2010 Aveo Sedan, Aveo5, Cobalt, Cobalt XFE, Equinox FWD, HHR, HHR Panel and Malibu. ² Whichever comes first. See dealer for details. ³ Models include Malibu, Traverse, Silverado 1500 and others. Visit www.consumersdigest.com/award_page to see the full list of award-winning Chevy vehicles. ⁴ Limited availability.



APPROVED LOGO WILL BE PLACED BY
PRINTER WITH APPROVAL FROM FSC.