

2010 **CHEVY MALIBU**



THE BEST
COVERAGE
IN AMERICA

The 2010 Malibu is backed by the 100,000 mile/5-year¹ transferable Powertrain Limited Warranty. That's 40,000 more miles than Toyota or Honda offers. Add in our Roadside Assistance and Courtesy Transportation Programs, and you have the best coverage in America.

REASONS TO LOVE
CHEVY MALIBU

- Critically Acclaimed Quality.....2
- Best Coverage in America 2
- 360 Degrees of Safety..... 4
- Fuel Efficiency..... 6
- Precision Engineering 6
- Finely Crafted Interior..... 8
- High-Tech Connectivity10
- Surprising Options12

“MALIBU HAS BEEN THE SURPRISE OF THE
AUTOMOTIVE WORLD.” – US NEWS & WORLD REPORT

The accolades just keep pouring in. Heralded by critics and owners alike – with more than 30 awards to its credit – Chevy Malibu continues to command attention and acclaim.

The 2009 Malibu was also named a **BEST NEW FAMILY VEHICLE** by *Kelley Blue Book's* kbb.com² and a “**BEST BUY**” by *Consumers Digest*. A beautifully crafted car with a precision build and attention to detail, it's also fuel-efficient, offering up to **33 MPG**

highway.³ “...Drive one, and you'll see why we've named it an...**ALL-STAR WINNER** two years in a row.” – *AUTOMOBILE* Magazine, February 2009

★★★★★

2009 FIVE-STAR FRONTAL
AND SIDE-IMPACT
CRASH TEST RATINGS⁴

WARRANTY	2010 CHEVY MALIBU (YEARS/MILES)	2010 TOYOTA CAMRY (YEARS/MILES)	2009 HONDA ACCORD (YEARS/MILES)
LIMITED POWERTRAIN	5/100,000 ¹	5/60,000 ¹	5/60,000 ¹
ANTI-CORROSION	6/100,000 ¹	5/UNLIMITED ¹	5/UNLIMITED ¹
ROADSIDE ASSISTANCE	5/100,000 ¹	OPTIONAL	OPTIONAL
COURTESY TRANSPORTATION	5/100,000 ¹	MAY BE AVAILABLE ⁵	YES



Malibu LTZ shown in NEW Taupe Gray Metallic with available Engine Package. **1** Whichever comes first. See dealer for details. Source: manufacturers' sites. **2** For more information about the 2009 Best New Family Vehicles from *Kelley Blue Book's* kbb.com, visit www.kbb.com/family09. Kelley Blue Book is a registered trademark of Kelley Blue Book Co., Inc. **3** Malibu LT or LTZ with 2.4L 4-cylinder engine and 6-speed automatic transmission. Estimate based on GM testing. 2010 EPA estimates not yet available. **4** Side-impact crash test rating is for a model tested with standard head-curtain side-impact air bags (SABs). Government star ratings are part of the National Highway Traffic Safety Administration's (NHTSA's) New Car Assessment Program (www.safercar.gov). **5** You may be eligible for transportation assistance if it's necessary that your vehicle be kept overnight for repairs covered under warranty. See dealer for details.

MALIBU

Learn more about Malibu safety features at chevy.com/malibu

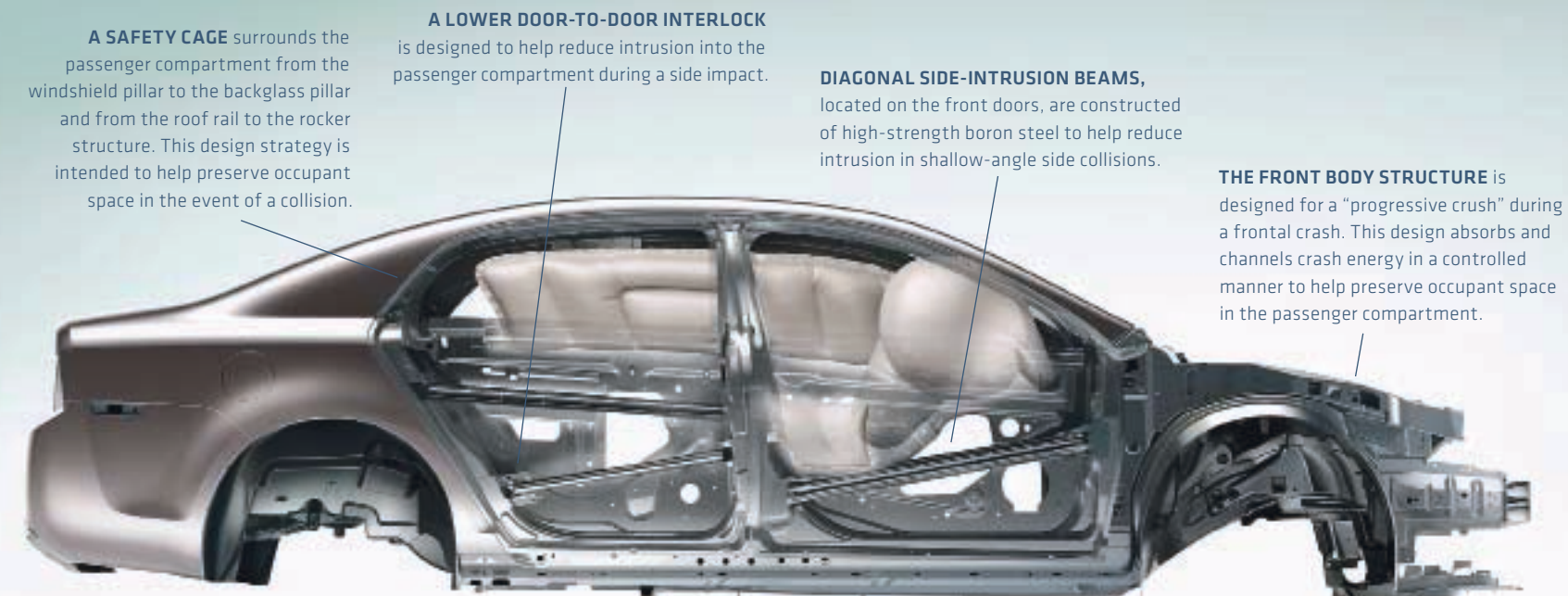


The StabilTrak Electronic Stability Control System helps you stay the course by detecting the difference between the steering wheel angle and the direction the vehicle is actually turning. It then uses the brakes and, if necessary, adjusts engine torque to help you keep your vehicle on your desired track.

REACT, REDUCE, RESPOND.

Malibu is engineered to be safe in the three ways that matter most on the road. To react to unexpected situations, every Chevy Malibu comes equipped with StabiliTrak (including Traction Control) and four-wheel antilock brakes – all standard. To reduce the effects of an accident, every Malibu has **SIX AIR BAGS¹**, including head-curtain side-impact. Furthermore, the 2009 Malibu earned the highest possible government rating – **FIVE STARS** – for frontal and side-impact crash tests.² To respond to an accident, Malibu is ready with

ONSTAR³ AUTOMATIC CRASH RESPONSE⁴ – a level of safety the competition just can't match. In certain types of collisions, built-in vehicle sensors can automatically alert an OnStar Advisor who is immediately connected into your vehicle and can request emergency help be sent to your exact GPS location. It even sends specific crash data so first responders can be prepared in advance for potential injuries. It's part of the Directions & Connections Plan, standard for the first year.



¹ Air bag inflation can cause severe injury or death to anyone too close to the bag when it deploys. Be sure every occupant is properly restrained. ² Side-impact crash test rating is for a model tested with standard head-curtain side-impact air bags (SABs). Government star ratings are part of the National Highway Traffic Safety Administration's (NHTSA's) New Car Assessment Program (www.safercar.gov). ³ Call 1-888-4ONSTAR (1-888-466-7827), see page 18 and visit onstar.com for details and system limitations. ⁴ OnStar acts as a link to existing emergency service providers.

MALIBU

See more reviews and awards for Malibu at chevy.com/malibu

The six-speed automatic transmission, standard on LT and LTZ, helps maximize the powertrain's performance through the wide spread in the gear ratios. A steep first gear helps deliver exceptional launch feel. Plus, a tall overdrive sixth gear lowers rpm at high speeds while reducing noise, vibration and harshness.



The 2010 Malibu is proof that you don't have to sacrifice comfort and capability to get the most out of a fill-up. It offers up to **33 MPG¹** highway – better than a comparable 2010 Toyota Camry or 2009 Honda Accord.² That's over **500 HIGHWAY MILES** on a single tank of gas. Engine choices include a standard 2.4L Dual Overhead Cam (DOHC) four-cylinder and an available 3.6L DOHC V6 (2LT and LTZ). A

SIX-SPEED automatic transmission is standard on LT and LTZ models. And every Malibu engine features Variable Valve Timing (VVT) – a technology that optimizes combustion, enhances low-end torque and high-end power, and helps lower emissions. Combined with nimble, responsive steering and a four-wheel independent suspension, Malibu delivers a comfortable, in-control ride.

FUEL	2010 CHEVY MALIBU	2010 TOYOTA CAMRY	2009 HONDA ACCORD
ESTIMATED HIGHWAY FUEL ECONOMY FOR COMPARABLE MODELS	33 ¹	32 ²	30 ²



Malibu 2LT shown in Red Jewel Tintcoat Metallic, an extra-cost color. 1 Malibu LT or LTZ with 2.4L 4-cylinder engine and 6-speed automatic transmission offers an estimated 33 MPG hwy. Estimate based on GM testing. 2010 EPA estimates not yet available. 2 2010 Camry with 2.5L 4-cylinder engine and available 5-speed automatic transmission offers an EPA estimated 32 MPG hwy. 2009 Accord with 2.4L 4-cylinder engine and available 5-speed automatic transmission offers an EPA estimated 30 MPG hwy.



Malibu LTZ interior shown in Cocoa/Cashmere colors with leather-appointed seats and accent piping.

“...A SERIOUS PLAYER, MALIBU HAS LOOKS, REFINEMENT AND A CLASSY INTERIOR.” – *CAR AND DRIVER*, FEBRUARY 2009

Precision meets posh in Malibu. Refined and accommodating, you'll feel pampered and pleased with spacious seating for five and a **FLOWING DUAL COCKPIT**. Malibu has thoughtful, standard conveniences, including dual glove boxes and a center console with a sliding armrest. The craftsmanship of the interior is apparent in the meticulous stitching on the seats and in the world-class fit and finish. Gaps are tight and consistent, with many being 1mm. Techniques such as liquid-applied sound deadeners and expanding foam combine with **ACOUSTIC LAMINATED GLASS** to create a noise barrier normally associated with much more expensive cars – you won't have to turn up the stereo to hear every note.



An auxiliary glove box – conveniently located in the upper instrument panel – is the ideal storage area for small items like a cell phone, CDs and sunglasses.



The six-speed automatic transmission helps maximize powertrain performance through the wide spread in the gear ratios. It includes a TAPshift manual shift control that lets you select the desired gear for performance-like driving or to address specific road conditions. It's standard on LT and LTZ.

MALIBU

For full pricing information, visit chevy.com/malibu

The remote vehicle starter system lets you start your Malibu from up to 200 feet away. It's standard on 2LT and LTZ and available on 1LT (1LT requires available Power Convenience Package). In LTZ models, the system interfaces with the automatic climate control. When the remote start is activated, the climate controls heat or cool the inside using the previous temperature settings before the vehicle was turned off.

MALIBU

See a photo gallery of Malibu
at chevy.com/malibu 

OnStar¹ Turn-by-Turn Navigation² offers a combination the competition just can't match. First, it's included in the Directions & Connections Plan and comes standard for the first year on every Malibu – not as an extra-cost option. Second, you don't need to purchase an additional nav screen to use it. Finally, with OnStar Turn-by-Turn Navigation, you won't have to stop your car to pick a new destination. Just push the blue button and an OnStar Advisor will set you up, even if you don't have the full address.

DRIVING MADE DIGITAL.

In our modern digital age, technology is changing the way we live, think and interact. It's even changing the way we drive. Take your favorite music wherever you go with a CD player with MP3 playback and



The steering wheel features mounted cruise and audio controls. Standard on LT and LTZ models and available on LS⁶. An available USB port connects your MP3 player or even a music-loaded flash drive to the audio system and puts your favorite tunes at your fingertips. Standard on LTZ and available on 2LT with Premium Audio Package.

XM RADIO³ with three trial months – all standard. OnStar¹ – with the Directions & Connections Plan standard for the first year – is more than a safety feature. It's a spontaneity feature. With the included OnStar **TURN-BY-TURN NAVIGATION²**, you can take those spur-of-the-moment side trips without a map. Available **BLUETOOTH[®]** wireless technology⁴ for select compatible phones allows hands-free calling and even mutes the stereo to take your calls. The Driver Information Center features readouts on 10 driver personalization settings as well as information on 34 vehicle functions, including oil life, tire pressure,⁵ outside temperature, trip odometer and more.



Malibu LTZ interior shown in Cocoa/Cashmere colors. 1 Call 1-888-4ONSTAR (1-888-466-7827), see page 18 and visit onstar.com for details and system limitations. 2 Not available in certain areas. Visit onstar.com for coverage map. 3 XM Radio requires a subscription, sold separately by XM after the first 90 days. XM Radio U.S. service only available in the 48 contiguous United States and the District of Columbia. For more information, visit gm.xmradio.com. 4 Go to gm.com/bluetooth to find out which Bluetooth phones are compatible with the vehicle. 5 Excludes spare tire. 6 Requires available Bluetooth wireless technology for select compatible phones.



Malibu LTZ shown in NEW Taupe Gray Metallic with available Engine Package. 1 Requires available Rear Power Package on 2LT and LTZ.

“...NEWFOUND LEVELS OF REFINEMENT AND STYLE...LEGITIMATE CONTENDER FOR BEST-IN-CLASS BRAGGING RIGHTS.” – *MOTOR TREND*

LTZ – the flagship of the Malibu line – is full of surprising indulgence and convenience. The driver and front passenger power-adjustable, **LEATHER-APPOINTED** seats are heated for those cold mornings. The Silver dual-port grille with chrome surrounds and **18-INCH, 10-SPOKE**, bright-finish wheels give it an irresistible look.



LTZ features a dual-port grille in Silver with chrome surrounds and a body-color bar.

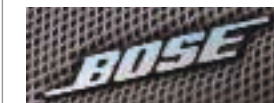


The taillamps on LTZ feature LED illumination.

The premium eight-speaker sound system, including a USB port, is standard on LTZ. Other convenient features include a remote vehicle starter system; steering wheel-mounted audio/cruise controls; heated, power-adjustable, body-color mirrors; foglamps; and LED taillamps. Available extras include a **110-VOLT HOUSEHOLD OUTLET¹** and power sunroof.

MALIBU

For a 360-degree view,
visit chevy.com/malibu

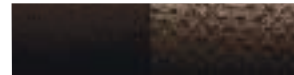


The eight-speaker Bose® sound system features woofers strategically placed in the front and rear to deliver full, powerful, low-frequency sound. A Bose amplifier with proprietary digital signal processing and six channels of custom equalization helps tune the sound specifically for Malibu. The music sounds full and detailed, speech sounds natural, and the system can approach live performance levels without sounding distorted. Read more about this innovative system from Bose at bose.com/auto. Interim availability for the 2010 model year; see dealer for details.

FABRICS. COLORS. WHEELS.



Ebony Custom Cloth



Cocoa/Cashmere Color Custom Cloth



Titanium Color Custom Cloth



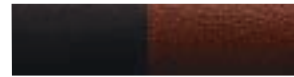
Ebony UltraLux



Cashmere Color UltraLux



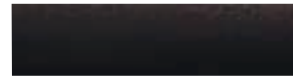
Titanium Color UltraLux



Ebony/Brick Leather Appointments



Cocoa/Cashmere Color Leather Appointments



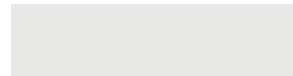
Ebony Leather Appointments



Imperial Blue Metallic



NEW Taupe Gray Metallic



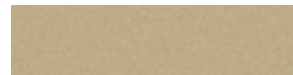
Summit White



NEW Mocha Steel Metallic



Silver Ice Metallic



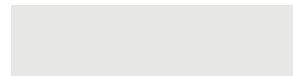
Gold Mist Metallic¹



Red Jewel Tintcoat Metallic
(2LT and LTZ; extra-cost color)



Black Granite Metallic
(extra-cost color)



NEW White Diamond Tricoat
(2LT and LTZ; extra-cost color)

01 17" fascia-spoke wheel. Standard on 1LT with bright chrome trim (shown). Standard on LS with painted Sterling Silver trim.

02 NEW 17" Chrome-Tech aluminum wheel. Standard on 2LT.

03 18" five-spoke bright-finish aluminum wheel. Available on 2LT; requires available Engine Package.

04 18" ten-spoke bright-finish aluminum wheel. Standard on LTZ.



YOUR MALIBU. YOUR WAY. AVAILABLE DEALER-INSTALLED ACCESSORIES



Two-way advanced remote vehicle starter system.



Remote vehicle starter system (LS only).



Rear-seat DVD entertainment system.

01 17" forged-polished wheel.

02 18" seven-spoke cast-chrome wheel.

03 18" ten-spoke cast-chrome wheel.

SEE MORE AT CHEVY.COM:

- Premium all-weather floor mats.
- Body-side moldings.
- Molded splash guards.
- Rear spoiler.
- Personal Audio Link (PAL)²



01



02



03



ACCESSORIES

Every Chevy Accessory is covered by the GM 3-year/36,000-mile (whichever comes first) New Vehicle Limited Warranty when ordered with your vehicle. See your dealer or visit chevy.com/malibu for details and a closer look at more available accessories.

¹ Not available with 3.5L V6 engine. ² Not compatible with iPod® shuffle™. May not be compatible with some older iPod® models.

MALIBU FEATURES. S = Standard O = Optional — = Not Available

MAXIMUM CAPACITIES				
Cargo volume (cu. ft.) ¹	15.1			
Fuel tank (gal. approx.)	16			
Seating	5			
EXTERIOR	LS	1LT	2LT	LTZ
Door handles: body-color	S	S	S	—
Door handles: chrome	—	—	—	S
Foglamps: front, integral, in front fascia	—	—	—	S
Grille: — Black insert with chrome surround	S	S	S	—
— Silver insert with chrome surround	—	—	—	S
Glass: — acoustic laminated, front and side	S	S	S	S
— Solar-Ray light-tinted	S	S	S	S
Headlamps: halogen composite with crystalline-like lenses and Automatic Exterior Lamp Control	S	S	S	S
Mirrors: — power-adjustable, manual-folding, Black	S	—	—	—
— power-adjustable, manual-folding, body-color	—	S	S	—
— power-adjustable, heated, with driver-side, auto-dimming, manual-folding, body-color	—	—	—	S
Moldings: — body-side, body-color	O	O	O	—
— rocker, body-color	S	—	—	—
— rocker, body-color with bright inserts	—	S	S	S
Taillamps: — incandescent	S	S	S	—
— LED illumination	—	—	—	S
ENGINES/CHASSIS				
Engine: — ECOTEC 2.4L DOHC 4-cylinder with Variable Valve Timing (VVT)	S	S	S	S
— 3.6L V6 with VVT	—	—	O	O
Battery: maintenance-free, with rundown protection	S	S	S	S
Exhaust tip: — chrome	—	—	S	S
— dual, chrome	—	—	O ²	O ²
Steering: — Electric Power Steering (EPS) Assist	S	S	S	S
— Hydraulic Power Steering (HPS) Assist	—	—	O ²	O ²
Suspension: — four-wheel independent	S	S	S	S
TAPshift manual shift control (on steering wheel)	—	S	S	S
Transmission: — four-speed automatic with overdrive	S	—	—	—
— six-speed automatic with overdrive	—	S	S	S
SAFETY & SECURITY				
Air bags: ³ driver, front passenger dual-stage frontal with Passenger Sensing System and thorax side-impact; head-curtain side-impact for front and rear outboard seating positions	S	S	S	S

SAFETY & SECURITY (CONTINUED)	LS	1LT	2LT	LTZ
Brakes: four-wheel antilock, four-wheel disc	S	S	S	S
Door locks: child security, rear	S	S	S	S
Daytime Running Lamps	S	S	S	S
OnStar ⁴ with one-year Directions & Connections Plan	S	S	S	S
StabiliTrak Electronic Stability Control System with Brake Assist: includes Traction Control	S	S	S	S
Vehicle theft-deterrent system: PASS-Key III+	S	S	S	S
Tire Pressure Monitor (excludes spare tire)	S	S	S	S
INTERIOR				
Air conditioning: — single zone, manual	S	S	S	—
— single zone, automatic climate control	—	—	—	S
Bluetooth [®] wireless technology ⁵ for select compatible phones	O	O ⁶	S	S
Console, floor: shifter, integral sliding armrest and dual storage compartments	S	S	S	S
Cruise control: electronic with Set and Resume Speed	S	S	S	S
Defogger: rear window, electric	S	S	S	S
Door locks: power-programmable	S	S	S	S
Driver Information Center: Oil-Life and Tire Pressure Monitors, outside temperature display, trip odometer and programmable menu functions	S	S	S	S
Floor mats: — carpeted, front and rear	O	S	S	—
— premium carpeted, front and rear	—	O ⁷	O ⁷	S
Instrumentation: analog with speedometer, engine temperature, fuel and tachometer	S	S	S	S
Lighting: interior with front reading lamps	S	S	S	S
Power Convenience Package: driver six-way power seat adjuster, remote vehicle starter system and Bluetooth [®] wireless technology ⁵ for select compatible phones	—	O	—	—
Premium Mat Package: trunk mat and premium carpeted front and rear floor mats	—	O	O	—
Rear Power Package: rear power center (110-volt AC adaptor with three-prong outlet) and manual backglass shade	—	—	O	O
Remote Keyless Entry, enhanced range	S	S	—	—
Remote vehicle starter system with Remote Keyless Entry, enhanced range	—	O ⁶	S	S
Steering column: tilt and telescopic	S	S	S	S
Steering wheel: — mounted cruise control	S	—	—	—
— mounted audio/cruise controls	O ⁸	S	—	—
— leather-wrapped, mounted audio/cruise controls	—	—	S	S
Sunroof: power, tilt/sliding	—	O	O	O

SEATING	LS	1LT	2LT	LTZ
Front buckets with reclining seatbacks and adjustable head restraints; driver power-adjustable vertical height and power lumbar; 60/40 split-folding rear seatbacks and adjustable outboard head restraints	S	S	—	—
— Custom Cloth				
— UltraLux with six-way power driver adjuster				
— two-tone with leather appointments and eight-way power driver and six-way power passenger adjuster	—	—	—	S
— heated front seats	—	—	S	S
AUDIO SYSTEMS				
AM/FM stereo, CD player/MP3 playback, digital clock, seek-scan, Radio Data System (RDS), ⁹ automatic volume, TheftLock and auxiliary audio input jack	S	S	S	S
Six-speaker system	S	S	S	—
Premium Audio Package: USB port and eight speakers with two subwoofers	—	—	O	S
USB port	—	—	O ¹⁰	S
XM Radio: ¹¹ with three trial months	S	S	S	S
WHEELS				
17" fascia-spoke painted Sterling Silver trim	S	—	—	—
17" fascia-spoke with bright chrome trim	—	S	—	—
NEW 17" Chrome-Tech aluminum	—	—	S	—
18" five-spoke bright-finish aluminum	—	—	O ²	—
18" ten-spoke bright-finish aluminum	—	—	—	S
Spare tire and wheel, compact	O	O	O	O
Tire sealant and inflator kit (no spare tire)	S	S	S	S

SELECT AVAILABLE FEATURES.

- MALIBU LS**

 - Bluetooth[®] wireless technology⁵ for select compatible phones with steering wheel-mounted audio controls
 - Body-color, body-side moldings

MALIBU 1LT

 - Body-color, body-side moldings
 - Power Convenience Package: driver six-way power seat adjuster, remote vehicle starter system and Bluetooth[®] wireless technology⁵ for select compatible phones
 - Power, tilt/sliding sunroof
 - Premium Mat Package: trunk mat and premium carpeted front and rear floor mats
 - Rear power center: 110-volt AC adapter with three-prong outlet
- MALIBU 2LT**

 - 3.6L V6 engine with Variable Valve Timing (VVT) and 18" five-spoke bright-finish aluminum wheels
 - Premium Audio Package: USB port and eight speakers with two subwoofers
 - Rear Power Package: rear power center and manual backglass shade
 - Power, tilt/sliding sunroof

MALIBU LTZ

 - 3.6L V6 engine with Variable Valve Timing (VVT)
 - Rear Power Package: rear power center and manual backglass shade
 - Power, tilt/sliding sunroof

¹ Cargo and load capacity limited by weight and distribution. ² Requires available Engine Package. ³ Always use safety belts and the correct restraint for your child's age and size. Even in vehicles equipped with the Passenger Sensing System, children are safer when properly secured in a rear seat in the appropriate infant, child or booster seat. Never place a rear-facing infant restraint in the front seat of any vehicle equipped with a passenger air bag. See the Owner's Manual and child safety seat instructions for more safety information. ⁴ Call 1-888-4ONSTAR (1-888-466-7827), see page 18 and visit onstar.com for details and system limitations. ⁵ Go to gm.com/bluetooth to find out which Bluetooth phones are compatible with the vehicle. ⁶ Requires available Power Convenience Package. ⁷ Requires available Premium Mat Package. ⁸ Requires available Bluetooth wireless technology for select compatible phones. ⁹ RDS functions only where stations broadcast RDS information. ¹⁰ Requires available Premium Audio Package. ¹¹ XM Radio requires a subscription, sold separately by XM after the first 90 days. XM Radio U.S. service only available in the 48 contiguous United States and the District of Columbia. For more information, visit gm.xmradio.com.

CHEVY

For more information about ownership extras, please visit the websites below.



onstar.com



chevy.com/accessories



gm.xmradio.com



chevy.com/warranty

THE BEST COVERAGE IN AMERICA.

100,000 MILE/5-YEAR TRANSFERABLE POWERTRAIN LIMITED WARRANTY. Every 2010 Chevy passenger car, light-duty truck, SUV and crossover comes with a 100,000 mile/5-year (whichever comes first) transferable Powertrain Limited Warranty. Plus, you get 100,000 miles/5 years (whichever comes first) of the 24/7 Roadside Assistance Program and the Courtesy Transportation Program and much more. See dealer for details.

NEW VEHICLE LIMITED WARRANTY. GM vehicles registered in the U.S.A. are covered for 3 years/36,000 miles (whichever comes first). The complete vehicle is covered, including tires, towing to your nearest Chevrolet dealership and cosmetic corrosion resulting from defects. Repairs will be made to correct any vehicle defect, and most warranty repairs will be made at no charge. In addition, rust-through corrosion will be covered for 6 years/100,000 miles (whichever comes first). See dealer for details.

ENGINES. Chevrolet products are equipped with engines produced by GM Powertrain or other suppliers to GM worldwide. The engines in Chevrolet products may also be used in other GM makes and models.

ASSEMBLY. Chevrolet vehicles and their components are assembled or produced by different operating units of General Motors, its subsidiaries or suppliers to GM worldwide. We sometimes find it necessary to produce Chevrolet vehicles with different or differently sourced components than originally scheduled. Since some options may be unavailable when your vehicle is assembled, we suggest you verify that your vehicle includes the equipment you ordered and that, if there were changes, they are acceptable to you.

ONSTAR. OnStar services require vehicle electrical system (including battery), wireless service and GPS satellite signals to be available and operating for features to function properly. OnStar acts as a link to existing emergency service providers. Subscription Service Agreement required. Call 1-888-4ONSTAR (1-888-466-7827) or visit onstar.com for OnStar Terms and Conditions, Privacy Statement, and details and system limitations.

A NOTE ABOUT CHILD SAFETY. Always use safety belts and the correct restraint for your child's age and size. Even in vehicles equipped with the Passenger Sensing System, children are safer when properly secured in a rear seat in the appropriate infant, child or booster seat. Never place a rear-facing infant restraint in the front seat of any vehicle equipped with a passenger air bag. See the Owner's Manual and child safety seat instructions for more safety information.

IMPORTANT WORDS ABOUT THIS CATALOG. We have tried to make this catalog comprehensive and factual. We reserve the right, however, to make changes at any time, without notice, in prices, colors, materials, equipment, specifications, models and availability. Specifications, dimensions, measurements, ratings and other numbers in this catalog and other printed materials provided at the dealership or affixed to vehicles are approximates based upon design and engineering drawings, prototypes and laboratory tests. Your vehicle may differ due to variations in manufacture and equipment. Since some information may have been updated since the time of printing, please check with your Chevrolet dealer for complete details. Chevrolet reserves the right to lengthen or shorten the model year for any product for any reason or to start and end model years at different times. Certain vehicle features may lose their usefulness over time due to obsolescence from technological changes. Unless otherwise noted, all claims based on 2009 GM Mid-Car Sedan segment and latest available competitive information. Excludes other GM vehicles.

At Chevrolet, giving you a completely satisfying ownership experience is our top priority. That's why if you ever need assistance, feel free to contact us at these websites or phone numbers.

CHEVY.COM. Offers shopping tools such as Build and Price, Find a Vehicle, Request Info, Email Sign-Up, Compare Vehicles, Financial Tools...and much more.

24-HOUR ROADSIDE ASSISTANCE PROGRAM (1-800-CHEV-USA). The Chevrolet Roadside Assistance Program provides you with the following services for 100,000 miles or 5 years (whichever comes first): Emergency Towing (to closest Chevy dealer from a legal roadway), Lockout Service (keys locked inside vehicle), Flat Tire Changes (spare installed), Fuel Delivery (\$5 worth of fuel delivered on the road) and Jump Starts (at home or on the road). For specific terms and conditions, please contact your Chevrolet Roadside Assistance advisor at 1-800-243-8872. Some services may incur costs.

COURTESY TRANSPORTATION PROGRAM. Ask your Chevrolet dealer for Courtesy Transportation if you leave your vehicle for extended repairs under the New Vehicle Limited Warranty or Powertrain Limited Warranty. Ask if you qualify for expense reimbursement and/or vehicle rental. Services vary by dealer.

CHEVROLET CUSTOMER ASSISTANCE CENTER (1-800-222-1020). Talk directly to customer relationship managers who can handle any inquiries related to vehicle operation, warranty coverages, or product or service concerns you may have. Please refer to your Owner's Manual for Customer Assistance information.

CHEVY.COM/SAFETY. Chevrolet is committed to keeping you and your family safe — from the start of your journey to your destination. That's why every Chevrolet is designed with a comprehensive list of safety and security features to help give you peace of mind.

GMMOBILITY.COM (1-800-323-9935). GM Mobility offers financial assistance for eligible adaptive equipment to make automotive travel easier for persons with disabilities or special transportation needs. To learn more about special GM Mobility offers, visit gmmobility.com.

CHEVROLET OWNER CENTER (GMOWNERCENTER.COM/CHEVY). Register your vehicle with the Chevrolet Owner Center, and receive benefits such as online access to your vehicle Owner's Manual, maintenance schedule reminders, service history tracking, warranty and service information, safety information, special offers and privileges, and news and events.

MARKETING AND INCENTIVES (CHEVY.COM/SPECIAL OFFERS). Call 1-800-950-CHEV (1-800-950-2438) or visit chevy.com/specialoffers for new product, current incentive and marketing program information.

GMCARDMEMBERSERVICES.COM. Did you know about the family of reward credit cards that can help you get a great deal on a new GM car, light-duty truck, SUV or crossover? With a GM reward card, you accrue earnings on every credit card purchase to use toward the purchase or lease of an eligible, new GM vehicle. With three cards to choose from, you're sure to find one that suits you best.

GM, the GM Logo, Chevrolet, the Chevrolet Logo, and the slogans, emblems, vehicle model names, vehicle body designs and other marks appearing in this catalog are the trademarks and/or service marks of General Motors Corporation, its subsidiaries, affiliates or licensors. OnStar, the OnStar Emblem and Directions & Connections are registered trademarks of OnStar LLC. SIRIUS, XM and all related marks and logos are trademarks of SIRIUS XM Radio Inc. and its subsidiaries. The Bluetooth word mark is a registered trademark owned by Bluetooth SIG, Inc. and any use of such mark by Chevrolet is under license. iPod is a mobile digital device. iPod is a registered trademark and iPod shuffle is a trademark of Apple, Inc. All rights reserved. Bose is a registered trademark of the Bose Corp. ©2009 General Motors Corporation. All rights reserved.

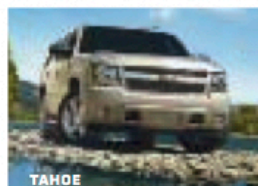
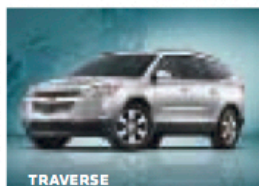
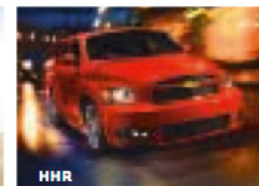
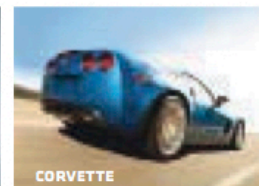
Litho in USA. June 2009



Malibu 1LT shown in Black Granite Metallic, an extra-cost color, with available dealer-installed accessory exhaust tip.

 **CHEVY** To us, it's pretty simple: Build vehicles that anyone would be proud to own, and put them within reach. We've made sure that no one offers more models with **30 MPG HIGHWAY OR BETTER.¹** We're backing our quality with the **BEST COVERAGE IN AMERICA,** which includes the 100,000 mile/5-year² transferable Powertrain Limited Warranty plus Roadside Assistance and Courtesy

Transportation Programs. We're filling our cars and trucks with the kind of thinking, features and craftsmanship you'd expect to pay a lot more for. This philosophy has earned us more **CONSUMERS DIGEST "BEST BUY"** awards for 2009 models³ than any other brand. So owning a Chevy isn't just a source of transportation. It's a source of pride. **CHEVY.COM**



¹ EPA estimated. Models include Aveo, Aveo5, Cobalt, Cobalt XFE, HHR, HHR Panel, select Malibu models and 2010 Equinox. ² Whichever comes first. See dealer for details. ³ Models include Malibu, Traverse, Silverado 1500 and others. Visit www.consumersdigest.com/award_page to see the full list of award-winning Chevy vehicles. ⁴ Available to order. ⁵ Available July 2009.