

# Silverado HD



Specifications shown do not come standard on all models. Please refer to the local Dealer for details



Together  
let's drive™



# Dependability

With the unstoppable Silverado HD, you're always in command. An enhanced powerful gasoline engine, 6.6 L V8 with Direct Injection and Variable Valve Timing, is paired with the hardworking Allison® 10-speed transmission. Add in advanced towing technology and a commanding interior, and you'll be in charge of your surroundings wherever you travel.



Specifications shown do not come standard on all models. Please refer to the local Dealer for details



# Design

- Bold design
- Advanced grille, taillamps and fascia
- Robust interior





# Driving Dynamics



Specifications shown do not come standard on all models. Please refer to the local Dealer for details

- Autotrac 2-speed transfer case that offers four drive modes
- Long wheelbase, stiff frame and shear-style body mounts
- Short/long arm suspension
- Digital Variable Steering Assist – standard on LTZ and Extended-Hold Hill Start Assist
- Brake Pad Life Monitor
- Electric Parking Brake with Steep Grade Apply and Park Grade Hold Assist

# Powertrains



- 6.6L V8 gas engine with 10-speed transmission
- 629 Nm of torque
- 401 horsepower
- 8,392 kg maximum trailering weight<sup>1,2</sup>
- Direct Injection and Variable Valve Timing
- Dual alternators

Due to global Semi-Conductor supply shortages and software issues, GM vehicles may not have some standard features and options. Please check with your local Chevrolet dealer to confirm the vehicle's specifications prior to purchase. Vehicles not equipped with Automatic Stop/Start will be less fuel efficient.

<sup>1</sup> Requires Silverado 2500HD Crew Cab 4WD and available gooseneck or fifth-wheel hitch.

<sup>2</sup> Before you buy a vehicle or use it for trailering, carefully review the Trailering section of the Owner's Manual. The weight of passengers, cargo and options or accessories may reduce the amount you can tow.

## Engineering

# Capable of just about anything.

Bring it on. Because the Silverado HD is equipped to handle tough challenges.

We have used seven different types of steel, with each gauge chosen to maximize capability. This means we used the right material in the right place to help do the right job.

Everything about this truck has been optimized for durability and dependability to help ensure you're driving the strongest, most capable Silverado HD ever.

- The chassis is 20% stiffer than the previous generation
- High-strength and ultra-high-strength steel throughout cab and frame
- Fully boxed ladder-type frame with nine high-strength steel cross members
- Integral front-end structure





# Groundbreaking trailering & performance.

- 10 speed Allison® transmission
- Trailer camera provisions<sup>1</sup>
- Trailering package with hitch guidance<sup>2</sup>



US specification vehicle pictured, options and feature availability may vary by market.

<sup>1</sup> Safety features are no substitute for the driver's responsibility to operate the vehicle in a safe manner. The driver should remain attentive to traffic, surroundings and road conditions at all times. Read the Owner's Manual for more important safety information.

<sup>2</sup> Maximum Trailering capacity for Regular Cab Long Box 2WD 2500 HD vehicles with the standard Gasoline 6.6 L V8 engine. Maximum trailer ratings are calculated assuming standard equipped vehicle, driver and required trailering equipment. The weight of optional equipment, passengers and cargo will reduce the maximum trailer weight your vehicle can tow.



## Technology

# Work your connections.

- Chevrolet Infotainment System<sup>1</sup> with Google Built-in<sup>2</sup> powered by OnStar<sup>®6</sup>, 13.4" diagonal HD color touchscreen and available enhanced voice recognition.
- Apple CarPlay<sup>®3</sup> and Android Auto<sup>™4</sup> compatibility
- 12.3" Driver Information Center
- Google Automotive Services
- Advanced safety features<sup>5</sup>
- Remote keyless entry
- OnStar<sup>®6</sup> Connect Plan<sup>7</sup> upon activation
- OnStar<sup>®6</sup> Wi-Fi<sup>8</sup> trial for 3GB/90 days (whichever comes first)

Due to global Semi-Conductor supply shortages and software issues, GM vehicles may not have some standard features and options. Please check with your local Chevrolet dealer to confirm the vehicle's specifications prior to purchase. Vehicles not equipped with Automatic Stop/Start will be less fuel efficient.

**1** Chevrolet Infotainment System functionality varies by model. Full functionality requires compatible Bluetooth and smartphone, and USB connectivity for some devices **2** Google built-in services are subject to limitations, and availability may vary by vehicle, infotainment system and location. Certain Google actions and functionalities may require account linking. User terms and privacy statement apply. Google, Google Play and Google Maps are trademarks of Google LLC **3** Vehicle user interface is a product of Apple and its terms and privacy statements apply. Requires compatible iPhone and data plan rates apply. Apple CarPlay, iPhone, Siri and Apple Music are trademarks of Apple Inc., registered in the U.S. and other countries. **4** Vehicle user interface is a product of Google and its terms and privacy statements apply. Requires the Android Auto app on Google Play and a compatible Android smartphone. Data plan rates apply. You can check which smartphones are compatible at [g.co/androidauto/requirements](https://g.co/androidauto/requirements). **5** Safety features are no substitute for the driver's responsibility to operate the vehicle in a safe manner. The driver should remain attentive to traffic, surroundings and road conditions at all times. Read the Owner's Manual for more important safety information. **6** Requires equipped vehicle, active OnStar plan, and Wi-Fi data plan with carrier. OnStar plans and Wi-Fi data plans not available in all countries. See [onstararabia.com](https://onstararabia.com) for equipped vehicles, service availability and system limitations. **7** Requires paid OnStar subscription. Services are subject to user terms and limitations. Remote start requires GM factory-installed and enabled remote start system. Lock/unlock feature requires automatic locks. The Connect Plan does not include emergency or security services. See Plans and Pricing for details. **8** Requires equipped vehicle, active OnStar plan, and Wi-Fi data plan with carrier. OnStar plans and Wi-Fi data plans not available in all countries. See [onstararabia.com](https://onstararabia.com) for equipped vehicles, service availability and system limitations. Wi-Fi services available in UAE and Kuwait only.





# Seamless experience with Google Built in<sup>1</sup> powered by OnStar<sup>®2</sup>

- Google Built-in powered by OnStar<sup>®2</sup> provides access to Google Assistant, Google Maps and Google Play right on the Infotainment screen
- Interface – App-based interface offers screen layouts and ways to interact with features
- Voice Control – Get direction, listen to music and control vehicle functions
- Navigation – Provides real-time information, crowd-sourced traffic
- In-Vehicle App – Download apps designed for vehicle, and listen to music, podcasts, audiobooks

[Explore More](#)

Available on LT & LTZ. <sup>1</sup> Google built-in services are subject to limitations, and availability may vary by vehicle, infotainment system and location. Certain Google actions and functionalities may require account linking. User terms and privacy statement apply. Google, Google Play and Google Maps are trademarks of Google LLC. <sup>2</sup> Requires equipped vehicle, active OnStar plan, and Wi-Fi data plan with carrier. OnStar plans and Wi-Fi data plans not available in all countries. See [onstararabia.com](http://onstararabia.com) for equipped vehicles, service availability and system limitations. Due to global Semi-Conductor supply shortages and software issues, GM vehicles may not have some standard features and options. Please check with your local Chevrolet dealer to confirm the vehicle's specifications prior to purchase. Vehicles not equipped with Automatic Stop/Start will be less fuel efficient.





Connected by



## Connected to the road ahead with OnStar®<sup>1</sup>

Experience the amazing in-vehicle connected technology of OnStar®<sup>1</sup> in the Silverado HD, now with 3 years of OnStar®<sup>1</sup> Connect Plan<sup>2</sup>



OnStar®<sup>1</sup> Connected Services<sup>3</sup> will keep you seamlessly connected to your Silverado HD – feel the power of remote commands at your fingertips. Stay entertained with all your



With over 25 years experience in delivering in-vehicle services, OnStar® gives you added peace of mind knowing that a trained Advisor is ready to help 24/7.



Take the same connectivity and entertainment that you love and enjoy at home with you on your travels, thanks to a robust built-in 4G LTE Wi-Fi<sup>3</sup> that delivers a fast and dependable experience, making it utterly seamless.

[Explore More](#)

1 Requires equipped vehicle, active OnStar plan, and Wi-Fi data plan with carrier. OnStar plans and Wi-Fi data plans not available in all countries. See [onstararabia.com](http://onstararabia.com) for equipped vehicles, service availability and system limitations. 2 Requires paid OnStar subscription. Services are subject to user terms and limitations. Remote start requires GM factory-installed and enabled remote start system. Lock/unlock feature requires automatic locks. The Connect Plan does not include emergency or security services. See Plans and Pricing for details. 3 Requires equipped vehicle, active OnStar plan, and Wi-Fi data plan with carrier. OnStar plans and Wi-Fi data plans not available in all countries. See [onstararabia.com](http://onstararabia.com) for equipped vehicles, service availability and system limitations. Wi-Fi services available in UAE and Kuwait only.



## Camera Technologies

# Seeing is believing.

Silverado HD offers up to 14 camera views, which come in handy when hitching up, backing up or just maneuvering the road around you. You can even choose the Bed view Camera, or Rear Camera Mirror as individual available features.

Views enabled by these cameras are easily accessed by selecting the camera app on the touchscreen display.

Some camera views require available accessory camera and installation. Not compatible with all trailers. See your dealer for details. Safety features are no substitute for the driver's responsibility to operate the vehicle in a safe manner. The driver should remain attentive to traffic, surroundings and road conditions at all times. Read the Owner's Manual for more important safety information.





## Safety and driver assistance

A commitment to safety is one of our greatest strengths.



Connected by



Roll over to see the details



**Safety starts with you.** Get access to 24/7 Advisors, Advanced Safety with Automatic Crash Response and Assistance Roadside Assistance powered by OnStar<sup>®1</sup>

<sup>1</sup> Requires equipped vehicle, active OnStar plan, and Wi-Fi data plan with carrier. OnStar plans and Wi-Fi data plans not available in all countries. See [onstararabia.com](http://onstararabia.com) for equipped vehicles, service availability and system limitations. Due to global Semi-Conductor supply shortages and software issues, GM vehicles may not have some standard features and options. Please check with your local Chevrolet dealer to confirm the vehicle's specifications prior to purchase. Vehicles not equipped with Automatic Stop/Start will be less fuel efficient. Safety features are no substitute for the driver's responsibility to operate the vehicle in a safe manner. The driver should remain attentive to traffic, surroundings and road conditions at all times. Read the Owner's Manual for more important safety information.



# Models

# Work Truck

Available on 2500HD and 3500HD. In addition to standard equipment, WT includes:

- 6.6L V8 with 401 HP and 629 Nm
- 10-speed automatic transmission
- Recirculating ball with smart flow power steering system
- 2-speed electronic transfer case (4x4 models)
- Semigloss Black front and rear bumpers
- Vertical trailering<sup>5</sup>, manual-adjustable, manual-folding and manual-extending with lower convex mirrors
- Manual lift tailgate
- 3.5-inch diagonal Driver Information Center
- Apple CarPlay<sup>®2</sup> and Android Auto<sup>™3</sup> compatibility<sup>4</sup>
- Chevrolet Infotainment System<sup>1</sup> 7” diagonal HD color touchscreen.

Work Truck
LT
LTZ



Specifications shown do not come standard on all models. Please refer to the local Dealer for details

Due to global Semi-Conductor supply shortages and software issues, GM vehicles may not have some standard features and options. Please check with your local Chevrolet dealer to confirm the vehicle’s specifications prior to purchase.

Vehicles not equipped with Automatic Stop/Start will be less fuel efficient.

Chevrolet Infotainment System functionality varies by model. Full functionality requires compatible Bluetooth and smartphone, and USB connectivity for some devices. 2 Vehicle user interface is a product of Apple and its terms and privacy statements apply. Requires compatible iPhone and data plan rates apply. Apple CarPlay, iPhone, Siri and Apple Music are trademarks of Apple Inc., registered in the U.S. and other countries. 3 Vehicle user interface is a product of Google and its terms and privacy statements apply. Requires the Android Auto app on Google Play and a compatible Android smartphone. Data plan rates apply. You can check which smartphones are compatible at [g.co/androidauto/requirements](https://g.co/androidauto/requirements). 4 Not compatible with all devices. 5 Maximum Trailering capacity for Regular Cab Long Box 2WD 2500 HD vehicles with the standard Gasoline 6.6 L V8 engine. Maximum trailer ratings are calculated assuming standard equipped vehicle, driver and required trailering equipment. The weight of optional equipment, passengers and cargo will reduce the maximum trailer weight your vehicle can tow.

1



# Models

## LT

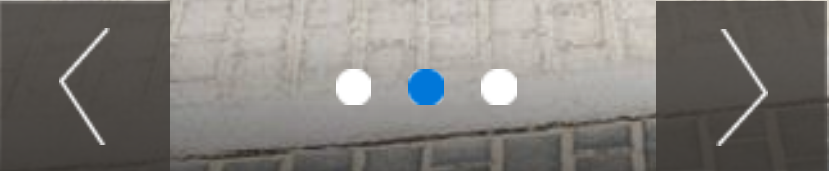
Available on 2500HD and 3500HD. In addition to standard equipment, LT includes:

- Chrome front and rear bumpers
- Vertical trailing mirror, heated upper glass, power adjustable, manual-folding and manual extending with lower convex mirrors with integrated turn signal indicators
- Manual tailgate with EZ lift
- Compass in instrument cluster
- Electronic cruise control
- 12.3” Configurable Driver Information Center
- Chevrolet Infotainment System<sup>1</sup> with Google Built-in<sup>2</sup> powered by OnStar<sup>®3</sup> 13.4” diagonal HD color touch screen and available enhanced voice recognition
- Remote Keyless entry
- 3 Year OnStar<sup>®3</sup> Connect Plan<sup>4</sup> upon activation
- OnStar<sup>®3</sup> Wi-Fi<sup>5</sup> trial for 3GB/90 days (whichever comes first)

Work Truck

LT

LTZ



Specifications shown do not come standard on all models. Please refer to the local Dealer for details.  
1 Chevrolet Infotainment System functionality varies by model. Full functionality requires compatible Bluetooth and smartphone, and USB connectivity for some devices. 2 Google built-in services are subject to limitations, and availability may vary by vehicle, infotainment system and location. Certain Google actions and functionalities may require account linking. User terms and privacy statement apply. Google, Google Play and Google Maps are trademarks of Google LLC. 3 Requires equipped vehicle, active OnStar plan, and Wi-Fi data plan with carrier. OnStar plans and Wi-Fi data plans not available in all countries. See onstararabia.com for equipped vehicles, service availability and system limitations. 4 Requires paid OnStar subscription. Services are subject to user terms and limitations. Remote start requires GM factory-installed and enabled remote start system. Lock/unlock feature requires automatic locks. The Connect Plan does not include emergency or security services. See Plans and Pricing for details. 5 Requires equipped vehicle, active OnStar plan, and Wi-Fi data plan with carrier. OnStar plans and Wi-Fi data plans not available in all countries. See onstararabia.com for equipped vehicles, service availability and system limitations. Wi-Fi services available in UAE and Kuwait only. Due to global Semi-Conductor supply shortages and software issues, GM vehicles may not have some standard features and options. Please check with your local Chevrolet dealer to confirm the vehicle's specifications prior to purchase. Vehicles not equipped with Automatic Stop/Start will be less fuel efficient.



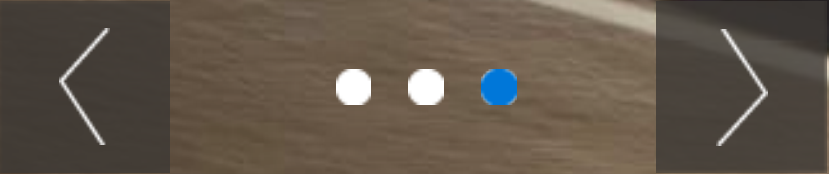
# Models

## LTZ

Available on 2500HD and 3500HD. In addition to standard equipment, LTZ includes:

- Hitch Guidance with Hitch View<sup>1</sup>
- Digital Variable Steering Assist
- Chrome door handles
- LED foglamps
- Vertical trailering mirror, heated and auto-dimming upper glass (driver and passenger), power-adjustable, power-folding and power-extending with lower convex mirrors, integrated turn signal indicators, puddle lamps, perimeter lighting and auxiliary lighting
- Keyless Open and Start
- Power driver seat and exterior mirror memory with twopresets
- HD Rear Vision Camera
- Remote Vehicle Starter System
- Heated 10-way power adjustable driver and front passenger seat
- Heated, leather-wrapped steering wheel
- Theft-deterrent system

Work Truck
LT
LTZ



US specification vehicle pictured, options and feature availability may vary by market. Specifications shown do not come standard on all models. Please refer to the local Dealer for details.

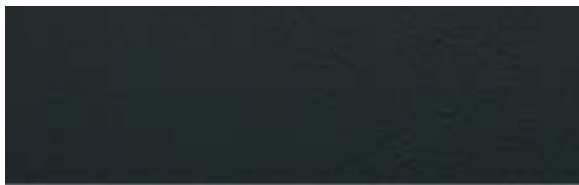
<sup>1</sup> Read the vehicle Owner's Manual for important feature limitations and information.

Due to global Semi-Conductor supply shortages and software issues, GM vehicles may not have some standard features and options. Please check with your local Chevrolet dealer to confirm the vehicle's specifications prior to purchase. Vehicles not equipped with Automatic Stop/Start will be less fuel efficient.

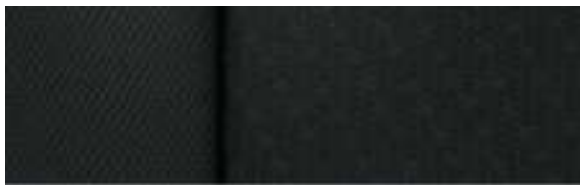


Interior

Work Truck



Jet Black Vinyl (shown)



Jet Black Cloth

LT



Gideon Cloth



Gideon Leather-Appointed Front Seating Surfaces (shown)

LTZ



Jet Black Perforated Leather-Appointed Front Seating Surfaces (shown)



Gideon Perforated Leather-Appointed Front Seating Surfaces



Exterior Colors



IRIDESCENT PEARL TRICOAT<sup>1</sup>



<sup>1</sup> Extra cost.