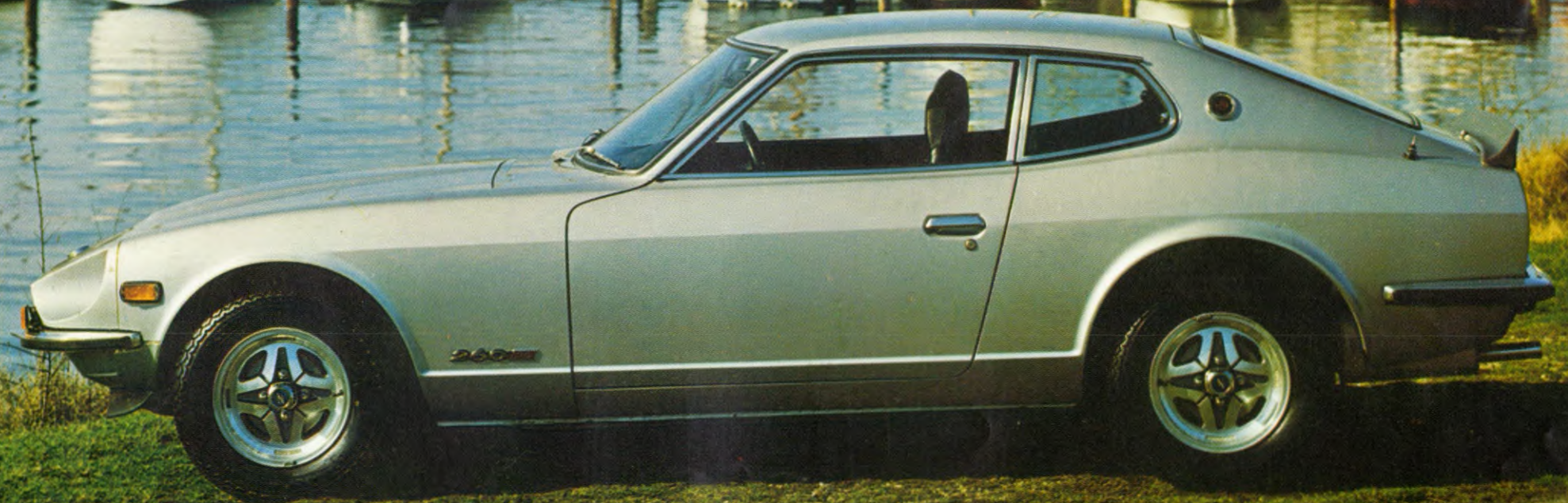


BISHOPS GARAGES  
CIRCUS GARAGE  
21/29 PRESTON ROAD  
BRIGHTON B85 9BS



**DATSUN** 260Z 2+2



# Luxury—in a practical performance car

The Datsun 260Z 2+2 is a high performance GT car with three distinct characters.

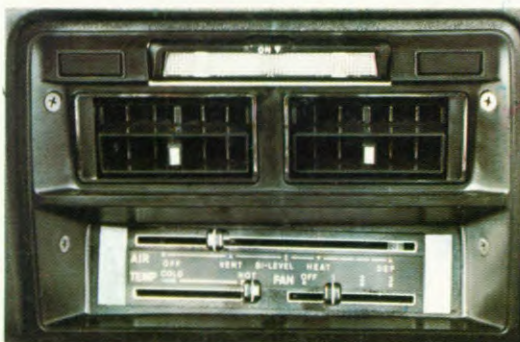
As a driver's car, it is superb — powerful, balanced and a joy to handle; when the mood changes, it will instantly become a four-seater saloon; or you can fold down the rear seat and enjoy the benefit of a large holdall with a sporting pedigree.

The luxurious interior provides comfort and room for four people. Reclining front bucket seats have integral head restraints. Rear seats are individually contoured and deeply sculptured. There's a full 33 ins. headroom for rear seat passengers and, with the front seat in the midway position, an ample 9 ins. of knee room. Despite offering space for the family, the 260Z 2+2 is still very much a driver's car. The 2+2 facility simply enables more people to share the pleasure of 260Z motoring.

When you sit in the 260Z, you know it has been tailored by enthusiasts for the man who enjoys his motoring.

All the controls are planned for easy operation and the instrumentation is comprehensive. The 160 m.p.h. speedometer and 8000 r.p.m. tachometer are directly in front of the driver in glare free housings, while minor instrumentation includes water temperature, oil pressure and fuel gauge, together with ammeter and electric clock. All instruments are sensibly angled towards the driver.

Datsun cars are renowned for their luxury standard equipment. The 2+2 reaches new heights in terms of built-in "extras". Take, for instance, the standard self seeking radio with electric aerial and the eight track stereo system providing the 2+2 owner with the best in-car entertainment. The versatile heating and ventilation system has separate controls for temperature and air distribution and a three speed fan to boost the flow as required. Directional vents in the console and recessed face level sockets complete the system, ensuring comfort for all occupants.



# Sheer performance... in classic style

The classic lines of the 260Z 2+2 instantly reveal its sporting character — the 125 m.p.h. performance further illustrates the point.

The 2+2 is powered by a six cylinder, 7 bearing 2.6 litre engine. Its overhead camshaft, twin carburettor layout provides power and torque for flexible, effortless performance. A close ratio five speed gearbox enables the driver to get the best from the car in any situation.

First, second and third take the 260Z to 46, 71 and 102 m.p.h.; while the fifth gear holds the revs down to 5700 r.p.m. even at maximum speed, and makes 70 m.p.h. a quiet and economical 3150 r.p.m.

Sheer performance is an essential part of the Grand Touring character of the 2+2. But Datsun believe in economy and reliability too. In normal driving, the 260Z can better 25 m.p.g. and because of its modest compression ratio the 260 engine is able to run on low grade three star petrol.

If any further proof of the ruggedness of the 6 cylinder engine was needed, then you only have to look at the racing and rally results throughout the world. From America to Africa the 'Z' has appeared in the winners' circle time and time again.





# The "no compromise" Grand Tourer

The 260Z 2+2 achieves a combination of good looks and practicality which few other cars can match. With Datsun's Grand Tourer you don't have to compromise to enjoy high performance motoring.

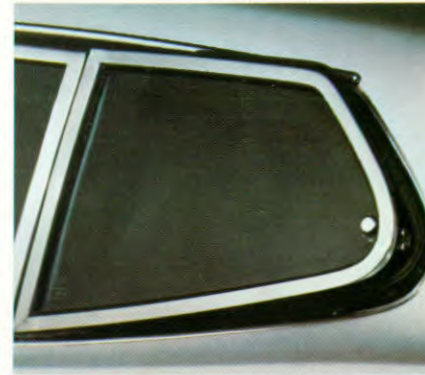
Access to the luggage compartment is via a lift up tailgate, complete with heated rear window, allowing easy loading of large or awkward cases — there are straps for securing them on the fully carpeted platform. When the rear seat is not in use it can be folded flat to increase luggage space.

The spare wheel and tool kit are housed beneath the platform, as is the 14 gallon fuel tank.

You will notice the attention to detail in the 260Z.

The wide opening doors have operating levers for front AND rear passengers, and arm rests with built in door pulls. The glove compartment has an interior courtesy light. A convenient steering column stalk controls lights, three speed wipers, plus wash/wipe, and electric washers. Rear three-quarter windows are hinged for additional ventilation.

If you want the luxury of high performance in a car you can happily live with, experience the 260Z 2+2.





**ENGINE:**  
 Cylinders 6, in line  
 Main bearings 7  
 Bore 83.0mm (3.27in)  
 Stroke 79.0mm (3.11in)  
 Capacity 2565cc (157 cu.in.)  
 Max. power (DIN) 150bhp/5400rpm  
 Max. torque (DIN) 162 lb.ft./4400 rpm  
 Valve gear Single overhead camshaft with duplex chain drive. Finger-type rockers.  
 Lubrication Gear-type pump. Replaceable cartridge filter  
 Carburettors 2 Hitachi HMB46W (SU-type)  
 Fuel pump Nikki mechanical  
**TRANSMISSION**  
 Clutch Single dry plate, diaphragm-spring, 8.86in dia. hydraulic operation  
 Gearbox Five-speed, all-synchromesh, floor change  
 Ratios Top 0.86 2nd 1.90  
 4th 1.0 1st 2.91  
 3rd 1.31 Rev 3.38  
 Final drive Hypoid bevel, ratio 3.70:1

## SPECIFICATIONS

### SUSPENSION

#### Front

MacPherson struts, lower transverse and drag links. Coil springs, telescopic dampers, anti-roll bar

#### Rear

MacPherson struts, triangulated lower link, coil springs, telescopic dampers. Drive shafts with two Hooke-type joints

### STEERING

#### Type

Rack and pinion. Wall-to-wall turning circle 36ft

### BRAKES

#### Type

Discs front; drums rear, split-circuit (tandem-piston master cylinder), vacuum servo, fail-safe pressure-regulating valve in rear brake line

#### Size

Front, 10.67 in. dia.  
 Rear, 9.0 in. dia. x 1.57 in. wide shoes

### WHEELS

#### Type

Light Alloy, 5.5J rims

#### Tyres

Radial-ply, tubeless, 195/70 VR 14

## EQUIPMENT

### Alternator

Hitachi, 60-amp

### Battery

12-volt, 60Ah

### Headlamps

Lucas sealed-beam, total wattage 150/100

### Fuses

12, plus 2 fusible links protecting charging and ignition circuits

## SERVICE CAPACITIES

### Fuel

14.3 gallons (65 litres) 95 octane (RM)

### Coolant

16.5 pints (9.4 litres)

### Sump & filter

7 pints (4 litres)

### Gearbox

3.5 pints (2 litres)

### Final drive

2.2 pints (1.3 litres)

## DIMENSIONS

### Length overall

14ft 7in. (444.5cm)

### Width overall

5ft 5 1/2 in. (165cm)

### Height overall

4ft 3in. (129.5cm)

### Track, front

4ft 5 1/4 in. (135.5cm)

### Track, rear

4ft 5 1/2 in. (136cm)

### Wheelbase

8ft 6 1/2 in. (260.5cm)

### Ground clearance

6 1/4 in. (15.5cm) minimum

### Kerb weight

2668 lbs (1210 Kg.)

**EQUIPMENT:** Your Datsun Dealer will give you full equipment specification

**DATSUN**

UK LIMITED, DATSUN HOUSE · NEW ROAD · WORTHING · BN13 3HD · SUSSEX

Designed & Printed by Datsun at Worthing

Telephone: Worthing (0903) 68561



DATSUN U.K. LIMITED reserves the right to vary any specification with or without notice at any time. Although every effort is made to ensure the accuracy of any specification or description contained in this publication, neither the Company nor the Dealer shall be responsible for any inaccuracy.

This publication does not constitute an offer of sale, and before purchase of any model full consultation with the Dealer should be undertaken.