



DATSUN CHERRY 100A RANGE

Attractive, compact and roomy 4-seaters. Safe, responsive handling from front wheel drive and all independent suspension. Lively performance with excellent economy. Well equipped, comfortable and utterly reliable. Small cars — big advantages. Models: 2 door L, 2 & 4 door saloons, 3 door estate and 2 door coupe.

SPECIFICATION (4 door saloon)

988 c.c. OHV engine. 59 bhp at 6,000 rpm. Four speed all-synchromesh gearbox. All independent suspension, front Macpherson strut, rear trailing arms. Front disc brakes, dual circuits. Rack & pinion steering. Tyres 6 00-12 crossply. Overall length 12ft 0in width 4ft 10in kerb weight 13.3 cwt. max. speed up to 86 mph typical mpg 40.

DATSUN SUNNY 120Y SALOON

Neatly styled saloon using well tried and proven mechanical parts throughout. Accent on reliability and economy. Brisk performance and superb lightness of clutch and gearchange make driving easy and enjoyable. Modern attractive interior. Choice of 2 or 4 doors.

SPECIFICATION

1,171 c.c. OHV engine, 69 bhp at 6,000 rpm. Four speed all-synchromesh gearbox, three-speed automatic option. Independent front suspension. Macpherson struts. Live axle at rear. Front disc brakes, dual circuits. Recirculating ball steering. Tyres 6 00-12 crossply (two-door); 155-12 radial (four-door). Overall length 12ft. 11½in. width 5ft. 4in. kerb weight 15.0 cwt. max. speed up to 91 mph, typical mpg 40.



DATSUNin the U.K.



DATSUN SUNNY 120Y ESTATE

Compact five-door estate version of 120Y saloon. Full width lift-up tailgate gives easy access to load platform which extends to 5 foot in length with rear seat folded down. Modern styling combining safety with good looks. Same well proven engine and transmission as saloon.

SPECIFICATION

1,171 c.c. OHV engine, 69 bhp at 6,000 rpm. Four-speed all-synchromesh gearbox. Independent front suspension, Macpherson struts. Live axle at rear. Front disc brakes, dual circuits. Recirculating-ball steering. Tyres 6 00-12 crossply. Overall length 13ft. 1in., width 5ft. 1in., kerb weight 15.8 cwt. max. speed up to 89 mph, typical mpg 38.

DATSUN SUNNY 120Y COUPE

Stylish 2 door coupe version of 120Y offering a high standard of comfort and equipment still with economy and reliability. Lift-up tailgate gives access to luggage platform which can be extended by folding rear seat. A delightful combination of good looks and practical virtues.

SPECIFICATION

1,171 c.c. OHV engine 69 bhp at 6,000 rpm. Four-speed all-synchromesh gearbox. Independent front suspension, Macpherson struts. Live axle at rear. Front disc brakes, dual circuits. Recirculating-ball steering. Tyres 155-12 radial. Overall length 12ft. 11½in., width 5ft. 1in., kerb weight 15.0 cwt., max. speed up to 91 mph, typical mpg 40.



DATSUN VIOLET 140J SALOON

Medium sized 4 door saloon between 120Y and 160B. Modern safety designed body with well tried engine and transmission parts to ensure reliability. Very well equipped and comfortable. Brisk performance with good economy. Also available, 160J SSS Coupe, high performance sporting cousin to the Violet saloon.

SPECIFICATION

4-cyl. 1,428 c.c. OHC engine, 85 bhp at 6,000 rpm. Four-speed all-synchromesh gearbox. Independent front suspension, Macpherson struts. Live axle at rear. Front disc brakes, servo assisted, dual circuits. Recirculating ball steering. Tyres 165-13 radial. Overall length 13ft. 6in., width 5ft. 2in., kerb weight 18.8 cwt., max. speed up to 95 mph, typical mpg 34.

DATSUN BLUEBIRD 160B/180B SALOONS

Medium-large four-door saloons offering very good performance from modern overhead camshaft engine with excellent economy. Well equipped interior comfortably accommodates 4 adults. Excellent ride and handling from fully independent suspension. Safety designed and very reliable. Also available, Bluebird 180B SSS high performance sporting coupe.

SPECIFICATION

4-cyl. 1,595 c.c. OHC engine, 100 bhp at 6,000 rpm. (180B 1,770 c.c., 105 bhp at 6,000 rpm.). Four-speed all-synchromesh gearbox. All-independent suspension, front Macpherson strut, rear semi-trailing arms. Front disc brakes, servo-assisted, dual circuits. Recirculating-ball steering. Tyres 165-13 radial. Overall length 13ft. 10in., width 5ft. 3in., kerb weight 19.4 cwt., max. speed up to 100 mph (180B up to 104 mph), typical mpg 30.



DATSUN BLUEBIRD 180B ESTATE

Five-door estate car version of the 180B Bluebird. Full width tailgate giving easy access to load platform which can be extended to 5'5" by folding the rear seat. Rear suspension adapted for better load carrying capability. Same comfort and interior refinements as saloon.

SPECIFICATION

4-cyl. 1,770 c.c. OHC engine, 105 bhp at 6,000 rpm. Four-speed all-synchromesh gearbox. Independent front suspension, Macpherson struts. Live axle at rear. Front disc brakes, servo-assisted, dual circuits. Recirculating-ball steering. Tyres 165-13 radial. Overall length 14ft. 0½ in., width 5ft. 3in., kerb weight 21.0 cwt., max. speed up to 102 mph, typical mpg 27.



DATSUN LAUREL 200GL

Large four-door executive saloon with refined and very well equipped interior. Quiet, comfortable and spacious. Offers excellent performance with economy and reliability. One of the most roomy cars in the Datsun range.

SPECIFICATION

4-cyl. 1,990 c.c. OHC engine, 114 bhp at 5,600 rpm. Four-speed all-synchromesh gearbox. Independent front suspension, Macpherson struts. Live axle at rear. Front disc brakes, servo-assisted, dual circuits. Recirculating-ball steering. Tyres 165-14 radial. Overall length 14ft. 9in., width 5ft. 5½ in., kerb weight 22.1 cwt., max. speed up to 103 mph, typical mpg 26.





DATSUN SKYLINE 240KGT

Medium-large 4-door sporting saloon with six-cylinder power and executive equipment. Proven and powerful engine taken from 240Z sports car and tuned for even better economy and reliability. Comfortable four-seater with excellent performance and good handling.

SPECIFICATION

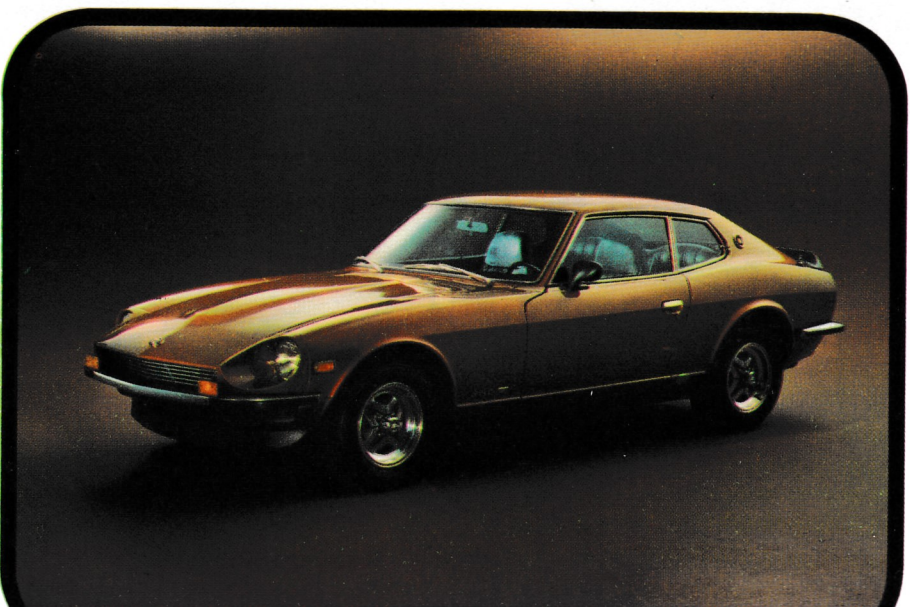
6-cyl. 2,393 c.c. OHC engine. 130 bhp at 5,600 rpm. Four-speed all-synchromesh gearbox with three-speed automatic transmission as optional extra. All-independent suspension, front Macpherson strut, rear semi-trailing arms. Front disc brakes, servo assisted, dual circuits. Variable-ratio recirculating-ball steering. Tyres 175-14 radial. Overall length 14ft. 7½ in., width 5ft. 7½ in., kerb weight 23.0 cwt., max. speed up to 115 mph, typical mpg 25.

DATSUN 260C ESTATE

Newly introduced 5-door estate car version of luxury executive saloon. Seats 7 people with two rear seats which fold flat to give extra large luggage space. Smooth power from 6-cylinder engine gives rapid acceleration still with good economy. Extremely comfortable and very well equipped. Designed for safety and reliability. Also available, 260C saloon.

SPECIFICATION

6-cyl. 2,565 c.c. OHC engine, 140 bhp at 5,200 rpm. Four-speed all-synchromesh gearbox, optional extra three-speed automatic. Independent front suspension, Macpherson struts. Live axle at rear. Front disc brakes, servo assisted, dual circuits. Recirculating-ball steering. Tyres 175-14 radial. Overall length 15ft. 4½ in., width 5ft. 6½ in., kerb weight 27.1 cwt., max. speed up to 105 mph, typical mpg 21.



DATSUN 260Z 2+2 SPORTS

New version of existing 260Z sports car offering seating for 4 persons. Sparkling performance with very good economy from 2.6 litre 6-cylinder engine. Impressive handling and road holding from fully independent suspension and large radial tyres. High standard of comfort and equipment. Safety and reliability built in.

SPECIFICATION

6-cyl. 2,565 c.c. OHC engine. 162 bhp (SAE) at 5,600 rpm. Five speed all-synchromesh gearbox. All independent suspension, Macpherson struts front and rear. Front disc brakes, servo assisted, dual circuits. Rack and pinion steering. Tyres 195/70 VR 14 radial. Overall length 14ft. 7 in., width 5ft. 5½ in., kerb weight 22.8 cwt., max. speed up to 125 mph, typical mpg 25.