

THE DATSUN RANGE



1200 DE LUXE SALOON

Four door, all steel body with separate reclining front seats.

Standard equipment includes: front disc brakes, padded instrument panel, whitewall tyres, windscreen washers, two speed wipers, carpeting throughout, heater and demister, reversing lights, and headlight flasher. Wheel trims as illustrated available at extra cost.

A sturdy, comfortable and high performance "big" car.

SPECIFICATION

Engine	4 cylinder 1,171 c.c. O H V engine with 5 bearing camshaft, with Hitachi twin choke downdraught carburettor, 68 B H P at 6,000 rpm. compression ratio 9:1. Max. torque 70 ft. lbs. at 3,600 rpm.
Transmission	Floor mounted central gear lever. Syncromesh on all four gears. Ratios: 1st: 3.757 2nd: 2.169 3rd: 1.104 4th: 1.000 Rev. 3.610
Overall length	12' 6½"
Front Suspension	Independent strut type with coil springs, tension rods, telescopic shock absorbers and stabiliser.
Rear Suspension	Semi-elliptic leaf springs with shock absorbers.
Performance	93 mph.
Electrical System	12 volts. 40 A H Accumulator and 25 amp. alternator.

THE
INTERNATIONAL
CAR

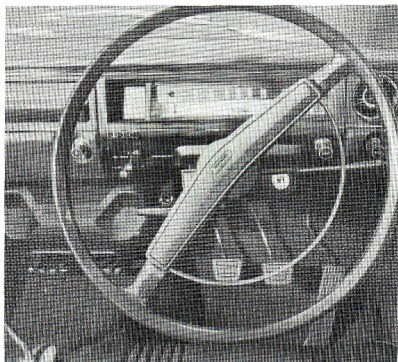


ALSO AVAILABLE IN DELUX COUPE VERSION

1400



DE LUXE SALOON



Four door, Saloon all steel body with tinted safety glass all round, full-flow ventilation, whitewall tyres. Heater, demister, screen washers, reversing lights, steering column lock, headlight flasher, carpeting throughout, and locking petrol cap.

SPECIFICATION

Engine	4 cylinder 1,428 c.c. OHC 77 BHP at 6,000 rpm. 9:1 compression ratio.
Transmission	Floor mounted gear lever, four all synchromesh gears. Ratios: 1st: 3.66 2nd: 2.17 3rd: 1.41 4th: 1.00 Rev. 3.63.
Overall length	13' 6".
Performance	Maximum 93 mph.
Suspension	Front independent strut type with tension rod and stabiliser, rear independent semi-trailing arm with coil springs and telescopic shock absorbers.
Minimum turning circle	31.4 ft.



1600



DE LUXE SALOON



Four door, Saloon all steel body with tinted safety glass all round, full-flow ventilation, fully reclining separate front seats, whitewall tyres. Front disc brakes, heater, demister, screen washers, reversing lights, steering column lock and headlight flasher.

SPECIFICATION

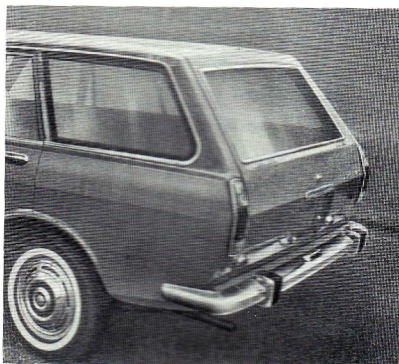
Engine	4 cylinder 1,595 c.c. OHC 96 BHP at 5,600 rpm. 8.5:1 compression ratio.
Transmission	Floor mounted gear lever, four all synchromesh gears. Ratios 1st: 3.38 2nd: 2.01 3rd: 1.31 4th: 1.00 Rev. 3.36.
Overall length	13' 6".
Performance	Maximum 100 mph.
Suspension	Front independent strut type with tension rod and stabiliser, rear independent semi-trailing arm with coil springs and telescopic shock absorbers.
Minimum turning circle 31.4 ft.	
Borg-Warner automatic transmission, available at extra cost.	



1600



DE LUXE ESTATE CAR



Four door, Estate car all steel body. Over 55 cubic feet load space with rear seat folded. Tinted safety glass all round, full-flow ventilation, whitewall tyres. Front disc brakes, heater, demister, screen washers, reversing lights.

SPECIFICATION

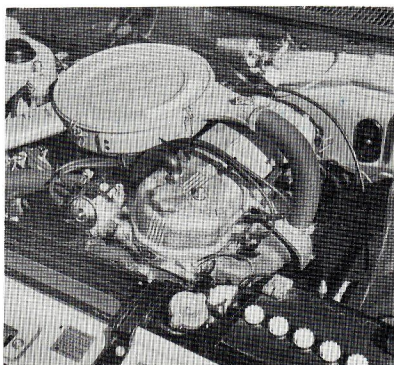
Engine	4 cylinder 1,595 c.c. OHC 96 BHP at 5,600 rpm. 8.5:1 compression ratio.
Transmission	Floor mounted gear lever, synchromesh on all forward gears. Ratios: 1st: 3.38 2nd: 2.01 3rd: 1.31 4th: 1.00
Overall length	13' 6"
Front Suspension	Independent strut type with tension rod and stabilisers.
Rear Suspension	Longitudinal semi-elliptic leaf springs with telescopic double acting shock absorbers.
Turning Circle	31.4ft.
Performance	100 mph.
Brakes	Hydraulic disc front. 9" drums rear.



1800



DE LUXE SALOON



Luxury four door Saloon all steel body.

Fully reclining individual seats form a bed. Overrides, whitewall tyres, carpets, safety locks, reversing lights, heater, demister, screen washers, cigarette lighter etc.

SPECIFICATION

Engine	4 cylinder 1,815 c.c. OHC. 105 BHP at 5,600 rpm. 8.3:1 compression ratio.
Transmission	4 speed all synchromesh with floor gear change. Ratios: 1st: 3.382 2nd: 2.013 3rd: 1.312 4th: 1.000 Rev. 3.355.
Performance	Maximum 103 mph.
Suspension	Independent all round with tension bar and telescopic shock absorbers. Rack and pinion steering.

All rights reserved to change specification without notice.



2000



DE LUXE ESTATE CAR



Four door, six-seater, all steel body. Bench front seat. De Luxe radio with electrically-operated aerial.

1,973 c.c. six cylinder OHV engine producing 109 BHP at 5,200 rpm.

A load capacity of over 1100 lbs. with three passengers plus electrically-operated remote control rear side window, operated either from the driver's seat or from outside to facilitate easy loading, heater, demister, screen washers, etc.

SPECIFICATION

Engine	Six cylinder, 1,973 c.c. OHV 109 RHP at 5,200 rpm.
Transmission	4 speed, all synchromesh, with steering column gear change. Ratios: 1st: 3.549 2nd: 2.197 3rd: 1.420 4th: 1.0 Rev. 3.164.
Performance	Maximum 90 mph.
Suspension	Independent coil springs at front with tension bar. Longitudinal semi-elliptic rear springs and shock absorbers.

Nissan-Datsun (U.K. Concessionaires) Ltd.
Harbour Way - Shoreham-by-Sea - Sussex - BN4 5HX
Telephone: Shoreham-by-Sea 4410/4419/4624. Telex: 87445.

