

**C2 CACHET
STYLE AND SUBSTANCE.**

The eye-catching 3-door Citroën C2 Cachet is fitted with an impressive range of equipment including air conditioning and a choice of 1.1i or 1.4i petrol engines. This is an urban-sports car that's audaciously stylish and enjoyable to drive. Available in Arctic Steel (Metallic), Manitoba Grey (Metallic), Black, and Sport Red.



**C3 CACHET
A THING OF BEAUTY.**

The Citroën C3 Cachet is the epitome of chic. It's more than just a pretty face though. With its curved roof, flowing lines, spacious 5-door design and a choice of two petrol engines or a 1.4HDi diesel. Available in Arctic Steel (Metallic), Thorium Grey (Metallic), Manitoba Grey (Metallic), Wicked Red (Pearlescent), Tuscan Blue (Pearlescent) and Polar White.



**C4 CACHET
RAISE THE STAKES.**

The spacious Citroën C4 Cachet is made to turn heads, with a fixed panoramic sunroof, 17" alloy wheels, air conditioning and impressively balanced proportions. Choose between the 1100cc 1.6i petrol or the advanced and highly economical 1.6HDi diesel, which also includes a new six-speed EGS gearbox. Available in Arctic Steel (Metallic), Thorium Grey (Metallic), Wicked Red (Pearlescent), Black (Pearlescent) and Admiral Blue.



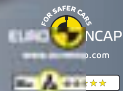
**CITROËN
C2 | C3 | C4
CACHET
SPECIAL EDITIONS**

**ADDED KUDOS. CITROËNS
HAVE ALWAYS BEEN RENOWNED
FOR THEIR OUTSTANDING
VALUE, COMFORT AND SAFETY
CREDENTIALS...**

So imagine a range that goes one step further, adding even more contemporary, stylish and innovative features, from air conditioning to alloy wheels. This is a car range with prestige... this is the new Citroën Cachet Special Edition Range.

CACHET

C2 | C3 | C4 CACHET SPECIAL EDITIONS



EQUIPMENT SPECIFICATION

SAFETY & SECURITY

	C2 CACHET	C3 CACHET	C4 CACHET
ABS with Electronic Brakeforce Distribution (EBD)	•	•	•
Emergency Braking Assistance (EBA)	•	•	•
Driver's and front passenger's airbags	•	•	•
Front lateral airbags	•	•	•
High frequency remote control central locking	•	•	•

STYLE

EXTERIOR			
Alloy wheels - set of four	15" (1.4i only)	15"	17"
Body colour painted bumpers and side rubbing strips	•	•	
INTERIOR			
Mistral 'Anjou' cloth	•		
Grey 'Ecla' cloth		•	
Grey 'Castelno' cloth			•

LIGHTING & VISIBILITY

Front fog lights		•	•
Fixed panoramic sunroof			•

COMFORT & CONVENIENCE

Air conditioning	•	•	•
Variable power assisted steering	•	•	•
Height-adjustable driver's seat	•	•	•
Height-adjustable steering wheel	•	•	•
Front electric windows	•	•	•
Electronically adjustable door mirrors	•	•	•
Cruise control with speed limiter			•

IN-CAR ENTERTAINMENT

RDS stereo radio/MP3 compatible CD player with steering mounted controls	•	•	•
--	---	---	---

OPTIONS

Black paint	○		
Metallic/pearlescent paint	○	○	○

TECHNICAL SPECIFICATION*

ENGINE	1.1i 8V (61hp)	1.4i 8V (75hp)	1.4i 8V (75hp)	1.4i 16V (90hp)	1.4HDi 8V (70hp)	1.6i 16V (110hp)	1.6HDi 16V (92hp)	1.6HDi 16V (110hp) DPFS† EGS††
Capacity (cc)	1124	1360	1360	1360	1398	1587	1560	1560
Cylinders	4 in line		4 in line			4 in line		
Max power DIN (hp/rpm)	61/5500	75/5400	75/5400	88/5250	70/4000	110/5800	92/4000	110/4000
Max torque DIN (lb.ft/rpm)	69/3300	87/3300	87/3300	98/3250	118/2000	108/4000	159/1750	177/1750
Fuel system	Multi-point electronic fuel injection		Multi-point electronic fuel injection		High pressure direct diesel injection	Muti-point electronic fuel injection	High pressure direct diesel injection	
TRANSMISSION								
Five speed manual	•	•	•	•	•	•	•	
Six speed manual								•
PERFORMANCE	(All figures driver alone)							
Max speed (mph)	98	105	104	112	101	121	112	119
0 – 62mph (sec)	14.4	12.2	12.4	11.9	13.4	10.6	12.5	11.2
ECONOMY								
Litres/100km (mpg)	(Official Government test fuel consumption figures)							
Urban cycle	7.5 (37.7)	7.9 (35.8)	8.2 (34.4)	8.1 (34.8)	5.3 (53.3)	9.5 (29.7)	5.8 (48.7)	5.8 (48.7)
Extra urban	4.8 (58.9)	4.9 (57.6)	4.9 (57.6)	5.0 (56.5)	3.8 (74.3)	5.7 (49.6)	3.8 (74.3)	3.8 (74.3)
Combined	5.8 (48.7)	6.0 (47.0)	6.1 (46.3)	6.2 (45.6)	4.4 (64.2)	7.1 (39.8)	4.5 (62.8)	4.5 (62.8)
CO ₂ EMISSIONS (g/km)	138	143	145	148	115	169	120	120
STEERING								
Number of turns lock to lock	3.2		3.25			2.88		
Turning circle between kerbs (m)	9.6		10.7			10.7		
VOLUME/DIMENSIONS								
Fuel tank capacity litres (gallons)	41 (9)		47 (10.3)			60 (13)		
Boot volume - seats up below parcel shelf (litres VDA)	193		282			320		

- Standard equipment
- Optional factory fitted equipment

- † Diesel Particulate Filter System
- †† Electronic Gearbox System

* For further information please refer to the C2, C3 and C4 Product Information Brochures.



Citroën UK Ltd. 221 Bath Road, Slough SL1 4BA.
Freephone: 0800 262 262

CITROËN CITROËN prefers TOTAL



This brochure is made from paper from a sustainable and well-managed forest. Citroën support responsible use of forest resources.

Please don't throw me away, give me to a friend or recycle me.

NOTE: Colours and pictures shown in this brochure are for illustration purposes only. Please consult your Dealer for definitive colour and trim/upholstery details. Every endeavour has been made to ensure that the information and details contained in this leaflet were accurate at the time of going to press July 2008. However the company reserves the right, whilst preserving the essential characteristics of the models described, to introduce at any time modifications, changes of details, equipment or accessories. Every effort will be made to bring this leaflet up to date, but in order to avoid any misunderstandings please consult your Dealer. Euro NCAP dates assessed: C2 November 2003, C3 November 2002, C4 Hatchback November 2004. For details of Citroën Care for Car and Driver, please see the full manufacturer's price list. The Citroën Website contains full information on all Citroën products and offers available in the UK, together with details of our environmental and recycling policies. The site address is: www.citroen.co.uk

KTI101 DESIGNED AND PRODUCED BY PEXTON SEARLE 01923 244241