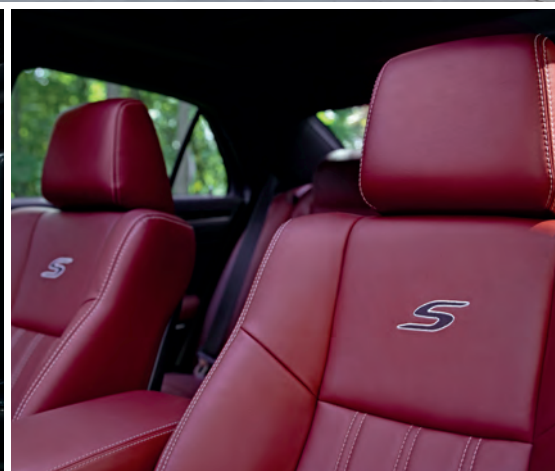


Chrysler 300



Catalogue Contents

- 3 Highlights
- 4 Comfort & Convenience
- 5 Infotainment
- 6 Connected Services
- 7 Driver Information Display
- 8 Technology
- 9 Engines
- 10 Transmission
- 11 All-Wheel-Drive System
- 12 300S Features
- 14 Safety & Security
- 15 Features & Options
- 17 Exterior Colours / Wheels
- 18 Interior Colours
- 19 Specifications





BOLD GRILLE DESIGNS



300S IN VELVET RED PEARL



STANDARD 8.4-INCH
UCONNECT® TOUCHSCREEN

Apple CarPlay shown on touchscreen.

Make Every Day a Red-Carpet Day.



▶ 300S with S Model Appearance Package shown in Velvet Red Pearl

BIG ON PERSONALITY.

The iconic and sophisticated Chrysler 300 characterizes bold luxury and strapping performance from every angle. The authoritative stance is accented by distinctive grilles, wheels and jewelled LED lighting — while premium leather-faced interiors and advanced technologies offer an immersive luxury experience. The smooth and dynamic ride and handling are enhanced by the automatic All-Wheel Drive (AWD) with front-axle disconnect (available on all V6 models), along with

Canada's Best-Selling Engine,^{1*} the standard 3.6L Pentastar™ Variable Valve Timing (VVT) V6, and TorqueFlite® 8-speed automatic transmission. Additionally, the available 5.7L HEMI® VVT V8 offers impressive power, with the efficiency of a smaller engine, thanks to its FuelSaver Multi-Displacement System (MDS) Technology.

*All disclaimers and disclosures can be found on the last page.



Best-in-Class Interior Space.²

COMFORT WORTH SHARING.

The roomy and functional Chrysler 300 interior makes for a ride that's both luxurious and family-friendly, with Best-in-Class passenger volume² and seating for five. You'll enjoy comfort in any climate thanks to the available heated and ventilated leather-faced front seats and heated steering wheel. Rear-seat occupants will enjoy amenities like climate control outlets and available heated seats, as well as access to USB ports.

THE LUXURY OF CONVENIENCE.

The available Remote Start System allows the driver's heated seat and the heated steering wheel to automatically activate based on outdoor temperature. Driver conveniences, like standard Keyless Enter 'n Go™ with proximity entry and push-button start and the smooth, automatic gear selection of the Class-Exclusive electronic Rotary E-shift,² are nearly effortless to use.

In Touch Wherever You Go.

Uconnect®

Uconnect® IS YOUR COMMUNICATION CENTRE.

Stay entertained and connected while focused on the road with the expansive 8.4-inch touchscreen Media Hub. The standard Uconnect 4C multimedia centre displays climate and multimedia controls along with radio settings, allowing you to use voice commands to select media stations and available navigation.³ The standard Drag-and-Drop Menu Bar allows you to keep your favourite Uconnect services accessible on the main screen.

Uconnect PHONE – HANDS-FREE⁴ COMMUNICATION.

Stay connected safely when you pair a Bluetooth® phone with the Uconnect system's voice recognition to send and receive hands-free calls, as well as listen and respond to text messages and record voice memos. Siri Eyes Free⁵ allows you to make voice commands with your iPhone 4s or later, and Do Not Disturb can route incoming calls to voice mail and suppress text messages or send automated replies, keeping your hands on the wheel and your eyes on the road.⁴



A smarter, safer way to use an iPhone inside your vehicle and seamlessly integrates it with the Uconnect touchscreen and Siri voice control.⁵ The compatibility allows you to make calls, access music, send and receive messages, get directions optimized for traffic conditions, and more while staying focused on the road.⁶



Designed with your personal safety and convenience in mind, Android Auto™ gives you the right information for the road ahead. Easily access your favourite music with YouTube Music, and get where you need to go with Google Maps. Talk to Google on Android Auto and get things done with your voice so you can keep your focus on driving.⁶ Easily send messages, get directions, control media and more. Just say, "Hey Google" to get started.

Your Connected Services Suite.

Use the available SiriusXM Guardian⁷ services to conveniently command your vehicle using your voice with the Chrysler Skill⁸ for Amazon Alexa on an Alexa-enabled device from the comfort of your home! Just ask Alexa to start/stop the engine, lock/unlock the doors, check fuel status and tire pressure, and more. With available Uconnect[®] Navigation,³ you can also ask Alexa to find a business and send the address directly to your vehicle.

SIRIUSXM GUARDIAN⁷ THROUGH YOUR UCONNECT PHONE APP.

- Remote start your engine or cancel remote start
- Lock or unlock your vehicle doors
- Use Vehicle Finder⁹
- Activate the horns and lights remotely
- Check tire pressure, fuel level or oil life
- Send destinations to your vehicle's navigation³ system



This advanced in-vehicle connectivity offers a Wi-Fi¹⁰ Hotspot and help when you need it most with Roadside Assistance Call¹¹ and SOS Call¹² from your touchscreen or rearview mirror button. The available mobile app helps to keep you connected by turning your phone into your vehicle's command centre. The one-year subscription includes Remote Vehicle Start to start your car and unlock the doors from virtually anywhere through the Uconnect App, as well as Stolen Vehicle Assistance alerts,¹³ Send & Go¹⁴ and much more.

Listen to your favourite channel from your connected device, then flip to SiriusXM¹⁵ in your car and enjoy the best ad-free music, plus every major sport and the biggest names in entertainment, news and comedy. You'll get over 140 channels, all at the press of a button. With the SiriusXM All Access¹⁵ package, you get every channel available on your satellite radio, and you can also listen at home or on the go with your connected devices and the SiriusXM App,¹⁵ which is included with your one-year trial. Available.



Access useful information when you need it, right at your fingertips. Get detailed weather maps, five-day forecasts and severe weather alerts, as well as sports scores and in-game weekly schedules for your favourite teams, information on fuel prices in your area and more. Your first five years of SiriusXM Travel Link¹⁶ service are included. Available.



Avoid congestion before you reach it. Get continuous updates on traffic speed, accidents, construction, road closures and more before you begin your travels. You will get to your destination faster and more easily than ever before. Your first five years of SiriusXM Traffic Plus¹⁶ service are included. Available.

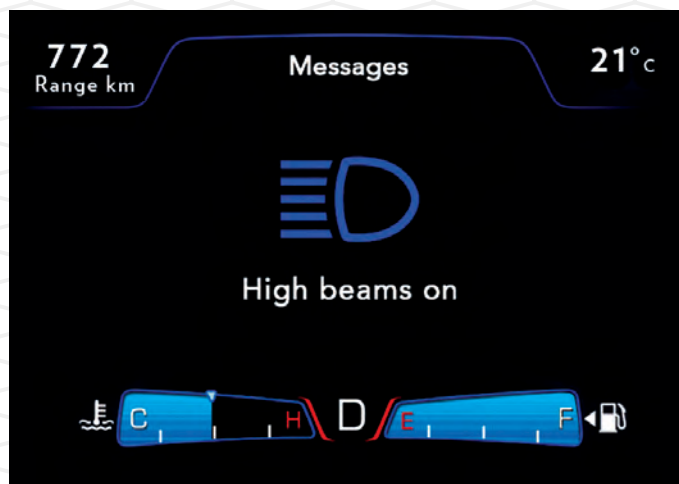
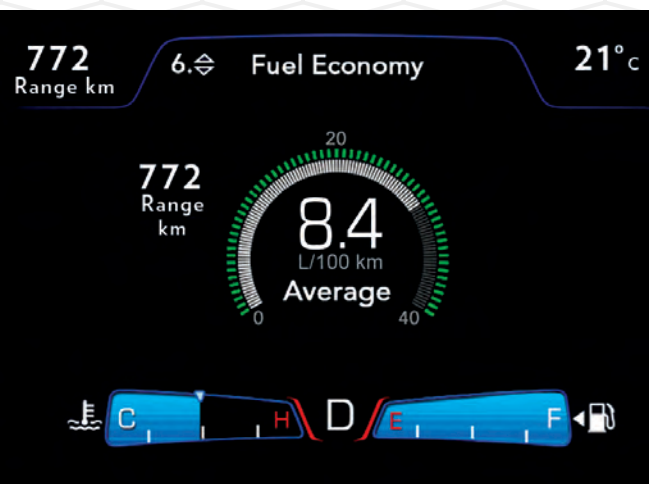


Position of Authority.

STEERING-WHEEL CONTROLS.

Centrally located control buttons on the steering wheel provide ease of operation for the standard 8.4-inch Uconnect® touchscreen, as well as the audio, voice and speed controls. The cruise settings include the available Adaptive Cruise Control (ACC) with Stop,¹⁷ which allows you to select one of four distance increments for following behind other vehicles. The Electric Power Steering on 300S models provides three available driver-selectable steering modes — Normal, Comfort and Sport — allowing for more responsive steering for spirited driving while maintaining ease at low speeds and when parking.

Command Centre.



7-INCH FULL-COLOUR CUSTOMIZABLE IN-CLUSTER DISPLAY.

The full-colour Driver Information Display (DID) in the instrument cluster, with configurable graphics, is seamlessly integrated with cluster analogue instruments. The distinctive blue-ambient display allows for a wide range of settings, including audio, speed, compass, temperature, fuel economy, trip, cruise control, vehicle status and engine performance, all adding up to over 7,000 available driver configurations.



Surround Sound.

DIAL UP THE ACOUSTICS.

The nine Alpine® premium speakers, available on 300 Touring-L and 300S, give a powerful and perfectly tuned audio experience. The nine-speaker multichannel Surround Sound includes a trunk-mounted subwoofer and a 506-watt amplifier.



► Uconnect® 4C NAV³ Multimedia Centre with 8.4-inch touchscreen

Always Online.

Uconnect 4G LTE Wi-Fi¹⁰

Makes securing the perfect location to get online simple with a built-in hotspot that connects to your personal Wi-Fi account. With a trusted nationwide network, you're always connected for up to eight devices — within 15 metres (50 feet) of your vehicle.

ONE-STEP NAVIGATION³

Take the best route right now. Uconnect employs GPS navigation for audible turn-by-turn directions, and detailed 3D maps help to ensure you arrive on time. Use Voice Command and say the complete address to get directions quickly. Available.

Impressive V6 Fuel Economy: 7.8 L/100 km (36 mpg) hwy.



CANADA'S BEST-SELLING ENGINE — 3.6L PENTASTAR.™¹

The standard 3.6L Pentastar Variable Valve Timing (VVT) V6 yields a fuel efficiency rating of 7.8 L/100 km (36 mpg) highway while producing a robust 292 hp and 260 lb-ft of torque (300 hp and 264 lb-ft on 300S). All-Wheel-Drive (AWD) models benefit from an active transfer case with front-axle disconnect to achieve a fuel efficiency rating of 8.7 L/100 km (32 mpg) highway.¹⁸ The system seamlessly transfers from Rear-Wheel Drive (RWD) to AWD as needed, returning to RWD when driving conditions warrant to maximize fuel economy.

LEGENDARY 5.7L HEMI® VVT V8 WITH FUELSAVER TECHNOLOGY.

The available 5.7L HEMI VVT V8, with FuelSaver Multi-Displacement System (MDS) Technology, delivers an impressive combination of V8 horsepower and a remarkable fuel efficiency rating of 9.4 L/100 km (30 mpg) highway.¹⁸ The engine is optimized by the TorqueFlite® 8-speed automatic transmission. FuelSaver MDS seamlessly alternates between four-cylinder mode — when less power is needed — and all eight cylinders when required. The result with all eight cylinders activated is acceleration that meets your demands with 363 hp and 394 lb-ft of torque.

Mission-Focused.



TORQUEFLITE® 8-SPEED AUTOMATIC TRANSMISSION.

The standard TorqueFlite 8-speed automatic transmission provides world-class shift quality, outstanding fuel efficiency and commanding performance thanks to a wide gear-ratio spread. A low first gear ensures quick takeoff, while close fifth- through eighth-gear ratios deliver smooth shifting and a lower cruising rpm for refined performance and optimal fuel efficiency.

TURN UP THE SPORT EFFECTS.

Sport mode amplifies the ride and handling experience on 300S models by selecting the S gear on the Rotary E-shift dial. It enables more aggressive engine and transmission response, increased accelerator-pedal engagement, manual shifting controlled by the steering-wheel-mounted paddle shifters, and Sport-tuned Electric Power Steering (EPS) for enhanced handling. Sport mode can also be activated by the Sport button on the centre stack.



All-Wheel Drive (AWD) for All-Weather Driving.

YOUR STAGE TO FORGE.

Available on all 3.6L V6 engine models, the AWD system automatically engages based on driving conditions. It activates when wheel-slip is detected, wipers are activated, Sport mode is engaged or the steering-wheel-mounted paddle shifters are activated. This advanced AWD system also activates when the outside temperature dips below approximately 4°C (40°F) or when road slope significantly changes. The system's design provides a seamless transition between RWD and AWD, resulting in optimum all-weather performance while delivering impressive fuel economy.

ULTIMATE AWD TRACTION.

The fully automatic AWD performance system optimizes wheel traction on sharp road inclines and declines, and under challenging road-surface conditions, such as wet pavement. The system also engages when the driver turns off the Electronic Stability Control (ESC)¹⁹ system. In cases of inclement weather, AWD is tuned to help minimize oversteer and maximize traction where snow, ice, mud, sand or gravel is present.

► Touring-L AWD with Sport Appearance Package shown in Gloss Black and Touring-L AWD with Sport Appearance Package shown in Silver Mist

300S

Amplifies the Sport of Driving.



DESIGNED TO ILLUMINATE.

The 300S adds unique Black bezels to the headlamps and taillamps, along with LED fog lamps and a Gloss Black daylight opening surround moulding, presenting an illuminated attitude. The available High Intensity Discharge headlamps and Auto High-Beam Headlamp Control automatically adjust to optimize the driver's view of the road ahead.

PERFORMANCE APPEARANCE.

The unequivocal 300S exterior demeanour displays a Black Chrome surround with the Gloss Black "S" grille, a Black Chrome lower front-fascia accent strip and available 20-inch Black Noise aluminum wheels — making a dynamic performance and style statement about the vehicle and driver before they've even stepped out.

A PERFECT MATCH.

Equipping the 300S with the forceful 5.7L HEMI® Variable Valve Timing V8 engine mated to the S Model Appearance Package — also available on V6 models — including body-colour rear spoiler and fascia accents, sculpted side sills, lower grille close-out panels and premium LED fog lamps, boosts the road-hugging style.

Cue the S Factor.

Make a bold and distinctive statement on 300S with the standard Black Noise and Red-accented exterior badging, including Red insert on the Chrysler wing badge and new 20-inch Black Noise aluminum wheels. Opt for a vivid interior with Radar Red Nappa leather-faced Sport bucket seats to bypass basic on a daily basis.



SWITCH IT TO SPORT MODE.

Black or Black/Smoke two-tone Nappa leather-faced performance seats contrasted with Light Diesel stitching are the marque of the 300S interior style. The leather-wrapped steering wheel with paddle shifters and accent stitching further display this model's performance attributes as inspired drivers turn to Sport mode and turn up the dynamic driving experience.

80+

Standard and Available Safety & Security Features.

The Chrysler 300 offers a host of automatically reactive safety and security features to enhance your control and visibility even on the busiest of roads, lots and driveways.



PARK-SENSE® FRONT AND REAR PARK ASSIST!¹⁷

When driving at low speeds, the available Park-Sense Front and Rear Park Assist uses ultrasonic sensors in the front and rear of the vehicle to detect stationary objects in front of and behind the vehicle. The system alerts you with an audible chime and visual icon in the instrument panel if your vehicle approaches another object too closely.

ADAPTIVE CRUISE CONTROL (ACC) WITH STOP!¹⁷

Utilizing radar and video sensors, this available feature identifies vehicles in the forward path and maintains a safe, driver-selectable distance. Under certain traffic conditions, ACC with Stop has the ability to bring the vehicle to a full stop without driver intervention. After bringing the vehicle to a stop, the system will hold the brakes for two seconds before releasing, which requires the driver to take control and manually apply the brakes if a longer stop is required.



BLIND-SPOT MONITORING (BSM) WITH REAR CROSS-PATH DETECTION!¹⁷

Continually monitoring the vehicle's side blind spots using radar sensors when driving forward, the available BSM system alerts you of detected objects. An indicator illuminates in the appropriate sideview mirror, and if the turn signal is activated, an audible notification sounds. When you drive in Reverse, Rear Cross-Path Detection¹⁷ automatically monitors for objects and vehicles perpendicular to the vehicle — ideal when backing out of tight parking spaces.

LANE DEPARTURE WARNING (LDW) WITH LANE KEEP ASSIST!¹⁷

With a forward-facing camera mounted inside the rearview mirror, this available system can gauge the vehicle's position and movement between the road lines. If the LDW system detects the vehicle drifting out of its lane without turn-signal activation, the driver is warned through a slight nudge in the steering wheel. If the drift is not manually corrected, the Electric Power Steering system can realign the vehicle to its correct lane position.



FORWARD COLLISION WARNING WITH ACTIVE BRAKING!¹⁷

Using radar and camera technology, this available system alerts you when your vehicle gets too close to a preceding vehicle. If you don't react, the system can automatically activate your brakes, slowing and stopping your vehicle to help prevent a collision.

ELECTRONIC STABILITY CONTROL (ESC)!¹⁹

In adverse conditions, ESC and Brake Assist work with an All-Speed Traction Control System to help maintain vehicle stability, limit oversteer or understeer, and selectively apply brake force when needed.





TOURING

POWERTRAIN

- 3.6L Pentastar™ Variable Valve Timing (VVT) V6 with TorqueFlite® 8-speed automatic transmission
- Rear-Wheel Drive (RWD)
- All-Wheel Drive (AWD) (includes 19-inch wheels) — Available

SELECT STANDARD EQUIPMENT

INTERIOR AMENITIES

- 7-inch full-colour customizable in-cluster display centre
- 12-volt centre console power outlet
- Acoustic windshield and front-door glass
- Air conditioning with Dual-Zone Automatic Temperature Control, air filtering and humidity sensor
- Analogue clock
- Auto-dimming rearview mirror
- Charcoal wood hydrographic pattern interior trim bezels
- Dual remote USB ports for charging
- Full-length floor console with illuminated front cup holders
- Illuminated rear assist handles
- Leather-wrapped steering wheel with mounted audio and cruise controls
- Media Centre:
 - 4G LTE Wi-Fi¹⁰ Hotspot-capable
 - Apple CarPlay⁶
 - Android Auto^{TM6}
 - Hands-free⁴ communication with Bluetooth® streaming audio
 - Media Hub, including 2 USB ports and auxiliary audio input jack
 - SiriusXM Guardian including 1-year subscription⁷
 - SiriusXM including 1-year subscription¹⁵
 - Uconnect® 4C multimedia centre with 8.4-inch touchscreen and 6 speakers
- Power windows, front 1-touch up-and-down
- Rear-seat armrest with cup holder
- Rotary E-shift
- Seating:
 - Power 12-way driver's seat, including 4-way lumbar adjust
 - Premium cloth high-back front bucket seats with 60/40 split-folding rear seat
- Sun visors with illuminated vanity mirrors
- Tilt/telescoping steering column

EXTERIOR FEATURES

- 300 badge
- Automatic bi-functional halogen projector headlamps with Chrome surrounds
- Black grille with bright surround
- Body-colour door handles
- Body-colour, power, heated mirrors, manual-folding
- Body-colour shark-fin antenna
- Chrome-accented LED taillamps
- Dual bright exhaust tips
- Wheels and tires:
 - 17-inch Fine Silver aluminum wheels
 - P215/65R17 low-rolling-resistance tires

SAFETY & SECURITY

- 4-wheel antilock disc brakes with Brake Assist, Rain Brake Support and Ready Alert Braking
- 7 air bags²⁰
- Compact spare tire
- Electric Power Steering
- Electronic Stability Control (ESC)¹⁹ with Hill Start Assist, Electronic Roll Mitigation, Trailer Sway Control and All-Speed Traction Control
- Keyless Enter 'n GoTM with proximity entry and push-button start
- ParkView® Rear Back-Up Camera¹⁷
- Rain-sensing windshield wipers
- Reactive front head restraints²¹
- Security alarm²²
- Sentry Key® anti-theft engine immobilizer
- Tire Pressure Monitoring Display

OPTIONAL EQUIPMENT

- Chrome Appearance Package (RWD)
- Driver Convenience Group
- Mopar® Interior Protection Group
- Sport Appearance Package
- Uconnect 4C NAV³ Multimedia Centre with 8.4-inch Touchscreen



TOURING-L

POWERTRAIN

- 3.6L Pentastar™ Variable Valve Timing (VVT) V6 with TorqueFlite® 8-speed automatic transmission
- Rear-Wheel Drive (RWD)
- All-Wheel Drive (AWD) (includes 19-inch wheels) — Available

ENHANCEMENTS vs. 300 TOURING

- Blind-Spot Monitoring with Rear Cross-Path Detection¹⁷
- Body-colour exterior mirrors with supplemental signals, courtesy lamps and driver's-side auto-dimming
- Comfort suspension
- LED fog lamps
- Park-Sense® Front and Rear Park Assist¹⁷
- Remote Start System
- Seating:
 - Nappa leather-faced heated front bucket seats with 60/40 split-folding rear seat
 - Power 12-way driver and front-passenger seats, including 4-way lumbar adjust
- Universal garage door opener²³
- Wheels and tires:
 - 18-inch polished aluminum wheels
 - P225/60R18 BSW Touring tires

OPTIONAL EQUIPMENT

- Chrome Appearance Package (RWD)
- Comfort Group
- Mopar® Interior Protection Group
- Popular Equipment Group
- SafetyTec™ Plus Group
- Sport Appearance Package



300S

POWERTRAIN

- 3.6L Pentastar VVT V6 with TorqueFlite 8-speed automatic transmission
- 5.7L HEMI® VVT V8 with FuelSaver Multi-Displacement System (MDS) Technology and TorqueFlite 8-speed automatic transmission — Available (includes S Model Appearance Package content)
- RWD
- AWD (V6 only; includes 19-inch wheels) — Available

ENHANCEMENTS vs. 300 TOURING

- 6 premium speakers with 276-watt amplifier
- 180-amp alternator
- 300-hp rating (3.6L V6)
- Black and Satin Chrome interior accents with Piano Black bezels
- Black grille with Black Chrome surround
- Black-accented headlamps and LED taillamps
- Blind-Spot Monitoring with Rear Cross-Path Detection¹⁷
- Body-colour exterior mirrors with supplemental signals, courtesy lamps and driver's-side auto-dimming
- Front LED fog lamps
- Gloss Black daylight opening surround moulding
- Gloss Black front fascia appliqué

- Nickel-finish analogue clock
- Park-Sense Front and Rear Park Assist¹⁷
- Performance suspension
- Red S exterior badging including Black Noise Chrysler wing badge with Red insert and Black Noise 300 badge with Red S
- Remote Start System
- Seating:
 - Nappa leather-faced heated front Sport bucket seats
 - Power 12-way driver and front-passenger seats including 4-way lumbar adjust
- Sport mode
- Steering-wheel-mounted paddle shifters
- Universal garage door opener²³
- Wheels and tires:
 - 20-inch Black Noise aluminum wheels
 - 245/45R20 BSW all-season performance tires

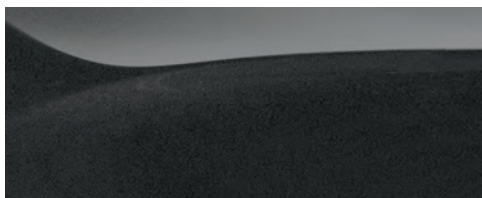
OPTIONAL EQUIPMENT

- Black and Radar Red Interior
- Comfort Group
- Mopar Interior Protection Group
- Popular Equipment Group
- S Model Appearance Package
- SafetyTec Plus Group

EXTERIOR COLOURS



Bright White



Granite Crystal Metallic



Silver Mist



Gloss Black



Canyon Sunset



Ocean Blue Metallic



Amethyst



Frostbite



Velvet Red Pearl

WHEELS



17-inch Fine Silver aluminum
Standard on 300 Touring RWD
(WF6)



18-inch polished aluminum
Standard on 300 Touring-L RWD;
Available on 300 Touring RWD with
Driver Convenience Group
(WPC)



19-inch polished aluminum
Standard on 300 Touring AWD
and 300 Touring-L AWD
(WPY)



19-inch Black Noise aluminum
Standard on 300S AWD; Available on
300 Touring AWD and 300 Touring-L
AWD with Sport Appearance Package
(WAK)

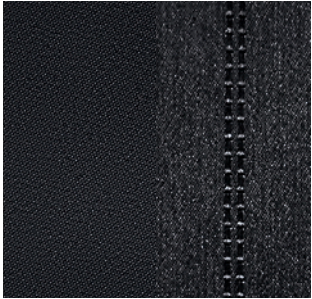


20-inch polished aluminum
Available on 300 Touring RWD
and 300 Touring-L RWD with
Chrome Appearance Package
(WFY)

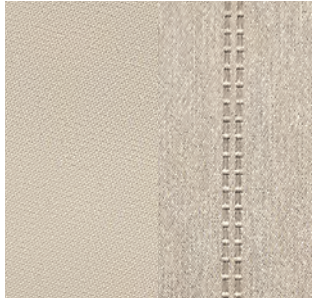


20-inch Black Noise aluminum
Standard on 300S RWD; Available on
300 Touring RWD and 300 Touring-L
RWD with Sport Appearance Package
(WHG)

INTERIOR COLOURS



Premium cloth — Black
Standard on 300 Touring



Premium cloth — Linen
Standard on 300 Touring



Nappa leather-faced — Black
Standard on 300 Touring-L



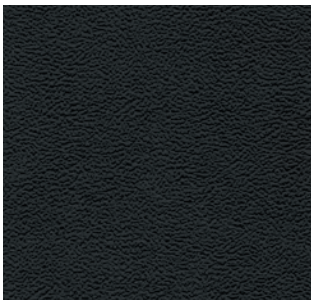
Nappa leather-faced — Linen
Standard on 300 Touring-L



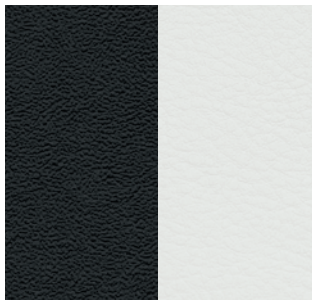
Nappa leather-faced with
perforated inserts — Black
Available on 300 Touring-L
with Comfort Group



Nappa leather-faced with
perforated inserts — Linen
Available on 300 Touring-L
with Comfort Group



Nappa leather-faced — Black with
Light Diesel accent stitching and
embroidered S logo
Standard on 300S



Nappa leather-faced — Black /
Smoke with Light Diesel accent
stitching and embroidered S logo
Standard on 300S



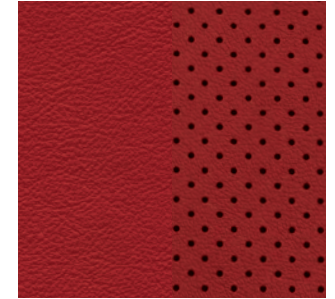
Nappa leather-faced — Radar Red
with Light Diesel accent stitching
and embroidered S logo
Available on 300S



Nappa leather-faced with
perforated inserts — Black with
Light Diesel accent stitching and
embroidered S logo
Available on 300S with
Comfort Group



Nappa leather-faced with
perforated inserts — Black /
Smoke with Light Diesel accent
stitching and embroidered S logo
Available on 300S with
Comfort Group



Nappa leather-faced with
perforated inserts — Radar Red
with Light Diesel accent stitching
and embroidered S logo
Available on 300S with
Comfort Group



► 300S with Radar Red Nappa Leather-Faced Seats and Light Diesel accent stitching

POWER AND FUEL ECONOMY

Based on 2021 *EnerGuide* fuel consumption ratings. Government of Canada test methods used. Your actual fuel consumption will vary based on driving habits and other factors.

For *EnerGuide* information, please ask your retailer or visit the Government of Canada

Website: www.vehicles.nrcan.gc.ca

| Engine | Transmission | Horsepower | Torque (lb-ft) | L/100 km (mpg) | |
|--------------------------------------|--------------------------------|------------|----------------|----------------|----------|
| | | | | City | Highway |
| 3.6L Pentastar™ VVT V6 (RWD) | TorqueFlite® 8-speed automatic | 292 | 260 | 12.4 (23) | 7.8 (36) |
| 3.6L Pentastar VVT V6 (AWD) | TorqueFlite 8-speed automatic | 292 | 260 | 12.8 (22) | 8.7 (32) |
| 5.7L HEMI® VVT V8 with FuelSaver MDS | TorqueFlite 8-speed automatic | 363 | 394 | 14.7 (19) | 9.4 (30) |

SPECIFICATIONS*

| Curb Weight, kg (lb) | RWD | AWD |
|---|---------------------------------------|-------------|
| 3.6L Pentastar VVT V6 | 1820 (4013) | 1935 (4267) |
| 5.7L HEMI VVT V8 with FuelSaver MDS | 1987 (4380) | — |
| GVWR, kg (lb) | RWD | AWD |
| 3.6L Pentastar VVT V6 | 2313 (5100) | 2427 (5350) |
| 5.7L HEMI VVT V8 with FuelSaver MDS | 2427 (5350) | — |
| Towing (when properly equipped), kg (lb) | | |
| Maximum Towing Capacity | 454 (1000) | |
| Exterior, mm (in) | | |
| Wheelbase | 3048 (120) | |
| Front Track | 1611 (63.4) | |
| Rear Track | 1620 (63.8) | |
| Overall Length | 5044 (198.6) | |
| Overall Height | RWD with 18-inch wheels — 1485 (58.5) | |
| | RWD with 20-inch wheels — 1492 (58.7) | |
| | AWD with 19-inch wheels — 1503 (59.2) | |
| Overall Width | 1902 (75.0) | |
| Ground Clearance | RWD with 18-inch wheels — 120 (4.7) | |
| | RWD with 20-inch wheels — 127 (5.0) | |
| | AWD with 19-inch wheels — 122 (4.8) | |
| Interior, mm (in) | Front | Rear |
| Headroom | 981 (38.6) | 963 (37.9) |
| Headroom with Dual-Pane Panoramic Power Sunroof | 936.6 (36.9) | 937 (36.9) |
| Legroom | 1061 (41.8) | 1019 (40.1) |
| Hip Room | 1428 (56.2) | 1425 (56.1) |
| Shoulder Room | 1510 (59.5) | 1465 (57.7) |
| Volumes and Capacities | | |
| Cargo Volume, L (cu ft) | 462 (16.3) | |
| Total Interior Volume, L (cu ft) | 3010 (106.3) | |
| Seating Capacity | 5 | |
| Fuel Tank Capacity, L (imp gal) | 70 (15.4) | |

*Maximum ratings based on properly equipped vehicles. All dimensions in mm (in) unless otherwise noted.

SELECT PACKAGE DETAILS

ALL-WHEEL-DRIVE (AWD) ENHANCEMENTS

- 19-inch aluminum wheels with 235/55R19 BSW all-season performance tires
- 3.07 rear axle ratio
- Active transfer case with front-axle disconnect
- AWD badge
- AWD-tuned suspension
- Performance 4-wheel antilock disc brakes

CHROME APPEARANCE PACKAGE

- 20-inch polished aluminum wheels with 245/45R20 BSW all-season performance tires
- Bright daylight opening (DLO) mouldings
- Bright exterior mirrors
- Platinum grille and grille surround

COMFORT GROUP

- 6 premium speakers with 276-watt amplifier (Touring-L)
- Adaptive Bi-xenon High Intensity Discharge (HID) headlamps with automatic levelling
- Auto adjust-in-Reverse exterior mirrors
- Black Olive Ash Burl interior accents (Touring-L)
- Door sill scuff pads
- Driver and front-passenger lower LED lamps
- Driver's memory settings for radio presets, seat and exterior mirrors
- Front and rear LED map pocket lamps
- Heated 2nd-row seats
- Heated steering wheel
- Nappa leather-faced seats with perforated inserts (Touring-L)
- Power backlight sunshade
- Power tilt/telescoping steering column
- Rear-seat armrest with storage and illuminated rear cup holders
- Trunk mat
- Ventilated front seats

DRIVER CONVENIENCE GROUP

- 18-inch polished aluminum wheels (RWD)
- LED fog lamps
- Remote Start System
- Universal garage door opener²³

MOPAR® INTERIOR PROTECTION GROUP

- Black Premium Carpet Cargo Mat
- Bright Door Sills
- Bright Pedals
- Premium Floor Mats

POPULAR EQUIPMENT GROUP

- 9 premium Alpine® speakers with trunk-mounted subwoofer and 506-watt amplifier
- Dual-Pane Panoramic Power Sunroof
- Uconnect® 4C NAV³ multimedia centre with 8.4-inch touchscreen

S MODEL APPEARANCE PACKAGE

- Body-colour performance front fascia
- Body-colour rear spoiler
- Gloss Black fascia appliqué
- Lower grille close-out panels
- Premium SRT® fog lamps

SAFETYTEC™ PLUS GROUP

- 6 premium Alpine speakers (Touring and Touring-L)
- Adaptive Cruise Control with Stop¹⁷
- Advanced Brake Assist
- Auto High-Beam Headlamp Control
- Forward Collision Warning with Active Braking¹⁷
- Lane Departure Warning with Lane Keep Assist¹⁷

SPORT APPEARANCE PACKAGE

- 20-inch Black Noise aluminum wheels (19-inch on AWD)
- Black grille with Black Chrome surround
- Black headlamp and taillamp bezels
- Black Noise exterior badging
- Body-colour performance front fascia (Touring-L)
- Gloss Black DLO surround mouldings
- Gloss Black front fascia appliqué
- Lower grille close-out panels (Touring-L)
- Premium SRT fog lamps (Touring-L)

UCONNECT MULTIMEDIA CENTRES

UCONNECT 4C

- 4G LTE Wi-Fi¹⁰ Hotspot-capable
- 8.4-inch full-colour high-resolution touchscreen display
- AM/FM/HD radio (where stations are available)
- Apple CarPlay compatibility⁶
- Android Auto™ integration⁶
- Do Not Disturb feature to route incoming calls to voice mail and suppress texts or send automated replies
- Drag-and-Drop Menu Bar
- Hands-free⁴ communication with Bluetooth® streaming audio
- HVAC control integration
- Media Hub, including 2 USB ports and auxiliary audio input jack

- Preset text reply and incoming voice text message reader²⁴
- Siri Eyes Free⁵ for iPhone 4s and later
- SiriusXM Guardian⁷ and SiriusXM¹⁵ with 1-year subscription, including Tune Start, replay, and alert settings for favourite songs, artists and sports teams

UCONNECT 4C NAV³

Uconnect 4C features plus:

- Premium navigation with pinch-to-zoom multi-touch features, 1-step voice destination entry, and 3D landmarks, city models and terrains⁵
- SiriusXM Travel Link and SiriusXM Traffic Plus¹⁶ with a 5-year subscription

WARRANTIES: 2021 Chrysler, Jeep, Dodge and Ram vehicles are backed by a 5-year or 100,000-kilometre fully transferable Powertrain Limited Warranty* with \$0 deductible plus 24-hour roadside assistance.[†] SRT vehicles are backed by a 3-year or 60,000-kilometre fully transferable Powertrain Limited Warranty* with \$0 deductible plus 24-hour roadside assistance. Basic Warranty coverage is for 3 years or 60,000 kilometres.* Rust-through coverage on all body sheet metal is for 3 years. The Cummins Turbo Diesel engine is protected by a separate Limited Warranty covering the engine for 5 years or 160,000 kilometres.[‡] The EcoDiesel engine is backed by a 5-year or 100,000-kilometre fully transferable Powertrain Limited Warranty* with \$0 deductible plus 24-hour roadside assistance.[‡]

*Whichever comes first. Some conditions may apply. [†]The 5-Year/100,000-Kilometre Powertrain Limited Warranty does not apply to vehicles sold for certain commercial uses. See your retailer for full details. Authentic Chrysler Accessories by Mopar are designed specifically for your Chrysler vehicle for exceptional fit, finish and performance. Visit your retailer or mopar.ca

MOPAR VEHICLE PROTECTION: FCA Canada Inc. has a vested interest in your satisfaction and owner experience with your new vehicle. Mopar Vehicle Protection offers extended service and maintenance plans to help ensure you'll enjoy your vehicle for many years down the road — for just pennies a day. For more information on comprehensive vehicle coverage, see your local Chrysler, Jeep, Dodge and Ram retailer or call 1-800-465-2001.

ABOUT THIS CATALOGUE: since the time of printing, some of the information you'll find in this catalogue may have been updated. Ask your retailer for details. Some of the equipment shown or described throughout this catalogue is available at extra cost. Specifications, descriptions, illustrative materials and all competitive comparisons contained herein are as accurate as known at the time this publication was approved for printing. FCA Canada Inc. reserves the right to make changes at any time without notice and without incurring obligation. For the price of the model with the equipment you desire, or verification of specifications contained herein, see your Chrysler, Jeep, Dodge and Ram retailer. ©2021 FCA Canada Inc. All Rights Reserved. Chrysler, Dodge, Jeep, Ram, Mopar, SRT, Chrysler 300S, 300C, 300 Limited, 300 Touring, the Chrysler wing design, HEMI, Mopar Vehicle Protection, Park-Sense, ParkView, Sentry Key, TorqueFlite and Uconnect are registered trademarks, and Pentastar, SafetyTec, Send & Go and Keyless Enter 'n Go are trademarks of FCA US LLC. Alcantara is a registered trademark of Alcantara S.p.A. Alpine and the Alpine logo are registered trademarks of Alpine Electronics, Inc. Amazon, Alexa and all related logos are trademarks of Amazon.com, Inc. or its affiliates. Google, Android, YouTube, Android Auto and other marks are trademarks of Google LLC. Bluetooth is a registered trademark of Bluetooth SIG, Inc. ©2021 SiriusXM Canada Inc. "SiriusXM," SiriusXM Guardian, the SiriusXM logo, channel names and logos are trademarks of SiriusXM Radio Inc. and are used under licence. Harman Kardon is a registered trademark and GreenEdge is a trademark of Harman International Industries, Incorporated. Cummins is a registered trademark of Cummins, Inc. Siri and iPhone are registered trademarks of Apple Inc. Facebook and logo are registered trademarks of Facebook, Inc. The Twitter name, logo, Twitter T, Tweet and Twitter bird are service marks of Twitter, Inc. *WardsAuto* is a registered trademark of PENTON BUSINESS MEDIA, INC. All other trademarks, images and logos are the property of their respective owners and are displayed in this publication with permission. All rights reserved.

DISCLAIMERS: 1. Based on IHS Markit Automotive Canadian New Vehicle Total Registrations for combined years CY 2015 to CYTD September 2020. 2. Based on the latest available competitive information and *WardsAuto* Large/Regular vehicle segmentation. Excludes other vehicles designed and manufactured by FCA US LLC. 3. Never program while driving. GPS mapping and available 3D navigation may not be detailed or available in all areas or reflect current road regulations. 4. Driving while distracted can result in loss of vehicle control. Only use mobile phones and other devices, even with voice commands, when it is safe to do so. Voice commands of phone require a Bluetooth compatible phone. 5. Siri Eyes Free requires an iPhone equipped with Siri. Certain features not available while the vehicle is in motion. iPhone must be within active cellular range. Customer's existing iPhone data rates apply to Internet-supported features. 6. Driving while distracted can result in loss of vehicle control. Only use mobile phones and other devices, even with voice controls, when it is safe to do so. Apple CarPlay requires a compatible iPhone connected via USB cable to the Uconnect system. To use Android Auto on your car display, you'll need an Android phone running Android 6.0 or higher, an active data plan and the Android Auto App. 7. All SiriusXM Guardian equipped vehicles come with a 12-month complimentary trial effective on the date of purchase or lease of a new vehicle. Upon expiration of the trial period, purchase of a subscription is required to continue SiriusXM Guardian. SiriusXM Guardian is available only on equipped vehicles purchased within the United States, Puerto Rico and Canada. Services can only be used where cellular coverage is available. See Uconnect and SiriusXM Guardian Terms of Service for complete service limitations. 8. Requires registration of vehicle to SiriusXM Guardian connected services and fulfillment of minimum subscription requirements. Amazon, Alexa and all related logos and marks are trademarks of Amazon.com, Inc. or its affiliates. 9. To use Vehicle Finder, you must have the Uconnect App with SiriusXM Guardian installed on a compatible smartphone and have an active subscription to SiriusXM Guardian. 10. Three-month/1GB trial included with the purchase or lease of a new vehicle. Upon expiration of the trial period, purchase of a subscription is required. Wi-Fi Hotspot available through third-party subscription. Requires Internet-enabled mobile device. See retailer for details. This feature is not intended for use by the driver while the vehicle is in motion. Always drive carefully. 11. Roadside Assistance Call connects you with an agent who will provide Roadside Assistance Service. Vehicle must be within the United States, Puerto Rico or Canada and have network coverage. Additional roadside assistance charges may apply. Check warranty for details. 12. In the event of a medical or other emergency, press the SOS button to be connected to a Customer Care agent who can direct emergency assistance to your vehicle's GPS location. 13. Stolen vehicle police report required. 14. Send & Go requires a vehicle equipped with Navigation. To use Send & Go, you must have the Uconnect App with SiriusXM Guardian installed on a compatible smartphone and have an active subscription to SiriusXM Guardian. 15. Requires SiriusXM radio subscriptions governed by SiriusXM Canada Customer Agreement available at siriusxm.ca/terms. 16. SiriusXM Traffic Plus and SiriusXM Travel Link require a subscription, sold separately, or as a package, by SiriusXM Radio Inc. **If you decide to continue service after your trial period included with the new vehicle purchase, the subscription plan you choose will automatically renew thereafter and you will be charged according to your chosen payment method at then-current rates.** Trial service is not transferable. Fees and taxes apply. Please see the Customer Agreement at www.siriusxm.ca for complete terms and how to cancel, which includes calling SiriusXM at 1-866-539-7474. All fees and programming are subject to change. Not all vehicles or devices are capable of receiving all services offered by SiriusXM. Data displays and individual product availability vary by vehicle hardware. Current information and features may not be available in all locations, or on all receivers. Weather Forecast, Current Conditions may not be available in all locations. 17. This is a driver convenience system, not a substitute for active driver involvement. The driver must remain aware of his/her surroundings and be prepared to take corrective action to avoid collisions. 18. Based on *EnerGuide* highway fuel consumption ratings and fuel tank options. Government of Canada test methods used. Your actual fuel consumption will vary based on driving habits and other factors. Ask your retailer for the *EnerGuide* information. Miles per gallon (mpg) ratings based on imperial gallon. 19. No system can repeal the laws of physics or overcome careless driving actions. Performance is limited by available traction, which snow, ice and other conditions can affect. When the warning lamp flashes, the driver needs to use less throttle and adapt speed and driving behaviour to prevailing road conditions. 20. The Advanced Front Air Bags in this vehicle are certified to the Federal regulations for Advanced Air Bags. Children 12 years old and younger should always ride buckled up in a rear seat. Infants in rear-facing child restraints should never ride in the front seat of a vehicle with a passenger front air bag. All occupants should always wear their lap and shoulder belts properly. 21. Always sit properly with the head restraint properly adjusted. Never place anything in front of the head restraint. 22. Vehicle must be locked and system activated for alarm to sound. 23. Not compatible with all garage door openers. 24. Preset voice-to-text messaging and incoming text message reading require a MAP-enabled phone.



CHRYSLER 300



2021 CHRYSLER 300
CHRYSLER.CA / 1.800.361.3700



Like us on:
[facebook.com/
chryslercanada](https://facebook.com/chryslercanada)



Follow us on:
[twitter.com/
chryslercanada](https://twitter.com/chryslercanada)



Sign up for
updates at:
chrysler.ca

Chrysler is a registered trademark of FCA US LLC.