

Chrysler Grand Caravan



Catalogue Contents

- 3 Highlights
- 4 Versatility
- 6 Convenience
- 8 Infotainment
- 10 Safety & Security
- 11 Powertrain
- 12 Towing
- 13 Features/Options
- 14 Exterior Colours/
Interior Colours/Wheels





STANDARD SEATING FOR SEVEN



BUILT-IN MULTIMEDIA CENTRE



7-INCH TOUCHSCREEN

Grand Opening Capability



► SXT in Velvet Red Pearl

Properly secure all cargo.

INTUITIVE DESIGN FROM THE INSIDE OUT.

The Chrysler Grand Caravan provides a stylish and well-equipped family vehicle, prioritizing safety and security combined with spacious versatility. This highly versatile family vehicle carries available seating for up to eight with expansive storage and Stow 'n Go® seating. The sleek, sporty and functional exterior includes dual power-sliding side doors, 17-inch wheels and an available Stow N Place® roof rack. As Canada's Best-Selling engine,^{11*} the standard 3.6L Pentastar™ V6 offers an optimal combination of power and efficiency, as well as contributes to Grand Caravan's Best-in-Class towing capability.¹³

SMART TECHNOLOGY.

With the available SafetyTec™ Group, including the new Pedestrian Automatic Emergency Braking (AEB)¹ and Full-Speed Forward Collision Warning with Active Braking¹ features, the Grand Caravan applies smart technology to an abundance of passive and active standard and available safety and security features. Drivers will embrace the compatible functionality of the standard 7-inch Uconnect® touchscreen multimedia centre. This integrated digital hub for media and communication enables Apple CarPlay² and Android Auto™² to access playlists, maps and more.

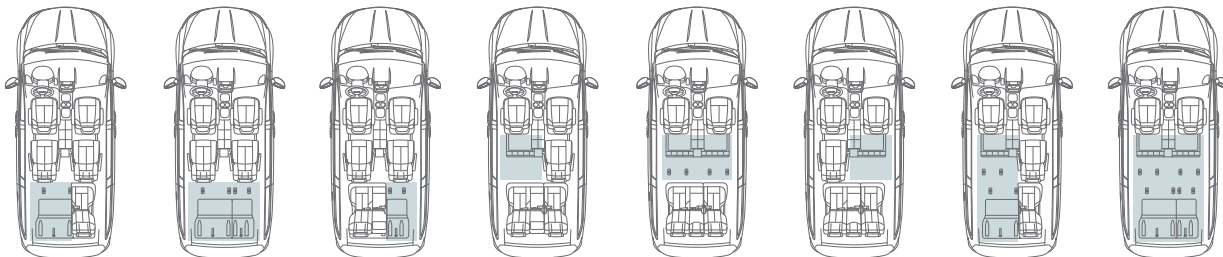
*A note about this catalogue: all disclosures can be found on the last page.

Comfort, Space and Storage to Stretch Your Family's Versatility

240+ Ways to Be Everyday Adaptable

Up to 243 different seating and storage setups can be configured with the available seating for eight, including an easily removable second-row centre seat. When third-row seats are stowed in the floor and second-row seats are removed or stowed with the available second-row Stow 'n Go® seating, an expansive flat cargo space can fit a stack of 4 x 8-ft construction sheets.

► SXT interior in Black cloth with Black Ravine inserts and Sepia accent stitching



VERSATILITY 4

Available Seating for up to 8 Passengers



The mobile family room offers available, removable second-row captain's chairs, in-floor storage bins and an optional second-row middle eighth seat. The eighth seat adds an armrest, cup holder and bin when the seatback is folded down, as well as increases the number of LATCH-installed child seats to five.

The intuitive interior includes the standard Rotary E-shift dial in the centre stack and available open centre console with storage. The available 12-way adjustable driver's seat with four-way power lumbar support and memory settings, and available heated steering wheel, make Grand Caravan built for driver comfort as well as convenience.



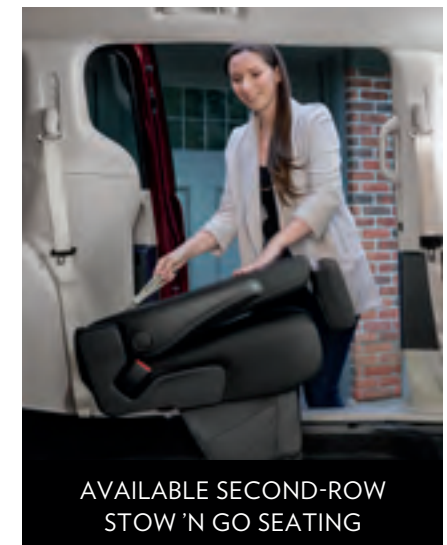
AVAILABLE SECOND- AND
THIRD-ROW STOW 'N GO



THIRD-ROW STOW 'N GO



AVAILABLE SECOND-ROW
IN-FLOOR STORAGE BINS



AVAILABLE SECOND-ROW
STOW 'N GO SEATING

Class-Exclusive Stow 'n Go[®] Seating and Storage³

► SXT with available second-row Stow 'n Go seating

Properly secure all cargo.

THERE'S A PLACE FOR THAT.

The Chrysler Grand Caravan brings the innovative convenience that the Chrysler minivan lineup is known for, with third-row standard and second-row available Stow 'n Go fold-in-floor seating and storage. Simply fold the seats into the floor to make plenty of space for all your cargo. Use the easy-to-access in-floor bins to get even more capacity to store your gear and valuables for safekeeping.

Easy Access

DUAL POWER-SLIDING DOORS AND LIFTGATE.

Getting passengers along with their belongings in and out quickly and smoothly is made simple with the touch of a button from the driver's seat to open and close the sliding side doors and liftgate.

KEYLESS ENTER 'N GO.™

This available passive entry system allows you to open doors as well as start the vehicle with a keyless, push-button ignition via a personalized fob. With the fob on or near you, simply pull the door handle or rear liftgate latch to unlock the vehicle.



► SXT in Brilliant Black Crystal Pearl

Properly secure all cargo.

CONVENIENCE 7

Home Away From Home



REAR-SEAT ENTERTAINMENT.

Help keep the whole family entertained and pass the time — no matter how long the trip — with a single overhead integrated DVD player that lets passengers watch their favourite shows and movies anytime, anywhere.

FIRST-ROW CONTENT CONTROL.

The available Blu-ray™/DVD player with an integrated USB port in the first-row centre stack can be used to play movies on the second-row overhead video screen.

KEYSENSE.

Ideal for families with new drivers, the available KeySense key fob promotes safe driving habits and limits distractions. Using a four-digit PIN that is programmed through the Uconnect® touchscreen, the KeySense fob can limit driving speed and audio volume, block select SiriusXM⁴ channels, mute the audio when front seat belts are not buckled and prevent disabling of available active safety systems.

PREMIUM ACOUSTICS.

The standard built-in Active Noise Cancellation (ANC) technology subdues unwanted noise to enhance cabin quietness. It also allows for premium sound quality to be delivered through the standard six-speaker audio system.



UCONNECT® IS YOUR COMMUNICATION CENTRE.

Remain focused on the road as you communicate, and stay entertained, with the standard 7-inch Uconnect multimedia centre touchscreen. With your compatible phone paired to the Uconnect 4 system's hands-free technology, the Grand Caravan features integrated voice command⁵ with Bluetooth®, voice text reply,⁶ Apple CarPlay² and Android Auto.^{TM2} Siri Eyes Free⁷ allows you to make voice commands⁵ with your compatible iPhone, and Do Not Disturb can hold calls and texts or send automated replies.

In Touch Wherever You Go

7-INCH IN-CLUSTER DISPLAY CENTRE.

This available premium display delivers crisp, configurable graphics integrated between the cluster gauges. A customizable screen allows for a range of driver-assist settings, such as digital speedometer, fuel economy, alerts for available features like Full-Speed Forward Collision Warning with Active Braking¹ and turn-by-turn directions if equipped with navigation.⁸



Listen to your favourite channel from your connected device, then flip to SiriusXM⁴ in your car and enjoy the best ad-free music, plus every major sport and the biggest names in entertainment, news and comedy. You'll get over 140 channels, all at the press of a button. With the SiriusXM All Access⁴ package, you get every channel available on your satellite radio, and you can also listen at home or on the go with your connected devices and the SiriusXM App,⁴ which is included with your one-year trial. Available.

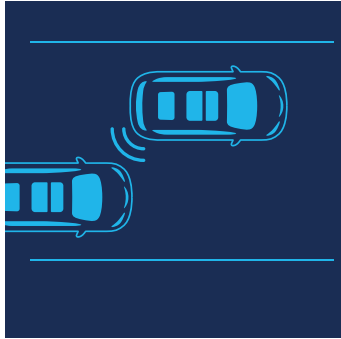


Display your favourite iPhone apps right on your Uconnect touchscreen. Access your iTunes library, call anyone in your contacts list or just ask Siri⁹ to help you out while you drive. Get directions, make calls and send messages, and connect to Apple Music, all without pausing your drive.² Standard.



Connect your Android phone to bring the best of Google with you in your Uconnect system. Talk to Google on Android Auto² and send messages, get directions, control media and more with your voice so you can keep your focus on driving. Just say, "Hey Google" or long-press the voice-control button on your steering wheel. Standard.

Your Family's Protective Bubble

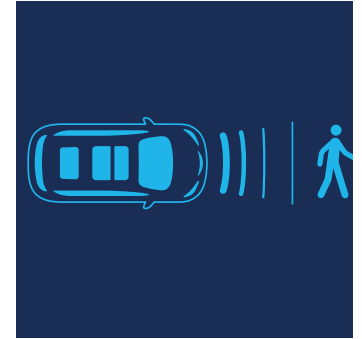


BLIND-SPOT MONITORING.¹

When driving forward, the available Blind-Spot Monitoring¹ continually monitors the vehicle's side blind-spot zones using dual radar sensors. When a side blind spot is encroached, you're notified via an illuminated icon on the appropriate sideview mirror; if the turn signal is activated, an audible notification sounds. This system also includes Rear Cross-Path Detection¹ to alert you with an audible warning if vehicles or objects are in your path when driving in Reverse.

PEDESTRIAN AUTOMATIC EMERGENCY BRAKING.¹

Works in tandem with the forward camera and braking system to activate when pedestrians are in the vehicle's path and the driver has not taken action to brake. In situations such as stop-and-go traffic, the available system is able to bring the vehicle to a complete stop without any driver intervention, then prompt the driver to press the Resume button or tap the accelerator to reengage once the path is clear.

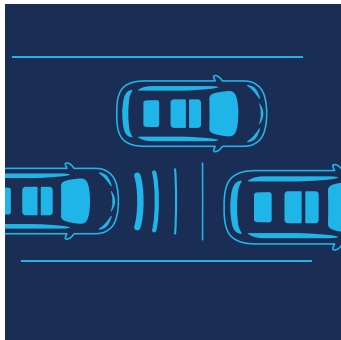


EIGHT PASSENGER AIR BAGS.¹⁰

Eight standard air bags include front multistage air bags with adaptive venting technology, side-curtain air bags, driver and front-passenger inflatable knee bolster air bags, and front-seat-mounted side-impact air bags. Based on occupant size and impact severity, the front air bags open at varying levels of inflation. Side air bag inflatable curtains extend over front and rear seating rows.

PARK-SENSE® REAR PARK ASSIST WITH STOP.¹

When driving in Reverse at low speeds, the available rear sensors send out ultrasonic waves and provide visual and audible alerts when nearby obstacles are detected, helping to prevent a potential rear collision in parking situations.

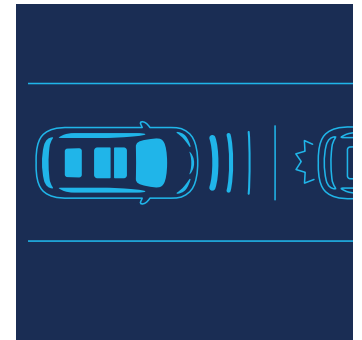


FULL-SPEED FORWARD COLLISION WARNING WITH ACTIVE BRAKING.¹

Using radar and camera sensors, this available system detects if the vehicle is approaching another vehicle or large obstacle too rapidly. When an object is detected, the system can provide audible and visual warnings and can assist the driver in avoiding an incident by actively applying the brakes. The driver is able to adjust the sensitivity and activate brake support using the Uconnect® touchscreen multimedia centre.

ADVANCED BRAKE ASSIST.

Applies maximum braking power in emergency braking situations, minimizing stopping distance. This system detects the rate and amount of brake application, then automatically applies optimum pressure to the brakes to help reduce braking distances and prevent a potential collision.



PARKVIEW® REAR BACK-UP CAMERA.¹

When driving in Reverse, the standard ParkView Rear Back-Up Camera¹ image is shown on the 7-inch Uconnect touchscreen. It includes selectable static or dynamic grid lines, adjusting as the steering wheel is turned. The wide-angle view of what is immediately behind the vehicle provides confidence when backing out of lots and driveways.

ELECTRIC PARK BRAKE WITH SAFE HOLD.

Activated by a button located near the Rotary E-shift dial, the standard Electric Park Brake switch eliminates the traditional pull park/emergency brake handle. It includes the additional function of Safe Hold, an override feature that can secure the wheels if it detects the driver has exited the vehicle while it's at a standstill but not in the Park gear.





► SXT in Velvet Red Pearl

Canada's Best-Selling Engine: 3.6L Pentastar™ V6¹¹

3.6L PENTASTAR V6 ENGINE.

The 3.6L Pentastar V6 is both commanding and economical. This proven powerhouse delivers an impressive 287 horsepower and 262 lb-ft of torque. Efficiency is further enhanced by standard Engine Stop/Start (ESS) technology that automatically shuts off the engine as the vehicle brakes to a stop, then restarts when the brake pedal is released.

SEGMENT-FIRST 9-SPEED TRANSMISSION³

The Grand Caravan is equipped with a standard 9-speed automatic transmission — a primary contributor to a Best-in-Class gas highway fuel economy rating of 8.4 L/100 km (34 mpg).¹² Its unique calibration allows for outstanding vehicle launch characteristics, with quick, smooth transitions between gears. The transmission also enables lower engine rpm while cruising at highway speeds for optimal fuel efficiency.



► SXT in Ocean Blue Metallic

Best-in-Class Towing — 3,600 lb¹³

WHEN BRINGING MORE IS THE BEST OPTION.

Whether it's loading up the trailer with home-improvement supplies or pulling the family camper or boat, you'll easily get it done with an available Best-in-Class towing capacity of up to 1,633 kg (3,600 lb)¹³ when properly equipped. When you're pulling that much weight, it's nice to know the available Trailer Sway Control (TSC) will help keep you safely on course.

STRUCTURAL INTEGRITY.

The upper body and frame of the Grand Caravan structure are designed as a single unit, helping to achieve premium driving agility. This exceptionally solid architecture carries advanced structural applications, optimized proportions and the use of high-strength steels. The door design also increases visibility around the front windows and pillars, while sound-absorbing barriers throughout the body and engine area help reduce overall cabin noise, contributing to less driver distraction.



SE

POWERTRAIN

- 3.6L Pentastar™ Variable Valve Timing (VVT) V6 engine with Engine Stop/Start (ESS) technology and 9-speed automatic transmission

STANDARD EQUIPMENT

INTERIOR AMENITIES

- 3.5-inch Electronic Vehicle Information Centre (EVIC)
- Active Noise Cancellation (ANC)
- Air conditioning with front dual-zone manual temperature control
- Media Centre:
 - Apple CarPlay² and Android Auto™²
 - Hands-free⁵ communication with Bluetooth® streaming audio
 - Media Hub with USB port and auxiliary audio input jack
 - Uconnect® 4 multimedia centre with 7-inch touchscreen and 6 speakers
- Power door locks
- Power front- and 2nd-row windows with driver's 1-touch down
- Rotary E-shift dial
- Seating:
 - 2nd-row bench seat
 - 3rd-row Stow 'n Go® fold-in-floor 60/40 split-folding bench seat
 - Cloth bucket seats
 - Manual 6-way driver's seat
- Storage:
 - Floor tray and console
 - Lower instrument-panel cubby bin
- Sun visors with illuminated vanity mirrors
- Sunscreen glass
- Tilt and telescoping steering column
- Two 12-volt auxiliary power outlets
- Urethane steering wheel with cruise controls

EXTERIOR FEATURES

- 17-inch steel wheels with covers and 235/65R17 BSW All-Season tires
- Accent-colour shark fin antenna
- Black door handles
- Black grille
- Body-colour lower bodyside sill appliqué
- Bright daylight opening (DLO) surround moulding
- Chrysler wing grille badge and rear deck lid Grand Caravan badge
- Halogen headlamps with time-off delay
- Incandescent taillamps
- Power, heated, manual-folding mirrors with body-colour caps

SAFETY & SECURITY

- 4-wheel antilock disc brakes with Rain Brake Support and Ready Alert Braking
- 8 air bags;¹⁰ including advanced multistage driver and front-passenger, driver and front-passenger inflatable knee blocker, supplemental front-seat-mounted side, and supplemental side-curtain air bags for all rows
- Child Seat Anchor System (LATCH-ready)
- Electric Park Brake with Safe Hold
- Electronic Stability Control (ESC)¹⁴ with Hill Start Assist
- ParkView® Rear Back-Up Camera¹
- Proximity entry (driver's door) and push-button start
- Sentry Key® anti-theft engine immobilizer
- Tire Pressure Monitoring Display
- Tire Service Kit, including puncture sealant and portable air compressor

CAPABILITY & FUNCTIONALITY

- 180-amp alternator
- 650-amp maintenance-free battery
- Capless fuel filler
- Cruise control
- Electric power steering
- Engine block heater
- Normal-duty suspension

OPTIONAL EQUIPMENT

- Air Conditioning with Tri-Zone Manual Temperature Control
- Black Stow N Place® Roof Rack
- Front Floor Mats
- Inflatable Spare Tire Kit
- KeySense Programmable Key Fob
- Mopar® Front and Rear Splash Guards
- Mopar Interior Protection Package
- Mopar Roadside Emergency Kit
- Mopar Running Boards and Splash Guards
- Rear Floor Mats
- SafetyTec™ Group



SXT

POWERTRAIN

- 3.6L Pentastar VVT V6 engine with ESS and 9-speed automatic transmission

ENHANCEMENTS vs. SE

INTERIOR AMENITIES

- 2nd-row removable quad seats with in-floor storage bins
- Air conditioning with tri-zone manual temperature control
- Cargo compartment lamp
- Front and rear floor mats
- Front seatback map pockets
- Interior observation mirror
- Overhead ambient surround lighting with LED courtesy lamps
- Power 12-way driver's seat including 4-way power lumbar adjust
- Power front windows with 1-touch up-and-down
- Steering wheel-mounted audio controls

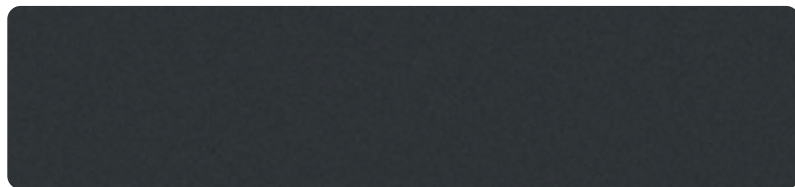
EXTERIOR FEATURES

- 17-inch Tech Silver aluminum wheels
- Active grille shutters
- Automatic headlamps
- Black grille with Bright surround
- Body-colour door handles
- Body-colour shark fin antenna

OPTIONAL EQUIPMENT

- 2nd-row Stow 'n Go Bucket Seats
- 8-Passenger Seating
- Black Stow N Place Roof Rack
- Cold Weather Group
- Inflatable Spare Tire Kit
- KeySense Programmable Key Fob
- Mopar Front and Rear Splash Guards
- Mopar Interior Protection Package
- Mopar Roadside Emergency Kit
- Mopar Running Boards and Splash Guards
- Power Group
- SafetyTec Group
- Single Overhead Integrated DVD Player
- SiriusXM⁴
- Trailer Tow Group

EXTERIOR COLOURS



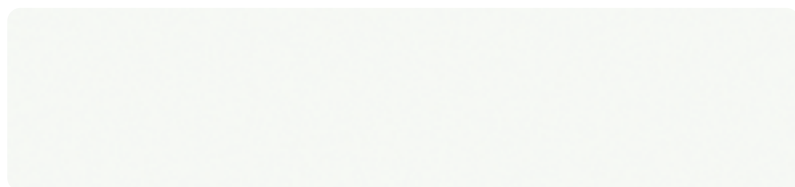
Granite Crystal Metallic



Billet Metallic



Ocean Blue Metallic



Bright White

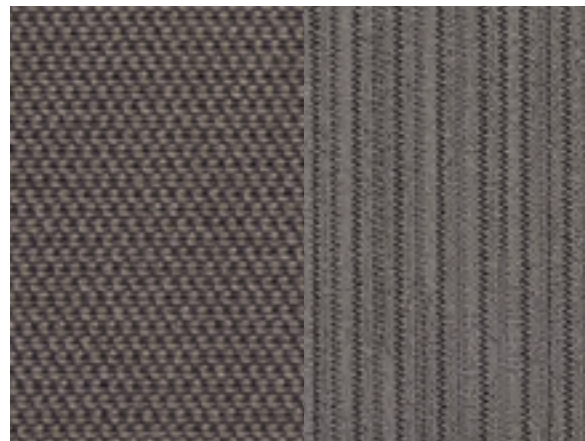


Brilliant Black Crystal Pearl

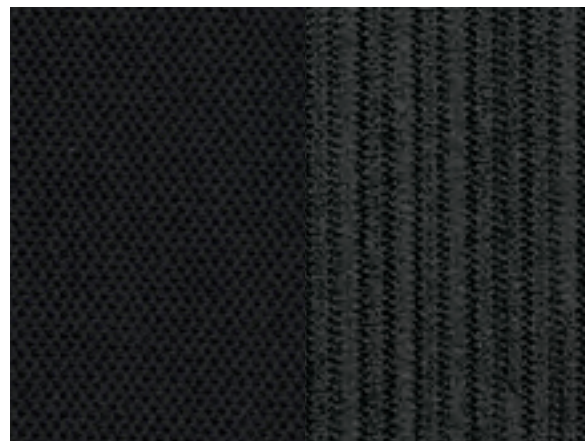


Velvet Red Pearl

INTERIOR COLOURS



Cloth — Toffee with Toffee Ravine inserts
and Toffee accent stitching
Standard on Grand Caravan and
Grand Caravan SXT



Cloth — Black with Black Ravine inserts
and Sepia accent stitching
Standard on Grand Caravan and
Grand Caravan SXT

WHEELS



17-inch steel with cover
Standard on Grand Caravan
(WFU)



17-inch Tech Silver aluminum
Standard on Grand Caravan SXT
(WFN)

WARRANTIES: 2021 Chrysler, Jeep, Dodge and Ram vehicles are backed by a 5-year or 100,000-kilometre fully transferable Powertrain Limited Warranty* with \$0 deductible plus 24-hour roadside assistance.† SRT vehicles are backed by a 3-year or 60,000-kilometre fully transferable Powertrain Limited Warranty* with \$0 deductible plus 24-hour roadside assistance. Basic Warranty coverage is for 3 years or 60,000 kilometres.‡ Rust-through coverage on all body sheet metal is for 3 years. The Cummins Turbo Diesel engine is protected by a separate Limited Warranty covering the engine for 5 years or 160,000 kilometres. The EcoDiesel engine is backed by a 5-year or 100,000-kilometre fully transferable Powertrain Limited Warranty* with \$0 deductible plus 24-hour roadside assistance.†

*Whichever comes first. Some conditions may apply. †The 5-Year/100,000-Kilometre Powertrain Limited Warranty does not apply to vehicles sold for certain commercial uses. See your retailer for full details.

AUTHENTIC CHRYSLER ACCESSORIES BY MOPAR are designed specifically for your Chrysler vehicle for exceptional fit, finish and performance. Visit your retailer or mopar.ca

MOPAR VEHICLE PROTECTION: FCA Canada Inc. has a vested interest in your satisfaction and owner experience with your new vehicle. Mopar Vehicle Protection offers extended service and maintenance plans to help ensure you'll enjoy your vehicle for many years down the road — for just pennies a day. For more information on comprehensive vehicle coverage, see your local Chrysler, Jeep, Dodge and Ram retailer or call 1-800-465-2001.

ABOUT THIS CATALOGUE: Since the time of printing, some of the information you'll find in this catalogue may have been updated. Ask your retailer for details. Some of the equipment shown or described throughout this catalogue is available at extra cost. Specifications, descriptions, illustrative materials and all competitive comparisons contained herein are as accurate as known at the time this publication was approved for printing. FCA Canada Inc. reserves the right to make changes at any time without notice and without incurring obligation. For the price of the model with the equipment you desire, or verification of specifications contained herein, see your Chrysler, Jeep, Dodge and Ram retailer. ©2021 FCA Canada Inc. All Rights Reserved. Chrysler, Dodge, Jeep, Ram, Mopar, SRT, SXT, Grand Caravan, the Chrysler wing design, Mopar Vehicle Protection, Park-Sense, ParkView, Sentry Key, Stow 'n Go, Stow 'n Place and Uconnect are registered trademarks, and Keyless Enter 'n Go, KeySense, Pentastar and SafetyTec are trademarks of FCA US LLC. Google, Android, YouTube, Android Auto and other marks are trademarks of Google LLC. Bluetooth is a registered trademark of Bluetooth SIG, Inc. ©2021 Sirius XM Canada Inc. 'SiriusXM,' SiriusXM Guardian, the SiriusXM logo, channel names and logos are trademarks of Sirius XM Radio Inc. and are used under licence. Blu-ray is a trademark of the Blu-ray Disc Association. Cummins is a registered trademark of Cummins, Inc. Apple CarPlay, iPhone and Siri are registered trademarks of Apple Inc. Facebook and logo are registered trademarks of Facebook, Inc. The Twitter name, logo, Twitter T, Tweet and Twitter bird are service marks of Twitter, Inc. All other trademarks, images and logos are the property of their respective owners and are displayed in this publication with permission. All rights reserved.

DISCLAIMERS: 1. This is a driver convenience system, not a substitute for active driver involvement. The driver must remain aware of their surroundings and be prepared to take corrective action to avoid collisions. 2. Driving while distracted can result in loss of vehicle control. Only use mobile phones and other devices, even with voice controls, when it is safe to do so. Apple CarPlay requires a compatible iPhone connected via USB cable to the Uconnect system. To use Android Auto on your car display, you'll need an Android phone running Android 6.0 or higher, an active data plan and the Android Auto App. 3. Based on the latest available competitive information for minivans in the *WardsAuto* Small Van segment. Excludes other vehicles designed and manufactured by FCA US LLC. 4. Requires SiriusXM radio subscriptions governed by SiriusXM Canada Customer Agreement available at siriusxm.ca/terms. 5. Driving while distracted can result in loss of vehicle control. Only use mobile phones and other devices, even with voice commands, when it is safe to do so. Voice commands of phone require a Bluetooth compatible phone. 6. Preset voice-to-text messaging and incoming text message reading require a MAP-enabled phone. 7. Siri Eyes Free requires an iPhone equipped with Siri. Certain features not available while the vehicle is in motion. iPhone must be within active cellular range. Customer's existing iPhone data rates apply to Internet-supported features. 8. Never program while driving. GPS mapping and available 3D navigation may not be detailed or available in all areas or reflect current road regulations. 9. Requires an iPhone with Siri. Certain features are not available while the vehicle is in motion. iPhone must be within active cellular range. Customer's existing iPhone data rates apply to Internet-supported features. 10. The Advanced Front Air Bags in this vehicle are certified to the Federal regulations for Advanced Air Bags. Children 12 years old and younger should always ride buckled up in a rear seat. Infants in rear-facing child restraints should never ride in the front seat of a vehicle with a passenger front air bag. All occupants should always wear their lap and shoulder belts properly. 11. Based on IHS Markit Automotive Canadian New Vehicle Total Registrations for combined years CY 2015 to CYTD September 2020. 12. Based on *EnerGuide* highway fuel consumption ratings and fuel tank options. Government of Canada test methods used. Your actual fuel consumption will vary based on driving habits and other factors. Ask your retailer for the *EnerGuide* information. 8.4 L / 100 km (34 mpg) highway and 12.4 L / 100 km (23 mpg) city on Chrysler Grand Caravan models equipped with the 3.6L Pentastar VVT V6 engine and 9-speed automatic transmission. Miles per gallon (mpg) ratings based on imperial gallon. Excludes other vehicles designed and manufactured by FCA US LLC. 13. Based on the latest available competitive information for minivans in the *WardsAuto* Small Van segment. Excludes other vehicles designed and manufactured by FCA US LLC. When properly equipped. 14. No system can repeal the laws of physics or overcome careless driving actions. Performance is limited by available traction, which snow, ice and other conditions can affect. When the warning lamp flashes, the driver needs to use less throttle and adapt speed and driving behaviour to prevailing road conditions.



CHRYSLER GRAND CARAVAN



2021 CHRYSLER GRAND CARAVAN
CHRYSLER.CA/1.800.361.3700



Like us on:
[facebook.com/
chryslercanada](https://facebook.com/chryslercanada)



Follow us on:
[twitter.com/
chryslercanada](https://twitter.com/chryslercanada)



Sign up for
updates at:
chrysler.ca

Chrysler is a registered trademark of FCA US LLC.