



2011 CHRYSLER TOWN & COUNTRY

WE TOOK THE BEST-SELLING MINIVAN^{(1)*} AND MADE IT BETTER. WE SCULPTED NOT ONLY THE STYLING, NOT ONLY THE NEW INTERIORS, BUT THE OVERALL DYNAMICS. WITH THE SAFETYTEC™ PACKAGE, WE GROUPED SAFETY AND SECURITY TECHNOLOGIES LIKE NO OTHER VEHICLE IN ITS CLASS.⁽²⁾ WE POWERED IT WITH AN ENGINE THAT IS AT ONCE POWERFUL AND EFFICIENT. AT THE END OF THE DAY, WE GAVE THIS TOWN & COUNTRY EVERYTHING IT TAKES TO STAKE FURTHER CLAIM TO THE SEGMENT WE INVENTED SOME 27 YEARS AGO.

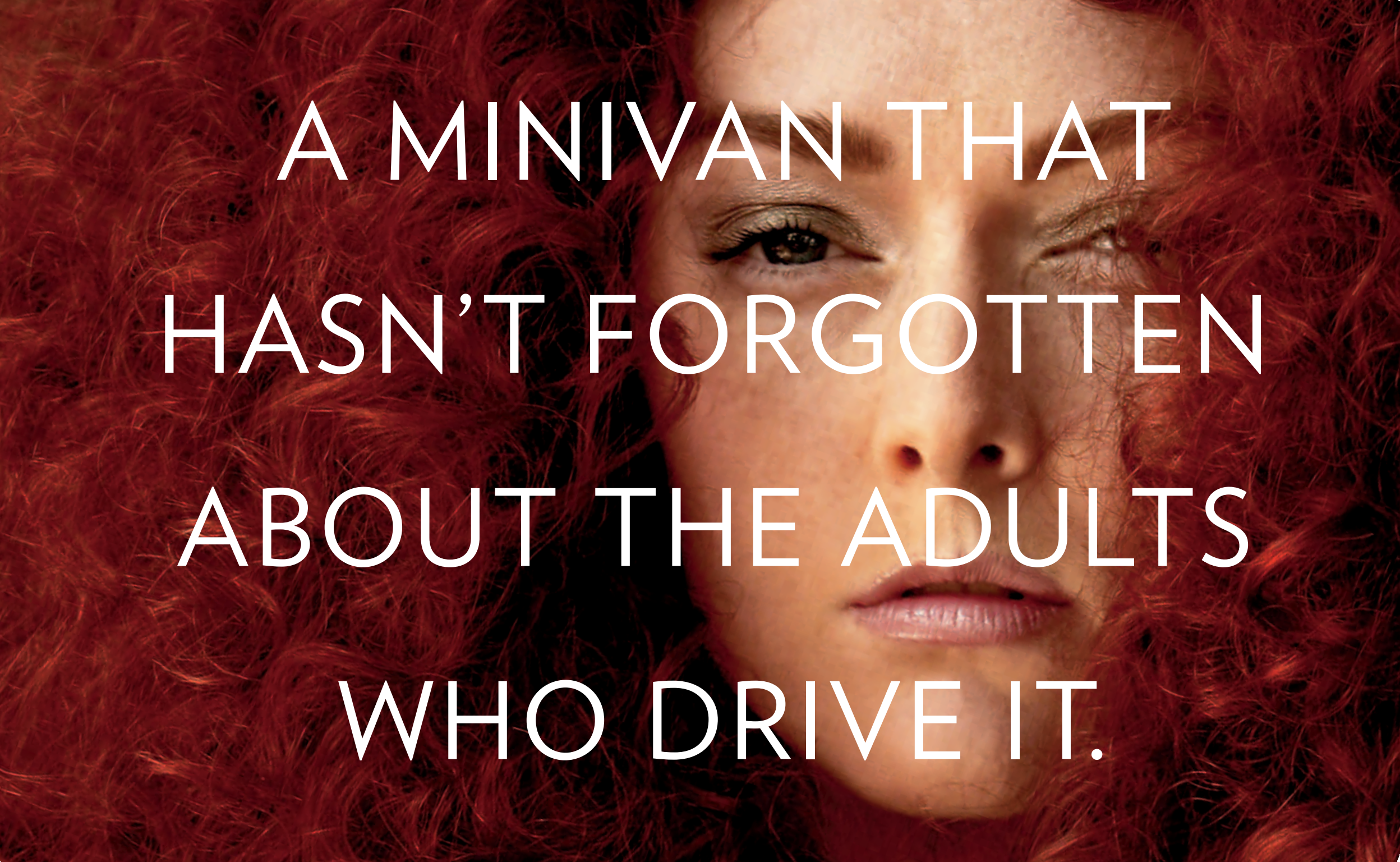
*A note about this brochure: All disclaimers and disclosures can be found with the standard and optional features at the back of this catalog.





IT'S WHAT YOU'D EXPECT FROM THE BEST MINIVAN EVER.
From the hue of burl to the simplicity of a soft-touch surface, Town & Country
delivers the rarest blend of both purpose and pampering. Welcome in.

A MINIVAN THAT
HASN'T FORGOTTEN
ABOUT THE ADULTS
WHO DRIVE IT.




BEST-IN-CLASS⁽²⁾ POWER AND TORQUE

A standard feature in every Town & Country driver: Confidence. When it's time to move into the passing lane, there's power to punch and get ahead thanks to the most advanced engine produced by Chrysler Group LLC. The all-new and standard 3.6L Pentastar® V6 engine with Variable Valve Timing (VVT) delivers 283 horsepower, yet efficiently provides an EPA estimated 17 city/25 highway mpg. It applies some of the most advanced automotive engine technology available today for an exceptional blend of high torque, fuel efficiency, low emissions, and first-rate noise, vibration, and harshness control. No wonder this powerplant has been named one of *Ward's* 10 Best Engines for 2011.

283^{HP}

THE ONLY MINIVAN IN ITS CLASS WITH THE FUEL ECONOMIZER FEATURE.⁽²⁾

From components to cabin appointments, this is a vehicle that's been thoroughly thought out. The Pentastar® engine boasts durability-enhancing features, like an advanced oil-filter system that features an incinerable filter element. The engine is also Flex Fuel capable, allowing for the option of using either gasoline or ethanol (E85) fuel. Town & Country's overall ride is further enhanced by new suspension tuning and a more efficient and easier-to-operate shifter. It's the only minivan in its class⁽²⁾ with the Fuel Economizer feature that alters transmission shift patterns to help improve real-world fuel efficiency.⁽³⁾ The updated and integrated instrument panel includes the largest vehicle information screen in its class.⁽²⁾ Its unified look includes touches of chrome around the HVAC controls, shifter, and gauge cluster rings. The gauges are also positioned for easier viewing and the new steering wheel houses cruise and audio controls.



TOWN & COUNTRY HAS THE MOST CONCEALED STORAGE SPACE IN ITS CLASS.⁽²⁾ With the exclusive Stow 'n Go® seating, which offers a best-in-class⁽²⁾ storage system, an exclusive tailgate seating option,⁽²⁾ and available exclusive one-touch power-folding third-row seats,⁽²⁾ distances traveled have more possibilities than ever.

THE MOST INNOVATIVE MINIVAN IN ITS CLASS.⁽²⁾

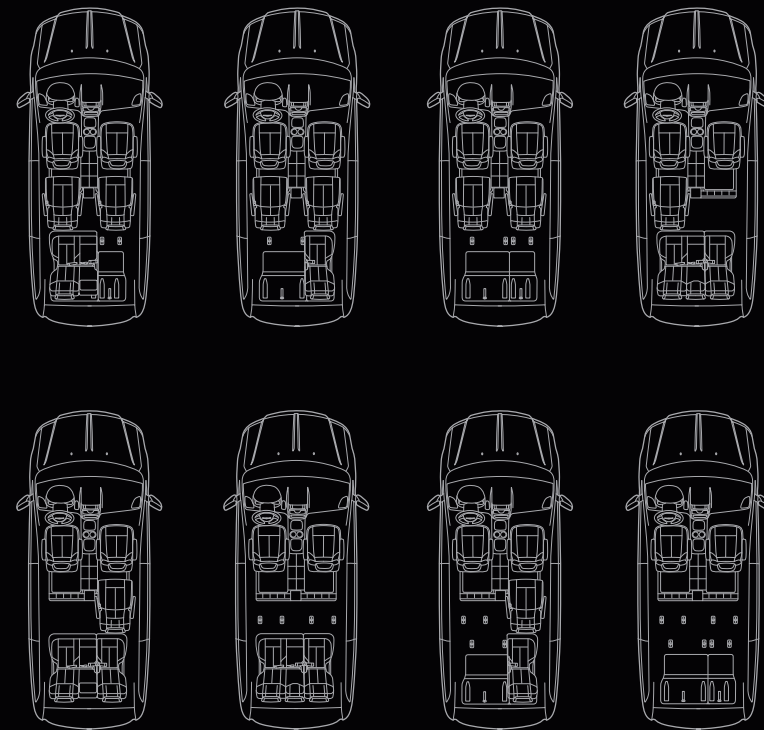


SOFT-TOUCH SURFACES AND CHROME ACCENTS ARE INTUITIVELY PLACED FOR DRIVER AND PASSENGERS

EVERY DETAIL IS DESIGNED WITH PURPOSE.

Town & Country Limited stands as the most luxurious minivan⁽²⁾ with standard features such as Nappa leather-trimmed seating throughout the cabin, a class-exclusive heated steering wheel,⁽²⁾ eight-way power driver and front-passenger seats, heated front and second-row seats, seating for seven, and available luxury second-row seats (late availability) — most of which are also available on Touring and Touring-L. The 2011 Town & Country now offers an available Super Console which features a large driver-accessible storage area, and another large storage drawer is accessible by both first- and second-row passengers. Both areas can be covered with a sliding door to keep travel items out of sight. Two power outlets, perfect for charging media devices, are within easy reach of the driver. The console's four cup holders include two cup holders that can hold 12-oz cans or 1-liter bottles. The standard Three-Zone Automatic Temperature Control (ATC) system keeps everyone comfortable via its electronic thermostats. The push of a button activates the available heated steering wheel.

HANDLES ALL CARGO WITH CARE.



ENGINEERED TO CONFIGURE OVER 140 WAYS

THE MOST INNOVATIVE SEATING AND STORAGE IN ITS CLASS⁽²⁾

Luxury need not come at the expense of practicality. With all seats stowed, the Town & Country yields a flat cargo floor and 144.2 cubic feet of storage for easy loading without ever having to remove a seat. When the seats are in their upright position, in-floor bins store a multitude of items from laptops and purses to toys, backpacks, sleeping bags, and shopping bags. The available premium Super Console provides power outlets, cup holders, covered storage, and more to both first- and second-row passengers. The 2011 Town & Country also introduces the class-exclusive⁽²⁾ Stow 'n Place™ roof-rack system, with the convenience of crossbars that attach to the side rails when not in use.

KEYLESS ENTER 'N GO. The personalized key fob enables passive vehicle entry. With the fob in a pocket or purse, doors automatically unlock as you approach the vehicle. This available system allows quick access without fumbling for the key.

CHILD PROTECTION REAR DOOR LOCKS. A small lever on the front edge of the sliding door disables the rear doors' inside release handles.

SECURITY ALARM. This system monitors the door-ajar switches as well as the ignition circuit for unauthorized entry. The lights flash and the horn sounds, alerting you if someone else is trying to enter your vehicle.

REMOTE KEYLESS ENTRY. The power sliding doors and power liftgate allow you to slide open rear doors and open the liftgate, all with the touch of just a couple of buttons on the key fob, overhead console or inside the cabin.



TOWN & COUNTRY IS THE ONLY PREMIUM MINIVAN WITH STANDARD POWER SLIDING DOORS AND POWER LIFTGATE.⁽²⁾

EXCLUSIVE STANDARD DUAL POWER SLIDING DOORS.⁽²⁾ With the push of a button, in cabin or on key fob, the dual sliding doors effortlessly open. These power doors detect obstacles in their path to automatically halt their motion and reverse.⁽⁴⁾

POWER LIFTGATE WITH OBSTACLE DETECTION.⁽⁴⁾ Like the sliding doors, the power liftgate detects most obstacles in its path and will automatically stop and reverse.

POWER ADJUSTABLE PEDALS. Adjustable brake and accelerator pedals allow you to customize the position, enabling the driver to maintain a comfortable distance from the steering wheel. The memory function on Limited customizes each fob's position setting.

DOOR ALERT. This selectable feature automatically flashes signal lights, indicating which sliding door is open.

EXCLUSIVE STOW 'N GO.^{® (2)}



ONE MOTION. A new, simple, fold-and-stow system now allows the head restraint to fold down automatically for easier operation and reveals what makes Town & Country legendary: exclusive Stow 'n Go⁽²⁾ seating with in-floor storage bins and fold-in-floor second- and third-row seats. When the seats are in their upright position, in-floor bins are available to accommodate carry-ons.

THIRD-ROW POWER SEATS.



EXCLUSIVE ONE-TOUCH POWER-FOLDING THIRD-ROW SEATS.⁽²⁾ With the touch of a button the available class-exclusive one-touch power-folding third-row 60/40 split-bench seat⁽²⁾ folds directly into the floor. This feature also includes obstacle detection⁽⁴⁾ to automatically pause if something is detected within the seat's path of motion.

ITS LEVEL OF CARE IS RIVALED ONLY BY ITS ABUNDANCE OF FEATURES.

Sleek, stylish, and packed with innovation. Town & Country is foremost for drivers who expect a high standard of ease, flexibility, and safety and technology features. The fact that it has all the luxury, style, and performance of a modern, sporty vehicle is more than just a bonus. The 2011 Town & Country features new body styling, including reshaped front and rear fascias, rear liftgate, a sculpted hood, fog lamps, taillamps with LED lighting, body-color rear spoiler, and more. The available dual High Intensity Discharge (HID) SmartBeam™ headlamps automatically switch from high- to low-beam and back again when oncoming headlamps or forward lighting elements are sensed. This makes nighttime driving safer by providing the maximum amount of light possible for any driving scenario. The Town & Country architecture also boasts the most Quiet Steel® technology in its class.⁽²⁾ This leading-edge noise- and vibration-reducing steel, along with other design cues, works to dampen extensive noise, vibration, and harshness (NVH) levels. With new wheels, a re-engineered suspension system, and the all-new six-speed transmission, getting there is just as enjoyable as your arrival. It's just the latest chapter to the story of why Town & Country is America's favorite minivan.⁽¹⁾



THEY ARE THE FUTURE
OF OUR COUNTRY.
THEY SHOULD BE
TREATED AS SUCH.



SMARTBEAM™ HEADLAMPS / FRONT- AND SECOND-ROW HEIGHT-ADJUSTABLE SEAT BELTS / BELT ALERT / BLIND SPOT MONITORING⁽⁵⁾ / REAR CROSS PATH DETECTION SYSTEM⁽⁶⁾ / PARKVIEW® REAR BACK-UP CAMERA⁽⁶⁾ / PARKSENSE® REAR PARK ASSIST SYSTEM⁽⁶⁾ / RAIN-SENSING WIPERS / 4-WHEEL ANTILOCK BRAKES / ALL-SPEED TRACTION CONTROL / ELECTRONIC STABILITY CONTROL⁽⁷⁾ (ESC) / ELECTRONIC BRAKE ASSIST / POWER SLIDING DOORS WITH OBSTACLE DETECTION⁽⁴⁾ / POWER LIFTGATE WITH OBSTACLE DETECTION⁽⁴⁾ / FRONT-PASSENGER KNEE BOLSTER / PREMIUM TIRE PRESSURE MONITORING DISPLAY / INTERIOR HEAD-IMPACT PROTECTION / ADVANCED MULTISTAGE AIR BAGS⁽⁸⁾ / FRONT SEAT-MOUNTED SIDE AIR BAGS⁽⁸⁾ / BRAKE-PARK INTERLOCK / POWER ADJUSTABLE PEDALS

42

SAFETY AND TECHNOLOGY FEATURES AND OUR CARE
FOR FUTURE GENERATIONS COME STANDARD.

This comprehensive list includes the class-exclusive⁽²⁾ SafetyTec™ Package. It bundles some of the most technologically advanced safety and security features among the over forty ways to show we care for you and yours. Because you and your passengers are all unique, it makes sense that your Town & Country is in a class by itself. We call it SafetyTec. You'll call it peace of mind.

ENHANCED ACCIDENT RESPONSE SYSTEM (EARS) / LOWER ANCHORS AND TETHERS FOR CHILD SEATS (LATCH) / FRONT-SEAT ACTIVE HEAD RESTRAINTS⁽⁹⁾ / SEAT BELT PRETENSIONERS / SENTRY KEY® ENGINE IMMOBILIZER / SUPPLEMENTAL SIDE-CURTAIN AIR BAGS⁽⁸⁾ / THREE-POINT SEAT BELTS AT ALL SEATING POSITIONS / REMOTE KEYLESS ENTRY / CHILD PROTECTION REAR DOOR LOCKS / CONSTANT FORCE RETRACTORS / OBSERVATION MIRROR / ENERGY-ABSORBING STEERING COLUMN / DRIVER INFLATABLE KNEE-BLOCKER AIR BAG / AUTOMATIC HEADLAMPS / DRIVER'S DOOR PROTECTION BLOCK / SECOND- AND THIRD-ROW HEAD RESTRAINTS / HOMELINK® UNIVERSAL GARAGE DOOR OPENER / HEADLAMPS-OFF TIME DELAY / DOOR ALERT / STEERING WHEEL-MOUNTED VEHICLE CONTROLS / TILT-TELESCOPING STEERING COLUMN

SUPPLEMENTAL SIDE-CURTAIN AIR BAGS.⁽⁸⁾
These air bags extend protection to all outboard front- and rear-seat passengers, including third-row outboard passengers. Upon side impact, the system deploys the specific side air bag and curtain required for occupant protection.

ADVANCED MULTISTAGE FRONT AIR BAGS.⁽⁸⁾
This feature regulates the amount of force necessary for the front occupants by impact severity, including low-risk deployment.

FRONT SEAT-MOUNTED SIDE AIR BAGS.⁽⁸⁾
Additional air bags are integrated into the front seats, so no matter where they are positioned, the air bags deploy consistently with driver and front-passenger seat positions.

TIRE PRESSURE MONITORING SYSTEM.
Individual tire-pressure amounts are displayed in the instrument cluster and alert the driver to tires with high or low pressure.



CONSTANT FORCE RETRACTORS. Seat belt retractors sense vehicle impact and immediately apply pressure to the seat belt to properly position the occupant before the full load of impact is imparted, then reduces the seat belt load in order to moderate forces during the impact event.

DRIVER INFLATABLE KNEE-BLOCKER.⁽⁸⁾
This separate air bag located in the lower instrument panel is designed to help position the driver properly for the front air bag.

ACTIVE FRONT-ROW HEAD RESTRAINTS.⁽⁹⁾
In the event of a rear-end collision, these restraints automatically move forward and upward to decrease the space between the head restraint and the occupant's head.

ENHANCED ACCIDENT RESPONSE SYSTEM (EARS). This system makes it easier for emergency personnel to see and reach occupants in the event of an accident by turning on interior lighting, flashing hazard lamps, and unlocking doors after air bag deployment. It also shuts off the flow of fuel to the engine.



TOWN & COUNTRY IS THE ONLY MINIVAN IN ITS CLASS⁽²⁾ TO OFFER REAR CROSS PATH DETECTION.⁽⁶⁾

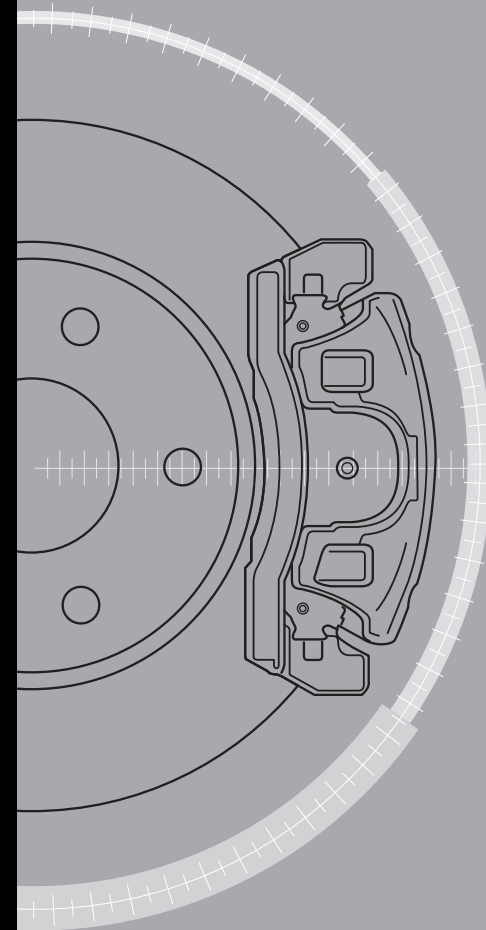
Difficult-to-view side-vehicle zones are monitored by the radar technology of **BLIND SPOT MONITORING (BSM)**,⁽⁵⁾ which alerts you of possible proximity danger as you drive. While traveling in forward gears, driver will see an illuminated icon appear in the sideview mirror or hear an audible warning sound (if activated) when another vehicle is beside them. BSM is included as part of the standard SafetyTec™ Package and includes the class-exclusive⁽²⁾ Rear Cross Path Detection,⁽⁶⁾ which alerts the driver to most approaching low-speed vehicles when backing out of parking spots and activates any time the vehicle is in Reverse.



BUILT WITH
TECHNOLOGY THAT
PUTS BLIND SPOTS
ON WARNING.



ACTIVE FRONT HEAD RESTRAINTS.⁽⁹⁾ These help to reduce injury in a rear collision by minimizing the space between the head restraint and the occupant's head.



ELECTRONIC STABILITY CONTROL (ESC).⁽⁷⁾

Besides delivering a level of computer-enhanced control, these systems include all-speed traction control and electronic Brake Assist to automatically help provide quicker braking power in emergency situations. They can apply strategic braking to appropriate wheels and reduce engine power when overly sharp steering actions are detected.

ALL-SPEED TRACTION CONTROL. By applying individual brakes separately or in combination with engine torque limitation, all-speed traction control helps prevent wheel slip.

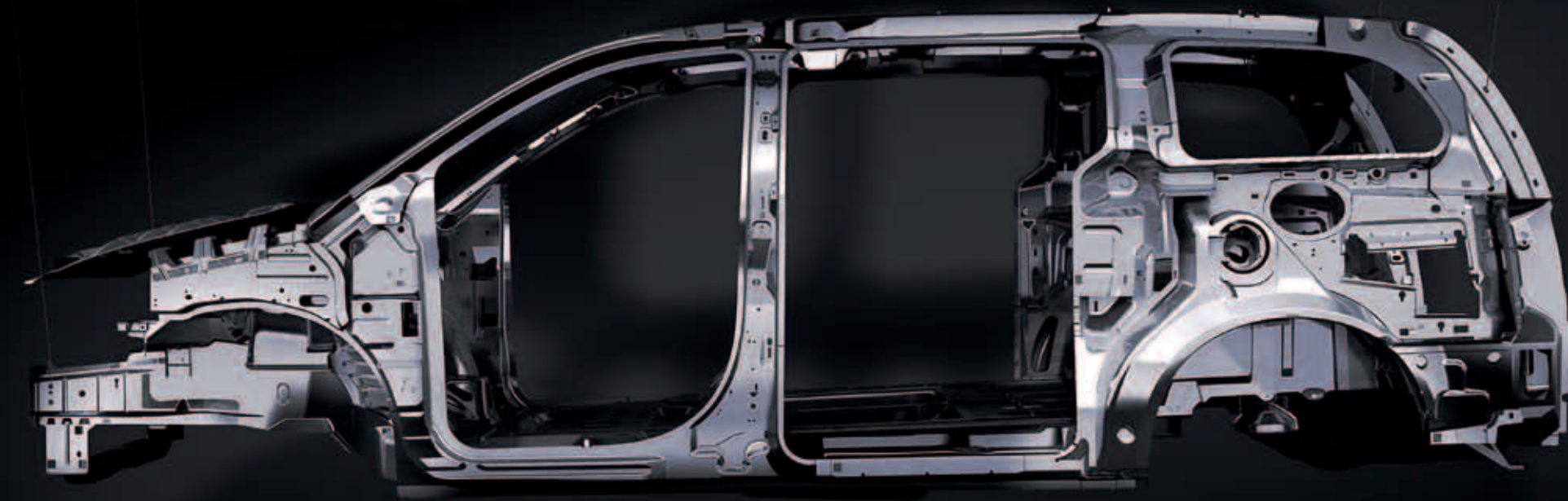
ELECTRONIC BRAKE ASSIST. In a panic-brake condition, the system applies maximum braking power, providing the shortest possible stopping distance.

4-WHEEL ANTILOCK BRAKE SYSTEM (ABS). Standard four-wheel antilock disc brakes afford premium stopping power, thanks to state-of-the-art electronics that help provide faster system response. ABS senses and helps to prevent wheel lockup, offering improved steering control under extreme braking and/or slippery conditions.

TOWN & COUNTRY

STRATEGICALLY PLACED HIGH-STRENGTH STEEL. The Town & Country architecture includes dual phase, high-strength and hot-stamped steel, resulting in a strong safety cage that contributes to overall vehicle-impact performance.

CRUMPLE ZONES. In the event of an impact, specifically designed front and rear crush zones absorb energy and redirect it away from passengers, helping to reduce the risk of injury.



IS THE MOST TRUSTED MINIVAN EVER.⁽¹⁰⁾



IT'S ALWAYS ON THE LOOKOUT

PARKVIEW® REAR BACK-UP CAMERA.⁽⁶⁾ This standard system displays an accurate visual reference through your Uconnect® Media Center screen of what is behind your vehicle when driving in Reverse. It includes new on-screen static guidelines to help orientate the driver while backing up.

REAR CROSS PATH DETECTION.⁽⁶⁾ Town & Country is the only minivan in its class⁽²⁾ to offer this feature, which is included as part of the standard SafetyTec™ Package. It alerts the driver to most approaching low-speed vehicles when backing out of parking spots.

PARKSENSE® REAR PARK ASSIST.⁽⁶⁾ This included feature uses radar technology to detect most obstacles behind the vehicle and gives the driver both visual and audible alerts about those obstacles.

THE PURPOSE OF OUR GENIUS IS TO MAKE IT LOOK EASY.

A CONCIERGE OF MODERN MEDIA THAT CONNECTS YOU TO THE PEOPLE, MUSIC, AND DEVICES THAT MATTER MOST.

Uconnect® is an intuitive hub for all your media — cell phone, internet, satellite radio, navigation system, and MP3 player. The sole purpose of these user-friendly systems is to make your life easier, wherever your travels take you.



PHONE. Talking on the phone while driving has never been easier — or more responsible. Uconnect Phone is the in-vehicle, voice-activated communication system that allows you to pair up to seven Bluetooth® compatible phones and then talk virtually hands-free. This system is also clever enough to synchronize with your phone's address book⁽¹¹⁾ — up to 1,000 entries — every time you get into your vehicle.



VOICE COMMAND. It simplifies driving by letting you keep your eyes on the road and your hands on the wheel. Vocally select AM/FM radio stations, SIRIUS® Satellite Radio⁽¹²⁾ channels and make and receive calls. This smart system technology can also be trained to better recognize your voice and can understand commands in English, French, and Spanish.



WEB. Put the power of high-speed Internet in your vehicle with Uconnect Web.⁽¹³⁾ Effortlessly connect any WiFi-enabled device to the Internet at 3G broadband speeds making your vehicle a mobile Hotspot. Passengers can use multiple devices at the same time. There's no need for cell cards or software with this unique Authentic Accessory by Mopar. It's all wireless. Subscription required. Sold separately.



ENTERTAINMENT. Manage all of your media. You'll have six ways to access audio, including SIRIUS Satellite Radio⁽¹²⁾ (your first year of service is included), and iPod® Control with Voice Command, auxiliary jack, SD card slot, and Bluetooth streaming audio. Rear Seat Video can be accessed three ways: DVDs, compatible multimedia devices, and gaming consoles.



NAVIGATION. Provides turn-by-turn voice guidance and visual display. It can also locate nearby restaurants, shopping, hospitals, or points of local interest. Add SIRIUS Traffic^{TM(12)} for real-time traffic updates, including accident alerts, road closings, and traffic flow. Your first year of SIRIUS Traffic⁽¹²⁾ service is included.

SIRIUS TRAVEL LINK.^{TM(12)} Brings a wealth of useful information to your fingertips, including national weather information for current and forecasted weather, fuel prices at local gas stations, sports scores for in-game and final scores, as well as local movie theater schedules.





BEST-IN-CLASS FAMILY ENTERTAINMENT SYSTEM.⁽²⁾

KIDS WEREN'T PUT IN THIS WORLD TO MAKE US MORE COMFORTABLE.
DROP-DOWN DVD SCREENS WERE.

Leave it to Town & Country to deliver a premium level of entertainment features. With two available nine-inch DVD screens that flip down from the overhead console and the available SIRIUS Backseat TV, ^{TM (12)} game-console inputs, and two available DVD players, the kids don't have to settle on just one thing to watch. The video system can be operated from either the rear-seat entertainment unit or the radio head unit. The self-contained entertainment system is located in the overhead rail, which also contains storage for the DVD wireless remote and wireless headphones. LED halo lighting glows from the headliner rail, providing a relaxing environment for passengers. SIRIUS[®] Satellite Radio⁽¹²⁾ is standard on all models.

Whether listening to music, DVDs, or television shows,⁽¹²⁾ you'll appreciate the designed-in sound of either a standard six-speaker system or the available nine well-placed speakers with an 11-channel amplifier. The ∞Infinity[®] nine-speaker system with subwoofer gives superb quality surround sound with 506 watts of power and is standard on Limited.



STANDARD AND OPTIONAL FEATURES

TRIM LEVELS	TOURING	TOURING-L	LIMITED
ENGINE/TRANSAXLE			
3.6L PENTASTAR® VVT V6 FLEX FUEL WITH 6-SPEED AUTOMATIC	29K	29J	29X
MECHANICAL			
ALTERNATOR – 160-amp	S	S	S
BATTERY – 700-amp maintenance-free	S	S	S
BRAKE ASSIST – Electronic	S	S	S
BRAKE-PARK INTERLOCK	S	S	S
BRAKES – 4-wheel antilock with vented front and solid rear discs	S	S	S
ENGINE BLOCK HEATER	O	O	O
ENGINE OIL COOLER	S	S	S
DEFROSTER – Rear window	S	S	S
FUEL TANK – 20-gallon with tethered cap	S	S	S
HEAVY-DUTY ENGINE COOLING – Includes engine oil cooler, heavy-duty transmission and heavy-duty radiator (included with Trailer Tow Group)	P	P	P
SPEED CONTROL – Electronic with steering wheel-mounted controls	S	S	S
SUSPENSION – Touring-tuned, front independent MacPherson struts and rear twist-beam axle with coil springs	S	S	S
– Load-leveling and height-control (included with Trailer Tow Group)	O/P	O/P	O/P
TIP START – Quiet start, prevents double starts	S	S	S
EXTERIOR FEATURES			
BELT MOLDING – Bright	S	S	S
DOOR HANDLES – Body-color	S	S	–
– Bright (included with Remote Proximity Keyless Entry)	P	P	S
DOOR LOCKS – Power	S	S	S
DOORS – Passenger-side power sliding	S	S	S
– Driver-side power sliding	S	S	S
FASCIA – Body-color front and rear with rear scuff pad	S	S	S

TRIM LEVELS	TOURING	TOURING-L	LIMITED
EXTERIOR FEATURES (continued)			
FOG LAMPS – Premium	S	S	S
GLASS – Sunscreen	S	S	S
GRILLE – Bright	S	S	S
HEADLAMPS – Quad halogen with headlamps-off time delay	S	S	–
– Automatic	S	S	S
– Dual High Intensity Discharge with headlamps-off time delay	–	–	S
– SmartBeam™	S	S	S
LIFTGATE – Power	S	S	S
MIRRORS – Body-color, power, folding, heated	S	–	–
– Power, chrome, folding, heated, with supplemental signals and driver-side auto-dimming exterior mirror (Limited includes memory feature)	–	S	S
MOLDING – Bodyside, bright	S	S	S
ROOF RACK – Black side rails	S	S	–
– Brushed chrome side rails with Black end caps	–	–	S
– Stow ’n Place™ crossbars	S	S	S
SILL APPLIQUÉ – Body-color	S	S	S
SUNROOF – Power, includes dual rear mini overhead consoles with two bins (replaces overhead console and sunglasses bin)	–	O	O
TIRES – P235/60R16 BSW All-Season	S	–	–
– P225/65R17 BSW All-Season Touring	–	S	S
– Compact spare tire	S	S	S
WHEELS – 16-inch painted aluminum wheels	S	–	–
– 17-inch painted aluminum wheels	–	S	–
– 17-inch painted aluminum wheels (late availability)	–	O	–
– 17-inch PVD-finish aluminum wheels	–	–	S
WINDOWS – Power front one-touch up/down driver’s side and one-touch down front passenger with power second row	S	S	S
– Power rear-quarter vents	S	S	S

TRIM LEVELS	TOURING	TOURING-L	LIMITED
EXTERIOR FEATURES (continued)			
WINDSHIELD WIPERS – Front, variable intermittent	S	S	S
– Front, rain-sensitive	S	S	S
– Rear window wiper/washer	S	S	S
INTERIOR FEATURES			
AIR CONDITIONING – Three-Zone Automatic Temperature Control with particulate air filter	S	S	S
ASSIST HANDLES – Front passenger, mounted on A-pillar; 2nd row, mounted in headliner and on B-pillar	S	S	S
CARPETS – Floor and cargo area	S	S	–
– 18-ounce floor and cargo area	–	–	S
CLOCK – Analog	S	S	S
CONSOLE – Overhead, with interior observation mirror, sunglasses bin, LED lamps and switches for power doors and liftgate	S	S	S
– Single rear overhead console system includes four storage bins, 2nd- and 3rd-row swivel LED lamps, halo light ring (replaced by dual mini overhead console if sunroof is ordered; if ordered, video screens will delete storage bins)	S	S	S
FLOOR MATS – Easy-clean mats	S	S	S
FLOOR SILENCER – Rear	S	S	S
GARAGE DOOR OPENER – Programmable, three-function with remote controls for garage door openers, interior/exterior home lighting, or security devices	S	S	S
GLOVE BOX – Dual	S	S	S
GROCERY BAG HOOKS – Rear 3rd-row seatback	S	S	S
LIGHTING – Overhead ambient surround lighting	S	S	S
– Rear swiveling reading/courtesy	S	S	S
– Door courtesy	S	S	S
– Portable rechargeable trouble light	S	S	S
– Liftgate, single floodlamp	S	S	S
– LED, located in overhead that illuminates the front center cup holder and console	S	S	S
– Illuminated front door storage	S	S	S

TRIM LEVELS	TOURING	TOURING-L	LIMITED
INTERIOR FEATURES (continued)			
MIRRORS – Rearview, automatic-dimming	S	S	–
– Rearview, automatic-dimming with integrated microphone for Uconnect® Phone (included with Uconnect Voice Command)	P	P	S
– Illuminated visor vanity	S	S	S
POWER OUTLET – 12V DC located in instrument panel and rear-quarter trim panel	S	S	S
– Auxiliary, 12V in instrument panel	S	S	S
– Auxiliary, 115V inverter with auxiliary outlets in front of driver-side-quarter trim panel	S	S	S
REMOTE START SYSTEM – Included with Security Group	P	S	S
SHADES – Second- and third-row retractable window (included with Passenger’s Convenience Group)	P	S	S
SHIFT KNOB – Leather-wrapped	S	S	S
STEERING COLUMN – Tilt, telescoping, manual	S	S	S
STEERING WHEEL – Leather-wrapped	S	S	S
– Steering wheel-mounted audio controls	S	S	S
– Heated (included with Driver Convenience Group)	P	P	S
STORAGE – Open bin in lower instrument panel, driver door sill bin and left rear-quarter trim bin (rear bin not available on Limited)	S	S	S
– Premium, removable, sliding floor console with cup holders and power outlet can be adjusted for second-row passenger use	S	S	O
– Super Console integrated center console with covered storage bins, cup holders for first- and second-row, large storage drawer and two power outlets	–	–	S
VEHICLE INFORMATION CENTER – Displays in instrument panel, controls on steering wheel	S	S	S
SEATING			
FABRIC – Premium cloth	S	–	–
– Leather-trimmed first- and second-row	–	S	–
– Luxury Nappa leather-trimmed first- and second-row with suede microfiber accents	–	–	S
FRONT – Eight-way power driver’s seat, includes two-way power lumbar adjustment	S	–	–

TRIM LEVELS	TOURING	TOURING-L	LIMITED
SEATING (continued)			
FRONT (continued) — Eight-way power driver's seat and eight-way front-passenger seat, includes two-way power lumbar adjustment for driver's seat (Limited includes driver's seat memory feature)	—	S	S
— Heated front-row seats (included in Driver Convenience Group)	P	S	S
REAR — Heated second-row seats (included in Passenger's Convenience Group on Touring, Driver Convenience Group on Touring-L)	P	P	S
— Stow 'n Go® Seating and Storage System with fold-in-floor intermediate bucket seats and rear 60/40 split-folding bench with fold-in-floor and tailgate position features	S	S	S
— Intermediate luxury buckets with rear fold-in-floor seating (late availability)	—	O	O
— Power one-touch folding third-row seat with power recline	—	O	O
UCONNECT® MULTIMEDIA			
— Media Center 430 CD/DVD/MP3/HDD radio with 6.5-inch touch screen, 30GB hard drive (approximately 6,700 song capacity), Gracenote MusicID,® and auxiliary jack	S	S	—
— Media Center 430N CD/DVD/MP3/HDD radio with 6.5-inch touch screen, Garmin® Navigation, 30GB hard drive (approximately 4,250 song capacity), Gracenote MusicID, auxiliary jack, and ParkView® Rear Back-Up Camera ⁽⁶⁾	O	O	S
— Media Center 730N CD/DVD/MP3/HDD radio with 6.5-inch touch screen, GPS Navigation, 30GB hard drive (approximately 4,250 song capacity), SIRIUS® Satellite Radio, ⁽¹²⁾ SIRIUS Traffic, ^{TM (12)} SIRIUS Travel Link, ^{TM (12)} Gracenote MusicID, iPod® Control, auxiliary jack, Bluetooth® streaming audio, hands-free phone, Voice Command of radio, navigation, music and memo record, and ParkView Rear Back-Up Camera ⁽⁶⁾	O	O	O
— SIRIUS Backseat TV ^{TM (12)} — Includes one-year subscription (requires Entertainment Group #2 on Touring-L)	—	O	S
— SIRIUS Satellite Radio ⁽¹²⁾ — Includes one-year subscription	S	S	S
— Radio memory feature	—	—	S
SPEAKERS — Six speakers	S	S	—
— Nine amplified speakers with subwoofer, includes 506-watt amplifier	—	—	S
VIDEO SCREEN — Second-row nine-inch screen (included with Entertainment Group #1)	P	—	—
— Second- and third-row nine-inch screens (included with Entertainment Group #2)	—	P	S
SAFETY AND SECURITY			
ACTIVE HEAD RESTRAINTS⁽⁹⁾ — Front-row seats	S	S	S
AIR BAGS⁽⁸⁾ — Advanced multistage driver and front-passenger, includes low-risk deployment	S	S	S
— Front-seat mounted side	S	S	S

TRIM LEVELS	TOURING	TOURING-L	LIMITED
SAFETY AND SECURITY (continued)			
BLIND SPOT MONITORING⁽⁵⁾ — Includes Rear Cross Path Detection ⁽⁶⁾ system	S	S	S
CHILD SEAT ANCHOR SYSTEM (LATCH) — Mounts for two child seats in the second row help ease the installation of compatible aftermarket child seats	S	S	S
DRIVER'S INFLATABLE KNEE BLOCKER⁽⁸⁾	S	S	S
DRIVER DOOR PROTECTION BLOCK — Prevents driver's side sliding door from opening while fuel filler door is open	S	S	S
ELECTRONIC STABILITY CONTROL⁽⁷⁾ — Includes Brake Assist and all-speed traction control	S	S	S
KEYLESS ENTER-N-GO — Includes bright door handles	O	O	S
PARKSENSE® REAR PARK ASSIST SYSTEM⁽⁶⁾	S	S	S
PARKVIEW® REAR BACK-UP CAMERA⁽⁶⁾	S	S	S
PEDALS — Power adjustable (Limited includes memory feature)	S	S	S
REMOTE KEYLESS/ILLUMINATED ENTRY SYSTEM — Includes two transmitters, Sentry Key® anti theft engine immobilizer, headlamps-off time delay	S	S	—
SECURITY ALARM —Included with Security Group	P	S	S
SLIDING DOOR ALERT SYSTEM — Hazard lamps flash when sliding door is in operation, signaling other drivers that passengers could be entering/exiting the vehicle	S	S	S
TIRE PRESSURE MONITORING DISPLAY — Displays tire pressure for each tire individually	S	S	S
UCONNECT® PHONE — Includes auto-dimming rearview mirror with microphone and USB port interface (included in Driver Convenience Group and Media Center 730N radio)	P	P	S
PACKAGES			
DRIVER CONVENIENCE GROUP — Includes heated steering wheel, heated front seats (Touring only), heated second-row seats (Touring-L only), and Uconnect Voice Command	O	O	—
ENTERTAINMENT GROUP #1 — Includes second-row overhead nine-inch video screen and DVD console, wireless headphones, and video remote control, and 115V power outlet	O	—	—
ENTERTAINMENT GROUP #2 — Includes second-row overhead nine-inch video screen and DVD console, third-row overhead nine-inch video screen, wireless headphones, and video remote control	—	O	—
ENTERTAINMENT GROUP #3 — Includes second-row overhead nine-inch video screen and DVD console, third-row overhead nine-inch video screen, wireless headphones, video remote control, and SIRIUS Backseat TV ^{TM (12)}	—	—	S
PASSENGER'S CONVENIENCE GROUP — Includes second- and third-row retractable window shades and heated second-row seats (requires Driver Convenience Group)	O	—	—
SAFETYTEC™ PACKAGE — Includes rain-sensitive windshield wipers, SmartBeam TM headlamps, Tire Pressure Monitoring Display, ParkSense Rear Park Assist, ⁽⁵⁾ Blind Spot Monitoring ⁽⁵⁾ and Rear Cross Path Detection ⁽⁶⁾	S	S	S

TRIM LEVELS	TOURING	TOURING-L	LIMITED
PACKAGES (continued)			
SECURITY GROUP — Includes security alarm and remote start system	O	—	—
TRAILER TOW GROUP — Includes heavy-duty engine cooling, trailer tow wiring harness, load-levelling suspension and Class II receiver hitch (hitch is late availability)	O	O	O
MOPAR FEATURES			
MOPAR RUNNING BOARDS — Requires Stone White, Deep Cherry Red Crystal Pearl, Bright Silver Metallic, or Brilliant Black Crystal Pearl paint	O	O	O
MOPAR UCONNECT™ WEB⁽¹³⁾	O	O	O
MOPAR EXTERIOR APPEARANCE GROUP — Includes Mopar Premium Floor Mats, Mopar Bright Door Sills, Mopar Body-Color Running Boards and Mopar Splash Guards (requires Stone White, Deep Cherry Red Crystal Pearl, Bright Silver Metallic, or Brilliant Black Crystal Pearl paint)	O	O	O



WARRANTIES

Chrysler vehicles are covered by a Chrysler Group LLC 3-Year or 36,000-Mile Basic Limited Warranty (excludes normal maintenance and wear items), as well as a 5-Year or 100,000-Mile Powertrain Limited Warranty that is fully transferable and includes towing to an authorized dealer. Ask your dealer for details and a copy of these limited warranties.

AUTHENTIC CHRYSLER ACCESSORIES BY MOPAR

Are designed specifically for your Chrysler vehicle for exceptional fit, finish and performance. Visit your dealership or mopar.com.

AUTOMOBILITY

Chrysler Group LLC's Automobility program provides aftermarket reimbursement incentives on adaptive vehicle upfit equipment in order to help provide safe and reliable vehicle modifications to enhance accessibility for all people. For more information, call (800) 255-9877 or visit chryslerautomobility.com.



This brochure is a publication of Chrysler Group LLC. All product illustrations and specifications are based upon current information at the time of publication approval. Chrysler Group LLC reserves the right to make changes from time to time, without notice or obligation, in prices, specifications, colors, materials and to change or discontinue models, which are considered necessary to the purpose of product improvement or for reasons of design and/or marketing. Chrysler, Mopar, ParkSense, ParkView, Pentastar, Sentry Key, Stow 'n Go, Town & Country and Uconnect are registered trademarks and SafetyTec and Stow 'n Place are trademarks of Chrysler Group LLC. Bluetooth is a registered trademark of Bluetooth SIG. Gracenote and MusicID are registered trademarks of Gracenote Inc. in the United States and/or other countries. HomeLink is a registered trademark owned by Johnson Controls, Inc. eInfinity is a registered trademark of Harman Industries, Inc. iPod is a registered trademark of Apple Inc. Katzkin is a registered trademark of Katzkin Leather Interiors, Inc. Quiet Steel is a registered trademark of Material Sciences Corporation. SIRIUS, XM and all related marks and logos are trademarks of SIRIUS XM Radio Inc. and its subsidiaries. SmartBeam is a trademark of Gentex Corporation.

⁽¹⁾Based on total minivan sales, January–October 2010. ⁽²⁾Based on Chrysler Group LLC Premium Minivan segment. ⁽³⁾EPA estimated 17 city/25 highway mpg. ⁽⁴⁾Detects most obstacles. As with all electronically controlled systems, care is advised. ⁽⁵⁾Always check visually for vehicles prior to changing lanes. ⁽⁶⁾Always check entire surroundings visually before backing up. ⁽⁷⁾No system, no matter how sophisticated, can repeal the laws of physics or overcome careless driving actions. Performance is limited by available traction, which snow, ice, and other conditions can affect. When the ESC warning lamp flashes, the driver needs to use less throttle and adapt speed and driving behavior to prevailing road conditions. Always drive carefully, consistent with conditions. Always wear your seat belt. ⁽⁸⁾The advanced front air bags in this vehicle are certified to the new U.S. federal regulations for advanced air bags. Children 12 years old and younger should always ride buckled up in a rear seat. Infants in rear-facing child restraints should never ride in the front seat of a vehicle with a passenger front air bag. All occupants should always wear their lap and shoulder belts properly. ⁽⁹⁾Always sit properly with the head restraint properly adjusted. Never place anything in front of the head restraint. ⁽¹⁰⁾Based on owner repurchase rates. ⁽¹¹⁾Phone must support Bluetooth Phone Book Access Profile (PBAP). ⁽¹²⁾Required SIRIUS Radio, Traffic, Travel Link, and Backseat TV subscriptions sold separately after trial period. Other fees and taxes will apply. SIRIUS Traffic and Travel Link available in select markets; Backseat TV subscription not available without SIRIUS Radio subscription; and SIRIUS data displays and individual product availability vary by hardware equipment. SIRIUS service available only to those at least 18 years of age in the 48 contiguous U.S.A., DC, and Puerto Rico (with coverage limitations), while Internet radio is also available in AK, HI, and PR. Fees and programming subject to change. Service automatically renews and you will be billed, at then-current rates, unless you call 1-888-539-7474 to cancel. Subscriptions governed by SIRIUS Terms and Conditions available at sirius.com. Service available in Canada; see www.siriuscanada.ca. ⁽¹³⁾Uconnect Web feature is not intended for use by the driver while the vehicle is in motion. Always drive carefully. Subscription required.

UCONNECT®

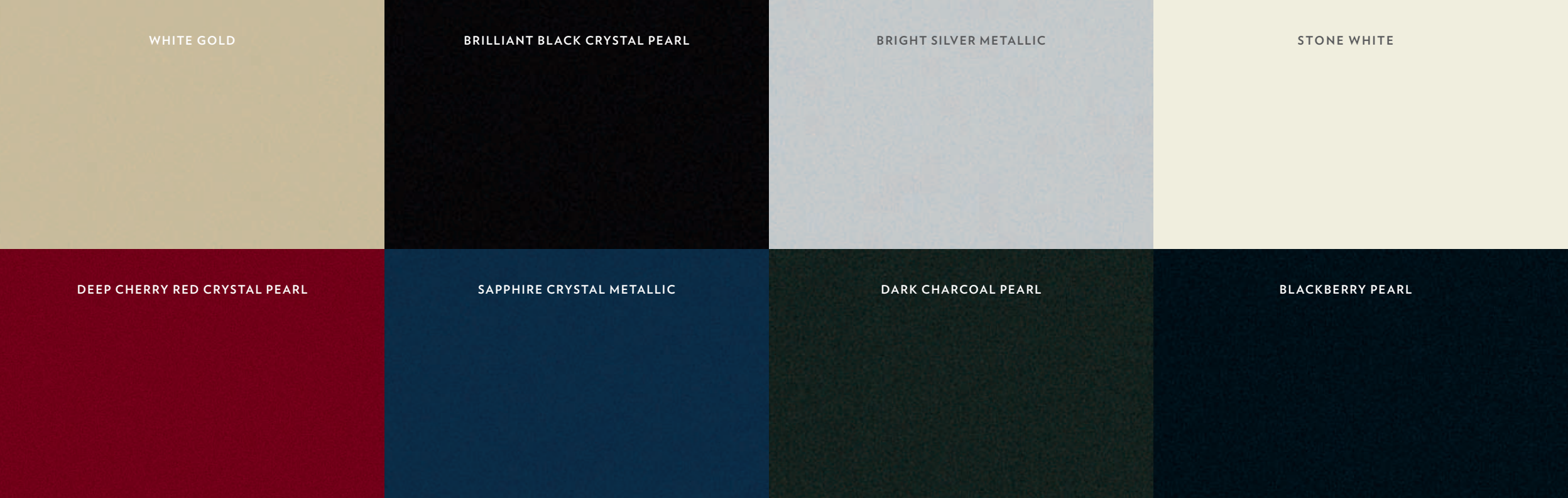
With Uconnect, you're always connected — to people, places, music, movies and the Internet.

SIRIUS® SATELLITE RADIO

SIRIUS® Satellite Radio delivers over 130 channels, including 100% commercial-free music, sports, news, talk, entertainment, traffic and weather. Factory-installed SIRIUS Satellite Radio includes a one-year subscription. For more information, go to sirius.com.

CHRYSLER SERVICE CONTRACTS

Chrysler Group LLC has a vested interest in your satisfaction and owner experience with your new Chrysler vehicle. Chrysler Group Service Contracts offer extended service plans to help ensure that you'll enjoy your vehicle for many years down the road — for just pennies a day. For more information on comprehensive vehicle coverage, see your Chrysler dealer, call (800) 442-2666, or visit chrysler.com/csc.

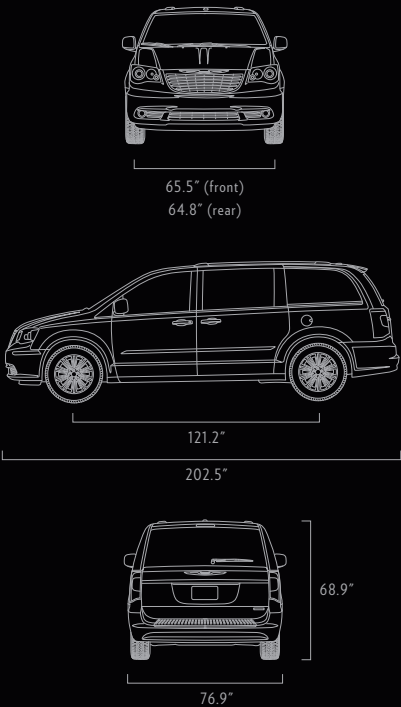


EXTERIOR COLORS ^

INTERIOR TRIM COLORS v



INTERIOR COMBINATION	TOURING			TOURING-L			LIMITED		
	Black/Light Graystone	Dark Frost Beige/Medium Frost Beige		Black/Light Graystone	Dark Frost Beige/Medium Frost Beige		Black/Light Graystone	Dark Frost Beige/Medium Frost Beige	
SEAT COLOR	Black Cloth	Light Graystone Cloth	Medium Frost Beige Cloth	Black Leather Trim	Light Graystone Leather Trim	Medium Frost Beige Leather Trim	Black Nappa Leather Trim with Suede Microfiber Inserts	Light Graystone Nappa Leather Trim with Suede Microfiber Inserts	Medium Frost Beige Nappa Leather Trim with Suede Microfiber Inserts
EXTERIOR COLORS									
BLACKBERRY PEARL	X	X	X	X	X	X	X	X	X
BRIGHT SILVER METALLIC	X	X		X	X		X	X	
BRILLIANT BLACK CRYSTAL PEARL	X	X	X	X	X	X	X	X	X
DARK CHARCOAL PEARL	X	X	X	X	X	X	X	X	X
DEEP CHERRY RED CRYSTAL PEARL	X	X	X	X	X	X	X	X	X
SAPPHIRE CRYSTAL METALLIC	X	X		X	X		X	X	
STONE WHITE	X	X	X	X	X	X	X	X	X
WHITE GOLD	X	X	X	X	X	X	X	X	X



WHEEL CHOICES





AUTHENTIC CHRYSLER ACCESSORIES

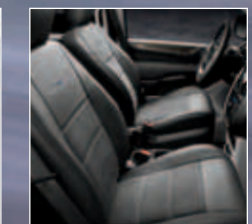


A MOVABLE DISPLAY OF INDIVIDUAL TASTE.

When your Town & Country is outfitted with Authentic Chrysler Accessories by Mopar, its impressive presence, versatility, and function are taken all the further. All Mopar parts are specifically designed to enhance your vehicle, personalizing its style while turning lifestyle possibilities into realities. SHOWN ON VEHICLE: Sport Utility Bars, Roof Box Cargo Carrier, Molded Running Boards, Front Air Deflector, and Chromed Billet Aluminum Grille Insert. For the full line of Authentic Chrysler Accessories by Mopar, visit mopar.com.



17-inch Chrome-Clad Wheel



Katzkin Leather Interiors

CHRYSLER



1800 CHRYSLER CHRYSLER.COM

CHRYSLER IS A REGISTERED TRADEMARK OF CHRYSLER GROUP LLC.

74-383-2134