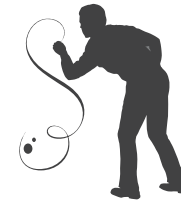


09 CHRYSLER ASPEN



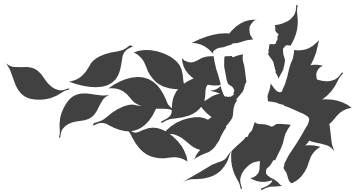


Aspen Hybrid in Brilliant Black Crystal Pearl.



DESIGN

Front to rear, Aspen is refined and distinctive.
Broad grille. Sculpted hood. Chrome accents.
Elegant interior appointments. It was designed to
transport up to eight in high style and comfort.
Engineered to cleverly combine fuel efficiency
and real SUV capability. Along the way, Aspen
makes an impression at every turn.



PERFORMANCE

A new Two-Mode Aspen Hybrid model delivers the uncommon combination of fuel efficiency⁽¹⁾ and SUV capability. There's also cutting-edge engine technologies like the fuel-saving 5.7-liter Variable Valve Timing (VVT) HEMI® V8 with Multi-Displacement System (MDS),⁽²⁾ and an E85-compatible 4.7-liter Flex Fuel V8. Best-in-class⁽³⁾ towing, exceptional horsepower, and torque help write another chapter of Aspen's impressive performance story.

⁽¹⁾Based on manufacturer's fuel economy of 19 city/20 hwy using EPA methodology.

⁽²⁾Based on manufacturer's preliminary 4x2 fuel economy numbers of 5.7-liter 13 city/19 hwy with MDS using EPA methodology. Results depend on driving habits and conditions.

⁽³⁾Based on *Automotive News* classification. When properly equipped.



*Every Aspen blends dynamic performance, a smooth ride, and stunning good looks.
Aspen Hybrid shown in Deep Crimson.*



TECHNOLOGY

Intelligent innovations such as fuel-saving⁽¹⁾ hybrid technology and the performance-enhancing Electronic Stability Program (ESP) combined with savvy, indulgent features such as uconnect studios featuring SIRIUS Backseat TV™⁽²⁾ and second-row heated leather-trimmed seats make Aspen technologically brilliant.

⁽¹⁾Based on manufacturer's fuel economy of 19 city/20 hwy using EPA methodology.

⁽²⁾"SIRIUS," the SIRIUS dog logo, "SIRIUS Backseat TV" and related marks are trademarks of SIRIUS Satellite Radio Inc. All other trademarks, service marks and logos are the property of their respective owners. All rights reserved. Subscription required. Pricing and programming content are subject to change. Not available in Alaska and Hawaii. For full Terms & Conditions, visit SIRIUS.com.

Aspen's tech-savvy cabin features uconnect, a host of passenger conveniences, brilliant craftsmanship, and seating for up to eight (seven-passenger interior shown).



Aspen Hybrid instrument panel with Madrona Burl woodgrain accents.

INTERIOR

Interior appointments. From its Madrona Burl woodgrain accents and Satin Silver trim to its advanced instrument panel, Aspen delivers interior touches that are nothing short of sophisticated.

① **Rear temperature control.** Designed with the most refined conveniences, separate controls for Aspen's front and rear passengers keep everyone comfortable during the ride. A 115-volt auxiliary two-pronged plug ensures that there is always plenty of power for laptops, portable gaming devices, or tailgating essentials such as a slow cooker or portable TV.

② **Power sunroof.** Open up to a new day. Aspen's available one-touch express power sunroof opens and closes with a simple touch of a button. Standard power door locks with remote keyless entry, power windows, and power mirrors make unlocking doors and adjusting windows and mirrors just as easy.

③ **Seating arrangements.** Inside Aspen you will find lavish features and a cabin spacious enough for standard eight-passenger seating. With three rows of comfortable seating, including 40/20/40 split-folding bench seating in the second row and 60/40 split-folding bench seating in the third row, there are a multitude of ways to configure your Aspen giving you untouchable adaptability. Or choose available seven-passenger seating with heated, leather-trimmed second-row bucket seats, and passengers can enjoy captain-chair comfort. When transporting lengthy items such as skis and bikes, simply fold down the second- and third-row seats for easy accommodations.

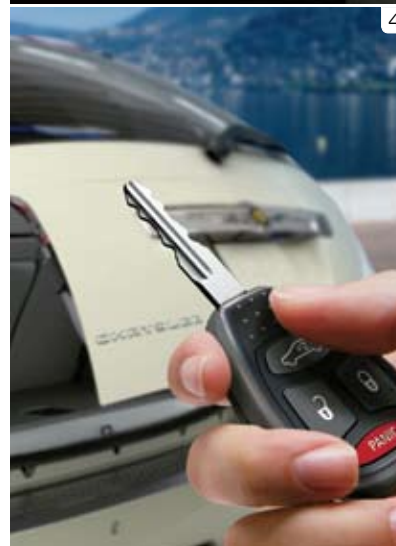


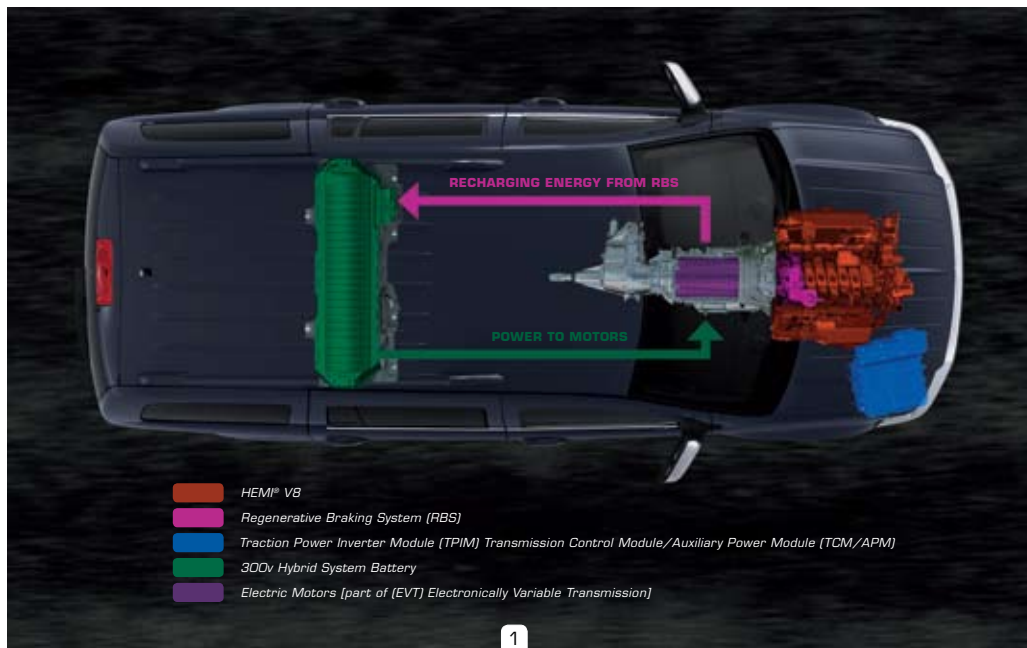
Stain Repel. All interiors featuring eight-passenger cloth seats boast stain-resistant, odor-resistant, antistatic cloth seat fabric⁽¹⁾ that employs a dual-action technology, woven into the fabric, to help repel and release stains without solvents. Spilled coffee, a child's sticky fingers, and muddy paw prints are no longer issues.

④ **Power liftgate.** A simple push of the button from either the key fob or the overhead console conveniently opens or closes the available power liftgate. A luxury you will really appreciate when you are carrying groceries or packages to and from your Aspen.

⑤ **Best-in-class⁽²⁾ interior and cargo room.** With more room inside than any other vehicle in its class, Aspen has more than enough elbow room for its passengers and abundant space for cargo. When there is a big load to haul, simply fold all the seats down to reveal up to 102.4 cu ft of total cargo room. This is how luxury and full-size capability coexist.

⁽¹⁾Not compatible with aftermarket fabric-protecting coatings. ⁽²⁾Based on Automotive News classification. When properly equipped. Properly secure all cargo.





PERFORMANCE

1 Hybrid system. Fuel-saving technologies. SUV capability. HEMI® power. This is Aspen Hybrid. Unlike traditional hybrid vehicles, Aspen Hybrid offers both better fuel efficiency⁽¹⁾ — nearly 40 percent for city driving and almost 25 percent⁽¹⁾ better combined fuel economy. This is how: the Two-Mode Hybrid system reflects the efficiency of how low and high speeds are controlled by the electrically variable transmission. The first mode controls efficiencies during lower speeds — city driving, stop-and-go traffic — the second mode maintains those efficiencies — but at the higher speeds of highway driving.

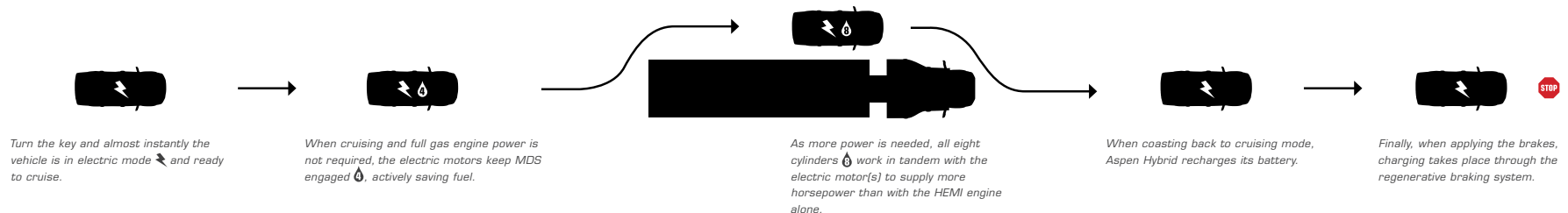
The system always focuses on the most efficient use of fuel without sacrificing the power of the V8. Best of all, with the help of two electric motors, the Multi-Displacement System (MDS) — the innovative system that seamlessly transforms this powerful 8-cylinder into a fuel-saving 4-cylinder at cruising speeds when full power is not needed — operates much more frequently. Up to 25 miles an hour, Aspen is powered by two electric motors, with power coming from energy stored in the ancillary battery system. Finally, “regenerative” braking helps capture and store kinetic energy that is normally lost in a conventional system.

2 Best-in-class⁽²⁾ towing. It should come as no surprise that a vehicle with such a powerful engine boasts best-in-class towing. Choose the 2WD 5.7-liter VVT HEMI V8 engine with fuel-saving MDS for best-in-class maximum trailer towing capacity of 8,900 lb. With 4WD, the maximum trailer towing capacity is 8,700 lb. Aspen Hybrid delivers what hybrid cars can't offer — 6,000 lb of tough 4x4 towing capacity.

3 Multi-Displacement System (MDS). With MDS the engine spends more time in four-cylinder mode, providing a fuel economy benefit,⁽³⁾ depending on driving habits and conditions. The engine idles on eight cylinders for maximum smoothness, uses all eight for acceleration and heavy loads, and seamlessly transitions to four cylinders based on torque requirements, even at interstate highway speeds.

Redesigned 5.7L VVT HEMI V8 with MDS. With unmatched capability and performance, this 5.7-liter VVT HEMI V8 engine with variable valve timing (VVT) and fuel-saving MDS produces powerful horsepower and 401 lb-ft of torque. The catalyst for numbers this potent is the combination of automotive technologies, including a dual-stage active intake and VVT, which works to optimize air and fuel flow into the HEMI engine's hemispherical combustion chambers.

⁽¹⁾Based on manufacturer's fuel economy of 19 city/20 hwy using EPA methodology. Comparison based on 2008 MY Aspen models with a 5.7L HEMI V8 versus 2009 Aspen Hybrid model. ⁽²⁾Based on Automotive News classification. When properly equipped. ⁽³⁾Based on manufacturer's preliminary 4x2 fuel economy numbers of 5.7-liter 13 city/19 hwy with MDS using EPA methodology. Results depend on driving habits and conditions.



TECHNOLOGY

① **uconnect** The 6.5-inch touch-screen **uconnect tunes** provides entertainment, information, and communication, all through an AM/FM/CD/DVD⁽¹⁾ stereo system. A 30GB hard drive allows you to store photos, playlists, maps, and points of interest, as well as rip, stash, organize, and shuffle up to 6,700 digital music files from CDs, integrated USB port, or exterior input jack. The touch-screen allows you to easily change radio stations and play digital audio files. Or, step up to **uconnect gps**, which includes all the same great features, and adds the convenience of turn-by-turn navigation with real-time traffic updates using **SIRIUS® Satellite Radio**⁽²⁾. The included **uconnect phone** provides hands-free, voice-activation capability with your Bluetooth® compatible phone.

② **uconnect studios** Like a menu offering the best of in-vehicle technology, **uconnect studios** lets you either bundle or select individual available features such as **SIRIUS Satellite Radio**. Gain access to over 130 channels, including 100% commercial-free music, sports, news, talk, entertainment, traffic, and weather. Comes bundled with **uconnect gps** or can be added as a stand-alone feature. **SIRIUS Backseat TV**⁽²⁾ The available SIRIUS Backseat TV allows live content from three favorite family channels — Nickelodeon,™ Disney Channel, and Cartoon Network — to stream directly to your Aspen 24/7. For added value, front-seat passengers can enjoy separate programming on SIRIUS Satellite Radio while rear-seat occupants view SIRIUS Backseat TV.

③ **uconnect phone** Go high-tech with an in-vehicle, voice-activated communication system that allows you to talk on your Bluetooth compatible phone virtually hands-free. Comes bundled with **uconnect gps** or can be added as a stand-alone feature.

④ **uconnect web** Turn your vehicle into a WiFi Hotspot with this Authentic Chrysler Accessory by Mopar. Subscription required, sold separately.

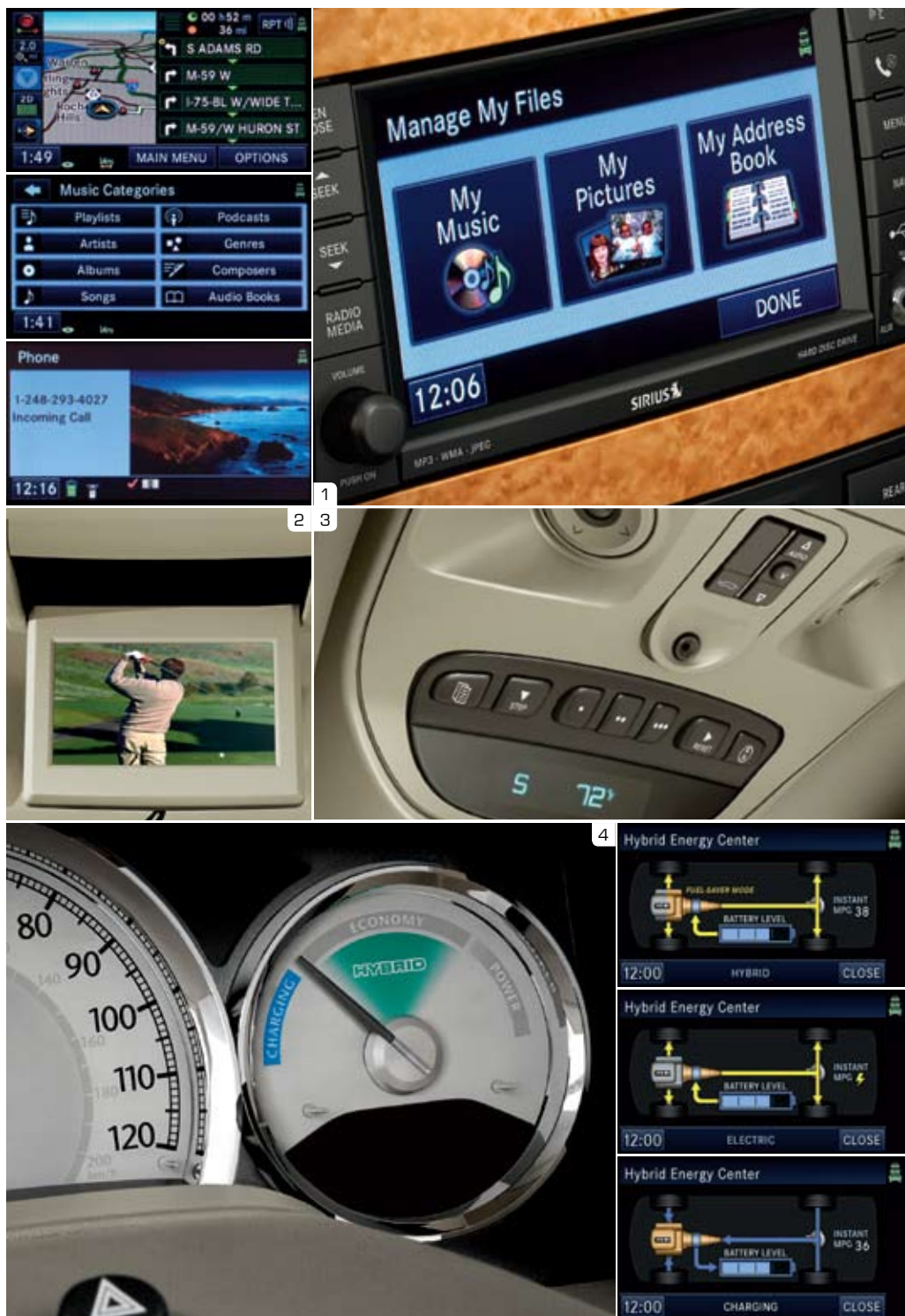
② **Rear Seat Video™ System.** This available system entertains rear-seat passengers with a DVD player and large eight-inch screen. This system also plays audio CDs and MP3 discs. A convenient jack also allows for the connection of a video camera, a video game system, or MP3 player. A battery-powered remote control and two wireless headsets are included. Packaged with one-year SIRIUS Backseat TV.™

③ **Electronic Vehicle Information Center (EVIC).** Important stats such as distance to empty, average fuel economy, temperature reading, compass, and maintenance intervals are digitally displayed on Aspen's EVIC. All Aspen models include a Tire Pressure Monitoring Warning Lamp and a Tire Pressure Monitoring Display in the EVIC that activate when tire maintenance is required.

④ **Hybrid gauge.** Use the unique Hybrid gauge found on Aspen Hybrid models to adjust driving habits for maximum fuel economy. When driving efficiently, the needle will be at the 12 o'clock position. When the needle falls to either side, simply adjust Aspen Hybrid's speed to become optimally efficient again.

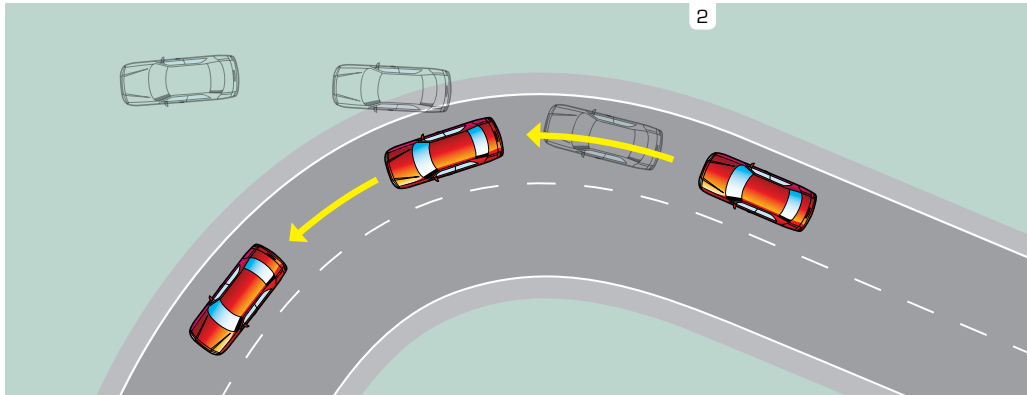
Hybrid information center. View screens from the **uconnect** touch-screen monitor to determine which engine mode you are traveling in. For example, the "HYBRID" message will appear when driving in hybrid mode, "FUEL SAVER" will appear when the engine is running in MDS mode, and while braking or coasting, "CHARGING" will appear to signal regenerative braking is taking place.

⁽¹⁾uconnect in-dash DVD capability is not available in all states. See your dealer for details. ⁽²⁾"SIRIUS," the SIRIUS dog logo, "SIRIUS" Backseat TV and related marks are trademarks of SIRIUS Satellite Radio Inc. All other trademarks, service marks and logos are the property of their respective owners. All rights reserved. Subscription required. Pricing and programming content are subject to change. Not available in Alaska and Hawaii. For full Terms & Conditions, visit SIRIUS.com. © 2008 Viacom International Inc. All rights reserved. Nickelodeon, The Adventures of Jimmy Neutron Boy Genius and all related titles, logos and characters are trademarks of Viacom International Inc. DISNEY CHANNEL and The DISNEY CHANNEL LOGO are trademarks of Disney Enterprises, Inc. and used with permission. CARTOON NETWORK and the logo are trademarks of and © 2008 Cartoon Network. A Time Warner Company. All rights reserved.





1
2



3



SAFETY AND SECURITY

1 Air bags. All Aspen models include **standard advanced multistage driver and front-passenger air bags**.⁽¹⁾ These air bags provide nearly instantaneous occupant protection by matching air bag output to crash severity. **Standard supplemental side-curtain air bags**⁽¹⁾ with roll-sensing technology deploy from the headliner to provide side-impact protection to outboard occupants in all rows. Technology keeps side-curtain air bags deployed longer in the event of a rollover.

Five-Star frontal crash test rating. Chrysler Aspen has earned a Five-Star crash test rating for frontal impact.⁽²⁾ This represents the highest possible vehicle crash test safety rating for frontal impact from the National Highway Traffic Safety Administration (NHTSA).

2 Electronic Stability Program⁽³⁾ (ESP). Designed to assist drivers in maintaining control of their vehicle at all times, ESP uses the collective technologies of Brake Assist, all-speed traction control, Electronic Roll Mitigation (ERM), and Trailer Sway Control (TSC) to constantly monitor the driver's input against the vehicle's actual course. If needed, ESP will attempt to correct the vehicle's course by automatically applying the brake and/or reducing engine torque. Meanwhile, the ERM system estimates the potential for wheel lift. If necessary, engine power is reduced and appropriate braking is applied to help stabilize the vehicle.

3 ParkView[®] Rear Back-Up Camera⁽⁴⁾ Thanks to the camera mounted on Aspen's liftgate and a 6.5-inch screen on your radio, you will have a better visual of objects while driving in reverse. **ParkSense[®] Rear Park Assist System⁽⁴⁾** ParkSense uses audio and visual warnings to assist drivers during reverse parking maneuvers to avoid colliding with most large stationary objects.

⁽¹⁾Always sit properly in the seat with the seat belt fastened. Children 12 and under should always be in a backseat, correctly using an infant or child restraint system or the seat belt positioned correctly for the child's age and weight. ⁽²⁾Star ratings are part of the U.S. Department of Transportation's SaferCar.gov program (www.safercar.gov).



Solid construction. Under Aspen's sleek sheet metal and glossy paint are some of the most advanced technologies available to help protect its most precious cargo — you and your passengers. Front frame rail tips and crush zones are designed to absorb energy and deflect intrusion from the passenger compartment. The surrounding protection of Aspen's safety cage construction provides a protective shell around occupants.

SecureShield.[®] Aspen's available laminated side-window glass is made of material similar to that of the vehicle's windshield and therefore can break, but not shatter. This not only contributes to the safety features of the vehicle but deters theft intrusion and contributes to cabin noise reduction.

Lifetime Powertrain Limited Warranty⁽⁵⁾ As an Aspen owner, you deserve the ultimate peace of mind, so we provide you with the ultimate warranty: the Chrysler Lifetime Powertrain Limited Warranty. The first to be offered by any automaker. Ever. It demonstrates the confidence we have in our ability to produce quality vehicles with reliable and durable powertrains warranted to last a lifetime. Excludes all Hybrid System components, including the transmission.



⁽³⁾No system, no matter how sophisticated, can repeal the laws of physics or overcome careless driving actions. Performance is limited by available traction, which snow, ice and other conditions can affect. When the ESP warning lamp in the speedometer flashes, the driver needs to use less throttle and adapt speed and driving behavior to prevailing road conditions. Always drive carefully, consistent with conditions. Always wear your seat belt. ⁽⁴⁾Always check entire surroundings before backing up. ⁽⁵⁾No deductible. See dealer for a copy of limited warranty details. Non-Transferable. Not available on Hybrid System components (including transmission) and certain fleet vehicles.



A
18-inch chrome-clad
cast aluminum wheel



B
20-inch chrome-clad
cast aluminum wheel

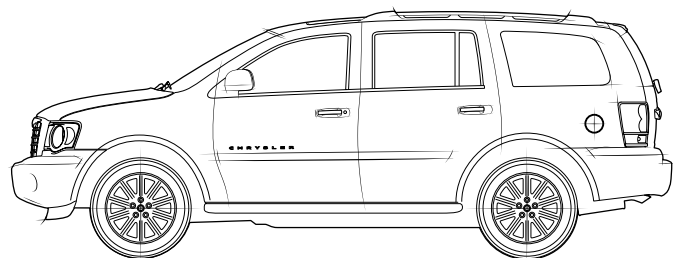


20-inch
chrome wheel

CHRYSLER ACCESSORIES
Authentic Chrysler Accessories
by Mopar are also available to personalize
your Chrysler Aspen.

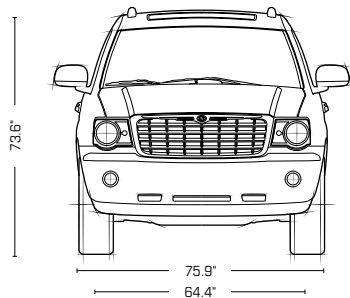
	A	B
Aspen Limited "E" Package	S	
Aspen Limited "J" Package		S
Aspen Limited-Hybrid	S	

S = Standard.



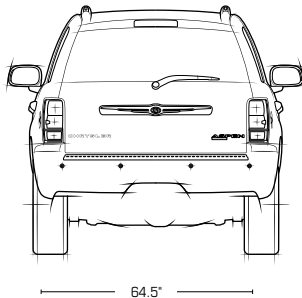
119.2"

202.1"

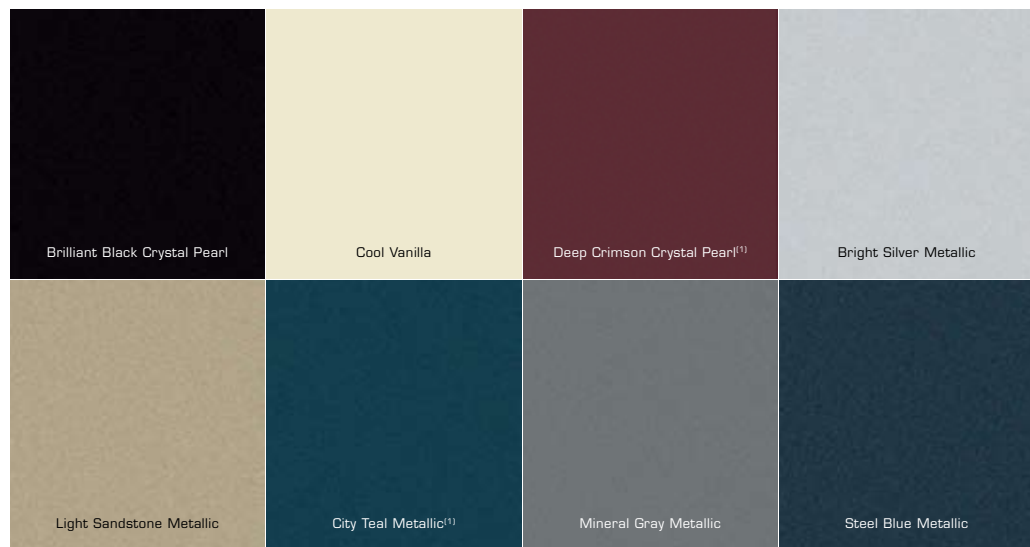


75.9"

64.4"



64.5"

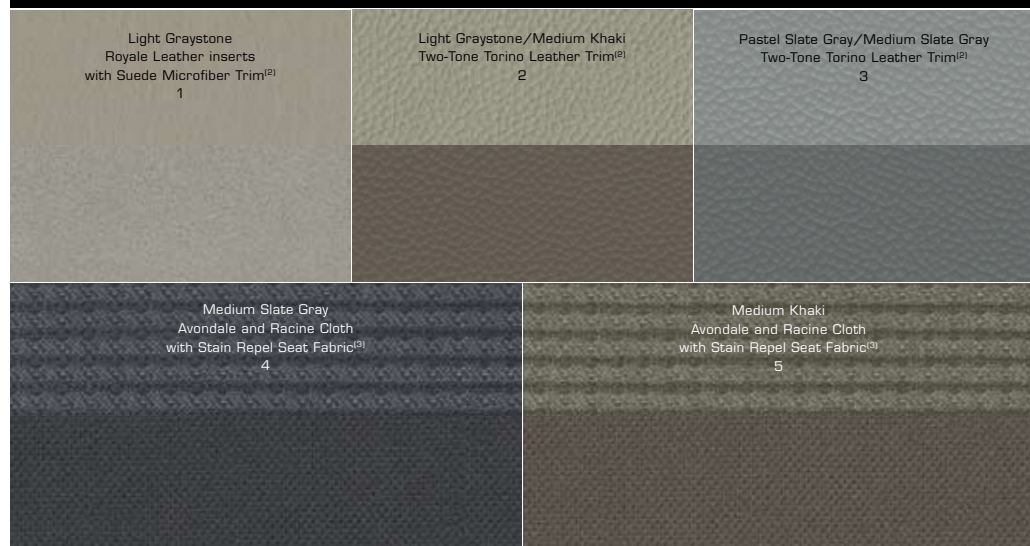


EXTERIOR COLORS

	Brilliant Black Crystal Pearl	Cool Vanilla	Deep Crimson Crystal Pearl	Bright Silver Metallic	Light Sandstone Metallic	City Teal Metallic	Mineral Gray Metallic	Steel Blue Metallic
Limited "J" Package	1	1	1	1	1	1	1	1
Limited "E" Package	2,3,4,5	2,3,4,5	2,3,4,5	2,3,4,5	2,5	2,3,4,5	2,3,4,5	2,3,4,5
Aspen Limited-Hybrid	1	1	1	1	1	1	1	1

⁽¹⁾ Late availability ⁽²⁾ First and second rows only. ⁽³⁾ Not compatible with aftermarket fabric-protecting coatings.

INTERIOR COLORS



	Limited		
	E	J	Hybrid
ENGINE/TRANSMISSION			
4.7L Flex Fuel V8/5-speed automatic	26E		
5.7L VVT HEMI® V8 with Multi-Displacement System (MDS)/5-speed automatic	28E	28J	
5.7L VVT HEMI V8 Two-Mode Hybrid (w/MDS)/4-speed electronically variable automatic			29V
MECHANICAL			
Active Turn Signals — 3-blink lane-change signal activated with a single tap	S	S	S
Alternator — 160-amp	S	S	
Axle Ratio — 3.21:1	S ⁽²⁾		S
— 3.55:1	0 ⁽²⁾ /S ⁽¹⁾	0 ⁽²⁾ /S ⁽¹⁾	
— 3.92:1 (included with Trailer Tow Group when equipped with 5.7L HEMI V8 engine)	P	P	
Battery — 750-amp, maintenance-free with rundown protection	S	S	
— 500-amp, maintenance-free with rundown protection			S
Brakes — 4-wheel disc antilock	S	S	S
— Regenerative braking			S
Engine Block Heater	O	O	
Remote Start System — Control integrated into key fob (included with Popular Equipment Group)	P	S	
Steering — Power rack-and-pinion	S	S	S
Suspension — Heavy-duty, independent front and link coil rear with Watt's linkage	S	S	S
Tip Start — Quick start, prevents double starts, preserves battery, ignition, and gear life	S	S	
Transfer Case ⁽¹⁾ — Full-time single-mode AWD system (requires 4.7L V8 engine)	S		
— Full-time AWD system with low-range (included with 5.7L HEMI V8 engine and Trailer Tow Group)	P	S	
— Single-speed on demand			S
EXTERIOR FEATURES			
Bodyside Molding — Chrome	S	S	S
Fascias — Front and rear, body-color with chrome insert	S	S	S
Fog Lamps — Two integrated in front fascia	S	S	S
Glass — Laminated front and rear door		S	S
Headlamps — Automatic	S	S	S
License Plate Brow — Chrome	S	S	S
Liftgate — Power	S	S	S
Mirrors — Power black with chrome cap, 6"x9", folding, heated	S		
— Power black with chrome cap, 6"x9", folding, heated with memory and driver's auto-dimming		S	S
Running Boards — Body-color (included with Popular Equipment Group)	P	S	S
Side Rails — Roof-mounted, body-color with stainless steel accents	S	S	S
Sunroof — Power with one-touch open/close and vent feature	O	O	O
Tires — P265/60R18 BSW on-/off-road	S		S
— P265/50R20 BSW all-season		S	
Wheels — 18" x 8" chrome-clad cast aluminum	S		S
— 20" x 8" chrome-clad cast aluminum		S	
INTERIOR FEATURES			
Air Conditioning — Front and rear manual temperature control with rear heat	S		
— Automatic tri-zone temperature control		S	S
Cargo Tie-Down Loops — Cargo area	S	S	S
Carpets — Floor and cargo area	S	S	S
Console — Overhead with HomeLink® Universal Transceiver and Electronic Vehicle Information Center (EVIC): compass, temperature, trip odometer, average fuel economy, distance to empty, and elapsed time	S	S	S
— Rear floor (included with 2nd-row bucket seats)	P	P	
— Floor with premium armrest (includes 12V auxiliary power outlet)	S	S	S

	Limited		
	E	J	Hybrid
INTERIOR FEATURES (CONTINUED)			
Door Trim Panel — Premium, two-tone, with front door map pockets, Satin Silver door-pull handle, and padded vinyl upper trim	S	S	S
Floor Mats — Premium carpet, front and rear	S	S	S
Instrument Cluster — Includes speedometer, tachometer, coolant temperature, and fuel gauge with Satin Silver accent rings	S	S	
— Includes speedometer, power gauge, coolant temperature, and fuel gauge with Satin Silver accent rings			S
Instrument Panel Bezel — Madrona Burl woodgrain finish	S	S	S
Lamps — Front and rear aimable LED	S	S	S
Memory System — Automatically recalls preset positions for driver's seat, radio, temperature controls, driver's exterior mirror, and power adjustable pedals		S	S
Mirrors — Rearview, day/night	S		
— Rearview, auto-dimming		S	S
Pedals — Non-adjustable	S		
— Power adjustable (included with Popular Equipment Group)	P	S	S
Power Outlet — 115-volt auxiliary, located on back of center console	S	S	S
Steering Wheel — Leather-wrapped 4-spoke with integrated speed and audio controls	S	S	S
Storage — Rear compartment tray, covered	S	S	S
Sun Visors — Dual with illuminated vanity mirror and slide feature	S	S	S
SEATING			
Seats — Premium cloth low-back bucket with Stain Repel seat fabric ⁽³⁾	S		
— Leather-trimmed low-back bucket (1st and 2nd rows only)	O		
— Premium leather-trimmed low-back bucket with suede microfiber trim (1st and 2nd rows only)		S	S
— 8-way power driver's	S		
— 8-way power driver's with memory and 4-way power front-passenger		S	S
— Heated front (included with leather-trimmed seats)	O	S	S
— 40/20/40 fold-and-tumble 2nd-row reclining bench	S	S	S
— Bucket, 2-passenger 2nd-row (includes heat and rear floor console; requires leather-trimmed seats)	O	O	
— 60/40 split-bench 3rd-row, folds flat into rear cargo area with one-hand operation	S	S	S
ENTERTAINMENT SYSTEMS			
uconnect — uconnect tunes — Includes AM/FM/CD/DVD ⁽⁴⁾ 30GB Hard Drive/MP3 radio with touch-screen operation	S	S	
— uconnect gps — Includes AM/FM/CD/DVD ⁽⁴⁾ /MP3 radio with navigation and touch-screen/voice recognition operation and real-time traffic updates		O	S
— uconnect studios — with SIRIUS Satellite Radio	S	S	S
— uconnect studios — with SIRIUS Backseat TV™ (included with Rear Seat Video™ System)	P	P	P
— uconnect web — Subscription required, sold separately (Authentic Chrysler Accessory by Mopar)	O	O	O
Rear Seat Video™ System — DVD system includes headliner-mounted 8" screen, remote control and 2 wireless headsets (includes SIRIUS Backseat TV™; requires uconnect tunes or uconnect gps)	O	O	O
Speakers — Alpine® Premium Sound System I with 8 speakers and 276-watt amp	S		
— Alpine Premium Sound System II with 8 speakers plus a subwoofer and 368-watt amp		S	S
SAFETY AND SECURITY			
Air Bags ⁽⁵⁾ — Advanced multistage driver and front-passenger	S	S	S
— Supplemental side-curtain with roll-sensing technology for outboard occupants in all seating rows	S	S	S
Electronic Stability Program ⁽⁶⁾ — Includes Brake Assist, all-speed traction control, Electronic Roll Mitigation (ERM) and Trailer Sway Control (TSC)	S	S	S
ParkSense® Rear Park Assist System ⁽⁷⁾	S	S	S
ParkView® Rear Back-Up Camera ⁽⁷⁾	S	S	S
Security Alarm — Integrated vehicle alarm system	S	S	S
Sentry Key® — Anti theft engine immobilizer	S	S	S
Tire Pressure Monitoring Display	S	S	S
Tire Pressure Monitoring Warning Lamp	S	S	S
uconnect phone ⁽⁸⁾ — Included with auto-dimming rearview mirror		S	S

	Limited		
	E	J	Hybrid
PACKAGES			
Trailer Tow Group — Includes Class IV receiver hitch, 7- and 4-pin wiring harness, and the Heavy-Duty Service Group (and Skid Plate Group and full-time AWD transfer case with low range on gas 4x4 models) ⁽³⁾ Additional Chrysler towing accessories may be required	O	O	O
Heavy-Duty Engine Cooling — Includes auxiliary transmission oil cooler and power steering cooler (included with Heavy-Duty Service Group)	P	P	P
Heavy-Duty Service Group — Includes Heavy-Duty Engine Cooling (included with Trailer Tow Group)	P	P	P
Skid Plate Group ⁽¹⁾ — Includes tow hooks and skid plates for the fuel tank and transfer case (included with Trailer Tow Group)	P	P	
Popular Equipment Group — Includes remote start system, body-color running boards and power adjustable pedals	O		

S = Standard. P = Included in package noted in parentheses. O = Optional.

⁽¹⁾4x4 models only. ⁽²⁾4x2 models only. ⁽³⁾Not compatible with aftermarket fabric-protecting coatings. ⁽⁴⁾uconnect in-dash DVD capability is not available in all states. See your dealer for details. ⁽⁵⁾Always use seat belts. Children 12 and under should always be in a backseat correctly using an infant or child restraint system, or the seat belt positioned correctly for the child's age and weight. ⁽⁶⁾No system, no matter how sophisticated, can repeal the laws of physics or overcome careless driving actions. Performance is limited by available traction, which snow, ice and other conditions can affect. When the ESP warning lamp in the speedometer flashes, the driver needs to use less throttle and adopt speed and driving behavior to prevailing road conditions. Always drive carefully, consistent with conditions. Please always wear your seat belt. ⁽⁷⁾Always check entire surroundings before backing up. ⁽⁸⁾Must use Bluetooth® compatible phone. ⁽⁹⁾Ball mount, hitch ball, hitch plug and wiring harness Chrysler Accessory sold separately. EVS, HEMI, Mopar, ParkSense, ParkView, SecureShield, Sentry Key, SRT and uconnect are registered trademarks and DVD Rear Seat Video is a trademark of Chrysler LLC. "SIRIUS," the SIRIUS dog logo, and "SIRIUS Backseat TV" are trademarks of SIRIUS Satellite Radio Inc. All other trademarks, service marks and logos are the property of their respective owners. All rights reserved. Subscription required. For full Terms & Conditions, visit SIRIUS.com. Pricing and programming content are subject to change. Not available in Alaska and Hawaii. Alpine and the Alpine logo are registered trademarks of Alpine Electronics, Inc. All rights reserved. Insurance is underwritten by member companies of American International Group, Inc. Bluetooth is a registered trademark of Bluetooth SIG, Inc. HomeLink is a registered trademark owned by Johnson Controls, Inc.

	Limited		
	E	J	Hybrid
ENGINE SPECIFICATIONS			
Engine Type	4.7L Flex Fuel V8	5.7L VVT HEMI® V8 with Multi-Displacement System	5.7L VVT HEMI V8 with Multi-Displacement System
Horsepower (SAE net @ rpm)	303 @ 5,650	376 @ 5600	360 ⁽¹⁾ @ 5150
Torque (lb-ft @ rpm)	330 @ 3,950	401 @ 3950	390 @ 4300
Displacement (cu in)	287	345	345
Bore x Stroke (in)	3.66 x 3.40	3.92 x 3.58	3.92 x 3.58
Valve Train Configuration	SOHC 16V	OHV 16V with Variable Valve Timing (VVT)	OHV 16V with Variable Valve Timing (VVT)
Compression Ratio	9.6:1	10.5:1	10.5:1

⁽¹⁾Total Hybrid System is up to 400 horsepower.

	Limited		
	E	J	Hybrid
PAYLOAD AND TOWING⁽¹⁾			
4x2 Models — Engines	4.7L Flex Fuel V8	5.7L VVT HEMI V8 with Multi-Displacement System	
— Maximum Payload (lb)	1,520	1,480	
— Maximum GVWR (lb)	6,450	6,450	
— Maximum Trailer Weight (lb) ⁽²⁾	5,950	8,900	
— Base Curb Weight (lb)	4,926	5,000	
— Fuel Economy ⁽³⁾ city (mpg)/highway (mpg)	(E85) 9 (gas) 14 (E85) 13 (gas) 19	13/19 ⁽⁴⁾	
— Fuel Tank Capacity (gal)	27	27	
4x4 Models — Engines	4.7L Flex Fuel V8	5.7L VVT HEMI V8 with Multi-Displacement System	5.7L VVT HEMI V8 Two-Mode Hybrid
— Maximum Payload (lb)	1,570	1,500	1,410
— Maximum GVWR (lb)	6,650	6,650	7,050
— Maximum Trailer Weight (lb) ⁽²⁾	5,800	8,700	6,000
— Base Curb Weight (lb)	5,070	5,143	5,637
— Fuel Economy ⁽³⁾ city (mpg)/highway (mpg)	(E85) 9 (gas) 13 (E85) 12 (gas) 18	13/18 ⁽⁴⁾	19/20 ⁽⁴⁾
— Fuel Tank Capacity	27	27	27

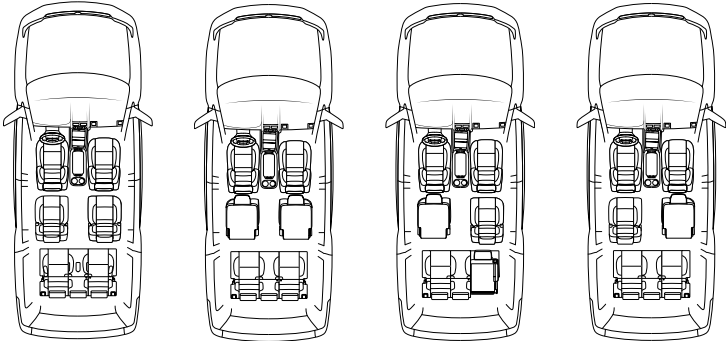
⁽¹⁾When properly equipped. ⁽²⁾Maximum trailer weight ratings include the weight of the cargo in the trailer and 150 lb for the driver, but must also be decreased by the weight of any optional equipment, trailer hitch, cargo in the Aspen and passengers. ⁽³⁾EPA est. mpg. ⁽⁴⁾Manufacturer's preliminary fuel economy numbers using EPA methodology.

	Limited	
INTERIOR DIMENSIONS^(1,2)		
Maximum Seating Capacity	8	
Front Row		
— Head Room	40.8	
— Leg Room	41.4	
— Shoulder Room	59.6	
— Hip Room	58.8	
Second Row		
— Head Room	39.2	
— Leg Room	37.4	
— Shoulder Room	59.6	
— Hip Room	57.2	
Third Row		
— Head Room	39.2	
— Leg Room	34.5	
— Shoulder Room	58.9	
— Hip Room	48.0	

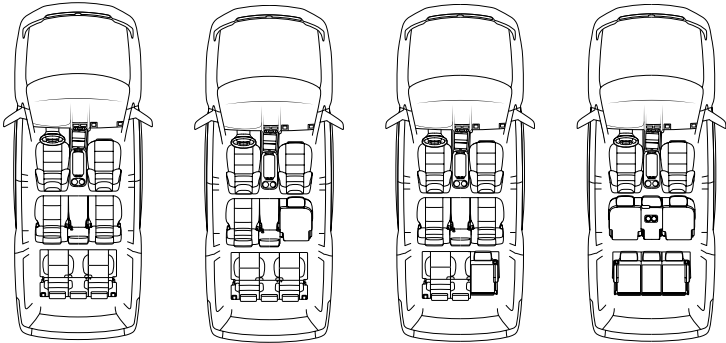
		Limited
INTERIOR DIMENSIONS ⁽¹⁾⁽²⁾		
Capacity Cargo Volume (cu ft)		
— Behind 1st Row		102.4
— Behind 2nd Row		68.4
— Behind 3rd Row		20.1
Passenger Volume (max) (cu ft)		152.6
EXTERIOR DIMENSIONS ⁽¹⁾⁽²⁾⁽³⁾		
Wheelbase		119.2
Overall Length		202.1
Overall Width		75.9
Overall Height		73.6
Track — Front/Rear		64.4/64.5
Turning Diameter (ft)		37.0

⁽¹⁾All dimensions in inches unless otherwise noted. ⁽²⁾Based on Limited E dimensions.

Available SEVEN-PASSENGER bucket seating (not available on Hybrid). Two bucket seats in the second row and three-passenger 60/40 split-folding bench seating in the third row.



EIGHT-PASSENGER bench seating. Three-passenger 40/20/40 split-folding bench seating with recline in the second row and three-passenger 60/40 split-folding bench seating in the third row.



CHRYSLER.COM

Our Web site offers detailed information on all Chrysler products. You can virtually assemble any vehicle you like. Simply choose the model with your favorite color combinations, equipment, and features — and then price it all out.

CALL 1-800-CHRYSLER.

Our friendly and knowledgeable product information specialists are available seven days a week, 8 a.m. – midnight (EST) to answer your questions.

Lifetime Powertrain Limited Warranty. No deductible. See dealer for a copy of limited warranty details. Non-Transferable. Not available on SRT® Hybrid System components (including transmission) and certain fleet vehicles.

Hybrid Warranty. All Hybrid System components (including transmission) are covered by a 8-year or 100,000-mile transferable limited warranty. See dealer for a copy of the limited warranty details.

Warranty. New Chrysler vehicles are covered by a 3-year or 36,000-mile Basic Limited Warranty. See your dealer for a copy of this limited warranty. Excludes normal maintenance and wear items.

Chrysler Financial. Chrysler Financial delivers Chrysler, Jeep, and Dodge customers a personal, worry-free automotive financing experience. More than just another finance company with competitive rates, Chrysler Financial stands behind you through life's twists and turns by offering fast approvals, flexible terms and unparalleled personalized service. Visit cf.com or your Chrysler dealer to discover all that Chrysler Financial offers. Taking care of you, all along the way.

Chrysler Auto Insurance!⁽¹⁾ The only insurance guaranteed to repair your vehicle using Authentic Chrysler Collision Repair Parts by Mopar for as long as you own your Chrysler vehicle, and up to \$100 off your deductible when those repairs are done at a Chrysler dealership — all at rates that are tough to beat. For a free quote, visit chryslerautoinsurance.com or call (877) 244-1531 and mention keycode QL8XXX.

VISIT YOUR DEALER.

Your Chrysler dealer's knowledgeable and professionally trained staff will guide you through the shopping process with expert advice.

Chrysler Service Contracts. Your Chrysler is one of the most inspiring vehicles on the road. Why not protect your investment with a Chrysler Service Contract or Maintenance Plan? For more information, see your Chrysler dealer, call (800) 442-2666 or visit servicecontracts.chrysler.com.

Authentic Chrysler Accessories by Mopar are designed specifically for your Chrysler vehicle for exceptional fit, finish and performance. Visit your dealership or mopar.com.

uconnect. This suite of integrated digital systems bundles entertainment, information, and communication. For more information, visit your dealer.

SIRIUS. SIRIUS Satellite Radio delivers over 130 channels, including 100% commercial-free music, sports, news, talk, entertainment, traffic and weather. Factory-installed SIRIUS Satellite Radio includes a one-year subscription. For more information, go to SIRIUS.com.

Chrysler Rewards Visa.⁽²⁾ Earn 5 points per dollar charged at your Chrysler dealership and 1 point per dollar everywhere Visa® is accepted. Whether you're saving points for your down payment or for your vehicle's scheduled maintenance, it pays to be a Chrysler Rewards Visa cardholder. For more information or to apply, visit chryslercreditcard.com or call (800) 478-6179.

Chrysler Gift Gallery pays tribute to the finer things in life. With everything from men's and women's apparel to accessories and designer collectibles, you are sure to take your style to the next level. View the entire collection of authentic merchandise at chrysler.com/giftgallery.

Honoring Those Who Serve. Chrysler LLC proudly supports the members of the U.S. Armed Forces and their families.

⁽¹⁾Insurance is underwritten by member companies of American International Group, Inc. ⁽²⁾The Chrysler Rewards Visa credit card is issued by FIA Card Services, N.A.



Chrysler Financial



uconnect

CHRYSLER | REWARDS VISA®

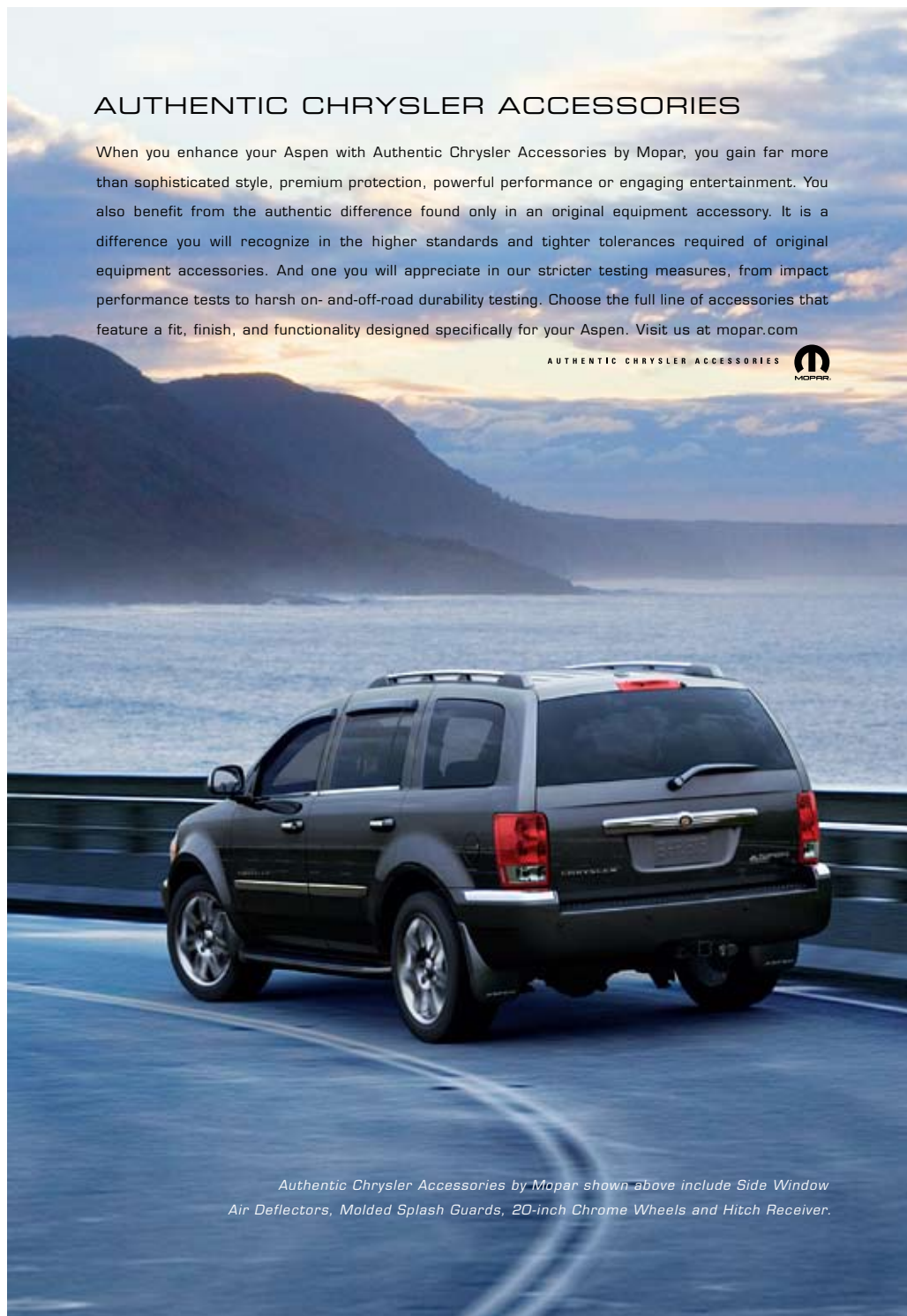


All product illustrations, specifications and competitive comparisons are based upon current information at the time of publication approval. Although descriptions are believed correct, complete accuracy cannot be guaranteed. Chrysler LLC reserves the right to make changes at any time, without notice or obligation, in prices, specifications, equipment, colors and materials, and to change or discontinue models. Some of the equipment shown or described throughout this catalog is available at extra cost and/or may be subject to late availability. See your dealer for the latest information.

AUTHENTIC CHRYSLER ACCESSORIES

When you enhance your Aspen with Authentic Chrysler Accessories by Mopar, you gain far more than sophisticated style, premium protection, powerful performance or engaging entertainment. You also benefit from the authentic difference found only in an original equipment accessory. It is a difference you will recognize in the higher standards and tighter tolerances required of original equipment accessories. And one you will appreciate in our stricter testing measures, from impact performance tests to harsh on- and-off-road durability testing. Choose the full line of accessories that feature a fit, finish, and functionality designed specifically for your Aspen. Visit us at mopar.com

AUTHENTIC CHRYSLER ACCESSORIES



Authentic Chrysler Accessories by Mopar shown above include Side Window Air Deflectors, Molded Splash Guards, 20-inch Chrome Wheels and Hitch Receiver.