

DISCOVER THE CHRYSLER 300M



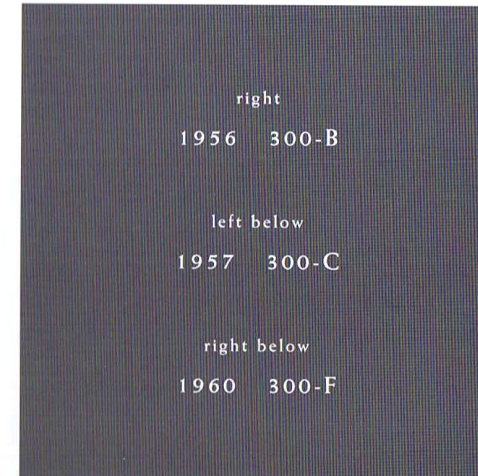
THIS CAR BEGINS A NEW CHAPTER FOR US . . .

AN AMERICAN BALANCE OF STYLE, PERFORMANCE, TECHNOLOGY AND COMFORT

Theodor Cunningham, Executive Vice President - International



1955 C-300



right
1956 300-B

left below
1957 300-C

right below
1960 300-F

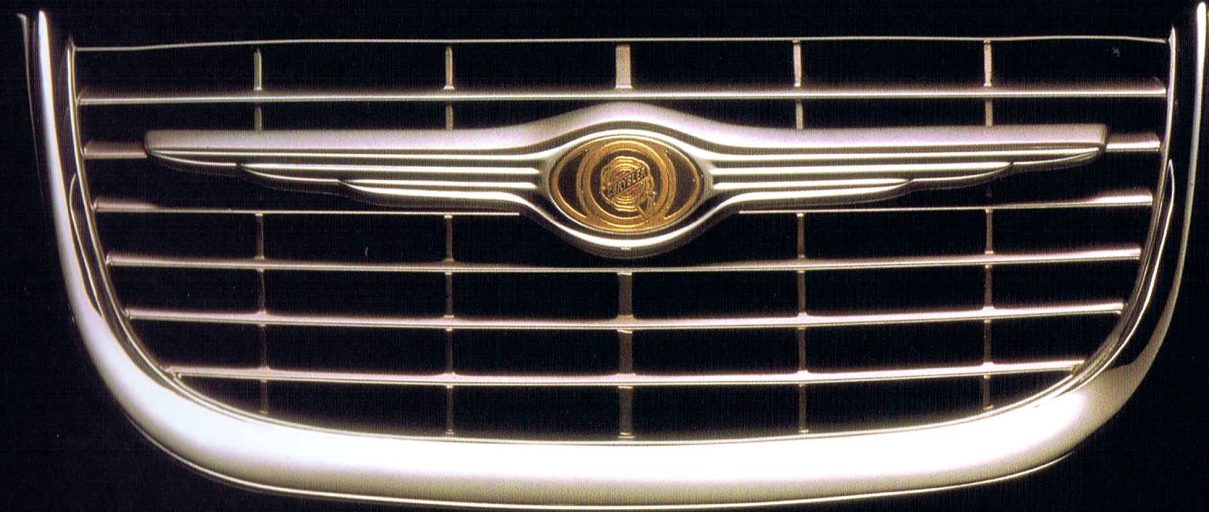


WE WANTED TO CAPTURE A BIT OF A REBEL ATTITUDE WITH

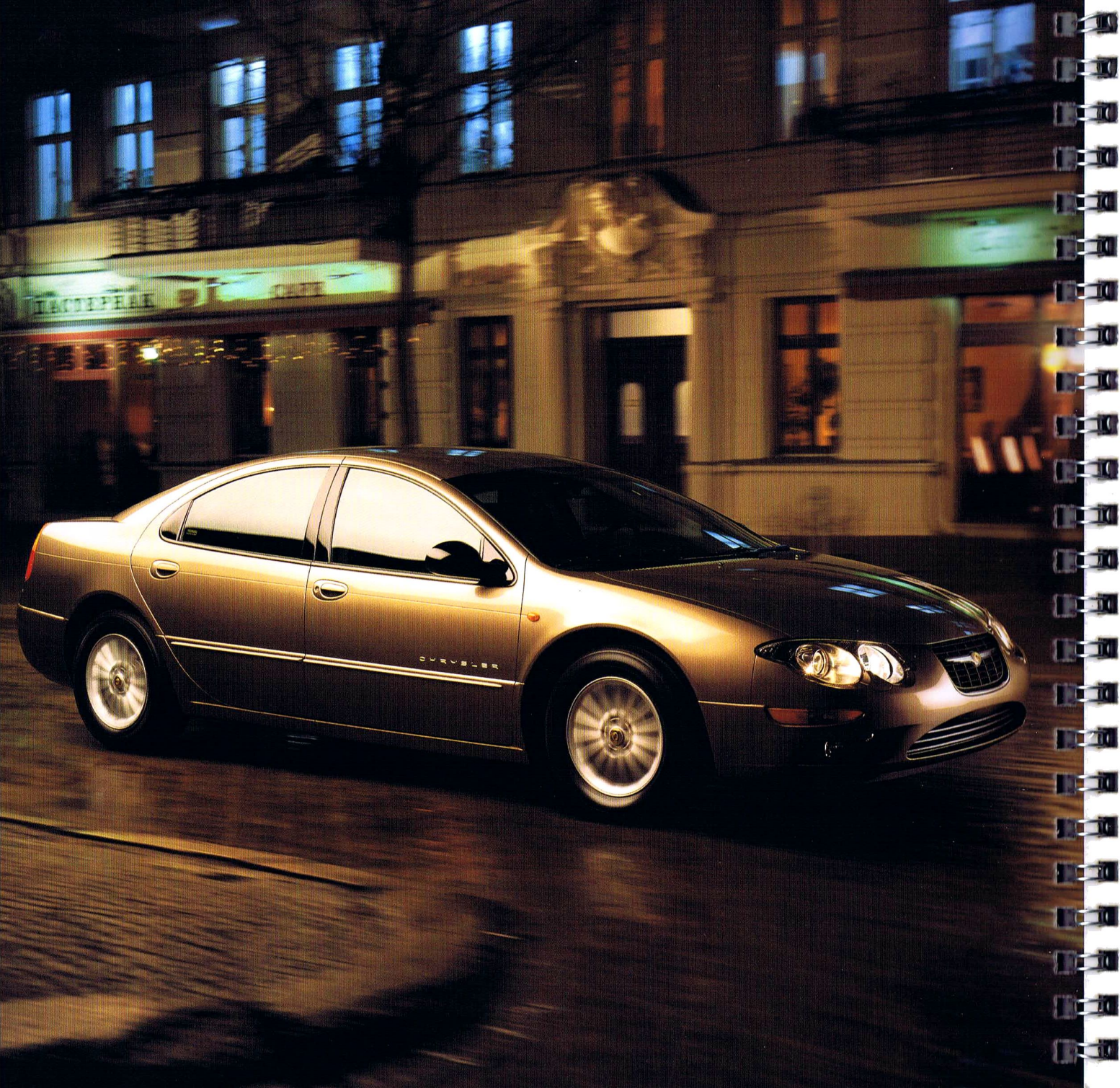


UNMISTAKABLE ROAD PRESENCE ON ANY CONTINENT

Tom Gale, Executive Vice President, Product Strategy and Design







THE 1999 CHRYSLER

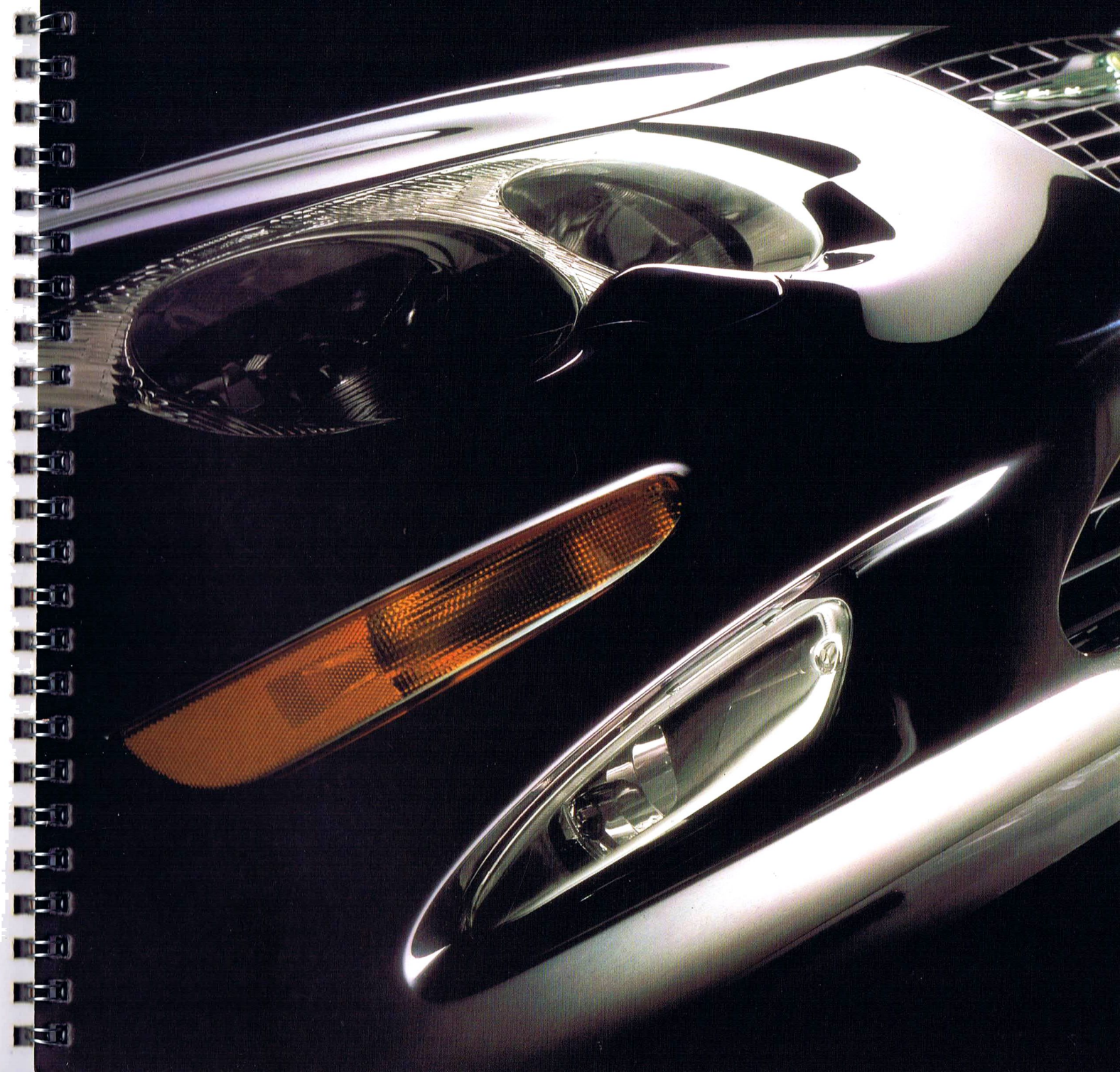


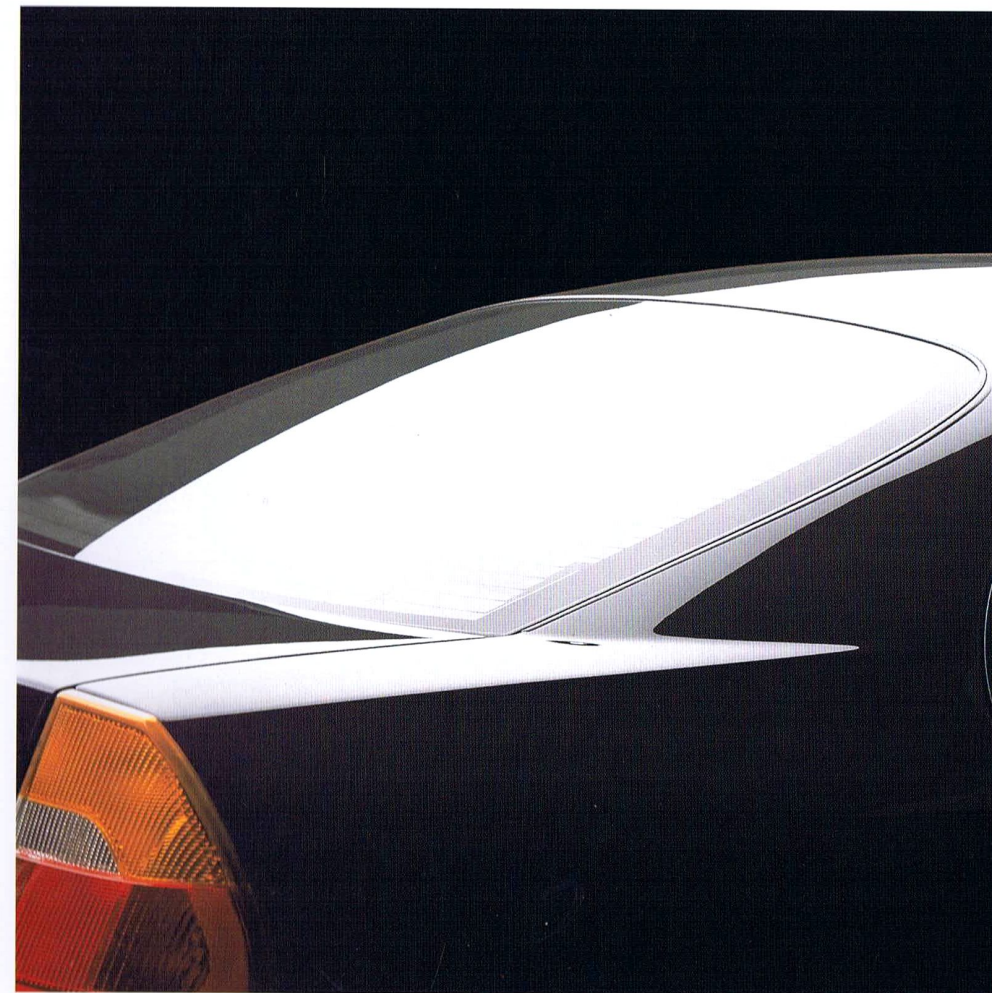
EMBODIES THE SAME

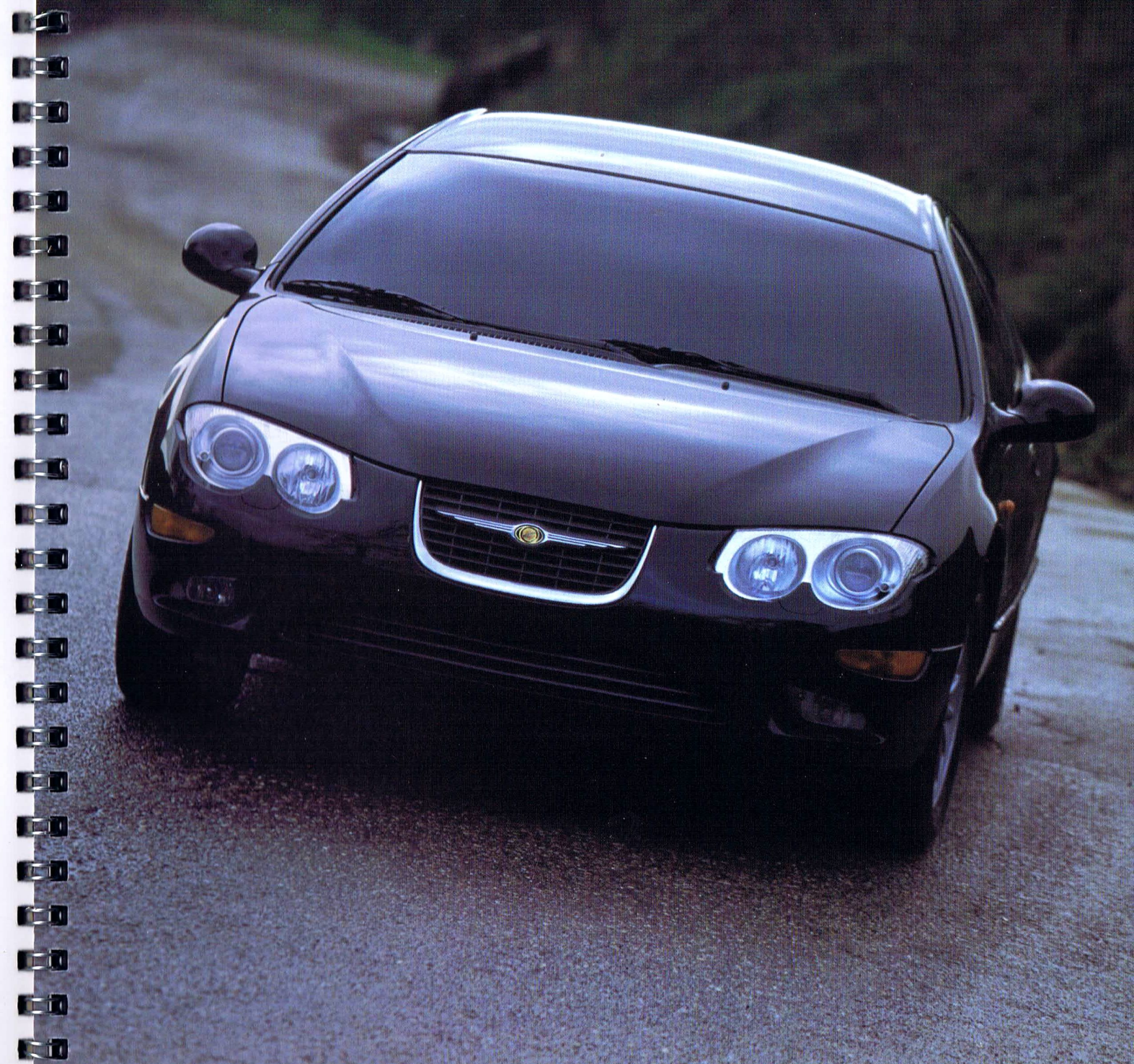
PHILOSOPHY AND PEDIGREE OF THOSE EARLY CARS, BUT WITH A VERY CONTEMPORARY

INTERPRETATION OF WHAT PERFORMANCE HAS COME TO MEAN IN THIS CLASS OF CAR

Robert J. Eaton, Chairman, Chrysler Corporation







1955  C-300

1956  300B

1957  300C

1958  300D

1959  300E

1960  300F

1961  300G

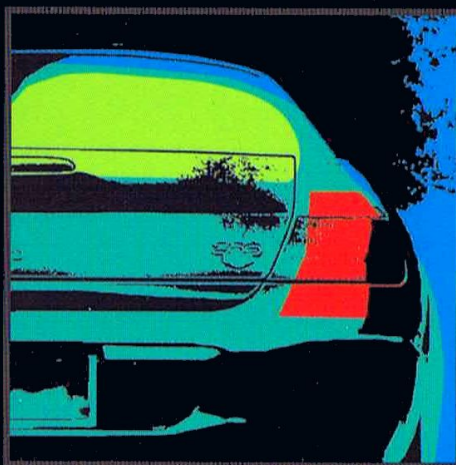
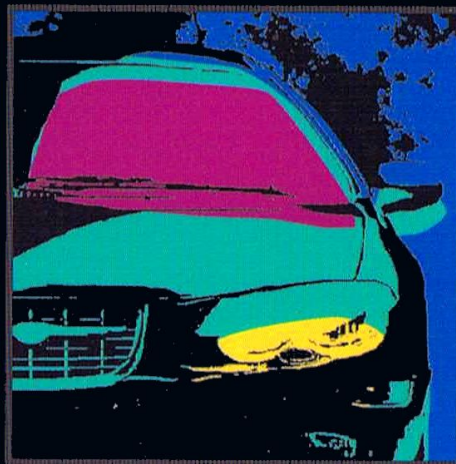
1962  300H

1963  300J

1964  300K

1965  300L

1999  300M



DISCOVER THE CHRYSLER 300M