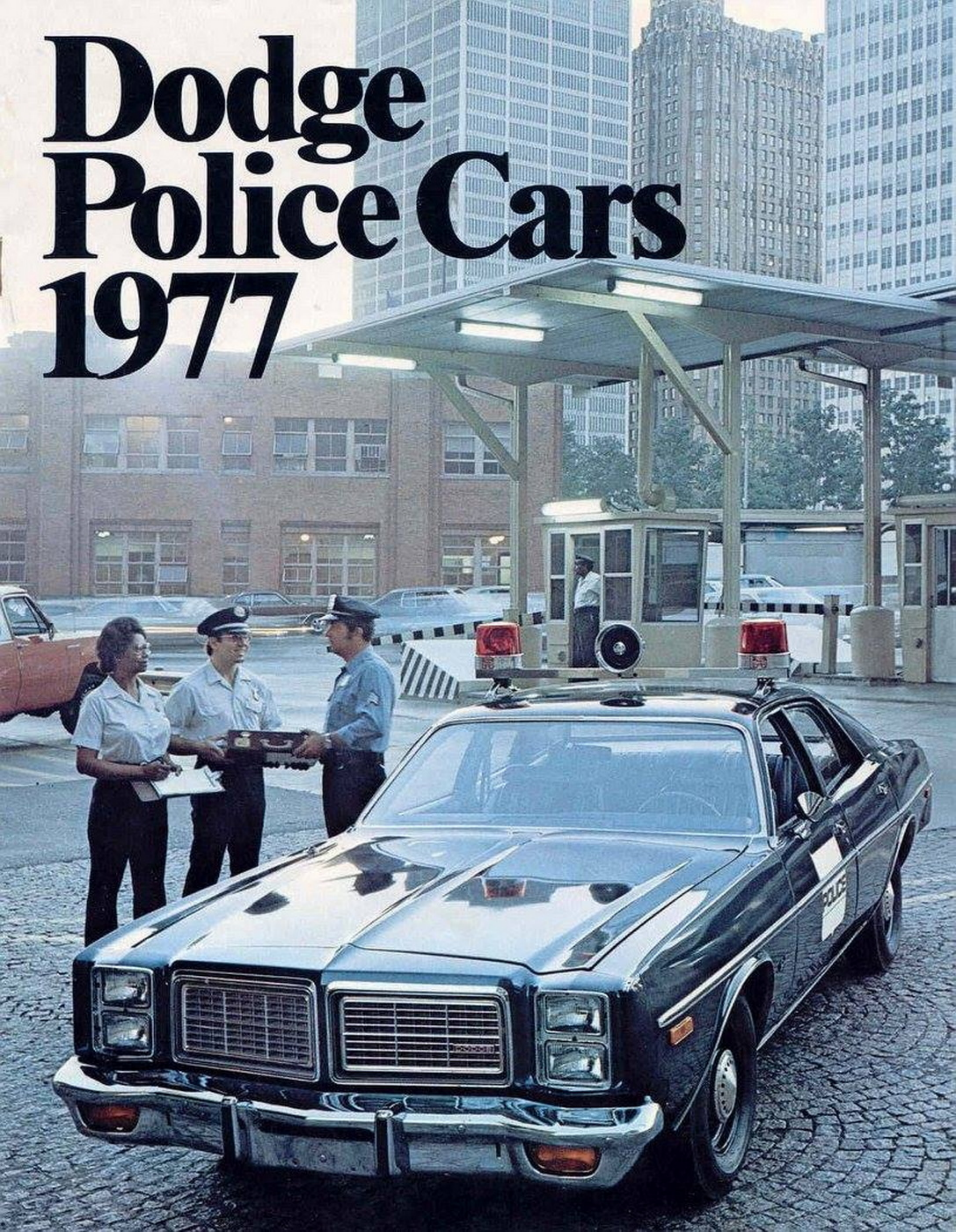


Dodge Police Cars 1977





Monaco—Dodge's new mid-size police car with a bold look and performance to match!

For 1977, Monaco comes at you with a bold new front end that features dual rectangular headlights, stacked vertically. And Monaco is available with a big 440 V-8 equipped with the Electronic Lean-Burn System*! Here's an intermediate-size police car with trim outside dimensions for good maneuverability, a choice of engines for power, and interior roominess sufficient for all-day comfort.

440 V-8 with Electronic Lean-Burn System* Makes Monaco Pursuit a Terrific Performer!

For 1977, you can order the big 440-cubic-inch, 4-barrel, heavy-duty V-8 with dual exhausts and dual catalytic converters for your Monaco Police Pursuit—and you also get the Electronic Lean-Burn system automatically in all counties outside California where altitude is under 4,000 feet. You get performance with the proved reliability of advanced

electronic engineering! The spark control computer adjusts the ignition spark timing for good responsiveness and acceleration. (This 440 heavy-duty V-8, Code E86, is available in all counties outside California where altitude is under 4,000 feet. It is also available in California, but without the Electronic Lean-Burn system.)

A 400-cubic-inch, 4-barrel heavy-duty V-8 with Electronic Lean-Burn System is also available on the Monaco Police Pursuit. This single-exhaust engine is also a tough performer—but is not available in California or at altitudes above 4000 feet.

Features of the 440 and 400 heavy-duty V-8's include:

- * Double-roller timing chain drive between the crankshaft and camshaft designed for durability.
- * Hot-pressed valve springs are engineered for better performance than ordinary valve springs.
- * Chrome-flashed exhaust valve stems have hardened tips.
- * Moly-filled top rings have excellent scuff resistance to protect both the rings and the cylinder walls.
- * Anti-turbulence windage tray between the crankshaft and oil pump reduces

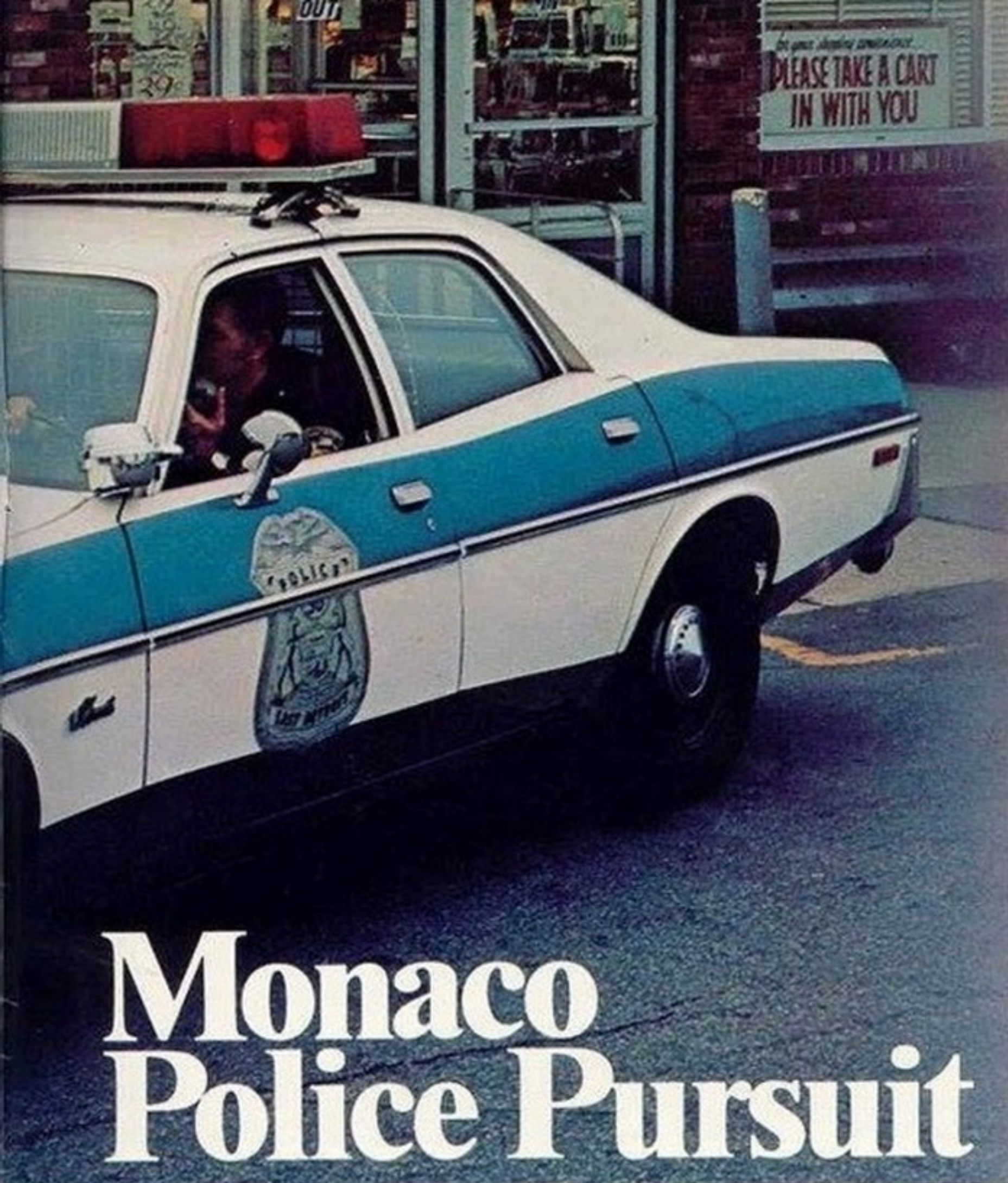
- turbulence and improves performance.
- * Crankshaft of shot-peened nodular cast iron.
- * Electronic spark advance and electronic ignition.
- * High-capacity alternator designed and manufactured by Chrysler Corporation rated at 100 amperes.
- * A 500-ampere (85-ampere-hour) Long-Life battery with thermo-guard heat shield.
- * A modular instrument panel construction allows quick, easy service operations to be performed from the passenger side of the panel.

NOTE: New heavy-duty 318 and 360 V-8 engines are also available (See page 15)

Some features of the Monaco Police Pursuit Model

The standard tire on Monaco Pursuit is a wide "70" series Police Special Radial made with two radial plies of fabric and cord and four full-width textile cord belts under the tread. Its full-width belt construction helps to reduce tread squirm and increase penetration resistance in the tread area. It was designed to meet the special needs of emergency vehicles that are subject to far

*Available on sedan models only.



Monaco Police Pursuit

Interior Trim

Standard trim for the Monaco Pursuit 4-door sedan model is a heavy-duty cloth-and-vinyl in blue (Code K1B3) or black (Code K1X9). Regular Monaco cloth-and-vinyl bench seat trim—available in blue (Code N1B3), green (Code N1F6), gold (Code N1Y3), red (Code N1E7), and parchment (Code N1L3)—is standard with the A38 Police Package and is optional on the Monaco Pursuit model. A heavy-duty vinyl trim—available in blue (Code K2B3), black (Code K2X9), and gold (Code K2Y3)—is optional with the Monaco Pursuit model and with the A38 Police Package. Bucket seats with heavy-duty vinyl trim are an available option in black (Code K6X9), or gold (Code K6Y3) for 4-door sedan Monaco Police models or A38 Package. See page 15 for complete line of police engines.

greater strain and punishment than ordinary cars. The 1977 special handling package for Monaco Pursuit includes the following heavy-duty components matched for high-speed handling: torsion bars and heavy-duty rear leaf springs with anti-brake-hop clamps, front and rear anti-sway bars, extended life upper and lower control-arm bushings and heavy-duty front (1-3/16") and rear (1-3/8") shock absorbers (Rear sway bar not available on wagons). Full gauges are provided—oil pressure, temperature, and ammeter.

Automatic transmissions are specifically matched to each engine. Furthermore, Dodge's tough, time-proved TorqueFlite automatic transmission has very little required maintenance. For instance, in Police use, band adjustment is recommended at 24,000 miles. TorqueFlite used for police duty has an auxiliary oil cooler as standard equipment.

Electronic Ignition System, standard on all Dodge models since 1973, has been proved in millions of cars over billions of miles. The electronic ignition system eliminates breaker points and condenser, which are some of the major causes of ignition tune-ups. There is no burning or arcing of points, no rubbing block to wear.



NOTE: Some items picture on this page and on other pages are extra-cost items. The tape stripes showing on the police-car illustration on these pages (2 and 3) are not available as factory installed equipment.

The command performer of the police-car set . . . big, brawny and bold, the boss of any corral!

Royal Monaco Pursuit has the credentials to make it tough to beat for any rugged police work. A big, brawny, powerful, dependable and comfortable police car—it's the pride of any police force! Everything about it is designed to make a policeman's job a little easier—to make him more efficient. Spacious interior size, foam-padded seats, large glass area for good visibility, pursuit-powered engines, advanced electronic engineering, firm and agile handling suspension and all-around dependability make it a top choice for police duty. Dodge also offers the mid-size Monaco, the compact Aspen, the Sportsman Wagon and the Tradesman van to meet your special police needs. You can depend on Dodge!

The Hard-Charging 440, Dual-Exhaust V-8 Comes Equipped with Electronic Lean-Burn System!

A long-time favorite for outstanding performance and durability, the big 440-cubic-inch, 4-barrel heavy-duty V-8 with dual exhausts and dual catalytic converters now is equipped with Dodge's advanced Electronic Lean-Burn System. It's standard equipment! An electronic computer monitors signals from seven sensors that respond to various operating conditions—then adjusts the timing of the spark plug firings for good responsiveness. This engine, Code E86, is available on the Royal Monaco Police Pursuit in all counties outside California where altitude is under 4,000 feet and in California. It is not available in counties above 4,000 feet.

A 400-cubic-inch, 4-barrel heavy-duty V-8 with single exhaust, Code E68, with the Electronic Lean-Burn System is available on Royal Monaco Police Pursuit sedans in all counties outside California where altitude is under 4,000 feet. It is not available in California or in counties above 4,000 feet.

Here are some features of the 440 and 400 heavy-duty V-8 engines:

- ★ **Aluminum-alloy main bearings** and tri-metal connecting-rod bearings provide greater durability and high temperature protection.
- ★ **High-load valve springs** with dampers on the 440 minimize valve float to provide improved engine durability and power at high speeds.
- ★ **A windage tray** between the crankshaft and oil sump reduces turbulence and improves performance.
- ★ **Exhaust valve stems** are chromed and have hardened tips for increased resistance to wear.
- ★ **Double-roller timing chain drive** between the crankshaft and camshaft is designed for greater durability.
- ★ **Dual catalytic converters**, on the 440 only, combine with the 440's dual exhaust to minimize back pressure.

Royal Monaco Police Pursuit



- ★ **Rear spark plugs** are protected by double-walled heat shields.
- ★ **The crankshaft** is shot-peened nodular cast iron.
- ★ **Exhaust manifolds** are of a thick-wall construction to improve endurance.
- ★ **Moly-filled top compression rings** have excellent scuff resistance to protect both the rings and the cylinder walls.
- ★ **100 percent silicone-insulated ignition wiring** is used because it withstands high operating temperatures.

Other outstanding features of the Royal Monaco Police Pursuit

Standard tires for Royal Monaco Police Pursuits are special "70" series wide fabric-belted radial-ply high-performance blackwall tires. They are designed to meet the police need for better handling high-performance tires with good wet traction and long tread life. They are certified by the tire manufacturers for operation up to 125 m.p.h. Police high-speed radials are made with two radial plies of fabric cord and four full-width textile cord belts under the tread. They offer long, uniform wear and positive stability. Tread pattern is designed for quick stops on wet or dry pavements. The police-proved high-capacity

alternator, rated at 100 amperes, is Chrysler Corporation-designed and manufactured—and it's standard.

The police 500-ampere (85 ampere-hour) battery, designed for long life and low maintenance, is standard.

Automatic transmissions are specifically matched to each engine. Furthermore, Dodge's tough, time-proved TorqueFlite automatic transmission helps to reduce downtime and service cost in Police use. For 1977, an auxiliary oil cooler is included with TorqueFlite for all police service.

Most Royal Monaco Pursuit models feature a Thermostatic Ignition Control valve which raises idle speed by increasing distributor advance for improved cooling under adverse conditions.

A special handling package is provided with specific suspension for pursuit-type work. The package contains the following specially matched heavy-duty components for high-speed operation: front and rear sway bar, heavy-duty torsion bars, heavy-duty rear leaf springs with anti-brake hop clamps, extended-life upper and lower control-arm bushings, and large heavy-duty front and rear shock absorbers—1-3/16" front and 1-3/8" rear.

Heavy-duty police-type brakes are used on all models. They are power disc in the



front with semi-metallic pads, and 11" x 2.5" drum-type automatic adjusting brakes in the rear. A large-capacity dual-tandem, diaphragm-type power booster and dual master brake cylinder are standard.

The power steering for police is a special unit with selected gears for minimum free play, and a special high-rate internal spring to provide a firm feel. A cooler for the power steering oil is standard. A three-spoke steering wheel with partial horn ring is standard on police models.

Interior Trim

Heavy-duty cloth-and-vinyl trim is standard on the Royal Monaco police model.

Colors available are blue (Code A1B3), and black (Code A1X9). The material offers comfort and long wear. Regular Royal Monaco cloth-and-vinyl seat trim is standard with the A38 Police Package. The trim is available in blue (Code P1B3), green (Code P1F6), gold (Code P1Y3), parchment (Code P1L3). Heavy-duty all-vinyl is available as an extra-cost option in black (Code K2X9) and gold (Code K2Y3). Heavy-duty cushion spring with foam padding and full-foam seat-back is used on the police model, heavy-duty black rubber floor mats are standard—front and rear.



A COMPLETE LINE OF SPECIAL POLICE ENGINES
designed to provide outstanding endurance is listed on page 15.

Aspen Police Pursuit

Aspen Makes it Big in a Police-Car Size of Compact Dimensions!

Aspen is tough! Aspen is economical to buy! Aspen is compact and dependable—just what the auditor ordered for the budget-minded police department! A compact 112.7" wheelbase and 201.5" overall length make it ideal for use in heavy traffic and congested areas. But on the inside, excellent comfort is provided by headroom and legroom that actually exceeds or is equal to that in some full-size cars. Aspen Pursuit sports transverse torsion-bar front suspension and multi-leaf suspension—with heavy-duty components for firm and responsive police-car handling. Unibody construction, 7-step dip-and-spray anti-rust treatments, new autophoretic anti-corrosion treatments for the front suspension crossmember combine to make Aspen both rugged and durable—a top choice for police work. Electronic ignition and electronic voltage regulator are standard. These electronic systems eliminate moving mechanical parts that were frequent causes of malfunctions. And, Dodge's Electronic Lean-Burn System is provided with the optional 360 4-barrel heavy-duty V-8 in all counties outside California where altitude is under 4,000 feet.

The 360-cubic-inch, 4-barrel, heavy-duty V-8

This is the optional engine to order for high-speed pursuit. It's the biggest and most powerful engine available for the Aspen Police Pursuit.

The high engine torque and horsepower designed into this engine give Aspen—with its compact size and modest weight—responsive acceleration. See page 15 for a complete listing of Aspen Police Pursuit engines.

More Features of the Aspen Pursuit

- ★ GR70 x 15" police fabric-belted, radial-ply black sidewall tires are standard on all V-8 models. These tires have two radial plies of fabric cord and four full-width textile cord belts under the tread. They are designed to withstand the rigor of high-speed driving, while giving positive stability and long uniform tire wear.
- ★ Heavy-duty suspension. This includes front torsion-bar springs, heavy-duty multi-leaf springs, heavy-duty 1-3/16"-diameter shock absorbers (front and rear) and a front anti-sway bar. A rear anti-sway bar is also provided for V-8 models.

- ★ Heavy-duty power brakes: disc front brakes with semi-metallic front brake pads; 11" x 2.5" rear drum brakes with automatic brake adjusters. A dual master cylinder gives separate control for front and rear braking systems. A special front-rear proportioning valve is used for police duty to match the semi-metallic front brake pads.
- ★ Special, firm police power steering with oil cooler is standard with V-8 models. Firm power steering is optional with 6-cylinder models.
- ★ Certified calibrated speedometer marked in 2-mile-per-hour increments up to 120 mph.
- ★ 65-ampere Chrysler heavy-duty alternator.

Interior Trim

Durable, easy-to-clean all-vinyl interior trim is available in three colors: blue (Code B2B3), green (Code B2F6), and parchment (Code B2L3). Heavy-duty full-foam is used for the front seat cushion for custom comfort.

The front seat-back is also full foam. Heavy-duty black rubber floor mats for front and rear passenger compartments are standard on the police model. Front and rear armrests are included.



Dodge Engineering know-how is the difference in Police Pursuits

Electronic Lean-Burn System with its electronic spark advance is one of the most important developments in engine control since the early 1930's, when manual spark control was replaced by the automatic spark advance. Seven sensors and an electronic computer combine to adjust spark advance precisely for all driving conditions. This results in the following improvements to engine operation:

- ★ Smooth engine warm-ups
- ★ Improved engine performance and acceleration
- ★ Improved smoothness in all phases of engine operation—regardless of weather conditions
- ★ Reduced emissions—even before they reach the exhaust system
- ★ Less hoses and other emission-control "hardware"
- ★ Reduced maintenance

Electronic components are more dependable

Dodge and Chrysler Corporation are moving ahead in electronics because the solid-state components are more accurate and more dependable than mechanical parts. Electronic components have no moving mechanical parts and no friction to cause wear or malfunctions.

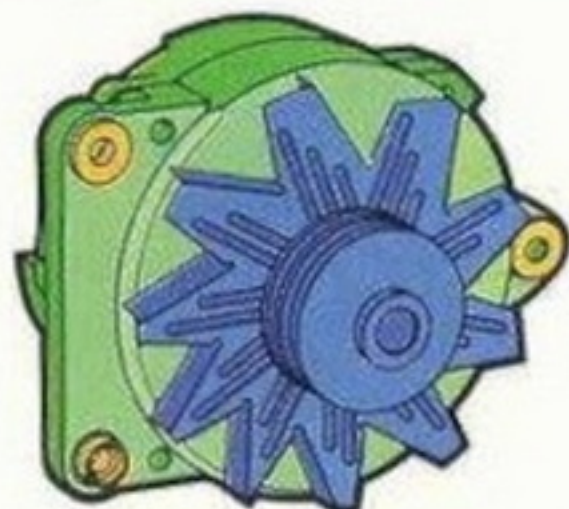
Electronic Ignition System Standard on all Pursuits. Standard since 1973, the electronic ignition system has been proved in hundreds of thousands of cars over millions of miles.

Chrysler Corporation was the first manufacturer to make an electronic ignition system standard on all its passenger cars made in North America.

The electronic ignition system eliminates breaker points and condenser, which are the major causes of ignition tune-ups. There is no burning or arcing of points, no rubbing block to wear.



The electronic voltage regulator has no moving parts and is much more reliable than the electromechanical regulators used previously. Records show that 98% of the electronic voltage regulators installed at the factory on Dodge models functioned properly with no replacement and no problems during the warranty period. And the circuitry of the electronic voltage regulator is sealed in tough epoxy, making it shock resistant, moisture resistant and extremely durable.



Heavy-duty 100-ampere alternator. A Chrysler Corporation-designed and manufactured alternator, rated at 100 amperes, is standard on Royal Monaco and Monaco Police Pursuits. The alternator was designed for rugged fleet use with plenty of output at all engine speeds to handle the car's electrical load. The alternator features large-diameter brushes which are protected from dirt and grease and serviceable from the outside. Twin diodes (a total of twelve) in parallel improve current-carrying capability. High-temperature-resistant, improved rubber mountings provide quiet operation. Four through bolts join the large, two-section solid casting frame. The alternator has a large front ball bearing and a rear roller bearing. The rotor uses high-temperature windings and tough sleeving insulation. A heavy-duty 65-ampere Chrysler-built alternator is standard on Aspen Pursuit. The voltage regulator is solid state with no moving parts.

Aspen's unique transverse heavy-duty torsion-bar front suspension represents a new advance in suspension engineering tailored to the compact size of the Aspen Police Pursuit. Coupled with heavy-duty multi-leaf rear springs and heavy-duty shock absorbers—all rubber isolated from the car body—contribute to ride stability, smoothness and handling responsiveness. Front and rear anti-sway bars are used on Aspen V-8 models; front anti-sway bar only on Aspen Sixes. Monaco and Royal Monaco Police Pursuits also have heavy-duty suspension components: longitudinal torsion-bar front springs, multi-leaf rear springs with anti-brake-hop clamps, front and rear anti-sway bars, heavy-duty shock absorbers (1-3/16"-diameter front and 1-3/8"-diameter rear), and extended-life upper and lower control-arm bushings.

A new ignition switch with a 50% greater load-carrying capacity than the switch used previously. It is used on '77 police models. The larger capacity results in the reduced resistance and improved electrical performance. When the new ignition switch is in the "accessory" position, the heater, defroster and air conditioner are off, but the radio, gauges and wiper continue to operate.

A coolant reserve system guards against overflow loss of coolant that can lead to overheating. The level may be checked without removing the cap.

Automatic high-pressure safety cut-off switch on all air-conditioned Police models protects the air-conditioning system from overload during prolonged idle.

Automatic air-conditioner high-speed cut-off switch (on all air-conditioned Police models and A38 Packages equipped with E58, E68, or E86 engines) automatically disengages the compressor at high speeds to reduce engine load and to prevent over-speeding of the compressor.

Power steering used on Police Pursuits and Police Packages has a special firm feel and minimum free play on center. A power steering oil cooler has been added as standard on Royal Monaco, Monaco and Aspen V-8 Pursuits to maintain lower system temperatures. The return hose is made of high-temperature-resistant hypalon rubber. Manual steering is standard on Aspen 6-cylinder models.

A 500-ampere (85 ampere-hour) battery is standard on all police models and packages and is especially suitable for heavy-duty police use. This battery has premium features including heavier plates than those on ordinary batteries, and rubber plate separators with protectors. It has excellent cold-performance characteristics.

Insulated plastic battery heat shield, standard on Royal Monaco, Monaco and Aspen models, allows cool outside air to flow around the battery and reduces the effects of high underhood temperatures. The shield slides over the battery and has top openings that permit battery cable attachments and water level checks.



Wide, heavy-duty wheels, 15" x 6.5JJ are standard on all Monaco and Royal Monaco Pursuits. Aspen police models use 15" x 6.5JJ on V-8 models and 14" x 5.5JJ on six-cylinder models.

Hydraulic, impact-absorbing bumper system, front and rear, is standard on all Dodge Pursuits.

Standard brakes on all Pursuits are power-assisted heavy-duty power front disc with special semi-metallic disc pads. A dual tandem diaphragm power booster is standard on Monaco and Royal Monaco; a single diaphragm in booster on Aspen. Rear brakes are drum-type with self-adjusters, 11" x 2 1/2" on all models.

A 9 1/4" axle assembly used on all Dodge Royal Monaco and Monaco Pursuits (8 1/4" on Aspen) has straight roller wheel bearings. The wheel bearings are easy to service. This design guards against the chances of lubricant leakage or water entry.

Dodge Wagons & Vans

Workhorses of dependability ... for maximum versatility and agility

If you want to carry a lot of people, ask for the Dodge Sportsman Wagon which can seat up to 15 people. If you want to carry a lot of cargo or need a versatile emergency unit, ask for the Dodge Tradesmen Van. Windowed wagons are designated as Sportsman models. The vans are Tradesman models. Either way, you have a lot going for you.

You can order optional extra windows for the sides and rear of the Tradesman van. And you can specify a "Maxi" body length that provides a full 10½ feet of load space to accommodate sizeable loads or provide room for two stretchers.

A bucket seat for the driver is standard on Tradesman—with a front passenger available as an extra-cost option. Deluxe bucket seats for both the driver and front-seat passenger are optional.

Sportsman wagons (also in the same Dodge B-model lineup) can be ordered with a standard seating capacity of five, optional seating for eight or twelve—and, in the Maxiwagon, seating for up to 14 passengers plus driver. In addition to the standard Sportsman, there are three extra-cost optional trim packages (Custom, Royal and Royal S.E.). Trim comes as plain or fancy as you like, inside and out.

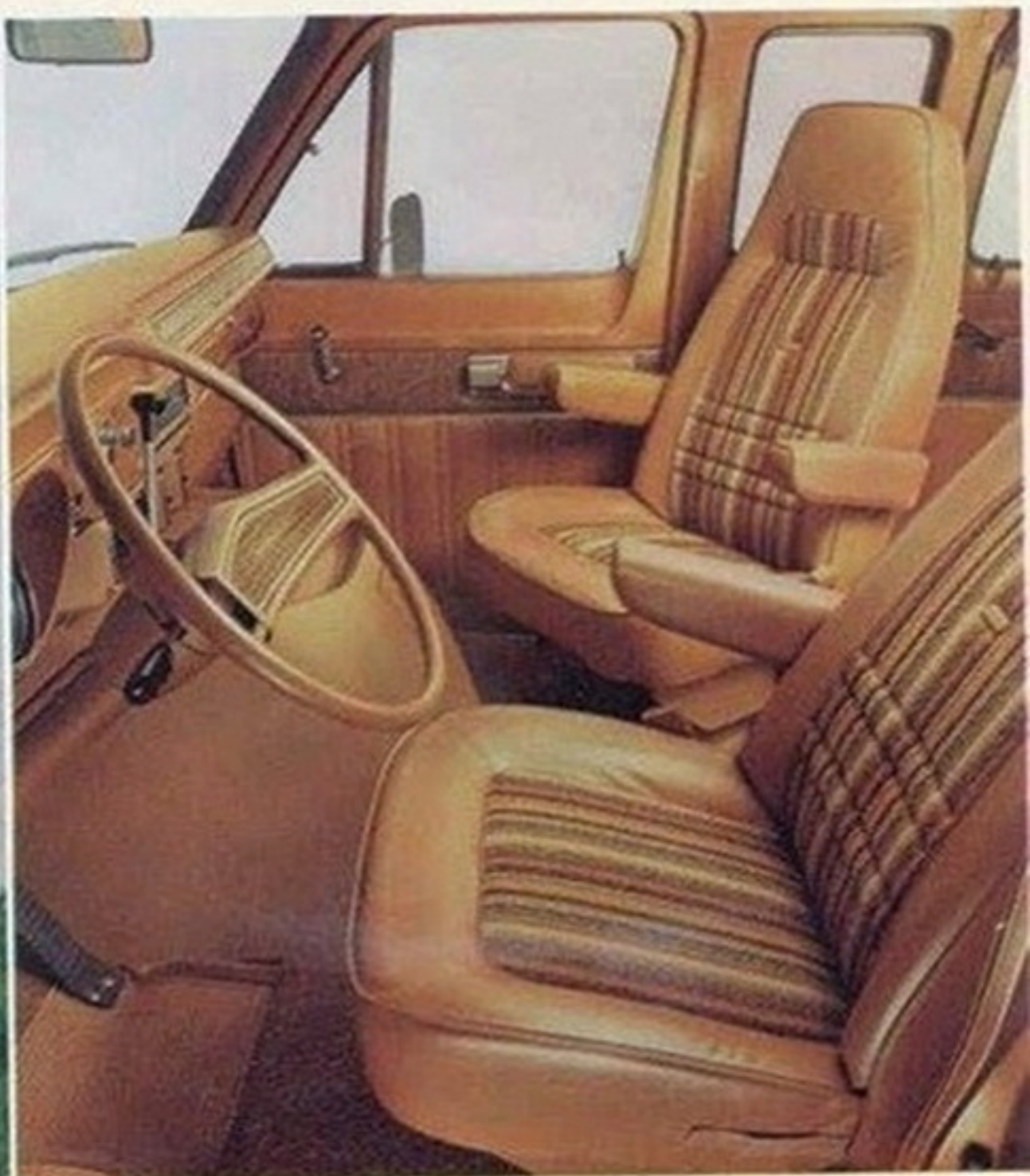
The new Royal Sportsman S.E. with parchment or saddle interior, is the premium wagon trim.

An easy-to-use, high-visibility single rear door with one-piece glass is standard on all

Sportsman models. The door works like a regular door and can be opened to a 90° position and then closed with one hand. It features a one-position check to hold it fully open, and the door is well-balanced for ease of operation.

On all Tradesman van models and all Sportsman wagons, you can order an optional 36-gallon fuel tank at extra cost—giving you a capacity of 14 more gallons than the standard tank. Both Tradesman van and Sportsman wagon 127-inch-wheelbase models offer an extra-cost optional sliding side door. The door allows the vehicle to be parked alongside a building and still permit easy entry and exit. With this door, you can park the vehicle tightly against the building for maximum security.





Both Sportsman and Tradesman offer a driver's command position that is higher than a passenger car's. This means he has a better view of the road and is especially useful on emergency runs. The Royal Sportsman interior is shown above.

Dodge does not manufacture or install special equipment such as shown here. But it can be ordered from a number of different suppliers. Check with your Dodge Dealer who will be happy to advise you.

1977 Dodge Police Fleet Equipment

Standard Equipment for Police Models and A38 Police Packages

	Aspen	Monaco	Royal Monaco		Aspen	Monaco	Royal Monaco
Air Cleaner—Dry-type replaceable element unsilenced	X	X	X	Mirrors—Inside Day/Nite	X	X	X
Alternator—100-ampere heavy-duty Chrysler with heavy-duty transistorized regulator		X	X	Outside left, manual, door mounted	X	X	X
—65-ampere heavy-duty Chrysler	X			Oil Filter—Full-flow throw-away	X	X	X
Ammeter—100-ampere		X	X	Parking Brake Warning Light	X	X	X
Antifreeze for minus 35° F	X	X	X	Power Steering, firm-type Police		X	X
Armrests, front and rear	X	X	X	Power Steering Pump Cooler (8-cylinder only) with power steering	X	X	X
Ash Receivers, rear		X	X	Seat-Back, Front—Full foam	X	X	X
Axle Ratio—3.21(See axle chart)				Seat Belts—3 front and 3 rear, with integral belts front, outboard left and right	X	X	X
Battery—500 ampere (85 ampere-hours) with Thermo-Guard heat shield	X	X	X	Seat Cushion, Front—Heavy-duty	X	X	X
Brakes—Dual master cylinder all models Heavy-duty Police-type semi-metallic, disc front, drum rear, automatic-adjusting (Includes dual tandem booster on Monaco and Royal Monaco—except Monaco wagons)	X	X	X	Special Handling Package—Designed and engineered for pursuit-type work. Includes heavy-duty front and rear sway bar (except wagons), torsion bars, heavy-duty rear springs, and heavy-duty shock absorbers 1-3/16" front and 1-3/8" rear		X	X
Coolant Recovery System	X	X	X	Structural Reinforcement and additional welds	X	X	X
Cooling—Max. capacity radiator, 7-blade fan and fan shroud. Flex-type fan or thermal torque-drive fan	X	X	X	Suspension, Heavy-Duty—Includes front sway bar, torsion bars, heavy-duty rear springs and heavy-duty shock absorbers, 1-3/16" front and rear	X		
Electronic Ignition System	X	X	X	Above suspension with rear sway bar (V-8 only)	X		
Engines (See chart)				Special Heat Reflective Rubber Splash Shield, right side		X	X
Engine Mount—Spool type	X	X	X	Speedometer—Certified calibrated 120 mph.	X		
Gauge—Oil pressure	X	X	X	Speedometer—Certified calibrated 140 mph.	X	X	X
Grass Shield for catalytic converter	X	X	X	Stop Light Switch—Heavy-duty	X	X	X
Heater with Defroster	X	X	X	Thermostatic Ignition Control Valve, V-8 engines (except 318 and 400 V-8's in all counties under 4000 feet except California)	X	X	X
Horns—Dual	X	X	X	Tires (See chart, page 14)	X	X	X
Horn Ring—Partial	X(1)	X(1)	X(1)	Transmission, Auxiliary Oil Cooler	X	X	X
Inside Hood Release	X		X	Transmission—Automatic TorqueFlite, 3-speed	X	X	X
Interiors, Royal Monaco—Heavy-duty cloth-and-vinyl trim in blue or black			X(1)	Windshield Wipers—2-speed and electric washers	X	X	X
Interiors, Monaco—Heavy-duty cloth-and-vinyl trim in blue or black		X(1)					
Interiors, Aspen—All-vinyl trim in blue, green, or parchment	X						
Mat—Heavy-duty, black rubber, front and rear	X(1)	X(1)	X(1)				

Optional Equipment for Police Models and A38 Police Packages

	Aspen	Monaco	Royal Monaco		Aspen	Monaco	Royal Monaco
Air Conditioning	X	X	X	Mirror—Inside, day-nite	X		X
Alternator, 100-Ampere (8-cylinder models)	X			Parking Brake Release, Automatic			X
Deck Lid—Remote Release, Electric (Control on instrument panel)	X	X	X	Power Steering, Police firm type	X(2)		
Defroster—Rear window—electric heated	X	X	X	Radio Cable Conduit (1-5/8" diameter)	S.O.	X	X
Defroster—Rear window—blower type	X	X	X	Radio Suppression Package	X	X	X
Differential—Sure-Grip, 3.21 or 2.71			X	Roof Reinforcement Plate	X	X	X
3.21 only	X	X		Seat—Heavy-duty rear including foam cushions (with heavy-duty vinyl trim only on Monaco)	X	X	X
Engine Oil Cooler (with E58, E68 and E86 V-8 engines only)	X	X	X	Spotlight, white bulb #4435			
Engines (See chart)				A-pillar mounted 6" left	X	X	X
Fast-Idle Throttle Control—Manual locking type	X	X	X	A-pillar mounted 6" right	X	X	X
Floor Pan Sound Insulation (Same as standard Monaco V-8)		X(1)		Stainless-Steel Hose Clamps—Screw-type	X	X	X
Gauge—Oil and temperature assembly (Not available with clock)			X	Tinted Glass—All windows	X	X	X
Hood Release, Inside		X		Trim, Royal Monaco Heavy-duty all-vinyl in gold or black		X	
Keys—Single—Same key for all locks on car, different key for each car	X	X	X	Monaco—Heavy-duty vinyl in gold, blue or black		X	
Keys—Universal single system—Same key for all locks on cars, same key for all cars in fleet	X	X	X	Aspen—Heavy-duty vinyl in black, blue or parchment	X		
Locking Gas Cap	X	X	X	Heavy-Duty Floor Mats, black only (Standard on Police models)	X	X	X
Mirror—Right outside, manual (to match left remote-control mirror style)		S.O.	X	Steering Wheel with partial horn ring, black only (Standard on Police models)	X	X	X
Mirror—Right outside, remote. (Available only in combination with left remote outside mirror)	X	X	X				

(1) Police model only. (2) Standard on V-8.
Note: "S.O." indicates item is available only on special order.

SPECIAL-ORDER ITEMS

You can tailor your Dodge Pursuit to fit your needs exactly...from the list below:

You can equip your police car (models and packages) with special-order items not included in the list of regular production options on page 10. Special-order items normally require more lead time for delivery. Also, they usually can be made available only on larger quantity orders. Dodge has standardized some of the most popular special-order items to minimize building time and order size requirements. Such items are included in the following chart. If you accept a particular item or items as listed, we can meet your needs quickly and accurately.

From the lists below, you can tailor your Dodge Pursuit car to exactly fit your needs.

Item	Aspen	Monaco	Royal Monaco	Minimum Quantity Order
Special Order Paint. A new Production and Fleet Paint Selector is available to assist those customers who require a broader spectrum of paint colors than that offered to retail customers. These colors represent historically high-volume usage by major fleet accounts due to volume usage, these paints are readily available to our assembly plants on a competitive cost basis, resulting in faster production and vehicle deliveries. Price information is available at any Chrysler Corporation Zone or Fleet Sales Office.	X	X	X	None
Special instrument panel radio speaker with either 4- or 8-ohm nominal voice coil impedance. Includes 36" lead wires attached to speaker	X	X	X	None
Special Horn and Siren Switch on instrument panel to permit driver to select horn or electronic siren operation from the horn ring. Includes single wire routed to center of instrument panel for agency connection to electronic siren controls.	X	X	X	5
Special bulb versions of Unity model 225 Spotlights are available on sedans and wagons only as follows: 1. 4436R Red bulb—right and/or left 2. 4537 Aircraft-type bulb right and/or left NOTE: For less than 10, order regular 6" spotlight option and change bulb.	X X	X X	X X	10 10
Additional domelight (with switch) located directly to rear of sun visor bracket. Operates in conjunction with standard dome light. Available for sedans and wagons only. (Regular police option for Royal Monaco)	X	X		None
Special provisions to assist in field installation of police radio communication equipment, specify one of the following: 1. Motorola Antenna TAD 6113 type. Wand and attaching parts shipped loose. Antenna is located approximately 15 inches forward of rear window. (Sedans only) 2. Special Antenna Cable RG 58 A/U routed from a point approximately 15 inches forward of the rear windows, down the right pillar to the luggage compartment. Does not include a hole in the roof. (Sedans only) 3. Special draw cord located and routed same as antenna cable. Permits easy transfer of agency antenna from one car to another without dropping headlining. Does not include hole in roof. (Sedans only) 4. Special radio conduit 1.63" I.D. Routed inside of car along right side from luggage compartment to right side of dash panel (firewall). Sedans only.	X X X X	X X X X	X X X X	5 None None None
Exhaust system bonding, includes four braided bonding straps per side. Engine to body ground is standard on all cars	X	X	X	5
Red Auxiliary Stop and Turn Lights (turn lights only on Monaco) 4" diameter mounted on rear window shelf panel. Includes wiring and switch to control lights from driver's position	X	X	X	5
Special Roof Wiring and Wiring Access Holes to facilitate field installation of agency's emergency roof light system are available on sedans as follows: 1. Roof Wiring Hole Options A. A 5/8"-diameter roof hole located on centerline of car 15" to rear of upper windshield molding is recommended. An alternate hole location at 19" for compact or intermediate and 22" for full-size cars is also available. B. A single 5/8"-diameter hole located on left side of car approximately 6" inboard of drip rail and 26" to rear of upper windshield molding measured on centerline of roof. NOTE: Holes are weatherproofed for car shipment only. 2. Wiring A. Single 12-gauge wire routed from roof (with or without roof hole) to junction of right front pillar post and instrument panel. Wiring will be coiled in a 6" coil and spot-taped to roof at same location as roof holes. Specify location B. Four 12-gauge wires routed same as single 12-gauge in 'A'. Can be used in lieu of 18-, 16- or 14-gauge requirements. C. Combination of two 16-gauge and two 12-gauge wires with a molded grommet, routed same as 'A'. Requires roof hole. Specify location from roof hole section above. Grommet weather-proofs installation to eliminate water entry around wires.	X X X X	X X X X	X X X X	None None None None

1977 Tradesman Van

Standard and Optional Equipment

Standard Equipment

Alternator	48-ampere (Chrysler 41 ampere)
Axle, Front—B100	Capacity 2700 pounds
B200	Capacity 3100 pounds
B300	Capacity 3300 pounds
Rear—B100	Capacity 2700 pounds
B200	Capacity 3600 pounds
B300	Capacity 5500 pounds
Battery	12 volt, 48 ampere-hour
Brakes	
—B100—11.75" x 1.25" front disc, 10" x 2.5" rear drum	
—B200—11.75" x 1.25" front disc, 11" x 2.5" rear drum	
—B300—12.82" x 1.19" front disc, 12" x 2.5" rear drum	
Brakes, Power on B200 and B300	
Emission Control System	
Air Cleaner	Dry type
Clutch—6 cylinder—B100	
and B200 models with 6000 pounds G.V.W.	100.6 square inches
—8-cylinder—All models	123.7 square inches
—6-cylinder—B200 (except 6000 pounds G.V.W.) and all B300 models	123.7 square inches
Electronic Ignition System	
Engines—6-cylinder, All models (Not available on B300 in California)	225, Chrysler
—8-cylinder, All models	318, Chrysler
Fuel Tank	Capacity, 22 gallons
Instruments	Fuel, Ammeter, Temperature Gauges, Oil Pressure Light and Speedometer
Mirrors, Exterior	5" x 7" dual, painted
Oil Filter	Throwaway type
Shock Absorbers	Front and rear
Springs, Front—Coil—B100	Capacity, each at pad/at ground
For 109" wheelbase 6-cylinder models	1100/1240
For 127" wheelbase 6-cylinder models	1200/1340
For all 8-cylinder models	1200/1340
Springs, Rear—B100	Capacity, each at pad/at ground
For all models	1000/1170
Springs, Front—Coil—B200	Capacity, each at pad/at ground
For 109" and 127" wheelbase models	1400/1540
Springs, Rear—B200	Capacity, each at pad/at ground
For all models	1600/1810
Springs, Front—Coil—B300	Capacity, each at pad/at ground
For all models	1400/1570
Springs, Rear—B300	Capacity, each at pad/at ground
For all models	1750/2020
Steering, Manual	Chrysler
Tires (5)—B100	Bias-belted blackwall tubeless
Size Front, Rear and Spare	
—109" wheelbase	E78-15-B (4PR)
—127" wheelbase	E78-15-B (4PR)
Wheels and Rims (5)	15" x 5.50", 5-stud disc
Tires (4)—B200	Tubeless blackwall truck tubeless
Size Front and Rear	H78-15-B (4PR)
Wheels and Rims (4)	15" x 5.50", 5-stud disc

Tires (4)—B300	Tubeless blackwall truck type
Size, Front & Rear	
—Vans—109" and 127" wheelbases	8.00-16.5-C (6PR)
—Maxivans	8.00-16.5-D (8PR)
Wheels and Rims (4)	16.5" x 6" 8-stud disc
Transmission	3-speed manual
Windshield Washers	Wiper-arm mounted
Windshield Wipers	Two speed

Additional Standard Equipment

Antifreeze • Armrests, two • Brake warning light • Bumper, front and rear, painted • Cargo doors, double-right side and rear, no glass • Door lock (All doors) • Glove box • Heater, fresh air with defrosters • Horn, single electric • Hubcaps, painted • Jack, bumper type (B100 and B200) axle type (B300) • Directional signals, Class "A" combined in parking and tail-lamps—front and rear • Dome light, driver and cargo comp. • Combined side marker lights and reflectors (2) front, amber, (2) rear, red • Backup lights • Four-way emergency flasher • Seat, driver only, bucket type with seat belt and retractor • Spare tire carrier • Sun visor, padded left side.

Selected factory-installed extra equipment

Air Conditioning	Includes 63-ampere alternator, deluxe heater, increased cooling, insulation package and instrument panel padded. Requires tinted or Sun Screen glass and heavy-duty front springs. Not available with 6-cylinder engine models.
Alternator	63-ampere (Chrysler, 60) (included with air conditioning and Trailer-Assist Package)
Automatic Speed Control	Available with 8-cylinder engines and automatic transmission only
Battery	59 ampere-hour (included with 360 and 400 engines) 70 ampere-hour (included with 440 engine or Trailer-Assist Package)
Brakes, Power for B100 (Standard on B200 and B300 models)	
Bumper	Front and rear, bright finish (Included in Custom Exterior Package)
Cigar Lighter (Included in Convenience and Custom Exterior Packages)	
Cooling, Increased	For all models (Included with air conditioning or Trailer-Assist Package)
Clutch	11" diameter for use with 225 engine—B100
Door Check Arms	90° opening position for hinged side and rear cargo doors
Door, Single Rear, Includes fixed glass, 90-degree door check arm, 10-inch day/night interior rearview mirror and 90-degree opening position, check arm. Replaces standard solid rear doors.	
Door, Sliding Cargo—Right side on 127" wheelbase models only	
Engines:	
360-cubic-inch V-8—All models	
400-cubic-inch V-8—B200 and B300 models (Not available in California)	
440-cubic-inch V-8—B200 and B300 models	

Factory-installed equipment (continued)

Emission Reduction Control System—Available with 6- and 8-cylinder engines on all models. (Mandatory in the State of California—400 V-8 not available in California)

Fuel Tank—36-gallon capacity for all models. Replaces standard tank.

Gauge, Oil Pressure

Glass, Tinted

Windshield and front doors

All windows for vision vans

Glove Box Door and Light

Headliner Cargo compartment

Heater Deluxe high-output heater replaces standard

Requires 63-ampere alternator (Included with air conditioning)

Heater Auxiliary in cargo compartment

Requires 63-ampere alternator

Horns Dual electric

Hubcaps Bright finish

Instrument Panel, Padded (Included with air conditioning)

Lights

Cargo-door-operated dome light switch for rear and right side cargo doors

Mirror, Exterior Dual 5" x 7" short arm bright finish

Dual Lo-Mount Type painted

Dual Lo-Mount Type bright finish

Moldings, Exterior Upper side and front exterior molding package

Lower side and rear exterior package

Upper side, front and rear and lower side and rear exterior molding package

Package, Convenience Includes ignition time delay light, cigar lighter and light, courtesy light front door, in-cab-actuated hood release lock

Package, G.V.W.⁽²⁾

4800 Pounds—109" and 127" Wheelbases B100

5500 Pounds—109" and 127" Wheelbases B100

6000 Pounds—109" and 127" Wheelbases B200 (Calif. only)

6400 Pounds—109" and 127" Wheelbases B200

7000 Pounds—109" and 127" Wheelbases⁽¹⁾ B300

7700 Pounds—109" and 127" Wheelbases⁽¹⁾ B300

8200 Pounds—127" Wheelbase⁽³⁾ B300

(1) Requires automatic transmission with 6-cylinder engine.

(2) See your local Dodge Dealer for content.

(3) Requires automatic transmission with all engines.

Package, Insulation Includes front floor mat with insulation in driver's compartment, insulated headliner in driver's compartment

Package, Lock Includes 2 keys—1 for ignition and front doors and 1 for side and rear doors

Package, Trailer-Assist Includes heavy-duty variable-load flasher, 70-ampere-hour battery, increased cooling, 63-ampere alternator and wiring harness for all models. (See your local Dodge Dealer for required equipment)

Package, Trailer-Assist, Heavy-Duty Includes all items in above package plus heavy-duty shock absorbers front and rear. Available on B200 and B300 models only. (See your local Dodge Dealer for required equipment)

Paint Two-tone—Procedure 1, 2, or 3

Seats

Driver and Passenger, low-back with standard vinyl trim—non-adjustable, bucket type

Driver, low-back with deluxe vinyl trim, bucket type—replaces standard driver's seat

Driver and Passenger, low-back with deluxe vinyl trim—adjustable, bucket type

Driver and Passenger, Command Seats with cloth and vinyl trim—adjustable, bucket type—available with non-swivel seats, which include inboard, fold-down armrests; or with swivel seats, which include inboard armrest on driver's seat, dual armrests on passenger seat.

Shoulder Belts Driver

Driver and passenger

Shock Absorbers Heavy-duty 1½" diameter front and rear (Included in Heavy-Duty Trailer-Assist Package)

Springs, Front, Heavy-Duty—Capacity at Ground

B100 Models

1340 pounds capacity for 109"-wheelbase models with 6-cylinder engine, 4600 and 4800 pounds G.V.W.

1540 pounds capacity for 127"-wheelbase models with all engines, 4600 and 4800 pounds G.V.W.

1540 pounds capacity for 109"-wheelbase with all engines, 5500 pounds G.V.W.

B200 Models

1615 pounds capacity for 109"- and 127"-wheelbase models with 225, 318 and 360 engines, 6100 and 6400 pounds G.V.W.

1615 pounds capacity for 109"- and 127"-wheelbase models with 225 engine, 6000 pounds G.V.W. (State of California only)

1720 pounds capacity for 127"-wheelbase models with 400 and 440 engines, 6100 and 6400 pounds G.V.W.

B300 Models

1645 pounds capacity for 109"- and 127"-wheelbase models with 225, 318 and 360 engines, 6400 and 7000 pounds G.V.W.

1720 pounds capacity for 109"- and 127"-wheelbase models with 225, 318 and 360 engines, 7700 pounds G.V.W.

1725 pounds capacity for 109"- and 127"-wheelbase models with 400 and 440 engines, 6400 and 7000 pounds G.V.W.

Springs, Rear, Heavy-Duty—Capacity at Ground

B100 Models

1480 pounds capacity for 109"- and 127"-wheelbase models and 4600 pounds G.V.W.

1660 pounds capacity for 109"- and 127"-wheelbase models and 4800 pounds G.V.W.

1810 pounds capacity for 109"- and 127"-wheelbase models and 5500 pounds G.V.W.

B200 Models

1930 pounds capacity for 109"- and 127"-wheelbase models and 6100 pounds G.V.W.

1930 pounds capacity for 109"- and 127"-wheelbase models with 225 engine and 6000 pounds G.V.W. (State of California only).

B300 Models

2570 pounds capacity for 109"- and 127"-wheelbase models and 6400 and 7000 pounds G.V.W.

Steering, Power

Transmission 3-speed automatic A727 LoadFlite

Wheel Covers Bright finish Class II B100 or B200 only

Model	Tire and Ply Rating	Wheel Size
B100	E78-15-B (4PR)	15" x 5.50"
	F78-15-B (4PR)	15" x 5.50"
	G78-15-B (4PR)	15" x 5.50"
	G78-15-D (8PR)	15" x 5.50"
	H78-15-B (4PR)	15" x 5.50"
	HR78-15-B* (4PR)	15" x 6.50"
B200	LR78-15-B* (4PR)	15" x 6.50"
	H70-15-B (4PR)	15" x 6.50"
	7.00-15-C (6PR)	15" x 6.50"
	H78-15-B (4PR)	15" x 5.50"
	G78-15-D (8PR)	15" x 5.50"
	L78-15-B (4PR)	15" x 6.50"
B300	L78-15-C (6PR)	15" x 6.50"
	HR78-15-B* (4PR)	15" x 6.50"
	LR78-15-B* (4PR)	15" x 6.50"
	LR78-15-C* (6PR)	15" x 6.50"
	H70-15-B (4PR)	15" x 6.50"
	7.00-15-C (6PR)	15" x 6.50"
B300	8.00-16.5-C (6PR)	16.5" x 6.00"
	8.00-16.5-D (8PR)	16.5" x 6.00"
	8.00-16.5-E (10PR)	16.5" x 6.00"
	8.75-16.5-E (10PR)	16.5" x 6.75"

* Steel-belted, radial-ply tires.

Code A38 Dodge Police Packages

Dodge Police Pursuit models are limited to Royal Monaco, Monaco and Aspen 4-door sedans. If you want a choice of body styles and trim levels, specify the Police Package Code A38 option on any of the following models: NL41 Aspen sedan, NH41 Aspen Custom, WL23 Monaco 2-door hardtop, WL41 Monaco 4-door sedan, WH23 Monaco Brougham 2-door hardtop, WH41 Monaco Brougham 4-door sedan, WL45 Monaco wagon, WH45 Monaco Crestwood wagon, DM23 Royal Monaco 2-door hardtop, DM41 Royal Monaco 4-door sedan, DH23 Royal Monaco Brougham 2-door hardtop, DH41 Royal Monaco 4-door sedan, DM45 Royal Monaco wagon and DH45 Royal Monaco Brougham Wagon. (DM45 and DH45 wagons are not available in California or in areas above 4,000 feet altitude).

See pages 10 and 11 for A38 package contents.

NOTE: Heavy-duty black rubber floor mats, front and rear, and black steering wheel with partial horn ring, are not included in packages, but may be ordered separately, if desired. Heavy-duty seat springs are not available with power seats.

Important tire note!

Chrysler Corporation recommends that only police-type tires certified for high-speed use by the tire manufacturer, and approved for handling by the car manufacturer, be used on vehicles that may be driven at speeds above 100

m.p.h. It has been determined that at such speeds vehicles equipped with tires that are not certified for high-speed endurance and handling may experience tire failure or instability. Sustained speeds over 100 m.p.h. may cause a standard steel-belted radial tire to disintegrate suddenly without prior warning which could result in loss of vehicle control.

Currently available standard original-equipment-type tires are satisfactory at speeds under 100 m.p.h. If there is any chance that your vehicles will be driven at speeds over 100 m.p.h., we recommend that you use only approved certified high-speed-type tires.

Certified high-speed radial tires with fabric belts are standard on all our 1977 police eight-cylinder models and packages (except Royal Monaco wagons), and are available on police wagon and Monaco six-cylinder sedan packages. These tires have been tested by Chrysler for good handling characteristics on our police models and packages.

A rear sway bar to provide optimum handling with radial tires is standard on all police models and packages (except Monaco and Royal Monaco wagons and six-cylinder Aspen).

If bias, or bias-belted-type tires are installed, it is recommended that the rear sway bar be removed because of adverse handling effects with these types of tires.

Police-Type Tires and Wheels

TIRE SIZE	TYPE	225	318	360	400	440	Wheel Size
Aspen Police Model Sedans and Aspen Sedans with A38 Package							
E78 x 14 (B)	1	Std.	—	—	—	—	14" x 5.5JJ
GR70 x 15	2	S.O.	Std.	Std.	—	—	15" x 6.5JJ
Monaco Police Model Sedans and Monaco Sedans with A38 Package							
GR70 x 15	2	Std.	Std.	Std.	Std.	Std.	15" x 6.5JJ
HR70 x 15	2	Opt.	Opt.	Opt.	Opt.	Std.(A)	Heavy-duty
Monaco Wagons with A38 Package							
HR70 x 15	2	—	—	Std.	Std.	—	15" x 6.5JJ Heavy-duty
Royal Monaco Police Model Sedans, Royal Monaco Sedans with A38 Package							
HR70 x 15	2	—	—	Std.	Std.	Std.	15" x 6.5JJ Heavy-duty
Royal Monaco Wagons with A38 Package							
LR78 x 15(B)	3	—	—	Std.	Std.	Std.	15" x 6.5JJ
LR78 x 15	2	—	—	S.O.	S.O.	S.O.	Heavy-duty

1. Bias-Belted BSW. 2. Fabric-Belted Radial-Ply High-Performance BSW. 3. Steel-Belted Radial-Ply BSW.

(A) Minimum size required with air conditioning. (B) Not certified or recommended for high-speed police service. Should not be used for speeds over 100 m.p.h.

REAR AXLE RATIOS: POLICE MODELS AND PACKAGES With Federal emissions package (under 4000 feet altitude)

CODE	ENGINES	ASPEN		MONACO AXLE RATIOS		ROYAL MONACO	
		2.71:1	3.2:1	2.71:1	3.21:1	2.71:1	3.21:1
E25	225 1-bbl. H.D.	STD	OPT	NA	STD	—	—
E44	318 2-bbl. H.D.	OPT	STD	OPT	STD	—	—
E57	360 2-bbl. H.D.	OPT	STD	OPT	STD*	STD	NA
E58	360 4-bbl. H.D.	OPT	STD	—	—	—	—
E68	400 4-bbl. H.D.	—	—	OPT	STD	NA	STD
E85	440 4-bbl.	—	—	—	—	OPT	STD
E86	440 4-bbl. H.D.	—	—	STD	OPT	STD	OPT

with Federal emissions package (over 4000 feet altitude)

E25	225 1-bbl. H.D.	NA	STD	—	—	—	—
E44	318 2-bbl. H.D.	NA	STD	NA	STD	—	—
E56	360 2-bbl.	—	—	—	—	NA	STD
E58	360 4-bbl. H.D.	NA	STD	NA	STD	—	—
E85	440 4-bbl.	—	—	—	—	NA	STD

with California emission package

E25	225 1-bbl. H.D.	NA	STD	—	—	—	—
E44	318 2-bbl. H.D.	OPT	STD	OPT	STD	—	—
E56	360 2-bbl.	—	—	OPT	STD	OPT	STD
E58	360 4-bbl. H.D.	OPT	STD	OPT	STD	—	—
E85	440 4-bbl.	—	—	—	—	OPT	STD
E86	440 4-bbl. H.D.	—	—	STD	OPT	—	—

*2.71 with wagons; 3.21 not available.

Engines recommended for Police Service

For 1977, Dodge has six special engines with added endurance features to improve their durability in police service.

These are:

- 440 CID high performance with 4-barrel carburetor and dual exhaust (Sales Code E86)
 - Federal emissions package below 4,000 feet altitude—Monaco and Royal Monaco—includes **Electronic Lean-Burn System** with dual catalytic converters
 - California emissions package—Monaco only. Air pump and dual catalytic converters plus mini-converter (total of 3 converters), does not include Electronic Lean-Burn system.
 - Not available at altitudes above 4,000 feet outside California.
- 400 CID with 4-barrel carburetor, **Electronic Lean-Burn System**, catalytic converter and single exhaust (Sales Code E68)
 - Federal emissions package below 4,000 feet only—Monaco and Royal Monaco.
- 360 CID with 4-barrel carburetor, catalytic converter and single exhaust (Sales Code E58).
 - Federal emissions package below 4,000 feet—Aspen only. (Includes Electronic Lean-Burn System).

Over 4,000 feet altitude and California emissions packages—Aspen and Monaco.
Air pump and mini-converter (does not include Electronic Lean-Burn System).
- 360 CID with 2-barrel carburetor, catalytic converter and single exhaust (Sales Codes E57) (Must code F07—H.D.)
 - Federal emissions package below 4,000 feet only—Aspen, Monaco and Royal Monaco.
- 318 CID with 2-barrel carburetor, catalytic converter and single exhaust (Sales Code E44)
 - Federal emissions package below 4,000 feet—Aspen and Monaco. (Must code F07—H.D.)

—Federal over 4,000 feet altitude and California emissions packages—Aspen and Monaco.

Air pump and mini-converter added.

- 225 CID with 1-barrel carburetor, catalytic converter and single exhaust (Sales Code E25).
 - Federal emissions package below 4,000 feet only—Aspen and Monaco.
 - Federal over 4,000 feet altitude and California emissions packages—Aspen only.

Air pump and mini-converter added.

The three four-barrel engines have the following features for long life and performance:

- Double roller timing chain.
- Hot-pressed valve springs.
- Lubrite-treated camshaft.
- Chrome-flashed exhaust valve stems with hardened tips.
- Molybdenum-filled top rings.
- Anti-turbulence windage tray between crankshaft and oil sump.
- High temperature valve seals.

In addition:

- On the 440—Special connecting rods, high-strength rocker arms, high-load valve springs and heavy chrome oil ring rails.
- On the 360 4-barrel—Special Silichrome-1, high-temperature steel intake valves, Nimonic exhaust valves and heavy chrome oil rings. Heads have revised valve seat section and special cleaning processing for better cooling.

The 360 2-barrel H.D. and 318 2-barrel H.D. have the following features for longer life and better oil economy at high mileage:

- Double roller timing chain.
- High temperature valve stem seals.

The 225 1-barrel H.D. has chrome top rings for oil economy at high mileage.

Engine Availability—Police Models and Packages—Federal Emissions Package (Under 4000' Altitude)

NOTE: All engines for police service have catalytic converters and require unleaded fuel.

Code	Engine—Cubic-inch Carburetor	Net Torque	Net Horsepower	Aspen	Monaco	Royal Monaco
E25*	225 Six 1-bbl. H.D.	170 @ 1600 RPM	100 @ 3600 RPM	X	X(1,3)	NA
E44*	318 V-8 2-bbl. H.D.	245 @ 1600 RPM	145 @ 4000 RPM	X	X(3)	NA
E57*	360 V-8 2 bbl. H.D.	275 @ 2000 RPM	155 @ 3600 RPM	X	X(4)	X(3)
E58*(2)	360 V-8 4-bbl. H.D.	275 @ 2000 RPM	175 @ 4000 RPM	X	NA	NA
E68*(2)	400 V-8 4-bbl. H.D.	305 @ 3200 RPM	190 @ 3600 RPM	NA	X	X(3)
E85(2)	440 V-8 4-bbl.	320 @ 2000 RPM	195 @ 3600 RPM	NA	NA	X(6)
E86*(2)	440 V-8 4-bbl. Dual Exhaust, Dual Catalytic Converter H.D.	350 @ 3200 RPM	245 @ 4000 RPM	NA	X(5)	X(3)

Engine Availability—Police Models and Packages—California Emissions Package

Code	Engine—Cubic-inch Carburetor	Net Torque	Net Horsepower	Aspen	Monaco	Royal Monaco
E25*	225 Six 1-bbl.	170 @ 1600 RPM	90 @ 3600 RPM	X	NA	NA
E44*	318 V-8 2-bbl.	235 @ 1600 RPM	135 @ 3600 RPM	X	X(3)	NA
E56	360 V-8 4-bbl.	270 @ 1600 RPM	170 @ 4000 RPM	NA	X(6)	X
E58*	360 V-8 4-bbl. Single exhaust	270 @ 1600 RPM	160 @ 3600 RPM	X	X(3)	NA
E86*	440 V-8 4-bbl. Dual exhaust Dual Catalytic Converter plus mini converter	330 @ 3200 RPM	230 @ 4000 RPM	NA	X(5)	NA

Engine Availability—Police Models and Packages—Federal Emissions Package (Over 4000' Altitude)

Code	Engine—Cubic-inch Carburetor	Net Torque	Net Horsepower	Aspen	Monaco	Royal Monaco
E25*	225 Six 1-bbl.	170 @ 1600 RPM	90 @ 3600 RPM	X	NA	NA
E44	318 V-8 2-bbl.	235 @ 1600 RPM	135 @ 3600 RPM	X	X(3)	NA
E56	360 V-8 4-bbl.	270 @ 1600 RPM	170 @ 3600 RPM	NA	X(6)	X
E58*	360 V-8 4-bbl.	270 @ 1600 RPM	160 @ 3600 RPM	X	X(3)	NA
E85(2)	440 V-8 4-bbl.	310 @ 2400 RPM	185 @ 3600 RPM	NA	NA	X

*Heavy-Duty Features: Recommended for Police Service. Engine Oil Cooler recommended for high-speed service with E58, E68, and E86 on Police Models and Packages with 3.21 rear-axle ratio in hot climates.


(1) Police Package only.
(2) Electronic Lean-Burn System.
(3) Not available on wagons.

(4) Required on wagons.
(5) Sedans only.
(6) Wagons only.

1977 Dodge Police Fleet Specifications

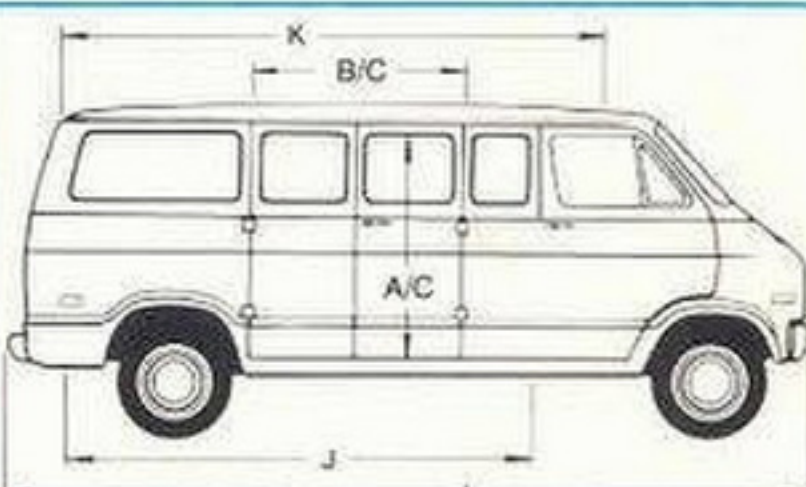
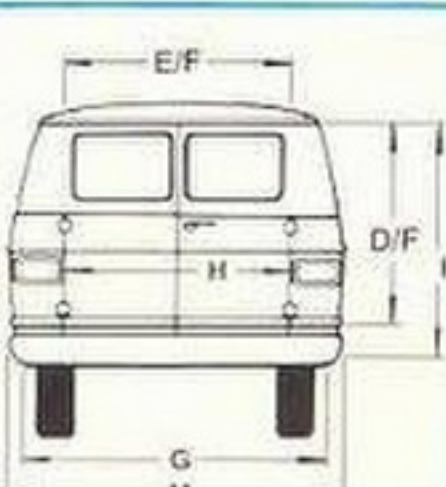
Royal Monaco, Monaco, Aspen

4-Door Sedans	Royal Monaco	Monaco	Aspen
A—Wheelbase	121.4"	117.4"	112.7"
B—Overall length	225.7"	218.4"	201.5"
C—Overall width	79.8"	77.7"	72.8"
D—Headroom, front	38.7"	38.7"	39.2"
rear	37.8"	37.3"	37.5"
E—Legroom, front	42.1"	42.6"	42.5"
rear	36.9"	34.8"	36.6"
F—Shoulder-room, front	61.5"	58.9"	55.8"
rear	61.6"	58.8"	55.6"

Sportsman Wagon and Tradesman Van

	109" wb.	127" wb.	127" wb. Maxiwagon, Maxivan
A—Hinged door opening—side door height	47.2"	47.2"	47.2"
B—Hinged door opening—side door width	49.3"	49.3"	49.3"
C—Sliding side door opening—width	—	42.0"	42.0"
—height	—	47.2"	47.2"
D—Door opening—Hinged rear 2-door height	47.2"	47.2"	47.2"
E—Door opening—Hinged rear 2-door width	49.3"	49.3"	49.3"
F—Single swing door opening—width	49.3"	49.3"	49.3"
—height	47.2"	47.2"	47.2"
—degree of opening	90°	90°	90°
G—Floor width, maximum	68.1"	68.1"	68.1"
H—Width between wheelhouses	50.0"	50.0"	50.0"
I—Height—maximum passenger area	53.2"	53.2"	53.2"

	109" wb.	127" wb.	127" wb. Maxiwagon, Maxivan
J—Length—rear door to driver seat-back	93.7"	111.7"	129.7"
K—Length—rear door to engine cover	117.3"	135.3"	153.3"
L—Overall length	176.0"	194.0"	212.0"
M—Overall width	79.8"	79.8"	79.8"
—Maximum width inside	72.2"	72.2"	72.2"

BID INFORMATION

For information on the Dodge Police (Including the Police Package—Code A38), it will be necessary that the complete information such as bid invitation, opening date, number of units, special conditions, and complete specifications, including delivery requirements, be forwarded to the Fleet Division, Chrysler Corporation, Special Bid Group, P.O. Box 700, Center Line, Michigan 48015.

Bid information concerning Sportsman Wagons and Tradesman Vans for police use should be directed to the Truck Bid Department, Chrysler Corporation, P. O. Box 644, Detroit, Michigan 48321.

AUTOMOTIVE SALES DIVISION



CHRYSLER CORPORATION

All product illustrations and specifications are based on authorized information. Although all descriptions are believed correct at publication approval, accuracy cannot be guaranteed. Some of the equipment shown on product illustrations is optional, at extra cost. Chrysler Corporation reserves the right to make changes from time to time, without notice or obligation, in prices, specifications, colors and materials, and to change or discontinue models.

Litho in U.S.A.